

# DALLAS COUNTY MANAGEMENT REPORT

## VOLUME IV JUVENILE RECIDIVISM

SECOND QUARTER OF THE  
FISCAL YEAR ENDING SEPTEMBER 30, 2001

# 2-2001



PREPARED BY:  
DALLAS COUNTY JUVENILE DEPARTMENT

Quarterly Report On Juvenile Justice System Recidivism Measures

**Table Of Contents**

- I. Executive Summary**
- II. Texas Youth Commission**
  - 2.0 Narrative and Index to Data
  - 2.1 Summary of Available Data
  - 2.2 Releases in 1998
  - 2.3 Releases in 1999
- III. Dallas County Youth Village**
  - 3.0 Narrative and Index to Data
  - 3.1 Summary of Available Data
  - 3.2 Successful Discharges in 1998
  - 3.3 Successful Discharges in 1999
- IV. Medlock Treatment Center**
  - 4.0 Narrative and Index to Data
  - 4.1 Successful Discharges in 1999
- V. Contract Residential Placement**
  - 5.0 Narrative and Index to Data
  - 5.1 Summary of Available Data
  - 5.2 Successful Discharges in 1998
  - 5.3 1998 Successful Discharges by Facility
  - 5.4 Successful Discharges in 1999
  - 5.5 1999 Successful Discharges by Facility
- VI. Intensive Supervision Probation**
  - 6.0 Narrative and Index to Data
  - 6.1 Summary of Available Data
  - 6.2 Intensive Supervision during First Quarter of 1999
  - 6.3 Intensive Supervision during First Quarter of 2000
  - 6.4 Intensive Supervision during Third Quarter of 2000

**VII. Regular Home Probation**

- 7.0 Narrative and Index to Data
- 7.1 Summary of Available Data
- 7.2 Home Probation during First Quarter of 1999
- 7.3 Home Probation during First Quarter of 2000
- 7.4 Home Probation during Third Quarter of 2000

**VIII. Deferred Prosecution**

- 8.0 Narrative and Index to Data
- 8.1 Summary of Available Data
- 8.2 Deferred Prosecution during First Quarter of 1999
- 8.3 Deferred Prosecution during First Quarter of 2000
- 8.4 Deferred Prosecution during Third Quarter of 2000

**IX. Supervisory Caution**

- 9.0 Narrative and Index to Data
- 9.1 Summary of Available Data
- 9.2 Supervisory Caution during First Quarter of 1999
- 9.3 Supervisory Caution during First Quarter of 2000
- 9.4 Supervisory Caution during Third Quarter of 2000

# Executive Summary

This report presents six-month recidivism rates for referrals that were disposed of during the third quarter of 2000, including intensive supervision (ISP), regular home probation (HP), deferred prosecution (DP), and supervisory caution (SC). Twelve months recidivism rates were also updated for those who were discharged during 1999 from Texas Youth Commission (TYC), Youth Village (YV), Contract Residential Placement (CRP), and Medlock Treatment Center. Data for other samples were also updated with 12- and 24-month recidivism rates.

## ISP, Home Probation, Deferred Prosecution, and Supervisory Caution

Some patterns in offender profiles and recidivism rates are clear for those supervised in the community, which are shown in the charts on this page.

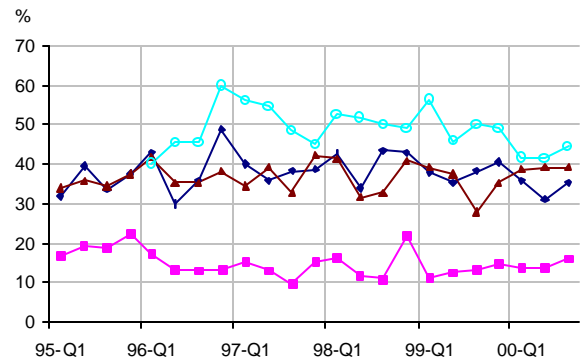
### Changes in Offense Profiles

- Offense profiles for the HP groups show a gradual but clearly noticeable decline throughout the period. The lowest point of 1.6 in the second quarter of 2000 represents a decline of 33 percent compared to the highest point of 2.4 in the second quarter of 1995.
- Offense profiles for SC and DP groups have remained at relatively similar levels since 1995.
- No clear trend is apparent for ISP samples although their profiles have fluctuated within a wide range.

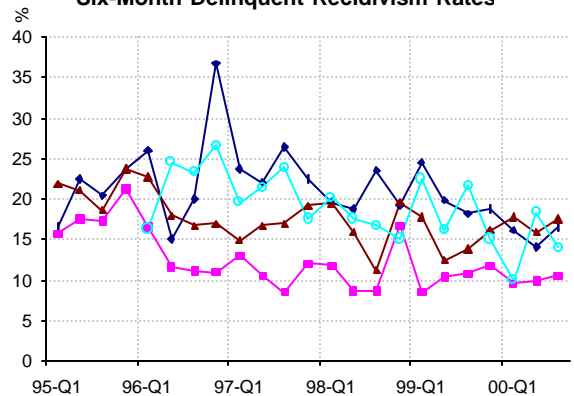
### Changes in Recidivism Rates

- Total recidivism rates, which include all types of re-referrals, do not show clear trend for any group throughout the period.
- Delinquent recidivism rates, which exclude technical violations and CINS offenses, show different trends for different groups. DP has maintained a low level around 10 percent in recent periods compared to over 15 percent during 1995. HP samples reached a low of 12 percent in the second quarter of 1999 but have started to rise since, despite a downward trend in offender profiles during the same period.
- There is no apparent correlation, at least within six months from disposition, between prior referral history and delinquent recidivism rates. For example, although the prior referrals of ISP groups have always been significantly higher than those of HP, they have often experienced delinquent recidivism rates that are similar to or even lower than those for HP groups. While SC samples have consistently had the lowest number of prior referrals, often times their delinquent recidivism rates

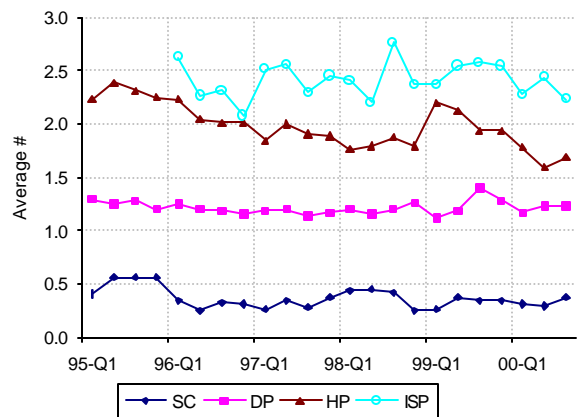
Six-Month Total Recidivism Rates



Six-Month Delinquent Recidivism Rates



Average Number of Delinquent Referrals



Note: Quarterly Data for ISP is available since Q1 96.

are the highest among the groups. Only the DP samples appear to have maintained their recidivism rates at a level that consistently reflects its lower profile in comparison to HP and ISP.

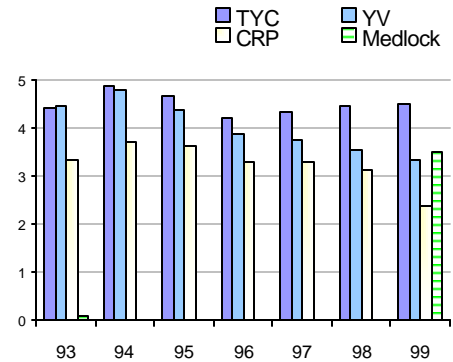
## TYC, Youth Village, Contract Placement, and Medlock

There are certain noticeable trends in both the offender profiles and recidivism rates for the placement samples in this report.

### Offense Profiles

- For both YV and CRP samples, the average number of prior delinquent referrals continues to decline in 1999, as shown in the chart at right. While it dropped slightly by 6 percent for YV 99 compared to 1998 (3.35 vs. 3.56), the relative drop for the CRP 99 sample was a substantial 24 percent (2.37 vs. 3.11).
- For those released from TYC, however, the number of prior referrals has been rising since 1996.

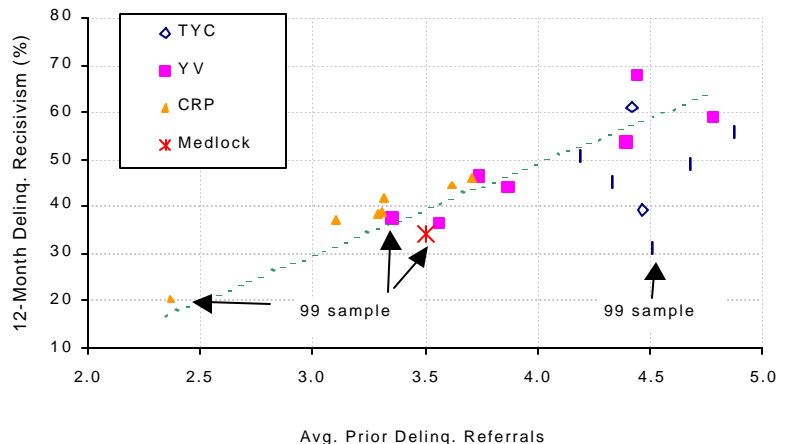
Avg # of Prior Delinq. Referrals



Note: Data for Medlock available only in 1999

We also noted strong correlations between recidivism rates and offense profiles, particularly for the YV and CRP samples. With prior history on the horizontal axis and 12-month delinquent recidivism rates on the vertical axis, the chart at right shows their close relationship as represented by the dotted straight line. This relationship exists for both total and delinquent recidivism rates, although more pronounced for delinquent recidivism.

Correlations Between Prior Referrals and Recidivism Rates

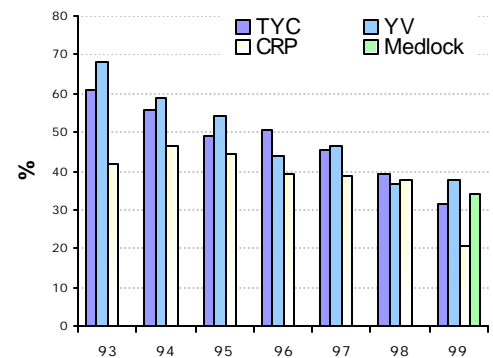


### Recidivism Rates

In light of the strong correlations between offense profiles and recidivism rates, some clear patterns in recidivism rates can be summarized as follows:

- Although 12-month delinquent recidivism for CRP in 1999 dropped by a substantial 45 percent, from 38 percent in 98 to 20 percent, a large portion of the decline can be attributed to the corresponding decline in its offender profile.
- The recidivism trend for TYC samples diverges noticeably from the profile-recidivism correlations noted above; i.e., despite the gradual rise in prior referrals, recidivism rates for recent TYC samples continue to decline.
- While total recidivism rate for Medlock was higher than that for YV (56 vs. 46 percent respectively), its delinquent recidivism rate is slightly lower than YV, at 34 and 38 percent respectively. Offender profiles for the two groups are virtually the same.

12-Months Delinq. Recidivism



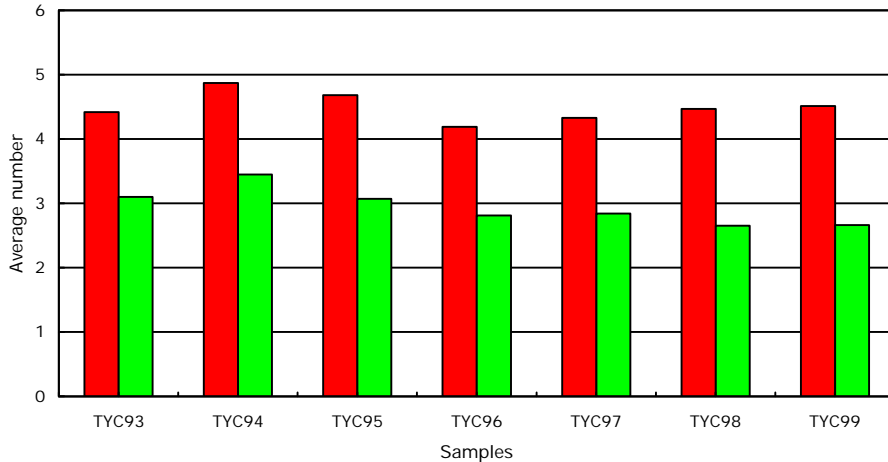
## DALLAS COUNTY JUVENILE DEPARTMENT RECIDIVISM TRACKING PROGRAM

SAMPLE	TEXAS YOUTH COMMISSION	PAGE NO.	2.0
MEASURE	NARRATIVE AND INDEX TO DATA	DATE	09/30/01

Texas Youth Commission (TYC) is responsible for offenders who have more serious offenses. Once committed to TYC, a juvenile is no longer under the care and control of the Dallas County Juvenile Department.

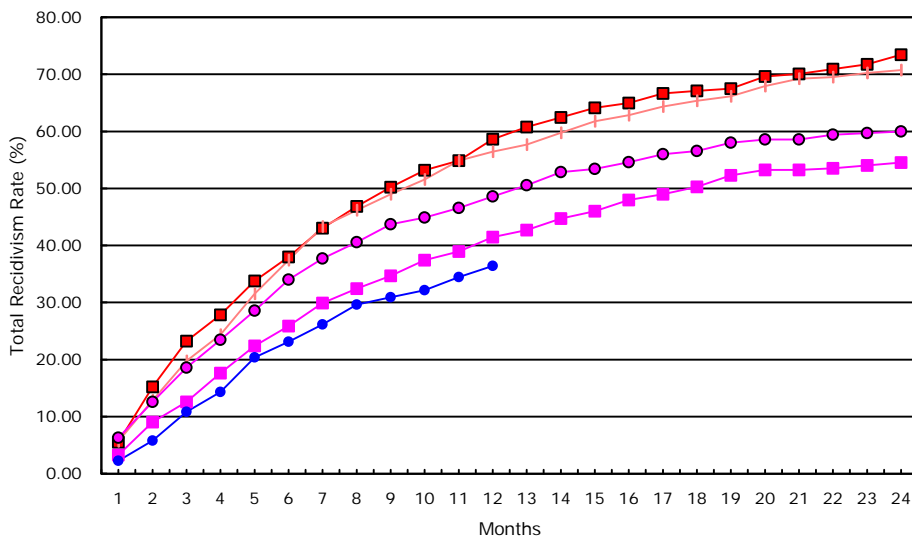
**Offense profile of the samples:**

	TYC94	TYC95	TYC96	TYC97	TYC98	TYC99
Average # of del. prior offense:	4.87	4.68	4.19	4.33	4.47	4.51
Average # of fel. prior offense:	3.45	3.07	2.81	2.84	2.65	2.66



■ Average # of del. prior offense:     
 ■ Average # of fel. prior offense:

**Cumulative Recidivism Rates by Months**



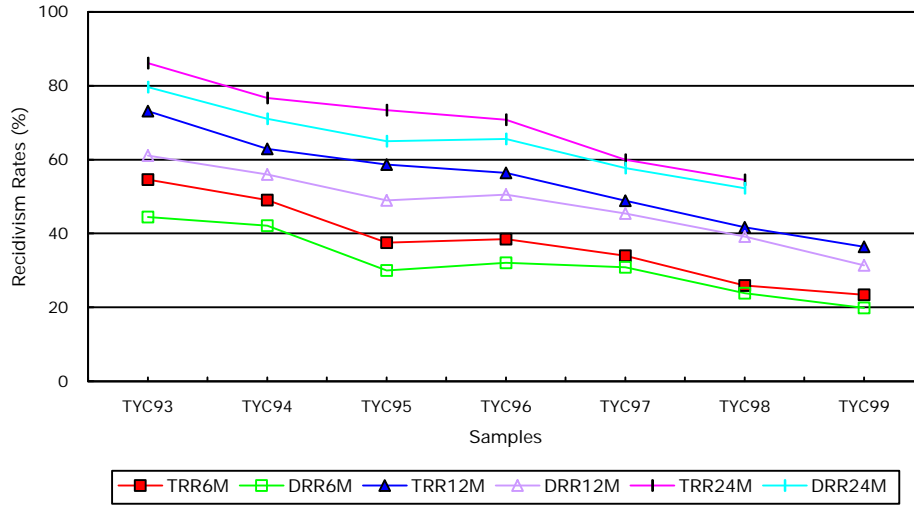
■ TYC95   
 — TYC96   
 ● TYC97   
 ■ TYC98   
 ● TYC99

## RECIDIVISM TRACKING PROGRAM

SAMPLE	TEXAS YOUTH COMMISSION	PAGE NO.	2.1
MEASURE	SUMMARY OF AVAILABLE DATA	DATE	09/30/01

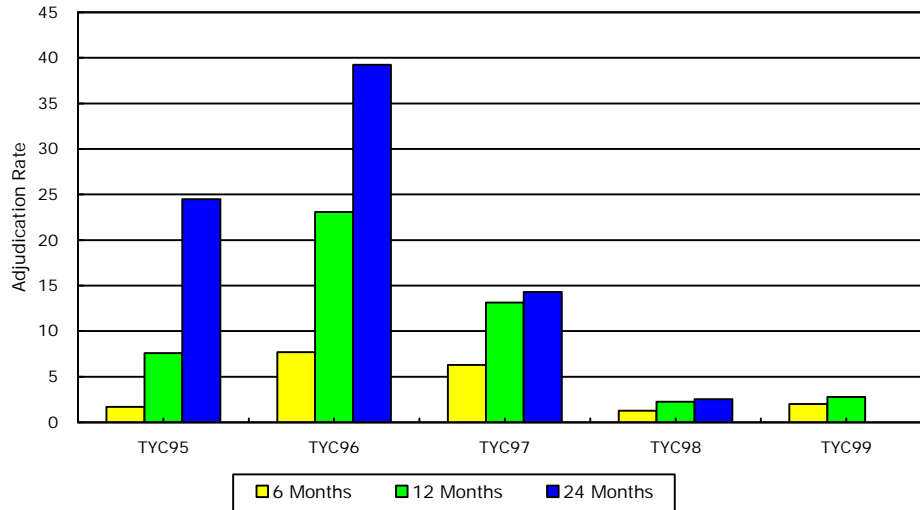
### Recidivism Rates

	Total Recidivism (%)			Delinquent Recidivism (%)		
	6 Months	12 Months	24 Months	6 Months	12 Months	24 Months
<u>TYC95</u>	37.55	58.65	73.41	29.96	48.95	64.97
<u>TYC96</u>	38.46	56.41	70.77	32.05	50.51	65.64
<u>TYC97</u>	34.00	48.86	60.00	30.86	45.43	57.71
<u>TYC98</u>	25.88	41.71	54.52	23.87	39.20	52.26
<u>TYC99</u>	23.37	36.43		19.85	31.41	



### Re-adjudication Rate

	6 Months	12 Months	24 Months
<u>TYC96</u>	7.69	23.08	39.23
<u>TYC97</u>	6.29	13.14	14.29
<u>TYC98</u>	1.26	2.26	2.51
<u>TYC99</u>	2.01	2.76	



**DALLAS COUNTY JUVENILE DEPARTMENT  
RECIDIVISM TRACKING PROGRAM**

<b>SAMPLE</b>	<b>TEXAS YOUTH COMMISSION</b>	<b>PAGE NO.</b>	<b>2.2</b>
<b>MEASURE</b>	<b>RELEASES IN 1998</b>	<b>DATE</b>	<b>09/30/01</b>

TYC98 profile of individuals 24 months after release from TYC

Sample Size: 398	<u>Adjudication Rate</u>				Total RRR-6 Months	103	26%
	6 Months:	N	%	Del. RRR-6 Months	95	24%	
	12 Months:	5	1%	Total RRR-12 Months	166	42%	
	24 Months:	9	2%	Del. RRR-12 Months	156	39%	
		10	3%	Total RRR-24 Months	217	55%	
				Del. RRR-24 Months	208	52%	

Profile	Total RRR		Del. RRR		Total RRR		Del. RRR		Total RRR		Del. RRR	
	N	%	N	%	N	%	N	%	N	%	N	%
<u>Gender</u>												
Male	358	90%	97	27%	90	25%	154	43%	148	41%	201	56%
Female	40	10%	6	15%	5	13%	12	30%	8	20%	16	40%
<u>Race</u>												
Black	200	50%	57	29%	54	27%	90	45%	87	44%	118	59%
Hispanic	122	31%	28	23%	24	20%	48	39%	43	35%	59	48%
White	68	17%	16	24%	15	22%	25	37%	23	34%	37	54%
Other	8	2%	2	25%	2	25%	3	38%	3	38%	3	38%
<u>Age When Released</u>												
<16	12	3%	4	33%	4	33%	6	50%	6	50%	7	58%
>=16	386	97%	99	26%	91	24%	160	41%	150	39%	210	54%
<u>Age, 1st Referral</u>												
10-13	181	45%	59	33%	53	29%	87	48%	81	45%	109	60%
14-15	181	45%	37	20%	35	19%	66	36%	62	34%	93	51%
16 and Over	36	9%	7	19%	7	19%	13	36%	13	36%	15	42%
<u>Prior Felony Offenses</u>												
None	13	3%	4	31%	4	31%	4	31%	4	31%	5	38%
1-2	198	50%	45	23%	40	20%	69	35%	65	33%	98	49%
>=3	187	47%	54	29%	51	27%	93	50%	87	47%	114	61%



**DALLAS COUNTY JUVENILE DEPARTMENT  
RECIDIVISM TRACKING PROGRAM**

<b>SAMPLE</b>	<b>TEXAS YOUTH COMMISSION</b>	<b>PAGE NO.</b>	<b>2.3</b>
<b>MEASURE</b>	<b>RELEASES IN 1999</b>	<b>DATE</b>	<b>09/30/01</b>

TYC99 profile of individuals 12 months after release from TYC

Sample Size:	398	<u>Adjudication Rate</u>		N	%	Total RRR-6 Months	93	23%	
		6 Months:	8			2%	Del. RRR-6 Months	79	20%
		12 Months:	11			3%	Total RRR-12 Months	145	36%
		24 Months:					Del. RRR-12 Months	125	31%
							Total RRR-24 Months		
						Del. RRR-24 Months			

Profile	Total RRR		Del. RRR		Total RRR		Del. RRR		Total RRR		Del. RRR	
	% of		6 Months		12 Months		24 Months					
	N	Total	N	%	N	%	N	%	N	%	N	%
<u>Gender</u>												
Male	368	92%	92	25%	78	21%	142	39%	123	33%		
Female	30	8%	1	3%	1	3%	3	10%	2	7%		
<u>Race</u>												
Black	174	44%	52	30%	42	24%	72	41%	58	33%		
Hispanic	145	36%	29	20%	25	17%	49	34%	44	30%		
White	74	19%	11	15%	11	15%	22	30%	21	28%		
Other	5	1%	1	20%	1	20%	2	40%	2	40%		
<u>Age When Released</u>												
<16	16	4%	8	50%	6	38%	12	75%	8	50%		
>=16	382	96%	85	22%	73	19%	133	35%	117	31%		
<u>Age, 1st Referral</u>												
10-13	187	47%	59	32%	48	26%	90	48%	77	41%		
14-15	172	43%	28	16%	25	15%	47	27%	40	23%		
16 and Over	39	10%	6	15%	6	15%	8	21%	8	21%		
<u>Prior Felony Offenses</u>												
None	20	5%	6	30%	5	25%	7	35%	6	30%		
1-2	199	50%	39	20%	31	16%	59	30%	46	23%		
>=3	179	45%	48	27%	43	24%	79	44%	73	41%		

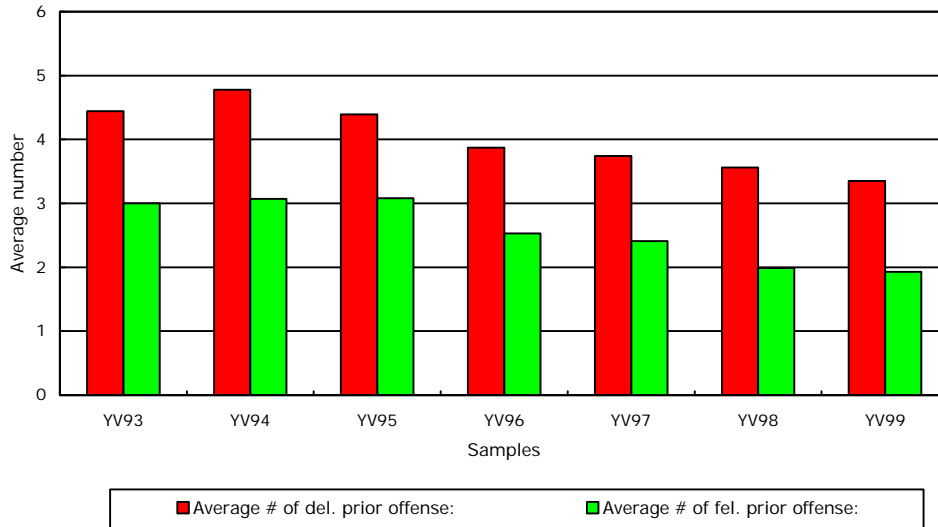
## DALLAS COUNTY JUVENILE DEPARTMENT RECIDIVISM TRACKING PROGRAM

SAMPLE	DALLAS COUNTY YOUTH VILLAGE	PAGE NO.	3.0
MEASURE	NARRATIVE AND INDEX TO DATA	DATE	09/30/01

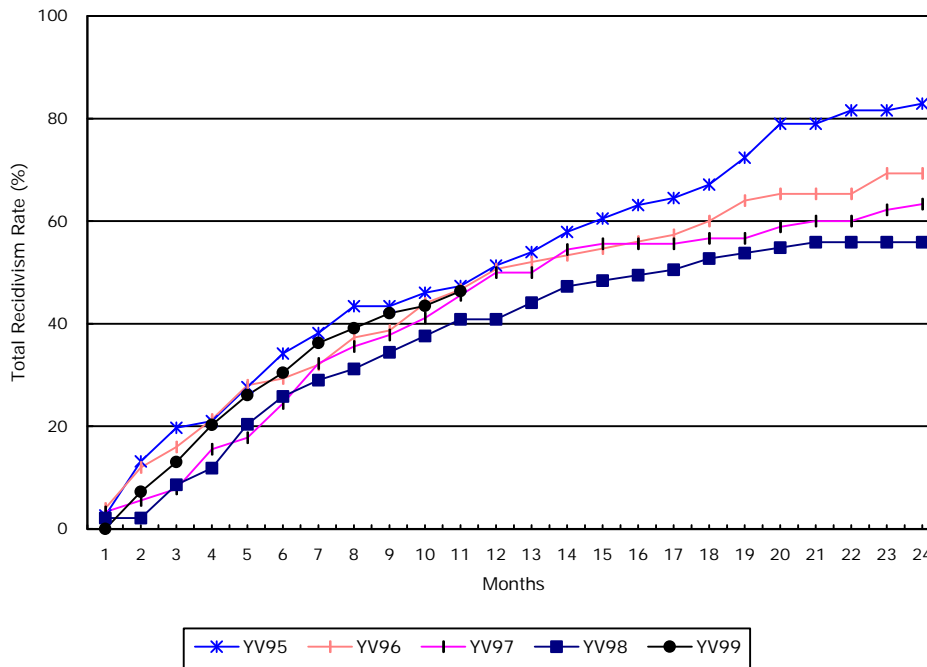
Dallas County Youth Village is a County-run facility that houses 88 youthful offenders. Youth Village is currently housing Level of Care III offenders, although in the past years, a higher level of care was offered.

### Offense profile of the samples:

	<u>YV94</u>	<u>YV95</u>	<u>YV96</u>	<u>YV97</u>	<u>YV98</u>	<u>YV99</u>
Average # of del. prior offense:	4.78	4.42	3.87	3.74	3.56	3.35
Average # of fel. prior offense:	3.07	3.18	2.53	2.41	1.99	1.93



### Cumulative Recidivism Rates by Months

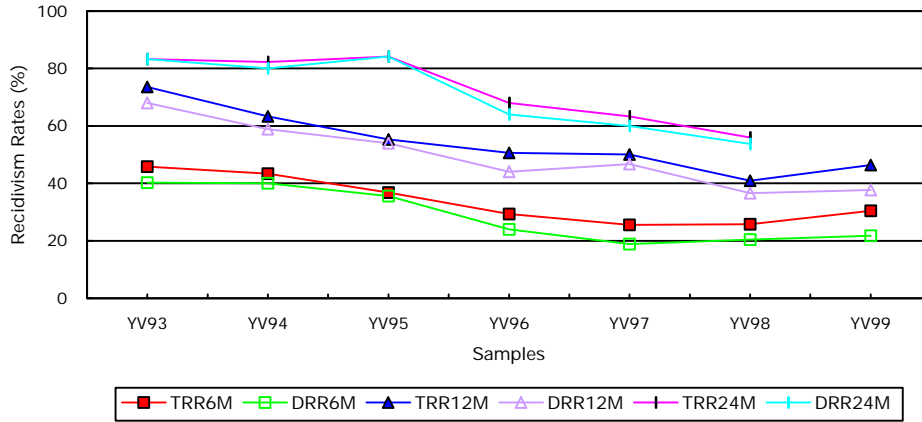


## DALLAS COUNTY JUVENILE DEPARTMENT RECIDIVISM TRACKING PROGRAM

SAMPLE	DALLAS COUNTY YOUTH VILLAGE	PAGE NO.	3.1
MEASURE	SUMMARY OF AVAILABLE DATA	DATE	09/30/01

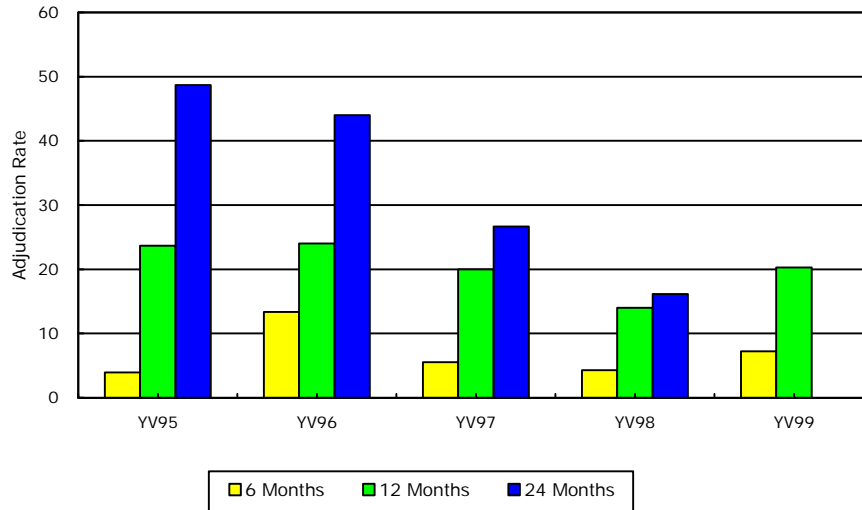
### Recidivism Rates

	Total Recidivism (%)			Delinquent Recidivism (%)		
	6 Months	12 Months	24 Months	6 Months	12 Months	24 Months
<u>YV95</u>	35.53	51.32	82.89	34.21	50.00	82.89
<u>YV96</u>	29.33	50.67	68.00	24.00	44.00	64.00
<u>YV97</u>	25.56	50.00	63.33	18.89	46.67	60.00
<u>YV98</u>	25.81	40.86	55.91	20.43	36.56	53.76
<u>YV99</u>	30.43	46.38		21.74	37.68	



### Re-adjudication Rate

	6 Months	12 Months	24 Months
<u>YV96</u>	13.33	24.00	44.00
<u>YV97</u>	5.56	20.00	26.67
<u>YV98</u>	4.30	13.98	16.13
<u>YV99</u>	7.25	20.29	



**DALLAS COUNTY JUVENILE DEPARTMENT  
RECIDIVISM TRACKING PROGRAM**

SAMPLE	DALLAS COUNTY YOUTH VILLAGE	PAGE NO.	3.2
MEASURE	SUCCESSFUL COMPLETIONS IN 1998	DATE	09/30/01

Profile of youths surveyed 24 months after successful discharge

Sample Size:	93	<u>Adjudication Rate</u>		N	%		
		N	%				
		6 Months:	4	4%	Total RRR-6 Months	24	26%
		12 Months:	13	14%	Del. RRR-6 Months	19	20%
		24 Months:	15	16%	Total RRR-12 Months	38	41%
					Del. RRR-12 Months	34	37%
					Total RRR-24 Months	52	56%
					Del. RRR-24 Months	50	54%

	<u>Profile</u>		<u>Total RRR</u>		<u>Del. RRR</u>		<u>Total RRR</u>		<u>Del. RRR</u>		<u>Total RRR</u>		<u>Del. RRR</u>	
	N	% of Total	N	%	N	%	N	%	N	%	N	%	N	%
<u>Gender</u>			<u>6 Months</u>		<u>12 Months</u>		<u>24 Months</u>							
Male	93	100%	24	26%	19	20%	38	41%	34	37%	52	56%	50	54%
Female														
<u>Race</u>														
Black	48	52%	15	31%	12	25%	24	50%	22	46%	33	69%	32	67%
Hispanic	30	32%	5	17%	3	10%	9	30%	7	23%	13	43%	12	40%
White	15	16%	4	27%	4	27%	5	33%	5	33%	6	40%	6	40%
Other														
<u>Age, at Discharge</u>														
14-15	16	17%	7	44%	5	31%	10	63%	8	50%	12	75%	11	69%
16 & over	77	83%	17	22%	14	18%	28	36%	26	34%	40	52%	39	51%
<u>Age, 1st Referral</u>														
10-13	42	45%	13	31%	10	24%	22	52%	20	48%	31	74%	30	71%
14-15	49	53%	11	22%	9	18%	16	33%	14	29%	21	43%	20	41%
16 & over	2	2%	0	0%	0	0%	0	0%	0	0%	0	0%	0	0%
<u>Child Lives With</u>														
Both	17	18%	5	29%	4	24%	8	47%	7	41%	9	53%	9	53%
Father	3	3%	1	33%	1	33%	2	67%	2	67%	2	67%	2	67%
Mother	34	37%	8	24%	6	18%	14	41%	13	38%	21	62%	20	59%
Other/Unknown	39	42%	10	26%	8	21%	14	36%	12	31%	20	51%	19	49%
<u>Level of Care</u>														
III	88	95%	23	26%	18	20%	37	42%	33	38%	50	57%	48	55%
IV	5	5%	1	20%	1	20%	1	20%	1	20%	2	40%	2	40%
<u>Prior Felony Offenses</u>														
<3	65	70%	16	25%	12	18%	27	42%	24	37%	36	55%	35	54%
3-4	20	22%	3	15%	3	15%	6	30%	6	30%	11	55%	11	55%
>=5	8	9%	5	63%	4	50%	5	63%	4	50%	5	63%	4	50%

**DALLAS COUNTY JUVENILE DEPARTMENT  
RECIDIVISM TRACKING PROGRAM**

SAMPLE	DALLAS COUNTY YOUTH VILLAGE	PAGE NO.	3.3
MEASURE	SUCCESSFUL COMPLETIONS IN 1999	DATE	09/30/01

Profile of youths surveyed 12 months after successful discharge

Sample Size:	69	<u>Adjudication Rate</u>		Total RRR-6 Months	21	30%	
		N	%				
		6 Months:	5	7%	Del. RRR-6 Months	15	22%
		12 Months:	14	20%	Total RRR-12 Months	32	46%
		24 Months:			Del. RRR-12 Months	26	38%
					Total RRR-24 Months		
					Del. RRR-24 Months		

Profile	Total RRR		Del. RRR		Total RRR		Del. RRR		Total RRR		Del. RRR	
	N	%	N	%	N	%	N	%	N	%	N	%
<u>Gender</u>												
Male	69	100%	21	30%	15	22%	32	46%	26	38%		
Female												
<u>Race</u>												
Black	34	49%	11	32%	10	29%	18	53%	17	50%		
Hispanic	26	38%	8	31%	5	19%	11	42%	7	27%		
White	8	12%	1	13%	0	0%	2	25%	1	13%		
Other	1	1%	1		0		1	100%	1	100%		
<u>Age, at Discharge</u>												
14-15	21	30%	10	48%	6	29%	15	71%	12	57%		
16 & over	48	70%	11	23%	9	19%	17	35%	14	29%		
<u>Age, 1st Referral</u>												
10-13	37	54%	16	43%	12	32%	21	57%	18	49%		
14-15	28	41%	5	18%	3	11%	10	36%	7	25%		
16 & over	4	6%	0	0%	0	0%	1	25%	1	25%		
<u>Child Lives With</u>												
Both	13	19%	4	31%	2	15%	5	38%	3	23%		
Father	2	3%	1	50%	1	50%	2	100%	2	100%		
Mother	27	39%	5	19%	4	15%	9	33%	8	30%		
Other/Unknown	27	39%	11	41%	8	30%	16	59%	13	48%		
<u>Prior Felony Offenses</u>												
<3	50	72%	16	32%	10	20%	25	50%	19	38%		
3-4	18	26%	5	28%	5	28%	7	39%	7	39%		
>=5	1	1%	0	0%	0	0%	0		0			

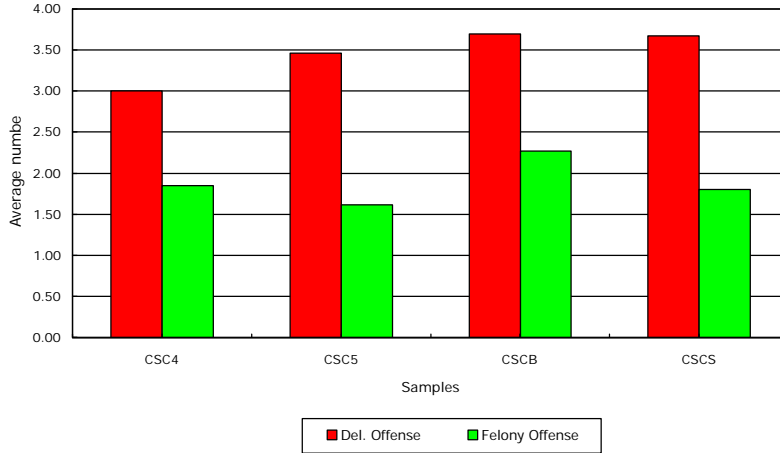
## DALLAS COUNTY JUVENILE DEPARTMENT RECIDIVISM TRACKING PROGRAM

SAMPLE	Lyle Medlock Treatment Center	PAGE NO.	4.0
MEASURE	NARRATIVE AND INDEX TO DATA	DATE	09/30/01

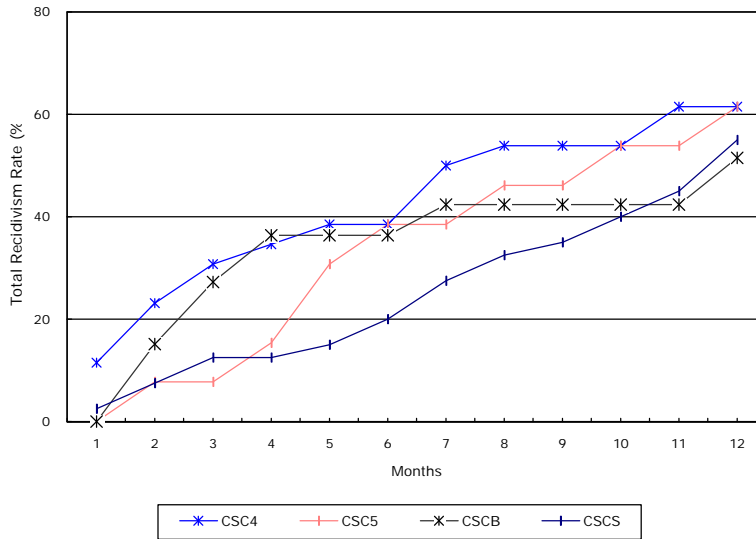
Lyle Medlock Treatment Center is a 96-bed secure treatment facility with four treatment modules. The four modules during the cover period of the report are substance abuse (CSCS), boot camp (CSCB), level 4 residential treatment (CSC4) and level 5 residential treatment (CSC5); level 5 program has since been replaced by a 90-day short term program.

**Offense profile of the samples:**

	<u>CSC4</u>	<u>CSC5</u>	<u>CSCB</u>	<u>CSCS</u>
Average # of del. prior offense:	3.00	3.46	3.70	3.68
Average # of fel. prior offense:	1.85	1.62	2.27	1.80



**Cumulative Recidivism Rates by Months**



**DALLAS COUNTY JUVENILE DEPARTMENT  
RECIDIVISM TRACKING PROGRAM**

SAMPLE	<b>Lyle Medlock Treatment Center</b>	PAGE NO.	4.1
MEASURE	<b>SUCCESSFUL COMPLETIONS IN 1999</b>	DATE	09/30/01

Profile of youths surveyed 12 months after successful discharge

Sample Size:	112	<u>Adjudication Rate</u>		N	%	Total RRR-6 Months	35	31%
		6 Months:	17	15%		Del. RRR-6 Months	15	13%
		12 Months:	32	29%		Total RRR-12 Months	63	56%
		24 Months:				Del. RRR-12 Months	38	34%
						Total RRR-24 Months		
					Del. RRR-24 Months			

Profile	Total RRR		Del. RRR		Total RRR		Del. RRR		Total RRR		Del. RRR	
	N	%	N	%	N	%	N	%	N	%	N	%
<u>Gender</u>												
Male	112	100%	35	31%	15	13%	63	56%	38	34%		
Female												
<u>Race</u>												
Black	47	42%	16	34%	7	15%	24	51%	12	26%		
Hispanic	41	37%	14	34%	5	12%	27	66%	18	44%		
White	22	20%	5	23%	3	14%	11	50%	8	36%		
Other	2	2%	0	0%	0	0%	1	50%	0	0%		
<u>Age. at Discharge</u>												
10-13	2	2%	0	0%	0	0%	2	100%	2	100%		
14-15	40	36%	15	38%	5	13%	28	70%	16	40%		
16 & over	70	63%	20	29%	10	14%	33	47%	20	29%		
<u>Age. 1st Referral</u>												
10-13	64	57%	19	30%	7	11%	39	61%	26	41%		
14-15	43	38%	16	37%	8	19%	23	53%	12	28%		
16 & over	5	4%	0	0%	0	0%	1	20%	0	0%		
<u>Child Lives With</u>												
Both	11	10%	5	45%	3	27%	7	64%	4	36%		
Father	4	4%	1	25%	1	25%	1	25%	1	25%		
Mother	37	33%	10	27%	4	11%	20	54%	13	35%		
Other/Unknown	60	54%	19	32%	7	12%	35	58%	20	33%		
<u>Treatment Module</u>												
CSC4	26	23%	10	38%	4	15%	16	62%	9	35%		
CSC5	13	12%	5	38%	2	15%	8	62%	4	31%		
CSCB	33	29%	12	36%	7	21%	17	52%	10	30%		
CSCS	40	36%	8	20%	2	5%	22	55%	15	38%		
<u>Prior Felony Offenses</u>												
<3	80	71%	23	29%	8	10%	45	56%	27	34%		
3-4	25	22%	7	28%	6	24%	13	52%	10	40%		
>=5	7	6%	5	71%	1	14%	5	71%	1	14%		

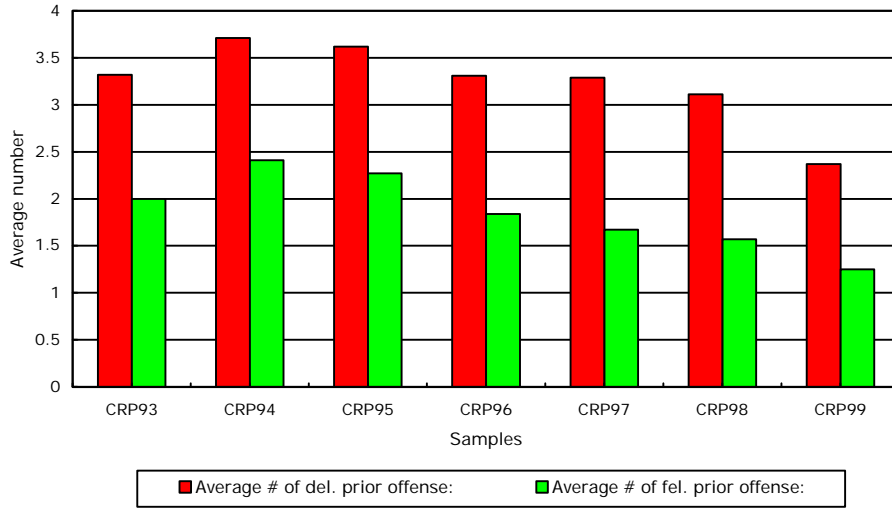
## DALLAS COUNTY JUVENILE DEPARTMENT RECIDIVISM TRACKING PROGRAM

SAMPLE	CONTRACT RESIDENTIAL PLACEMENT	PAGE NO.	5.0
MEASURE	NARRATIVE AND INDEX TO DATA	DATE	09/30/01

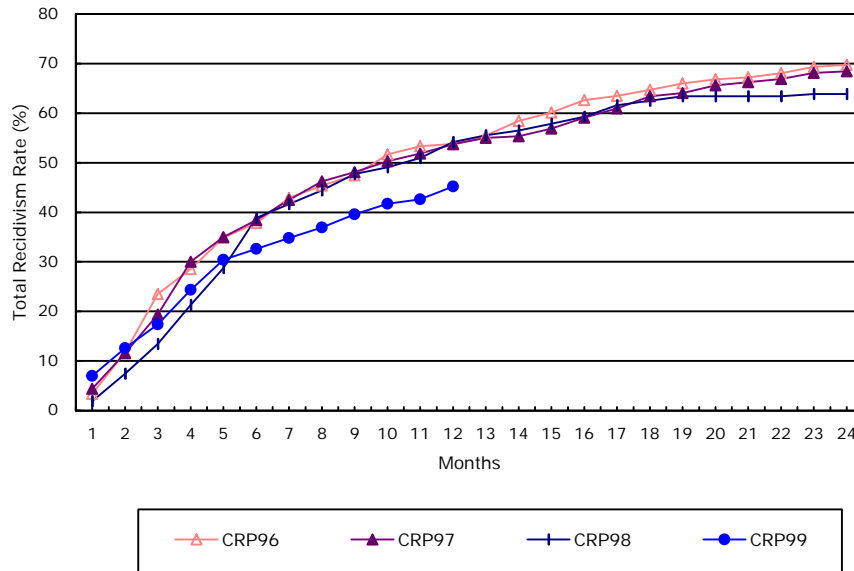
Dallas County Juvenile Department contracts with approximately 30 residential programs, both within Texas and in other states. Juveniles who successfully complete these programs spend from six months to one year in residence, receiving specialized treatment.

### Offense profile of the samples:

	CRP94	CRP95	CRP96	CRP97	CRP98	CRP99
Average # of del. prior offense:	3.71	3.66	3.31	3.29	3.11	2.37
Average # of fel. prior offense:	2.41	2.31	1.84	1.67	1.57	1.25



### Cumulative Recidivism Rates by Months



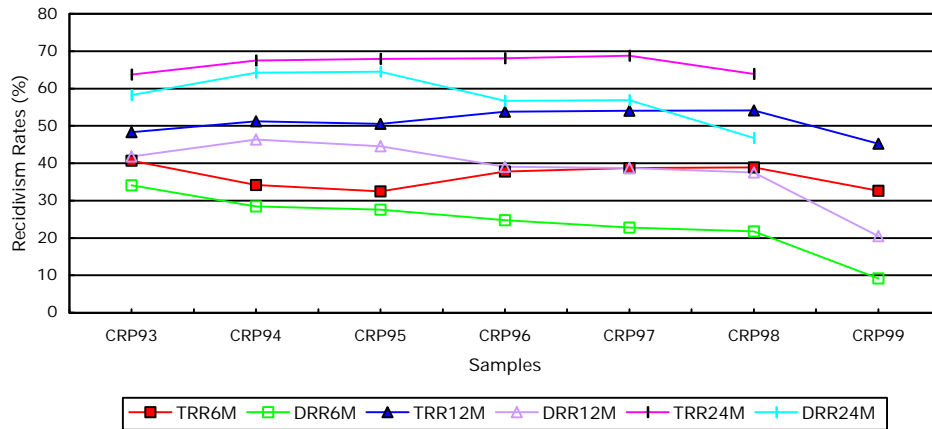


## DALLAS COUNTY JUVENILE DEPARTMENT RECIDIVISM TRACKING PROGRAM

SAMPLE	CONTRACT RESIDENTIAL PLACEMENT	PAGE NO.	5.1
MEASURE	SUMMARY OF AVAILABLE DATA	DATE	09/30/01

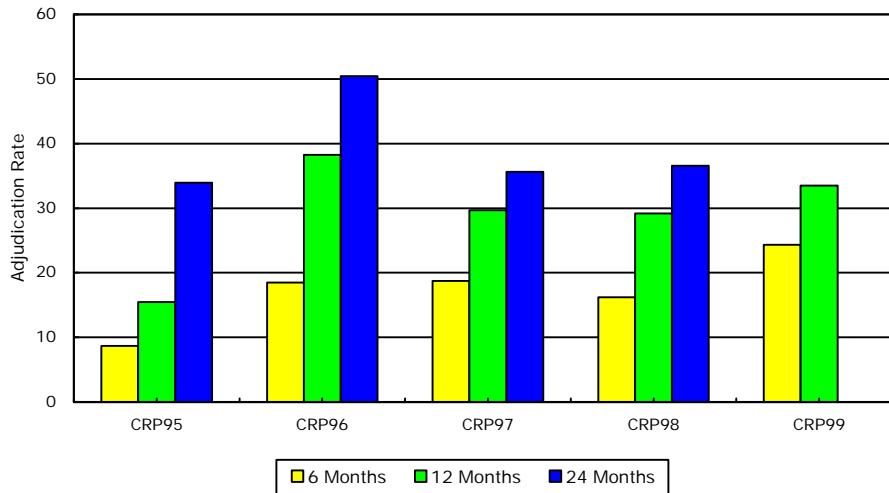
### Recidivism Rates

	Total Recidivism (%)			Delinquent Recidivism (%)		
	6 Months	12 Months	24 Months	6 Months	12 Months	24 Months
<u>CRP94</u>	34.15	51.22	67.48	28.46	46.34	64.23
<u>CRP95</u>	32.45	50.57	67.92	27.55	44.53	64.53
<u>CRP96</u>	37.82	53.78	68.07	24.79	39.08	56.72
<u>CRP97</u>	38.75	54.06	68.75	22.81	38.75	56.88
<u>CRP98</u>	38.89	54.17	63.89	21.76	37.50	46.76
<u>CRP99</u>	32.61	45.22		9.13	20.43	



### Re-adjudication Rate

	6 Months	12 Months	24 Months
<u>CRP95</u>	8.68	15.47	33.96
<u>CRP96</u>	18.49	38.24	50.42
<u>CRP97</u>	18.75	29.69	35.63
<u>CRP98</u>	16.20	29.17	36.57
<u>CRP99</u>	24.35	33.48	



**DALLAS COUNTY JUVENILE DEPARTMENT  
RECIDIVISM TRACKING PROGRAM**

SAMPLE	CONTRACT RESIDENTIAL PLACEMENT	PAGE NO.	5.2
MEASURE	SUCCESSFUL COMPLETIONS IN 1998	DATE	09/30/01

CRP98 profile of recidivism after 24 months

Sample Size:	216	<u>Adjudication Rate</u>		%	Total RRR-6 Months	N	%
					Del. RRR-6 Months	84	39%
					Total RRR- 12 Months	117	54%
					Del. RRR-12 Months	81	38%
					Total RRR- 24 Months	138	64%
					Del. RRR-24 Months	101	47%
		6 Months:	35	16%			
		12 Months:	63	29%			
		24 Months:	79	37%			

	<u>Profile</u>		<u>Total RRR</u>		<u>Del. RRR</u>		<u>Total RRR</u>		<u>Del. RRR</u>		<u>Total RRR</u>		<u>Del. RRR</u>	
	N	% of Total	6 Months		6 Months		12 Months		12 Months		24 Months		24 Months	
<u>Gender</u>			N	%	N	%	N	%	N	%	N	%	N	%
Male	174	76%	72	41%	45	26%	101	58%	75	43%	118	68%	92	53%
Female	42	18%	12	29%	2	5%	16	38%	6	14%	20	48%	9	21%
<u>Race</u>														
Black	91	40%	38	42%	23	25%	56	62%	44	48%	65	71%	52	57%
Hispanic	62	27%	26	42%	12	19%	33	53%	18	29%	41	66%	26	42%
White	60	26%	19	32%	12	20%	27	45%	19	32%	30	50%	22	37%
Other	3	1%	1	33%	0		1	33%	0		2	67%	1	33%
<u>Age, at Discharge</u>														
10-13	16	7%	9	56%	5	31%	11	69%	6	38%	12	75%	7	44%
14-15	74	32%	35	47%	20	27%	47	64%	33	45%	58	78%	42	57%
16 & over	126	55%	40	32%	22	17%	59	47%	42	33%	68	54%	52	41%
<u>Age, 1st Referral</u>														
10-13	112	49%	47	42%	30	27%	66	59%	50	45%	79	71%	62	55%
14-15	89	39%	32	36%	14	16%	45	51%	27	30%	52	58%	34	38%
16 & over	15	7%	5	33%	3	20%	6	40%	4	27%	7	47%	5	33%
<u>Child Lives With</u>														
Both	13	6%	4	31%	3	23%	7	54%	7	54%	11	85%	11	85%
Father	8	3%	3	38%	2	25%	3	38%	2	25%	3	38%	2	25%
Mother	64	28%	29	45%	15	23%	37	58%	23	36%	44	69%	30	47%
Other	131	57%	48	37%	27	21%	70	53%	49	37%	80	61%	58	44%
<u>Level of Care</u>														
III & IV	145	63%	58	40%	33	23%	81	56%	57	39%	93	64%	69	48%
V & VI	71	31%	26	37%	14	20%	36	51%	24	34%	45	63%	32	45%
<u>Prior Felony Offenses</u>														
None	44	19%	14	32%	7	16%	18	41%	11	25%	22	50%	15	34%
1-2	122	53%	50	41%	28	23%	72	59%	50	41%	85	70%	63	52%
>=3	50	22%	20	40%	12	24%	27	54%	20	40%	31	62%	23	46%

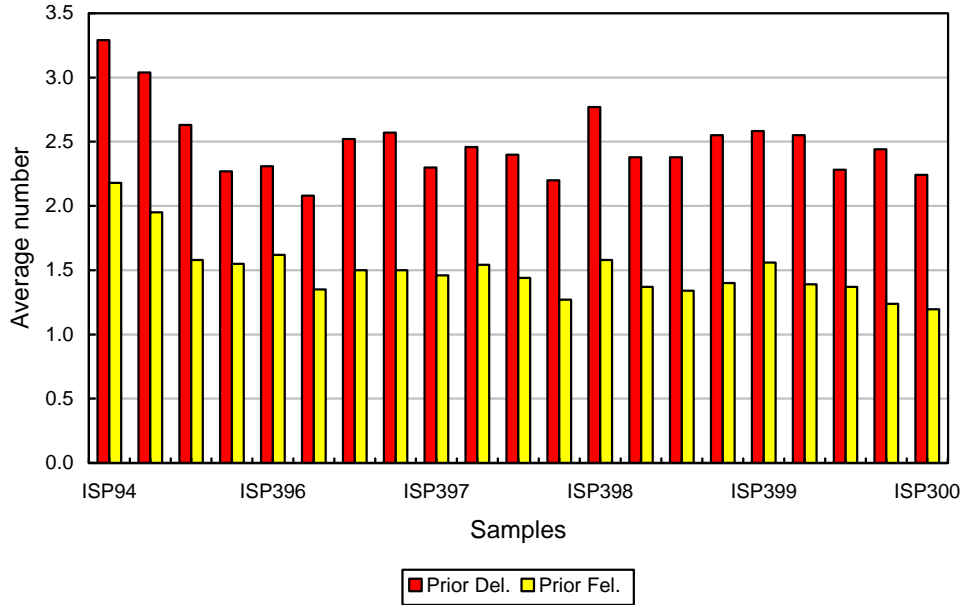
## DALLAS COUNTY JUVENILE DEPARTMENT RECIDIVISM TRACKING PROGRAM

SAMPLE	HOME PROBATION - INTENSIVE SUPERVISION	PAGE NO.	6.0
MEASURE	NARRATIVE AND INDEX TO DATA	DATE	09/30/01

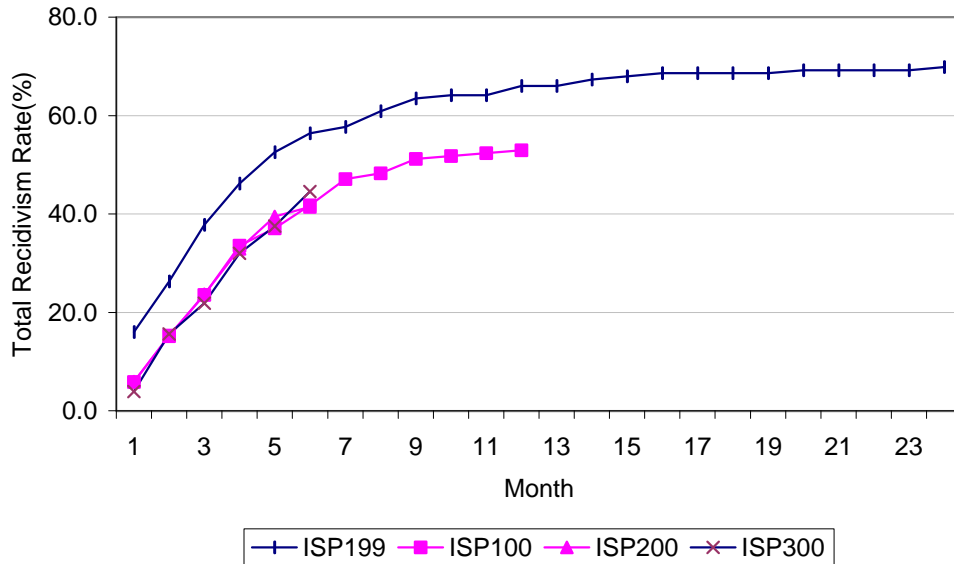
This measure tracks juveniles who are adjudicated and sent home on probation intensive supervision, either with or without such services as day treatment programs.

**Offense profile of the samples:**

	<u>ISP199</u>	<u>ISP299</u>	<u>ISP399</u>	<u>ISP499</u>	<u>ISP100</u>	<u>ISP200</u>	<u>ISP300</u>
Average # of del. prior offense:	2.38	2.55	2.58	2.55	2.28	2.44	2.24
Average # of felony prior offense:	1.34	1.40	1.56	1.39	1.37	1.24	1.20



**Cumulative Recidivism Rates by Months**

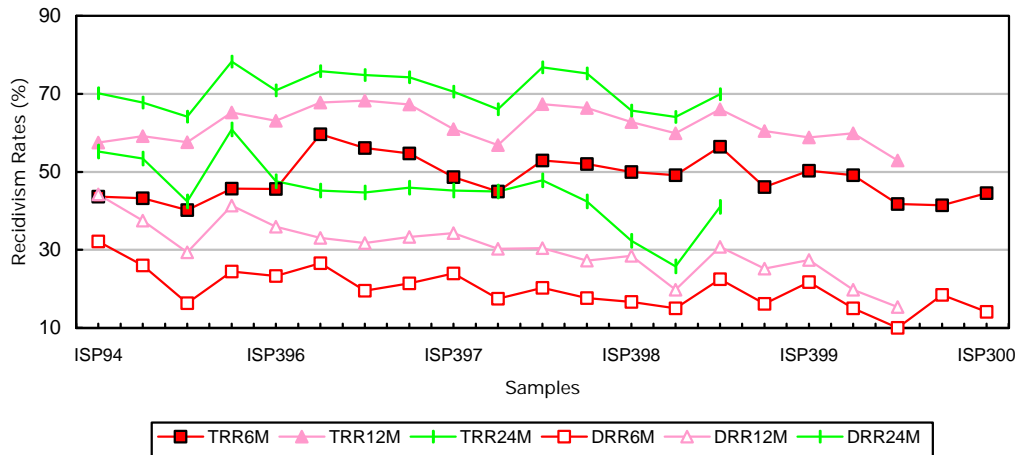


## DALLAS COUNTY JUVENILE DEPARTMENT RECIDIVISM TRACKING PROGRAM

SAMPLE	HOME PROBATION - INTENSIVE SUPERVISION	PAGE NO.	6.1
MEASURE	SUMMARY OF AVAILABLE DATA	DATE	09/30/01

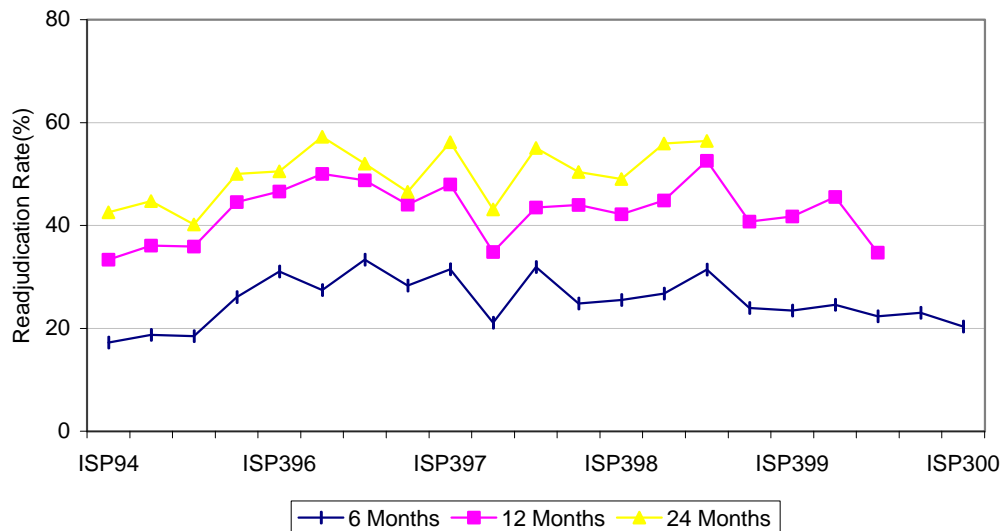
### Recidivism Rates

	Total Recidivism (%)			Delinquent Recidivism (%)		
	6 Months	12 Months	24 Months	6 Months	12 Months	24 Months
ISP199	56.41	66.03	69.87	22.44	30.77	41.03
ISP299	46.11	60.48		16.17	25.15	
ISP399	50.29	58.86		21.71	27.43	
ISP499	49.10	59.88		14.97	19.76	
ISP100	41.76	52.94		10.00	15.29	
ISP200	41.45			18.42		
ISP300	44.53			14.06		



### Re-adjudication Rate\*:

	6 Months	12 Months	24 Months
ISP498	26.77	44.88	55.91
ISP199	31.41	52.56	56.41
ISP299	23.95	40.72	
ISP399	23.43	41.71	
ISP499	24.55	45.51	
ISP100	22.35	34.71	
ISP200	23.03		
ISP300	20.31		



\*Limited to adjudications within the juvenile system.

**DALLAS COUNTY JUVENILE DEPARTMENT  
RECIDIVISM TRACKING PROGRAM**

<b>SAMPLE</b>	<b>HOME PROBATION - INTENSIVE SUPERVISION</b>	<b>PAGE NO.</b>	<b>6.2</b>
<b>MEASURE</b>	<b>ADJUDICATED DURING 1ST QUARTER OF 99</b>	<b>DATE</b>	<b>09/30/01</b>

ISP199 Profile 24 Months after Adjudicated on Probation

		<u>Adjudication Rate</u>				N	%
Sample Size:	156	N	%	Total RRR-6 Months		88	56%
		6 Months:	49 31%	Del. RRR-6 Months		35	22%
		12 Months:	82 53%	Total RRR-12 Months		103	66%
		24 Months:	88 56%	Del. RRR-12 Months		48	31%
				Total RRR-24 Months		109	70%
				Del. RRR-24 Months		64	41%

	<u>Profile</u>		<u>Total RRR</u>		<u>Del. RRR</u>		<u>Total RRR</u>		<u>Del. RRR</u>		<u>Total RRR</u>		<u>Del. RRR</u>	
	N	% of Total	6 Months		6 Months		12 Months		12 Months		24 Months		24 Months	
<u>Gender</u>			N	%	N	%	N	%	N	%	N	%	N	%
Male	135	87%	76	56%	33	24%	88	65%	45	33%	94	70%	60	44%
Female	21	13%	12	57%	2	10%	15	71%	3	14%	15	71%	4	19%
<u>Race</u>														
Black	57	37%	39	68%	17	30%	45	79%	22	39%	47	82%	29	51%
Hispanic	60	38%	31	52%	14	23%	36	60%	18	30%	39	65%	24	40%
White	38	24%	18	47%	4	11%	22	58%	8	21%	23	61%	11	29%
Other	1	1%	0		0		0		0		0		0	
<u>Age When Adjudicated</u>														
10-13	25	16%	9	36%	1	4%	14	56%	7	28%	15	60%	9	36%
14-15	59	38%	41	69%	15	25%	47	80%	21	36%	48	81%	28	47%
16 and Over	72	46%	38	53%	19	26%	42	58%	20	28%	46	64%	27	38%
<u>Age, 1st Referral</u>														
10-13	72	46%	41	57%	16	22%	49	68%	25	35%	53	74%	34	47%
14-15	68	44%	39	57%	15	22%	46	68%	19	28%	48	71%	25	37%
16 and Over	16	10%	8	50%	4	25%	8	50%	4	25%	8	50%	5	31%
<u>Child Lives With</u>														
Both	30	19%	14	47%	6	20%	16	53%	9	30%	17	57%	12	40%
Father	11	7%	6	55%	1	9%	7	64%	2	18%	7	64%	2	18%
Mother	61	39%	27	44%	11	18%	37	61%	14	23%	39	64%	19	31%
Other	54	35%	41	76%	17	31%	43	80%	23	43%	46	85%	31	57%
<u>Months from 1st Ref.</u>														
Under 6 Month:	35	22%	18	51%	4	11%	21	60%	10	29%	22	63%	13	37%
6-12 Months	28	18%	14	50%	7	25%	18	64%	8	29%	20	71%	12	43%
1-2 Years	54	35%	35	65%	13	24%	41	76%	16	30%	41	76%	21	39%
Over 2 Years	39	25%	21	54%	11	28%	23	59%	14	36%	26	67%	18	46%
<u>Prior Felony Offenses</u>														
None	18	12%	12	67%	3	17%	13	72%	6	33%	13	72%	7	39%
1-2	119	76%	62	52%	25	21%	76	64%	35	29%	81	68%	46	39%
3 & Over	19	12%	14	74%	7	37%	14	74%	7	37%	15	79%	11	58%

\*Length of time from youth's first referral to current disposition

**DALLAS COUNTY JUVENILE DEPARTMENT  
RECIDIVISM TRACKING PROGRAM**

SAMPLE	<b>HOME PROBATION - INTENSIVE SUPERVISION</b>	PAGE NO.	6.3
MEASURE	<b>ADJUDICATED DURING 1ST QUARTER OF 2000</b>	DATE	09/30/01

ISP100 Profile 12 Months after Adjudicated on Probation

		<u>Adjudication Rate</u>		Total RRR-6 Months		N	%
Sample Size:	170	N	%	Del. RRR-6 Months	Total RRR-12 Months	Del. RRR-12 Months	Total RRR-24 Months
		38	22%	17	90	26	42%
	6 Months:	59	35%	17	90	26	10%
	12 Months:			17	90	26	53%
	24 Months:			17	90	26	15%

	<u>Profile</u>		<u>Total RRR</u>		<u>Del. RRR</u>		<u>Total RRR</u>		<u>Del. RRR</u>		<u>Total RRR</u>		<u>Del. RRR</u>	
	N	% of Total	6 Months		6 Months		12 Months		12 Months		24 Months		24 Months	
<u>Gender</u>			N	%	N	%	N	%	N	%	N	%	N	%
Male	152	89%	65	43%	16	11%	82	54%	24	16%				
Female	18	11%	6	33%	1	6%	8	44%	2	11%				
<u>Race</u>														
Black	71	42%	29	41%	7	10%	36	51%	9	13%				
White	64	38%	32	50%	8	13%	37	58%	13	20%				
Hispanic	34	20%	9	26%	2	6%	16	47%	4	12%				
Other	1	1%	1	100%	0	0%	1	100%	0	0%				
<u>Age When Adjudicated</u>														
10-13	14	8%	4	29%	1	7%	8	57%	2	14%				
14-15	68	40%	39	57%	11	16%	45	66%	15	22%				
16 and Over	88	52%	28	32%	5	6%	37	42%	9	10%				
<u>Age, 1st Referral</u>														
10-13	62	36%	34	55%	6	10%	42	68%	8	13%				
14-15	82	48%	32	39%	10	12%	43	52%	16	20%				
16 and Over	26	15%	5	19%	1	4%	5	19%	2	8%				
<u>Child Lives With</u>														
Both	36	21%	10	28%	6	17%	12	33%	8	22%				
Father	8	5%	5	63%	1	13%	6	75%	1	13%				
Mother	62	36%	21	34%	6	10%	31	50%	9	15%				
Other	64	38%	35	55%	4	6%	41	64%	8	13%				
<u>Months from 1st Ref.</u>														
Under 6 Month:	49	29%	14	29%	7	14%	20	41%	8	16%				
6-12 Months	36	21%	19	53%	4	11%	20	56%	8	22%				
1-2 Years	42	25%	15	36%	2	5%	26	62%	6	14%				
Over 2 Years	43	25%	23	53%	4	9%	24	56%	4	9%				
<u>Prior Felony Offenses</u>														
None	23	14%	15	65%	3	13%	17	74%	7	30%				
1-2	129	76%	46	36%	9	7%	63	49%	13	10%				
3 & Over	18	11%	10	56%	5	28%	10	56%	6	33%				

\*Length of time from youth's first referral to current disposition

**DALLAS COUNTY JUVENILE DEPARTMENT  
RECIDIVISM TRACKING PROGRAM**

<b>SAMPLE</b>	<b>HOME PROBATION - INTENSIVE SUPERVISION</b>	<b>PAGE NO.</b>	<b>6.4</b>
<b>MEASURE</b>	<b>ADJUDICATED DURING 3RD QUARTER OF 2000</b>	<b>DATE</b>	<b>09/30/01</b>

ISP300 Profile 6 Months after Adjudicated on Probation

Sample Size: 128	<u>Adjudication Rate</u>				Total RRR-6 Months	N	%
			N	%	Del. RRR-6 Months	57	45%
	6 Months:		26	20%	Total RRR-12 Months	18	14%
	12 Months:				Del. RRR-12 Months		
	24 Months:				Total RRR-24 Months		
					Del. RRR-24 Months		

	<u>Profile</u>		<u>Total RRR</u>		<u>Del. RRR</u>		<u>Total RRR</u>		<u>Del. RRR</u>		<u>Total RRR</u>		<u>Del. RRR</u>	
	N	% of Total	6 Months		6 Months		12 Months		12 Months		24 Months		24 Months	
<u>Gender</u>			N	%	N	%	N	%	N	%	N	%	N	%
Male	106	83%	42	40%	16	15%								
Female	22	17%	15	68%	2	9%								
<u>Race</u>														
Black	38	30%	17	45%	7	18%								
Hispanic	57	45%	24	42%	7	12%								
White	31	24%	15	48%	4	13%								
Other	2	2%	1	50%	0	0%								
<u>Age When Adjudicated</u>														
10-13	13	10%	6	46%	2	15%								
14-15	58	45%	29	50%	9	16%								
16 and Over	57	45%	22	39%	7	12%								
<u>Age, 1st Referral</u>														
10-13	59	46%	31	53%	10	17%								
14-15	54	42%	22	41%	7	13%								
16 and Over	15	12%	4	27%	1	7%								
<u>Child Lives With</u>														
Both	24	19%	6	25%	3	13%								
Father	5	4%	4	80%	2	40%								
Mother	40	31%	17	43%	6	15%								
Other	59	46%	30	51%	7	12%								
<u>Months from 1st Ref.</u>														
Under 6 Month:	36	28%	10	28%	3	8%								
6-12 Months	20	16%	11	55%	4	20%								
1-2 Years	33	26%	20	61%	6	18%								
Over 2 Years	39	30%	16	41%	5	13%								
<u>Prior Felony Offenses</u>														
None	17	13%	10	59%	0									
1-2	105	82%	44	42%	17	16%								
3 & Over	6	5%	3	50%	1	17%								

\*Length of time from youth's first referral to current disposition

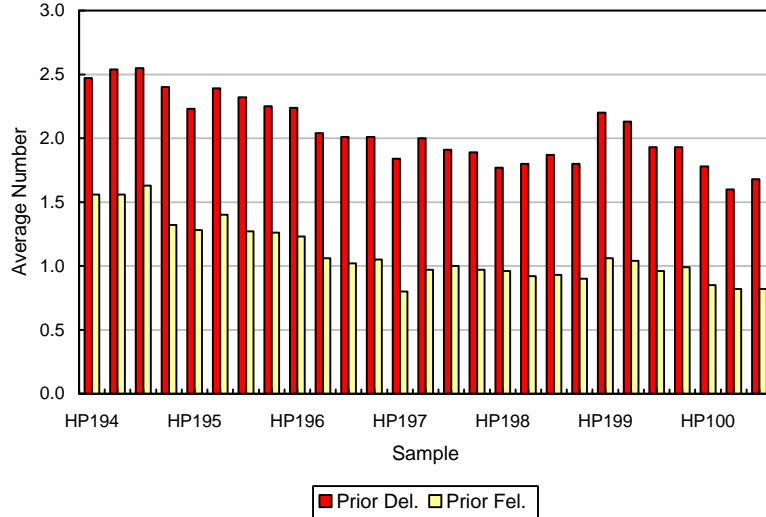
**DALLAS COUNTY JUVENILE DEPARTMENT  
RECIDIVISM TRACKING PROGRAM**

SAMPLE	HOME PROBATION	PAGE NO	7.0
MEASURE	NARRATIVE AND INDEX TO DATA	DATE	09/30/01

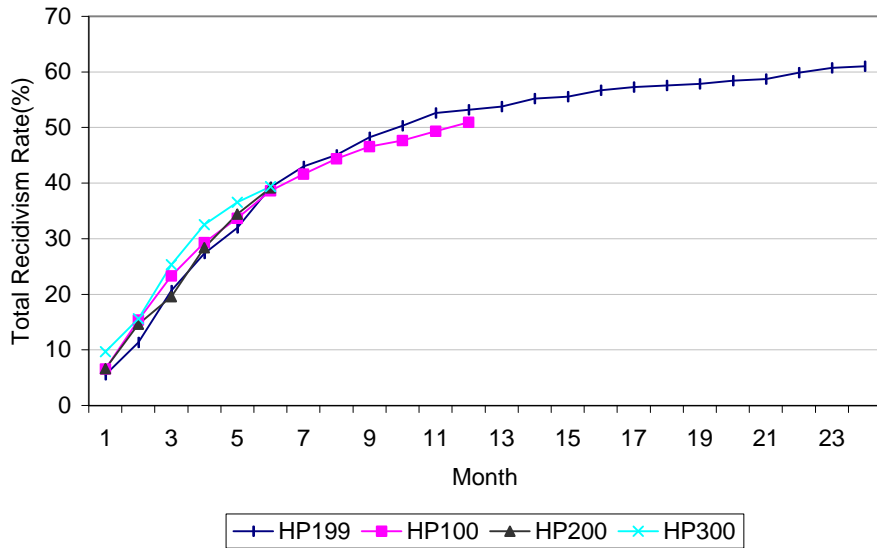
This measure tracks juveniles who are adjudicated and sent home on probation, either with or without such services as day treatment programs.

**Offense profile of the samples:**

	<u>HP199</u>	<u>HP299</u>	<u>HP399</u>	<u>HP499</u>	<u>HP100</u>	<u>HP200</u>	<u>HP300</u>
Average # of del. prior offense:	2.20	2.13	1.93	1.93	1.78	1.60	1.68
Average # of felony prior offenses	1.06	1.04	0.96	0.99	0.85	0.82	0.82



**Cumulative Recidivism Rates by Months**



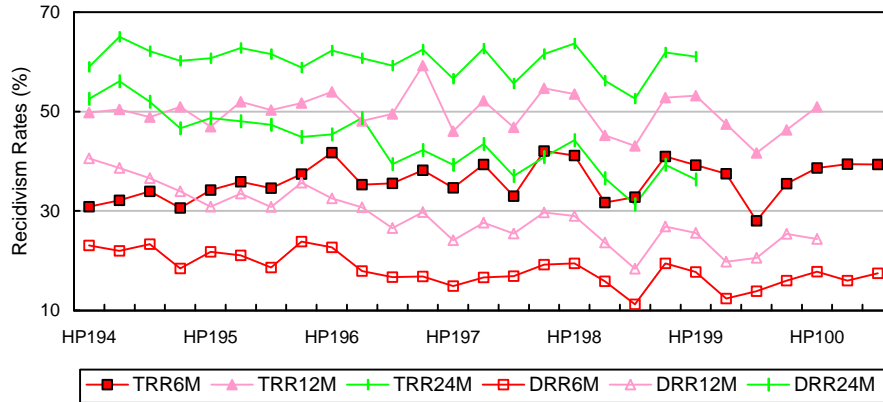


## DALLAS COUNTY JUVENILE DEPARTMENT RECIDIVISM TRACKING PROGRAM

SAMPLE	HOME PROBATION	PAGE NO.	7.1
MEASURE	SUMMARY OF AVAILABLE DATA	DATE	09/30/01

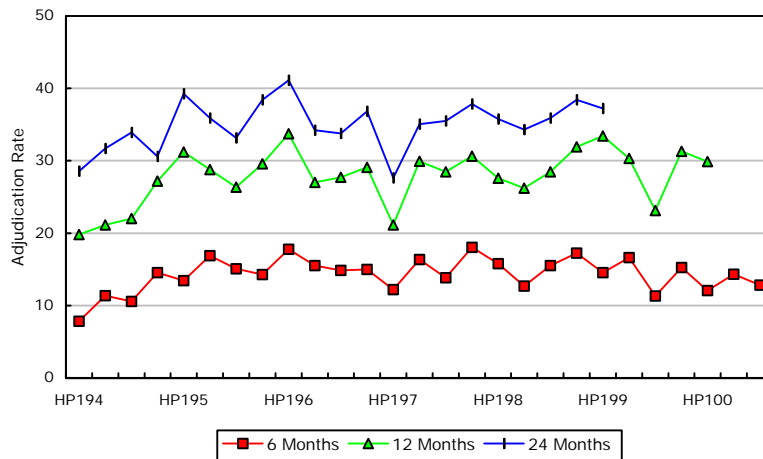
### Recidivism Rates

	Total Recidivism (%)			Delinquent Recidivism (%)		
	6 Months	12 Months	24 Months	6 Months	12 Months	24 Months
HP498	40.96	52.82	61.86	19.49	26.84	39.27
HP199	39.24	53.20	61.05	17.73	25.58	36.34
HP299	37.47	47.49		12.40	19.79	
HP399	28.02	41.65		13.88	20.57	
HP499	35.47	46.31		16.01	25.37	
HP100	38.63	50.96		17.81	24.38	
HP200	39.39			15.98		
HP300	39.36			17.50		



### Re-adjudication Rate\*:

	6 Months	12 Months	24 Months
HP199	14.53	33.43	37.21
HP299	16.62	30.34	
HP399	11.31	23.14	
HP499	15.27	31.28	
HP100	12.05	29.86	
HP200	14.33		
HP300	12.81		



\*Limited to adjudications within the juvenile system.

**DALLAS COUNTY JUVENILE DEPARTMENT  
RECIDIVISM TRACKING PROGRAM**

<b>SAMPLE</b>	<b>HOME PROBATION</b>	<b>PAGE NO.</b>	<b>7.2</b>
<b>MEASURE</b>	<b>ADJUDICATED DURING 1ST QUARTER OF 99</b>	<b>DATE</b>	<b>09/30/01</b>

HP991 Profile 24 Months after Adjudicated on Probation

Sample Size: 344	<u>Adjudication Rate</u>				Total RRR-6 Months	N	%
		N	%		Del. RRR-6 Months	135	39%
	6 Months:	50	15%		Total RRR-12 Months	61	18%
	12 Months:	115	33%		Del. RRR-12 Months	183	53%
	24 Months:	128	37%		Total RRR-24 Months	88	26%
					Del. RRR-24 Months	210	61%
						125	36%

	<u>Profile</u>		<u>Total RRR</u>		<u>Del. RRR</u>		<u>Total RRR</u>		<u>Del. RRR</u>		<u>Total RRR</u>		<u>Del. RRR</u>	
	N	% of Total	6 Months		12 Months		24 Months		6 Months		12 Months		24 Months	
<u>Gender</u>			N	%	N	%	N	%	N	%	N	%	N	%
Male	287	83%	111	39%	54	19%	150	52%	80	28%	174	61%	115	40%
Female	57	17%	24	42%	7	12%	33	58%	8	14%	36	63%	10	18%
<u>Race</u>														
Black	137	40%	63	46%	28	20%	79	58%	36	26%	92	67%	57	42%
Hispanic	128	37%	49	38%	21	16%	71	55%	35	27%	80	63%	45	35%
White	73	21%	21	29%	11	15%	31	42%	16	22%	36	49%	22	30%
Other	6	2%	2	33%	1	17%	2	33%	1	17%	2	33%	1	17%
<u>Age When Adjudicated</u>														
10-13	43	13%	15	35%	8	19%	18	42%	10	23%	23	53%	16	37%
14-15	139	40%	52	37%	21	15%	78	56%	35	25%	88	63%	50	36%
16 and Over	162	47%	68	42%	32	20%	87	54%	43	27%	99	61%	59	36%
<u>Age, 1st Referral</u>														
10-13	130	38%	47	36%	19	15%	70	54%	28	22%	82	63%	46	35%
14-15	157	46%	65	41%	30	19%	82	52%	44	28%	92	59%	57	36%
16 and Over	57	17%	23	40%	12	21%	31	54%	16	28%	36	63%	22	39%
<u>Child Lives With</u>														
Both	59	17%	13	22%	7	12%	19	32%	11	19%	24	41%	16	27%
Father	19	6%	8	42%	3	16%	10	53%	5	26%	11	58%	8	42%
Mother	137	40%	51	37%	23	17%	65	47%	29	21%	76	55%	44	32%
Other	129	38%	63	49%	28	22%	89	69%	43	33%	99	77%	57	44%
<u>Months from 1st Ref.</u>														
Under 6 Months	111	32%	41	37%	15	14%	55	50%	27	24%	63	57%	35	32%
6-12 Months	91	26%	30	33%	13	14%	45	49%	18	20%	54	59%	32	35%
1-2 Years	71	21%	36	51%	21	30%	44	62%	25	35%	49	69%	32	45%
Over 2 Years	71	21%	28	39%	12	17%	39	55%	18	25%	44	62%	26	37%
<u>Prior Felony Offenses</u>														
None	87	25%	48	55%	20	23%	65	75%	32	37%	72	83%	43	49%
1-2	236	69%	77	33%	37	16%	104	44%	51	22%	123	52%	75	32%
3 & Over	21	6%	10	48%	4	19%	14	67%	5	24%	15	71%	7	33%

\*Length of time from youth's first referral to current disposition

**DALLAS COUNTY JUVENILE DEPARTMENT  
RECIDIVISM TRACKING PROGRAM**

SAMPLE	HOME PROBATION	PAGE NO.	7.3
MEASURE	ADJUDICATED DURING 1ST QUARTER OF 2000	DATE	09/30/01

HP001 Profile 24 Months after Adjudicated on Probation

Sample Size:	365	<u>Adjudication Rate</u>		Total RRR-6 Months	N	%	
		N	%	Del. RRR-6 Months	141	39%	
		6 Months:	44	12%	Total RRR-12 Months	186	51%
		12 Months:	109	30%	Del. RRR-12 Months	89	24%
		24 Months:			Total RRR-24 Months		
				Del. RRR-24 Months			

	<u>Profile</u>		<u>Total RRR</u>		<u>Del. RRR</u>		<u>Total RRR</u>		<u>Del. RRR</u>		<u>Total RRR</u>		<u>Del. RRR</u>	
	N	% of Total	N	%	N	%	N	%	N	%	N	%	N	%
<u>Gender</u>														
Male	302	83%	116	38%	56	19%	151	50%	75	25%				
Female	63	17%	25	40%	9	14%	35	56%	14	22%				
<u>Race</u>														
Black	143	39%	53	37%	26	18%	72	50%	33	23%				
Hispanic	141	39%	60	43%	25	18%	77	55%	36	26%				
White	73	20%	25	34%	13	18%	32	44%	18	25%				
Other	8	2%	3	38%	1	13%	5	63%	2	25%				
<u>Age When Adjudicated</u>														
10-13	55	15%	20	36%	12	22%	26	47%	15	27%				
14-15	150	41%	64	43%	26	17%	90	60%	39	26%				
16 and Over	160	44%	57	36%	27	17%	70	44%	35	22%				
<u>Age, 1st Referral</u>														
10-13	151	41%	70	46%	31	21%	93	62%	44	29%				
14-15	143	39%	52	36%	23	16%	69	48%	30	21%				
16 and Over	71	19%	19	27%	11	15%	24	34%	15	21%				
<u>Child Lives With</u>														
Both	64	18%	17	27%	8	13%	23	36%	11	17%				
Mother	27	7%	10	37%	5	19%	15	56%	7	26%				
Father	154	42%	54	35%	27	18%	71	46%	34	22%				
Other	120	33%	60	50%	25	21%	77	64%	37	31%				
<u>Months from 1st Ref.</u>														
Under 6 Months	150	41%	49	33%	31	21%	65	43%	38	25%				
6-12 Months	76	21%	29	38%	10	13%	37	49%	13	17%				
1-2 Years	64	18%	24	38%	7	11%	34	53%	13	20%				
Over 2 Years	75	21%	39	52%	17	23%	50	67%	25	33%				
<u>Prior Felony Offenses</u>														
None	119	33%	55	46%	30	25%	72	61%	39	33%				
1-2	239	65%	83	35%	33	14%	110	46%	47	20%				
3 & Over	7	2%	3	43%	2	29%	4	57%	3	43%				

\*Length of time from youth's first referral to current disposition

**DALLAS COUNTY JUVENILE DEPARTMENT  
RECIDIVISM TRACKING PROGRAM**

<b>SAMPLE</b>	<b>HOME PROBATION</b>	<b>PAGE NO.</b>	<b>7.4</b>
<b>MEASURE</b>	<b>ADJUDICATED DURING 3RD QUARTER OF 2000</b>	<b>DATE</b>	<b>09/30/01</b>

HP003 Profile 24 Months after Adjudicated on Probation

Sample Size:	320	<u>Adjudication Rate</u>		Total RRR-6 Months	N	%
		6 Months:	41	13%	126	39%
		12 Months:			56	18%
		24 Months:				
				Del. RRR-6 Months		
				Total RRR-12 Months		
				Del. RRR-12 Months		
				Total RRR-24 Months		
				Del. RRR-24 Months		

Profile	Total RRR		Del. RRR		Total RRR		Del. RRR		Total RRR		Del. RRR	
	% of		6 Months		12 Months		24 Months		Total RRR		Del. RRR	
	N	Total	N	%	N	%	N	%	N	%	N	%
<u>Gender</u>												
Male	251	78%	94	37%	46	18%						
Female	69	22%	32	46%	10	14%						
<u>Race</u>												
Black	136	43%	53	39%	25	18%						
Hispanic	92	29%	34	37%	11	12%						
White	84	26%	34	40%	17	20%						
Other	8	3%	5	63%	3	38%						
<u>Age When Adjudicated</u>												
10-13	54	17%	17	31%	5	9%						
14-15	125	39%	59	47%	26	21%						
16 and Over	141	44%	50	35%	25	18%						
<u>Age, 1st Referral</u>												
10-13	127	40%	54	43%	19	15%						
14-15	128	40%	47	37%	21	16%						
16 and Over	65	20%	25	38%	16	25%						
<u>Child Lives With</u>												
Both	56	18%	10	18%	6	11%						
Father	26	8%	13	50%	4	15%						
Mother	117	37%	36	31%	17	15%						
Other	121	38%	67	55%	29	24%						
<u>Months from 1st Ref.</u>												
Under 6 Months	142	44%	57	40%	33	23%						
6-12 Months	65	20%	18	28%	7	11%						
1-2 Years	51	16%	22	43%	7	14%						
Over 2 Years	62	19%	29	47%	9	15%						
<u>Prior Felony Offenses</u>												
None	106	33%	58	55%	34	32%						
1-2	209	65%	65	31%	20	10%						
3 & Over	5	2%	3	60%	2	40%						

\*Length of time from youth's first referral to current disposition

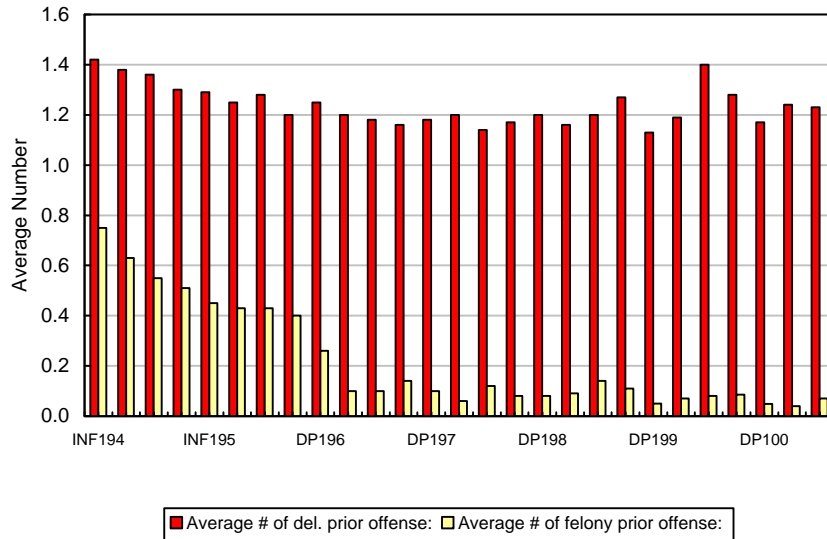
## DALLAS COUNTY JUVENILE DEPARTMENT RECIDIVISM TRACKING PROGRAM

SAMPLE	DEFERRED PROSECUTION	PAGE NO.	8.0
MEASURE	NARRATIVE AND INDEX TO DATA	DATE	09/30/01

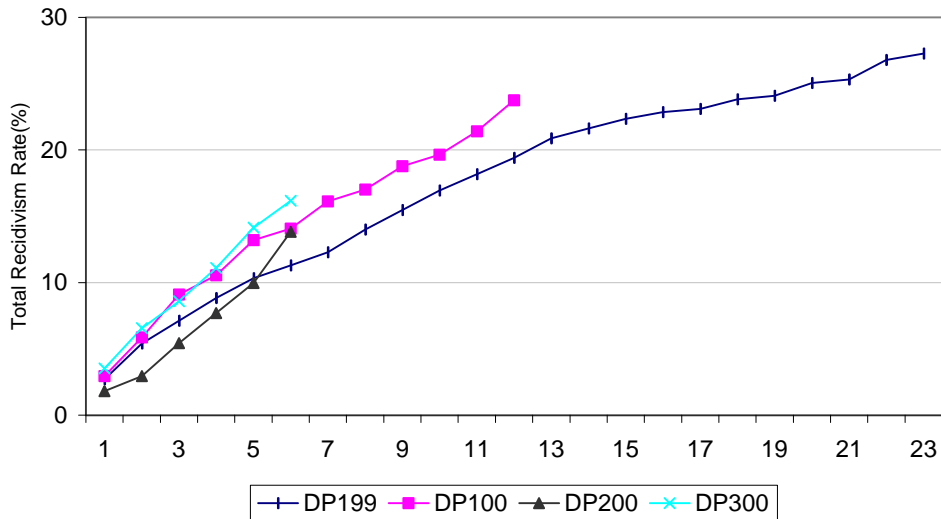
This measure tracks juveniles who are diverted from formal court action to the Juvenile Department Deferred Prosecution program. The program offers a wide range of educational, therapeutic, and recreational services through Department programs and community service providers. Services or supervision are normally provided for four to six months.

**Offense profile of the samples:**

	<u>DP199</u>	<u>DP299</u>	<u>DP399</u>	<u>DP499</u>	<u>DP100</u>	<u>DP200</u>	<u>DP300</u>
Average # of del. prior offense:	1.13	1.19	1.40	1.28	1.17	1.24	1.23
Average # of felony prior offenses	0.05	0.07	0.08	0.09	0.05	0.04	0.07



**Cumulative Recidivism Rates by Months**

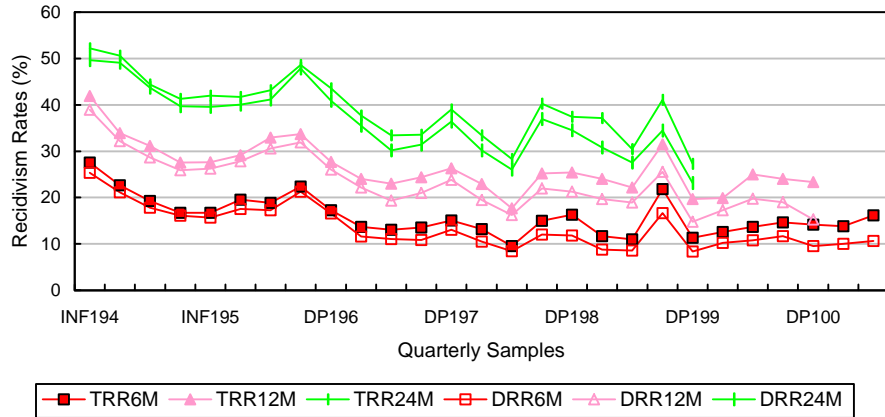


## DALLAS COUNTY JUVENILE DEPARTMENT RECIDIVISM TRACKING PROGRAM

SAMPLE	DEFERRED PROSECUTION	PAGE NO.	8.1
MEASURE	SUMMARY OF AVAILABLE DATA	DATE	09/30/01

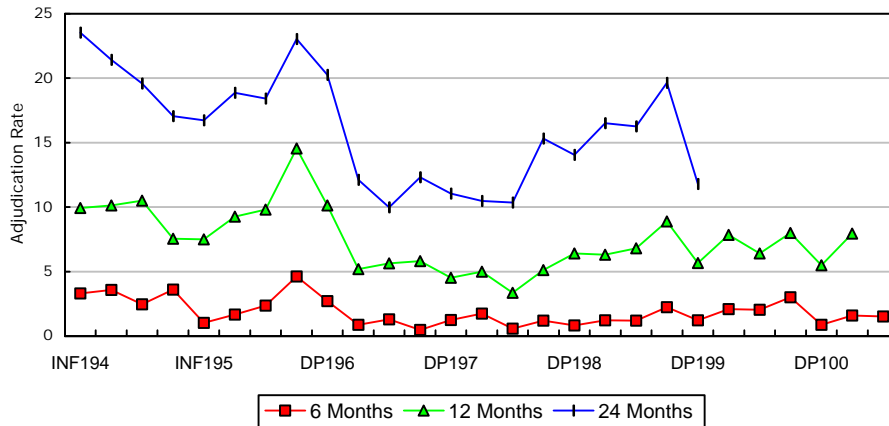
### Recidivism Rates

	Total Recidivism (%)			Delinquent Recidivism (%)		
	6 Months	12 Months	24 Months	6 Months	12 Months	24 Months
DP199	11.30	19.66	27.27	8.35	14.74	23.10
DP299	12.57	19.90		10.21	17.28	
DP399	13.66	25.00		10.76	19.77	
DP499	14.67	24.00		11.67	19.00	
DP100	14.12	23.34		9.51	15.27	
DP200	13.83			9.98		
DP300	16.16			10.60		



### Re-adjudication Rate\*

	6 Months	12 Months	24 Months
DP199	1.23	5.65	11.79
DP299	2.09	7.83	
DP399	2.03	6.40	
DP499	3.00	8.00	
DP100	0.88	5.57	
DP200	1.59	7.94	
DP300	1.52		



\*Limited to adjudications within the juvenile system.

**DALLAS COUNTY JUVENILE DEPARTMENT  
RECIDIVISM TRACKING PROGRAM**

<b>SAMPLE</b>	<b>DEFERRED PROSECUTION</b>	<b>PAGE NO.</b>	<b>8.2</b>
<b>MEASURE</b>	<b>DIVERTED DURING 1ST QUARTER OF 99</b>	<b>DATE</b>	<b>9/30/01</b>

DP199 Profile 24 Months after Diverted to Deferred Prosecution

Sample Size: 407	<u>Adjudication Rate</u>				Total RRR-6 Months	N	%
		N	%		Del. RRR-6 Months	46	11%
	6 Months:	5	1%		Total RRR-12 Months	80	20%
	12 Months:	23	6%		Del. RRR-12 Months	60	15%
	24 Months:	48	12%		Total RRR-24 Months	111	27%
				Del. RRR-24 Months	94	23%	

	<u>Profile</u>		<u>Total RRR</u>		<u>Del. RRR</u>		<u>Total RRR</u>		<u>Del. RRR</u>		<u>Total RRR</u>		<u>Del. RRR</u>	
	N	% of Total	6 Months		12 Months		24 Months							
<u>Gender</u>			N	%	N	%	N	%	N	%	N	%	N	%
Male	280	69%	33	12%	26	9%	62	22%	50	18%	87	31%	79	28%
Female	127	31%	13	10%	8	6%	18	14%	10	8%	24	19%	15	12%
<u>Race</u>														
Black	115	28%	18	16%	13	11%	29	25%	22	19%	39	34%	35	30%
Hispanic	134	33%	14	10%	10	7%	24	18%	18	13%	37	28%	31	23%
White	146	36%	14	10%	11	8%	25	17%	18	12%	31	21%	25	17%
Other	12	3%	0		0		2	17%	2	17%	4	33%	3	25%
<u>Age When Diverted</u>														
10-13	89	22%	8	9%	5	6%	12	13%	7	8%	23	26%	18	20%
14-15	164	40%	19	12%	15	9%	39	24%	29	18%	55	34%	49	30%
16 and Over	154	38%	19	12%	14	9%	29	19%	24	16%	33	21%	27	18%
<u>Age, 1st Referral</u>														
10-13	116	29%	16	14%	10	9%	25	22%	17	15%	40	34%	33	28%
14-15	173	43%	18	10%	16	9%	36	21%	27	16%	50	29%	43	25%
16 and Over	118	29%	12	10%	8	7%	19	16%	16	14%	21	18%	18	15%
<u>Child Lives With</u>														
Both	75	18%	9	12%	8	11%	17	23%	13	17%	23	31%	20	27%
Father	56	14%	4	7%	2	4%	7	13%	5	9%	9	16%	7	13%
Mother	183	45%	16	9%	12	7%	27	15%	20	11%	41	22%	35	19%
Other	93	23%	17	18%	12	13%	29	31%	22	24%	38	41%	32	34%
<u>Months from 1st Ref.</u>														
Under 6 Months:	357	88%	29	8%	22	6%	59	17%	44	12%	85	24%	72	20%
6-12 Months	14	3%	4	29%	3	21%	5	36%	4	29%	6	43%	5	36%
1-2 Years	14	3%	5	36%	4	29%	6	43%	5	36%	6	43%	5	36%
Over 2 Years	22	5%	8	36%	5	23%	10	45%	7	32%	14	64%	12	55%
<u>Prior Felony Offenses</u>														
No	384	94%	41	11%	30	8%	72	19%	55	14%	101	26%	84	22%
Yes	23	6%	5	22%	4	17%	8	35%	5	22%	10	43%	10	43%

\*Length of time from youth's first referral to current disposition

**DALLAS COUNTY JUVENILE DEPARTMENT  
RECIDIVISM TRACKING PROGRAM**

<b>SAMPLE</b>	<b>DEFERRED PROSECUTION</b>	<b>PAGE NO.</b>	<b>8.3</b>
<b>MEASURE</b>	<b>DIVERTED DURING 1ST QUARTER OF 2000</b>	<b>DATE</b>	<b>9/30/01</b>

DP100 Profile 12 Months after Diverted to Deferred Prosecution

Sample Size: 347	<u>Adjudication Rate</u>				Total RRR-6 Months	N	%
			N	%	Del. RRR-6 Months	49	14%
	6 Months:	3	1%	Total RRR-12 Months	33	10%	
	12 Months:	19	5%	Del. RRR-12 Months	81	23%	
	24 Months:			Total RRR-24 Months	53	15%	
				Del. RRR-24 Months			

Profile	Total RRR		Del. RRR		Total RRR		Del. RRR		Total RRR		Del. RRR	
	% of		6 Months		12 Months		24 Months					
	N	Total	N	%	N	%	N	%	N	%	N	%
<b>Gender</b>												
Male	228	66%	34	15%	26	11%	57	25%	42	18%		
Female	119	34%	15	13%	7	6%	24	20%	11	9%		
<b>Race</b>												
Black	117	34%	21	18%	16	14%	28	24%	20	17%		
Hispanic	100	29%	12	12%	6	6%	24	24%	13	13%		
White	123	35%	15	12%	10	8%	28	23%	19	15%		
Other	7	2%	1	14%	1	14%	1	14%	1	14%		
<b>Age When Diverted</b>												
10-13	77	22%	13	17%	9	12%	21	27%	16	21%		
14-15	143	41%	25	17%	18	13%	45	31%	30	21%		
16 and Over	127	37%	11	9%	6	5%	15	12%	7	6%		
<b>Age, 1st Referral</b>												
10-13	102	29%	20	20%	13	13%	31	30%	22	22%		
14-15	148	43%	25	17%	18	12%	43	29%	28	19%		
16 and Over	97	28%	4	4%	2	2%	7	7%	3	3%		
<b>Child Lives With</b>												
Both	55	16%	7	13%	5	9%	16	29%	8	15%		
Father	49	14%	6	12%	4	8%	8	16%	5	10%		
Mother	193	56%	22	11%	13	7%	38	20%	23	12%		
Other	50	14%	14	28%	11	22%	19	38%	17	34%		
<b>Months from 1st Ref.</b>												
Under 6 Months:	293	84%	39	13%	27	9%	66	23%	45	15%		
6-12 Months	14	4%	1	7%	1	7%	3	21%	2	14%		
1-2 Years	16	5%	3	19%	1	6%	5	31%	1	6%		
Over 2 Years	24	7%	6	25%	4	17%	7	29%	5	21%		
<b>Prior Felony Offenses</b>												
No	334	96%	47	14%	32	10%	79	24%	52	16%		
Yes	13	4%	2	15%	1	8%	2	15%	1	8%		

\*Length of time from youth's first referral to current disposition



**DALLAS COUNTY JUVENILE DEPARTMENT  
RECIDIVISM TRACKING PROGRAM**

<b>SAMPLE</b>	<b>DEFERRED PROSECUTION</b>	<b>PAGE NO.</b>	<b>8.4</b>
<b>MEASURE</b>	<b>DIVERTED DURING 3RD QUARTER OF 2000</b>	<b>DATE</b>	<b>9/30/01</b>

DP300 Profile 6 Months after Diverted to Deferred Prosecution

Sample Size: 396	<u>Adjudication Rate</u>				Total RRR-6 Months	N	%		
			N	%	Del. RRR-6 Months	64	16%		
	6 Months:		6	2%	Total RRR-12 Months				
	12 Months:				Del. RRR-12 Months			42	11%
	24 Months:				Total RRR-24 Months				
				Del. RRR-24 Months					

	<u>Profile</u>		<u>Total RRR</u>		<u>Del. RRR</u>		<u>Total RRR</u>		<u>Del. RRR</u>		<u>Total RRR</u>		<u>Del. RRR</u>	
	N	% of Total	6 Months		6 Months		12 Months		12 Months		24 Months		24 Months	
<u>Gender</u>			N	%	N	%	N	%	N	%	N	%	N	%
Male	258	65%	49	19%	34	13%								
Female	138	35%	15	11%	8	6%								
<u>Race</u>														
Black	120	30%	22	18%	17	14%								
Hispanic	120	30%	25	21%	16	13%								
White	149	38%	15	10%	8	5%								
Other	7	2%	2	29%	1	14%								
<u>Age When Diverted</u>														
10-13	72	18%	9	13%	4	6%								
14-15	165	42%	37	22%	25	15%								
16 and Over	159	40%	18	11%	13	8%								
<u>Age, 1st Referral</u>														
10-13	92	23%	15	16%	8	9%								
14-15	185	47%	37	20%	26	14%								
16 and Over	119	30%	12	10%	8	7%								
<u>Child Lives With</u>														
Both	78	20%	14	18%	9	12%								
Father	53	13%	7	13%	5	9%								
Mother	180	45%	29	16%	17	9%								
Other	85	21%	14	16%	11	13%								
<u>Months from 1st Ref.</u>														
Under 6 Months	332	84%	48	14%	33	10%								
6-12 Months	26	7%	7	27%	4	15%								
1-2 Years	24	6%	5	21%	2	8%								
Over 2 Years	14	4%	4	29%	3	21%								
<u>Prior Felony Offenses</u>														
No	368	93%	61	17%	39	11%								
Yes	28	7%	3	11%	3	11%								

\*Length of time from youth's first referral to current disposition

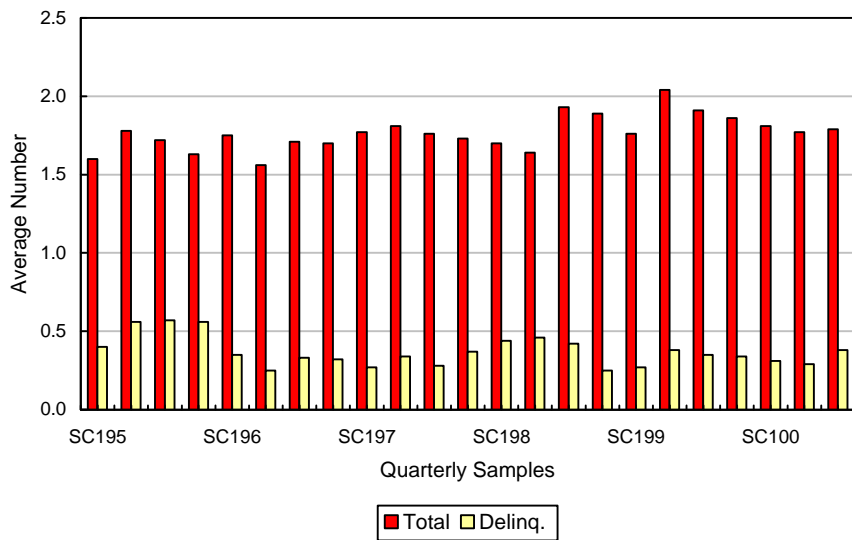
## DALLAS COUNTY JUVENILE DEPARTMENT RECIDIVISM TRACKING PROGRAM

SAMPLE	SUPERVISORY CAUTION	PAGE NO.:	9.0
MEASURE	NARRATIVE AND INDEX TO DATA	DATE	09/30/01

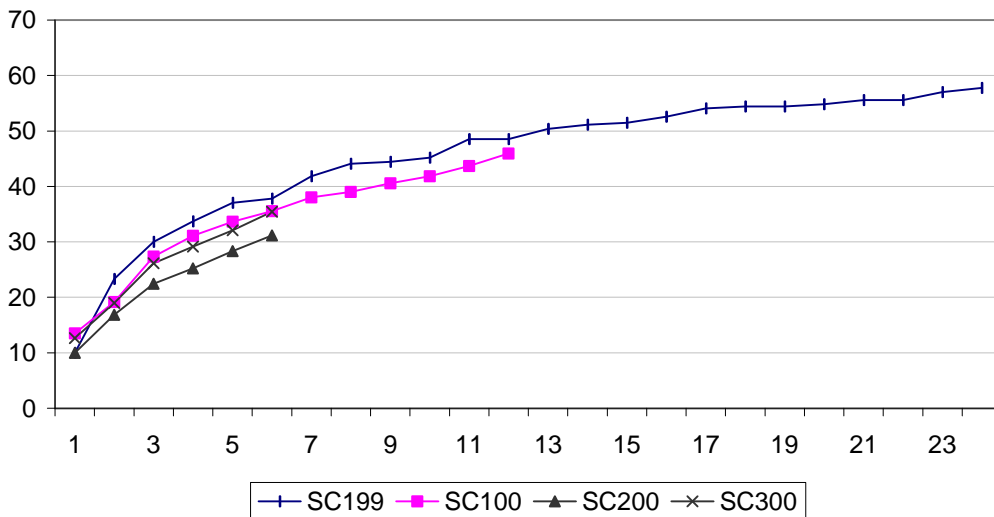
This measure tracks juveniles who are diverted from formal court action to the Juvenile Department Supervisory Caution program. Youths under this program are mostly referred for CIN offenses such as runaway and truancy, or more serious offense with mitigating circumstances. Counseling services, short-term non-residential or outpatient based, are provided as early intervention measures.

**Offense profile of the samples:**

	SC199	SC299	SC399	SC499	SC100	SC200	SC300
Average # of all prior referrals:	1.76	2.04	1.91	1.86	1.81	1.77	1.79
Average # of delinq. prior referra	0.27	0.38	0.35	0.34	0.31	0.29	0.38



**Cumulative Recidivism Rates by Months**

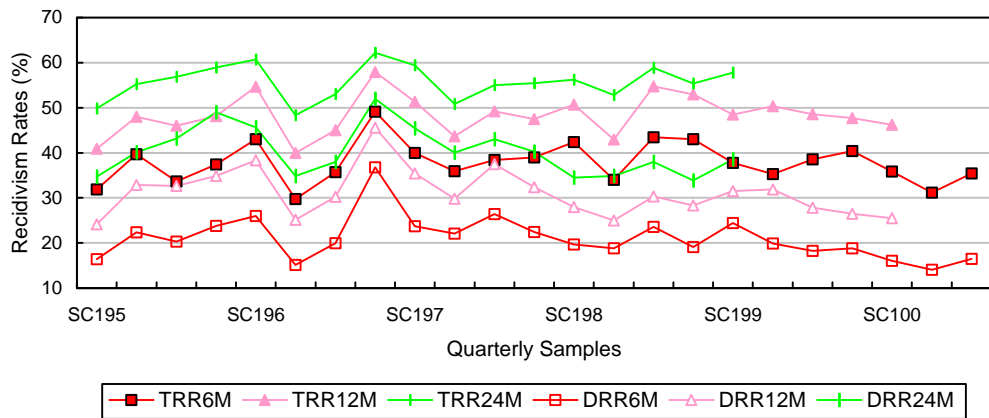


## DALLAS COUNTY JUVENILE DEPARTMENT RECIDIVISM TRACKING PROGRAM

SAMPLE	SUPERVISORY CAUTION	PAGE NO.	9.1
MEASURE	SUMMARY OF AVAILABLE DATA	DATE	09/30/01

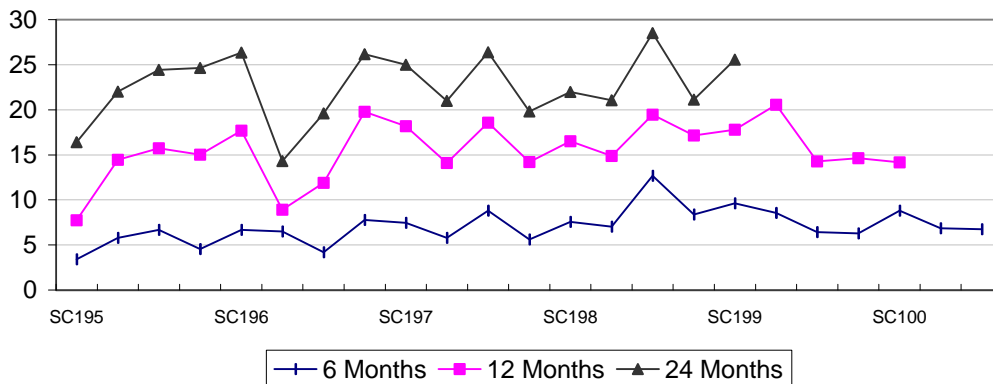
**Recidivism Rates**

	Total Recidivism (%)			Delinquent Recidivism (%)		
	6 Months	12 Months	24 Months	6 Months	12 Months	24 Months
SC199	37.78	48.52	57.78	24.44	31.48	38.52
SC299	35.27	50.34		19.86	31.85	
SC399	38.57	48.57		18.21	27.86	
SC499	40.42	47.74		18.82	26.48	
SC100	35.85	46.23		16.04	25.47	
SC200	31.15			14.02		
SC300	35.44			16.45		



**Re-adjudication Rate\***

	6 Months	12 Months	24 Months
SC199	9.63	17.78	25.56
SC299	8.56	20.55	
SC399	6.43	14.29	
SC499	6.27	14.63	
SC100	8.81	14.15	
SC200	6.85		
SC300	6.75		



\*Limited to adjudications within the juvenile system.

**DALLAS COUNTY JUVENILE DEPARTMENT  
RECIDIVISM TRACKING PROGRAM**

<b>SAMPLE</b>	<b>SUPERVISORY CAUTION</b>	<b>PAGE NO.</b>	<b>9.2</b>
<b>MEASURE</b>	<b>DIVERTED DURING 1ST QUARTER OF 99</b>	<b>DATE</b>	<b>09/30/01</b>

SC199 Profile 24 Months after Supervisory Caution

Sample Size:	270	<u>Adjudication Rate</u>		Total RRR-6 Months		N	%
						102	38%
		6 Months:	26	10%	Del. RRR-6 Months	66	24%
		12 Months:	48	18%	Total RRR-12 Months	131	49%
		24 Months:	69	26%	Del. RRR-12 Months	85	31%
				Total RRR-24 Months	156	58%	
				Del. RRR-24 Months	104	39%	

Profile	Total RRR		Del. RRR		Total RRR		Del. RRR		Total RRR		Del. RRR			
	N	%	N	%	N	%	N	%	N	%	N	%		
<u>Female</u>	167	62%	51	31%	23	14%	71	43%	34	20%	85	51%	45	27%
Black	44	16%	16	36%	8	18%	22	50%	13	30%	27	61%	18	41%
Hispanic	59	22%	18	31%	5	8%	24	41%	9	15%	31	53%	13	22%
White	61	23%	16	26%	10	16%	24	39%	12	20%	26	43%	14	23%
Other	3	1%	1	33%	0	0%	1	33%	0	0%	1	33%	0	
<u>Male</u>	103	38%	51	50%	43	42%	60	58%	51	50%	71	69%	59	57%
Black	42	16%	19	45%	18	43%	22	52%	20	48%	28	67%	24	57%
Hispanic	21	8%	11	52%	9	43%	13	62%	12	57%	14	67%	13	62%
White	39	14%	20	51%	15	38%	24	62%	18	46%	28	72%	21	54%
Other	1	0%	1	100%	1	100%	1	100%	1	100%	1	100%	1	100%
<u>Age When Diverted</u>														
10-13	67	25%	28	42%	21	31%	37	55%	26	39%	49	73%	34	51%
14-15	135	50%	47	35%	24	18%	64	47%	36	27%	76	56%	46	34%
16 and Over	68	25%	27	40%	21	31%	30	44%	23	34%	31	46%	24	35%
<u>Age, 1st Referral</u>														
10-13	97	36%	39	40%	29	30%	50	52%	34	35%	64	66%	43	44%
14-15	112	41%	41	37%	21	19%	57	51%	34	30%	67	60%	43	38%
16 and Over	61	23%	22	36%	16	26%	24	39%	17	28%	25	41%	18	30%
<u>Child Lives With</u>														
Both	53	20%	19	36%	12	23%	25	47%	17	32%	29	55%	20	38%
Father	19	7%	6	32%	2	11%	11	58%	4	21%	13	68%	6	32%
Mother	106	39%	34	32%	20	19%	43	41%	25	24%	54	51%	29	27%
Other	92	34%	43	47%	32	35%	52	57%	39	42%	60	65%	49	53%
<u>Referral Offense</u>														
Runaway	219	81%	82	37%	54	25%	105	48%	67	31%	122	56%	81	37%
Other	51	19%	20	39%	12	24%	26	51%	18	35%	34	67%	23	45%
<u># of Prior Referrals</u>														
None	167	62%	57	34%	35	21%	72	43%	46	28%	89	53%	59	35%
1-2	78	29%	33	42%	22	28%	43	55%	28	36%	51	65%	33	42%
3 & Over	25	9%	12	48%	9	36%	16	64%	11	44%	16	64%	12	48%

**DALLAS COUNTY JUVENILE DEPARTMENT  
RECIDIVISM TRACKING PROGRAM**

SAMPLE	<b>SUPERVISORY CAUTION</b>	PAGE NO.	9.3
MEASURE	<b>DIVERTED DURING 1ST QUARTER OF 2000</b>	DATE	09/30/01

SC100 Profile 12 Months after Supervisory Caution

Sample Size:	318	<u>Adjudication Rate</u>		Total RRR-6 Months		N	%
						114	36%
		6 Months:	28	9%	Del. RRR-6 Months	51	16%
		12 Months:	45	14%	Total RRR-12 Months	147	46%
		24 Months:			Del. RRR-12 Months	81	25%
				Total RRR-24 Months			
				Del. RRR-24 Months			

	<u>Profile</u>		<u>Total RRR</u>		<u>Del. RRR</u>		<u>Total RRR</u>		<u>Del. RRR</u>		<u>Total RRR</u>		<u>Del. RRR</u>	
	N	% of Total	N	%	N	%	N	%	N	%	N	%	N	%
<u>Female</u>	213	67%	66	31%	25	12%	92	43%	48	23%				
Black	78	25%	29	37%	15	19%	38	49%	24	31%				
Hispanic	62	19%	15	24%	4	6%	28	45%	14	23%				
White	70	22%	21	30%	6	9%	25	36%	10	14%				
Other	3	1%	1	33%	0	0%	1	33%	0	0%				
<u>Male</u>	105	33%	48	46%	26	25%	55	52%	33	31%				
Black	32	10%	13	41%	7	22%	16	50%	10	31%				
Hispanic	19	6%	8	42%	4	21%	9	47%	5	26%				
White	54	17%	27	50%	15	28%	30	56%	18	33%				
Other	0	0%	0	0%	0	0%	0	0%	0	0%				
<u>Age When Diverted</u>														
10-13	67	21%	26	39%	9	13%	35	52%	18	27%				
14-15	161	51%	61	38%	28	17%	82	51%	47	29%				
16 and Over	90	28%	27	30%	14	16%	30	33%	16	18%				
<u>Age, 1st Referral</u>														
10-13	109	34%	42	39%	21	19%	61	56%	37	34%				
14-15	152	48%	58	38%	27	18%	70	46%	39	26%				
16 and Over	57	18%	14	25%	3	5%	16	28%	5	9%				
<u>Child Lives With</u>														
Both	59	19%	19	32%	4	7%	25	42%	10	17%				
Father	24	8%	7	29%	1	4%	7	29%	1	4%				
Mother	123	39%	40	33%	15	12%	61	50%	31	25%				
Other	112	35%	48	43%	31	28%	54	48%	39	35%				
<u>Referral Offense</u>														
Runaway	219	69%	81	37%	32	15%	106	48%	54	25%				
Other	99	31%	33	33%	19	19%	41	41%	27	27%				
<u># of Prior Referrals</u>														
None	191	60%	62	32%	21	11%	76	40%	33	17%				
1-2	99	31%	37	37%	21	21%	52	53%	35	35%				
3 & Over	28	9%	15	54%	9	32%	19	68%	13	46%				

