



**Dallas County Criminal Justice Advisory Board
Meeting Agenda**

June 18, 2018, 2:30 p.m.

Dallas County Health & Human Services Bldg., Room 627-A
2377 N. Stemmons Freeway
Dallas, TX 75207

- I. Welcome and Introductions** – The Honorable Elba Garcia, Chair, CJAB
- II. Membership & Infrastructure**— Ellyce Lindberg Co-Chair, CJAB
- III. Minutes Review/Approval*** – Ellyce Lindberg Co-Chair, CJAB
- IV. Presentations**
 - **Strategies in Partnering and Prosecuting Elder Abuse**—Stephanie Martin
 - **Guidance for Emergency Detentions**—Matt Roberts & Courtney Clemmons
- V. Committee Project Updates**
 - **Bail Bond Committee** –Miguel Canales
 - **Fair Defense Committee** – Lynn Richardson
 - **Jail Population/Pre-Trial Diversion** – Etho Pugh
 - **Justice of the Peace** - Judge Steve Seider
 - **Juvenile Justice** – Mike Griffiths
 - **Law Enforcement/Jurisprudence** – Chief Jim Spivey, Ellyce Lindberg
 - **Reentry Committee** – Christina Crain
- VI. Program Update**
 - **SAMHSA Drug Court Expansion**—Laura Edmonds
 - **Caruth Smart Justice**—Mike Laughlin
 - **Local Data Advisory Board**—Miguel Canales
- VII. Public Comments**
- VIII. Announcements**
- IX. Next Meeting Schedule**
 - September 17, 2018



**Dallas County Criminal Justice Advisory Board
General Membership Minutes for Monday, March 26, 2018**

Welcome & Introductions, Commissioner Dr. Garcia, called the meeting to order at 2:30 PM. Customary introductions were made by all in attendance.

Membership & Infrastructure:

There were no changes to membership or infrastructure at this time.

Meeting Minutes:

The minutes from the CJAB General Membership meeting held on December 18, 2017, were made a part of the packet. There was a motion made to accept the minutes as printed. The motion was seconded and approved.

Presentations:

Homeless Release Phone Grant – Dr. Jennifer Reingle-Gonzalez

Commissioner Garcia introduced Dr. Jennifer Reingle-Gonzalez.

Dr. Reingle-Gonzalez began the presentation by introducing the project Link 2 Care and the partners associated with the launch of the project. The purpose of the project is to provide cell phones to the homeless population in order to link them to services in the community in an effort to help reduce jail population and get them out of homelessness and into stable housing. This would be accomplished through a smart phone app that would link them to services. In order to determine if the project is successful, a 5 year study will be conducted.

The study is currently in year one. They will be recruiting a total of 432 homeless men and women who have been released from Dallas County jail to participate in the study over the 5 year study. Upon release from Dallas County jail, a homeless person will be redirected to The Bridge where they will enroll in the program at an average of 20 people per month. Each participant will be followed for 6 months and recidivism data will be collected. Participants will get paid \$510 dollars if they participate and complete the 6 month study. The app will ask the participants questions about their daily activities and record the data. The app will link participants to their case managers, and AA/NA meetings by a click of a button.

Dr. Reingle-Gonzalez stated that a flyer has been created, and she has been in touch with Pretrial Services in order to help with recruiting. She also stated she would like to have contact with anyone that works with the homeless population in order to help with recruiting participants.

In order to participate in the study, all participants must have gotten released from jail within the last 30 days prior to referral. They have to reside in Dallas for the next year, and must enroll in the Bridge Homeless Recovery Program.

During the question and answer session Dr. Reingle-Gonzalez was asked if there is a specific strategy for making sure participants keep their cellphones charged. Dr. Reingle-Gonzalez stated they have done a study before and keeping cellphones charged has never been a problem. The Bridge has plenty of outlets for participants to use.

Commissioner Garcia asked if Dr. Reingle-Gonzalez can send progress reports through CJAB.

Homeless Diversion Court Program – District Attorney’s Office

Commissioner Garcia introduced speakers from the District Attorney’s Office Felicia Kerney, Julie Turnbull and Lyndi Brooks and gave a brief biography.

Julie Turnbull began the presentation introducing the Reformatory Justice Unit and explaining the specialty courts and diversion programs the District Attorney’s office is involved with.

The unit is composed of 5 prosecutors, 1 investigator and 6 volunteer prosecutors from different divisions. It was explained that part of the unit is funded by MEMO funds, which are funds collected from the conditional dismissal fees. These monies are used to fund 3 additional probation officer position salaries as well.

Mrs. Turnbull gave a brief history of the specialty courts and their function. Defendants that qualify are pulled out of the criminal justice system and into specialty courts. Defendants do random drug testing and meeting with the judges on a weekly basis. If defendants do well they are rewarded by getting their cases dismissed and immediate expunction. If they are unsuccessful they are referred back to the criminal justice system for case management. Mrs. Turnbull referred to the packet for a list of the different specialty courts. Mrs. Turnbull finished off by saying her unit sponsors two classes HOPE and STOP. These classes are for individuals who are on probation or in a specialty court and classes are specifically for prostitutes and their clients (“Johns”).

Mrs. Brooks began her presentation by giving a brief history how the Homeless Diversion Court (HDC) started in Dallas County. The program is voluntary and

not ordered by the courts. Defendants are referred by service providers after they have been working with a service provider for a minimum of 30 days. The DA's office will review the defendant's criminal history and the progress in current program. They will then use that information to make a determination if the defendants are eligible for HDC. Upon successful completion of the program the defendant's case will be dismissed.

During question and answer session it was asked what kind of cases will they typically have. Mrs. Brooks stated mostly misdemeanors, violent offenses will be considered case by case, and no felonies at this time.

Commissioner Garcia asked how many people will they be able to divert. Mrs. Brooks responded they currently have 25 names submitted to them, for screening. Commissioner Garcia asked if families would also be considered for the program. It was stated that they are currently only looking at the individual and not servicing families. Commissioner Garcia requested Mrs. Brooks report back with a progress report in 6 months.

Mrs. Kerney began her presentation by giving a brief history of how the DA satellites offices began. There are currently 14 satellite offices for victims of domestic violence to be prescreened for a protective order. These offices are located at Police Substations, Family Advocacy Centers and Genesis Shelter. The purpose of these offices is to make it easier for victims to get to access to a prosecutor and advocates in the community. Victims are prescreened at the satellites offices and if they qualify for a protective order they would have to complete the process at the Frank Crowley Courts Building. Mrs. Kerney ended the presentation by stating that as of this date there have been over 350 individuals who have been served.

Committee Project Updates:

Bail Bond:

Jeff Segura gave the update. The Bond Forfeiture Judgment Report reflected judgment totals from year completed 2017 of \$2,391,037.77 for 2598 cases. The Account 62 reports reflected total bond forfeiture collected by the felony courts in February 2018 was \$116,180.00. For the same reporting period, the misdemeanor courts collected \$17,321.00.

Fair Defense Committee:

Lynn Richardson could not attend the meeting but sent an update to Mike Laughlin. It was reported that they are currently working on establishing a 24 hour magistrate process. They have put together an official proposal for staffing in order to handle the extended hours.

Jail Population Update:

Etho Pugh reported on the Jail Population meeting held on March 16, 2018. Excerpts from that meeting can be found on pages 45 through 50 of the packet. Mr. Pugh stated that the jail population for this date is 4,936. It was further reported that there was a technical issue with AIS over the weekend. It was causing delays on bonding companies being able to process their bonds. Mr. Victrum reported that the technical issue was corrected by IT today.

Justice of the Peace:

Judge Steve Seider could not attend the meeting but sent an update to Mike Laughlin. Justice Courts had been made aware of request for a waiver or exemption from the Office of Court Administration on collections reporting requirements. This is due to the antiquated Case Management System. He will be working with Dallas County Administration to solve and satisfy the requirements as they have done in the past. Secondly, the Dallas County DA's office has inquired about the Homeless Court, which Judge Seider has been having for 17 years in conjunction with the DAYL and the Stewpot. They have been included as a potential partner in the development of a homeless court for higher level cases. Thirdly, the first test of the software/hardware as a portal for the mental illness treatment that originates from JP court was successful. They are now going through response protocols and common scenarios to use with customers in the upcoming weeks. Lastly, software development of the new case management system is being supplemented with input from various Justice Court Chief Clerks, and the process is moving very slow.

Juvenile Justice:

Mr. Acosta could not attend the meeting but sent an update to Jeff Segura. It was reported that the Juvenile Department is currently in the process of selecting a new Chief/Director.

Law Enforcement/Jurisprudence:

A meeting was held February 28, 2018, and the meeting minutes are in the packets on pages 51-55. Ellyce Lindberg stated that they are currently trying to get a process where the law enforcement agencies brings the Probable Cause Affidavit to the jail when they have a warrant to drop off, or when they bring a prisoner. This would help the magistrate make an appropriate bond determination.

Ellyce Lindberg gave an update on Cite and Release, and stated there have been two dockets so far, and half the defendants did not show up. Those that did show were appreciative that they were not arrested initially. Commissioner Garcia asked if overall the program working efficiently. Mrs. Lindberg stated that the program is working well and the people assigned to the project are doing a great job. It was also stated that not all LEA are participating at the moment, but Dallas County infrastructure is setup for any other LEA that wants to start participating.

Research:

Dr. Jon Maskaly could not attend the meeting and did not send an update.

Reentry:

Dr. Crain started by giving a brief history of the Unlocking Doors program. Dr. Crain stated the DOJ and the White House has recognized Unlocking Doors, and will involve them in a research project on reentry. The DOJ plans to spend 4 million dollars on a reentry research study that is to be conducted in 4 different states. Texas has been selected as one of the states and Unlocking Doors program has been asked to participate and help roll out the study through their platform. At the end of the study a white paper will be written and published with the goals of implementing their findings and practices in other localities. Dr. Crain stated she would continue to provide updates as the research study starts to roll out.

The annual Reentry Symposium is scheduled for October 19, 2018 at the Belo Mansion.

Dr. Crain stated they are working with Parkland Hospital and PCCI, to build an algorithm on top of the Unlocking Door model in order to help sync and automate services for offenders. The goal of program is to collaborate and put an offender in all the programs he/she needs like, mental health, health care and homelessness which ultimately will save tax payer dollars. Dr. Crain stated that they have also partnered with another group called RefillWise in order to sign up offenders with a prescription card.

Dr. Crain stated that they have received a grant through NIH to do a research project on offenders exiting Dallas County jail who have AIDS/HIV. There will be control and focus groups, Unlocking Doors will call members of the focus group to remind them to go in for their medication.

Lastly, Dr. Crain stated that after speaking with a couple of LEA Chief's they will be starting a pilot project, where LEA will be referring offenders directly to Unlocking Doors. The purpose of this is to free up resources for the LEA.

Program Update:**SAMSHA Drug Court Expansion:**

Laura Edmonds gave an update; the yearly goal for SAMSHA is 36 and they have had 17 referrals through the end of February. They have been able to move clients from referral to out of jail within an average of 8 days. Commissioner Garcia asked what the target time is. Mrs. Edmonds stated the grant goal is to be under 14 days.

Caruth Smart Justice:

Mike Laughlin stated to refer to pages 57-64 for a quarterly summary from Meadows. It was further stated that Intercept 1 is doing well, and working closely with Dallas Police, Fire/Rescue, and Parkland. DPD Chief stated that on January 29, 2018 they started the project, and it's working well. The 911 dispatchers are able have clinicians respond to the scene; it frees up 2 to 3 officers. Mr. Laughlin stated that Intercept 2-4 continues to be in progress. They have had to make some tweaks in order to accommodate the revision to the statues; they will now be able to include more people therefore their numbers will improve. Mrs. Edmonds stated that Intercept 5 is currently working well. Commissioner Garcia asked if we will be tracking the cost. Mr. Laughlin stated yes that is part of the long term plan.

Public Comments:

None

Announcements:

The next CJAB meeting will be held on June 18, 2018, at 2:30pm.

Adjournment:

A motion was made to adjourn the meeting; it was seconded and approved at 4:00PM.

Stephanie Martin

Stephanie graduated from Angelo State University in 1998 with a Bachelor of Science degree and then attended Texas Tech University School of Law where she completed her Juris Doctorate in 2001. Once licensed to practice law, Stephanie joined the Dallas County District Attorney's Office. Stephanie left the DA's Office to practice civil law for three years but came back to the Dallas County District Attorney's Office in 2007 where she has been ever since. While at the DA's Office, she has been assigned to the Specialized Crime and Child Abuse Divisions and has supervised prosecutors in the Misdemeanor Division, the Criminal District Court #5 and the 195th Judicial District Court. Stephanie is currently a Deputy Chief of the Elder Abuse and Exploitation Unit of the Specialized Crime Division. The Elder Abuse and Exploitation Unit was established in May, 2014, as part of the Elder Financial Safety Center, a public safety project made possible by the W.W. Caruth, Jr. Foundation at Communities Foundation of Texas.

INVESTIGATING AND PROSECUTING CASES OF ELDER ABUSE

Stephanie Martin
Alexis Goldate
Michael Hunsucker

Elder Abuse Unit
Specialized Crime Division
Dallas County District Attorney's Office

This training is made possible with funding by the W. W. Caruth, Jr. Foundation at the
Communities Foundation of Texas

Acknowledgements

- The module on Physical Abuse and Neglect is taken largely in part from materials provided through a grant from US Department of Justice Office on Violence Against Women <http://www.usdoj.gov/ovw>
- The module on financial abuse is provided by the Elder Financial Safety Center, a public safety project, a public safety project made possible with funding by the W.W. Caruth, Jr. Foundation at the Communities Foundation of Texas

Elder Financial Safety Center

Comprehensive Services Snapshot

The Senior Source *PREVENTION*

- Financial Counseling
- Benefits Counseling & Assistance
- Insurance Counseling
- Money Management
- Employment Services
- Debt Management/CCCS
- Fraud Advocacy & Education

Probate Courts *PROTECTION*

- Guardianship Investigation & Placement
- Annual Monitoring for All Wards
- Removal of Unfit Guardians

District Attorney's Office *PROSECUTION*

- Investigation
- Prosecution
- Training & Education for Law Enforcement on Financial Crimes

Training Objectives

- Identify the dynamics of elder abuse
- Define target population of victims & perpetrators in elder abuse cases
- Recognize elder abuse crimes occur in a variety of forms and identify possible statutes/offenses to charge related to each
- Conduct effective elder abuse investigations

Aging in the US

- By 2030, 70 million seniors, more than twice the number in 1990
- In 2000, elderly were 13% of population, in 2030, elderly will be 20%
- By 2030 there will be more persons over 65 than under the age of 18

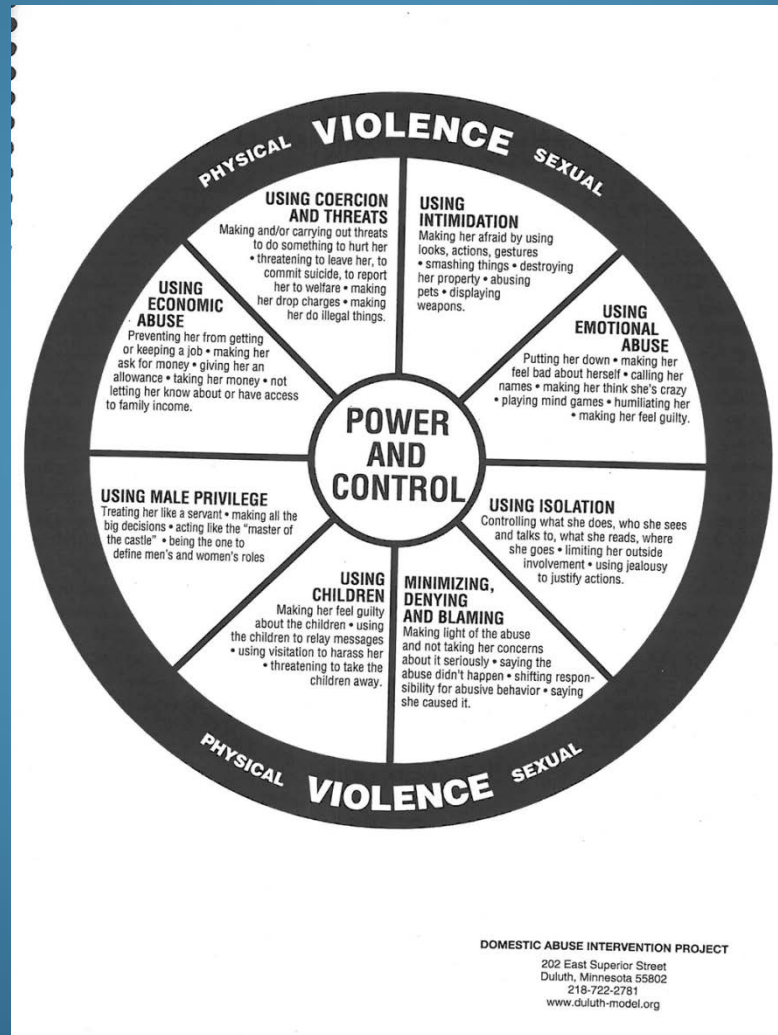
What is Elder Abuse?

- When an older adult experiences:
 - Physical, sexual or emotional abuse
 - Neglect
 - Financial Exploitation

Training Encompasses

- Victims
- Perpetrators
- Reasons for Abuse
- Similarities to Family Violence
- Effect of Crime on Elderly Victims

Family Violence Power and Control Wheel



Abuse in Later Life Wheel



Created by the National Clearinghouse on Abuse in Later Life (NCALL), a project of the Wisconsin Coalition Against Domestic Violence (WCADV),
307 S. Paterson St., Suite 1, Madison, WI 53703(608) 255-0539 , www.ncall.us/www.wcadv.org
This diagram adapted from the Power and Control/Equality wheels developed by the
Domestic Abuse Intervention Project, Duluth, MN

Training Encompasses

- Justifications and Excuses for Abuse
- Why it perpetuates
- Medical Issues that can complicate investigations

Training Encompasses

- Physical Abuse
 - Unique Types of Overt Abuse
 - Neglect/Omission Abuse
- Indicators of Physical Abuse re
 - Victim
 - Defendant
 - Environmental
- Specific Penal Code Statutes for Physical Abuse with Case Studies

Example of Case Study

Willie Mae's Story

- 85 years old
- Lived in first and only house ever bought
- Widowed since 2000
- Worked in dry cleaning/laundry until she retired at 65 years old
- Member of same church since 1974
- Granddaughter Michele moved in a year prior to help take care of her

Willie Mae's Story

- Stopped coming to church
- Utilities not being paid
- Turning away visitors
- APS initiated emergency removal proceedings after 3rd unsuccessful attempt to make contact with her







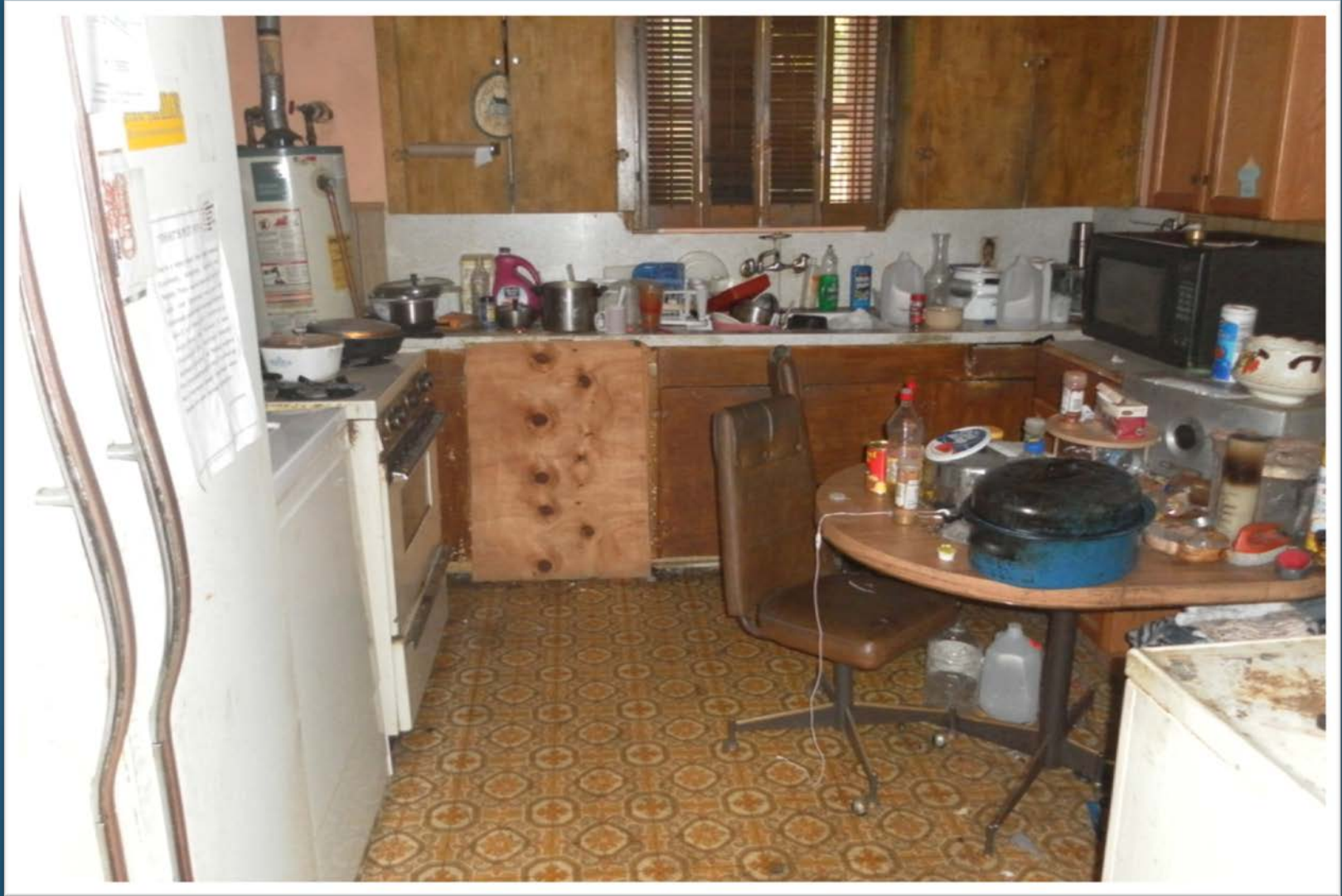












What else we found

- \$1400 month in Social Security
- Only dealt in checks; never had a debit or credit card before this
- POA signed
- Will executed leaving everything to Michele
- Multiple debts run up



3301 W. Royal Lane
Irving, TX 75063-6014

RETURN SERVICE REQUESTED

Letter Date: 04-19-13
Account #: [REDACTED]
Past Due Balance: \$ 408.52
Total Balance: \$ 670.23

Letter Date: 04-19-13

Account #: [REDACTED]

Past Due Balance: \$ 408.52

Total Balance: \$ 670.23

- **Online:** www.timewarnercable.com and log into MyServices to process a payment.
- **By Phone:** make a payment free of charge 24x7 using our automated payment option at 888-892-2253. Live agents are also available to assist with making a payment for a fee.
- **In Person or by Mail:** see a list of local payment center locations at www.timewarnercable.com in MyServices under the 'Ways to Pay Your Bill' section.
- **Smart Phone App:** Download the MyTWC App for Android on Google Play or for your iOS device from iTunes.

Non-payment of any portion of your service bill may result in disconnection of services. If disconnection occurs you will be required to pay the balance, a reconnect charge, one month of service in advance and you may be subject to a deposit. An unreturned equipment fee may be charged if leased equipment is not returned.

We appreciate your attention to this matter and look forward to resolving the past due balance. If payment has been made we thank you and ask that you please disregard this notice.

AVISO IMPORTANTE: CUENTA ATRAZADA

A partir de la fecha de este aviso, nuestros registros indican que su cuenta esta vencida. Un pago minimo de \$ 408.52 debe ser recibido en nuestras oficinas a las 5:00pm el 28 de abril de 2013 para evitar la interrupcion del servicio y posiblemente cargos adicionales.

Favor de remitir su pago inmediatamente:

- **Puede pagar Online:** www.timewarnercable.com y seleccione MyServices.
- **Por telefono:** puede hacer su pago 24x7 sin cargos adicionales usando nuestro sistema automatico telefono 888-892-2253. Si prefiere puede hacer su pago con uno de nuestros agentes.
- **Puede pagar en persona o por correo:** puede encontrar la lista de centros para pagar en www.timewarnercable.com escoja MyServices y seleccione 'Ways to Pay Your Bill'
- **Smart Phone App:** descarga la aplicacion de My TWC App para Android en Google Play o por tu iOS device desde iTunes.

Falta de pago de cualquier porcion de su factura podria resultar en la desconexion de sus servicios. Si su servicio es desconectado por falta de pago, para reconectar el servicio requerimos el pago completo de su cuenta, un mes de adelantado, cargos de reconexion y deposito. Cargos por el precio del equipo sera aplicado a su cuenta si no devuelve el equipo.

Apreciamos su atencion inmediata a este mensaje y esperamos recibir su pago pronto. Si ya hizo su pago, le damos las gracias y por favor ignore este aviso.



WILLIE MAE PERRAQUEZ
1310 E OVERTON RD
DALLAS, TX 75216-5423

August 13, 2013

Dear WILLIE MAE PERRAQUEZ

As you know, your AT&T U-verse® services have been temporarily disconnected. However, the service is still reserved for you.

The total amount due is **\$576.25**.

restoral charge of \$30 per U-verse product and/or service on your account (i.e. TV, Voice, and High Speed Internet) may apply.

If you would like to make a payment electronically today, you can do so by going online at www.att.com/bill. You can also use our Interactive Voice Response system by calling 1-800-288-2020. You will need the following items to use the system- your 10-digit phone number listed on your U-verse account and U-verse pass code. To pay your bill, simply say, "pay bill" and confirm you are calling about your U-verse account. To find a payment location near you, log into www.att.com/bill, select Account, then Payments, then Ways to Pay.

After September 03, 2013, services will be permanently disconnected and installation charges may apply to reconnect service. Upon disconnection, you will receive a letter to return your leased equipment to an authorized UPS Store. There will be a \$150 charge for each piece of equipment not returned within 21 days of disconnect. If you have purchased equipment, there is nothing to return and no charges will apply.

Thank you for choosing AT&T. We value you as a customer. If you have any questions you may

7796.2.46.15377 1 AT 0 384 LG



WILLIE MAE PERRAQUEZ
1310 E OVERTON RD
DALLAS TX 75216-5423



Utilities
And
Services

City of Dallas

Customer Name:

Account Number:

Amount Due by 8/27/13 \$362.71
Amount Due after 8/27/13 \$364.98

INVOICE SUMMARY

| | |
|---|-----------------|
| Previous Balance | \$287.71 |
| Other Transaction(s) | \$2.98 |
| Balance Forward | \$290.69 |
| Current Charges (See back page(s) for details) | |
| Water Charges | \$5.11 |
| Sewer Charges | \$6.12 |
| Sanitation Charges | \$21.92 |
| Storm Water Charges | \$13.87 |
| Miscellaneous Utility Charges | \$25.00 |
| Total Current Charges | \$72.02 |
| Total Amount Due | \$362.71 |

City of Dallas

MAIL PAYMENT TO:
City of Dallas
City Hall, 2D South
Dallas TX 75277

Operation WaterShare _____
Community Garden _____
Total Amount Enclosed \$ _____

Check here for change of address on back



1000198810 00000362710 00000364986 00000290694 101 51 20132399



Customer Service:
shellcreditcard.accountonline.com
Account Inquiries:
1-800-932-6728

Account Statement
Send Notice of Billing Errors and Customer Service Inquiries to:
SHELL
PO BOX 8406, SIOUX FALLS, SD 57117

Account Number: 31 209 5982 4

| Summary of Account Activity | | Payment Information | |
|-----------------------------|------------|---------------------|------------|
| Previous Balance | \$1,464.52 | New Balance | \$1,535.25 |
| Payments | -\$0.00 | Minimum Payment Due | \$273.97 |

Summary of Account Activity

| | |
|------------------------|-------------------|
| Previous Balance | \$1,464.52 |
| Payments | -\$0.00 |
| Other Credits | -\$0.00 |
| Purchases | +\$0.00 |
| Cash Advances | +\$0.00 |
| Fees Charged | +\$35.00 |
| Interest Charged | +\$35.73 |
| New Balance | \$1,535.25 |
| Past Due Amount | \$187.88 |

P.O. Box 790294
St. Louis, MO 63179

Statement Enclosed

SAVE STAMPS, TIME...
AND TREES!

Register now for Paperless Statements
and more at
shellcreditcard.accountonline.com

Payment Due Date September 6, 20

New Balance \$1,535.25
Past Due Amount[†] \$187.88
Minimum Payment Due \$273.97

Amount Enclosed: \$

[†]Past Due Amount is included in the Minimum Payment Due.
Please print address changes on the reverse side.
Make Checks Payable to ▼

QH00330193 1 AV 0.360 QI007770 TMN 007268 1793



SHELL
PROCESSING CENTER
DES MOINES IA 50359-0001



00800 0027397 0153525 0004000 00070703120959824 0511

*Done
marked*

| | |
|------------------|-----------------|
| Payment Due Date | August 20, 2013 |
| New Balance | \$5,497.89 |
| Total Amount Due | \$594.00 |

Home Phone

Work Phone



8991
E109



Make checks payable to:

WELLS FARGO FINANCIAL CARDS
P.O. BOX 660041
DALLAS TX 75266-0041



00005497890000013300000005940043888400071588798

Training Encompasses

- Financial Component to Most Physical Abuse Cases
- Capacity of Victim and Effect on Investigation and Prosecution
- Different Types of Financial Abuse and Case Studies
- Mistaken Belief it is a “Civil Matter”
- Power of Attorney/Guardianship/Probate
- Adult Protective Services

Training Encompasses

- Challenges in a Financial Abuse Case
- Evaluation of Financial Abuse Case
- Common Defenses to Both Physical and Financial Abuse Cases

Example of Case Study

DIMINISHED CAPACITY

- By reason of advanced age is known by the actor to have a diminished capacity to make informed and rational decisions about the reasonable disposition of property
- MUST BE KNOWN BY THE ACTOR
- Not legal terms of art
- Diminished Capacity at time of crime

Ruth's Story

- 76 years old
- Never married, no children
- Owned two duplexes in East Dallas worth \$300K
- Lived in one; rented out the other 3
- 54 year old Norman Lehr was a tenant



Ruth's Story

- Ruth was diagnosed with Alzheimer's in June 2005
- Lehr had Ruth execute a Warranty Deed granting the duplexes to him June 2, 2006
- 3 months later Ruth became an incapacitated ward of the State



Ruth's Story - Diminished Capacity established

- 6/05 doctor gives MMSE; Scored 17 out of 30 (15 or below is full blown)
- 9/05 taking Exelon for early Alzheimer's
- Doctor told Lehr of the diagnosis and need for medication; he accepted it
- 8/06 full psych eval explained severe deficiencies that a 15-20 minute conversation with her would reveal
- 8/06 Temporary Guardianship proceedings which ultimately led to Permanent Guardianship proceedings
- Ultimately Ruth became a ward of the State

Ruth's Story - how we proved Norman Lehr knew about her Diminished Capacity

- Lehr was longtime tenant. Helped with Doctor visits, medication
- Employees from the credit union where she banked that witnessed her mental decline over 05-06; Lehr accompanying her to bank; statements of Lehr that they recalled
- Starting in 05-DPD service calls (50+) - she thought her home was being broken into and people were stealing her possessions
- Mail man for 8+ years (had a lot of info about both)
- Realtor who had contacted her about selling the properties and immediately knew she was not well

Ruth's Story - how we proved Norman Lehr knew about her Diminished Capacity

- Property Manager for her rental properties
- Financial Advisor (she responded to his mailer)
- APS workers
- City of Dallas worker investigated
- Friend of Ruth's testified that Ruth told her Lehr had her sign papers and she didn't know what they were
- Guardianship initiated by police/city services- Lehr never disputed

Norman Lehr- 54 y/o tenant



A jury just convicted me of a
1st degree felony!

Questions?

- Call us
 - 214-653-3664
 - Stephanie.Martin@dallascounty.org
 - Alexis.goldate@dallascounty.org
 - Michael.Hunsucker@dallascounty.org

Matt Roberts is the Director of Provider Relations for the North Texas Behavioral Health Authority (NTBHA). He helps clinics, professionals and the community work seamlessly with NTBHA and helps ensure quality care is available to consumers in our six-county area. After running mental health advocacy organizations for a decade, Mr. Roberts knows our community benefits when payers, clinics and the community all work together. Trained in Mental Health First Aid, Mr. Roberts also holds a MBA in nonprofit management from the University of Dallas, and a B.A. in International Studies from Austin College.

Courtney Clemmons is Chief Clinical Officer for the North Texas Behavioral Health Authority (NTBHA). In her role, she has been particularly focused over the last 18 months on research and education regarding improvements in our continuum of crisis care for consumers in our six-county area. She spends the majority of her career prior to NTBHA working within criminal justice settings. She holds an MA in Clinical and Counseling Psychology and a BA in Psychology and Anthropology from Southern Methodist University and is a licensed professional counselor (LPC).

North Texas Behavioral Health Authority

Criminal Justice Advisory Board
June 18 2018

Agenda for Today

- ▶ Welcome
- ▶ Description of NTBHA Organization and Services
- ▶ Guidance for Emergency Detentions (MIW/APOWW)
 - ▶ Hospitals & Locations
 - ▶ Attorney General Opinions
- ▶ Barriers and Issues in Your Municipality
- ▶ Conclusion and Next Steps

Public Mental Health Care In Texas



Funding and Rules



Budget, Legislative Intent, TAC & Laws





Performance Contract, Funding & Texas Administrative Code



Required by HHSC to:

- Plan
- Develop Policy
- Coordinate
- Allocate and develop resources for mental health services



Old NorthSTAR &
ValueOptions
vs
New NTBHA

NorthSTAR

Local Mental Health System:

- After bankruptcies and tumult in local mental health authorities, the State decided to try a new approach in North Texas:
 - Combined 7 counties
 - Obtained a waivers from the Center for Medicare and Medicaid Services.
 - Started NorthSTAR as a new concept.
 - All Consumers were eligible members of an insurance product.
 - Braided indigent and Medicaid funds
 - For-profit insurance companies allowed to take 12% of \$120+ Million.
 - At risk for all Medicaid and indigent consumers care
 - No waitlists for services



1999

The Texas Sunset Commission Actions

In July 2015 Texas Sunset Commission published its report and recommended:

- ▶ Ending NorthSTAR Pilot Project
- ▶ Transferring responsibility from the state to local authorities
- ▶ Completing the transfer by 1/1/2017

NTBHA:

- ▶ By the time the Sunset Commission recommendations were passed into state law in May of 2016, NTBHA had 7 months to change everything but its name.
- ▶ HHSC funding to support the transition was made available September 2016.

NTBHA

- ▶ A Local Behavioral Health Authority:
 - Provides services to a specific geographic area called a Local Service Area.
 - Required by HHSC to:
 - ▶ Plan
 - ▶ Develop Policy
 - ▶ Coordinate
 - ▶ Allocate and develop resources for mental health services

- ▶ Some key notable differences from VO:
 - Not an insurance company
 - Not "at risk"
 - Manage only indigent funds
 - Can not make a profit
 - Quasi-governmental

Priority Populations

Adults

- ▶ Adults who have severe and persistent mental illnesses such as:
 - ▶ schizophrenia,
 - ▶ major depression,
 - ▶ bipolar disorder, or other severely disabling mental disorders
- ▶ who require crisis resolution or ongoing and long-term support and treatment.

Children & Adolescents

- ▶ Have a diagnosis of mental illness; and;
- ▶ Exhibit serious emotional, behavioral, or mental disorders; and
 - ▶ Have a serious functional impairment; or
 - ▶ Are at risk of disruption of a preferred living or child care environment due to psychiatric symptoms; or
- ▶ Are enrolled in a school system's special education program because of serious emotional disturbance

Services

Mental Health

- ▶ Outpatient Mental Health (MH)- a robust array of services are available with many of NTBHA contracted Comprehensive Mental Health Providers (CMHP)
- ▶ Crisis Services
 - ▶ Hotline (1-866-260-8000)
 - ▶ Mobile Crisis Outreach Team (MCOT)
 - ▶ After-hours Crisis Clinic (SABH)
 - ▶ Crisis Residential
 - ▶ Community Inpatient Stabilization & State Hospital Placements

Substance Use Disorder

- ▶ Outpatient
- ▶ Residential
- ▶ Detoxification (residential and ambulatory)
- ▶ Specialized Female/Women and Children
- ▶ Outreach, Screening, Assessment, and Referral (OSAR)

NTBHA Primarily Uses Contracted Providers

- ▶ Metrocare Services
- ▶ Child and Family Guidance Center
- ▶ Homeward Bound
- ▶ Turtle Creek Recovery
- ▶ Lakes Regional
- ▶ IPS
- ▶ Youth 180
- ▶ Adapt Community Solutions (ACS)
- ▶ Nexus
- ▶ Centro de Mi Salud
- ▶ Phoenix House
- ▶ S.T.E.P Med. Clinic
- ▶ West Texas Counseling
- ▶ Others

Emergency Detentions

- MIW
- APOWW

GUIDANCE
LOCATIONS
RESOURCES

Where to Take Emergency Detentions

Title 7, Subtitle C, Chapter 573

- ▶ **Per this statute:**
- ▶ (d) A peace officer who takes a person into custody under Subsection (a) shall immediately:
 - ▶ (1) transport the apprehended person to:
 - ▶ (A) the nearest appropriate inpatient mental health facility; or
 - ▶ (B) a mental health facility deemed suitable by the local mental health authority, if an appropriate inpatient mental health facility is not available;

Hospitals' Responsibilities

¡ES LA LEY!
SI USTED VA CUALQUIER
SALA DE
EMERGENCIA

Y TIENE UNA EMERGENCIA MEDICA O
HA COMENADO EL PARTO

USTED TIENE EL DERECHO DE RECIBIR,
DENTRO DE LA CAPACIDAD DE LA INSTITUCION

- **Una ELAVACION medica apropiada**
 - **TRATAMIENTO ESTABILIZANTE necesario**
(incluyendo el tratamient de un bebe que todavia no nacio)
y si fuera necesario
 - **La TRANSFERENCIA a otra instalicion**
aunque
- USTED NO PUEDA PAGAR O NO TENGA**
SERURO MEDICO

AUNQUE NO TENGA MEDICARE O MEDICAID
Este centro medico participa del programa de Medicaid

IT'S THE LAW
IF YOU HAVE A MEDICAL EMERGENCY
OR ARE IN LABOR,
YOU HAVE THE RIGHT TO RECEIVE,
within the capabilities of this hospital's staff
and facilities:

An appropriate Medical SCREENING EXAMINATION
Necessary STABILIZING TREATMENT
(including treatment for an unborn child) and, if

necessary,
An appropriate TRANSFER to another facility
Even if YOU CANNOT PAY or DO NOT HAVE
MEDICAL INSURANCE

or
YOU ARE NOT ENTITLED TO MEDICARE
OR MEDICAID

This hospital does participate in the Medicaid Program

EMTALA

- ▶ Applies to all hospitals that:
 - Participate in the Medicare program and
 - Have a dedicated emergency department (DED)
- ▶ A dedicated emergency department is a portion of the hospital that:
 - Is licensed by the state as an emergency department;
 - Holds itself out as a place that treats patients on an unscheduled emergency basis; and/or
 - Sees at least 1/3 of its patients on an unscheduled basis for what may be an emergency condition
- ▶ There are two duties for hospitals under EMTALA:
 - The duty to screen for an emergency medical condition (EMC)
 - The duty to stabilize an EMC
 - ▶ The hospital should admit if have capacity to treat and/or should provide whatever stabilizing care it can provide to prevent deterioration prior to transfer if the hospital does not have capacity to treat the person
 - ▶ The hospital's responsibility to secure transfer to appropriate facility or risk reverse dumping

More on Emergency Detentions

Texas Attorney General's Opinions:

- ▶ GA-0753, states that law enforcement cannot be required to transport an individual to a medical facility for evaluation prior to transporting to a mental health facility
- ▶ GA-0877, states that law enforcement is not mandated to remain with the individual at the mental health facility, only to transport to the facility

But what really happens... and what do we do about it

Collaboration is the centerpiece in the transformation of mental health crisis services.

- ▶ Communication
 - ▶ LEA and hospital roundtables
 - ▶ Report the problems to NTBHA so we may address the issue with the hospital (469-454-0011)
- ▶ Education/Support
 - ▶ Individual department & community-wide trainings
 - ▶ Regional Emergency Detention Guide
- ▶ Develop centralized call center with “air traffic control” capabilities
 - ▶ Route police to most appropriate and available facility
 - ▶ Allows dispersion of police drop offs to EDs and avoid wasted time going to facilities on divert or absence capacity
 - ▶ Decision support
- ▶ Resource development
 - ▶ Expanded drop-off locations

Thank You

We welcome a conversation about the issues in your municipality

Courtney Clemmons, MA, LPC

Chief Clinical Officer

cclemmons@ntbha.org

Matt Roberts

Director, Provider Relations

mroberts@ntbha.org

**Dallas County District Attorney's Office
Bond Forfeiture Unit
Statistical Reporting January Through February 2018**

| For the Week Ended | Number of Cases | Interest | Court Costs | Judgment | Judgment Total |
|-------------------------------|-----------------|--------------------|---------------------|---------------------|---------------------|
| January 3, 2018 | 4 | \$625.31 | \$1,580.00 | \$5,000.00 | \$7,205.31 |
| January 8, 2018 | 141 | \$4,159.86 | \$44,567.00 | \$25,265.00 | \$73,991.86 |
| January 16, 2018 | 62 | \$3,892.31 | \$22,004.00 | \$13,114.00 | \$39,010.31 |
| January 22, 2018 | 9 | \$459.33 | \$3,555.00 | \$1,500.00 | \$5,514.33 |
| January 29, 2018 | 22 | \$926.86 | \$8,615.00 | \$105.00 | \$9,646.86 |
| January Total | 238 | \$10,063.67 | \$80,321.00 | \$44,984.00 | \$135,368.67 |
| For the Week Ended | Number of Cases | Interest | Court Costs | Judgment | Judgment Total |
| February 5, 2018 | 9 | \$250.25 | \$3,555.00 | \$13,500.00 | \$17,305.25 |
| February 12, 2018 | 124 | \$2,770.66 | \$41,709.00 | \$29,315.00 | \$73,794.66 |
| February 19, 2018 | 135 | \$4,106.94 | \$44,409.00 | \$48,732.00 | \$97,247.94 |
| February 26, 2018 | 9 | \$0.00 | \$3,555.00 | \$202.40 | \$3,757.40 |
| February Total | 277 | \$7,127.85 | \$93,228.00 | \$91,749.40 | \$192,105.25 |
| For the Week Ended | Number of Cases | Interest | Court Costs | Judgment | Judgment Total |
| March 5, 2018 | 14 | \$618.52 | \$5,530.00 | | \$6,148.52 |
| March 12, 2018 | 15 | \$943.34 | \$5,925.00 | \$6,500.00 | \$13,368.34 |
| March 19, 2018 | 253 | \$5,013.35 | \$84,179.00 | \$39,069.00 | \$128,261.35 |
| March 26, 2018 | 15 | \$1,805.94 | \$5,925.00 | \$1,500.00 | \$9,230.94 |
| March Total | 297 | \$8,381.15 | \$101,559.00 | \$47,069.00 | \$157,009.15 |
| For the Week Ended | Number of Cases | Interest | Court Costs | Judgment | Judgment Total |
| April 9, 2018 | 13 | \$1,460.14 | \$5,135.00 | \$3,000.00 | \$9,595.14 |
| April 17, 2018 | 133 | \$2,886.96 | \$46,560.33 | \$33,416.00 | \$82,863.29 |
| April 30, 2018 | 5 | \$1,142.65 | \$1,975.00 | \$0.00 | \$3,117.65 |
| April Total | 151 | \$5,489.75 | \$53,670.33 | \$36,416.00 | \$95,576.08 |
| For the Week Ended | Number of Cases | Interest | Court Costs | Judgment | Judgment Total |
| May 1, 2018 | 13 | \$493.28 | \$4,740.00 | \$0.00 | \$5,233.28 |
| May 7, 2018 | 141 | \$1,811.42 | \$51,427.00 | \$16,530.00 | \$69,768.42 |
| May 14, 2018 | 45 | \$1,959.15 | \$14,748.00 | \$11,543.00 | \$28,250.15 |
| May 21, 2018 | 49 | \$1,257.74 | \$15,959.00 | \$15,750.00 | \$32,966.74 |
| May 29, 2018 | 8 | \$456.07 | \$3,160.00 | \$25,000.00 | \$28,616.07 |
| May Total | 256 | \$5,977.66 | \$90,034.00 | \$68,823.00 | \$164,834.66 |
| Grand Total for Period | 1219 | \$37,040.08 | \$418,812.33 | \$289,041.40 | \$744,893.81 |

New Felony Figures a/o - 06/01/18

| | 2007 | | 2008 | | 2009 | | 2010 | | 2011 | | 2012 | | 2013 | |
|--------------|------------|---------------------|------------|---------------------|-----------|---------------------|-----------|---------------------|-----------|---------------------|-----------|---------------------|------------|---------------------|
| | Count | Amount | Count | Amount | Count | Amount | Count | Amount | Count | Amount | Count | Amount | Count | Amount |
| January | 11 | \$49,238.00 | 21 | \$82,550.00 | 3 | \$8,000.00 | 15 | \$36,841.00 | 5 | \$7,500.00 | 2 | \$11,500.00 | 20 | \$69,048.00 |
| February | 12 | \$24,000.00 | 13 | \$43,350.00 | 8 | \$15,250.00 | 6 | \$12,000.00 | 2 | \$30,000.00 | 2 | \$6,500.00 | 4 | \$15,500.00 |
| March | 31 | \$55,184.00 | 16 | \$28,150.00 | 4 | \$8,000.00 | 7 | \$10,800.00 | 2 | \$5,000.00 | 2 | \$3,000.00 | 8 | \$112,722.00 |
| April | 19 | \$64,647.00 | 4 | \$10,500.00 | 7 | \$12,300.00 | 9 | \$21,800.00 | 2 | \$3,900.00 | 8 | \$38,500.00 | 12 | \$26,298.00 |
| May | 33 | \$100,010.00 | 19 | \$39,700.00 | 9 | \$36,800.00 | 2 | \$3,000.00 | 1 | \$1,500.00 | 4 | \$20,387.00 | 14 | \$16,601.00 |
| June | 16 | \$59,678.00 | 10 | \$17,800.00 | 5 | \$10,800.00 | 1 | \$1,500.00 | 12 | \$39,759.00 | 12 | \$28,356.00 | 15 | \$62,796.00 |
| July | 22 | \$39,700.00 | 15 | \$38,100.00 | 3 | \$4,000.00 | 6 | \$8,800.00 | 4 | \$7,000.00 | 3 | \$10,000.00 | 15 | \$58,666.00 |
| August | 3 | \$9,000.00 | 14 | \$28,600.00 | 19 | \$42,900.00 | 4 | \$7,000.00 | 6 | \$382,340.00 | 13 | \$43,031.00 | 5 | \$12,000.00 |
| September | 4 | \$75,000.00 | 8 | \$19,700.00 | 15 | \$30,600.00 | 4 | \$10,955.00 | 1 | \$50,000.00 | 8 | \$39,500.00 | 6 | \$42,548.00 |
| October | 8 | \$19,250.00 | 9 | \$24,750.00 | 9 | \$43,500.00 | 3 | \$8,000.00 | 43 | \$58,769.00 | 12 | \$58,887.00 | 5 | \$33,500.00 |
| November | 50 | \$106,153.00 | 4 | \$11,000.00 | 8 | \$11,650.00 | 3 | \$14,000.00 | 11 | \$9,861.00 | 15 | \$50,596.00 | 11 | \$32,094.00 |
| December | 26 | \$80,000.00 | 9 | \$15,100.00 | 5 | \$14,000.00 | 8 | \$12,457.00 | 1 | \$10,000.00 | 7 | \$40,002.00 | 5 | \$7,000.00 |
| Total | 235 | \$681,860.00 | 142 | \$359,300.00 | 95 | \$237,800.00 | 68 | \$147,153.00 | 90 | \$605,629.00 | 88 | \$350,259.00 | 120 | \$488,773.00 |

| 2014 | | 2015 | | 2016 | | 2017 | | 2018 | | Grand Total | |
|------------|---------------------|------------|---------------------|------------|---------------------|------------|-----------------------|-----------|---------------------|-------------|-----------------------|
| Count | Amount | Count | Amount | Count | Amount | Count | Amount | Count | Amount | Count | Amount |
| 11 | \$88,791.00 | 11 | \$16,188.00 | 28 | \$24,035.00 | 28 | \$120,000.00 | 8 | \$20,185.00 | 163 | \$533,876.00 |
| 9 | \$43,960.00 | 6 | \$25,650.00 | 16 | \$42,890.40 | 42 | \$205,179.66 | 12 | \$116,180.00 | 132 | \$580,460.06 |
| 12 | \$15,763.00 | 4 | \$3,610.00 | 9 | \$50,230.00 | 13 | \$65,015.61 | 5 | \$32,000.00 | 113 | \$389,474.61 |
| 5 | \$203,250.00 | 12 | \$14,325.00 | 12 | \$10,740.00 | 6 | \$12,002.31 | 4 | \$8,500.00 | 100 | \$426,762.31 |
| 7 | \$116,250.00 | 4 | \$3,695.00 | 11 | \$7,610.00 | 12 | \$35,633.95 | 6 | \$10,500.00 | 122 | \$391,686.95 |
| 7 | \$16,391.00 | 14 | \$67,377.00 | 9 | \$25,925.00 | 11 | \$37,741.33 | | | 112 | \$368,123.33 |
| 11 | \$49,482.00 | 18 | \$16,230.00 | 10 | \$54,000.00 | 9 | \$83,500.00 | | | 116 | \$369,478.00 |
| 8 | \$8,935.00 | 150 | \$369,625.00 | 5 | \$66,695.00 | 8 | \$170,657.75 | | | 235 | \$1,140,783.75 |
| 15 | \$13,158.00 | 15 | \$37,500.00 | 11 | \$13,795.00 | 6 | \$96,500.00 | | | 93 | \$429,256.00 |
| 3 | \$25,797.00 | 3 | \$5,500.00 | 8 | \$11,295.00 | 18 | \$132,000.84 | | | 121 | \$421,248.84 |
| 8 | \$31,969.00 | 5 | \$27,500.00 | 6 | \$94,685.00 | 5 | \$53,055.00 | | | 126 | \$442,563.00 |
| 5 | \$8,000.00 | 12 | \$33,654.00 | 8 | \$31,370.00 | 6 | \$48,000.00 | | | 92 | \$299,583.00 |
| 101 | \$621,746.00 | 254 | \$620,854.00 | 133 | \$433,270.40 | 164 | \$1,059,286.45 | 35 | \$187,365.00 | 1525 | \$5,793,295.85 |

New Misdemeanor Figures a/o - 06/01/18

| | 2007 | | 2008 | | 2009 | | 2010 | | 2011 | | 2012 | | 2013 | |
|--------------|-------------|-----------------------|-------------|-----------------------|-------------|---------------------|------------|---------------------|------------|---------------------|------------|---------------------|------------|---------------------|
| | Count | Amount | Count | Amount | Count | Amount | Count | Amount | Count | Amount | Count | Amount | Count | Amount |
| January | 177 | \$86,750.00 | 243 | \$140,727.00 | 93 | \$52,485.00 | 153 | \$73,825.00 | 39 | \$24,500.00 | 85 | \$50,570.00 | 54 | \$28,527.00 |
| February | 173 | \$85,400.00 | 371 | \$184,420.00 | 156 | \$82,570.00 | 76 | \$42,810.00 | 100 | \$52,815.00 | 29 | \$24,000.00 | 81 | \$40,929.00 |
| March | 41 | \$22,700.00 | 103 | \$54,090.00 | 96 | \$58,100.00 | 92 | \$48,900.00 | 55 | \$35,250.00 | 91 | \$53,460.00 | 81 | \$64,123.00 |
| April | 404 | \$221,300.00 | 215 | \$129,700.00 | 123 | \$67,595.00 | 39 | \$28,750.00 | 94 | \$61,660.00 | 66 | \$29,215.00 | 66 | \$47,400.00 |
| May | 371 | \$208,815.00 | 153 | \$81,850.00 | 174 | \$94,645.00 | 69 | \$46,990.00 | 44 | \$30,380.00 | 44 | \$40,750.00 | 58 | \$35,687.00 |
| June | 131 | \$74,070.00 | 315 | \$185,570.00 | 190 | \$98,355.00 | 89 | \$56,185.00 | 57 | \$41,080.00 | 48 | \$39,680.00 | 58 | \$27,069.00 |
| July | 214 | \$131,725.00 | 133 | \$87,985.00 | 98 | \$59,735.00 | 58 | \$43,585.00 | 112 | \$67,105.00 | 64 | \$43,898.00 | 27 | \$31,500.00 |
| August | 193 | \$113,185.00 | 190 | \$112,425.00 | 90 | \$58,560.00 | 35 | \$28,750.00 | 77 | \$53,265.00 | 99 | \$52,345.00 | 50 | \$23,245.00 |
| September | 361 | \$194,860.00 | 177 | \$104,720.00 | 151 | \$83,500.00 | 83 | \$45,490.00 | 59 | \$32,560.00 | 67 | \$53,662.00 | 60 | \$45,440.00 |
| October | 241 | \$128,265.00 | 120 | \$65,765.00 | 98 | \$59,155.00 | 59 | \$30,935.00 | 77 | \$45,600.00 | 90 | \$42,814.00 | 49 | \$28,628.00 |
| November | 146 | \$89,980.00 | 180 | \$98,788.00 | 147 | \$83,445.00 | 70 | \$41,050.00 | 124 | \$62,435.00 | 81 | \$42,318.00 | 53 | \$32,743.00 |
| December | 123 | \$75,140.00 | 208 | \$116,805.00 | 115 | \$70,300.00 | 77 | \$44,175.00 | 74 | \$59,030.00 | 55 | \$44,171.00 | 32 | \$28,250.00 |
| Total | 2575 | \$1,432,190.00 | 2408 | \$1,362,845.00 | 1531 | \$868,445.00 | 900 | \$531,445.00 | 912 | \$565,680.00 | 819 | \$516,883.00 | 669 | \$433,541.00 |

| 2014 | | 2015 | | 2016 | | 2017 | | 2018 | | Grand Total | |
|------------|---------------------|-------------|-----------------------|------------|---------------------|------------|---------------------|------------|---------------------|--------------|-----------------------|
| Count | Amount | Count | Amount | Count | Amount | Count | Amount | Count | Amount | Count | Amount |
| 64 | \$38,927.00 | 37 | \$28,254.00 | 48 | \$39,378.00 | 276 | \$144,160.00 | 42 | \$26,200.00 | 1311 | \$734,303.00 |
| 65 | \$42,407.00 | 66 | \$50,938.00 | 50 | \$52,000.00 | 174 | \$144,813.00 | 29 | \$17,321.00 | 1370 | \$820,423.00 |
| 62 | \$36,552.00 | 44 | \$22,871.00 | 25 | \$20,970.00 | 52 | \$37,909.26 | 30 | \$15,777.00 | 772 | \$470,702.26 |
| 23 | \$18,699.00 | 28 | \$25,855.00 | 31 | \$20,879.00 | 40 | \$23,655.74 | 53 | \$36,217.00 | 1182 | \$710,925.74 |
| 15 | \$13,500.00 | 31 | \$24,770.00 | 34 | \$33,775.00 | 18 | \$26,500.00 | 40 | \$36,016.00 | 1051 | \$673,678.00 |
| 42 | \$25,640.00 | 44 | \$25,664.00 | 41 | \$25,379.00 | 41 | \$26,527.00 | | | 1056 | \$625,219.00 |
| 104 | \$70,414.00 | 44 | \$37,356.00 | 19 | \$12,794.00 | 38 | \$20,299.00 | | | 911 | \$606,396.00 |
| 53 | \$46,184.00 | 1850 | \$1,206,600.00 | 15 | \$18,000.00 | 55 | \$37,466.00 | | | 2707 | \$1,750,025.00 |
| 37 | \$24,929.00 | 105 | \$97,302.00 | 59 | \$46,049.00 | 49 | \$34,533.50 | | | 1208 | \$763,045.50 |
| 39 | \$30,975.00 | 35 | \$27,975.00 | 16 | \$12,199.00 | 142 | \$108,834.00 | | | 966 | \$581,145.00 |
| 20 | \$12,644.00 | 37 | \$28,667.00 | 40 | \$24,464.00 | 33 | \$21,621.00 | | | 931 | \$538,155.00 |
| 52 | \$39,164.00 | 40 | \$25,807.00 | 56 | \$63,000.00 | 34 | \$32,986.00 | | | 866 | \$598,828.00 |
| 576 | \$400,035.00 | 2361 | \$1,602,059.00 | 434 | \$368,887.00 | 952 | \$659,304.50 | 194 | \$131,531.00 | 14331 | \$8,872,845.50 |

| | 5/1 | 5/2 | 5/3 | 5/4 | 5/5 | 5/6 | 5/7 | 5/8 | 5/9 | 5/10 | 5/11 | 5/12 | 5/13 | 5/14 | 5/15 | 5/16 | 5/17 | 5/18 | 5/19 | 5/20 | 5/21 | 5/22 | 5/23 | 5/24 | 5/25 | 5/26 | 5/27 | 5/28 | 5/29 | 5/30 | 5/31 | Avg |
|-----------------------------|-------|-------|-------|-------|-------|-------|-------|-------|-------|-------|-------|-------|-------|-------|-------|-------|-------|-------|-------|-------|-------|-------|-------|-------|-------|-------|-------|-------|-------|-------|-------|------|
| Felony not filed | 327 | 319 | 319 | 302 | 274 | 291 | 323 | 309 | 306 | 302 | 301 | 300 | 344 | 367 | 356 | 346 | 354 | 323 | 324 | 365 | 376 | 389 | 356 | 339 | 336 | 324 | 358 | 390 | 420 | 400 | 389 | 340 |
| Felony pend. Grand Jury | 601 | 599 | 631 | 608 | 614 | 613 | 611 | 634 | 617 | 619 | 593 | 585 | 579 | 574 | 579 | 570 | 559 | 563 | 554 | 549 | 553 | 545 | 571 | 571 | 574 | 562 | 557 | 556 | 559 | 556 | 565 | 581 |
| Felony not incl. SJF | 1,607 | 1609 | 1593 | 1580 | 1574 | 1577 | 1576 | 1580 | 1593 | 1593 | 1590 | 1589 | 1589 | 1591 | 1607 | 1598 | 1593 | 1591 | 1606 | 1605 | 1603 | 1602 | 1597 | 1603 | 1594 | 1590 | 1591 | 1593 | 1592 | 1603 | 1613 | 1594 |
| SJF pend dispo | 254 | 246 | 232 | 241 | 232 | 233 | 230 | 220 | 219 | 218 | 231 | 245 | 245 | 246 | 240 | 246 | 256 | 264 | 254 | 253 | 253 | 250 | 242 | 250 | 246 | 247 | 248 | 249 | 254 | 258 | 250 | 244 |
| PV-Felony | 269 | 272 | 268 | 260 | 247 | 254 | 260 | 258 | 256 | 268 | 266 | 261 | 268 | 271 | 276 | 271 | 275 | 267 | 262 | 276 | 282 | 265 | 266 | 267 | 260 | 243 | 248 | 256 | 260 | 255 | 235 | 263 |
| TDC over 10yr/appeal | 379 | 355 | 354 | 367 | 378 | 378 | 378 | 365 | 338 | 346 | 360 | 371 | 371 | 371 | 380 | 354 | 320 | 267 | 277 | 277 | 253 | 264 | 279 | 289 | 302 | 315 | 315 | 315 | 315 | 307 | 303 | 330 |
| Bench Warrants | 47 | 40 | 43 | 41 | 42 | 42 | 42 | 45 | 35 | 36 | 36 | 37 | 37 | 37 | 38 | 39 | 40 | 35 | 36 | 36 | 36 | 35 | 36 | 36 | 37 | 37 | 36 | 36 | 35 | 38 | 38 | |
| TDC<10yr/appeal | 4 | 4 | 4 | 4 | 4 | 4 | 4 | 4 | 4 | 4 | 4 | 5 | 5 | 5 | 6 | 6 | 6 | 5 | 6 | 6 | 6 | 6 | 6 | 6 | 6 | 7 | 7 | 7 | 7 | 7 | 7 | 5 |
| Sentd. SJF | 101 | 87 | 89 | 92 | 102 | 102 | 102 | 97 | 72 | 75 | 73 | 76 | 76 | 76 | 77 | 73 | 76 | 86 | 92 | 92 | 92 | 93 | 65 | 70 | 77 | 84 | 84 | 83 | 78 | 80 | 83 | 84 |
| SJF on appeal | 0 | 0 | 0 | 0 | 0 | 0 | 0 | 0 | 0 | 0 | 0 | 0 | 0 | 0 | 0 | 0 | 0 | 0 | 0 | 0 | 0 | 0 | 0 | 0 | 0 | 0 | 0 | 0 | 0 | 0 | 0 | 0 |
| SJF serv in co jail | 85 | 81 | 85 | 84 | 84 | 80 | 80 | 80 | 88 | 85 | 84 | 80 | 79 | 79 | 83 | 84 | 83 | 86 | 91 | 87 | 84 | 83 | 84 | 86 | 86 | 93 | 88 | 84 | 83 | 85 | 90 | 84 |
| Misd. not filed | 133 | 136 | 129 | 103 | 101 | 122 | 133 | 152 | 141 | 153 | 152 | 133 | 148 | 166 | 169 | 170 | 134 | 116 | 115 | 135 | 143 | 139 | 127 | 148 | 133 | 122 | 156 | 181 | 201 | 200 | 189 | 145 |
| Misd. filed pend. | 157 | 166 | 163 | 174 | 173 | 174 | 173 | 165 | 155 | 169 | 164 | 205 | 201 | 207 | 175 | 177 | 203 | 204 | 181 | 188 | 192 | 193 | 208 | 194 | 184 | 179 | 180 | 180 | 179 | 173 | 177 | 181 |
| Misd-PV | 0 | 0 | 0 | 0 | 0 | 0 | 0 | 0 | 0 | 0 | 0 | 0 | 0 | 0 | 0 | 0 | 0 | 0 | 0 | 0 | 0 | 0 | 0 | 0 | 0 | 0 | 0 | 0 | 0 | 0 | 0 | 0 |
| Serv in jail (Cond of Prob) | 51 | 47 | 48 | 50 | 50 | 43 | 40 | 39 | 44 | 42 | 52 | 54 | 49 | 45 | 49 | 52 | 56 | 61 | 63 | 57 | 56 | 58 | 57 | 55 | 60 | 62 | 58 | 54 | 50 | 54 | 54 | 52 |
| Serving Co time & fines | 59 | 61 | 61 | 65 | 66 | 64 | 59 | 65 | 68 | 74 | 77 | 81 | 70 | 65 | 72 | 68 | 61 | 59 | 61 | 54 | 53 | 52 | 54 | 54 | 59 | 58 | 59 | 57 | 54 | 54 | 54 | 62 |
| Serv fines/CT cost only | 0 | 0 | 0 | 0 | 0 | 0 | 0 | 0 | 0 | 0 | 0 | 0 | 0 | 0 | 0 | 0 | 0 | 0 | 0 | 0 | 0 | 0 | 0 | 0 | 0 | 0 | 0 | 0 | 0 | 0 | 0 | 0 |
| Out of county/state | 77 | 79 | 88 | 75 | 70 | 70 | 75 | 69 | 61 | 68 | 56 | 59 | 65 | 67 | 57 | 66 | 74 | 77 | 78 | 84 | 87 | 60 | 69 | 96 | 80 | 80 | 86 | 92 | 80 | 75 | 80 | 74 |
| Parole Violations | 241 | 237 | 233 | 216 | 216 | 221 | 222 | 225 | 222 | 230 | 224 | 220 | 223 | 225 | 232 | 237 | 250 | 231 | 243 | 246 | 239 | 244 | 241 | 244 | 240 | 238 | 244 | 246 | 247 | 243 | 252 | 235 |
| SAFPF | 105 | 103 | 106 | 111 | 113 | 113 | 113 | 116 | 111 | 108 | 110 | 113 | 113 | 111 | 115 | 116 | 117 | 120 | 125 | 125 | 120 | 121 | 102 | 98 | 104 | 106 | 106 | 106 | 105 | 102 | 102 | 111 |
| Special Programs | 127 | 122 | 124 | 136 | 145 | 145 | 142 | 142 | 138 | 139 | 140 | 149 | 149 | 144 | 135 | 135 | 146 | 158 | 164 | 164 | 159 | 150 | 155 | 158 | 165 | 168 | 168 | 168 | 154 | 158 | 165 | 149 |
| Other- Incompetent | 141 | 150 | 152 | 153 | 156 | 156 | 156 | 157 | 150 | 154 | 159 | 159 | 159 | 159 | 156 | 152 | 154 | 152 | 152 | 149 | 150 | 149 | 151 | 152 | 151 | 151 | 151 | 151 | 149 | 152 | 153 | |
| US Marshall holds | 12 | 13 | 12 | 12 | 12 | 12 | 12 | 12 | 13 | 15 | 14 | 15 | 15 | 14 | 14 | 14 | 14 | 14 | 14 | 14 | 14 | 14 | 15 | 14 | 14 | 16 | 16 | 16 | 16 | 16 | 13 | 14 |
| Contempt-in Jail | 14 | 14 | 12 | 14 | 13 | 13 | 13 | 9 | 8 | 8 | 9 | 8 | 9 | 9 | 10 | 10 | 15 | 13 | 13 | 14 | 13 | 10 | 14 | 13 | 9 | 9 | 10 | 10 | 10 | 10 | 12 | 11 |
| Contempt-Furlough | 0 | 0 | 0 | 0 | 0 | 0 | 0 | 0 | 0 | 0 | 0 | 0 | 0 | 0 | 0 | 0 | 0 | 0 | 0 | 0 | 0 | 0 | 0 | 0 | 0 | 0 | 0 | 0 | 0 | 0 | 0 | 0 |
| PEACE Bond | 0 | 0 | 0 | 0 | 0 | 0 | 0 | 0 | 0 | 0 | 0 | 0 | 0 | 0 | 0 | 0 | 0 | 0 | 0 | 0 | 0 | 0 | 0 | 0 | 0 | 0 | 0 | 0 | 0 | 0 | 0 | 0 |
| TYC hold | 0 | 0 | 0 | 0 | 0 | 0 | 0 | 0 | 0 | 0 | 0 | 0 | 0 | 0 | 0 | 0 | 0 | 0 | 0 | 0 | 0 | 0 | 0 | 0 | 0 | 0 | 0 | 0 | 0 | 0 | 0 | 0 |
| Immigration hold | 8 | 5 | 4 | 12 | 4 | 1 | 0 | 2 | 12 | 5 | 6 | 4 | 2 | 3 | 11 | 3 | 3 | 9 | 8 | 0 | 0 | 11 | 6 | 4 | 7 | 6 | 2 | 0 | 1 | 8 | 4 | 5 |
| Class C Misd. only | 22 | 18 | 19 | 23 | 20 | 17 | 15 | 15 | 15 | 20 | 47 | 36 | 17 | 10 | 24 | 19 | 21 | 17 | 25 | 13 | 5 | 15 | 12 | 9 | 21 | 22 | 13 | 11 | 14 | 21 | 18 | 19 |
| Contract inmates | 0 | 0 | 0 | 0 | 0 | 0 | 0 | 0 | 0 | 0 | 0 | 0 | 0 | 0 | 0 | 0 | 0 | 0 | 0 | 0 | 0 | 0 | 0 | 0 | 0 | 0 | 0 | 0 | 0 | 0 | 0 | 0 |
| US Military hold | 0 | 0 | 0 | 0 | 0 | 0 | 0 | 0 | 0 | 0 | 0 | 0 | 0 | 0 | 0 | 0 | 0 | 0 | 0 | 0 | 0 | 0 | 0 | 0 | 0 | 0 | 0 | 0 | 0 | 0 | 0 | 0 |
| Default | 26 | 23 | 33 | 33 | 51 | 49 | 33 | 34 | 58 | 38 | 37 | 47 | 48 | 45 | 34 | 44 | 34 | 28 | 59 | 36 | 30 | 56 | 40 | 50 | 41 | 39 | 40 | 34 | 43 | 24 | 40 | 40 |
| With Furlough added | 4,847 | 4,786 | 4,802 | 4,756 | 4,741 | 4,774 | 4,792 | 4,794 | 4,724 | 4,769 | 4,785 | 4,832 | 4,861 | 4,887 | 4,895 | 4,850 | 4,844 | 4,746 | 4,803 | 4,828 | 4,798 | 4,806 | 4,750 | 4,805 | 4,786 | 4,758 | 4,822 | 4,875 | 4,909 | 4,873 | 4,885 | 4812 |
| Jail Population-Actual | 4,847 | 4,786 | 4,802 | 4,756 | 4,741 | 4,774 | 4,792 | 4,794 | 4,724 | 4,769 | 4,785 | 4,832 | 4,861 | 4,887 | 4,895 | 4,850 | 4,844 | 4,746 | 4,803 | 4,828 | 4,798 | 4,806 | 4,750 | 4,805 | 4,786 | 4,758 | 4,822 | 4,875 | 4,909 | 4,873 | 4,885 | 4812 |
| INTAKES | 180 | 203 | 162 | 167 | 141 | 138 | 182 | 203 | 223 | 209 | 216 | 146 | 159 | 197 | 212 | 249 | 182 | 204 | 160 | 112 | 171 | 189 | 226 | 202 | 195 | 166 | 144 | 162 | 168 | 193 | 164 | 181 |
| RELEASES | 185 | 255 | 186 | 211 | 124 | 108 | 135 | 234 | 243 | 190 | 205 | 133 | 112 | 153 | 217 | 261 | 231 | 284 | 109 | 110 | 180 | 213 | 219 | 196 | 247 | 112 | 101 | 90 | 208 | 192 | 183 | 182 |
| VARIANCE | -5 | -52 | -24 | -44 | 17 | 30 | 47 | -31 | -20 | 19 | 11 | 13 | 47 | 44 | -5 | -12 | -49 | -80 | 51 | 2 | -9 | -24 | 7 | 6 | -52 | 54 | 43 | 72 | -40 | 1 | -19 | 0 |

ALS 23

Total Bookins 5,625

Total Releases 5,627

Total Jail Bed Days 149,183.00

= \$ 8,258,771

| | May 16 | Jun 16 | Jul 16 | Aug 16 | Sep 16 | Oct 16 | Nov 16 | Dec 16 | Jan 17 | Feb 17 | Mar 17 | Apr 17 | May 17 | Jun 17 | Jul 17 | Aug 17 | Sep 17 | Oct 17 | Nov 17 | Dec 17 | Jan 18 | Feb 18 | Mar 18 | Apr 18 | May 18 | Avg |
|------------------------|--------|--------|--------|--------|--------|--------|--------|--------|--------|--------|--------|--------|--------|--------|--------|--------|--------|--------|--------|--------|--------|--------|--------|--------|--------|-------|
| Felony not filed | 357 | 361 | 321 | 345 | 371 | 338 | 308 | 305 | 363 | 386 | 349 | 378 | 396 | 378 | 369 | 374 | 392 | 376 | 394 | 372 | 357 | 315 | 322 | 325 | 340 | 332 |
| Felony pend GJ | 592 | 549 | 610 | 589 | 632 | 671 | 564 | 516 | 583 | 630 | 636 | 651 | 587 | 600 | 687 | 574 | 601 | 728 | 649 | 657 | 709 | 615 | 517 | 608 | 581 | 606 |
| Fel.pend excl.SJF | 1816 | 1903 | 1863 | 1847 | 1812 | 1806 | 1872 | 1884 | 1854 | 1795 | 1697 | 1688 | 1734 | 1757 | 1669 | 1675 | 1639 | 1592 | 1638 | 1639 | 1667 | 1712 | 1705 | 1608 | 1594 | 1,657 |
| State Jail Fel only | 376 | 351 | 318 | 343 | 337 | 374 | 392 | 363 | 329 | 297 | 294 | 303 | 293 | 274 | 248 | 264 | 253 | 227 | 243 | 255 | 251 | 255 | 256 | 237 | 244 | 249 |
| PV-Felony | 267 | 257 | 237 | 243 | 270 | 269 | 242 | 240 | 243 | 241 | 235 | 259 | 246 | 245 | 232 | 207 | 213 | 216 | 215 | 220 | 241 | 243 | 236 | 257 | 263 | 248 |
| TDC over 10yrs | 372 | 356 | 310 | 288 | 309 | 314 | 286 | 288 | 244 | 330 | 332 | 293 | 321 | 350 | 329 | 421 | 505 | 433 | 394 | 353 | 326 | 346 | 365 | 336 | 330 | 341 |
| Bench Warrants | 41 | 45 | 43 | 33 | 36 | 48 | 43 | 36 | 38 | 34 | 25 | 31 | 35 | 34 | 32 | 31 | 35 | 32 | 35 | 41 | 40 | 37 | 44 | 47 | 38 | 41 |
| TDC <10y/appeal | 20 | 17 | 17 | 15 | 11 | 9 | 9 | 9 | 6 | 6 | 7 | 9 | 9 | 11 | 7 | 8 | 11 | 9 | 10 | 9 | 11 | 9 | 7 | 6 | 5 | 8 |
| Sentenced SJF | 90 | 88 | 75 | 61 | 62 | 68 | 74 | 77 | 80 | 93 | 75 | 70 | 95 | 86 | 94 | 84 | 97 | 87 | 78 | 77 | 59 | 64 | 76 | 84 | 84 | 73 |
| Sentd SJF/appeal | 0 | 0 | 0 | 0 | 0 | 0 | 0 | 0 | 0 | 0 | 0 | 1 | 0 | 0 | 0 | 0 | 0 | 0 | 0 | 0 | 0 | 0 | 0 | 0 | 0 | 0 |
| SJF-Serv Co Jail | 65 | 74 | 66 | 64 | 69 | 67 | 60 | 68 | 64 | 85 | 92 | 96 | 106 | 102 | 92 | 101 | 91 | 93 | 82 | 79 | 69 | 75 | 80 | 84 | 84 | 78 |
| Misdnmr not filed | 230 | 209 | 179 | 192 | 191 | 167 | 183 | 159 | 188 | 188 | 170 | 165 | 160 | 181 | 190 | 185 | 193 | 165 | 165 | 133 | 136 | 135 | 129 | 119 | 145 | 133 |
| Misdnmr filed-pend | 215 | 214 | 186 | 206 | 240 | 208 | 209 | 201 | 217 | 213 | 231 | 243 | 215 | 235 | 224 | 214 | 216 | 221 | 188 | 199 | 209 | 198 | 191 | 178 | 181 | 191 |
| PV-Misdnmr | 0 | 0 | 0 | 0 | 0 | 0 | 0 | 0 | 0 | 0 | 0 | 0 | 0 | 0 | 0 | 0 | 0 | 0 | 0 | 0 | 0 | 0 | 0 | 0 | 0 | 0 |
| Serv as Con of Prob. | 60 | 75 | 69 | 64 | 61 | 61 | 63 | 60 | 52 | 56 | 62 | 61 | 66 | 63 | 58 | 60 | 67 | 61 | 59 | 64 | 60 | 54 | 54 | 52 | 52 | 54 |
| Serv Co time/ fines | 62 | 72 | 70 | 79 | 79 | 66 | 62 | 57 | 63 | 91 | 88 | 83 | 70 | 56 | 65 | 66 | 81 | 76 | 68 | 52 | 42 | 66 | 62 | 61 | 62 | 59 |
| Serv fines/ fees only | 0 | 0 | 0 | 0 | 0 | 0 | 0 | 0 | 0 | 0 | 0 | 0 | 0 | 0 | 0 | 0 | 0 | 0 | 0 | 0 | 0 | 0 | 0 | 0 | 0 | 0 |
| Out of Co/State | 61 | 73 | 71 | 78 | 73 | 74 | 65 | 75 | 67 | 75 | 78 | 80 | 80 | 72 | 74 | 71 | 83 | 78 | 77 | 61 | 62 | 71 | 71 | 69 | 74 | 69 |
| Parole Vio. | 204 | 230 | 217 | 234 | 251 | 222 | 250 | 256 | 254 | 268 | 285 | 266 | 268 | 259 | 254 | 284 | 291 | 237 | 216 | 213 | 218 | 239 | 249 | 239 | 235 | 236 |
| SAFPF | 147 | 185 | 219 | 210 | 196 | 212 | 241 | 252 | 249 | 204 | 215 | 200 | 199 | 223 | 225 | 228 | 225 | 191 | 172 | 168 | 146 | 156 | 134 | 99 | 111 | 129 |
| Sp.Prgms | 152 | 173 | 188 | 181 | 189 | 220 | 214 | 192 | 165 | 146 | 155 | 172 | 181 | 188 | 187 | 187 | 192 | 165 | 161 | 173 | 186 | 186 | 168 | 137 | 149 | 165 |
| Incompetent | 97 | 86 | 86 | 76 | 72 | 76 | 88 | 83 | 72 | 68 | 86 | 91 | 99 | 101 | 110 | 130 | 135 | 144 | 149 | 155 | 148 | 148 | 150 | 144 | 153 | 149 |
| US Marshal | 24 | 26 | 27 | 23 | 23 | 21 | 20 | 19 | 19 | 18 | 14 | 12 | 11 | 7 | 7 | 7 | 6 | 7 | 11 | 10 | 9 | 8 | 9 | 8 | 14 | 10 |
| Cntmpt-in Jail | 10 | 14 | 16 | 20 | 19 | 17 | 16 | 10 | 11 | 10 | 13 | 15 | 14 | 15 | 15 | 18 | 14 | 13 | 10 | 8 | 11 | 14 | 13 | 13 | 11 | 12 |
| Furlough | 300 | 300 | 299 | 299 | 299 | 295 | 4 | 0 | 0 | 0 | 0 | 0 | 0 | 0 | 0 | 0 | 0 | 0 | 0 | 0 | 0 | 0 | 0 | 0 | 0 | 0 |
| PEACE Bond | 0 | 0 | 0 | 0 | 0 | 0 | 0 | 0 | 0 | 0 | 0 | 0 | 0 | 0 | 0 | 0 | 0 | 0 | 0 | 0 | 0 | 0 | 0 | 0 | 0 | 0 |
| TYC hold | 0 | 0 | 0 | 0 | 0 | 0 | 1 | 0 | 0 | 0 | 0 | 0 | 0 | 0 | 0 | 0 | 0 | 0 | 0 | 0 | 0 | 0 | 0 | 0 | 0 | 0 |
| Immigration hold | 5 | 6 | 3 | 4 | 4 | 4 | 5 | 4 | 4 | 5 | 5 | 5 | 6 | 6 | 6 | 7 | 5 | 7 | 5 | 5 | 6 | 5 | 6 | 5 | 5 | 5 |
| Class C only | 24 | 26 | 25 | 26 | 27 | 25 | 22 | 21 | 25 | 29 | 29 | 25 | 30 | 33 | 30 | 29 | 28 | 27 | 25 | 23 | 21 | 19 | 16 | 19 | 19 | 19 |
| Contract | 0 | 0 | 0 | 0 | 0 | 0 | 0 | 0 | 0 | 0 | 0 | 0 | 0 | 0 | 0 | 0 | 0 | 0 | 0 | 0 | 0 | 0 | 0 | 1 | 0 | 0 |
| US Military | 0 | 0 | 0 | 0 | 0 | 0 | 0 | 0 | 0 | 0 | 0 | 0 | 0 | 0 | 0 | 0 | 0 | 0 | 0 | 0 | 0 | 0 | 0 | 0 | 0 | 0 |
| Default | 52 | 49 | 37 | 41 | 42 | 41 | 44 | 39 | 45 | 50 | 47 | 49 | 48 | 47 | 43 | 43 | 40 | 42 | 38 | 39 | 39 | 37 | 42 | 42 | 40 | 40 |
| Furlough added | 5641 | 5738 | 5552 | 5545 | 5673 | 5674 | 5339 | 5217 | 5234 | 5316 | 5221 | 5248 | 5268 | 5320 | 5247 | 5269 | 5412 | 5226 | 5081 | 5002 | 5023 | 5006 | 4902 | 4777 | 4812 | 4,904 |
| Jail Population Actual | 5341 | 5438 | 5352 | 5246 | 5374 | 5380 | 5335 | 5217 | 5234 | 5316 | 5221 | 5247 | 5268 | 5320 | 5247 | 5269 | 5412 | 5226 | 5081 | 5002 | 5023 | 5006 | 4902 | 4777 | 4812 | 4,904 |
| INTAKES | 194 | 197 | 158 | 190 | 184 | 168 | 170 | 155 | 180 | 194 | 190 | 184 | 190 | 185 | 181 | 187 | 182 | 209 | 173 | 155 | 173 | 170 | 176 | 180 | 181 | 176 |
| RELEASES | 190 | 202 | 166 | 182 | 184 | 175 | 173 | 163 | 171 | 199 | 193 | 181 | 187 | 192 | 178 | 183 | 180 | 221 | 171 | 162 | 167 | 175 | 183 | 176 | 182 | 177 |
| VARIANCE | 5 | -4.7 | -8 | -7.45 | 0 | 8 | -3 | 6 | 9 | -4 | -3 | 4 | 4 | -7 | -3 | 4 | 2 | 13 | 2 | 6 | 6 | -5 | -7 | 4 | -1 | -1 |

| BUCKET NAMES | MAY 2017 vs 2018 | MAY 17 | MAY 18 | MAR 18 | APR 18 | MAY 18 | APR vs MAY |
|-----------------------------|---------------------|-------------|-------------|-------------|-------------|-------------|---------------|
| Variance | | | | | | | |
| SPECIAL FOCUS | | | | | | | |
| Fel.pend excl.SJF | -140 | 1734 | 1594 | 1705 | 1608 | 1594 | -14 |
| State Jail Felony | -49 | 293 | 244 | 256 | 237 | 244 | 7 |
| PV-Felony | 17 | 246 | 263 | 236 | 257 | 263 | 6 |
| Felony pend Grand Jury | -6 | 587 | 581 | 517 | 608 | 581 | -27 |
| Parole Violator only | -33 | 268 | 235 | 249 | 239 | 235 | -4 |
| Special Programs | -32 | 181 | 149 | 168 | 137 | 149 | 12 |
| TRENDING UP | | | | | | | |
| SAFPF | -88 | 199 | 111 | 134 | 99 | 111 | 12 |
| Incompetent | 54 | 99 | 153 | 150 | 144 | 153 | 9 |
| US Marshal | 3 | 11 | 14 | 9 | 8 | 14 | 6 |
| Serving County Time | -8 | 70 | 62 | 62 | 61 | 62 | 1 |
| Felony Not Filed | -56 | 396 | 340 | 322 | 325 | 340 | 15 |
| TRENDING DOWN | | | | | | | |
| SJF-Serv Co.Jail (12.44a) | -22 | 106 | 84 | 80 | 84 | 84 | 0 |
| Sentenced to SJF | -11 | 95 | 84 | 76 | 84 | 84 | 0 |
| Misdemeanors pending | -34 | 215 | 181 | 191 | 178 | 181 | 3 |
| Contempt in Jail | -3 | 14 | 11 | 13 | 13 | 11 | -2 |
| Serv as Cond of Prob. | -14 | 66 | 52 | 54 | 52 | 52 | 0 |
| TDC<10yr/appeal | -4 | 9 | 5 | 7 | 6 | 5 | -1 |
| Class C Misd. only | -11 | 30 | 19 | 16 | 19 | 19 | 0 |
| Out of Co/State | -6 | 80 | 74 | 71 | 69 | 74 | 5 |
| Bench Warrants | 3 | 35 | 38 | 44 | 47 | 38 | -9 |
| STABLE | | | | | | | |
| Immigration | -1 | 6 | 5 | 6 | 5 | 5 | 0 |
| TYC | 0 | 0 | 0 | 0 | 0 | 0 | 0 |
| Jail Population Avg. | -456 | 5268 | 4812 | 4902 | 4777 | 4812 | 35 |

| Time Period | Cost per Day | Days | Total Cost Saved |
|----------------|--------------|----------------|------------------------|
| 9/09 | \$55.60 | 393 | \$ 21,850.80 |
| 10/09 to 9/10 | \$48.49 | 7,589 | \$ 367,990.61 |
| 10/10 to 09/11 | \$57.49 | 16,277 | \$ 934,212.50 |
| 10/11 to 09/12 | \$53.13 | 23,536 | \$ 1,250,467.68 |
| 10/12 to 09/13 | \$56.29 | 30,368 | \$ 1,709,414.72 |
| 10/13 to 9/14 | \$62.46 | 41,130 | \$ 2,568,979.80 |
| 10/14 to 9/15 | \$63.11 | 40,706 | \$ 2,568,955.66 |
| 10/15 to 9/16 | \$69.38 | 40,517 | \$ 2,811,069.46 |
| 10/16 to 9/17 | \$71.08 | 44,636 | \$ 3,209,845.88 |
| 10/17 to 5/18 | \$55.36 | 32,939 | \$ 1,822,728.00 |
| | TOTAL | 278,091 | \$17,214,530.11 |

| Time Period | ASP | Bond | Total clients served during month | Total jail bed days saved | County pay clients | Clients who paid something | Clients that didn't pay (not county paid) | Fees collected by Sentinel |
|-------------|-----|------|-----------------------------------|---------------------------|--------------------|----------------------------|---|----------------------------|
| 10/15 | 43 | 115 | 158 | 3,613 | 37 | 103 | 18 | \$ 22,207.40 |
| 11/15 | 35 | 113 | 148 | 3,407 | 25 | 108 | 15 | \$ 29,962.00 |
| 12/15 | 25 | 121 | 146 | 3,594 | 31 | 98 | 17 | \$ 30,779.10 |
| 1/16 | 26 | 120 | 146 | 3,491 | 30 | 103 | 13 | \$ 28,830.58 |
| 2/16 | 24 | 122 | 146 | 3,272 | 27 | 104 | 15 | \$ 26,118.00 |
| 3/16 | 26 | 118 | 144 | 3,308 | 29 | 103 | 12 | \$ 27,815.50 |
| 4/16 | 23 | 112 | 135 | 3,125 | 24 | 99 | 12 | \$ 23,607.55 |
| 5/16 | 24 | 118 | 142 | 3,277 | 25 | 103 | 14 | \$ 24,861.00 |
| 6/16 | 21 | 124 | 145 | 3,029 | 29 | 93 | 23 | \$ 21,912.25 |
| 7/16 | 14 | 111 | 125 | 3,221 | 30 | 86 | 9 | \$ 18,764.50 |
| 8/16 | 14 | 129 | 143 | 3,512 | 39 | 90 | 14 | \$ 23,364.04 |
| 9/16 | 19 | 123 | 142 | 3,668 | 30 | 96 | 16 | \$ 24,272.65 |
| 10/16 | 18 | 119 | 137 | 3,639 | 26 | 91 | 20 | \$ 21,270.58 |
| 11/16 | 11 | 131 | 142 | 3,459 | 27 | 86 | 29 | \$ 18,652.07 |
| 12/16 | 10 | 124 | 134 | 3,626 | 13 | 89 | 32 | \$ 19,793.99 |
| 1/17 | 21 | 136 | 157 | 3,755 | 26 | 94 | 37 | \$ 21,673.05 |
| 2/17 | 30 | 131 | 161 | 3,512 | 28 | 96 | 37 | \$ 21,789.00 |
| 3/17 | 23 | 150 | 173 | 4,095 | 31 | 99 | 43 | \$ 25,247.00 |
| 4/17 | 15 | 148 | 163 | 3,842 | 30 | 91 | 42 | \$ 18,475.00 |
| 5/17 | 11 | 151 | 162 | 3,938 | 38 | 83 | 41 | \$ 18,190.27 |
| 6/17 | 14 | 149 | 163 | 3,619 | 42 | 80 | 41 | \$ 18,550.23 |
| 7/17 | 19 | 136 | 155 | 3,634 | 35 | 90 | 30 | \$ 20,944.00 |
| 8/17 | 14 | 144 | 158 | 3,706 | 39 | 80 | 39 | \$ 19,843.25 |
| 9/17 | 10 | 145 | 155 | 3,811 | 46 | 74 | 35 | \$ 16,908.00 |
| 10/17 | 16 | 155 | 171 | 4,080 | 48 | 81 | 42 | \$ 17,721.00 |
| 11/17 | 12 | 149 | 161 | 3,675 | 44 | 60 | 57 | \$ 12,855.00 |
| 12/17 | 12 | 129 | 141 | 3,569 | 41 | 62 | 38 | \$ 13,978.00 |
| 1/18 | 12 | 135 | 147 | 3,424 | 51 | 57 | 39 | \$ 13,858.50 |
| 2/18 | 12 | 147 | 159 | 3,342 | 63 | 58 | 38 | \$ 12,485.76 |
| 3/18 | 18 | 167 | 185 | 4,342 | 86 | 69 | 30 | \$ 16,461.24 |
| 4/18 | 21 | 193 | 214 | 4,776 | 94 | 74 | 46 | \$ 15,795.00 |
| 5/18 | 21 | 213 | 234 | 5,731 | 112 | 77 | 45 | \$ 16,666.00 |

MAY 2018

CASELOAD INFORMATION

| | 5/18 ASP | 5/18 Bond | 5/18 Ch. Sup | 5/18 TOTAL | ASP TOTAL | Bond TOTAL | Ch. Sup TOTAL | Total 9-01-09 - 05-31-18 |
|--|-------------|--------------|-----------------|---------------|--------------|---------------|------------------|-----------------------------|
| Beginning Client Count | 8 | 162 | 0 | 170 | 3 | 3 | 9(5/13) | 15 |
| Total Clients That Started The Program | 13 | 51 | 0 | 64 | 1,822 | 1,850 | 89 | 3,761 |
| Total Cases Closed | 11 | 43 | 0 | 54 | 1,815 | 1,683 | 98 | 3,596 |
| Closed Successfully | 11 | 25 | 0 | 36 | 1,781 | 1,075 | 74 | 2,930 |
| Closed Unsuccessfully | 0 | 18 | 0 | 18 | 34 | 608 | 24 | 666 |
| Total Clients at End of Month | 10 | 170 | 0 | 180 | | | | |

PROGRAM DISTRIBUTION FOR CLOSED CASES

| | ASP | Bond | Ch. Sup | TOTAL | ASP | Bond | Ch. Sup | TOTAL |
|------------------------------------|-----|------|---------|-------|-------|-------|---------|-------|
| Full House Arrest | 2 | 11 | 0 | 13 | 212 | 193 | 14 | 419 |
| House Arrest w/work/school release | 9 | 0 | 0 | 9 | 1,548 | 0 | 1 | 1,549 |
| GPS w/work/school release | 0 | 32 | 0 | 32 | 55 | 1,490 | 83 | 1,628 |
| B.A.R.T-Alcohol Monitor | 2 | 0 | 0 | 2 | 700 | 78 | 0 | 778 |

CASELOAD NON-COMPLIANCE INFORMATION

| | ASP | Bond | Ch. Sup | TOTAL | ASP | Bond | Ch. Sup | TOTAL |
|---|-----|------|---------|-------|-----|-------|---------|-------|
| Violation Reports Submitted | 0 | 37 | 0 | 37 | 85 | 2,049 | 46 | 2,180 |
| Unsuccessful Removal from Program | 0 | 18 | 0 | 18 | 34 | 608 | 24 | 666 |
| Failed to Start Program/Warrant Issued | 0 | 0 | 0 | 0 | 12 | 18 | 1 | 31 |
| Interviewed but Rejected for Program | 0 | 0 | 0 | 0 | 3 | 33 | 2 | 38 |
| New Offenses Committed while in Program | 0 | 3 | 0 | 3 | 4 | 38 | 5 | 47 |

CASELOAD ACTIVITIES

| | 05/18 | TOTAL |
|--|-------|--------|
| Orientation Interviews Conducted | 64 | 3,776 |
| Computer Checks for Warrants & New Offenses | 734 | 14,298 |
| Telephone Contacts with Clients | 1,346 | 59,293 |
| Telephone Contacts with Non Clients | 234 | 14,999 |
| In Person Contacts with Clients-Office & Field | 780 | 39,857 |
| In Person Contacts with Non Clients-Office and Field | 253 | 7,487 |

DALLAS COUNTY FUNDS SAVED

| | 5/18 | Total 9-01-09 - 05-31-18 |
|--------------------------------------|---------------------|--------------------------|
| ELM Days Served/Jail Bed Days Saved | 5,731 | 278,091 |
| Cost of Jail Bed Per Day | \$ 55.36 | SEE ADDENDUM |
| TOTAL JAIL BED EXPENSES SAVED | \$317,268.16 | \$ 17,214,530.11 |

PRETRIAL RELEASE SERVICES MONTHLY REPORT

| | JUN 17 | JUL 17 | AUG 17 | SEPT 17 | OCT 17 | NOV 17 | DEC 17 | JAN 18 | FEB 18 | MAR 18 | APR 18 | MAY 18 | 12mo AVG |
|-----------------------------|---------|---------|---------|---------|---------|---------|---------|---------|---------|---------|---------|---------|-------------|
| AVG BOOKINS per day | 185 | 181 | 187 | 182 | 177 | 176 | 155 | 173 | 170 | 176 | 180 | 181 | 177 |
| Interviews | 119 | 123 | 166 | 132 | 127 | 153 | 97 | 130 | 100 | 161 | 55 | 87 | 121 |
| Cr. History reviewed | 765 | 453 | 455 | 354 | 433 | 375 | 316 | 450 | 322 | 381 | 297 | 376 | 415 |
| Bonds written | 90 | 85 | 99 | 83 | 70 | 88 | 58 | 72 | 52 | 57 | 24 | 46 | 69 |
| AVG BONDS per day | 4.9 | 4.3 | 4.3 | 4.2 | 3.1 | 4.4 | 3.5 | 3.4 | 2.6 | 2.6 | 1.1 | 2.1 | 3.38 |
| Bonds (collected) | 52 | 56 | 72 | 70 | 54 | 72 | 40 | 53 | 42 | 46 | 15 | 35 | 51 |
| Bonds (waived) | 38 | 29 | 27 | 13 | 16 | 16 | 18 | 19 | 10 | 11 | 9 | 11 | 18 |
| Bonds TOTAL | 90 | 85 | 99 | 83 | 70 | 88 | 58 | 72 | 52 | 57 | 24 | 46 | 69 |
| FEES (collected) | \$2,015 | \$2,545 | \$2,950 | \$2,700 | \$1,885 | \$3,025 | \$1,375 | \$2,035 | \$1,440 | \$1,985 | \$630 | \$1,225 | \$1,984 |
| FEES (waived) | \$1,745 | \$1,295 | \$1,035 | \$275 | \$530 | \$460 | \$1,220 | \$1,225 | \$300 | \$385 | \$585 | \$340 | \$783 |
| FEES TOTAL | \$3,760 | \$3,840 | \$3,985 | \$2,975 | \$2,415 | \$3,485 | \$2,595 | \$3,260 | \$1,740 | \$2,370 | \$1,215 | \$1,565 | \$2,767 |

| AVERAGES - LATEST HISTORICAL STATISTICAL DATA | |
|---|----------|
| | BKIN AVG |
| 2008 AVERAGE | 271 |
| 2009 AVERAGE | 264 |
| 2010 AVERAGE | 257 |
| 2011 AVERAGE | 238 |
| 2012 AVERAGE | 231 |
| 2013 AVERAGE | 222 |
| 2014 AVERAGE | 204 |
| 2015 AVERAGE | 195 |
| 2016 AVERAGE | 179 |
| 2017 AVERAGE | 182 |
| Jan-18 | 173 |
| Feb-18 | 170 |
| Mar-18 | 176 |
| Apr-18 | 180 |
| May-18 | 181 |
| 2018 AVERAGE | 176 |

| PRETRIAL RELEASE SERVICES ~ YEARLY AVERAGES | | | |
|---|----------|----------|----------|
| | PTR Bond | Jail Pop | Bkin Avg |
| 2007 | 14 | 6288 | 249 |
| 2008 | 13 | 6125 | 271 |
| 2009 | 11 | 6165 | 264 |
| 2010 | 10 | 6818 | 257 |
| 2011 | 9 | 6430 | 238 |
| 2012 | 9 | 6310 | 231 |
| 2013 | 11 | 6015 | 222 |
| 2014 | 10 | 6144 | 204 |
| 2015 | 9 | 5685 | 195 |
| 2016 | 6 | 5350 | 179 |
| 2017 | 4 | 5237 | 182 |

**Department of Criminal Justice
FY2018 SAMHSA Grant Project**

| | Oct. | Nov. | Dec. | Jan. | Feb. | Mar. | Apr. | May | June | July | Aug. | Sep. | FY2018 Total | FY2017 Total | FY2016 Total |
|---|------|------|------|------|------|------|------|-----|------|------|------|------|-----------------|-----------------|-----------------|
| Number of New Admissions | 4 | 2 | 7 | 2 | 2 | 6 | 3 | 5 | | | | | 31 | 44 | 33 |
| Number of Successful Completions | 3 | 0 | 1 | 3 | 5 | 1 | 2 | 4 | | | | | 19 | 36 | 24 |
| Number of Unsuccessful Completions | 0 | 0 | 0 | 3 | 0 | 3 | 1 | 1 | | | | | 8 | 10 | 9 |
| Average Days in Jail from Referral to Admission | 12 | 9 | 6 | 5 | 8 | 6 | 6 | 9 | | | | | 7 | 7 | 4 |
| Number of New Admissions on ELM | 2 | 2 | 3 | 2 | 1 | 4 | 1 | 4 | | | | | 19 | 37 | 12 |
| Program Referral Follow-Ups by Type (running total per grant year) | | | | | | | | | | | | | | | |
| Court Program Graduate | | | | | | | | | | | | | 0 | 2 | 7 |
| Active In Court Program | | | | | | | | | | | | | 10 | 5 | 2 |
| Active In Treatment at Nexus | | | | | | | | | | | | | 6 | 0 | 0 |
| In Jail | | | | | | | | | | | | | 3 | 3 | 3 |
| Re-Arrested and Released to Community | | | | | | | | | | | | | 1 | 14 | 12 |
| Re-Arrested and Released to Further Treatment | | | | | | | | | | | | | 3 | 6 | 0 |
| Released to TDCJ or State Jail | | | | | | | | | | | | | 1 | 6 | 5 |
| Active Warrant | | | | | | | | | | | | | 6 | 7 | 3 |

| Month | Year | Initial MH # | Eligible | # Signed orders | Presented | Denied | Other | Granted | Misdemeanor | Felony |
|---------------|------|--------------|------------|-----------------|------------|-----------|----------|------------|-------------|------------|
| January | 2018 | 1284 | 162 | 211 | 67 | 6 | 3 | 58 | 38 | 44 |
| February | 2018 | 1262 | 150 | 187 | 51 | 8 | 3 | 40 | 19 | 37 |
| March | 2018 | 1271 | 175 | 235 | 42 | 13 | 1 | 28 | 18 | 20 |
| April | 2018 | 1384 | 181 | 234 | 53 | 6 | 1 | 46 | 25 | 38 |
| May | 2018 | 1457 | 243 | 323 | 84 | 14 | 0 | 70 | 47 | 44 |
| TOTALS | | 6658 | 911 | 1190 | 297 | 47 | 8 | 242 | 147 | 183 |

Yellow = Court Proceedings

Other = Granted MH Bond in court released by other means prior to PR bond posting

Misdemeanor and Felony totals calculated for individuals APPROVED & RELEASED on MH Bond

2017 TOTALS

| | | | | | | | | | |
|-----------|-------|------|------|-----|----|----|-----|-----|-----|
| APR - DEC | 10794 | 1568 | 1609 | 449 | 36 | 15 | 398 | 296 | 277 |
|-----------|-------|------|------|-----|----|----|-----|-----|-----|

Note:

April-October 2017: Misdemeanor and Felony totals included all cases presented for bond (approved and denied)

November 2017-Current: Misdemeanor and Felony totals included only cases APPROVED for bond

April 2017 - Present

| | | | | | | | | | |
|-----------|-------|------|------|-----|----|----|-----|-----|-----|
| APR - DEC | 17452 | 2479 | 2799 | 746 | 83 | 23 | 640 | 443 | 460 |
|-----------|-------|------|------|-----|----|----|-----|-----|-----|

Levels

| Month | Year | Level 1 | Level 2 | Level 3 |
|--------------|------|-----------|------------|-----------|
| January | 2018 | 13 | 30 | 15 |
| February | 2018 | 6 | 22 | 12 |
| March | 2018 | 5 | 11 | 12 |
| April | 2018 | 5 | 30 | 11 |
| May | 2018 | 16 | 44 | 10 |
| TOTAL | | 45 | 137 | 60 |

Total number of levels approved, does not account for discharged/closed out files.

Discharges

| Month | Year | Successful | Unsuccessful | Other |
|--------------|------|------------|--------------|----------|
| January | 2018 | 20 | 25 | 0 |
| February | 2018 | 15 | 24 | 0 |
| March | 2018 | 15 | 22 | 0 |
| April | 2018 | 21 | 30 | 0 |
| May | 2018 | 15 | 25 | 1 |
| TOTAL | | 86 | 126 | 1 |

April 2017-Present: Total Approved 640

April 2017-Present: Total Discharges 367

****Successful-141 (38.4%); Unsuccessful-223 (60.7%); Neutral-2 (0.008%)**

273 - Active Cases 5/30/2018



TEXAS DEPARTMENT OF PUBLIC SAFETY

CRIME RECORDS SERVICE

**County Combined Completeness Percentage
for DALLAS County
as of 06/04/2018**

| Reported Year | Adult | | | | | Juvenile | | | | |
|---------------|------------------------|---------------------------------|----------------------------|----------------|-------------------------|------------------------|---------------------------------|----------------------------|----------------|-------------------------|
| | Total Charges Reported | Charges Disposed by Prosecutors | Charges Disposed by Courts | Total Disposed | Completeness Percentage | Total Charges Reported | Charges Disposed by Prosecutors | Charges Disposed by Courts | Total Disposed | Completeness Percentage |
| 2012 | 61,348 | 1,892 | 56,052 | 57,944 | 94% | 3,544 | 214 | 3,199 | 3,413 | 96% |
| 2013 | 61,000 | 1,910 | 54,706 | 56,616 | 92% | 4,239 | 286 | 3,815 | 4,101 | 96% |
| 2014 | 58,992 | 2,207 | 51,373 | 53,580 | 90% | 3,899 | 562 | 3,127 | 3,689 | 94% |
| 2015 | 57,248 | 2,132 | 48,857 | 50,989 | 89% | 3,726 | 570 | 2,688 | 3,258 | 87% |
| 2016 | 58,413 | 2,800 | 45,981 | 48,781 | 83% | 3,177 | 541 | 1,846 | 2,387 | 75% |
| Total | 297,001 | 10,941 | 256,969 | 267,910 | 90% | 18,585 | 2,173 | 14,675 | 16,848 | 90% |