



DALLAS COUNTY
Criminal Justice Department

Behavioral Health Steering Committee

Thursday, August 20, 2015

Agenda

1. Welcome and Call to Order
2. Review/Approval of Minutes 1 - 3
3. NADCP Conference Report *Lynn Richardson*
4. Stepping Up/ Smart Justice Report *Mike Laughlin* 4 – 7
5. 530 Sub Committee *Keta Dickerson* 8 – 14
6. BHLT & CSP Update *Charlene Randolph* 15- 21
7. Jail Reports
 - Pregnant Patients *Shenna Oriabure* 22
 - Hospital Movement *Brandy Coty* 23
 - Northstar Matches *Duane Steele* 24
 - Homeless Semi-Annual Report *Christina Gonzales* 25-28
8. Public Defenders Report *Lynn Richardson* 29
9. Provider Reports
 - Metrocare *Sherri Lockhart* 30
 - The Bridge *Jay Meaders* 31
 - IPS Reports *Enrique Morris* 32-34
10. Outpatient Competency *Brandy Coty* 35
11. Problem Solving Courts *Keta Dickerson* 36
12. Specialty Courts CSCD *Serena McNair* 37-41
13. Announcements
 - Judge Mays 42
14. Adjourn



Behavioral Health Steering Committee

Thursday May 21, 2015

Meeting called to order at 8:30am by Ron Stretcher.

Ron Stretcher called the meeting to order and asked for attendees to introduce themselves. Judge Wade asked for any adjustments to the minutes.

BHLT & CSP Update

Charlene Randolph, reported services provided by Transicare ended with 65 clients, serving a total of 89 unduplicated. CSP has also recently started tracking connecting persons coming out of Terrell State hospital to services within 7 days and 30 days. Currently they are at 75% within 7 days, and 82% within 30 days. Reporting on the number of total unique encounters (goal for match funding) for CSP at the end of March is 553 *(pgs 5, of May packet)*

Jail Reports

Pregnant Women in Jail- Shenna Oriabure reported there are currently 27 pregnant women in jail; 9 sentenced, 13 have upcoming court dates, 1 waiting to go to the hospital, and 4 without court dates. *(pg 10, of May packet)*

Northstar Match- Duane Steele reported that for the month of April there were a total of 6530 inmates booked into jail, out of that 1,573 (25%) had a Northstar match. Looking at information for people that have been booked into jail more than once this year, there are 2 inmates that have been booked into jail 7 times or more this year. *(pg 11, of May packet)*

Northstar High Utilizers -Lynn Richardson asked for the possibility of being able to identify the attorneys assigned to high Northstar utilizers. In an effort to target the high utilizers Ms. Richardson stated that she would talk with the court coordinators to ensure the attorneys are knowledgeable of the services such as Transicare or Adapt in order to provide wrap around services. Judge Wade agreed and included the DA's office could also benefit from knowing this information as well to better identify and work with inmates that are in need of services. Currently the JIMI system is the mechanism used to identify high utilizers. There is some concern on how information can be distributed among the different departments without violating HIPPA or attorney client privilege. Ron Stretcher reported that Chong Choe in the Civil District Attorney's office is currently working with the Criminal Justice Department on HIPPA and other privacy and security matters. While Ms. Richardson reports there are legal statutes that address competency, those statutes do not cover mental health cases and how they are different, agreeing that there are concerns about how to share information and there is a need to work together to create a solution that can identify high utilizers and provide the correct services. Charlene Randolph will work to schedule a meeting with the Public Defender's office, District Attorneys' office, and Transicare and Adapt to work on a solution. *(pg 11, of May packet)*

Problem Solving Courts

Specialty Court Census:

Lynn Richardson registered an objection to discussing the courts during the BHSC when the Judge presiding over the court has not had an opportunity to attend and be a part of the discussions during the

meeting. Ms. Richardson stated going forward she will speak to the judges individually and provide them with the opportunity to engage in the discussions at the BHSC. Ron Stretcher, directed members to page 13 in the packet for a review of the TACOEMI caseworkers in each specialty court.

- ATLAS there is 1 case manager with a max caseload of 20-25 clients; currently there are 17 there is a need for an additional 3-4 clients.
- Post-DDRTC has 1.5 case managers with a max caseload of 30-37 clients; currently there are 32 clients.
- STAC has 1.5 case managers with a max caseload of 30-37 clients; currently there are 29.
- MHJD has 1.5 case managers with a max caseload of 30-37 clients; currently there are 21 clients.
- PRIDE has a .5 case manager with a max caseload of 10-12; currently there are 4 clients, with PRIDE they can only work with the felony prostitution charges.

Sherri Lockhart stated that over the past six months it has been really hard to get any of the caseloads at capacity. No barriers or limitations for filling the Specialty Court caseloads have been observed, this is also true for the probation ICM caseloads as well. It was noted there were some differences between the numbers being reported in MHJD by the probation officer and the numbers reported by Metrocare. In order to ensure the numbers being reported are consistent going forward there will be a comparison by the probation officer in MHJD and Sherri Lockhart of the clients that are in MHJD for Metrocare. On the dedicated probation ICM, there are 5 case managers for this program and there is one vacancy and a max capacity of 80-100 clients Dr. Johansson-Love reported that the caseload is something that Mr. Arnold of CSCD and Dr. Syed are working on streamlining the referral process. Dr. Syed reports that one problem is a lack of communication. Judge Wade asked that going forward every Monday Metrocare send an e-mail to the judge and the probation officer letting the courts know the current needs of Metrocare in order to fill the case loads. *(pg 13, of May packet)*

Public Defender Report

Lynn Richardson reported the budget department is reviewing providing an additional .5 public defender for the mental health court. Reviewing the numbers there has been an increase in hospitals and cases and an additional .5 of a public defender is much needed. *(pg 12, of May packet)*

SPN Reports

The Bridge - Jay Meaders reported the Bridge is entering historically the busiest time of the year. They are currently working to integrate with Metrocare and Lifenet, as Metrocare was once housed at the Bridge the transition is going smooth. Modifications have been made in capturing the number of jail releases, thus providing a more accurate synopsis of the people from jail. He also notes that it may look as if there are fewer beds in the emergency shelter, however what is happening are many clients are maintaining their beds longer. He continued to stress the importance of sending referrals over as early as possible to assist in placing them in a bed and getting wrap around services for them. *(pg 14, of May packet)*

IPS - Enrique Morris reported they have recently had the highest number of admissions for Specialty Courts in the last nine months. In the past month, the highest discharge rate was from STAC men and the highest admission rate was from IIP. There was a successful discharge rate for the month of April was 51%, which is higher than the national average according to SAMSHA. For the month of April the following

numbers apply for the Specialty Court clients in IPS services; phase advancement 57%; phase retention 31%, and elevation of care 12%. (pg 15, of May packet)

DIVERT - Keta Dickerson reported that DIVERT has started taking referrals again. They are currently at 161 participants in the program and they have increased the program capacity to 165. (pg 19, of May packet)

Probation-Serena McNair reported the following start and end numbers for the Probation Department; ATLAS started with 26 and ended with 28, DDC started with 19 and ended with 22, MH started with 51 and ended with 52, STAC started with 13 and ended with 16, and STAR started with 15 and ended with 17 for a total of 135. Serena reported that the numbers for STAC look smaller because they are only reporting the mental health case load for that number. (pg 20, of May packet)

530 Sub-Committee

Keta Dickerson reported committee met last Wednesday at the time the ending balance is a total of \$127,364.34. Dr. Johansson-Love gave an update on the status of the studies with UTD, reporting they are currently working on DIVERT program and getting data from the officers. Dr. Johansson-Love, also reported that Judge Hoffman is working on a study being completed by UTA and there will be a need in the future to evaluate utilizing the PRIDE court for a study. The following requests were approved by the sub-committee and are being presented to BHSC for final approval.

- STAC – Incentive Request
Judge Lela Mays presented a request to utilize \$875.00 to pay for the May graduation.
- MH Specialty Court Coordinator – Training Request
Christina Gonzales presented a request to utilize \$100.00 to pay the registration to attend the Mental Health Care & Diversity training workshop being held on May 30th, 2015.
- DIVERT – Incentives Request
Keta Dickerson presented a request to utilize \$2,000.00 to pay for incentives and graduations for the STAC court with the possibility of approving additional funds later in the year.

Ron Stretcher made a motion to approve all three requests, Kendall McKimmey seconded the motion and it was approved by the committee.

Announcements

- Keta Dickerson and Lynn Richardson have created resolutions for National Drug Court Month. They will be read at Commissioners Court on May 26th, 2015 at 9:00am.
- Mike Laughlin, from Federal Parole will join the Criminal Justice Department as the Mental Health Jail Diversion Coordinator on June 1, 2015. He will fill the position previously held by Patti Scali.
- Crystal Garland at Metrocare/Lifenet has been promoted and she is now the Clinical Manager II for all jail diversion cases.

Adjourn

The meeting was adjourned at 9:55am by Judge Wade.



DALLAS COUNTY BEHAVIORAL HEALTH LEADERSHIP TEAM

MEMORANDUM

Date: August 13, 2015

To: Dallas County BHLT

From: Ron Stretcher

Re: Coordination of Planning Activities and Additional Staff Resources

Background of Issue

There are three different activities underway in our community that have the potential to positively impact access to services leading to a reduction in our jail population: the NorthSTAR system transition, the Stepping Up initiative, and the Caruth Smart Justice Planning Grant. BHLT members will be very involved in these planning activities. The purpose of this briefing is to provide details on these planning activities and request the BHLT's endorsement of a request to Commissioners Court to add staff resources funded by the Caruth Smart Justice Planning Grant.

Operational Impact

The attached Planning Activities Coordination Grid provides an overview of the three planning activities and how they are related.

NorthSTAR Transition

The BHLT has followed the NorthSTAR transition through the 2015 Legislative Session and was briefed in detail about the status on June 10, 2015 as part of a request for matching funds for the North Texas Behavioral Health Authority (NTBHA) to apply for grant funds. The NorthSTAR transition will have the biggest impact on Dallas County and must remain a priority over the next few months. Services under the new NorthSTAR system will begin January 1, 2017. A final implementation plan is under development and scheduled for approval at the September NTBHA Board Meeting. At this time, no specific funding is available for this transition planning.

Staff with the Department of Health Services (DSHS) is exploring possible funding options within the upcoming fiscal year's budget. There are regular meetings with DSHS on the transition, but no formal technical assistance is available.

Stepping Up

Commissioners Court approved the resolution for Dallas County to join the Stepping Up initiative on July 7. The resolution has been presented to the National Association of Counties (NACo) and Dallas was noted as a participant at the recent NACo conference. Participants will attend a conference in the Spring of 2016 to share progress. Focused funding opportunities are expected to be announced at this conference. There is no funding attached to Stepping Up at this time. There will be limited technical assistance, primarily through webinars and information sharing. The Council of State Governments Justice Center is a lead partner in this project. As they will also be part of the Caruth Smart Justice Planning, there will be some level of support for Stepping Up.

Caruth Smart Justice Planning Grant

The W.W. Caruth, Jr. Foundation (Caruth) has awarded a grant to the Meadows Mental Health Policy Institute to coordinate a focused planning process with Dallas County and Parkland to better identify, assess, and divert persons with mental illness from the justice system. An executive summary of the project is attached. The initial kick-off meeting was held July 27, 2015. A report will be submitted by 12-31-2015 that provides the results of the initial assessment and specific projects to begin implementing. The planning work will lead to a request to Caruth for additional funding to implement the specific projects identified in the initial planning phase. In addition to Meadows, the Council of State Governments Justice Center is a key technical assistance provider for this project.

The Smart Justice Grant includes an allocation of \$150,000 to Dallas County for a staff resource to manage this planning process and a data analyst to coordinate the collection and reporting of local data. Staff recommends that this funding be used to hire a project/policy analyst to serve as our project manager for Smart Justice and to also hire a data analyst, with the pay grade to be determined by our HR staff. If the combined salary and fringe costs for these two positions exceed the grant funding, additional costs can be covered from the Crisis Services Project funded by the 1115 Medicaid Waiver. Continued funding for these positions after the initial year will be included in the request to Caruth for additional funding to implement projects.

Recommendation

It is recommended that the Dallas County Behavioral Health Leadership Team endorse the staff recommendation to Commissioners Court to add a project/policy analyst and a data analyst to lead the current planning activities.

Meadows Mental Health Policy Institute

Caruth Smart Justice Planning Grant

Executive Summary

The goal of the smart justice planning grant is to engage local partners in developing plans to transform the Dallas justice system to better identify, assess, and divert persons with mental illness from the justice system. Justice system costs attributable to unmet mental health needs exceed \$47 million annually in Dallas County. The Meadows Mental Health Policy Institute (MMHPI) will partner with the Dallas County Criminal Justice Director's Office, Parkland Hospital, the Caruth Police Institute, the Parkland Center for Clinical Innovation (PCCI), and the Justice Center of the Council of State Governments to develop recommendations for transforming the Dallas justice system to meet this goal. The Institute brings a wealth of experience in partnering with local agencies on smart justice for individuals with mental illness, expertise in analyzing behavioral health data, and skill at conducting collaborative impact work.

This project puts forward a broad, inspiring, and overarching system vision for reform within the Dallas County criminal justice system that rests on the assertion that incarceration primarily due to unmet behavioral health (BH) needs is intolerable and inhumane. No person with BH needs should be unnecessarily criminalized or incarcerated in Dallas County. It's not good for these individuals or for law enforcement, and it does not positively contribute to the ultimate goal of public safety. The intent is to reliably identify those at lower risk to reoffend and with non-violent offenses, and divert them to cost-effective treatment, rather than incarceration, at every point of contact with the criminal justice system which can both reduce the burden on law enforcement and our corrections system, and improve the lives of those diverted.

The theory underlying the work of this project also posits that prevention is the best form of diversion. That is, if individuals in crisis are engaged in services sooner in the process, rather than only after they have been arrested, charged, booked, and/or jailed, then more people will have successful outcomes in the community. Analogously, for those for whom incarceration is unavoidable, rapid identification and transition of those who can be safely diverted from incarceration to community programming that addresses not only their BH needs but also their criminogenic behavior, can both free up resources for higher threats to public safety and reduce recidivism for those diverted.

The work of the planning grant will involve engaging local justice system and health partners in a two-phase process. Phase one will center on a rapid six-month assessment to review available data, develop consensus on needed improvements, prioritize implementation steps, and develop a timeline for implementation that includes "quick wins" to galvanize support and catalyze progress. Phase two will focus on development of business and sustainability plans

Caruth Planning Grant

over a three year period for each of the five main points of intercept where the criminal justice system interacts with people with severe mental illness:

- Intercept 1 – Law Enforcement Contact,
- Intercept 2 – Initial Detention / Court Hearings,
- Intercept 3 – Services and Supports within Jails and Courts,
- Intercept 4 – Reentry Planning, and
- Intercept 5 – Community Corrections post-release.

The outcomes of the project will be:

Short-term Outcomes

- Increased collaboration among key justice stakeholders and key behavioral health partners;
- Increased understanding of gaps and inefficiencies in the justice system for individuals with behavioral health issues; and
- Concrete and specific plans for a uniform community-wide protocol to manage care for people with acute or sub-acute problems related to behavioral health issues.

Intermediate Outcomes

- Police will be better equipped to respond to individuals with mental health issues;
- Law enforcement will be better able to focus on community safety rather than serving as substitute settings for necessary mental health care;
- Additional drop-off locations and ongoing care options for people with mental health needs will be available; and
- Data-driven resources for improved coordination and early intervention will be more widely available and better leveraged.

Long-term Outcomes

- Reduced number of people in jails with mental illness;
- Reduced recidivism for people with mental illness;
- Reduced county expenditures on criminal justice related to unmet mental health needs; and
- Reduced costs in Parkland and other Dallas County emergency rooms with respect to individuals with unmet mental health needs.

The project deliverables at the end of the year will be:

- A Phase One Assessment Report by December 31, 2015 and
- Business and sustainability plans for each intercept by June 30, 2016



Behavioral Health Steering Committee 530 Fund Sub-Committee

Minutes for August 12, 2015

Keta Dickerson called the meeting to order and introductions were made for the group. Lynn Richardson made a motion to accept the minutes from the 530 meeting held on May 13, 2015 as recorded. Judge Kristin Wade seconded the motion; the minutes were accepted as recorded by the group.

530 Fund Balance

An update of the 530 Fund Balance was provided, currently the balance for the Felony account (4020) is \$51,426.17; on the Misdemeanor account (4031) \$98,003.60, for a total of \$149,429.77. It was noted that this is the balance to the end of July and does not include any expenses or credits for the month of August.

530 Requests

Gail Dawson presented a request for STAC Court A & B, for incentives. The request is 100 participants at 25.00 (2,500) for STAC A, and 75 participants at 25.00 (1,875) for STAC B. Judge Mays reports that she is currently using the fish bowl incentive, where 5 names are drawn at the end of the month. This request is strictly for FY15. It was agreed the request would be amended to reflect 500.00 for STAC A, and 100.00 for STAC B, for the remainder of FY 15. Keta Dickerson made a motion to approve the request as amended. The motion was seconded by Lynn Richardson, and the motion carried.

530 Request Form

At the last meeting the sub-committee requested a modification to include requesting information on any additional funding requests from other agencies. Christina Gonzales presented the new 530 Request Form with the modifications as requested. After a brief review of the form Judge Kristin Wade made motion to approve the new 530 Request Form as modified. The motion was seconded by Lynn Richardson, and the motion carried.

530 FY 2016 Budget

In preparation for the upcoming fiscal year a budget was created, projecting the budget through averaging the credits per month for the 4020 and 4031 accounts. The proposed budget is located on page 5 of the packet, under column FY16 proposed, next to the Budget column which contains the approved FY15 budget from Commissioners' Court. Going forward the following changes have been made to the budget line items:

- 1) No change in the MH Specialty Court Coordinator salary.
- 2) A decrease in the amount approved for training from 15,000 to 10,000.
- 3) Incentives and graduation/Drug Court month program remained 15,000.
- 4) A line item for inpatient treatment for pre-adjudication courts was established at 11,000.
- 5) In-patient treatment for CSCD was increased to 32,000.
- 6) A decrease in the amount of office supplies but 800.
- 7) A decrease in bus passes for pre-adjudication courts to 2,500.
- 8) A decrease in bus passes for CSCD to 10,000.

There was confirmation that if there were additional funds at any time the sub-committee would meet and agree to allocate those funds as necessary. Being proactive the committee agreed it will not approve spending funds that are not available, nor will the committee approve requests on projected funds becoming available. This will assist in sustaining the funds in balance throughout the year.

There was a brief review of the amount that was previously approved for incentives. Last year the committee approved 25.00 per participant for incentives. This year it was suggested the committee move to a 15.00 cap per participant for incentives. This will sustain the funds longer; the committee will be in line with the allowable funds a Judge can utilize out of their DDA account for similar items. Judge Kristin Wade made motion to approve the 15.00 cap per participant as the budget allows. The motion was seconded by Lynn Richardson, and the motion carried.

It was noted that there were very little funds for inpatient treatment, at this time there are no additional funds that can be utilized for treatment. Commissioner's court will not allow the sub-committee to approve a budget for projected funds.

Lynn Richardson volunteered to personally go speak to all Specialty Court Judges and request their numbers from CSCD. Judge Kristin Wade made motion to approve the proposed budget as presented, the motion was seconded by Leah Gamble, and the motion carried. After the September 9, 2015 meeting, the proposed budget will get briefed at Commissioners Court and will be in effect on October 10, 2015.

Adjourn

The Sub-Committee will meet again on 09/09/15 @9:30am.

530 Fund FY 15
Balances/Expenditures
Summary Page

Month	Beg. Bal. Misd 4031	Expense	Credit	End Bal	Beg. Bal Fel 4020	Expense	Credit	End Bal
Oct	\$144,700.15	\$23,612.53	\$8,424.62	\$129,512.24	\$61,572.46	\$17,286.00	\$3,854.01	\$48,140.47
Nov	\$129,512.24	\$5,243.66	\$6,982.21	\$131,250.79	\$48,140.47	\$0.00	\$3,763.56	\$51,904.03
Dec	\$131,250.79	\$5,818.67	\$8,642.37	\$134,074.49	\$51,904.03	\$0.00	\$4,037.01	\$55,941.04
Jan	\$134,074.49	\$8,609.03	\$7,362.34	\$132,827.80	\$55,941.04	\$2,965.00	\$3,264.81	\$56,240.85
Feb	\$132,827.80	\$30,181.18	\$8,782.76	\$111,429.38	\$56,240.85	\$2,055.00	\$4,750.36	\$58,936.21
Mar	\$111,429.39	\$5,257.21	\$9,823.22	\$115,995.40	\$58,936.21	\$627.40	\$5,126.30	\$63,435.11
Apr	\$115,995.40	\$12,757.18	\$8,220.12	\$111,458.34	\$63,435.11	\$28,539.53	\$4,974.85	\$39,870.43
May	\$111,458.34	\$25,333.20	\$8,090.88	\$94,216.02	\$39,870.43	\$1,259.83	\$3,877.88	\$42,488.48
June	\$94,216.02	\$5,257.18	\$8,715.20	\$97,674.04	\$42,488.48	\$0.00	\$5,009.34	\$47,497.82
July	<u>\$97,674.04</u>	<u>\$7,885.79</u>	<u>\$8,215.35</u>	<u>\$98,003.60</u>	<u>\$47,497.82</u>	<u>\$975.00</u>	<u>\$4,903.35</u>	<u>\$51,426.17</u>
Aug	\$0.00	\$0.00		\$0.00	\$0.00	\$0.00		\$0.00
Sep	\$0.00	\$0.00		\$0.00	\$0.00	\$0.00		\$0.00
Current Totals	\$97,674.04	\$129,955.63	\$83,259.07	\$98,003.60	\$47,497.82	\$53,707.76	\$43,561.47	\$51,426.17
Ending Bal Misd/Fel	\$149,429.77	Avg Mo. Credit	\$8,325.91			Avg Mo. Credit	\$4,356.15	

Comments: During this reporting period, out of account 4031 \$7,885.79 was used for MH Specialty Court Coordinators' salary.
During this reporting period, out of account 4020 \$875.00 was utilized for STAC graduation program
and \$100 was utilized for MH Specialty Court Coordinator to attend training.

530 Fund Monthly Expenses

Line Item	FY16 Proposed	Budget	Oct.	Nov.	Dec.	Jan.	Feb.	Mar.	Apr.	May	June	July	Total	Balance
Salary	69,184	69,184.00	3,362.53	5,223.66	5,223.67	8,609.03	5,257.18	5,257.21	5,247.18	5,257.20	5,257.18	7,885.79	48,694.84	20,489.16
Training	10,000	15,000.00				2,965.00	2,055.00	627.40	483.53	1,259.83			7,390.76	7,609.24
Incentives/graduations/Annual Drug Court month programs	15,000	15,000.00			595.00		200.00			2,000.00			2,795.00	12,205.00
Pre-adjudication Courts-inpatient treatment	11,000													
CSCD - Inpatient Treatment	32,000	15,734.00											0.00	15,734.00
Office Supplies	1,000	1,800.00											0.00	1,800.00
Transportation (Pre-Aadjudicaiton Courts)	2,500	9,999.00											0.00	9,999.00
Transportation (CSCD)	10,000	15,000.00							7,500.00				7,500.00	7,500.00
Operating Total	150,684.00	141,717.00	3,362.53	5,223.66	5,818.67	11,574.03	7,512.18	5,884.61	13,230.71	8,517.03			66,380.60	75,336.40
CSCD Treatment	0	100,000.00	37,598.00				24,724.00		28,056.56				90,378.56	9,621.44
CSCD Studies	0	56,112.00											0.00	56,112.00
Approved Projects		156,112.00	0.00	0.00	595.00	2,965.00	2,255.00	627.40	7,983.53	3,259.83			90,378.56	65,733.44
Fund 4031			8,424.62	6,982.21	8,642.37	7,362.34	8,782.76	9,823.22	8,220.12	8,090.88			66,328.52	
Fund 4022			3,854.01	3,763.56	4,037.01	3,264.81	4,750.36	5,126.30	4,974.85	3,877.88			33,648.78	
Grand Total	150,684	297,829.00											156,759.16	141,069.84



Dallas County

Department of Criminal Justice

Dallas County Problem Solving Court Judges
FCCB, 133 Riverfront Blvd.
Dallas, Texas 75207

RE: 530 fund

In efforts to continue financial support of Dallas County Problem Solving Courts the following criteria has been established when requesting use of 530 funding. The Behavioral Health Steering Committee will review all 530 requests. Approved requests are then forwarded to Commissioner's Court, who has final authority over 530 funds.

In your request please include a description of how the fund will be utilized. If funds are being utilized for clients please include how many participants will be served, and the cost per participant. All requests should be submitted 30-45 days prior to the date the funding is needed. The following information is required with your request;

Item	Unit Cost	Units	Total Cost

1. The date the court was certified by the Office of the Governor, Criminal Justice Division.
2. Provide to BHSC your court's annual progress reports provided to PPRI (CJD annual report) for the last two fiscal years, when applicable.
3. Current fiscal year outcomes to include, (number active at start of fiscal year; number of new admissions; number of successful graduations; number of terminations; current number of enrollees) and monthly updates.
4. Listing of all your court's fund sources to include grants, federal funds, donations and state or local funding.
5. List any additional requests for funding the event; include the status of the event.
6. Justification for training, including lasted attended, when applicable.

Please provide your court contact regarding feedback of your request. All documents are to be turned into Christina Gonzales. Please feel free to email documents at christina.gonzales@dallascounty.org

530 Fund Monthly Expenses

Line Item	FY16 Proposed	Budget	Oct.	Nov.	Dec.	Jan.	Feb.	Mar.	Apr.	May	June	July	Total	Balance
Salary	69,184	69,184.00	3,362.53	5,223.66	5,223.67	8,609.03	5,257.18	5,257.21	5,247.18	5,257.20	5,257.18	7,885.79	48,694.84	20,489.16
Training	10,000	15,000.00				2,965.00	2,055.00	627.40	483.53	1,259.83			7,390.76	7,609.24
Incentives/graduations/Annual Drug Court month programs	15,000	15,000.00			595.00		200.00			2,000.00			2,795.00	12,205.00
Pre-adjudication Courts-inpatient treatment	11,000													
CSCD - Inpatient Treatment	32,000	15,734.00											0.00	15,734.00
Office Supplies	1,000	1,800.00											0.00	1,800.00
Transportation (Pre-Adjudication Courts)	2,500	9,999.00											0.00	9,999.00
Transportation (CSCD)	10,000	15,000.00							7,500.00				7,500.00	7,500.00
Operating Total	150,684.00	141,717.00	3,362.53	5,223.66	5,818.67	11,574.03	7,512.18	5,884.61	13,230.71	8,517.03			66,380.60	75,336.40
CSCD Treatment	0	100,000.00	37,598.00				24,724.00		28,056.56				90,378.56	9,621.44
CSCD Studies	0	56,112.00											0.00	56,112.00
Approved Projects		156,112.00	0.00	0.00	595.00	2,965.00	2,255.00	627.40	7,983.53	3,259.83			90,378.56	65,733.44
Fund 4031			8,424.62	6,982.21	8,642.37	7,362.34	8,782.76	9,823.22	8,220.12	8,090.88			66,328.52	
Fund 4022			3,854.01	3,763.56	4,037.01	3,264.81	4,750.36	5,126.30	4,974.85	3,877.88			33,648.78	
Grand Total	150,684	297,829.00											156,759.16	141,069.84



Dallas County

Department of Criminal Justice

The Successful Treatment of Addiction Through Collaboration (S.T.A.C.) Program

To: 530 Sub-Committee

STAC COURT REQUEST: To utilize approved Specialty Court Participant Incentive 530 Funds. STAC court is seeking \$4,375.00; to purchase incentives for clients currently in the program to help and encourage them toward successful completion of the program.

STAC Court has not utilized the Participant Incentive 530 funds. The 530 Sub-Committee & BHSC approved \$25,000.00 for Participant Incentives which includes incentives, graduations, and holiday parties. This request of \$4,375.00 is for utilization of those funds at \$25.00 for 175 participants.

Item	Unit Cost	Units	Total Cost
STAC A Participant Incentives	10.00	50	500.00
STAC B Participant Incentives	10.00	10	100.00
TOTAL			600.00

1. The date the court was certified by the Office of the Governor, Criminal Justice Division.
The Court has been operational since 2007 and certified.
2. Provide to BHSC your court's annual progress reports provided to PPRI (CJD annual report) for the last two fiscal years, when applicable.
Provided.
3. Current fiscal year outcomes to include number active at start of fiscal year; number of new admissions; number of successful graduations; number of terminations; current number of enrollees, and monthly updates.
Our STAC court numbers for the fiscal year 2014 are current participants, as of September 1, 2014, are 363. STAC has had 537 admissions and 604 completions. We had 289 successful, 303 unsuccessful, 3 died, 9 were inappropriate and there were 119 revocations.
4. Listing of your court's fund sources.
STAC receives a grant with \$2,500 for in-state training these funds will be utilized for the Public Defender and Assistant Supervisor for STAC to attend the training. No allotment for incentives was given in any other grant.
5. Dallas County List any additional requests for funding the event; include the status of the event. *STAC A has \$375.00 remaining and STAC B has not been given an allotment for CCIF.*
6. Justification for training, including lasted attended, when applicable. *N/A*

Respectfully submitted,
Judge Lela Mays

JUNE MONTHLY UPDATE

Dallas County Crisis Services Program	Program Specific and Systems Update	Summary of VO's Monthly Activities	Numeric Outcomes Reporting
1	Adapt Community Solutions (ACS) - Targets members released from jail using both ACS to ensure continuity of care.	Conducted case consultations on approximately 10 cases this month	VO-CSP Outcomes Report
2	Transicare Post Acute Transitional Services (PATS) - Targets high utilizers released from jail with more intensive need to ensure continuity of care.	Available for case consults/clinical support for Transicare Post-Acute Transitional Services (PATS)-Clinical Rounds Updated Flags- included 6 added 3- discharged Supported 7-day after-care appts. (7 hosp/1-jail discharges)	Flags in system - VO outcomes reports in progress.
3	Timberlawn Assessor - Provides neutral assessments and interventions for persons presenting for admission to inpatient	Supporting ACS 1115 with difficult cases, coordination of care and operations support	VO-CSP outcomes report
4	ACT FDU - Provides ACT for high utilizers of the legal system (Attending work-group meetings)	Updated-authorizations for FDU members-23 auths reviewed to note end dates (add/discharge as requested) Reviewed -12 FDU referrals	None
5	CSP-Systemic Operations Involved in LOC discussions and how Stages of Change must align/drive LOC decisions Initiated FDU precedent to discuss challenging cases with MH, legal, and DPD involvement to include transition and discharge planning. Created workflow to operationalize managing re-enrollment for clients who are returning to the community from hospital setting and/or jail. Created VO workflow to review cases for pre-auth consideration for CD Residential LOC which reduces relapse potential and decreases recidivism.	Created LOC document to support appropriate LOC decisions Facilitated phone conference including all parties involved to create a standard for transition/discharge planning. Phone conference to address enrollment issues and develop workflow	Not Applicable Not Applicable Not Applicable

**1115 Waiver- Dallas County
DY 4 Crisis Services Project (CSP) Metric Update
August 13, 2015**

Process Improvement Metrics (Category 1)

Metric Description	DY4 Goal	DY4 Achievement	Status	Match Value
Consumers Served	4,200	3,937 (as of June '15)	On-target	\$783,660
Bi-weekly meetings	26	22 (5 scheduled)	On-target	\$783,660
Test 3 new idea each quarter	3	3	On- target	\$783,660
Face-to-Face Learning Collaboratives	2	2	On-Target	\$783,660
Implement "raise the floor" from Learning Collaboratives	1 per LC	1 per LC	On-Target	N/A (LC metric)
Cost avoided by crisis alternative setting (jail)*	3% reduction from baseline (21%)	5% reduction from baseline (25% reduction in ratio of crisis services spend for Jail: Dallas County)	Over-Target	\$783,660
Evaluate CSP at BHLT	Yes	Yes (8 mtgs. to date)	On-Target	\$783,660
Total				\$4,701,960

Outcome Metrics (Category 3)

Outcome Improvement Metrics (Cat. 3)	Goal	Achievement	Status	Match Value
Decrease in jail readmissions from baseline	29%	24% (as of June '15)	On-target <u>(area for concern)</u>	\$130,458
Report measure to specification	Yes	Yes (Will report in October '15)	On-target	\$130,458
7-day follow-up after hospital	32%	85% (as of June '15)	Over-target	\$65,229
30-day follow-up after hospital	57%	87% (as of June '15)	Over-target	\$65,229
Report jail measure to specification	Yes	Yes (Will report in October '15)	On-Target	\$130,458
Total				\$521,832

* **Baseline Calculation (10/1/12 to 9/30/13):** Total crisis services cost spent for total jail bookings with NorthSTAR ID (\$6,389,021)/ Total crisis services cost spent in Dallas County (\$29,903,659)

Achievement Calculation (10/1/13 to 9/30/14): Total crisis services cost spent for total jail bookings with NorthSTAR ID (\$4,417,654)/ Total crisis services cost spent in Dallas County (\$27,188,486)

ACS 1115 CSP Monthly Production Report

	Past Year Average	Oct-14	Nov-14	Dec-14	Jan-15	Feb-15	Mar-15	Apr-15	May-15	Jun-15	AVERAGE	TOTAL
Total Service Episodes:	449	741	479	308	393	573	713	629	620	660	568	5,116
Total Unique Consumers:	328	740	344	239	274	462	559	518	402	399	437	3,937
Percentage Change to DY3		225.50%	104.82%	72.83%	83.49%	140.78%	170.34%	157.85%	122.50%	121.58%		
Total Encounters by Type:												
Triage		741	479	308	393	573	713	629	620	660	568	5,116
Care Coordination		1420	1297	1441	1425	2160	3032	2965	2668	2767	2131	19,175
F2F Encounter		157	145	173	190	247	310	340	285	299	238	2,146
TOTAL Encounters:		<u>2318</u>	<u>1921</u>	<u>1922</u>	<u>2008</u>	<u>2980</u>	<u>4055</u>	<u>3934</u>	<u>3573</u>	<u>3726</u>	<u>2937</u>	<u>26,437</u>

Recidivism 10/1/14 - 6/30/15

Triages 12	3762
Bookins 12	898
Recidivism % 12 - 12	23.87%
Traiges 6	2528
Bookins 6	416
Recidivism % 6 - 6	16.46%
Traiges 6	2528
Bookins 12	782
Recidivism % 6 - 12	30.93%

Frank Crowley Specific Report

	Oct-14	Nov-14	Dec-14	Jan-15	Feb-15	Mar-15	Apr-15	May-15	Jun-15	AVERAGE	TOTAL
Service Episodes:	680	435	267	352	535	650	572	572	614	508	4,677
Unique Consumers:											
By N* ID	651	281	182	217	409	489	439	337	336	371	3,341
By Client ID	28	19	20	18	15	18	25	22	22	21	187
TOTAL Unique Consumers:	679	300	202	235	424	507	464	359	358	396	3,528
TOTAL Unique Consumers as a %:	99.85%	68.97%	75.66%	66.76%	79.25%	78.00%	81.12%	62.76%	58.31%		
Unique F2F:											
By N* ID	83	67	96	106	150	220	220	154	152	139	1,248
By Client ID	17	14	8	10	10	13	13	15	15	13	115
TOTAL Unique F2F:	100	81	104	116	160	233	233	169	167	150	1,363
TOTAL Unique F2F as a %:	93%	76%	76%	75%	76%	89%	80%	69%	64%		
F2F Percentage:	15.88%	24.60%	50.94%	43.75%	39.44%	40.15%	51.05%	42.66%	42.18%	37.89%	37.89%
Encounters by Type:											
Triage	680	435	267	352	535	650	572	572	614	520	4,677
Care Coordination	1057	1023	1157	1160	1929	2705	2630	2407	2539	1845	16,607
F2F Encounter	108	107	136	154	211	261	292	244	259	197	1,772
TOTAL Encounters:	1845	1565	1560	1666	2675	3616	3494	3223	3412	2456	23,056
Female:											
Black	128	77	47	40	75	120	98	68	69	80	722
White	61	38	23	22	39	38	42	39	40	38	342
Hispanic	33	8	3	8	20	22	17	17	11	15	139
Other					1	4				3	5
Unknown		3		1	1	1	2	1		2	
TOTAL Female:	222	126	73	71	136	185	159	125	120	137	1,208
Male:											
Black	282	197	81	106	193	204	214	145	140	174	1,562
White	107	52	29	36	56	70	61	61	63	59	535
Hispanic	65	21	13	20	34	40	27	24	34	31	278
Other	2	3	1	1	4	6	3	2		3	22
Unknown	1	1	5	1	1	2		2	1	2	14
TOTAL Male:	457	274	129	164	288	322	305	234	238	272	2,411

Timberlawn Specific Report

	Oct-14	Nov-14	Dec-14	Jan-15	Feb-15	Mar-15	Apr-15	May-15	Jun-15	AVERAGE	TOTAL
Service Episodes:	61	44	41	41	38	63	57	48	46	49	439
Unique Consumers:											
By N° ID	55	37	33	30	32	46	49	37	22	38	341
By Client ID	6	7	4	9	6	6	5	6	19	8	68
TOTAL Unique Consumers:	61	44	37	39	38	52	54	43	41	46	409
TOTAL Unique Consumers as %:	100%	100%	90%	95%	100%	83%	95%	90%	89%	94%	93%
Unique F2F:											
By N° ID	45	33	32	28	30	40	47	33	19	34	307
By Client ID	3	5	2	6	5	5	1	5	17	5	49
TOTAL Unique F2F:	48	38	34	34	35	45	48	38	36	40	356
TOTAL Unique F2F as a %:	98%	100%	92%	94%	97%	92%	100%	93%	90%	96%	95%
F2F Percentage:	80.33%	86.36%	90.24%	87.80%	94.74%	77.78%	84.21%	85.42%	86.96%	85.19%	85.19%
Encounters by Type:											
Triage	61	44	41	41	38	63	57	48	46	49	439
Care Coordination	363	274	284	265	231	327	335	261	228	285	2568
F2F Encounter	49	38	37	36	36	49	48	41	40	42	374
TOTAL Encounters:	473	356	362	342	305	439	440	350	314	383	3381
Female:											
Black	14	6	9	7	7	12	13	9	9	10	86
White	3	7	3	6	3	5	4	5	8	5	44
Hispanic	8	7	2	7	7	3	7	8	5	6	54
Other	2			1		3			1	2	7
Unknown	2	2	1	2	1		1			2	
TOTAL Female:	29	22	15	23	18	23	25	22	23	22	191
Male:											
Black	16	14	9	6	8	12	10	8	9	10	92
White	9	3	5	2	8	7	6	9	4	6	53
Hispanic	6	5	4	5	3	7	10	3	4	5	47
Other	1		2		1	3		1		2	8
Unknown			2	3			3		1	2	9
TOTAL Male:	32	22	22	16	20	29	29	21	18	24	209
Age of Triage Encounters:											
Adult	38	30	30	24	32	32	34	25	31	31	276
Minor	21	11	5	10	5	17	15	17	9	12	110
Uncollected	2	3	2	5	1	3	5	1	1	3	23
TOTAL Age of Triage Encounters:	61	44	37	39	38	52	54	43	41	46	409
Age of F2F Encounters:											
Adult	31	30	29	24	31	30	36	23	27	29	261
Minor	17	8	5	10	4	15	12	15	9	11	95
Uncollected	0	0								0	0
TOTAL Age of F2F Encounters:	48	38	34	34	35	45	48	38	36	40	356
F2F Outcomes:											
23 hours obs											
Crisis Residential		2	5	1	3	3	6	1	1	3	22
Hotline/MCOT				1						1	
Inpatient- Civil	9	6	5	5	2	8	7	10	5	6	57
Intensive Outpatient	4	3	2	1	6	4	5	3	5	4	33
Left Against Clinical Advice			1							1	
Medical Referral	3	1	4	2	2			3	2	2	17
No Behavioral Health Services Indicated			1				1		1	1	
Other Higher Level of Care		1								1	1
Partial Hospitalization Program	1	1								1	2
Residential-CD	2	2								2	4
Residential-SUD/ COPSD		1	1	2	2	2	2			2	10
Routine Outpatient	25	20	12	19	15	19	19	15	18	18	162
School-based services			1			1				1	2
Unable to complete assessment						1	2			2	3
Urgent Care Clinic	4	1	2	3	5	7	6	6	4	4	38
TOTAL Outcomes	48	38	34	34	35	45	48	38	36	40	351
Diversion Rate	81.25%	84.21%	85.29%	85.29%	94.29%	82.22%	85.42%	73.68%	86.11%		83.76%

Forensic Diversion Unit (FDU) Report

	Oct-14	Nov-14	Dec-14	Jan-15	Feb-15	Mar-15	Apr-15	May-15	Jun-15
Beginning Census	40	39	38	39	39	35	34	34	37
Number of Referrals Received from CSP									
Adapt	1	2	2	1	1	0	2	8	7
Metrocare	0	0	0	0	0	1	0	0	0
Transicare	0	0	0	0	1	0	1	2	
Number of Admissions	1	0	2	1	2	0	3	3	5
Number Discharged	2	1	1	1	4	3	0		2
Number not admitted due to:									
Client qualifies for ACT	0	0	1	0	0	0	0	0	0
Client qualifies for other programs	0	0	0	0	0	0	0	0	3
Client didn't meet level of need required	0	0	0	0	0	1	0	0	0
Other reasons	0	0	0	0	0	0	0	0	0
Average Service Utilization:									
Average hours seen	10.72	8.76	7.8	8.3	9.2	7	7.31	9.22	12.27
Encounter Breakdown:									
Face to Face	450	245	357	497	419	236	302	519	469.23
Service Coordination	69	35	43	76	81	69	75	94	225
Number of clients accessing:									
Emergency Room (medical)	1	1	0	0	0	0	0	1	0
23-hour observation (psych)	1	1	1	0	0	1	0	2	0
Inpatient (med/ psych)	8	0	2	2	1	2	0	2	0
Jail book-in	2	4	1	1	0	0	1	3	5
Reasons for Discharge:									
Graduate	0	0	0	0	3	0	0	0	0
Client Disengagement	1	0	0	0	1	1	0	0	2
Extended Jail stay (case-by-case basis)	1	0	1	1	2	0	1	1	0
Other Intervening factors	0	1	0	0	0	0	0	0	1-TJC
End of Month Stats:									
Number of Active FDU clients end of month	39	38	39	39	37	34	34	37	41
Number of Unique Consumers	0	0	0	0	0	1	3	3	5
Number of clients on Waiting List	0	0	0	0	0	0	Pending 6	pending 6	4
Average Length of stay on FDU (month)	11.72	12.38	12.07	12.45	12.15	12.49	12.18	12.65	12.32
Maximum Census	45	45	45	45	45	45	45	45	45

**Transicare Reporting
Crisis Services Project**

		2014-10	2014-11	2014-12	2015-01	2015-02	2015-03	2015-04	2015-05	2015-06
1	Beginning Census	36	34	42	48	58	47	62	65	62
2	REFERRALS	18	27	42	31	7	53	16	29	37
3	Admissions									
4	Referred Admitted	4	8	12	12	2	21	7	9	11
5	No Admit Client Refusal	1		1	1				3	2
6	No Admit Criteria	6	7	8	9	1	10	3	8	10
7	No Admit Structural	1	6	6	4		2	1	1	2
8	Pending	6	6	15	5	4	20	5	8	12
9	<i>PRIOR PENDING</i>									
10	Pending Admitted		5	4	7	3	4	9	6	9
11	No Admit Client Refusal		1	3			1	3		1
12	No Admit Criteria	3	3		2	2		2		1
13	No Admit Structural		1	1	4		2	2	1	0
14										
15	Total Admissions	4	13	16	19	5	25	16	15	20
16										
17	Discharges									
18	Success Transfer	1	3	2	4	8	5	3	4	5
19	DC Midterm Disengage	1		1		1	1	3	4	2
20	DC Rapid Disengage	3	1	1	1	1	1		1	0
21	DC Structural	1	1	6	4	6	3	7	9	6
22	Total Discharged	6	5	10	9	16	10	13	18	13
23	Active End Of Month	34	42	48	58	47	62	65	62	69
24										
25	Outcome Data									
26	<i>Terrell State Hospital Linkages</i>									
27	≤7 Connect To Prescriber	2	4	4	2	3	7	7	3	3
28	≤30 Connect To Prescriber	2							1	0
29	Missed Metric			4		1	0	0	0	0
30	Total Released	4	4	8	2	4	7	7	4	3
31										
32	Cummulative ≤7 Connect %	50.0%	75.0%	62.5%	66.7%	68.2%	75.9%	80.6%	80.0%	84.6%
33	Cummulative ≤30 Connect %	100.0%	100.0%	75.0%	77.8%	77.3%	82.8%	86.1%	87.5%	87.2%
34	Missed Metric	0.0%	0.0%	25.0%	22.2%	22.7%	17.2%	13.9%	12.5%	12.8%
35	<i>Unduplicated Served</i>									
36	Monthly Unduplicated	56	53	72	81	65	90	84	90	91
37	DSRIP YTD Unduplicated Served	56	74	103	136	140	182	199	226	257
38										
39	<i>Encounter Data</i>									
40	F2F Encounter	297	226	451	497	376	409	561	490	516
41	Care Coord	174	138	177	209	178	177	246	255	260
42	Total	471	364	628	706	554	586	807	745	776

Pregnant Patients In Jail

	January - June 2014	January - June 2015	July 2015	August 2015
In Jail (at least one day in month-not total at end of the month)	288	301	36	
Probation Violations	76	63	10	
New offenses/BF/IB only	178	208	25	
Parole Violations only	5	10	-	
Other reason in jail	29	20	1	
Released Since Last Month	106	140	22	
Released to SAFPF	1	3	-	
Released to Nexus Recovery	10	18	2	
Released to state hospital		6	-	
Released to other treatment	4	2	1	
Released to TDCJ (ID or SJ)	12	10	3	
Released on Probation	13	22	5	
Released on bond	27	36	4	
Released to Other Agencies	15	11	4	
Released for other Reasons	24	32	3	
New Cases Since Last in Month	96	110	12	
Emails To Court Coordinators for settings	12	18	-	-
Email Notifications to Probation	24	20	3	1
Email Notifications to TDCJ desk (Sgt. Temple)	16	10	-	2
Pregnant Patient Interviews for Referral Purposes	0	0	-	-
Nexus Notifications		0	-	-

Jail Competency Stats 2015

	Jan	Feb	March	April	May	June	July	Aug	Sept	Oct	Nov	Dec	Totals
Active													
New Evals - Incompetent	48	61	39	38	43	41	46						316
Waiting for the hospital - End of month	31	43	73	84	79	71	55	0	0	0	0	0	
Less than 30 days	24	26	55	33	29	35	25						
30 to 60 days	5	12	13	38	24	16	12						
Greater than 60 days	2	5	5	13	26	20	18						
Returned to jail from the hospital	13	8	13	15	22	16	23	0	0	0	0	0	110
Felony	8	7	10	11	16	12	18						
Average length of stay (days)	105	102	80	85	100	79	101						
Misdemeanor	5	1	3	4	6	4	5						
Average length of stay (days)	91	56	84	80	71	54	64						
Previous return legal case pending	27	43	30	36	23	36	26	0	0	0	0	0	221
Less than 30 days	5	12	8	9	0	0	0						
1 to 3 months	7	13	6	10	6	20	12						
3 to 6 months	10	11	8	5	7	4	5						
> 6 months	5	7	8	12	10	12	9						
Closed													
New Evals - Competent	28	38	37	36	33	33	39						244
Admitted to the state hospital	35	18	35	13	34	38	40	0	0	0	0	0	213
Felony	24	11	22	8	24	21	26						
Average wait for a hospital bed (days)	61	59	56	54	54	79	76						
Misdemeanor	11	7	13	5	10	17	14						
Average wait for a hospital bed (days)	39	39	49	42	42	60	45						
Hospital Return Legal Case Resolved	22	11	23	29	20	22	16	0	0	0	0	0	143
Less than 30 days	16	2	6	7	8	8	7						
1 to 3 months	5	1	9	14	9	11	5						
3 to 6 months	1	7	3	2	3	1	3						
> 6 months	0	1	5	6	0	2	1						
Case dismissed at the hospital	1	5	6	12	0	6	4	0	0	0	0	0	34
Felony	0	0	1	1	0	1	0						
Misdemeanor	1	5	5	11	0	5	4						

Monthly NorthSTAR Intakes

Month-Year	Total inmates booked into the jail with a NorthStar match	Book in Totals for the month	% of people with a NorthStar match booked into the jail
2007 Total	6501	93413	7%
2008 Total	8200	99580	8%
2009 Total	10636	98407	11%
2010 Total	12994	96245	14%
2011 Total	15810	90429	17%
2012 Total	17036	83524	20%
2013 Total	17762	81010	22%
Jan-14	1464	6639	22%
Feb-14	1308	6109	21%
Mar-14	1399	6261	22%
Apr-14	1535	6587	23%
May-14	1430	6456	22%
Jun-14	1375	5832	24%
Jul-14	1489	6453	23%
Aug-14	1523	6227	24%
Sep-14	1427	5936	24%
Oct-14	1504	6072	25%
Nov-14	1213	5429	22%
Dec-14	1252	5167	24%
2014 Total	16919	73168	23%
Jan-15	1429	5941	24%
Feb-15	1230	5164	24%
Mar-15	1545	5979	26%
Apr-15	1582	6350	25%
May-15	1491	5901	25%
Jun-15	1434	5848	25%
Jul-15	1517	6357	24%
2015 Total	10228	41540	25%

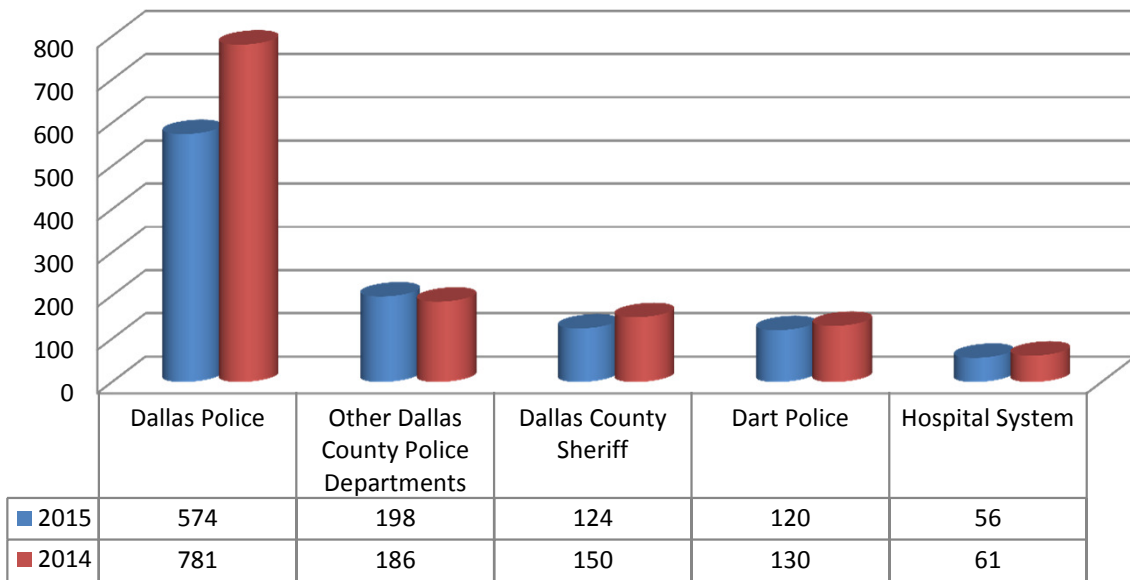
Multi-Bookin NorthSTAR Tracking

2015	# Times Booked In	# Unique Clients
	Bookins 11	1
	Bookins 10	1
	Bookins 9	4
	Bookins 8	4
	Bookins 7	6
	Bookins 6	21
	Bookins 5	29
	Bookins 4	80
	Bookins 3	249
	Bookins 2	1127
	Bookins 1	6733
Total		8255
As of 8/5/15		

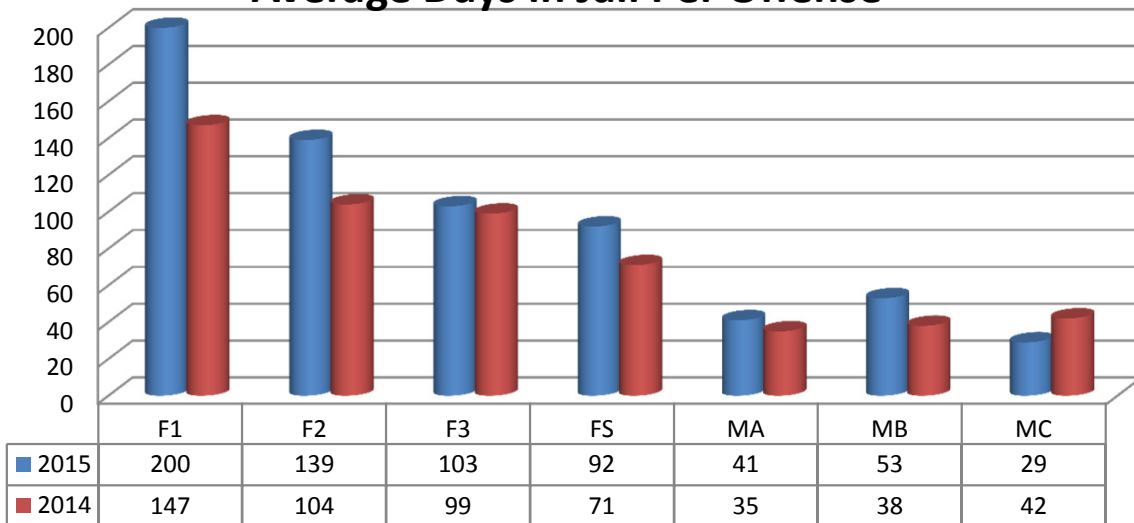
Semi- Annual Homeless Population Jail Report

	<i>2014</i>	<i>2015</i>
Unique Individuals	1267*	1034
Total Number of Arrestes	1307	1076
Days In Jail	13606	67940
Average Number of Days in Jail	45	136

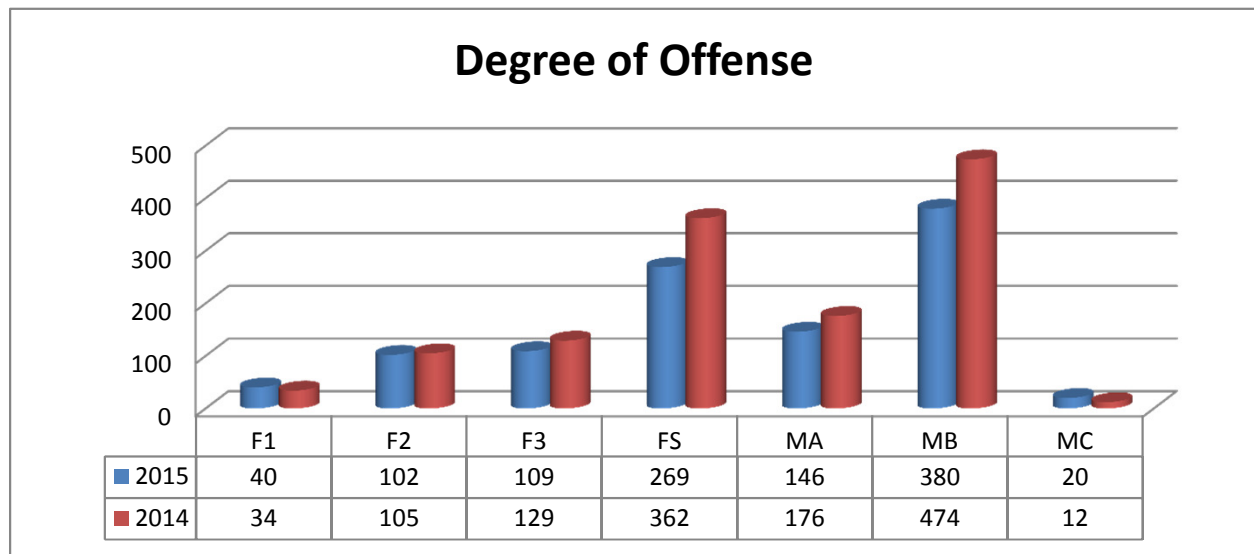
Arresting Agency



Average Days in Jail Per Offense



Semi- Annual Homeless Population Jail Report

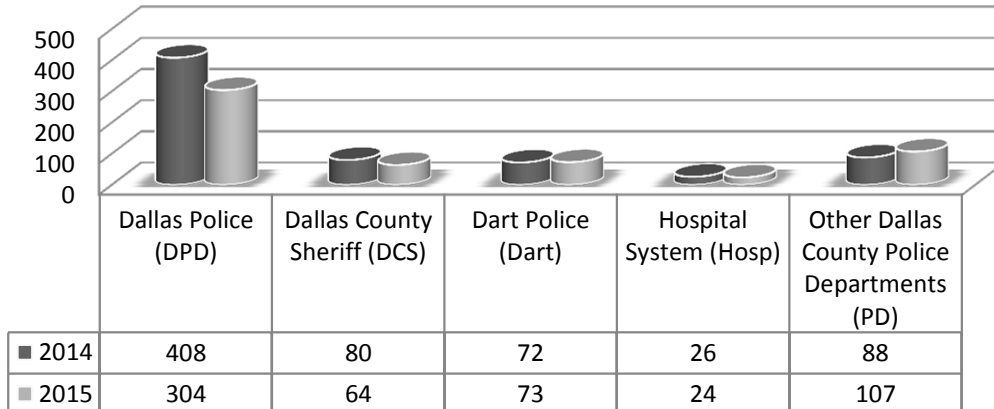


	<u>2015</u>	<u>2014</u>		<u>2015</u>	<u>2014</u>
AGG ROBBERY	30%	32%	Released to TDCJ	40%	38%
MAN DEL CS PG 1 >=4G<200G	30%	23%	Judicial Treatment Center/Wilmer	10%	12%
AGG SEXUAL ASSAULT CHILD	12%		Released on Probation	10%	
* 2014 Agg Assault Pub. Serv		15%	* 2014 Served Time		12%
AGG ASSAULT W/DEADLY WE	38%	34%	Released to TDCJ	35%	30%
BURGLARY OF HABITATION	19%	16%	Served Time	14%	22%
ROBBERY	12%	16%	Released to Special Program	10%	17%
ASSAULT FAMILY/HOUSEHOL	16%	30%	Released to TDCJ	27%	26%
ASSAULT PUBLIC SERVANT	14%	12%	Served Time	21%	22%
HARRASSMENT OF PUBLIC S	11%		Released to Special Program	14%	9%
* 2014 Sex Offenders Duty to Register Life		8%			
POSS CS PG 1 <1G	31%	29%	Released to TDCJ	34%	35%
THEFT <\$1,500 2/MORE PREV	18%	23%	Served Time	26%	23%
PROSTITUTION W/3RD OR MORE	11%	14%	Released to Special Program	13%	7%
ASSAULT CAUSES BODILY INJ	23%	28%	Served Time	53%	53%
FAIL TO IDENTIFY FUGITIVE I	17%		Posted Bond	14%	13%
BURGLARY OF VEHICLE	14%	11%	Released to Mental Facility	9%	
* 2014 Prostitution with 1/2 Prev Con		9%	* 2014 Released to Probation		5%
* In 2014 Fail to Identify was at 6%					
CRIMINAL TRESPASS	65%	61%	Served Time	62%	60%
THEFT >=\$50<\$500	13%	13%	Released to Special Program	13%	8%
POSS MARIJ <2OZ	6%	6%	Posted Bond	9%	6%
Public Intox	75%	34%	Released per DPD/Class C Only	45%	25%
Disorderly Conduct	10%	34%	Released By Order of the Court	25%	25%
Fare Evasion	5%	8%	Other	15%	17%

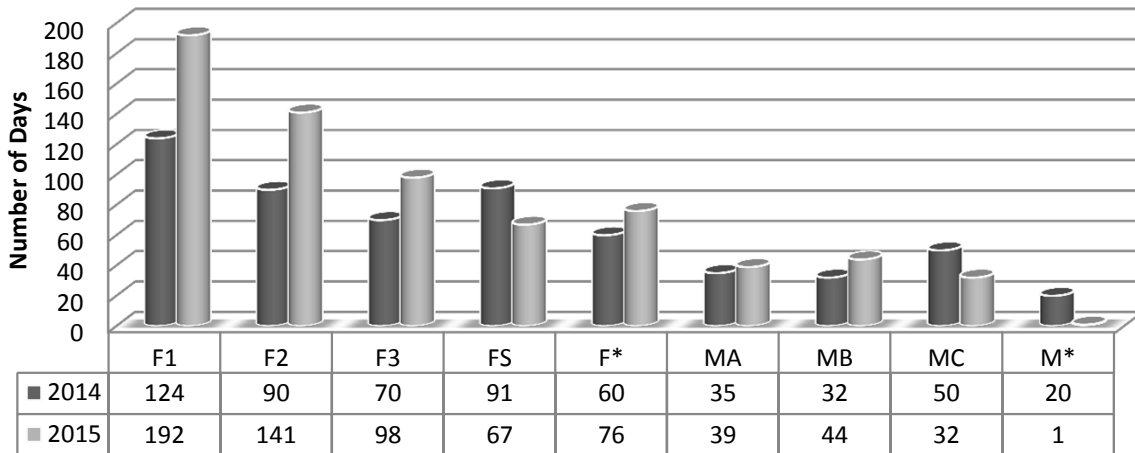
Homeless Jail Population Quarterly Review

	<u>2014</u>	<u>2015</u>
<u>Number of Arrests</u>	674	572
<u>Unique Individuals</u>	632	555
<u>Days in Jail</u>	33,798	31,987
<u>Average Number of Days</u>	50	56

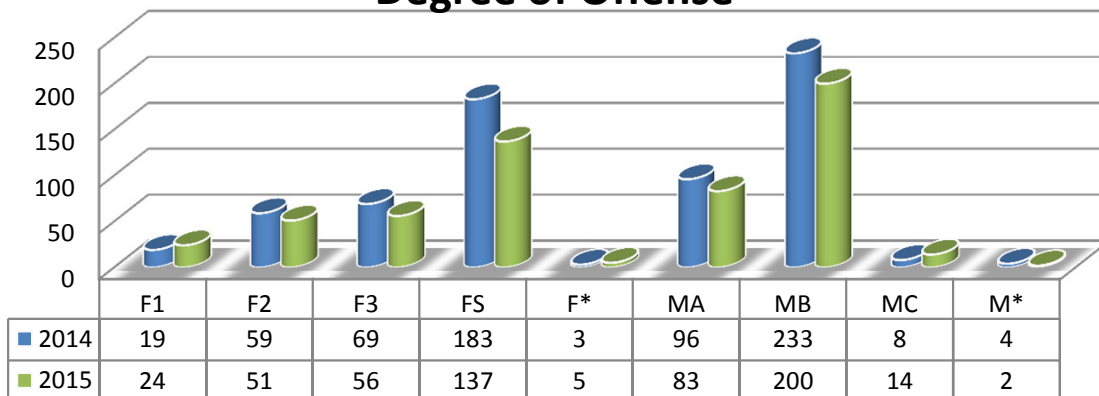
Arresting Agency



Average # of Days In Jail

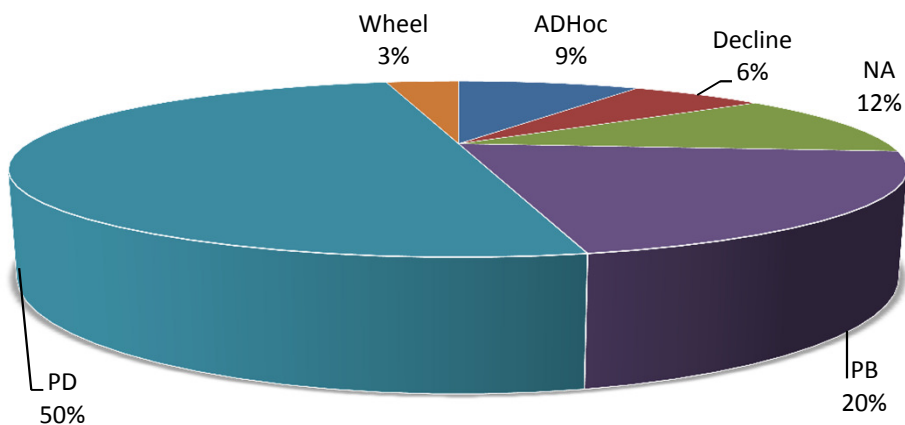


Degree of Offense

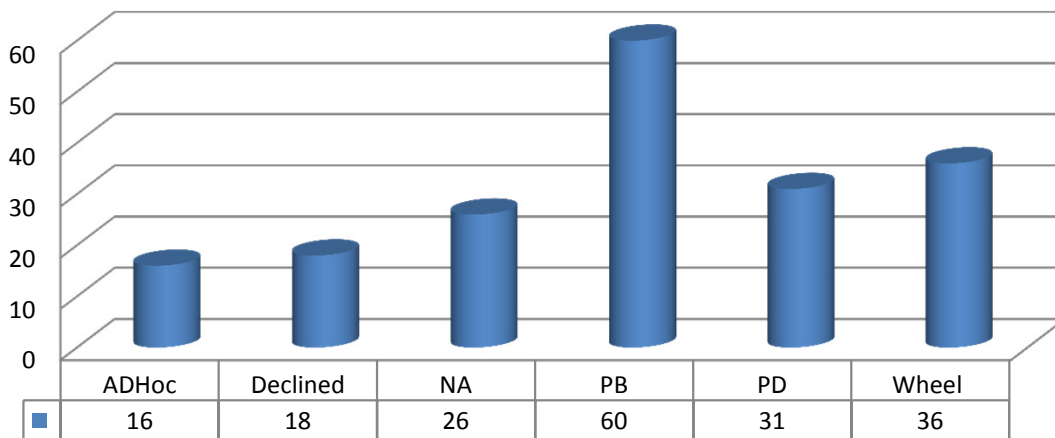


Homeless Jail Population Quarterly Review

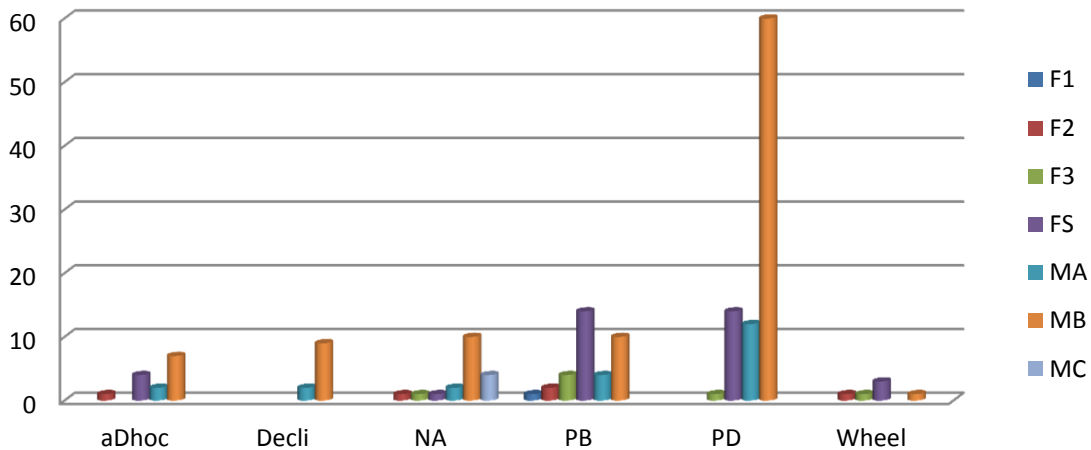
Attorney Type



Avg. Days in Jail



Degree of Offense



HARRY INGRAM				FY2015 ATLAS STATISTICS								203/HAWTHORNE					
MONTH	BEGINNING # OF PENDING CASES	+NEW CASES RECEIVED THIS MONTH	=TOTAL CASES	TBJ	TBC	PLEAS	REV	GRADUATES	PROBATION MODIFICATIONS	DISMISSALS	OTHERS	TOTAL DISPOSITIONS	ENDING # PENDING CASES **	CORRECTED ATLAS PARTICIPANTS	CORRECTED PARTICIPANTS IN CUSTODY	FORMER ATLAS PARTICIPANTS	BOND
July	50	2	52	0	0	0	0	0	0	0	0	0	52	29	1	0	28

HARRY INGRAM			FY2015 MISDEMEANOR MENTAL HEALTH COURT STATS									CCCAP1/WADE		
MONTH	BEGINNING # OF PENDING CASES	Rediverts	+NEW CASES RECEIVED THIS MONTH	=TOTAL CASES	TBJ	TBC	PLEAS	DISMISSAL	OTHER	TOTAL DISPOSITIONS	ENDING # PENDING CASES **	CURRENT PARTICIPANTS	NUMBER OF GRADUATES	BOND ***
July	88	0	10	98	0	0	2	0	2	4	94	39	0	39

July 2015				FY2015 MHPD STATS								
MONTH	BEGINNING # OF PENDING CASES	+NEW CASES RECEIVED THIS MONTH	=TOTAL CASES	TRIALS	PLEAS	CON D. DISM.	REVOCA TION	DISMISSALS	INCOM PETENT	REFERRALS	OTHER COUNSEL	TOTAL CLOSED
R. LENOX	171	45	216	0	14	9	0	6	1	0	14	44
L. TAYLOR	266	23	289	0	2	1	2	1	0	0	5	11

MARIUM UDDIN				FY2015 FELONY COMPETENCY STATISTICS												
MONTH	BEGINNING # OF CASES	NEW CASES THIS MONTH	TBJ	TBC	Alt. Trial Dispos	PLEAS	REVOCA TIONS	DISMISSALS	PROBATION	COM P. HRG.	EXTENSION S	CIVIL COM MIT.	MHM R REFERRAL	CONSULTS	OTHER	ENDING # OF PEOPLE IN
July	117	15	0	0	0	9	0	1	0	18	9	0	0	0	1	13

MARIUM UDDIN				FY2015 MISDEMEANOR COMPETENCY STATISTICS												
MONTH	BEGINNING # OF CASES	NEW CASES THIS MONTH	TBJ	TBC	Alt. Trial Dispos	PLEAS	REVOCA TIONS	DISMISSALS	PROBATION	COM P. HRG.	EXTENSION S	CIVIL COM MIT.	MHM R REFERRAL	CONSULTS	OTHER	ENDING # OF PEOPLE IN
July	82	34	0	0	0	0	0	34	0	36	4	0	0	0	0	16

July 2015				MI Court								
MONTH	TOTAL NEW CASES RECEIVED	NEW CLIENTS AT GREEN OAKS	NEW CLIENTS AT MEDICAL CENTER MCKINNEY	NEW CLIENTS AT PARKLAND	NEW CLIENTS AT TIMBERLAND	NEW CLIENTS AT HICKORY TRAILS	NEW CLIENTS AT ZALE LIPSHY	NEW CLIENTS AT TERRELL STATE HOSPITAL	PROBABLE CAUSE HEARINGS HELD	NO CONTEST COMMIT	CONTES TED COMMIT	FORCED MEDS HEARING IN COURT
VACANT												
L. TAYLOR	31	0	17	0	14	0	0	0	3	0	0	0

RANDA BLACK				MI COURT				
MONTH	NEW CLIENTS	PROBABLE CAUSE HEARINGS HELD	NO CONTEST COMMIT TO TSH	CONTESTED COMMIT TO TSH	RECOMMITMENTS	MEDICATION HEARINGS	OUTPATIENT	JURY TRIAL
July	95	5	3	17	8	23	0	0

NAME OF MHMR PROGRAM: Metrocare Services
PROGRAM: SNOP

MONTH OF REPORT: 07_2015

DATE SUBMITTED: 08_2015

	ATLAS	Post-DDRTC	STAC	Misd.	PRIDE	DDRTC	PROBATION ICM	PAROLE ICM
1. Number of Offenders served at the beginning of the month:	14	28	30	24	4	53	66	96
2. Number of Referrals received:	4	11	5	6	0	12	4	5
3. Number of Assessments:	4	11	5	6	0	12	4	5
4. Number of Admissions:	4	11	5	6	0	12	4	5
5. Average length of stay by months:	2.08	2.45	2.37	1.7	1.88	1.6	4.26	4.59
5. a. Average hours served:	5.84	3.9	4.68	5.01	4.39	7.58	3.87	3.63
6. Services Utilized:	0	0	0	0	0	5	0	0
6. a. Visits to ER (medical)	0	0	0	0	0	3	0	0
6. b. 23-hour Observation (psych)	0	0	0	0	0	0	0	0
6. c. Inpatient Stay (med/psych)	0	0	0	0	0	2	1	1
6. d. Jail days less than 30 days:								
7. Number of Discharges:	2	4	3	4	0	12	11	10
7. a. Terminations (jail more than 30days)	2	1	3	4	0	0	3	3
7. b. Warrants/Suspension: (medical d.c.; abscond)	0	0	0	0	0	1	2	1
7. c. Graduates	0	3	0	0	0	11	1	1
8. Number of Offenders served at the end of month:	16	35	32	26	4	53	59	91
9. Total served in the month:	18	39	35	30	4	65	59	91
10. Number of Offenders on the waiting list:	0	0	0	0	0	0	0	0
11. Minimum/Maximum Census per FTE allocation	20-25	30-38	30-38	30-38	10-12	60	100-125	100-125
12. % of FTE Assigned	1	1.5	1.5	1.5	0.5		5	5
13. Vacancy(s)	0	0	0	0	0	0	0	1

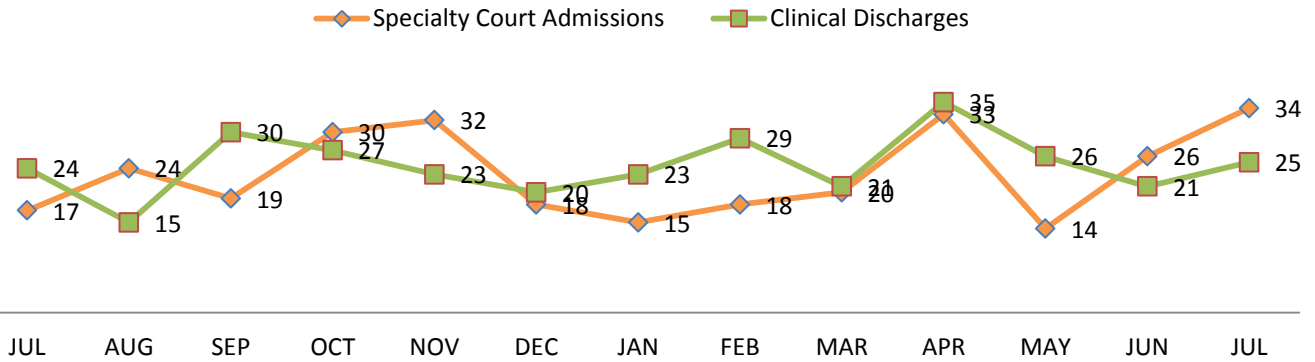
Each FTE covers 20-25

The Bridge	2014	2014	2014	2014	2014	2014	2015	2015	2015	2015	2015	2015	2015	
	July	August	Sep.	Oct.	Nov.	Dec.	Jan.	Feb.	Mar.	Apr.	May	June	July	AVG.
Bridge Emergency Shelter	502	374	322	333	373	345	354	288	287	291	289	282	292	333.2308
Bridge Transitional Shelter	120	114	116	122	113	109	119	111	114	107	112	112	105	113.3846
Direct Referrals to Other Shelters	815	609	576	530	605	597	657	574	595	610	645	710	706	633
Care Management	943	853	932	855	798	834	870	829	880	902	867	915	954	879.3846
Job Ready (Workforce)	87	80	100	95	81	91	108	96	112	86	100	111	113	96.92308
Job Placements (Workforce)	28	20	29	27	19	18	23	23	29	34	28	34	29	26.23077
Housing Placements	31	27	19	23	27	21	37	27	32	31	26	32	20	27.15385
Lifenet Mental Health Serv.	443	387	408	408	332	369	389	329	375	359	368	420	418	385
Lifenet Chemical Dep. Serv.	173	150	138	158	104	150	150	194	110	80	51	43	46	119
Parkland Clinic*	747	676	802	837	641	819	789	740	878	932	777	820	748	785.0769
VA Services	55	46	45	29	36	28	39	43	30	36	28	38	23	36.61538
Judicial Re-Entry	2	6	9	10	11	8	3	6	9	5	7	12	6	7.230769
Jail Release (General)	1	5	1	1	1	0	1	9	17	27	24	23	24	10.30769
Triage Assessments*	573	510	495	457	497	496	544	451	505	509	515	602	544	515.2308

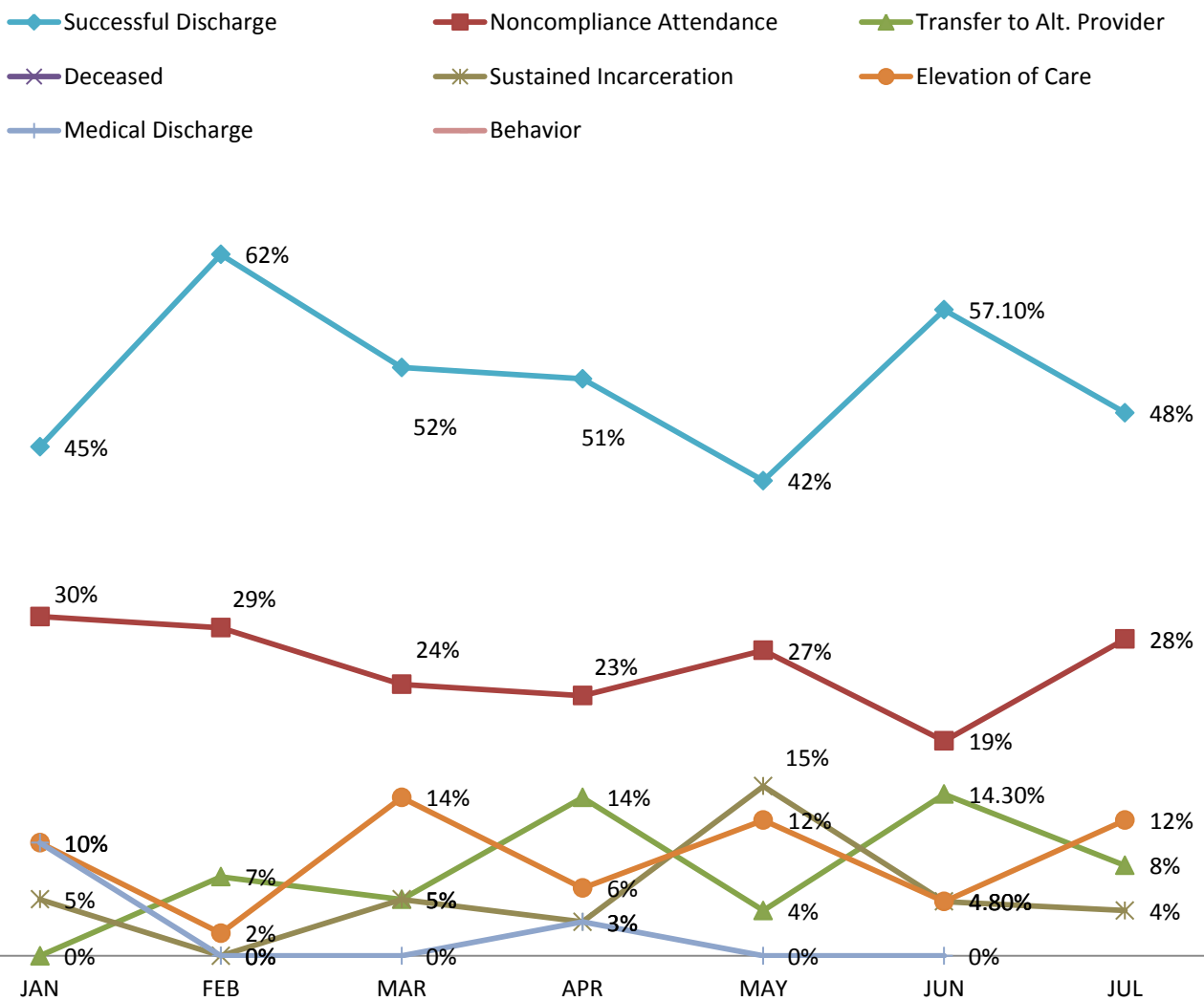
Each category represents *unduplicated guests* , not totals served.

*exception - Parkland Clinic and Triage Assessment numbers are for totals served.

Specialty Court Admissin / Discharge Trend

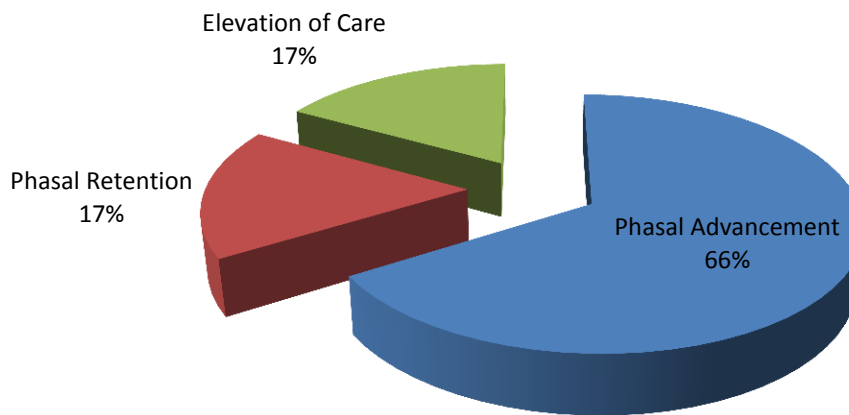


Outcome Distribution Trend

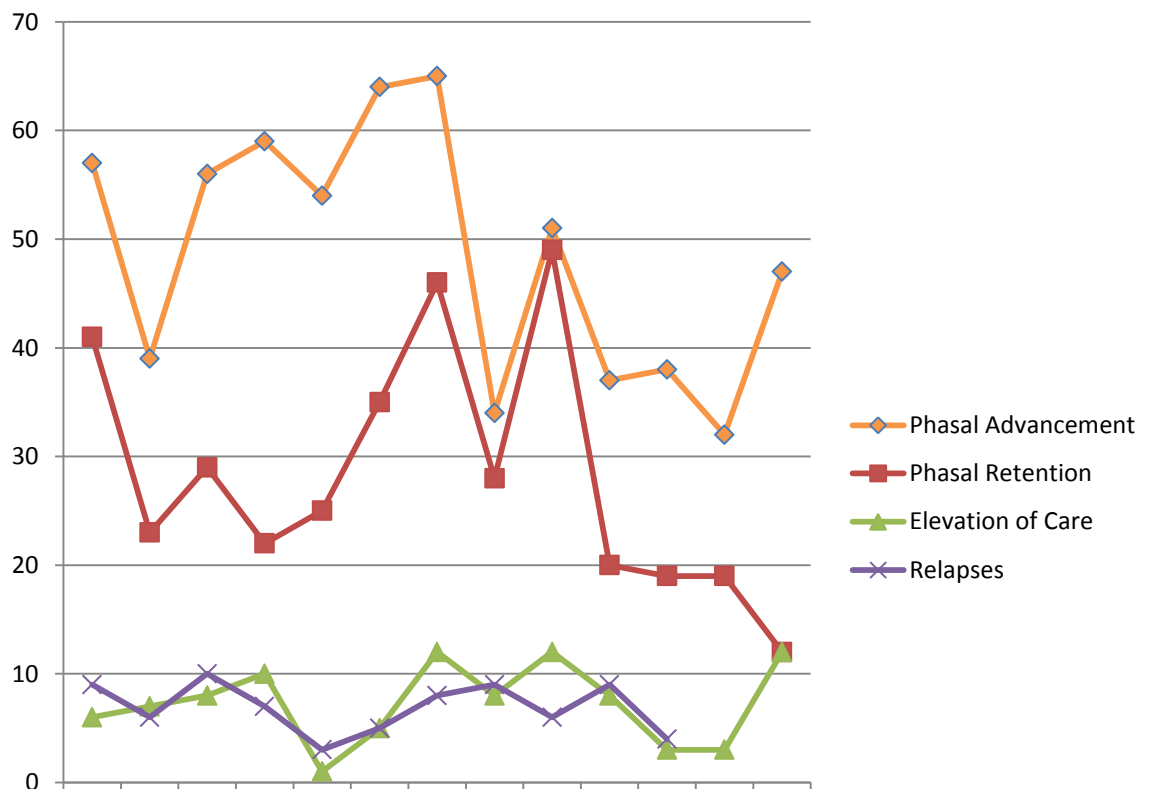


SAMSHA National AVG on Successful Discharge Rate: 34%

JUL-15 Specialty Court Treatment Program Progression Rate

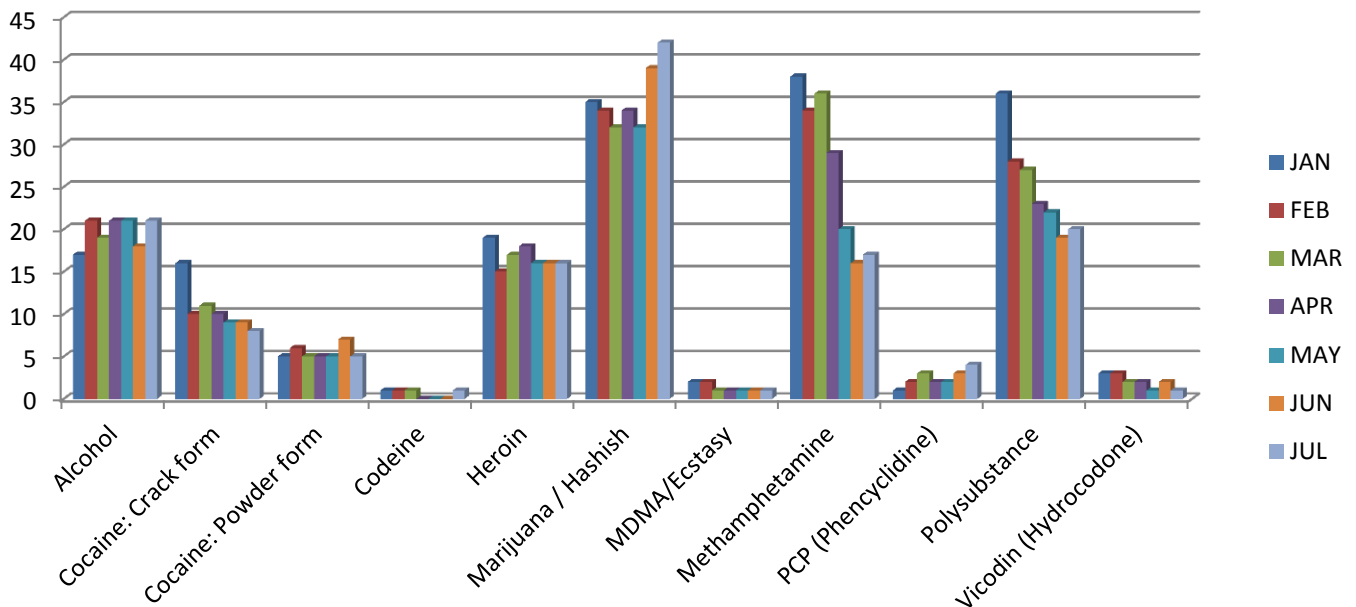


Specialty Court Treatment Program Progression Trend

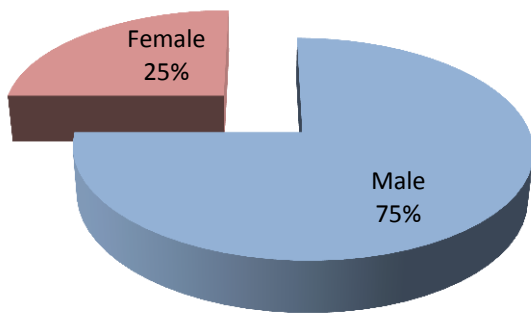


	JUL	AUG	SEP	OCT	NOV	DEC	JAN	FEB	MAR	APR	MAY	JUN	JUL
Phasal Advancement	57	39	56	59	54	64	65	34	51	37	38	32	47
Phasal Retention	41	23	29	22	25	35	46	28	49	20	19	19	12
Elevation of Care	6	7	8	10	1	5	12	8	12	8	3	3	12
Relapses	9	6	10	7	3	5	8	9	6	9	4		

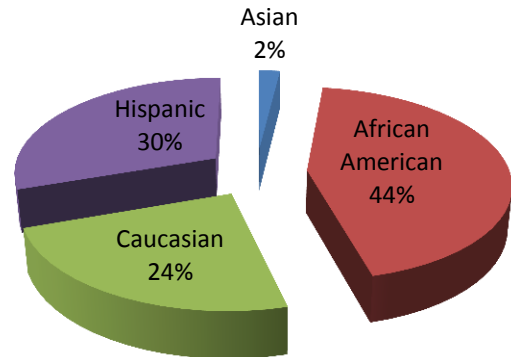
Specialty Court Participants by Reported/Observed Drug of Choice



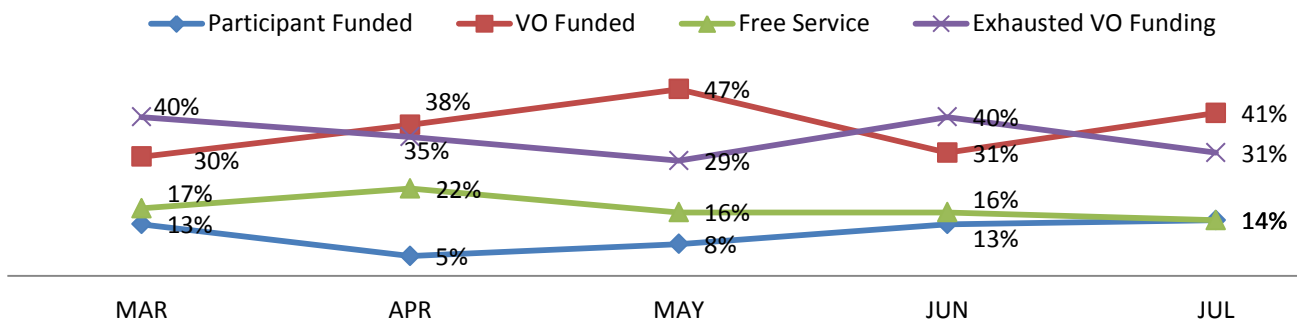
JUL-15 Specialty Court Participants by Gender



JUL-15 Specialty Court Participants by Ethnicity



Specialty Court Participant Funding Trend



Outpatient Competency Restoration Monthly Totals													
	Jan	Feb	Mar	April	May	June	July	Aug	Sept	Oct	Nov	Dec	Total
Beginning of Month	28	22	23	22	29	27	29	29	0	0	0	0	
<u>Misdemeanor</u>	13	12	12	11	16	15	19						
Placed in OCR	3	5	5	8	2	8	4						35
Pending	2	1	0	1	7	0	2						
Homeless @ admit	3	3	3	5	0	4	3						21
Dispo	4	5	6	3	3	4	7	0	0	0	0	0	32
Outpatient to Inpatient	0	0	1	0	1	0	0						2
Abscond	0	1	3	0	1	1	0						6
Restored and Dismissed	4	1	2	2	1	3	6						19
Dismissed	0	3	0	1	0	0	1						5
<u>Felony</u>	15	10	11	11	13	12	10						
Placed in OCR	2	2	2	3	2	1	3						15
Pending	0	0	0	1	2	4	4						
Homeless @ admit	1	1	0	2	0	0	1						5
Dispo	7	1	2	1	3	3	0	0	0	0	0	0	17
Outpatient to Inpatient	0	0	0	0	2	0	0						2
Abscond	0	1	0	0	0	0	0						1
Restored and Dismissed	7	0	2	1	1	2	0						13
Dismissed	0	0	0	0	0	1	0						1
End of Month	22	23	22	29	27	29	29	0	0	0	0	0	181

DIVERT Numbers

FY15	Start of Month	New admissions	DAOpt-out	Unsuccessful discharge	Graduates	End of Month
Sept. 14	136	14	0	0	11	139
Oct. 14	139	7	0	2	0	144
Nov. 14	144	9	0	6	0	147
Dec. 14	147	10	0	0	6	151
Jan. 15	152	6	0	1	7	150
Feb. 15	150	7	0	4	0	152
Mar. 15	153	3	0	6	7	143
Apr. 15	143	19	0	1	0	161
May. 15	161	10	0	5	17	149
Jun. 15	149	14	0	3	0	160
Jul. 15	160	7	0	4	15	148
Aug. 15						

TOTAL	106	32	63
-------	-----	----	----

ATLAS Court

FY15	Start of Month	New admissions	DA Opt-out	Unsuccessful discharge	Graduates	End of Month
Dec. 14	24	5	0	2	0	27
Jan. 15	27	8	0	4	0	31
Feb. 15	31	0	0	3	0	28
Mar. 15	28	2	0	2	2	26
Apr. 15	26	7	0	3	0	30
May-15	30	1	0	1	0	30
Jun. 15	30	4	0	4	7	23
Jul. 15	23	1	0	3	0	21
Aug. 15						
Sept. 15						
Oct. 15						
Nov. 15						
Dec. 15						

Program Max: 35

DDAC

FY15	Start of Month	New admissions	DA Opt-out	Unsuccessful discharge	Graduates	End of Month
Dec. 14	23	2	0	4	8	13
Jan. 15	13	6	0	4	0	15
Feb. 15	15	3	0	0	2	16
Mar. 15	16	6	0	2	1	19
Apr. 15	19	5	0	2	0	22
May-15	22	5	0	0	4	23
Jun. 15	23	4	0	2	0	25
Jul. 15	25	9	0	1	0	33
Aug. 15						
Sept. 15						
Oct. 15						
Nov. 15						
Dec. 15						

Program Max: 60

MMH

FY15	Start of Month	New admissions	DA Opt-out	Unsuccessful discharge	Graduates	End of Month
Dec. 14	45	6	0	2	6	43
Jan. 15	43	12	0	3	2	50
Feb. 15	50	4	0	1	6	47
Mar. 15	47	8	0	2	2	51
Apr. 15	51	14	0	2	11	52
May-15	52	6	0	3	6	49
Jun. 15	49	12	0	5	10	46
Jul. 15	46	7	0	2	0	51
Aug. 15						
Sept. 15						
Oct. 15						
Nov. 15						
Dec. 15						

Program Max:

STAC

FY15	Start of Month	New admissions	DA Opt-out	Unsuccessful discharge	Graduates	End of Month
Dec. 14	26	0	0	3	0	23
Jan. 15	23	0	0	2	2	19
Feb. 15	19	1	0	2	0	18
Mar. 15	18	5	0	5	5	13
Apr. 15	13	3	0	0	0	16
May-15	16	1	0	0	0	17
Jun. 15	17	3	0	2	0	18
Jul. 15	18	1	0	2	0	17
Aug. 15						
Sept. 15						
Oct. 15						
Nov. 15						
Dec. 15						

Program Max:

STAR

FY15	Start of Month	New admissions	DA Opt-out	Unsuccessful discharge	Graduates	End of Month
Dec. 14	23	0	0	0	5	18
Jan. 15	18	0	0	1	0	17
Feb. 15	17	0	0	0	0	17
Mar. 15	17	0	0	2	0	15
Apr. 15	15	4	0	2	0	17
May-15	17	3	0	1	0	19
Jun. 15	19	2	0	1	0	20
Jul. 15	20	1	0	1	4	16
Aug. 15						
Sept. 15						
Oct. 15						
Nov. 15						
Dec. 15						

Program Max: 45

Lunch & Learn

*Hosted by Judge Lela Mays and
Literacy Instruction for Texas*



Wednesday, September 16th

12:30pm-2:00pm

1610 S. Malcolm X Blvd. Suite 320 Dallas, 75226



LIFT is a STAC Court partner and works with adults who aspire to learn to read, speak English or pursue a GED. We are inviting you to lunch so you more about how we can help your clients improve their literacy and chances of a new life outside of the criminal justice system. We also want to talk about the best ways to ensure the success of our collaboration.

- LIFT services
- Class schedule
- Reporting and communication for clients
- And of course lunch!

**Please RSVP by Sept. 14. Please contact: ambersims@lift-texas.org or
214.824.2000 ext. 3205**

- ✓ The rate of illiteracy in America's correctional systems is over 60% (National Institutes of Health)
- ✓ Inmates who take part in correctional education programs are 43 percent less likely to return to prison than those who do not.