



DALLAS COUNTY
Criminal Justice Department

Behavioral Health Steering Committee

Thursday, October 15, 2015

Agenda

1. Welcome and Call to Order
2. Review/Approval of Minutes 1 - 3
3. Caruth Update *Brittany Lash* 4
4. SAMHSA Grant *Christina Gonzales* 5
5. 530 Sub Committee *Keta Dickerson* 6 - 8
6. BHLT & CSP Update *Charlene Randolph* 9 - 14
7. Jail Reports
 - Pregnant Patients *Shenna Oriabure* 15
 - Hospital Movement *Brandy Coty* 16
 - Northstar Matches *Christina Gonzales* 17
 - Homeless Report *Christina Gonzales* 18-19
8. Public Defenders Report *Lynn Richardson* 20
9. Provider Reports
 - Metrocare *Crystal Garland* 21
 - The Bridge *Jay Meaders* 22
 - IPS Reports *Enrique Morris* 23-25
10. Problem Solving Courts
 - Outpatient Competency *Brandy Coty* 26
 - DIVERT *Keta Dickerson* 27
11. Specialty Courts CSCD *Serena McNair* 28-32
12. Announcements
13. Adjourn



**Behavioral Health Steering Committee
Thursday September 17, 2015**

Meeting called to order at 8:35am

The meeting was called to order by Chief Public Defender Lynn Richardson, in the absence of Judge Kristin Wade. Ms. Richardson asked for any adjustments or corrections to the minutes. Ron Stretcher made a motion to approve the minutes as recorded, a vote was taken and the committee approved the minutes as recorded.

530 Sub-Committee

Keta Dickerson provided an update of the 530 Fund. Currently the balance for the felony account (4020) is \$55,739.23; the misdemeanor account for (4031) has a balance of \$67,845.55; for a combined total of \$123, 593.78 (*pg. 8 of the September packet.*) The subcommittee has approved the following request for the MHJD court.

- **MHJD – Treatment Request**

Christina Gonzales presented a request to utilize \$11, 098 to pay for inpatient treatment for clients in the MHJD specialty court. The request is for a total amount of \$11, 098 and will pay to cover unpaid invoices for May, June, July and August to Homeward Bound. In the past MHJD has utilized grant funds to pay for treatment; however, this year there was an increased amount of extensions and an increase in contract payment amount. The 530 sub-committee approved the request, and it is now being presented to the BHSC committee for final approval.

There was some discussion to utilizing funds previously earmarked for treatment for CSCD and possibly delaying approving the request until such matter can be determined. Kita Dickerson informed the committee if the bills are not paid prior to September 30, a letter of noncompliance will need to be done to the auditor's office. Mike Laughlin made a motion to approve the request for \$11,098 for the MHJD court to pay past invoices for treatment. Angie Bird seconded the motion, a vote was taken in the committee approved the request. (*Pg.5-9, September Packet*)

DAMH Case Manager Update

Marlene Buchanan from Metrocare services provided an update on the TACOOMI mental health caseworkers and district attorney's mental health program. The potential start date is October 15, 2015; and the program is called AIM Achieve, Inspire and Motivate, Krystal Garland from Metrocare is the contact person. Judge Birmingham has agreed to be the judge for AIM and it will focus on individual ages 17 to 24 pre-adjudication, and have first-time felonies. The program will have to 2 QMHP's and a licensed therapist utilizing the CTI-based model with the clients. CTI stands for critical time intervention, CTI focuses on working with the client early on and having very intensive treatment then stepping the client down through three phrases until they are ready to be reintegrated into the community. The program itself will maintain NADCP best practices and will adhere to the 10-key components for drug courts. Some committee members raised concern for how the program will remain at capacity and how referrals are being made to the program. Ron Stretcher asked for more details about the program and Lynn Richardson suggested that they contact Kevin Brooks, the contact person in the DAs office and it was suggested the committee reach out to Kevin to get more clarification on those types of questions. The program is still a

work in progress; however, they will keep the BHSC updated and reach out to the committee when needed for the program to be successful.

BHLT & CSP Update

Charlene Randolph reported the area of focus for most of the BHLT meetings is the Northstar redesign. Each subcommittee of the BHLT is currently working on their recommendations for the redesign and then sending them through the BHLT. Charlene reports as the days get closer she will report out any additional information. Charlene Randolph provided a break down on pg. 10 the ability to connect a client to a provider within 7 days is at 77.6% and within 30 days is at 85%. The CSP project is doing very well and there is a discussion to expand the program to Montgomery Hospital. Montgomery is being used for the pilot because it receives the overflow from Terrell State Hospital. Kudos was given to Transicare and Marium Uddin for big instrumental in getting this pilot expansion off the ground. The Specialty Aftercare Program has already kicked off; IPS will be a big player in providing outpatient treatment services as will Nexus and Homeward Bound. Chief Public Defender Lynn Richardson asked if clients in the conditional dismissal program through MH PD would be able to utilize this service as well. The concern was that the trigger for the aftercare program is the client having been involved in a Specialty Court; Ron Stretcher and Charlene Randolph both agreed to meet with Lynn Richardson to discuss the matter further. CSP is also paying for some transitional slots at Salvation Army, CSCD has 12 female beds and CSP has 8 male beds. CSCD reports there are five beds currently taken with additional steps to fill the rest of the beds shortly. Judge Mays questioned the possibility of placing a male client in the CSP beds. If there are any people that may need the CSP beds Charlene Randolph asked they contact Angie Bird with Transicare to request a bed.

Jail Reports

Pregnant Women in Jail- Shenna Oriabure reported the following numbers for pregnant women in jail; currently there are 25 pregnant women in jail, 12 sentenced, 6 have upcoming court dates and 6 without a court date. (pg. 14 of September packet)

Hospital Movement- Brandy Cody reported that for the month of August 51 inmates were deemed incompetent to stand trial, 26 were sent to the hospital and 26 were brought back from the hospital. Currently there are 58 inmates waiting to go to the hospital. (pg. 15 of September packet)

NorthSTAR Intakes - Information was provided in the September packet page 16.

Public Defender Report

Information was provided in the September packet on page 17.

Provider Reports

Metrocare - Information was provided in the September packet on page 18.

The Bridge - Information was provided as a handout in addition to the packet.

IPS Report - Enrique Morris reports there has been a 50% reduction in admissions from specialty courts. However, he reports this is not alarming and seems to be the overall pattern with admissions. There has been an increase in the successful discharges by 17%, bringing the amount of successful discharges up to 56%. Overall for those in the program in the month of August; 55 cases were approved for phase advancement, 26% were retained and 19% were elevated. Those in specialty courts who are in continued care are advancing through the program at good rates. As a side note, there is a drop in the report of poly-substance and methamphetamine use, IPS will research if this is a trend specific to Dallas or if this is a nationwide trend. There has been a slight increase in PCP use, but the decrease in poly-substance and methamphetamine is statistically important.

Problem Solving Courts

Outpatient Competency Restoration- Brandy Coty reported for the month of August 5 cases were added to misdemeanor OCR and 2 were successfully graduated. On the felony 4 cases were added and successfully graduated 1. Ending with a total of 29 participants in misdemeanor and felony OCR combined. (pg. 22, September packet)

DIVERT- Information was provided in the September packet on page XX.

Specialty Courts CSCD

Serena McNair reported the following numbers for the Probation Department; ATLAS ended with 22, DDC ended with 31, MH ended with 52, STAC ended with 16 and STAR ended with 18 for a total of 138. (pgs. 24-28 September)

Announcements

LIFT – Judge Mays reported on LIFT (Literacy Instruction for Texas) training she attended. LIFT provides pre-GED classes, educational assessments and ESL classes. While at the training STAC court provided a presentation on Specialty Courts in Dallas County, and LIFT provided a presentation on what services they provide. She also reports there are many resources available at City Square, that many of the clients may be eligible to receive. Lynn Richardson asked if it would be possible to arrange a tour of the facility, Christina Gonzales will follow up with City Square staff.

OCR - Judge Skemp reports that his numbers are low; however, he has seen the people coming into the program are requiring more from the case managers. He also thinks misdemeanor courts are using public defenders less, creating a gap in the competency evaluation orders. As many private bar attorneys may not know signs of incompetency and are less likely to order an evaluation. Judge Skemp thinks the numbers will decrease even more as some Class A/B offenses are lowered to Class C misdemeanors. He reports that he has seen an increase in 17 yr. olds that are referred to the program; however, currently there are no resources for them to receive treatment, causing a lag in services and restoring them to competency.

STAR – Judge Frizell who presides over STAR court, reports since she has taken over, she is actively changing some of the policies and procedures of the court. She has graduated many of the women that have been in the program for more than 2 years and is setting the program length at 12-18 months. She is hoping to see an increase in the number of graduates for the next year. Judge Frizell also commented on training for Specialty Court Judges, asking if it was possible to create training for those that interact with offenders that have a mental illness. The training would primarily be for Judges with Specialty Court Programs; however anyone else in the system would have the ability to participate in the training. Lynn Richardson suggested to Judge Frizell that she work with BHSC and caseworkers to create an informational presentation.

Jay Meaders –Reported on the VI-SPDAT and its current use at the Bridge. The VI-SPDAT is the Vulnerability Index - Service Prioritization Decision Assistance Tool (VI-SPDAT), a street outreach tool currently in use in more than 100 communities. The VI helps determine the chronicity and medical vulnerability of homeless individuals, and the SPDAT, is an intake and case management tool to help service providers allocate resources in a logical, targeted way. He reports that hopefully in the near future all homeless service providers will utilize both the VI-SPDAT and the HMIS (homeless database) as a guide to providing services to clients in need.

Adjourn

The meeting was adjourned at 9:55am by Chief Public Defender Lynn Richardson.

Caruth Smart Justice Planning Grant

Caruth Smart Justice Planning Grant: Status Update – October 2015

The Caruth Smart Justice Planning Grant has been continuing forward with in the Phase I community assessment for the Caruth Smart Justice Planning Grant, and the Grant Planning Team is on track to provide the W. W. Caruth, Jr. Foundation at the Communities Foundation of Texas with a completed community assessment in January 2016. Following the assessment, the planning process will shift into implementation planning that will culminate in a final plan to propose to the Foundation in June 2016. The planning process includes both community-wide events and intercept-specific assessments, applying the Sequential Intercept Model (SIM).¹ This model is the organizing framework underlying the Caruth Smart Justice Planning Grant, and general community understanding is key to process transparency and systemic transformation. The Grant Planning Team hosted a training, at the request of community partners and stakeholders, to provide a general overview on October 6, 2015. A copy of that presentation is attached. Progress is summarized below by each of the five “intercept points” of the model.

Intercept 1 (Law Enforcement) – The Grant Planning Team has been working in partnership with the Caruth Police Institute to create protocols and questions for law enforcement focus groups. Focus groups will be held across all seven divisions of the Dallas Police Department, as well as the Dallas County Sheriff’s Office (DCSO) with both patrol officers and supervisors beginning in October and through November. Other municipalities will also be involved.

Intercept 2 (Initial Detention/Initial Court Hearings) – Flow mapping of the processing of individuals with mental illness throughout the Dallas County justice system is largely completed and is being finalized with involved stakeholders in late October. This rapid, in-depth assessment process is being led by Dr. Tony Fabelo and his team from the Justice Center at the Council of State Governments. It began with a broad-based engagement of community stakeholders and partners in August. The initial flow assessment and identified “red flags” for improvement targeting were then reviewed and revised in late September with stakeholders and partners. The final draft will be completed in early to mid-October.

Intercept 3 (Jails/Courts) / Intercept 4 (Re-Entry) / Intercept 5 (Community Corrections) – In September, the Grant Planning Team began identifying potential key informants in the community who can speak to capacity to serve justice-involved individuals with mental illness. Interviews are starting in October to obtain data on current community capacity to serve individuals in the jail and through specialty courts (Intercept 3), upon re-entry (Intercept 4), and to help people at high risk of re-offense to stay in the community (Intercept 5).

¹ See http://gainscenter.samhsa.gov/pdfs/integrating/GAINS_Sequential_Intercept.pdf for a one-page overview.



Grants



Grants to Expand Substance Abuse Treatment Capacity in Adult and Family Drug Courts

Short Title: SAMHSA Treatment Drug Courts

Modified Announcement

Language regarding requirements for MAT on pages 9 & 10 has been revised.

The Application Due Date has been extended to April 10, 2015.

Request for Applications (RFA) Information

FOA Number: TI-15-002

Posted on Grants.gov: Monday, January 26, 2015

Application Due Date: Friday, April 10, 2015

Catalog of Federal Domestic Assistance (CFDA) Number: 93.243

Intergovernmental Review (E.O. 12372):

Applicants must comply with E.O. 12372 if their state(s) participates. Review process recommendations from the State Single Point of Contact (SPOC) are due no later than 60 days after application deadline.

Public Health System Impact Statement (PHSIS) / Single State Agency Coordination:

Applicants must send the PHSIS to appropriate State and local health agencies by application deadline. Comments from Single State Agency are due no later than 60 days after application deadline.

Description

The Substance Abuse and Mental Health Services Administration (SAMHSA), Center for Substance Abuse Treatment (CSAT) is accepting applications for fiscal year (FY) 2015 Grants to Expand Substance Abuse Treatment Capacity in Adult and Family Treatment Drug Courts. The purpose of this program is to expand and/or enhance substance abuse treatment services in existing adult and family "problem solving" courts, which use the treatment drug court model in order to provide alcohol and drug treatment (including recovery support services supporting substance abuse treatment, screening, assessment, case management, and program coordination as well as family-focused services in the case of Family Treatment Drug Courts) to defendants/offenders. Grantees will be expected to provide a coordinated, multi-system approach designed to combine the sanctioning power of treatment drug courts with effective treatment services to break the cycle of criminal behavior, child abuse and neglect, alcohol and/or drug use, and incarceration or other



Behavioral Health Steering Committee 530 Fund Sub-Committee

Minutes for October 7, 2015

Keta Dickerson called the meeting to order at 9:35 am and asked for a motion to approve the minutes. Judge Wade made a motion to accept the minutes as recorded, Lynn Richardson seconded the motion and the minutes were accepted as recorded by the group.

530 Fund Balance

An update of the 530 Fund Balance was provided, currently the balance for the Felony account (4020) is \$60,976.74; the Misdemeanor account (4031) is \$73,511.41, for a total of \$133,968.15. The auditors department reports there is additional time to close out the month of September, not all credits or debits have been posted at this time. They will have an accurate balance closer to October 16, 2015.

530 Requests

Christina Gonzales presented a request to utilize 530 funds. The MHJD court would like to utilize \$500.00 for their yearend program, the fund will pay for food from Bakers Ribs. This is the first request from MHJD for FY 2016, related to incentives, graduations, and Drug Court Programs. There are currently funds in the budget for this request. Lynn Richardson made a motion to approve the request for funding, Serena McNair seconded the motion. The motion was approved by the subcommittee and will go to the Behavioral Health Steering Committee for final approval on October 15, 2015.

CSCD Study with UTD

Dr. Johansson-Love was unable to attend the 530 Sub-Committee meeting; she did send an email with the following information. UTD is finalizing the 4-c and Mental health court data with the requested DPS data. The first part of the divert data has been submitted and more will be uploaded next week. There is currently no 4th court selected. There is a question if it is possible to reduce the cost if only 3 courts were selected. Leah Gamble will follow up with Dr. Johansson-Love or JP to see if it is possible to recoup some of the funds.

Lorena Villalva; probation officer for PRIDE court, reports the study completed by UTA on PRIDE court has been finished. She will request a copy of the study UTA completed and will provide it to the sub-committee.

Adjourn

The meeting was adjourned at 9:55am and will reconvene on 11/11/15 @9:30am.

**530 Fund FY 15
Balances/Expenditures
Summary Page**

<u>Month</u>	<u>Beg. Bal. Misd 4031</u>	<u>Expense</u>	<u>Credit</u>	<u>End Bal</u>	<u>Beg. Bal. Fel 4020</u>	<u>Expense</u>	<u>Credit</u>	<u>End Bal</u>
Oct	\$144,700.15	\$23,612.53	\$8,424.62	\$129,512.24	\$61,572.46	\$17,286.00	\$3,854.01	\$48,140.47
Nov	\$129,512.24	\$5,243.66	\$6,982.21	\$131,250.79	\$48,140.47	\$0.00	\$3,763.56	\$51,904.03
Dec	\$131,250.79	\$5,818.67	\$8,642.37	\$134,074.49	\$51,904.03	\$0.00	\$4,037.01	\$55,941.04
Jan	\$134,074.49	\$8,609.03	\$7,362.34	\$132,827.80	\$55,941.04	\$2,965.00	\$3,264.81	\$56,240.85
Feb	\$132,827.80	\$30,181.18	\$8,782.76	\$111,429.38	\$56,240.85	\$2,055.00	\$4,750.36	\$58,936.21
Mar	\$111,429.39	\$5,257.21	\$9,823.22	\$115,995.40	\$58,936.21	\$627.40	\$5,126.30	\$63,435.11
Apr	\$115,995.40	\$12,757.18	\$8,220.12	\$111,458.34	\$63,435.11	\$28,539.53	\$4,974.85	\$39,870.43
May	\$111,458.34	\$25,333.20	\$8,090.88	\$94,216.02	\$39,870.43	\$1,259.83	\$3,877.88	\$42,488.48
June	\$94,216.02	\$5,257.18	\$8,715.20	\$97,674.04	\$42,488.48	\$0.00	\$5,009.34	\$47,497.82
July	\$97,674.04	\$7,885.79	\$8,215.35	\$98,003.60	\$47,497.82	\$975.00	\$4,903.35	\$51,426.17
Aug	\$98,003.60	\$38,235.20	\$8,086.15	\$67,854.55	\$51,426.17	\$0.00	\$4,313.06	\$55,739.23
Sep	<u>\$67,854.55</u>	<u>\$0.00</u>	<u>\$10,136.86</u>	<u>\$73,511.41</u>	<u>\$55,739.23</u>	<u>\$0.00</u>	<u>\$5,237.51</u>	<u>\$60,976.74</u>
Current Totals	\$67,854.55	\$168,190.83	\$101,482.08	\$73,511.41	\$51,426.17	\$53,707.76	\$53,112.04	\$55,739.23
Ending Bal Misd/Fel	<u>\$129,250.64</u>	Avg Mo. Credit	\$8,456.84	Avg Mo. Credit	\$4,426.00			

Comments:



Dallas County

Department of Criminal Justice

In efforts to continue financial support of Dallas County Problem Solving Courts the following criteria has been established when requesting use of 530 funding. The Behavioral Health Steering Committee will review all 530 requests. Approved requests are then forwarded to Commissioner's Court, who has final authority over 530 funds.

Funds will be utilized to pay for food from Bakers Ribs for Mental Health Jail Diversion year end program. This is the first request from MHJD for FY 2016, related to incentives, graduations, and Drug Court Programs. There are currently funds in the budget for this item.

Item	Unit Cost	Units	Total Cost
Year End Program	15.00	33	500.00

1. The date the court was certified by the Office of the Governor, Criminal Justice Division. 07/01/2004
2. Provide to BHSC your court's annual progress reports provided to PPRI (CJD annual report) for the last two fiscal years, when applicable.
Provided to 530 Sub-Committee and accepted.
3. Current fiscal year outcomes to include, (number active at start of fiscal year; number of new admissions; number of successful graduations; number of terminations; current number of enrollees) and monthly updates.
Provided to 530 Sub-Committee and accepted.
4. Listing of all your court's fund sources to include grants, federal funds, donations and state or local funding.
Office of the Governor, State Grant
5. List any additional requests for funding the event; include the status of the event.
No additional requests have been made.
6. Justification for training, including lasted attended, when applicable.
Not applicable.

SEPTEMBER 2015 MONTHLY UPDATE

Dallas County Crisis Services Program	Program Specific and Systems Update	Summary of VO's Monthly Activities	Numeric Outcomes Reporting
1	Adapt Community Solutions (ACS) - Targets members released from jail using both ACS to ensure continuity of care.	Conducted case consultations on approximately 8 cases this month	VO-CSP Outcomes Report
2	Transicare Post Acute Transitional Services (PATS) - Targets high utilizers released from jail with more intensive need to ensure continuity of care.	<p>Available for case consults/clinical support for Transicare Post-Acute Transitional Services (PATS)-Clinical Rounds</p> <p>Updated Flags-add/discharges-26-Monthly reconciliation (45 flags)</p> <p>Supported 7-day after-care appts. (4-ICR/3 jail discharges)</p>	Flags in system - VO outcomes reports in progress.
3	After-care Extension IOP/SOP (SUD) - Provides extension of SUD supportive services when VO's IOP/SOP benefits have been completed and exhausted	Reviewed 44-50 members for extended after-care services to ensure IOP/SOP benefit exhaustion	Not Applicable
4	ACT FDU - Provides ACT for high utilizers of the legal system (Attending work-group meetings)	Clinical Review of cases for appropriate LOC/recommendations on 10 FDU referrals	Not Applicable
5	<p>CSP-Systemic Operations</p> <p>Initiate system improvements for decreased consumer wait times for prescriber appts.</p> <p>Reviewing 46B (forensic case) to encourage civil commitment</p> <p>Continuing to develop program infrastructure for After-care Engagement Package (AEP)</p>	<p>Initiated conference call and will assist in tracking wait times to promote system improvement</p> <p>Initiated conference call, encourage system review of this process</p> <p>Coordinated phone conference/ develop a preliminary workflow</p>	<p>Not Applicable</p> <p>Not Applicable</p> <p>Not Applicable</p>

ACS 1115 CSP Monthly Production Report

	Past Year Average	Oct-14	Nov-14	Dec-14	Jan-15	Feb-15	Mar-15	Apr-15	May-15	Jun-15	Jul-15	Aug-15	AVERAGE	TOTAL
Total Service Episodes:	449	741	479	308	393	573	713	629	620	660	861	666	604	6,643
Total Unique Consumers:	328	740	444	239	274	462	559	518	402	399	560	433	457	5,030
Percentage Change to DY3		225.50%	135.30%	72.83%	83.49%	140.78%	170.34%	157.85%	122.50%	121.58%	170.64%	131.95%		
Total Encounters by Type:														
Triage		741	479	308	393	573	713	629	620	660	861	666	604	6,643
Care Coordination		1420	1297	1441	1425	2160	3032	2965	2668	2767	3520	3327	2366	26,022
F2F Encounter		157	145	173	190	247	310	340	285	299	367	357	261	2,870
TOTAL Encounters:		2318	1921	1922	2008	2980	4055	3934	3573	3726	4748	4350	3230	35,535

Recidivism 10/1/14 - 8/31/15

Triages 12	4695
Bookins 12	1237
Recidivism % 12 - 12	26.35%
Traiges 6	2508
Bookins 6	415
Recidivism % 6 - 6	16.55%
Traiges 6	2508
Bookins 12	952
Recidivism % 6 - 12	37.96%

Frank Crowley Specific Report

	Oct-14	Nov-14	Dec-14	Jan-15	Feb-15	Mar-15	Apr-15	May-15	Jun-15	Jul-15	Aug-15	AVERAGE	TOTAL
Service Episodes:	680	435	267	352	535	650	572	572	614	795	652	557	6,124
Unique Consumers:													
By N* ID	651	382	182	217	409	489	439	337	336	452	387	389	4,281
By Client ID	28	18	20	18	15	18	25	22	22	44	34	24	264
TOTAL Unique Consumers:	679	400	202	235	424	507	464	359	358	496	421	413	4,545
TOTAL Unique Consumers as a %:	99.85%	91.95%	75.66%	66.76%	79.25%	78.00%	81.12%	62.76%	58.31%	62.39%	64.57%		
Unique F2F:													
By N* ID	83	67	96	106	150	220	220	154	152	198	208	150	1,654
By Client ID	17	14	8	10	10	13	13	15	15	18	23	14	156
TOTAL Unique F2F:	100	81	104	116	160	233	233	169	167	216	231	165	1,810
TOTAL Unique F2F as a %:	93%	76%	76%	75%	76%	89%	80%	69%	64%	69%	67%		
F2F Percentage:	15.88%	24.60%	50.94%	43.75%	39.44%	40.15%	51.05%	42.66%	42.18%	39.37%	52.91%	39.68%	39.68%
Encounters by Type:													
Triage	680	435	267	352	535	650	572	572	614	795	652	557	6,124
Care Coordination	1057	1023	1157	1160	1929	2705	2630	2407	2539	3183	3215	2091	23,005
F2F Encounter	108	107	136	154	211	261	292	244	259	313	345	221	2,430
TOTAL Encounters:	1845	1565	1560	1666	2675	3616	3494	3223	3412	4291	4212	2869	31,559
Female:													
Black	128	77	47	40	75	120	98	68	69	82	66	79	870
White	61	38	23	22	39	38	42	39	40	49	42	39	433
Hispanic	33	8	3	8	20	22	17	17	11	26	29	18	194
Other					1	4					1	2	6
Unknown		3		1	1	1	2	1			1	1	
TOTAL Female:	222	126	73	71	136	185	159	125	120	157	139	138	1,503
Male:													
Black	282	197	81	106	193	204	214	145	140	195	161	174	1,918
White	107	52	29	36	56	70	61	61	63	101	79	65	715
Hispanic	65	21	13	20	34	40	27	24	34	40	39	32	357
Other	2	3	1	1	4	6	3	2		2		3	24
Unknown	1	1	5	1	1	2		2	1	1	3	2	18
TOTAL Male:	457	274	129	164	288	322	305	234	238	339	282	276	3,032

**Transicare Reporting
Crisis Services Project**

		2014-10	2014-11	2014-12	2015-01	2015-02	2015-03	2015-04	2015-05	2015-06	2015-07	2015-08
1	Beginning Census	36	34	42	48	58	47	62	65	62	69	60
2	REFERRALS	18	27	42	31	7	53	16	29	37	45	41
	ACS	9	16	25	19	7	37	7	17	22	29	28
	Comp	9	11	17	12	0	17	9	12	15	16	13
3	Admissions											
4	Referred Admitted	4	8	12	12	2	21	7	9	11	18	14
5	No Admit Client Refusal	1		1	1				3	2	0	0
6	No Admit Criteria	6	7	8	9	1	10	3	8	10	12	11
7	No Admit Structural	1	6	6	4		2	1	1	2	3	5
8	Pending	6	6	15	5	4	20	5	8	12	12	11
9	<i>PRIOR PENDING</i>											
10	Pending Admitted		5	4	7	3	4	9	6	9	2	8
11	No Admit Client Refusal		1	3			1	3		1	0	2
12	No Admit Criteria	3	3		2	2		2		1	3	3
13	No Admit Structural		1	1	4		2	2	1	0	2	2
14												
15	Total Admissions	4	13	16	19	5	25	16	15	20	20	22
16												
17	Discharges											
18	Success Transfer	1	3	2	4	8	5	3	4	5	6	2
19	DC Midterm Disengage	1		1		1	1	3	4	2	7	3
20	DC Rapid Disengage	3	1	1	1	1	1		1	0	0	3
21	DC Structural	1	1	6	4	6	3	7	9	6	16	11
22	Total Discharged	6	5	10	9	16	10	13	18	13	29	19
23	Active End Of Month	34	42	48	58	47	62	65	62	69	60	63
24												
25	Outcome Data											
26	<i>Terrell State Hospital Linkages</i>											
27	≤7 Connect To Prescriber	2	4	4	2	3	7	7	3	4	6	4
28	≤30 Connect To Prescriber	2							1	0	1	0
29	Missed Metric			4	1	1	0	0	0	0	2	0
30	Total Released	4	4	8	3	4	7	7	4	4	9	4
31												
32	Cummulative ≤7 Connect %	50.0%	75.0%	62.5%	63.2%	65.2%	73.3%	78.4%	78.0%	80.0%	77.8%	81.5%
33	Cummulative ≤30 Connect %	100.0%	100.0%	75.0%	73.7%	73.9%	80.0%	83.8%	85.4%	86.7%	85.2%	85.2%
34	Missed Metric	0.0%	0.0%	25.0%	26.3%	26.1%	20.0%	16.2%	14.6%	14.6%	14.8%	14.8%
35	<i>Unduplicated Served</i>											
36	Monthly Unduplicated	56	53	72	81	65	90	84	90	91	101	90
37	DSRIP YTD Unduplicated Served	56	74	103	136	140	182	199	226	257	301	322
38												
39	<i>Encounter Data</i>											
40	F2F Encounter	297	226	451	497	376	409	561	490	516	478	323
41	Care Coord	174	138	177	209	178	177	246	255	260	247	151
42	Total	471	364	628	706	554	586	807	745	776	725	473
	<i>Consults</i>											
43	Referral							32	0	0	16	0
44	Pending							29	16	10	15	13
45	Resolved							3	13	6	9	2

Timberlawn Specific Report

	Oct-14	Nov-14	Dec-14	Jan-15	Feb-15	Mar-15	Apr-15	May-15	Jun-15	Jul-15	Aug-15	AVERAGE	TOTAL
Service Episodes:	61	44	41	41	38	63	57	48	46	66	14	47	519
Unique Consumers:													
By N° ID	55	37	33	30	32	46	49	37	22	50	8	36	399
By Client ID	6	7	4	9	6	6	5	6	19	14	4	8	86
TOTAL Unique Consumers:	61	44	37	39	38	52	54	43	41	64	12	44	485
TOTAL Unique Consumers as a %:	100%	100%	90%	95%	100%	83%	95%	90%	89%	97%	86%	93%	93%
Unique F2F:													
By N° ID	45	33	32	28	30	40	47	33	19	43	8	33	358
By Client ID	3	5	2	6	5	5	1	5	17	8	4	6	61
TOTAL Unique F2F:	48	38	34	34	35	45	48	38	36	51	12	38	419
TOTAL Unique F2F as a %:	98%	100%	92%	94%	97%	92%	100%	93%	90%	94%	100%	95%	95%
F2F Percentage:	80.33%	86.36%	90.24%	87.80%	94.74%	77.78%	84.21%	85.42%	86.96%	81.82%	85.71%	84.78%	84.78%
Encounters by Type:													
Triage	61	44	41	41	38	63	57	48	46	66	14	47	519
Care Coordination	363	274	284	265	231	327	335	261	228	337	112	274	3017
F2F Encounter	49	38	37	36	36	49	48	41	40	54	12	40	440
TOTAL Encounters:	473	356	362	342	305	439	440	350	314	457	138	361	3976
Female:													
Black	14	6	9	7	7	12	13	9	9	10	2	9	98
White	3	7	3	6	3	5	4	5	8	14	4	6	62
Hispanic	8	7	2	7	7	3	7	8	5	3	1	5	58
Other	2			1		3			1	1		2	8
Unknown	2	2	1	2	1		1			5		2	9
TOTAL Female:	29	22	15	23	18	23	25	22	23	33	7	22	226
Male:													
Black	16	14	9	6	8	12	10	8	9	12	1	10	105
White	9	3	5	2	8	7	6	9	4	12	3	6	68
Hispanic	6	5	4	5	3	7	10	3	4	7	1	5	55
Other	1		2		1	3		1				2	8
Unknown			2	3			3		1			2	9
TOTAL Male:	32	22	22	16	20	29	29	21	18	31	5	22	245
Age of Triage Encounters:													
Adult	38	30	30	24	32	32	34	25	31	50	9	30	335
Minor	21	11	5	10	5	17	15	17	9	6	2	11	118
Uncollected	2	3	2	5	1	3	5	1	1	8	1	3	32
TOTAL Age of Triage Encounters:	61	44	37	39	38	52	54	43	41	64	12	44	485
Age of F2F Encounters:													
Adult	31	30	29	24	31	30	36	23	27	44	10	29	315
Minor	17	8	5	10	4	15	12	15	9	6	2	9	103
Uncollected	0	0								1		0	1
TOTAL Age of F2F Encounters:	48	38	34	34	35	45	48	38	36	51	12	38	419
F2F Outcomes:													
23 hours obs													
Crisis Residential		2	5	1	3	3	6	1	1	4	1	3	27
Hotline/MCOT				1								1	
Inpatient- Civil	9	6	5	5	2	8	7	10	5	11	2	6	70
Intensive Outpatient	4	3	2	1	6	4	5	3	5	6	1	4	40
Jail-based Psychiatric Care										1			
Left Against Clinical Advice				1								1	
Medical Referral	3	1	4	2	2			3	2			2	17
No Behavioral Health Services Indicated				1				1	1	1	2	1	
Other Higher Level of Care		1										1	1
Partial Hospitalization Program	1	1										1	2
Refused Recommended Treatment										1			
Residential-CD	2	2										2	4
Residential-SUD/ COPSD		1	1	2	2	2	2			3	1	2	14
Routine Outpatient	25	20	12	19	15	19	19	15	18	14	2	16	178
School-based services			1			1						1	2
Unable to complete assessment						1	2					2	3
Urgent Care Clinic	4	1	2	3	5	7	6	6	4	10	3	5	51
TOTAL Outcomes	48	38	34	34	35	45	48	38	36	51	12	38	409
Diversion Rate	81.25%	84.21%	85.29%	85.29%	94.29%	82.22%	85.42%	73.68%	86.11%	78.43%	83.33%		82.89%

Forensic Diversion Unit (FDU) Report

	Oct-14	Nov-14	Dec-14	Jan-15	Feb-15	Mar-15	Apr-15	May-15	Jun-15	Jul-15	August
Beginning Census	40	39	38	39	39	35	34	34	37	41	44
Number of Referrals Received from CSP											
Adapt	1	2	2	1	1	0	2	8	7	13	3
Metrocare	0	0	0	0	0	1	0	0	0	0	0
Transicare	0	0	0	0	1	0	1	2		0	3
Number of Admissions	1	0	2	1	2	0	3	3	5	3	1
Number Discharged	2	1	1	1	4	3	0	0	2	2	0
Number not admitted due to:											
Client qualifies for ACT	0	0	1	0	0	0	0	0	0	1	1
Client qualifies for other programs	0	0	0	0	0	0	0	0	3	1	0
Client didn't meet level of need required	0	0	0	0	0	1	0	0	0	0	0
Other reasons	0	0	0	0	0	0	0	0	0	3	3
Average Service Utilization:											
Average hours seen	10.72	8.76	7.8	8.3	9.2	7	7.31	9.22	12.27	10.92	9.73
Encounter Breakdown:											
Face to Face	450	245	357	497	419	236	302	519	469.23	653	555
Service Coordination	69	35	43	76	81	69	75	94	75	57	62
Number of clients accessing:											
Emergency Room (medical)	1	1	0	0	0	0	0	1	0	0	0
23-hour observation (psych)	1	1	1	0	0	1	0	2	0	0	0
Inpatient (med/ psych)	8	0	2	2	1	2	0	2	0	2	0
Jail book-in	2	4	1	1	0	0	1	3	5	2	3
Reasons for Discharge:											
Graduate	0	0	0	0	3	0	0	0	0	0	0
Client Disengagement	1	0	0	0	1	1	0	0	2	0	0
Extended Jail stay (case-by-case basis)	1	0	1	1	2	0	1	1	0	0	0
Other Intervening factors	0	1	0	0	0	0	0	0	1-TJC	0	3
End of Month Stats:											
Number of Active FDU clients end of month	39	38	39	39	37	34	34	37	41	44	42
Number of Unique Consumers	0	0	0	0	0	1	3	3	5	12	1
Number of clients on Waiting List	0	0	0	0	0	0	Pending 6	pending 6	4	3 pending	7
Average Length of stay on FDU (month)	11.72	12.38	12.07	12.45	12.15	12.49	12.18	12.65	12.32	12.6	12.99
Maximum Census	45	45	45	45	45	45	45	45	45	45	45

the consumers on the "waiting"

Pregnant Patients

	1st Half 2014	1st Half 2015	September 2014	September 2015
In Jail (atleast one day in month-not total at end of the month)	288	301	41	57
Probation Violations	76	63	13	18
New offenses/BF/IB only	178	208	23	36
Parole Violations only	5	10	2	-
Other reason in jail	29	20	3	3
Released Since Last Month	106	140	16	27
Released to SAFPF	1	3	-	1
Released to Nexus Recovery	10	18	4	2
Released to state hospital	0	6	-	-
Released to other treatment	4	2	1	-
Released to TDCJ (ID or SJ)	12	10	1	3
Released on Probation	13	22	3	5
Released on bond	27	36	1	4
Released to Other Agencies	15	11	1	1
Released for other Reasons	24	32	5	11
New Cases Since Last in Month	96	110	15	26
Emails To Court Coordinators for settings	12	18	3	3
Email Notifications to Probation	24	20	3	3
Email Notifications to TDCJ desk (Sgt. Temple)	16	10	2	2
Pregnant Patient Interviews for Referral Purposes		0	-	-
Nexus Notifications		0	1	-

Jail Competency Stats 2015

	Jan	Feb	March	April	May	June	July	Aug	Sept	Oct	Nov	Dec	Totals
Active													
New Evals - Incompetent	48	61	39	38	43	41	46	51	41				408
Waiting for the hospital - End of month	31	43	73	84	79	71	55	58	52	0	0	0	
Less than 30 days	24	26	55	33	29	35	25	33	29				
30 to 60 days	5	12	13	38	24	16	12	9	8				
Greater than 60 days	2	5	5	13	26	20	18	16	15				
Returned to jail from the hospital	13	8	13	15	22	16	23	26	22	0	0	0	158
Felony	8	7	10	11	16	12	18	22	19				
Average length of stay (days)	105	102	80	85	100	79	101	124	100				
Misdemeanor	5	1	3	4	6	4	5	4	3				
Average length of stay (days)	91	56	84	80	71	54	64	66	75				
Previous return legal case pending	27	43	30	36	23	36	26	23	20	0	0	0	264
Less than 30 days	5	12	8	9	0	0	0	0	0				
1 to 3 months	7	13	6	10	6	20	12	11	12				
3 to 6 months	10	11	8	5	7	4	5	4	2				
> 6 months	5	7	8	12	10	12	9	8	6				
Closed													
New Evals - Competent	28	38	37	36	33	33	39	27	40				311
Admitted to the state hospital	35	18	35	13	34	38	40	26	34	0	0	0	273
Felony	24	11	22	8	24	21	26	17	23				
Average wait for a hospital bed (days)	61	59	56	54	54	79	76	50	69				
Misdemeanor	11	7	13	5	10	17	14	9	11				
Average wait for a hospital bed (days)	39	39	49	42	42	60	45	39	37				
Hospital Return Legal Case Resolved	22	11	23	29	20	22	16	27	21	0	0	0	191
Less than 30 days	16	2	6	7	8	8	7	18	8				
1 to 3 months	5	1	9	14	9	11	5	3	9				
3 to 6 months	1	7	3	2	3	1	3	4	2				
> 6 months	0	1	5	6	0	2	1	2	2				
Case dismissed at the hospital	1	5	6	12	0	6	4	4	5	0	0	0	43
Felony	0	0	1	1	0	1	0	0	0				
Misdemeanor	1	5	5	11	0	5	4	4	5				

Monthly NorthSTAR Intakes

Month-Year	Total inmates booked into the jail with a NorthStar match	Book in Totals for the month	% of people with a NorthStar match booked into the jail
2007 Total	6501	93413	7%
2008 Total	8200	99580	8%
2009 Total	10636	98407	11%
2010 Total	12994	96245	14%
2011 Total	15810	90429	17%
2012 Total	17036	83524	20%
2013 Total	17762	81010	22%
Jan-14	1464	6639	22%
Feb-14	1308	6109	21%
Mar-14	1399	6261	22%
Apr-14	1535	6587	23%
May-14	1430	6456	22%
Jun-14	1375	5832	24%
Jul-14	1489	6453	23%
Aug-14	1523	6227	24%
Sep-14	1427	5936	24%
Oct-14	1504	6072	25%
Nov-14	1213	5429	22%
Dec-14	1252	5167	24%
2014 Total	16919	73168	23%
Jan-15	1430	5941	24%
Feb-15	1231	5164	24%
Mar-15	1545	5979	26%
Apr-15	1584	6350	25%
May-15	1502	5901	25%
Jun-15	1440	5848	25%
Jul-15	1533	6357	24%
Aug-15	1479	6103	24%
Sep-15	1358	5697	24%
2015 Total	13102	53340	25%

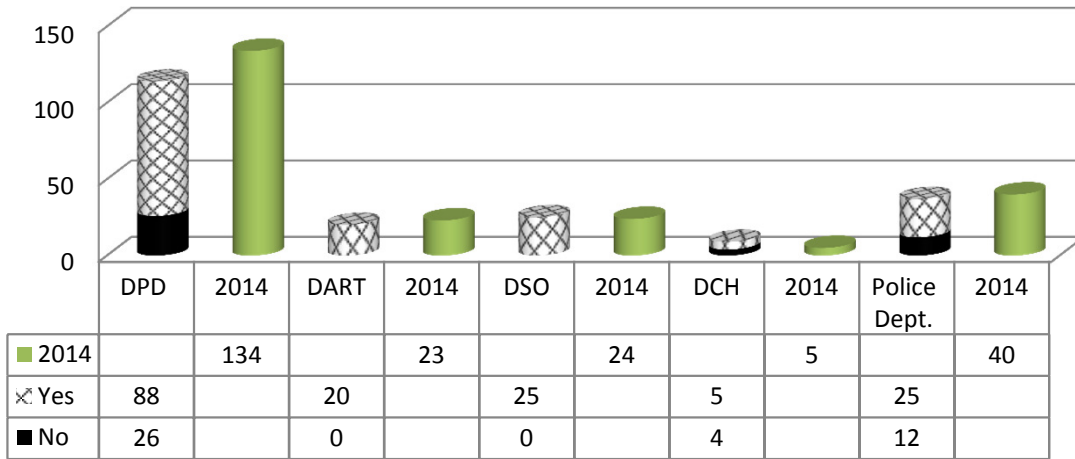
Multi-Bookin NorthSTAR Tracking

2015	# Times Booked In	# Unique Clients
	Bookins 13	1
	Bookins 12	0
	Bookins 11	3
	Bookins 10	4
	Bookins 9	5
	Bookins 8	5
	Bookins 7	12
	Bookins 6	28
	Bookins 5	59
	Bookins 4	102
	Bookins 3	426
	Bookins 2	1562
	Bookins 1	7801
Total		10008
As of 10/6/15		

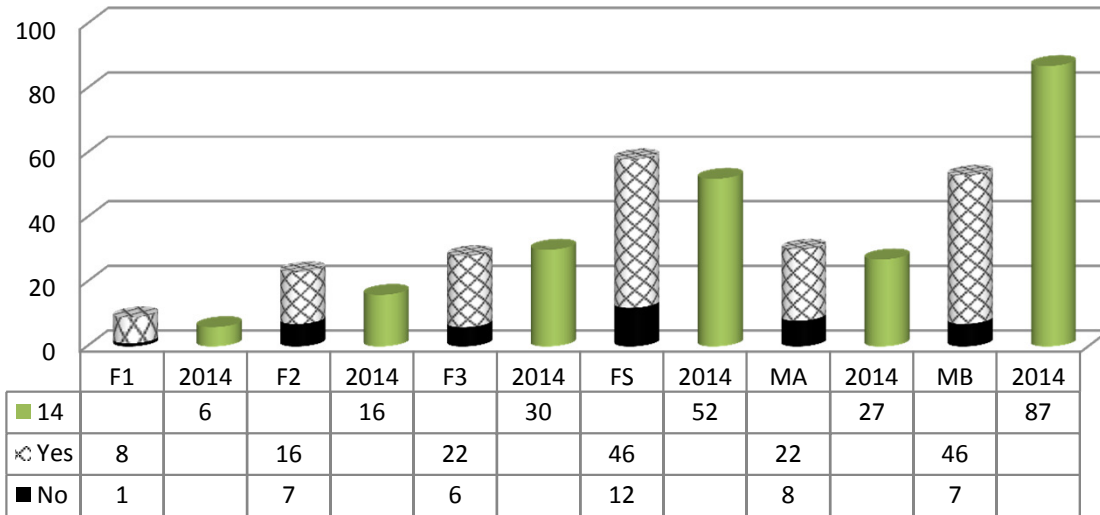
Homeless Jail Population September 2015

	2014	2015
Unique Individuals	220	201
Total Number of Arrestes	227	206
Days In Jail	16,406	8,786
Average Number of Days in Jail	71	43

Arresting Agency

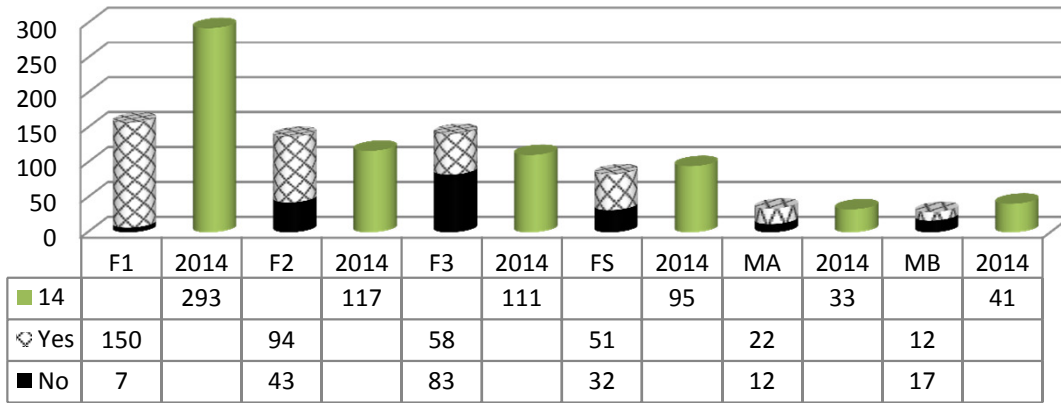


Degree of Offense

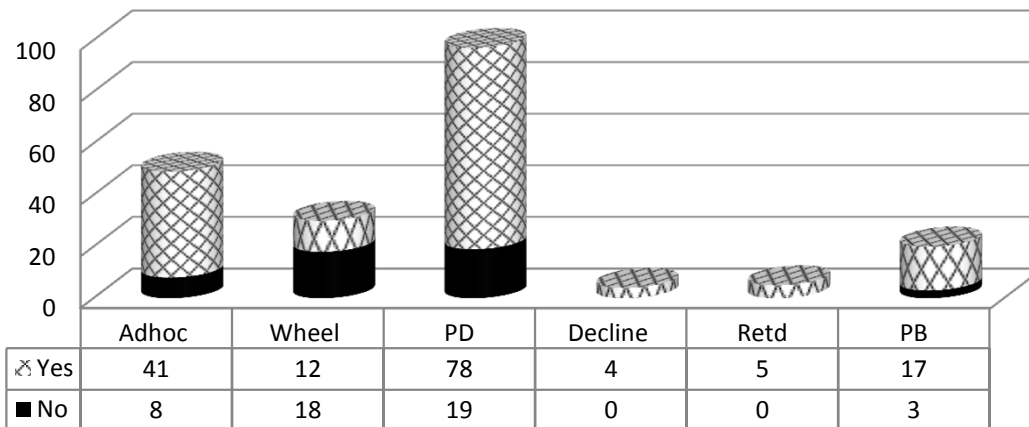


Homeless Jail Population September 2015

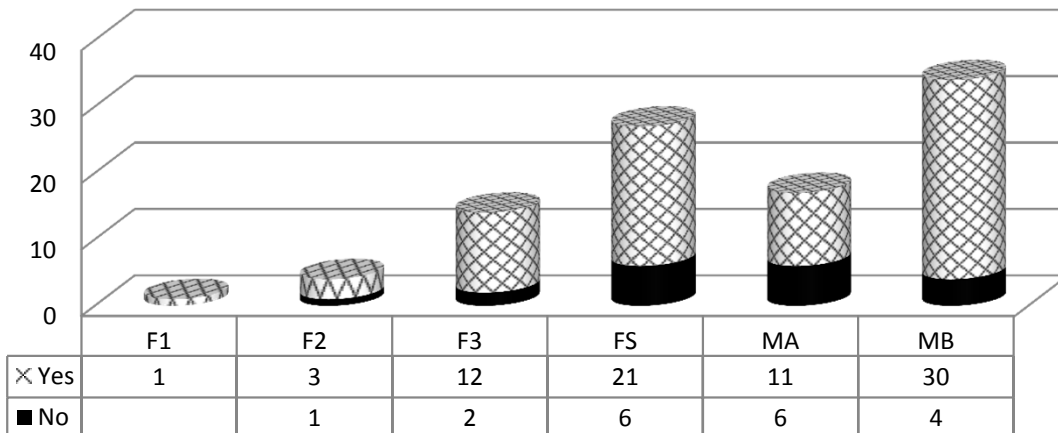
Ave. Days in Jail



Attorney Type



Public Defender Cases Only



Public Defender's Office

HARRY INGRAM		FY2015 ATLAS STATISTICS											203/HAWTHORNE				
MONTH	BEGINNING # OF PENDING CASES	+NEW CASES RECEIVED THIS MONTH	=TOTAL CASES	TBJ	TBC	PLEAS	REV	GRADUATES	PROBATION MODIFICATIONS	DISMISSALS	OTHERS	TOTAL DISPOSITIONS	ENDING # PENDING CASES **	CURRENT ATLAS PARTICIPANTS	CURRENT PARTICIPANTS IN CUSTODY	FORMER ATLAS PARTICIPANTS	BOND
September	29	3	32	0	0	0	0	0	0	0	1	1	31	30	1	0	29

HARRY INGRAM		FY2015 MISDEMEANOR MENTAL HEALTH COURT STATS											CCCAP1/WADEF				
MONTH	BEGINNING # OF PENDING CASES	Rediverts	+NEW CASES RECEIVED THIS MONTH	=TOTAL CASES	TBJ	TBC	PLEAS	DISMISSAL	OTHER	TOTAL DISPOSITIONS	ENDING # PENDING CASES **	CURRENT PARTICIPANTS	NUMBER OF GRADUATES	BOND**			
September	93	0	18	111	0	0	0	3	4	7	104	38	3	38			

September 2015		FY2015 MHPD STATS										
MONTH	BEGINNING # OF PENDING CASES	+NEW CASES RECEIVED THIS MONTH	=TOTAL CASES	TRIALS	PLEAS	CON. DISM.	REVO-CATION	DISMISSALS	INCOMPETENT	REFERRALS	OTHER COUNSEL APPT	TOTAL CLOSED
R. LENOX	171	46	217	0	15	16	5	12	2	0	10	60
L. TAYLOR	253	22	275	0	4	2	1	0	3	0	5	15

MARIUM UDDIN		FY2015 FELONY COMPETENCY STATISTICS														
MONTH	BEGINNING # OF CASES	NEW CASES THIS MONTH	TBJ	TBC	Alt. Trial Dispos.	PLEAS	REVO-CATIONS	DISMISSALS	PROBATION	COM P. HRG.	EXTENSION S	CIVIL COM MIT.	MHMR REFERRAL	CONSULTS	OTHER	ENDING # OF PEOPLE IN
September	119	16	0	0	0	7	0	2	3	20	10	0	0	0	2	11

MARIUM UDDIN		FY2015 MISDEMEANOR COMPETENCY STATISTICS														
MONTH	BEGINNING # OF CASES	NEW CASES THIS MONTH	TBJ	TBC	Alt. Trial Dispos.	PLEAS	REVO-CATIONS	DISMISSALS	PROBATION	COM P. HRG.	EXTENSION S	CIVIL COM MIT.	MHMR REFERRAL	CONSULTS	OTHER	ENDING # OF PEOPLE IN
September	67	25	0	0	0	2	0	30	0	30	10	0	0	0	0	13

September 2015		MI Court										
MONTH	TOTAL NEW CASES RECEIVED	NEW CLIENTS AT GREEN OAKS	NEW CLIENTS AT MEDICAL CENTER MCKINNEY	NEW CLIENTS AT PARKLAND	NEW CLIENTS AT TIMBERLAWN	NEW CLIENTS AT HICKORY TRAILS	NEW CLIENTS AT ZALE LIPSHY	NEW CLIENTS AT TERRELL STATE HOSPITAL	PROBABLE CAUSE HEARINGS HELD	NO CONTEST COMMIT	CONTESTED COMMIT	FORCED MEDS HEARING IN COURT
L. ROBERTS	161	71	0	23	0	24	6	0	4	0	6	6
L. TAYLOR	32	0	32	0	0	0	0	0	2	0	1	0

RANDA BLACK		MI COURT						
MONTH	NEW CLIENTS	PROBABLE CAUSE HEARINGS HELD	NO CONTEST COMMIT TO TSH	CONTESTED COMMIT TO TSH	RECOMMITMENTS	MEDICATION HEARINGS	OUTPATIENT	JURY TRIAL
September	91	0	2	9	3	16	0	0

NAME OF MHMR PROGRAM: Metrocare Services
PROGRAM: SNOP

MONTH OF REPORT: 09_2015

DATE SUBMITTED: 10_2015

	ATLAS	Post-DDRTC	STAC	Misd.	PRIDE	DDRTC	PROBATION ICM	PAROLE ICM
1. Number of Offenders served at the beginning of the month:	17	30	24	22	3	58	50	86
2. Number of Referrals received:	2	15	2	10	0	18	9	8
3. Number of Assessments:	2	15	2	10	0	18	9	8
4. Number of Admissions:	2	15	2	10	0	18	9	8
5. Average length of stay by months:	2.73	2.43	2.35	1.63	2.65	1.6	4.44	5.04
5. a. Average hours served:	4.62	3.9	4.48	3.15	4.27	7.58	3.86	3.85
6. Services Utilized:	0	0	0	0	0	9	1	1
6. a. Visits to ER (medical)	0	0	0	0	0	3	0	0
6. b. 23-hour Observation (psych)	0	0	0	0	0	4	0	1
6. c. Inpatient Stay (med/psych)	0	0	0	0	0	2	1	0
6. d. Jail days less than 30 days:								
7. Number of Discharges:	2	8	3	6	0	24	4	5
7. a. Terminations (jail more than 30days)	2	6	3	4	0	0	2	1
7. b. Warrants/Suspension: (medical d.c.; abscond)	2	0	0	0	0	11	0	0
7. c. Graduates	0	2	0	2	0	13	2	2
8. Number of Offenders served at the end of month:	19	37	23	26	3	52	55	89
9. Total served in the month:	19	37	23	26	3	76	55	89
10. Number of Offenders on the waiting list:	0	0	0	0	0	0	0	0
11. Minimum/Maximum Census per FTE allocation	20-25	30-38	30-38	30-38	10-12	60	100-125	100-125
12. % of FTE Assigned	1	1.5	1.5	1.5	0.5		5	5
13. Vacancy(s)	0	0	0	0	0	0	0	1

Each FTE covers 20-25

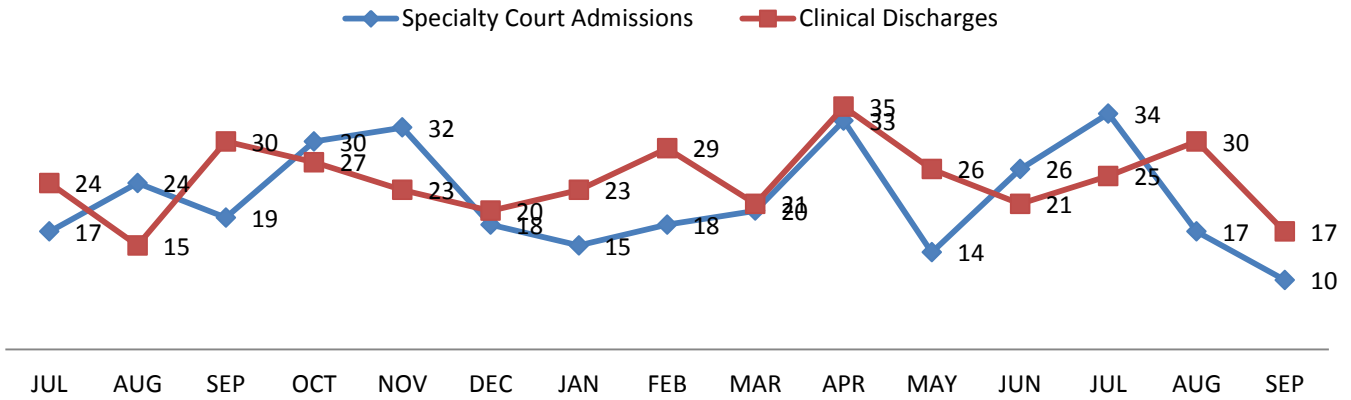
The Bridge

The Bridge	2014	2014	2014	2014	2015	2015	2015	2015	2015	2015	2015	2015	2015	2015	AVG.
	Sep.	Oct.	Nov.	Dec.	Jan.	Feb.	Mar.	Apr.	May	June	July	August	Sep.		
Bridge Emergency Shelter	322	333	373	345	354	288	287	291	289	282	292	311	314	313.9231	
Bridge Transitional Shelter	116	122	113	109	119	111	114	107	112	112	105	111	114	112.6923	
Direct Referrals to Other Shelters	576	530	605	597	657	574	595	610	645	710	706	713	709	632.8462	
Care Management	932	855	798	834	870	829	880	902	867	915	954	905	1221	904.7692	
Job Ready (Workforce)	100	95	81	91	108	96	112	86	100	111	113	99	118	100.7692	
Job Placements (Workforce)	29	27	19	18	23	23	29	34	28	34	29	23	34	26.92308	
Housing Placements	19	23	27	21	37	27	32	31	26	32	20	30	26	27	
Lifenet Mental Health Serv.	408	408	332	369	389	329	375	359	368	420	418	400	393	382.1538	
Lifenet Chemical Dep. Serv.	138	158	104	150	150	194	110	80	51	43	46	99	78	107.7692	
Parkland Clinic*	802	837	641	819	789	740	878	932	777	820	748	821	705	793	
VA Services	45	29	36	28	39	43	30	36	28	38	23	26	18	32.23077	
Judicial Re-Entry	9	10	11	8	3	6	9	5	7	12	6	5	3	7.230769	
Jail Release (General)	1	1	1	0	1	9	17	27	24	23	24	34	22	14.15385	
Triage Assessments*	495	457	497	496	544	451	505	509	515	602	544	581	556	519.3846	

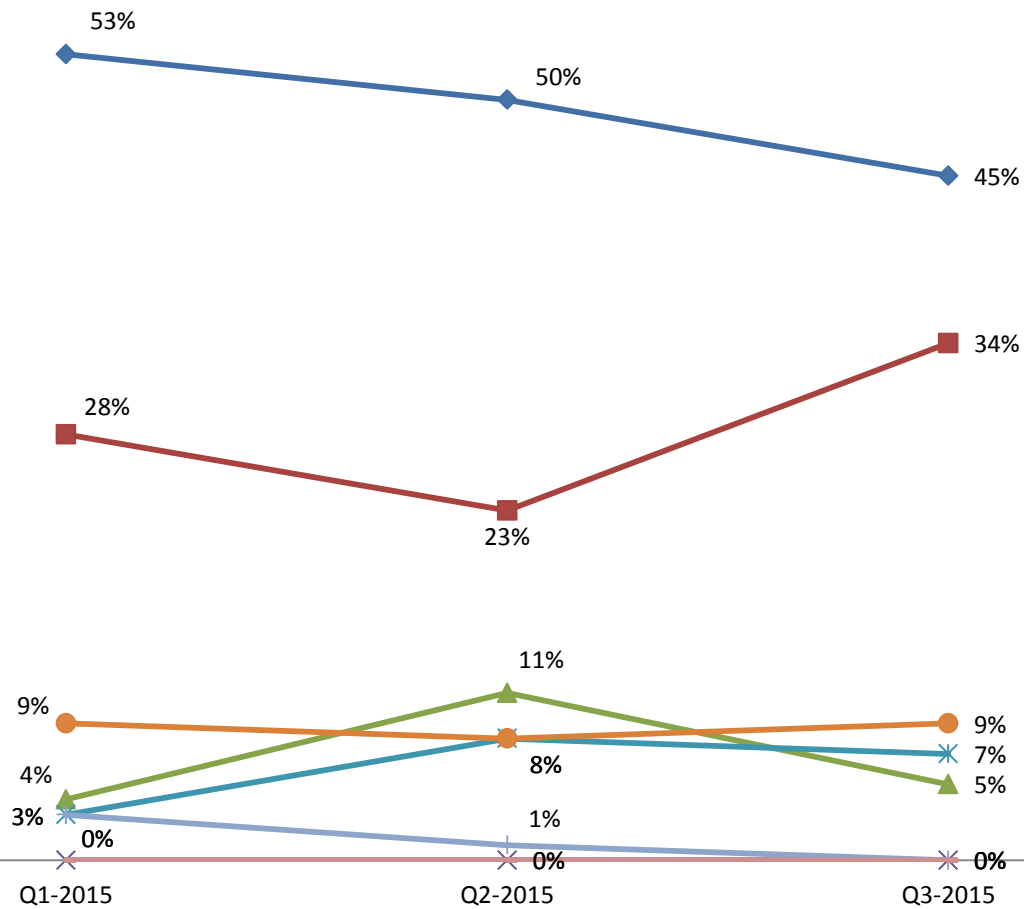
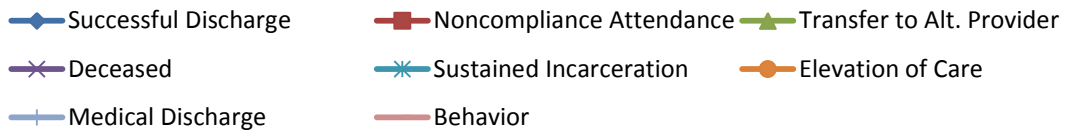
Each category represents *unduplicated guests* , not totals served.

*exception - Parkland Clinic and Triage Assessment numbers are for totals served.

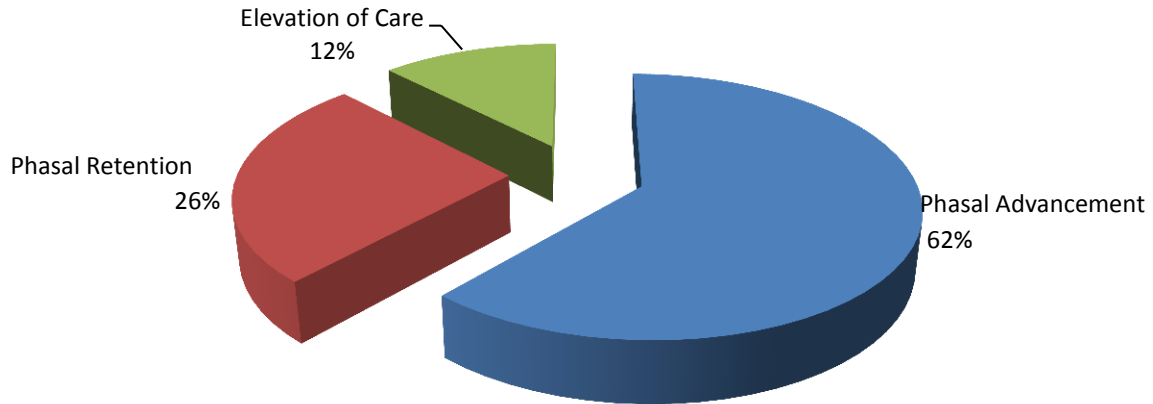
Specialty Court Admission / Discharge Trend



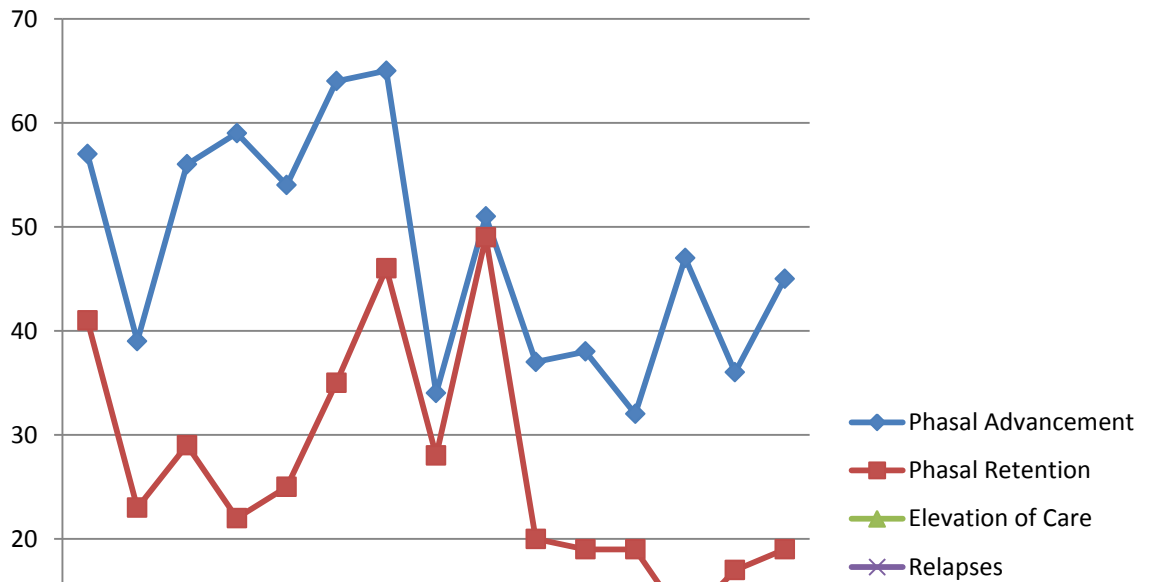
Quarterly Outcome Distribution Trend



SEP-15 Specialty Court Treatment Program Progression Rate

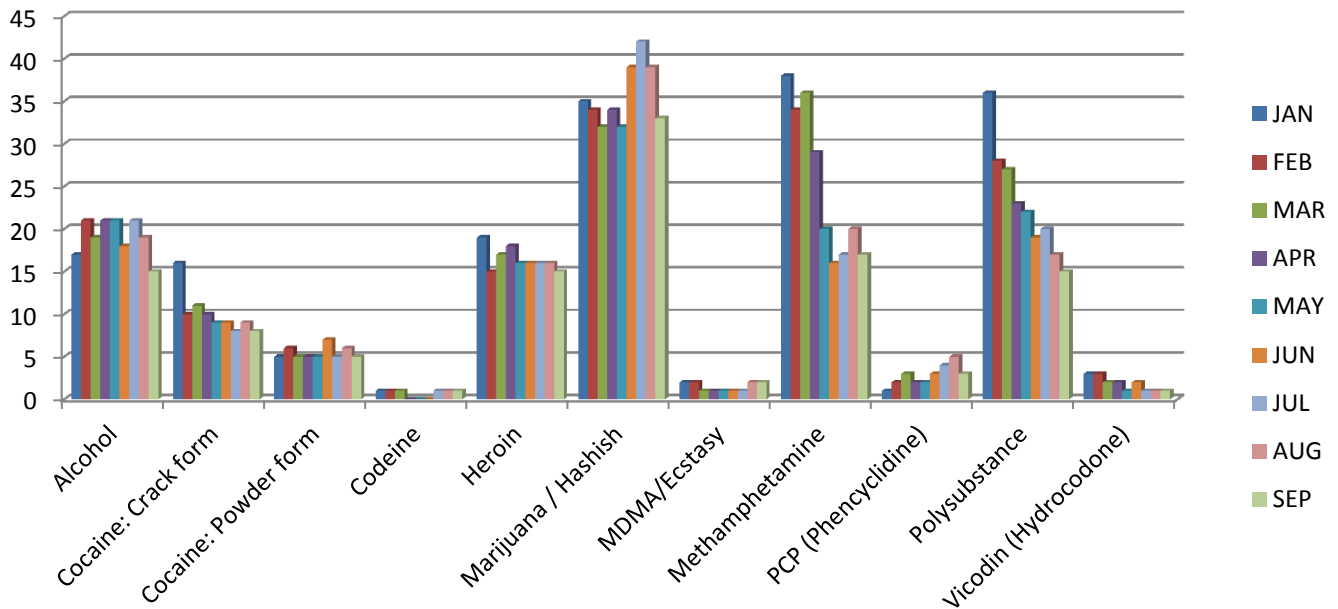


Specialty Court Treatment Program Progression Trend

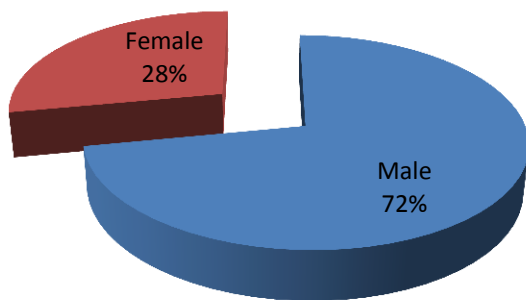


	JUL	AUG	SEP	OCT	NOV	DEC	JAN	FEB	MAR	APR	MAY	JUN	JUL	AUG	SEP
Phasal Advancement	57	39	56	59	54	64	65	34	51	37	38	32	47	36	45
Phasal Retention	41	23	29	22	25	35	46	28	49	20	19	19	12	17	19
Elevation of Care	6	7	8	10	1	5	12	8	12	8	3	3	12	12	9
Relapses	9	6	10	7	3	5	8	9	6	9	4				

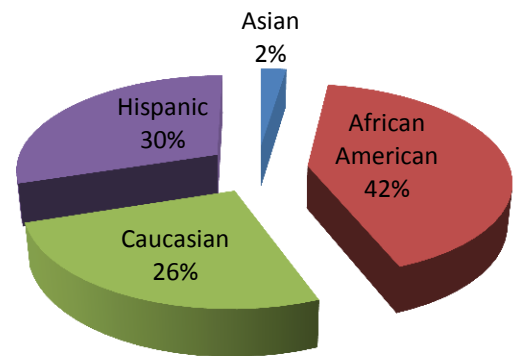
Specialty Court Participants by Reported/Observed Drug of Choice



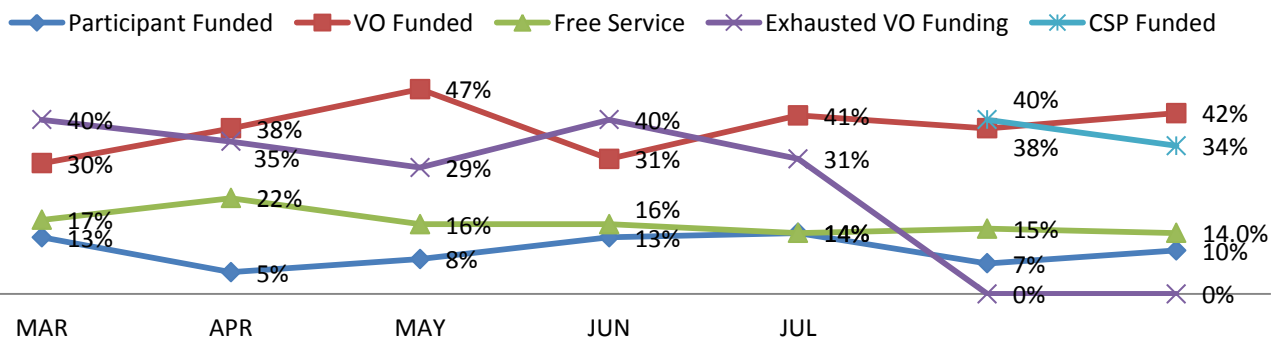
SEP-15 Specialty Court Participants by Gender



SEP-15 Specialty Court Participants by Ethnicity



Specialty Court Participant Funding Trend



Outpatient Competency Restoration Monthly Totals

	Jan	Feb	Mar	April	May	June	July	Aug	Sept	Oct	Nov	Dec	Total
Beginning of Month	28	22	23	22	29	27	29	29	29	39	0	0	
<u>Misdemeanor</u>	13	12	12	11	16	15	19	16	14				
Placed in OCR	3	5	5	8	2	8	4	5	8				48
Pending	2	1	0	1	7	0	2	2	4				
Homeless @ admit	3	3	3	5	0	4	3	3	4				28
Dispo	4	5	6	3	3	4	7	7	4	0	0	0	43
Outpatient to Inpatient	0	0	1	0	1	0	0	3	0				5
Abscond	0	1	3	0	1	1	0	2	2				10
Restored and Dismissed	4	1	2	2	1	3	6	2	2				23
Dismissed	0	3	0	1	0	0	1	0	0				5
<u>Felony</u>	15	10	11	11	13	12	10	13	15				
Placed in OCR	2	2	2	3	2	1	3	4	7				26
Pending	0	0	0	1	2	4	4	5	2				
Homeless @ admit	1	1	0	2	0	0	1	0	4				9
Dispo	7	1	2	1	3	3	0	2	1	0	0	0	20
Outpatient to Inpatient	0	0	0	0	2	0	0	1	0				3
Abscond	0	1	0	0	0	0	0	0	0				1
Restored and Dismissed	7	0	2	1	1	2	0	1	1				15
Dismissed	0	0	0	0	0	1	0	0	0				1
End of Month	22	23	22	29	27	29	29	29	39	0	0	0	249

DIVERT Numbers

<i>FY15</i>	<i>Start of Month</i>	<i>New admissions</i>	<i>DAOpt-out</i>	<i>Unsuccessful discharge</i>	<i>Graduates</i>	<i>End of Month</i>
TOTAL		124	4	34	63	
<i>Ave. per month:</i>		10	0.5	3	6	

FY16	Start of Month	New admissions	DAOpt-out	Unsuccessful discharge	Graduates	End of Month
Sept. 15	163	7	0	2	19	149
Oct. 15						
Nov. 15						
Dec. 15						
Jan. 16						
Feb. 16						
Mar. 16						
Apr. 16						
May. 16						
Jun. 16						
Jul. 16						
Aug. 16						

TOTAL	163	7	0	2	19	
--------------	-----	---	---	---	----	--

MMH Court

FY15	Start of Month	New admissions	DA Opt-out	Unsuccessful discharge	Graduates	End of Month
Total		81		43	64	
Ave. Per Month		6.75		3.58333333	5.33333333	

FY16	Start of Month	New admissions	DA Opt-out	Unsuccessful discharge	Graduates	End of Month
Sept. 15	52	9	0	3	3	55
Oct. 15						
Nov. 15						
Dec. 15						
Jan. 16						
Feb. 16						
Mar. 16						
Apr. 16						
May-16						
Jun. 16						
Jul. 16						
Aug. 16						

ATLAS Court

FY15*	Start of Month	New admissions	DA Opt-out	Unsuccessful discharge	Graduates	End of Month
Total		29		22	9	
Ave. Per Month		2.41666667		1.83333333	0.75	

FY16	Start of Month	New admissions	DA Opt-out	Unsuccessful discharge	Graduates	End of Month
Sept. 15	22	5	0	2	0	25
Oct. 15						
Nov. 15						
Dec. 15						
Jan. 16						
Feb. 16						
Mar. 16						
Apr. 16						
May-16						
Jun. 16						
Jul. 16						
Aug. 16						

* Denotes that numbers are slightly lower due to missing data.

DDAC Court

FY15*	Start of Month	New admissions	DA Opt-out	Unsuccessful discharge	Graduates	End of Month
Total		44		16	20	
Ave. Per Month		3.66666667		1.33333333	1.66666667	

FY16	Start of Month	New admissions	DA Opt-out	Unsuccessful discharge	Graduates	End of Month
Sept. 15	31	11	0	3	0	39
Oct. 15						
Nov. 15						
Dec. 15						
Jan. 16						
Feb. 16						
Mar. 16						
Apr. 16						
May-16						
Jun. 16						
Jul. 16						
Aug. 16						

* Denotes that numbers are slightly lower due to missing data.

STAC Court

* FY15	Start of Month	New admissions	DA Opt-out	Unsuccessful discharge	Graduates	End of Month
Total		19		16	51	
Ave. Per Month		1.58333333		1.33333333	4.25	

FY16	Start of Month	New admissions	DA Opt-out	Unsuccessful discharge	Graduates	End of Month
Sept. 15	16	1	0	1	0	16
Oct. 15						
Nov. 15						
Dec. 15						
Jan. 16						
Feb. 16						
Mar. 16						
Apr. 16						
May-16						
Jun. 16						
Jul. 16						
Aug. 16						

* Denotes slightly lower numbers due to incomplete data.

STAR Court

* FY15	Start of Month	New admissions	DA Opt-out	Unsuccessful discharge	Graduates	End of Month
Total		12		8	9	
Ave. Per Month		1		0.66666667	0.75	

FY16	Start of Month	New admissions	DA Opt-out	Unsuccessful discharge	Graduates	End of Month
Sept. 15	18	2	0	3	3	14
Oct. 15						
Nov. 15						
Dec. 15						
Jan. 16						
Feb. 16						
Mar. 16						
Apr. 16						
May-16						
Jun. 16						
Jul. 16						
Aug. 16						

* Denotes slightly lower numbers due to incomplete data.