



DALLAS COUNTY
Criminal Justice Department

Behavioral Health Steering Committee

Thursday, November 19, 2015

Agenda

1. Welcome and Call to Order
2. Review/Approval of Minutes 1 – 3
3. SET Court & DA Mental Health Reorg. *Carmen White*
4. Caruth Update *Brittany Lash* 4-5
5. SAMHSA Grant *Christina Gonzales*
6. 530 Sub Committee *Christina Gonzales* 6 - 8
7. BHLT & CSP Update *Charlene Randolph* 9 - 12
8. Jail Reports
 - Hospital Movement *Christina Gonzales* 13
 - Pregnant Patients *Shenna Oriabure* 14
 - Veterans Reports *Shenna Oriabure* 15
 - Homeless Report *Christina Gonzales* 16-17
 - Northstar Matches *Christina Gonzales* 18
9. Public Defenders Report *Lynn Richardson* 19
10. Provider Reports
 - Metrocare *Crystal Garland* 20
 - The Bridge *Jay Meaders* 21
 - IPS Reports *Enrique Morris* 22-24
11. Problem Solving Courts
 - Outpatient Competency *Christina Gonzales* 25
 - DIVERT *Keta Dickerson* 26
12. Specialty Courts CSCD *Serena McNair* 27-31
13. Announcements
14. Adjourn



**Behavioral Health Steering Committee
Thursday October 15, 2015**

Meeting called to order at 8:35am

The meeting was called to order by Chief Public Defender Lynn Richardson, in the absence of Judge Kristin Wade. Mrs. Richardson asked for any adjustments or corrections to the minutes and made a motion to approve the minutes as recorded. Angie Byrd seconded the motion and the committee approved the minutes as recorded.

Caruth Update

Brittany Lash provided a status update on the progress of the Caruth grant. The guiding framework of the grant is the Sequential Intercept Model, it has been utilized in other counties and is the leading model to create change. Earlier this month training on the Sequential Intercept Model was provided, demonstrating how the model works to help improve areas of the criminal justice system. There was a good turnout for the training; they hope to provide additional training in the up-coming months. At the present time, they have been working with law enforcements agencies across the county, which is a large part of intercept 1. Working with the LEA's the team is looking at training provided to officers, any challenges, what success that they have had and the community resources available to them. They are also gathering information on what diversion looks like to the officers and the decision-making process for diversion. The team will start interviews with court personnel and partner agencies in an effort to learn more of the processes within the court system.

SAMHSA Grant

Christina Gonzales reported 6 months ago the Criminal Justice Department applied for a grant through SAMHSA to provide residential treatment to female participants in a Specialty Courts. The award is for a total of \$954,276, or \$318,092 a year for the next 3 years. The grant will provide residential treatment, incentives, an evaluator, a recovery coach at Nexus and a coordinator at Dallas County. The evaluator will provide follow up with all participants 6 months after completion of treatment and provide reporting on grant outcomes. In the upcoming weeks an invitation for a kick-off meeting will go out to all stakeholders to review timeline and goals of the grant. As time progress there will be additional meetings with the project team, updates will be provided to the committee on a monthly basis.

530 Sub-Committee

Keta Dickerson provided an update of the 530 Fund. Currently, the balance for the felony account (4020) is \$55,739.23; the misdemeanor account for (4031) has a balance of \$67,845.55; for a combined total of \$133,968 (*pg. 8 of the September packet.*) The subcommittee has approved the following request for the MHJD court.

- **MHJD – Year End Program**

Keta Dickerson presented a request to utilize \$500 to pay for the year end program for the MHJD specialty court. The request is for a total amount of \$500; there are funds available in the 530 fund. The 530 sub-committee approved the request, and it is now being presented to the BHSC committee for final approval.

There were some discussion as to utilizing funds previously earmarked for treatment for CSCD and possibly delaying approving the request until such matter can be determined. Kita Dickerson informed the committee if the bills are not paid prior to September 30, a letter of noncompliance will need to be done to the auditor's office. Mike Laughlin made a motion to approve the request for \$500 for the Year

End program for the MHJD specialty court. Harry Ingram seconded the motion, a vote was taken in the committee approved the request. *(Pg.6-8, October Packet)*

CSCD Study

Dr. Johansson-Love provided an update on the CSCD studies with UTD. She reports the first 2 studies for Judge Wade (MHJD) and Judge Francis (4c) are completed and we should receive a first draft within the next 7 – 10 days. She reported some formatting issues with the DIVERT court data has caused some delay, however, that should be resolved shortly. Dr. Johansson Love reported the MOU was for 3-4 courts, the 530 sub-committee will need to vote on a court. She also stated there may be little room for recoupment of any funds since the MOU stated 3 or 4 courts. There is a possibility the fourth court will be the Veterans Court with Judge Collins. Christina will work with Sheena to reach out to Judge Collins to determine her interest in having a study completed.

BHLT & CSP Update

Charlene Randolph reported that currently CSP is focused on completing the year-end report which provides information on all metric achievements for CSP. The report is due on 10/31/2015, there is \$5 million in funding dependent on the report. CSP has achieved 100% of all of its process metrics and it's category 3 outcomes, which is how recidivism is calculated. The baseline goal was to get recidivism down to 28.9 %, they were able to get to a 27.2% rate for recidivism. The 7-30 day connection rate for those discharging from the hospital to the community was at 81.5% and 85.2% respectively. All reports are in the packet for review, if there are any questions please get in touch with Charlene Randolph. Ron Stretcher added the outcomes are showing these programs work and partnerships are crucial to Dallas County. In regards to Northstar, the current focus is finishing the RFP to select an organization to manage services. The RFP will be presented at the BHLT.

Jail Reports

Pregnant Women in Jail- Christina Gonzales reported the following numbers for pregnant women in jail; currently there are 27 pregnant women in jail, 16 with new offenses, 6 on probation violation, 7 sentenced, 13 have upcoming court dates and 7 without a court date. *(pg. 16 of October packet)*

Hospital Movement- Brandy Cody reported that for the month of September 34 were admitted, 41 inmates were deemed incompetent to stand trial, 26 were sent to the hospital and 22 were brought back from the hospital. Currently there are 52 inmates waiting to go to the hospital. *(pg. 17 of October packet)*

NorthSTAR Intakes - Christina Gonzales reported a total of 5,697 book-ins during the month of September. There is a 24% rate on the Northstar match with a total of 1,358 total Northstar matches for the month of September. Mrs. Richardson asked if there was a way to track those that have an onset of mental illness while in jail. There is some merit to looking at how we can start to identify these individuals, Christina Gonzales will follow up with Preston for ideas to track these individuals.

Homeless Report – Christina Gonzales reported an addition to the homeless report has been identifying inmates who have a mental illness. This number was not previously looked at in the report so data is specific to the month of September 2015. Reviewing the information those with a mental illness tend to make up the majority of the homeless population. They have the higher rates of arrests, spend more time in jail and are more likely to have state jail felonies. Those with mental illnesses are identified through CCQ, Northstar and completion of the medical screening. Ron Stretcher added there has been a calculated coordinated effort to place people in programming and releasing them from jail faster.

Ron also gave an update on the Cottages, the new finish date is in December. This delay is due to the weather that hit North Texas the early part of this year. The Cottages are a Housing First, Permanent Supportive Housing model which is new for Dallas County and very innovative. This means the clients can still use drugs/ alcohol and move into the apartments, they do not need to have any clean time. They will be able to stay at the cottages for as long as needed, unless there is a problem with safety.

Thirty five (35) individuals have been identified as people that are going into the cottages from the jail and are already being worked with. Lynn asked if there was anything that could be done in the PDs office to help get the people ready for the program. Mike Laughlin reported if anyone has a referral for someone that may benefit from the Cottages to please contact him.

Public Defender Report

Lynn Richardson reported the information was provided in the October packet on page 20. Please contact Mrs. Richardson if you have any questions in regard to the report submitted.

Provider Reports

Metrocare - Crystal Garland directed the committee to review the information on page 21 of the October packet. Overall, many of the courts had an increase in census by 2-5 clients, the exception being DDRTC which had a decrease in census. The Probation ICM program ended the month with 55 clients, which is low. Metrocare has started a pilot program that pairs a TACOOMI caseworker with a probation officer to share a caseload, it started on Monday and they are hoping that there will be an increase in referrals. Judge Mays included the Metrocare caseworkers have been very helpful.

The Bridge - Information was provided as a handout on page 23 of the October packet.

IPS Report - Enrique Morris reports there has been an 81% reduction in admissions from specialty courts. He reports that this is not alarming and seems to be the overall pattern with admissions. They did notice, however, an increase in the amount of people discharged from the program for non-compliance. There has been an increase in the successful discharges by 17%, bringing the amount of successful discharges up to 56%. Overall, for those in the program during the month of September: 63 cases were approved for phase advancement, 26% were retained and 12% were elevated. Being able to utilize the CSP Aftercare Program, they have reduced the amount of services being provided for free to individuals that have exhausted their VO funding.

Problem Solving Courts

Outpatient Competency Restoration- Brandy Coty reported for the month of September 8 cases were added to misdemeanor OCR and 2 were successfully graduated. On the felony side 7 cases were added and 1 successfully graduated. Ending with a total of 39 participants in misdemeanor and felony OCR combined. (pg. 26, October packet)

DIVERT- Keta Dickerson reported with a new report which consolidates information from the previous year. In FY 2015 there were a total of 124 new admissions, 4 DA Opt -outs, 34 unsuccessful discharges and 63 graduates. For the month of September, DIVERT has 7 new admissions, 2 unsuccessful discharges and 19 graduates.

Specialty Courts CSCD

Serena McNair reported the following numbers for the Probation Department; ATLAS ended with 25, DDC ended with 39, MH ended with 55, STAC ended with 16 and STAR ended with 14 for a total of 149. Judge Mays was concerned with the number being reported to the BHSC for STAC, the numbers are very low and do not reflect the numbers of the court. Christina Gonzales explained the numbers are provided to BHSC from CSCD, the numbers from STAC have consistently been under 20 for the past year. (pgs. 28-32 October)

Announcements

No announcements made.

Adjourn

The meeting was adjourned at 9:55am by Chief Public Defender Lynn Richardson.

Meadows Mental Health Policy Institute

Caruth Smart Justice Planning Grant Project Status Update- November 2015

The Caruth Smart Justice Planning Grant continues to progress with Phase I community assessment functions, and the Grant Planning Team remains on track to provide the W.W. Caruth, Jr. Foundation at the Communities Foundation of Texas with the completed community assessment in January 2016. While the planning process will formally begin in February 2016, Meadows Mental Health Policy Institute (MMHPI), in partnership with the Justice Center and Dallas County Criminal Justice Division, will begin to design and implement an Executive Steering Committee and work groups to begin creating community plans focused on addressing identified needs as found in the community assessment. These work groups will hold their first meetings towards the end of December 2015, but shall begin in earnest in February 2016. Groups will be structured within three large functional areas of the justice system: Pre-Magistration, Magistration, Post-Magistration, with Information Sharing being addressed in its own work group parallel in relation to the others. Each of these areas will have sub-groups to address more specific concerns if needed.

During the planning process, community stakeholders and partners have requested that MMHPI host a series of “101” trainings to address key areas affecting community planning and implementation including: recidivism, best practices, NorthStar, and CCP 16.22/ CCP 17.032. Additionally, MMHPI plans to host an additional Sequential Intercept Model training on December 2nd for those who were unable to attend in October.

Sequential Intercept Model

Intercept 1 (Law Enforcement)- The Grant Planning Team has begun holding focus groups with various police organizations throughout Dallas County. In October we were able to convene groups with the Dallas Sheriff’s Office (DSO) patrol/traffic division, DSO warrants division, and supervisors within these divisions. In the first week of November, the Team will host seven focus groups for DART officers, including three for supervisors, and four with the South Central and South East Divisions of Dallas Police Department (DPD). Throughout the remainder of November 2015 and beginning December 2015, we shall continue to host focus groups with the remainder of DPD divisions and any other jurisdictions who are willing and able to participate.

Intercept 2 (Initial Detention/Initial Court Hearings)- On October 27, 2015, the “flow mapping” and “red flag” identifying process with Dr. Fabelo’s Justice Center team came to its conclusion in a very productive stakeholders meeting. During this meeting the final draft of the map and flags was vetted by community partners and stakeholders. The red flags will be used to inform the work groups (noted above) and some of the areas of concern. Also in the October 27th and 28th meetings, the Justice Center presented preliminary recidivism data. The report was the first of its kind to compare multiple large counties in Texas (Harris, El Paso, Dallas, Bexar) in a

meaningful way, using the same definitions and data measurements to get a true picture of recidivism rates and possible causes.

Intercept 3 (Jails/Courts)/ Intercept 4 (Re-Entry) / Intercept 5 (Community Corrections)-

During the month of October, the Grant Planning Team worked feverishly to schedule and coordinate key informant interviews with community partners and stakeholders. In the first week of November, five members of the Evaluation Team came to Dallas to assist in the interviews. Along with these interviews, we submitted formal data requests to each interviewee in regards to available capacity and utilized capacity for each service line. We will interview specialty court judges and coordinators, mental health and substance use community providers, community hospitals that provide mental health services, etc. These interviews will fill in the remaining information needed for the capacity assessment and gaps analysis of Dallas County.



Behavioral Health Steering Committee

530 Fund Sub-Committee

Minutes for November 11, 2015

Keta Dickerson called the meeting to order at 9:35am and asked for a motion to approve the minutes. Judge Wade made a motion to accept the minutes as recorded, Leah Gamble seconded the motion and the minutes were accepted as recorded by the group.

530 Fund Balance

An update of the 530 Fund Balance was provided, currently the balance for the Felony account (4020) is \$65,895.74; the Misdemeanor account (4031) is \$66,713.31, for a total of \$132,603.05. Shenna Oriabure noted the expenses that were charged to the account should have come out of last fiscal year. Shenna Oriabure also noted the auditor's office is aware and will make the appropriate changes; it should not affect the end balance.

CSCD Study with UTD

Dr. Johansson-Love handed out the executive summary for 4-C and Misdemeanor Mental Health Court. UTD will present the full write up at the next CJAB meeting. Data is still needed from DIVERT before UTD can complete study. Keta Dickerson is correcting internal data before the data is turned over for study. Judge Mays asked why STAC was not considered in the UTD study. Dr. Johansson-Love advised STAC already participated in a CSCD funded study. Judge Mays requested the completed report from the CSCD study. Dr. Johansson-Love will provide requested report to Judge Mays. Dr. Johansson-Love is uncertain if a 4th court for the study is feasible due to data retrieving limitations and time constrictions. Dr. Johansson-Love has reservation about including Veterans' Court due to the Court's limited usage of coding and data input into the CSCD system. Dr. Johansson-Love will contact Judge Collins to discuss Veterans Court's possible participation in study.

CSCD Statistical Reporting

Judge Wade suggested CSCD provide an annual report to each specialty court judge with statistics about that specific specialty court. Dr. Johansson-Love stated a general report with information regarding number served, ethnicity, and other basic information can be generated. Dr. Johansson-Love expressed concern about sharing the report with people other than the specific specialty court judge. Dr. Johansson-Love requested each specialty court judge submit

(by email) a wish list of variables to track. Dr. Johansson-Love then will present the wish list to CSCD management. There was discussion about specialty court data management and database. Judge Hoffman suggested finding grant funding for technology for specialty courts only. Keta Dickerson and Judge Wade suggested somehow working with or upgrading the current CSCD data management system to satisfy specialty court needs.

530 Sub-Committee Chair

Keta Dickerson resigned as chair of the 530 Sub-Committee effective immediately. Keta will still be a member. Ruth Kaiser made a motion to select Christina Gonzales as 530 Sub-Committee Chair. Judge Wade seconded the motion. The motion was approved by the subcommittee.

Adjourn

The meeting was adjourned at 10:25am and will reconvene on 12/9/15 @9:30am.

**530 Fund FY 15
Balances/Expenditures
Summary Page**

Month	Beg. Bal. Misd 4031	Expense	Credit	End Bal	Beg. Bal Fel 4020	Expense	Credit	End Bal
Oct	\$72,781.49	\$14,385.39	\$8,317.21	\$66,713.31	\$60,976.74	\$0.00	\$4,919.00	\$65,895.74
Nov								
Dec								
Jan								
Feb								
Mar								
Apr								
May								
June								
July								
Aug								
Sep								
	Current Totals	\$14,385.39	\$8,317.21		Current Totals	\$0.00	\$4,919.00	
	Ending Balance			\$66,713.31	Ending Balance			\$65,895.74
	Avg Mo. Credit		\$8,317.21		Avg Mo. Credit		\$4,919.00	

Ending Bal Misd/Fel \$132,609.05

Comments: During the reporting period the following items were paid: Account 4031 \$2,687.39 MH Coordinator Salary, \$600.00 Incentives for STAC, \$11,098.00 for MHJD Treatment.

ACS 1115 CSP Monthly Production Report

	Past Year Average	Oct-14	Nov-14	Dec-14	Jan-15	Feb-15	Mar-15	Apr-15	May-15	Jun-15	Jul-15	Aug-15	Sep-15	AVERAGE	TOTAL
Total Service Episodes:	449	741	479	308	393	573	740	707	620	660	861	726	769	631	7,577
Total Unique Consumers:	328	740	444	239	274	462	559	518	402	399	560	467	465	461	5,529
Percentage Change to DY3		225.50%	135.30%	72.83%	83.49%	140.78%	170.34%	157.85%	122.50%	121.58%	170.64%	142.31%	141.70%		
Total Encounters by Type:															
Triage		741	479	308	393	573	740	707	620	660	861	726	769	631	7,577
Care Coordination		1420	1297	1441	1425	2160	2432	2965	2668	2767	3520	3334	3260	2391	28,689
F2F Encounter		157	145	173	190	247	310	340	285	299	367	361	312	266	3,186
TOTAL Encounters:		2318	1921	1922	2008	2980	3482	4012	3573	3726	4748	4421	4341	3288	39,452

Recidivism 10/1/14 - 9/30/15

Triages 12	5110
Bookins 12	1392
Recidivism % 12 - 12	27.24%
Traiges 6	2508
Bookins 6	414
Recidivism % 6 - 6	16.51%
Traiges 6	2508
Bookins 12	1007
Recidivism % 6 - 12	40.15%

Frank Crowley Specific Report

	Oct-14	Nov-14	Dec-14	Jan-15	Feb-15	Mar-15	Apr-15	May-15	Jun-15	Jul-15	Aug-15	Sep-15	AVERAGE	TOTAL
Service Episodes:	680	435	267	352	535	677	650	572	614	795	712	769	588	7,058
Unique Consumers:														
By N* ID	651	382	182	218	409	489	440	337	339	453	415	419	395	4,734
By Client ID	28	18	20	17	15	18	24	22	19	43	40	46	26	310
TOTAL Unique Consumers:	679	400	202	235	424	507	464	359	358	496	455	465	420	5,044
TOTAL Unique Consumers as a %:	99.85%	91.95%	75.66%	66.76%	79.25%	74.89%	71.38%	62.76%	58.31%	62.39%	63.90%	60.47%		
Unique F2F:														
By N* ID	83	68	96	107	150	184	221	154	155	198	210	184	151	1,810
By Client ID	17	13	8	9	10	11	12	15	12	18	24	31	15	180
TOTAL Unique F2F:	100	81	104	116	160	195	233	169	167	216	234	215	166	1,990
TOTAL Unique F2F as a %:	93%	76%	76%	75%	76%	75%	80%	69%	64%	69%	67%	69%		
F2F Percentage:	15.88%	24.60%	50.94%	43.75%	39.44%	38.55%	44.92%	42.66%	42.18%	39.37%	49.02%	40.57%	38.91%	38.91%
Encounters by Type:														
Triage	680	435	267	352	535	677	650	572	614	795	712	769	588	7,058
Care Coordination	1057	1024	1157	1160	1929	2105	2630	2407	2539	3183	3222	3260	2139	25,673
F2F Encounter	108	107	136	154	211	261	292	244	259	313	349	312	229	2,746
TOTAL Encounters:	1845	1566	1560	1666	2675	3043	3572	3223	3412	4291	4283	4341	2956	35,477
Female:														
Black	128	77	47	40	75	120	98	68	69	82	75	79	80	958
White	61	38	23	22	39	38	42	39	40	49	46	42	40	479
Hispanic	33	8	3	8	20	22	17	17	11	26	29	19	18	213
Other					1	4					1	1	2	7
Unknown		3		1	1	1	2	1					1	1
TOTAL Female:	222	126	73	71	136	185	159	125	120	157	152	141	139	1,657
Male:														
Black	282	197	81	106	193	204	214	145	140	195	177	174	176	2,108
White	107	52	29	36	56	70	61	61	63	101	81	102	68	819
Hispanic	65	21	13	20	34	40	27	24	34	40	42	45	34	405
Other	2	3	1	1	4	6	3	2		2		3	3	27
Unknown	1	1	5	1	1	2		2	1	1	3		2	18
TOTAL Male:	457	274	129	164	288	322	305	234	238	339	303	324	281	3,377

Timberlawn Specific Report

	Oct-14	Nov-14	Dec-14	Jan-15	Feb-15	Mar-15	Apr-15	May-15	Jun-15	Jul-15	Aug-15	Sep-15	AVERAGE	TOTAL
Service Episodes:	61	44	41	41	38	63	57	48	46	66	14		47	519
Unique Consumers:														
By N* ID	55	37	33	30	32	47	49	37	22	50	8		36	400
By Client ID	6	7	4	9	6	5	5	6	19	14	4		8	85
TOTAL Unique Consumers:	61	44	37	39	38	52	54	43	41	64	12		44	485
TOTAL Unique Consumers as %:	100%	100%	90%	95%	100%	83%	95%	90%	89%	97%	86%		93%	93%
Unique F2F:														
By N* ID	45	33	32	28	30	41	47	34	19	43	8		33	360
By Client ID	3	5	2	6	5	4	1	4	17	8	4		5	59
TOTAL Unique F2F:	48	38	34	34	35	45	48	38	36	51	12		38	419
TOTAL Unique F2F as a %:	98%	100%	92%	94%	97%	92%	100%	93%	90%	94%	100%		95%	95%
F2F Percentage:	80.33%	86.36%	90.24%	87.80%	94.74%	77.78%	84.21%	85.42%	86.96%	81.82%	85.71%		84.78%	84.78%
Encounters by Type:														
Triage	61	44	41	41	38	63	57	48	46	66	14		47	519
Care Coordination	363	273	284	265	231	327	335	261	228	337	112		274	3016
F2F Encounter	49	38	37	36	36	49	48	41	40	54	12		40	440
TOTAL Encounters:	473	355	362	342	305	439	440	350	314	457	138		361	3975
Female:														
Black	14	6	9	7	7	12	13	9	9	10	2		9	98
White	3	7	3	6	3	5	4	5	8	14	4		6	62
Hispanic	8	7	2	7	7	3	7	8	5	3	1		5	58
Other	2	2	1	2	1	3	1	1	1	1			2	8
Unknown	2	2	1	2	1	1	1	1	1	5			2	2
TOTAL Female:	29	22	15	23	18	23	25	22	23	33	7		22	226
Male:														
Black	16	14	9	6	8	12	10	8	9	12	1		10	105
White	9	3	5	2	8	7	6	9	4	12	3		6	68
Hispanic	6	5	4	5	3	7	10	3	4	7	1		5	55
Other	1	2	2	3	1	3	1	1	1				2	8
Unknown	2	2	2	3	3	3	3	1	1				2	9
TOTAL Male:	32	22	22	16	20	29	29	21	18	31	5		22	245
Age of Triage Encounters:														
Adult	38	30	30	24	32	32	34	25	31	50	9		30	335
Minor	21	11	5	10	5	17	15	17	9	6	2		11	118
Uncollected	2	3	2	5	1	3	5	1	1	8	1		3	32
TOTAL Age of Triage Encounters:	61	44	37	39	38	52	54	43	41	64	12		44	485
Age of F2F Encounters:														
Adult	31	30	29	24	31	30	36	23	27	44	10		29	315
Minor	17	8	5	10	4	15	12	15	9	6	2		9	103
Uncollected	0	0	0	0	0	0	0	0	0	1	0		0	1
TOTAL Age of F2F Encounters:	48	38	34	34	35	45	48	38	36	51	12		38	419
F2F Outcomes:														
23 hours obs														
Crisis Residential		2	5	1	3	3	6	1	1	4	1		3	27
Hotline/MCOT				1									1	
Inpatient- Civil	9	6	5	5	2	8	7	10	5	11	2		6	70
Intensive Outpatient	4	3	2	1	6	4	5	3	5	6	1		4	40
Jail-based Psychiatric Care										1				
Left Against Clinical Advice			1					3	2				1	
Medical Referral	3	1	4	2	2								2	17
No Behavioral Health Services Indicated			1				1		1	1	2		1	
Other Higher Level of Care		1											1	1
Partial Hospitalization Program	1	1											1	2
Refused Recommended Treatment										1				
Residential-CD	2	2											2	4
Residential-SUD/ COPSD	1	1	1	2	2	2	2			3	1		2	14
Routine Outpatient	25	20	12	19	15	19	19	15	18	14	2		16	178
School-based services			1			1							1	2
Unable to complete assessment						1	2						2	3
Urgent Care Clinic	4	1	2	3	5	7	6	6	4	10	3		5	51
TOTAL Outcomes	48	38	34	34	35	45	48	38	36	51	12		38	409
Diversion Rate	81.25%	84.21%	85.29%	85.29%	94.29%	82.22%	85.42%	73.68%	86.11%	78.43%	83.33%			82.89%

**Transicare Reporting
Crisis Services Project**

		2014-10	2014-11	2014-12	2015-01	2015-02	2015-03	2015-04	2015-05	2015-06	2015-07	2015-08	2015-09
1	Beginning Census	36	34	42	48	58	47	62	65	62	69	60	62
2	REFERRALS	18	27	42	31	7	53	16	29	37	45	41	33
	ACS	9	16	25	19	7	37	7	17	22	29	28	23
	Comp	9	11	17	12	0	17	9	12	15	16	13	10
3	Admissions												
4	Referred Admitted	4	8	12	12	2	21	7	9	11	18	14	9
5	No Admit Client Refusal	1		1	1				3	2	0	0	1
6	No Admit Criteria	6	7	8	9	1	10	3	8	10	12	11	15
7	No Admit Structural	1	6	6	4		2	1	1	2	3	5	3
8	Pending	6	6	15	5	4	20	5	8	12	12	11	5
9	<i>PRIOR PENDING</i>												
10	Pending Admitted		5	4	7	3	4	9	6	9	2	8	3
11	No Admit Client Refusal		1	3			1	3		1	0	2	1
12	No Admit Criteria	3	3		2	2		2		1	3	3	6
13	No Admit Structural		1	1	4		2	2	1	0	2	2	0
14													
15	Total Admissions	4	13	16	19	5	25	16	15	20	20	22	12
16													
17	Discharges												
18	Success Transfer	1	3	2	4	8	5	3	4	5	6	3	1
19	DC Midterm Disengage	1		1		1	1	3	4	2	7	3	4
20	DC Rapid Disengage	3	1	1	1	1	1		1	0	0	3	1
21	DC Structural	1	1	6	4	6	3	7	9	6	16	11	1
22	Total Discharged	6	5	10	9	16	10	13	18	13	29	20	7
23	Active End Of Month	34	42	48	58	47	62	65	62	69	60	62	67
24													
25	Outcome Data												
26	<i>Terrell State Hospital Linkages</i>												
27	≤7 Connect To Prescriber	2	4	4	2	3	7	7	3	4	6	4	4
28	≤30 Connect To Prescriber	2							1	0	1	0	0
29	Missed Metric			4	1	1	0	0	0	0	2	0	0
30	Total Released	4	4	8	3	4	7	7	4	4	9	4	4
31													
32	Cummulative ≤7 Connect %	50.0%	75.0%	62.5%	63.2%	65.2%	73.3%	78.4%	78.0%	80.0%	77.8%	81.5%	80.6%
33	Cummulative ≤30 Connect %	100.0%	100.0%	75.0%	73.7%	73.9%	80.0%	83.8%	85.4%	86.7%	85.2%	85.2%	87.1%
34	Missed Metric	0.0%	0.0%	25.0%	26.3%	26.1%	20.0%	16.2%	14.6%	14.6%	14.8%	14.8%	12.9%
35	<i>Unduplicated Served</i>												
36	Monthly Unduplicated	56	53	72	81	65	90	84	90	91	101	90	91
37	DSRIP YTD Unduplicated Served	56	74	103	136	140	182	199	226	257	301	322	349
38													
39	<i>Encounter Data</i>												
40	F2F Encounter	297	226	451	497	376	409	561	490	516	478	323	407
41	Care Coord	174	138	177	209	178	177	246	255	260	247	151	163
42	Total	471	364	628	706	554	586	807	745	776	725	474	570
	<i>Consults</i>												
43	Referral							32	0	0	16	0	3
44	Pending							29	16	10	15	13	13
45	Resolved							3	13	6	9	2	5

Jail Competency Stats 2015

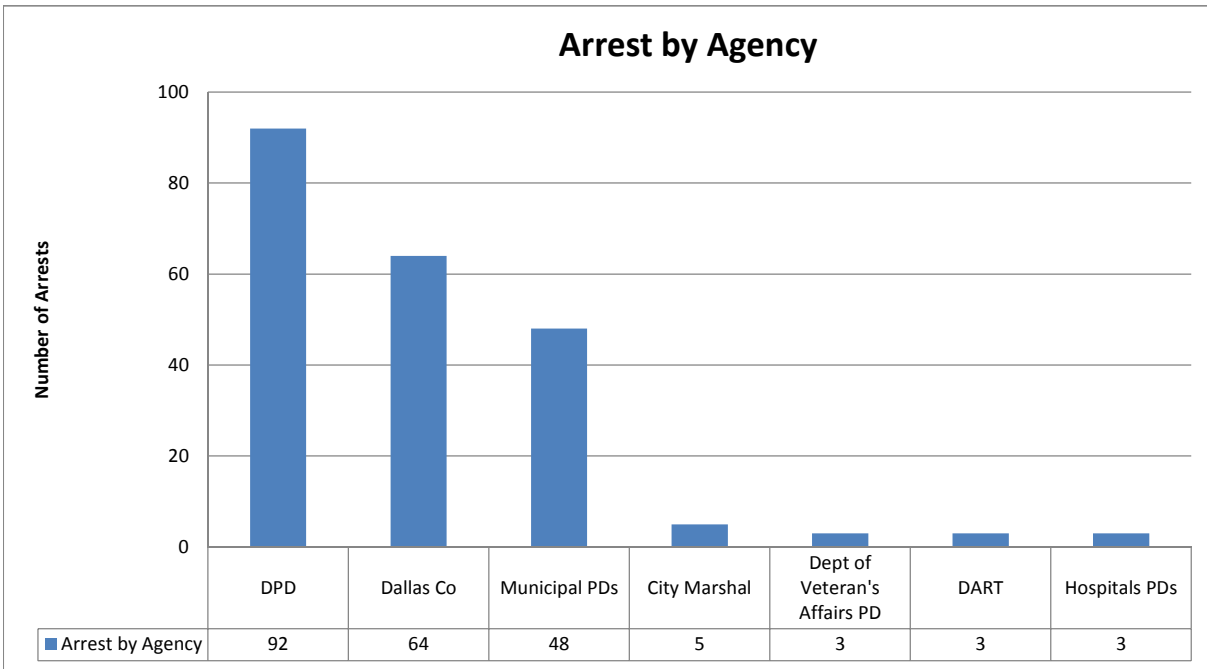
	Jan	Feb	March	April	May	June	July	Aug	Sept	Oct	Nov	Dec	Totals
Active													
New Evals - Incompetent	48	61	39	38	43	41	46	51	41	44			452
Waiting for the hospital - End of month	31	43	73	84	79	71	55	58	52	52	0	0	
Less than 30 days	24	26	55	33	29	35	25	33	29	25			
30 to 60 days	5	12	13	38	24	16	12	9	8	17			
Greater than 60 days	2	5	5	13	26	20	18	16	15	10			
Returned to jail from the hospital	13	8	13	15	22	16	23	26	22	22	0	0	180
Felony	8	7	10	11	16	12	18	22	19	14			
Average length of stay (days)	105	102	80	85	100	79	101	124	100	121			
Misdemeanor	5	1	3	4	6	4	5	4	3	8			
Average length of stay (days)	91	56	84	80	71	54	64	66	75	89			
Previous return legal case pending	27	43	30	36	23	36	26	23	20	18	0	0	282
Less than 30 days	5	12	8	9	0	0	0	0	0	0			
1 to 3 months	7	13	6	10	6	20	12	11	12	10			
3 to 6 months	10	11	8	5	7	4	5	4	2	4			
> 6 months	5	7	8	12	10	12	9	8	6	4			
Closed													
New Evals - Competent	28	38	37	36	33	33	39	27	40	35			346
Admitted to the state hospital	35	18	35	13	34	38	40	26	34	26	0	0	299
Felony	24	11	22	8	24	21	26	17	23	20			
Average wait for a hospital bed (days)	61	59	56	54	54	79	76	50	69	67			
Misdemeanor	11	7	13	5	10	17	14	9	11	6			
Average wait for a hospital bed (days)	39	39	49	42	42	60	45	39	37	46			
Hospital Return Legal Case Resolved	22	11	23	29	20	22	16	27	21	21	0	0	212
Less than 30 days	16	2	6	7	8	8	7	18	8	12			
1 to 3 months	5	1	9	14	9	11	5	3	9	4			
3 to 6 months	1	7	3	2	3	1	3	4	2	4			
> 6 months	0	1	5	6	0	2	1	2	2	1			
Case dismissed at the hospital	1	5	6	12	0	6	4	4	5	4	0	0	47
Felony	0	0	1	1	0	1	0	0	0	0			
Misdemeanor	1	5	5	11	0	5	4	4	5	4			

Pregnant Patients

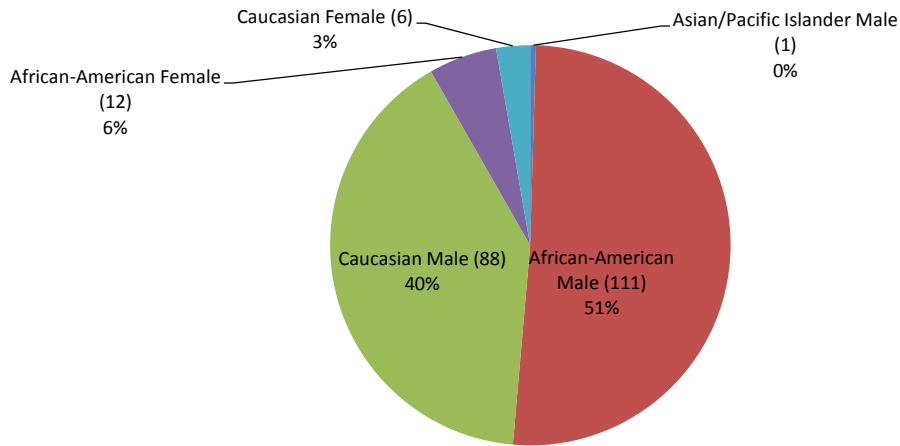
	1st Half 2014	1st Half 2015	October 2014	October 2015
In Jail (atleast one day in month-not total at end of the month)	288	301	51	65
Probation Violations	76	63	21	16
New offenses/BF/IB only	178	208	26	37
Parole Violations only	5	10		9
Other reason in jail	29	20	4	3
Released Since Last Month	106	140	17	22
Released to SAFPF	1	3	-	2
Released to Nexus Recovery	10	18	2	1
Released to state hospital	0	6	-	1
Released to other treatment	4	2	-	1
Released to TDCJ (ID or SJ)	12	10	2	4
Released on Probation	13	22	3	5
Released on bond	27	36	4	4
Released to Other Agencies	15	11	1	-
Released for other Reasons	24	32	6	5
New Cases Since Last in Month	96	110	24	21
Emails To Court Coordinators for settings	12	18	1	4
Email Notifications to Probation	24	20	4	2
Email Notifications to TDCJ desk (Sgt. Temple)	16	10	4	4
Pregnant Patient Interviews for Referral Purposes		0	-	-
Nexus Notifications		0	-	-
			-	-

Veterans Report October 2015

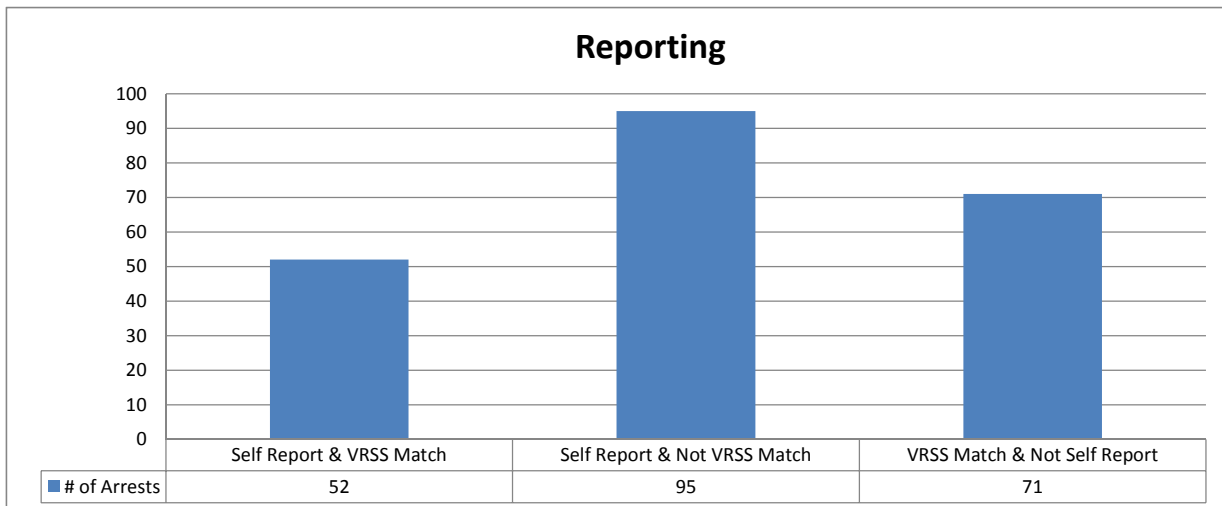
Arrest by Agency



Arrest by Race & Gender



Reporting

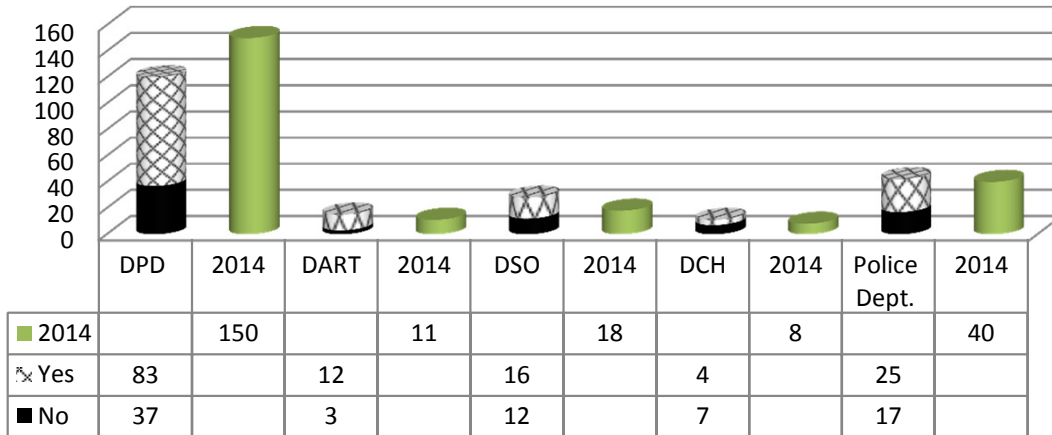


Homeless Jail Population

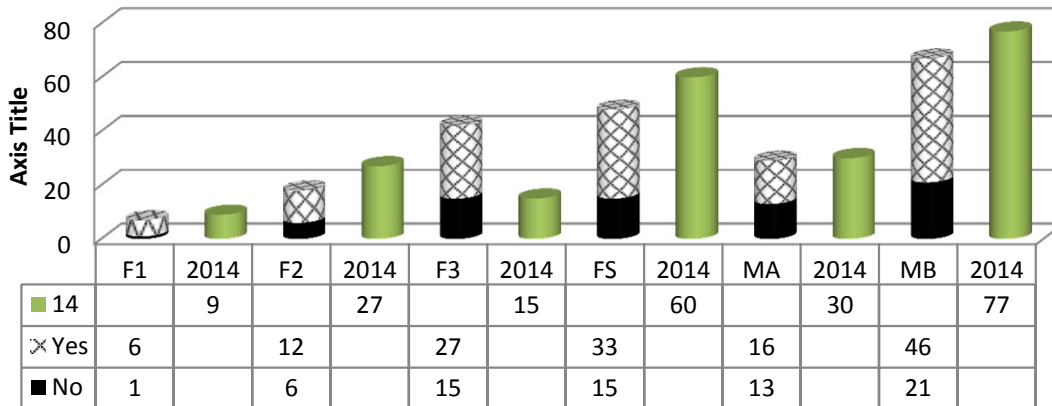
October 2015

	2014	2015
Unique Individuals	220	205
Total Number of Arrestes	227	213
Days In Jail	16,406	8,786
Average Number of Days in Jail	71	46

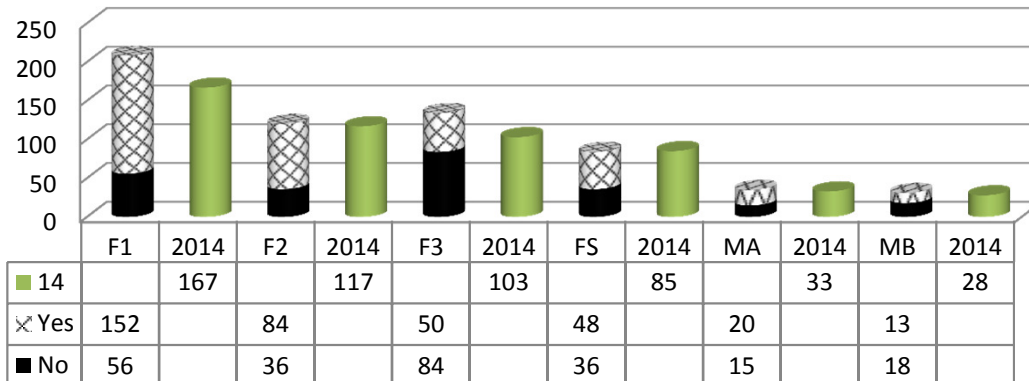
Arresting Agency



Degree of Offense

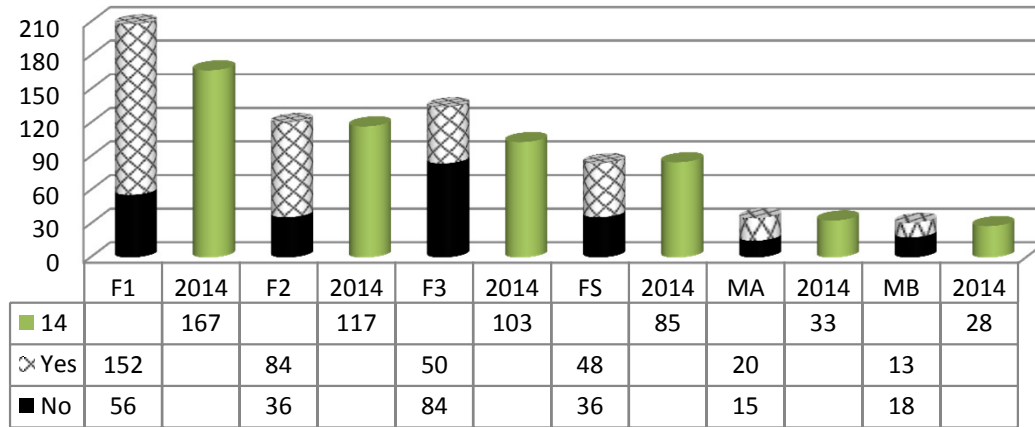


Average Days in Jail

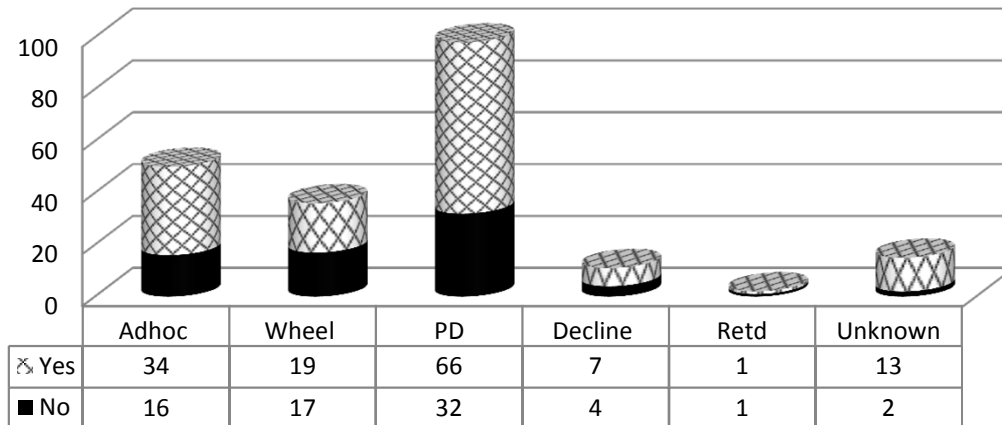


Homeless Jail Population October 2015

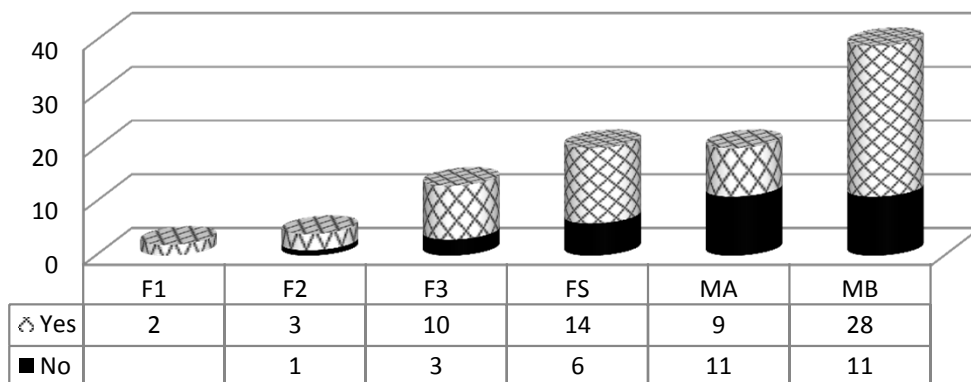
Ave. Days in Jail



Attorney Type



Public Defender Cases Only



Monthly NorthSTAR Intakes

Month-Year	Total inmates booked into the jail with a NorthStar match	Book in Totals for the month	% of people with a NorthStar match booked into the jail
2007 Total	6501	93413	7%
2008 Total	8200	99580	8%
2009 Total	10636	98407	11%
2010 Total	12994	96245	14%
2011 Total	15810	90429	17%
2012 Total	17036	83524	20%
2013 Total	17762	81010	22%
Jan-14	1464	6639	22%
Feb-14	1308	6109	21%
Mar-14	1399	6261	22%
Apr-14	1535	6587	23%
May-14	1430	6456	22%
Jun-14	1375	5832	24%
Jul-14	1489	6453	23%
Aug-14	1523	6227	24%
Sep-14	1427	5936	24%
Oct-14	1504	6072	25%
Nov-14	1213	5429	22%
Dec-14	1252	5167	24%
2014 Total	16919	73168	23%
Jan-15	1431	5941	24%
Feb-15	1231	5164	24%
Mar-15	1546	5979	26%
Apr-15	1584	6350	25%
May-15	1504	5901	25%
Jun-15	1441	5848	25%
Jul-15	1534	6357	24%
Aug-15	1479	6103	24%
Sep-15	1359	5697	24%
Oct-15	1385	5713	24%
2015 Total	14494	59053	25%

Multi-Bookin NorthSTAR Tracking

2015	# Times Booked In	# Unique Clients
	Bookins 15	1
	Bookins 12	2
	Bookins 11	4
	Bookins 10	4
	Bookins 9	8
	Bookins 8	6
	Bookins 7	9
	Bookins 6	36
	Bookins 5	64
	Bookins 4	129
	Bookins 3	497
	Bookins 2	1771
	Bookins 1	8142
Total		10673
As of 11/2/15		

HARRY INGRAM		FY2016 ATLAS STATISTICS											203/HAWTHORNE				
MONTH	BEGINNING # OF PENDING CASES	+NEW CASES RECEIVED THIS MONTH	=TOTAL CASES	TBJ	TBC	PLEAS	REV	GRADUATES	PROBATION MODIFICATIONS	DISMISSALS	OTHERS	TOTAL DISPOSITIONS	ENDING # PENDING CASES **	CURRENT ATLAS PARTICIPANTS	CURRENT PARTICIPANTS IN CUSTODY	FORMER ATLAS PARTICIPANTS	BOND
October	31	4	35	0	0	1	0	8	0	0	0	9	26	20	3	0	17

HARRY INGRAM		FY2016 MISDEMEANOR MENTAL HEALTH COURT STATS											CCCAP1/WADE	
MONTH	BEGINNING # OF PENDING CASES	Rediverts	+NEW CASES RECEIVED THIS MONTH	=TOTAL CASES	TBJ	TBC	PLEAS	DISMISSAL	OTHER	TOTAL DISPOSITIONS	ENDING # PENDING CASES **	CURRENT PARTICIPANTS	NUMBER OF GRADUATES	BOND* **
October	104	0	17	121	0	0	0	2	6	8	113	37	2	37

October 2015		FY2016 MHPD STATS										
MONTH	BEGINNING # OF PENDING CASES	+NEW CASES RECEIVED THIS MONTH	=TOTAL CASES	TRIALS	PLEAS	CON D. DISM.	REVO-CATION	DISMISSALS	INCOMP ETENT	REFE RRALS	OTHER COUN SEL APPT.	TOTAL CLOS ED
R. LENOX	185	29	214	0	7	3	0	5	4	0	8	27
L. TAYLOR	260	26	286	0	7	8	5	4	0	0	4	28

MARIUM UDDIN		FY2016 FELONY COMPETENCY STATISTICS														
MONTH	BEGINNING # OF CASES	NEW CASES THIS MONTH	TBJ	TBC	Alt. Trial Dispos	PLEAS	REVO-CATIONS	DISMISSALS	PROBATION	COMP. HRG.	EXTEN SIONS	CIVIL COMM IT.	MHMR REFER RAL	CONSUL TS	OTHER	ENDING # OF PEOPLE IN OCR
October	118	11	0	0	0	6	0	3	0	7	4	0	0	0	4	10

MARIUM UDDIN		FY2016 MISDEMEANOR COMPETENCY STATISTICS														
MONTH	BEGINNING # OF CASES	NEW CASES THIS MONTH	TBJ	TBC	Alt. Trial Dispos	PLEAS	REVO-CATIONS	DISMISSALS	PROBATION	COMP. HRG.	EXTEN SIONS	CIVIL COMM IT.	MHMR REFER RAL	CONSUL TS	OTHER	ENDING # OF PEOPLE IN OCR
October	66	24	0	0	0	0	0	32	0	21	3	5	0	0	0	16

October 2015		MI Court											
MONTH	TOTAL NEW CASES RECEIVED	NEW CLIENTS AT GREEN OAKS	NEW CLIENTS AT MEDICAL CENTER MCKINNEY	NEW CLIENTS AT PARKLAND	NEW CLIENTS AT DALLAS BEHAVIORAL HEALTH	NEW CLIENTS AT HICKORY TRAILS	NEW CLIENTS AT ZALE LIPSHY	NEW CLIENTS AT TERRELL STATE HOSPITAL	NEW CLIENTS AT OCEANS BEHAVIORAL HOSPITAL	PROBABLE CAUSE HEARINGS HELD	NO CONTEST COMMIT	CONTESTED COMMIT	FORCED MEDS HEARING IN COURT
L. ROBERTS	200	200	0	0	0	0	0	0	0	3	1	3	4
L. TAYLOR	53	0	0	9	16	23	5	0	0	2	0	2	2

RANDA BLACK		MI COURT						
MONTH	NEW CLIENTS	PROBABLE CAUSE HEARINGS HELD	NO CONTEST COMMIT	CONTESTED COMMIT TO TSH	RECOMMITMENTS	MEDICATION HEARINGS	OUTPATIENT	JURY TRIAL
October	76	5	4	17	4	24	0	0

NAME OF MHMR PROGRAM: Metrocare Services
PROGRAM: SNOP

MONTH OF REPORT:10_2015

DATE SUBMITTED: 11_2015

	ATLAS	Post-DDRTC	STAC	Misd.	PRIDE	DDRTC	PROBATION ICM	PAROLE ICM
1. Number of Offenders served at the beginning of the month:	17	37	23	26	3	52	55	89
2. Number of Referrals received:	3	8	2	7	1	6	15	8
3. Number of Assessments:	3	8	2	7	1	6	15	8
4. Number of Admissions:	3	8	2	7	1	6	15	8
5. Average length of stay by months:	2.48	2.15	2.47	2.4	2.79	1.6	3.947	5.16
5. a. Average hours served:	5.74	4.33	5.07	5.25	5.87	7.58	4.1	3.56
6. Services Utilized:	0	0	0	0	0	4	1	1
6. a. Visits to ER (medical)	0	0	0	0	0	2	0	0
6. b. 23-hour Observation (psych)	0	0	0	0	0	2	0	1
6. c. Inpatient Stay (med/psych)	0	0	0	0	0	0	1	0
6. d. Jail days less than 30 days:								
7. Number of Discharges:	4	3	2	5	0	11	4	5
7. a. Terminations (jail more than 30days)	0	2	2	1	0	0	2	1
7. b. Warrants/Suspension: (medical d.c.; abscond)	0	1	0	1	0	5	0	0
7. c. Graduates	4	0	0	3	0	6	2	2
8. Number of Offenders served at the end of month:	16	45	23	27	4	47	55	89
9. Total served in the month:	20	45	23	26	4	58	55	89
10. Number of Offenders on the waiting list:	0	0	0	0	0	0	0	0
11. Minimum/Maximum Census per FTE allocation	20-25	30-38	30-38	30-38	10-12	60	100-125	100-125
12. % of FTE Assigned	1	1.5	1.5	1.5	0.5		5	5
13. Vacancy(s)	0	0	0	0	0	0	0	1

Each FTE covers 20-25

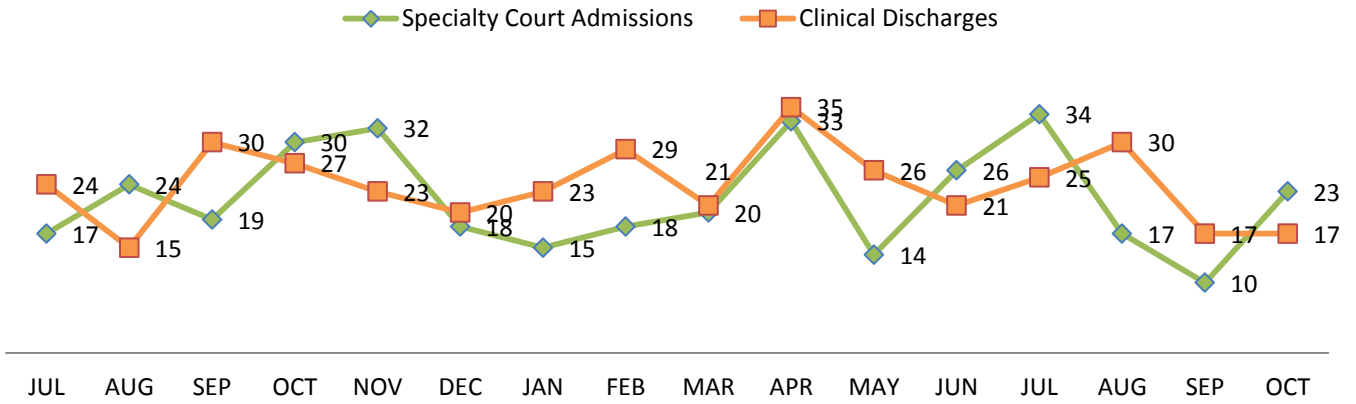
The Bridge October 2015

The Bridge	2014	2014	2014	2015	2015	2015	2015	2015	2015	2015	2015	2015	2015	2015	2015
	Oct.	Nov.	Dec.	Jan.	Feb.	Mar.	Apr.	May	June	July	August	Sep.	Oct.	AVG.	
Bridge Emergency Shelter	333	373	345	354	288	287	291	289	282	292	311	314	307	312.7692	
Bridge Transitional Shelter	122	113	109	119	111	114	107	112	112	105	111	114	119	112.9231	
Direct Referrals to Other Shelters	530	605	597	657	574	595	610	645	710	706	713	709	531	629.3846	
Care Management	855	798	834	870	829	880	902	867	915	954	905	1221	1177	923.6154	
Job Ready (Workforce)	95	81	91	108	96	112	86	100	111	113	99	118	125	102.6923	
Job Placements (Workforce)	27	19	18	23	23	29	34	28	34	29	23	34	30	27	
Housing Placements	23	27	21	37	27	32	31	26	32	20	30	26	28	27.69231	
Metrocare Mental Health Serv.	408	332	369	389	329	375	359	368	420	418	400	393	425	383.4615	
Metrocare Chemical Dep. Serv.	158	104	150	150	194	110	80	51	43	46	99	78	73	102.7692	
Parkland Clinic*	837	641	819	789	740	878	932	777	820	748	821	705	unavailable	792.25	
VA Services	29	36	28	39	43	30	36	28	38	23	26	18	20	30.30769	
Judicial Re-Entry	10	11	8	3	6	9	5	7	12	6	5	3	6	7	
Jail Release (General)	1	1	0	1	9	17	27	24	23	24	34	22	22	15.76923	
Triage Assessments*	457	497	496	544	451	505	509	515	602	544	581	556	475	517.8462	

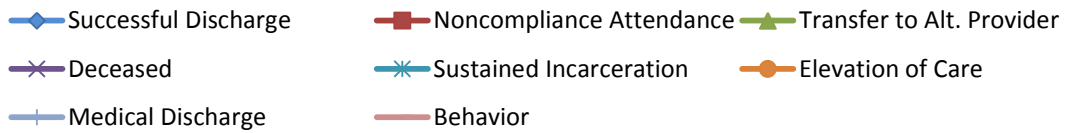
Each category represents *unduplicated guests*, not totals served.

*exception - Parkland Clinic and Triage Assessment numbers are for totals served.

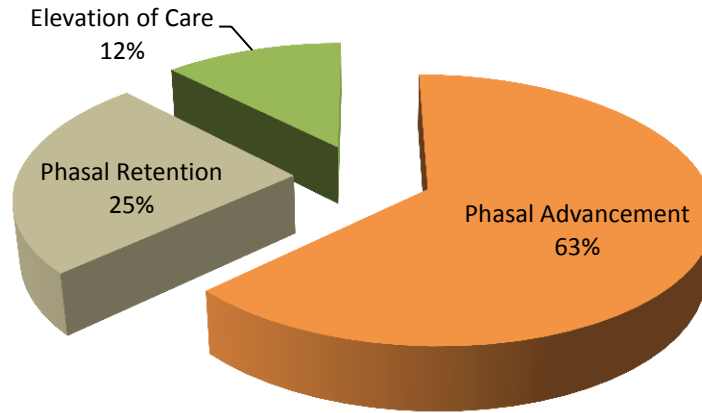
Specialty Court Admission / Discharge Trend



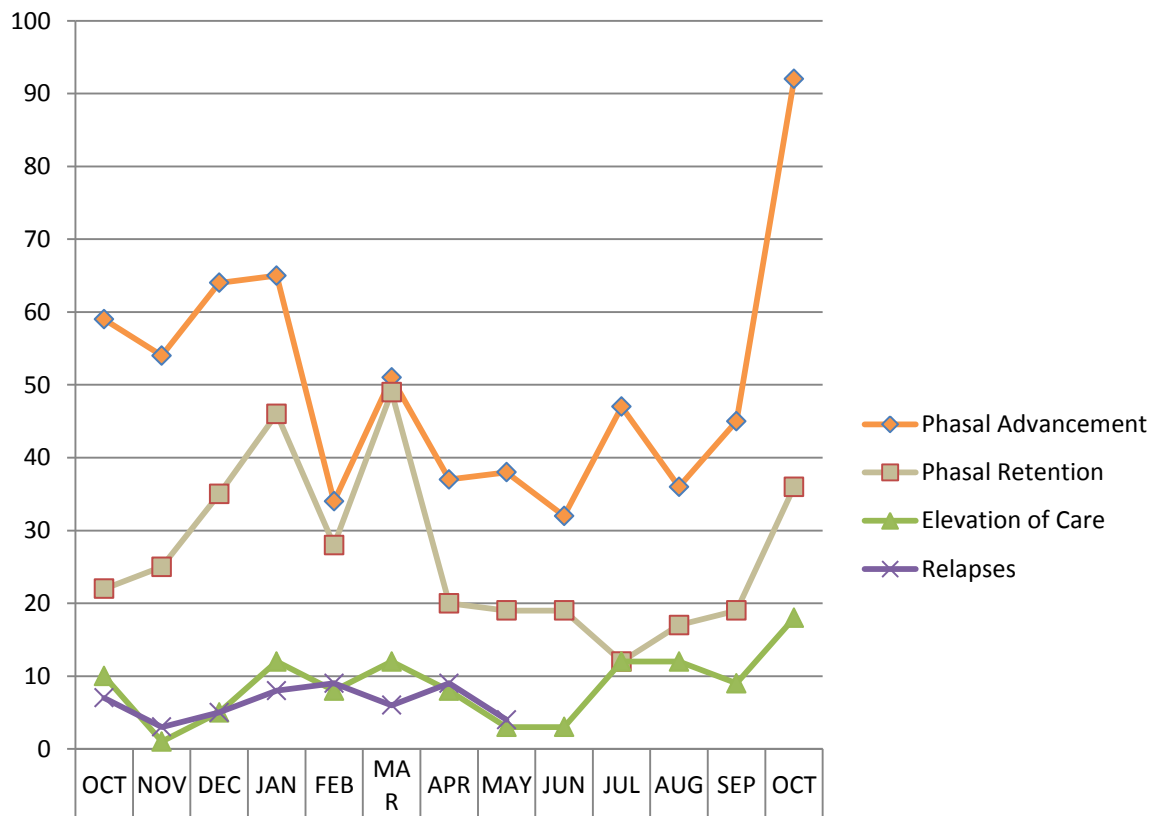
Quarterly Outcome Distribution Trend



OCT-15 Specialty Court Treatment Program Progression Rate

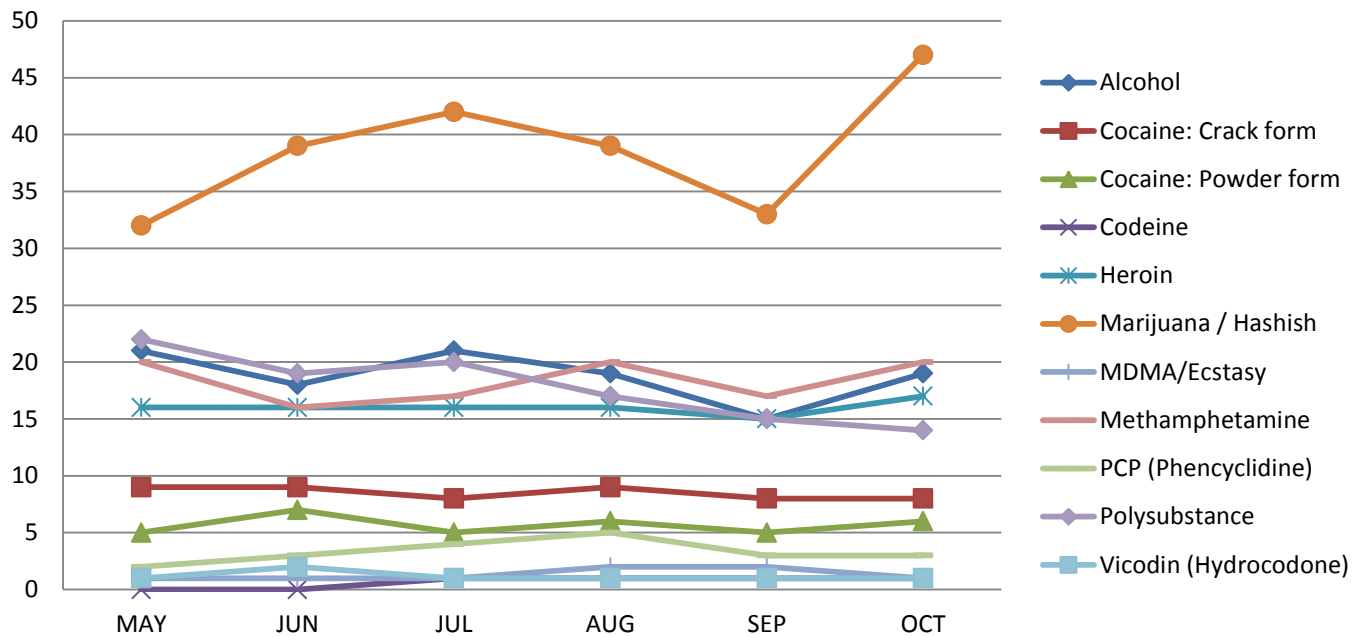


Specialty Court Treatment Program Progression Trend

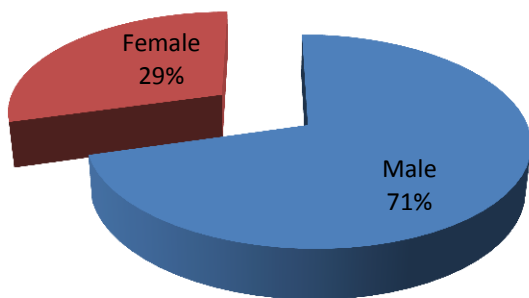


	OCT	NOV	DEC	JAN	FEB	MA R	APR	MAY	JUN	JUL	AUG	SEP	OCT
Phasal Advancement	59	54	64	65	34	51	37	38	32	47	36	45	92
Phasal Retention	22	25	35	46	28	49	20	19	19	12	17	19	36
Elevation of Care	10	1	5	12	8	12	8	3	3	12	12	9	18
Relapses	7	3	5	8	9	6	9	4					

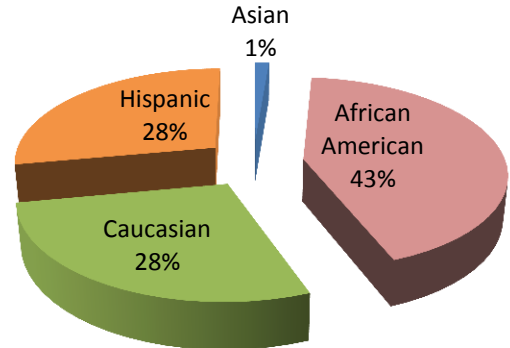
Specialty Court Participants by Reported/Observed Drug of Choice



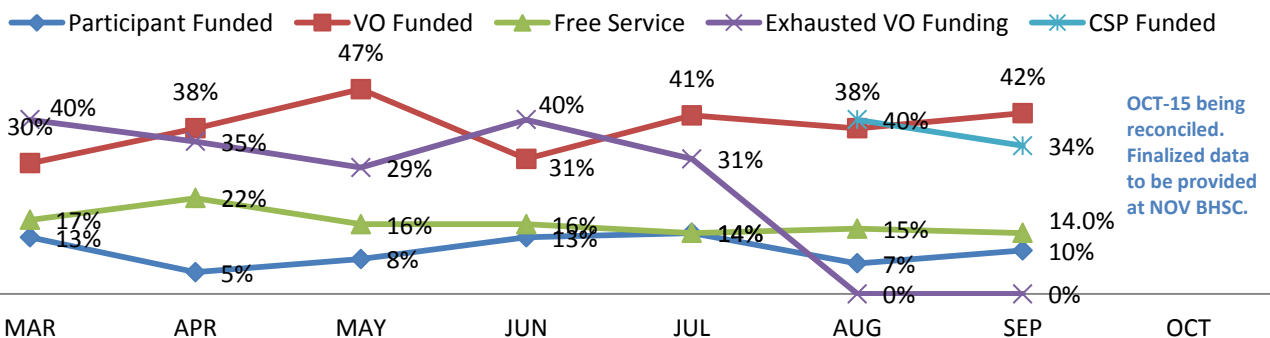
OCT-15 Specialty Court Participants by Gender



OCT-15 Specialty Court Participant by Ethnicity



Specialty Court Participant Funding Trend



Outpatient Competency Restoration Monthly Totals													
	Jan	Feb	Mar	April	May	June	July	Aug	Sept	Oct	Nov	Dec	Total
Beginning of Month	28	22	23	22	29	27	29	29	29	39	34	0	
<u>Misdemeanor</u>	13	12	12	11	16	15	19	16	14	18			
Placed in OCR	3	5	5	8	2	8	4	5	8	7			55
Pending	2	1	0	1	7	0	2	2	4	5			
Homeless @ admit	3	3	3	5	0	4	3	3	4	3			31
Dispo	4	5	6	3	3	4	7	7	4	10	0	0	53
Outpatient to Inpatient	0	0	1	0	1	0	0	3	0	1			6
Abscond	0	1	3	0	1	1	0	2	2	2			12
Restored and Dismissed	4	1	2	2	1	3	6	2	2	5			28
Dismissed	0	3	0	1	0	0	1	0	0	2			7
<u>Felony</u>	15	10	11	11	13	12	10	13	15	21			
Placed in OCR	2	2	2	3	2	1	3	4	7	2			28
Pending	0	0	0	1	2	4	4	5	2	2			
Homeless @ admit	1	1	0	2	0	0	1	0	4	1			10
Dispo	7	1	2	1	3	3	0	2	1	4	0	0	24
Outpatient to Inpatient	0	0	0	0	2	0	0	1	0	2			5
Abscond	0	1	0	0	0	0	0	0	0	1			2
Restored and Dismissed	7	0	2	1	1	2	0	1	1	1			16
Dismissed	0	0	0	0	0	1	0	0	0	0			1
End of Month	22	23	22	29	27	29	29	29	39	34	0	0	283

DIVERT Numbers

<i>FY15</i>	<i>Start of Month</i>	<i>New admissions</i>	<i>DAOpt-out</i>	<i>Unsuccessful discharge</i>	<i>Graduates</i>	<i>End of Month</i>
TOTAL		124	4	34	63	
<i>Ave. per month:</i>		10	0.5	3	6	

FY16	Start of Month	New admissions	DAOpt-out	Unsuccessful discharge	Graduates	End of Month
Sept. 15	163	7	0	2	19	149
Oct. 15	149	16	0	4	4	157
Nov. 15						
Dec. 15						
Jan. 16						
Feb. 16						
Mar. 16						
Apr. 16						
May. 16						
Jun. 16						
Jul. 16						
Aug. 16						

TOTAL	312	23	0	6	23	
--------------	-----	----	---	---	----	--

MMH Court

FY15	Start of Month	New admissions	DA Opt-out	Unsuccessful discharge	Graduates	End of Month
Total		81		43	64	
Ave. Per Month		6.75		3.58333333	5.33333333	

FY16	Start of Month	New admissions	DA Opt-out	Unsuccessful discharge	Graduates	End of Month
Sept. 15	52	9	0	3	3	55
Oct. 15	55	10	0	1	2	62
Nov. 15						
Dec. 15						
Jan. 16						
Feb. 16						
Mar. 16						
Apr. 16						
May-16						
Jun. 16						
Jul. 16						
Aug. 16						

STAC Court

* FY15	Start of Month	New admissions	DA Opt-out	Unsuccessful discharge	Graduates	End of Month
Total		19		16	51	
Ave. Per Month		1.58333333		1.33333333	4.25	

* FY16	Start of Month	New admissions	DA Opt-out	Unsuccessful discharge	Graduates	End of Month
Sept. 15						
Oct. 15						183
Nov. 15						
Dec. 15						
Jan. 16						
Feb. 16						
Mar. 16						
Apr. 16						
May-16						
Jun. 16						
Jul. 16						
Aug. 16						

* Discrepancies in numbers due to a lack of data.

DDAC Court

FY15*	Start of Month	New admissions	DA Opt-out	Unsuccessful discharge	Graduates	End of Month
Total		44		16	20	
Ave. Per Month		3.66666667		1.33333333	1.66666667	

FY16	Start of Month	New admissions	DA Opt-out	Unsuccessful discharge	Graduates	End of Month
Sept. 15	31	11	0	3	0	39
Oct. 15	39	5	0	5	0	39
Nov. 15						
Dec. 15						
Jan. 16						
Feb. 16						
Mar. 16						
Apr. 16						
May-16						
Jun. 16						
Jul. 16						
Aug. 16						

* Denotes that numbers are slightly lower due to missing data.

ATLAS Court

FY15*	Start of Month	New admissions	DA Opt-out	Unsuccessful discharge	Graduates	End of Month
Total		29		22	9	
Ave. Per Month		2.41666667		1.83333333	0.75	

FY16	Start of Month	New admissions	DA Opt-out	Unsuccessful discharge	Graduates	End of Month
Sept. 15	22	5	0	2	0	25
Oct. 15	25	5	0	2	6	22
Nov. 15						
Dec. 15						
Jan. 16						
Feb. 16						
Mar. 16						
Apr. 16						
May-16						
Jun. 16						
Jul. 16						
Aug. 16						

* Denotes that numbers are slightly lower due to missing data.

STAR Court

* FY15	Start of Month	New admissions	DA Opt-out	Unsuccessful discharge	Graduates	End of Month
Total		12		8	9	
Ave. Per Month		1		0.66666667	0.75	

FY16	Start of Month	New admissions	DA Opt-out	Unsuccessful discharge	Graduates	End of Month
Sept. 15	18	2	0	3	3	14
Oct. 15	14	0	0	2	0	12
Nov. 15						
Dec. 15						
Jan. 16						
Feb. 16						
Mar. 16						
Apr. 16						
May-16						
Jun. 16						
Jul. 16						
Aug. 16						

* Denotes slightly lower numbers due to incomplete data.