



DALLAS COUNTY
Criminal Justice Department

Behavioral Health Steering Committee

Thursday, June 15, 2017

Agenda

1. Welcome and Call to Order *Judge Kristin Wade*
2. Review and approval of minutes from April 2017
3. Caruth Smart Justice Grant Update (*Mike Laughlin/MMHPI*)
4. SAMHSA Update *Laura Edmonds*
5. 530 Sub Committee* *Laura Edmonds*
6. BHLT & CSP Update *Charlene Randolph*
7. Jail Reports
 - Hospital Movement* *Janine Capetillo*
 - Pregnant Patients *Shenna Oriabure*
 - Veterans Reports *Shenna Oriabure*
 - Homeless Report *Shenna Oriabure*
 - Northstar Matches *Mike Laughlin*
8. Public Defenders Report *Lynn Richardson*
9. District Attorney's Report *Lee Pierson*
10. Provider Reports
 - The Bridge *Kelly Kane*
 - Metrocare *Crystal Garland*
 - IPS Reports *Enrique Morris**
11. Problem Solving Courts
 - Outpatient Competency *Janine Capetillo*
 - DIVERT *Keta Dickerson*
12. Specialty Courts CSCD *Serena McNair*
13. Announcements
14. Adjourn

***Action and Discussion Items**



DALLAS COUNTY, TEXAS

Minutes of the Behavioral Health Steering Committee (BHSC) Meeting Thursday, April 20, 2017

Call to order and Introductions

The meeting was called to order by Judge Wade at 8:35 am. 31 staff and agency representatives/providers were in attendance with names available on the meeting sign-in sheet.

Minutes review and approval

The **minutes** from the last BHSC meeting held from February 16, 2017, were reviewed and approved following a motion and second by Lee Pierson and Laura Edmonds. No discussion or corrections. Motion unanimously passed and minutes approved without objection.

Guest Speakers – Joyce White and Janie Metzinger

Joyce White, Transicare Housing Development Specialist passed out program materials providing a lengthy presentation on their current efforts to develop additional affordable housing options for the mentally ill releasing from jail. She advised that lack of housing is a clear public health determinate that needs to be addressed. She presented the Housing Navigation Program Goals, Navigator roles, and progress with providers and internal departments/organizations. Several questions about the programs were answered by Ms. White, and program materials were given to attendees. Pat Jones with Parkland brought up a concern about the current problem of getting 2 separate homeless counts which Joyce advised would also be addressed within some of the current planning. The HMIS system input is in transition now and will be expanded soon.

Judge Wade then added a last minute speaker: **Janie Metzinger**, Public Policy Director with MHA of Greater Dallas presented some legislative updates. Janie advised that with the current funding formula being proposed, Dallas will be short \$8.4 million from last year. She encouraged everyone to contact their local state legislators on the Budget Conference Committee to have the funding restored to the base budget. She advised that Article 11 includes this as a “wish list” item rather than as base funding.

Caruth Grant: Jennifer Jaynes provided a summary of the MMHPI materials in the packet (pages 6-7) regarding the Caruth Smart Justice Grant (see March 2017 Update in packet). The 5-year, \$7 million Implementation Grant submitted by MMHPI was awarded in October 2016, and Jennifer Jaynes with MMHPI gave an update on the current status and upcoming actions related to the award. Funding for the county began in January and all the workgroups for the Intercepts 1-5, continue to meet and complete all implementation tasks related to procedures/forms, Court orders, space/staff preparations, modified resource allocations, training curriculums/plans leading up to this week’s beta test launch. MMHPI continues to meet and work with community providers to build up treatment resources for referral and treatment connection upon release. MMHPI staff is also in the early stages of implementing agreements with the City on Intercept 1 police and EMT response options in the coming months. They have established job descriptions and are in the process of hiring staff.

Data and reports for BHSC – Judge Wade

Program and Department Updates: The program and outcome data, updates, and reports were presented and accepted by relevant dept./agency staff for the SAMHSA Grant, 530 Subcommittee, BHLT/CSP, Public Defenders, District Attorneys, CJ Dept. Jail reports, as well as provider reports (The Bridge, Metrocare, and IPS), and the various Problem Solving and Specialty Courts (see packet for details).

SAMHSA Grant update verbally given by Laura Edmonds on the data and activities with a note that we won't be able to use Grant money of the ELM monitoring for participants (will have to be County money). Judge Mays also noted that the Admission Director at the Nexus Recovery Center being used for the Grant is a 2008 STAC Court graduate.

Laura Edmonds presented a summary of current 530 Subcommittee activities and expenses to include March 8, 2017 subcommittee meeting (see packet pgs. 9-10). Motion and second for approval of the minutes passed unanimously. Laura also advised that the 530 Subcommittee will present at **TASC Conference Debrief on Friday, May 5 from 1130-1pm at the Central Jury Room** with lunch provided with RSVP to Shenna.

Vickie Rice also informed the group that they will soon start planning an interdepartmental training calendar so we can all better coordinate planning activities and distribution of that information.

CSP stats and metrics were reviewed/presented by Alyssa, and are exceeding year-to-date outcomes with all other service goal metrics met. See packet pgs. 11-17 for details. There is also an uptick in the numbers due to the new Caruth MH PR Bonds.

Charlene and CSP providers continue to communicate with NTHBA to facilitate the recent transition planning since the care manager and Specialty Court Aftercare Engagement Packages currently going through CSP and will now be coordinated through NTBHA. Process continues to go well. HHSC has submitted request for 21 month extension with more information to follow.

Jail and hospital movement, pregnant defendants, and homeless data and reports were presented by Janine Capetillo and Shenna Oriabure and are found in the meeting packet on pages 18-27. There was a big increase in competency numbers. Additionally, Shenna noted that the veterans are often cycling out of the jail pretty fast making it hard to get the designated staff catching them before release due to limited staffing. No other concerns or questions from the group on those items. Mike Laughlin provided the monthly CCQ match for MH prevalence which according to TLETS is still high 63%. Mike/Alyssa/Leah advised the Jail MH screen was too inclusive, and also that the data sources of this was being reviewed with IT to refine the data feeds and hopefully resolve the issue soon. **All other department and agency data reports and program updates** were accepted as read, and can be reviewed in the meeting packet.

Vickie Rice presented the **Public Defender** MH case data and reports (page 30 of packet) noting an increase in numbers due to Atlas/DIVERT. No other concerns/comments at this time.

Lee Pierson provided the **DA data updates and report from pages 31-35** noting there were 20 SET Court cases not in the report. Also, Kendall is back from leave and they are fully staffed again. They also noted they have some NGBRI cases missing and now have a new system to track it.

Provider Reports

Kelly Lane from The Bridge (pg. 36) advised that Housing Vouchers have not been happening since November 2016.

IPS: Will present their material next month.

Metrocare: Crystal Garland presented Metrocare data/reports (pg. 37) with no further comments or questions.

Specialty Court: Janine presented OCR Court data with no concerns, questions, or further comments. Serena McNair provided the other Specialty Court numbers (pages 35-39) commenting that Atlas Court numbers are down and that Judge Hawthorne was working to resolve the issue. Metrocare and Specialty Court numbers are down and needs to be addressed. Judge Wade pointed out that we might want to also look at DA incentives for this.

Announcements

Judge Wade asked for announcements from the departments/agencies.

Judge Lela Mays (STAC Court): reminded everyone that they are coming up on the STAC 10 year anniversary with a big celebration planned for May 12th with details to follow.

Judge Nancy Kennedy (new in Nov. 2016 to CDC#2) introduced herself as a new member who will working with CJ Dept. to set up new felony OCR Court modeled after the misdemeanor OCR we have now. They will start with 5 or so at first, and then increase with the idea to give greater clarity and judicial oversight/supervision with the felony OCR and NGRI cases that too often don't improve to competency and linger in the system.

Shenna and Laura announced the next monthly "Delightful Discussions" brown bag in-service with information and guidance on Specialty Courts is on the April 21, 2017, from 1130-1215pm. It will be held in the in CCCAP#1 on 3rd floor, and this month's topic will be: **Incentives, Sanctions and Therapeutic Adjustments**. Judge Wade promoted this and encouraged the DA and PD offices to attend and participate. Desert will be provided with door prizes. RSVP to Shenna via email.

Judge Wade asked the group for consideration to go to bi-monthly meetings and data packets every month with a motion in favor made by Lee and a second by Alyssa. Passed unanimously. Vickie made a point to remind everyone that we need to focus more on program development and outreach to partners and stakeholders to build resources and capacity.

Adjournment

The meeting was adjourned by Judge Wade at 935am. The next bi-meeting is set for Thursday, June 15, 2017 at 830am in the same location.

Meadows Mental Health Policy Institute

Community Stakeholder Project Status Update—May 2017

The Caruth Smart Justice Planning Grant Phase II proposal was submitted to the W.W. Caruth, Jr. Foundation at the Communities Foundation of Texas on July 15, 2016. On October 5, 2016, the trustees of the W.W. Caruth Foundation at the Communities Foundation of Texas approved the grant proposal, which enables the Meadows Mental Health Policy Institute to work closely with Dallas County, the City of Dallas, and a broad array of partners to implement the Dallas County Smart Justice Project.

MMHPI and its partners began implementation of this project in January 2017, ensuring that it is aligned with and supports the North Texas Behavioral Health Authority (NTBHA) transition. We continue to engage local and state philanthropists to seek matching funds to support implementation. Additionally, we continue to seek the support of local hospitals to help bridge the gap between the private health care system and the public behavioral health and criminal justice communities.

Intercept 1 (Law Enforcement)

On April 13, 2017, MMHPI partnered with the Dallas Police Department to offer the first HIPAA Consortium for first responders, with MMHPI's Vice President of Adult Policy, John Petrila, serving as presenter. The forum allowed first responders and community clinical providers, some of whom play active roles in the Intercept I RIGHT Care multidisciplinary response team, to ask questions related to the Caruth implementation, such as whether a mental health professional on the scene can discuss their impressions with a law enforcement officer, and whether health care professionals can provide information to jail staff.

On April 10, 2017, Acting Assistant Chief George Gamez of the Dallas-Fire-Rescue Department presented a briefing on the RIGHT Care Pilot Program to the City Council committee meeting. The presentation was well received by City Council members, who voted to move this pilot program on to the full City Council meeting scheduled in May for final consideration.

The latest Intercept I workgroup meeting was held in the Meadows district on April 26, 2017.

Intercept 2 (Initial Detention/Initial Court Hearings) / Intercept 3 (Jails/Courts) / Intercept 4 (Re-Entry)

On April 6, 2017, the district judges approved additional court order forms for the new mental health assessment that will aid in identifying clients eligible for mental health bond release.

With the award of the Caruth implementation grant, the three work groups with the Dallas County Criminal Justice Department are finalizing key tasks for the implementation of timely and more efficient mental health bond releases. On April 11, 2017, all three work groups participated in a training session, held at the Frank Crowley Courts Building, that addressed implementation issues. Each workgroup presented their own relevant portions of new documents, procedures, and system changes that will support the implementation of this project. On April 17, 2017, a beta test launch of the court, attorney, pretrial, and assessment processes was initiated. As a result of the beta test, the jail staff is working through any identified challenges, mainly concerning bond release coordination and the timely processing, filing, and distribution of court documents by the Clerk's Office.

County Jail and Criminal Justice Department staff continue to make progress with space allocation for defendant contacts to accommodate changes that accompany grant implementation. Additionally, several clinical and internal policy staff are completing improvements to the treatment connection and referral processes to ensure compliance and follow-through with treatment.

The last three pretrial officers to be added to the project are currently undergoing recruitment, hiring, and training. The Pretrial Department has received consultation from Lila Oshatz, with The Council of State Governments, on using evidence-based practices to improve bond supervision outcomes.

Intercept 5 (Community Corrections and Services)

With support from the MMHPI team, Caruth ACT and FACT provider housing specialists participated in a second Permanent Supportive Housing training, which provided an in-depth look at local housing options and how to best access the Homeless Management Information System (U.S. Department of Housing and Urban Development). This training was held in two sessions on April 25 and 27, 2017, with the assistance of Ann Denton (national expert on evidence-based supportive housing and President of the Board of the Travis County Strategic Housing Finance Corporation), Myrl Jane Humphrey (North Texas Behavioral Health Authority), and Joyce White (Dallas County Criminal Justice and Transicare).

Meadows Mental Health Policy Institute

Community Stakeholder Project Status Update—June 2017

The Caruth Smart Justice Planning Grant Phase II proposal was submitted to the W.W. Caruth, Jr. Foundation at the Communities Foundation of Texas on July 15, 2016. On October 5, 2016, the trustees of the W.W. Caruth Foundation at the Communities Foundation of Texas approved the grant proposal, which enables the Meadows Mental Health Policy Institute to work closely with Dallas County, the City of Dallas, and a broad array of partners to implement the Dallas County Smart Justice Project.

MMHPI and its partners began implementation of this project in January 2017, ensuring that it is aligned with and supports the North Texas Behavioral Health Authority (NTBHA) transition. We continue to engage local and state philanthropists to seek matching funds to support implementation. Additionally, we continue to seek the support of local hospitals to help bridge the gap between the private health care system and the public behavioral health and criminal justice communities.

Intercept 1 (Law Enforcement)

MMHPI staff continues to provide technical assistance to stakeholders with the Dallas Fire-Rescue Department (DFRD) and the Dallas Police Department (DPD) as they coordinate efforts to identify programming and logistical needs. On May 24, 2017, the Dallas City Council met to discuss and ultimately approve the acceptance of a sub-grant award for the development of the RIGHT Care Program, originally presented to the city council by Acting Assistant Chief George Gamez of the DFRD. Additionally, on June 2nd, the City of Dallas signed Intercept 1 city contracts and delivered them to MMHPI for final signature. The date of the next Intercept I workgroup meeting is scheduled for June 8th.

Intercept 2 (Initial Detention/Initial Court Hearings) / Intercept 3 (Jails/Courts) / Intercept 4 (Re-Entry)

With the award of the Caruth implementation grant, the three work groups with the Dallas County Criminal Justice Department are finalizing key tasks for the implementation of timely and more efficient mental health bond releases.

Criminal justice staff conducted an evaluation of the April 2017 beta test (an effort aimed at tracking and reviewing the new court, attorney, pretrial, and assessment processes) and have made necessary adjustments. According to a May 26th update from Criminal Justice Department staff, jail and Parkland Health & Hospital System staff have been working together to complete mental health screens on ALL defendants at book-in. Adapt Community Solutions

staff has been successful in extracting those records, triaging and prioritizing them for action, and sending a daily list to pretrial officers for criminal records review. The beta test launch also addressed the requirement that clinical assessments of eligible defendants must be ordered by Magistrate judges. These judges now dedicate dockets each weekday afternoon to accommodate the new Mental Health Personal Recognizance Bond processes. The District Attorney's Office staff have fine-tuned their review of documents, criminal history, and victim information in order to address any concerns by the government about defendants being considered for release. Additionally, the Clerk's Office has modified its protocols to ensure all legal documents are completed and disclosed for timely bond releases. Criminal Justice Department staff continue working with treatment providers to improve referral processes and connections to treatment to ensure client follow through and compliance.

The last three pretrial officers to be added to the project have been selected and are rapidly being hired and trained. The Pretrial Department continues to receive consultation from The Council of State Governments on using evidence-based practices to improve bond supervision outcomes.

Intercept 5 (Community Corrections and Services)

MMHPI staff and its partner Ann Denton (national expert on evidence-based supportive housing and President of the Board of the Travis County Strategic Housing Finance Corporation) continue to provide and develop Permanent Supportive Housing training to Caruth ACT and FACT providers. Additionally, Ms. Denton is working to increase housing options and related resources for the Caruth ACT and FACT providers once deployment of client expansion begins.

	Oct.	Nov.	Dec.	Jan.	Feb.	Mar.	Apr.	May	June	July	Aug.	Sep.	FY2017 Total	FY2016 Total
Number of New Admissions	8	4	1	3	7	9	5	1					38	33
Number of Successful Completions	3	6	2	5	0	4	8	4					32	24
Number of Unsuccessful Completions	1	1	0	0	1	2	2	0					7	9
Average Days in Jail from Referral to Admission	5	6	3	4	6	9	10	6					6	4
	0													
Number of New Admissions on ELM	6	3	1	2	7	8	4	1					32	12
Program Referral Follow-Ups by Type (running total per progrant/grant year)														
Court Program Graduate													0	6
Active In Court Program													18	3
Active In Treatment at Nexus													3	N/A
In Jail													4	1
Re-Arrested and Released to Community													4	10
Re-Arrested and Released to Further Treatment													4	7
Released to TDCJ													0	1



	Past Year Avg	2016-10	2016-11	2016-12	2017-01	2017-02	2017-03	Average:	Sum:
Total Service Episodes:	768	704	717	552	695	901	1,191	793.33	4,760
Total Unique Consumers:	589	696	672	478	593	764	967	695	4,170
% Change to DY 4		118.17%	114.09%	81.15%	100.68%	129.71%	164.18%		

<u>Total Encounters by Type:</u>		2016-10	2016-11	2016-12	2017-01	2017-02	2017-03	Average:	Sum:
Triage		704	717	552	695	901	1,191	793.33	4,760
Care Coordination		2,736	2,532	2,304	2,627	2,588	2,942	2,621.5	15,729
F2F Encounter		242	255	252	211	237	292	248.17	1,489
Sum:		3,682	3,504	3,108	3,533	3,726	4,425	3,663	21,978



	2016-10	2016-11	2016-12	2017-01	2017-02	2017-03	Average:	Sum:
Service Episodes:	704	717	552	695	901	1,191	793.33	4,760

<u>Unique Consumers:</u>	2016-10	2016-11	2016-12	2017-01	2017-02	2017-03	Average:	Sum:
By N* ID	635	665	469	586	755	959	678.17	4,069
By Client ID	61	7	9	7	9	8	16.83	101
TOTAL Unique Consumers:	696	672	478	593	764	967	695	4,170
TOTAL Unique Consumers as %:	98.86%	93.72%	86.59%	85.32%	84.79%	81.19%		

<u>Unique F2F:</u>	2016-10	2016-11	2016-12	2017-01	2017-02	2017-03	Average:	Sum:
By N* ID	188	220	189	151	171	227	191	1,146
By Client ID	37	3	6	1	6	2	9.17	55
TOTAL Unique F2F:	225	223	195	152	177	229	171.57	1,201
TOTAL Unique F2F as %:	92.98%	87.45%	77.38%	72.04%	74.68%	78.42%		

	2016-10	2016-11	2016-12	2017-01	2017-02	2017-03	2017-04		Average:	Sum:
F2F Percentages:	34.38%	35.56%	45.65%	30.36%	26.30%	24.52%			32.80%	196.77%



Crisis Services Project

Frank Crowley
 CSP Monthly Report DY6_No Graphs
 Last Refresh: 4/25/17 at 4:50:46 PM GMT-05:00

Encounters by Type:	2016-10	2016-11	2016-12	2017-01	2017-02	2017-03	Average:	Sum:
Triage	704	717	552	695	901	1,191	793.33	4,760
Care Coordination	2,736	2,532	2,304	2,627	2,588	2,942	2,621.5	15,729
F2F Encounter	242	255	252	211	237	292	248.17	1,489
TOTAL Encounters:	3,682	3,504	3,108	3,533	3,726	4,425	3,663	21,978

Female:	2016-10	2016-11	2016-12	2017-01	2017-02	2017-03	Average:	Sum:
Black	100	100	86	69	110	118	97.17	583
Hispanic	20	30	18	24	33	34	26.5	159
Other			2	1	2	2	1.75	7
Unknown	1	1	2		1	1	1.2	6
White	64	53	47	46	58	87	59.17	355
TOTAL Female:	185	184	155	140	204	242	185	1,110

Male:	2016-10	2016-11	2016-12	2017-01	2017-02	2017-03	Average:	Sum:
Black	291	295	189	260	325	373	288.83	1,733
Hispanic	74	57	44	51	85	148	76.5	459
Other	6	2	2	6	2	9	4.5	27
Unknown	3	9	3	9	2	5	5.17	31
White	136	123	85	125	142	187	133	798
TOTAL Male:	510	486	323	451	556	722	508	3,048



<u>Gender Not Collected:</u>	2016-10	2016-11	2017-01	2017-02	2017-03	Average:	Sum:
Unknown	1	2	2	4	3	2.4	12
TOTAL Gender Not Collected:	1	2	2	4	3	2.4	12

<u>Age of Triage Encounters:</u>	2016-10	2016-11	2016-12	2017-01	2017-02	2017-03	Average:	Sum:
	696	672	478	593	764	967	695	4,170
TOTAL Age of Triage Encounters:	696	672	478	593	764	967	695	4,170

<u>Age of F2F Encounters:</u>	2016-10	2016-11	2016-12	2017-01	2017-02	2017-03	Average:	Sum:
	225	223	195	152	177	229	200.17	1,201
TOTAL Age of F2F Encounters:	225	223	195	152	177	229	200.17	1,201

Triage 12	4,084
Recidivism 12-12	671
Recidivism 12-12%	16.43%

Triage 6	4,084
Recidivism 6-6	671
Recidivism 6-6%	16.43%

Triage 6	4,084
Recidivism 6-12	671
Recidivism 6-12%	16.43%

	October	November	December	January	February	March
Year MO	2016/10	2016/11	2016/12	2017/01	2017/02	2017/03
Recidivism 12-12	9	65	140	246	412	671
Triage 12	678	1,338	1,808	2,391	3,131	4,084
Recidivism 12-12%	1.33%	4.86%	7.74%	10.29%	13.16%	16.43%

	October	November	December	January	February	March
Year MO	2016/10	2016/11	2016/12	2017/01	2017/02	2017/03
Recidivism 6-6	9	65	140	246	412	671
Triage 6	678	1,338	1,808	2,391	3,131	4,084
Recidivism 12-12%	1.33%	4.86%	7.74%	10.29%	13.16%	16.43%

	October	November	December	January	February	March
Year MO	2016/10	2016/11	2016/12	2017/01	2017/02	2017/03
Recidivism 6-12	9	65	140	246	412	671
Triage 6	678	1,338	1,808	2,391	3,131	4,084
Recidivism 12-12%	1.33%	4.86%	7.74%	10.29%	13.16%	16.43%

APRIL 2017 Monthly Report

Dallas County Crisis Services Program	Program Specific and Systems Update	Summary of NTBHA's Monthly Activities	Action Items/Concerns
1	Adapt Community Solutions (ACS) – Targets member released from jail using ACS to ensure continuity of care	Conducted case consultations on approximately 7 referrals.	Not Applicable
2	Transicare Post Acute Transitional Services (PATS) – Targets high utilizers released from jail with more intensive need to ensure continuity of care	<p>Provided case consultation and clinical support during PATS/FACT case review.</p> <p>Resolved Rx issue for 3 consumers. Provided Local Case Numbers for 1 individual.</p>	Not Applicable
3	<p>ACT Forensic Diversion Unit (FDU) – Provides ACT services for high utilizers of the legal system.</p> <p>Responsible for approving evaluations of FDU referrals and FDU oversight</p>	<p>Clinical review of cases for appropriate LOC recommendations on 9 FDU referrals, 7 of which were approved.</p> <p>Reviewed 6 recovery plans. There was no MD consult during this reporting period.</p>	Next FDU meeting TBA (tentatively sometime in May)
4	Caruth Smart Justice	Participated in planning meeting with Dallas Metrocare re: transition of clients into outpatient tx and transportation concerns.	Brainstorm/Develop NTBHA involvement in assisting both CMHPs and DCCJ in this initiative

Transicare Reporting Crisis Services Project

		2016-10	2016-11	2016-12	2017-01	2017-02	2017-03
1	Beginning Census	115	115	107	103	98	123
2	REFERRALS	46	33	32	23	42	54
3	Admissions						
4	Referred Admitted	19	18	16	8	26	27
5	No Admit Client Refusal	2	1	1	2	0	1
6	No Admit Criteria	1	1	3	0	1	0
7	No Admit Structural	2	6	2	2	2	2
8	Pending	22	7	10	11	13	15
9	<i>PRIOR PENDING</i>						
10	Pending Admitted	12	17	2	4	8	10
11	No Admit Client Refusal	3	3	4	1	0	0
12	No Admit Criteria	2	1	1	1	0	0
13	No Admit Structural	0	4	3	4	1	1
14							
15	Total Admissions	31	35	18	12	34	37
16							
17	Discharges						
18	Success Transfer	7	3	4	3	2	4
19	DC Midterm Disengage	12	16	6	2	4	3
20	DC Rapid Disengage	6	6	2	4	2	14
21	DC Structural	6	18	10	9	1	13
22	Total Discharged	31	43	22	18	9	34
23	Active End Of Month	115	107	103	97	123	126
24							
25	Outcome Data						
26	<i>Terrell State Hospital Linkages</i>						
27	≤7 Connect To Prescriber	1	6	2	1	4	5
28	≤30 Connect To Prescriber	0	1	0	0	0	0
29	Missed Metric	1	3	0	1	3	3
30	Total Released	2	10	2	2	7	6
31							
32	Cummulative ≤7 Connect %	50.0%	58.3%	64.3%	62.5%	60.9%	65.5%
33	Cummulative ≤30 Connect %	50.0%	66.7%	71.4%	68.8%	65.2%	69.0%
34	Missed Metric	50.0%	33.3%	28.6%	31.3%	34.8%	37.9%
35	<i>Unduplicated Served</i>						
36	Monthly Unduplicated	141	141	124	111	119	154
37	DSRIP YTD Unduplicated Served	141	180	209	227	259	308
38							
39	<i>Encounter Data</i>						
40	F2F Encounter	848	840	730	756	799	856
41	Care Coord	198	138	113	82	30	117
42	Total	1046	978	843	759	829	759



	Past Year Avg	2016-10	2016-11	2016-12	2017-01	2017-02	2017-03	2017-04	Average:	Sum:
Total Service Episodes:	768	704	717	552	695	901	1,191	960	817.14	5,720
Total Unique CID:	589	696	673	478	594	766	971	754	704.57	4,932
Total Unique SID		678	661	471	586	743	964	723	689.43	4,826
% Change to DY 4 by CID		118.17%	114.26%	81.15%	100.85%	130.05%	164.86%	128.01%		

<u>Total Encounters by Type:</u>		2016-10	2016-11	2016-12	2017-01	2017-02	2017-03	2017-04	Average:	Sum:
Triage		704	717	552	695	901	1,191	960	817.14	5,720
Care Coordination		2,736	2,532	2,304	2,627	2,588	2,943	2,239	2,567	17,969
F2F Encounter		242	255	252	211	237	292	301	255.71	1,790
Sum:		3,682	3,504	3,108	3,533	3,726	4,426	3,500	3,639.86	25,479



	2016-10	2016-11	2016-12	2017-01	2017-02	2017-03	2017-04	Average:	Sum:
Service Episodes:	704	717	552	695	901	1,191	960	817.14	5,720

	2016-10	2016-11	2016-12	2017-01	2017-02	2017-03	2017-04	Average:	Sum:
Unique Consumers:									
By N* ID	601	597	423	501	532	627	530	544.43	3,811
By Client ID	95	76	55	93	234	344	224	160.14	1,121
TOTAL Unique Consumers:	696	673	478	594	766	971	754	704.57	4,932
TOTAL Unique Consumers as %:	98.86%	93.86%	86.59%	85.47%	85.02%	81.53%	78.54%		

	2016-10	2016-11	2016-12	2017-01	2017-02	2017-03	2017-04	Average:	Sum:
Unique F2F:									
By N* ID	185	185	164	117	111	155	179	156.57	1,096
By Client ID	40	38	31	35	66	75	63	49.71	348
TOTAL Unique F2F:	225	223	195	152	177	230	242	180.5	1,444
TOTAL Unique F2F as %:	92.98%	87.45%	77.38%	72.04%	74.68%	78.77%	80.40%		

	2016-10	2016-11	2016-12	2017-01	2017-02	2017-03	2017-04	2017-05		Average:	Sum:
F2F Percentages:	34.38%	35.56%	45.65%	30.36%	26.30%	24.52%	31.35%			32.59%	228.13%



Crisis Services Project

Frank Crowley

CSP Monthly Report DY6_No Graphs

Last Refresh: 6/5/17 at 11:05:41 AM GMT-05:00

Encounters by Type:	2016-10	2016-11	2016-12	2017-01	2017-02	2017-03	2017-04	Average:	Sum:
Triage	704	717	552	695	901	1,191	960	817.14	5,720
Care Coordination	2,736	2,532	2,304	2,627	2,588	2,943	2,239	2,567	17,969
F2F Encounter	242	255	252	211	237	292	301	255.71	1,790
TOTAL Encounters:	3,682	3,504	3,108	3,533	3,726	4,426	3,500	3,639.86	25,479

Female:	2016-10	2016-11	2016-12	2017-01	2017-02	2017-03	2017-04	Average:	Sum:
Black	99	98	86	69	111	119	96	96.86	678
Hispanic	17	29	17	24	33	35	29	26.29	184
Other			2	1	2	2	2	1.8	9
Unknown	1	1	2		1	1	2	1.33	8
White	63	51	46	46	58	87	83	62	434
TOTAL Female:	180	179	153	140	205	244	212	187.57	1,313

Male:	2016-10	2016-11	2016-12	2017-01	2017-02	2017-03	2017-04	Average:	Sum:
Black	284	286	189	260	325	374	289	286.71	2,007
Hispanic	71	57	44	51	86	148	110	81	567
Other	6	2	2	6	2	9	3	4.29	30
Unknown	3	9	3	9	2	5	3	4.86	34
White	133	124	85	126	142	188	135	133.29	933
TOTAL Male:	497	478	323	452	557	724	540	510.14	3,571



<u>Gender Not Collected:</u>	2016-10	2016-11	2016-12	2017-01	2017-02	2017-03	2017-04	Average:	Sum:
Unknown	19	16	2	2	4	3	2	6.86	48
TOTAL Gender Not Collected:	19	16	2	2	4	3	2	6.86	48

<u>Age of Triage Encounters:</u>	2016-10	2016-11	2016-12	2017-01	2017-02	2017-03	2017-04	Average:	Sum:
	696	673	478	594	766	971	754	704.57	4,932
TOTAL Age of Triage Encounters:	696	673	478	594	766	971	754	704.57	4,932

<u>Age of F2F Encounters:</u>	2016-10	2016-11	2016-12	2017-01	2017-02	2017-03	2017-04	Average:	Sum:
	225	223	195	152	177	230	242	206.29	1,444
TOTAL Age of F2F Encounters:	225	223	195	152	177	230	242	206.29	1,444

Triage 12	4,802
Recidivism 12-12	745
Recidivism 12-12%	15.51%

Triage 6	4,085
Recidivism 6-6	553
Recidivism 6-6%	13.54%

Triage 6	4,085
Recidivism 6-12	733
Recidivism 6-12%	17.94%

	October	November	December	January	February	March	April
Year MO	2016/10	2016/11	2016/12	2017/01	2017/02	2017/03	2017/04
Recidivism 12-12	9	65	129	205	346	550	745
Triage 12	678	1,338	1,808	2,391	3,131	4,085	4,802
Recidivism 12-12%	1.33%	4.86%	7.13%	8.57%	11.05%	13.46%	15.51%

	October	November	December	January	February	March	April
Year MO	2016/10	2016/11	2016/12	2017/01	2017/02	2017/03	2017/04
Recidivism 6-6	9	65	129	205	346	550	553
Triage 6	678	1,338	1,808	2,391	3,131	4,085	4,085
Recidivism 12-12%	1.33%	4.86%	7.13%	8.57%	11.05%	13.46%	13.54%

	October	November	December	January	February	March	April
Year MO	2016/10	2016/11	2016/12	2017/01	2017/02	2017/03	2017/04
Recidivism 6-12	9	65	129	205	346	550	733
Triage 6	678	1,338	1,808	2,391	3,131	4,085	4,085
Recidivism 12-12%	1.33%	4.86%	7.13%	8.57%	11.05%	13.46%	17.94%

MAY 2017 Monthly Report

Dallas County Crisis Services Program	Program Specific and Systems Update	Summary of NTBHA's Monthly Activities	Action Items/Concerns
1	Adapt Community Solutions (ACS) – Targets member released from jail using ACS to ensure continuity of care	Conducted case consultations on approximately 20 referrals.	Not Applicable
2	Transicare Post Acute Transitional Services (PATS) – Targets high utilizers released from jail with more intensive need to ensure continuity of care	<p>Provided case consultation and clinical support during PATS/FACT case review.</p> <p>Completed hospitalization inquiries for 3 clients.</p>	Not Applicable
3	<p>ACT Forensic Diversion Unit (FDU) – Provides ACT services for high utilizers of the legal system.</p> <p>Responsible for approving evaluations of FDU referrals and FDU oversight</p>	<p>Clinical review of cases for appropriate LOC recommendations on 15 FDU referrals, 10 of which were approved.</p> <p>Reviewed 5 recovery plans. There was no MD consult during this reporting period.</p> <p>Assisted in Recovery Plan Training for FDU/ACT caseworkers</p> <p>Participated in Quarterly FDU Meeting</p>	Not Applicable
4	Caruth Smart Justice	Participated in planning meeting with NTBHA contracted providers re: transition of clients into outpatient tx and transportation concerns.	Not Applicable

5	CSP – Cottages Project – Housing complex of 50 cottages that provides housing, mental health assessments and counseling for clients categorized as high utilizers of MH and judicial systems	Met with Dallas Co regarding NTBHA involvement in the screening process for candidates for the Cottages.	Will develop and begin implementing parameters to identify low, moderate, and high levels of system utilization. (DUE: June 5 th , 2017)
---	--	--	---

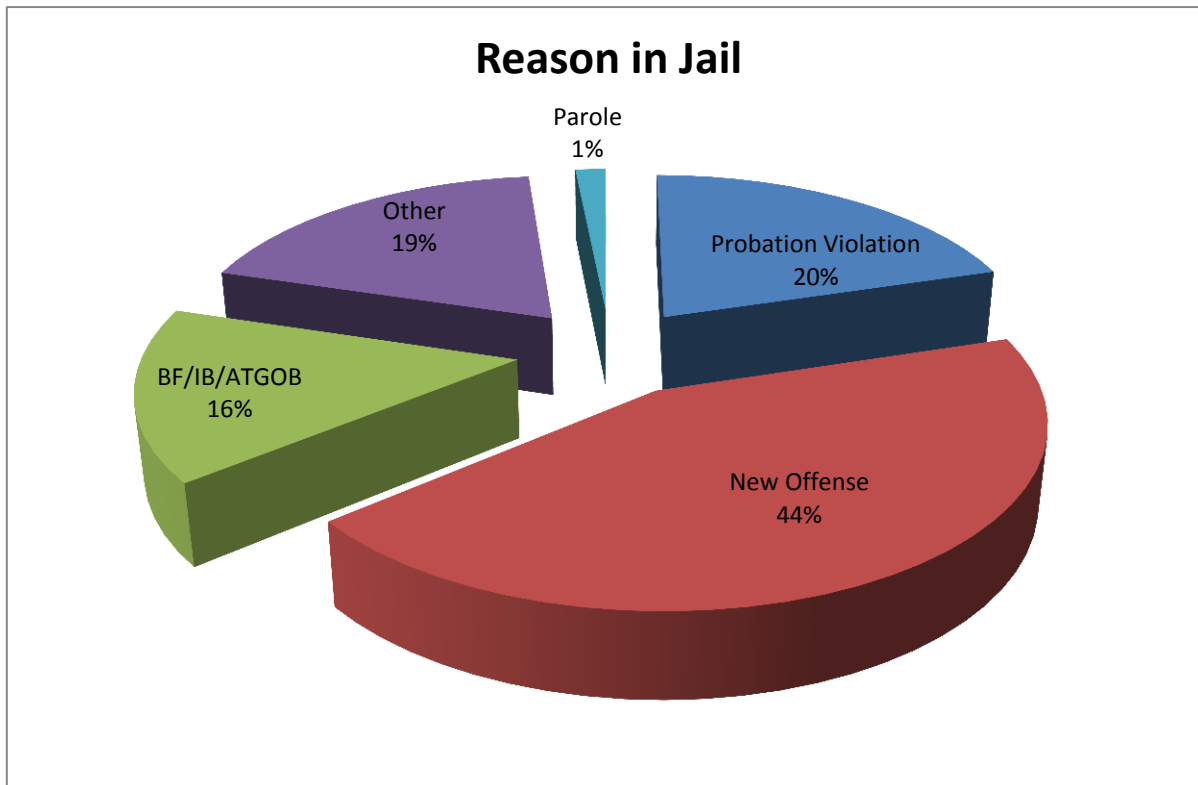
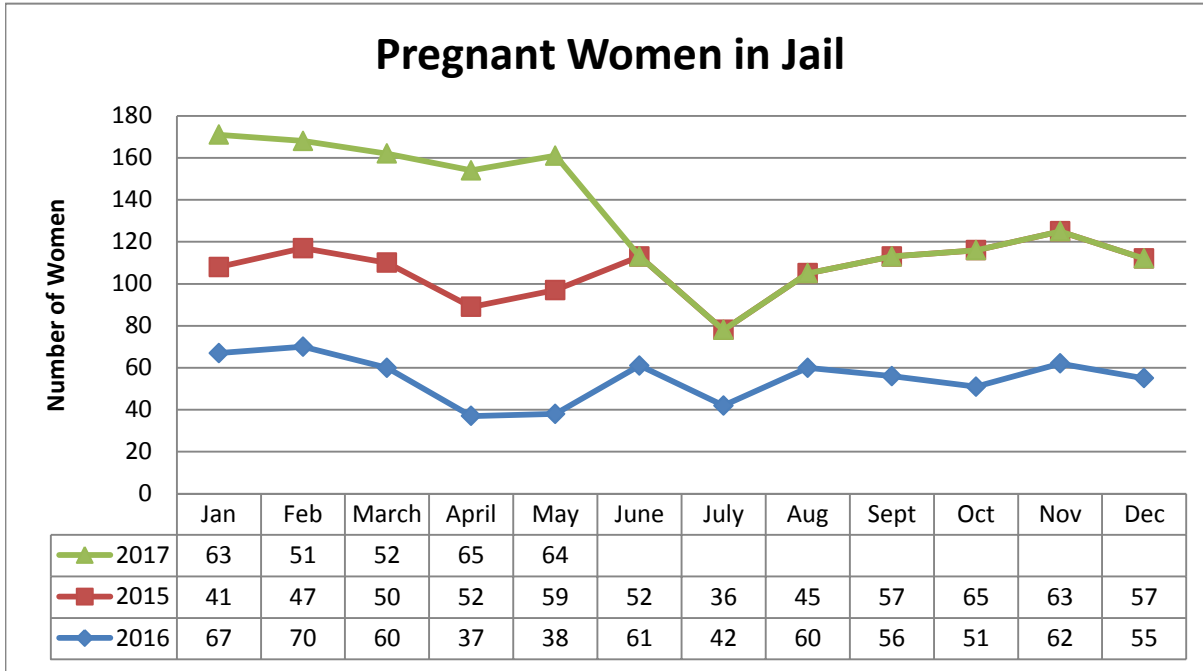
**Transicare Reporting
Crisis Services Project**

	2016-10	2016-11	2016-12	2017-01	2017-02	2017-03	2017-04
Beginning Census	115	115	107	103	98	123	127
REFERRALS	46	33	32	23	42	56	79
Admissions							
Referred Admitted	19	18	16	8	26	28	30
No Admit Client Refusal	2	1	1	2	0	1	2
No Admit Criteria	1	1	3	0	1	0	1
No Admit Structural	2	6	2	2	2	3	5
Pending	22	7	10	11	13	24	41
<i>PRIOR PENDING</i>							
Pending Admitted	12	17	2	4	8	11	17
No Admit Client Refusal	3	3	4	1	0	0	0
No Admit Criteria	2	1	1	1	0	0	0
No Admit Structural	0	4	3	4	1	1	4
Total Admissions	31	35	18	12	34	39	47
Discharges							
Success Transfer	7	3	4	3	2	4	5
DC Midterm Disengage	12	16	6	2	4	4	4
DC Rapid Disengage	6	6	2	4	2	14	5
DC Structural	6	18	10	9	1	13	20
Total Discharged	31	43	22	18	9	35	34
Active End Of Month	115	107	103	97	123	127	140
Outcome Data							
<i>Terrell State Hospital Linkages</i>							
≤7 Connect To Prescriber	1	6	2	1	4	6	2
≤30 Connect To Prescriber	0	1	0	0	0	0	0
Missed Metric	1	3	0	1	3	3	0
Total Released	2	10	2	2	7	9	2
Cummulative ≤7 Connect %	50.0%	58.3%	64.3%	62.5%	60.9%	62.5%	64.7%
Cummulative ≤30 Connect %	50.0%	66.7%	71.4%	68.8%	65.2%	65.6%	67.6%
Missed Metric	50.0%	33.3%	28.6%	31.3%	34.8%	34.4%	32.4%
<i>Unduplicated Served</i>							
Monthly Unduplicated	141	141	124	111	119	155	156
DSRIP YTD Unduplicated Served	141	180	209	227	259	308	352
<i>Encounter Data</i>							
F2F Encounter	848	840	730	756	799	856	1018
Care Coord	198	138	113	82	30	117	119
Total	1046	978	843	759	829	759	1137

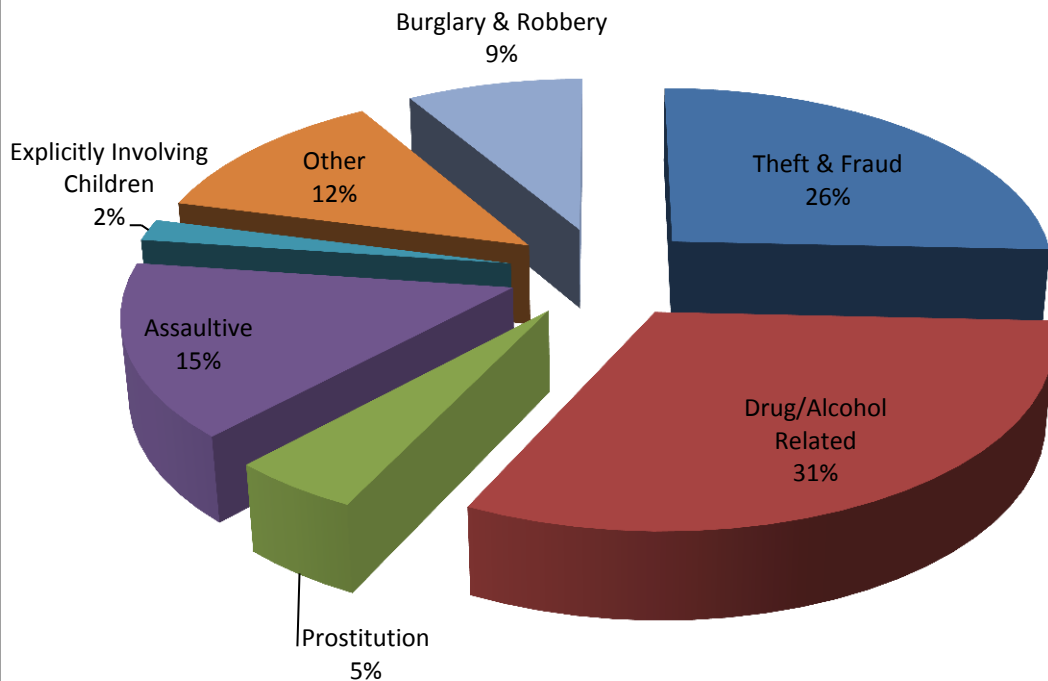
Pregnant Patients
May 2017

2017
64
1,049

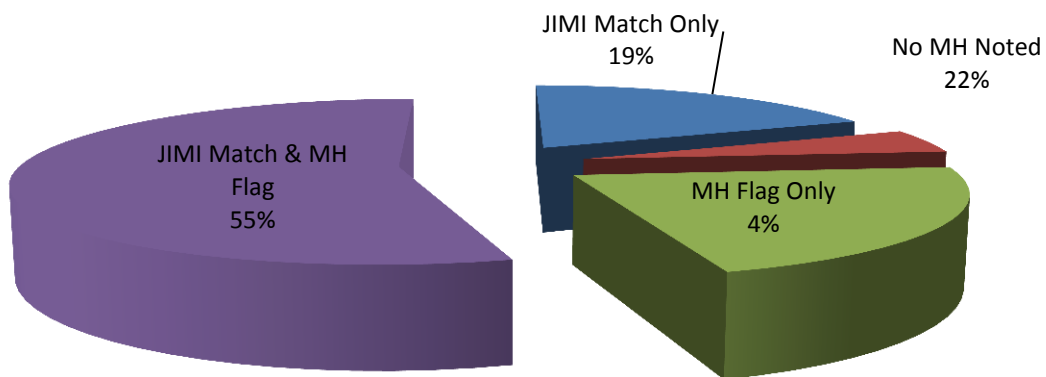
Unique Individuals
Days In Jail



Offense Type



Mental Health Concerns



	May 2014	May 2015	May 2016	May 2017
In Jail (atleast one day in month-not total at end of the month)	63	59	38	64
Probation Violations	16	9	7	13
New offenses	36	47	25	28
BF/IB/ATGOB only			5	10
Parole Violations only	2	1	-	1
Other reason in jail	9	2	1	12
Released Since Last Month	30	40	14	33
Released to SAFPF	1	1	-	2
Released to Nexus Recovery	1	7	6	3
Released to state hospital	-	2	-	-
Released to other treatment	-	1	-	1
Released to TDCJ (ID or SJ)	5	-	1	-
Released on Probation	3	9	1	5
Released on bond	6	6	1	5
Released to Other Agencies	3	4	1	5
Released for other Reasons	11	10	4	12
New Cases Since Last in Month	25	25	12	36

Emails To Court Coordinators for settings	2	3	1	3
Email Notifications to Probation	5	2	-	5
Email Notifications to TDCJ desk (Sgt. Temple)	1	-	1	3
Pregnant Patient Interviews for Referral Purposes	-	-	-	-
Nexus Notifications		-	-	-

2017

Unique Individuals

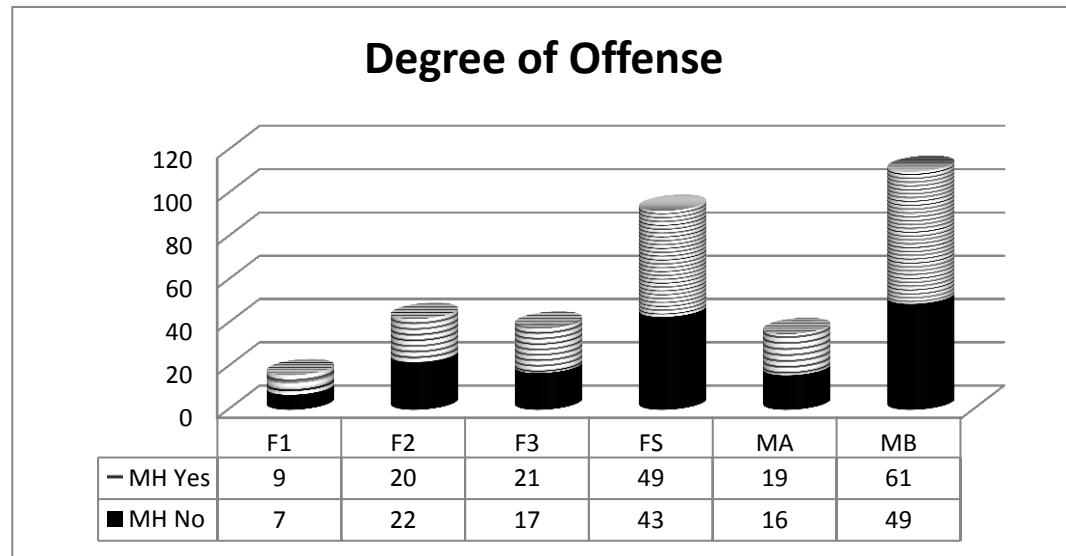
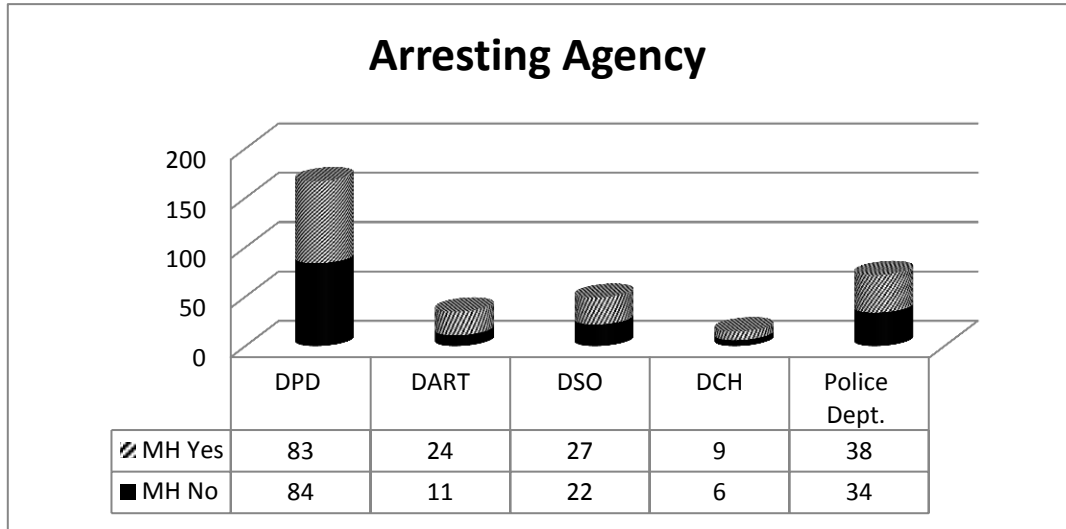
330

Days In Jail

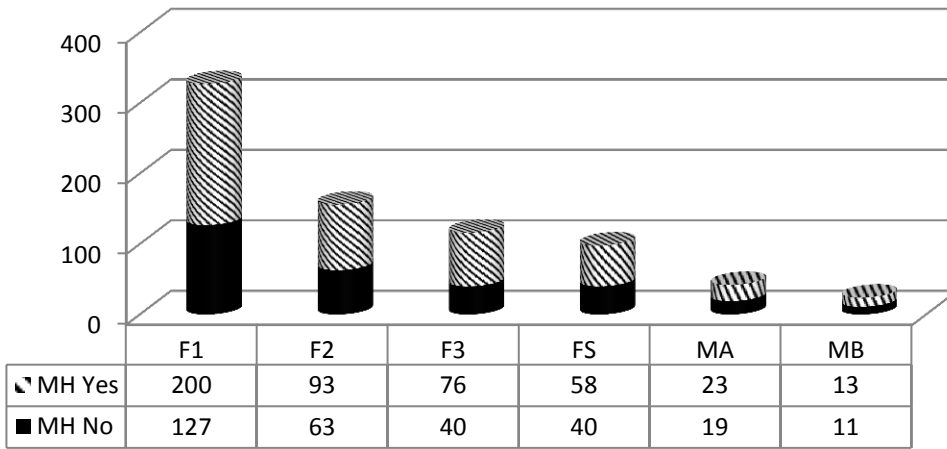
14,944

Average Number of Days in Jail

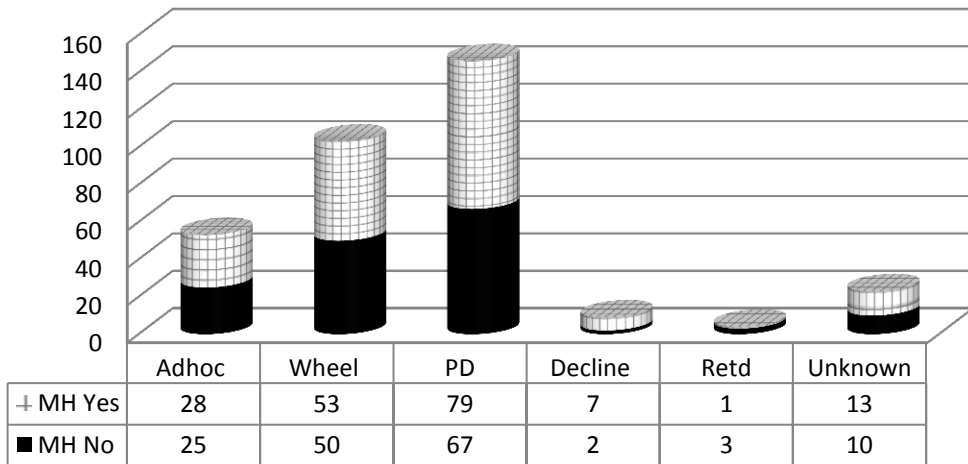
44.21



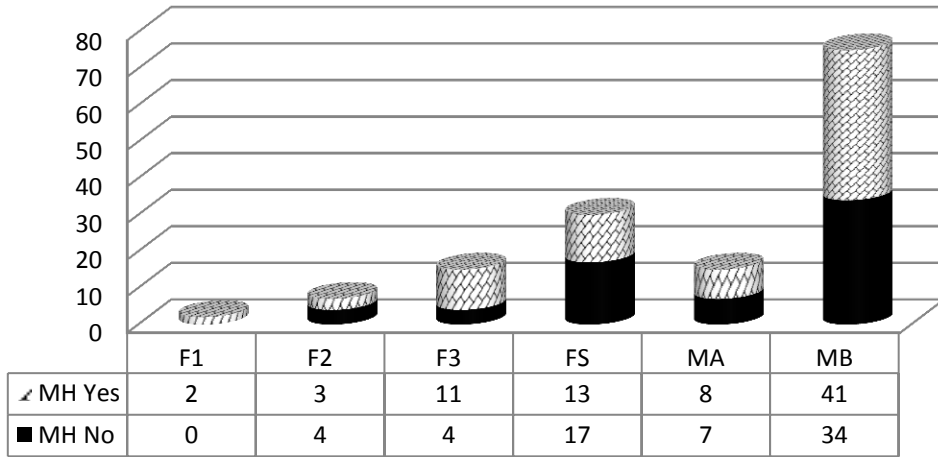
Avg. Days in Jail



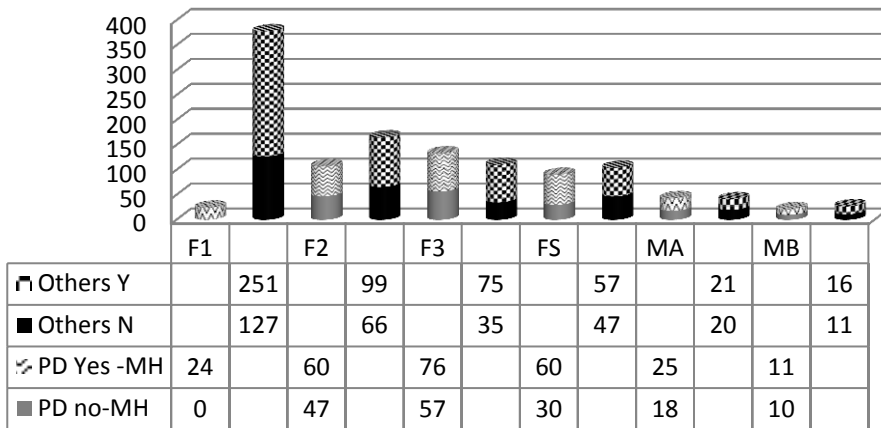
Attorney Type



PD Degree of Offense



Avg. Days in Jail Attorney Type



Monthly NorthSTAR/TLETS Intakes

Month-Year	Total inmates booked into the jail with a NorthStar/TLETS match	Book in Totals for the month	% of people with a NorthStar match booked into the jail
2007 Total	6501	93413	7%
2008 Total	8200	99580	8%
2009 Total	10636	98407	11%
2010 Total	12994	96245	14%
2011 Total	15810	90429	17%
2012 Total	17036	83524	20%
2013 Total	17762	81010	22%
2014 Total	16919	73168	23%
2015 Total	16998	69185	25%
Jan-16	1444	5836	25%
Feb-16	1594	6081	26%
Mar-16	1457	5782	25%
Apr-16	1526	6031	25%
May-16	1461	6028	24%
Jun-16	1523	5913	26%
Jul-16	1266	4891	26%
Aug-16	1487	5884	25%
Sep-16	1433	5534	26%
Oct-16	1294	5201	25%
Nov-16	1299	5100	25%
Dec-16	1188	4818	25%
2016 Total	16972	67099	25%
Jan-17	2460	5585	44%
Feb-17	3836	5442	70%
Mar-17	3727	5903	63%
Apr-17	3481	5533	63%
2017 Total	13504	22463	60%

***As of January 2017, the TLETS feed was included in the MH match data to the BOT impacting the overall percentage.**

Multi-Bookin NorthSTAR Tracking

2017	# Times Booked In	# Unique Clients
	Bookins 7	1
	Bookins 6	3
	Bookins 5	11
	Bookins 4	33
	Bookins 3	162
	Bookins 2	1024
	Bookins 1	12031
Total		13265
As of 5/09/17		

Monthly NorthSTAR/TLETS Intakes

Month-Year	Total inmates booked into the jail with a NorthStar/TLETS match	Book in Totals for the month	% of people with a NorthStar match booked into the jail
2007 Total	6501	93413	7%
2008 Total	8200	99580	8%
2009 Total	10636	98407	11%
2010 Total	12994	96245	14%
2011 Total	15810	90429	17%
2012 Total	17036	83524	20%
2013 Total	17762	81010	22%
2014 Total	16919	73168	23%
2015 Total	16998	69185	25%
Jan-16	1444	5836	25%
Feb-16	1594	6081	26%
Mar-16	1457	5782	25%
Apr-16	1526	6031	25%
May-16	1461	6028	24%
Jun-16	1523	5913	26%
Jul-16	1266	4891	26%
Aug-16	1487	5884	25%
Sep-16	1433	5534	26%
Oct-16	1294	5201	25%
Nov-16	1299	5100	25%
Dec-16	1188	4818	25%
2016 Total	16972	67099	25%
Jan-17	2460	5585	44%
Feb-17	3836	5442	70%
Mar-17	3727	5903	63%
Apr-17	3481	5533	63%
May-17	3619	5896	61%
2017 Total	17123	28359	60%

*As of January 2017, the TLETS feed was included in the MH match data to the BOT impacting the overall percentage.

Multi-Bookin NorthSTAR Tracking

2017	# Times Booked In	# Unique Clients
	Bookins 8	1
	Bookins 7	2
	Bookins 6	6
	Bookins 5	24
	Bookins 4	52
	Bookins 3	258
	Bookins 2	1581
	Bookins 1	14446
Total		16370
As of 6/13/17		

HARRY INGRAM		FY2017 ATLAS STATISTICS											203/HAWTHORNE				
MONTH	BEGINNING # OF PENDING CASES	+NEW CASES RECEIVED THIS MONTH	=TOTAL CASES	TBJ	TBC	PLEAS	REV	GRADUATES	PROBATION MODIFICATIONS	DISMISSALS	OTHERS	TOTAL DISPOSITIONS	ENDING # PENDING CASES **	CURRENT ATLAS PARTICIPANTS	CURRENT PARTICIPANTS IN CUSTODY	FORMER ATLAS PARTICIPANTS	BOND
May	15	6	21	0	0	0	0	6	0	0	0	6	15	15	0	0	15

HARRY INGRAM		FY2017 MISDEMEANOR MENTAL HEALTH COURT STATS										CCCAP1/WADE		
MONTH	BEGINNING # OF PENDING CASES	Rediverts	+NEW CASES RECEIVED THIS MONTH	=TOTAL CASES	TBJ	TBC	PLEAS	DISMISSAL	OTHER	TOTAL DISPOSITIONS	ENDING # PENDING CASES **	CURRENT PARTICIPANTS	NUMBER OF GRADUATES	BOND***
May	123	0	7	130	0	0	7	0	5	12	118	30	0	29

HARRY INGRAM		FY2017 S.E.T. STATISTICS											291st				
MONTH	BEGINNING # OF PENDING CASES	+NEW CASES RECEIVED THIS MONTH	=TOTAL CASES	TBJ	TBC	PLEAS	REV	GRADUATES	PROBATION MODIFICATIONS	DISMISSALS	OTHERS	TOTAL DISPOSITIONS	ENDING # PENDING CASES **	CURRENT PARTICIPANTS	CURRENT PARTICIPANTS IN CUSTODY	FORMER PARTICIPANTS	BOND
May	43	2	45	0	0	0	0	0	0	0	0	0	45	22	0	0	22

May		FY2017 MHPD STATS										
MONTH	BEGINNING # OF PENDING CASES	+NEW CASES RECEIVED THIS MONTH	=TOTAL CASES	TRIALS	PLEAS	COND. DISM.	REVO-CATION	DISMISSALS	INCOMPETENT	REFERRALS	OTHER COUNSEL APPT.	TOTAL CLOSED
R. LENOX	131	18	149	0	0	2	0	1	0	0	1	4
L. TAYLOR	160	13	173	0	2	4	0	1	0	0	0	7

MALCOM HARDEN		FY2017 FELONY COMPETENCY STATISTICS														
	BEGINNING # OF CASES	NEW CASES THIS MONTH	TBJ	TBC	Alt. Trial Dispos.	PLEAS	REVO-CATIONS	DISMISSALS	PROBATION	COMP. HRG.	EXTENSIONS	CIVIL COMMIT.	MHMR REFERRAL	CONSULTS	OTHER	ENDING # OF PEOPLE IN OCR
May	165	16	0	0	0	6	2	3	0	6	2	0	0	0	7	19

MALCOM HARDEN		FY2017 MISDEMEANOR COMPETENCY STATISTICS														
MONTH	BEGINNING # OF CASES	NEW CASES THIS MONTH	TBJ	TBC	Alt. Trial Dispos.	PLEAS	REVO-CATIONS	DISMISSALS	PROBATION	COMP. HRG.	EXTENSIONS	CIVIL COMMIT.	MHMR REFERRAL	CONSULTS	OTHER	ENDING # OF PEOPLE IN OCR
May	92	46	0	0	0	5	0	32	0	19	14	0	0	0	9	23

May		MI Court																
MONTH	TOTAL NEW CASES RECEIVED	NEW CLIENTS AT GREEN OAKS	NEW CLIENTS AT MEDICAL CENTER MCKINNEY	NEW CLIENTS AT PARKLAND	NEW CLIENTS AT DALLAS BEHAVIORAL HEALTH	NEW CLIENTS AT GARL AND BEHAVIORAL	NEW CLIENTS AT ZALE LIPSHY	NEW CLIENTS AT SUNDANCE BEHAVIORAL HEALTHCARE	NEW CLIENTS AT HICKORY TRAILS	NEW CLIENTS AT METHO DIST RICHARDSON	NEW CLIENTS AT DALLAS PRESBYTERIAN	NEW CLIENTS AT VA	NEW CLIENTS AT WELLB RIDGE	NEW CLIENTS AT TIMBER LAWN	PROBABLE CAUSE HEARINGS HELD	NO CONTEST COMMIT	CONTESTED COMMIT	FORCED MEDS HEARING IN COURT
L. ROBERTS	217	61	13	11	17	17	6	51	11	1	1	0	0	28	4	1	4	4
L. TAYLOR	77	0	0	22	20	2	9	5	18	0	0	0	1	0	3	0	1	1

RANDA BLACK		MI COURT						
MONTH	NEW CLIENTS	PROBABLE CAUSE HEARINGS HELD	NO CONTEST COMMIT TO TSH	CONTESTED COMMIT TO TSH	RECOMMENDMENTS	MEDICATION HEARINGS	OUTPATIENT	JURY TRIAL
May	29	1	3	8	3	15	1	0

*Number of new cases decreased due to increase in 46B cases.

The Bridge	2016	2016	2016	2016	2016	2016	2016	2016	2016	2017	2017	2017	2017	2017	
	May	June	July	August	Sept.	Oct.	Nov.	Dec.	Jan.	Feb.	Mar.	April	May	AVG.	
Bridge Night Shelter	419	447	483	485	453	451	433	433	451	410	427	426	445	443	
Off-site Night Shelter Coordination	537	698	659	683	626	536	489	525	545	527	489	485	472	559	
Care Coordination	1114	1203	1185	1214	890	728	715	936	1061	933	980	875	1009	988	
Peer Support Services						116	141	213	308	402	335	358	488	295	
Job Placements	39	42	42	45	31	43	14	22	29	17	32	20	33	31	
Housing Placements	36	35	45	45	35	32	28	17	28	30	21	20	19	30	
Metrocare Mental Health Serv.	349	354	378	377	367	388	338	347	377	246	373	331	343	351	
Metrocare Chemical Dep. Serv.	34	19	29	29	27	23	21	28	14	19	16	13	18	22	
Parkland Clinic*	852	915	782	750	868	798	692	618	702	676	676	638	464	725	
VA Services	7	18	10	13	22	18	15	13	20	7	1	11	17	13	
Judicial Re-Entry	2	1	2	5	5	5	3	2	6	6	4	3	5	4	
Jail Release (General)	20	12	13	21	23	12	11	17	16	20	16	28	31	18	

Each category represents *unduplicated guests* , not totals served.

*exception - Parkland Clinic number is for total visits.

NAME OF MHMR PROGRAM: Metrocare Services
PROGRAM: SNOP

MONTH OF REPORT:4_2017

DATE SUBMITTED: 5_2017

	ATLAS	Post-DDRTC	STAC	Misd.	PRIDE	DDRTC	PROBATION ICM	PAROLE ICM
1. Number of Offenders served at the beginning of the month:	10	52	22	30	0	38	41	77
2. Number of Referrals received:	1	5	2	7	0	10	5	159
3. Number of Assessments:	1	5	2	7	0	14	5	43
4. Number of Admissions:	1	5	2	7	0	14	5	15
5. Average length of stay by months:	2.06	2.06	2.84	1.59	n/a	n/a	5.3	8.75
5. a. Average hours served:	9.12	4.72	3.6	4.5	n/a	n/a	3.57	5
6. Services Utilized:	0	0	0	0	0	3	0	0
6. a. Visits to ER (medical)	0	0	0	0	0	0	0	0
6. b. 23-hour Observation (psych)	0	0	0	0	0	3	2	0
6. c. Inpatient Stay (med/psych)	0	0	0	0	0	0	0	0
6. d. Jail days less than 30 days:	0	0	0	0	0	0	0	0
7. Number of Discharges:	0	11	2	3	0	11	1	4
7. a. Terminations (jail more than 30days)	0	6	2	0	0	0	0	1
7. b. Warrants/Suspension: (medical d.c.; abscond)	0	0	0	2	0	5	0	2
7. c. Graduates	0	5	0	1	0	6	0	1
8. Number of Offenders served at the end of month:	11	46	22	34	0	41	45	88
9. Number of Offenders on the waiting list:	0	0	0	0	0	2	0	0
10. Minimum/Maximum Census per FTE allocation	20-25	30-38	30-38	30-38	10-12	60	100-125	100-125
11. % of FTE Assigned	1	1.5	1.5	1.5	0.5		5	5
12. Vacancy(s)	0	0	0	0	0	2	2	1

Each FTE covers 20-25

NAME OF MHMR PROGRAM: Metrocare Services
PROGRAM: SNOP

MONTH OF REPORT:5_2017

DATE SUBMITTED: 6_2017

	ATLAS	Post-DDRTC	STAC	Misd.	PRIDE	DDRTC	PROBATION ICM	PAROLE ICM
1. Number of Offenders served at the beginning of the month:	34	46	22	34	0	41	45	88
2. Number of Referrals received:	3	4	4	3	7	20	6	181
3. Number of Assessments:	3	4	4	3	7	13	6	51
4. Number of Admissions:	3	4	4	3	7	13	6	21
5. Average length of stay by months:	1.55	2.35	2.44	2.05	n/a	n/a	4.69	7.02
5. a. Average hours served:	6.75	5.58	4.68	6.23	n/a	n/a	5.56	4.69
6. Services Utilized:	0	0	0	0	0	2	0	0
6. a. Visits to ER (medical)	0	0	0	0	0	0	0	0
6. b. 23-hour Observation (psych)	0	0	0	0	0	2	0	0
6. c. Inpatient Stay (med/psych)	0	0	0	0	0	0	0	0
6. d. Jail days less than 30 days:	0	0	0	0	0	0	4	1
7. Number of Discharges:	8	3	8	8	4	14	5	4
7. a. Terminations (jail more than 30days)	7	2	1	7	0	0	1	2
7. b. Warrants/Suspension: (medical d.c.; abscond)	1	1	1	1	4	4	2	1
7. c. Graduates	0	0	6	0	0	10	1	2
8. Number of Offenders served at the end of month:	29	47	18	29	3	40	46	105
9. Number of Offenders on the waiting list:	0	0	0	0	0	11	0	0
10. Minimum/Maximum Census per FTE allocation	20-25	30-38	30-38	30-38	10-12	60	100-125	100-125
11. % of FTE Assigned	1	1.5	1.5	1.5	0.5		5	5
12. Vacancy(s)	0	0	0	0	0	2	2	1

Each FTE covers 20-25

Outpatient Competency Restoration Monthly Totals														
	Jan	Feb	Mar	April	May	June	July	Aug	Sept	Oct	Nov	Dec	Total	2016 Total
Beginning of Month	41	40	40	37	41	44	44	0	0	0	0	0		
Misdemeanor	11	16	16	18	20	22								
Placed in OCR	9	4	7	4	8								32	65
Homeless @ admit	5	3	3	2	5								18	37
Dispo	4	4	5	2	6								21	76
Outpatient to Inpatient	2	2	3	0	3								10	20
Abscond	1	0	1	2	0								4	12
Restored and Resolved	0	2	1	0	3								6	33
Not restored -- Dismissed	1	0	0	0	0								1	11
Felony	30	24	24	19	21	22								
Placed in OCR	5	3	1	4	3								16	52
Homeless @ admit	2	0	0	1	1								4	28
Dispo	11	3	6	2	2								24	42
Outpatient to Inpatient	2	0	2	0	0								4	20
Abscond	4	1	1	1	1								8	11
Restored	4	0	2	1	0								7	7
Not restored -- Dismissed	1	2	1	0	1								5	4
End of Month	40	40	37	41	44	44	0	0	0	0	0	0	246	

FY2017	Start of Month	New admissions	DAOpt-out	Unsuccessful discharge	Graduates	End of Month
Sept. 16	151	6	0	2	7	148
Oct. 16	148	5	0	6	7	140
Nov. 16	140	12	0	6	0	146
Dec. 16	146	13	0	1	6	152
Jan. 17	152	6	2	3	6	147
Feb. 17	147	6	0	6	3	144
Mar. 17	144	9	0	4	13	136
Apr. 17	136	9	1	0	10	134
May. 17	134	14	1	5	7	135
Jun. 17						
Jul. 17						
Aug. 17						
total		80	4	33	59	

FY15*	Start of Month	New admissions	DA Opt-out	Unsuccessful discharge	Graduates	End of Month
Total		29		22	9	
Ave. Per Month		2.41666667		1.83333333	0.75	

FY17	Start of Month	New admissions	DA Opt-out	Unsuccessful discharge	Graduates	End of Month
Sept. 16	28	0	0	2	0	26
Oct. 16	26	4	0	1	0	29
Nov. 16	29	1	0	1	0	29
Dec. 16	29	1	0	2	0	28
Jan. 17	28	6	0	1	3	30
Feb. 17	20	2	0	1	0	21
Mar. 17	21	1	0	0	3	19
Apr. 17	19	1	0	0	0	20
May-17	20	5	0	1	5	19
Jun. 17						
Jul. 17						
Aug. 17						

* Denotes that numbers are slightly lower due to missing data.

FY15*	Start of Month	New admissions	DA Opt-out	Unsuccessful discharge	Graduates	End of Month
Total		44		16	20	
Ave. Per Month		3.66666667		1.33333333	1.66666667	

FY17	Start of Month	New admissions	DA Opt-out	Unsuccessful discharge	Graduates	End of Month
Sept. 16	43	10	0	4	0	49
Oct. 16	49	8	0	2	4	51
Nov. 16	51	4	0	5	0	50
Dec. 16	50	5	0	0	0	55
Jan. 17	55	9	0	0	7	57
Feb. 17	31	8	0	5	0	34
Mar. 17	34	9	0	3	0	40
Apr. 17	40	6	0	4	7	35
May-17	35	6	0	0	0	41
Jun. 17						
Jul. 17						
Aug. 17						

* Denotes that numbers are slightly lower due to missing data.

FY15	Start of Month	New admissions	DA Opt-out	Unsuccessful discharge	Graduates	End of Month
Total		81		43	64	
Ave. Per Month		6.75		3.58333333	5.33333333	

FY17	Start of Month	New admissions	DA Opt-out	Unsuccessful discharge	Graduates	End of Month
Sept. 16	63	11	0	2	2	70
Oct. 16	70	7	0	0	7	70
Nov. 16	70	5	0	1	0	74
Dec. 16	74	1	0	1	3	71
Jan. 17	71	8	0	2	1	76
Feb. 17	36	8	0	9	3	32
Mar. 17	32	8	0	3	4	33
Apr. 17	33	5	0	7	3	28
May-17	28	4	0	2	2	28
Jun. 17						
Jul. 17						
Aug. 17						

FY17	Start of Month	New Admissions	Unsuccessful discharges*	Graduates	End of Month
Sep. 16	141	17	5	16	137
Oct. 16	137	15	3	0	149
Nov. 16	149	21	2	15	144
Dec. 16	144	11	1	0	152
Jan. 17	152	13	7	0	153
Feb. 17	153	18	6	23	169
Mar. 17	169	14	12	0	157
Apr. 17	157	14	11	0	158
May. 17	158	16	9	28	142
Jun. 17					
Jul. 17					
Aug. 17					

FY17	MH Current	MH admissions	MH discharges	Graduates	End of Month
Sep. 16	34	4	3	3	32
Oct. 16	37	5	1	0	41
Nov. 16	35	3	4	1	33
Dec. 16	33	2	3	0	32
Jan. 17	32	2	1	0	35
Feb. 17	35	3	2	6	29
Mar. 17	29	6	1	0	34
Apr. 17	34	5	0	0	39
May. 17	39	6	5	6	32
Jun. 17					
Jul. 17					
Aug. 17					

*Unsuccessful discharges are those who absconded or were sent to their COJ for further treatment.

* FY15	Start of Month	New admissions	DA Opt-out	Unsuccessful discharge	Graduates	End of Month
Total		12		8	9	
Ave. Per Month		1		0.66666667	0.75	

FY17	Start of Month	New admissions	DA Opt-out	Unsuccessful discharge	Graduates	End of Month
Sept. 16	14	3	0	0	0	17
Oct. 16	17	0	0	0	4	13
Nov. 16	13	4	0	1	0	16
Dec. 16	16	1	0	0	0	17
Jan. 17	17	0	0	1	0	16
Feb. 17	15	1	0	3	1	12
Mar. 17	12	0	0	0	0	12
Apr. 17	12	0	0	2	0	10
May-17	10	1	0	0	0	11
Jun. 17						
Jul. 17						
Aug. 17						

* Denotes slightly lower numbers due to incomplete data.