



DALLAS COUNTY
Criminal Justice Department

Behavioral Health Steering Committee

Thursday, October 19, 2017

Agenda

1. Welcome and Call to Order *Lynn Richardson*
2. Review and approval of minutes from August 2017
3. Caruth Smart Justice Grant Update (*Mike Laughlin/MMHPI*)
4. SAMHSA Update *Laura Edmonds*
5. 530 Sub Committee* *Laura Edmonds*
6. BHLT & CSP Update *Charlene Randolph/Adapt*
7. Jail Reports
 - Hospital Movement* *Janine Capetillo*
 - Pregnant Patients *Shenna Oriabure*
 - Veterans Reports *Shenna Oriabure*
 - Homeless Report *Shenna Oriabure*
 - Northstar Matches *Mike Laughlin*
8. Public Defenders Report *Lynn Richardson*
9. District Attorney's Report *Lee Pierson*
10. Provider Reports
 - The Bridge *Kelly Kane*
 - Metrocare *Crystal Garland*
 - IPS Reports *Enrique Morris*
11. Problem Solving Courts
 - Outpatient Competency *Janine Capetillo*
 - DIVERT *Keta Dickerson*
12. Specialty Courts CSCD *Serena McNair*
13. Announcements
14. Adjourn

***Action and Discussion Items**



DALLAS COUNTY, TEXAS

Minutes of the Behavioral Health Steering Committee (BHSC) Meeting Thursday, August 17, 2017

Call to order and Introductions

The meeting was called to order by Judge Wade at 8:38 am. 25 staff and agency representatives/providers were in attendance with names recorded on the meeting sign-in sheet.

Minutes review and approval

The **minutes** from the last bi-monthly BHSC meeting held on June 15, 2017 (packet pgs. 2-5), were reviewed with motion and second by Lee Pierson and Harry Ingram for acceptance. No discussion or corrections. Motion unanimously passed with minutes approved without objection.

No guest speakers presented on this occasion.

Caruth Grant: Mike Laughlin provided a July 2017 quarterly summary update regarding the MMHPI Smart Justice Grant with materials in the packet (packet pages 6-8). The 5-year, \$7 million Implementation Grant submitted by MMHPI was awarded in October 2016, leading to the \$1.174 million sub-grant to Dallas Co. in Jan. 2017 to address Intercepts 2-4, and part of 5. Mike gave an update on the current status and upcoming actions related to the award. The beta test of the project began on April 17th, and all the workgroups and sub-teams for the Intercepts 2-4 continue to meet/complete pre-implementation tasks related to procedures/forms, Court orders, space/staff preparations, modified resource allocations, training curriculums/plans culminating in this week's successful implementation launch. Mike also provided program activity/performance data through June 30th in a supplemental handout highlighting 2,456 were screened positive, 484 ordered for assessment, 297 assessed, 90 presented to the Magistrate Court (60% felony), 77 granted release (5 denied/9 contested), and all 77 opened by Pretrial (13 to low level, 46 med. Level and to 18 high level bond supervision).

Lynn brought up the MH screen cue is needing to capture more people, and asked about what we do with cases whose MH assessment leads to "no" or "diagnosed deferred". Lengthy discussion on this, and it was explained that this is "point in time evaluation and diagnosis that is based on history and symptoms presented at that time. It was agreed that ADAPT will set up a training session for everyone on what this means and how to use it.

Additionally, MMHPI continues to meet and work with community providers to build up treatment resources related to Intercept 5 for referral and treatment connection upon release. Marlene reported the contracts have been routed/signed on her end, but no referrals yet. She also reports that the receiving of warm handoffs is going well, though it was a little bumpy at the beginning. MMHPI is coordinating with the City and others on Intercept 1 (police and EMT response options) with the first agreements with them are going for approval before the full City Council this month. They have established job descriptions, and are currently hiring staff for the emergency response RIGHT Care Teams.

Data and Reports for BHSC – Judge Wade

Program and Department Updates: The program/outcome data, updates, and workload reports were presented and accepted via relevant dept./agency staff for the SAMHSA Grant, 530 Subcommittee, BHLT/CSP, Public Defenders, District Attorneys, CJ Dept. Jail reports, as well as provider reports (The Bridge, Metrocare, and IPS), and the various Problem Solving and Specialty Courts (see packet pgs. 9-63 for details).

Laura presented the SAMHSA Grant update along with the data and activities (see packet pg. 9).

Laura Edmonds also presented a summary of current 530 Subcommittee activities and expenses. The semi-monthly June 19th Committee meeting minutes and report were presented by Laura who also advised that there was some very good planning accomplished, and that there will be some new team members joining. Additionally, the 530 Subcommittee needs approval for \$2720 expenditure from budget line items for inpatient treatment at Homeward Bound for individuals currently in need of an additional funding source beyond what is currently available. Motion made and seconded by Harry Ingram/Lee Pierson. Motion unanimously passed and approved without discussion or objection.

Laura also advised there will be an increase in training opportunities and focus for FY 2018 to include the National Assoc. of Drug Court Professionals Conference coming to Texas.

The 530 Subcommittee will also have their next lunchtime training Delightful Discussions on services at IPS on August 18th, in the Pretrial Conference Room.

CSP stats and metrics for June/July were presented/reviewed by Charlene (see packet pgs. 9-25), and they are exceeding YTD outcomes and DY6 metrics. There continues to be an uptick in the numbers due to the new Caruth MH PR Bonds. Terrell Hospital Connection Project for improved release planning continues to go well.

Charlene and CSP providers continue to communicate with NTHBA to facilitate the recent transition planning since the care manager and Specialty Court Aftercare Engagement Packages currently go through CSP and will now be coordinated through NTBHA. Process continues to go well. HHSC has submitted request for 21 month extension of CSP funding with an announcement on that by the end of the current calendar year. The Forensic Diversion Unit had 46 unique clients engaged, with some of those while still in custody.

Cottages Update: 26 unique consumers engaged by Dallas Metrocare. Census is not full at this time. Referral criteria include multi-bookins, MI diagnosis, and homeless. Also they are permitted to have income, but don't have to meet HUD definition, no sex offender cases, and Arson cases are reviewed individually. Lynn asked how long it takes, and Shenna explained that DHA processing can take some time in order to process the needed documents, verify homeless status, etc. City Square case workers will interview/screen and help to gather documents, etc.

Jail and hospital movement, pregnant defendants, and homeless and Veteran data and reports were presented by Laura Edmonds, Shenna Oriabure, and Janine Capetillo and are found in the meeting packet on pages 33-48. With the pregnant patients it was noted that some of these are for probation/parole violations, and most of them have an MI diagnosis per the Stella data and MH screenings. Veteran's prevalence continues to under report, and it was also noted that the Veterans continue to rapidly cycle out of the jail making it hard to get the designated staff catching them before release due to limited staffing. No other concerns or questions from the group on those items. Montgomery Hospital has begun to take clients again, but Lynn also noted that they continue to be very selective excluding those unlikely to regain, lower level cases, and to heavily scrutinize criminal records.

Monthly CCQ match: Mike Laughlin provided the MH prevalence which according to TLETS is still high 61% (packet pgs. 51-52). Several acknowledged that the Jail MH screen was still too inclusive, and that data sources are being reviewed with IT to refine the data feeds and hopefully resolve the issue soon. The NTBHA feed will also soon be added to the data collection process which should help in more accurate triaging and identification.

All other department and agency data reports and program updates were accepted as read, and can be reviewed in the meeting packet.

Lynn Richardson presented the **Public Defender** MH case data and reports (page 34 of packet) noting they will soon have the Smart Justice numbers added also. They are now also closely tracking all specialty court participants. No other comments at this time.

Lee Pierson provided the **DA data updates and report (see supplemental packet insert)** and advised that DA has reviewed the cases for Depression diagnosis, and is now taking them again. Cases with violence elements are also being carefully scrutinized.

Provider Reports

Kelly Lane from The Bridge reported their numbers (pg. 35) with no comments/concerns expressed. She advised Jay Dunn is no longer at the Bridge, and Dr. David Woody is interim CEO. She also advised that DHA is taking briefings again for placements for the first time since November 2016.

IPS: Supplemental insert was provided by IPS with no further comments.

NTBHA: John Henry reported that engagements are up, and some good things are happening with the expansion to include increased capacity for OCR and new money/collaboration to implement SB2 Collaborative locally.

Metrocare: Crystal Garland presented Metrocare data/reports (pg. 55) advising that Atlas numbers remain low but is being addressed. DDRC remains at full capacity.

Specialty Court: Janine presented OCR Court data (pg. 57). It was noted that Governor's Office is no longer funding attorneys for Specialty Courts. DIVERT Court numbers are on (pg. 58). Rosa Sandles was present for Ms. McNair at which time the other Specialty Court numbers (pages 59-63) were presented noting that Atlas Court numbers are down, and that Judge Hawthorne was working to resolve the issue.

Funding: Everyone is encouraged to keep good track of program/outcome numbers to ensure they are accurate and that your target population makes up most of your slots and program effort. Judge Wade asked at the June meeting for all to consider setting up a separate BHSC focus meeting in near future to improve data/outcome tracking efforts and look at a periodic reporting that maybe can go before the Commissioners Court to show impact.

Announcements

Housing recent targeted housing training for attorneys went very well, and the next one for the bigger group will be in the Central Jury Room on August 25, 2017 from 11-230pm. Several commented that Metrocare has been a big help in identifying and processing candidates, and getting the latest funding spent on more people. Enrique commented that this will also help us justify future funding requests.

Shenna and Laura announced the next monthly "Delightful Discussions" brown bag in-service with information and guidance on IPS is on the August 18, 2017, from 1130-1215pm. It will be held in the in Pretrial Conference Rm. A9 on

the 1st floor. Judge Wade promoted this and encouraged everyone to attend and participate. Desert will be provided with door prizes. RSVP to Shenna via email.

Vickie Rice thanked the DA's Office for reconsidering handling of the mental health cases with Major Depressive Disorder (MDD) diagnoses. It was also mentioned that DA and Public Defenders Office are working on a joint intake process and more will be announced soon on that. It was also mentioned that the census and referral numbers for the Specialty Courts is way too low, and we need to consider a BHSC working group to address ways to improve this. Lastly, it was agreed that a BHSC service/responsibility contract directory needs to be developed for everyone to know what each other is doing and how to contact the right people for various needs. Mike and Vickie will work on this.

Adjournment

The meeting was adjourned by Judge Wade at 940am. The next bi-meeting is set for Thursday, October 19, 2017 at 830am in the same location. Reminder was provided to everyone to submit their monthly stats to Mike Laughlin via email by the 2nd Friday of each month for distribution.

BHSC SEPTEMBER 2017

CARUTH SMART JUSTICE GRANT UPDATE

This is a 3-year, \$7 million Implementation Grant submitted by MMHPI to Caruth and was awarded in October 2016, leading to a 2-year, \$1.174 million sub-grant to Dallas Co. in Jan. 2017 to address Intercepts 2-4, and part of 5. The beta test of the project began on April 17th, and all the workgroups and sub-teams for the Intercepts 2-4 continue to meet/complete pre-implementation tasks related to procedures/forms, Court orders, space/staff preparations, modified resource allocations, and training curriculums/plans. The full implementation launch began Aug. 14th, and program activity/performance data from April 17- August 30, 2017 reflect:

- 5299 or 21% of the 25,375 book-ins screened MH positive (100% of all book-ins were MH screened)
- 848/17% of those screened MH positive were found MHPR Bond eligible by Pretrial, and Court-ordered for assessment (after criminal history and risk review)
- 563/69% of those ruled eligible were fully assessed (most with Recommendations for Standard Intensive or Routine OP)
- 285/31% of those ruled eligible were not assessed (due to refusal, early alternate release, etc.)
- 629/75% of those eligible were disposed by other means prior to presentation to Court
- 219/25% of those eligible were presented to the Court for bond decision
- 185/85% of those presented to the Magistrate were granted bond and released
- 22/9% of the 219 were denied bond and detained, and 12/6% of the 219 presented had an alternate disposition
- 185 or 100% of bond-released defendants were opened by Pretrial (15% to low level, 60% med. Level, and 20% to high level bond supervision).
- 185 releasees (100%) were connected/referred to follow up treatment by ACS and PTS
- 50 MHPR Bond cases were closed by PTS (25% successful/75% unsuccessful)

The next step will be completion of a full, start to finish, flowchart in October 2017 of the processes for everyone to commonly follow, along with a guide, and an agreed set of data elements and definitions for tracking implementation progress and client/system outcomes among all parties.

Lastly, MMHPI continues to meet and work with community providers to build up treatment resources related to Intercept 5 for referral and treatment connection upon release. They also continue to coordinate with the City and others on Intercept 1 (police and EMT response options) with the first agreements with them approved by the Dallas City Council over the summer. They have established job descriptions, and are currently hiring staff for the emergency response RIGHT Care Teams as well as 911 clinician imbeds.

**Department of Criminal Justice
FY2017 SAMHSA Grant Project**

	Oct.	Nov.	Dec.	Jan.	Feb.	Mar.	Apr.	May	June	July	Aug.	Sep.	FY2017 Total	FY2016 Total
Number of New Admissions	8	4	1	3	7	9	6	1	3	1	1	0	44	33
Number of Successful Completions	3	6	2	5	0	4	8	4	2	0	1	1	36	24
Number of Unsuccessful Completions	1	1	0	0	1	2	2	1	0	2	0	0	10	9
Average Days in Jail from Referral to Admission	5	6	3	4	6	9	10	6	8	12	7	0	7	4
Number of New Admissions on ELM	6	3	1	2	7	8	4	1	3	1	1	0	37	12
Program Referral Follow-Ups by Type (running total per grant year)														
Court Program Graduate													0	6
Active In Court Program													8	4
Active In Treatment at Nexus													2	N/A
In Jail													4	0
Re-Arrested and Released to Community													9	11
Re-Arrested and Released to Further Treatment													7	2
Released to TDCJ or State Jail													3	3
Active Warrant													11	7



Behavioral Health Steering Committee

530 Fund Sub-Committee

Attendees

Laura Edmonds, Shenna Oriabure, Keta Dickerson, Ruth Kaiser, Judge Kristin Wade, Lynn Richardson, Stella Lee, Leah Gamble, Judge Nancy Kennedy, Serena McNair

Review/Approval of Minutes

Laura Edmonds called the meeting to order at 9:34am and asked for a motion to approve the minutes. Lynn Richardson made a motion to approve the minutes. Judge Wade seconded the motion and the minutes were accepted by the group.

530 Fund Balance and Update

An update of the 530 Fund Balance was provided. Currently the balance for the Felony account (4020) is \$100,425.88; the Misdemeanor account (4031) is \$68,152.00 for a total of \$168,577.88. Laura presented the 530 Fund Monthly Expenses report for the period of October 2016- August 2017. Expenses paid included drug testing for a total \$751 and MH Specialty Court Coordinator Salary. Laura advised there were no credits to the fund. Laura believed the lack of credits may be due to when the report was generated. Laura will continue to monitor the situation.

Request for Funding

Laura Edmonds advised STAC was allotted \$2,445 for incentives in May 2017. STAC has begun submitting receipts for reimbursement. STAC submitted receipts totaling \$667.47 with \$1,777.53 remaining from the allotted amount. STAC will submit another receipt for t-shirts purchased for the Recovery Rally. Ruth Kaiser provided a synopsis of the Recovery Rally. Ruth advised there will be a recovery rally in Galveston during the month of October. There is free bus transportation (53 seats) to the rally but interested individuals must reserve immediately.

Drug Testing Line Item

Laura Edmonds provided a written report on the drug testing line item. Laura advised specialty courts are on target to use the total \$10,000 budgeted. A total of \$8,742.40 has been invoiced with \$1,257.60 remaining in the line item. A total of 247 specialty drug tests have been requested.

Misdemeanor DWI Court

Keta Dickerson again broached the topic of adding a \$10,000 line item to partially fund attorneys for the misdemeanor DWI court. Keta then opened the floor for questions. Judge Wade mentioned a conversation had with Judge Yoo and Judge Mulder regarding court appointed attorneys' pay slips. Judge Wade requested to know the number of clients in the DWI court program and attorney hours utilized. Multiple members suggested searching for alternative

funding due to limited money and resources. Another suggestion was to have Judge Patterson speak to the Civil DA and the commissioners.

FY 2018 Budget Review and Approval

Laura Edmonds opened discussion on the proposed FY 2018 530 Fund Budget. Laura stated the budget must be voted on to be briefed at the October 3rd Commissioners Court. Keta Dickerson requested a remedy for specialty courts seeking colored copies from DIVERT Court. Members were reminded there is a \$500 line item for office supplies in the 530 budget and each court’s budget includes office supplies. Laura increased the overall operating total by \$10,000 after speaking with the Auditor’s Office. The Auditor’s Office advised there is less money coming into the 530 fund and is projecting future operating budget will be around \$130,000. Laura advised moving forward there will be less money to work with in the fund. Laura provided three different recommendations with emphasis on (1) training (2) position (3) treatment. Laura requested the committee identify what is the emphasis of the fund. Lynn Richardson proposed the emphasis be on treatment and training with treatment being the priority. Laura asked what the impact on treatment was with grants awarded by the Office of the Governor. Serena McNair advised most of the grants went towards salaries and training. Judge Wade opined it is harder to find funding for treatment than training. Serena advised the CCIF Foundation is not as strong as it has been in the previous years; a greater burden may lay with the 530 funding. Serena expects the impact to be felt beginning in January 2018. Lynn stated specialty courts need to start looking at other resources like philanthropic. The group decided to move forward utilizing the budget proposal with the treatment emphasis. The budget was approved as follows:

Payroll	\$78,547.00
Training	\$26,500.00
Incentives	\$7,500.00
Inpatient Treatment (Pre-Adjudication)	\$23,000.00
Inpatient Treatment CSCD	\$20,000.00
Office Supplies	\$500.00
Transportation	\$3,000.00
Drug Testing	\$10,000.00
Operational Total	\$169,047.00

Texas State Office of the Governor Update

Keta Dickerson advised annual reporting to the Office of the Governor was due on September 20, 2017.

Announcements

Delightful Discussions last training set for November 2017. Keta Dickerson is working on the application for Operational Tune-up Training facilitated by NADCP. The Tune-Up Training is only for Adult Drug Courts. Keta and Shenna Oriabure will reach out to the other specialty courts to gather information and assess needs for an On Demand Training. The training will be specific to those courts.

Adjourn

The meeting was adjourned at 10:27 am and will reconvene on 11/8/17 @9:30am.

**530 Fund FY 17
Balances/Expenditures
Summary Page**

Month	Beg. Bal. Misd 4031	Expense	Credit	End Bal	Beg. Bal Fel 4020	Expense	Credit	End Bal	
Oct	\$ 70,726.15	\$ 4,173.70	\$ 6,746.85	\$ 73,299.30	\$ 84,943.04	\$ 2,254.36	\$ 4,337.78	\$ 87,026.45	
Nov	\$ 73,299.30	\$ 6,226.79	\$ 6,038.74	\$ 73,111.25	\$ 87,026.45	\$ -	\$ 4,149.73	\$ 91,364.24	
Dec	\$ 73,111.25	\$ 9,168.43	\$ 3,995.23	\$ 67,938.05	\$ 91,364.24	\$ 9,990.00	\$ 4,337.78	\$ 85,712.02	
Jan	\$ 67,938.05	\$ 6,539.71	\$ 12,614.68	\$ 74,013.02	\$ 85,712.02	\$ -	\$ 2,126.62	\$ 87,838.64	
Feb	\$ 74,013.02	\$ 6,204.37	\$ 7,293.80	\$ 75,102.45	\$ 87,838.64	\$ -	\$ 3,851.23	\$ 91,689.87	
Mar	\$ 75,102.45	\$ 6,666.11	\$ 9,639.38	\$ 78,075.72	\$ 91,689.87	\$ 10,851.96	\$ 4,980.28	\$ 85,818.19	
Apr	\$ 78,075.72	\$ 6,998.96	\$ 7,212.30	\$ 78,289.06	\$ 85,818.19	\$ -	\$ 9,155.08	\$ 94,973.27	
May	\$ 78,289.06	\$ 7,802.41	\$ 7,869.84	\$ 78,356.49	\$ 94,973.27	\$ 1,228.08	\$ 280.24	\$ 94,025.43	
June	\$ 78,356.49	\$ 10,091.77	\$ 7,016.09	\$ 75,280.81	\$ 94,025.43	\$ 1,079.07	\$ 4,262.01	\$ 97,208.37	
July	\$ 75,280.81	\$ 7,261.36	\$ 6,707.31	\$ 74,726.76	\$ 97,208.37	\$ 200.00	\$ 3,417.51	\$ 100,425.88	
Aug	\$ 74,726.76	\$ 6,574.76	\$ 7,953.41	\$ 76,105.41	\$ 100,425.88	\$ -	\$ 4,437.99	\$ 104,863.87	
<u>Sep</u>	<u>\$ 76,105.41</u>	<u>\$ 9,873.56</u>	<u>\$ -</u>	<u>\$ 66,231.85</u>	<u>\$ 104,863.87</u>	<u>\$ 5,552.50</u>	<u>\$ -</u>	<u>\$ 99,311.37</u>	
Totals		\$ 87,581.93	\$ 83,087.63		Totals		\$ 31,155.97	\$ 45,336.25	
Ending Balance				<u>\$ 66,231.85</u>	Ending Balance				<u>\$ 99,311.37</u>

Ending Bal Misd/Fel **\$ 165,543.22**

Comments: During the following reporting months these items were paid:

September : 4031 -- \$8,735.35 in Specialty Court Coordinator Salary; \$476.20 in Drug Testing; \$662.01 in Incentives for STAC

September: 4020 -- \$5,553.50 for Treatment at HWB for Divert Court clients

530 Fund Monthly Expenses

Line Item	Budget	Oct.	Nov.	Dec.	Jan.	Feb.	Mar.	April	May	June	July	Aug.	Sept.	Total	Balance
Payroll	74,667.81	2,886.15	5,732.29	8,398.43	5,823.56	5,823.56	5,823.56	5,823.56	5,823.56	7,950.65	5,823.56	5,823.56	8,735.35	74,667.81	0.00
Training	17,000.00						10,851.96		1,228.08	1,079.02	200.00			13,359.06	3,640.94
Incentives	15,000.00			570.00			334.55			705.46			662.01	2,272.02	12,727.98
Inpatient TX (Pre-Adjudication)	13,000.00												5,553.50	5,553.50	7,446.50
Inpatient TX	20,000.00													0.00	20,000.00
CSCD														0.00	500.00
Office Supplies	500.00													0.00	500.00
Transportation	10,000.00			9,990.00										9,990.00	10.00
Drug Testing	10,000.00	172.55	494.50		716.15	380.80	508.00	1,175.40	1,978.84	650.96	1,437.80	751.00	476.20	8,742.20	1,257.80
Operating															
Total	160,167.81														45,583.22
Incentives from Previous Budget														2,856.92	
Training from Previous Budget														532.44	
CREDITS															
Fund 4031		7,069.23	6,038.74	3,995.23	12,614.68	7,293.80	9,639.38	7,212.30	7,869.84	7016.09	6707.31	7953.41	0.00		
Fund 4022		4,337.78	4,149.73	4,337.78	2,126.62	3,851.23	4,980.28	9,155.08	280.24	4262.01	3417.51	4437.99	0.00		
Credits Total		11,407.01	10,188.47	8,333.01	14,741.30	11,145.03	14,619.66	16,367.38	8,150.08	11,278.10	10,124.82	12,391.40	0.00		

Incentives
 MHJD: \$570
 PRIDE: \$334.55
 STAC: \$1367.47
 SET: \$40

Treatment (Pre-Adjudication)
 *Approval for Divert to use
 \$10,200 for 2 participants
 *Approval for MHJD to use
 \$3030 for 1 participant for 36 days of tx

TASC Training
 Hotel: \$5,691.96
 TASC Registration: \$5,160
 TASC Reimbursements: \$1,828.08
TOTAL: \$12,680.04



Dallas County

Department of Criminal Justice

FY2018 530 Fund Budget

Dept.	Account	Line Item	Budget
4031	1020	Payroll	\$78,547.00
4020	4210	Training	\$26,500.00
4031	2240	Incentives	\$7,500.00
4020	6620	Inpatient TX (Pre-Adjudication)	\$23,000.00
4020	6620	Inpatient TX CSCD (Post-Adjudication)	\$20,000.00
4031	2160	Office Supplies	\$500.00
4020	5590	Transportation	\$3,000.00
4031	2920	Drug Testing	\$10,000.00
		Operating Total	\$169,047.00

The 530 Fund budget allotments apply to all Dallas County specialty courts that are certified through the Texas State Office of the Governor. These courts include: AIM, ATLAS, 4-C Reentry Court, Competency Court, Felony DWI Court, IIP, Mental Health Diversion Court, Misdemeanor DWI Court, Veterans Court, DIVERT Court, Dual Diagnosis Aftercare Court (DDC), PRIDE Court, STAC Court, and STAR Court.

Payroll:

Line item covers the salary (\$4,784.59/monthly) and taxes and benefits (\$1,761.00/monthly) of the Specialty Court Coordinator position.

Training:

Line item covers expenses for in-house training, or local in-state training for those who are working with a certified specialty court. Covered expenses to include transportation expenses (airfare, mileage, and ground transportation), registration fees, speaker/presenter fees, facility space fees, lodging, food/meals, and other applicable incidentals.

Incentives:

Line item covers expenses to purchase items such as gift cards, food and supplies for graduations or other events/celebrations, or other items to be utilized for the purpose of providing participant incentives. Incentives will not exceed the amount of \$15.00 per specialty court participant.

Inpatient Treatment (Pre-Adjudication):

Line item covers the per diem rate for participants to engage in residential treatment with a community-based provider. Funding from this line item will only apply to participants who are engaged in a pre-adjudicated certified specialty court program.

Inpatient Treatment (CSCD/Post-Adjudication):

Line item covers the per diem rate for participants to engage in residential treatment with a community-based provider. Funding from this line item will only apply to participants who are engaged in a post-adjudicated certified specialty court program.

Office Supplies:

Line item covers expenses to purchase office supplies and also covers printing fees.

Transportation:

Line item covers the purchase of bus passes that are distributed to each specialty court for the benefit of its participants, to assist in their transportation needs.

Drug Testing:

Line item purchases lab urine tests for certified specialty courts through Redwood Toxicology Laboratories.



	Past Year Avg	2016-10	2016-11	2016-12	2017-01	2017-02	2017-03	2017-04	2017-05	2017-06	2017-07	Average:	Sum:
Total Service Episodes:	768	704	717	551	694	900	1,191	959	846	806	776	814.4	8,144
Total Unique CID:	589	696	672	477	592	763	960	750	593	563	522	658.8	6,588
Total Unique SID:		695	671	474	591	762	958	748	593	563	520	657.5	6,575
% Change to DY 4 by CID		118.17%	114.09%	80.98%	100.51%	129.54%	162.99%	127.33%	100.68%	95.59%	88.62%		

<u>Total Encounters by Type:</u>		2016-10	2016-11	2016-12	2017-01	2017-02	2017-03	2017-04	2017-05	2017-06	2017-07	Average:	Sum:
Triage		704	717	551	694	900	1,191	959	846	806	776	814.4	8,144
Care Coordination		2,736	2,532	2,304	2,626	2,588	2,943	2,239	2,330	2,689	2,225	2,521.2	25,212
F2F Encounter		242	255	252	211	237	292	301	361	403	344	289.8	2,898
Sum:		3,682	3,504	3,107	3,531	3,725	4,426	3,499	3,537	3,898	3,345	3,625.4	36,254

<u>F2F Encounter</u>		2016-10	2016-11	2016-12	2017-01	2017-02	2017-03	2017-04	2017-05	2017-06	2017-07	Average:	Sum:
MHPR Bond								77	163	154	141	133.75	535
Non-MHPR		242	255	252	211	237	292	224	198	249	203	236.3	2,363
Sum:		242	255	252	211	237	292	301	361	403	344	289.8	2,898

	2016-10	2016-11	2016-12	2017-01	2017-02	2017-03	2017-04	2017-05	2017-06	2017-07	Average:	Sum:
Service Episodes:	704	717	551	694	900	1,191	959	846	806	776	814.4	8,144

	2016-10	2016-11	2016-12	2017-01	2017-02	2017-03	2017-04	2017-05	2017-06	2017-07	Average:	Sum:
Unique Consumers:												
By N* ID	602	597	423	500	530	626	529	460	445	372	508.4	5,084
By Client ID	94	75	54	92	233	334	221	133	118	150	150.4	1,504
TOTAL Unique Consumers:	696	672	477	592	763	960	750	593	563	522	658.8	6,588
TOTAL Unique Consumers as %:	98.86%	93.72%	86.57%	85.30%	84.78%	80.60%	78.21%	70.09%	69.85%	67.27%		

	2016-10	2016-11	2016-12	2017-01	2017-02	2017-03	2017-04	2017-05	2017-06	2017-07	Average:	Sum:
Unique F2F:												
By N* ID	185	186	165	117	111	154	179	208	228	176	170.9	1,709
By Client ID	40	37	30	35	66	75	63	80	69	75	57	570
TOTAL Unique F2F:	225	223	195	152	177	229	242	288	297	251	207.18	2,279
TOTAL Unique F2F as %:	92.98%	87.45%	77.38%	72.04%	74.68%	78.42%	80.40%	79.78%	73.70%	72.97%		

	2016-10	2016-11	2016-12	2017-01	2017-02	2017-03	2017-04	2017-05	2017-06	2017-07	2017-08		Average:	Sum:
F2F Percentages:	34.38%	35.56%	45.74%	30.40%	26.33%	24.52%	31.39%	42.67%	50.00%	44.33%			36.53%	365.32%



Crisis Services Project

Frank Crowley

CSP Monthly Report DY6_No Graphs

Last Refresh: 8/21/17 at 3:40:02 PM GMT-05:00

<u>Encounters by Type:</u>	2016-10	2016-11	2016-12	2017-01	2017-02	2017-03	2017-04	2017-05	2017-06	2017-07	Average:	Sum:
Triage	704	717	551	694	900	1,191	959	846	806	776	814.4	8,144
Care Coordination	2,736	2,532	2,304	2,626	2,588	2,943	2,239	2,330	2,689	2,225	2,521.2	25,212
F2F Encounter	242	255	252	211	237	292	301	361	403	344	289.8	2,898
TOTAL Encounters:	3,682	3,504	3,107	3,531	3,725	4,426	3,499	3,537	3,898	3,345	3,625.4	36,254

<u>Female:</u>	2016-10	2016-11	2016-12	2017-01	2017-02	2017-03	2017-04	2017-05	2017-06	2017-07	Average:	Sum:
Black	99	98	86	69	110	117	96	99	94	84	95.2	952
Hispanic	17	29	17	24	33	34	29	29	26	21	25.9	259
Other			2	1	2	2	2	2			1.83	11
Unknown	1	1	2		1	1	2			1	1.29	9
White	63	51	46	46	58	86	83	64	52	53	60.2	602
TOTAL Female:	180	179	153	140	204	240	212	194	172	159	183.3	1,833

<u>Male:</u>	2016-10	2016-11	2016-12	2017-01	2017-02	2017-03	2017-04	2017-05	2017-06	2017-07	Average:	Sum:
Black	285	286	188	258	325	371	286	228	234	217	267.8	2,678
Hispanic	71	57	44	51	85	146	110	52	59	48	72.3	723
Other	6	2	2	6	2	8	3	4	3	1	3.7	37
Unknown	3	9	3	9	2	5	3	3	2	2	4.1	41
White	133	123	85	126	141	187	134	111	90	94	122.4	1,224
TOTAL Male:	498	477	322	450	555	717	536	398	388	362	470.3	4,703

Triage 12	6,563
Recidivism 12-12	1,433
Recidivism 12-12%	21.83%

Triage 6	4,148
Recidivism 6-6	554
Recidivism 6-6%	13.36%

Triage 6	4,148
Recidivism 6-12	1,180
Recidivism 6-12%	28.45%

	October	November	December	January	February	March	April	May	June	July
Year MO	2016/10	2016/11	2016/12	2017/01	2017/02	2017/03	2017/04	2017/05	2017/06	2017/07
Recidivism 12-12	9	66	128	203	345	551	745	971	1,182	1,433
Triage 12	695	1,365	1,839	2,430	3,191	4,148	4,893	5,486	6,046	6,563
Recidivism 12-12%	1.29%	4.84%	6.96%	8.35%	10.81%	13.28%	15.23%	17.70%	19.55%	21.83%

	October	November	December	January	February	March	April	May	June	July
Year MO	2016/10	2016/11	2016/12	2017/01	2017/02	2017/03	2017/04	2017/05	2017/06	2017/07
Recidivism 6-6	9	66	128	203	345	551	554	554	554	554
Triage 6	695	1,365	1,839	2,430	3,191	4,148	4,148	4,148	4,148	4,148
Recidivism 12-12%	1.29%	4.84%	6.96%	8.35%	10.81%	13.28%	13.36%	13.36%	13.36%	13.36%

	October	November	December	January	February	March	April	May	June	July
Year MO	2016/10	2016/11	2016/12	2017/01	2017/02	2017/03	2017/04	2017/05	2017/06	2017/07
Recidivism 6-12	9	66	128	203	345	551	732	906	1,044	1,180
Triage 6	695	1,365	1,839	2,430	3,191	4,148	4,148	4,148	4,148	4,148
Recidivism 12-12%	1.29%	4.84%	6.96%	8.35%	10.81%	13.28%	17.65%	21.84%	25.17%	28.45%

AUGUST 2017 Monthly Report

report reflects up to August 25th, 2017

Dallas County Crisis Services Program	Program Specific and Systems Update	Summary of NTBHA's Monthly Activities	Action Items/Concerns
1	Adapt Community Solutions (ACS) – Targets member released from jail using ACS to ensure continuity of care	Conducted case consultations on approximately 20 referrals.	Not Applicable
2	Transicare Post Acute Transitional Services (PATS) – Targets high utilizers released from jail with more intensive need to ensure continuity of care	Provided case consultation and clinical support during PATS/FACT case review. Completed hospitalization/benefit inquiries for 1 client.	Not Applicable
3	ACT Forensic Diversion Unit (FDU) – Provides ACT services for high utilizers of the legal system. Responsible for approving evaluations of FDU referrals and FDU oversight	Clinical review of cases for appropriate LOC recommendations on 11 FDU referrals, 9 of which were approved for FDU assessment. Reviewed 5 recovery plans. There was no MD consult during this reporting period.	Not Applicable
4	Caruth Smart Justice	No documented activities during this reporting period.	Not Applicable
5	CSP – Cottages Project – Housing complex of 50 cottages that provides housing, mental health assessments and counseling for clients categorized as high utilizers of MH and judicial systems	Revised MOUs sent to representatives at Dallas County and City Square for review and approval. Reviewed hospitalization history for 1 potential program participant.	Finalize MOU between City Square and NTBHA.

Forensic Diversion Unit (FDU) Report

	Jan-17	Feb-17	Mar-17	Apr-17	May-17	Jun-17	Jul-17	Aug-17	Sep-17	Oct-17	Nov-17
Beginning Census	47	46	50	45	44	47	50				
Number of Referrals Received from CSP											
Adapt	7	8	16	12	20	17	8				
Metrocare	0	0									
Transicare	0	0									
DA	0	0									
Number of Admissions	5	8	10	7	9	8	6				
Number Discharged	0	4	10	3	6	5	9				
Number not admitted due to:											
Client qualifies for ACT	0	0	0	2		4					
Client qualifies for other programs	1	0	0								
Client didn't meet level of need required	0	0	0				1				
Other reasons	0	0	0	3	7	5	1				
Average Service Utilization:											
Average hours seen	7.22	6.46	6.36	6.52	6.72	5.19	6.18				
Encounter Breakdown:											
Face to Face	254	275.25	245	264.25	269	240.28	298.75				
Service Coordination	193	225	215	188	296	210.25	239				
Number of clients accessing:											
Emergency Room (medical)	0	0	0		0	0	0				
23-hour observation (psych)	1	1	0	1							
Inpatient (med/ psych)	0	0	0		2	2	1				
Jail book-in	10	2	0	1	5	5	2				
Reasons for Discharge:											
Graduate		0	0		1	1	0				
Client Disengagement	2	3	0	3	3	1	7				
Extended Jail stay (case-by-case basis)		0	0		1						
Other Intervening factors		1	0	2	1	1	2				
End of Month Stats:											
Number of Active FDU clients end of month	46	50	48	44	47	50	47				
Number of Unique Consumers	2	0	2	0	47	50	47				
# of clients waiting to be released from jail	11	12	15	12	14	9	8				
Average Length of stay on FDU (month)	12.27	11.38	7.72	8.06	6.33	5.54	5.63				
Maximum Census	46	46	46	46	46	46	46				

Transicare Reporting

Crisis Services Project

	2016-10	2016-11	2016-12	2017-01	2017-02	2017-03	2017-04	2017-05	2017-06	2017-07
Beginning Census	115	115	107	103	98	123	127	140	133	146
REFERRALS	46	33	32	23	42	56	79	76	78	78
Admissions										
Referred Admitted	19	18	16	8	26	28	30	19	32	30
No Admit Client Refusal	2	1	1	2	0	1	2	1	2	1
No Admit Criteria	1	1	3	0	1	0	1	0	3	0
No Admit Structural	2	6	2	2	2	3	5	5	1	2
Pending	22	7	10	11	13	24	41	54	40	23
<i>PRIOR PENDING</i>										
Pending Admitted	12	17	2	4	8	11	17	18	23	18
No Admit Client Refusal	3	3	4	1	0	0	0	1	0	2
No Admit Criteria	2	1	1	1	0	0	0	1	2	1
No Admit Structural	0	4	3	4	1	1	4	2	2	2
Total Admissions	31	35	18	12	34	39	47	37	55	48
Discharges										
Success Transfer	7	3	4	3	2	4	5	6	3	1
DC Midterm Disengage	12	16	6	2	4	4	4	13	12	11
DC Rapid Disengage	6	6	2	4	2	14	5	10	9	12
DC Structural	6	18	10	9	1	13	20	15	18	11
Total Discharged	31	43	22	18	9	35	34	44	42	35
Active End Of Month	115	107	103	97	123	127	140	133	146	159
Outcome Data										
<i>Terrell State Hospital Linkages</i>										
≤7 Connect To Prescriber	1	6	2	1	4	6	2	4	5	3
≤30 Connect To Prescriber	0	1	0	0	0	0	0	0	0	0
Missed Metric	1	3	0	1	3	3	0	1	0	0
Total Released	2	10	2	2	7	9	2	5	5	3
Cummulative ≤7 Connect %	50.0%	58.3%	64.3%	62.5%	60.9%	62.5%	64.7%	66.7%	70.5%	72.3%
Cummulative ≤30 Connect %	50.0%	66.7%	71.4%	68.8%	65.2%	65.6%	67.6%	69.2%	72.7%	74.5%
Missed Metric	50.0%	33.3%	28.6%	31.3%	34.8%	34.4%	32.4%	30.8%	27.3%	25.5%
<i>Unduplicated Served</i>										
Monthly Unduplicated	141	141	124	111	120	155	156	162	183	206
DSRIP YTD Unduplicated Served	141	180	209	227	259	308	352	397	460	530
Encounter Data										
F2F Encounter	848	840	730	753	802	855	1019	1196	1333	1368
Care Coord	198	138	113	82	30	117	119	108	53	58
Total	1046	978	843	835	832	972	1138	1304	1386	1426

SEPTEMBER 2017 Monthly Report

report reflects up to August 25th, 2017

Dallas County Crisis Services Program	Program Specific and Systems Update	Summary of NTBHA's Monthly Activities	Action Items/Concerns
1	Adapt Community Solutions (ACS) – Targets member released from jail using ACS to ensure continuity of care	Conducted case consultations on approximately 22 referrals.	Not Applicable
2	Transicare Post Acute Transitional Services (PATS) – Targets high utilizers released from jail with more intensive need to ensure continuity of care	<p>Provided case consultation and clinical support during PATS/FACT case review.</p> <p>Completed hospitalization/benefit inquiries for 2 clients.</p> <p>Coordinated ACT referral for 1 client</p>	Not Applicable
3	ACT Forensic Diversion Unit (FDU) – Provides ACT services for high utilizers of the legal system. Responsible for approving evaluations of FDU referrals and FDU oversight	<p>Clinical review of cases for appropriate LOC recommendations on 10 FDU referrals, 9 of which were approved for FDU assessment.</p> <p>Reviewed 4 recovery plans. There was no MD consult during this reporting period.</p>	Not Applicable
4	Caruth Smart Justice	No documented activities during this reporting period.	Not Applicable
5	CSP – Cottages Project – Housing complex of 50 cottages that provides housing, mental health assessments and counseling for clients categorized as high utilizers of MH and judicial systems	<p>MOU between NTBHA and City Square executed.</p> <p>9 candidates reviewed</p>	Not Applicable



	Past Year Avg	2016-10	2016-11	2016-12	2017-01	2017-02	2017-03	2017-04	2017-05	2017-06	2017-07	2017-08	2017-09	Average:	Sum:
Total Service Episodes:	768	704	717	551	694	900	1,191	959	846	806	776	855	702	808.42	9,701
Total Unique CID:	589	696	672	477	591	763	959	749	592	560	520	545	440	630.33	7,564
Total Unique SID:		695	671	476	590	762	957	747	592	560	519	545	440	629.5	7,554
% Change to DY 4 by CID		118.17%	114.09%	80.98%	100.34%	129.54%	162.82%	127.16%	100.51%	95.08%	88.29%	92.53%	74.70%		

<u>Total Encounters by Type:</u>		2016-10	2016-11	2016-12	2017-01	2017-02	2017-03	2017-04	2017-05	2017-06	2017-07	2017-08	2017-09	Average:	Sum:
Triage		704	717	551	694	900	1,191	959	846	806	776	855	702	808.42	9,701
Care Coordination		2,736	2,532	2,304	2,626	2,588	2,943	2,239	2,330	2,689	2,225	2,721	2,304	2,519.75	30,237
F2F Encounter		242	255	252	211	237	292	301	361	403	344	468	401	313.92	3,767
Sum:		3,682	3,504	3,107	3,531	3,725	4,426	3,499	3,537	3,898	3,345	4,044	3,407	3,642.08	43,705

<u>F2F Encounter</u>		2016-10	2016-11	2016-12	2017-01	2017-02	2017-03	2017-04	2017-05	2017-06	2017-07	2017-08	2017-09	Average:	Sum:
MHPR Bond								77	163	155	141	243	218	166.17	997
Non-MHPR		242	255	252	211	237	292	224	198	248	203	225	183	230.83	2,770
Sum:		242	255	252	211	237	292	301	361	403	344	468	401	313.92	3,767



	2016-10	2016-11	2016-12	2017-01	2017-02	2017-03	2017-04	2017-05	2017-06	2017-07	2017-08	2017-09	Average:	Sum:
Service Episodes:	704	717	551	694	900	1,191	959	846	806	776	855	702	808.42	9,701

	2016-10	2016-11	2016-12	2017-01	2017-02	2017-03	2017-04	2017-05	2017-06	2017-07	2017-08	2017-09	Average:	Sum:
Unique Consumers:														
By N* ID	602	598	423	500	531	626	529	460	444	373	395	238	476.58	5,719
By Client ID	94	74	54	91	232	333	220	132	116	147	150	202	153.75	1,845
TOTAL Unique Consumers:	696	672	477	591	763	959	749	592	560	520	545	440	630.33	7,564
TOTAL Unique Consumers as %:	98.86%	93.72%	86.57%	85.16%	84.78%	80.52%	78.10%	69.98%	69.48%	67.01%	63.74%	62.68%		

	2016-10	2016-11	2016-12	2017-01	2017-02	2017-03	2017-04	2017-05	2017-06	2017-07	2017-08	2017-09	Average:	Sum:
Unique F2F:														
By N* ID	185	186	165	118	111	154	179	209	227	177	224	139	172.83	2,074
By Client ID	40	37	30	34	66	75	63	79	68	74	108	134	67.33	808
TOTAL Unique F2F:	225	223	195	152	177	229	242	288	295	251	332	273	221.69	2,882
TOTAL Unique F2F as %:	92.98%	87.45%	77.38%	72.04%	74.68%	78.42%	80.40%	79.78%	73.20%	72.97%	70.94%	68.08%		

	2016-10	2016-11	2016-12	2017-01	2017-02	2017-03	2017-04	2017-05	2017-06	2017-07	2017-08	2017-09	Average:
F2F Percentages:	34.38%	35.56%	45.74%	30.40%	26.33%	24.52%	31.39%	42.67%	50.00%	44.33%	54.74%	57.12%	39.76%

Triage 12	7,549
Recidivism 12-12	1,969
Recidivism 12-12%	26.08%

Triage 6	4,148
Recidivism 6-6	555
Recidivism 6-6%	13.38%

Triage 6	4,148
Recidivism 6-12	1,434
Recidivism 6-12%	34.57%

	October	November	December	January	February	March	April	May	June	July	August	September
Year MO	2016/10	2016/11	2016/12	2017/01	2017/02	2017/03	2017/04	2017/05	2017/06	2017/07	2017/08	2017/09
Recidivism 12-12	9	66	128	203	345	552	745	971	1,182	1,432	1,701	1,969
Triage 12	695	1,365	1,841	2,431	3,192	4,148	4,894	5,486	6,046	6,564	7,109	7,549
Recidivism 12-12%	1.29%	4.84%	6.95%	8.35%	10.81%	13.31%	15.22%	17.70%	19.55%	21.82%	23.93%	26.08%

	October	November	December	January	February	March	April	May	June	July	August	September
Year MO	2016/10	2016/11	2016/12	2017/01	2017/02	2017/03	2017/04	2017/05	2017/06	2017/07	2017/08	2017/09
Recidivism 6-6	9	66	128	203	345	552	555	555	555	555	555	555
Triage 6	695	1,365	1,841	2,431	3,192	4,148	4,148	4,148	4,148	4,148	4,148	4,148
Recidivism 6-6%	1.29%	4.84%	6.95%	8.35%	10.81%	13.31%	13.38%	13.38%	13.38%	13.38%	13.38%	13.38%

	October	November	December	January	February	March	April	May	June	July	August	September
Year MO	2016/10	2016/11	2016/12	2017/01	2017/02	2017/03	2017/04	2017/05	2017/06	2017/07	2017/08	2017/09
Recidivism 6-12	9	66	128	203	345	552	732	906	1,044	1,180	1,317	1,434
Triage 6	695	1,365	1,841	2,431	3,192	4,148	4,148	4,148	4,148	4,148	4,148	4,148
Recidivism 6-12%	1.29%	4.84%	6.95%	8.35%	10.81%	13.31%	17.65%	21.84%	25.17%	28.45%	31.75%	34.57%

Forensic Diversion Unit (FDU) Report

	Jan-17	Feb-17	Mar-17	Apr-17	May-17	Jun-17	Jul-17	Aug-17	Sep-17	Oct-17	Nov-17
Beginning Census	47	46	50	45	44	47	50	47			
Number of Referrals Received from CSP											
Adapt	7	8	16	12	20	17	8	15			
Metrocare	0	0									
Transicare	0	0									
DA	0	0									
Number of Admissions	5	8	10	7	9	8	6	7			
Number Discharged	0	4	10	3	6	5	9	3			
Number not admitted due to:											
Client qualifies for ACT	0	0	0	2		4		1			
Client qualifies for other programs	1	0	0								
Client didn't meet level of need required	0	0	0				1	2			
Other reasons	0	0	0	3	7	5	1	5			
Average Service Utilization:											
Average hours seen	7.22	6.46	6.36	6.52	6.72	5.19	6.18	10.32			
Encounter Breakdown:											
Face to Face	254	275.25	245	264.25	269	240.28	298.75	324.54			
Service Coordination	193	225	215	188	296	210.25	239	181.75			
Number of clients accessing:											
Emergency Room (medical)	0	0	0		0	0	0	0			
23-hour observation (psych)	1	1	0	1							
Inpatient (med/ psych)	0	0	0		2	2	1	1			
Jail book-in	10	2	0	1	5	5	2	5			
Reasons for Discharge:											
Graduate		0	0		1	1	0	1			
Client Disengagement	2	3	0	3	3	1	7	2			
Extended Jail stay (case-by-case basis)		0	0		1						
Other Intervening factors		1	0	2	1	1	2	1			
End of Month Stats:											
Number of Active FDU clients end of month	46	50	48	44	47	50	47	50			
Number of Unique Consumers	2	0	2	0	47	50	47	50			
# of clients waiting to be released from jail	11	12	15	12	14	9	8	6			
Average Length of stay on FDU (month)	12.27	11.38	7.72	8.06	6.33	5.54	5.63	5.99			
Maximum Census	46	46	46	46	46	46	46	46			

Transicare Reporting

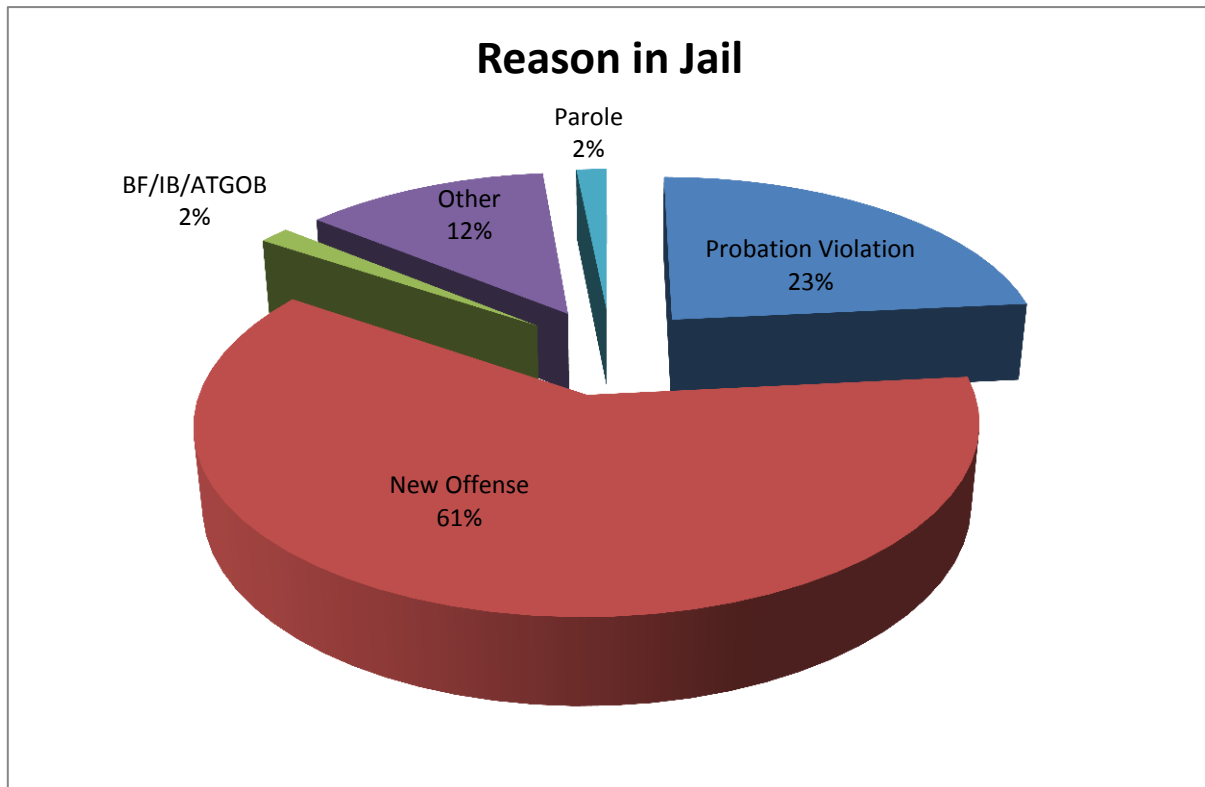
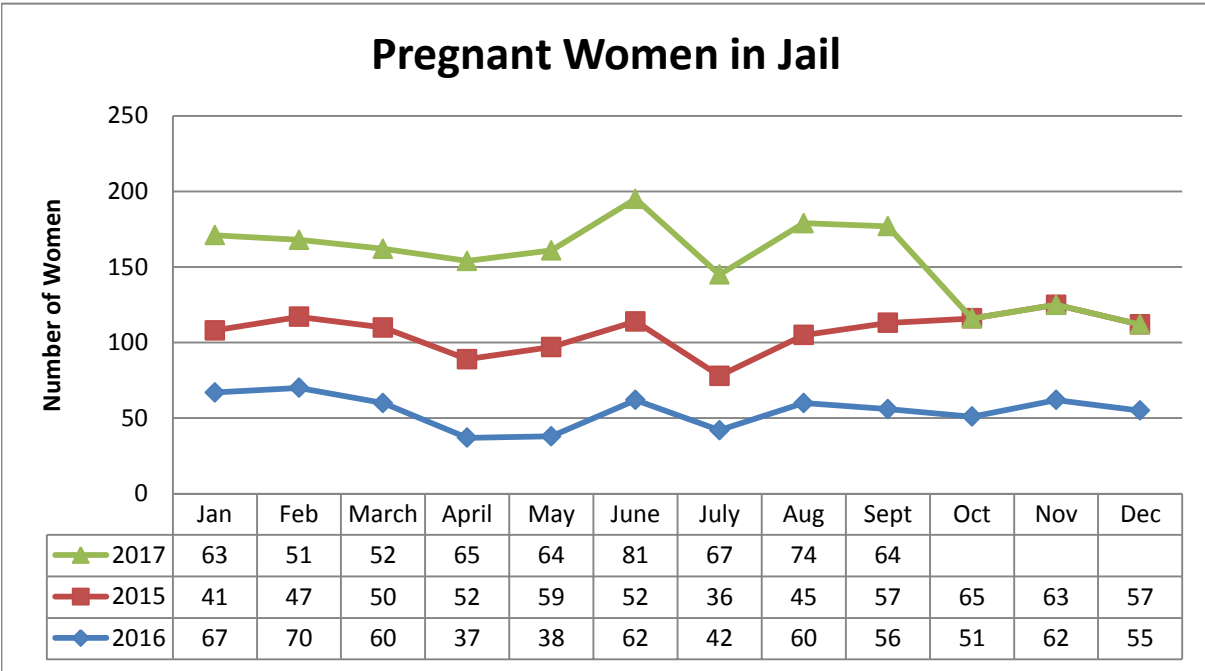
Crisis Services Project

	Oct-16	Nov-16	Dec-16	Jan-17	Feb-17	Mar-17	Apr-17	May-17	Jun-17	Jul-17	Aug-17
Beginning Census	115	115	107	103	98	123	127	140	133	146	159
REFERRALS	46	33	32	23	42	56	79	76	78	78	75
Admissions											
Referred Admitted	19	18	16	8	26	28	30	19	32	30	34
No Admit Client Refusal	2	1	1	2	0	1	2	1	2	1	0
No Admit Criteria	1	1	3	0	1	0	1	0	3	0	3
No Admit Structural	2	6	2	2	2	3	5	5	1	2	5
Pending	22	7	10	11	13	24	41	54	40	23	33
<i>PRIOR PENDING</i>											
Pending Admitted	12	17	2	4	8	11	17	18	23	18	5
No Admit Client Refusal	3	3	4	1	0	0	0	1	0	2	1
No Admit Criteria	2	1	1	1	0	0	0	1	2	1	5
No Admit Structural	0	4	3	4	1	1	4	2	2	2	19
Total Admissions	31	35	18	12	34	39	47	37	55	48	39
Discharges											
Success Transfer	7	3	4	3	2	4	5	6	3	1	3
DC Midterm Disengage	12	16	6	2	4	4	4	13	12	11	23
DC Rapid Disengage	6	6	2	4	2	14	5	10	9	12	14
DC Structural	6	18	10	9	1	13	20	15	18	11	10
Total Discharged	31	43	22	18	9	35	34	44	42	35	50
Active End Of Month	115	107	103	97	123	127	140	133	146	159	
Outcome Data											
<i>Terrell State Hospital Linkages</i>											
≤7 Connect To Prescriber	1	6	2	1	4	6	2	4	5	3	5
≤30 Connect To Prescriber	0	1	0	0	0	0	0	0	0	0	
Missed Metric	1	3	0	1	3	3	0	1	0	0	0
Total Released	2	10	2	2	7	9	2	5	5	3	5
Cummulative ≤7 Connect %	50.0%	58.3%	64.3%	62.5%	60.9%	62.5%	64.7%	66.7%	70.5%	72.3%	75.0%
Cummulative ≤30 Connect %	50.0%	66.7%	71.4%	68.8%	65.2%	65.6%	67.6%	69.2%	72.7%	74.5%	76.9%
Missed Metric	50.0%	33.3%	28.6%	31.3%	34.8%	34.4%	32.4%	30.8%	27.3%	25.5%	23.1%
<i>Unduplicated Served</i>											
Monthly Unduplicated	141	141	124	111	120	155	156	162	183	206	205
DSRIP YTD Unduplicated Served	141	180	209	227	259	308	352	397	460	530	664
<i>Encounter Data</i>											
F2F Encounter	848	840	730	753	802	855	1019	1196	1333	1368	1375
Care Coord	198	138	113	82	30	117	119	108	53	58	63
Total	1046	978	843	835	832	972	1138	1304	1386	1426	1438

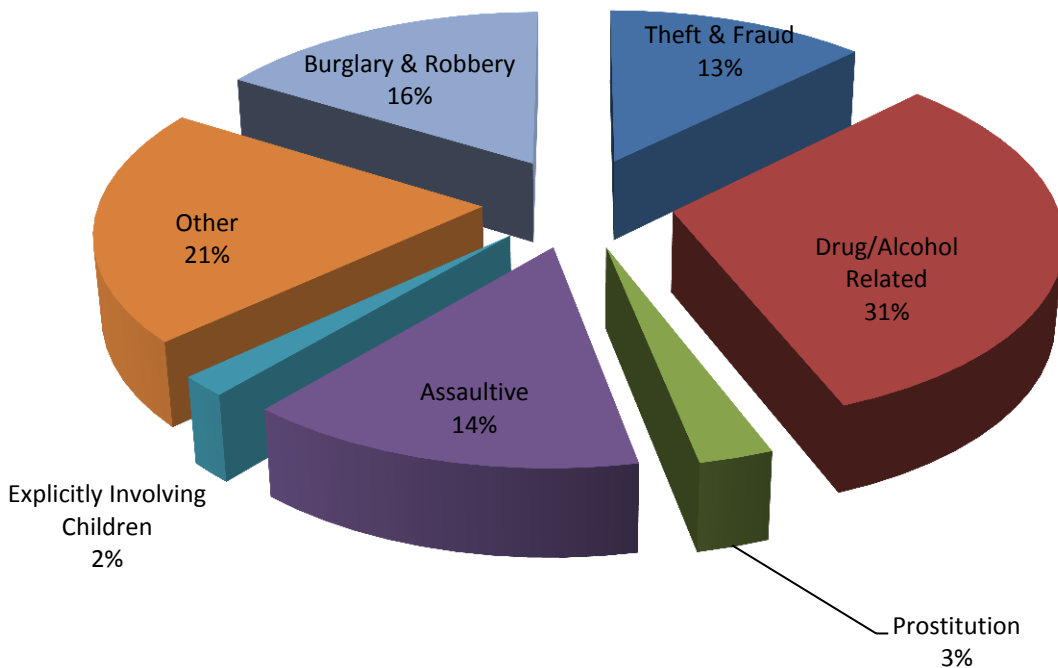
Jail Competency Stats 2017

	Jan	Feb	March	April	May	June	July	Aug	Sept	Oct	Nov
Active											
New Evals - Incompetent	41	48	67	60	68	56	56	59	59		
Waiting for the hospital - End of month	68	51	76	77	74	102	106	126	117		
Returned to jail from the hospital	30	23	24	22	21	25	23	32	26		
Closed											
New Evals - Competent	21	33	34	38	51	34	42	38	41		
Admitted to the state hospital	35	36	27	34	41	36	34	30	32		
Maximum Secure Facility	8	4	4	6	8	5	6	2	7		
Non-Maximum Secure Facility	27	32	23	28	33	31	28	28	25		

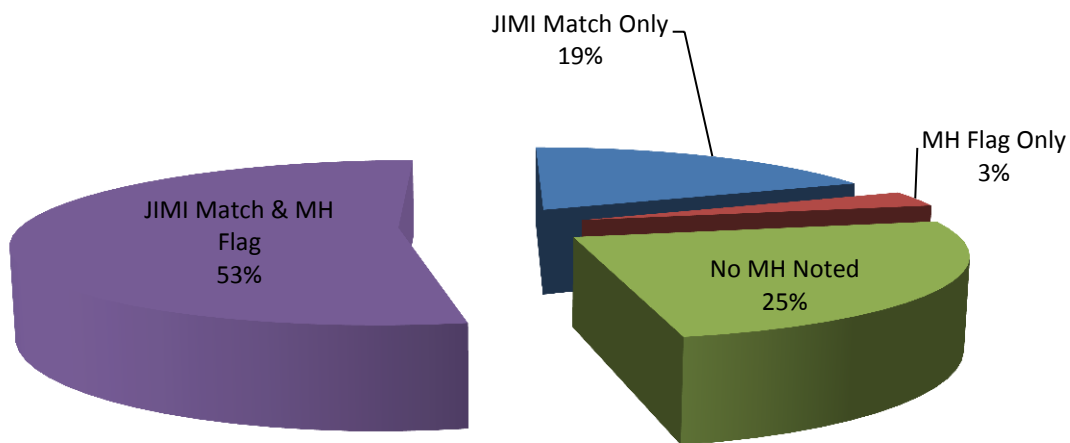
Unique Individuals
Days In Jail



Offense Type

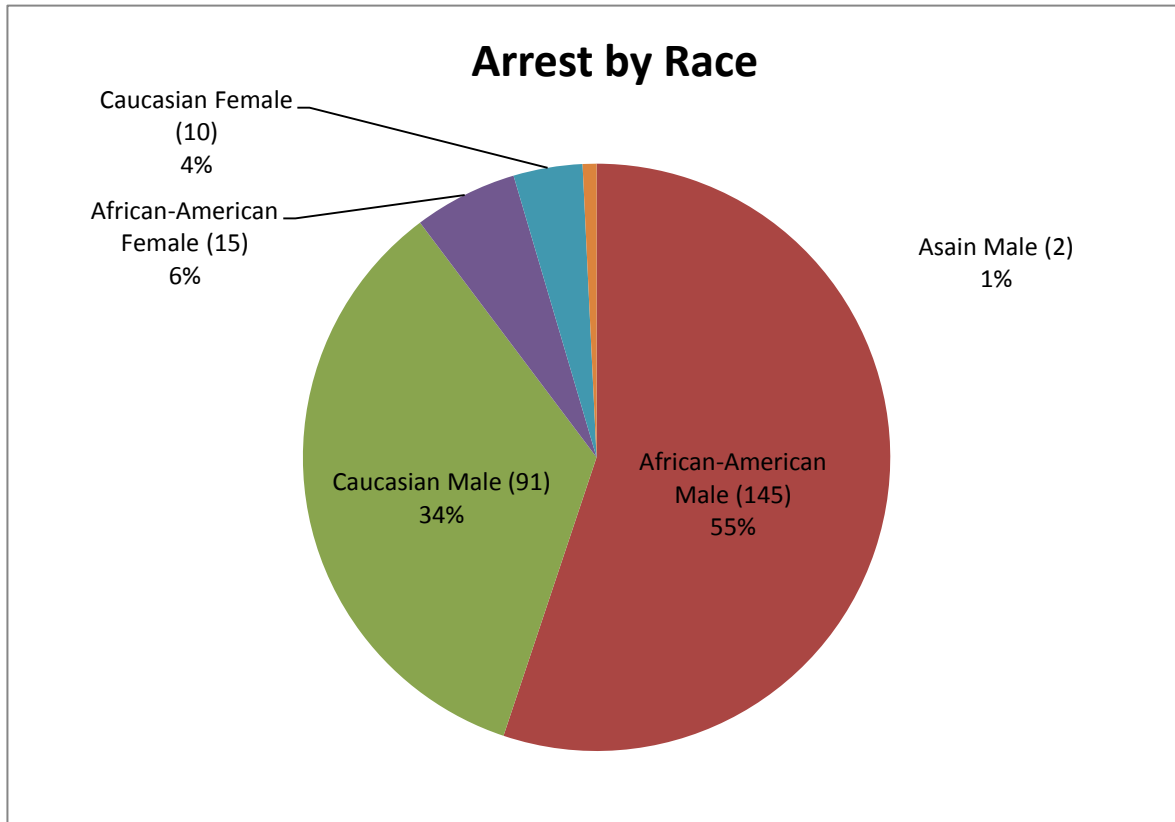
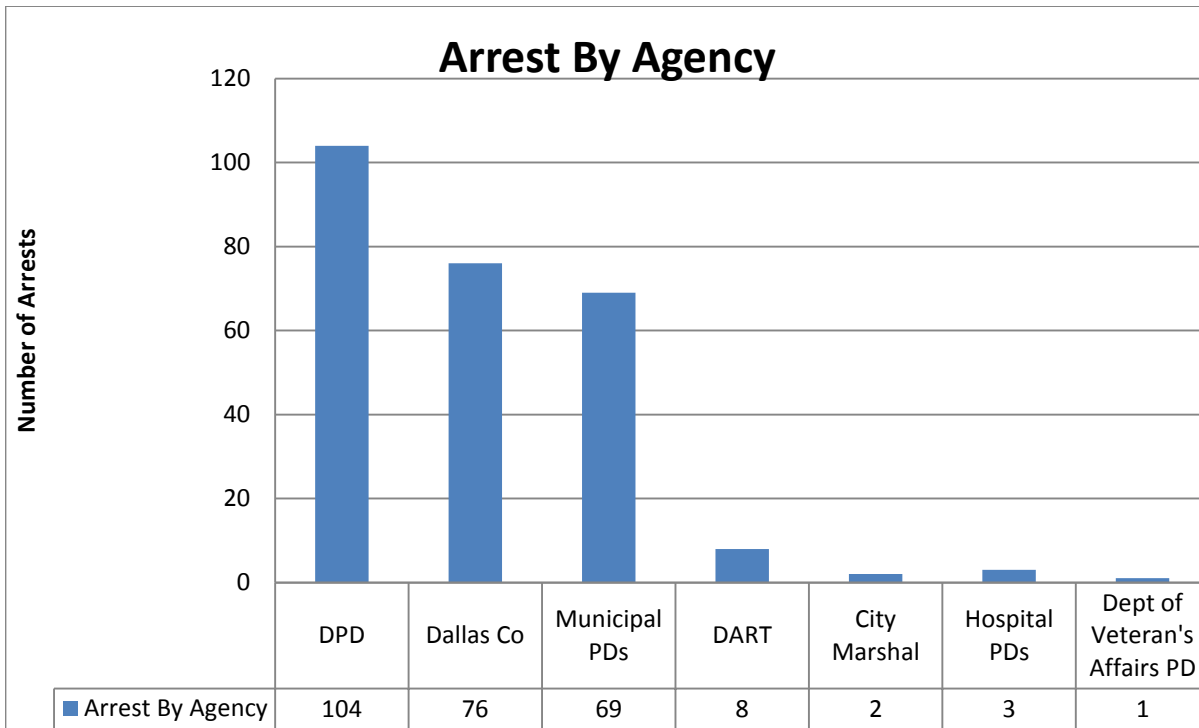


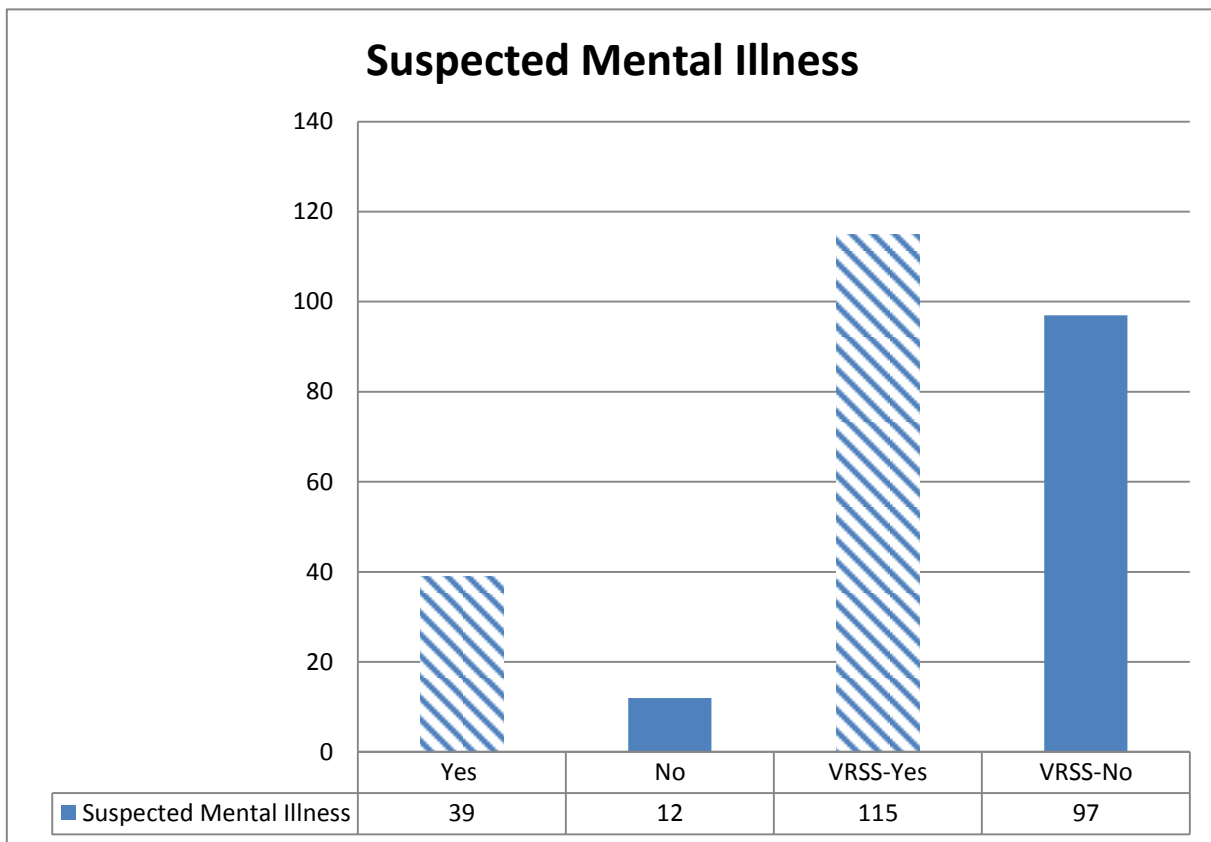
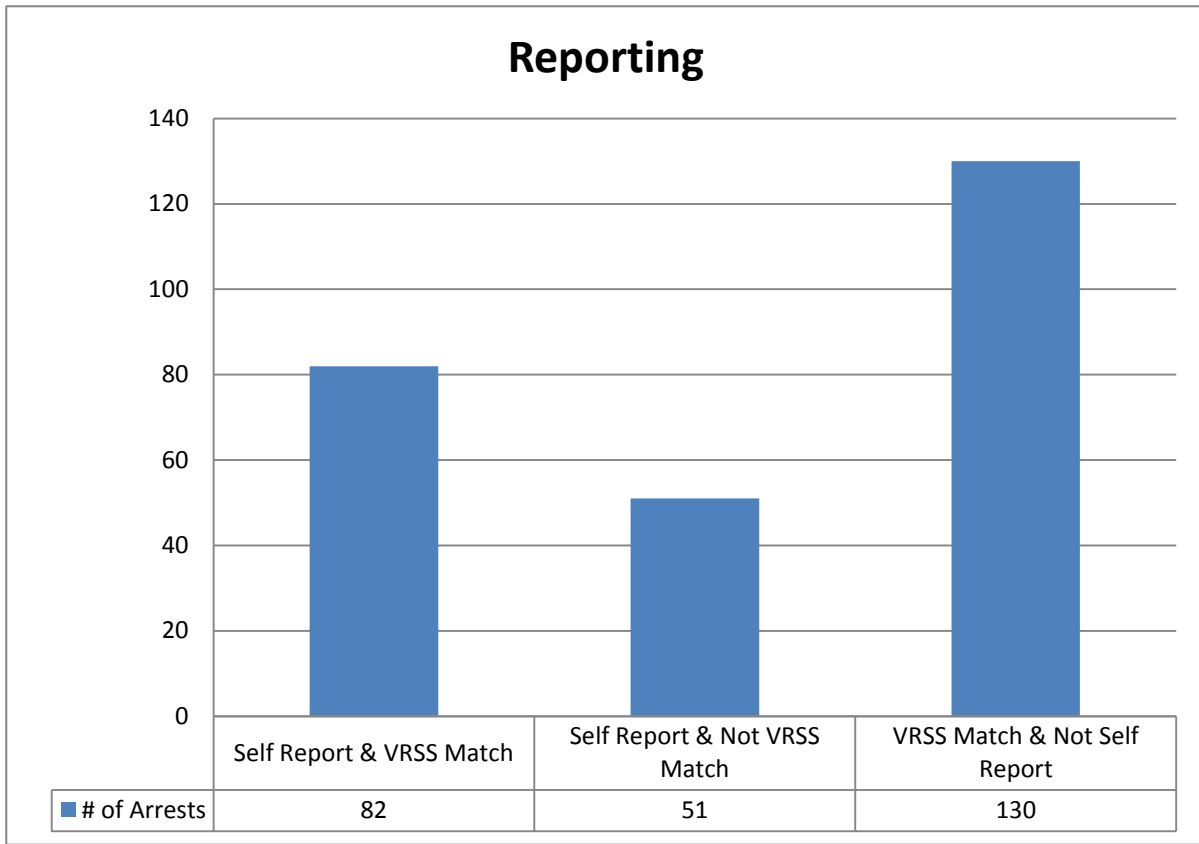
Mental Health Concerns



	Sept 2014	Sept 2015	Sept 2016	Sept 2017
In Jail (atleast one day in month-not total at end of the month)	41	57	56	64
Probation Violations	13	18	10	15
New offenses	23	36	32	39
BF/IB/ATGOB only			8	1
Parole Violations only	2	-	1	1
Other reason in jail	3	3	5	8
Released Since Last Month	16	27	27	36
Released to SAFPF	-	1	-	-
Released to Nexus Recovery	4	2	2	3
Released to state hospital	-	-	-	-
Released to other treatment	1	-	1	-
Released to TDCJ (ID or SJ)	1	3	-	-
Released on Probation	3	5	10	8
Released on bond	1	4	5	14
Released to Other Agencies	1	1	3	3
Released for other Reasons	5	11	6	8
New Cases Since Last in Month	15	26	30	34

Emails To Court Coordinators for settings	3	3	9	4
Email Notifications to Probation	3	3	4	2
Email Notifications to TDCJ desk (Sgt. Temple)	2	2	1	-
Pregnant Patient Interviews for Referral Purposes	-	-	-	-
Nexus Notifications	1	-	1	3

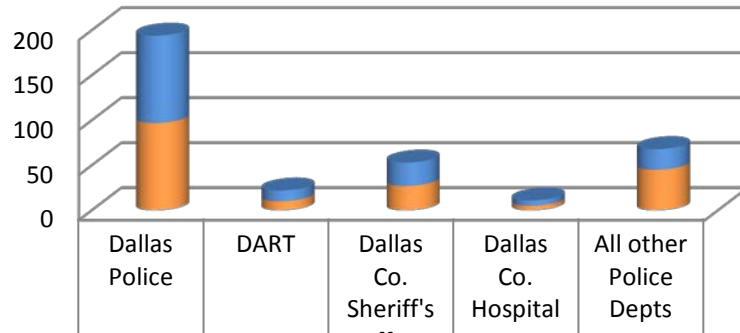




Unique Individuals
 Days In Jail
 Average Number of Days in Jail

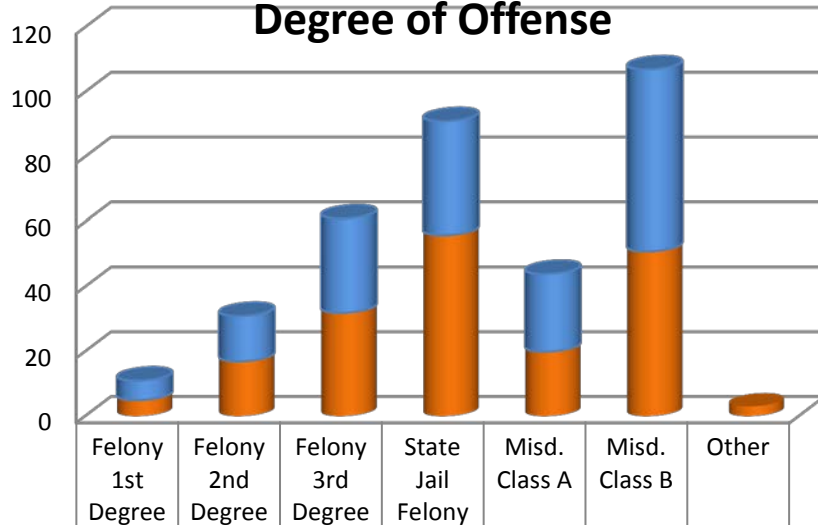
2017
 341
 13,109
 37.67

Arresting Agency



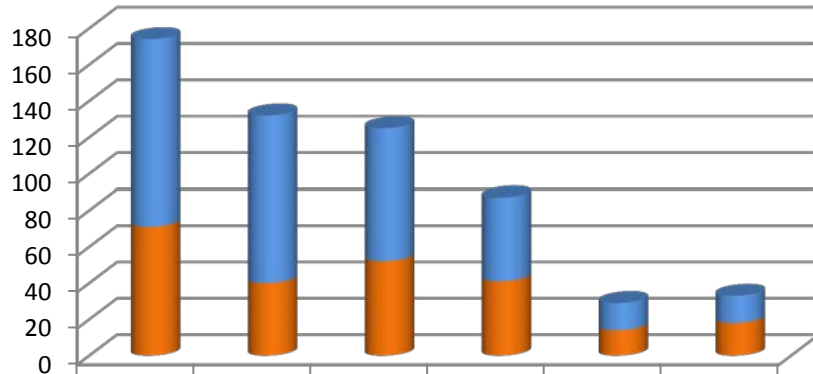
■ Flagged for Mental Health-Yes	97	12	26	6	23
■ Flagged for Mental Health-No	97	10	27	5	45

Degree of Offense



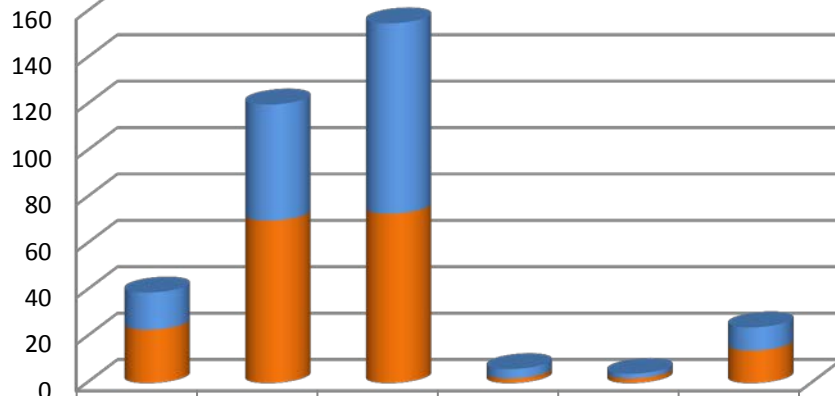
■ Flagged for Mental Health-Yes	6	14	29	35	24	56	
■ Flagged for Mental Health-No	5	17	32	56	20	51	3

Average Days in Jail



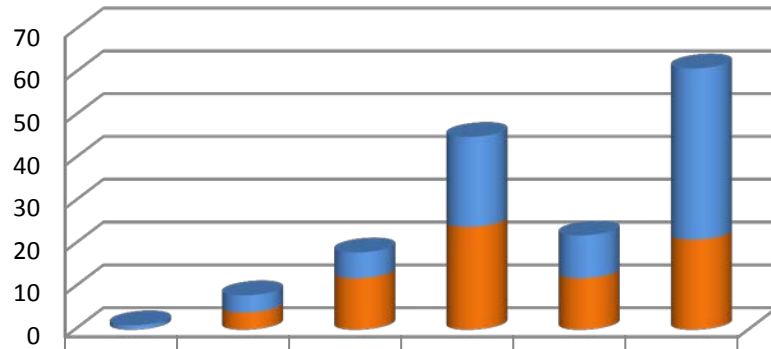
	Felony 1st Degree	Felony 2nd Degree	Felony 3rd Degree	State Jail Felony	Misd. Class A	Misd. Class B
Flagged for Mental Health-Yes	103	92	73	46	15	15
Flagged for Mental Health-No	71	40	52	41	14	18

Attorney Type



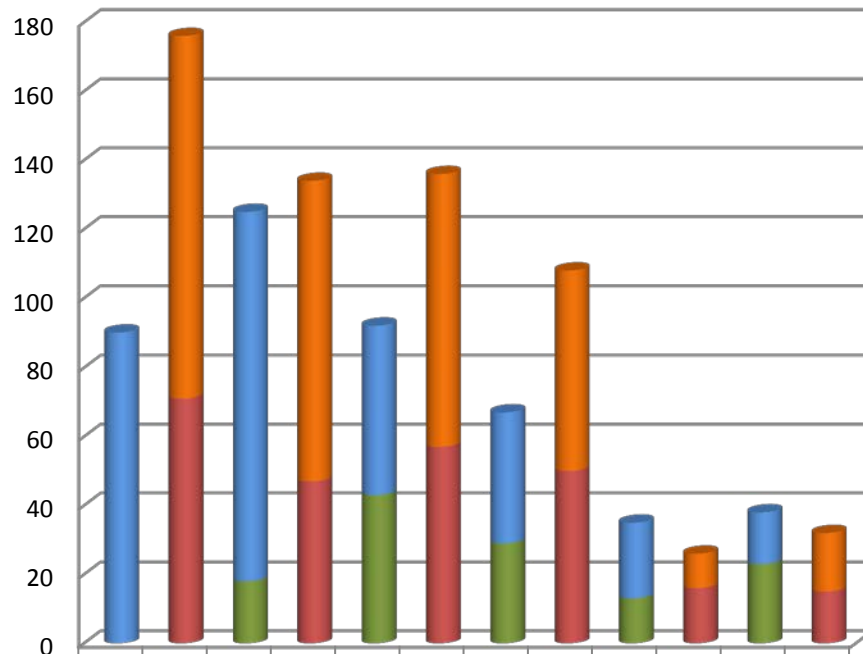
	Adhoc	Wheel	PD	Decline	Retd	Unknown
Flagged for Mental Health-Yes	16	50	82	4	2	10
Flagged for Mental Health-No	23	70	73	2	2	14

Public Defender Degree of Offense



	Felony 1st Degree	Felony 2nd Degree	Felony 3rd Degree	State Jail Felony	Misd. Class A	Misd. Class B
Flagged for Mental Health-Yes	1	4	6	21	10	40
Flagged for Mental Health-No	0	4	12	24	12	21

Average Days in Jail by Attorney Type



	F1	F2	F3	FS	MA	MB
All Other Attorney Types-Y		105	87	79	58	10
All Other Attorney Types-N		71	47	57	50	16
Public Defender Yes-MH	90	107	49	38	22	15
Public Defender No-MH		18	43	29	13	23

2017

Unique Individuals

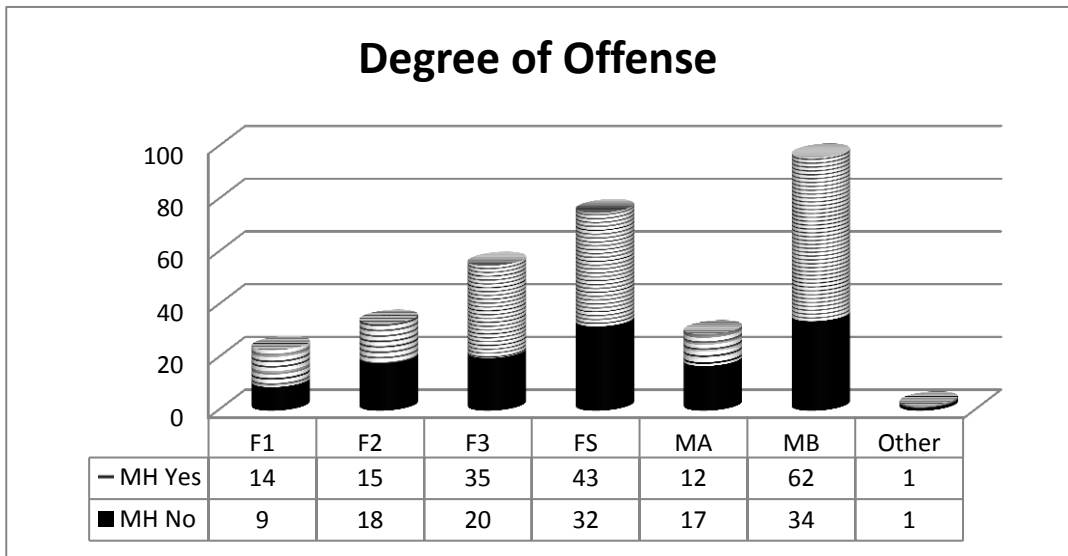
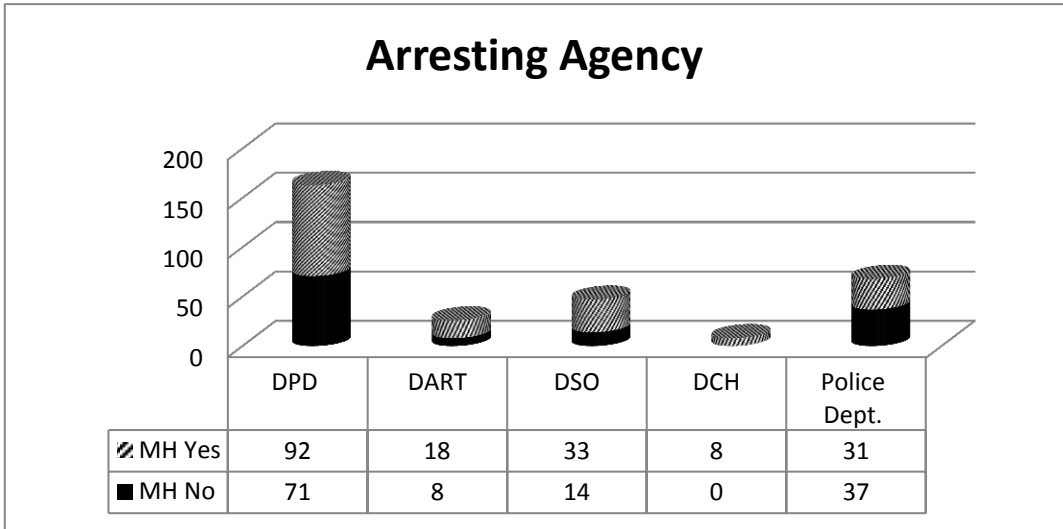
313

Days In Jail

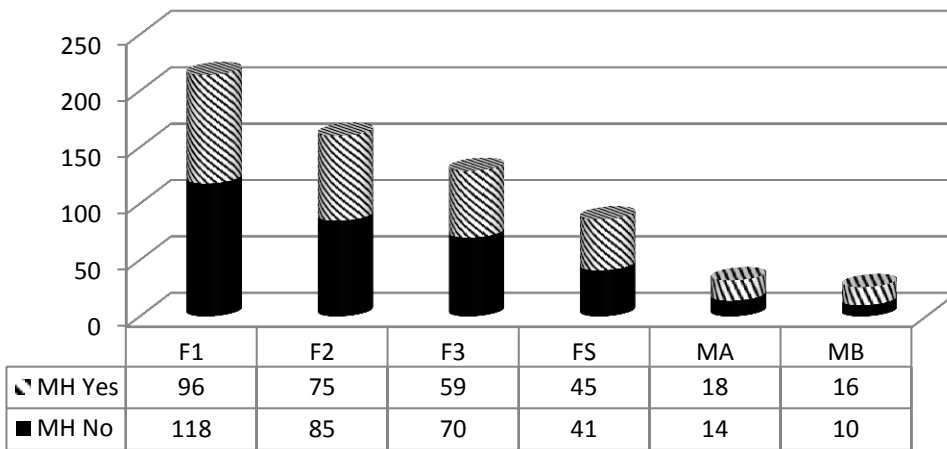
13,602

Average Number of Days in Jail

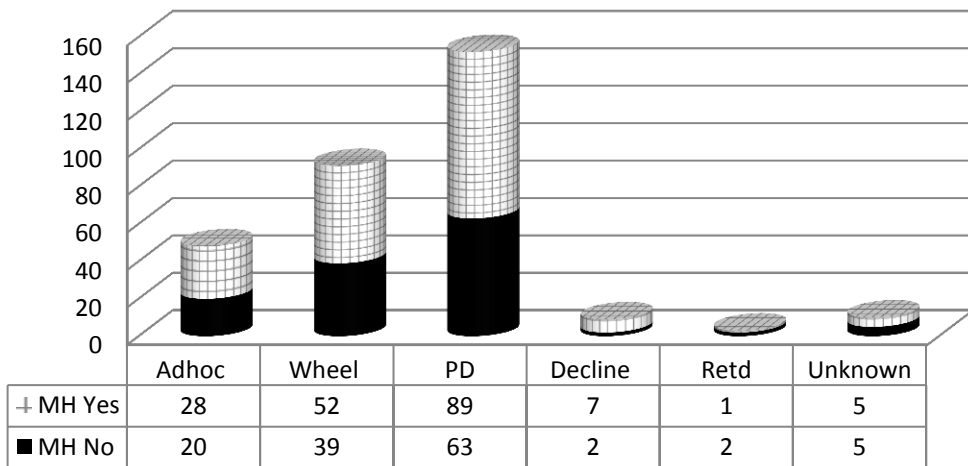
43.46



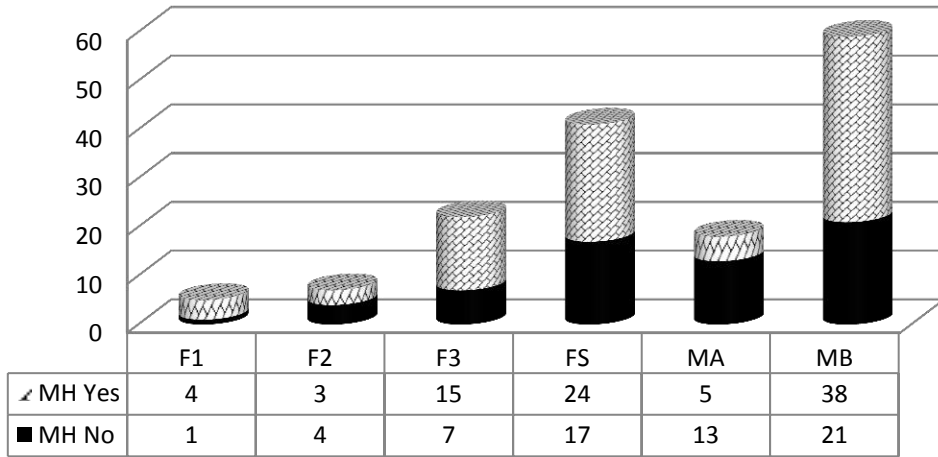
Avg. Days in Jail



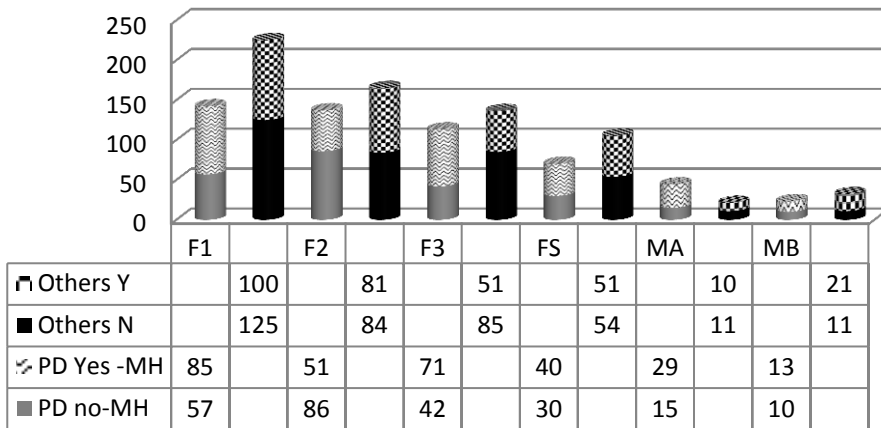
Attorney Type



PD Degree of Offense



Avg. Days in Jail Attorney Type



Monthly NorthSTAR/TLETS Intakes

Month-Year	Total inmates booked into the jail with a NorthStar/TLETS match	Book in Totals for the month	% of people with a NorthStar match booked into the jail
2007 Total	6501	93413	7%
2008 Total	8200	99580	8%
2009 Total	10636	98407	11%
2010 Total	12994	96245	14%
2011 Total	15810	90429	17%
2012 Total	17036	83524	20%
2013 Total	17762	81010	22%
2014 Total	16919	73168	23%
2015 Total	16998	69185	25%
Jan-16	1444	5836	25%
Feb-16	1594	6081	26%
Mar-16	1457	5782	25%
Apr-16	1526	6031	25%
May-16	1461	6028	24%
Jun-16	1523	5913	26%
Jul-16	1266	4891	26%
Aug-16	1487	5884	25%
Sep-16	1433	5534	26%
Oct-16	1294	5201	25%
Nov-16	1299	5100	25%
Dec-16	1188	4818	25%
2016 Total	16972	67099	25%
Jan-17	2760	5585	49%
Feb-17	3839	5442	71%
Mar-17	3731	5903	63%
Apr-17	3486	5533	63%
May-17	3623	5896	61%
Jun-17	3336	5537	60%
Jul-17	3404	5615	61%
2017 Total	24179	39511	61%

*As of January 2017, the TLETS feed was included in the MH match data to the BOT impacting the overall percentage.

Multi-Bookin NorthSTAR Tracking

2017	# Times Booked In	# Unique Clients
	Bookins 9	2
	Bookins 8	0
	Bookins 7	12
	Bookins 6	14
	Bookins 5	52
	Bookins 4	119
	Bookins 3	447
	Bookins 2	2516
	Bookins 1	17633
Total		20795
As of 8/7/17		

Monthly NorthSTAR/TLETS Intakes

Month-Year	Total inmates booked into the jail with a NorthStar/TLETS match	Book in Totals for the month	% of people with a NorthStar match booked into the jail
2007 Total	6501	93413	7%
2008 Total	8200	99580	8%
2009 Total	10636	98407	11%
2010 Total	12994	96245	14%
2011 Total	15810	90429	17%
2012 Total	17036	83524	20%
2013 Total	17762	81010	22%
2014 Total	16919	73168	23%
2015 Total	16998	69185	25%
Jan-16	1444	5836	25%
Feb-16	1594	6081	26%
Mar-16	1457	5782	25%
Apr-16	1526	6031	25%
May-16	1461	6028	24%
Jun-16	1523	5913	26%
Jul-16	1266	4891	26%
Aug-16	1487	5884	25%
Sep-16	1433	5534	26%
Oct-16	1294	5201	25%
Nov-16	1299	5100	25%
Dec-16	1188	4818	25%
2016 Total	16972	67099	25%
Jan-17	2760	5585	49%
Feb-17	3839	5442	71%
Mar-17	3731	5903	63%
Apr-17	3486	5533	63%
May-17	3623	5896	61%
Jun-17	3336	5537	60%
Jul-17	3404	5615	61%
Aug-17	3677	5784	64%
2017 Total	27856	45295	61%

*As of January 2017, the TLETS feed was included in the MH match data to the BOT impacting the overall percentage.

Multi-Bookin NorthSTAR Tracking

2017	# Times Booked In	# Unique Clients
	Bookins 25	1
	Bookins 10	3
	Bookins 9	0
	Bookins 8	6
	Bookins 7	13
	Bookins 6	20
	Bookins 5	67
	Bookins 4	164
	Bookins 3	626
	Bookins 2	3123
	Bookins 1	19577
Total		23600
As of 9/11/17		

HARRY INGRAM		FY2017 ATLAS STATISTICS										203/HAWTHORNE					
MONTH	BEGINNING # OF PENDING CASES	+NEW CASES RECEIVED THIS MONTH	=TOTAL CASES	TBJ	TBC	PLEAS	REV	GRADUATES	PROBATION MODIFICATIONS	DISMISSALS	OTHERS	TOTAL DISPOSITIONS	ENDING # PENDING CASES **	CURRENT ATLAS PARTICIPANTS	CURRENT PARTICIPANTS IN CUSTODY	FORMER ATLAS PARTICIPANTS	BOND
August	17	11	28	0	0	0	1	1	0	0	0	2	26	20	1	0	19

HARRY INGRAM		FY2017 MISDEMEANOR MENTAL HEALTH COURT STATS										CCCAP1/WADE				
MONTH	BEGINNING # OF PENDING CASES	Rediverts	+NEW CASES RECEIVED THIS MONTH	=TOTAL CASES	TBJ	TBC	PLEAS	DISMISSAL	OTHER	TOTAL DISPOSITIONS	ENDING # PENDING CASES **	CURRENT PARTICIPANTS	NUMBER OF GRADUATES	BOND***		
August	127	0	9	136	0	0	8	2	2	12	124	29	2	29		

HARRY INGRAM		FY2017 S.E.T. STATISTICS										291st					
MONTH	BEGINNING # OF PENDING CASES	+NEW CASES RECEIVED THIS MONTH	=TOTAL CASES	TBJ	TBC	PLEAS	REV	GRADUATES	PROBATION MODIFICATIONS	DISMISSALS	OTHERS	TOTAL DISPOSITIONS	ENDING # PENDING CASES **	CURRENT PARTICIPANTS	CURRENT PARTICIPANTS IN CUSTODY	FORMER PARTICIPANTS	BOND
August	53	0	53	0	0	0	0	0	0	3	4	7	46	20	1	0	19

August		FY2017 MHPD STATS										
MONTH	BEGINNING # OF PENDING CASES	+NEW CASES RECEIVED THIS MONTH	=TOTAL CASES	TRIALS	PLEAS	COND. DISM.	REVO-CATION	DISMISSALS	INCOMPETENT	REFERRALS	OTHER COUNSEL APPT.	TOTAL CLOSED
R. LENOX	183	30	213	2	13	3	1	5	0	0	1	25
L. TAYLOR	189	15	204	0	0	0	1	1	0	0	3	5

MALCOM HARDEN		FY2017 FELONY COMPETENCY STATISTICS														
	BEGINNING # OF CASES	NEW CASES THIS MONTH	TBJ	TBC	Alt. Trial Dispos.	PLEAS	REVO-CATIONS	DISMISSALS	PROBATION	COMP. HRG.	EXTENSIONS	CIVIL COMMIT.	MHMR REFERRAL	CONSULTS	OTHER	ENDING # OF PEOPLE IN OCR
August	165	13	0	0	0	2	1	3	0	8	4	0	1	0	7	14

MALCOM HARDEN		FY2017 MISDEMEANOR COMPETENCY STATISTICS														
MONTH	BEGINNING # OF CASES	NEW CASES THIS MONTH	TBJ	TBC	Alt. Trial Dispos.	PLEAS	REVO-CATIONS	DISMISSALS	PROBATION	COMP. HRG.	EXTENSIONS	CIVIL COMMIT.	MHMR REFERRAL	CONSULTS	OTHER	ENDING # OF PEOPLE IN OCR
August	125	48	0	0	0	0	0	28	0	20	9	1	0	0	4	19

August		MI Court																
MONTH	TOTAL NEW CASES RECEIVED	NEW CLIENTS AT GREEN OAKS	NEW CLIENTS AT MEDICAL CENTER MCKINNEY	NEW CLIENTS AT PARKLAND	NEW CLIENTS AT DALLAS BEHAVIORAL HEALTH	NEW CLIENTS AT GARLAND AND BEHAVIORAL	NEW CLIENTS AT ZALE LIPSHY	NEW CLIENTS AT SUNDANCE BEHAVIORAL HEALTHCARE	NEW CLIENTS AT HICKORY TRAILS	NEW CLIENTS AT METHO DIST RICHARDSON	NEW CLIENTS AT DALLAS PRESBYTERIAN	NEW CLIENTS AT VA	NEW CLIENTS AT WELLB RIDGE	NEW CLIENTS AT TIMBER LAWN	PROBABLE CAUSE HEARINGS HELD	NO CONTEST COMMIT	CONTESTED COMMIT	FORCED MEDS HEARING IN COURT
L. ROBERTS	185	64	10	0	0	21	0	54	0	14	0	0	0	22	3	1	7	8
L. TAYLOR	95	0	0	23	19	9	7	31	5	0	1	0	0	0	3	0	2	2

RANDA BLACK		MI COURT							*Number of new cases decreased due to increase in 46B cases.	
MONTH	NEW CLIENTS	PROBABLE CAUSE HEARINGS HELD	NO CONTEST COMMIT TO TSH	CONTESTED COMMIT TO TSH	RECOMMITMENTS	MEDICATION HEARINGS	OUTPATIENT	JURY TRIAL		
August	20	2	3	17	8	22	0	0		

MICHAELA HIMES		MHPR BOND STATS			
MONTH	INITIAL ELIGIBILITY DAILY LIST	MHPR BOND APPOINTMENTS FROM DAILY LIST	MHPR BOND HEARING GRANTED	MHPR BOND HEARING DENIED	TOTAL HEARINGS
August	1699	225	68	11	79

HARRY INGRAM		FY2017 ATLAS STATISTICS										203/HAWTHORNE					
MONTH	BEGINNING # OF PENDING CASES	+NEW CASES RECEIVED THIS MONTH	=TOTAL CASES	TBJ	TBC	PLEAS	REV	GRADUATES	PROBATION MODIFICATIONS	DISMISSALS	OTHERS	TOTAL DISPOSITIONS	ENDING # PENDING CASES **	CURRENT ATLAS PARTICIPANTS	CURRENT PARTICIPANTS IN CUSTODY	FORMER ATLAS PARTICIPANTS	BOND
September	26	7	33	0	0	0	0	0	0	0	4	4	29	22	0	0	0

HARRY INGRAM		FY2017 MISDEMEANOR MENTAL HEALTH COURT STATS										CCCAP1/WADE			
MONTH	BEGINNING # OF PENDING CASES	Rediverts	+NEW CASES RECEIVED THIS MONTH	=TOTAL CASES	TBJ	TBC	PLEAS	DISMISSAL	OTHER	TOTAL DISPOSITIONS	ENDING # PENDING CASES **	CURRENT PARTICIPANTS	NUMBER OF GRADUATES	BOND***	
September	124	0	5	129	0	0	3	0	7	10	119	26	0	26	

HARRY INGRAM		FY2017 S.E.T. STATISTICS										291st					
MONTH	BEGINNING # OF PENDING CASES	+NEW CASES RECEIVED THIS MONTH	=TOTAL CASES	TBJ	TBC	PLEAS	REV	GRADUATES	PROBATION MODIFICATIONS	DISMISSALS	OTHERS	TOTAL DISPOSITIONS	ENDING # PENDING CASES **	CURRENT PARTICIPANTS	CURRENT PARTICIPANTS IN CUSTODY	FORMER PARTICIPANTS	BOND
September	46	1	0	0	0	0	0	0	0	0	1	1	46	20	0	0	20

September		FY2017 MHPD STATS										
MONTH	BEGINNING # OF PENDING CASES	+NEW CASES RECEIVED THIS MONTH	=TOTAL CASES	TRIALS	PLEAS	COND. DISM.	REVO-CATION	DISMISSALS	INCOMPETENT	REFERRALS	OTHER COUNSEL APPT.	TOTAL CLOSED
R. LENOX	188	28	216	2	6	5	5	1	0	0	9	28
L. TAYLOR	199	20	219	1	2	1	1	0	0	0	0	5

MALCOM HARDEN		FY2017 FELONY COMPETENCY STATISTICS														
	BEGINNING # OF CASES	NEW CASES THIS MONTH	TBJ	TBC	Alt. Trial Dispos.	PLEAS	REVO-CATIONS	DISMISSALS	PROBATION	COMP. HRG.	EXTENSIONS	CIVIL COMMIT.	MHMR REFERRAL	CONSULTS	OTHER	ENDING # OF PEOPLE IN OCR
September	164	14	0	0	0	1	0	1	0	2	0	0	1	0	0	15

MALCOM HARDEN		FY2017 MISDEMEANOR COMPETENCY STATISTICS														
MONTH	BEGINNING # OF CASES	NEW CASES THIS MONTH	TBJ	TBC	Alt. Trial Dispos.	PLEAS	REVO-CATIONS	DISMISSALS	PROBATION	COMP. HRG.	EXTENSIONS	CIVIL COMMIT.	MHMR REFERRAL	CONSULTS	OTHER	ENDING # OF PEOPLE IN OCR
September	140	22	0	0	0	2	0	22	0	18	4	1	0	0	0	18

September		MI Court																
MONTH	TOTAL NEW CASES RECEIVED	NEW CLIENTS AT GREEN OAKS	NEW CLIENTS AT MEDICAL CENTER MCKINNEY	NEW CLIENTS AT PARKLAND	NEW CLIENTS AT DALLAS BEHAVIORAL HEALTH	NEW CLIENTS AT GARLAND AND BEHAVIORAL	NEW CLIENTS AT ZALE LIPSHY	NEW CLIENTS AT SUNDANCE BEHAVIORAL HEALTHCARE	NEW CLIENTS AT HICKORY TRAILS	NEW CLIENTS AT METHO DIST RICHARDSON	NEW CLIENTS AT DALLAS PRESBYTERIAN	NEW CLIENTS AT VA	NEW CLIENTS AT WELLS RIDGE	NEW CLIENTS AT TIMBER LAWN	PROBABLE CAUSE HEARINGS HELD	NO CONTEST COMMIT	CONTESTED COMMIT	FORCED MEDS HEARING IN COURT
L. ROBERTS	131	82	6	0	0	7	0	25	0	5	0	0	0	5	3	0	8	7
L. TAYLOR	64	0	0	10	15	4	6	23	6	0	0	0	0	0	0	1	2	2
R. BLACK	19	0	0	0	18	0	0	0	9	0	0	0	0	0	1	0	0	0

RANDA BLACK		MI COURT							*Number of new cases decreased due to increase in 46B cases.		
MONTH	NEW CLIENTS	PROBABLE CAUSE HEARINGS HELD	NO CONTEST COMMIT TO TSH	CONTESTED COMMIT TO TSH	RECOMMITMENTS	MEDICATION HEARINGS	OUTPATIENT	JURY TRIAL			
September	17	1	3	7	1	5	0	0			

MICHAELA HIMES		MHPR BOND STATS			
MONTH	INITIAL ELIGIBILITY DAILY LIST	MHPR BOND APPOINTMENTS FROM DAILY LIST	MHPR BOND HEARING-GRANTED	MHPR BOND HEARING-DENIED	TOTAL HEARINGS
September	1440	188	62	5	67

Personal Stats - Felony Cases Only

Prosecutor		Hire Date															Court	
Patrick Cryer		2/20/2016															MENTAL HEALTH	
2017 Term	Jury Leads*	Jury Picks	Non-Jury Trials	Pleas	Dism	CD-Priv.	CD-P.D.	CD check-in	OCR check-in	Ref. SET	SET Acpt	NGRI-IP Hear	OP check-in	Comp Hear	Total Dispos	List Pending Cases Assigned to you		
																App'd	Unapp'd	
January				23	5	9	4	3							28			
February				11	10	6	6	4							21			
March				19	4	2	4	5		2					23			
January Term Total																153		
April				10	4	4	7	9		6					14			
May	1			14	4	5	6	9		4					18			
June			1	16	7	4	0	10		5					24			
April Term Total																170		
July				12	4	3	4	13		3					16			
August			2	10	6	8	2	16		2					20			
September				16	10	10	10	16		5					26			
July Term Total																190		
October																		
November																		
December																		
October Term Total																		
Y-T-D Total	1	0	3	131	54	51	43	85		27					190			

Please Note: *Do Not Include Picks In Total Dispositions - Do Not Include Sanity Trials in Leads

List 2017 Jury Trials

Defendant	Offense	Verdict											Trial Date	Sentence
Curtis Davis	Agg Robbery	Guilty											5/1/2017	6 months

Personal Stats - Felony Cases Only

Prosecutor		Hire Date														Co	
Shelley Fox		10/6/2005														MENTAL	
2017 Term	Jury Leads*	Jury Picks	Non-Jury Trials	Pleas	Dism	CD-Priv.	CD-P.D.	CD check-in	OCR check-in	Ref. SET	SET Acpt	NGRI-IP Hear	OP check-in	Comp Hear	Total Dispos	List Pending Cases Assigned to you	
January				16											16	App'd	Unapp'd
February			3	24	2			5							34		
March				17	1			4							22		
January Term Total			3	57	3			9							72	104	
April			1	10				3							14		
May				7	1			9							18		
June			1	9	1			1							12		
April Term Total			2	26	2			5	9						44	98	
July				13				3	1						17		
August				17	2										19		
September				3				1	1						5		
July Term Total															41		
October																	
November																	
December																	
October Term Total																	
Y-T-D Total																	

Please Note: *Do Not Include Picks In Total Dispositions - Do Not Include Sanity Trials in Leads

List 2017 Jury Trials

Defendant	Offense	Verdict												Trial Date	Sent

Personal Stats - Felony Cases Only

Prosecutor		Hire Date												
Kendall McKimney		2/11/2013												
2017 Term	Jury Leads*	Jury Picks	Non-Jury Trials	Pleas	Dism	CD-Priv.	CD-P.D.	CD check-in	OCR check-in	Ref. SET	SET Acpt	NGRI-IP Hear	OP check-in	Comp Hear
January			2					5	32			4	7	56
February														
March														
January Term Total			2					5	32			4	7	56
April					1			5				1	1	35
May					6			2	25			10	11	56
June					6			4	24			4	12	59
April Term Total					13			6	54			15	24	150
July					2			1	22			6	5	59
August					2			1	30			0	6	80
September					2			1	23			3	0	63
July Term Total					6			3	75			9	11	202
October														
November														
December														
October Term Total														
Y-T-D Total	0	0	2	0	19	0	0	14	161	0	0	28	42	408

Please Note: *Do Not Include Picks In Total Dispositions - Do Not Include Sanit

List 2017 Jury Trials

Defendant	Offense	Verdict												

		Court	
		MENTAL HEALTH	
Total Dispos	List Pending Cases Assigned to you		
0 (maternity leave starting 1/25)	App'd	Unapp'd	
maternity leave			
maternity leave	413		
0			
1 (maternity leave till 4/19)			
6			
6	416		
13			
2			
2			
2	435		
6			
19			

y Trials in Leads

Trial Date	Sentence

Personal Stats - Misd Cases Only

Prosecutor		Hire Date															Court	
Kinsey Stango		4/21/2015															MENTAL HEALTH	
2017 Term	Jury Leads*	Jury Picks	Non-Jury Trials	Pleas	Dism	CD-Priv.	CD-P.D.	CD check-in	OCR check-in	JIMI BOT Evals	NGRI-IP	NGRI-OP	Comp Hear	Traffic	Total Dispos	List Pending Cases Assigned to you		
January				2	26			1	29				1	20	30	58	App'd	Unapp'd
February				1	33			2	37				1	17	1100	1134		
March				5	24				39				1	17	900	915		
January Term Total																		
April				1	24				40				1	27	1261	1160		
May				4	35				42				1	36	729	680		
June				3	17				46				1	27	1265	1160		
April Term Total																		
July				0	12				33					19	781	730		
August				1	32				43					33	1105	1050		
September				4	37				24					34	941			
July Term Total																		
October															963			
November															560			
December				1	34				22					35	870	885		
October Term Total																		
Y-T-D Total																		

Please Note: *Do Not Include Picks In Total Dispositions - Do Not Include Sanity Trials in Leads

List 2017 Jury Trials

Defendant	Offense	Verdict												Trial Date	Sentence

The Bridge	2016	2016	2016	2017	2017	2017	2017	2017	2017	2017	2017	2017	2017
	Oct.	Nov.	Dec.	Jan.	Feb.	Mar.	April	May	June	July	August	Sept.	AVG.
Bridge Night Shelter	451	433	433	451	410	427	426	445	471	427	431	436	437
Off-site Night Shelter Coordination	536	489	525	545	527	489	485	472	498	531	482	448	502
Care Coordination	728	715	936	1061	933	980	875	1009	1053	1034	1024	968	943
Peer Support Services	116	141	213	308	402	335	358	488	429	393	232	263	307
Job Placements	43	14	22	29	17	32	20	33	33	39	24	26	28
Housing Placements	32	28	17	28	30	21	20	19	11	20	47	31	25
Metrocare Mental Health Serv.	388	338	347	377	246	373	331	343	355	349	345	326	343
Metrocare Chemical Dep. Serv.	23	21	28	14	19	16	13	18	18	17	14	17	18
Parkland Clinic*	798	692	618	702	676	676	638	796	698	670	703	661	694
VA Services	18	15	13	20	7	1	11	17	23	18	28	7	15
Judicial Re-Entry	5	3	2	6	6	4	3	5	3	3	3	3	4
Jail Release (General)	12	11	17	16	20	16	28	31	25	18	20	16	19

Each category represents *unduplicated guests* , not totals served.

*exception - Parkland Clinic number is for total visits.

NAME OF MHMR PROGRAM: Metrocare Services
PROGRAM: SNOP

MONTH OF REPORT:8_2017

DATE SUBMITTED: 8_2017

	ATLAS	Post-DDRTC	STAC	Misd.	PRIDE	DDRTC	PROBATION ICM	PAROLE ICM
1. Number of Offenders served at the beginning of the month:	12	38	21	25	2	60	67	80
2. Number of Referrals received:	1	8	1	4	1	9	0	2
3. Number of Assessments:	1	8	1	4	1	12	0	62
4. Number of Admissions:	1	8	1	4	1	12	0	2
5. Average length of stay by months:	1.78	2.35	3.1	2.01	1.35	n/a	3.23	3.35
5. a. Average hours served:	5.72	4.71	4.37	6.27	4.67	n/a	4.75	5.37
6. Services Utilized:	0	0	0	0	0	4	0	0
6. a. Visits to ER (medical)	0	0	0	0	0	0	0	0
6. b. 23-hour Observation (psych)	0	0	0	0	0	3	0	1
6. c. Inpatient Stay (med/psych)	0	0	0	0	0	1	0	0
6. d. Jail days less than 30 days:	0	0	0	0	0	0	1	2
7. Number of Discharges:	1	4	4	11	0	13	2	5
7. a. Terminations (jail more than 30days)	0	1	2	6	0	0	0	3
7. b. Warrants/Suspension: (medical d.c.; abscond)	0	1	0	3	0	2	0	1
7. c. Graduates	1	2	0	2	0	11	2	1
8. Number of Offenders served at the end of month:	12	42	18	18	3	59	65	77
9. Number of Offenders on the waiting list:	0	0	0	0	0	4	0	0
10. Minimum/Maximum Census per FTE allocation	20-25	30-38	30-38	30-38	10-12	72	100-125	100-125
11. % of FTE Assigned	1	1.5	1.5	1.5	0.5		5	5
12. Vacancy(s)	0	0	0	0	0	0	2	0

Each FTE covers 20-25

NAME OF MHMR PROGRAM: Metrocare Services
PROGRAM: SNOP

MONTH OF REPORT:9_2017

DATE SUBMITTED: 9_2017

	ATLAS	Post-DDRTC	STAC	Misd.	PRIDE	DDRTC	PROBATION ICM	PAROLE ICM
1. Number of Offenders served at the beginning of the month:	12	42	18	18	3	59	65	77
2. Number of Referrals received:	9	2	4	7	0	23	6	10
3. Number of Assessments:	9	2	4	7	0	19	6	10
4. Number of Admissions:	9	2	4	7	0	19	6	10
5. Average length of stay by months:	1.85	2.06	3.34	2.15	1.85		3.42	3.45
5. a. Average hours served:	3.28	4.76	1.54	5.98	3		3.15	4.61
6. Services Utilized:	0	0	0	0	0	2	0	0
6. a. Visits to ER (medical)	0	0	0	0	0	0	0	0
6. b. 23-hour Observation (psych)	0	0	0	0	0	2	2	0
6. c. Inpatient Stay (med/psych)	0	0	0	0	0	0	0	0
6. d. Jail days less than 30 days:	0	0	0	0	0	0	2	2
7. Number of Discharges:	1	12	1	4	1	27	6	10
7. a. Terminations (jail more than 30days)	1	1	1	3	0	0	2	1
7. b. Warrants/Suspension: (medical d.c.; abscond)	0	2	0	1	0	16	1	3
7. c. Graduates	0	9	0	0	0	11	1	2
8. Number of Offenders served at the end of month:	20	32	18	21	2	51	65	77
9. Number of Offenders on the waiting list:	0	0	0	0	0	7	0	0
10. Minimum/Maximum Census per FTE allocation	20-25	30-38	30-38	30-38	10-12	60	90-115	90-115
11. % of FTE Assigned	1	1.5	1.5	1.5	0.5		4.5	4.5
12. Vacancy(s)	0	0	0	0	0	0	1.5	1.5

Each FTE covers 20-25

Outpatient Competency Restoration Monthly Totals														
	Jan	Feb	Mar	April	May	June	July	Aug	Sept	Oct	Nov	Dec	Total	2016 Total
Beginning of Month	41	40	40	37	41	44	45	42	40	38	38	0		
Misdemeanor	11	16	16	18	20	22	20	21	18	18				
Placed in OCR	9	4	7	4	8	5	4	5	7				53	65
Homeless @ admit	5	3	3	2	5	3	0	3	5				29	37
Dispo	4	4	5	2	6	7	3	8	7				46	76
Outpatient to Inpatient	2	2	3	0	3	2	2	3	1				18	20
Abscond	1	0	1	2	0	2	0	0	1				7	12
Restored and Resolved	0	2	1	0	3	2	1	1	3				13	33
Not restored -- Dismissed	1	0	0	0	0	1	0	4	2				8	11
Felony	30	24	24	19	21	22	25	21	22	20				
Placed in OCR	5	3	1	4	3	7	1	4	2				30	52
Homeless @ admit	2	0	0	1	1	2	0	2	1				9	28
Dispo	11	3	6	2	2	4	5	3	4				40	42
Outpatient to Inpatient	2	0	2	0	0	0	4	1	1				10	20
Abscond	4	1	1	1	1	2	1	0	1				12	11
Restored	4	0	2	1	0	2	0	2	2				13	7
Not restored -- Dismissed	1	2	1	0	1	0	0	0	0				5	4
End of Month	40	40	37	41	44	45	42	40	38	38	0	0	405	

DIVERT COURT FY17

FY2017	Start of Month	New admissions	DAOpt-out	Unsuccessful discharge	Graduates	INS deportation	End of Month
Sept. 16	151	6	0	2	7		148
Oct. 16	148	5	0	6	7		140
Nov. 16	140	12	0	6	0		146
Dec. 16	146	13	0	1	6		152
Jan. 17	152	6	2	4	5		147
Feb. 17	147	6	0	6	3		144
Mar. 17	144	9	0	4	13		136
Apr. 17	136	9	1	0	10		134
May. 17	134	14	0	5	8	1	134
Jun. 17	134	15	0	9	7		133
Jul. 17	133	4	0	4	4	3	126
Aug. 17	126	10	0	4	10		122
total		109	3	51	80	4	

DIVERT COURT FY18

FY2018	Start of Month	New admissions	DAOpt-out	Unsuccessful discharge	Graduates	INS deportation	End of Month
Sept. 17	122	5	0	2	11		114
Oct. 17							
Nov. 17							
Dec. 17							
Jan. 18							
Feb. 18							
Mar. 18							
Apr. 18							
May. 18							
Jun. 18							
Jul. 18							
Aug. 18							
total		5	0	2	11	0	

ATLAS Court

FY17	Start of Month	New admissions	DA Opt-out	Unsuccessful discharge	Graduates	End of Month
Sept. 16	28	0	0	2	0	26
Oct. 16	26	4	0	1	0	29
Nov. 16	29	1	0	1	0	29
Dec. 16	29	1	0	2	0	28
Jan. 17	28	6	0	1	3	30
Feb. 17	20	2	0	1	0	21
Mar. 17	21	1	0	0	3	19
Apr. 17	19	1	0	0	0	20
May-17	20	5	0	1	5	19
Jun. 17	16	2	0	0	0	18
Jul. 17	14	2	0	0	0	16
Aug. 17	16	7	0	0	1	22

* Denotes that numbers are slightly lower due to missing data.

ATLAS Court

FY18	Start of Month	New admissions	DA Opt-out	Unsuccessful discharge	Graduates	End of Month
Sept. 17	22	6	0	0	0	28
Oct. 17						
Nov. 17						
Dec. 17						
Jan. 18						
Feb. 18						
Mar. 18						
Apr. 18						
May. 18						
Jun. 18						
Jul. 18						
Aug. 18						

* Denotes that numbers are slightly lower due to missing data.

DDAC Court

FY17	Start of Month	New admissions	DA Opt-out	Unsuccessful discharge	Graduates	End of Month
Sept. 16	43	10	0	4	0	49
Oct. 16	49	8	0	2	4	51
Nov. 16	51	4	0	5	0	50
Dec. 16	50	5	0	0	0	55
Jan. 17	55	9	0	0	7	57
Feb. 17	31	8	0	5	0	34
Mar. 17	34	9	0	3	0	40
Apr. 17	40	6	0	4	7	35
May-17	35	6	0	0	0	41
Jun. 17	37	3	0	0	8	32
Jul. 17	31	1	0	1	0	31
Aug. 17	31	8	0	2	0	37

* Denotes that numbers are slightly lower due to missing data.

DDAC Court

FY18	Start of Month	New admissions	DA Opt-out	Unsuccessful discharge	Graduates	End of Month
Sept. 17	36	6	0	3	9	30
Oct. 17						
Nov. 17						
Dec. 17						
Jan. 18						
Feb. 18						
Mar. 18						
Apr. 18						
May-18						
Jun. 18						
Jul. 18						
Aug. 18						

* Denotes that numbers are slightly lower due to missing data.

MMH Court

FY15	Start of Month	New admissions	DA Opt-out	Unsuccessful discharge	Graduates	End of Month
Total		81		43	64	
Ave. Per Month		6.75		3.58333333	5.33333333	

FY17	Start of Month	New admissions	DA Opt-out	Unsuccessful discharge	Graduates	End of Month
Sept. 16	63	11	0	2	2	70
Oct. 16	70	7	0	0	7	70
Nov. 16	70	5	0	1	0	74
Dec. 16	74	1	0	1	3	71
Jan. 17	71	8	0	2	1	76
Feb. 17	36	8	0	9	3	32
Mar. 17	32	8	0	3	4	33
Apr. 17	33	5	0	7	3	28
May-17	28	4	0	2	2	28
Jun. 17	28	7	0	0	2	36
Jul. 17	36	7	0	4	1	38
Aug. 17	38	4	0	5	2	35

MMH Court

FY18	Start of Month	New admissions	DA Opt-out	Unsuccessful discharge	Graduates	End of Month
Sept. 17	35	5	0	8	0	32
Oct. 17						
Nov. 17						
Dec. 17						
Jan. 18						
Feb. 18						
Mar. 18						
Apr. 18						
May-18						
Jun. 18						
Jul. 18						
Aug. 18						

STAC COURT

FY17	Start of Month	New Admissions	Unsuccessful discharges*	Graduates	End of Month
Sep. 16	141	17	5	16	137
Oct. 16	137	15	3	0	149
Nov. 16	149	21	2	15	144
Dec. 16	144	11	1	0	152
Jan. 17	152	13	7	0	153
Feb. 17	153	18	6	23	169
Mar. 17	169	14	12	0	157
Apr. 17	157	14	11	0	158
May. 17	158	16	9	28	142
Jun. 17	142	12	8	0	145
Jul. 17	145	12	5	0	149
Aug. 17	149	15	5	21	138

FY17	MH Current	MH admissions	MH discharges	Graduates	End of Month
Sep. 16	34	4	3	3	32
Oct. 16	37	5	1	0	41
Nov. 16	35	3	4	1	33
Dec. 16	33	2	3	0	32
Jan. 17	32	2	1	0	35
Feb. 17	35	3	2	6	29
Mar. 17	29	6	1	0	34
Apr. 17	34	5	0	0	39
May. 17	39	6	5	6	32
Jun. 17	32	3	6	0	32
Jul. 17	32	5	1	0	35
Aug. 17	35	3	2	3	33

*Unsuccessful discharges are those who absconded or were sent to their COJ for further treatment.

STAC COURT

FY18	Start of Month	New Admissions	Unsuccessful discharges*	Graduates	End of Month
Sep. 17	138	11	10	0	150
Oct. 17					
Nov. 17					
Dec. 16					
Jan. 18					
Feb. 18					
Mar. 18					
Apr. 18					
May. 18					
Jun. 18					
Jul. 18					
Aug. 18					

FY18	MH Current	MH admissions	MH discharges	Graduates	End of Month
Sep. 17	33	7	2	0	34
Oct. 17					
Nov. 17					
Dec. 16					
Jan. 18					
Feb. 18					
Mar. 18					
Apr. 18					
May. 18					
Jun. 18					
Jul. 18					
Aug. 18					

*Unsuccessful discharges are those who absconded or were sent to their COJ for further treatment.

STAR Court

* FY15	Start of Month	New admissions	DA Opt-out	Unsuccessful discharge	Graduates	End of Month
Total		12		8	9	
Ave. Per Month		1		0.66666667	0.75	

FY17	Start of Month	New admissions	DA Opt-out	Unsuccessful discharge	Graduates	End of Month
Sept. 16	14	3	0	0	0	17
Oct. 16	17	0	0	0	4	13
Nov. 16	13	4	0	1	0	16
Dec. 16	16	1	0	0	0	17
Jan. 17	17	0	0	1	0	16
Feb. 17	15	1	0	3	1	12
Mar. 17	12	0	0	0	0	12
Apr. 17	12	0	0	2	0	10
May-17	10	1	0	0	0	11
Jun. 17	10	0	0	0	0	10
Jul. 17	10	0	0	0	0	10
Aug. 17	10	1	0	0	4	6

* Denotes slightly lower numbers due to incomplete data.

STAR Court

FY18	Start of Month	New admissions	DA Opt-out	Unsuccessful discharge	Graduates	End of Month
Sept. 17	6	1	0	1	0	6
Oct. 17						
Nov. 17						
Dec. 17						
Jan. 18						
Feb. 18						
Mar. 18						
Apr. 18						
May-18						
Jun. 18						
Jul. 18						
Aug. 18						

* Denotes slightly lower numbers due to incomplete data.