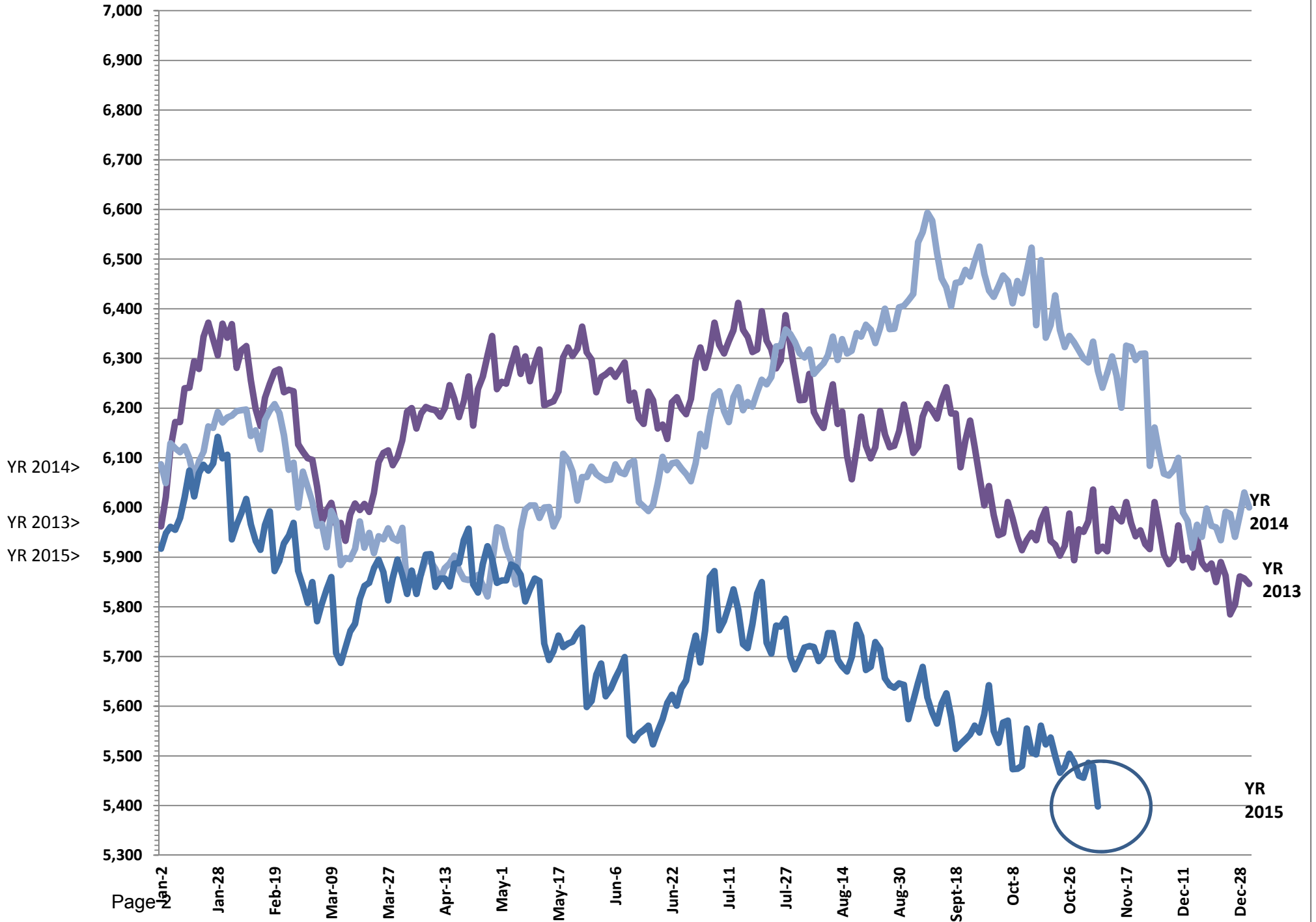


**Jail Population Committee Meeting  
November 13, 2015 at 10:00 am  
FCCB, 1<sup>st</sup> floor, Room A5**

**AGENDA**

1. **Jail Population** – Snapshot 11/11/15 - 5,437
2. Jail Population **monthly averages & graphs/charts** (pages 2 thru 6)
  - 10/15: 5,509 (-81)
  - 09/15: 5,590 (-137)
  - 08/15: 5,727 (-45)
  
3. October highlights: **High:** 10/14 **5,579** & **Low:** 10/27 of **5,446** Range of **133**
4. Book-in avgs. :Oct-184 Sep-190; Aug -252; July- 205; June- 195 ; May - 190
5. DEWR bucket comparison (page 7)
6. DEWR bucket monthly averages (page 8)
7. Release totals by category (page 9)
8. Average length of stay based on released reason (page 10)
- A. **Jail Population Management**
  1. Community Response Team/ (SJU) (page11)
  2. TDC Desk Activity Reports (page 12)
  3. Waivers by Court and by Month (page 13)
  4. Grand Jury Processing
  5. Felony Courts monthly dispositions & Pending Dispo by Court (page 14 &15)
  6. Average Jail Pop Totals for Pending Disp. By Court (page 16)
  7. DA's cases pending lab analysis (page 17)
  8. Misdemeanor Courts' initiative (page 18)
  9. Discussion items:
  
10. Special Programs holds: There are 194 inmates waiting for special programs.  
Wilmer 51, ISF 49, RTC 30 and 15 for Mental Health
11. Pre-Trial Release monthly statistics (page 19)
12. Bond Supervision Unit monthly report (page 20)
13. Alternative Sentencing Program stats (page 21 &22)
  
- B. **Public Defender's Office Activities**
  1. Monthly Court Stats (page 23)
  2. Mental Health Stats (page 24)
- C. **CSCD Updates**  
C.A.T.S assessments stats (page 25 &26)
- D. **Mental Health**
  1. Outpatient Competency cases & State hospital monthly admissions (page 27)
  2. Mental Health Jail Diversion activities
  3. Monthly NorthSTAR Intakes (page 28)

# Dallas County Jail Population 2013 - 2015

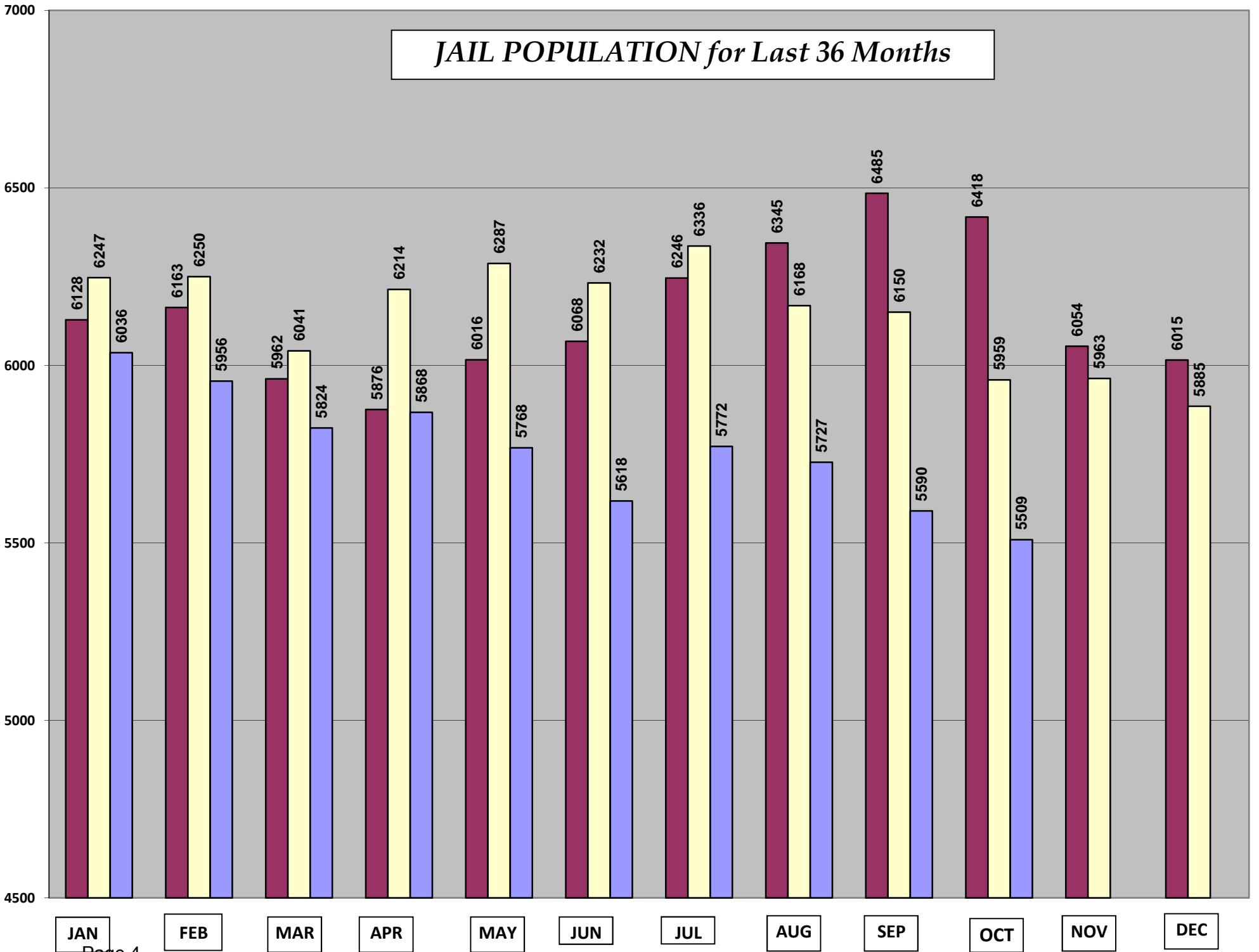


**Dallas County Jail Population Bookins 3-year statistical summary**

<b>JAIL POPULATION monthly averages</b>					
<b>2013</b>	Jail Pop AVG	<b>2014</b>	Jail Pop AVG	<b>2015</b>	Jail Pop AVG
<b>Jan-13</b>	6128	<b>Jan-14</b>	6247	<b>Jan-15</b>	6036
<b>Feb-13</b>	6163	<b>Feb-14</b>	6250	<b>Feb-15</b>	5956
<b>Mar-13</b>	5962	<b>Mar-14</b>	6041	<b>Mar-15</b>	5824
<b>Apr-13</b>	5876	<b>Apr-14</b>	6214	<b>Apr-15</b>	5868
<b>May-13</b>	6016	<b>May-14</b>	6287	<b>May-15</b>	5768
<b>Jun-13</b>	6068	<b>Jun-14</b>	6232	<b>Jun-15</b>	5618
<b>Jul-13</b>	6246	<b>Jul-14</b>	6336	<b>Jul-15</b>	5772
<b>Aug-13</b>	6345	<b>Aug-14</b>	6168	<b>Aug-15</b>	5727
<b>Sep-13</b>	6485	<b>Sep-14</b>	6150	<b>Sep-15</b>	5590
<b>Oct-13</b>	6418	<b>Oct-14</b>	5959	<b>Oct-15</b>	5509
<b>Nov-13</b>	6054	<b>Nov-14</b>	5963	<b>Nov-15</b>	
<b>Dec-13</b>	6015	<b>Dec-14</b>	5885	<b>Dec-15</b>	
	<b>6148</b>		<b>6144</b>		<b>5767</b>

<b>BOOKINS monthly totals</b>					
<b>2013</b>	Total bookins	<b>2014</b>	Total bookins	<b>2015</b>	Total bookins
<b>Jan-13</b>	6905	<b>Jan-14</b>	6646	<b>Jan-15</b>	5939
<b>Feb-13</b>	6754	<b>Feb-14</b>	6115	<b>Feb-15</b>	5165
<b>Mar-13</b>	7016	<b>Mar-14</b>	6263	<b>Mar-15</b>	5978
<b>Apr-13</b>	6787	<b>Apr-14</b>	6590	<b>Apr-15</b>	6350
<b>May-13</b>	7268	<b>May-14</b>	6462	<b>May-15</b>	5900
<b>Jun-13</b>	6837	<b>Jun-14</b>	5837	<b>Jun-15</b>	5848
<b>Jul-13</b>	7109	<b>Jul-14</b>	6453	<b>Jul-15</b>	6357
<b>Aug-13</b>	7709	<b>Aug-14</b>	6229	<b>Aug-15</b>	6103
<b>Sep-13</b>	6794	<b>Sep-14</b>	5936	<b>Sep-15</b>	5694
<b>Oct-13</b>	6893	<b>Oct-14</b>	6072	<b>Oct-15</b>	5712
<b>Nov-13</b>	5772	<b>Nov-14</b>	5431	<b>Nov-15</b>	
<b>Dec-13</b>	5162	<b>Dec-14</b>	5168	<b>Dec-15</b>	
	<b>6751</b>		<b>6100</b>		<b>5905</b>
	<b>81,006</b>		<b>73,202</b>		<b>59,046</b>

*JAIL POPULATION for Last 36 Months*



JAN

FEB

MAR

APR

MAY

JUN

JUL

AUG

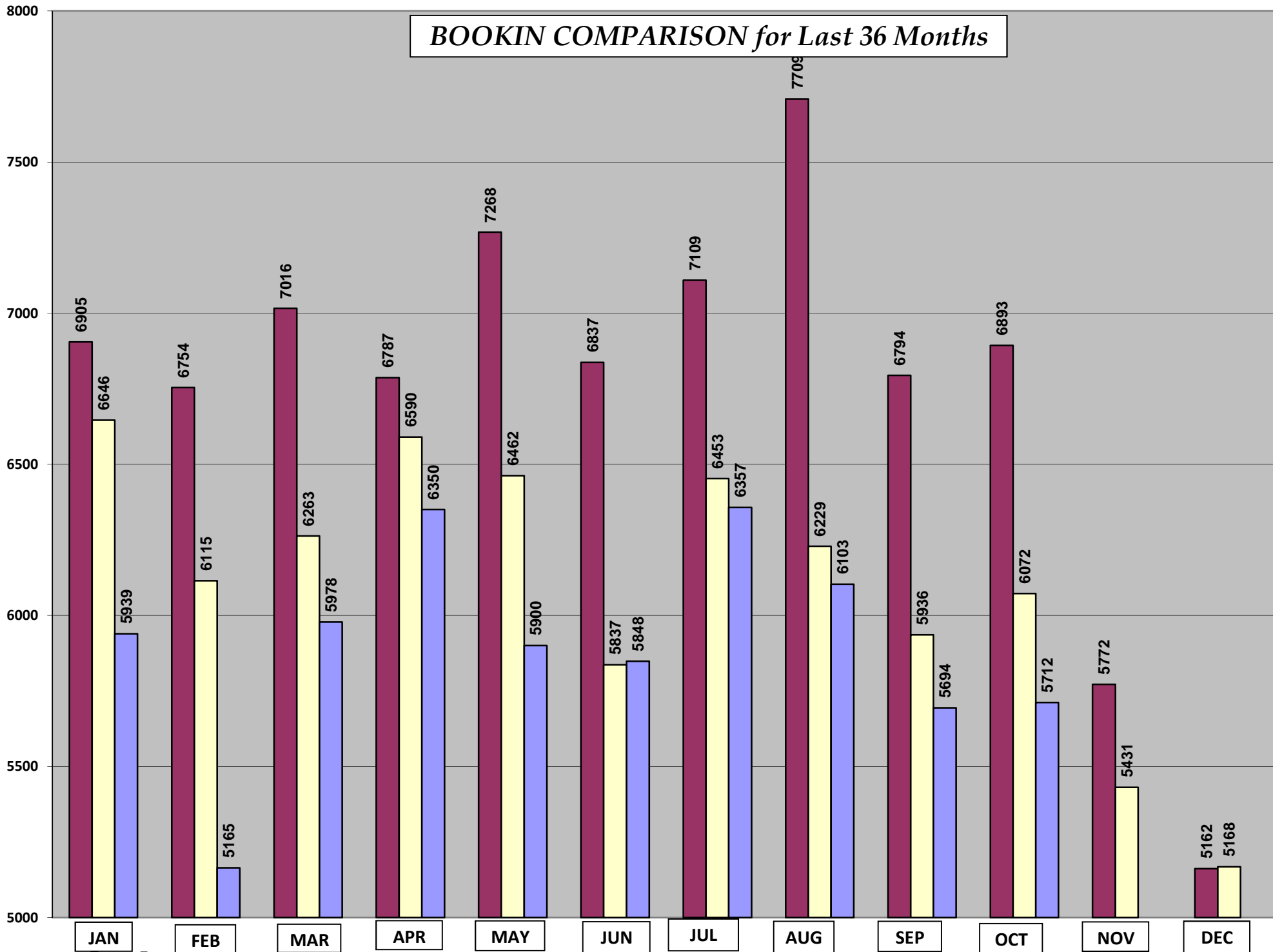
SEP

OCT

NOV

DEC

# BOOKIN COMPARISON for Last 36 Months



**DEWR OCTOBER  
2015**

	10/1	10/2	10/3	10/4	10/5	10/6	10/7	10/8	10/9	10/10	10/11	10/12	10/13	10/14	10/15	10/16	10/17	10/18	10/19	10/20	10/21	10/22	10/23	10/24	10/25	10/26	10/27	10/28	10/29	10/30	10/31	Avg	
A Felony not filed	292	295	280	325	344	298	276	268	290	270	288	312	311	323	323	303	298	327	345	336	330	339	305	280	301	322	310	303	310	280	313	306	
B Felony pend. Grand Jury	524	553	594	595	593	645	678	652	636	632	629	628	614	603	571	564	559	556	553	548	557	563	594	607	605	606	603	615	576	606	598	595	
C Felony not incl. SJF	2,192	2,165	2127	2125	2124	2100	2070	2066	2055	2059	2058	2060	2055	2073	2080	2074	2075	2071	2071	2079	2075	2064	2054	2050	2046	2046	2069	2074	2089	2063	2046	2079	
D SJF pend dispo	415	393	372	374	375	366	357	383	381	387	388	386	395	394	412	420	419	423	424	432	429	414	412	398	395	395	390	383	392	391	375	396	
E PV-Felony	273	269	249	252	255	258	250	255	266	263	268	272	265	263	258	260	246	250	252	244	252	254	245	229	229	234	244	248	144	236	238	249	
F TDC over 10y/appeal	471	494	522	522	522	511	489	497	516	538	538	538	527	536	520	537	552	552	513	494	505	476	497	520	520	494	465	477	443	461	478	507	
G Bench Warrants	37	39	40	40	40	38	37	40	43	43	43	43	43	44	44	49	50	50	50	47	45	48	45	47	47	44	42	41	45	48	50	44	
H TDC<10yr/appeal	65	35	36	36	36	37	36	36	36	35	35	35	35	37	36	36	37	37	36	35	35	35	35	34	34	33	33	33	30	30	30	36	
I Sentd. SJF	63	75	84	84	84	67	71	75	91	97	97	97	98	98	98	78	86	86	86	81	94	103	85	92	92	92	89	96	99	88	91	88	
J SJF on appeal	2	2	2	2	1	1	1	1	1	1	1	1	1	1	1	1	1	1	1	1	1	1	1	1	1	1	1	1	1	0	0	1	
K SJF serv in co jail	76	78	81	77	75	79	76	77	79	77	75	75	85	84	85	90	95	87	84	87	79	83	85	87	81	78	84	82	78	82	79	81	
L Misd. not filed	174	164	162	183	196	167	165	168	177	172	198	198	186	173	173	166	159	179	193	160	192	190	186	181	189	208	185	185	187	176	181	180	
M Misd. filed pend.	160	155	165	165	170	176	170	167	154	135	132	134	161	169	177	163	153	154	158	196	182	161	148	142	141	144	153	167	155	158	128	158	
N Misd-PV	0	0	0	0	0	0	0	0	0	0	0	0	0	0	0	0	0	0	0	0	0	0	0	0	0	0	0	0	0	0	0	0	0
O Serv in jail (Cond of Prob)	67	66	68	61	57	62	68	65	65	70	61	57	61	60	57	59	63	61	59	64	64	63	68	66	60	58	64	67	63	75	75	64	
P Serving Co time & fines	50	52	52	49	46	44	52	49	54	58	56	51	52	55	58	51	49	40	33	37	43	43	50	50	46	45	44	45	52	58	61	49	
Q Serv fines/CT cost only	0	0	0	0	0	0	0	0	0	0	0	0	0	0	0	0	0	0	0	0	0	0	0	0	0	0	0	0	0	0	0	0	0
R Out of county/state	57	55	59	62	67	50	58	66	47	46	49	51	52	61	71	49	51	58	60	54	64	58	44	53	58	64	47	54	68	56	65	57	
S Parole Violations	216	191	190	193	196	201	195	196	190	191	198	197	192	196	206	192	200	201	204	209	209	213	194	196	198	201	204	204	205	193	194	199	
T SAFPF	142	143	148	148	145	149	138	135	138	143	143	139	142	134	136	139	141	141	139	141	138	142	146	155	155	154	151	145	143	145	150	143	
U Special Programs	113	122	125	125	109	101	102	105	107	109	109	107	98	102	106	112	119	119	117	117	111	119	124	130	130	124	114	120	122	127	131	115	
V Other- Incompetent	59	62	62	62	62	67	64	66	65	65	65	64	61	61	61	66	65	65	65	65	64	66	69	69	69	68	67	66	68	72	72	65	
W US Marshall holds	2	2	3	3	2	8	8	2	4	5	5	5	5	5	2	3	3	3	3	3	2	2	2	2	2	2	3	4	2	3	4	3	
X Contempt-in Jail	18	18	18	19	19	22	22	26	20	20	20	20	19	20	21	20	17	17	17	17	25	25	23	22	22	22	21	23	22	18	18	20	
Y Contempt-Furlough	303	303	303	303	303	303	303	303	303	303	303	303	303	303	303	303	303	303	303	302	302	302	302	302	302	302	302	302	302	302	302	302	303
Z PEACE Bond	0	0	0	0	0	0	0	0	0	0	0	0	0	0	0	0	0	0	0	0	0	0	0	0	0	0	0	0	0	0	0	0	0
AA TYC hold	0	0	0	0	0	0	0	0	0	0	0	0	0	0	0	0	0	0	0	0	0	0	0	0	0	0	0	0	0	0	0	0	0
BB Immigration hold	4	2	4	1	0	3	3	1	5	3	0	0	7	5	3	6	8	1	0	2	3	5	6	1	0	4	4	4	2	2	4	3	
CC Class C Misd. only	26	35	32	20	16	32	23	28	25	30	15	24	27	32	23	22	28	20	10	24	28	28	43	14	15	21	21	16	24	34	26	25	
DD Contract inmates	0	0	0	0	0	0	0	0	0	0	0	0	0	0	1	0	0	0	0	0	0	0	0	0	0	0	0	0	0	0	0	0	0
EE US Military hold	0	0	0	0	0	0	0	0	0	0	0	0	0	0	0	0	0	0	0	0	0	0	0	0	0	0	0	0	0	0	0	0	0
ZZ Default	52	50	51	44	37	28	48	49	29	31	37	45	45	50	32	47	29	62	50	54	45	42	42	40	42	44	38	51	67	58	49	45	
With Furlough added	5853	5818	5829	5870	5874	5813	5760	5776	5777	5783	5811	5842	5840	5882	5858	5810	5806	5864	5826	5829	5874	5839	5805	5768	5780	5806	5748	5806	5689	5762	5758	5811	
Jail Population-Actual	5550	5515	5526	5567	5571	5510	5457	5473	5474	5480	5508	5539	5537	5579	5555	5507	5503	5561	5523	5527	5572	5537	5503	5466	5478	5504	5446	5504	5387	5460	5456	5509	
INTAKES	204	191	188	133	183	170	206	233	200	144	120	171	242	201	198	182	153	126	202	237	228	219	161	106	118	191	227	206	228	240	104	184	
RELEASES	252	242	136	104	179	240	265	193	229	110	90	139	226	199	222	239	116	109	174	252	219	239	262	99	67	188	240	198	263	273	112	190	
VARIANCE	48	51	-52	-29	-4	70	59	-40	29	-34	-30	-32	-16	-2	24	57	-37	-17	-28	15	-9	20	101	-7	-51	-3	13	-8	35	33	8	5	

Total Bookins

5,712

Total Releases

5,876

Total Jail Bed Days

170,775.00

= \$ 11,848,370

## DEWR BUCKET COMPARISON

BUCKET NAMES	OCT 2014 vs 2015	OCT 14	OCT 15	AUG 15	SEP 15	OCT 15	SEP vs OCT
Variance							
<b>SPECIAL FOCUS</b>							
Fel.pend excl.SJF	<b>-276</b>	2355	2079	2146	2151	2079	<b>-72</b>
State Jail Felony	<b>-55</b>	451	396	407	407	396	<b>-11</b>
PV-Felony	<b>-75</b>	324	249	280	276	249	<b>-27</b>
Felony pend Grand Jury	<b>-74</b>	669	595	575	556	595	<b>39</b>
Special Programs	<b>-26</b>	141	115	101	111	115	<b>4</b>
Parole Violator only	<b>-17</b>	216	199	234	216	199	<b>-17</b>
Class C Misd. only	<b>0</b>	25	25	32	24	25	<b>1</b>
<b>TRENDING UP</b>							
SJF-Serv Co.Jail (12.44a)	<b>14</b>	67	81	84	71	81	<b>10</b>
SAFPF	<b>36</b>	107	143	116	143	143	<b>0</b>
Incompetent	<b>25</b>	40	65	56	59	65	<b>6</b>
<b>TRENDING DOWN</b>							
Misdemeanors pending	<b>-48</b>	206	158	186	169	158	<b>-11</b>
Sentenced to SJF	<b>-27</b>	115	88	104	86	88	<b>2</b>
Felony Not Filed	<b>3</b>	303	306	348	329	306	<b>-23</b>
US Marshal	<b>-14</b>	17	3	2	2	3	<b>1</b>
Serving County Time	<b>-16</b>	65	49	52	49	49	<b>0</b>
Contempt in Jail	<b>-22</b>	42	20	22	18	20	<b>2</b>
Bench Warrants	<b>-2</b>	46	44	47	43	44	<b>1</b>
<b>STABLE</b>							
Immigration	<b>-8</b>	11	3	3	3	3	<b>0</b>
TDC<10yr/appeal	<b>-9</b>	45	36	40	39	36	<b>-3</b>
Serv as Cond of Prob.	<b>-4</b>	68	64	74	72	64	<b>-8</b>
Out of Co/State	<b>3</b>	54	57	59	63	57	<b>-6</b>
TYC	<b>0</b>	0	0	0	0	0	<b>0</b>
<b>Jail Population Avg.</b>	<b>-450</b>	<b>5959</b>	<b>5509</b>	<b>5727</b>	<b>5590</b>	<b>5509</b>	<b>-81</b>

DEWR BUCKET MONTHLY AVERAGES

	Oct 13	Nov 13	Dec 13	Jan 14	Feb 14	Mar 14	Apr 14	May 14	Jun 14	Jul 14	Aug 14	Sep 14	Oct 14	Nov 14	Dec 14	Jan 15	Feb 15	Mar 15	Apr 15	May 15	Jun 15	Jul 15	Aug 15	Sep 15	Oct 15	Avg
Felony not filed	252	217	230	265	237	227	265	273	259	244	245	245	303	330	340	321	270	270	302	281	284	333	348	329	306	266
Felony pend GJ	815	691	655	700	789	710	729	690	734	873	696	611	669	628	542	716	579	555	601	576	603	622	575	556	595	716
Fel.pend excl.SJF	2260	2166	2203	2225	2218	2255	2236	2294	2278	2257	2379	2428	2355	2355	2384	2355	2388	2368	2263	2233	2146	2092	2146	2151	2079	2,179
State Jail Fel only	472	430	450	509	462	481	459	508	483	463	507	508	451	471	496	481	497	453	436	470	427	425	430	407	396	467
PV-Felony	359	341	329	364	377	366	355	363	358	359	311	357	324	330	302	277	282	311	302	299	268	274	280	276	249	355
TDC over 10yrs	483	513	538	549	511	484	475	435	441	462	426	414	410	439	472	482	483	515	527	475	469	483	474	468	507	437
Bench Warrants	49	49	48	43	55	58	58	61	59	58	48	43	46	45	50	52	43	41	51	49	46	57	47	43	44	48
TDC <10y/appeal	62	61	51	41	43	44	48	41	38	41	43	41	45	46	45	44	46	42	40	40	41	39	40	39	36	49
Sentenced SJF	131	149	134	116	113	71	123	128	136	123	123	158	115	106	98	107	129	97	92	94	106	118	104	86	88	106
Sentd SJF/appeal	4	4	4	4	4	5	5	3	2	2	2	2	4	6	4	3	3	3	3	3	2	1	2	2	1	5
SJF-Serv Co Jail	49	51	45	51	50	52	68	67	51	40	53	63	67	69	61	56	73	66	84	77	71	87	84	71	81	58
Misdmnr not filed	143	150	149	159	145	139	159	154	146	168	157	162	145	144	141	168	180	172	199	182	186	205	185	187	180	168
Misdmnr filed-	258	227	212	263	265	235	229	247	213	237	246	250	206	208	207	202	192	194	194	206	201	191	186	169	158	238
PV-Misdmnr	0	0	0	0	0	0	0	0	0	0	0	0	0	0	0	0	0	0	0	0	0	0	0	0	0	0
Serv as Con of Prob.	82	76	62	65	64	62	70	70	64	67	70	61	68	75	69	61	73	68	73	72	77	73	74	72	64	71
Serv Co time/ fines	86	73	64	81	104	87	91	83	84	82	89	73	65	55	45	43	63	47	49	47	47	52	52	49	49	84
Serv fines/ fees only	0	0	0	0	0	0	0	0	0	0	0	0	0	0	0	0	0	0	0	0	0	0	1	0	0	0
Out of Co/State	71	63	64	58	62	63	73	65	72	77	65	57	54	55	53	51	60	57	64	65	66	63	59	63	57	64
Parole Vio.	311	300	313	315	285	265	299	301	292	284	257	245	216	185	170	176	183	184	183	178	181	236	234	216	199	266
SAFPF	136	130	151	140	145	129	126	123	145	138	116	113	107	120	116	135	123	94	105	118	111	131	116	143	143	132
Sp.Pgrms	212	189	159	137	134	125	128	131	122	120	121	145	141	125	122	125	108	101	96	106	98	109	101	111	115	166
Incompetent	30	32	35	28	35	36	34	39	50	45	43	36	40	43	48	49	56	76	86	85	78	63	56	59	65	45
US Marshal	25	24	27	30	37	39	70	80	78	76	59	33	17	15	13	12	6	2	1	2	2	2	2	2	3	15
Cntmpt-in Jail	45	44	40	44	49	49	54	63	56	42	38	40	42	44	38	42	39	29	26	25	25	24	22	18	20	44
Furlough	378	350	355	354	359	353	351	350	350	349	350	349	348	348	348	348	347	329	307	306	306	305	304	304	303	401
PEACE Bond	0	0	0	0	0	0	0	0	0	0	0	0	0	0	0	0	0	0	0	0	0	0	0	0	0	0
TYC hold	0	0	0	0	0	0	0	0	0	0	0	0	0	0	0	0	0	0	0	0	0	1	0	0	0	0
Immigration hold	8	12	10	10	9	10	11	10	9	8	8	11	11	8	6	5	6	7	7	9	8	8	3	3	3	10
Class C only	29	20	16	19	21	16	18	22	22	24	23	24	25	22	22	25	25	24	34	33	32	34	32	24	25	28
Contract	0	0	0	0	0	0	0	0	0	0	0	0	0	0	0	0	0	0	0	0	0	0	0	0	0	0
US Military	0	0	0	0	0	0	0	0	0	0	0	0	0	0	0	0	0	0	0	0	0	0	0	0	0	0
Default	39	40	28	31	36	33	31	35	40	46	42	33	32	40	40	48	48	48	50	41	43	49	46	46	45	41
Furlough added	6791	6404	6370	6601	6609	6394	6565	6637	6582	6685	6518	6499	6308	6310	6233	6384	6303	6153	6175	6074	5924	6078	6002	5893	5811	6,465
<b>Jail Population</b>	<b>6418</b>	<b>6054</b>	<b>6015</b>	<b>6247</b>	<b>6250</b>	<b>6041</b>	<b>6214</b>	<b>6287</b>	<b>6232</b>	<b>6336</b>	<b>6168</b>	<b>6150</b>	<b>5959</b>	<b>5963</b>	<b>5885</b>	<b>6036</b>	<b>5956</b>	<b>5824</b>	<b>5868</b>	<b>5768</b>	<b>5618</b>	<b>5772</b>	<b>5727</b>	<b>5590</b>	<b>5509</b>	<b>6,063</b>
<b>INTAKES</b>	<b>222</b>	<b>192</b>	<b>167</b>	<b>214</b>	<b>218</b>	<b>202</b>	<b>220</b>	<b>208</b>	<b>195</b>	<b>208</b>	<b>201</b>	<b>198</b>	<b>196</b>	<b>196</b>	<b>167</b>	<b>192</b>	<b>184</b>	<b>193</b>	<b>212</b>	<b>153</b>	<b>195</b>	<b>205</b>	<b>197</b>	<b>190</b>	<b>190</b>	<b>210</b>
<b>RELEASES</b>	<b>228</b>	<b>199</b>	<b>171</b>	<b>204</b>	<b>227</b>	<b>198</b>	<b>217</b>	<b>210</b>	<b>192</b>	<b>210</b>	<b>202</b>	<b>205</b>	<b>198</b>	<b>198</b>	<b>173</b>	<b>184</b>	<b>194</b>	<b>192</b>	<b>212</b>	<b>97</b>	<b>194</b>	<b>207</b>	<b>196</b>	<b>193</b>	<b>193</b>	<b>210</b>
<b>VARIANCE</b>	<b>-6</b>	<b>-7</b>	<b>-4</b>	<b>10</b>	<b>-9</b>	<b>4</b>	<b>3</b>	<b>-2</b>	<b>3</b>	<b>2</b>	<b>-1</b>	<b>-8</b>	<b>2</b>	<b>2</b>	<b>6</b>	<b>-8</b>	<b>-16</b>	<b>1</b>	<b>0</b>	<b>56</b>	<b>1</b>	<b>-2</b>	<b>1</b>	<b>3</b>	<b>3</b>	<b>2</b>



**Monthly Release Totals by Category**

Category	Oct 2014	Nov 2014	Dec 2014	Jan 2015	Feb 2015	Mar 2015	Apr 2015	May 2015	Jun 2015	Jul 2015	Aug 2015	Sep 2015	Oct 2015	Net Sep 2015 vs Oct 2015
Deceased	0	1	0	0	0	1	0	1	0	0	0	0	1	1
Escaped	0	0	0	0	0	0	0	0	0	0	0	0	1	1
Failed to Report	1	2	0	3	1	3	0	0	2	3	1	0	2	2
Failed to Return	0	0	0	0	0	0	0	2	0	0	0	0	0	0
Per finding of fact/dry writ	94	42	42	42	29	32	28	37	26	27	46	44	33	-11
JTC/Wilmer	79	55	81	46	50	73	53	55	78	54	69	75	62	-13
No Billed	20	13	6	6	16	8	7	12	10	12	11	10	8	-2
Other	153	135	130	118	92	112	123	148	107	173	137	131	124	-7
PAID FINE only	0	3	1	2	0	0	1	0	2	2	0	2	0	-2
Parole InAbsentia	1	0	3	2	0	2	5	4	1	1	1	3	1	-2
Parole Warrant W/drw	96	64	96	83	65	72	61	49	51	61	64	65	69	4
Ptd Cash Bnd	216	240	218	235	231	292	255	225	243	244	263	187	232	45
Ptd PR Bnd	160	141	150	138	123	116	128	120	129	121	116	144	108	-36
Ptd Pretrial Bnd	148	117	129	147	102	124	121	106	115	116	94	103	96	-7
Ptd Surety	947	930	956	1044	1022	1107	1054	974	952	1114	1066	1075	1060	-15
Ptd Writ Bnd	0	0	0	0	1	1	1	1	0	1	2	3	0	-3
Per Court Order	114	100	98	112	107	128	102	92	104	103	91	101	119	18
Probation	201	176	183	159	144	202	206	170	205	171	191	153	177	24
Agency's pick-up expired	156	162	135	186	160	170	181	174	137	163	180	160	137	-23
Article 14.06	15	26	14	14	14	9	15	37	20	25	9	15	10	-5
Class C only	968	786	817	952	790	930	1160	1093	984	1146	1079	897	888	-9
per Investigating Agency	30	25	42	41	27	35	40	34	49	41	39	48	37	-11
per Teletype	268	239	268	264	324	312	362	312	298	343	352	289	292	3
to Dallas Co. Agency	265	252	233	262	264	259	308	287	291	317	286	219	260	41
INS	218	160	108	92	90	109	115	127	105	135	107	89	104	15
to Investigating Agency	5	7	14	12	20	10	15	12	6	3	5	16	17	1
Mental Hospital	24	25	29	39	19	35	31	36	39	47	28	37	26	-11
Military	1	0	1	0	0	1	0	0	0	1	1	1	0	-1
Out of County	341	295	342	307	318	340	344	357	390	437	354	347	387	40
Out of State	33	28	28	28	39	40	40	39	39	38	40	54	28	-26
Rem.Frm.Furlough Count	0	0	0	0	1	7	0	0	0	0	0	0	1	1
Special Programs	153	126	126	126	122	134	123	169	153	131	121	134	147	13
TDC	701	513	464	624	618	625	614	723	594	750	562	652	753	101
US Marshall	15	16	16	25	22	17	14	13	22	16	28	16	43	27
Served Time	700	665	627	603	614	647	723	588	658	649	706	712	645	-67
Served Time/Pd Fine	6	3	1	4	5	11	12	6	6	12	8	3	8	5
<b>TOTALS</b>	<b>6129</b>	<b>5347</b>	<b>5358</b>	<b>5716</b>	<b>5430</b>	<b>5964</b>	<b>6364</b>	<b>6082</b>	<b>5813</b>	<b>6427</b>	<b>6076</b>	<b>5785</b>	<b>5876</b>	91
<b>avg per day</b>	198	178	173	184	193	192	212	196	194	207	196	187	189	

**AVERAGE LENGTH OF STAY IN JAIL BASED ON RELEASE REASON**

RELEASE CATEGORY	2013 avg	Jan 2014	Feb 2014	Mar 2014	Apr 2014	May 2014	Jun 2014	Jul 2014	Aug 2014	Sep 2014	Oct 2014	Nov 2014	Dec 2014	2014 avg	Jan 2015	Feb 2015	Mar 2015	Apr 2015	May 2015	Jun 2015	Jul 2015	Aug 2015	Sep 2015	Oct 2015
State Hosp	118	105	76	111	102	95	78	113	97	111	101	98	113	100	116	118	124	145	159	131	150	124	131	119
Paroled in Absentia	75	72	347	12	0	0	0	754	12	0	41	0	77	110	45	0	355	212	40	55	2	300	205	140
TDCJ	120	128	126	117	135	115	112	128	127	112	103	137	135	123	135	102	141	125	145	145	133	123	130	121
JTC/Wilmer	97	121	103	76	82	72	75	76	70	82	73	83	80	83	71	78	72	84	67	57	49	52	65	46
Special Programs	71	57	74	75	74	50	59	68	50	60	70	71	83	66	79	80	80	73	76	69	70	60	70	66
US Marshall	46	59	51	27	42	65	84	97	104	165	135	80	129	87	20	21	119	205	290	103	102	124	69	69
Other	24	14	13	13	12	14	72	22	13	17	7	8	8	18	10	20	15	22	5	8	32	47	53	51
Parole Wrnt wdrwn	46	56	41	41	38	50	42	52	49	57	53	40	40	47	39	38	38	31	60	55	44	33	44	35
on Probation	44	45	42	42	46	42	38	40	51	51	42	45	52	45	44	61	63	51	60	63	51	45	45	45
No Bill	31	30	34	32	30	29	25	28	27	25	30	27	32	29	36	35	38	31	29	31	41	27	33	30
Out of State	24	22	17	23	17	69	31	24	25	19	33	19	33	28	29	27	26	25	28	31	25	27	17	39
to INS	47	25	33	35	47	24	48	51	50	39	46	51	50	42	55	49	60	65	71	71	58	74	56	60
Posted PR Bond	28	32	29	27	29	40	33	27	26	30	21	31	29	30	19	21	30	18	24	20	30	17	23	20
Order of Court	30	22	17	17	27	18	26	28	38	24	18	20	20	23	22	45	22	27	23	21	51	21	24	24
Served Time	21	23	20	22	21	21	25	22	23	24	26	23	5	21	28	25	26	24	26	22	22	23	21	24
Out of Co	21	14	18	21	18	23	20	17	21	19	20	21	23	20	21	26	22	23	21	17	21	23	22	21
Failed to Report	17	12	14	17	18	0	0	18	0	6	10	7	0	9	6	19	8	0	17	10	11	12	411	19
Agcy pick-up expired	13	10	14	10	17	18	12	18	17	11	12	16	19	15	17	18	13	11	13	12	18	13	14	18
Per Teletype	9	6	7	7	8	9	15	7	8	8	6	4	11	8	8	7	9	8	8	8	11	9	10	10
To Dallas Co Agny	12	8	8	8	13	15	15	11	12	14	10	7	10	11	13	16	16	12	13	14	11	12	11	11
to Invtgng Agcy	4	5	5	3	20	2	2	19	0	2	2	2	4	6	2	2	4	17	2	3	2	1	2	2
Per Invtgng Agcy	5	5	5	5	11	5	5	6	7	6	8	7	8	7	7	8	7	17	7	2	6	16	6	7
Finding of fact/Dry Writ	7	7	6	7	7	7	7	7	6	6	7	7	9	7	9	9	10	8	10	11	8	8	8	10
Class C only	8	6	8	6	10	9	9	8	8	9	7	7	11	8	9	11	11	9	11	10	10	11	12	12
Ptd Surety	6	5	6	4	6	9	5	7	7	5	7	6	7	6	5	8	4	6	7	6	5	5	5	4
to US Military	3	0	5	2	0	0	5	0	0	4	5	0	5	2	0	0	18	0	0	0	5	0	3	0
Ptd Writ Bd	7	4	6	0	2	2	0	0	2	3	3	0	0	2	0	7	6	0	3	0	2	1	4	0
Ptd Pretrial Bd	3	3	3	3	3	3	3	3	3	3	3	4	4	3	3	3	3	1	3	2	2	2	2	2
Ptd Cash Bd	2	2	2	2	2	2	3	2	2	2	2	2	2	2	2	2	2	1	2	1	1	1	1	1
Serv Time/Pd Fine	7	2	3	2	3	1	3	1	2	2	2	1	1	2	1	9	2	0	1	0	2	0	0	0
Article 14.06	3	1	1	0	3	2	4	14	13	13	2	16	16	7	10	25	8	36	19	13	28	15	12	15
Deceased	39	0	3	6	4	0	0	0	0	0	0	33	0	4	0	0	340	0	0	0	0	0	0	3
Failed to Return	0	0	68	0	9	0	0	0	0	0	0	0	0	6	0	0	0	0	0	0	0	0	0	0
Escaped	0	0	0	0	0	0	0	0	0	0	0	0	0	0	0	0	0	0	0	0	0	0	0	6
Removed from furlough	16	0	0	31	0	0	6	0	0	0	0	0	0	3	0	0	0	0	0	0	0	0	0	102
Avg length stay in-jail/ those released/ in the month	29	30	29	27	32	29	31	30	30	30	28	29	30	30	30	29	31	30	31	31	30	28	31	32
Total Releases for month	6750	6338	6347	6139	6505	6510	5762	6501	6260	6164	6129	5347	5358	6113	5716	5430	5964	6364	6082	5813	6427	6076	5785	5876

## STATE JAIL INITIATIVE STATISTICS

Month For the Month Ending	PLEAS			REVOICATIONS			TRIALS			DISMISSALS	WAIVERS	DISPOSITIONS
	By Court	By Mag	Total	By Court	By Mag	Total	By Court	By Jury	Total			
32 January 2014	447	189	636	133	0	133	2	0	2	34	111	805
33 February 2014	454	204	658	166	0	166	0	2	2	3	95	829
34 March 2014	528	272	800	163	0	163	0	0	0	11	69	974
35 April 2014	456	236	692	145	0	145	1	1	2	11	63	850
36 May 2014	420	185	605	177	0	177	1	0	1	14	59	797
35 June 2014	497	176	673	179	0	179	3	5	8	6	88	866
36 July 2014	513	284	797	195	0	195	1	3	4	8	94	1,004
37 August 2014	503	188	691	136	0	136	0	1	1	15	66	843
38 September 2014	455	276	731	179	0	179	1	0	1	17	55	928
39 October 2014	665	345	1,010	114	0	114	0	1	1	13	52	1,138
40 November 2014	317	186	503	153	0	153	0	1	1	13	54	670
41 December 2014	417	180	597	147	0	147	0	0	0	14	27	758
42 January 2015	490	228	718	161	0	161	0	0	0	9	53	888
43 February 2015	459	215	674	134	0	134	0	0	0	14	35	822
44 March 2015	449	219	668	161	0	161	0	0	0	29	37	858
45 April 2015	612	292	904	188	0	188	0	0	0	21	10	1,113
46 May 2015	488	201	689	166	0	166	0	0	0	42	0	897
47 June 2015	611	173	784	159	0	159	0	2	2	20	4	965
48 July 2015	669	264	933	217	0	217	0	5	5	32	3	1,187
49 August 2015	547	252	799	168	0	168	0	2	2	24	0	993
50 September 2015	457	211	668	188	0	188	0	4	4	50	0	910
51 October 2015	544	292	836	177	0	177	0	0	0	46	3	1,059
Average	527	214	741	160	12	172	1	1	2	17	72	932

DALLAS COUNTY SHERIFF'S DEPARTMENT  
 FUGITIVE SECTION FISCAL YEAR 2016  
 TDCJ MONTHLY ACTIVITY SHEET  
 MONTH: October 2015

BEGINNING TOTAL OF INMATES PAPER READY:

309 25

ID / SJ

DATE	ID	SJ	JUDGMENTS PROCESSED	JUDGMENTS RETURNED	#OF INMATES PR / ID	PAR VIOL READY	B/W RTR	# OF INMATES TO TDCJ	#OF INMATES WAITING / ID	#OF INMATES PR / SJ	# OF INMATES TO SJ	#OF INMATES WAITING / SJ	# OF INMATES TO ISF	# OF INMATES TO SAFFP
	JUDGMENTS RECEIVED	JUDGMENTS RECEIVED												
1	33	13	34	7	4	0	0	53	260	5	7	23	0	3
2	40	26	27	5	0	0	0	3	257	5	20	8	28	0
3	0	0	0	0	0	0	0	0	257	0	0	8	0	0
4	0	0	0	0	0	0	0	1	256	0	0	8	0	0
5	13	12	25	1	23	0	0	0	279	0	0	8	4	0
6	24	13	63	2	19	0	0	28	270	13	21	0	0	0
7	29	16	67	4	48	0	1	36	282	9	0	9		15
8	35	16	33	0	20	0	0	4	298	4	0	13	0	3
9	30	20	68	0	29	0	0	0	327	0	0	13	9	0
10	0	0	0	0	0	0	0	0	327	0	0	13	0	0
11	0	0	0	0	0	0	0	0	327	0	0	13	0	0
12	19	14	45	5	43	1	10	1	369	0	0	13	2	4
13	19	8	69	7	33	0	0	33	369	0	0	13	0	0
14	45	15	33	0	13	0	0	0	382	11	0	24	0	8
15	13	6	12	5	19	0	0	25	376	0	7	17	0	3
16	17	7	12	0	2	0	0	7	371	6	23	0	22	0
17	0	0	0	0	0	0	0	1	370	0	0	0	0	0
18	0	0	0	0	0	0	0	0	370	0	0	0	0	0
19	24	23	20	2	6	0	0	41	335	0	0	0	0	2
20	30	21	42	1	21	2	0	35	321	9	9	0	0	1
21	22	17	52	2	13	7	0	1	333	17	0	17	0	9
22	63	36	44	0	26	0	2	42	317	0	0	17	0	3
23	20	7	25	1	18	0	0	0	335	6	23	0	17	0
24	0	0	0	0	0	0	0	0	335	0	0	0	0	0
25	0	0	0	0	0	0	0	0	335	0	0	0	0	0
26	34	16	26	0	0	0	0	23	312	0	0	0	1	1
27	30	18	122	0	43	0	10	43	312	18	7	11	2	4
28	41	16	76	7	25	0	0	1	336	14	0	25	0	12
29	10	8	60	10	19	6	1	53	302	0	0	25	0	6
30	33	12	0	2	3	2	9	2	303	0	20	5	12	0
31	0	0	0	0	0	0	0	0	303	0	0	5	0	0
<b>TOTAL</b>	<b>624</b>	<b>340</b>	<b>955</b>	<b>61</b>	<b>427</b>	<b>18</b>	<b>33</b>	<b>433</b>	<b>303</b>	<b>117</b>	<b>137</b>	<b>5</b>	<b>97</b>	<b>74</b>

## PRE-INDICTMENT WAIVERS BY COURT BY MONTH

<b>2013 Year Totals</b>	<b>151</b>	<b>97</b>	<b>90</b>	<b>111</b>	<b>96</b>	<b>66</b>	<b>72</b>	<b>75</b>	<b>121</b>	<b>149</b>	<b>58</b>	<b>95</b>	<b>93</b>	<b>131</b>	<b>86</b>	<b>83</b>	<b>96</b>	<b>1670</b>
<b>Year Avg</b>	<b>13</b>	<b>8</b>	<b>7</b>	<b>9</b>	<b>8</b>	<b>5</b>	<b>6</b>	<b>6</b>	<b>10</b>	<b>12</b>	<b>5</b>	<b>8</b>	<b>8</b>	<b>11</b>	<b>7</b>	<b>7</b>	<b>8</b>	<b>139</b>
<b>Year Avg</b>	<b>16</b>	<b>7</b>	<b>5</b>	<b>5</b>	<b>5</b>	<b>5</b>	<b>7</b>	<b>6</b>	<b>7</b>	<b>11</b>	<b>4</b>	<b>4</b>	<b>5</b>	<b>4</b>	<b>4</b>	<b>5</b>	<b>5</b>	<b>104</b>
<b>DATE</b>	<b>CDC1</b>	<b>CDC2</b>	<b>CDC3</b>	<b>CDC4</b>	<b>CDC5</b>	<b>CDC6</b>	<b>CDC7</b>	<b>194<sup>th</sup></b>	<b>195<sup>th</sup></b>	<b>203<sup>rd</sup></b>	<b>204<sup>th</sup></b>	<b>265<sup>th</sup></b>	<b>282<sup>nd</sup></b>	<b>283<sup>rd</sup></b>	<b>291<sup>st</sup></b>	<b>292<sup>nd</sup></b>	<b>363<sup>rd</sup></b>	<b>Total</b>
<b>2014 Year Totals</b>	<b>195</b>	<b>82</b>	<b>63</b>	<b>64</b>	<b>60</b>	<b>58</b>	<b>86</b>	<b>67</b>	<b>85</b>	<b>129</b>	<b>51</b>	<b>50</b>	<b>59</b>	<b>46</b>	<b>45</b>	<b>55</b>	<b>58</b>	<b>1253</b>
<b>Year Avg</b>	<b>16</b>	<b>7</b>	<b>5</b>	<b>5</b>	<b>5</b>	<b>5</b>	<b>7</b>	<b>6</b>	<b>7</b>	<b>11</b>	<b>4</b>	<b>4</b>	<b>5</b>	<b>4</b>	<b>4</b>	<b>5</b>	<b>5</b>	<b>104</b>
<b>DATE</b>	<b>CDC1</b>	<b>CDC2</b>	<b>CDC3</b>	<b>CDC4</b>	<b>CDC5</b>	<b>CDC6</b>	<b>CDC7</b>	<b>194<sup>th</sup></b>	<b>195<sup>th</sup></b>	<b>203<sup>rd</sup></b>	<b>204<sup>th</sup></b>	<b>265<sup>th</sup></b>	<b>282<sup>nd</sup></b>	<b>283<sup>rd</sup></b>	<b>291<sup>st</sup></b>	<b>292<sup>nd</sup></b>	<b>363<sup>rd</sup></b>	<b>Total</b>
<b>Jan 15</b>	<b>17</b>	<b>2</b>	<b>2</b>	<b>10</b>	<b>2</b>	<b>7</b>	<b>5</b>	<b>3</b>	<b>9</b>	<b>20</b>	<b>15</b>	<b>4</b>	<b>5</b>	<b>1</b>	<b>4</b>	<b>7</b>	<b>3</b>	<b>116</b>
<b>Feb 15</b>	<b>16</b>	<b>5</b>	<b>2</b>	<b>8</b>	<b>5</b>	<b>6</b>	<b>7</b>	<b>9</b>	<b>1</b>	<b>4</b>	<b>5</b>	<b>7</b>	<b>3</b>	<b>4</b>	<b>1</b>	<b>6</b>	<b>4</b>	<b>93</b>
<b>Mar 15</b>	<b>7</b>	<b>10</b>	<b>5</b>	<b>9</b>	<b>1</b>	<b>3</b>	<b>10</b>	<b>6</b>	<b>8</b>	<b>3</b>	<b>7</b>	<b>5</b>	<b>2</b>	<b>5</b>	<b>0</b>	<b>4</b>	<b>0</b>	<b>85</b>
<b>Apr 15</b>	<b>19</b>	<b>12</b>	<b>7</b>	<b>4</b>	<b>7</b>	<b>3</b>	<b>10</b>	<b>6</b>	<b>14</b>	<b>7</b>	<b>3</b>	<b>5</b>	<b>4</b>	<b>6</b>	<b>4</b>	<b>3</b>	<b>6</b>	<b>120</b>
<b>May 15</b>	<b>21</b>	<b>4</b>	<b>0</b>	<b>9</b>	<b>2</b>	<b>5</b>	<b>6</b>	<b>4</b>	<b>1</b>	<b>6</b>	<b>15</b>	<b>3</b>	<b>3</b>	<b>1</b>	<b>4</b>	<b>9</b>	<b>1</b>	<b>94</b>
<b>Jun 15</b>	<b>13</b>	<b>2</b>	<b>3</b>	<b>2</b>	<b>3</b>	<b>2</b>	<b>1</b>	<b>8</b>	<b>3</b>	<b>13</b>	<b>12</b>	<b>2</b>	<b>2</b>	<b>1</b>	<b>4</b>	<b>10</b>	<b>16</b>	<b>97</b>
<b>Jul 15</b>	<b>21</b>	<b>5</b>	<b>3</b>	<b>3</b>	<b>2</b>	<b>7</b>	<b>2</b>	<b>5</b>	<b>7</b>	<b>6</b>	<b>4</b>	<b>4</b>	<b>4</b>	<b>5</b>	<b>12</b>	<b>11</b>	<b>3</b>	<b>104</b>
<b>Aug 15</b>	<b>9</b>	<b>6</b>	<b>4</b>	<b>5</b>	<b>6</b>	<b>9</b>	<b>4</b>	<b>4</b>	<b>9</b>	<b>2</b>	<b>2</b>	<b>6</b>	<b>2</b>	<b>5</b>	<b>10</b>	<b>3</b>	<b>3</b>	<b>89</b>
<b>Sep 15</b>	<b>15</b>	<b>3</b>	<b>3</b>	<b>2</b>	<b>3</b>	<b>6</b>	<b>3</b>	<b>14</b>	<b>13</b>	<b>2</b>	<b>1</b>	<b>0</b>	<b>7</b>	<b>9</b>	<b>5</b>	<b>2</b>	<b>7</b>	<b>95</b>
<b>Oct 15</b>	<b>9</b>	<b>4</b>	<b>5</b>	<b>20</b>	<b>4</b>	<b>3</b>	<b>7</b>	<b>6</b>	<b>4</b>	<b>7</b>	<b>7</b>	<b>8</b>	<b>3</b>	<b>6</b>	<b>8</b>	<b>4</b>	<b>2</b>	<b>107</b>
<b>Nov 15</b>																		
<b>Dec 15</b>																		
<b>2015 Year Totals</b>	<b>147</b>	<b>53</b>	<b>34</b>	<b>72</b>	<b>35</b>	<b>51</b>	<b>55</b>	<b>65</b>	<b>69</b>	<b>70</b>	<b>71</b>	<b>44</b>	<b>35</b>	<b>43</b>	<b>52</b>	<b>59</b>	<b>45</b>	<b>1000</b>
<b>Year Avg</b>	<b>15</b>	<b>5</b>	<b>3</b>	<b>7</b>	<b>4</b>	<b>5</b>	<b>6</b>	<b>7</b>	<b>7</b>	<b>7</b>	<b>7</b>	<b>4</b>	<b>4</b>	<b>4</b>	<b>5</b>	<b>6</b>	<b>5</b>	<b>100</b>

## DISPOSITION TOTALS BY FELONY COURT

<b>2010</b>	Jan	Feb	Mar	April	May	Jun	Jul	Aug	Sept	Oct	Nov	Dec	Average	
Avg	157	167	187	196	177	163	180	186	185	191	178	170	178	
<b>TOTAL DISPOSTIONS</b>	<b>2667</b>	<b>2841</b>	<b>3172</b>	<b>3338</b>	<b>3010</b>	<b>2779</b>	<b>3066</b>	<b>3167</b>	<b>3148</b>	<b>3239</b>	<b>3018</b>	<b>2898</b>	<b>3040</b>	<b>36,343</b>
<b>2011</b>	Jan	Feb	Mar	April	May	Jun	Jul	Aug	Sept	Oct	Nov	Dec	Average	
Avg	171	142	195	190	192	219	196	205	176	192	165	147	182	
<b>TOTAL DISPOSTIONS</b>	<b>2900</b>	<b>2408</b>	<b>3321</b>	<b>3232</b>	<b>3258</b>	<b>3721</b>	<b>3334</b>	<b>3489</b>	<b>2997</b>	<b>3261</b>	<b>2803</b>	<b>2499</b>	<b>3184</b>	<b>37,223</b>
<b>2012</b>	Jan	Feb	Mar	April	May	Jun	Jul	Aug	Sept	Oct	Nov	Dec	Average	
Avg	161	163	186	185	176	182	158	191	158	190	180	134	172	
<b>TOTAL DISPOSTIONS</b>	<b>2744</b>	<b>2764</b>	<b>3154</b>	<b>3151</b>	<b>2984</b>	<b>3095</b>	<b>2691</b>	<b>3245</b>	<b>2679</b>	<b>3234</b>	<b>3062</b>	<b>2282</b>	<b>2924</b>	<b>35,085</b>
<b>2014</b>	Jan	Feb	Mar	April	May	Jun	Jul	Aug	Sept	Oct	Nov	Dec	Average	
CDC1	194	199	194	179	217	145	175	249	202	263	160	144	193	2321
CDC2	179	189	196	200	183	208	139	199	179	174	141	132	177	2119
CDC3	182	162	162	164	184	134	132	183	148	164	193	135	162	1943
CDC4	180	147	147	178	159	188	158	148	191	197	155	92	162	1940
CDC5	229	168	182	157	167	138	185	186	167	179	150	132	170	2040
CDC6	170	163	163	156	143	165	166	160	115	193	118	126	153	1838
CDC7	197	192	196	139	131	196	134	180	156	212	144	127	167	2004
194TH	221	194	198	199	224	170	202	242	137	223	154	186	196	2350
195TH	182	182	172	191	156	159	152	218	187	170	170	120	172	2059
203RD	151	148	164	188	180	158	115	217	150	182	138	159	163	1950
204TH	238	199	195	165	195	149	157	159	190	202	144	142	178	2135
265TH	144	201	171	209	199	173	200	193	175	230	142	111	179	2148
282ND	198	148	145	189	159	159	158	170	184	142	182	154	166	1988
283RD	215	223	174	185	209	215	205	215	164	224	209	144	199	2382
291ST	254	216	197	212	230	151	142	230	165	285	183	174	203	2439
292ND	114	188	156	182	173	176	112	181	192	184	145	113	160	1916
363RD	172	184	174	208	175	148	196	240	138	154	162	115	172	2066
Avg	189	183	176	182	181	167	160	198	167	199	158	136	175	
<b>TOTAL DISPOSTIONS</b>	<b>3220</b>	<b>3103</b>	<b>2986</b>	<b>3101</b>	<b>3084</b>	<b>2832</b>	<b>2728</b>	<b>3370</b>	<b>2840</b>	<b>3378</b>	<b>2690</b>	<b>2442</b>	<b>3145</b>	<b>35,774</b>
<b>2015</b>	Jan	Feb	Mar	April	May	Jun	Jul	Aug	Sept	Oct	Nov	Dec	Average	
CDC1	177	155	180	215	210	209	193	208	200	195			194	1942
CDC2	187	114	179	164	220	160	168	203	143	233			177	1771
CDC3	238	118	191	163	148	175	166	169	203	214			179	1785
CDC4	144	117	155	199	173	173	188	166	145	221			168	1681
CDC5	147	135	163	193	152	168	199	162	176	182			168	1677
CDC6	146	119	133	158	176	130	172	197	151	168			155	1550
CDC7	186	131	212	167	219	177	178	190	179	161			180	1800
194TH	169	152	233	180	201	309	237	192	253	248			217	2174
195TH	157	129	164	193	143	244	146	172	202	201			175	1751
203RD	144	147	160	171	187	221	179	172	215	166			176	1762
204TH	198	191	228	158	227	212	167	206	275	185			205	2047
265TH	164	197	241	190	228	276	242	229	238	256			226	2261
282ND	178	125	201	148	189	165	210	156	210	195			178	1777
283RD	194	197	191	222	188	190	223	212	159	241			202	2017
291ST	183	152	204	199	254	210	189	206	216	221			203	2034
292ND	137	164	165	183	179	214	231	179	221	192			187	1865
363RD	175	128	116	192	154	201	175	163	126	151			158	1581
Avg	172	145	183	182	191	202	192	187	195	202			185	
<b>TOTAL DISPOSTIONS</b>	<b>2924</b>	<b>2471</b>	<b>3116</b>	<b>3095</b>	<b>3248</b>	<b>3434</b>	<b>3263</b>	<b>3182</b>	<b>3312</b>	<b>3430</b>			<b>3333</b>	<b>31,475</b>

# Felony Courts Pending Dispositions And Monthly Jail Chain Averages By Court

Month & Year	CDC1	CDC2	CDC3	CDC4	CDC5	CDC6	CDC7	194th	195th	203rd	204th	265th	282nd	283rd	291st	292nd	363rd
	Burns	Adams	Lewis	Collins	Thompson	Howard	Frizell	White	Tinsley	Hawthorne	Kemp	Bennett	Davis	Magnis	Mitchell	Birmingham	Holmes
01/15 AVG	169	191	190	197	234	240	233	276	210	217	240	268	208	270	225	264	208
ranking	1	3	2	4	11	T-12	10	17	7	8	T-12	15	T-5	16	9	14	T-5
	Burns	Adams	Lewis	Collins	Thompson	Howard	Frizell	White	Tinsley	Hawthorne	Kemp	Bennett	Davis	Magnis	Mitchell	Birmingham	Holmes
02/15 AVG	167	192	190	183	210	246	242	271	201	196	202	249	235	264	225	259	219
ranking	1	4	3	2	8	13	12	17	6	5	7	14	11	16	10	15	9
	Burns	Adams	Lewis	Collins	Thompson	Howard	Frizell	White	Tinsley	Hawthorne	Kemp	Bennett	Davis	Magnis	Mitchell	Birmingham	Holmes
03/15 AVG	164	176	187	179	204	248	245	387	197	199	190	244	242	261	233	247	219
ranking	1	2	4	3	8	15	13	17	6	7	5	12	11	16	10	14	9
	Burns	Adams	Lewis	Collins	Thompson	Howard	Frizell	White	Tinsley	Hawthorne	Kemp	Bennett	Davis	Magnis	Mitchell	Birmingham	Holmes
04/15 AVG	143	151	161	158	171	213	211	230	181	193	161	193	195	215	207	221	197
ranking	1	2	T-4	3	6	14	13	17	7	T-8	T-4	T-8	11	15	12	16	10
	Burns	Adams	Lewis	Collins	Thompson	Howard	Frizell	White	Tinsley	Hawthorne	Kemp	Bennett	Davis	Magnis	Mitchell	Birmingham	Holmes
05/15 AVG	171	168	187	190	207	240	217	263	207	204	165	239	223	226	210	236	235
ranking	3	2	4	5	T-7	16	10	17	T-7	6	1	15	11	12	9	14	13
	Burns	Adams	Lewis	Collins	Thompson	Howard	Frizell	White	Tinsley	Hawthorne	Kemp	Bennett	Davis	Magnis	Mitchell	Birmingham	Holmes
06/15 AVG	171	168	187	190	207	240	217	263	207	204	165	239	223	226	210	236	235
ranking	2	T-3	5	T-3	T-8	16	7	17	T-8	6	1	T-12	15	11	10	14	T-12
	Burns	Adams	Lewis	Collins	Thompson	Howard	Frizell	White	Tinsley	Hawthorne	Kemp	Bennett	Davis	Magnis	Mitchell	Birmingham	Holmes
07/15 AVG	160	184	177	170	199	238	204	238	201	197	150	218	218	237	216	221	196
ranking	2	5	4	3	8	T-16	10	T-16	9	7	1	T-12	T-12	15	11	14	6
	Burns	Adams	Lewis	Collins	Thompson	Howard	Frizell	White	Tinsley	Hawthorne	Kemp	Bennett	Davis	Magnis	Mitchell	Birmingham	Holmes
08/15 AVG	162	191	189	173	204	222	205	247	196	201	154	208	213	227	214	196	210
ranking	2	5	4	3	9	15	10	17	T-6	8	1	11	13	16	14	T-6	12
	Burns	Adams	Lewis	Collins	Thompson	Howard	Frizell	White	Tinsley	Hawthorne	Kemp	Bennett	Davis	Magnis	Mitchell	Birmingham	Holmes
09/15 AVG	162	183	187	173	214	221	202	247	196	199	161	193	208	238	217	195	201
ranking	2	4	5	3	13	15	10	17	8	9	1	11	12	16	14	7	12
	Burns	Adams	Lewis	Collins	Thompson	Howard	Frizell	White	Tinsley	Hawthorne	Kemp	Bennett	Davis	Magnis	Mitchell	Birmingham	Holmes
10/15 AVG	162	183	187	173	214	221	202	247	196	199	161	193	208	238	217	195	201
ranking	2	5	4	3	15	14	13	16	T-9	6	1	T-9	T-9	16	14	7	12

## Average Jail Pop Totals for Pending Dispos by Court

10/01/15-10/31/15

DATE	CDC 1	CDC 2	CDC 3	CDC 4	CDC 5	CDC 6	CDC 7	194	195	203	204	265	282	283	291	292	363	Total
JUDGE	BURNS	ADAMS	LEWIS	COLLINS	THOMPSON	HOWARD	FRIZELL	WHITE	TINSLEY	HAWTHORNE	KEMP	BENNETT	DAVIS	MAGNIS	MITCHELL	BIRMINGHAM	HOLMES	
10/01/15	183	198	170	169	227	217	202	245	193	178	157	202	200	258	211	188	204	3402
10/02/15	180	202	169	170	228	219	203	243	196	174	151	199	199	245	208	190	202	3378
10/05/15	164	194	171	171	221	218	203	242	198	177	150	195	210	239	204	183	205	3345
10/06/15	162	195	175	172	222	222	203	240	199	176	151	201	211	238	205	186	208	3366
10/07/15	164	188	173	171	222	217	201	240	199	170	152	199	213	241	203	189	212	3354
10/08/15	165	185	174	173	222	218	203	237	198	175	156	197	209	243	199	192	209	3355
10/09/15	161	183	177	169	218	216	203	229	201	177	155	201	204	242	199	192	210	3337
10/12/15	163	180	175	172	218	215	205	234	206	176	158	202	202	239	196	194	211	3346
10/13/15	164	175	177	175	213	215	212	234	207	176	151	200	193	238	197	195	209	3331
10/14/15	167	174	174	177	214	214	209	234	203	184	153	198	197	242	194	190	210	3334
10/15/15	166	174	174	173	217	215	210	232	198	183	152	201	195	239	196	189	209	3323
10/16/15	167	176	175	172	217	211	207	236	205	187	145	204	195	234	195	185	209	3320
10/19/15	160	169	175	171	216	214	207	229	203	197	145	203	195	231	196	183	209	3303
10/20/15	159	173	176	169	215	212	206	225	206	201	146	201	199	231	193	184	207	3303
10/21/15	159	176	175	166	223	212	206	228	208	194	148	204	196	231	195	183	208	3312
10/22/15	161	182	169	162	225	211	206	223	202	195	152	205	197	227	192	183	203	3295
10/23/15	158	185	170	163	229	209	209	227	199	196	153	203	197	231	189	184	203	3305
10/26/15	156	182	167	162	231	210	212	230	195	191	154	201	195	218	191	187	198	3280
10/27/15	158	182	165	160	237	212	215	230	197	193	154	198	198	222	196	187	201	3305
10/28/15	163	183	173	159	228	215	225	224	195	195	156	196	199	221	200	184	204	3320
10/29/15	163	183	176	158	220	212	222	225	195	191	157	198	197	223	194	187	201	3302
10/30/15	164	180	178	157	219	211	217	226	198	194	155	196	195	227	196	183	201	3297
OCT.AVG	164	183	178	168	222	214	208	232	200	185	152	200	200	235	198	187	206	3183
	★	↑	↓	★	↑	↓	↑	↓	↑	↓	🏆	↓	↓	↓	↓	↓	↑	
ranking	2	5	4	3	15	14	13	16	T-9	6	1	T-9	T-9	17	8	7	12	



Defendants in jail pending lab analysis						
Date	DEA	DPS	Tarrant	SWIFS	Total	Total over 30 days
06/01/13	0	57	15	90	162	45
07/08/13	0	46	5	66	117	30
08/08/13	0	43	15	98	156	37
09/07/13	0	44	5	151	201	34
10/01/13	0	21	3	78	102	15
11/11/13	0	17	3	96	114	10
12/10/13	0	17	0	89	106	15
01/06/14	0	18	0	43	61	3
02/11/14	1	37	0	80	118	16
03/07/14	3	55	4	92	154	25
04/08/14	3	82	0	97	182	35
05/12/14	1	35	5	61	102	18
06/09/14	0	51	6	78	135	32
07/03/14	2	26	8	43	79	14
08/11/14	5	54	1	59	119	23
09/10/14	5	46	0	39	93	1
10/10/14	3	56	1	62	122	0
11/11/14	6	56	6	65	133	0
12/09/14	6	60	0	36	102	0
01/09/15	4	67	3	23	97	0
02/06/15	3	52	15	28	98	0
03/06/15	4	90	20	21	135	0
04/06/15	0	52	20	41	113	0
05/06/15	2	65	15	41	123	0
06/05/15	4	51	16	18	89	0
07/06/15	3	78	8	28	117	0
08/10/15	1	65	17	27	110	0
09/04/15	2	53	40	50	110	0
10/10/15	2	51	36	45	134	0
11/06/15	0	61	21	41	123	1

# Misdemeanor Court's JAIL POPULATION INITIATIVE PROGRAM

BEGAN 6/9/08

	1	2	3	4	5	6	7	8	9	10	11	12	13	14	15	16	17	18	19	20	21	22	23	24	25	26	27	28	29	30	31	Total for the	began 6/9/08	
<b>FY12/13</b>																																	<b>\$ 120,601.33</b>	
JAN 14	10	8	14			7	16	10	15	6			11	9	16	13	7			H	12	8	9	6	4			9	7	10	15	222	\$ 6,933.06	
FEB 14			8	10	9	13	6			11	15	7	9	5			13	10	15	6	8			7	9	5	12					178	\$ 5,558.94	
MAR 14			6	9	5	10	8			7	4	6	9	4			10	9	8	7	11			11	9	13	6	5			4	161	\$ 5,028.03	
APR 14	6	3	10	7			4	7	6	9	6			4	7	9	11	6					8	6	3	4	6			9	10	6	147	\$ 4,590.81
MAY 14	3	4			4	6	7	11	5			6	9	4	10	6			7	9	6	11	4			8	4	6	13	4	147	\$ 4,590.81		
JUNE 14		6	4	7	11	4			7	5	10	7	4			11	8	4	9	3			8	11	5	9	4			7	144	\$ 4,497.12		
JULY 14	7	11	18	H			4	5	10	15	7			8	7	13	19	7				6	5	9	18	8			7	11	16	10	221	\$ 6,901.83
AUG 14	5			5	10	7	25	12			5	10	11	19	7			12	9	13	22	10			13	8	10	15	7		235	\$ 7,339.05		
SEPT 14	6	10	7	25	11			11	13	9	22	10			10	7	9	19	8			10	9	13	8	7			21	18	10	273	\$ 8,525.79	
OCT 14	7	12	5			10	12	8	21	9			11	9	8	21	8			13	10	8	17	7			12	10	9	21	11	259	\$ 8,088.57	
NOV 14			6	9	7	11	9			11	9	8	17	6			13	10	9	20	11			7	10	7	13	10			12	215	\$ 6,714.45	
DEC 14	12	7	6	9	4			11	9	6	17	7			10	9	13	20	12				9	15	H	H	H			10	13	9	208	\$ 6,495.84
<b>FY13/14</b>																																	<b>\$ 75,264.30</b>	
JAN 15	7	11			12	9	17	13	6			10	9	13	20	12			H	9	15	13	17			11	13	8	10	7	242	\$ 7,557.66		
FEB 15		10	9	12	15	6			13	15	8	9	7			15	9	7	21	10			11	9	13	17	8				224	\$ 6,995.52		
MAR 15		10	9	13	17	8			15	9	7	10				13	11	9	17	8			13	10	14	8	6			10	7	224	\$ 6,995.52	
APR 15	11	13	15			8	10	7	11	9			13	10	9	18	10			9	5	12	16	7			12	7	9	15	236	\$ 7,370.28		
May 15	9			12	14	8	9	7			13	7	12	16	8			15	11	9	7	7			8	6	10	14	7	209	\$ 6,527.07			
JUNE 15		13	10	12	9			10	7	12	15	7			15	9	7	11	15			8	10	13	17	9			14	11	8	242	\$ 7,557.66	
JULY 15	14	10	12	H		15	9	12	15	7			8	11	9	14	6			12	9	10	18	7			15	9	13	10	7	252	\$ 7,869.96	
AUG 15			12	10	15	9	9			11	12	10	15	8			6	12	9	14	7			13	10	11	15	8			9	225	\$ 7,026.75	
SEPT 15	15	11	9	7			H	12	11	14	6			10	14	11	16	9				8	6	10	13	7			13	10	9	10	231	\$ 7,214.13
OCT 15	9	11			7	12	10	15	6			16	11	9	14	8			12	9	7	10	6			10	13	11	14	7	227	\$ 7,089.21		
<b>FY15/16</b>																																	<b>\$ 72,203.76</b>	
E=Election Coverage    A=Manager's office absences																		H=Holiday					<b>Total since beginning</b>											

## PRETRIAL RELEASE SERVICES MONTHLY REPORT

	NOV 14	DEC 14	JAN 15	FEB 15	MAR 15	APRIL 15	MAY 15	JUN 15	JUL 15	AUG 15	SEPT 15	OCT 15	12mo AVG
<b>AVG BOOKINS per day</b>	181	167	192	184	193	220	190	195	205	252	190	184	<b>196</b>
<b>Interviews</b>	260	269	309	264	365	319	263	290	287	283	276	237	<b>285</b>
<b>Cr. History reviewed</b>	494	466	485	452	507	469	419	412	483	517	599	450	<b>479</b>
<b>Bonds written</b>	181	196	221	182	216	209	173	188	205	168	179	152	<b>189</b>
<b>AVG BONDS per day</b>	10.06	9.8	11.1	10.2	9.8	9.5	8.7	8.8	9.8	7.8	8.1	7	<b>9.22</b>
<b>Bonds (collected)</b>	140	163	176	139	169	163	130	143	163	107	137	130	<b>147</b>
<b>Bonds (waived)</b>	41	33	45	43	47	36	41	45	53	30	33	42	<b>41</b>
<b>Bonds TOTAL</b>	181	196	221	182	216	209	171	188	216	137	170	172	<b>188</b>
<b>FEES (collected)</b>	\$4,985	\$5,915	\$5,930	\$4,595	\$5,515	\$5,470	\$4,070	\$5,090	\$5,450	\$4,125	\$4,455	\$4,180	<b>\$4,982</b>
<b>FEES (waived)</b>	\$1,530	\$1,680	\$1,735	\$1,530	\$1,535	\$1,370	\$1,650	\$1,565	\$2,415	\$1,190	\$1,205	\$1,260	<b>\$1,555</b>
<b>FEES TOTAL</b>	\$6,515	\$7,595	\$7,665	\$6,125	\$7,050	\$6,840	\$5,720	\$6,655	\$7,865	\$5,315	\$5,660	\$5,440	<b>\$6,537</b>

AVERAGES - LATEST HISTORICAL STATISTICAL DATA	
	BKIN AVG
<b>2008 AVERAGE</b>	<b>271</b>
<b>2009 AVERAGE</b>	<b>264</b>
<b>2010 AVERAGE</b>	<b>257</b>
<b>2011 AVERAGE</b>	<b>238</b>
<b>2012 AVERAGE</b>	<b>231</b>
<b>2013 AVERAGE</b>	<b>222</b>
<b>2014 AVERAGE</b>	<b>204</b>
Jan-15	192
Feb-15	184
Mar-15	193
Apr-15	220
May-15	190
Jun-15	195
Jul-15	205
Aug-15	252
Sep-15	190
Oct-15	184

PRETRIAL RELEASE SERVICES ~ YEARLY AVERAGES			
	PTR Bond	Jail Pop	Bkin Avg
<b>2007</b>	<b>14</b>	<b>6288</b>	<b>249</b>
<b>2008</b>	<b>13</b>	<b>6125</b>	<b>271</b>
<b>2009</b>	<b>11</b>	<b>6165</b>	<b>264</b>
<b>2010</b>	<b>10</b>	<b>6818</b>	<b>257</b>
<b>2011</b>	<b>9</b>	<b>6430</b>	<b>238</b>
<b>2012</b>	<b>9</b>	<b>6310</b>	<b>231</b>
<b>2013</b>	<b>11</b>	<b>6015</b>	<b>222</b>
<b>2014</b>	<b>10</b>	<b>5846</b>	<b>215</b>

**Dallas County Department of Criminal Justice  
Bond Supervision Unit for Alcohol Monitoring  
Statistical Summary Report**

Month/Year	Total Supervised Cases Start Of Month	Bond Orders In Process	New Bond Orders Received	Successful Completions	Unsuccessful Completions	Violations Submitted to Court	Orientations Completed	Verified Installations	Total Supervised Cases End of Month	Supervision Fees Collected
Sep. 12	892	174	105	74	0	89	115	70	913	\$ 7,257.75
Oct. 12	913	198	121	123	3	90	110	79	910	\$ 7,938.50
Nov. 12	910	153	82	55	0	59	74	35	864	\$ 7,051.00
Dec. 12	864	172	89	62	0	70	79	51	935	\$ 6,227.50
Jan. 13	935	189	112	157	5	108	116	64	913	\$ 8,872.75
Feb. 13	913	197	111	142	30	73	113	68	874	\$ 8,098.25
Mar. 13	874	208	120	67	18	77	116	79	892	\$ 8,257.00
Apr. 13	892	227	129	80	4	80	127	79	938	\$ 8,579.75
May 13	938	218	120	100	28	105	105	101	929	\$ 8,733.00
Jun. 13	929	235	132	77	14	88	120	77	963	\$ 9,153.25
Jul. 13	963	408	137	85	7	115	131	73	1004	\$ 9,441.75
Aug. 13	1004	376	162	104	24	170	147	99	1092	\$ 9,955.25
Sep. 13	1092	323	129	96	4	114	135	84	1123	\$ 10,206.75
Oct. 13	1123	390	189	142	7	135	174	94	1199	\$ 11,570.25
Nov. 13	1199	402	111	87	4	69	117	51	1201	\$ 10,984.75
Dec. 13	1201	385	103	67	10	119	98	58	1219	\$ 10,193.25
Jan. 14	1219	407	184	90	9	114	96	79	1290	\$ 11,598.80
Feb. 14	1290	379	105	128	27	120	94	94	1227	\$ 12,934.25
Mar. 14	1227	358	117	125	5	113	119	63	1211	\$ 10,932.00
Apr. 14	1211	326	85	110	4	132	104	116	1205	\$ 11,085.00
May.14	1205	315	110	115	24	180	99	63	1268	\$ 10,813.50
Jun.14	1268	417	116	113	16	168	125	86	1168	\$ 10,636.00
Jul.14	1168	430	(+) 119	(-) 126	(-) 20	185	109	93	(=) 1141	\$ 11,582.50
Aug.14	1141	430	(+) 126	(-) 114	(-) 29	139	107	97	(=) 1124	\$ 10,538.00
Sep-14	1124	354	(+) 143	(-) 93	(-) 13	120	134	103	(=) 1161	\$ 10,771.00
Oct-14	1161	320	(+) 186	(-) 154	(-) 11	132	144	108	(=) 1182	\$ 11,309.00
Nov-14	1182	326	(+) 144	(-) 81	(-) 2	116	92	78	(=) 1243	\$ 11,267.00
Dec-14	1243	403	(+) 140	(-) 106	(-) 10	133	93	104	(=) 1267	\$ 12,237.00
Jan-15	1267	349	(+) 109	(-)113	(-) 1	139	58	100	(=) 1262	\$ 12,164.00
Feb-15	1262	325	(+) 120	(-) 102	(-) 0	110	81	65	(=)1280	\$ 10,672.50
Mar-15	1280	375	(+) 144	(-) 86	(-) 20	147	63	91	(=) 1318	\$ 13,136.50
Apr-15	1318	358	(+) 167	(-) 110	(-) 11	105	111	108	(=) 1364	\$ 13,337.55
May-15	1364	342	(+) 140	(-) 95	(-) 4	116	77	109	(=) 1405	\$ 12,004.00
Jun-15	1405	328	(+) 134	(-)159	(-) 11	139	134	86	(=) 1369	\$ 11,774.00
Jul-15	1369	336	(+) 120	(-)130	(-) 14	106	130	109	(=) 1345	\$ 11,271.00
Aug-15	1345	301	(+) 114	(-)162	(-) 14	112	110	75	(=) 1283	\$ 11,320.05
Sep-15	1283	378	(+) 133	(-)120	(-) 15	116	123	79	(=) 1281	\$ 11,405.50
Oct-15	1281	414	(+) 134	(-)120	(-) 7	120	131	64	(=) 1288	\$ 11,374.63

Re-Arrest	1
-----------	---

**Dallas County Department of Criminal Justice/Jail Diversion  
Alternative Sentencing Program (ASP) and Bond/Electronic Monitoring Program  
Statistical Summary Report**

**OCTOBER 2015**

**CASELOAD INFORMATION**

	10/15 ASP	10/15 Bond	10/15 Ch. Sup	10/15 TOTAL	ASP TOTAL	Bond TOTAL	Ch. Sup TOTAL	Total 9-01-09 - 10-31-15
Beginning Client Count	17	97	2	116	3	3	9(5/13)	15
Total Clients That Started The Program	26	16	0	42	1,469	984	89	2,542
Total Cases Closed	28	29	2	59	1,457	903	98	2,458
Closed Successfully	28	14	2	44	1,429	582	74	2,085
Closed Unsuccessfully	0	15	0	15	28	321	24	373
Total Clients at End of Month	15	84	0	99				

**PROGRAM DISTRIBUTION FOR CLOSED CASES**

	ASP	Bond	Ch. Sup	TOTAL	ASP	Bond	Ch. Sup	TOTAL
Full House Arrest	6	4	1	11	187	70	14	271
House Arrest w/work/school release	22	0	0	22	1,223	0	1	1,224
GPS w/work/school release	0	25	1	26	47	833	83	963
MEMS-Alcohol Monitor	14	5	0	19	549	52	0	601

**CASELOAD NON-COMPLIANCE INFORMATION**

	ASP	Bond	Ch. Sup	TOTAL	ASP	Bond	Ch. Sup	TOTAL
Violation Reports Submitted	0	46	0	46	70	1,062	46	1,178
Unsuccessful Removal from Program	0	15	0	15	28	321	24	373
Failed to Start Program/Warrant Issued	0	1	0	1	12	17	1	30
Interviewed but Rejected for Program	0	0	0	0	3	33	2	38
New Offenses Committed while in Program	0	0	0	0	4	23	5	32

**CASELOAD ACTIVITIES**

	10/15	TOTAL
Orientation Interviews Conducted	42	2,588
Computer Checks for Warrants & New Offenses	94	3,229
Telephone Contacts with Clients	806	34,278
Telephone Contacts with Non Clients	167	10,140
In Person Contacts with Clients-Office & Field	486	23,873
In Person Contacts with Non Clients-Office and Field	107	3,687

**DALLAS COUNTY FUNDS SAVED**

	10/15	Total 9-01-09 - 10-31-15
ELM Days Served/Jail Bed Days Saved	3,613	163,612
Cost of Jail Bed Per Day	\$ 69.38	SEE ADDENDUM
<b>TOTAL JAIL BED EXPENSES SAVED</b>	<b>\$250,669.94</b>	<b>\$ 9,672,541.71</b>

**ASP/BOND ELM**  
**Jail Bed Cost Savings Addendum**

<b>Time Period</b>	<b>Cost per Day</b>	<b>Days</b>	<b>Total Cost Saved</b>
9/09	\$55.60	393	\$ 21,850.80
10/09 to 9/10	\$48.49	7,589	\$ 367,990.61
10/10 to 09/11	\$57.49	16,277	\$ 934,212.50
10/11 to 09/12	\$53.13	23,536	\$ 1,250,467.68
10/12 to 09/13	\$56.29	30,368	\$ 1,709,414.72
10/13 to 9/14	\$62.46	41,130	\$ 2,568,979.80
10/14 to 9/15	\$63.11	40,706	\$ 2,568,955.66
10/15	\$69.38	3,613	\$ 250,669.94
		<b>Total Days:</b> 163,612	<b>Total Savings</b> \$9,672,541.71

<b>Time Period</b>	<b>ASP</b>	<b>Bond</b>	<b>Total clients served during month</b>	<b>Total jail bed days saved</b>	<b>County pay clients</b>	<b>Clients who paid something</b>	<b>Clients that didn't pay (not county paid)</b>	<b>Fees collected by Sentinel</b>
10/15	43	115	158	3,613	37	103	18	\$22,207.40

FY2016 Public Defender's Office Summary Statistics for Misdemeanor Courts October 2015		
Court/Judge	New Cases	Total Dispositions
CCC #1/Patterson (2 PD AVG 200)	175	260
CCC #2/Hayes (1 PD AVG 100)	100	111
CCC #3/Skemp (2 PD AVG 200)	200	211
CCC #4/Mulder (2 PD AVG 200)	200	191
CCC #5/Green (1 PD AVG 100)	100	91
CCC #6/King (1 PD AVG 100)	100	109
CCC #7/Crowder (2 PD AVG 200)	200	217
CCC #8/Yoo (1 PD AVG 100)	34	59
CCC #9/Hoffman (1 PD AVG 100)	100	98
CCC #10/Canás (1 PD AVG 75)	75	67
CCC #11/Kelly (1 PD AVG 75)	66	74
CCCAP #2/Rosenfield (1 PD AVG 100)	100	100
Floater (1 PD AVG 100)	100	100
<b>Y-T-D Totals</b>	<b>1550</b>	<b>1688</b>
<b>Courts are required to assign an average of 100 cases per month to each PD.</b>		

CCC #1: Court did not have sufficient amount of cases to assign to PD.

CCC #8: Position vacant in this one PD court.

CCC #10: Court is a family violence court and the numbers in this court are typically low.

CCC #11: Court is a family violence court and the numbers in this court are typically low. Court did not have sufficient amount of cases to assign to PD.

FY2016 Public Defender's Office Summary Statistics for Felony Courts October 2015		
Court/Judge	New Cases	Total Dispositions
CDC - Burns (1 PD AVG. 30)	39	52
CDC #2 - Adams (2 PD AVG. 60)	60	75
CDC #3 - G. Lewis (2 PD AVG. 60)	60	65
CDC #4 - Collins (3 PD AVG. 90)	102	106
CDC #5 - Thompson (2 PD AVG. 60)	60	59
CDC #6 - Howard (1 PD AVG. 30)	33	42
CDC #7 - Frizell (2 PD AVG. 60)	60	34
194th - White (2 PD AVG. 60)	78	72
195th - Tinsley (2 PD AVG. 60)	65	57
203rd - Hawthorne (1 PD AVG. 30)	32	33
204th - Kemp (1 PD AVG. 30)	35	33
265th - Bennett (2 PD AVG. 60)	73	74
282nd - Givens (2 PD AVG. 60)	63	65
283rd - Magnis (4 PD AVG. 120)	126	124
291st - Mitchell (2 PD AVG. 60)	67	56
292nd - Birmingham (2 PD AVG. 60)	64	50
363rd - Holmes (2 PD AVG. 60)	60	51
<b>Y-T-D Totals</b>	<b>1077</b>	<b>1048</b>
<b>Courts are required to assign between 30 &amp; 35 cases per month per PD.</b>		

HARRY INGRAM		FY2016 ATLAS STATISTICS										203/HAWTHORNE					
MONTH	BEGINNING # OF PENDING CASES	+NEW CASES RECEIVED THIS MONTH	=TOTAL CASES	TBJ	TBC	PLEAS	REV	GRADUATES	PROBATION MODIFICATIONS	DISMISSALS	OTHERS	TOTAL DISPOSITIONS	ENDING # PENDING CASES **	CURRENT ATLAS PARTICIPANTS	CURRENT PARTICIPANTS IN CUSTODY	FORMER ATLAS PARTICIPANTS	BOND
October	31	4	35	0	0	1	0	8	0	0	0	9	26	20	3	0	17

HARRY INGRAM		FY2016 MISDEMEANOR MENTAL HEALTH COURT STATS										CCCAP1/WADE				
MONTH	BEGINNING # OF PENDING CASES	Rediverts	+NEW CASES RECEIVED THIS MONTH	=TOTAL CASES	TBJ	TBC	PLEAS	DISMISSAL	OTHER	TOTAL DISPOSITIONS	ENDING # PENDING CASES **	CURRENT PARTICIPANTS	NUMBER OF GRADUATES	BOND***		
October	104	0	17	121	0	0	0	2	6	8	113	37	2	37		

October 2015		FY2016 MHPD STATS										
MONTH	BEGINNING # OF PENDING CASES	+NEW CASES RECEIVED THIS MONTH	=TOTAL CASES	TRIALS	PLEAS	COND. DISM.	REVO-CATION	DISMISSALS	INCOMPETENT	REFERRALS	OTHER COUNSEL APPT.	TOTAL CLOSED
R. LENOX	185	29	214	0	7	3	0	5	4	0	8	27
L. TAYLOR	260	26	286	0	7	8	5	4	0	0	4	28

MARIUM UDDIN		FY2016 FELONY COMPETENCY STATISTICS														
MONTH	BEGINNING # OF CASES	NEW CASES THIS MONTH	TBJ	TBC	Alt. Trial Dispos.	PLEAS	REVO-CATIONS	DISMISSALS	PROBATION	COMP. HRG.	EXTENSIONS	CIVIL COMMIT.	MHMR REFERRAL	CONSULTS	OTHER	ENDING # OF PEOPLE IN OCR
October	118	11	0	0	0	6	0	3	0	7	4	0	0	0	4	10

MARIUM UDDIN		FY2016 MISDEMEANOR COMPETENCY STATISTICS														
MONTH	BEGINNING # OF CASES	NEW CASES THIS MONTH	TBJ	TBC	Alt. Trial Dispos.	PLEAS	REVO-CATIONS	DISMISSALS	PROBATION	COMP. HRG.	EXTENSIONS	CIVIL COMMIT.	MHMR REFERRAL	CONSULTS	OTHER	ENDING # OF PEOPLE IN OCR
October	66	24	0	0	0	0	0	32	0	21	3	5	0	0	0	16

October 2015		MI Court												
MONTH	TOTAL NEW CASES RECEIVED	NEW CLIENTS AT GREEN OAKS	NEW CLIENTS AT MEDICAL CENTER MCKINNEY	NEW CLIENTS AT PARKLAND	NEW CLIENTS AT DALLAS BEHAVIORAL HEALTH	NEW CLIENTS AT HICKORY TRAILS	NEW CLIENTS AT ZALE LIPSHY	NEW CLIENTS AT TERRELL STATE HOSPITAL	NEW CLIENTS AT OCEANS BEHAVIORAL HOSPITAL	PROBABLE CAUSE HEARINGS HELD	NO CONTEST COMMIT	CONTESTED COMMIT	FORCED MEDS HEARING IN COURT	
L. ROBERTS	200	200	0	0	0	0	0	0	0	3	1	3	4	
L. TAYLOR	53	0	0	9	16	23	5	0	0	2	0	2	2	

RANDA BLACK		MI COURT						
MONTH	NEW CLIENTS	PROBABLE CAUSE HEARINGS HELD	NO CONTEST COMMIT TO TSH	CONTESTED COMMIT TO TSH	RECOMMITMENTS	MEDICATION HEARINGS	OUTPATIENT	JURY TRIAL
October	76	5	4	17	4	24	0	0



# ATRS

11-13-15

## Efficiency of the Evaluation Process

The average lag time of the clinical evaluations during the month of October was 6.41 days with a range of 0-17.

## Productivity (Screens & Evaluations)

(4 Divert jail evaluations not captured below)

Week	Screens	Evaluations
07/20/15	54	55
07/27/15	66	49
08/03/15	67	63
08/10/15	66	51
08/17/15	53	51
08/24/15	43	46
08/31/15	57	60
09/07/15	40	39
09/14/15	35	42
09/21/15	42	44
09/28/15	48	48
10/05/15	38	47
10/12/15	61	56
10/19/15	48	50
10/26/15	49	42
<b>Averages</b>	<b>51.13</b>	<b>49.53</b>

## **CSCD Residential Placements**

### **CURRENT FACILITY CENSUS – 11/09/15:**

2 JTC MALE beds available – 23 waiting, admitting 11 tomorrow 11/10

0 JTC FEMALE beds available – 13 waiting, admitting 0 tomorrow 11/10

7 DDC MALE beds available – 4 waiting, admitting 1 today 11/09 and 2 on Wednesday 11/11

0 DDC FEMALE beds available – 10 waiting, admitting 0 this week

36 RELAPSE TRACK MALE beds available – 4 waiting, admitting 3 today 11/09

**JTC CENSUS: 246 (164 males, 82 females)**

**DDC CENSUS: 53 (23 males, 30 females)**

**RELAPSE CENSUS: 8 males**

**TOTAL CENSUS: 307**

### **Community Residential**

#### **Homeward Bound**

Census: 3 (+2 state wide program)

Waiting: 5

#### **Nexus Recovery Center**

Census: 10

Waiting: 11 (including PPWC)

#### **The Salvation Army**

Census: 11 (with 5 more admits in Nov)

Waiting: 7

### **Out of County Residential Placements**

**(extension of JTC beds)-We have no probationers at out of county facilities**

### Jail Competency Stats 2015

	Jan	Feb	March	April	May	June	July	Aug	Sept	Oct	Nov	Dec	Totals
<b>Active</b>													
<b>New Evals - Incompetent</b>	48	61	39	38	43	41	46	51	41	44			452
<b>Waiting for the hospital - End of month</b>	31	43	73	84	79	71	55	58	52	52	0	0	
Less than 30 days	24	26	55	33	29	35	25	33	29	25			
30 to 60 days	5	12	13	38	24	16	12	9	8	17			
Greater than 60 days	2	5	5	13	26	20	18	16	15	10			
<b>Returned to jail from the hospital</b>	13	8	13	15	22	16	23	26	22	22	0	0	180
Felony	8	7	10	11	16	12	18	22	19	14			
Average length of stay (days)	105	102	80	85	100	79	101	124	100	121			
Misdemeanor	5	1	3	4	6	4	5	4	3	8			
Average length of stay (days)	91	56	84	80	71	54	64	66	75	89			
<b>Previous return legal case pending</b>	27	43	30	36	23	36	26	23	20	18	0	0	282
Less than 30 days	5	12	8	9	0	0	0	0	0	0			
1 to 3 months	7	13	6	10	6	20	12	11	12	10			
3 to 6 months	10	11	8	5	7	4	5	4	2	4			
> 6 months	5	7	8	12	10	12	9	8	6	4			
<b>Closed</b>													
<b>New Evals - Competent</b>	28	38	37	36	33	33	39	27	40	35			346
<b>Admitted to the state hospital</b>	35	18	35	13	34	38	40	26	34	26	0	0	299
Felony	24	11	22	8	24	21	26	17	23	20			
Average wait for a hospital bed (days)	61	59	56	54	54	79	76	50	69	67			
Misdemeanor	11	7	13	5	10	17	14	9	11	6			
Average wait for a hospital bed (days)	39	39	49	42	42	60	45	39	37	46			
<b>Hospital Return Legal Case Resolved</b>	22	11	23	29	20	22	16	27	21	21	0	0	212
Less than 30 days	16	2	6	7	8	8	7	18	8	12			
1 to 3 months	5	1	9	14	9	11	5	3	9	4			
3 to 6 months	1	7	3	2	3	1	3	4	2	4			
> 6 months	0	1	5	6	0	2	1	2	2	1			
<b>Case dismissed at the hospital</b>	1	5	6	12	0	6	4	4	5	4	0	0	47
Felony	0	0	1	1	0	1	0	0	0	0			
Misdemeanor	1	5	5	11	0	5	4	4	5	4			

### Monthly NorthSTAR Intakes

<b>Month-Year</b>	<b>Total inmates booked into the jail with a NorthStar match</b>	<b>Book in Totals for the month</b>	<b>% of people with a NorthStar match booked into the jail</b>
2007 Total	6501	93413	7%
2008 Total	8200	99580	8%
2009 Total	10636	98407	11%
2010 Total	12994	96245	14%
2011 Total	15810	90429	17%
2012 Total	17036	83524	20%
2013 Total	17762	81010	22%
Jan-14	1464	6639	22%
Feb-14	1308	6109	21%
Mar-14	1399	6261	22%
Apr-14	1535	6587	23%
May-14	1430	6456	22%
Jun-14	1375	5832	24%
Jul-14	1489	6453	23%
Aug-14	1523	6227	24%
Sep-14	1427	5936	24%
Oct-14	1504	6072	25%
Nov-14	1213	5429	22%
Dec-14	1252	5167	24%
<b>2014 Total</b>	<b>16919</b>	<b>73168</b>	<b>23%</b>
Jan-15	1431	5941	24%
Feb-15	1231	5164	24%
Mar-15	1546	5979	26%
Apr-15	1584	6350	25%
May-15	1504	5901	25%
Jun-15	1441	5848	25%
Jul-15	1534	6357	24%
Aug-15	1479	6103	24%
Sep-15	1359	5697	24%
Oct-15	1385	5713	24%
<b>2015 Total</b>	<b>14494</b>	<b>59053</b>	<b>25%</b>