

Dallas County Trail and Preserve Program Board

April 4, 2024



The logo is a shield-shaped emblem. The top portion is a solid blue horizontal band. The bottom portion is a solid red area. The text is centered within these sections.

DALLAS

**COUNTY
TRAIL
SYSTEM**

Public Works and
Trails Update

Public Works Updates

- P&D Trail Program responsibilities transfer to PW effective January 1st 2021 Dallas County Mobility Plan published on PW website
 - PW presented to TAPP Board at June 3rd 2021 meeting
- PW continues assessment of transferred trail projects and attending meetings with our agency partners and stakeholders
- Dallas County adopted updated Metes and Bounds for the new Commissioner District Boundaries in November 2022
- Dallas County Awarded TA Set Aside Funding for Chalk Hill Trail and Central Trail in December 2022 from NCTCOG
 - TxDOT AFA's for both projects have been received
- Public Works assisted with several TxDOT TA Set Aside Support Letters for our Partner Cities for the current Call for Projects
 - Cotton Belt Trail and the 5 Mile Creek Trail received funding

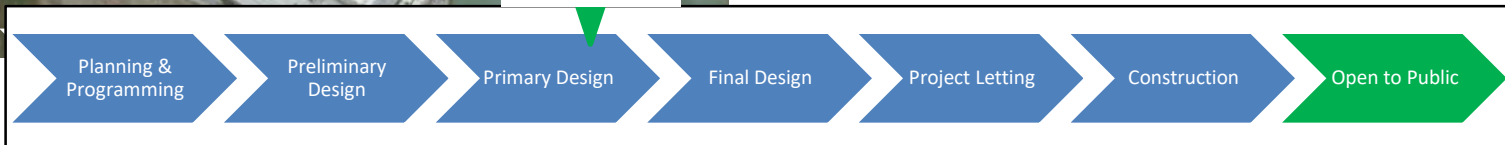
Cypress Waters Trail

Project Scope:

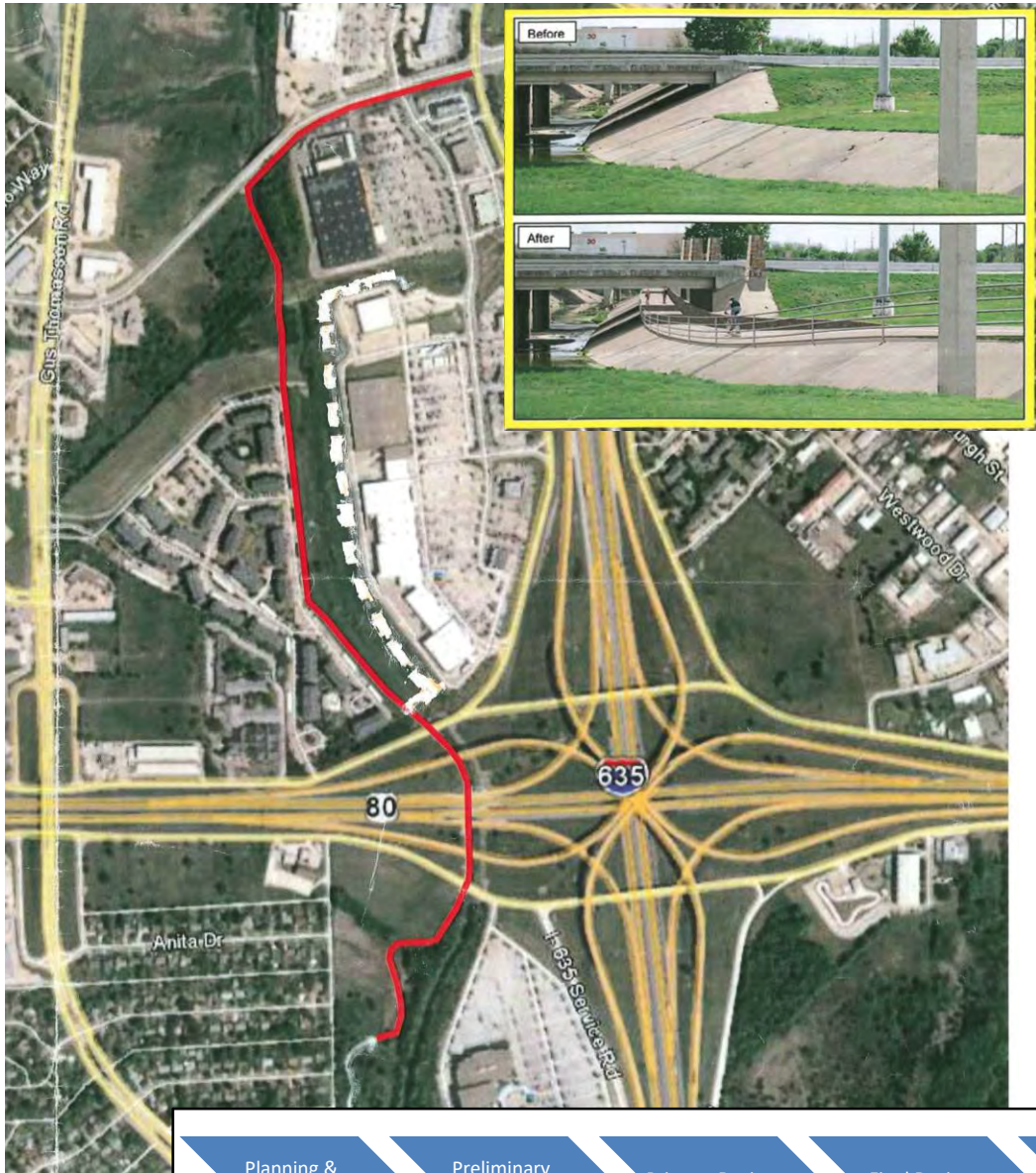
- New Construction of 14 feet wide reinforced concrete trail that includes cross drainage structures and trail safety appurtenances.

Status Update:

- **City of Dallas is taking a new ILA to City Council on June 12th. ILA will be fully executed through Commissioners Court by August**
- **95% plans were re-submitted to TxDOT in March**
- **ROW easements are still being negotiated between City and Developer**
 - **Last Taskforce Mtg with the City, County, NCTCOG & TxDOT occurred on March 27th**
 - **Dallas County DA is reviewing easement documents and PSA (finishing reviewing)**
 - **City is taking easement document with Developer and Oncor Agreement to Park Board on May 16th**



Heritage Trail (Under 80 Trail)



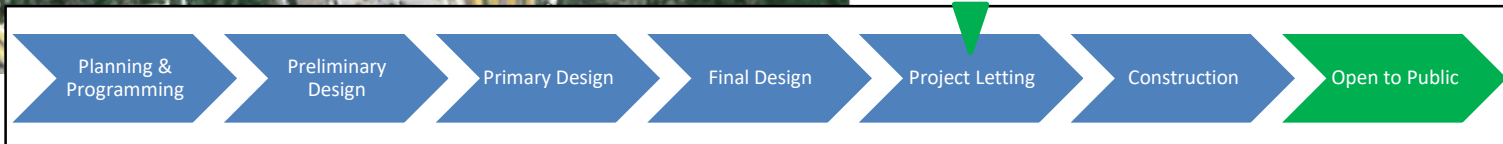
Project Scope:

- New Construction of 12 feet wide reinforced concrete Trail with 2 pedestrian bridges and parking amenities.

Status Update:

- City is coordinating with TxDOT on improvements within State Corridor
- **PSA with City of Mesquite was fully executed on October 17th**
- **City of Mesquite awarded bid in February**
- **City is holding a Pre-Construction Meeting on April 23rd**

We're Here



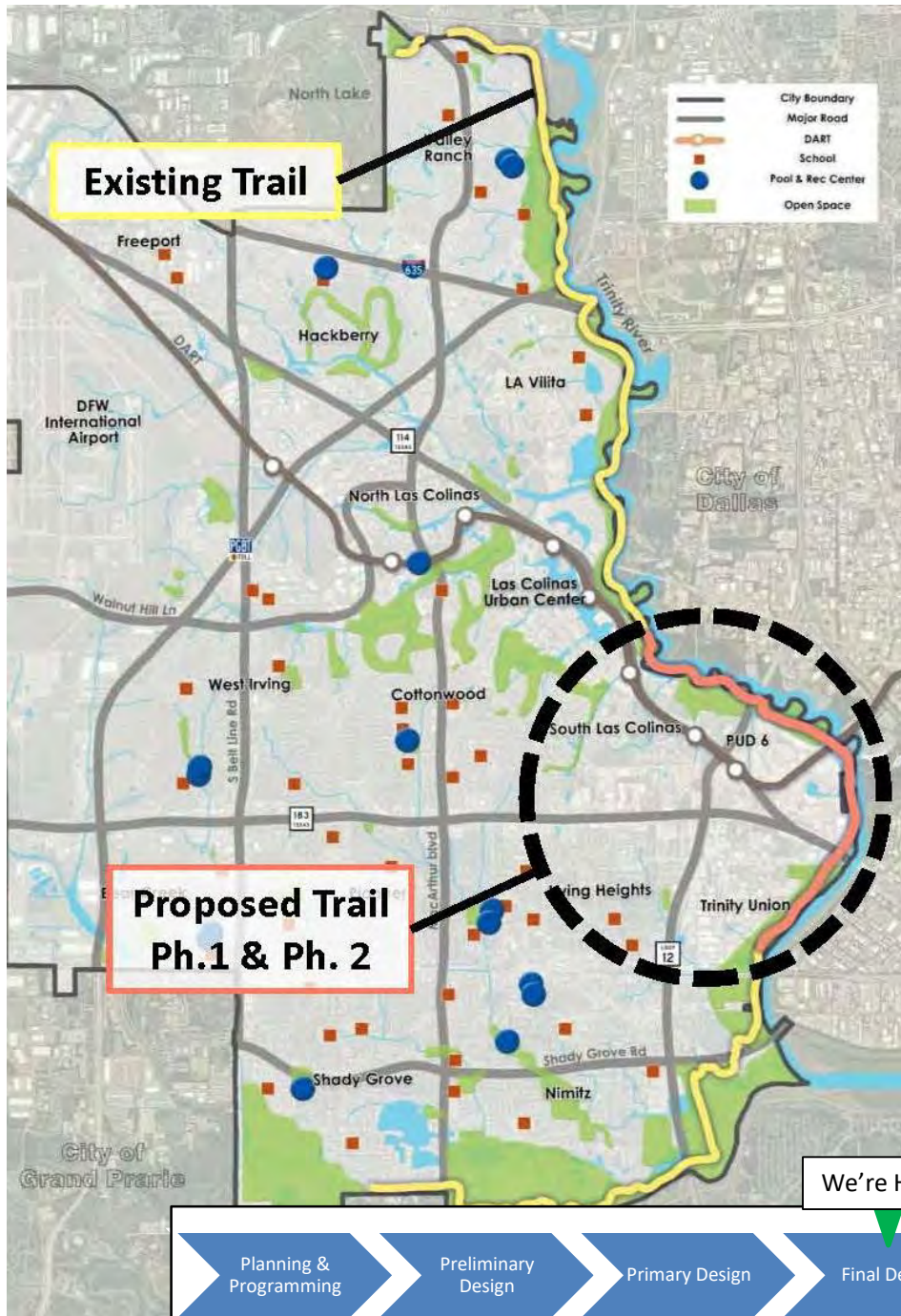
Campion Trail

Project Scope:

- New Construction of 12 feet wide reinforced Concrete Trail includes construction of three bridges, 6 low water crossings & 3 boardwalks.

Status Update:

- Phase 1 –River Hills to Frasier Dam (100% Design)
 - Split into two phases due to ROW issues
 - Southern segment began construction in July 2023 (**Concrete Pavement is complete**)
 - City is working on Agreements with City of Dallas and USACE for remaining section.
- Phase 2- Frasier Dam to California Crossing (Dallas County Participation)
 - **Dallas County has received 100% plans in July 2023 and provided comments**
 - **City received comments on the proposed bridge crossing of the Trinity. Design is being updated**
 - **Final Plans and Environmental pending USACE approval**



Campion Trail Phase 1A

Construction Photos





Parks and Open Space Update

Parks and Open Space Property Requests

Trinity River Authority Sewer Easements

Trinity River Mountain Creek Preserve

Paul S. Dryer Preserve at Windmill Hill

Brazos Electric Access Easement

Goat Island Preserve

City Sewer Projects

Rowlett Creek Preserve

Past Events

Community Forest Dedication at Spring Creek Forest Preserve

Old Growth Forest Network (OGFN)
welcomed Spring Creek Forest
Preserve as a Community Forest at the
dedication ceremony on Saturday,
February 24th.



Upcoming Events

2024 Dallas County Open Space Plan Public Events



Tuesday, April 2, 2024
6:30-8:00 PM

Alan E. Sims Cedar Hill
Recreation Center
310 E Parkerville Rd., Cedar Hill, TX 7510
Traductor de español disponible.

Thursday, April 4, 2024
6:30-8:00 PM

Coppell Senior & Community Center
at Grapevine Springs
345 W Bethel Rd., Coppell, TX 75019
Traductor de español disponible.
Có thông dịch viên tiếng Việt.

Tuesday, April 9, 2024
6:30-8:00 PM


Dallas College Irving Center
1081 W. Shady Grove Rd., Irving, TX 75060
Traductor de español disponible.

Wednesday, April 10, 2024
6:30-8:00 PM

Audubon Recreation Center
342 W Oates Rd., Garland, TX 75043
Traductor de español disponible.
Có thông dịch viên tiếng Việt.

Upcoming Events

Post Oak Preserve BioBlitz

Join Texas Nature Trackers for this timed event focused on documenting as many species as possible in a specified area using iNaturalist or eBird.

Several guided hikes will be held throughout the day.

April 6, 2024

8:00 a.m. to 8:00 p.m.



STEM Environmental
Education Center



Open Space Plan Update

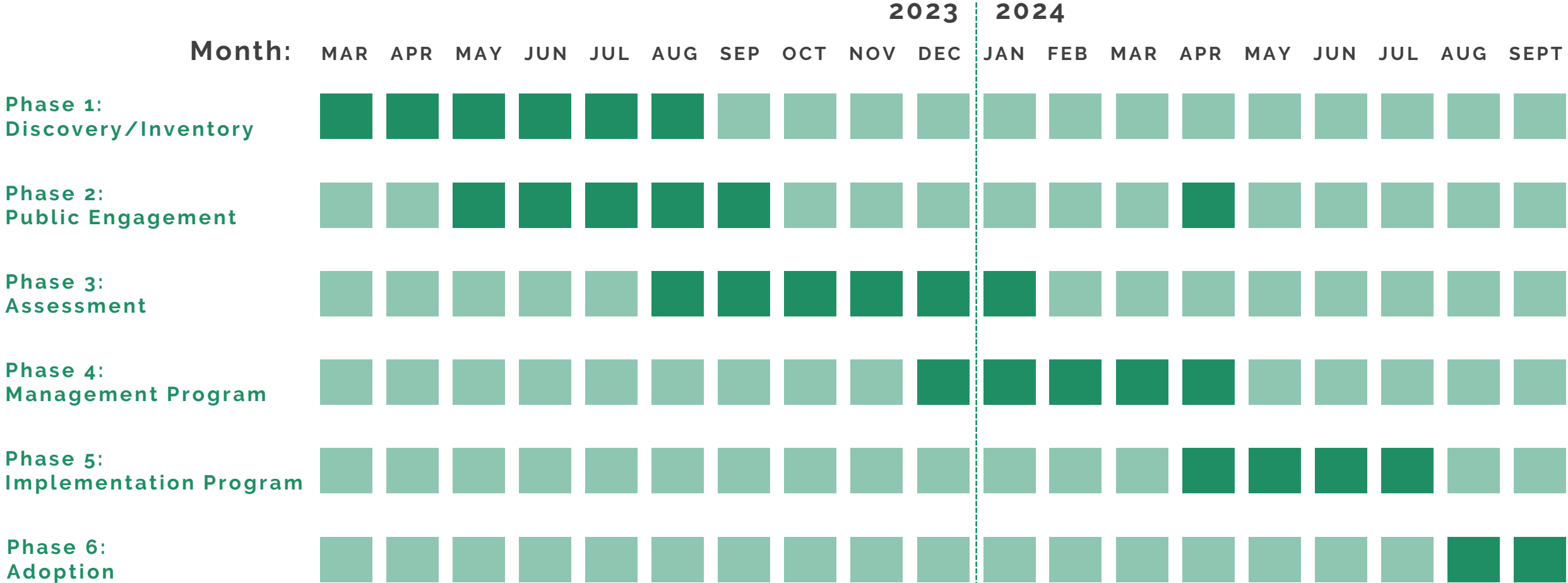
DALLAS COUNTY OPEN SPACE PLAN

TRAIL AND PRESERVE PROGRAM BOARD
PROJECT BRIEFING #6

April 4, 2024

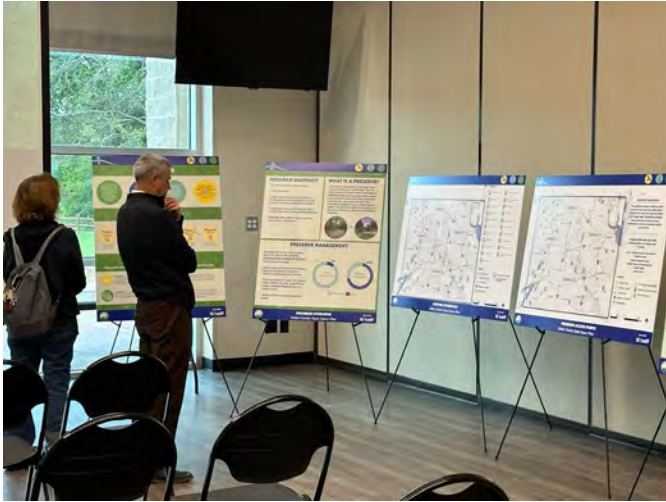


PROJECT TIMELINE



Schedule is tentative and subject to change.

PUBLIC MEETING SERIES



Dallas County Open Space Master Plan

PUBLIC MEETINGS

The Dallas County Open Space Plan will help guide enhancements and improvements to the twenty-one county preserves over the next ten years. Please visit one of the following meetings to provide your feedback on the draft plan recommendations.

Your parks and preserves are better with your input!

Tuesday, April 2, 2024
6:30-8:00 PM

Alan E. Sims Cedar Hill Recreation Center
310 E Parkerville Rd., Cedar Hill, TX 75104
Traductor de español disponible.

Thursday, April 4, 2024
6:30-8:00 PM

Coppell Senior & Community Center at Grapevine Springs
345 W Bethel Rd., Coppell, TX 75019
*Traductor de español disponible.
Có thông dịch viên tiếng Việt.*

Tuesday, April 9, 2024
6:30-8:00 PM

Dallas College Irving Center
1081 W. Shady Grove Rd., Irving, TX 75060
Traductor de español disponible.

Wednesday, April 10, 2024
6:30-8:00 PM

Audubon Recreation Center
342 W Oates Rd., Garland, TX 75043
*Traductor de español disponible.
Có thông dịch viên tiếng Việt.*

Keep up to date by following us on @DallasCountyParksOpenSpace
dallascounty.org/parks

PLAN GOALS



ENHANCE: Implement context-sensitive improvements to give residents the opportunity to explore and interact with the natural environment in a safe and responsible manner.



CONNECT: Increase awareness of and access to the preserves to better connect residents to nature in their own backyard and throughout the County.



PROTECT: Conserve and sustain the natural and cultural resources within the County while celebrating the unique features of the preserves.



MANAGE: Employ best practices for managing and funding the preserves and steward strong relationships with partners to ensure longevity of the parks and open space program.

KEY ISSUES & OPPORTUNITIES



ENHANCE

Implement context-sensitive improvements to give residents the opportunity to explore and interact with the natural environment in a safe and responsible manner.

ISSUES



Availability of amenities.
The type and number of amenities varies widely across preserves and some preserves lack amenities.



Condition of amenities.
Many preserves feature outdated amenities that are not inviting to visitors.



Attendance.
Overall attendance of preserves varies and can be influenced by the types and availability of amenities.

OPPORTUNITIES



Preserve development.
Appropriate development of amenities and facilities within the preserve and future projects should be specific to the individual preserve recommendations.



Preserve experience.
Capitalize on the intended experience each preserve offer visitors.



Preserve Safety.
Develop consistent signage at preserve entrances and throughout preserves.

KEY ISSUES & OPPORTUNITIES



CONNECT

Increase awareness of and access to the preserves to better connect residents to nature in their own backyard and throughout the County.

ISSUES



Access to amenities.
Not all preserves accommodate mobility assistance devices by providing paved paths to reach amenities.

Accessible facilities.
Where facilities exist, there are instances where upgrades are necessary to improve accessibility for all users.



Wayfinding signage.
There is a lack of consistency across the Preserve System in signs directing people to and within the preserves.

Accessing preserves using non-motorized routes.
Most preserve are not accessible via pedestrian and/or bicycle pathways or within a reasonable distance of public transportation stops.

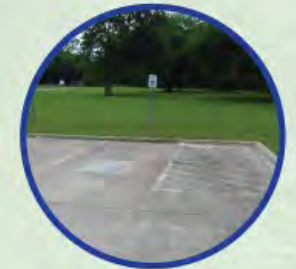


OPPORTUNITIES



Increase access to underserved residents.
The majority of the preserves are in close proximity to traditionally underserved (low-income and minority) residents.

ADA compliance.
As amenities and facilities in preserves are updated, they should be designed to support ADA accessibility.



Promote the preserves.
Leveraging community events as opportunities to share what the Dallas County Parks and Open Space Program is and what it has to offer.

KEY ISSUES & OPPORTUNITIES



PROTECT

Conserve and sustain the natural and cultural resources within the County while celebrating the unique features of the preserves.

ISSUES



Threatened and endangered species.
The majority of preserves have habitats suitable for state and federally-listed threatened and endangered species.



Invasive Species.
The majority of preserves have a notable presence of invasive species.



Cultural and historical resources.
Many preserves have a notable presence of culturally significant resources.

OPPORTUNITIES



Education.
Provide educational opportunities to visitors about existing natural and cultural resources through programs and interpretive signage.



Increase Awareness.
Seeking specific designations can increase awareness of the Parks and Open Space Program and the unique habitats, wildlife, and other resources available at preserves.



Community Partners.
There are local and regional groups that have or would be interested in building a relationship to support the maintenance of the preserves and protection of their resources.

KEY ISSUES & OPPORTUNITIES



MANAGE

Employ best practices for managing and funding the preserves and steward strong relationships with partners to ensure longevity of the parks and open space program.

ISSUES



Preserve condition.
Instances of illegal dumping, litter, and overgrown vegetation blocking trails have been observed.

Feeling of safety.
There have been reported occurrences where users have not felt safe when in preserves.



Local Capacity.
The funding and staff allocation towards the management of preserves varies across the preserve management partners and the County.

OPPORTUNITIES



Partnerships.
Continue to foster and explore partnerships with local entities to help with preserve stewardship.

Volunteers.
The Dallas County Parks and Open Space Volunteer Program and other interested groups are available to assist with maintenance of the preserves.



Investment In Personnel.
Add additional staff to increase preserve safety and to enhance the programs, partnerships, and projects that the Parks and Open Space Program increasingly manages.

RECOMMENDATION STRUCTURE

SYSTEMWIDE RECOMMENDATIONS

Series of strategies that are applicable to the entire system.

Policies: Changes to or new rules that guide Preserve management, development, and maintenance.

Programs: Enhancements or additions to operations to be more efficient and enhance the Preserves.

Partnerships: Establish and strengthen collaboration with organizations and stakeholders to enhance resources and support preserve programs.

Projects: Initiatives within the Parks and Open Space Program that involve tangible infrastructure or physical improvements to enhance the Preserves.

PRESERVE-SPECIFIC RECOMMENDATIONS

List of priority projects for each of the 21 preserves.

TYPE 1- LESTER LORCH Management Partner: City of Cedar Hill



#	DRAFT RECOMMENDATION	IMPORTANCE (TOP 3)
1	Install a solar-powered automatic security gate at the preserve entrances.	
2	Improve the existing parking lots to include additional parking spots.	
3	Develop a concept plan for the preserve focusing on adding soft-surface trails and interpretive signage, activating the upper part of the preserve with passive amenities, and identifying opportunities to connect the two parts of the preserve.	
4	Install permanent restroom facilities at the main preserve entrance.	
5	Install new information kiosks at the main preserve entrance.	
6	Integrate interpretive signage with historical information about the preserve.	
7	Create formalized soft-surface trails in the preserve.	
8	Implement a trail connection that connects to trailheads at both entrances.	

Note: All proposed trails and bikeways are sourced from the NCTCOG Veloweb

Note: Recommendations are listed in no particular order.

SYSTEMWIDE RECOMMENDATIONS

DISCUSSION QUESTIONS:

Are there any changes you would make to the draft strategies?

Is there anything missing from the draft strategies?

Are there any strategies you feel should be identified as high priority for implementation?

What partners do you think could play a role in implementation of the strategies?

SYSTEMWIDE RECOMMENDATIONS: POLICIES

DRAFT Policy Recommendations (page 1 of 2)	Related Goal(s)
<p>POL.1: Add a park ranger to monitor preserves on a more regular basis to increase sense of safety and maintain a regular presence in the preserves that do not have a preserve management or maintenance partner.</p>	Manage
<p>POL.2: As the number of programs, partnerships, and projects that the Parks & Open Space Program manages increases, add additional staff to balance new responsibilities and reduce deferred maintenance.</p>	Manage
<p>POL.3: Update Chapter 50 of the County Code to reflect more modern practices that align with the recommendations of this Master Plan such as changes to daily operations and natural/cultural resource management.</p>	Manage
<p>POL.4: Update current criteria for accepting property into the parks & open space program focusing on expanding access to existing preserves, increasing ability to provide desired facilities or amenities, and protecting valuable natural or cultural resources.</p>	Enhance, Manage
<p>POL.5: Strive for equitable and accessible distribution of preserve lands throughout the unincorporated areas to fulfill unmet open space and outdoor recreational needs of county residents.</p>	Connect

SYSTEMWIDE RECOMMENDATIONS: POLICIES

DRAFT Policy Recommendations (page 2 of 2)	Related Goal(s)
POL.6: Establish guidelines for 'maintenance modes' for each preserve classification, providing direction for frequency and type of maintenance procedures.	Manage
POL.7: Require new soft-surface trails be designed by a professional firm to utilize their expertise on the best routes, surface materials, and maintenance over time.	Enhance
POL.8: Allocate funding for professional development trainings and attending conferences to grow staff knowledge and learn best practices from peer entities.	Manage
POL.9: Explore developing a cost sharing program between the county and member cities to show accountability and strengthen relationship with partners.	Manage
POL.10: Support the establishment of a Dallas County Parks Foundation to help improve parks through private donations.	Enhance, Manage
POL.11: Develop a design and construction standards manual for preserves within the unincorporated area that guide improvements and maintenance to provide consistent standards and brand.	Manage

SYSTEMWIDE RECOMMENDATIONS: PROGRAMS

DRAFT Program Recommendations (page 1 of 3)	Related Goal(s)
PROG.1: Continue to grow the volunteer program run by the Dallas County Open Space Coordinator to improve the preserves and reduce overall maintenance costs.	Connect, Manage
PROG.2: Continue to pursue designations to highlight unique elements of the preserves as a way to promote awareness and attract visitors.	Enhance, Connect
PROG.3: Explore opportunities with allied organizations to hold programs within preserves such as bird walks, clean ups, and BioBlitz events to provide new experiences for preserve visitors.	Enhance, Connect
PROG.4: Utilize interpretive signage to highlight unique habitats to support awareness and engagement within the local community.	Enhance, Connect
PROG.5: Align future open space preservation and planning with goals from local Watershed Protection Plans to ensure protection of water resources within preserves.	Protect, Manage
PROG.6: Develop a promotional campaign for 2026 to celebrate 50 years since Lester Lorch Park, the first park in the Parks & Open Space Program, was dedicated as an opportunity to bring awareness to the program.	Connect

SYSTEMWIDE RECOMMENDATIONS: PROGRAMS

DRAFT Program Recommendations (page 2 of 3)	Related Goal(s)
PROG.7: Regularly maintain and update the Dallas County Parks & Open Space Program website to provide consistent and current information to the public.	Connect
PROG.8: Implement a robust social media strategy with frequent and varied content to grow awareness of the program and attract new visitors.	Connect
PROG.9: Establish a program for emergency markers along trails to facilitate emergency response and increase safety within preserves.	Manage
PROG.10: Continue to work with partners to pursue grant funding for preserve improvements to diversify funding sources available to accomplish projects.	Manage
PROG.11: Create easily updated marketing materials such as QR codes or digital brochures to increase accessibility to information and minimize time required for future updates.	Connect
PROG.12: Develop educational materials to share with elected officials regarding the benefits of various land management practices to serve as a resource.	Manage

SYSTEMWIDE RECOMMENDATIONS: PROGRAMS

DRAFT Program Recommendations (page 3 of 3)	Related Goal(s)
PROG.13: Provide translation of all published materials into predominant languages for Dallas County to increase the audience this information reaches.	Connect
PROG.14: Develop a FAQ about the program to share with preserve management partners and potential partnering entities in order to share consistent information on common topics.	Connect, Manage

SYSTEMWIDE RECOMMENDATIONS: PARTNERSHIPS

DRAFT Partnership Recommendations (page 1 of 3)	Related Goal(s)
PAR.1: Work with partners such as the Audubon Center and Trust for Public Land to expand stewardship, education, and community access opportunities.	Protect, Manage
PAR.2: Establish a regularly occurring meeting between Dallas County and the preserve management partners to stay informed about recent accomplishments and challenges.	Manage
PAR.3: Build relationships with nature conservation organizations to pursue funding for habitat conservation.	Protect, Manage
PAR.4: Coordinate with Dallas County Health & Human Services to increase community awareness, engagement, and promote healthy lifestyle activities related to open space accessibility.	Connect, Manage
PAR.5: Establish interdepartmental agreements with relevant county departments to align County initiatives and request support where appropriate.	Manage
PAR.6: Partner with a local university with a GIS department to digitize trails and location of amenities within preserves as a way to outsource tasks in a cost-effective manner.	Connect, Manage

SYSTEMWIDE RECOMMENDATIONS: PARTNERSHIPS

DRAFT Partnership Recommendations (page 2 of 3)	Related Goal(s)
PAR.7: Have a visible presence at preserve partner community events or activities when appropriate to bring awareness to the Parks & Open Space Program.	Connect
PAR.8: Implement and maintain a regular communication schedule for each preserve management partner including email, virtual and in-person meetings to actively maintain partnership and coordinate project updates.	Manage
PAR.9: Create a DCOSP “How to Enjoy Your Visit” printed brochure with a map of the preserve system or individual preserves and distribute brochures via local and regional entities to share knowledge of the variety of experiences the preserves offer.	Manage
PAR.10: Coordinate with relevant agencies to assist with cultural resource management including determining the best way to share these resources with the public in an appropriate manner.	Protect, Manage
PAR.11: Coordinate with Texas Parks and Wildlife (TPWD) and US Fish and Wildlife (USFWS) where threatened and endangered species are identified within preserves to ensure appropriate action steps are followed.	Protect, Manage

SYSTEMWIDE RECOMMENDATIONS: PARTNERSHIPS

DRAFT Partnership Recommendations (page 3 of 3)	Related Goal(s)
PAR.12: Partner with university and academic institutions to study ecosystem services within preserves as a way to determine the contributions preserves provide for Dallas County residents.	Protect
PAR.13: Explore a partnership with Leave No Trace to bring awareness to caring for the outdoors.	Protect, Manage
PAR.14: Collaborate with partners to seek donation opportunities from corporations and philanthropists as a way to diversify funding sources.	Manage
PAR.15: Work with NCTCOG on regional trail initiatives to learn about resources and funding opportunities.	Connect
PAR.16: Work with partners such as the Texas A&M Forest Service to monitor impact of EAB over time within the preserves.	Protect, Manage

SYSTEMWIDE RECOMMENDATIONS: PROJECTS

DRAFT Project Recommendations (page 1 of 2)	Related Goal(s)
PROJ.1: Work with other County departments with drone equipment for special projects and remote monitoring elements such as vegetation and wildlife health, facility inspections, development planning, and emergency response guidance.	Manage
PROJ.2: Invest in security cameras to help deter vandalism and illegal dumping and improve the sense of safety within preserves.	Manage
PROJ.3: Incorporate permeable surfaces and other low-impact design solutions when updating, enhancing or developing parking lots and trailheads to reduce impacts of run-off during rain events.	Enhance
PROJ.4: Remove existing debris and proactively deter illegal dumping to provide visitors with a safe and welcoming experience at preserves.	Manage
PROJ.5: Utilize best practice clearing techniques to remove invasive plant species and allow native plant species to flourish.	Protect, Manage
PROJ.6: Develop consistent signage to be implemented at preserve entrances and throughout preserves to serve as a recognizable brand for the Parks & Open Space Program.	Enhance

SYSTEMWIDE RECOMMENDATIONS: PROJECTS

DRAFT Project Recommendations (page 2 of 2)	Related Goal(s)
<p>PROJ.7: Utilize software such as i-Tree Eco to quantify the environmental (e.g. carbon sequestration) and monetary benefits that the tree canopy within the preserve system brings to the County.</p>	Manage
<p>PROJ.8: Conduct conditions assessments of each preserve on an annual or bi-annual basis to determine amenities and facilities in need of maintenance or replacement and to maintain accountability.</p>	Manage
<p>PROJ.9: Explore feasibility of larger soft-surface trail loop that would connect Goat Island, Riverbend, Cottonwood Creek, and Palmetto-Alligator Slough to promote eco-tourism opportunities.</p>	Enhance, Connect

NEXT STEPS

IN PROGRESS TASKS

- Complete public meeting series
- Draft Chapter 3

UPCOMING TASKS

- Implementation program
- Draft Chapter 4

CONTACT INFORMATION

Kendall Howard, AICP

Project Manager

khoward@halff.com

(214) 217-6401

Kelsey McNiece

Deputy Project Manager

kelsey.mcniece@halff.com

(214) 346-6318

Discussion Item:

The Loop Update with

Philip Hiatt Haigh

Proposal of Future Agenda Items



Next Meeting
June 6, 2024

See you next time!