

Bed bugs: from egg to adult

Adult female bed bugs lay up to five eggs a day.

egg

The eggs, which have a sticky outercoat, hatch in about 4 to 12 days.

first stage

During its first stage of life, the bed bug must feed on a blood meal before it can shed its outer layer and grow to the second stage.

second stage

It takes about 5 to 10 minutes for a bed bug to take a full blood meal.

third stage

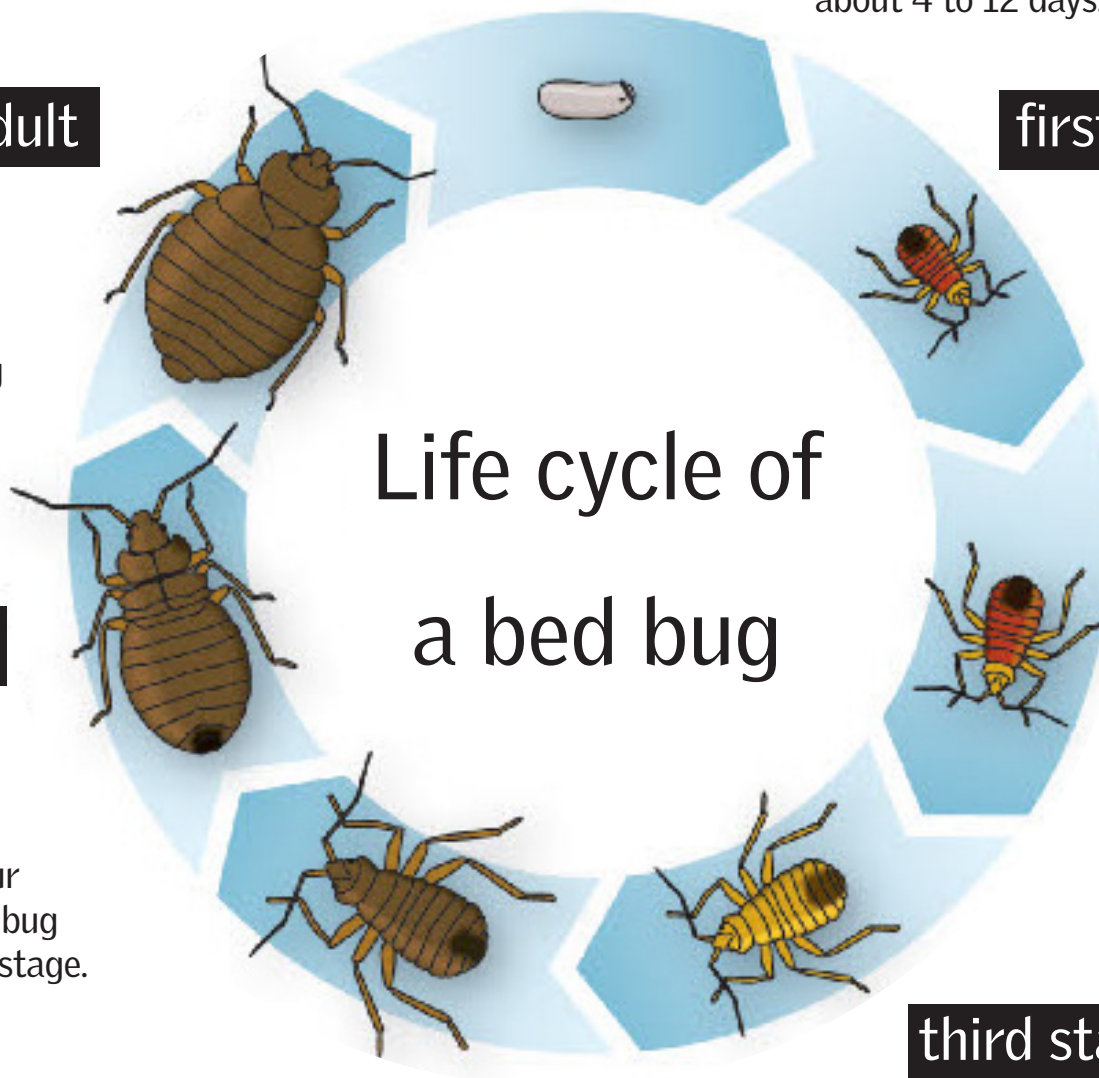
Younger bed bugs need to feed weekly.

fourth stage



DCHHS
Safe families, healthy lives.

214-819-2115 | www.dallascounty.org/hhs



adult

Adult bed bugs can survive for several months and can live long periods without feeding.

fifth stage

The feed-and-shed process repeats four times until the bed bug grows to the adult stage.

Life cycle of
a bed bug