



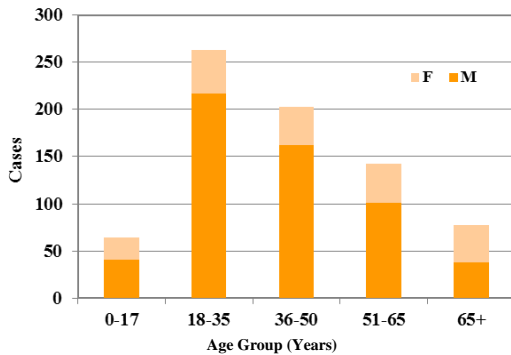
# Dallas County Health and Human Services Heat-Related Illness Surveillance Program 2011 Final HRI Season Report May 1, 2011 to October 1, 2011\*

**Figure 1: Reported Heat-Related Illness (HRI) by Type**  
*Heat-related illness data voluntarily provided by 20 area hospitals.*

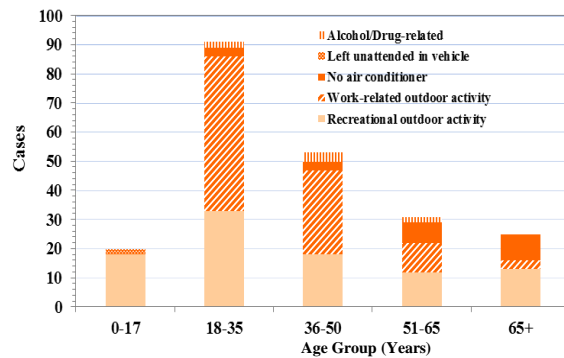
Diagnosis	Week Ending																				Total		
	5/7	5/14	5/21	5/28	6/4	6/11	6/18	6/25	7/2	7/9	7/16	7/23	7/30	8/6	8/13	8/20	8/27	9/3	9/10	9/17		9/24	10/1
Heat Cramps	1	3	3	3	9	10	19	3	14	14	14	22	27	52	32	31	28	13	1	1	1	1	302
Heat Exhaustion	0	2	0	2	6	11	28	14	19	24	28	39	32	71	30	26	35	11	3	2	2	0	385
Heat Stroke	0	0	0	1	0	3	3	2	0	0	4	3	7	6	3	1	0	1	0	1	0	0	35
Deaths	0	0	0	0	0	0	0	2	1	0	2	1	8	7	1	2	4	1	1	1	0	0	31
<b>Total</b>	<b>1</b>	<b>5</b>	<b>3</b>	<b>6</b>	<b>15</b>	<b>24</b>	<b>50</b>	<b>21</b>	<b>34</b>	<b>38</b>	<b>48</b>	<b>65</b>	<b>74</b>	<b>136</b>	<b>66</b>	<b>60</b>	<b>67</b>	<b>26</b>	<b>5</b>	<b>4</b>	<b>3</b>	<b>1</b>	<b>753</b>

\*Report revised as of December 13, 2011 for newly received confirmed HRI deaths.

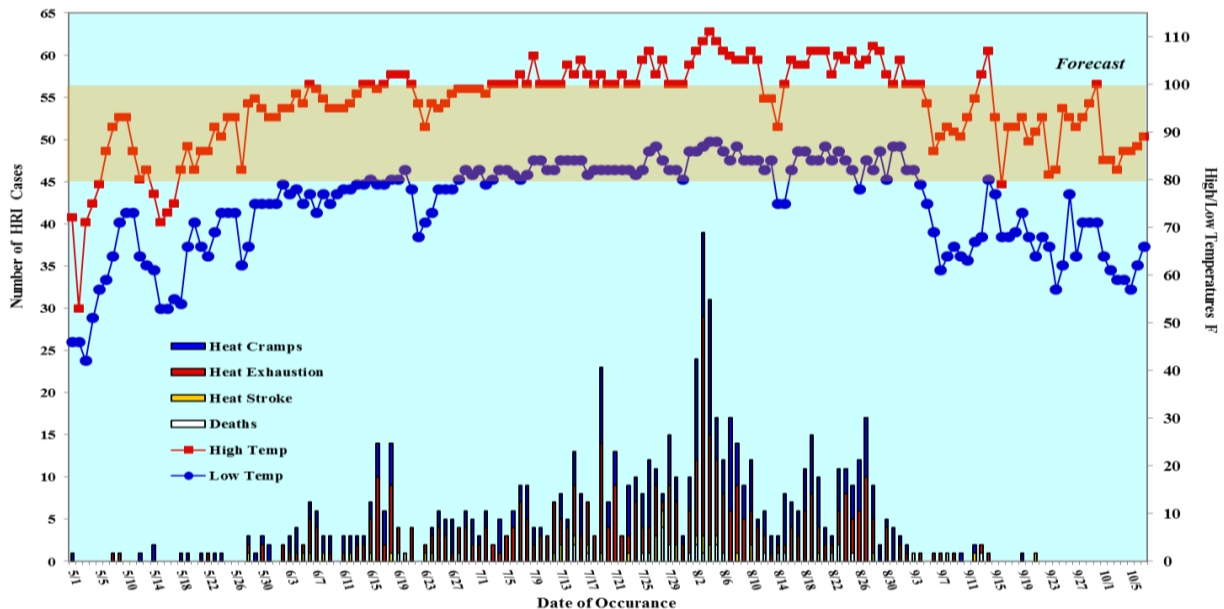
**Figure 2: HRI by Gender and Age**



**Figure 3: HRI by Contributing Factor**

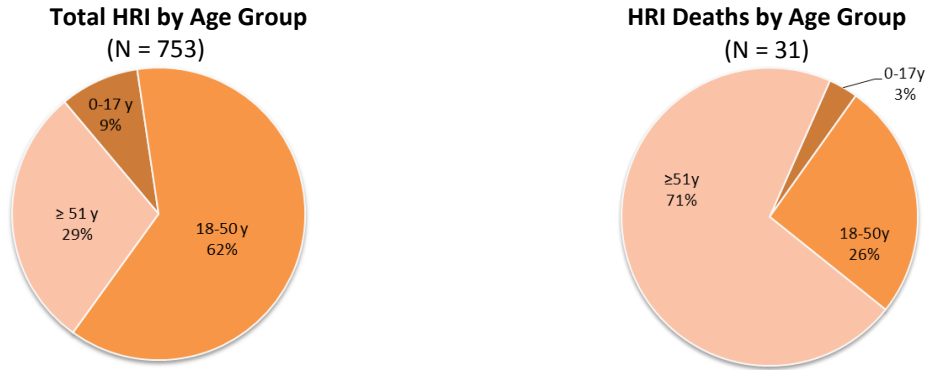


**Figure 4: Daily Temperatures versus Heat-Related Illness Reports in Dallas**

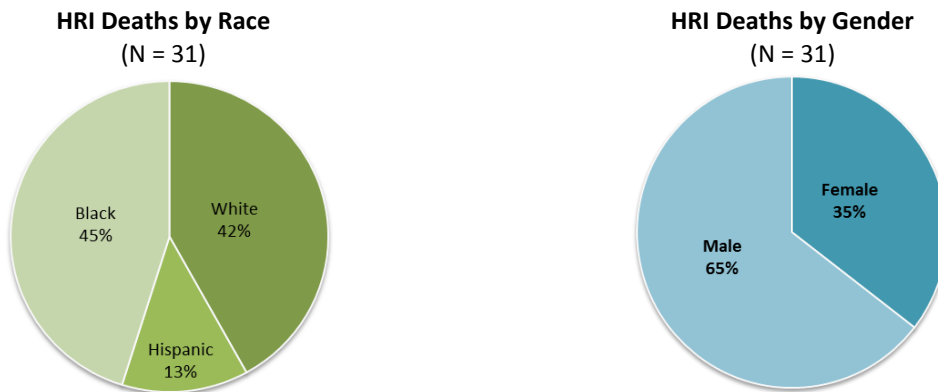


Data obtained from hospitals participating in the Electronic Surveillance System for the Early Notification of Community-based Epidemics (ESSENCE) from May 1, 2011 through October 1, 2011. Depicted are the numbers of patients presenting to Emergency Departments in Dallas County hospitals with heat-related chief complaints. Data is also obtained from reports received from the Dallas County Medical Examiner's office.

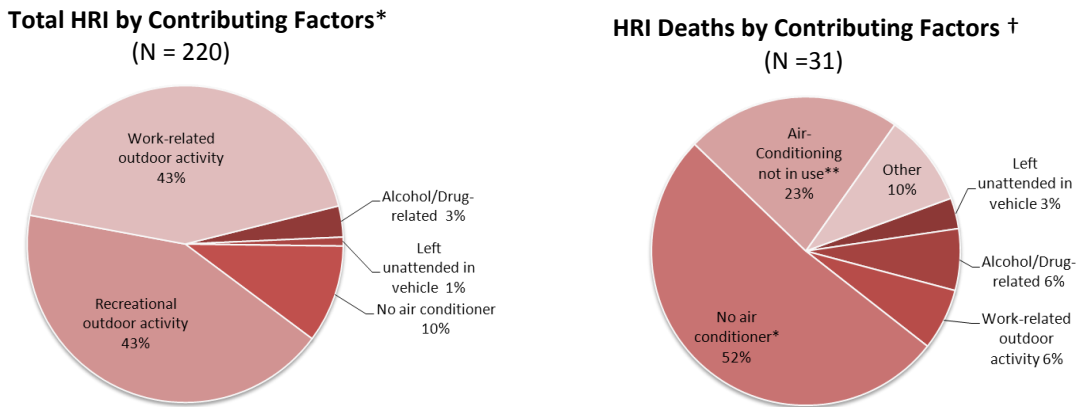
**Figure 5: Heat-Related Illnesses and Heat-Related Deaths by Age Group:  
Dallas County, May - October 2011**



**Figure 6: Heat-Related Deaths by Race and Age Group:  
Dallas County, May - October 2011**



**Figure 7: Heat-Related Illness and Heat-Related Deaths by  
Contributing Factors: Dallas County, May - October 2011**



\*As reported by hospital infection preventionists  
Data not available for all HRI cases

\*Includes: lack of A/C unit, non-working A/C unit, and lack of electricity  
\*\*Functional A/C unit present, but not turned on at time of death  
†As confirmed by Medical Examiner's records

This is the final report for the 2011 season, with new data from the County Medical Examiner's Office received 12/13/2011.