

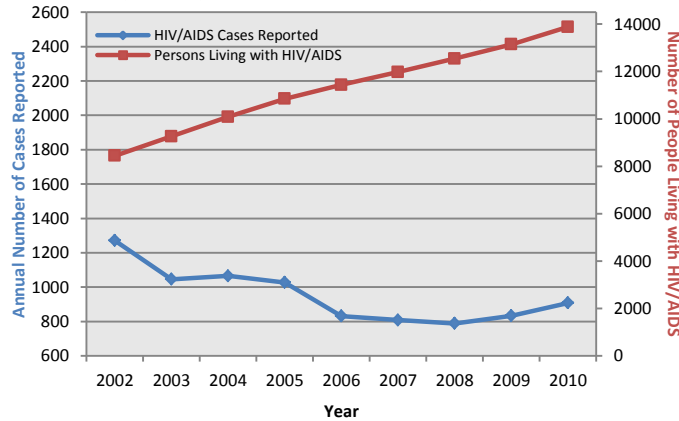


Profile of HIV/AIDS in Dallas County, 2010

Dallas County Health and Human Services, 2377 N Stemmons Fwy, Dallas, Texas 75207

New HIV/AIDS Diagnoses and People Living with HIV/AIDS, 2010				
	New HIV/AIDS Diagnoses		People Living with HIV/AIDS	
	Number	Rate per 100,000	Number	Rate per 100,000
	908	37.3	13883	569.9
Sex				
Male	720	57.9	11262	907.4
Female	188	15.9	2621	219.4
Race/Ethnicity				
Black	452	91.5	5559	1125.3
White	219	28.5	5463	708.2
Hispanic	217	21.1	2605	255.0
Other	20	14.1	256	115.4
Age Group				
0-1	1	1.2	2	2.4
2-12	0	0.0	31	7.3
13-24	232	60.1	694	180.7
25-34	270	66.2	2348	580.1
35-44	222	53.1	4127	973.7
45-54	141	46.3	4693	1550.3
55+	42	10.5	1988	485.2
Mode of Exposure				
	Number	Percent	Number	Percent
Men Who Have Sex with Men (MSM)	635	69.5%	9562	68.9%
Injection Drug Use (IDU)	38	4.2%	1012	7.3%
MSM/IDU	17	2.0%	550	4.0%
Heterosexual	216	24.2%	2657	19.1%
Perinatal	1	0.1%	86	0.6%
Other/Unknown	0	0%	16	0.1%

New HIV/AIDS Diagnoses and Cumulative Numbers of People Living with HIV/AIDS in Dallas County, 2002 - 2010



Synopsis of HIV/AIDS Trends in Dallas County, 2002 – 2010

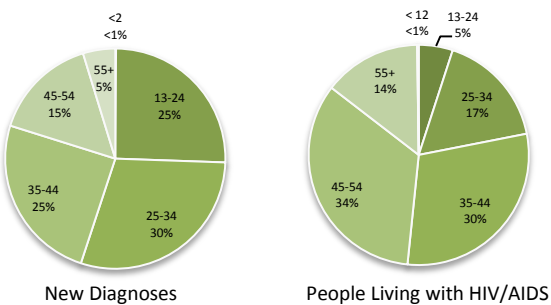
- The number of new persons diagnosed with HIV/AIDS in 2010 have decreased by 29% from 2002.
- In 2010, it was estimated that 14,000 people were living with HIV/AIDS in Dallas County, representing an increase of 39% over the past 8 years.
- From 2006 through 2009, 32.9% of all newly diagnosed persons in Dallas County progressed to a concurrent AIDS diagnosis within 12 months of initial HIV diagnosis.
- Case rates remain disproportionately higher in African Americans, similar to trends observed in larger urban areas in the US.
- New cases of HIV/AIDS are increasingly being seen in the 13 to 24 year age group, accounting for 25% of new diagnoses in 2010.

Data sources: Dallas County Health and Human Services and Texas Department of State Health Services, September 2011

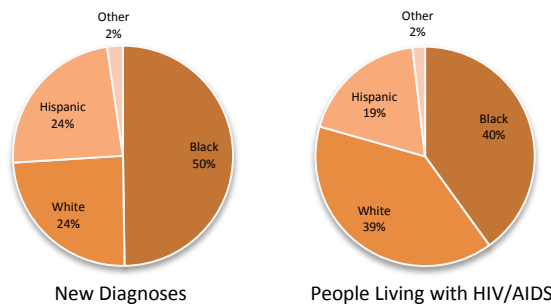
Data for new HIV/AIDS diagnoses for this report were calculated based on the earliest available diagnosis date, whether it be HIV or AIDS diagnosis. The data described here represent these new cases by year of initial diagnosis, and have been adjusted for reporting delay. Data is preliminary and is subject to updates and adjustments as needed.

Numbers of People Living with HIV/AIDS have been adjusted for deaths with existing registry information, but is subject to further adjustments with updated registry information.

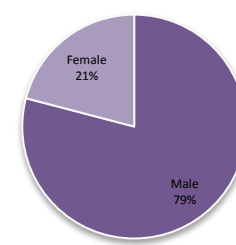
HIV/AIDS in Dallas County by Age Groups



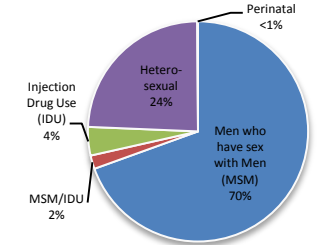
HIV/AIDS in Dallas County by Race/Ethnicity



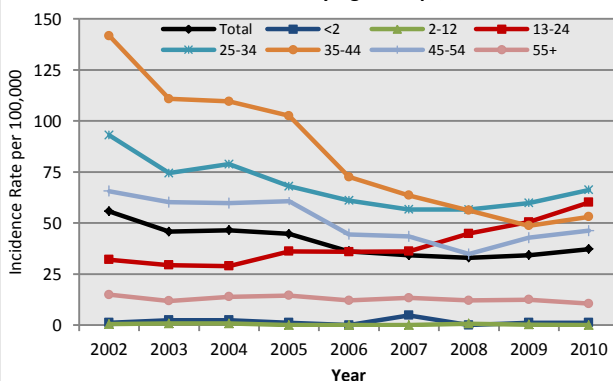
New HIV/AIDS Diagnoses by Gender, 2010



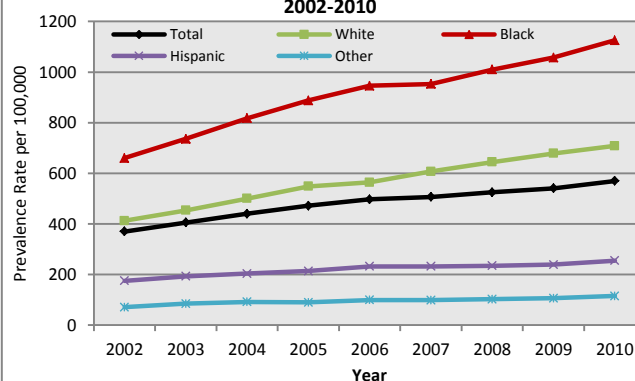
New HIV/AIDS Diagnoses by Exposure Modes, 2010



HIV/AIDS Incidence Rates by Age Groups, 2002 - 2010



People Living with HIV/AIDS Prevalence Rates by Race/Ethnicity, 2002-2010



New Diagnoses of HIV/AIDS Incidence by Race/Ethnicity, 2002-2010

