



# Profile of Sexually Transmitted Infections in Dallas County, 2007

Dallas County Health and Human Services, 2377 N Stemmons Fwy, Dallas, Texas 75207

## Reported Sexually Transmitted Infections in Dallas County, 2007

	Primary & Secondary Syphilis		Chlamydia		Gonorrhea	
	Numbers	Rate per 100,000	Numbers	Rate per 100,000	Numbers	Rate per 100,000
<b>Total</b>	149	6.3	11,922	505.2	6,005	254.5
<b>Sex</b>	<b>Numbers</b>	<b>Percent</b>	<b>Numbers</b>	<b>Percent</b>	<b>Numbers</b>	<b>Percent</b>
Male	94	63.1	2,888	24.3	3,121	52.2
Female	55	36.9	8,984	75.7	2,853	47.8
<b>Race/Ethnicity</b>						
White	25	17.0	866	10.4	406	9.1
Black	104	70.7	4,686	56.3	3,567	79.9
Hispanic	18	12.2	2,694	32.4	472	10.6
Other	0	0.0	73	0.9	21	0.5
<b>Age Groups (years)</b>						
0-9	0	0.0	26	0.2	9	0.2
10-19	20	13.4	4,277	36.0	1,930	32.4
20-29	57	38.3	6,090	51.3	2,748	46.2
30-39	34	22.8	1,130	9.5	795	13.4
40-54	31	20.8	322	2.7	415	7.0
55+	7	4.7	29	0.2	57	1.0

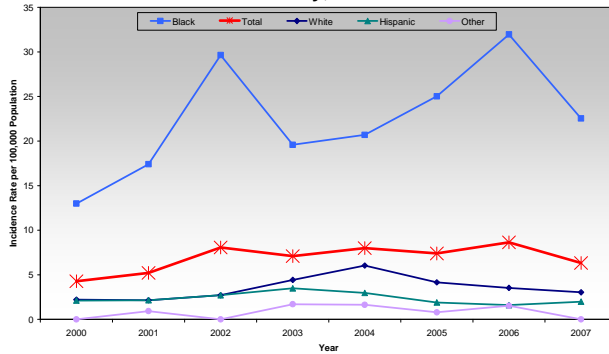
\*Sums of subgroups may not equal total because of unspecified classification categories.

## Trends in Sexually Transmitted Infections, Dallas County, 2007

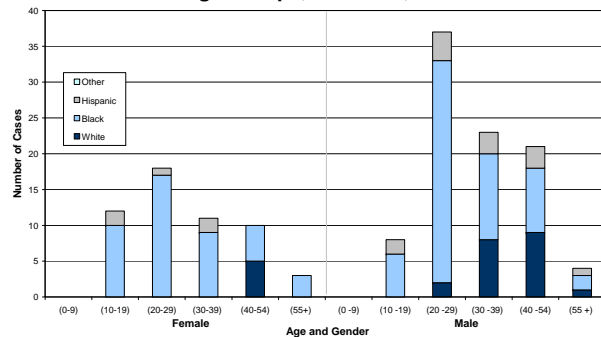
- Chlamydia continues to be the most commonly reported infectious disease in Dallas County, with highest case rates in young females.
- Chlamydia and gonorrhea rates have increased since 2006. Expanded screening efforts and the more widespread use of newer, more sensitive diagnostic tests for the infection in Dallas County may have contributed to the increases seen in 2007.
- The majority of chlamydia and gonorrhea infections occur among 15- to 24-year-olds.
- Rates of primary and secondary syphilis decreased from 2006 to 2007.

Data sources: Dallas County Health and Human Services and Texas Department of State Health Services, 11/14/2008

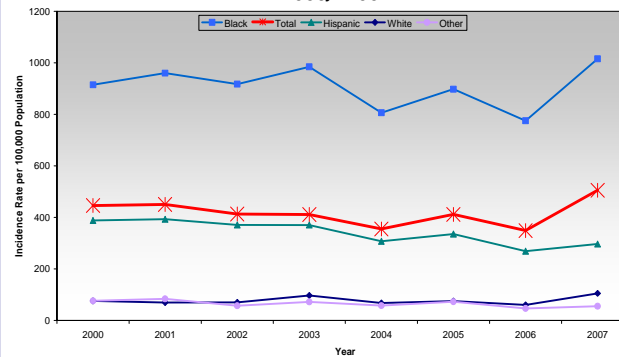
Primary and Secondary Syphilis Incidence Rates by Race/Ethnicity, 2000 - 2007



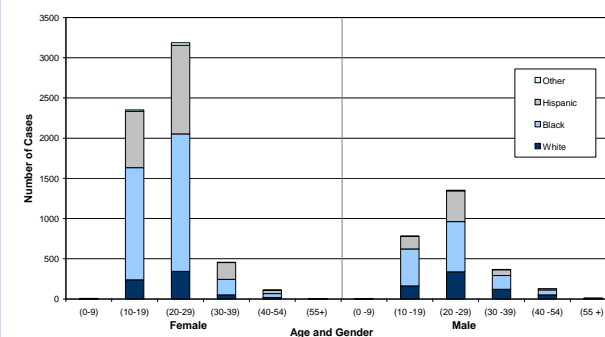
Primary and Secondary Syphilis Cases by Gender, Age Groups, and Race, 2007



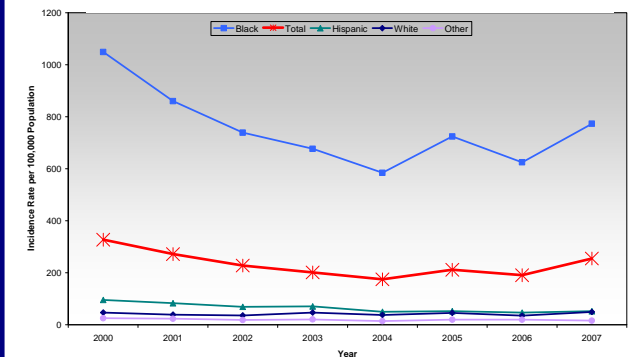
Chlamydia Incidence Rates by Race/Ethnicity, 2000 - 2007



Chlamydia Cases by Gender, Age Groups, and Race, 2007



Gonorrhea Incidence Rates by Race/Ethnicity, 2000 - 2007



Gonorrhea Cases by Gender, Age Groups, and Race, 2007

