

Probate Investigators

.....

Probate Investigators

Summary

FY2023 Adopted Budget	FY2023 Projections		FY2024 New Funding Requests
\$1,131,698	\$482,664	Operating:	\$42,000
-	-	Equipment/Furniture:	-
\$962,173	\$890,390	Personnel:	\$244,306
\$2,093,871	\$1,373,054	New Funding Total:	\$286,306

FY2024 requests represent a 13.7% increase over FY2023 adopted budget



Probate Investigators

Complete List of Requests by Priority Order

Priority	Type	Cost Center	Request Name	Qty.	FTE	Amount	Request Description
	New Position	4704	Probate Court Investigator	-	2	178,560	Each investigator is currently reviewing and investigating 1000 guardianships per year (minimum 6 hrs. per investigation). Each investigator has on average 25 difficult cases that require more than 6 hrs. per case per year. A deficit of more than 4000 hours per investigator.
	New Position	4704	Administrative Assistant	-	1	65,745	Administrative Assistant is needed to assist Director of Operations for Probate Courts and act as legal assistant/paralegal
	Operations	4704	Conference/Staff Development	1	-	12,500	New line item requested to comply with continuing educational needs of the Probate Investigators office

FY2024 REQUESTS



Probate Investigators

Complete List of Requests by Priority Order

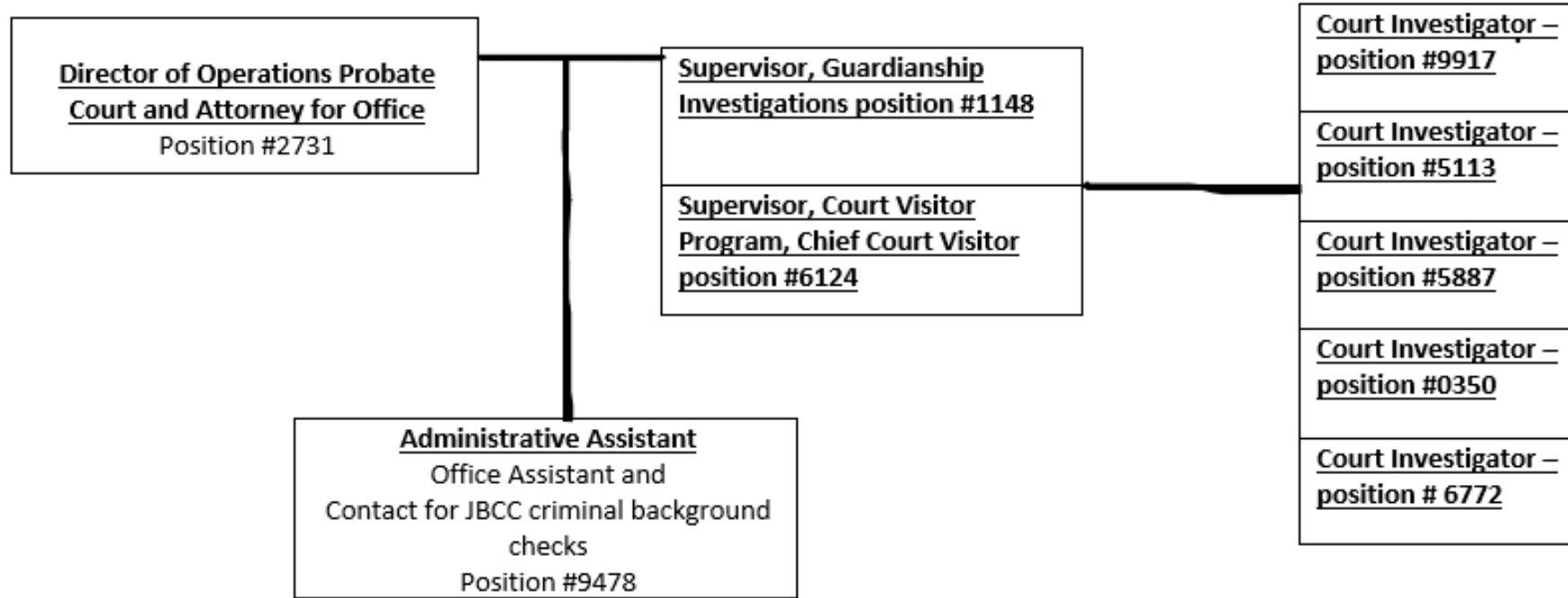
Priority	Type	Cost Center	Request Name	Qty.	FTE	Amount	Request Description
	Operations	4704	Dues & Subscriptions	1	-	4,000	New line item requested to comply with continuing educational needs of the Probate Investigators office
	Operations	4704	Business Travel	1	-	20,000	New line item requested to comply with continuing educational needs of the Probate Investigators office
	Operations	4704	Interpreters Fees	1	-	2,500	New line item needed for cost of interpreters to assist Court Investigators with their investigations for individuals who do not speak English, either as a second language or fluently
	Operations	4704	Books & Supplements	1	-	2,000	To meet expected increase in expenses
	Operations	4704	Office Supplies	1	-	1,000	To meet expected increase in expenses

FY2024 REQUESTS



Probate Investigators

Current Organizational Chart



FY2024 REQUESTS

