



DALLAS COUNTY
Criminal Justice Department

Behavioral Health Steering Committee

Thursday, April 16, 2015

Agenda

1. Welcome and Call to Order
2. Review/Approval of Minutes 1
3. BHLT & CSP Update *Charlene Randolph, Crisis Services Project* 2
4. Jail Reports
 - Hospital Movement *Brandy Coty* 5
 - Pregnant Patients *Shenna Oriabure* 6
 - Homeless Population *Christina Gonzales* 7
5. Public Defenders Report *Lynn Richardson* 9
6. SPN Reports *Metrocare, Lifenet, ABC, The Bridge* 10
7. IPS Reports *Enrique Morris* 12
8. Problem Solving Courts
 - OCR *Brandy Coty* 15
 - DIVERT *Keta Dickerson* 16
 - PROBATION *Serena McNair* 17
9. 530 Sub Committee *Keta Dickerson* 20
10. IPS Research *Enrique Morris*
11. Announcements
12. Adjourn



Behavioral Health Steering Committee

Thursday March 19, 2015

Minutes for March 19, 2015

The Behavioral Health Steering Committee did not meet on March 19, 2015. The BHSC toured the new medical facility in the jail. The tour was provided by Patrick Jones Vice President, Correctional Health Services and his staff.

Behavioral Health Steering Committee

530 Fund Sub-Committee

Minutes for April 8, 2015

There were no requests for the April 8, 2015 meeting; as such the meeting was cancelled.

Crisis Services Project
Status Report and Next Steps

April 9, 2015

Next CSP Governance Meeting: April 21, 2015. 3:30 pm- 5:00 pm at City Square (Bldg. 100)

Implementation Activities

- Transicare
 - Transportation pilot project with Public Defenders Office
 - Forensic Competency at Terrell State Hospital
- Adapt
 - Timberlawn
- Forensic Diversion Unit
 - CSP/ Metrocare conduct monthly case review
- Value Options NorthSTAR Care Coordination
- After-care engagement
 - Commissioners Court Order 3/3/2015 ; Contract with Metrocare has been executed
- Transitional housing
 - Briefed Salvation Army collaboration 4/7/2015
 - Attended Texas Homeless Housing Network Conference in Austin

IGT Status

- DY4:
 - Next match funds- January 30, 2016- approximately \$5,224,400

Metrics and Milestones

- HHSC issues with 7/30-follow baseline(CSP used state data to establish) has been resolved
- DY4:
 - Began October 1, 2014
 - Monthly Service Goal: 350 (4200 annual)
 - CJ Readmissions: Reduce by 5%
 - As of 2/28/2015, 15% reduction
 - 7-day Follow-up: 32%; 30-day Follow-up: 57%
 - As of 2/28/2015; 77%- 7 day; 68%- 30 day
- DY4 Midterm Status Report due April 30, 2015

Status Update

- Harris Logic (JIMI/ Stella)
- Central Dallas Community Development Corporation (Cottages at Hickory Crossing)
- CDC Case workers (SIP)

Anchor Information

- Wednesday, May 27 and Thursday, May 28: RHP 9 and RHP 10 Learning Collaborative Event, Hurst Convention Center

Forensic Diversion Unit (FDU) Report

	Oct-14	Nov-14	Dec-14	Jan-15	Feb-15	Mar-15	Apr-15	May-15	Jun-15
Beginning Census	40	39	38	39	37	35			
Number of Referrals Received from CSP									
Adapt	1	2	2	1					
Metrocare	0	0	0	0	2	1			
Transicare	0	0	0	0					
Number of Admissions	1	0	2	1	2	0			
Number Discharged	2	1	1	1	4	0			
Number not admitted due to:									
Client qualifies for ACT	0	0	1	0	0	0			
Client qualifies for other programs	0	0	0	0	0	0			
Client didn't meet level of need required	0	0	0	0	0	1			
Other reasons	0	0	0	0	0				
Average Service Utilization:									
Average hours seen	10.72	8.76	7.8	8.3	9.2	8.4			
Encounter Breakdown:									
Face to Face	450	245	357	497	419	336			
Service Coordination	69	35	43	76	81	69			
Number of clients accessing:									
Emergency Room (medical)	1	1	0	0	0	0			
23-hour observation (psych)	1	1	1	0	0	1			
Inpatient (med/ psych)	8	0	2	2	1	2			
Jail book-in	2	4	1	1	0	0			
Reasons for Discharge:									
Graduate	0	0	0	0	0	0			
Client Disengagement	1	0	0	0	0	1			
Extended Jail stay (case-by-case basis)	1	0	1	1	0	0			
Other Intervening factors	0	1	0	0	0	0			
End of Month Stats:									
Number of Active FDU clients end of month	39	38	39	37	35	34			
Number of Unique Consumers	0	0	0	0	0	1			
Number of clients on Waiting List	0	0	0	0	0	0			
Average Length of stay on FDU (month)	11.72	12.38	12.07	12.45	12.15	12.49			
Maximum Census	45	45	45	45	45	45	45	45	45

**Transicare Reporting
Crisis Services Project**

		2014-10	2014-11	2014-12	2015-01	2015-02
1	Beginning Census	36	34	42	49	59
2	REFERRALS	18	27	42	31	7
3	Admissions					
4	Referred Admitted	4	8	12	12	2
5	No Admit Client Refusal	1		1	1	
6	No Admit Criteria	6	7	8	9	1
7	No Admit Structural	1	6	6	4	
8	Pending	6	6	15	5	4
9	<i>PRIOR PENDING</i>					
10	Pending Admitted		5	4	7	3
11	No Admit Client Refusal		1	3		
12	No Admit Criteria	3	3		2	1
13	No Admit Structural		1	1	4	
14						
15	Total Admissions	4	13	16	19	5
16						
17	Discharges					
18	Success Transfer	1	3	2	4	8
19	DC Midterm Disengage	1		1		1
20	DC Rapid Disengage	3	1	1	1	1
21	DC Structural	1	1	5	4	5
22	Total Discharged	6	5	9	9	15
23	Active End Of Month	34	42	49	59	49
24						
25	Outcome Data					
26	<i>Terrell State Hospital Linkages</i>					
27	≤7 Connect To Prescriber	2	4	4	2	3
28	≤30 Connect To Prescriber	2				
29	Missed Metric			4		1
30	Total Released	4	4	8	2	4
31						
32	Cummulative ≤30 Connect %	50.0%	75.0%	62.5%	66.7%	68.2%
33	Cummulative ≤7 Connect %	100.0%	100.0%	75.0%	77.8%	77.3%
34	Missed Metric	0.0%	0.0%	25.0%	22.2%	22.7%
35	<i>Unduplicated Served</i>					
36	Monthly Unduplicated	57	54	73	82	66
37	DSRIP YTD Unduplicated Served	57	75	104	137	141
38						
39	<i>Encounter Data</i>					
40	F2F Encounter	297	226	451	497	376
41	Care Coord	174	138	177	209	178
42	Total	471	364	628	706	554

Competency Movement March 2015

Monthly Totals

STATUS	IN HOSPITAL	IN JAIL	Grand Total
ACTV	176	161	338
FEL	151	105	257
FEL/MISD	6	19	25
MISD	19	37	56
CLSD	6	26	32
FEL	1	15	16
FEL/MISD		3	3
MISD	5	8	13
NCVT		37	37
FEL		28	28
FEL/MISD		2	2
MISD		7	7
Grand Total	182	224	407

Hospital Movement

ACTV	176
BSSH	35
CCSH	1
KSH	7
MCSH	29
MEX	12
RGSH	1
RSH	5
SASH	3
TSH	38
UTNE	1
VSH	42
WFSH	2
CLSD	6
TSH	6
Grand Total	182

Jail Competency Activity

STATUS	New Comp Case Pending	Return from Hospital Legal Case Pending	Return from Hospital Comp Pending	Returned to jail -- Waiting for hospital bed	New comp case -- Waiting for hospital bed	Grand Total
ACTV	40	33	14	10	64	161
FEL	18	27	14	7	40	106
FEL/MISD	7	1		1	9	18
MISD	15	5		2	15	37
CLSD	6	19	1			26
FEL	1	13	1			15
FEL/MISD		3				3
MISD	5	3				8
NCVT	36	1				37
FEL	28					28
FEL/MISD	2					2
MISD	6	1				7
Grand Total	82	53	15	10	64	224

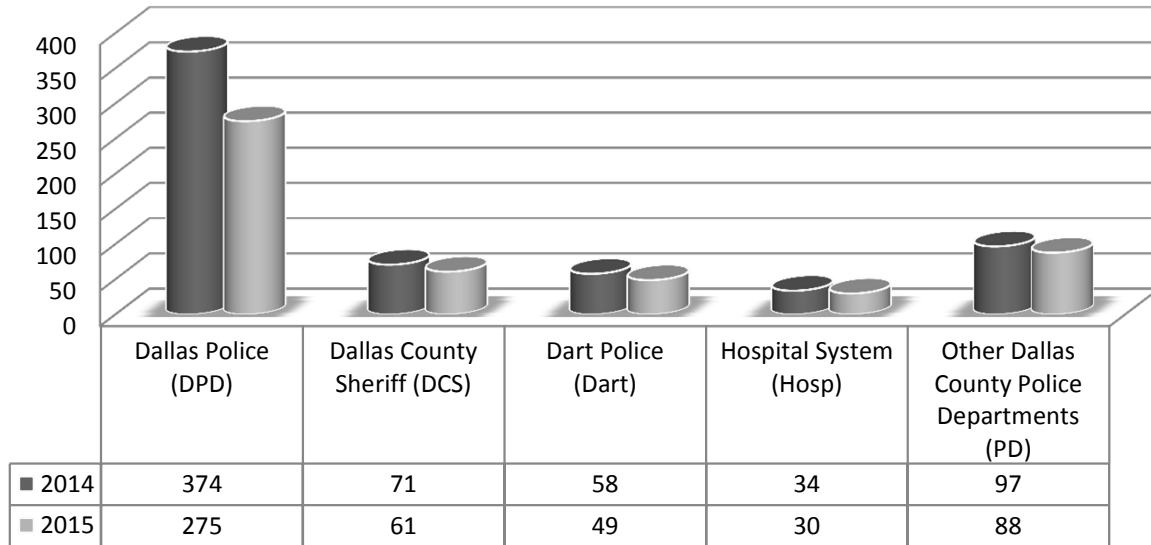
Pregnant Patients

	<i>Jan. 2014</i>	<i>Feb. 2014</i>	<i>Mar. 2014</i>	<i>Jan. 2015</i>	<i>Feb. 2015</i>	<i>Mar. 2015</i>
In Jail (atleast one day in month-not total at end of the month)	47	41	37	41	47	50
Probation Violations	15	11	9	11	9	13
New offenses/BF/IB only	30	28	23	23	29	32
Parole Violations only	-	-	-	2	4	2
Other reason in jail	2	2	5	5	5	3
Released Since Last Month	12	17	12	13	16	19
Released to SAFPF	-	-	-	1	-	-
Released to Nexus Recovery	1	3	2	5	-	1
Released to state hospital	-	-	-	-	-	1
Released to other treatment	-	-	2	-	-	-
Released to TDCJ (ID or SJ)	1	2	2	1	-	5
Released on Probation	3	1	3	1	2	5
Released on bond	4	6	1	3	6	3
Released to Other Agencies	1	3	2	2	2	1
Released for other Reasons	2	2	-	-	6	3
New Cases Since Last in Month	19	5	8	13	18	14
Emails To Court Coordinators for settings	3	2	3	1	-	-
Email Notifications to Probation	3	4	4	3	2	3
Email Notifications to TDCJ desk (Sgt. Temple)	3	1	2	2	2	2
Pregnant Patient Interviews for Referral Purposes	-	-	-	-	-	-
Nexus Notifications				-	-	-

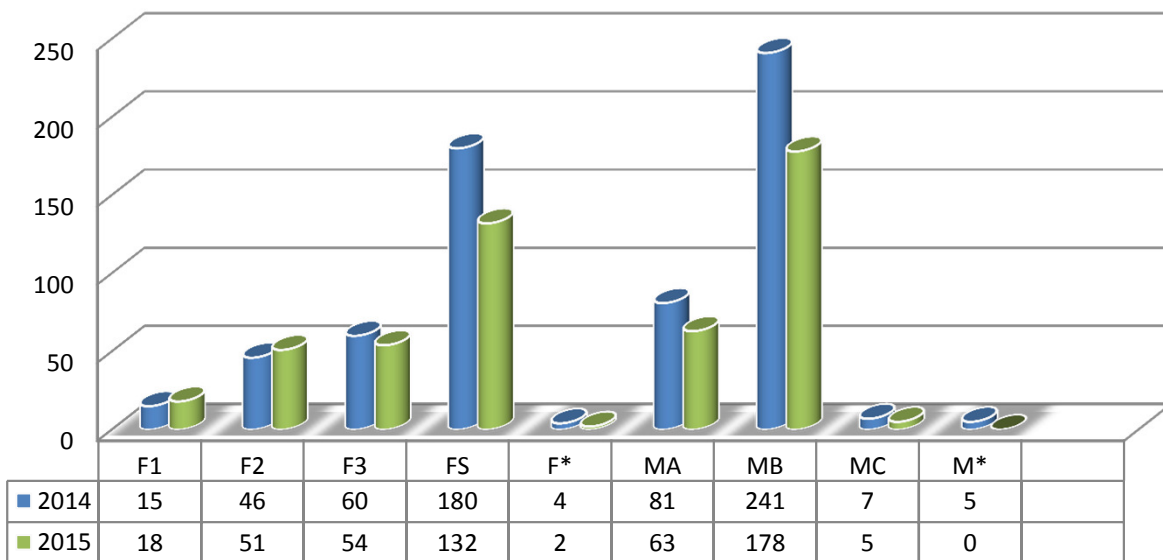
Homeless Jail Population Quarterly Review

	<u>2014</u>	<u>2015</u>
<u>Number of Arrests</u>	634	503
<u>Unique Individuals</u>	628*	499*
<u>Days in Jail</u>	25554	35873
<u>Average Number of Days</u>	41	72

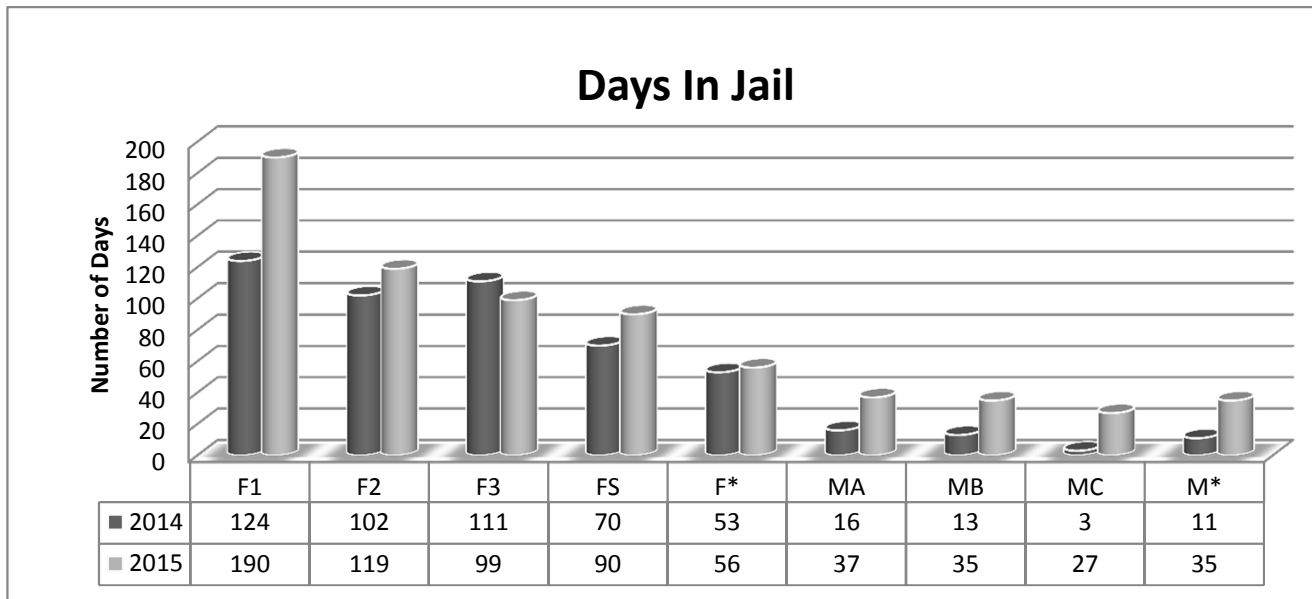
Arresting Agency



Degree of Offense



Homeless Jail Population Quarterly Review



Most Common Charges Per Offense

F1

Aggressive assault
Manufacturing and delivery of a controlled substance
Aggressive assault of a child

F2

Aggressive assault w/ deadly weapon
Burglary of habitation
Robbery

F3

Assault of family member impeding breathing
Assault of a public servant
Obstruction or retaliation

FS

Prostitution w 3 or more prior convictions
Possession of a control substance 1< 1G
Theft <\$1,500 w/ 2 or more previous convictions

F*

Possession of marijuana <2 oz.

MA

Assault causing bodily injury
Prostitution
Fail to ID / Resisting arrest

MB

Criminal trespass (10% are rearrested)
Theft >=\$50<\$500
Possession of marijuana <2oz

Most Common Releases Per Degree of Offense

F1

Released to TDCJ
Released on Probation
Served Time

F2

Released to TDCJ
Served Time
Special Program/MH Facility

F3

Released to TDCJ
Served Time
Released to Special Program/MH Facility

FS

Released to TDCJ
Served Time
Special Program/MH Facility

F*

Served Time

MA

Served Time
Special Program/MH Facility
Posted Bond

MB

Served Time
Special Program/MH Facility
Posted Bond

Public Defender

HARRY INGRAM				FY2015 ATLAS STATISTICS										203/HAWTHORNE			
MONTH	BEGINNING # OF PENDING CASES	+NEW CASES RECEIVED THIS MONTH	=TOTAL CASES	TBJ	TBC	PLEAS	REV	GRADUATES	PROBATION MODIFICATIONS	DISMISSALS	OTHERS	TOTAL DISPOSITIONS	ENDING # PENDING CASES **	CURRENT ATLAS PARTICIPANTS	CURRENT PARTICIPANTS IN CUSTODY	FORMER ATLAS PARTICIPANTS	BOND
March	58	6	64	0	0	1	1	0	0	5	0	7	57	27	5	0	22

HARRY INGRAM				FY2015 MISDEMEANOR MENTAL HEALTH COURT STATS									CCCAP1/WADE	
MONTH	BEGINNING # OF PENDING CASES	Rediverts	+NEW CASES RECEIVED THIS MONTH	=TOTAL CASES	TBJ	TBC	PLEAS	DISMISSAL	OTHER	TOTAL DISPOSITIONS	ENDING # PENDING CASES **	CURRENT PARTICIPANTS	NUMBER OF GRADUATES	BOND** *
March	103	0	11	114	0	0	3	3	0	6	108	52	2	52

March 2015 FY2015 MHPD STATS												
MONTH	BEGINNING # OF PENDING CASES	+NEW CASES RECEIVED THIS MONTH	=TOTAL CASES	TRIALS	PLEAS	COND. DISM.	REVO-CATION	DISMISSALS	INCOMP ETENT	REFE RRAL S	OTHER COUNSEL APPT.	TOTAL CLOS ED
R. LENOX	101	35	136	0	13	7	1	1	3	0	6	31
L. TAYLOR	224	29	253	0	4	2	3	3	0	0	5	17

MARIUM UDDIN FY2015 FELONY COMPETENCY STATISTICS															
MONTH	BEGINNING # OF CASES	NEW CASES THIS MONTH	TBJ	TBC	Alt. Trial Dispos.	PLEAS	REVO-CATIONS	DISMISSALS	PROBATION	COMP. HRG.	EXTENSIONS	CIVIL COMM IT.	MHMR REFER RAL	CONSULTS	ENDING # OF PEOPLE IN OCR
March	113	9	0	1	0	4	0	4	1	9	4	0	0	0	10

MARIUM UDDIN FY2015 MISDEMEANOR COMPETENCY STATISTICS															
MONTH	BEGINNING # OF CASES	NEW CASES THIS MONTH	TBJ	TBC	Alt. Trial Dispos.	PLEAS	REVO-CATIONS	DISMISSALS	PROBATION	COMP. HRG.	EXTENSIONS	CIVIL COMM IT.	MHMR REFER RAL	CONSULTS	ENDING # OF PEOPLE IN OCR
March	84	23	0	0	0	0	0	35	0	24	4	1	0	0	17

March 2015 MI Court												
MONTH	TOTAL NEW CASES RECEIVED	GREEN OAKS	MEDICAL CENTER MCKINNEY	PARKLAND	TIMBERLAW N	HICKORY TRAILS	ZALE LIPSHY	STATE HOSPITAL	HEARINGS HELD	NO CONTEST COMMIT	CONTESTED COMMIT	FORCED MEDS
L. WALTON-B	231	139	21	19	44	4	4	0	2	0	0	0
L. TAYLOR	67	0	16	0	51	0	0	0	5	0	5	0

RANDA BLACK							MI COURT	
MONTH	NEW CLIENTS	PROBABLE CAUSE HEARINGS HELD	NO CONTEST COMMIT TO TSH	CONTESTED COMMIT TO TSH	RECOMMITEMENTS	MEDICATION HEARINGS	OUTPATIENT	JURY TRIAL
March	103	5	2	15	7	22	0	0

NAME OF MHMR PROGRAM: Metrocare Services
PROGRAM: SNOP

MONTH OF REPORT: 03_2015

DATE SUBMITTED: 04_2015

NEW

	ATLAS	Post-DDRTC	STAC	Misdemeanor	PRIDE	DDRTC	PROBATION ICM	PAROLE ICM
1. Number of Offenders served at the beginning of the month:	16	30	27	14	0	53	77	102
2. Number of Referrals received:	0	8	10	4	5	15	6	7
3. Number of Assessments:	0	8	10	4	5	15	6	7
4. Number of Admissions:	0	8	10	4	5	15	6	7
5. Average length of stay by months:	3.13	2.66	1.61	1.82	NEW	1.21	4.4	3.51
5. a. Average hours served:	6.86	4.19	4.07	5.45	NEW	13.39	3.87	3.01
6. Services Utilized:	0	0	0	0	0	17	2	0
6. a. Visits to ER (medical)	0	0	0	0	0	0	0	0
6. b. 23-hour Observation (psych)	0	0	0	0	0	16	2	0
6. c. Inpatient Stay (med/psych)	0	0	0	0	0	1	0	0
6. d. Jail days less than 30 days:								
7. Number of Discharges:	4	8	9	0	0	15	21	8
7. a. Terminations (jail more than 30days)	0	1	1	0	0	0	0	0
7. b. Warrants/Suspension: (medical d.c.; abscond)	1	6	2	0	0	9	0	3
7 c. Graduates	3	1	6	0	0	6	21	5
8. Number of Offenders served at the end of month:	12	30	28	18	5	53	62	101
9. Total served in the month:	16	38	37	18	5	68	83	109
10. Number of Offenders on the waiting list:	0	0	0	0	0	0	0	0
11. Minimum/Maximum Census per FTE allocation	20-25	20-25	30-38	30-38	20-25	60	100-125	100-125
12. Vacancy(s)	0	0	0	0	0	0	1	0

Each FTE covers 20-25

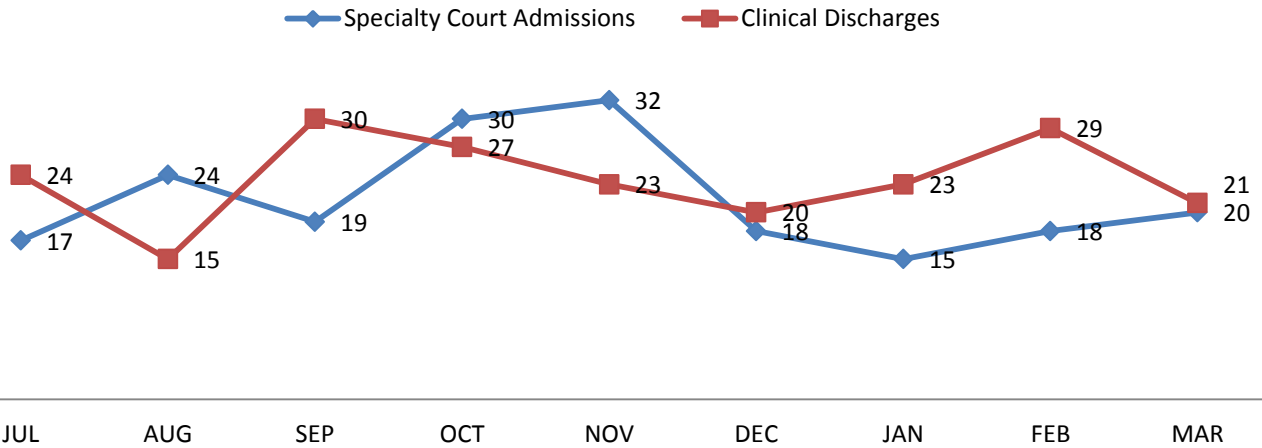
The Bridge

The Bridge	2014	2014	2014	2014	2014	2014	2014	2014	2014	2014	2015	2015	2015
	March	April	May	June	July	August	Sep.	Oct.	Nov.	Dec.	Jan.	Feb.	Mar.
Bridge Emergency Shelter	269	392	468	484	502	374	322	333	373	345	354	288	287
Bridge Transitional Shelter	116	115	125	117	120	114	116	122	113	109	119	111	114
Direct Referrals to Other Shelters	586	515	734	739	815	609	576	530	605	597	657	574	595
Care Management	872	837	858	938	943	853	932	855	798	834	870	829	880
Job Ready (Workforce)	116	91	83	84	87	80	100	95	81	91	108	96	112
Job Placements (Workforce)	12	9	12	28	28	20	29	27	19	18	23	23	29
Housing Placements	22	23	33	35	31	27	19	23	27	21	37	27	32
Lifenet Mental Health Serv.	406	434	401	418	443	387	408	408	332	369	389	329	375
Lifenet Chemical Dep. Serv.	152	166	146	187	173	150	138	158	104	150	150	194	110
Parkland Clinic*	556	443	535	552	747	676	802	837	641	819	789	740	878
VA Services	50	55	61	48	55	46	45	29	36	28	39	43	30
Judicial Re-Entry	4	4	2	5	2	6	9	10	11	8	3	6	9
Jail Release (General)	4	3	2	0	1	5	1	1	1	0	1	9	17
Triage Assessments*	260	319	432	527	573	510	495	457	497	496	544	451	505

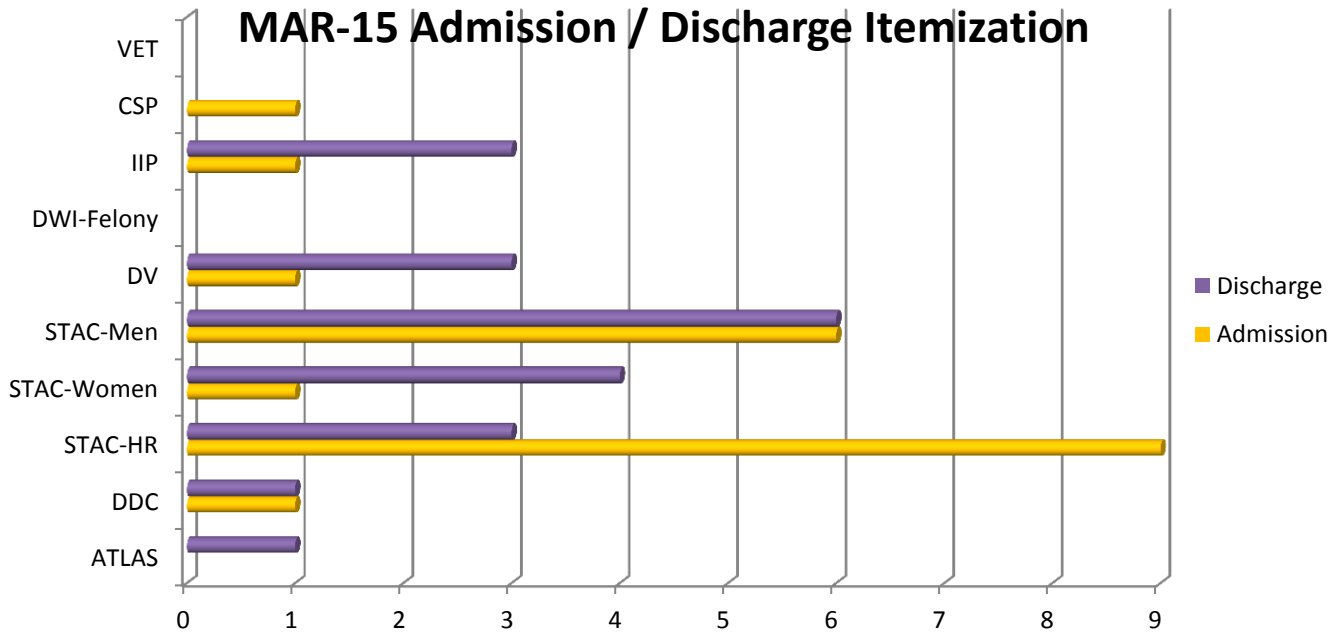
Each category represents *unduplicated guests* , not totals served.

*exception - Parkland Clinic and Triage Assessment numbers are for totals served.

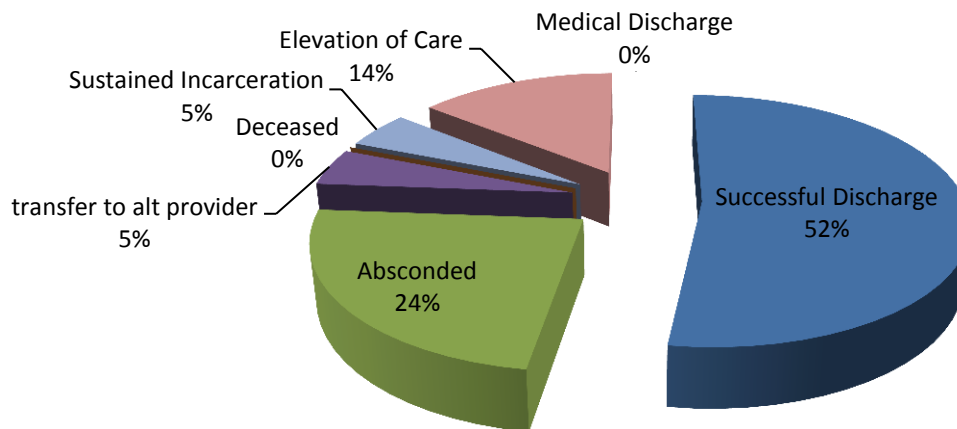
Specialty Court Admissin / Discharge Trend



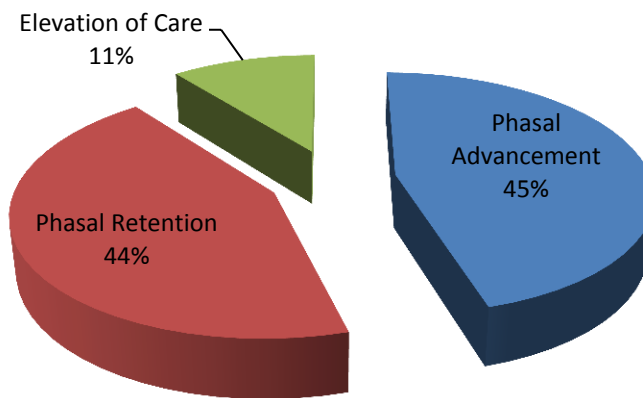
MAR-15 Admission / Discharge Itemization



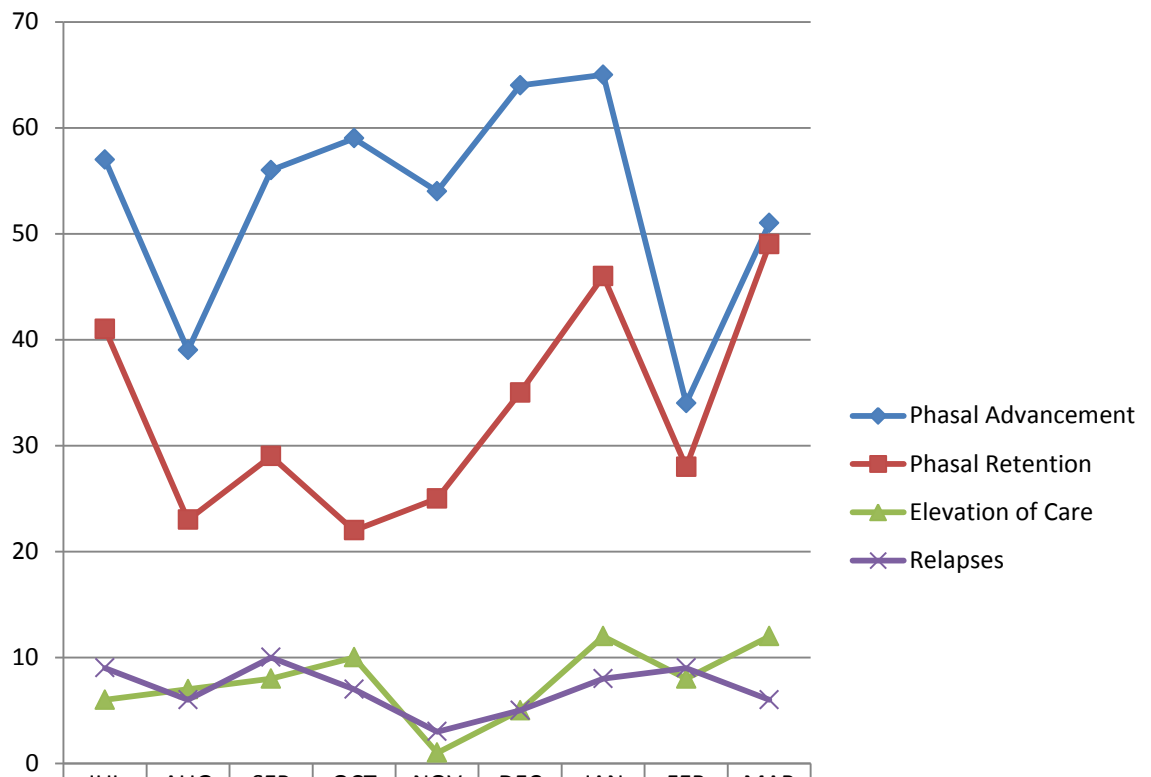
MAR-15 Outcome Distribution



MAR-15 Specialty Court Treatment Program Progression Rate

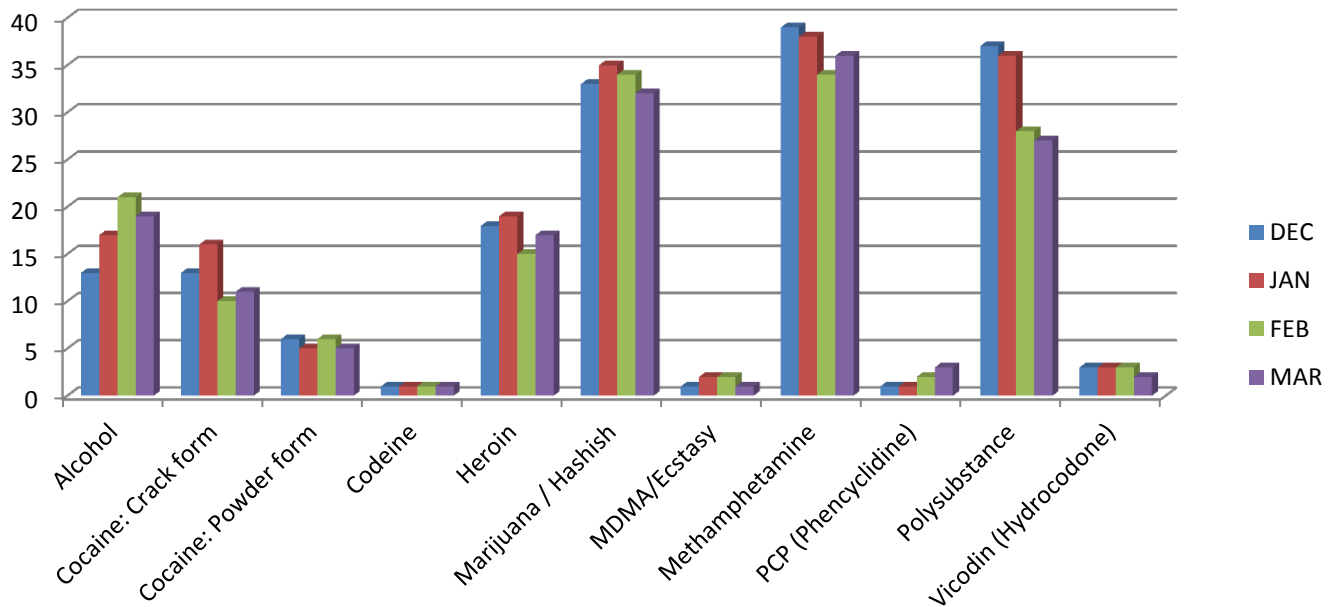


Specialty Court Treatment Program Progression Trend

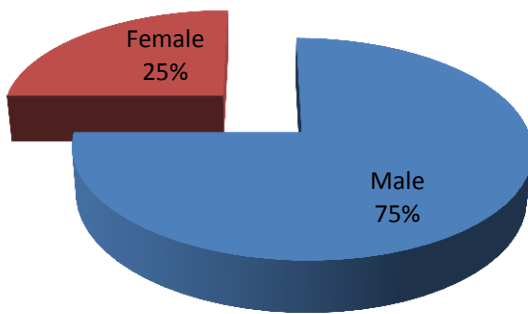


	JUL	AUG	SEP	OCT	NOV	DEC	JAN	FEB	MAR
Phasal Advancement	57	39	56	59	54	64	65	34	51
Phasal Retention	41	23	29	22	25	35	46	28	49
Elevation of Care	6	7	8	10	1	5	12	8	12
Relapses	9	6	10	7	3	5	8	9	6

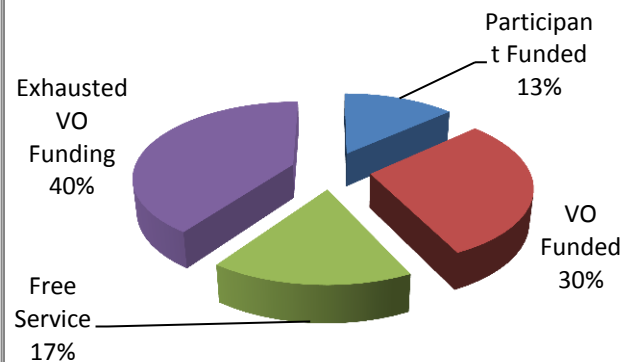
Specialty Court Participants by Reported/Observed Drug of Choice



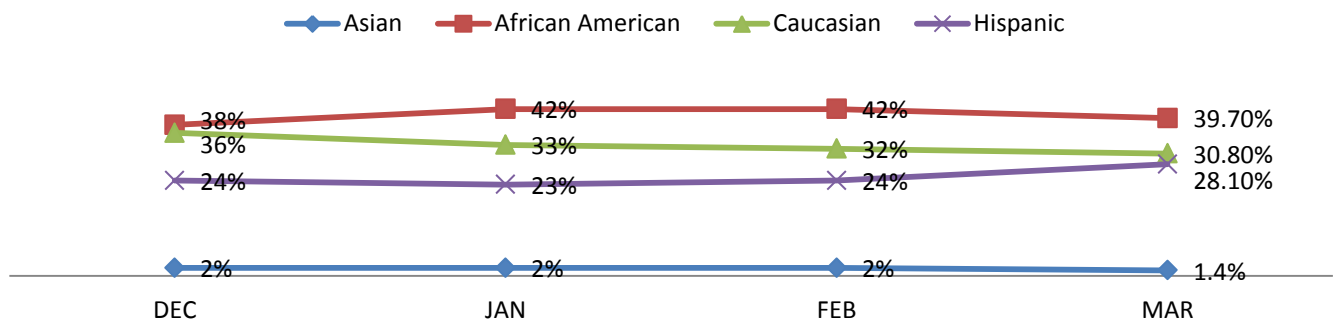
MAR-15 Specialty Court Participants by Gender



MAR-15 Specialty Court Participants by Funding Status



Specialty Court Participants by Ethnicity



Outpatient Competency Restoration Monthly Totals													
	Jan	Feb	Mar	April	May	June	July	Aug	Sept	Oct	Nov	Dec	Total
Beginning of Month	28	22	23		0	0	0	0	0	0	0	0	
<u>Misdemeanor</u>	13	12	12										
Placed in OCR	3	5	5										13
Pending	2	1	0										3
Homeless @ admit	3	3	3										9
Dispo	4	5	6	0	0	0	0	0	0	0	0	0	15
Outpatient to Inpatient	0	0	1										1
Abscond	0	1	3										4
Restored and Dismissed	4	1	2										7
Dismissed	0	3	0										3
<u>Felony</u>	15	10	11										
Placed in OCR	2	2	2										6
Pending	0	0	0										0
Homeless @ admit	1	1	0										2
Dispo	7	1	2	0	0	0	0	0	0	0	0	0	10
Outpatient to Inpatient	0	0	0										0
Abscond	0	1	0										1
Restored and Dismissed	7	0	2										9
Dismissed	0	0	0										0
End of Month	22	23	22	0	0	0	0	0	0	0	0	0	67

DIVERT Numbers

FY15	Start of Month	New admissions	DAOpt-out	Unsuccessful discharge	Graduates	End of Month
Sept. 14	136	14	0	0	11	139
Oct. 14	139	7	0	2	0	144
Nov. 14	144	9	0	6	0	147
Dec. 14	147	10	0	0	6	151
Jan. 15	152	6	0	1	7	150
Feb. 15	150	6	0	4	0	152
Mar. 15	153	3	0	6	7	143

Program Max 150

* No new admissions allowed until mid-April to allow new staff to become acclimated to program.

ATLAS Court

FY15	Start of Month	New admissions	DA Opt-out	Unsuccessful discharge	Graduates	End of Month
Dec. 14	24	5	0	2	0	27
Jan. 15	27	8	0	4	0	31
Feb. 15	31	0	0	3	0	28
Mar. 15	28	2	0	2	2	26
Apr. 15						
May-15						
Jun. 15						
Jul. 15						
Aug. 15						
Sept. 15						
Oct. 15						
Nov. 15						
Dec. 15						

Program Max:

MHJD Court

FY15	Start of Month	New admissions	DA Opt-out	Unsuccessful discharge	Graduates	End of Month
Dec. 14	45	6	0	2	6	43
Jan. 15	43	12	0	3	2	50
Feb. 15	50	4	0	1	6	47
Mar. 15	47	8	0	2	2	51
Apr. 15						
May-15						
Jun. 15						
Jul. 15						
Aug. 15						
Sept. 15						
Oct. 15						
Nov. 15						
Dec. 15						

Program Max:

STAC Court

FY15	Start of Month	New admissions	DA Opt-out	Unsuccessful discharge	Graduates	End of Month
Dec. 14	26	0	0	3	0	23
Jan. 15	23	0	0	2	2	19
Feb. 15	19	1	0	2	0	18
Mar. 15	18	5	0	5	5	13
Apr. 15						
May-15						
Jun. 15						
Jul. 15						
Aug. 15						
Sept. 15						
Oct. 15						
Nov. 15						
Dec. 15						

Program Max:

STAR Court

FY15	Start of Month	New admissions	DA Opt-out	Unsuccessful discharge	Graduates	End of Month
Dec. 14	23	0	0	0	5	18
Jan. 15	18	0	0	1	0	17
Feb. 15	17	0	0	0	0	17
Mar. 15	17	0	0	2	0	15
Apr. 15						
May-15						
Jun. 15						
Jul. 15						
Aug. 15						
Sept. 15						
Oct. 15						
Nov. 15						
Dec. 15						

Program Max:

530 Fund FY 15
Balances/Expenditures
Summary Page

Month	Beg. Bal. Misd 4031	Expense	Credit	End Bal	Beg. Bal Fel 4020	Expense	Credit	End Bal
Oct	\$144,700.15	\$23,612.53	\$8,424.62	\$129,512.24	\$61,572.46	\$17,286.00	\$3,854.01	\$48,140.47
Nov	\$129,512.24	\$5,243.66	\$6,982.21	\$131,250.79	\$48,140.47	\$0.00	\$3,763.56	\$51,904.03
Dec	\$131,250.79	\$5,818.67	\$8,642.37	\$134,074.49	\$51,904.03	\$0.00	\$4,037.01	\$55,941.04
Jan	\$134,074.49	\$8,609.03	\$7,362.34	\$132,827.80	\$55,941.04	\$2,965.00	\$3,264.81	\$56,240.85
Feb	\$132,827.80	\$30,181.18	\$8,782.76	\$111,429.38	\$56,240.85	\$2,055.00	\$4,750.36	\$58,936.21
Mar	\$111,429.39	\$5,257.21	\$9,823.22	\$115,995.40	\$58,936.21	\$627.40	\$5,126.30	\$63,435.11
Apr	\$0.00	\$0.00		\$0.00	\$0.00	\$0.00		\$0.00
May	\$0.00	\$0.00		\$0.00	\$0.00	\$0.00		\$0.00
June	\$0.00	\$0.00		\$0.00	\$0.00	\$0.00		\$0.00
July	\$0.00	\$0.00		\$0.00	\$0.00	\$0.00		\$0.00
Aug	\$0.00	\$0.00		\$0.00	\$0.00	\$0.00		\$0.00
Sep	\$0.00	\$0.00		\$0.00	\$0.00	\$0.00		\$0.00
Current Totals	\$132,827.80	\$78,722.28	\$50,017.52	\$111,429.38	\$56,240.85	\$22,933.40	\$24,796.05	\$58,936.21
Ending Bal Misd/Fel	\$170,365.59	Avg Mo. Credit	\$8,336.25			Avg Mo. Credit	\$4,132.68	

Comments: During this reporting period, \$5257.21 was used for MH Specialty Court Coordinators' salary, and TADCP travel of \$627.40 came out of 4020.