



**DALLAS COUNTY**  
**Criminal Justice Department**

**Behavioral Health Steering Committee**

Thursday, August 17, 2017

**Agenda**

1. Welcome and Call to Order *Judge Kristin Wade*
2. Review and approval of minutes from June 2017
3. Caruth Smart Justice Grant Update (*Mike Laughlin/MMHPI*)
4. SAMHSA Update *Laura Edmonds*
5. 530 Sub Committee\* *Laura Edmonds*
6. BHLT & CSP Update *Charlene Randolph*
7. Jail Reports
  - Hospital Movement\* *Janine Capetillo*
  - Pregnant Patients *Shenna Oriabure*
  - Veterans Reports *Shenna Oriabure*
  - Homeless Report *Shenna Oriabure*
  - Northstar Matches *Mike Laughlin*
8. Public Defenders Report *Lynn Richardson*
9. District Attorney's Report *Lee Pierson*
10. Provider Reports
  - The Bridge *Kelly Kane*
  - Metrocare *Crystal Garland*
  - IPS Reports *Enrique Morris*
11. Problem Solving Courts
  - Outpatient Competency *Janine Capetillo*
  - DIVERT *Keta Dickerson*
12. Specialty Courts CSCD *Serena McNair*
13. Announcements
14. Adjourn

**\*Action and Discussion Items**



# DALLAS COUNTY, TEXAS

## Minutes of the Behavioral Health Steering Committee (BHSC) Meeting Thursday, June 15, 2017

### Call to order and Introductions

The meeting was called to order by Judge Wade at 8:35 am. 31 staff and agency representatives/providers were in attendance with names available on the meeting sign-in sheet.

### Minutes review and approval

The **minutes** from the last bi-monthly BHSC meeting held on April 20, 2017, were reviewed and approved following a motion and second by Harry Ingram and Crystal Garland. No discussion or corrections. Motion unanimously passed and minutes approved without objection.

**No guest speakers presented on this occasion.**

**Caruth Grant:** Mike Laughlin provided a summary update for April/May from the MMHPI Smart Justice Grant materials in the packet (pages 5-8) regarding the Caruth Smart Justice Grant. The 5-year, \$7 million Implementation Grant submitted by MMHPI was awarded in October 2016, leading to the \$1.174 million sub-grant to Dallas Co. in Jan. 2017 to address Intercepts 2-4, and part of 5, and Mike gave an update on the current status and upcoming actions related to the award. The beta test of the project began on April 17<sup>th</sup>, and all the workgroups and sub-teams for the Intercepts 2-4 continue to meet/complete pre-implementation tasks related to procedures/forms, Court orders, space/staff preparations, modified resource allocations, training curriculums/plans leading. Additionally, MMHPI continues to meet and work with community providers to build up treatment resources related to Intercept 5 for referral and treatment connection upon release. MMHPI staff continues to coordinate with the City and others on Intercept 1 (police and EMT response options) with the first agreements with them are going for approval before the full City Council this month. They have established job descriptions, and are in the process of preparing to hire staff for the emergency response RIGHT Care Teams.

During this portion of the agenda Judge Wade asked how much of the MHPR Bond information is getting into AIS, which was uncertain and limited. She advises that this needs attention so that all the stakeholders touching this process in the Jail/Courts (particularly the attorneys) have rapid/reliable access to the information needed to coordinate well and move the process along timely. This was agreed by all to be a task focus moving forward. In the meantime, the Public Defender's Office is helping to communicate legal/attorney appointment information to others in the system.

### Data and reports for BHSC – Judge Wade

**Program and Department Updates:** The program and outcome data, updates, and reports were presented and accepted by relevant dept./agency staff for the SAMHSA Grant, 530 Subcommittee, BHLT/CSP, Public Defenders, District Attorneys, CJ Dept. Jail reports, as well as provider reports (The Bridge, Metrocare, and IPS), and the various Problem Solving and Specialty Courts (see packet for details).

The SAMHSA Grant update verbally given by Laura Edmonds on the data and activities (see packet pgs. 9-10).

Laura Edmonds also presented a summary of current 530 Subcommittee activities and expenses. There was no May Committee meeting or minutes to review/report since they meet now semi-monthly. Laura also advised that the 530 Subcommittee needed approval for \$705.46 expenditure from allotted incentives to STAC Court for graduation and 10-year anniversary celebration. Motion made and seconded by Leah Gamble and Dr. Jill Johansson Love. Motion unanimously passed and approved without discussion or objection.

Laura also advised that on May 25<sup>th</sup> the Governor's Office did indeed formally approve the Felony MH Jail Diversion Court operated by Judge Wade as an approved Specialty Court! Judge Wade also mentioned we need to get the DA's Office to use more incentives for participation.

Review and Discussion by all of the great work and benefit from the Specialty Court Conf. debriefing in the Central Jury Room on May 5<sup>th</sup>. The 10 Key Components and all the ideas and materials were shared with lunch provided. The 530 Subcommittee will also have a lunchtime training Delightful Discussions on Drug and Alcohol Testing tomorrow, June 16<sup>th</sup> in the Pretrial Conference Room which will include also include CSCD drug testing staff presentations. Judge Wade strongly encouraged we use more interns and get them involved in trainings like these too.

**CSP stats and metrics** for April/May were presented/ reviewed by Alyssa and Charlene, and are exceeding year-to-date outcomes with all other service goal metrics met. See packet pgs. 9-25 for details. There continues to be an uptick in the numbers due to the new Caruth MH PR Bonds.

Charlene also advised that the Terrell Hospital Connection Project for improved release planning continues to go well.

Charlene and CSP providers continue to communicate with NTHBA to facilitate the recent transition planning since the care manager and Specialty Court Aftercare Engagement Packages currently go through CSP and will now be coordinated through NTBHA. Process continues to go well. HHSC has submitted request for 21 month extension of CSP funding with more information to follow late this year.

Lengthy discussion by several was made regarding the temporary \$250,000 in funds for temporary housing assistance to be expended by August 31<sup>st</sup>. Charlene advised there would be more training to Court staff by Laura on this coming soon. It was also mentioned the Public Defenders High Utilizer Project might also benefit from this. Crystal Garland provided updated information on access to this with eligibility by homeless/imminently homeless, no income, licensed boarding home, and active in services. Marlene Buchanan mentioned that if family will take them in at jail release, they will not qualify. Enrique Morris at IPS Recovery mentioned they have housing navigation help too and to go to [www.ipsrecovery.com](http://www.ipsrecovery.com) Kayla mentioned that holds by ACS for treatment needs immediate prescriber contact, and IPS and Metrocare attested they have same day prescriber contact process in place. Judge Wade questioned the consistency on that, and all agreed to do what it takes to ensure that.

John Henry with NTBHA discussed the window to get verification documents and that state has liberal view on this with ability to take attestations in lieu of documents when needed if the person is in the catchment. Alyssa also emphasized that the clients need to have very specific jail release information available at time of presentation to clinic in order for acceptance and smooth transition. John also reminded that with the new NTBHA transition it is now CMHP not Value Options responsibility to certify/enroll clients. Several also strongly encouraged to leverage the Court's valuable position/authority to get information/documents timely to the CMHP for qualification/enrollment. Crystal also noted and emphasized that Case Managers are doing very well on the initial enrollment/qualification process, but not as well at the required one-year updates and reauthorizations.

**Jail and hospital movement, pregnant defendants, and homeless data and reports** were presented by Laura Edmonds and Janine Capetillo and are found in the meeting packet on pages 26-31. It was noted that the veterans are often

cycling out of the jail pretty fast making it hard to get the designated staff catching them before release due to limited staffing. The VET Center and staff are working with the misdemeanor cases to connect them with education/information and more quickly for referrals. No other concerns or questions from the group on those items.

**Monthly CCQ match:** Mike Laughlin provided the for MH prevalence which according to TLETS is still high 63%. Mike/Alyssa/Leah advised the Jail MH screen was still too inclusive, and also that the data sources of this was being reviewed with IT to refine the data feeds and hopefully resolve the issue soon. The NTBHA feed will also soon be added to the data collection process which should help in more accurate triaging and identification.

**All other department and agency data reports and program updates** were accepted as read, and can be reviewed in the meeting packet.

Lynn Richardson presented the **Public Defender** MH case data and reports (page 34 of packet) noting they will soon have the Smart Justice numbers added also. No other concerns/comments at this time.

Lee Pierson provided the **DA data updates and report (see supplemental packet insert for more information)** noting 2 staff was out most of the month.

### **Provider Reports**

**Mike Laughlin presented for Kelly Lane from The Bridge** (pg. 35) with no comments/concerns expressed.

**IPS:** Enrique advised of a new AIM program in April with Judge Birmingham that involves criminogenic risk assessments, enhanced treatment incentives/programs. Deann Roper is the contact for this. Additionally, IPS has provided MAT and Opioid Treatment Services to 51 patients since Nov. 2017 for Free and NTBHA is additionally reprogramming funds for part of this. Part of the program includes 6-12 day detox, traditional Methadone Treatment and 30-60 MAT/OTS with Intensive Outpatient Services. Those in ATRS can attend MAT/OTS and there will be no overlap or splitting of services. John Henry with NTBHA advised that there is often a different treatment provider approved from the medication prescriber. Several emphasized there is not enough funded OTS/MAT treatment slots available to meet the need. Enrique advised that State got \$27 million infusion from Feds. with 80% to prevention/intervention and only 20% to treatment. Stacy Burns with Nexus advised they provide Suboxone treatment with recovery/peer support coaches who work specifically with those in detox services. Serena McNair/CSCD also advised that some specialty courts have designated tracks that allow from some of these types of services to augment what is already being provided within the program. Enrique also reminded all that Suboxone won't reveal itself in typical UA test since it's an antagonist.

**Metrocare:** Crystal Garland presented Metrocare data/reports (pg. 36-37) advising that Atlas and Pride Courts are lower recently and they are meeting with CSCD to resolve that. DDRC is now at full capacity.

**Specialty Court:** Janine presented OCR Court data with no concerns, questions, or further comments. Serena McNair provided the other Specialty Court numbers (pages 40-44) commenting that Atlas Court numbers are down and that Judge Hawthorne was working to resolve the issue. Judge Wade reminded that we might want to also look at DA incentives for this. Keta Dickerson provided DIVERT Court data for April (136 census with 9 new) and May (134 census with 14 new and 10 discharges).

**Funding:** Keta advised that based on the results from the recent legislative/budget Dallas Courts look pretty good and the big funding cuts that were feared will not happen this time. However, program outcomes will drive future funding soon and everyone needs to be very focused and diligent at tracking not just service numbers, but also program outcomes to justify continued funding (and to follow the 10 Key Components evidence-based model. She mentioned that Office of Court Administration is now legislatively tasked with being an Ombudsman starting in FY2018 which will include postings for complaints, technical assistance, outcome tracking, etc. Judge Wade emphasized that everyone should realize and focus on the fact that Grant reporting requirements can affect any state matching and any local

support for continued funding for their particular program. Vickie Rice encouraged everyone to track program/outcome numbers to ensure they are accurate and that your target population makes up most of your slots and program effort. Lynn Richardson also reminded all that the Commissioners Court are focused on all of this due to ongoing program costs, the recent CSG report on the local impact of specialty courts, the increased jail days for those sent back as specialty court sanctions, etc. Judge Wade asked all to consider setting up a separate BHSC focus meeting in near future to improve data/outcome tracking efforts and look at a periodic report that can go before the Commissioners Court to show impact.

### **Announcements**

**Judge Wade** asked for announcements from the departments/agencies.

**Judge Lela Mays** (STAC Court): reminded everyone that they are coming up on a sponsored screening of the “Anonymous People” documentary next Thursday.

**Shenna and Laura** announced the next monthly “Delightful Discussions” brown bag in-service with information and guidance on Specialty Courts is on the June 16, 2017, from 1130-1215pm. It will be held in the in Pretrial Conference Rm. A9 on the 1<sup>st</sup> floor, and this month’s topic will be: **Drug and Alcohol Testing**. Judge Wade promoted this and encouraged everyone to attend and participate. Desert will be provided with door prizes. RSVP to Shenna via email.

**Vickie Rice** notified everyone that the DA is no longer using designated prosecutors or prioritizing mental health cases with Major Depressive Disorder (MDD) diagnoses. She expressed concern for those with self-harm or suicide potential, and remind everyone that the Public Defender’s Office will still handle these type of cases with specialized staff as always. Lee Pierson with the DA’s office advised they would still handle these cases, but no longer target them for specialty court placement, or within their specialized MH Team/resources. The understanding at this point is whether MMD is connected to the crime, funding limits, staffing, department resources, number of case in this category, etc. Vickie was concerned there would be a wait list occurring for these cases as resources dedicated to them dwindle. It was also mentioned that private bar generally doesn’t recognize or address cases unless they have psychotic symptoms present. Lee agreed to take these questions and concerns up the chain of command, and several would bring it up at the next BHLT.

### **Adjournment**

The meeting was adjourned by Judge Wade at 940am. The next bi-meeting is set for Thursday, August 21, 2017 at 830am in the same location. Reminder was provided to everyone to submit their monthly stats to Mike Laughlin via email by the 2<sup>nd</sup> Friday of each month for distribution.

## Meadows Mental Health Policy Institute

### Community Stakeholder Project Status Update — Third Quarter 2017

---

The Caruth Smart Justice Planning Grant Phase II proposal was submitted to the W.W. Caruth, Jr. Foundation at the Communities Foundation of Texas on July 15, 2016.<sup>1</sup> MMHPI and its partners began implementation of this project in January 2017, ensuring that it is aligned with and supports the North Texas Behavioral Health Authority (NTBHA) transition from a managed care-model to a community behavioral health centered-model. Approaching the third quarter of Year 1, we are well into implementation of intercept tasks and progressing towards client entrance into expanded assertive community treatment teams.

In terms of diversion at first contact with law enforcement, MMHPI is coordinating efforts between the Dallas Police Department (DPD), the Dallas Fire and Rescue Department (DFRD), and the ongoing community treatment teams for Year 1 deployment. Additionally, the Dallas County Criminal Justice Department (DCCJD) and Jail staff have transformed screening and assessment procedures to identify persons with behavioral health treatment needs early in the jail booking process, leading to an increase in persons released on personal recognizance bonds with a connection to treatment and appropriate court supervision. The improved screening and assessment will identify those who are the core target population for the project, mainly those caught in the trap of “super-utilization” of emergency and law enforcement services. Progress includes increased training of clinical personnel, law enforcement, judges, and several other Jail staff who come into contact with defendants eligible for Caruth ongoing community treatment services. MMHPI thanks its partners for their continued support and energies in the advancement of the Caruth Smart Justice Project.

#### Intercept 1 (Law Enforcement)

MMHPI staff continues to provide technical assistance to stakeholders with the DFR and DPD as they coordinate efforts to identify programming and logistical needs. On May 24, 2017, the City Council met and approved by unanimous vote the sub-grant award for the development and implementation of the RIGHT Care Program. On June 2<sup>nd</sup>, the City of Dallas signed the Caruth Smart Justice Implementation Project sub-grant agreement and delivered it to MMHPI for final signature. The Intercept I workgroup was held on June 8th with leadership from DPD, DFR, and MMHPI staff. The workgroup discussed writing of policies and

---

<sup>1</sup> On October 5, 2016, the trustees of the W.W. Caruth Foundation at the Communities Foundation of Texas approved the grant proposal, which enables the Meadows Mental Health Policy Institute to work closely with Dallas County, the City of Dallas, and a broad array of partners to implement the Dallas County Smart Justice Project.

procedures and workflow. The date of the next Intercept I workgroup meeting is to be determined.

### **Intercept 2 (Initial Detention/Initial Court Hearings) / Intercept 3 (Jails/Courts) / Intercept 4 (Re-Entry)**

The three work groups within the Dallas County criminal justice system, each lead by a criminal court Judge are continuing to complete key tasks related to the beta test launch that began April 17 and will continue until full grant implementation in August.

As a result of the April beta test, an effort aimed at tracking and reviewing the new court, attorney, pretrial, and assessment processes, criminal justice staff have made adjustments based on their internal evaluation. Jail and Parkland staff are routinely working together to complete mental health screens on ALL defendants at book in. Adapt Community Solutions staff has been successful in extracting those records, triaging and prioritizing them for action, and sending a daily list to Pretrial for criminal records review. As these processes gain traction, the Magistrate Judges to continue to accommodate the new mental health bond releases via dedicated dockets each weekday afternoon. The District Attorney's Office staff have fine-tuned their review of documents, criminal history, and victim information in order to address any concerns by the government for those considered for release. Additionally, the Clerk's Office has modified their protocols to ensure all legal documents are completed and disclosed for timely bond releases. Criminal Justice Department staff continue working with treatment providers to improve treatment connection and referral processes to ensure client follow-through and compliance.

DCCJD staff have developed internal data tracking tools to monitor program activities and performance outcomes and continue to revise those tools as the beta testing continues. From the beta testing launch on April 17 through May 31, 2017, the following activity occurred:

- 1,582 defendants screened positive for mental health needs,
- 319 of the 1,582 passed initial screening and were further assessed for criminal history eligibility,
- 51 of the 319 were eligible to present at Court for mental health bond release, and
- 45 were approved for release (felony and misdemeanor cases each represented about half the total).

The three work groups with the DCCJD will continue working through the process barriers over the remaining days of this beta test, make necessary adjustments, and finalize a core working document for everyone to follow in time for the full implementation in late summer or early fall, 2017.

**Intercept 5 (Community Corrections and Services)**

Contract negotiations with the four partner ACT and FACT community provider agencies have been completed. Providers were required to submit proposals for use of Caruth funds to expand their service capacity and improve fidelity to best practices. Each agency provided thoughtful and creative uses that would not only enhance care but that also would increase their adherence to the fidelity model being implemented. MMPHI staff subjected each proposal to clarifying questions and all providers were able to provide insightful, in-depth responses. Final contract documents are prepared and have been provided to providers, with final contract execution by mid-July.



**Department of Criminal Justice  
FY2017 SAMHSA Grant Project**

	Oct.	Nov.	Dec.	Jan.	Feb.	Mar.	Apr.	May	June	July	Aug.	Sep.	FY2017 Total	FY2016 Total
Number of New Admissions	8	4	1	3	7	9	5	1	4	1			43	33
Number of Successful Completions	3	6	2	5	0	4	8	4	2	0			34	24
Number of Unsuccessful Completions	1	1	0	0	1	2	2	0	0	2			9	9
Average Days in Jail from Referral to Admission	5	6	3	4	6	9	10	6	8	12			7	4
Number of New Admissions on ELM	6	3	1	2	7	8	4	1	3	1			36	12
<b>Program Referral Follow-Ups by Type (running total per grant year)</b>														
Court Program Graduate													0	6
Active In Court Program													7	2
Active In Treatment at Nexus													3	N/A
In Jail													5	0
Re-Arrested and Released to Community													9	11
Re-Arrested and Released to Further Treatment													7	7
Released to TDCJ or State Jail													2	3
Active Warrant													10	4



## **Behavioral Health Steering Committee**

### **530 Fund Sub-Committee**

#### **Attendees**

Laura Edmonds, Shenna Oriabure, Keta Dickerson, Ruth Kaiser, Judge Kristin Wade, Lynn Richardson, Dr. Jill Johansson-Love, Leah Gamble, Serena McNair

#### **Review/Approval of Minutes**

Laura Edmonds called the meeting to order at 9:38am and asked for a motion to approve the minutes. Leah Gamble made a motion to approve the minutes. Ruth Kaiser seconded the motion and the minutes were accepted by the group.

#### **530 Fund Balance and Update**

An update of the 530 Fund Balance was provided. Currently the balance for the Felony account (4020) is \$97,208.37; the Misdemeanor account (4031) is \$75,280.81 for a total of \$172,489.18. Laura presented the 530 Fund Monthly Expenses report for the period of October 2016- June 2017. Expenses paid included training (\$1,628.08) which was TASC travel reimbursement. Drug testing for May and June totaled \$2,629.80. Additional expenses paid included TASC De-Brief (\$679.02), incentives (\$705.46), and MH Specialty Court Coordinator Salary. Serena McNair requested the 530 Fund Report be emailed monthly to all certified specialty court judges.

#### **Request for Funding**

Laura Edmonds presented a formal request for funding from DIVERT Court. DIVERT is requesting \$10,200 for 60 days inpatient residential drug treatment for two participants. The inpatient treatment (pre-adjudication) line item has a total of \$13,000 and no money has been requested or spent this fiscal year from the line item. Ruth Kaiser moved to approve the request for treatment funding. Lynn Richardson seconded the motion. The motion was approved by the group.

#### **Update on Drug Testing Line Item**

Laura Edmonds provided a printed report with an update on the drug testing line item. The printed report will be distributed at every subcommittee meeting going forward. A total of \$7,515 has been invoiced with \$2,485 remaining in the budget. Dr. Love opined that not all certified specialty courts were aware of the specialized drug testing or how to access the testing. Laura asked for suggestions on outreach efforts to other certified specialty courts to inform of the drug testing availability. Dr. Love suggested sending the information to specialty court probation officers and indicating which specialty courts are eligible to use the line item. Shenna

530 Sub Committee

Minutes from June 19, 2017

Page 1 of 2

Oriabure will send an email with the description of the specialized drug testing and how to access the testing to probation. Judge Wade again brought up the idea of a pictograph that will identify all certified specialty courts and provide other pertinent information in a pictorial format. The pictograph can be something relevant to all specialty courts. Serena McNair advised that Dr. Dillon and Mr. Syed would have to approve the dissemination of specialty courts' information for the pictograph. The pictograph discussion evolved into a robust and in-depth dialogue about specialty courts, best practices, evaluation, and outcomes. Lynn Richardson advised "we" as a county need to make a decision on the functionality of specialty courts and if we want to make a change. Lynn concluded specialty courts need to begin focusing on outcomes and data. Laura suggested having a collaborative discussion about what reporting for specialty courts would and should look like. Dr. Love detailed the need for consents to be in place to track outcome data long term. Judge Wade stated specialty courts need the collaboration of all partners including the DA.

### **2018 NADCP Planning**

Laura Edmonds provided information on the potential cost of chartering buses for the conference. The cost estimates to rent (2) buses with combined seating for 100 people ranges between \$6,000 and \$12,000 depending on certain factors. The mileage reimbursement per individual is estimated at \$255 per person. Laura distributed a proposed 530 Fund budget for FY 2018 and explained the proposed changes as an effort to increase money in the training line item. In the proposed budget, the training line item was increased from \$17,000 to \$37,000. Laura's calculations estimates 19 people can be sent if the fund covers all cost but more can be sent with modifications to mileage and lodging. Judge Wade suggested requesting money from the commissioners. Lynn Richardson suggested lobbying each commissioner individually and explaining the training, developing a training budget within respective departments, and ascertaining the number of specialty court personnel that will attend the conference. Serena McNair advised she will gather a group of specialty court judges to accompany Judge Wade when speaking to the commissioners. The subcommittee tasked Lynn with helping figure out the block of hotel rooms. Keta Dickerson advocated for the creation of a separate escrow account for donations. Keta spoke briefly on stipends for the national conference. Keta will have more information regarding stipends after meeting on the state level in a few weeks. The idea of a fundraising collaboration for the conference was mentioned again. It was advised the fundraising could not be channeled through CCIF. Dr. Love asked if the subcommittee can legally participate in fundraising. Laura will follow-up on the legality of the group fundraising. Laura requested the subcommittee meet in August to finalize the 2018 budget. The group agreed to meet next month.

### **Announcements**

Laura Edmonds stated the 10 Key Component trainings will continue in the month of August with the topic of Substance Abuse Treatment. Serena McNair advised this week was National Probation & Parole Officer Week. Serena encouraged the group to reach out to probation officers with a word of praise or encouragement. Laura advised of an upcoming training on housing resources scheduled for July 21, 2017. Laura advised the training will not solve the housing problems but will be a good resource for information.

### **Adjourn**

The meeting was adjourned at 10:57 am and will reconvene on 8/9/17 @9:30am.

530 Sub Committee

Minutes from June 19, 2017

Page 2 of 2

**530 Fund FY 17**  
**Balances/Expenditures**  
**Summary Page**

Month	Beg. Bal. Misd 4031	Expense	Credit	End Bal	Beg. Bal Fel 4020	Expense	Credit	End Bal
Oct	\$ 70,726.15	\$ 4,173.70	\$ 6,746.85	\$ 73,299.30	\$ 84,943.04	\$ 2,254.36	\$ 4,337.78	\$ 87,026.45
Nov	\$ 73,299.30	\$ 6,226.79	\$ 6,038.74	\$ 73,111.25	\$ 87,026.45	\$ -	\$ 4,149.73	\$ 91,364.24
Dec	\$ 73,111.25	\$ 9,168.43	\$ 3,995.23	\$ 67,938.05	\$ 91,364.24	\$ 9,990.00	\$ 4,337.78	\$ 85,712.02
Jan	\$ 67,938.05	\$ 6,539.71	\$ 12,614.68	\$ 74,013.02	\$ 85,712.02	\$ -	\$ 2,126.62	\$ 87,838.64
Feb	\$ 74,013.02	\$ 6,204.37	\$ 7,293.80	\$ 75,102.45	\$ 87,838.64	\$ -	\$ 3,851.23	\$ 91,689.87
Mar	\$ 75,102.45	\$ 6,666.11	\$ 9,639.38	\$ 78,075.72	\$ 91,689.87	\$ 10,851.96	\$ 4,980.28	\$ 85,818.19
Apr	\$ 78,075.72	\$ 6,998.96	\$ 7,212.30	\$ 78,289.06	\$ 85,818.19	\$ -	\$ 9,155.08	\$ 94,973.27
May	\$ 78,289.06	\$ 7,802.41	\$ 7,869.84	\$ 78,356.49	\$ 94,973.27	\$ 1,228.08	\$ 280.24	\$ 94,025.43
June	\$ 78,356.49	\$ 10,091.77	\$ 7,016.09	\$ 75,280.81	\$ 94,025.43	\$ 1,079.07	\$ 4,262.01	\$ 97,208.37
<b>July</b>	<b>\$ 75,280.81</b>	<b>\$ 7,261.36</b>	<b>\$ 6,707.31</b>	<b>\$ 74,726.76</b>	<b>\$ 97,208.37</b>	<b>\$ 200.00</b>	<b>\$ 3,417.51</b>	<b>\$ 100,425.88</b>
Aug								
Sep								
<b>Totals</b>		<b>\$ 71,133.61</b>	<b>\$ 75,134.22</b>		<b>Totals</b>	<b>\$ 25,603.47</b>	<b>\$ 40,898.26</b>	
<b>Ending Balance</b>				<b>\$ 74,726.76</b>	<b>Ending Balance</b>			<b>\$ 100,425.88</b>

**Ending Bal Misd/Fel                      \$ 175,152.64**

Comments: During the following reporting months these items were paid:

July : 4031 -- \$5823.56 in Specialty Court Coordinator Salary; \$1,437.80 in Drug Testing

July: 4020 -- \$200 in TASC Travel Reimbursements

# 530 Fund Monthly Expenses

Line Item	Budget	Oct.	Nov.	Dec.	Jan.	Feb.	Mar.	April	May	June	July	Total	Balance
Payroll	72,887.00	2,886.15	5,732.29	8,598.43	5,823.56	5,823.57	5,823.56	5,823.56	5,823.57	7,950.65	5,823.56	60,108.90	8,649.10
Training	17,000.00						10,851.96		1,228.08	1,079.02	200.00	13,359.06	3,640.94
Incentives	15,000.00			570.00			334.55			705.46		1,610.01	13,389.99
Inpatient TX (Pre-Adjudication)	13,000.00											0.00	13,000.00
Inpatient TX CSCD	20,000.00											0.00	20,000.00
Office Supplies	500.00											0.00	500.00
Transportation	10,000.00			9,990.00								9,990.00	10.00
Drug Testing	10,000.00	172.55	494.50		716.15	380.80	508.00	1,175.40	1,978.84	650.96	1,437.80	7,515.00	2,485.00
Operating Total	158,387.00											0.00	61,675.03
Incentives from Previous Budget		2,856.92										2,856.92	
Training from Previous Budget		532.44										532.44	
CREDITS													
Fund 4031		7,069.23	6,038.74	3,995.23	12,614.68	7,293.80	9,639.38	7,212.30	7,869.84	7016.09	6707.31		
Fund 4022		4,337.78	4,149.73	4,337.78	2,126.62	3,851.23	4,980.28	9,155.08	280.24	4262.01	3417.51		
Credits Total		11,407.01	10,188.47	8,333.01	14,741.30	11,145.03	14,619.66	16,367.38	8,150.08	11278.10	10124.82		

<u>Incentives</u>	<u>Treatment (Pre-Adjudication)</u>	<u>TASC Training</u>
MHJD: \$570	Approval for Divert to use	Hotel: \$5,691.96
PRIDE: \$334.55	\$10,200 for 2 participants	TASC Registration: \$5,160
STAC: \$705.46		TASC Reimbursements: \$1,828.08
		<b>TOTAL: \$12,680.04</b>





# Crisis Services Project

CSP Total

CSP Monthly Report DY6\_No Graphs

Last Refresh: 6/30/17 at 9:08:39 AM GMT-05:00

	Past Year Avg	2016-10	2016-11	2016-12	2017-01	2017-02	2017-03	2017-04	2017-05	Average:	Sum:
Total Service Episodes:	768	704	717	551	694	900	1,191	960	847	820.5	6,564
Total Unique CID:	589	696	673	477	592	765	963	751	593	688.75	5,510
Total Unique SID:		678	661	470	584	742	956	720	584	674.38	5,395
% Change to DY 4 by CID		118.17%	114.26%	80.98%	100.51%	129.88%	163.50%	127.50%	100.68%		

Total Encounters by Type:		2016-10	2016-11	2016-12	2017-01	2017-02	2017-03	2017-04	2017-05	Average:	Sum:
Triage		704	717	551	694	900	1,191	960	847	820.5	6,564
Care Coordination		2,736	2,532	2,304	2,626	2,588	2,943	2,239	2,330	2,537.25	20,298
F2F Encounter		242	255	252	211	237	292	301	361	268.88	2,151
Sum:		3,682	3,504	3,107	3,531	3,725	4,426	3,500	3,538	3,626.63	29,013

F2F Encounter		2016-10	2016-11	2016-12	2017-01	2017-02	2017-03	2017-04	2017-05	Average:	Sum:
MHPR Bond								75	163	119	238
Non-MHPR		242	255	252	211	237	292	226	198	239.13	1,913
Sum:		242	255	252	211	237	292	301	361	268.88	2,151



# Crisis Services Project

Frank Crowley

CSP Monthly Report DY6\_No Graphs

Last Refresh: 6/30/17 at 9:08:39 AM GMT-05:00

	2016-10	2016-11	2016-12	2017-01	2017-02	2017-03	2017-04	2017-05	Average:	Sum:
<b>Service Episodes:</b>	704	717	551	694	900	1,191	960	847	820.5	6,564

	2016-10	2016-11	2016-12	2017-01	2017-02	2017-03	2017-04	2017-05	Average:	Sum:
<b>Unique Consumers:</b>										
By N* ID	601	598	423	500	532	627	529	460	533.75	4,270
By Client ID	95	75	54	92	233	336	222	133	155	1,240
<b>TOTAL Unique Consumers:</b>	<b>696</b>	<b>673</b>	<b>477</b>	<b>592</b>	<b>765</b>	<b>963</b>	<b>751</b>	<b>593</b>	<b>688.75</b>	<b>5,510</b>
<b>TOTAL Unique Consumers as %:</b>	<b>98.86%</b>	<b>93.86%</b>	<b>86.57%</b>	<b>85.30%</b>	<b>85.00%</b>	<b>80.86%</b>	<b>78.23%</b>	<b>70.01%</b>		

	2016-10	2016-11	2016-12	2017-01	2017-02	2017-03	2017-04	2017-05	Average:	Sum:
<b>Unique F2F:</b>										
By N* ID	185	186	165	117	111	155	179	210	163.5	1,308
By Client ID	40	37	30	35	66	75	63	80	53.25	426
<b>TOTAL Unique F2F:</b>	<b>225</b>	<b>223</b>	<b>195</b>	<b>152</b>	<b>177</b>	<b>230</b>	<b>242</b>	<b>290</b>	<b>192.67</b>	<b>1,734</b>
<b>TOTAL Unique F2F as %:</b>	<b>92.98%</b>	<b>87.45%</b>	<b>77.38%</b>	<b>72.04%</b>	<b>74.68%</b>	<b>78.77%</b>	<b>80.40%</b>	<b>80.33%</b>		

	2016-10	2016-11	2016-12	2017-01	2017-02	2017-03	2017-04	2017-05	2017-06		Average:	Sum:
<b>F2F Percentages:</b>	34.38%	35.56%	45.74%	30.40%	26.33%	24.52%	31.35%	42.62%			33.86%	270.90%



# Crisis Services Project

Frank Crowley

CSP Monthly Report DY6\_No Graphs

Last Refresh: 6/30/17 at 9:08:39 AM GMT-05:00

Encounters by Type:	2016-10	2016-11	2016-12	2017-01	2017-02	2017-03	2017-04	2017-05	Average:	Sum:
Triage	704	717	551	694	900	1,191	960	847	820.5	6,564
Care Coordination	2,736	2,532	2,304	2,626	2,588	2,943	2,239	2,330	2,537.25	20,298
F2F Encounter	242	255	252	211	237	292	301	361	268.88	2,151
<b>TOTAL Encounters:</b>	<b>3,682</b>	<b>3,504</b>	<b>3,107</b>	<b>3,531</b>	<b>3,725</b>	<b>4,426</b>	<b>3,500</b>	<b>3,538</b>	<b>3,626.63</b>	<b>29,013</b>

Female:	2016-10	2016-11	2016-12	2017-01	2017-02	2017-03	2017-04	2017-05	Average:	Sum:
Black	99	98	86	69	111	118	96	99	97	776
Hispanic	17	29	17	24	33	35	29	29	26.63	213
Other			2	1	2	2	2	2	1.83	11
Unknown	1	1	2		1	1	2		1.33	8
White	63	51	46	46	58	86	83	64	62.13	497
<b>TOTAL Female:</b>	<b>180</b>	<b>179</b>	<b>153</b>	<b>140</b>	<b>205</b>	<b>242</b>	<b>212</b>	<b>194</b>	<b>188.13</b>	<b>1,505</b>

Male:	2016-10	2016-11	2016-12	2017-01	2017-02	2017-03	2017-04	2017-05	Average:	Sum:
Black	284	286	188	258	325	371	286	229	278.38	2,227
Hispanic	71	57	44	51	86	146	110	52	77.13	617
Other	6	2	2	6	2	8	3	4	4.13	33
Unknown	3	9	3	9	2	5	3	3	4.63	37
White	133	124	85	126	141	188	135	110	130.25	1,042
<b>TOTAL Male:</b>	<b>497</b>	<b>478</b>	<b>322</b>	<b>450</b>	<b>556</b>	<b>718</b>	<b>537</b>	<b>398</b>	<b>494.5</b>	<b>3,956</b>





# Crisis Services Project

Frank Crowley

CSP Monthly Report DY6\_No Graphs

Last Refresh: 6/30/17 at 9:08:39 AM GMT-05:00

<u>Gender Not Collected:</u>	2016-10	2016-11	2016-12	2017-01	2017-02	2017-03	2017-04	2017-05	Average:	Sum:
Unknown	19	16	2	2	4	3	2	1	6.13	49
<b>TOTAL Gender Not Collected:</b>	<b>19</b>	<b>16</b>	<b>2</b>	<b>2</b>	<b>4</b>	<b>3</b>	<b>2</b>	<b>1</b>	<b>6.13</b>	<b>49</b>

<u>Age of Triage Encounters:</u>	2016-10	2016-11	2016-12	2017-01	2017-02	2017-03	2017-04	2017-05	Average:	Sum:
	696	673	477	592	765	963	751	593	688.75	5,510
<b>TOTAL Age of Triage Encounters:</b>	<b>696</b>	<b>673</b>	<b>477</b>	<b>592</b>	<b>765</b>	<b>963</b>	<b>751</b>	<b>593</b>	<b>688.75</b>	<b>5,510</b>

<u>Age of F2F Encounters:</u>	2016-10	2016-11	2016-12	2017-01	2017-02	2017-03	2017-04	2017-05	Average:	Sum:
	225	223	195	152	177	230	242	290	216.75	1,734
<b>TOTAL Age of F2F Encounters:</b>	<b>225</b>	<b>223</b>	<b>195</b>	<b>152</b>	<b>177</b>	<b>230</b>	<b>242</b>	<b>290</b>	<b>216.75</b>	<b>1,734</b>

Triage 12	5,390
Recidivism 12-12	968
Recidivism 12-12%	17.96%

Triage 6	4,088
Recidivism 6-6	552
Recidivism 6-6%	13.50%

Triage 6	4,088
Recidivism 6-12	904
Recidivism 6-12%	22.11%

	October	November	December	January	February	March	April	May
Year MO	2016/10	2016/11	2016/12	2017/01	2017/02	2017/03	2017/04	2017/05
Recidivism 12-12	9	65	129	205	346	549	744	968
Triage 12	678	1,338	1,808	2,392	3,133	4,088	4,806	5,390
Recidivism 12-12%	1.33%	4.86%	7.13%	8.57%	11.04%	13.43%	15.48%	17.96%

	October	November	December	January	February	March	April	May
Year MO	2016/10	2016/11	2016/12	2017/01	2017/02	2017/03	2017/04	2017/05
Recidivism 6-6	9	65	129	205	346	549	552	552
Triage 6	678	1,338	1,808	2,392	3,133	4,088	4,088	4,088
Recidivism 12-12%	1.33%	4.86%	7.13%	8.57%	11.04%	13.43%	13.50%	13.50%

	October	November	December	January	February	March	April	May
Year MO	2016/10	2016/11	2016/12	2017/01	2017/02	2017/03	2017/04	2017/05
Recidivism 6-12	9	65	129	205	346	549	732	904
Triage 6	678	1,338	1,808	2,392	3,133	4,088	4,088	4,088
Recidivism 12-12%	1.33%	4.86%	7.13%	8.57%	11.04%	13.43%	17.91%	22.11%



# Crisis Services Project

CSP Total

CSP Monthly Report DY6\_No Graphs

Last Refresh: 6/30/17 at 9:08:39 AM GMT-05:00

	Past Year Avg	2016-10	2016-11	2016-12	2017-01	2017-02	2017-03	2017-04	2017-05	Average:	Sum:
Total Service Episodes:	768	704	717	551	694	900	1,191	960	847	820.5	6,564
Total Unique CID:	589	696	673	477	592	765	963	751	593	688.75	5,510
Total Unique SID:		678	661	470	584	742	956	720	584	674.38	5,395
% Change to DY 4 by CID		118.17%	114.26%	80.98%	100.51%	129.88%	163.50%	127.50%	100.68%		

Total Encounters by Type:		2016-10	2016-11	2016-12	2017-01	2017-02	2017-03	2017-04	2017-05	Average:	Sum:
Triage		704	717	551	694	900	1,191	960	847	820.5	6,564
Care Coordination		2,736	2,532	2,304	2,626	2,588	2,943	2,239	2,330	2,537.25	20,298
F2F Encounter		242	255	252	211	237	292	301	361	268.88	2,151
Sum:		3,682	3,504	3,107	3,531	3,725	4,426	3,500	3,538	3,626.63	29,013

F2F Encounter		2016-10	2016-11	2016-12	2017-01	2017-02	2017-03	2017-04	2017-05	Average:	Sum:
MHPR Bond								75	163	119	238
Non-MHPR		242	255	252	211	237	292	226	198	239.13	1,913
Sum:		242	255	252	211	237	292	301	361	268.88	2,151



# Crisis Services Project

Frank Crowley

CSP Monthly Report DY6\_No Graphs

Last Refresh: 6/30/17 at 9:08:39 AM GMT-05:00

	2016-10	2016-11	2016-12	2017-01	2017-02	2017-03	2017-04	2017-05	Average:	Sum:
<b>Service Episodes:</b>	704	717	551	694	900	1,191	960	847	820.5	6,564

	2016-10	2016-11	2016-12	2017-01	2017-02	2017-03	2017-04	2017-05	Average:	Sum:
<b>Unique Consumers:</b>										
By N* ID	601	598	423	500	532	627	529	460	533.75	4,270
By Client ID	95	75	54	92	233	336	222	133	155	1,240
<b>TOTAL Unique Consumers:</b>	<b>696</b>	<b>673</b>	<b>477</b>	<b>592</b>	<b>765</b>	<b>963</b>	<b>751</b>	<b>593</b>	<b>688.75</b>	<b>5,510</b>
<b>TOTAL Unique Consumers as %:</b>	<b>98.86%</b>	<b>93.86%</b>	<b>86.57%</b>	<b>85.30%</b>	<b>85.00%</b>	<b>80.86%</b>	<b>78.23%</b>	<b>70.01%</b>		

	2016-10	2016-11	2016-12	2017-01	2017-02	2017-03	2017-04	2017-05	Average:	Sum:
<b>Unique F2F:</b>										
By N* ID	185	186	165	117	111	155	179	210	163.5	1,308
By Client ID	40	37	30	35	66	75	63	80	53.25	426
<b>TOTAL Unique F2F:</b>	<b>225</b>	<b>223</b>	<b>195</b>	<b>152</b>	<b>177</b>	<b>230</b>	<b>242</b>	<b>290</b>	<b>192.67</b>	<b>1,734</b>
<b>TOTAL Unique F2F as %:</b>	<b>92.98%</b>	<b>87.45%</b>	<b>77.38%</b>	<b>72.04%</b>	<b>74.68%</b>	<b>78.77%</b>	<b>80.40%</b>	<b>80.33%</b>		

	2016-10	2016-11	2016-12	2017-01	2017-02	2017-03	2017-04	2017-05	2017-06		Average:	Sum:
<b>F2F Percentages:</b>	34.38%	35.56%	45.74%	30.40%	26.33%	24.52%	31.35%	42.62%			33.86%	270.90%



# Crisis Services Project

Frank Crowley

CSP Monthly Report DY6\_No Graphs

Last Refresh: 6/30/17 at 9:08:39 AM GMT-05:00

Encounters by Type:	2016-10	2016-11	2016-12	2017-01	2017-02	2017-03	2017-04	2017-05	Average:	Sum:
Triage	704	717	551	694	900	1,191	960	847	820.5	6,564
Care Coordination	2,736	2,532	2,304	2,626	2,588	2,943	2,239	2,330	2,537.25	20,298
F2F Encounter	242	255	252	211	237	292	301	361	268.88	2,151
<b>TOTAL Encounters:</b>	<b>3,682</b>	<b>3,504</b>	<b>3,107</b>	<b>3,531</b>	<b>3,725</b>	<b>4,426</b>	<b>3,500</b>	<b>3,538</b>	<b>3,626.63</b>	<b>29,013</b>

Female:	2016-10	2016-11	2016-12	2017-01	2017-02	2017-03	2017-04	2017-05	Average:	Sum:
Black	99	98	86	69	111	118	96	99	97	776
Hispanic	17	29	17	24	33	35	29	29	26.63	213
Other			2	1	2	2	2	2	1.83	11
Unknown	1	1	2		1	1	2		1.33	8
White	63	51	46	46	58	86	83	64	62.13	497
<b>TOTAL Female:</b>	<b>180</b>	<b>179</b>	<b>153</b>	<b>140</b>	<b>205</b>	<b>242</b>	<b>212</b>	<b>194</b>	<b>188.13</b>	<b>1,505</b>

Male:	2016-10	2016-11	2016-12	2017-01	2017-02	2017-03	2017-04	2017-05	Average:	Sum:
Black	284	286	188	258	325	371	286	229	278.38	2,227
Hispanic	71	57	44	51	86	146	110	52	77.13	617
Other	6	2	2	6	2	8	3	4	4.13	33
Unknown	3	9	3	9	2	5	3	3	4.63	37
White	133	124	85	126	141	188	135	110	130.25	1,042
<b>TOTAL Male:</b>	<b>497</b>	<b>478</b>	<b>322</b>	<b>450</b>	<b>556</b>	<b>718</b>	<b>537</b>	<b>398</b>	<b>494.5</b>	<b>3,956</b>



<u>Gender Not Collected:</u>	2016-10	2016-11	2016-12	2017-01	2017-02	2017-03	2017-04	2017-05	Average:	Sum:
Unknown	19	16	2	2	4	3	2	1	6.13	49
<b>TOTAL Gender Not Collected:</b>	<b>19</b>	<b>16</b>	<b>2</b>	<b>2</b>	<b>4</b>	<b>3</b>	<b>2</b>	<b>1</b>	<b>6.13</b>	<b>49</b>

<u>Age of Triage Encounters:</u>	2016-10	2016-11	2016-12	2017-01	2017-02	2017-03	2017-04	2017-05	Average:	Sum:
	696	673	477	592	765	963	751	593	688.75	5,510
<b>TOTAL Age of Triage Encounters:</b>	<b>696</b>	<b>673</b>	<b>477</b>	<b>592</b>	<b>765</b>	<b>963</b>	<b>751</b>	<b>593</b>	<b>688.75</b>	<b>5,510</b>

<u>Age of F2F Encounters:</u>	2016-10	2016-11	2016-12	2017-01	2017-02	2017-03	2017-04	2017-05	Average:	Sum:
	225	223	195	152	177	230	242	290	216.75	1,734
<b>TOTAL Age of F2F Encounters:</b>	<b>225</b>	<b>223</b>	<b>195</b>	<b>152</b>	<b>177</b>	<b>230</b>	<b>242</b>	<b>290</b>	<b>216.75</b>	<b>1,734</b>

Triage 12	5,390
Recidivism 12-12	968
Recidivism 12-12%	17.96%

Triage 6	4,088
Recidivism 6-6	552
Recidivism 6-6%	13.50%

Triage 6	4,088
Recidivism 6-12	904
Recidivism 6-12%	22.11%

	October	November	December	January	February	March	April	May
Year MO	2016/10	2016/11	2016/12	2017/01	2017/02	2017/03	2017/04	2017/05
Recidivism 12-12	9	65	129	205	346	549	744	968
Triage 12	678	1,338	1,808	2,392	3,133	4,088	4,806	5,390
Recidivism 12-12%	1.33%	4.86%	7.13%	8.57%	11.04%	13.43%	15.48%	17.96%

	October	November	December	January	February	March	April	May
Year MO	2016/10	2016/11	2016/12	2017/01	2017/02	2017/03	2017/04	2017/05
Recidivism 6-6	9	65	129	205	346	549	552	552
Triage 6	678	1,338	1,808	2,392	3,133	4,088	4,088	4,088
Recidivism 12-12%	1.33%	4.86%	7.13%	8.57%	11.04%	13.43%	13.50%	13.50%

	October	November	December	January	February	March	April	May
Year MO	2016/10	2016/11	2016/12	2017/01	2017/02	2017/03	2017/04	2017/05
Recidivism 6-12	9	65	129	205	346	549	732	904
Triage 6	678	1,338	1,808	2,392	3,133	4,088	4,088	4,088
Recidivism 12-12%	1.33%	4.86%	7.13%	8.57%	11.04%	13.43%	17.91%	22.11%

## JUNE 2017 Monthly Report

<b>Dallas County Crisis Services Program</b>	<b>Program Specific and Systems Update</b>	<b>Summary of NTBHA's Monthly Activities</b>	<b>Action Items/Concerns</b>
<b>1</b>	<b>Adapt Community Solutions (ACS)</b> – Targets member released from jail using ACS to ensure continuity of care	Conducted case consultations on approximately 28 referrals.	Not Applicable
<b>2</b>	<b>Transicare Post Acute Transitional Services (PATs)</b> – Targets high utilizers released from jail with more intensive need to ensure continuity of care	<p>Provided case consultation and clinical support during PATs/FACT case review.</p> <p>Completed hospitalization/benefit inquiries for 2 clients. Resolved 4 prescription issues. 1 referral made to Metrocare for IDD services.</p>	Not Applicable
<b>3</b>	<p><b>ACT Forensic Diversion Unit (FDU)</b> – Provides ACT services for high utilizers of the legal system.</p> <p>Responsible for approving evaluations of FDU referrals and FDU oversight</p>	<p>Clinical review of cases for appropriate LOC recommendations on 19 FDU referrals, 17 of which were approved.</p> <p>Reviewed 5 recovery plans. There was no MD consult during this reporting period.</p>	Not Applicable
<b>4</b>	<b>Caruth Smart Justice</b>	No documented activities during this reporting period.	Not Applicable
<b>5</b>	<b>CSP – Cottages Project</b> – Housing complex of 50 cottages that provides housing, mental health assessments and counseling for clients categorized as high utilizers of MH and judicial systems	Submitted parameters to be utilized for NTBHA portion of Cottages residents screening. Initiated process of obtaining MOU between City Square and NTBHA for Care Coordinator's involvement in the applicant screening process.	Finalize MOU between City Square and NTBHA.



# JULY 2017 Monthly Report

Dallas County Crisis Services Program	Program Specific and Systems Update	Summary of NTBHA's Monthly Activities	Action Items/Concerns
1	<b>Adapt Community Solutions (ACS)</b> – Targets member released from jail using ACS to ensure continuity of care	Conducted case consultations on approximately 21 referrals.	Not Applicable
2	<b>Transicare Post Acute Transitional Services (PATS)</b> – Targets high utilizers released from jail with more intensive need to ensure continuity of care	<p>Provided case consultation and clinical support during PATS/FACT case review.</p> <p>Completed hospitalization/benefit inquiries for 4 clients. Assisted w/ linkage to outpatient services for 3 clients.</p>	Not Applicable
3	<p><b>ACT Forensic Diversion Unit (FDU)</b> – Provides ACT services for high utilizers of the legal system.</p> <p>Responsible for approving evaluations of FDU referrals and FDU oversight</p>	<p>Clinical review of cases for appropriate LOC recommendations on 7 FDU referrals, 6 of which were approved for FDU assessment.</p> <p>Reviewed 5 recovery plans. There was no MD consult during this reporting period.</p>	Not Applicable
4	<b>Caruth Smart Justice</b>	No documented activities during this reporting period.	Not Applicable
5	<b>CSP – Cottages Project</b> – Housing complex of 50 cottages that provides housing, mental health assessments and counseling for clients categorized as high utilizers of MH and judicial systems	Reviewed MOU drafts sent by CitySquare. Meeting held between Dallas County and NTBHA to discuss modifications to be made to the MOU.	Finalize MOU between City Square and NTBHA.

## Forensic Diversion Unit (FDU) Report

	Jan-17	Feb-17	Mar-17	Apr-17	May-17	Jun-17	Jul-17	Aug-17	Sep-17	Oct-17	Nov-17	Dec - 17
<b>Beginning Census</b>	<b>47</b>	<b>46</b>	<b>50</b>	<b>45</b>	<b>44</b>							
<b>Number of Referrals Received from CSP</b>												
Adapt	7	8	16	12	20							
Metrocare	0	0										
Transicare	0	0										
DA	0	0										
<b>Number of Admissions</b>	5	8	10	7	9							
<b>Number Discharged</b>	0	4	10	3	6							
<b>Number not admitted due to:</b>												
Client qualifies for ACT	0	0	0	2								
Client qualifies for other programs	1	0	0									
Client didn't meet level of need required	0	0	0									
Other reasons	0	0	0	3	7							
<b>Average Service Utilization:</b>												
Average hours seen	7.22	6.46	6.36	6.52	6.72							
<b>Encounter Breakdown:</b>												
Face to Face	254	275.25	245	264.25	269							
Service Coordination	193	225	215	188	296							
<b>Number of clients accessing:</b>												
Emergency Room (medical)	0	0	0		0							
23-hour observation (psych)	1	1	0	1								
Inpatient (med/ psych)	0	0	0		2							
jail book-in	10	2	0	1	5							
<b>Reasons for Discharge:</b>												
Graduate		0	0		1							
Client Disengagement	2	3	0	3	3							
Extended Jail stay (case-by-case basis)		0	0		1							
Other Intervening factors		1	0	2	1							
<b>End of Month Stats:</b>												
Number of Active FDU clients end of month	<b>46</b>	<b>50</b>	<b>48</b>	<b>44</b>	<b>47</b>							
Number of Unique Consumers	2	0	2	0	47							
# of clients waiting to be released from jail	11	12	15	12	14							
Average Length of stay on FDU (month)	12.27	11.38	7.72	8.06	6.33							
<b>Maximum Census</b>	<b>46</b>	<b>46</b>	<b>46</b>	<b>46</b>	<b>46</b>							

the consumers on the "waiting" list are being actively seen in jail until release

## Forensic Diversion Unit (FDU) Report

	Jan-17	Feb-17	Mar-17	Apr-17	May-17	Jun-17	Jul-17	Aug-17	Sep-17	Oct-17	Nov-17	Dec - 17
<b>Beginning Census</b>	47	46	50	45	44	47						
<b>Number of Referrals Received from CSP</b>												
Adapt	7	8	16	12	20	17						
Metrocare	0	0										
Transicare	0	0										
DA	0	0										
<b>Number of Admissions</b>	5	8	10	7	9	8						
<b>Number Discharged</b>	0	4	10	3	6	5						
<b>Number not admitted due to:</b>												
Client qualifies for ACT	0	0	0	2		4						
Client qualifies for other programs	1	0	0									
Client didn't meet level of need required	0	0	0									
Other reasons	0	0	0	3	7	5						
<b>Average Service Utilization:</b>												
Average hours seen	7.22	6.46	6.36	6.52	6.72	5.19						
<b>Encounter Breakdown:</b>												
Face to Face	254	275.25	245	264.25	269	240.28						
Service Coordination	193	225	215	188	296	210.25						
<b>Number of clients accessing:</b>												
Emergency Room (medical)	0	0	0		0	0						
23-hour observation (psych)	1	1	0	1								
Inpatient (med/ psych)	0	0	0		2	2						
Jail book-in	10	2	0	1	5	5						
<b>Reasons for Discharge:</b>												
Graduate		0	0		1	1						
Client Disengagement	2	3	0	3	3	1						
Extended Jail stay (case-by-case basis)		0	0		1							
Other Intervening factors		1	0	2	1	1						
<b>End of Month Stats:</b>												
Number of Active FDU clients end of month	46	50	48	44	47	50						
Number of Unique Consumers	2	0	2	0	47	50						
# of clients waiting to be released from jail	11	12	15	12	14	9						
Average Length of stay on FDU (month)	12.27	11.38	7.72	8.06	6.33	5.54						
<b>Maximum Census</b>	46	46	46	46	46	46						

the consumers on the "waiting" list are being actively seen in jail until release

Transicare Reporting		Crisis Services Project						
	2016-10	2016-11	2016-12	2017-01	2017-02	2017-03	2017-04	2017-05
<b>Beginning Census</b>	115	115	107	103	98	123	127	140
REFERRALS	46	33	32	23	42	56	79	76
<b>Admissions</b>								
<b>Referred Admitted</b>	<b>19</b>	<b>18</b>	<b>16</b>	<b>8</b>	<b>26</b>	<b>28</b>	<b>30</b>	<b>19</b>
No Admit Client Refusal	2	1	1	2	0	1	2	1
No Admit Criteria	1	1	3	0	1	0	1	
No Admit Structural	2	6	2	2	2	3	5	
Pending	22	7	10	11	13	24	41	56
<i>PRIOR PENDING</i>								
<b>Pending Admitted</b>	<b>12</b>	<b>17</b>	<b>2</b>	<b>4</b>	<b>8</b>	<b>11</b>	<b>17</b>	<b>18</b>
No Admit Client Refusal	3	3	4	1	0	0	0	1
No Admit Criteria	2	1	1	1	0	0	0	1
No Admit Structural	0	4	3	4	1	1	4	6
<b>Total Admissions</b>	<b>31</b>	<b>35</b>	<b>18</b>	<b>12</b>	<b>34</b>	<b>39</b>	<b>47</b>	<b>37</b>
<b>Discharges</b>								
Success Transfer	7	3	4	3	2	4	5	6
DC Midterm Disengage	12	16	6	2	4	4	4	13
DC Rapid Disengage	6	6	2	4	2	14	5	10
DC Structural	6	18	10	9	1	13	20	15
<b>Total Discharged</b>	<b>31</b>	<b>43</b>	<b>22</b>	<b>18</b>	<b>9</b>	<b>35</b>	<b>34</b>	<b>44</b>
Active End Of Month	115	107	103	97	123	127	140	133
<b>Outcome Data</b>								
<i>Terrell State Hospital Linkages</i>								
≤7 Connect To Prescriber	1	6	2	1	4	6	2	4
≤30 Connect To Prescriber	0	1	0	0	0	0	0	0
Missed Metric	1	3	0	1	3	3	0	1
Total Released	2	10	2	2	7	9	2	5
<b>Cummulative ≤7 Connect %</b>	<b>50.0%</b>	<b>58.3%</b>	<b>64.3%</b>	<b>62.5%</b>	<b>60.9%</b>	<b>62.5%</b>	<b>64.7%</b>	<b>66.7%</b>
<b>Cummulative ≤30 Connect %</b>	<b>50.0%</b>	<b>66.7%</b>	<b>71.4%</b>	<b>68.8%</b>	<b>65.2%</b>	<b>65.6%</b>	<b>67.6%</b>	<b>69.2%</b>
<b>Missed Metric</b>	<b>50.0%</b>	<b>33.3%</b>	<b>28.6%</b>	<b>31.3%</b>	<b>34.8%</b>	<b>34.4%</b>	<b>32.4%</b>	<b>30.8%</b>
<i>Unduplicated Served</i>								
<b>Monthly Unduplicated</b>	<b>141</b>	<b>141</b>	<b>124</b>	<b>111</b>	<b>119</b>	<b>155</b>	<b>156</b>	<b>162</b>
DSRIP YTD Unduplicated Served	141	180	209	227	259	308	352	397
<i>Encounter Data</i>								
F2F Encounter	848	840	730	756	799	856	1018	1196
Care Coord	198	138	113	82	30	117	119	108
Total	1046	978	843	759	829	759	1137	1304

Transicare Reporting		Crisis Services Project				
	2016-10	2016-11	2016-12	2017-01	2017-02	2017-03
<b>Beginning Census</b>	115	115	107	103	98	123
REFERRALS	46	33	32	23	42	56
<b>Admissions</b>						
<b>Referred Admitted</b>	<b>19</b>	<b>18</b>	<b>16</b>	<b>8</b>	<b>26</b>	<b>28</b>
No Admit Client Refusal	2	1	1	2	0	1
No Admit Criteria	1	1	3	0	1	0
No Admit Structural	2	6	2	2	2	3
Pending	22	7	10	11	13	24
<i>PRIOR PENDING</i>						
<b>Pending Admitted</b>	<b>12</b>	<b>17</b>	<b>2</b>	<b>4</b>	<b>8</b>	<b>11</b>
No Admit Client Refusal	3	3	4	1	0	0
No Admit Criteria	2	1	1	1	0	0
No Admit Structural	0	4	3	4	1	1
<b>Total Admissions</b>	<b>31</b>	<b>35</b>	<b>18</b>	<b>12</b>	<b>34</b>	<b>39</b>
<b>Discharges</b>						
Success Transfer	7	3	4	3	2	4
DC Midterm Disengage	12	16	6	2	4	4
DC Rapid Disengage	6	6	2	4	2	14
DC Structural	6	18	10	9	1	13
<b>Total Discharged</b>	<b>31</b>	<b>43</b>	<b>22</b>	<b>18</b>	<b>9</b>	<b>35</b>
Active End Of Month	115	107	103	97	123	127
<b>Outcome Data</b>						
<i>Terrell State Hospital Linkages</i>						
≤7 Connect To Prescriber	1	6	2	1	4	6
≤30 Connect To Prescriber	0	1	0	0	0	0
Missed Metric	1	3	0	1	3	3
Total Released	2	10	2	2	7	9
<b>Cummulative ≤7 Connect %</b>	<b>50.0%</b>	<b>58.3%</b>	<b>64.3%</b>	<b>62.5%</b>	<b>60.9%</b>	<b>62.5%</b>
<b>Cummulative ≤30 Connect %</b>	<b>50.0%</b>	<b>66.7%</b>	<b>71.4%</b>	<b>68.8%</b>	<b>65.2%</b>	<b>65.6%</b>
<b>Missed Metric</b>	<b>50.0%</b>	<b>33.3%</b>	<b>28.6%</b>	<b>31.3%</b>	<b>34.8%</b>	<b>34.4%</b>
<i>Unduplicated Served</i>						
<b>Monthly Unduplicated</b>	<b>141</b>	<b>141</b>	<b>124</b>	<b>111</b>	<b>120</b>	<b>155</b>
DSRIP YTD Unduplicated Served	141	180	209	227	259	308
<i>Encounter Data</i>						
F2F Encounter	848	840	730	753	802	855
Care Coord	198	138	113	82	30	117
<b>Total</b>	<b>1046</b>	<b>978</b>	<b>843</b>	<b>835</b>	<b>832</b>	<b>972</b>

<b>2017-04</b>	<b>2017-05</b>	<b>2017-06</b>
127	140	133
79	76	78
<b>30</b>	<b>19</b>	<b>32</b>
2	1	2
1	0	3
5	5	1
41	54	40
<b>17</b>	<b>18</b>	<b>23</b>
0	1	0
0	1	2
4	2	2
<b>47</b>	<b>37</b>	<b>55</b>
5	6	3
4	13	12
5	10	9
20	15	18
<b>34</b>	<b>44</b>	<b>42</b>
140	133	146
2	4	5
0	0	0
0	1	0
2	5	5
<b>64.7%</b>	<b>66.7%</b>	<b>70.5%</b>
<b>67.6%</b>	<b>69.2%</b>	<b>72.7%</b>
<b>32.4%</b>	<b>30.8%</b>	<b>27.3%</b>
<b>156</b>	<b>162</b>	<b>183</b>
352	397	460
1019	1196	1333
119	108	53
1138	1304	1386

### Jail Competency Stats 2017

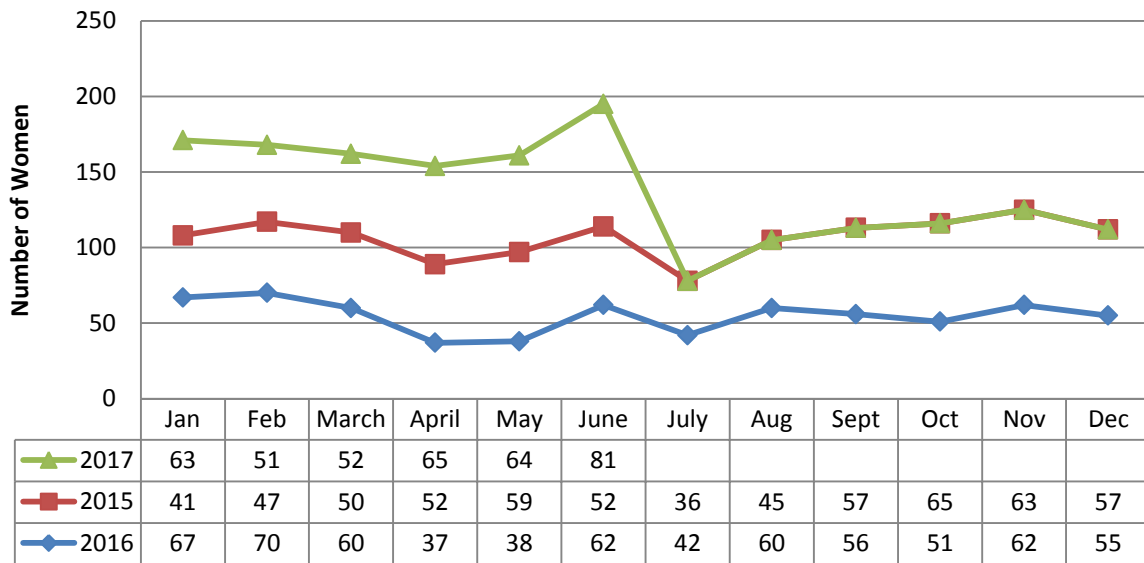
	Jan	Feb	March	April	May	June	July	Aug	Sept	Oct	Nov
<b>Active</b>											
New Evals - Incompetent	41	48	67	60	68	56	56				
Waiting for the hospital - End of month	68	51	76	77	74	102	106				
Returned to jail from the hospital	30	23	24	22	21	25	23				
<b>Closed</b>											
New Evals - Competent	21	33	34	38	51	34	42				
Admitted to the state hospital	35	36	27	34	41	36	34				
Maximum Secure Facility	8	4	4	6	8	5	6				
Non-Maximum Secure Facility	27	32	23	28	33	31	28				

Pregnant Patients  
June 2017

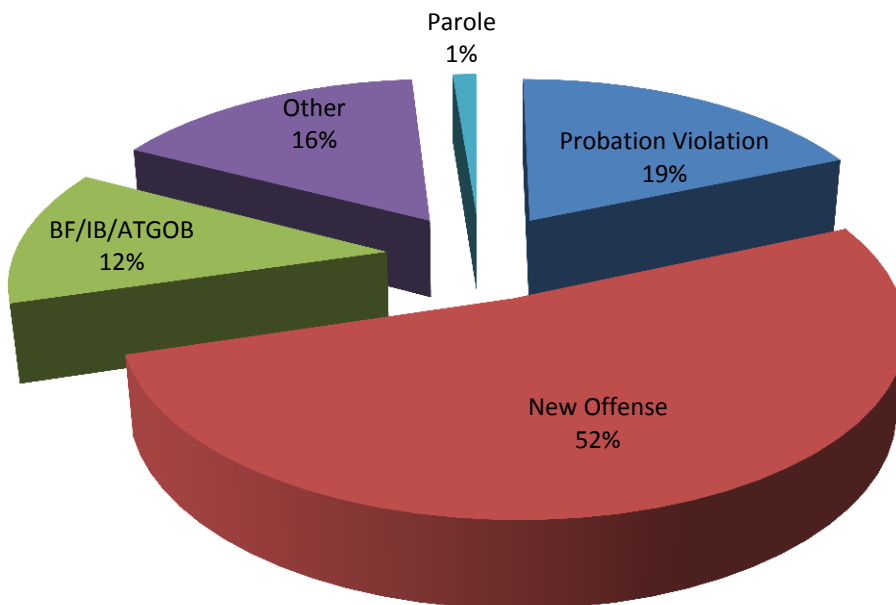
Unique Individuals  
Days In Jail

**2017**  
81  
1,109

### Pregnant Women in Jail

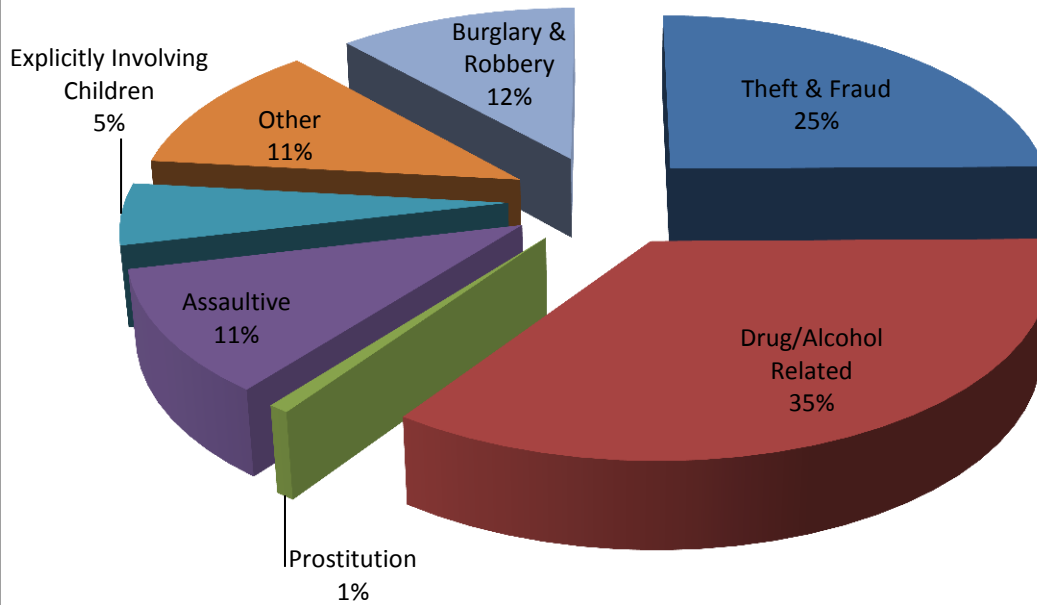


### Reason in Jail

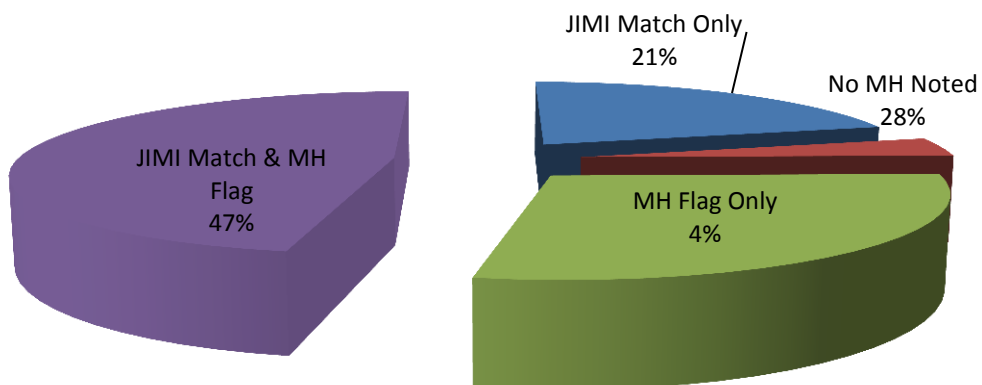




## Offense Type



## Mental Health Concerns

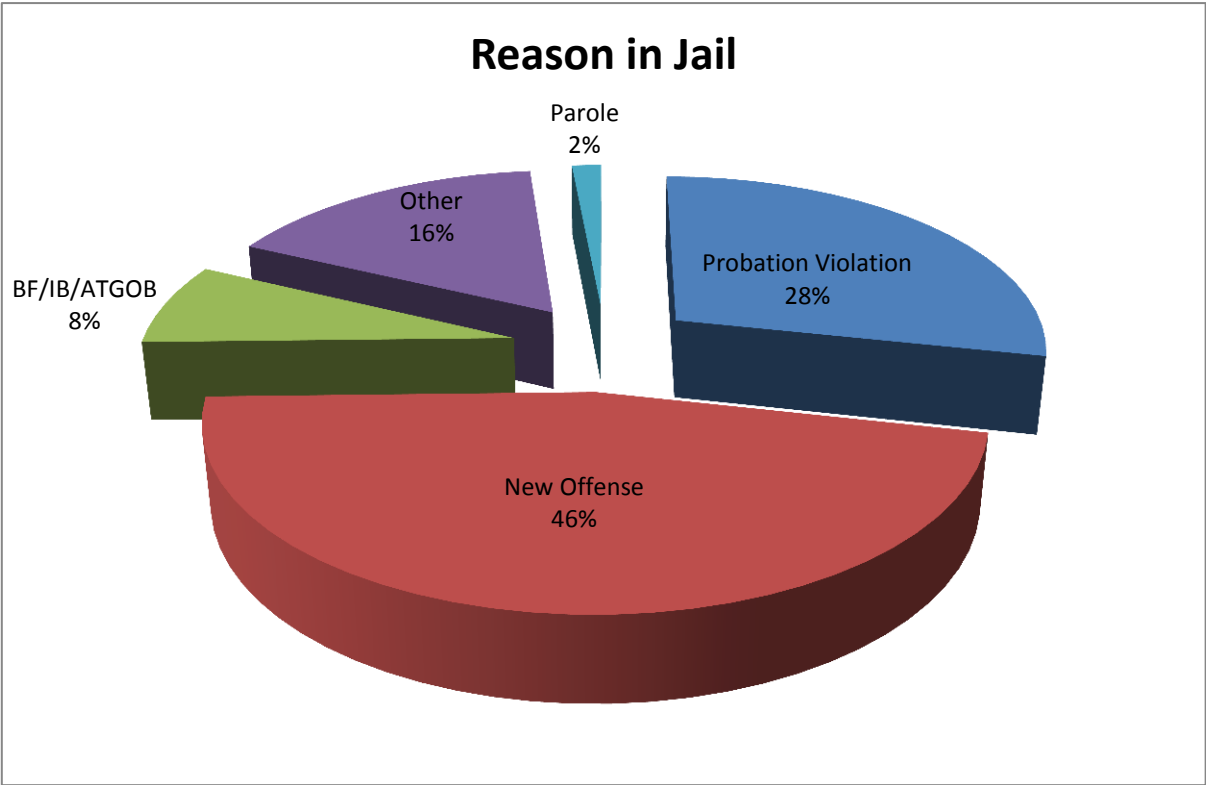
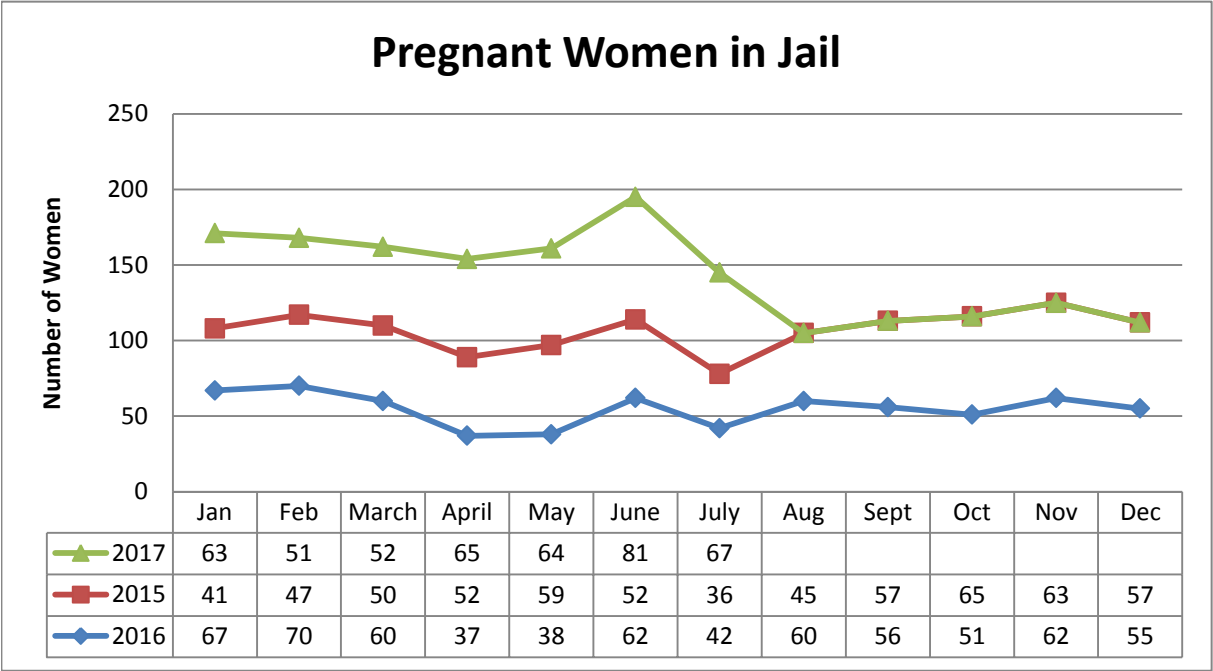


	June 2014	June 2015	June 2016	June 2017
<b>In Jail (atleast one day in month-not total at end of the month)</b>	<b>51</b>	<b>52</b>	<b>62</b>	<b>81</b>
Probation Violations	14	9	7	15
New offenses	29	41	36	42
BF/IB/ATGOB only			9	10
Parole Violations only	2	-	1	1
Other reason in jail	6	2	9	13
<b>Released Since Last Month</b>	<b>24</b>	<b>33</b>	<b>33</b>	<b>44</b>
Released to SAFPF	-	-	-	1
Released to Nexus Recovery	3	4	2	-
Released to state hospital	-	1	-	-
Released to other treatment	1	1	2	1
Released to TDCJ (ID or SJ)	1	1	2	4
Released on Probation	1	3	9	6
Released on bond	8	11	8	17
Released to Other Agencies	4	1	5	8
Released for other Reasons	6	11	2	7
<b>New Cases Since Last in Month</b>	<b>17</b>	<b>20</b>	<b>36</b>	<b>50</b>

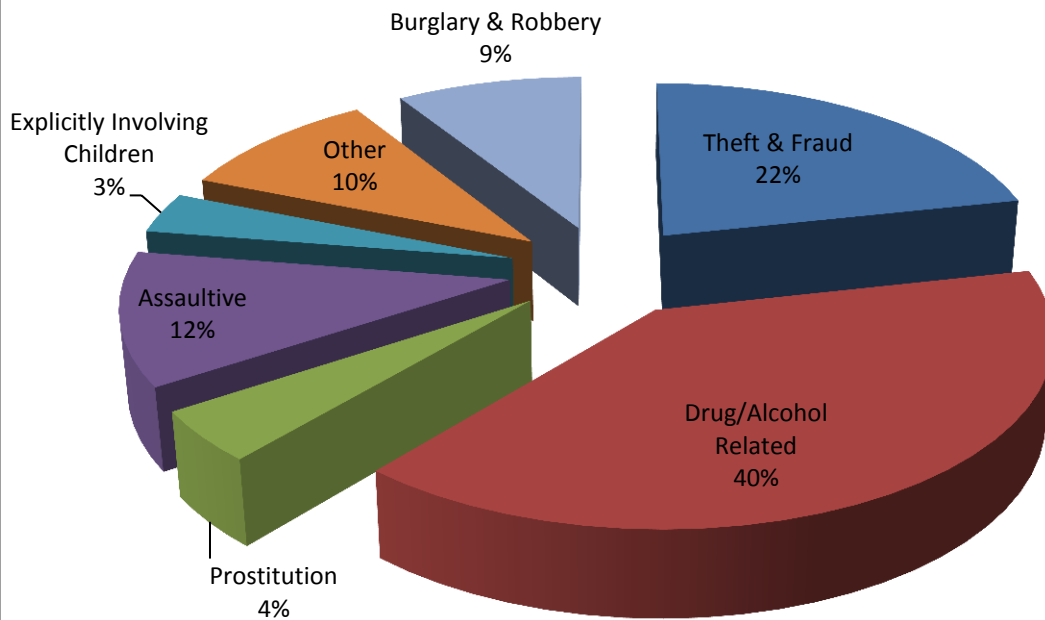
Emails To Court Coordinators for settings	-	14	2	-
Email Notifications to Probation	4	4	4	4
Email Notifications to TDCJ desk (Sgt. Temple)	4	2	3	1
Pregnant Patient Interviews for Referral Purposes	-	-	-	-
Nexus Notifications		-	-	2

Unique Individuals  
Days In Jail

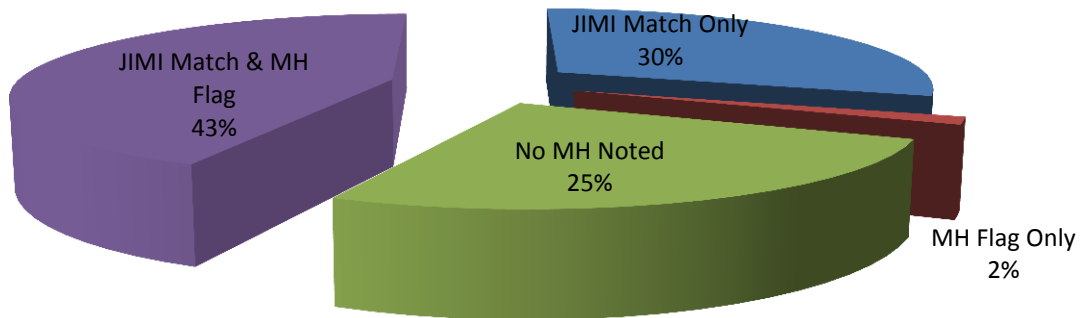
**2017**  
67  
1,176



## Offense Type

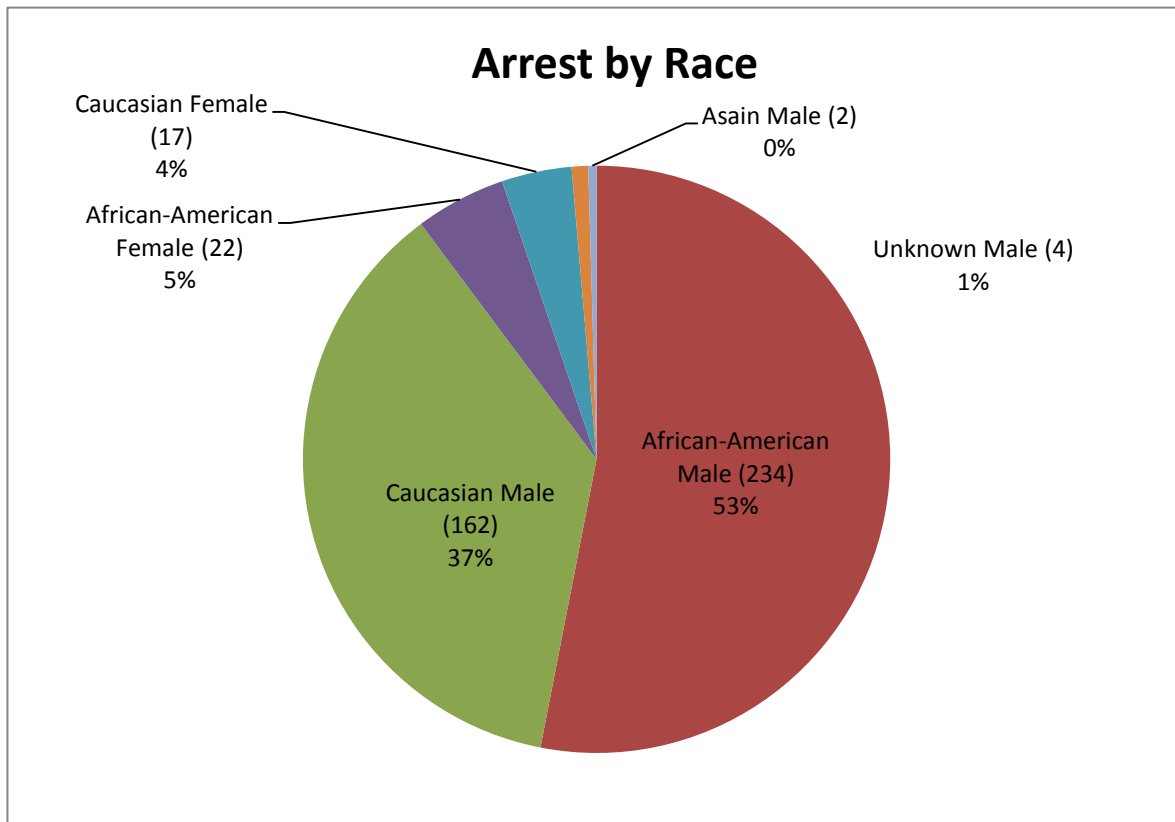
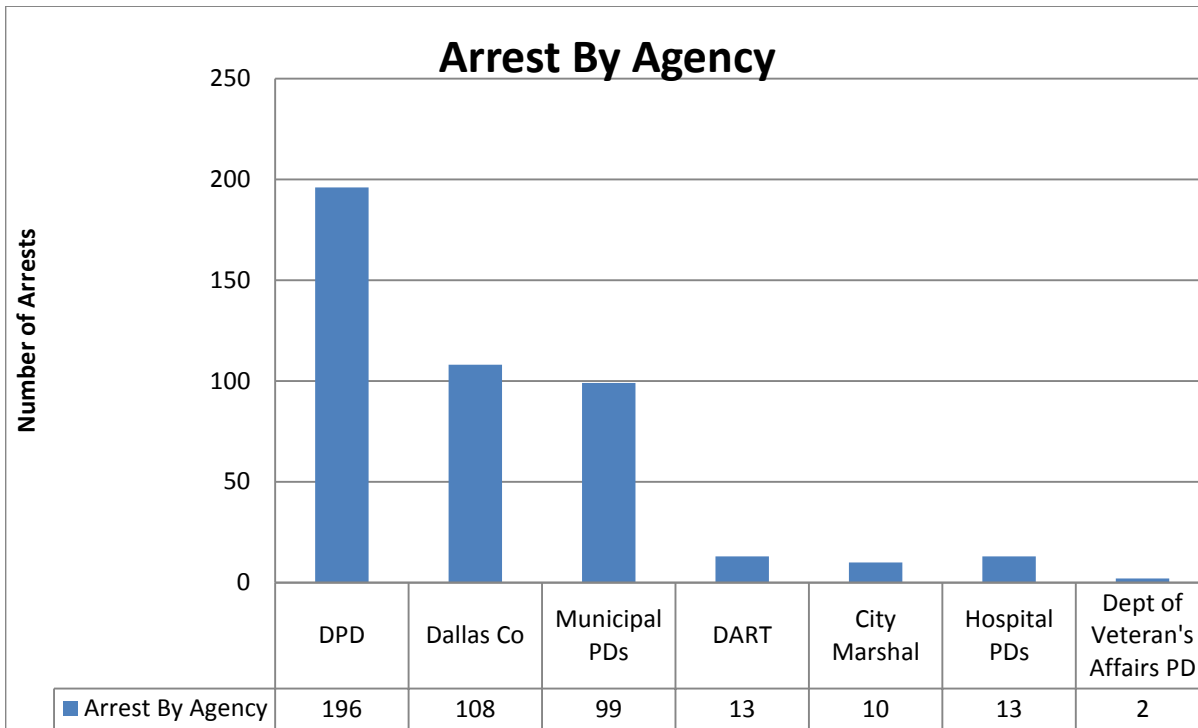


## Mental Health Concerns

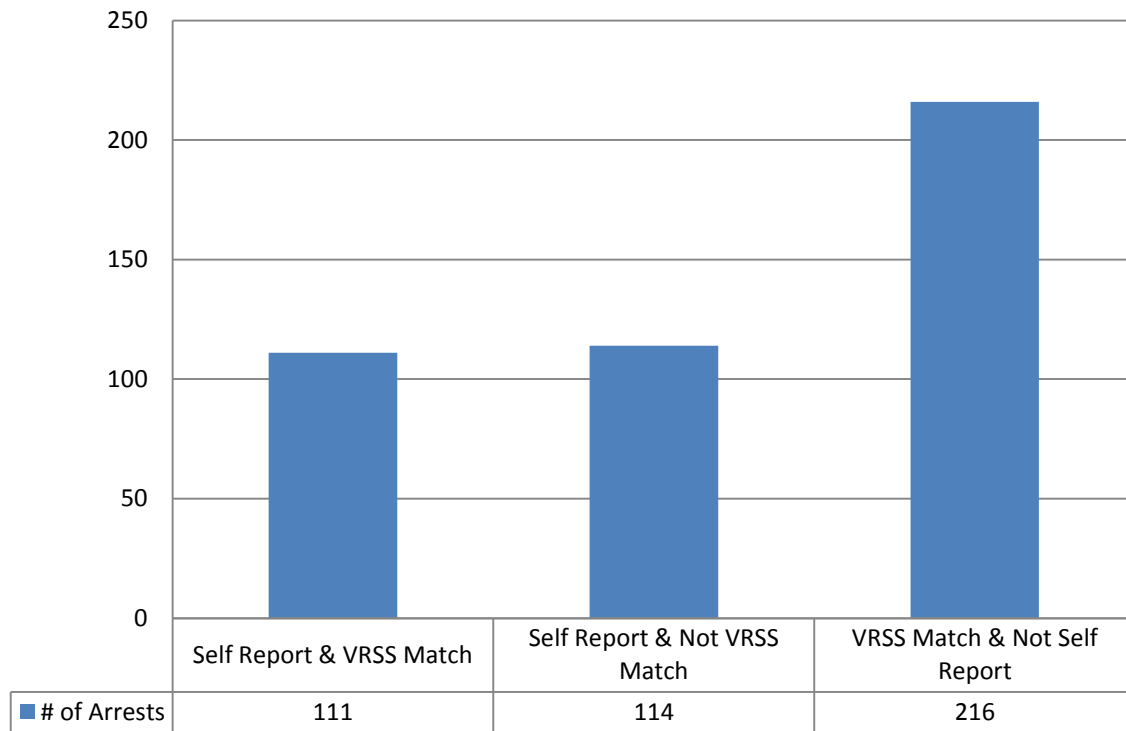


	July 2014	July 2015	July 2016	July 2017
<b>In Jail (atleast one day in month-not total at end of the month)</b>	<b>51</b>	<b>36</b>	<b>52</b>	<b>67</b>
Probation Violations	14	10	5	19
New offenses	29	25	36	31
BF/IB/ATGOB only			5	5
Parole Violations only	2	-	1	1
Other reason in jail	6	1	5	11
<b>Released Since Last Month</b>	<b>24</b>	<b>22</b>	<b>20</b>	<b>35</b>
Released to SAFPF	-	-	-	-
Released to Nexus Recovery	3	2	2	3
Released to state hospital	-	-	-	-
Released to other treatment	1	1	-	-
Released to TDCJ (ID or SJ)	1	3	2	2
Released on Probation	1	5	1	5
Released on bond	8	4	4	10
Released to Other Agencies	4	4	4	3
Released for other Reasons	6	3	7	12
<b>New Cases Since Last in Month</b>	<b>17</b>	<b>12</b>	<b>22</b>	<b>29</b>

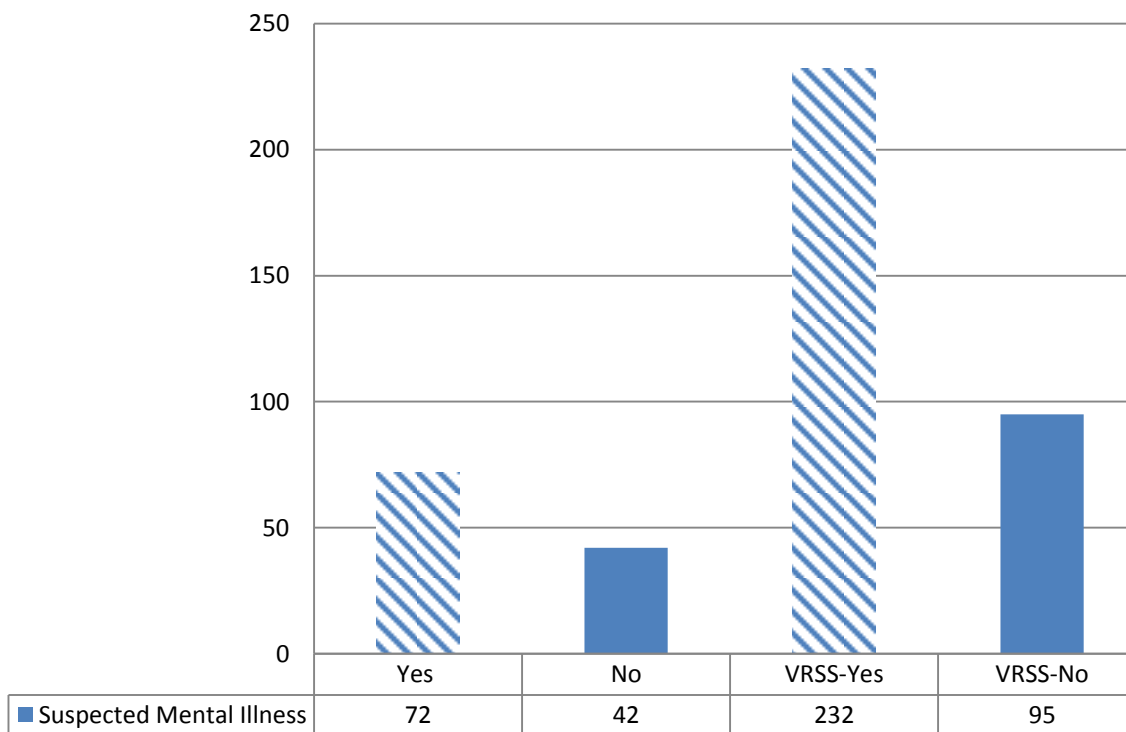
Emails To Court Coordinators for settings	-	14	2	-
Email Notifications to Probation	4	4	4	4
Email Notifications to TDCJ desk (Sgt. Temple)	4	2	3	1
Pregnant Patient Interviews for Referral Purposes	-	-	-	-
Nexus Notifications		-	-	2

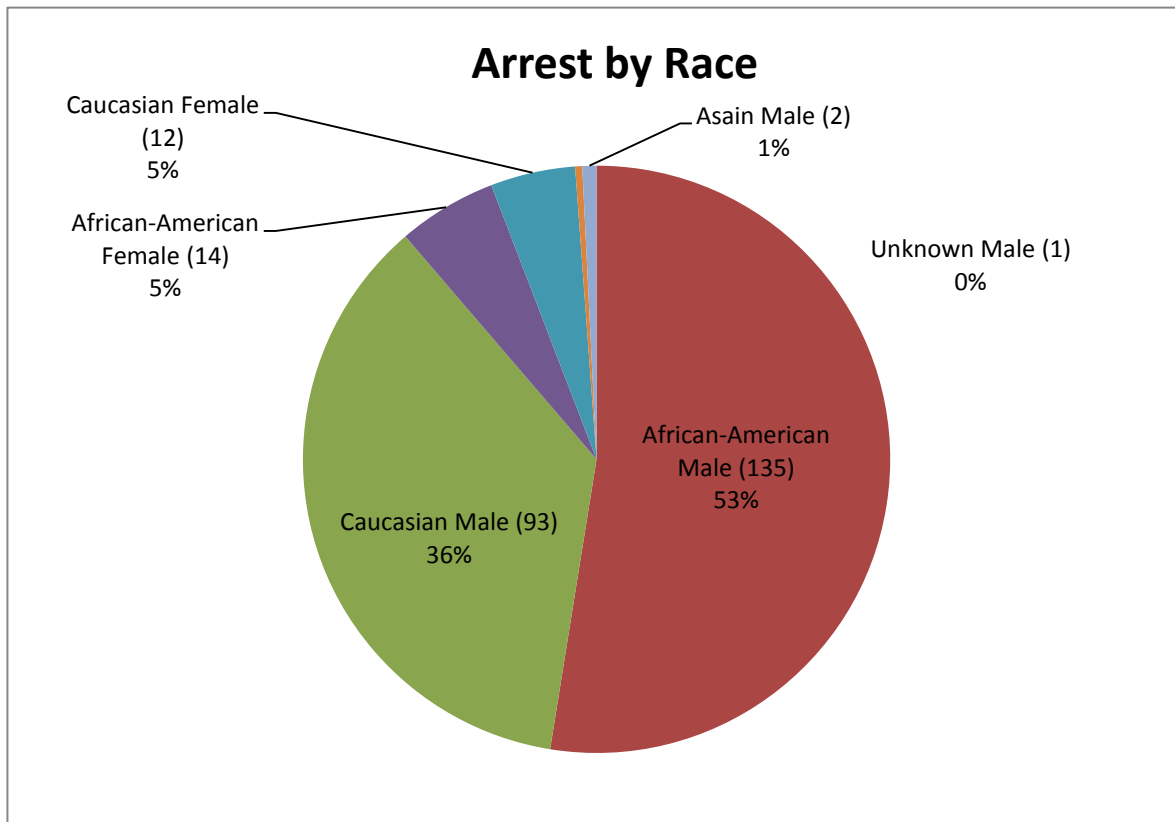
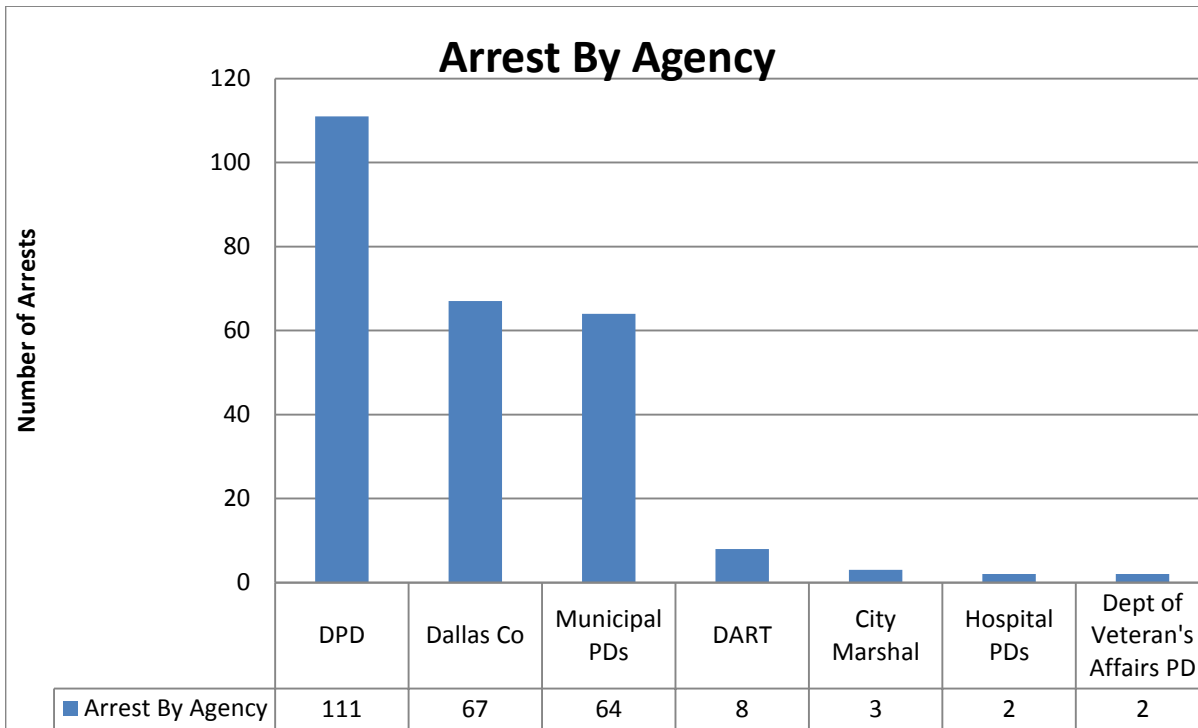


## Reporting



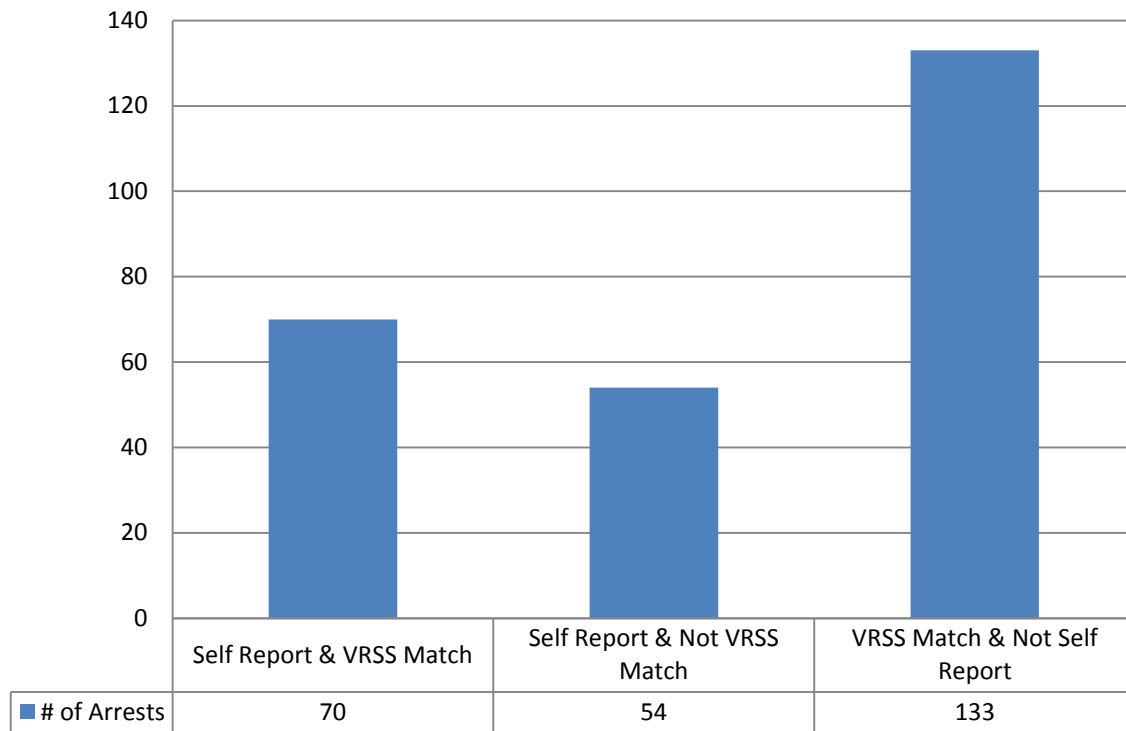
## Suspected Mental Illness



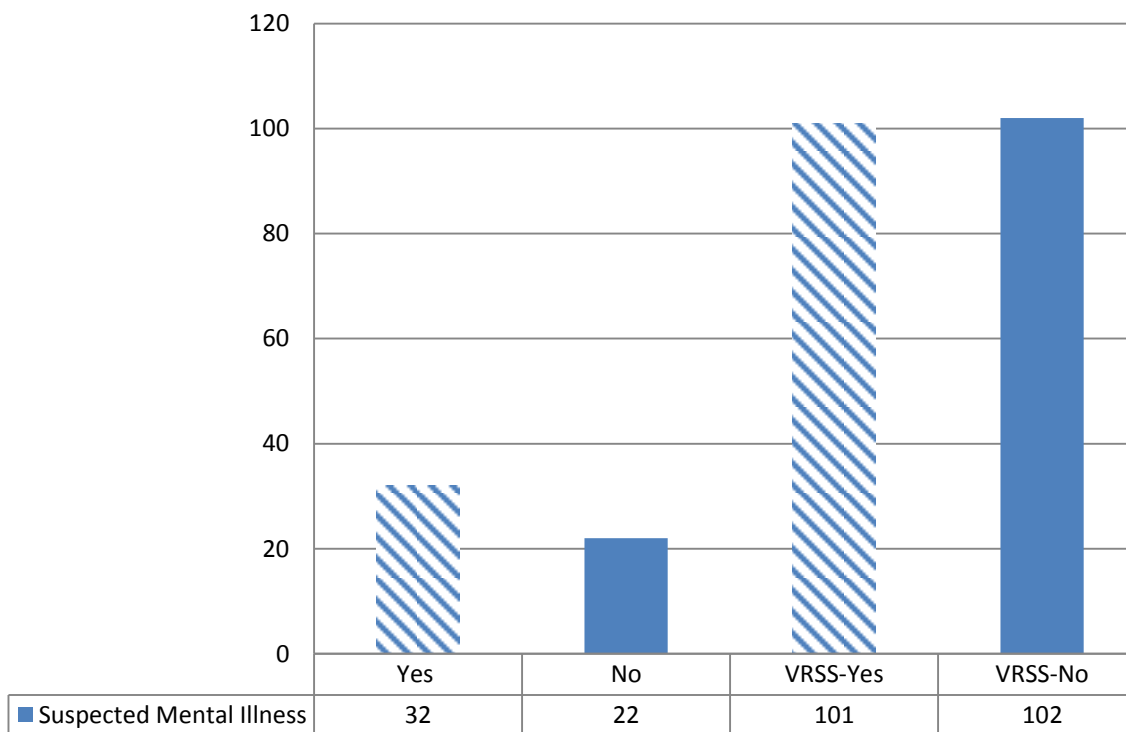




## Reporting



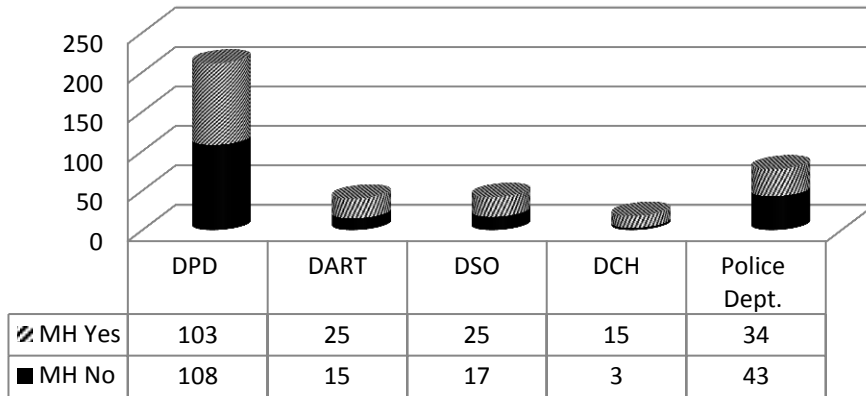
## Suspected Mental Illness



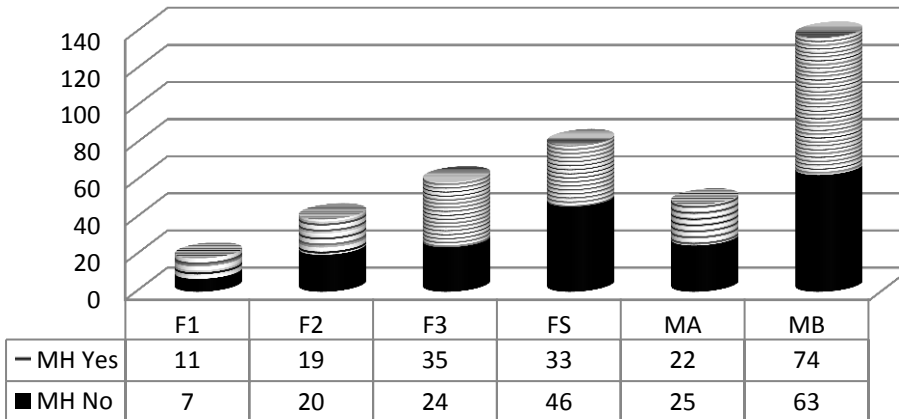
Unique Individuals  
Days In Jail  
Average Number of Days in Jail

**2017**  
372  
17,399  
44.84

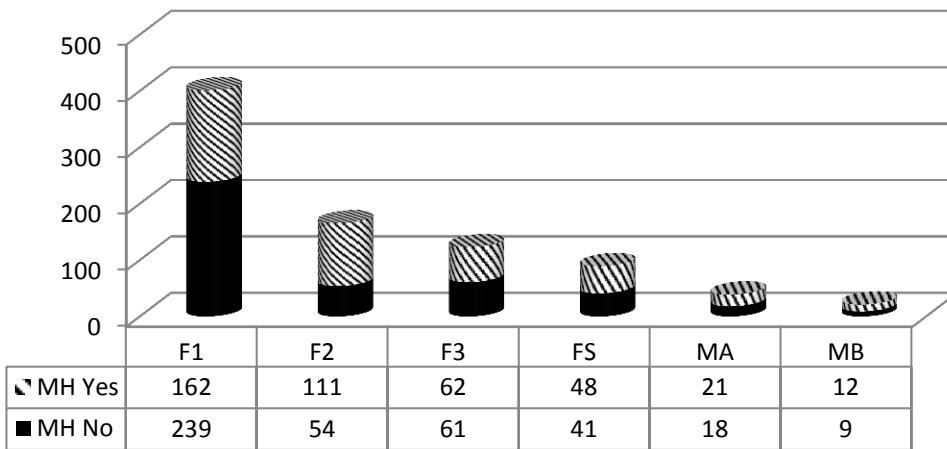
### Arresting Agency



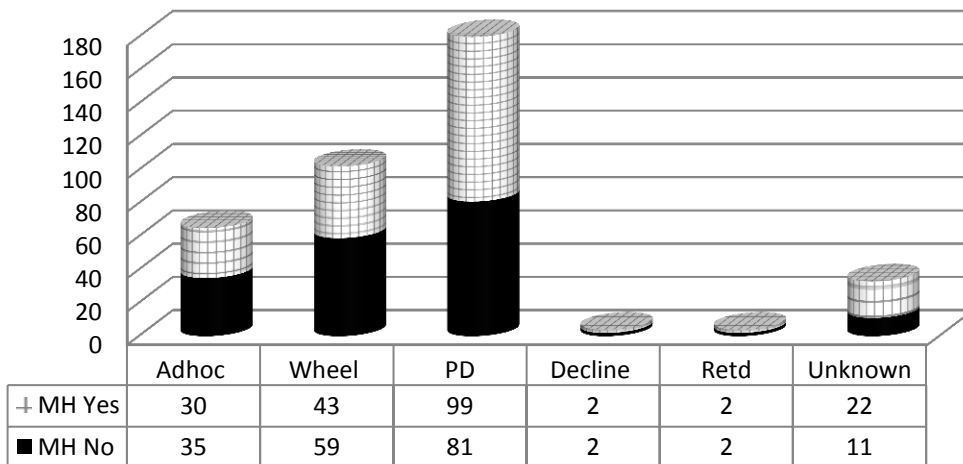
### Degree of Offense



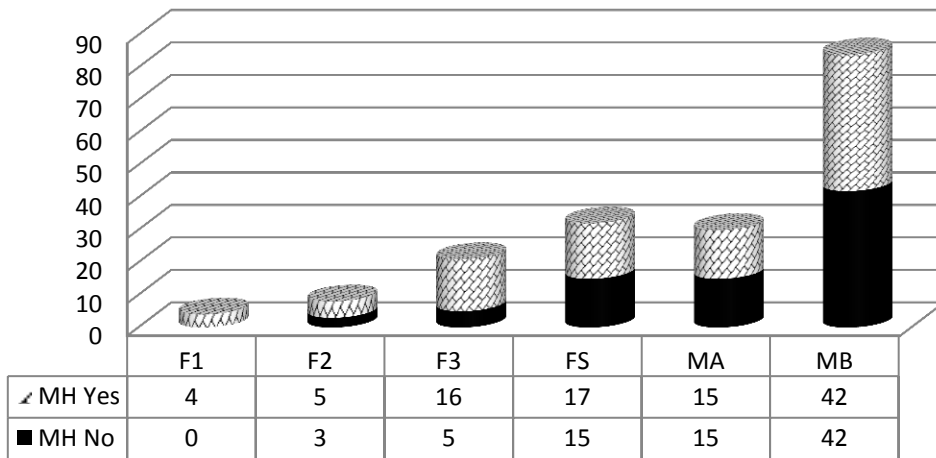
### Avg. Days in Jail



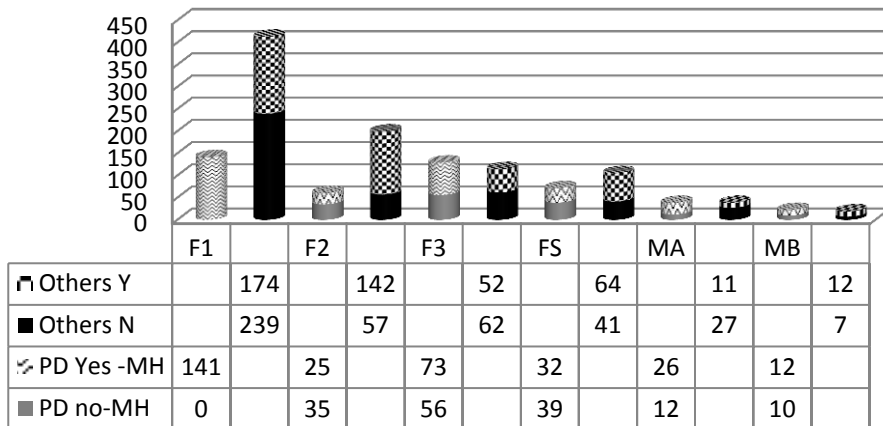
### Attorney Type



### PD Degree of Offense



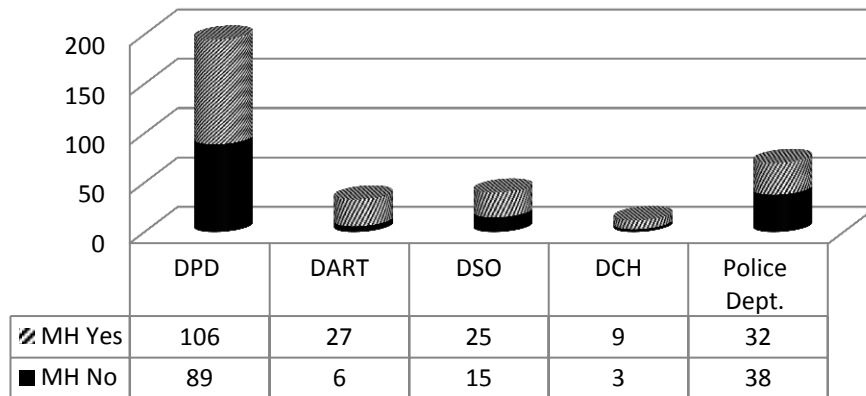
### Avg. Days in Jail Attorney Type



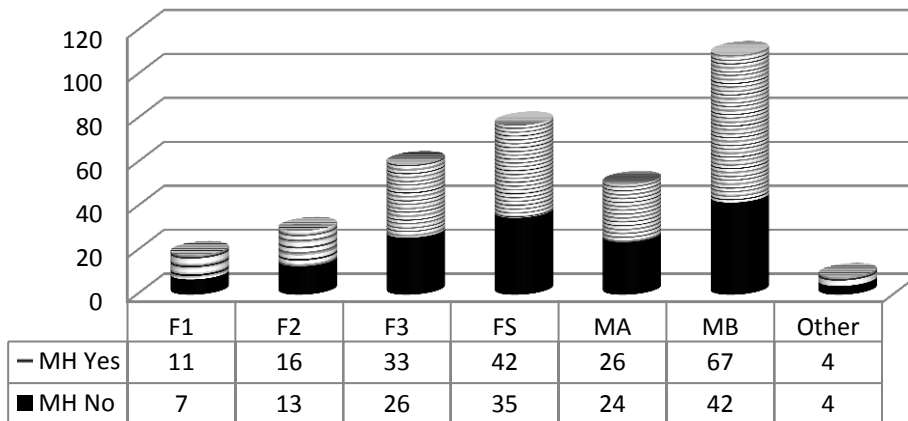
**2017**  
339  
13,791  
39.4

Unique Individuals  
Days In Jail  
Average Number of Days in Jail

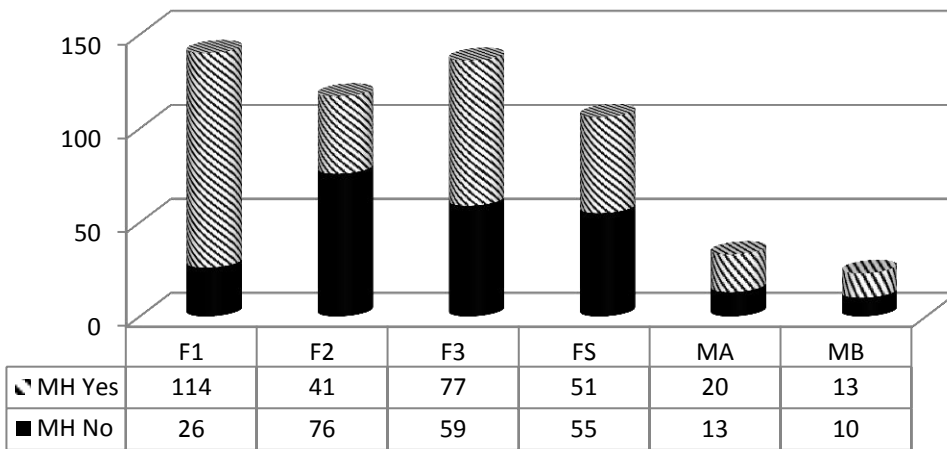
### Arresting Agency



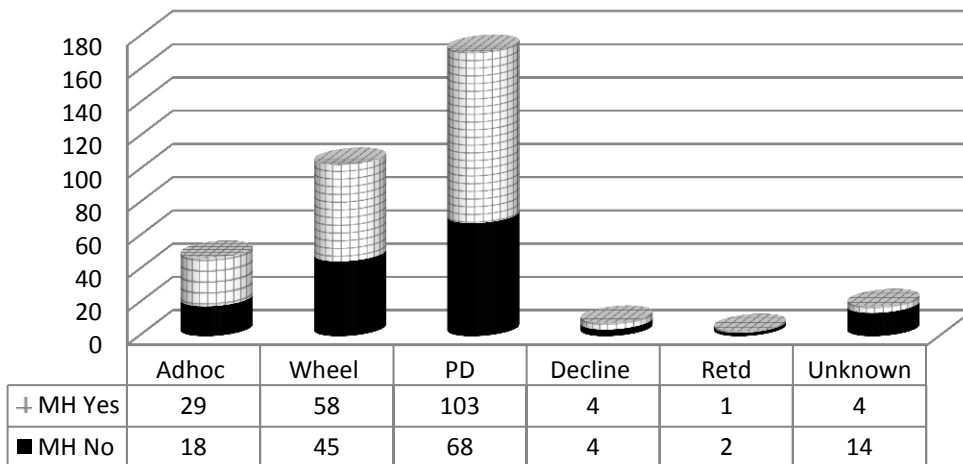
### Degree of Offense



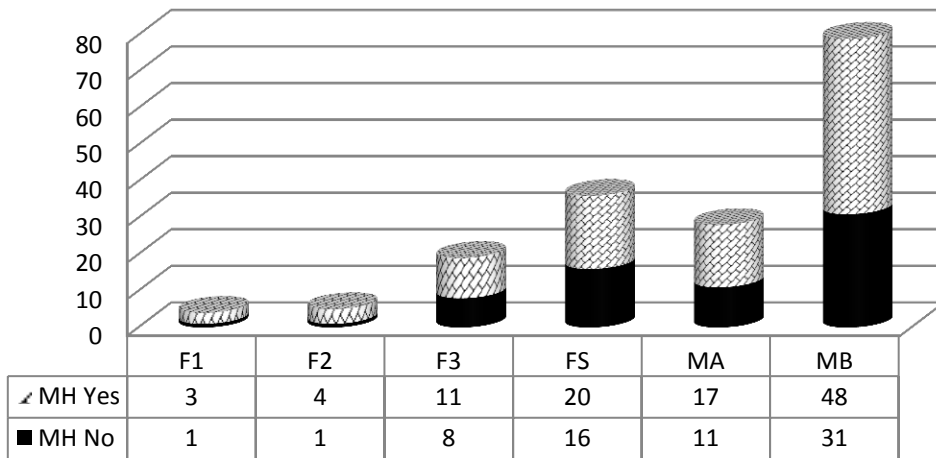
### Avg. Days in Jail



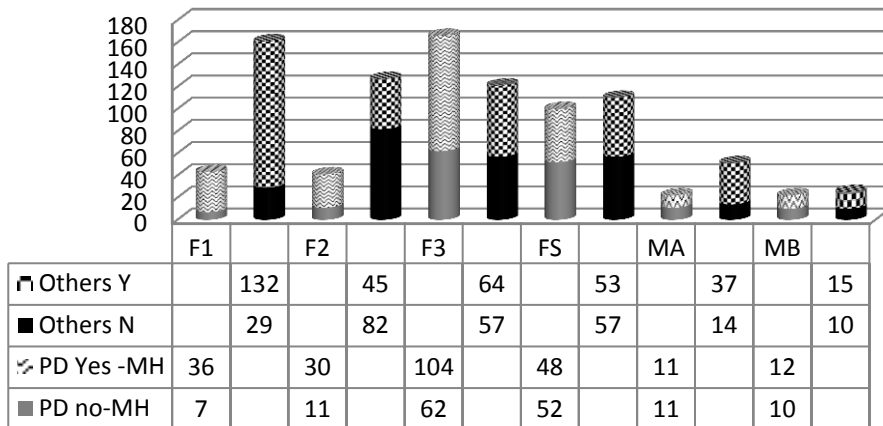
### Attorney Type



### PD Degree of Offense



### Avg. Days in Jail Attorney Type



### Monthly NorthSTAR/TLETS Intakes

Month-Year	Total inmates booked into the jail with a NorthStar/TLETS match	Book in Totals for the month	% of people with a NorthStar match booked into the jail
2007 Total	6501	93413	7%
2008 Total	8200	99580	8%
2009 Total	10636	98407	11%
2010 Total	12994	96245	14%
2011 Total	15810	90429	17%
2012 Total	17036	83524	20%
2013 Total	17762	81010	22%
2014 Total	16919	73168	23%
2015 Total	16998	69185	25%
Jan-16	1444	5836	25%
Feb-16	1594	6081	26%
Mar-16	1457	5782	25%
Apr-16	1526	6031	25%
May-16	1461	6028	24%
Jun-16	1523	5913	26%
Jul-16	1266	4891	26%
Aug-16	1487	5884	25%
Sep-16	1433	5534	26%
Oct-16	1294	5201	25%
Nov-16	1299	5100	25%
Dec-16	1188	4818	25%
2016 Total	16972	67099	25%
Jan-17	2460	5585	44%
Feb-17	3836	5442	70%
Mar-17	3727	5903	63%
Apr-17	3481	5533	63%
May-17	3619	5896	61%
2017 Total	17123	28359	60%

\*As of January 2017, the TLETS feed was included in the MH match data to the BOT impacting the overall percentage.

### Multi-Bookin NorthSTAR Tracking

2017	# Times Booked In	# Unique Clients
	Bookins 8	1
	Bookins 7	2
	Bookins 6	6
	Bookins 5	24
	Bookins 4	52
	Bookins 3	258
	Bookins 2	1581
	Bookins 1	14446
Total		16370
As of 6/13/17		



### Monthly NorthSTAR/TLETS Intakes

Month-Year	Total inmates booked into the jail with a NorthStar/TLETS match	Book in Totals for the month	% of people with a NorthStar match booked into the jail
2007 Total	6501	93413	7%
2008 Total	8200	99580	8%
2009 Total	10636	98407	11%
2010 Total	12994	96245	14%
2011 Total	15810	90429	17%
2012 Total	17036	83524	20%
2013 Total	17762	81010	22%
2014 Total	16919	73168	23%
2015 Total	16998	69185	25%
Jan-16	1444	5836	25%
Feb-16	1594	6081	26%
Mar-16	1457	5782	25%
Apr-16	1526	6031	25%
May-16	1461	6028	24%
Jun-16	1523	5913	26%
Jul-16	1266	4891	26%
Aug-16	1487	5884	25%
Sep-16	1433	5534	26%
Oct-16	1294	5201	25%
Nov-16	1299	5100	25%
Dec-16	1188	4818	25%
2016 Total	16972	67099	25%
Jan-17	2760	5585	49%
Feb-17	3839	5442	71%
Mar-17	3731	5903	63%
Apr-17	3486	5533	63%
May-17	3623	5896	61%
Jun-17	3336	5537	60%
2017 Total	20775	33896	61%

**\*As of January 2017, the TLETS feed was included in the MH match data to the BOT impacting the overall percentage.**

HARRY INGRAM				FY2017 ATLAS STATISTICS										203/HAWTHORNE			
MONTH	BEGINNING # OF PENDING CASES	+NEW CASES RECEIVED THIS MONTH	=TOTAL CASES	TBJ	TBC	PLEAS	REV	GRADUATES	PROBATIO N MODIFICA TIONS	DISMIS SALS	OTHERS	TOTAL DISPOSI TIONS	ENDING PENDING CASES **	CURRENT ATLAS PARTICI PANTS	CURRENT PARTICIPA NTS IN CUSTODY	FORMER ATLAS PARTICIPA NTS	BOND
June	15	1	16	0	0	0	0	0	0	0	0	0	16	16	2	0	14

HARRY INGRAM										FY2017 MISDEMEANOR MENTAL HEALTH COURT STATS					CCCAP1/WADE				
MONTH	BEGINNING # OF PENDING CASES	Rediverts	+NEW CASES RECEIVED THIS MONTH	=TOTAL CASES	TBJ	TBC	PLEAS	DISMISSAL	OTHER	TOTAL DISPO SITION S	ENDING # PENDIN G CASES **	CURRE NT PARTIC IPANTS	NUMBE R OF GRADU ATES	BOND***					
June	118	0	9	127	0	0	0	2	2	4	123	26	2	23					

HARRY INGRAM				FY2017 S.E.T. STATISTICS												291st	
MONTH	BEGINNING # OF PENDING CASES	+NEW CASES RECEIVED THIS MONTH	=TOTAL CASES	TBJ	TBC	PLEAS	REV	GRADUATES	PROBATION MODIFICATIONS	DISMISSALS	OTHERS	TOTAL DISPOSITIONS	ENDING PENDING CASES **	CURRENT PARTICIPANTS	CURRENT PARTICIPANTS IN CUSTODY	FORMER PARTICIPANTS	BOND
June	45	4	49	0	0	0	0	0	0	0	0	0	49				

June													FY2017 MHPD STATS												
MONTH	BEGINNING # OF PENDING CASES	+NEW CASES RECEIVED THIS MONTH	=TOTAL CASES	TRIALS	PLEAS	COND. DISM.	REVO- CATION	DISMISSALS	INCOMPET ENT	REFER ALS	OTHER COUNSEL L APPT.	TOTAL CLOSE D													
R. LENOX	145	36	181	0	3	2	0	1	0	0	5	11													
L. TAYLOR	166	23	189	1	0	0	0	1	0	3	0	5													

MALCOM HARDEN				FY2017 FELONY COMPETENCY STATISTICS												
	BEGINNING # OF CASES	NEW CASES THIS MONTH	TBJ	TBC	Alt. Trial Dispos.	PLEAS	REVO- CATION S	DISMISSALS	PROBATI ON	COMP. HRG.	EXTENS IONS	CIVIL COMMI T.	MHMR REFERR AL	CONSUL TS	OTHER	ENDING # OF PEOPLE IN OCR
June	163	12	0	0	0	3	0	2	2	3	2	0	0	0	3	23

MALCOM HARDEN			FY2017 MISDEMEANOR COMPETENCY STATISTICS													
MONTH	BEGINNING # OF CASES	NEW CASES THIS MONTH	TBJ	TBC	Alt. Trial Dispos.	PLEAS	REVO- CATION S	DISMISSALS	PROBATI ON	COMP. HRG.	EXTENS IONS	CIVIL COMMI T.	MHMR REFERR AL	CONSUL TS	OTHER	ENDING # OF PEOPLE IN OCR
June	112	41	0	0	0	3	0	16	0	23	7	0	0	0	4	18

MI Court																		
June																		
MONTH	TOTAL NEW CASES RECEIVED	NEW CLIENTS AT GREEN OAKS	NEW CLIENTS AT MEDICAL CENTER MCKINNEY	NEW CLIENTS AT PARKLAND	NEW CLIENTS AT DALLAS BEHAVIORAL HEALTH	NEW CLIENTS AT GARLAND AND BEHAVIORAL	NEW CLIENTS AT ZALE LIPSHY	NEW CLIENTS AT SUNDANCE BEHAVIORAL HEALTHCARE	NEW CLIENTS AT HICKORY TRAILS	NEW CLIENTS AT METHUEN DISTRICT RICHARDSON	NEW CLIENTS AT DALLAS PRESBYTERIAN	NEW CLIENTS AT VA	NEW CLIENTS AT WELLB RIDGE	NEW CLIENTS AT TIMBER LAWN	PROBABLE CAUSE HEARINGS HELD	NO CONTEST COMMIT	CONTESTED COMMIT	FORCED MEDS HEARING IN COURT
L. ROBERTS	256	52	13	14	47	26	6	81	16	5	0	0	0	22	3	0	4	3
L. TAYLOR	77	0	0	15	25	0	2	12	23	0	0	0	1	0	2	0	2	2

RANDA BLACK			MI COURT			*Number of new cases decreased due to increase in 46B cases.		
MONTH	NEW CLIENTS	PROBABLE CAUSE HEARINGS HELD	NO CONTEST COMMIT TO TSH	CONTESTED COMMIT TO TSH	RECOMMITMENTS	MEDICATION HEARINGS	OUTPATIENT	JURY TRIAL
June	27	0	5	7	6	17	0	0

Page 51 of 51

MICHAELA HIMES			MHPR BOND STATS		
MONTH	INITIAL ELIGIBILITY DAILY LIST	MHPR BOND APPOINTMENTS FROM DAILY LIST	MHPR BOND HEARING GRANTED	MHPR BOND HEARING DENIED	TOTAL HEARINGS
June	874	166	30	8	38

HARRY INGRAM		FY2017 ATLAS STATISTICS										203/HAWTHORNE					
MONTH	BEGINNING # OF PENDING CASES	+NEW CASES RECEIVED THIS MONTH	=TOTAL CASES	TBJ	TBC	PLEAS	REV	GRADUATES	PROBATION MODIFICATIONS	DISMISSALS	OTHERS	TOTAL DISPOSITIONS	ENDING # PENDING CASES **	CURRENT ATLAS PARTICIPANTS	CURRENT PARTICIPANTS IN CUSTODY	FORMER ATLAS PARTICIPANTS	BOND
July	16	2	18	0	0	0	0	0	0	0	1	1	17	17	2	0	15

HARRY INGRAM		FY2017 MISDEMEANOR MENTAL HEALTH COURT STATS										CCCAP1/WADE		
MONTH	BEGINNING # OF PENDING CASES	Rediverts	+NEW CASES RECEIVED THIS MONTH	=TOTAL CASES	TBJ	TBC	PLEAS	DISMISSAL	OTHER	TOTAL DISPO SITION S	ENDING # PENDIN G CASES **	CURRE NT PARTIC IPANTS	NUMBE R OF GRADU ATES	BOND***
July	123	0	12	135	0	0	5	1	2	8	127	31	1	30

HARRY INGRAM		FY2017 S.E.T. STATISTICS										291st					
MONTH	BEGINNING # OF PENDING CASES	+NEW CASES RECEIVED THIS MONTH	=TOTAL CASES	TBJ	TBC	PLEAS	REV	GRADUATES	PROBATION MODIFICATIONS	DISMISSALS	OTHERS	TOTAL DISPOSITIONS	ENDING # PENDING CASES **	CURRENT PARTICIPANTS	CURRENT PARTICIPANTS IN CUSTODY	FORMER PARTICIPANTS	BOND
July	49	5	54	0	0	0	0	0	0	0	1	1	53	23	0	0	23

July		FY2017 MHPD STATS										
MONTH	BEGINNING # OF PENDING CASES	+NEW CASES RECEIVED THIS MONTH	=TOTAL CASES	TRIALS	PLEAS	COND. DISM.	REVO-CATION	DISMISSALS	INCOMPETENT	REFERRALS	OTHER COUNSEL APPT.	TOTAL CLOSED
R. LENOX	170	28	198	0	5	1	2	2	0	0	5	15
L. TAYLOR	184	17	201	0	8	0	0	4	0	0	0	12

MALCOM HARDEN		FY2017 FELONY COMPETENCY STATISTICS														
	BEGINNING # OF CASES	NEW CASES THIS MONTH	TBJ	TBC	Alt. Trial Dispos.	PLEAS	REVO-CATIONS	DISMISSALS	PROBATION	COMP. HRG.	EXTENSIONS	CIVIL COMMIT.	MHMR REFERRAL	CONSULTS	OTHER	ENDING # OF PEOPLE IN OCR
July	165	14	0	0	0	3	2	1	0	1	3	0	0	0	8	18

MALCOM HARDEN		FY2017 MISDEMEANOR COMPETENCY STATISTICS														
MONTH	BEGINNING # OF CASES	NEW CASES THIS MONTH	TBJ	TBC	Alt. Trial Dispos.	PLEAS	REVO-CATIONS	DISMISSALS	PROBATION	COMP. HRG.	EXTENSIONS	CIVIL COMMIT.	MHMR REFERRAL	CONSULTS	OTHER	ENDING # OF PEOPLE IN OCR
July	130	16	0	0	0	0	0	18	0	12	4	3	0	0	0	19

July		MI Court																
MONTH	TOTAL NEW CASES RECEIVED	NEW CLIENTS AT GREEN OAKS	NEW CLIENTS AT MEDICAL CENTER MCKINNEY	NEW CLIENTS AT PARKLAND	NEW CLIENTS AT DALLAS BEHAVIORAL HEALTH	NEW CLIENTS AT GARLAND AND BEHAVIORAL	NEW CLIENTS AT ZALE LIPSLEY	NEW CLIENTS AT SUNDANCE BEHAVIORAL HEALTHCARE	NEW CLIENTS AT HICKORY TRAILS	NEW CLIENTS AT METHUEN DISTRICT RICHARDSON	NEW CLIENTS AT DALLAS PRESBYTERIAN	NEW CLIENTS AT VA	NEW CLIENTS AT WELLB RIDGE	NEW CLIENTS AT TIMBER LAWN	PROBABLE CAUSE HEARINGS HELD	NO CONTEST COMMIT	CONTESTED COMMIT	FORCED MEDS HEARING IN COURT
L. ROBERTS	247	67	4	13	21	0	3	69	11	4	10	0	23	22	6	0	16	16
L. TAYLOR	55	0	0	8	21	2	6	7	10	0	0	0	0	0	4	0	0	0

RANDA BLACK		MI COURT			*Number of new cases decreased due to increase in 46B cases.			
MONTH	NEW CLIENTS	PROBABLE CAUSE HEARINGS HELD	NO CONTEST COMMIT TO TSH	CONTESTED COMMIT TO TSH	RECOMMITMENTS	MEDICATION HEARINGS	OUTPATIENT	JURY TRIAL
July	21	0	3	4	2	8	0	0

Page 52 of 52

MICHAELA HIMES		MHPR BOND STATS			
MONTH	INITIAL ELIGIBILITY DAILY LIST	MHPR BOND APPOINTMENTS FROM DAILY LIST	MHPR BOND HEARING GRANTED	MHPR BOND HEARING DENIED	TOTAL HEARINGS
July	1155	138	39	4	43

The Bridge	2016	2016	2016	2016	2016	2016	2016	2017	2017	2017	2017	2017	2017	
	June	July	August	Sept.	Oct.	Nov.	Dec.	Jan.	Feb.	Mar.	April	May	June	AVG.
Bridge Night Shelter	447	483	485	453	451	433	433	451	410	427	426	445	471	447
Off-site Night Shelter Coordination	698	659	683	626	536	489	525	545	527	489	485	472	498	556
Care Coordination	1203	1185	1214	890	728	715	936	1061	933	980	875	1009	1053	983
Peer Support Services					116	141	213	308	402	335	358	488	429	310
Job Placements	42	42	45	31	43	14	22	29	17	32	20	33	33	31
Housing Placements	35	45	45	35	32	28	17	28	30	21	20	19	11	28
Metrocare Mental Health Serv.	354	378	377	367	388	338	347	377	246	373	331	343	355	352
Metrocare Chemical Dep. Serv.	19	29	29	27	23	21	28	14	19	16	13	18	18	21
Parkland Clinic*	915	782	750	868	798	692	618	702	676	676	638	796	698	739
VA Services	18	10	13	22	18	15	13	20	7	1	11	17	23	14
Judicial Re-Entry	1	2	5	5	5	3	2	6	6	4	3	5	3	4
Jail Release (General)	12	13	21	23	12	11	17	16	20	16	28	31	25	19

Each category represents *unduplicated guests* , not totals served.

\*exception - Parkland Clinic number is for total visits.

The Bridge	2016	2016	2016	2016	2016	2017	2017	2017	2017	2017	2017	2017	
	August	Sept.	Oct.	Nov.	Dec.	Jan.	Feb.	Mar.	April	May	June	July	AVG.
Bridge Night Shelter	485	453	451	433	433	451	410	427	426	445	471	427	443
Off-site Night Shelter Coordination	683	626	536	489	525	545	527	489	485	472	498	531	534
Care Coordination	1214	890	728	715	936	1061	933	980	875	1009	1053	1034	952
Peer Support Services			116	141	213	308	402	335	358	488	429	393	318
Job Placements	45	31	43	14	22	29	17	32	20	33	33	39	30
Housing Placements	45	35	32	28	17	28	30	21	20	19	11	20	26
Metrocare Mental Health Serv.	377	367	388	338	347	377	246	373	331	343	355	349	349
Metrocare Chemical Dep. Serv.	29	27	23	21	28	14	19	16	13	18	18	17	20
Parkland Clinic*	750	868	798	692	618	702	676	676	638	796	698	670	715
VA Services	13	22	18	15	13	20	7	1	11	17	23	18	15
Judicial Re-Entry	5	5	5	3	2	6	6	4	3	5	3	3	4
Jail Release (General)	21	23	12	11	17	16	20	16	28	31	25	18	20

Each category represents *unduplicated guests* , not totals served.

\*exception - Parkland Clinic number is for total visits.

NAME OF MHMR PROGRAM: Metrocare Services  
PROGRAM: SNOP

MONTH OF REPORT:6\_2017

DATE SUBMITTED: 6\_2017

	ATLAS	Post-DDRTC	STAC	Misd.	PRIDE	DDRTC	PROBATION ICM	PAROLE ICM
<b>1. Number of Offenders served at the beginning of the month:</b>	<b>10</b>	<b>47</b>	<b>18</b>	<b>29</b>	<b>3</b>	<b>40</b>	<b>46</b>	<b>105</b>
2. Number of Referrals received:	3	4	3	6	0	28	35	33
3. Number of Assessments:	3	4	3	6	0	28	19	1
<b>4. Number of Admissions:</b>	<b>3</b>	<b>4</b>	<b>3</b>	<b>6</b>	<b>0</b>	<b>28</b>	<b>19</b>	<b>1</b>
5. Average length of stay by months:	1.65	2.2	2.72	2.64	n/a	n/a	3.21	3.82
5. a. Average hours served:	7.21	4.23	3.68	6.7	n/a	n/a	4.7	4.11
<b>6. Services Utilized:</b>	<b>0</b>	<b>0</b>	<b>0</b>	<b>0</b>	<b>0</b>	<b>9</b>	<b>0</b>	<b>0</b>
6. a. Visits to ER (medical)	0	0	0	0	0	1	0	0
6. b. 23-hour Observation (psych)	0	0	0	0	0	6	2	1
6. c. Inpatient Stay (med/psych)	0	0	0	0	0	2	0	0
6. d. Jail days less than 30 days:	0	0	0	0	0	0	0	0
<b>7. Number of Discharges:</b>	<b>5</b>	<b>9</b>	<b>2</b>	<b>10</b>	<b>1</b>	<b>10</b>	<b>0</b>	<b>0</b>
7. a. Terminations (jail more than 30days)	4	0	1	6	0	0	0	2
7. b. Warrants/Suspension: (medical d.c.; abscond)	1	1	1	2	1	5	0	2
7 c. Graduates	0	8	0	2	0	5	4	15
<b>8. Number of Offenders served at the end of month:</b>	<b>8</b>	<b>42</b>	<b>19</b>	<b>25</b>	<b>2</b>	<b>58</b>	<b>63</b>	<b>80</b>
<b>9. Number of Offenders on the waiting list:</b>	<b>0</b>	<b>0</b>	<b>0</b>	<b>0</b>	<b>0</b>	<b>11</b>	<b>0</b>	<b>0</b>
<b>10. Minimum/Maximum Census per FTE allocation</b>	20-25	30-38	30-38	30-38	10-12	60	100-125	100-125
<b>11. % of FTE Assigned</b>	1	1.5	1.5	1.5	0.5		5	5
<b>12. Vacancy(s)</b>	0	0	0	0	0	1	2	1

Each FTE covers 20-25

**NAME OF MHMR PROGRAM: Metrocare Services**  
**PROGRAM: SNOP**

**MONTH OF REPORT: 7\_2017**

**DATE SUBMITTED: 7\_2017**

	ATLAS	Post-DDRTC	STAC	Misd.	PRIDE	DDRTC	PROBATION ICM	PAROLE ICM
<b>1. Number of Offenders served at the beginning of the month:</b>	<b>8</b>	<b>42</b>	<b>19</b>	<b>25</b>	<b>2</b>	<b>58</b>	<b>67</b>	<b>80</b>
2. Number of Referrals received:	5	1	3	6	0	7	16	16
3. Number of Assessments:	5	1	3	6	0	9	7	16
<b>4. Number of Admissions:</b>	<b>5</b>	<b>1</b>	<b>3</b>	<b>6</b>	<b>0</b>	<b>9</b>	<b>7</b>	<b>16</b>
5. Average length of stay by months:	1.74	2.48	3	2.53	1.16	n/a	3.4	3.21
5. a. Average hours served:	7	4.07	4.39	4.6	4.08	n/a	4.68	4.75
<b>6. Services Utilized:</b>	<b>0</b>	<b>0</b>	<b>0</b>	<b>0</b>	<b>0</b>	<b>6</b>	<b>0</b>	<b>0</b>
6. a. Visits to ER (medical)	0	0	0	0	0	0	0	0
6. b. 23-hour Observation (psych)	0	0	0	0	0	2	1	1
6. c. Inpatient Stay (med/psych)	0	0	0	0	0	4	0	0
6. d. Jail days less than 30 days:	0	0	0	0	0	0	0	0
<b>7. Number of Discharges:</b>	<b>1</b>	<b>5</b>	<b>1</b>	<b>6</b>	<b>0</b>	<b>7</b>	<b>5</b>	<b>14</b>
7. a. Terminations (jail more than 30days)	1	4	1	2	0	0	0	2
7. b. Warrants/Suspension: (medical d.c.; abscond)	0	0	0	3	0	3	0	0
7 c. Graduates	0	1	0	1	0	4	2	2
<b>8. Number of Offenders served at the end of month:</b>	<b>12</b>	<b>38</b>	<b>21</b>	<b>25</b>	<b>2</b>	<b>60</b>	<b>47</b>	<b>83</b>
<b>9. Number of Offenders on the waiting list:</b>	<b>0</b>	<b>0</b>	<b>0</b>	<b>0</b>	<b>0</b>	<b>7</b>	<b>0</b>	<b>0</b>
<b>10. Minimum/Maximum Census per FTE allocation</b>	20-25	30-38	30-38	30-38	10-12	60	100-125	100-125
<b>11. % of FTE Assigned</b>	1	1.5	1.5	1.5	0.5		5	5
<b>12. Vacancy(s)</b>	<b>0</b>	<b>0</b>	<b>0</b>	<b>0</b>	<b>0</b>	<b>0</b>	<b>2</b>	<b>1</b>

**Each FTE covers 20-25**

Outpatient Competency Restoration Monthly Totals														
	Jan	Feb	Mar	April	May	June	July	Aug	Sept	Oct	Nov	Dec	Total	2016 Total
<b>Beginning of Month</b>	<b>41</b>	<b>40</b>	<b>40</b>	<b>37</b>	<b>41</b>	<b>44</b>	<b>45</b>	<b>42</b>	<b>42</b>	<b>0</b>	<b>0</b>	<b>0</b>		
<b>Misdemeanor</b>	<b>11</b>	<b>16</b>	<b>16</b>	<b>18</b>	<b>20</b>	<b>22</b>	<b>20</b>	<b>21</b>						
<b>Placed in OCR</b>	9	4	7	4	8	5	4						41	65
Homeless @ admit	5	3	3	2	5	3	0						21	37
<b>Dispo</b>	4	4	5	2	6	7	3						31	76
Outpatient to Inpatient	2	2	3	0	3	2	2						14	20
Abscond	1	0	1	2	0	2	0						6	12
Restored and Resolved	0	2	1	0	3	2	1						9	33
Not restored -- Dismissed	1	0	0	0	0	1	0						2	11
<b>Felony</b>	<b>30</b>	<b>24</b>	<b>24</b>	<b>19</b>	<b>21</b>	<b>22</b>	<b>25</b>	<b>21</b>						
<b>Placed in OCR</b>	5	3	1	4	3	7	1						24	52
Homeless @ admit	2	0	0	1	1	2	0						6	28
<b>Dispo</b>	11	3	6	2	2	4	5						33	42
Outpatient to Inpatient	2	0	2	0	0	0	4						8	20
Abscond	4	1	1	1	1	2	1						11	11
Restored	4	0	2	1	0	2	0						9	7
Not restored -- Dismissed	1	2	1	0	1	0	0						5	4
<b>End of Month</b>	<b>40</b>	<b>40</b>	<b>37</b>	<b>41</b>	<b>44</b>	<b>45</b>	<b>42</b>	<b>42</b>	<b>0</b>	<b>0</b>	<b>0</b>	<b>0</b>	331	



DIVERT COURT FY17

FY2017	Start of Month	New admissions	DAOpt-out	Unsuccessful discharge	Graduates	End of Month
Sept. 16	151	6	0	2	7	148
Oct. 16	148	5	0	6	7	140
Nov. 16	140	12	0	6	0	146
Dec. 16	146	13	0	1	6	152
Jan. 17	152	6	2	3	6	147
Feb. 17	147	6	0	6	3	144
Mar. 17	144	9	0	4	13	136
Apr. 17	136	9	1	0	10	134
May. 17	134	14	1	5	8	134
Jun. 17	134	15	0	9	7	133
Jul. 17						
Aug. 17						
total		95	4	42	67	

## ATLAS Court

FY15*	Start of Month	New admissions	DA Opt-out	Unsuccessful discharge	Graduates	End of Month
Total		29		22	9	
Ave. Per Month		2.41666667		1.83333333	0.75	

FY17	Start of Month	New admissions	DA Opt-out	Unsuccessful discharge	Graduates	End of Month
Sept. 16	28	0	0	2	0	26
Oct. 16	26	4	0	1	0	29
Nov. 16	29	1	0	1	0	29
Dec. 16	29	1	0	2	0	28
Jan. 17	28	6	0	1	3	30
Feb. 17	20	2	0	1	0	21
Mar. 17	21	1	0	0	3	19
Apr. 17	19	1	0	0	0	20
May-17	20	5	0	1	5	19
Jun. 17	16	2	0	0	0	18
Jul. 17	14	2	0	0	0	16
Aug. 17						

\* Denotes that numbers are slightly lower due to missing data.

## DDAC Court

FY15*	Start of Month	New admissions	DA Opt-out	Unsuccessful discharge	Graduates	End of Month
Total		44		16	20	
Ave. Per Month		3.66666667		1.33333333	1.66666667	

FY17	Start of Month	New admissions	DA Opt-out	Unsuccessful discharge	Graduates	End of Month
Sept. 16	43	10	0	4	0	49
Oct. 16	49	8	0	2	4	51
Nov. 16	51	4	0	5	0	50
Dec. 16	50	5	0	0	0	55
Jan. 17	55	9	0	0	7	57
Feb. 17	31	8	0	5	0	34
Mar. 17	34	9	0	3	0	40
Apr. 17	40	6	0	4	7	35
May-17	35	6	0	0	0	41
Jun. 17	37	3	0	0	8	32
Jul. 17	31	1	0	1	0	31
Aug. 17						

\* Denotes that numbers are slightly lower due to missing data.

## *MMH Court*

FY15	Start of Month	New admissions	DA Opt-out	Unsuccessful discharge	Graduates	End of Month
Total		81		43	64	
Ave. Per Month		6.75		3.58333333	5.33333333	

FY17	Start of Month	New admissions	DA Opt-out	Unsuccessful discharge	Graduates	End of Month
Sept. 16	63	11	0	2	2	70
Oct. 16	70	7	0	0	7	70
Nov. 16	70	5	0	1	0	74
Dec. 16	74	1	0	1	3	71
Jan. 17	71	8	0	2	1	76
Feb. 17	36	8	0	9	3	32
Mar. 17	32	8	0	3	4	33
Apr. 17	33	5	0	7	3	28
May-17	28	4	0	2	2	28
Jun. 17						
Jul. 17	36	7			1	
Aug. 17						

# STAC COURT

FY17	Start of Month	New Admissions	Unsuccessful discharges*	Graduates	End of Month
Sep. 16	141	17	5	16	137
Oct. 16	137	15	3	0	149
Nov. 16	149	21	2	15	144
Dec. 16	144	11	1	0	152
Jan. 17	152	13	7	0	153
Feb. 17	153	18	6	23	169
Mar. 17	169	14	12	0	157
Apr. 17	157	14	11	0	158
May. 17	158	16	9	28	142
Jun. 17	142	12	8	0	145
Jul. 17	145	12	5	0	149
Aug. 17					

FY17	MH Current	MH admissions	MH discharges	Graduates	End of Month
Sep. 16	34	4	3	3	32
Oct. 16	37	5	1	0	41
Nov. 16	35	3	4	1	33
Dec. 16	33	2	3	0	32
Jan. 17	32	2	1	0	35
Feb. 17	35	3	2	6	29
Mar. 17	29	6	1	0	34
Apr. 17	34	5	0	0	39
May. 17	39	6	5	6	32
Jun. 17	32	3	6	0	32
Jul. 17	32	5	1	0	35
Aug. 17					

\*Unsuccessful discharges are those who absconded or were sent to their COJ for further treatment.

## STAR Court

* FY15	Start of Month	New admissions	DA Opt-out	Unsuccessful discharge	Graduates	End of Month
Total		12		8	9	
Ave. Per Month		1		0.66666667	0.75	

FY17	Start of Month	New admissions	DA Opt-out	Unsuccessful discharge	Graduates	End of Month
Sept. 16	14	3	0	0	0	17
Oct. 16	17	0	0	0	4	13
Nov. 16	13	4	0	1	0	16
Dec. 16	16	1	0	0	0	17
Jan. 17	17	0	0	1	0	16
Feb. 17	15	1	0	3	1	12
Mar. 17	12	0	0	0	0	12
Apr. 17	12	0	0	2	0	10
May-17	10	1	0	0	0	11
Jun. 17	10	0	0	0	0	10
Jul. 17	10	0	0	0	0	10
Aug. 17						

\* Denotes slightly lower numbers due to incomplete data.