



DALLAS COUNTY
Criminal Justice Department

Behavioral Health Steering Committee

Thursday, March 15, 2018

Agenda

1. Welcome and Call to Order
2. Review and approval of minutes from January 2018
3. Guest speaker (*Enrique Morris & Jessica Simmons/IPS on drug patch testing*)
4. Caruth Smart Justice Grant Update (*Mike Laughlin/MMHPI*)
5. SAMHSA Update *Laura Edmonds*
6. 530 Sub Committee* *Leah Gamble*
7. BHLT & CSP Update *Laura Edmonds/Adapt*
8. Jail Reports
 - Hospital Movement* *Janine Capetillo*
 - Veterans Reports *Shenna Oriabure*
 - Homeless Report *Shenna Oriabure*
 - Mental Health Case Matches *Laura/Mike Laughlin*
9. Public Defenders Report *Lynn Richardson*
10. District Attorney's Report *Lee Pierson*
11. Provider Reports
 - The Bridge *Kelly Kane*
 - Metrocare *Crystal Garland*
 - IPS Reports *Enrique Morris/Jessica Simmons*
12. Problem Solving Courts
 - Outpatient Competency *Janine Capetillo*
 - DIVERT *Keta Dickerson*
13. Specialty Courts CSCD *Serena McNair/Rosa Sandles*
14. Announcements
15. Adjourn

***Action and Discussion Items**



DALLAS COUNTY, TEXAS

Minutes of the Behavioral Health Steering Committee (BHSC) Meeting Thursday, January 18, 2017

Call to order and Introductions

The meeting was called to order by Judge Kristin Wade at 8:35 am. 21 staff and agency representatives/providers were in attendance with names recorded on the meeting sign-in sheet.

Minutes review and approval

The **minutes** from the last bi-monthly BHSC meeting held on October 19, 2017 (packet pgs. 2-7), were reviewed with motion and second by Leah Gamble and Lee Pierson for acceptance with no discussion or corrections. Motion unanimously passed to accept the minutes as read without objection.

Guest speaker: Jessica Simmons briefly spoke about the drug patch testing process, and they will have additional technical staff available at the March meeting to provide a full presentation informing on process, uses, protocols, and program benefits of the constant monitoring that comes with this process.

Caruth Grant: Mike Laughlin provided quarterly summary update regarding the MMHPI Smart Justice Grant with materials in the packet (packet pages 8-11). The 5-year, \$7 million Implementation Grant submitted by MMHPI awarded in October 2016, continues to be the source of our on-going \$1.174 million sub-grant to Dallas Co. that started in Jan. 2017 to address Intercepts 2-4, and part of 5. Mike gave an update on the current status and upcoming actions related to the award. The full implementation launched on August 14th at the end of the BETA phase, and all the workgroups and sub-teams for the Intercepts 2-4 continue to meet/complete tasks related to procedures/forms, Court orders, space/staff preparations, modified resource allocations, training curriculums/plans, etc. Mike also provided program activity/performance data through November 2017 reflecting:

- 9610 or 22.9% of the 41,499 book-ins screened MH positive (100% of all book-ins were MH screened)
- 1421/15.7% of those screened MH positive were found MHPR Bond eligible by Pretrial, and Court-ordered for assessment (after criminal history and risk review)
- 961/67.6% of those ruled eligible were fully assessed (most with Recommendations for Standard Intensive or Routine OP)
- 426/32.4% of those ruled eligible were not assessed (due to refusal, early alternate release, etc.)
- 1021/71.8% of those eligible were disposed by other means prior to presentation to Court
- 400/28.2% of those eligible were presented to the Court for bond decision
- 354/88.5% of those presented to the Magistrate were granted bond and released
- 46/11.5% of the 219 were denied bond and detained, and 12/6% of the 219 presented had an alternate disposition
- 354 or 100% of bond-released defendants were opened by Pretrial (15% to low level, 60% med. Level, and 20% to high level bond supervision).

- 354 releasees (100%) were connected/referred to follow up treatment by ACS and PTS
- 130 MHPR Bond cases were closed by PTS (32.6% successful/67.4% unsuccessful)

The completion of a full, start to finish, flowchart was one in November 2017 of the processes for everyone to commonly follow, along with individual team protocols, and an agreed set of data elements and definitions for tracking implementation progress and client/system outcomes among all parties. Lastly, MMHPI and the County continue to meet and work with community providers to build up treatment resources related to Intercept 5 for referral and treatment connection upon release. The fidelity reviews are done, and contracts have been executed with the first patients being accepted and treated. This will soon also include randomized assignment into control and enhanced ACT and FACT treatment groups to test new treatment options to reduce risk and increased stability and compliance.

Mike emphasized that these are still initially small numbers, but growing and that we will continue to expand, but in the meantime, the smaller numbers have made it easier for us to address and overcome barriers and problems as they arise. Ultimately, the flowchart and data guide will assist us in sharing information, resolving bugs, and tracking program activity, performance, and outcomes.

Dawn McKeehan with MMHPI also presented updates on progress with Intercepts 1 and 5 advising that the City and Meadows have jointly made great strides in setting up the new Intercept 1 pre-arrest diversion protocols, staffing, and resources for the emergency response RIGHT Care Teams with most training being completed, and beta testing that began in December. They have outfitted an unmarked vehicle and began testing of the clinical imbeds. Dawn mentioned there will be media event at Dallas Fire Station #6 soon. The initial focus will be in the place with the greatest concentration in the South and South Central of Dallas. As mentioned above, with Intercept 5, all the contracted providers have reviewed and approved new agreements, and training for beta implementation is down to the last few sessions. She was also very complementary of the identified providers as to their creativity and overall flexibility in preparing for the Intercept 5 implementation.

Reminder that housing services will be built up within the Caruth Grant Intercept #5 to include new processes for HMIS enrollment prior to jail release. Additionally, HUD has identified and targeted the super utilizer for service impact which also includes emergency shelter fund and rapid re-housing programs.

BHSC Data and Reports – Judge Wade

Program and Department Updates: The program/outcome data, updates, and workload reports were presented and accepted via relevant dept./agency staff for the SAMHSA Grant, 530 Subcommittee, BHLT/CSP, Public Defenders, District Attorneys, CJ Dept. Jail reports, as well as provider reports (The Bridge, Metrocare, and IPS), and the various Problem Solving and Specialty Courts (see packet pgs. 12-51 for details).

Mike presented the SAMHSA Grant update in Laura's absence along with associated data and activities (see packet pg. 12). They continue to be above their target, and completed the last year of their current grant. It was also reminded that each of the Specialty Courts will have to be certified to continue services and funding. Judge Wade and Leah Gamble reminded everyone to promote it and make referrals.

Shenna presented a summary of November 8, 2017, 530 Subcommittee minutes, activities and expenses. The 530 Subcommittee recently approved and needs BHSC approval for \$600 expenditure from budget line items for FY 2018 in Veterans Court program incentives, and \$22,000 at \$1375/person for 16 staff (one from each specialty Court) to attend this year's National Drug Court Conference in Houston. Motion made and seconded by Mike Laughlin and John Henry respectively with unanimous approval without discussion or objection. Dallas Metrocare also plans to fund and send 2 of their own staff, and Dallas County has placed a block of rooms for now for reservation at the block rate. It was emphasized this will not cover all costs, so programs and agencies will have to make up the difference on their own.

CSP stats and metrics for October through November were presented/reviewed (see packet pgs. 15-20), and they are exceeding YTD outcomes and DY metrics. There continues to be an uptick in the numbers due to the new Caruth MH PR Bonds. Terrell Hospital Connection Project for improved release planning continues to go well.

Charlene and CSP providers continue to communicate with NTHBA to facilitate the transition planning since the care manager and Specialty Court Aftercare Engagement Packages currently go through CSP and as of this year are coordinated through NTBHA. Process continues to go well. The Medicaid 1115 Transformation Waiver was renewed since our last meeting, but will receive increasingly reduced amounts in the later years of the 5-year renewal. We will have to develop alternate resources for sustainability in the meantime. This currently funds many services and operations like IPS Aftercare services, Transicare Continuity of care operations, MHPR Bond assessments via ACS, Salvation Army Drug Treatment beds via CSCD, Transicare transport/treatment linkage services, hospital returns and transport, etc.

Cottages Update: Census is not full but filling back up more rapidly in recent months. Referral criteria include multi-bookings, MI diagnosis, and homeless. Also they are permitted to have income, but don't have to meet HUD definition, no sex offender cases, and Arson cases are reviewed individually. City Square case workers will interview/screen and help to gather documents, etc. It is a voluntary process using the Housing First Model with incentives. National recidivism rates are low with the population and model. Looking to expand the model in future years.

Lynn remarked how great the recent presentation at BHLT was by City Square execs., and recommended we distribute that to our BHSC list. Judge Wade also recommended they come present in the future to our group. Reminder this is done through standard DHA voucher or flat \$50/month rent payment.

Jail and hospital movement, pregnant defendants, and homeless and Veteran data and reports were presented by Shenna and are found in the meeting packet on pages 21-34. We continue to await word about the recent efforts to start up a jail-based competency program via SB 292 via Caruth seed money along with leadership and assistance of Parkland Hospital. We will know for FY18 in the next few weeks, and FY 19 sometime in Sept. 2018 which will be a new set of money to requalify for then. The target is for more of the "chronic" cases vs. "acute, and that they which will include mechanisms by Parkland to minimize use of forced medications. The DA's Office has made it clear that all competency cases will be reviewed individually as to whether they will qualify and allowed to be accepted into this program based on their criminal history, medical/mental condition, and current case details. They will also review those who may qualify or be converted instead to the conditional dismissal program, civil commitment or other. This also includes those waiting for NGBI (not guilty by reason of insanity) review at a maximum state hospital facility (e.g., Vernon State Hospital). Terrell State Hospital continues to have a lag in acceptance causing the wait list to increase.

Veteran's prevalence continues to be under counted via self-report and data for the quarter is shown on pgs. 22-26. They continue to rapidly cycle out of the jail making it hard to get the designated staff catching them before release due to limited staffing. Small number of these goes to the Veteran's Court.

Homeless numbers are on page 26-34,. Getting IDs is still an issue, and Joyce White recently reminded that they noted that once they are out of homeless status for 90 days they are being removed from the list for services, and they are working to address this issue.

Monthly CCQ match: Mike Laughlin provided the MH prevalence for the 4th quarter which according to TLETS is still high at 63% (packet pg. 35). The Jail MH screen is still too inclusive leading to too many false positives, and data sources are still being reviewed with IT to refine the data feeds and hopefully resolve the issue soon. The NTBHA feed is also being added soon to the data collection which should help in more accurate triaging and identification.

All other department and agency data reports and program updates were accepted as read, and can be reviewed in the meeting packet.

Lynn Richardson presented the **Public Defender MH case data and reports (pgs. 36-38)** noting they will soon have the Smart Justice numbers added also. They are now also closely tracking all specialty court participants. No other comments at this time.

Lynn and Vickie mentioned the need for some MH training for the local defense bar (DCDLA). A subcommittee is to be formed and everyone is asked to email Mike if they are interested in developing the material and/or conducting the training. DCDLA will arrange/pay for CLE credits.

Lee Pierson provided the **DA data updates and report (pgs. 39-40)** for the quarter showing 237 MHPR Bond cases handled and 87 MH cases opened. Additionally, Blake Reyna and Ron Wright were recently added to handle felony courts, are being trained, and will be starting attend coming meetings soon. It was mentioned by Judge Wade that SET numbers are low, and that inviting Julie to coming meetings would be helpful.

Lee also mentioned there has been some major restructuring in the DA's Office and all the MH programs have been moved under Julie Turnbull in the Reformatory Justice Division.

Provider Reports

Kelly Lane from The Bridge reported their numbers (pg. 41) are pretty consistent with no changes, or comments/concerns expressed. DHA is continuing to take briefings again for placements. They have recently renovated the Kennel for the dogs to accommodate more folks. They are sheltering with the recent inclement weather with about 80-100/night.

Metrocare: Crystal Garland presented Metrocare data/reports (pg. 43-44) advising that there was a slight drop in numbers in December. DDRC remains pretty much at capacity, and Atlas is picking back up.

IPS: Supplemental agenda insert was provided by Enrique/IPS. He reminded everyone that service slots are continually available, acknowledging that their service numbers have grown but their service capacity has not always grown equally as fast. He reminded everyone that they can communicate with any admission/intake needs by phone or at www.ipsrecovery.com. Their data show majority of their service numbers are SUD, followed by psychiatric services, detoxification, and MAT services. Gender and ethnic breakdowns remain stable.

He also updated the group on the collaboration with Austin St. Shelter that started about 6 months ago. They have 409 beds for males 45 yrs. old +, and continually full with consistently half with BH involvement and symptoms despite the fact that there are no on-site BH services being provided there at this time. IPS is partnering with them to fill this gap. Judge Wade spoke at length about how much IPS has done for the specialty courts and finding clients and following up with them.

NTBHA: John Henry reported that engagements are up, and good things continue to happen as the expansions are implemented to include increased capacity for OCR and new money/collaboration to implement SB292 Collaborative locally. We should hear on that funding in the next few weeks, and HB13 sometime in March. Additionally, HHSC awarded approximately \$1 million additional treatment funds to NTBHA to target the Opioid epidemic. NTBHA is still awaiting the contract from HHSC, but will roll those dollars out to contracted community treatment providers at that time.

Specialty Courts: Janine presented OCR Court data (pg. 45). It was reminded that Governor's Office is no longer funding attorneys for Specialty Courts. Keta presented DIVERT Court numbers on pg. 46, and reminded everyone to look at the material recently sent on the FREE HHS training at UTSW on the Opioid Epidemic on Feb. 20-21. She also emphasized the importance of planning for the 2018 NADCP Conference in Houston. There will also be NDCI training for Drug Courts in Dallas in June.

Rosa Sandles was present and provided the other Specialty Court numbers for post adjudication (pages 47-51) noting that the numbers stayed stable through the holidays. Metrocare continues to be CSCD's primary MH treatment source; everyone is reminded to refer any potential client with high mental health needs to Metrocare.

Funding: Everyone was again encouraged to keep good track of program/outcome numbers to ensure they are accurate and that your target population makes up most of your slots and program effort.

Announcements

BHSC meeting start time: discussion and poll about a later start time to maybe 930am. Judge Mays mentioned many do not arrive at the normal 830am start time. Nothing was decided yet.

Housing: housing training for cross-disciplinary groups will be held again soon with date forthcoming.

Homeward Bound continues to complete the licensing process at their new location at 5300 University Hills, Dallas, Texas 75241 with still unknown reopening date. Information will be provided as soon as known.

Dallas Metrocare's new Jail Liaison has been developed and approved and will be located in the Jail in West Tower, 3rd floor. The new liaison is Sheldia "Shelly" Harris who will be starting very soon. They will have an email address assigned to her/the program that will be used for referrals and ongoing communication.

Program resources for Specialty Court participants Judge Mays asked if folks are having trouble finding resources for their clients, and to email her so she can provide assistance. She also advised that she has a resource for very favorable car loans for those at \$1500/mo. income which is not based on credit.

CJD at Governor's office has increased and moved some funding streams away from Specialty Courts (particularly for prostitution cases) where human trafficking is involved so that these will be viewed and handled more as victims vs. offenders with more money spent in this area. A lot more money has been allocated to this via the Governor's request, and Grant applications for this are due by February 20th.

Adjournment

The meeting was adjourned by Judge Wade at 945am. The next bi-meeting is set for Thursday, March 15, 2018, at 830am in the same location. Reminder was provided to everyone to submit their monthly stats to Mike Laughlin via email by the 2nd Friday of each month for tracking and distribution.

Meadows Mental Health Policy Institute

Caruth Community Update — Fourth Quarter 2017

The Caruth Smart Justice Planning Grant Phase II proposal was submitted to the W.W. Caruth, Jr. Foundation at the Communities Foundation of Texas on July 15, 2016.¹ The Meadows Mental Health Policy Institute (the Institute) and its partners began implementing the Caruth Smart Justice Project (Caruth Project) in January 2017. The project is aligned with and supports the local behavioral health system and its efforts to meet the needs of residents with mental health issues in North Texas. At the end of Year 1, the new services and revised processes developed during the planning phase of the Caruth Project are being implemented for each of the points of contact within the Sequential Intercept Model.

The Caruth Project has developed an active collaboration with community providers and stakeholders to meet the goals of reducing the number of people with mental health needs who are detained in the Dallas County Jail and increasing access to high quality community based treatment. The Institute has formal agreements with the Dallas Police Department (DPD), the Dallas Fire and Rescue Department (DFRD), Parkland Health and Hospital System (Parkland), and community providers of Assertive Community Treatment. Through the Dallas County Criminal Justice Department (DCCJD) and the Dallas County Sheriff's Department, Dallas County has collaborated with Parkland's Jail Health staff to transform screening and assessment procedures to ensure that everyone is screened for mental health needs upon admission to the jail. The screening protocol connects individuals who need a full assessment to existing resources and initiates the parallel process of assessing risk to determine eligibility for release and developing a supervision plan that includes treatment. These changes have resulted in more people being released on no-cost personal recognizance bonds and connected to community-based treatment and appropriate court supervision. The improved screening and assessment procedures identify individuals with complex healthcare needs who are caught in the trap of "super-utilization" of emergency and law enforcement services – the core target population for the project. Institute staff and project partners have facilitated training opportunities for clinical personnel, law enforcement, judges, and community supervision staff who come into contact with defendants who are eligible for ongoing Caruth community treatment services. The Institute thanks its partners for their continued support and energy in advancing the Caruth Smart Justice Project.

¹ On October 5, 2016, the trustees of the W.W. Caruth Foundation at the Communities Foundation of Texas approved the grant proposal, which enables the Meadows Mental Health Policy Institute to work closely with Dallas County, the City of Dallas, and a broad array of partners to implement the Dallas County Smart Justice Project.

Intercept 1 (Law Enforcement)

Intercept 1 work continues to progress despite many changes and challenges, including the leadership changes at Dallas Police Department (DPD) and the addition of Parkland Health and Hospital System (Parkland) as the clinical partner in the deployment of multidisciplinary response teams (MDT's). Parkland has agreed to provide the mental health clinicians for the MDTs and the clinical support for 911 dispatch, adding an experienced clinical partner to the teams as well as a link to the Parkland healthcare system as a key provider. The Institute and other partners believe that with Parkland stepping into this key role, the project will become stronger and more successful. Parkland also adds a county-wide presence to Intercept 1 efforts. Because of these changes, in November 2017, a business associate agreement was drafted and signed by the City of Dallas to initiate collaboration with Parkland and the Dallas City Council. The MDT's will be housed at DFR Station #46 in the DPD's South Central Patrol District. The DPD procured and outfitted a state-of-the art Tahoe vehicle for the MDT's. The vehicle is equipped with bullet resistant glass, storage space, and has no law enforcement markings, which will reduce the stigma associated with a law enforcement response.

The DPD released job descriptions for the program, posted position announcements, began reviewing applications on October 25, 2017, and selected program officers in November 2017. An MDT observation period, which is a common practice in public safety programs, began on November 29, 2017, and lasted through December 18, 2017. At the conclusion of the observational period, the leadership teams reviewed how the team functioned and completed case reviews of individuals served. In December, the City Council Public Safety Committee approved the Parkland contract change and moved the proposal forward for full City Council review in January 2018. Full launch, including adding Parkland clinicians to the MDT's, will begin immediately after final City Council approval.

Intercept 2 (Initial Detention/Initial Court Hearings) / Intercept 3 (Jails/Courts) / Intercept 4 (Re-Entry)

The three work groups within the Dallas County criminal justice system, each lead by a criminal court judge, are completing key tasks flagged for improvement during the beta test launch that began April 17, 2017, and ended in August 2017. Full implementation was launched on August 14, 2017, and continues to make progress towards project goals.

DCCJD staff have developed internal data tracking tools to monitor program activities and performance outcomes; tracking tools are undergoing continual revisions to better reflect the measurement needs of the project. Highlights of the program activity and performance data for the period of April 17, 2017 through November 2017 are as follows:

- 41,499 defendants booked into the jail were screened for mental health needs.

- 9,610 of these defendants screened positive for possible mental health needs.
- 1,421 of the 9,610 passed initial screening and were court-ordered for assessment.
- 400 of eligible defendants were recommended for release on a personal bond.
- 354 of those recommended for release were granted a personal bond release with conditions that included treatment and supervision by pretrial services staff.
- 354 releasees (100%) were connected/referred to follow-up treatment by Adapt Community Solutions in coordination with pretrial services.

The workgroups met in early November 2017 to assess progress, modify plans and goals based on data from the beta launch and early implementation period, distribute newly created core working documents, and develop a plan and timeline to accomplish the remaining tasks. The groups are now in the process of refocusing their work on continuous quality improvement activities, using data to make changes and improvements as needed. Lastly, Dallas County is working closely with the Institute and the Caruth treatment providers to finalize and streamline the processes for identifying individuals with complex needs who repeatedly cycle through jail and emergency services and referring them to the Smart Justice intervention teams.

Intercept 5 (Community Corrections and Services)

Institute staff completed the initial baseline fidelity reviews with each of the Assertive Community Treatment (ACT) and Forensic ACT (FACT) providers in November 2017. Formal written reports of the reviews have been drafted to provide each of the four community treatment teams a better sense of their strengths and opportunities for improvement. The fidelity reviews will inform the Institute's plans for technical assistance so that they can be tailored to the training needs of each individual team. An initial cohort of individuals released from jail were enrolled in ACT and FACT services in early December 2017. Institute staff are working with project partners to improve the referral process to ensure a "warm handoff" to treatment and support services.

Partner agencies continue to be engaged in various components of the project such as housing needs and availability, processes for cross-agency collaboration, and continuous quality improvement activities. Institute staff are facilitating collaboration among the participating treatment agencies and the MDT's in Intercept 1. While the MDTs wait for City Council approval of the Parkland contract to provide clinicians, two of our treatment partners, Metrocare and Integrated Psychotherapeutic Services (IPS), have graciously provided clinicians to join in "ride-alongs" with DPD. Their joint work will create a learning opportunity before the Parkland clinicians come on board. The Institute will gain feedback about the "ride-alongs" from the DPD officers and communicate any service gaps to the new clinicians from Parkland. This opportunity will also inform IPS of the role clinicians play in Intercept 1. Since IPS has agreed to

provide clinicians as needed to support occasional MDT staff shortages, these “substitute” IPS clinicians may build off their prior experience working with MDT staff.

SMART JUSTICE GRANT - MENTAL HEALTH PR BOND PRETRIAL AND MAGISTRATE COURT ACTIVITIES SUMMARY

Col A	Col B	Col C	Col D	Col E	Col F	Col G	Col H	Col I	Col J	Col K	Col L	Col M	Col N	Col O	Col P	Col Q	Col R	Col S	Col T	Col U	Col V
Mon./Yr.	MH Screen/ID/Order Actions			Pretrial/Magistrate Release Steps and Actions								Pretrial Case/Supervision Actions & Outcomes						Pretrial Risk Scores/Levels ⁶			
Month	Book-ins ¹	ID-possible MH	⁸ MHPR Eligible-Assess Ordered	Not presented to Mag. ²	Presented to Mag.	Fel Chg. ³	Misd chg. ³	Granted	Denied	Rel. by other means	Total releases via Special Processes	PT Cases Opened ⁴	Level 1 Supv	Level 2 Supv	Level 3 Supv	Total Cases Closed ⁵	Successful - Closed of Total	Unsuccessful - Closed of Total	ORAS- Low [0-2]	ORAS - Mod. [3-5]	ORAS - High [6-9]
Apr 17-30	2546	489	109	93	16	13	5	15	1	0	11	15	3	7	5	1	0	1	1	18	9
May '17	5893	1090	213	179	34	17	27	29	2	3	19	29	5	14	10	1	0	1	11	37	20
June'17	5537	874	166	127	39	14	32	31	2	6	17	31	4	23	4	8	3	5	8	43	20
July '17	5615	1148	138	92	46	28	35	38	5	3	48	38	3	26	9	20	13	7	10	38	17
Aug '17	5784	1698	222	138	84	50	55	72	12	0	41	72	12	43	17	20	5	15	30	77	31
Sep '17	5449	1438	188	121	67	45	43	62	5	0	30	62	10	33	19	17	10	7	25	54	19
Oct '17	5472	1526	193	129	64	40	46	61	3	0	34	61	10	37	14	37	12	25	15	56	21
Nov '17	5203	1347	192	142	50	30	33	46	4	0	25	46	3	30	13	26	11	15	7	60	24
Dec '17	5368	1185	148	100	48	40	20	46	2	0	27	46	7	23	16	21	8	13	21	40	25
TOTAL	46867	10795	1569	1121	448	277	296	400	36	12	252	400	57	236	107	151	62	89	128	423	186

Percentages of Specific Relevant Columns Within Table Above																					
Mon./Yr.	MH Screen/ID/Order Actions		Pretrial/Magistrate Release Steps and Actions								Pretrial Case/Supervision Actions & Outcomes						Pretrial Risk Scores/Levels ⁶				
MONTHS		% possible MH (of bookings)	% ordered assessed (of MH ID list) ⁸	% not presented to Mag. (of eligible)	% presented to Mag. (of eligible)	% fel chg (of col. F)	% misd chg (of col. F)	% granted bond (col. I/F)	% denied bond (col. J/F)	% rel.- other means (col. K/F)	% of MH-ID released via spec. processes (col. L/C)	% opened (of granted)	% Lvl 1 Supv	% Lvl 2 Supv	% Lvl 3 Supv		Successful% Closed of Total (col. Q)	Unsuccessful % Closed of Total (col. Q)	% ORAS Low [0-2]	% ORAS Mod [3-5]	% ORAS High [6-9]
	APR '17	19.2%	22.3%	85.3%	14.7%	81.3%	31.3%	93.8%	6.3%	0.0%	10.1%	100.0%	20.0%	46.7%	33.3%		0.0%	100.0%	3.6%	64.3%	32.1%
	MAY '17	18.5%	19.5%	84.0%	16.0%	50.0%	79.4%	85.3%	5.9%	8.8%	8.9%	100.0%	17.2%	48.3%	34.5%		0.0%	100.0%	16.2%	54.4%	29.4%
	JUN '17	15.8%	19.0%	76.5%	23.5%	35.9%	82.1%	79.5%	5.1%	15.4%	10.2%	100.0%	12.9%	74.2%	12.9%		37.5%	62.5%	11.3%	60.6%	28.2%
	JUL '17	20.4%	12.0%	66.7%	33.3%	60.9%	76.1%	82.6%	10.9%	6.5%	34.8%	100.0%	7.9%	68.4%	23.7%		65.0%	35.0%	15.4%	58.5%	26.2%
	AUG '17	29.4%	13.1%	62.2%	37.8%	59.5%	65.5%	85.7%	14.3%	0.0%	18.5%	100.0%	16.7%	59.7%	23.6%		25.0%	75.0%	21.7%	55.8%	22.5%
	SEP '17	26.4%	13.1%	64.4%	35.6%	67.2%	64.2%	92.5%	7.5%	0.0%	16.0%	100.0%	16.1%	53.2%	30.6%		58.8%	41.2%	25.5%	55.1%	19.4%
	OCT '17	27.9%	12.6%	66.8%	33.2%	62.5%	71.9%	95.3%	4.7%	0.0%	17.6%	100.0%	16.4%	60.7%	23.0%		32.4%	67.6%	16.3%	60.9%	22.8%
	Nov '17	25.9%	14.3%	74.0%	26.0%	60.0%	66.0%	92.0%	8.0%	0.0%	13.0%	100.0%	6.5%	65.2%	28.3%		42.3%	57.7%	7.7%	65.9%	26.4%
	Dec '17	22.1%	12.5%	67.6%	32.4%	83.3%	41.7%	95.8%	4.2%	0.0%	18.2%	100.0%	15.2%	50.0%	34.8%		38.1%	61.9%	24.4%	46.5%	29.1%
AVG %	22.8%	15.4%	71.9%	28.1%	62.3%	64.2%	89.2%	7.4%	3.4%	16.4%	100.0%	14.3%	58.5%	27.2%		33.2%	66.8%	15.8%	58.0%	26.2%	

Contained here are the raw/percents of monthly and YTD Caruth Smart Justice Grant data covering April- December 2017 which reflects program and performance activity via 23 Pretrial/Court and 15 ACS/clinical data elements. We continue to make excellent progress on activities/outcomes/reporting, and to meet monthly and year-to-date Grant performance metrics with a Dec. 2017 monthly summary below.

Highlights: The CJ eligibility exclusion criteria for MHPR bonds was recently reduced per 2017 amendments to CCP 17.032, and will be reflected in future months. Additionally, the next 5 pretrial officers are being recruited, and indigence screening staff will soon be hired as well. The new homeless diversion court will soon begin, but BH housing options continue to be a limiting factor for MHPR bond releases.

December 2017 MHPR Bond Data Summary:

- 1185 were screened MH positive (100% of all book-ins were MH screened)
- 148 were found MHPR Bond eligible by PTS and ordered for assessment
- 121 were fully assessed (most with Rec's for Standard IOP and Routine OP)
- 33 were not fully assessed (see breakdown in sheet #3, table #3, columns B-F)
- 100 were disposed by other means prior to presentation to the Magistrate/Court (see notes, breakdown of reasons on worksheet #2 tables 1, 2 and 3)
- 48 were presented to the Court for bond decision
- 46 of those were granted bond and released (25 via "special release processes" (formerly called *special program holds*))
- 2 of the 48 were denied bond and detained
- 46 bond-released defendants (100%) were opened by PTS
- 46 releasees (100%) were connected/referred to follow up treatment by ACS and PTS
- 21 MHPR Bond cases were closed by PTS (8 successful/13 unsuccessful)

SMART JUSTICE GRANT - MENTAL HEALTH PR BOND PRETRIAL ACTIVITIES SUMMARY #2

Col A	Col B	Col C	Col D	Col E	Col F	Col G	Col H	Col I	Col J	Col K	Col L	Col M	Col N	Col O	Col P	Col Q	Col R	Col S
Months	BETA TESTING PERIOD - Reasons for outcomes for all ordered assessment/not presented to Mag. [from column E on sheet 1] ¹																	
	Attorney refusal	Case deferred	Charges dropped	Competency Concerns	Contested and detained	Court plea/disp	Current MH Bond	Declined assessment	Dry writ release	Exc. per CJ criteria	Homeless/no reference	Other	Other PR Bond	Posted Bond	Reference declined residence	Refused to participate	Unable to verify residence/contact	Total
APR '17	0	0	0	1	0	0	0	13	0	43	0	5	0	12	0	2	17	93
MAY '17	2	0	0	8	0	0	1	26	0	29	0	24	0	25	0	14	32	161
JUNE '17	0	1	0	8	0	0	0	14	0	16	0	27	0	17	0	11	42	136
JULY '17	0	0	0	6	1	0	0	16	0	2	1	17	0	14	1	13	27	98
TOTAL	2	1	0	23	1	0	1	69	0	90	1	73	0	68	1	40	118	488

Months	SINCE IMPLEMENTATION - Reasons for outcomes for all ordered assessment/not presented to Mag. [from column E on sheet 1] ²																	
	Attorney refusal	Case deferred	Charges dropped	Competency Concerns	Contested and detained	Court plea/disp	Current MH Bond	Declined assessment	Dry writ release	Exc. per CJ criteria	Homeless/no reference	Other	Other PR Bond	Posted Bond	Reference declined residence	Refused to participate	Unable to verify residence/contact	Total
AUG '17	0	0	0	4	0	0	0	24	0	13	0	25	0	32	0	9	34	141
SEP '17	0	0	0	11	0	0	0	22	0	5	0	10	0	24	0	10	44	126
OCT '17	0	0	5	4	0	1	0	16	1	15	15	5	3	34	5	9	11	124
NOV '17	0	0	5	5	0	4	0	21	0	13	19	0	2	39	14	6	10	138
DEC '17	0	0	1	5	0	4	0	11	0	2	15	0	4	24	8	6	16	96
TOTAL	0	0	11	29	0	9	0	94	1	48	49	40	9	153	27	40	115	625

Months	SINCE IMPLEMENTATION - Percentages of Reasons for outcomes for all ordered assessment/not presented to Mag. [from column E on sheet 1]																	
	Attorney refusal	Case deferred	Chrages dropped	Competency Concerns	Contested and detained	Court plea/disp	Current MH Bond	Declined assessment	Dry writ release	Exc. per CJ criteria	Homeless/no reference	Other	Other PR Bond	Posted Bond	Reference declined residence	Refused to participate	Unable to verify residence/contact	
AUG '17	0%	0%	0%	3%	0%	0%	0%	17%	0%	9%	0%	18%	0%	23%	0%	6%	24%	
SEP '17	0%	0%	0%	9%	0%	0%	0%	17%	0%	4%	0%	8%	0%	19%	0%	8%	35%	
OCT '17	0%	0%	4%	3%	0%	1%	0%	13%	1%	12%	12%	4%	2%	27%	4%	7%	9%	
NOV '17	0%	0%	4%	4%	0%	3%	0%	15%	0%	9%	14%	0%	1%	28%	10%	4%	7%	
DEC '17	0%	0%	1%	5%	0%	4%	0%	11%	0%	2%	16%	0%	4%	25%	8%	6%	17%	
AVG %	0%	0%	2%	5%	0%	2%	0%	15%	0%	7%	8%	6%	2%	24%	5%	6%	18%	

SMART JUSTICE GRANT - ADAPT RESULTS/RECOMMENDATIONS FROM MH ASSESSMENTS

Col A	Col B	Col C	Col D	Col E	Col F	Col G	Col H	Col I	Col J	Col K	Col L	Col M	Col N	Col O	Col P
Months	Assessments Ordered - Results				Assessment Recommendations (LOCs) ³										Outcomes
APRIL-JUNE 2017	Assessments Ordered	Assessment Completed	Assessment not completed ¹	Assessment halted - competency concerns ²	Urgent Care Clinic	IDD Services	Residential Services	Jail-based Psy. Services	Standard Intensive Outpt ⁴	FACT	ACT	FDU	Routine Outpt.	No BH Svs. Indicated	MHPR released & connected to services
	488	297	191	0	0	1	4	13	83	21	28	8	116	21	75
JULY '17	138	101	37	0	1	0	1	7	35	6	6	2	40	3	38
AUG '17	222	165	57	5	0	0	0	0	41	1	3	1	105	12	72
SEP '17	188	143	36	10	0	2	0	14	45	1	4	4	67	5	62
OCT '17	192	134	52	6	0	2	0	9	49	0	4	1	59	4	61
NOV '17	180	121	53	6	0	1	0	9	34	2	6	2	61	3	46
DEC '17	153	121	29	4	0	1	0	7	41	1	2	1	59	6	46
TOTAL	1561	1082	455	31	1	7	5	59	328	32	53	19	507	54	400

Months	Percentages of Certain Relevant Columns Within Table Above														
	% of Assessments Ordered - Results				% of TOTAL Assessment Recommendations (LOCs)										% Connected
APRIL-JUNE 2017	% Assessments Ordered of MH ID (from Col. C, tab #1)	% of Assessments Completed (Col. C/B)	% Assessments not completed (Col. D/C)	Assessment halted - competency concerns	Urgent Care Clinic	IDD Services	Residential Services	Jail-based Psy. Services	Standard Intensive Outpt ⁴	FACT	ACT	FDU	Routine Outpt.	No BH Svs. Indicated	MHPR releasees connected to services
	19.9%	60.9%	39.1%	0.0%	0.0%	0.3%	1.4%	4.4%	28.1%	7.1%	9.5%	2.7%	39.3%	7.1%	100.0%
JULY '17	12.0%	73.2%	26.8%	0.0%	1.0%	0.0%	1.0%	6.9%	34.7%	5.9%	5.9%	2.0%	39.6%	3.0%	100.0%
AUG '17	13.1%	74.3%	25.7%	3.0%	0.0%	0.0%	0.0%	0.0%	24.4%	0.6%	1.8%	0.6%	62.5%	7.1%	100.0%
SEP '17	13.1%	76.1%	19.1%	6.6%	0.0%	1.3%	0.0%	9.2%	29.6%	0.7%	2.6%	2.6%	44.1%	3.3%	100.0%
OCT '17	12.6%	69.8%	27.1%	4.5%	0.0%	1.5%	0.0%	6.7%	36.6%	0.0%	3.0%	0.7%	44.0%	3.0%	100.0%
NOV '17	13.4%	67.2%	29.4%	4.8%	0.0%	0.8%	0.0%	7.3%	27.4%	1.6%	4.8%	1.6%	49.2%	2.4%	100.0%
DEC '17	12.9%	79.1%	19.0%	3.3%	0.0%	0.8%	0.0%	5.7%	33.6%	0.8%	1.6%	0.8%	48.4%	4.9%	100.0%
AVG %	13.8%	71.5%	26.6%	3.2%	0.1%	0.7%	0.3%	5.8%	30.6%	2.4%	4.2%	1.6%	46.7%	4.4%	100.0%

Months	Reasons for and Percentage of Assessments Not Completed (Col. D)						
	Client declined	Valid assessment on file	Released before assessment	Refused to present	Competency concerns	TOTAL	% not assessed
AUG '17	31	12	12	2	5	62	27.9%
SEP '17	18	10	6	2	10	46	24.5%
OCT '17	14	11	22	5	6	58	30.2%
NOV '17	20	14	16	3	6	59	32.8%
DEC '17	8	8	9	4	4	33	21.6%
TOTAL	91	55	65	16	31	258	27.4%

	Oct.	Nov.	Dec.	Jan.	Feb.	Mar.	Apr.	May	June	July	Aug.	Sep.	FY2018 Total	FY2017 Total	FY2016 Total
Number of New Admissions	4	2	7	2									15	44	33
Number of Successful Completions	3	0	1	3									7	36	24
Number of Unsuccessful Completions	0	0	0	3									3	10	9
Average Days in Jail from Referral to Admission	12	9	6	5									8	7	4
Number of New Admissions on ELM	2	2	3	2									9	37	12
Program Referral Follow-Ups by Type (running total per grant year)															
Court Program Graduate													0	0	6
Active In Court Program													8	7	3
Active In Treatment at Nexus													5	0	0
In Jail													0	0	0
Re-Arrested and Released to Community													0	15	12
Re-Arrested and Released to Further Treatment													0	8	2
Released to TDCJ or State Jail													0	5	5
Active Warrant													1	8	4



Behavioral Health Steering Committee

530 Fund Sub-Committee

Attendees

Laura Edmonds, Shenna Oriabure, Keta Dickerson, Ruth Kaiser, Judge Kristin Wade, Serena McNair, Julie Turnbull, Bryan Smith, Leah Gamble, Judge Lela Mays Vickie Rice, Dr. Love, Lynn Richardson, Sheria West, Judge Nancy Kennedy

Review/Approval of Minutes

Leah Gamble called the meeting to order at 9:32am and asked for a motion to approve the minutes. Ruth Kaiser made a motion to approve the minutes. Laura Edmonds seconded the motion and the minutes were accepted by the group.

530 Fund Balance and Update

An update of the 530 Fund Balance was not provided. The report was forgone to check for accuracy. Keta is working with the Auditor's Office and will email the financial report when available.

Request for Funding

Veterans Court submitted a request for funding. The request was received on 12/6/17. The request was for 60, \$10 Walmart gift cards, totaling \$600 utilizing the incentives line item for FY 18. Judge Wade moved to approve the request. Keta Dickerson seconded the motion. The motion was approved by the group.

2018 NADCP Planning

NADCP hotel information is available on the conference website. Those who have a state stipend do have a room reserved but must pay the invoice and be reimbursed later. State stipends only have lodging reserved for Wednesday through Saturday. Keta Dickerson opened the discussion on allocation of award for the conference utilizing 530 funding. Keta recommended the fund only pay the member rate registration fee (\$685) and not the non-member rate of (\$745). Each 530 stipend recipient then would be required to pay a \$50 membership fee out of pocket. Judge Wade moved a motion that to access the 530 funding, the recipient, must have a NADCP membership. Judge Mays seconded the motion. The motion was approved by the group. Dr. Love advised a timeline for the 530 stipend be set up. Keta further suggested the 530 fund only pay for registration, lodging, and parking. Shenna Oriabure advised the training budget allows for each of the 14 certified specialty courts to receive (1) 530 stipend. The total line items of \$26,500 can fund 19 individuals at \$1375. The 530 fund sent 17 individuals to TASC in 2017.

530 Sub Committee

Minutes from January 10, 2018

Page 1 of 2

Judge Wade still emphasized the benefits of approaching Commissioners Court about funding for the conference. Dr. Love expressed the need for communication with all specialty courts regarding the NADCP conference and 530 funding. Dr. Love stated the courts and departments need transparency for better planning. There was a robust discussion regarding award allocation. Judge Mays recommended the funds be maximized by room sharing and other cost saving options. Judge Wade moved a motion to cap the 530 stipend at \$1,375 and (1) stipend per court. Vickie Rice seconded the motion. The motion carried. Keta set the deadline to apply for the 530 stipend as February 2, 2018 so to meet submission deadlines for Commissioners Court briefings. Leah Gamble requested Serena McNair and Shenna follow-up with specialty court judges to see which staff personnel will be applying for the 530 stipend. Vickie suggested when choosing those for the 530 stipend to be mindful of the financial burden and waive those individuals who express inability to attend due to finances. There will be some personal financial cost to attend the conference under the 530 stipend. Judge Kennedy recommended attendees look into the MegaBus as a transportation option. Judge Kennedy will mention all this information at the District Court Judges Meeting scheduled for 1/11/18. Judge Mays requested STAC be given (2) 530 stipends due to the size of the court and staff. The group agreed to provide (2) 530 stipends each to STAC and 4-C due to court capacity and large staff.

Texas State Office of the Governor Update

Keta Dickerson advised Office of the Governor CJD grant applications are due February 20, 2018. Keta advised there is now a new Interim Executive Director. Keta advised specialty courts must be in compliance with best practices by 2019 or face consequences affecting funding. Keta recommended all specialty courts dive into best practices. 2019 will require specialty courts have more accountability. Serena McNair spoke regarding SOPs. Vickie Rice suggested a briefing of the top 10 things courts need to become compliant with best practices. Judge Mays advised there was previous discussion about having a specialty court meeting and inviting all the specialty court judges. Judge Mays requested 530 offer and facilitate a specialty court judges' meeting.

Announcements

Shenna Oriabure reminded the group of specialty drug testing funded by 530. Shenna advised utilization was low in the months of November and December 2017.

Adjourn

The meeting was adjourned at 10:35 am and will reconvene on 3/14/18 @9:30am.



Crisis Services Project

CSP Total

DY7 CSP Monthly Report_No Graphs

Last Refresh: 1/8/18 at 7:50:25 PM GMT-06:00

	Past Year Avg	2017-10	2017-11	2017-12	Average:	Sum:
Total Service Episodes:	808	840	721	612	724.33	2,173
Total Unique CID:	630	829	668	545	680.67	2,042
Total Unique SID:		829	665	534	676	2,028
% Change to DY 4 by CID		131.59%	106.03%	86.51%		

Total Encounters by Type:		2017-10	2017-11	2017-12	Average:	Sum:
Triage		840	721	612	724.33	2,173
Care Coordination		2,660	2,297	2,309	2,422	7,266
F2F Encounter		397	372	311	360	1,080
Sum:		3,897	3,390	3,232	3,506.33	10,519

F2F Encounter		2017-10	2017-11	2017-12	Average:	Sum:
MHPR Bond		190	177	138	168.33	505
Non-MHPR		207	195	173	191.67	575
Sum:		397	372	311	360	1,080



Crisis Services Project

Frank Crowley

DY7 CSP Monthly Report_No Graphs

Last Refresh: 1/8/18 at 7:50:25 PM GMT-06:00

	2017-10	2017-11	2017-12	Average:	Sum:
<u>Service Episodes:</u>	840	721	612	724.33	2,173

<u>Unique Consumers:</u>	2017-10	2017-11	2017-12	Average:	Sum:
By N* ID	444	367	327	379.33	1,138
By Client ID	385	301	218	301.33	904
TOTAL Unique Consumers:	829	668	545	680.67	2,042
TOTAL Unique Consumers as %:	98.69%	92.65%	89.05%		

<u>Unique F2F:</u>	2017-10	2017-11	2017-12	Average:	Sum:
By N* ID	174	144	144	154	462
By Client ID	169	171	106	148.67	446
TOTAL Unique F2F:	343	315	250	227	908
TOTAL Unique F2F as %:	86.40%	84.68%	80.39%		

	2017-10	2017-11	2017-12	Average:	Sum:
F2F Percentages:	47.26%	51.60%	50.82%	49.89%	149.67%



Crisis Services Project

Frank Crowley

DY7 CSP Monthly Report_No Graphs

Last Refresh: 1/8/18 at 7:50:25 PM GMT-06:00

<u>Encounters by Type:</u>	2017-10	2017-11	2017-12	Average:	Sum:
Triage	840	721	612	724.33	2,173
Care Coordination	2,660	2,297	2,309	2,422	7,266
F2F Encounter	397	372	311	360	1,080
TOTAL Encounters:	3,897	3,390	3,232	3,506.33	10,519

<u>Female:</u>	2017-10	2017-11	2017-12	Average:	Sum:
Black	103	80	77	86.67	260
Hispanic	32	23	17	24	72
Other	1		1	1	2
Unknown	3	2	4	3	9
White	61	59	51	57	171
TOTAL Female:	200	164	150	171.33	514

<u>Male:</u>	2017-10	2017-11	2017-12	Average:	Sum:
Black	286	261	234	260.33	781
Hispanic	81	53	58	64	192
Other	3	2	1	2	6
Unknown	15	9	4	9.33	28
White	106	114	98	106	318
TOTAL Male:	491	439	395	441.67	1,325

Triage 12	2,026
Recidivism 12-12	174
Recidivism 12-12%	8.59%

Triage 6	2,026
Recidivism 6-6	174
Recidivism 6-6%	8.59%

Triage 6	2,026
Recidivism 6-12	174
Recidivism 6-12%	8.59%

	October	November	December
Year MO	2017/10	2017/11	2017/12
Recidivism 12-12	13	89	174
Triage 12	829	1,494	2,027
Recidivism 12-12%	1.57%	5.96%	8.58%

	October	November	December
Year MO	2017/10	2017/11	2017/12
Recidivism 6-6	13	89	174
Triage 6	829	1,494	2,027
Recidivism 6-6%	1.57%	5.96%	8.58%

	October	November	December
Year MO	2017/10	2017/11	2017/12
Recidivism 6-12	13	89	174
Triage 6	829	1,494	2,027
Recidivism 6-12%	1.57%	5.96%	8.58%



Crisis Services Project

CSP Total

DY7 CSP Monthly Report_No Graphs

Last Refresh: 2/27/18 at 12:29:21 PM GMT-06:00

	Past Year Avg	2017-10	2017-11	2017-12	2018-01	Average:	Sum:
Total Service Episodes:	808	840	721	612	680	713.25	2,853
Total Unique CID:	630	829	668	545	595	659.25	2,637
Total Unique SID:		829	667	544	591	657.75	2,631
% Change to DY 4 by CID		131.59%	106.03%	86.51%	94.44%		

Total Encounters by Type:		2017-10	2017-11	2017-12	2018-01	Average:	Sum:
Triage		840	721	612	680	713.25	2,853
Care Coordination		2,660	2,297	2,309	2,608	2,468.5	9,874
F2F Encounter		397	372	327	345	360.25	1,441
Sum:		3,897	3,390	3,248	3,633	3,542	14,168

F2F Encounter		2017-10	2017-11	2017-12	2018-01	Average:	Sum:
MHPR Bond		191	181	154	165	172.75	691
Non-MHPR		206	191	173	180	187.5	750
Sum:		397	372	327	345	360.25	1,441



Crisis Services Project

Frank Crowley

DY7 CSP Monthly Report_No Graphs

Last Refresh: 2/27/18 at 12:29:21 PM GMT-06:00

	2017-10	2017-11	2017-12	2018-01	Average:	Sum:
Service Episodes:	840	721	612	680	713.25	2,853

	2017-10	2017-11	2017-12	2018-01	Average:	Sum:
Unique Consumers:						
By N* ID	444	368	327	358	374.25	1,497
By Client ID	385	300	218	237	285	1,140
TOTAL Unique Consumers:	829	668	545	595	659.25	2,637
TOTAL Unique Consumers as %:	98.69%	92.65%	89.05%	87.50%		

	2017-10	2017-11	2017-12	2018-01	Average:	Sum:
Unique F2F:						
By N* ID	174	144	151	151	155	620
By Client ID	169	171	115	130	146.25	585
TOTAL Unique F2F:	343	315	266	281	241	1,205
TOTAL Unique F2F as %:	86.40%	84.68%	81.35%	81.45%		

	2017-10	2017-11	2017-12	2018-01	Average:	Sum:
F2F Percentages:	47.26%	51.60%	53.43%	50.74%	50.76%	203.02%



Crisis Services Project

Frank Crowley

DY7 CSP Monthly Report_No Graphs

Last Refresh: 2/27/18 at 12:29:21 PM GMT-06:00

Encounters by Type:	2017-10	2017-11	2017-12	2018-01	Average:	Sum:
Triage	840	721	612	680	713.25	2,853
Care Coordination	2,660	2,297	2,309	2,608	2,468.5	9,874
F2F Encounter	397	372	327	345	360.25	1,441
TOTAL Encounters:	3,897	3,390	3,248	3,633	3,542	14,168

Female:	2017-10	2017-11	2017-12	2018-01	Average:	Sum:
Black	119	94	77	88	94.5	378
Hispanic	36	25	17	31	27.25	109
Other	2		1		1.5	3
Unknown	4	2	4	3	3.25	13
White	73	61	51	51	59	236
TOTAL Female:	234	182	150	173	184.75	739

Male:	2017-10	2017-11	2017-12	2018-01	Average:	Sum:
Black	353	289	234	251	281.75	1,127
Hispanic	99	61	58	63	70.25	281
Other	3	2	1	2	2	8
Unknown	16	9	4	6	8.75	35
White	124	124	98	99	111.25	445
TOTAL Male:	595	485	395	421	474	1,896

Triage 12	2,628
Recidivism 12-12	277
Recidivism 12-12%	10.54%

Triage 6	2,628
Recidivism 6-6	277
Recidivism 6-6%	10.54%

Triage 6	2,628
Recidivism 6-12	277
Recidivism 6-12%	10.54%

	October	November	December	January
Year MO	2017/10	2017/11	2017/12	2018/01
Recidivism 12-12	13	89	174	277
Triage 12	829	1,496	2,039	2,629
Recidivism 12-12%	1.57%	5.95%	8.53%	10.54%

	October	November	December	January
Year MO	2017/10	2017/11	2017/12	2018/01
Recidivism 6-6	13	89	174	277
Triage 6	829	1,496	2,039	2,629
Recidivism 6-6%	1.57%	5.95%	8.53%	10.54%

	October	November	December	January
Year MO	2017/10	2017/11	2017/12	2018/01
Recidivism 6-12	13	89	174	277
Triage 6	829	1,496	2,039	2,629
Recidivism 6-12%	1.57%	5.95%	8.53%	10.54%

Forensic Diversion Unit (FDU) Report

	Jan-17	Feb-17	Mar-17	Apr-17	May-17	Jun-17	Jul-17	Aug-17	Sep-17	Oct-17	Nov-17	Dec - 17
Beginning Census	47	46	50	45	44	47	50	47	50	47	47	46
Number of Referrals Received from CSP												
Adapt	7	8	16	12	20	17	8	15	10	16	6	13
Metrocare	0	0										
Transicare	0	0										
DA	0	0										
Number of Admissions	5	8	10	7	9	8	6	7	6	11	1	9
Number Discharged	0	4	10	3	6	5	9	3	6	10	1	5
Number not admitted due to:												
Client qualifies for ACT	0	0	0	2		4		1		0		
Client qualifies for other programs	1	0	0							1		
Client didn't meet level of need required	0	0	0				1	2	1	1	4	
Other reasons	0	0	0	3	7	5	1	5	3	3	1	4
Average Service Utilization:												
Average hours seen	7.22	6.46	6.36	6.52	6.72	5.19	6.18	10.32	10.48	11.63	10.63	10.4
Encounter Breakdown:												
Face to Face	254	275.25	245	264.25	269	240.28	298.75	324.54	258.16	259.83	286	265.27
Service Coordination	193	225	215	188	296	210.25	239	181.75	437	628	602	537
Number of clients accessing:												
Emergency Room (medical)	0	0	0		0	0	0	0	1	0	0	
23-hour observation (psych)	1	1	0	1								1
Inpatient (med/ psych)	0	0	0		2	2	1	1	1	0	0	1
Jail book-in	10	2	0	1	5	5	2	5	2	0	0	1
Reasons for Discharge:												
Graduate		0	0		1	1	0	1	1	0	0	
Client Disengagement	2	3	0	3	3	1	7	2	3	5	0	
Extended Jail stay (case-by-case basis)		0	0		1					5	0	
Other Intervening factors		1	0	2	1	1	2	1	5	1	1	5
End of Month Stats:												
Number of Active FDU clients end of month	46	50	48	44	47	50	47	50	47	47	46	42
Number of Unique Consumers	2	0	2	0	47	50	47	50	47	47	46	50
# of clients waiting to be released from jail	11	12	15	12	14	9	8	6	9	15	8	8
Average Length of stay on FDU (month)	12.27	11.38	7.72	8.06	6.33	5.54	5.63	5.99	7.01	6.57	6.74	6.82
Maximum Census	46	46	46	46	46	46	46	46	46	46	46	46

Forensic Diversion Unit (FDU) Report

	Jan-18	Feb-18	Mar-18	Apr-18	May-18	Jun-18	Jul-18	Aug-18	Sep-18	Oct-18	Nov-18	Dec - 18
Beginning Census	42											
Number of Referrals Received from CSP												
Adapt	7											
Metrocare	0											
Transicare	0											
DA	1											
Number of Admissions	8											
Number Discharged	3											
Number not admitted due to:												
Client qualifies for ACT	0											
Client qualifies for other programs	0											
Client didn't meet level of need required	0											
Other reasons	0											
Average Service Utilization:												
Average hours seen	9.03											
Encounter Breakdown:												
Face to Face	269											
Service Coordination	676											
Number of clients accessing:												
Emergency Room (medical)	2											
23-hour observation (psych)												
Inpatient (med/ psych)	3											
Jail book-in	0											
Reasons for Discharge:												
Graduate												
Client Disengagement												
Extended Jail stay (case-by-case basis)	3											
Other Intervening factors												
End of Month Stats:												
Number of Active FDU clients end of month	47											
Number of Unique Consumers	47											
# of clients waiting to be released from jail	9											
Average Length of stay on FDU (month)	6.67											
Maximum Census	46											

the consumers on the "waiting" list are being actively seen in jail until release

Transicare Reporting

January 2018 Referrals

	2018-01				2018-01 Total	Grand Total
Referral Status	FACT1.0	FACT2.0	PATS1.0	Unassigned		
Admitted	16	3	1		20	20
No Admit Criteria				1	1	1
No Admit Structural				5	5	5
Pending				19	19	19
Grand Total	16	3	1	25	45	45

Prior Pending

Pending Status	2018-01	Grand Total
Admitted	20	20
No Admit Client Refusal	3	3
No Admit Criteria	3	3
No Admit Structural	5	5
Ongoing Pending	15	15
Grand Total	46	46

Discharges

	2018-01					2018-01 Total	Grand Total
Discharge Status	FACT1.0	FACT1.1	FACT2.0	PATS1.0	Unassigned		
Successful	1		1	1		3	3
Mid-Term Disengaged After Admission							
	8	1	2	4		15	15
Structural Barriers After Admission			4			15	15
<30 Days Disengaged After Admission							
	12		7	1		20	20
Structural Barriers Before Admission				4	6	10	10
No Criteria for Admission				3	1	4	4
Client Refusal	1			2		3	3
Grand Total	33	1	14	15	7	70	70

Active Cases

Case Status	FACT1.0	FACT1.1	FACT2.0	PATS1.0	Unassigned	Grand Total
Active	50	6	27	25	2	110
Engaged					21	21
Pending					9	9
Grand Total	50	6	27	25	32	140

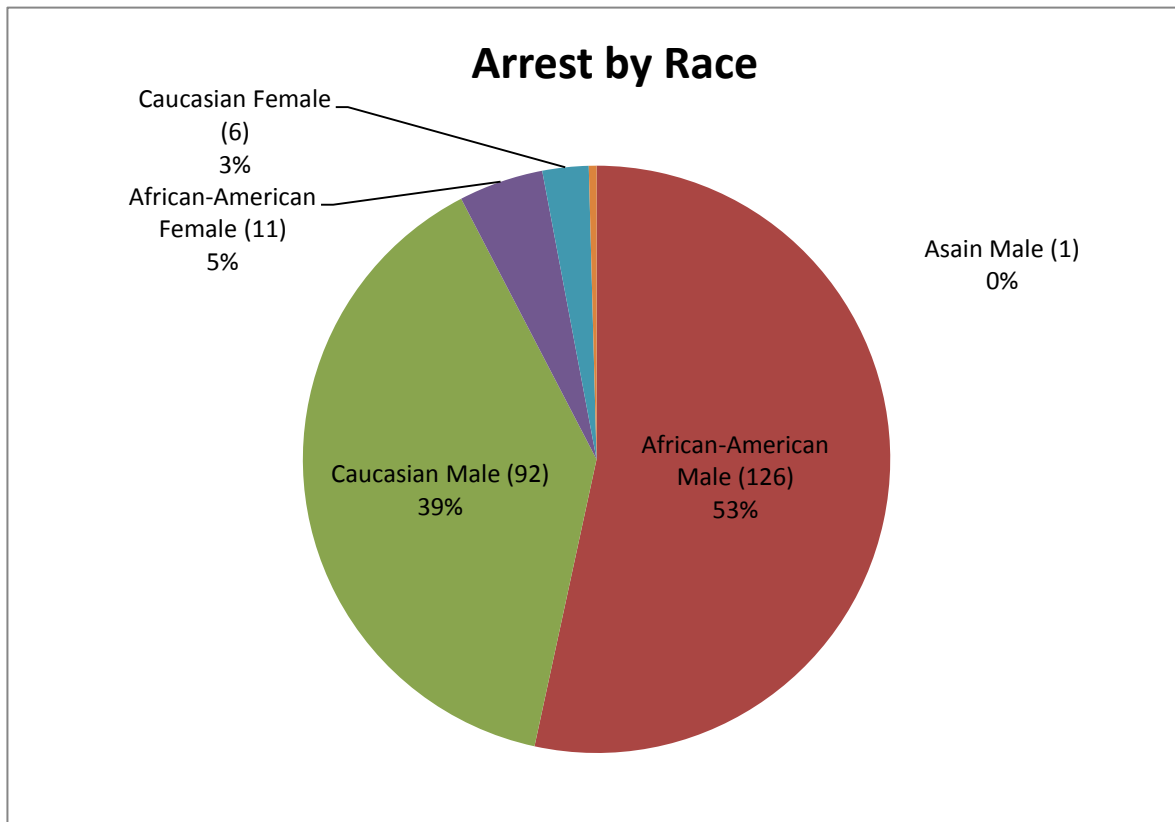
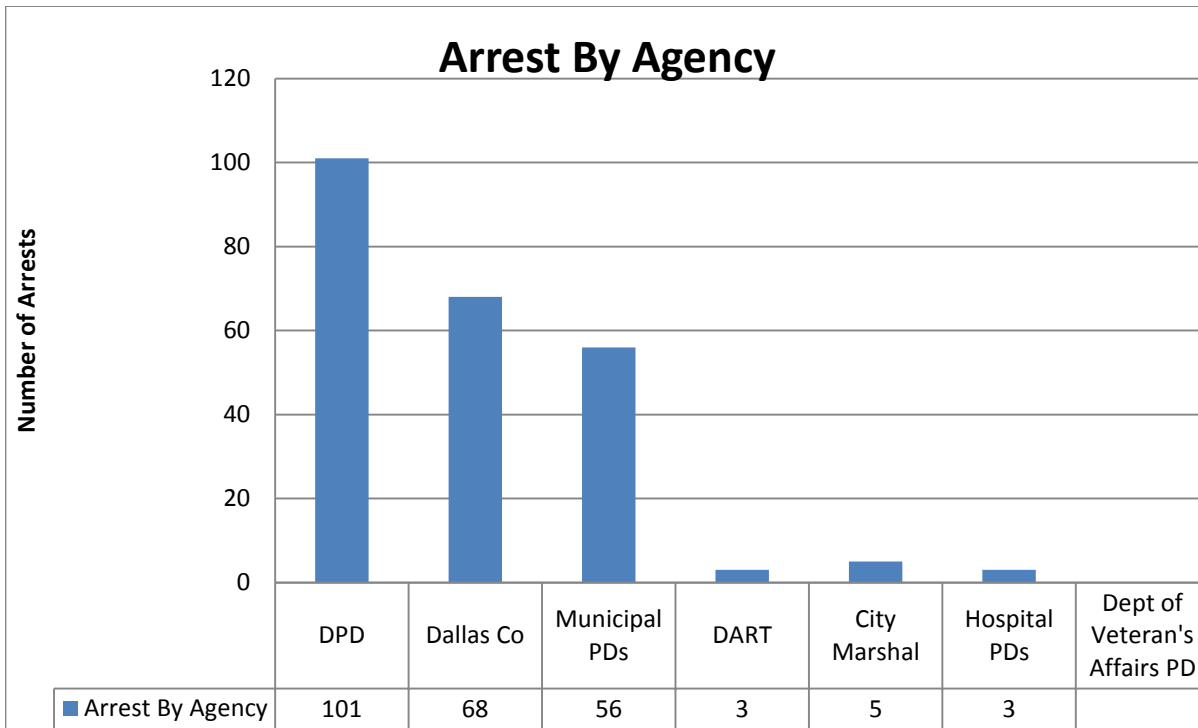
Terrell Releases

	2018-01		2018-01 Total	Grand Total
Row Labels	FACT1.0	PATS1.0		
Terrell State Hospital Metric	1	12	13	13
≤7 Day Connection Rate	1	12	13	13
Grand Total	1	12	13	13

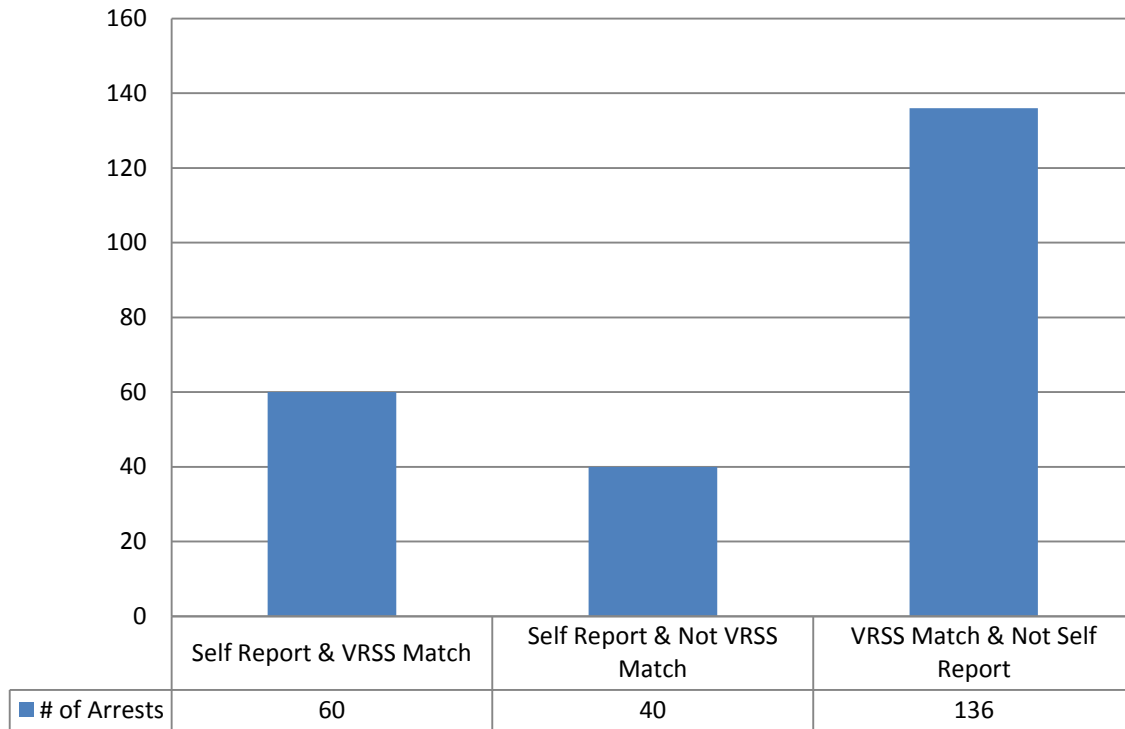
Transicare Reporting

	Oct-17	Nov-17	Dec-17	Totals
Beginning Census	152	149	134	435
REFERRALS				
Referred Admitted	33	23	18	74
No Admit Client Refusal	0	1	0	1
No Admit Criteria	5	2	1	8
No Admit Structural	3	2	3	8
Pending	31	33	15	79
PRIOR PENDING				
Pending Admitted	16	5	11	32
No Admit Client Refusal	1	3	0	4
No Admit Criteria	1	4	0	5
No Admit Structural	17	1	11	29
Total Admissions	49	28	29	106
Discharges				
Success Transfer	7	6	5	18
DC Midterm Disengage	19	14	5	38
DC Rapid Disengage	14	14	2	30
DC Structural	12	9	4	25
Total Discharged	52	43	16	111
Active End Of Month	149	134	147	
TSH Outcome Data				
<i>Terrell State Hospital Linkages</i>				
≤7 Connect To Prescriber	4	2	1	7
≤30 Connect To Prescriber	0	0		0
Missed Metric	0	0		0
Total Released	4	2	1	7
Cummulative ≤7 Connect %	100%	100%	100%	100%
Cummulative ≤30 Connect %				
Missed Metric	0	0	0	0
Unduplicated Served				
Monthly Unduplicated	204	187	171	562

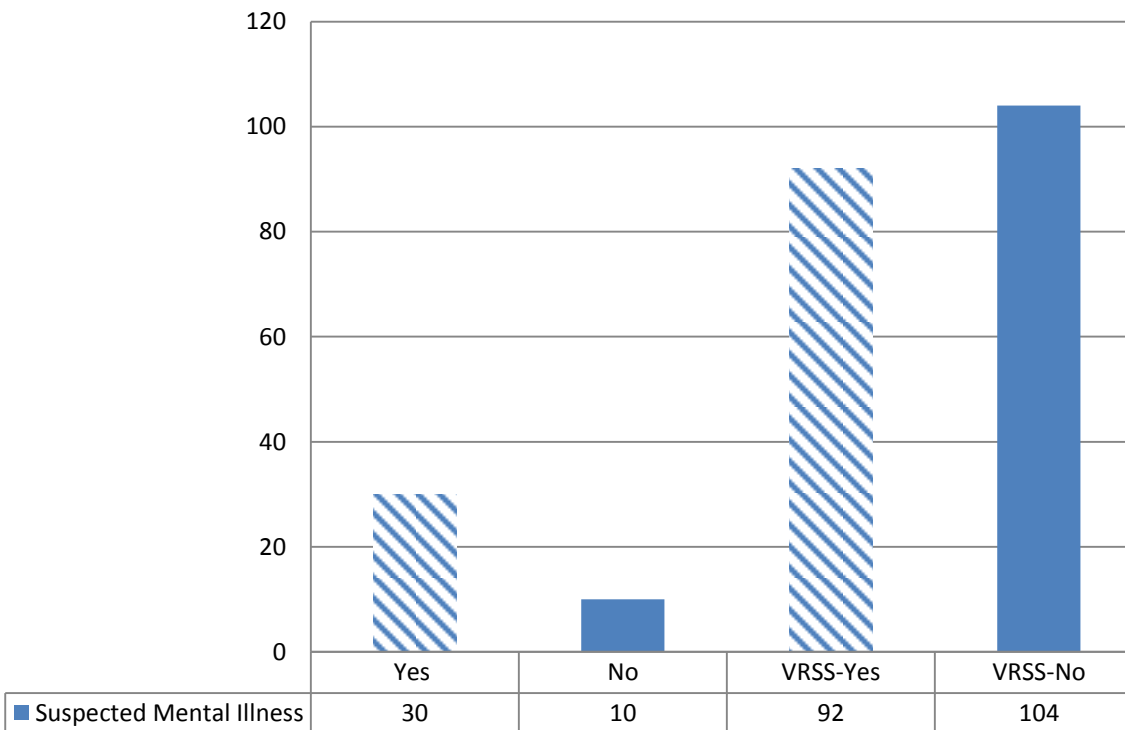
Jail Competency Stats 2018												
	Jan	Feb	March	April	May	June	July	Aug	Sept	Oct	Nov	Dec
Active												
New Evals - Incompetent	61	45										
Waiting for the hospital - End of month	132	133										
Maximum Secure Facility	72	69										
Non-Maximum Secure Facility	60	64										
Returned to jail from the hospital	22	36										
Closed												
New Evals - Competent	37	35										
Admitted to the state hospital	35	36										
Maximum Secure Facility	6	8										
Non-Maximum Secure Facility	29	28										
Total Competency Evaluations Completed	98	80										
Average Wait Times												
Non-Maximum Secure Hospital -- Males							84 days					
Non-Maximum Secure Hospital -- Females							< 15 days					
Maximum Secure Hospital: Article 17.032(a) charges -- Males							282 days					
Maximum Secure Hospital: Article 17.032(a) charges -- Females							107 days					
Maximum Secure Hospital: NGRI -- Males							NGRI cases will now take priority for admission to Vernon State Hospital. Expected admission time is < 21 days					
Maximum Secure Hospital: NGRI -- Females												
*Note: All individuals who are found Not Guilty by Reason of Insanity (NGRI) or found incompetent to stand trial with an offense listed in Article 17.032(a) of the Code of Criminal Procedure must be sent to the maximum-secure hospital in Vernon. All wait times are approximate.												



Reporting



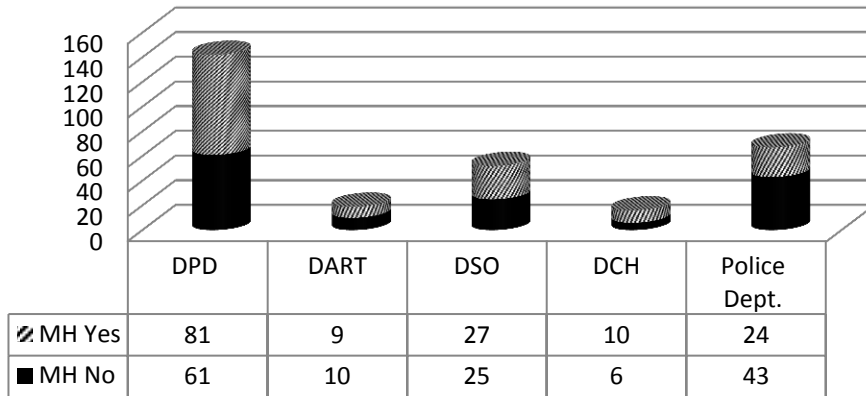
Suspected Mental Illness



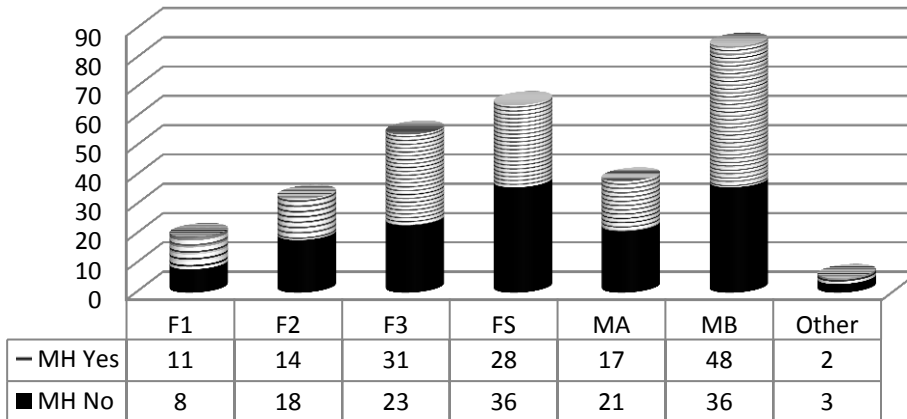
Unique Individuals
Days In Jail
Average Number of Days in Jail

2018
287
15,026
50.76

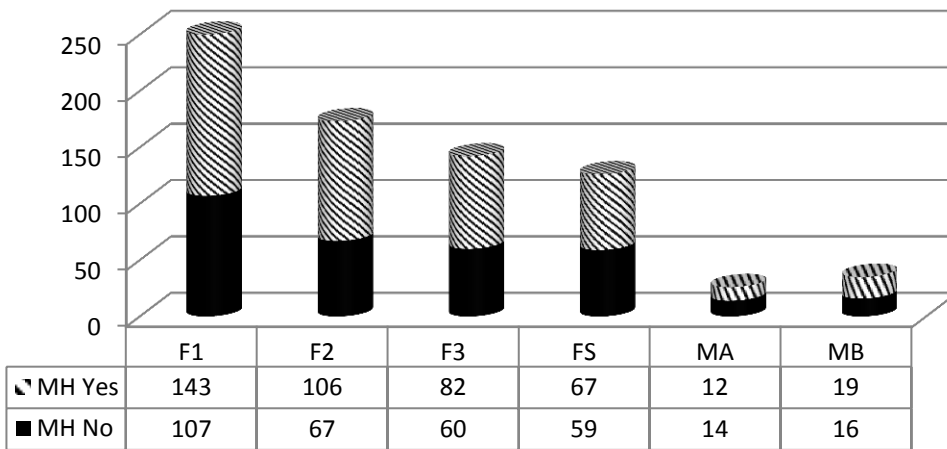
Arresting Agency



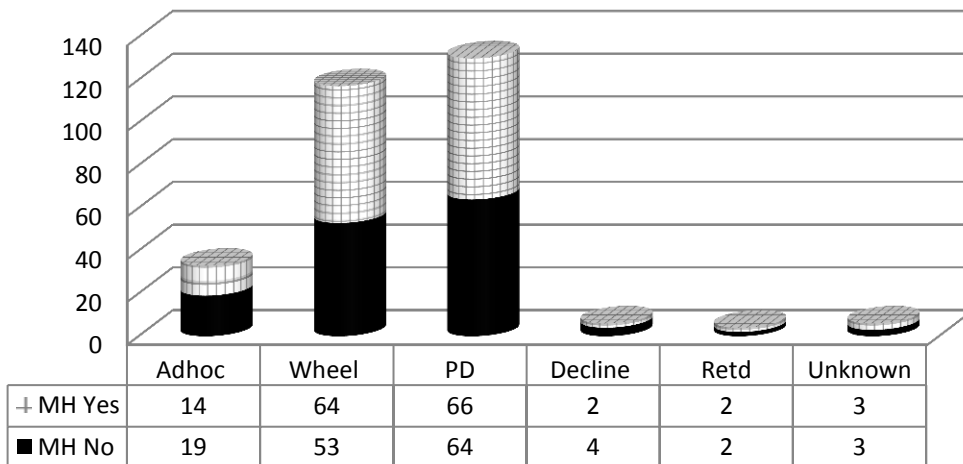
Degree of Offense



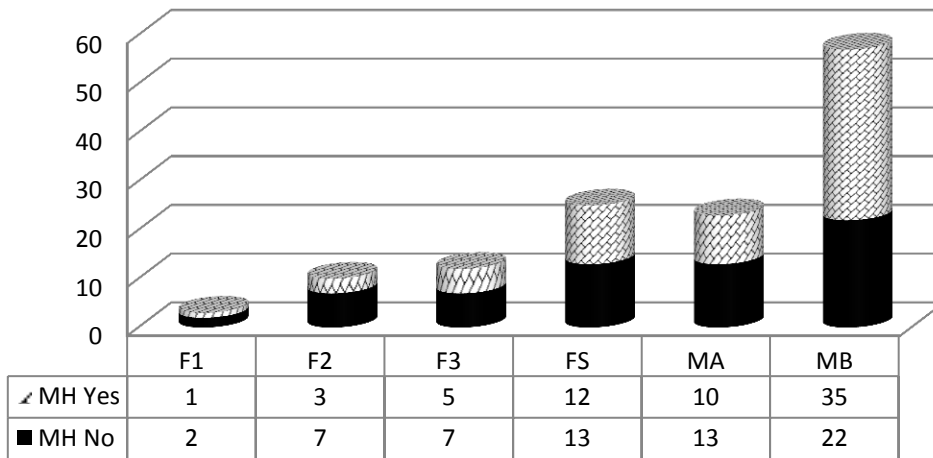
Avg. Days in Jail



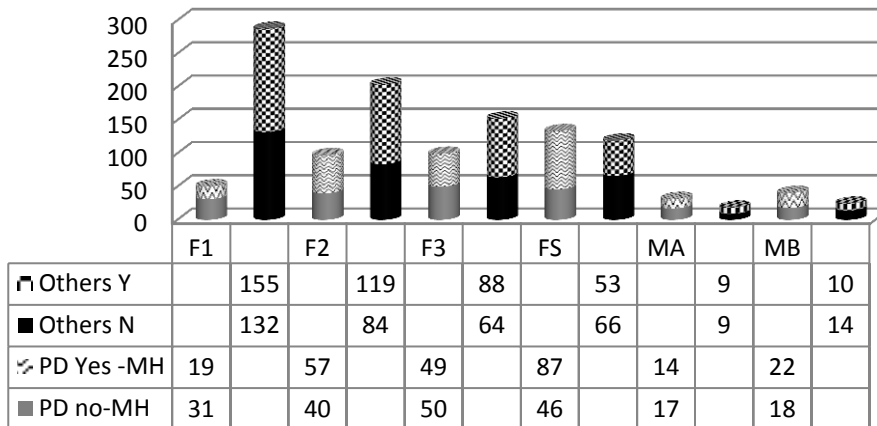
Attorney Type



PD Degree of Offense



Avg. Days in Jail Attorney Type



Monthly JIMI/STELLA Jail Mental Health Flag Report

2017 TOTALS

	Total Bookins	Total Unique Individuals Flagged for Mental Health	Mental Health Flag Categories:	NorthStar ID	NTBHA ID	TLETS Match	PAP Flag	MH AIS Flag
YEARLY 2017 TOTAL	66,154	31,849		11,324	4,028	14,787	3,127	22,826
			Percentages	35.56%	12.65%	46.43%	9.82%	71.67%

2018 TOTALS

MONTH	Total Bookins	Total Unique Individuals Flagged for Mental Health	Mental Health Flag Categories:	NorthStar ID	NTBHA ID	TLETS Match	PAP Flag	MH AIS Flag
Jan-18	5,318	3,349		966	525	1368	355	2109
Feb-18	4,715	2,992		927	517	1299	333	1920
			Percentages	30.98%	17.28%	41.98%	11.13%	64.17%

***Note:** Data listed above is reflective of unique individuals who receive at least one mental health flag from one of the identified categories. Individuals may be flagged in more than one category. Percentages above are indicative of that specific mental health flag category only.

Mental Health Flag Categories Explained

NorthStar ID:	Individuals who have an identified service utilization history and service ID from the previous mental health Northstar system
NTBHA ID:	Individuals who have an identified service utilization and service ID from the current mental health NTBHA system
TLETS Match:	Texas Law Enforcement Telecommunications System, Flags sent from DPS that shows individuals who have any history of state-paid MH service
PAP Flag:	Parkland Jail Health Psychological Assessment Program
MH AIS Flag:	Individuals flagged for mental health concerns through the bookin process (from the gold form)

HARRY INGRAM				FY2018 ATLAS STATISTICS									203/HAWTHORNE				
MONTH	BEGINNING # OF PENDING CASES	+NEW CASES RECEIVED THIS MONTH	=TOTAL CASES	TBJ	TBC	PLEAS	REV	GRADUATES	PROBATIO N MODIFICA TIONS	DISMISS ALS	OTHERS	TOTAL DISPOSI TIONS	ENDING # PENDING CASES **	CURREN TATLAS PARTICI PANTS	CURRENT PARTICIPA NTS IN CUSTODY	FORMER ATLAS PARTICIPA NTS	BOND
January	34	7	41	0	0	0	0	2	1	2	0	5	36	24	0	0	24

HARRY INGRAM		FY2018 MISDEMEANOR MENTAL HEALTH COURT STATS										CCCAP1/WADE		
MONTH	BEGINNING # OF PENDING CASES	Rediverts	+NEW CASES RECEIVED THIS MONTH	=TOTAL CASES	TBJ	TBC	PLEAS	DISMISSAL	OTHER	TOTAL DISPOS ITIONS	ENDING # PENDIN G CASES **	CURRE NT PARTIC IPANTS	NUMBE R OF GRADU ATES	BOND***
January	114	0	1	115	0	0	1	5	2	8	107	16	4	16

HARRY INGRAM									FY2018 S.E.T. STATISTICS							291st		
MONTH	BEGINNING # OF PENDING CASES	+NEW CASES RECEIVED THIS MONTH	=TOTAL CASES	TBJ	TBC	PLEAS	REV	GRADUATES	PROBATIO N MODIFICA TIONS	DISMISS ALS	OTHERS	TOTAL DISPOSI TIONS	ENDING # PENDING CASES **	CURREN T PARTICI PANTS	CURRENT PARTICIPA NTS IN CUSTODY	FORMER PARTICIPA NTS	BOND	
January	45	1	46	0	0	0	0	3	0	0	1	4	42	14	0	0	14	

January		FY2018 MHPD STATS										
MONTH	BEGINNING # OF PENDING CASES	+NEW CASES RECEIVED THIS MONTH	=TOTAL CASES	TRIALS	PLEAS	COND. DISM.	REVO- CATION	DISMISSALS	INCOMPET ENT	REFER ALS	OTHER COUNSE L APPT.	TOTAL CLOSE D
R. LENOX	228	35	263	0	5	3	4	10	4	0	12	38
L. TAYLOR	234	22	256	2	6	0	0	4	0	0	3	15

MALCOM HARDEN			FY2018 FELONY COMPETENCY STATISTICS													
	BEGINNING # OF CASES	NEW CASES THIS MONTH	TBJ	TBC	Alt. Trial Dispos.	PLEAS	REVO- CATION S	DISMISSALS	PROBAT ON	COMP. HRG.	EXTENS IONS	CIVIL COMMI T.	MHMR REFERR AL	CONSU LTS	OTHER	ENDING # OF PEOPLE IN OCR
January	138	20	0	0	0	1	0	4	1	17	3	0	0	0	2	10

MALCOM HARDEN			FY2018 MISDEMEANOR COMPETENCY STATISTICS													
MONTH	BEGINNING # OF CASES	NEW CASES THIS MONTH	TBJ	TBC	Alt. Trial Dispos.	PLEAS	REVO- CATION S	DISMISSALS	PROBATI ON	COMP. HRG.	EXTENS IONS	CIVIL COMMI T.	MHMR REFERR AL	CONSU LTS	OTHER	ENDING # OF PEOPLE IN OCR
January	147	47	0	0	0	1	0	32	0	34	14	0	0	0	2	22

January		MI Court																
MONTH	TOTAL NEW CASES RECEIVED	NEW CLIENTS AT GREEN OAKS	NEW CLIENTS AT MEDICAL CENTER MCKINNEY	NEW CLIENTS AT PARKLAND	NEW CLIENTS AT DALLAS BEHAVIORAL HEALTH	NEW CLIENTS AT GARLAND BEHAVIORAL	NEW CLIENTS AT ZALE LIPSHY	NEW CLIENTS AT SUNDANCE BEHAVIORAL HEALTHCARE	NEW CLIENTS AT HICKORY TRAILS	NEW CLIENTS AT METHUEN DIST RICHARDSON	NEW CLIENTS AT DALLAS PRESBYTERIAN	NEW CLIENTS AT VA	NEW CLIENTS AT WELLB RIDGE	NEW CLIENTS AT TIMBER LAWN	PROBABLE CAUSE HEARINGS HELD	NO CONTEST COMMIT	CONTESTED COMMIT	FORCED MEDS HEARING IN COURT
L. ROBERTS	152	101	11	0	0	8	0	13	0	13	0	0	1	5	2	0	12	12
L. TAYLOR	62	0	0	14	19	7	5	6	11	0	0	0	0	0	0	0	2	2
R. BLACK	35	0	0	0	26	0	0	0	9	0	0	0	0	0	1	0	0	0

RANDA BLACK		MI COURT							*Number of new cases decreased due to increase in 46B cases.	
MONTH	NEW CLIENTS	PROBABLE CAUSE HEARINGS HELD	NO CONTEST COMMIT TO TSH	CONTESTED COMMIT TO TSH	RECOMMITMENTS	MEDICATION HEARINGS	OUTPATIENT	JURY TRIAL		
January	18	2	5	16	0	21	0	0		

MICHAELA HIMES		MHPR BOND STATS			
	INITIAL ELIGIBILITY DAILY	MHPR BOND APPOINTMENTS FROM DAILY	MHPR BOND HEARING-GRANTEES	MHPR BOND HEARING-DENIED	TOTAL HEARINGS
January	1234	162	62	5	67

HARRY INGRAM		FY2018 ATLAS STATISTICS										203/HAWTHORNE					
MONTH	BEGINNING # OF PENDING CASES	+NEW CASES RECEIVED THIS MONTH	=TOTAL CASES	TBJ	TBC	PLEAS	REV	GRADUATES	PROBATION MODIFICATIONS	DISMISSALS	OTHERS	TOTAL DISPOSITIONS	ENDING # PENDING CASES **	CURRENT ATLAS PARTICIPANTS	CURRENT PARTICIPANTS IN CUSTODY	FORMER ATLAS PARTICIPANTS	BOND
February	36	3	39	0	0	0	0	0	6	0	0	6	33	24	0	0	24

HARRY INGRAM		FY2018 MISDEMEANOR MENTAL HEALTH COURT STATS										CCCAP1/WADE					
MONTH	BEGINNING # OF PENDING CASES	Rediverts	+NEW CASES RECEIVED THIS MONTH	=TOTAL CASES	TBJ	TBC	PLEAS	DISMISSAL	OTHER	TOTAL DISPOSITIONS	ENDING # PENDING CASES **	CURRENT PARTICIPANTS	NUMBER OF GRADUATES	BOND***			
February	107	0	13	120	0	0	4	3	4	11	109	19	3	19			

HARRY INGRAM		FY2018 S.E.T. STATISTICS										291st					
MONTH	BEGINNING # OF PENDING CASES	+NEW CASES RECEIVED THIS MONTH	=TOTAL CASES	TBJ	TBC	PLEAS	REV	GRADUATES	PROBATION MODIFICATIONS	DISMISSALS	OTHERS	TOTAL DISPOSITIONS	ENDING # PENDING CASES **	CURRENT ATLAS PARTICIPANTS	CURRENT PARTICIPANTS IN CUSTODY	FORMER PARTICIPANTS	BOND
February	42	2	44	0	0	0	0	0	0	0	0	0	44	15			

February		FY2018 MHPD STATS															
MONTH	BEGINNING # OF PENDING CASES	+NEW CASES RECEIVED THIS MONTH	=TOTAL CASES	TRIALS	PLEAS	COND. DISM.	REVOCATION	DISMISSALS	INCOMPETENT	REFERRALS	OTHER COUNSEL APPT.	TOTAL CLOSED					
R. LENOX	225	37	262	0	5	8	3	2	0	0	6	24					
L. TAYLOR																	

MALCOM HARDEN			FY2018 FELONY COMPETENCY STATISTICS													
	BEGINNING # OF CASES	NEW CASES THIS MONTH	TBJ	TBC	Alt. Trial Dispos.	PLEAS	REVO- CATION S	DISMISSALS	PROBAT ON	COMP. HRG.	EXTENS IONS	CIVIL COMMI T.	MHMR REFERR AL	CONSU LTS	OTHER	ENDING # OF PEOPLE IN OCR
February	150	8	0	0	0	2	0	5	0	14	4	1	0	0	11	14

MALCOM HARDEN			FY2018 MISDEMEANOR COMPETENCY STATISTICS													
MONTH	BEGINNING # OF CASES	NEW CASES THIS MONTH	TBJ	TBC	Alt. Trial Dispos.	PLEAS	REVOCATION S	DISMISSALS	PROBATION	COMP. HRG.	EXTENSIONS	CIVIL COMMIT.	MHMR REFERRAL	CONSULTS	OTHER	ENDING # OF PEOPLE IN OCR
February	159	24	0	0	0	1	0	14	0	12	5	0	0	0	0	17

February		MI Court																
MONTH	TOTAL NEW CASES RECEIVED	NEW CLIENTS AT GREEN OAKS	NEW CLIENTS AT MEDICAL CENTER MCKINNEY	NEW CLIENTS AT PARKLAND	NEW CLIENTS AT DALLAS BEHAVIORAL HEALTH	NEW CLIENTS AT GARLAND BEHAVIORAL	NEW CLIENTS AT ZALE LIPSHY	NEW CLIENTS AT SUNDANCE BEHAVIORAL HEALTHCARE	NEW CLIENTS AT HICKORY TRAILS	NEW CLIENTS AT METHUEN DISTRICT RICHARDSON	NEW CLIENTS AT DALLAS PRESBYTERIAN	NEW CLIENTS AT VA	NEW CLIENTS AT WELLB RIDGE	NEW CLIENTS AT TIMBER LAWN	PROBABLY CAUSE HEARINGS HELD	NO CONTEST COMMIT	CONTESTED COMMIT	FORCED MEDS HEARING IN COURT
L. ROBERTS	99	70	7	0	0	7	0	8	0	7	0	0	0	0	2	0	12	12
L. TAYLOR																		
R. BLACK	33	0	0	0	21	0	0	0	12	0	0	0	0	0	1	0	3	3

RANDA BLACK		MI COURT			*Number of new cases decreased due to increase in 46B cases.				
MONTH	NEW CLIENTS	PROBABLE CAUSE HEARINGS HELD	NO CONTEST COMMIT TO TSH	CONTESTED COMMIT TO TSH	RECOMMITMENTS	MEDICATION HEARINGS	OUTPATIENT	JURY TRIAL	
February	16	0	4	5	7	13	0	0	

MICHAELA HIMES		MHPR BOND STATS					
	INITIAL ELIGIBILITY	MHPR BOND APPOINTMENTS FROM DAILY HEARINGS	MHPR BOND HEARING-GRANTED	MHPR BOND HEARING-DENIED	TOTAL HEARINGS		
February	1262	150	42	8	50		

The Bridge	2017	2017	2017	2017	2017	2017	2017	2017	2017	2017	2017	2017	
	Mar.	April	May	June	July	August	Sept.	Oct.	Nov.	Dec.	Jan.	Feb.	AVG.
Bridge Night Shelter	427	426	445	471	427	431	436	487	480	478	496	439	451
Off-site Night Shelter Coordination	489	485	472	498	531	482	448	459	452	615	506	501	493
Care Coordination	980	875	1009	1053	1034	1024	968	1010	964	955	1006	944	987
Peer Support Services	335	358	488	429	393	232	263	231	424	337	468	271	349
Job Placements	32	20	33	33	39	24	26	32	27	28	19	26	29
Housing Placements	21	20	19	11	20	47	31	45	32	24	25	20	27
Metrocare Mental Health Serv.	373	331	343	355	349	345	326	335	424	269	337	287	345
Metrocare Chemical Dep. Serv.	16	13	18	18	17	14	17	23	20	22	22	22	18
Parkland Clinic*	676	638	796	698	670	703	661	510	405	585	561	551	634
Judicial Re-Entry	4	3	5	3	3	3	3	3	8	2	11	6	5
Jail Release (General)	16	28	31	25	18	20	16	20	25	14		28	21

Each category represents *unduplicated guests* , not totals served.

*exception - Parkland Clinic number is for total visits.

NAME OF MHMR PROGRAM: Metrocare Services
PROGRAM: SNOP

MONTH OF REPORT:01_2018

DATE SUBMITTED: 03_2018

	ATLAS	Post-DDRTC	STAC	Misd.	PRIDE	DDRTC	PROBATION ICM	PAROLE ICM
1. Number of Offenders served at the beginning of the month:	17	42	22	17	1	52	64	62
2. Number of Referrals received:	2	5	2	2	3	15	1	10
3. Number of Assessments:	2	5	2	2	3	10	1	10
4. Number of Admissions:	2	5	2	2	3	10	1	10
5. Average length of stay by months:	2.69	2.61	3.14	2.47	1.83		3.45	4.03
5. a. Average hours served:	7.31	4.99	3.52	7.05	4.25	24.56	4.22	8.14
6. Services Utilized:	0	0	0	0	0	0	0	0
6. a. Visits to ER (medical)	0	0	0	0	0	1	0	0
6. b. 23-hour Observation (psych)	0	0	0	0	0	1	0	0
6. c. Inpatient Stay (med/psych)	0	0	0	0	0	1	0	0
6. d. Jail days less than 30 days:	0	0	0	0	0	0	0	0
7. Number of Discharges:	5	6	4	6	0	12	7	13
7. a. Terminations (jail more than 30 days)	2	4	4	0	0	0	2	0
7. b. Warrants/Suspension: (medical d.c.; abscond)	1	2	0	2	0	6	2	1
7 c. Graduates	2	0	0	4	0	6	1	1
8. Number of Offenders served at the end of month:	14	41	20	13	4	50	58	59
9. Number of Offenders on the waiting list:	0	0	0	0	0	10	0	0
10. Minimum/Maximum Census per FTE allocation	20-25	30-38	30-38	30-38	10-12	60	90/115	90/115
11. % of FTE Assigned	1	1.5	1.5	1	0.5	2	4.5	3.5
12. Vacancy(s)	0	0	0	0	0	1	0.5	0.5

Each FTE covers 20-25

NAME OF MHMR PROGRAM: Metrocare Services
PROGRAM: SNOP

MONTH OF REPORT:02_2018

DATE SUBMITTED: 03_2018

	ATLAS	Post-DDRTC	STAC	Misd.	PRIDE	DDRTC	PROBATION ICM	PAROLE ICM
1. Number of Offenders served at the beginning of the month:	14	41	20	13	4	52	58	59
2. Number of Referrals received:	4	6	2	5	0	14	8	19
3. Number of Assessments:	4	6	2	5	0	16	8	19
4. Number of Admissions:	4	6	2	5	0	16	8	19
5. Average length of stay by months:	2.8	3.11	2.39	2.19	0.54	N/A	6.68	6.62
5. a. Average hours served:	5.66	4.9	3.77	5.69	3.5	29.47	3.89	6.49
6. Services Utilized:	0	0	0	0	0	4	0	0
6. a. Visits to ER (medical)	0	0	0	0	0	1	0	0
6. b. 23-hour Observation (psych)	0	0	0	0	0	1	0	1
6. c. Inpatient Stay (med/psych)	0	0	0	0	0	2	0	0
6. d. Jail days less than 30 days:	0	0	0	0	0	0	0	0
7. Number of Discharges:	0	2	6	5	3	13	5	10
7. a. Terminations (jail more than 30 days)	0	0	0	1	1	0	4	2
7. b. Warrants/Suspension: (medical d.c.; abscond)	0	0	1	1	0	6	0	6
7 c. Graduates	0	0	5	3	2	7	0	0
8. Number of Offenders served at the end of month:	18	45	16	13	1	55	62	69
9. Number of Offenders on the waiting list:	0	0	0	0	0	9	0	0
10. Minimum/Maximum Census per FTE allocation	20-25	30-38	30-38	30-38	10-12	60	90/115	90/115
11. % of FTE Assigned	1	1.5	1.5	1	0.5	2	4.5	3.5
12. Vacancy(s)	0	0	0	0	0	1	0.5	0.5

Each FTE covers 20-25

Outpatient Competency Restoration Monthly Totals														
	Jan	Feb	Mar	April	May	June	July	Aug	Sept	Oct	Nov	Dec	2018 Totals	2017 Totals
Beginning of Month	21	21	23											
<u>Misdemeanor</u>	10	12	14											
Placed in OCR	3	5											8	68
Homeless @ admit	2	4											6	39
Dispo	1	3											4	69
Outpatient to Inpatient	0	1											1	24
Abscond	0	1											1	11
Restored and Resolved	1	1											2	21
Not restored -- Dismissed	0	0											0	13
<u>Felony</u>	11	9	9											
Placed in OCR	1	4											5	35
Homeless @ admit	1	4											5	10
Dispo	3	4											7	54
Outpatient to Inpatient	1	1											2	16
Abscond	1	2											3	14
Restored	1	0											1	18
Not restored -- Dismissed	0	1											1	6
End of Month	21	23	0	0	0	0	0	0	0	0	0	0		

DIVERT FY 18

FY2018	Start of Month	New admissions	DAOpt-out	Unsuccessful discharge	Graduates	INS deportation	End of Month
Sept. 17	122	5	0	2	11	0	114
Oct. 17	114	11	0	1	8	0	116
Nov. 17	116	14	0	1	0	0	129
Dec. 17	129	11	0	2	5	0	133
Jan. 18	133	13	0	3	3	0	140
Feb. 18	140	14	0	5	3	0	146
Mar. 18							
Apr. 18							
May. 18							
Jun. 18							
Jul. 18							
Aug. 18							
total		68	0	14	30	0	

ATLAS Court

FY18	Start of Month	New admissions	DA Opt-out	Unsuccessful discharge	Graduates	End of Month
Sept. 17	22	6	0	0	0	28
Oct. 17	28	7	0	6	0	29
Nov. 17	29	2	0	2	0	29
Dec. 17	29	2	0	3	0	28
Jan. 18	28	4	0	2	2	28
Feb. 18	28	2	0	3	0	27
Mar. 18						
Apr. 18						
May. 18						
Jun. 18						
Jul. 18						
Aug. 18						

* Denotes that numbers are slightly lower due to missing data.

DDAC Court

FY18	Start of Month	New admissions	DA Opt-out	Unsuccessful discharge	Graduates	End of Month
Sept. 17	36	6	0	3	9	30
Oct. 17	30	8	0	2	0	36
Nov. 17	36	3	0	2	0	37
Dec. 17	37	3	0	1	5	34
Jan. 18	34	3	0	5	0	32
Feb. 18	32	6	0	2	0	36
Mar. 18						
Apr. 18						
May-18						
Jun. 18						
Jul. 18						
Aug. 18						

* Denotes that numbers are slightly lower due to missing data.

MMH Court

FY18	Start of Month	New admissions	DA Opt-out	Unsuccessful discharge	Graduates	End of Month
Sept. 17	35	5	0	8	0	32
Oct. 17	32	5	0	3	4	30
Nov. 17	30	2	0	3	0	29
Dec. 17	29	2	0	2	0	29
Jan. 18	29	2	0	0	4	27
Feb. 18	27	3	0	2	3	25
Mar. 18						
Apr. 18						
May-18						
Jun. 18						
Jul. 18						
Aug. 18						

STAC COURT

FY18	Start of Month	New Admissions	Unsuccessful discharges*	Graduates	End of Month
Sep. 17	138	11	10	0	150
Oct. 17	150	14	12	0	152
Nov. 17	152	17	5	21	143
Dec. 16	143	19	5	0	145
Jan. 18	145	19	10	0	155
Feb. 18	155	15	4	27	139
Mar. 18					
Apr. 18					
May. 18					
Jun. 18					
Jul. 18					
Aug. 18					

FY18	MH Current	MH admissions	MH discharges	Graduates	End of Month
Sep. 17	33	7	2	0	34
Oct. 17	34	4	4	0	30
Nov. 17	30	2	0	5	27
Dec. 17	27	7	1	0	30
Jan. 18	30	3	1	0	33
Feb. 18	33	5	1	5	23
Mar. 18					
Apr. 18					
May. 18					
Jun. 18					
Jul. 18					
Aug. 18					

*Unsuccessful discharges are those who absconded or were sent to their COJ for further treatment.

STAR Court

FY18	Start of Month	New admissions	DA Opt-out	Unsuccessful discharge	Graduates	End of Month
Sept. 17	6	1	0	1	0	6
Oct. 17	6	3	0	0	0	9
Nov. 17	9	1	0	0	0	10
Dec. 17	10	0	0	0	1	9
Jan. 18	9	3	0	0	0	12
Feb. 18	12	0	0	1	1	10
Mar. 18						
Apr. 18						
May-18						
Jun. 18						
Jul. 18						
Aug. 18						

* Denotes slightly lower numbers due to incomplete data.