



DALLAS COUNTY
Criminal Justice Department

Behavioral Health Steering Committee

Thursday, July 19, 2018

Agenda

1. Welcome and Call to Order
2. Review and approval of minutes from May 2018
3. Presentations: St. Jude Project *Joyce White*
NADCP Lynn Richardson/Vickie Rice
4. Caruth Smart Justice Grant Update (*Mike Laughlin/MMHPI*)
5. SAMHSA Update *Laura Edmonds*
6. 530 Sub Committee *Leah Gamble*
7. BHLT & CSP Update *Laura Edmonds/Adapt*
8. Jail Reports
 - Hospital Movement *Janine Capetillo*
 - Homeless Report *Kimberly Rawls*
 - Mental Health Case Matches *Laura/Mike Laughlin*
9. Public Defenders Report *Lynn Richardson*
10. District Attorney's Report *Lee Pierson*
11. Provider Reports
 - The Bridge *Kelly Kane*
 - Metrocare *Crystal Garland*
 - IPS Reports *Enrique Morris/Jessica Simmons*
12. Problem Solving Courts
 - Outpatient Competency *Janine Capetillo*
 - DIVERT *Keta Dickerson*
13. Specialty Courts CSCD *Serena McNair/Rosa Sandles*
14. Announcements
15. Adjourn

***Action and Discussion Items**



DALLAS COUNTY, TEXAS

Minutes of the Behavioral Health Steering Committee (BHSC) Meeting Thursday, May 17, 2018

Call to order and Introductions

The meeting was called to order by Judge Kristin Wade at 8:35 am. 35 staff and agency representatives/providers were in attendance with names recorded on the attached meeting sign-in sheet. Introductions were done around the room.

Minutes review and approval

The **minutes** from the last bi-monthly BHSC meeting held on March 15, 2018 (packet pgs. 1-4), were reviewed with motion and second by Pat Jones and Kendall McKimmey respectively for acceptance with no discussion or corrections. Motion unanimously passed accepting minutes as read without objection. Everyone introduced themselves along with guests.

Caruth Grant: Mike Laughlin provided the MMHPI Smart Justice Grant quarterly update (March 2018) along with data through February 2018 (packet pages 8-13). The 3-year, \$7 million Implementation Grant submitted by MMHPI was awarded in October 2016, and continues to be the source of Dallas Counties' on-going \$1.174 million sub-grant that started in Jan. 2017 to address Sequential Intercepts 2-4, and part of 5. Mike gave an update on the current status and upcoming actions related to the award. The full implementation launched on August 14th at the end of the BETA phase, and all the workgroups and sub-teams for the Intercepts 2-4 continue to meet/complete tasks related to procedures/forms, Court orders, space/staff preparations, modified resource allocations, training curriculums/plans, etc. Mike also provided program activity/performance data through January 2018 reflecting:

February 2018 MHPR Bond Data Summary:

- 1261 were screened MH positive (**100% of all book-ins were MH screened**)
- 150 were found MHPR Bond eligible by PTS and ordered for assessment
- 121 were fully assessed (most with Rec's for Standard IOP and Routine OP, and 7 of those rec'd to **LOC 4/5 ACT/FACT** and referred to 2 of the 3 designated service providers
- 33 were not fully assessed (see breakdown in sheet #3, table #3, columns B-F)
- 99 were disposed by other means prior to presentation to the Magistrate/Court (see notes, breakdown of reasons on worksheet #2 tables 1, 2 and 3)
- 51 were presented to the Court for bond decision
- 40 of those were granted bond and released (27 via "special release processes", formerly called *special program holds*, and 3 by other means)
- 8 of the 40 were denied bond and detained
- 40 bond-released defendants (**100%**) were opened by PTS
- 40 releasees (**100%**) were connected/referred to follow up treatment by ACS and PTS
- 46 MHPR Bond cases were closed by PTS (15 successful/25 unsuccessful)

- 7 following assessment, were for the first time identified/counted for **LOC 4-5 ACT/FACT/IOP**, and were referred to 2 of the 3 designated service providers
- 7 jail days length of stay (LOS) for those actually released via MHPR bond
- Recidivism in Feb. 2018 for all those identified as MH was 266 people for a total of 398 re-bookings, reflecting a to-date recidivism for all ID as MH of 17.6%.

The completion of the start to finish, process flowchart was completed in November 2017 for everyone to commonly follow, along with individual team protocols, along with an agreed set of data elements/definitions for tracking implementation progress and client/system outcomes among all parties. Lastly, MMHPI and the County continue to meet and work with community providers to build up treatment resources related to Intercept 5 (post-release services/oversight) for referral and treatment connection upon release. The fidelity reviews were completed in the fall, and contracts were executed shortly thereafter with the first patients being accepted and treated in November. This will soon also include randomized assignment into control and enhanced ACT and FACT treatment groups to test new forensically enhanced treatment options to reduce risk and increase stability, treatment recovery, and Court/program compliance.

Mike emphasized that there are still small but growing numbers, and that we will continue to expand as capacity ramps up. In the meantime the smaller numbers have made it easier to overcome some barriers and logistical challenges. Ultimately, the flowchart and data guide will assist in sharing information, resolving bugs, and tracking and progress on program development, activity, performance, and outcomes.

Mike also presented updates on progress with Intercepts 1 advising that the City and Meadows have jointly made great strides in setting up the new pre-arrest diversion protocols, staffing, and resources for the emergency response RIGHT Care Teams with early training completed, and beta testing that began in January. They have outfitted an unmarked vehicle and began testing of the Parkland clinician imbeds. They had a successful media event at Dallas Fire Station #46 in January with initial focus on South Central of Dallas. As mentioned above, with Intercept 5, all the contracted providers have reviewed and approved new agreements, training for beta implementation was completed in January, and providers are receiving and providing services to clients.

Reminder that housing services will be built up within the Caruth Grant Intercept #5 to include new processes for HMIS enrollment prior to jail release. Additionally, HUD has identified and targeted the super utilizer for service impact which also includes emergency shelter funds, and rapid re-housing programs.

BHSC Data and Reports – Judge Wade

Program and Department Updates: Program/outcome data, updates, and workload reports were presented and accepted via relevant dept./agency staff for the SAMHSA Grant, 530 Subcommittee, BHLT/CSP, Public Defenders, District Attorneys, CJ Dept. Jail reports, etc. (see packet pgs. 16-35 for details).

Laura presented the SAMHSA Grant update along with associated data and activities (see packet pg. 16). They continue to maintain a good census, but referrals are slowing and need to increase. Everyone was reminded to promote it and make referrals.

Shenna presented the summary from latest 530 Subcommittee meeting activities and expenses. The 530 Subcommittee recently approved and needs BHSC approval for \$315 to PRIDE and \$2190 to STAC Court for program expenditures from budget line items within FY 2018. Motion made and seconded by Leah Gamble and Laura Edmonds respectively with unanimous approval without discussion or objection.

Several spoke about the upcoming NADCP Conference in Houston later this month, along with the current MH/Competency training this week at Kerrville State Hospital attended by staff. Judge Wade suggested some training during the next BHSC meeting in July covering both of these events from some of those attending.

CSP stats and metrics for March through April were presented/reviewed by Laura (see packet pgs. 19-25), and they are exceeding YTD outcomes and DY metrics. There continues to be an uptick in the numbers due to the new Caruth MH PR Bonds.

The Medicaid 1115 Transformation Waiver was renewed, but will receive increasingly reduced amounts in the later years of the 5-year renewal. We will all continue to develop alternate resources for sustainability in the meantime. We are in the middle of re-negotiating some contracts at this time. 1115 Waiver and CSP currently funds many of our services/operations like IPS Aftercare services, Transicare Continuity of care operations, MHPR Bond assessments via ACS, Salvation Army Drug Treatment beds via CSCD, Transicare transport/treatment linkage services, hospital returns and transport, etc.

Jail/hospital movement, and homeless data/reports were presented by Laura/Kim Rawls (in Janine's absence who is attending the Kerrville State Hospital Competency training), and can be found in the packet on pages 26-29. We continuing to engage in preparatory efforts to gear up for the SB 292 enhanced competency programming with focus as follows:

- ACT/FACT: intensive service for OCR transition, and for ICR to discharge back into in community.
- Provides intensive wrap-around treatment and community support for faster, more efficient connection to higher level outpatient care for better stabilization and lower recidivism.
- Funds will provide additional ACT/FACT treatment slots in the community
- Also allows NTBHA to implement jail-based assessors to better identify those meeting ACT/FACT criteria, facilitate ACT/FACT authorization and improve engagement with community-based provider as they exit Jail.

The target is for more of the "chronic" cases vs. "acute", and will also include mechanisms by Parkland to minimize use of forced medications. The DA's Office advise that all competency cases will be reviewed individually as to whether they will qualify and allowed to be accepted into this program based on their criminal history, medical/mental condition, and current case details. They will also review those who may qualify or be converted instead to the conditional dismissal program, civil commitment or other. This also includes those waiting for NGBI (not guilty by reason of insanity) review at a maximum security state hospital facility (e.g., Vernon State Hospital).

Homeless numbers are on page 27-29 and were present by Kim Rawls.

Monthly JIMI/Stella MH Flag Report: Laura provided the MH prevalence for YTD showing 40% (Northstar), 16% (NTBHA ID), 43% (TLETS), 7% (PAP flag), and 64% (AIS) per pg. 30 of packet.

All other department and agency data reports and program updates were accepted as read, and can be reviewed in the meeting packet.

Vickie Rice presented the **Public Defender MH case data and reports (pgs. 31-33)** adding that a new Asst. Public Defender was added for competency. He will be focusing more on those going to hospital via competency, and hospital returns.

Vickie reminded all of the upcoming CLE MH training for the local defense bar (DCDLA) in September. Vickie asked everyone to email Mike if they are interested in submitting their material and/or participating in the training. DCDLA will arrange/pay for CLE credits.

ADA McKimney provided the **DA data updates and report** (page 34 of packet).

Provider Reports

Kelly Lane from The Bridge reported their numbers (pg. 35) mentioning they just celebrated their 10-year anniversary, that Dr. Woody was indeed selected and installed as the new permanent CEO. They are also looking at ways to expand in the near future by about 50 beds. Mike Laughlin asked about the DFR coverage and Kelly advised that DFR/EMT cover from 8am-4pm during the week having cut back since March due to funding. They are also providing a shuttle to/from Parkland in lieu of the ambulance.

Metrocare: Crystal Garland presented Metrocare data/reports (pg. 36-37) with no changes of note, but did note that PRIDE Court numbers are currently low. She also advised that TCOOMI will now fund a new person at SNOP Clinic to serve about 400 SNOP clients to assist with benefits determination and the Prescription Assistance Program. Additionally, Marlene Buchanan advised that the Midland Clinic will close down operations on 5/25/18 due to funding constraints and patient service demand for that location. Those clients being served there now will move to the other existing Metrocare Clinic locations.

IPS: Supplemental agenda insert was provided by Enrique/IPS. He directed everyone to page 1 showing growing admissions due to non-detox and MAT services driven by NTBHA contract extensions and expansions. He also addressed gender/ethnic distribution (stable), as well as drug of choice and program progression data on page 2. He asked about community pharmacy expense changes advising there was no provider reimbursement to arrange PAP enrollment. He reminded everyone that they can communicate with any admission/intake needs by phone or at www.ipsrecovery.com.

Pat Jones talked about the 340(b) Pharmacy program for funding vs. wholesale funding. It was agreed to explore this.

Specialty Courts: Kim Rawls presented OCR Court data (pg. 38), and DIVERT Court data can be found on page 39 with no concerns or further comments.

Specialty Court numbers for post adjudication (pages 40-44) was also provided noting numbers are down with arrests down too and more Judges giving time-served. It was also mentioned that female count is down in the specialty court program except for MH and Prostitution, but yet young females are on the rise in the CJ system nationally (per Dr. Johansson Love). Additionally, several spoke about the prostitution program at the truck stop having been discontinued, and that there wasn't enough concurrent attention to the males purchasing the illegal services. Some mentioned that the word is out that in Dallas prostitution is also being seen/handled more as legal lately. Leah mentioned that we may need to pull the last couple of months of arrest data to view trends.

Metrocare continues to be CSCD's primary MH treatment source; everyone is reminded to refer any potential client with high mental health needs to Metrocare.

Funding: Everyone was again encouraged to keep good track of program/outcome numbers to ensure they are accurate and that your target population makes up most of your slots and program effort.

Lastly, several spoke about need for more training and resources for transgender clients. It was agreed this should be pursued. One person mentioned getting someone from the Resource Center to put a packet together, which was agreed. Several others mentioned there were resources via HHS (new committee being formed to ID and address community needs, as well as the Stew Pot (support group). Deana Roper mentioned that she is SAMHSA trained LGTBQ, and available to assist. Judge wanted to set up training in September, and also mentioned putting a workgroup together to talk on policies, programming, resources, etc. Vickie and Serena discussed issues about UAs, how people are addressed, and setting consistent policies.

Announcements

Smart Justice/Data Driven Justice: Mike mentioned NACo achievement award received, with award ceremony in Nashville in July. Smart Justice was also selected to present a workshop at NAPSA 2018 Conf. in August at the Fort Worth Omni. Lastly, we did not get selected for the Data Driven Justice Leadership Lab, but have been accepted by NACo for some specialized technical assistance in the coming weeks due to our advanced work and continued pursuit of the issue. We will be spotlighted in the NACo circular in the next month for Smart Justice and Data Driven Justice work in Dallas.

Housing: training for cross-disciplinary groups will be held again soon with date and details forthcoming.

Vickie Rice reminded all that **select BHSC reps. will be leading the DCDLA CLE in September 2018** using a mix of 5-minute slots each to cover select number of each person's own programs/responsibilities. Anyone interested to be on this speaker list needs to email Mike Laughlin asap, and then also provide their portion of the presentation material to him by July 1 so there's time to review/compile it and coordinate with each other. This information will be sent out to the DCDLA listserv in advance.

Lastly, the monthly **Delightful Discussions (specialty court) training will be skipped in May due to NADCP, and return in June** with date/place TBD.

Adjournment

The meeting was adjourned by Judge Wade at 945 am. The next bi-meeting is set for Thursday, July 19, 2018, at 830am in the same location. Reminder was provided to everyone to submit their monthly stats to Mike Laughlin via email by the 2nd Friday of each month for tracking and distribution.

SMART JUSTICE GRANT - MENTAL HEALTH PR BOND PRETRIAL AND MAGISTRATE COURT ACTIVITIES SUMMARY

Col A	Col B	Col C	Col D	Col E	Col F	Col G	Col H	Col I	Col J	Col K	Col L	Col M	Col N	Col O	Col P	Col Q	Col R	Col S	Col T	Col U	Col V	Col W	Col X	Col Y	
Mon./Yr.	MH Screen/ID/Order Actions			Pretrial/Magistrate Release Steps and Actions								Pretrial Case/Supervision Actions & Outcomes							Pretrial Risk Scores/Levels ⁶			Length of Stay (LOS)			
Month	Book-ins ¹	ID-possible MH	⁵ MHPR Eligible-Assess Ordered	Not presented to Mag. ²	Presented to Mag.	Fel Chg. ³	Misd chg. ³	Granted	Denied	Rel. by other means	Total releases via Special Processes	PT Cases Opened ⁴	Level 1 Supv	Level 2 Supv	Level 3 Supv	Total Cases Closed ⁵	Successful - Closed of Total	Unsuccessful - Closed of Total	ORAS - Low [0-2]	ORAS - Mod. [3-5]	ORAS - High [6-9]	Avg Jail Stay of Column C. (days)	Avg Jail Stay of Column D. (days)	Avg Jail Stay of Column I. (days)	
	Apr '17-30	2546	489	109	93	16	13	5	15	1	0	11	15	3	7	5	1	0	1	1	18	9	49	33	4
	May '17	5893	1090	213	179	34	17	27	29	2	3	19	29	5	14	10	1	0	1	11	37	20	47	24	5
	June '17	5537	874	166	127	39	14	32	31	2	6	17	31	4	23	4	8	3	5	8	43	20	42	20	8
	July '17	5615	1148	138	92	46	28	35	38	5	3	48	38	3	26	9	20	13	7	10	38	17	42	23	6
	Aug '17	5784	1698	222	138	84	50	55	72	12	0	41	72	12	43	17	20	5	15	30	77	31	40	23	5
	Sep '17	5449	1438	188	121	67	45	43	62	5	0	30	62	10	33	19	17	10	7	25	54	19	42	27	6
	Oct '17	5472	1526	193	129	64	40	46	59	3	0	34	59	10	37	14	37	12	25	15	56	21	39	20	6
	Nov '17	5203	1347	192	142	50	30	33	46	4	0	25	46	3	30	13	26	11	15	7	60	24	40	19	5
	Dec '17	5368	1185	148	100	48	40	20	46	2	0	27	46	7	23	16	21	8	13	21	40	25	40	19	10
Jan '18	4749	1284	162	95	67	44	38	58	6	3	27	58	13	30	15	45	22	23	14	48	23	36	19	5	
Feb '18	5465	1261	150	99	51	37	19	40	8	3	10	40	6	22	12	40	15	25	14	46	20	33	19	7	
Mar '18	5394	1271	175	133	42	20	18	28	13	1	18	28	6	11	11	37	15	22	9	41	29	30	17	6	
Apr '18	5625	1384	181	128	53	38	25	46	6	1	24	46	5	30	11	51	21	30	10	60	31	28	19	6	
May '18	5697	1457	243	159	84	45	45	70	14	0	34	70	16	44	10	40	15	25	26	77	34	22	13	6	
TOTAL	73797	17452	2480	1735	745	461	441	640	83	20	365	640	103	373	166	364	150	214	201	695	323	530	295	85	

Percentages of Specific Relevant Columns Within Table Above																							
Mon./Yr.	MH Screen/ID/Order Actions			Pretrial/Magistrate Release Steps and Actions								Pretrial Case/Supervision Actions & Outcomes					Pretrial Risk Scores/Levels ⁶			Length of Stay (LOS)			
MONTHS	% possible MH (of book-ins)	% ordered assessed (of MH ID list) ⁵	% not presented to Mag. (of eligible)	% presented to Mag. (of eligible)	% fel chg (of col. F)	% mid chg (of col. F)	% granted bond (col. I/F)	% denied bond (col. J/F)	% rel.-other means (col. K/F)	% of MH-ID released via spec. processes (col. L/C)	% opened (of granted)	% Lvl 1 Supv	% Lvl 2 Supv	% Lvl 3 Supv	Successful/ ⁷ Closed of Total (col. Q)	Unsuccessful/ ⁷ Closed of Total (col. Q)	% ORAS Low [0-2]	% ORAS Mod [3-5]	% ORAS High [6-9]	% Change LOS of Column C	% Change LOS of Column D	% Change LOS of Column I	
APR '17	19.2%	22.3%	85.3%	14.7%	81.3%	31.3%	93.8%	6.3%	0.0%	10.1%	100.0%	20.0%	46.7%	33.3%	0.0%	100.0%	3.6%	64.3%	32.1%	-4%	-27%	25%	
MAY '17	18.5%	19.5%	84.0%	16.0%	50.0%	79.4%	85.3%	5.9%	8.8%	8.9%	100.0%	17.2%	48.3%	34.5%	0.0%	100.0%	16.2%	54.4%	29.4%	-4%	-27%	25%	
JUN '17	15.8%	19.0%	76.5%	23.5%	35.9%	82.1%	79.5%	5.1%	15.4%	10.2%	100.0%	12.9%	74.2%	12.9%	37.5%	62.5%	11.3%	60.6%	28.2%	-11%	-17%	60%	
JUL '17	20.4%	12.0%	66.7%	33.3%	60.9%	76.1%	82.6%	10.9%	6.5%	34.8%	100.0%	7.9%	68.4%	23.7%	65.0%	35.0%	15.4%	58.5%	26.2%	0%	15%	-25%	
AUG '17	29.4%	13.1%	62.2%	37.8%	59.5%	65.5%	85.7%	14.3%	0.0%	18.5%	100.0%	16.7%	59.7%	23.6%	25.0%	75.0%	21.7%	55.8%	22.5%	-5%	0%	-17%	
SEP '17	26.4%	13.1%	64.4%	35.6%	67.2%	64.2%	92.5%	7.5%	0.0%	16.0%	100.0%	16.1%	53.2%	30.6%	58.8%	41.2%	25.5%	55.1%	19.4%	5%	17%	20%	
OCT '17	27.9%	12.6%	66.8%	33.2%	62.5%	71.9%	92.2%	4.7%	0.0%	17.6%	100.0%	16.9%	62.7%	23.7%	32.4%	67.6%	16.3%	60.9%	22.8%	-7%	-26%	0%	
Nov '17	25.9%	14.3%	74.0%	26.0%	60.0%	66.0%	92.0%	8.0%	0.0%	13.0%	100.0%	6.5%	65.2%	28.3%	42.3%	57.7%	7.7%	65.9%	26.4%	3%	-5%	-17%	
Dec '17	22.1%	12.5%	67.6%	32.4%	83.3%	41.7%	95.8%	4.2%	0.0%	18.2%	100.0%	15.2%	50.0%	34.8%	38.1%	61.9%	24.4%	46.5%	29.1%	0%	0%	100%	
Jan '18	27.0%	12.6%	58.6%	41.4%	65.7%	56.7%	86.6%	9.0%	4.5%	16.7%	100.0%	22.4%	51.7%	25.9%	48.9%	51.1%	16.5%	56.5%	27.1%	-10%	0%	-50%	
Feb '18	23.1%	11.9%	66.0%	34.0%	72.5%	37.3%	78.4%	15.7%	5.9%	6.7%	100.0%	15.0%	55.0%	30.0%	37.5%	62.5%	17.5%	57.5%	25.0%	-8%	0%	40%	
Mar '18	23.6%	13.8%	76.0%	24.0%	47.6%	42.9%	66.7%	31.0%	2.4%	10.3%	100.0%	21.4%	39.3%	39.3%	40.5%	59.5%	11.4%	51.9%	36.7%	-9%	-11%	-14%	
Apr '18	24.6%	13.1%	70.7%	29.3%	71.7%	47.2%	86.8%	11.3%	1.9%	13.3%	100.0%	10.9%	65.2%	23.9%	41.2%	58.8%	9.9%	59.4%	30.7%	-7%	12%	0%	
May '18	25.6%	16.7%	65.4%	34.6%	53.6%	53.6%	83.3%	16.7%	0.0%	14.0%	100.0%	22.9%	62.9%	14.3%	37.5%	62.5%	19.0%	56.2%	24.8%	-21%	-32%	0%	
AVG %	23.5%	14.7%	70.3%	29.7%	62.3%	58.3%	85.8%	10.7%	3.2%	14.9%	100.0%	15.9%	57.3%	27.1%	36.1%	63.9%	15.5%	57.4%	27.2%	-5.7%	-5.6%	9.4%	

Grant Metrics: the percentage in Column M, row 12 is a grant metric (at least 95%) of those released are PT opened (achieved for YTD and current month).

Column B = ¹ Number of those booked-in screened for Serious/Chronic MH (100% screen for MH needs meeting grant metric).

Column C = Number identified as possible MHPR bond eligible based on clinical presentation via ACS Triage.

Column D = cases bond eligible after CJ review, and ordered for MH assessment.

Column E = number released/disposed/processed by other means prior to presentation to Magistrate (e.g., dry writ, other PR, posted bond, case dismissal, detained, charges dropped, plead out, time-served, case-no action, client/atty refusal, competency issues, homeless, no or inadequate verifications, etc.).

² **Note:** **Column E** is the subtotal of those "not presented to Magistrate" (broken down by type and percentages in 3 tables on sheet #2, Columns B-R)

Column F = number presented to Magistrate for MHPR bond consideration (column D minus E).

³ **Column G and H** is the total case/charge count of all felony vs. misd. cases for the number of defendants (column F) presented to Magistrate for MHPR Bond consideration (these won't ever correspond exactly with the number of individual defendants counted since many have multiple cases/charges at various offense levels).

Column I vs Column J = number granted vs. denied MHPR Bond Release following Magistrate/Court review.

Column K = other release type after presentation to MHPR Bond Magistrate (see reasons list in the tables on Worksheet #2 summarizing possible release outcomes of those from column E above).

Column L = total released by "special processes" (for purposes of housing, transport, medicine, program placement, warm hand off, self-harm high risk, etc.), and is currently a subset of column C, "ID as possible MH" (also includes holds placed by attorney/court). However, we will restrict this data point to a subset of ONLY those Granted/released (Column I) in coming months once data reporting/filtering capability is increased.

Columns N, O, P = cases released under each supervision Level at release/PT case opening (with %'s shown in rows from Table #2 above).

⁴ **Note:** total of column M (PT cases opened) should always = total of column G (granted bond release) to show we didn't miss anyone.

Columns T, U, V = number and % of Ohio PT Risk category scores/levels subsequent to officer assessment/interview.

⁵ **Note:** # of cases closed for each month is based on regular case progression/termination & total will NOT match # opened for any given month.

⁶ **Note:** **columns T-V** (#/type PTS risk-assessed) will always be lower # than Column D (# assessments ordered) since some will be excluded/released prior to PTS interview.

⁷ **Note:** **column W, X, and Y** = Length of jail stay (LOS) and lower table shows average LOS change up/down month over month (see "Recidivism sheet #5 for details)

⁸ **Note:** column D will almost never match the ACS's count of their MH assessments ordered/ completed due to the way each agency's numbers are tracked.

SMART JUSTICE GRANT - MENTAL HEALTH PR BOND PRETRIAL ACTIVITIES SUMMARY #2

Col A	Col B	Col C	Col D	Col E	Col F	Col G	Col H	Col I	Col J	Col K	Col L	Col M	Col N	Col O	Col P	Col Q	Col R	Col S
Months	BETA TESTING PERIOD - Reasons for outcomes for all ordered assessment/not presented to Mag. [from column E on sheet 1] ¹																	
	Attorney refusal	Case deferred	Charges dropped	Competency Concerns	Contested and detained	Court plea/disp	Current MH Bond	Declined assessment	Dry writ release	Exc. per CJ criteria	Homeless/no reference	Other	Other PR Bond	Posted Bond	Reference declined residence	Refused to participate	Unable to verify residence/contact	Total
APR '17	0	0	0	1	0	0	0	13	0	43	0	5	0	12	0	2	17	93
MAY '17	2	0	0	8	0	0	1	26	0	29	0	24	0	25	0	14	32	161
JUNE '17	0	1	0	8	0	0	0	14	0	16	0	26	0	17	0	11	42	135
JULY '17	0	0	0	6	1	0	0	16	0	2	1	17	0	14	1	13	27	98
TOTAL	2	1	0	23	1	0	1	69	0	90	1	72	0	68	1	40	118	487

Months	IMPLEMENTATION LAUNCH - Reasons for outcomes for all ordered assessment/not presented to Mag. [from column E on sheet 1] ²																	
	Attorney refusal	Case deferred	Charges dropped	Competency Concerns	Contested and detained	Court plea/disp	Current MH Bond	Declined assessment	Dry writ release	Exc. per CJ criteria	Homeless/no reference	Other	Other PR Bond	Posted Bond	Reference declined residence	Refused to participate	Unable to verify residence/contact	Total ³
AUG '17	0	0	0	4	0	0	0	24	0	13	0	24	0	32	0	9	34	140
SEP '17	0	0	0	11	0	0	0	22	0	5	0	10	0	24	0	10	44	126
OCT '17	0	0	6	4	0	1	0	16	1	15	15	5	3	35	5	9	11	126
NOV '17	0	0	5	5	0	4	0	21	0	13	19	0	2	39	14	6	10	138
DEC '17	0	0	1	5	0	4	0	10	0	2	15	0	4	24	8	6	16	95
JAN '18	0	0	7	4	0	6	0	22	0	6	8	1	1	21	12	10	8	106
FEB '18	0	0	1	7	0	2	0	23	0	5	10	1	3	19	4	10	3	88
MAR '18	0	0	3	3	0	6	0	20	0	14	11	4	8	20	14	19	8	130
APR '18	0	0	2	4	0	5	0	18	0	7	16	0	7	16	18	13	10	116
MAY '18	0	0	3	5	0	6	0	25	0	4	23	3	6	35	21	10	14	155
TOTAL	0	0	28	52	0	34	0	201	1	84	117	48	34	265	96	102	158	1220

Months	IMPLEMENTATION LAUNCH - Percentages of Reasons for outcomes for all ordered assessment/not presented to Mag. [from column E on sheet 1]																	
	Attorney refusal	Case deferred	Charges dropped	Competency Concerns	Contested and detained	Court plea/disp	Current MH Bond	Declined assessment	Dry writ release	Exc. per CJ criteria	Homeless/no reference	Other	Other PR Bond	Posted Bond	Reference declined residence	Refused to participate	Unable to verify residence/contact	
AUG '17	0%	0%	0%	3%	0%	0%	0%	17%	0%	9%	0%	17%	0%	23%	0%	6%	24%	
SEP '17	0%	0%	0%	9%	0%	0%	0%	17%	0%	4%	0%	8%	0%	19%	0%	8%	35%	
OCT '17	0%	0%	5%	3%	0%	1%	0%	13%	1%	12%	12%	4%	2%	28%	4%	7%	9%	
NOV '17	0%	0%	4%	4%	0%	3%	0%	15%	0%	9%	14%	0%	1%	28%	10%	4%	7%	
DEC '17	0%	0%	1%	5%	0%	4%	0%	11%	0%	2%	16%	0%	4%	25%	8%	6%	17%	
JAN '18	0%	0%	7%	4%	0%	6%	0%	21%	0%	6%	8%	1%	1%	20%	11%	9%	8%	
FEB '18	0%	0%	1%	8%	0%	2%	0%	26%	0%	6%	11%	1%	3%	22%	5%	11%	3%	
MAR '18	0%	0%	2%	2%	0%	5%	0%	15%	0%	11%	8%	3%	6%	15%	11%	15%	6%	
APR '18	0%	0%	2%	3%	0%	4%	0%	16%	0%	6%	14%	0%	6%	14%	16%	11%	9%	
MAY '18	0%	0%	2%	3%	0%	4%	0%	16%	0%	3%	15%	2%	4%	23%	14%	6%	9%	
AVG %	0%	0%	2%	4%	0%	3%	0%	17%	0%	7%	10%	4%	3%	22%	8%	9%	13%	

¹ NOTE: The Beta phase Table #1 above contains raw source data figures early in the BETA phase only since we were not yet routinely tracking these (Apr-July 2017), and some of the data points/definitions were only established, added and/or tracked starting only in Aug. 2017 (see Table #2 above)

² NOTE: This data in Table #2 calculates the number/type of "alternate" bond case outcomes/dispositions for those NOT presented to the Magistrate, and then later released by other alternate means

³ NOTE: The monthly alternate disposition totals in Table #2 will generally NOT match the number of bond cases "NOT presented to the Magistrate" for same month (col. E, sheet #1) since many dispositions happen in different month than when they were arrested and booked-in.

⁴ NOTE: November data was re-updated via MH PR Bond List Date instead of Bookin date; December data, like all previous months, will also be based upon MH PR Bond List Date

SMART JUSTICE GRANT - ADAPT RESULTS/RECOMMENDATIONS FROM MH ASSESSMENTS FOR APRIL - DECEMBER 2017

Col A	Col B	Col C	Col D	Col E	Col F	Col G	Col H	Col I	Col J	Col K	Col L	Col M	Col N	Col O	Col P
Months	Assessments Ordered - Results				Assessment Recommendations (LOCs) ³										Outcomes
APRIL-JUNE 2017	Assessments Ordered	Assessment Completed	Assessment not completed ¹	Assessment halted - competency concerns ²	Urgent Care Clinic	IDD Services	Residential Services	Jail-based Psy. Services	Standard Intensive Outpt ⁴	FACT	ACT	FDU	Routine Outpt.	No BH Svs. Indicated	MHPR released & connected to services
	488	297	191	0	0	1	4	13	83	21	28	8	116	21	75
JULY '17	138	101	37	0	1	0	1	7	35	6	6	2	40	3	38
AUG '17	222	165	57	5	0	0	0	0	41	1	3	1	105	12	72
SEP '17	188	143	36	10	0	2	0	14	45	1	4	4	67	5	62
OCT '17	192	134	52	6	0	2	0	9	49	0	4	1	59	4	59
NOV '17	180	121	53	6	0	1	0	9	34	2	6	2	61	3	46
DEC '17	153	121	29	4	0	1	0	7	41	1	2	1	59	6	46
TOTAL	1561	1082	455	31	1	7	5	59	328	32	53	19	507	54	398

Months	Percentages of Certain Relevant Columns Within Table Above														
	% of Assessments Ordered - Results				% of TOTAL Assessment Recommendations (LOCs)										% Connected
APRIL-JUNE 2017	% Assessments Ordered of MH ID (from Col. C, tab #1)	% of Assessments Completed (Col. C/B)	% Assessments not completed (Col. D/C)	Assessment halted - competency concerns	Urgent Care Clinic	IDD Services	Residential Services	Jail-based Psy. Services	Standard Intensive Outpt ⁴	FACT	ACT	FDU	Routine Outpt	No BH Svs. Indicated	MHPR releasees connected to services
	19.9%	60.9%	39.1%	0.0%	0.0%	0.3%	1.4%	4.4%	28.1%	7.1%	9.5%	2.7%	39.3%	7.1%	100.0%
JULY '17	12.0%	73.2%	26.8%	0.0%	1.0%	0.0%	1.0%	6.9%	34.7%	5.9%	5.9%	2.0%	39.6%	3.0%	100.0%
AUG '17	13.1%	74.3%	25.7%	3.0%	0.0%	0.0%	0.0%	0.0%	24.4%	0.6%	1.8%	0.6%	62.5%	7.1%	100.0%
SEP '17	13.1%	76.1%	19.1%	6.6%	0.0%	1.3%	0.0%	9.2%	29.6%	0.7%	2.6%	2.6%	44.1%	3.3%	100.0%
OCT '17	12.6%	69.8%	27.1%	4.5%	0.0%	1.5%	0.0%	6.7%	36.6%	0.0%	3.0%	0.7%	44.0%	3.0%	100.0%
NOV '17	13.4%	67.2%	29.4%	4.8%	0.0%	0.8%	0.0%	7.3%	27.4%	1.6%	4.8%	1.6%	49.2%	2.4%	100.0%
DEC '17	12.9%	79.1%	19.0%	3.3%	0.0%	0.8%	0.0%	5.7%	33.6%	0.8%	1.6%	0.8%	48.4%	4.9%	100.0%
AVG %	13.8%	71.5%	26.6%	3.2%	0.1%	0.7%	0.3%	5.8%	30.6%	2.4%	4.2%	1.6%	46.7%	4.4%	100.0%

Months	Reasons for and Percentage of Assessments Not Completed (Col. D)						
	Client declined	Valid assessment on file	Released before assessment	Refused to present	Competency concerns	TOTAL	% not assessed
AUG '17	31	12	12	2	5	62	27.9%
SEP '17	18	10	6	2	10	46	24.5%
OCT '17	14	11	22	5	6	58	30.2%
NOV '17	20	14	16	3	6	59	32.8%
DEC '17	8	8	9	4	4	33	21.6%
TOTAL	91	55	65	16	31	258	27.4%

Grant Metrics: percentage in Column P/row 11 is a grant metric (at least 95%) of those released are connected to treatment (achieved for YTD and current month).

Column B = number of MH assessments ordered.

Column C = number of MH assessments completed.

Column D = number NOT assessed prior to presentation to Magistrate Court DUE TO (e.g., released, refusal to participate, valid clinical assessment already on file,

¹**Note:** cell D4 in **Table #1** above for the months of Apr.-June 2017 involved protracted, 2-stage CJ history exculsion process (this allowed a larger number to be ordered, but not MH assessed).

²**Note:** **column E** = number of cases where an assessment process was started, but later halted prior to presentation for competency concerns.

³**NOTE:** total count of **Columns F-O** (LOC Rec's) will generally exceed **Column C** (# of F2F assessments) since assessments can result in multiple referral multiple service provider referral recommendations (e.g., SUD plus MH, etc.).

Column P = how many/percent of the MHPR Bond cases released were also connected to treatment.

⁴**Note:** Standard IOP reference applies to all clients needing IOP services level that do not also fit either the FACT, ACT, or FDU category.

⁵**Note:** Table #4 is new and is LOC4/5 ACT/FACT identification/referral data from ACS.

SMART JUSTICE GRANT - ADAPT RESULTS/RECOMMENDATIONS/LOC'S BREAKDOWN FROM MH ASSESSMENTS FOR 2018

Col A	Col B	Col C	Col D	Col E	Col F	Col G	Col H	Col I	Col J	Col K	Col L	Col M	Col N	Col O	Col P
Months	Assessments Ordered - Results				Assessment Recommendations (LOCs) ³										Outcomes
JAN - DEC 2018	Assessments Ordered	Assessment Completed	Assessment not completed ¹	Assessment halted - competency concerns ²	IDD Services	Jail-based Psy. Services	LOC 1S / Standard IOP	LOC 2 / Standard IOP	LOC 3 / Standard IOP	LOC 4 FACT / Standard IOP	LOC 4 ACT / Standard IOP	LOC 5 / Standard IOP	Routine Outpt.	No BH Svs. Indicated	MHPR released & connected to services
JAN '18	164	120	41	5	2	7	31	28	20	4	1	2	13	10	58
FEB '18	140	89	47	5	0	8	28	14	18	2	2	3	4	7	40
MAR '18	174	116	54	3	0	4	50	9	34	2	2	0	5	1	28
APR '18	180	159	40	5	4	8	70	24	32	3	4	4	3	5	46
MAY '18	237	203	66	4	1	8	96	30	44	4	6	0	6	6	70
TOTAL	895	687	248	22	7	35	275	105	148	15	15	9	31	29	242

Months	Percentages of Certain Relevant Columns Within Table Above														
	% of Assessments Ordered - Results				% of TOTAL Assessment Recommendations (LOCs)										% Connected
JAN - DEC 2018	% Assessments Ordered of MH ID (from Col. C, tab #1)	% of Assessments Completed (Col. C/B)	% Assessments not completed (Col. D/C)	Assessment halted - competency concerns	IDD Services	Jail-based Psy. Services	LOC 1S / Standard IOP	LOC 2 / Standard IOP	LOC 3 / Standard IOP	LOC 4 FACT / Standard IOP	LOC 4 ACT / Standard IOP	LOC 5 / Standard IOP	Routine Outpt.	No BH Svs. Indicated	MHPR releases connected to services
JAN '18	12.8%	73.2%	25.0%	4.1%	1.6%	5.7%	25.2%	22.8%	16.3%	3.3%	0.8%	1.6%	10.6%	8.1%	100.0%
FEB '18	11.1%	63.6%	33.6%	5.5%	0.0%	8.8%	30.8%	15.4%	19.8%	2.2%	2.2%	3.3%	4.4%	7.7%	100.0%
MAR '18	13.7%	66.7%	31.0%	2.7%	0.0%	3.6%	45.5%	8.2%	30.9%	1.8%	1.8%	0.0%	4.5%	0.9%	100.0%
APR '18	13.0%	88.3%	22.2%	3.1%	2.5%	4.9%	43.2%	14.8%	19.8%	1.9%	2.5%	2.5%	1.9%	3.1%	100.0%
MAY '18	16.3%	85.7%	27.8%	2.0%	0.5%	3.9%	46.8%	14.6%	21.5%	2.0%	2.9%	0.0%	2.9%	2.9%	100.0%
AVG %	13.4%	75.5%	27.9%	3.5%	0.9%	5.4%	38.3%	15.2%	21.6%	2.2%	2.0%	1.5%	4.9%	4.5%	100.0%

Months	Reasons for and Percentage of Assessments Not Completed (Col. D)					
	Client declined	Valid assessment on file	Released before assessment	Refused to present	Competency concerns	% not assessed
JAN '18	16	12	8	5	5	28.0%
FEB '18	16	15	11	5	5	37.1%
MAR '18	24	18	9	3	3	32.8%
APR '18	17	11	9	3	5	25.0%
MAY '18	23	21	19	3	4	29.5%
TOTAL	96	77	56	19	22	30.5%

Months	LOC 4 [ACT & FACT] & LOC 5 Referrals from ADAPT ⁵				
	Category LOC 4 & 5	Metrocare	IPS	CFGF	Total
JAN '18	LOC 4 ACT	1	0	0	1
	LOC 4 FACT	0	4	0	4
	LOC 5/ST-IOP	1	1	0	2
FEB '18	LOC 4 ACT	2	0	0	2
	LOC 4 FACT	0	2	0	2
	LOC 5/ST-IOP	3	0	0	3
MAR '18	LOC 4 ACT	2	0	0	2
	LOC 4 FACT	0	2	0	2
APR '18	LOC 4 ACT	4	0	0	4
	LOC 4 FACT	0	3	0	3
	LOC 5/ST-IOP	4	0	0	4
MAY '18	LOC 4 ACT	6	0	0	6
	LOC 4 FACT	0	4	0	4

Grant Metrics: percentage in Column P/row 11 is a grant metric (at least 95%) of those released are connected to treatment (achieved for YTD and current month).

Column B = number of MH assessments ordered.

Column C = number of MH assessments completed.

Column D = number NOT assessed prior to presentation to Magistrate Court DUE TO (e.g., released, refusal to participate, valid clinical assessment already on file, assessed in subsequent "reporting" month, unavailable for assessment, etc.). **Third table** above breaks out reasons AND percentages starting in Aug. 2017.

¹**Note:** cell D4 in **Table #1** above for the months of Apr.-June 2017 involved protracted, 2-stage CJ history exclusion process (this allowed a larger number to be ordered, but not MH assessed).

²**Note:** **column E** = number of cases where an assessment process was started, but later halted prior to presentation for competency concerns.

³**NOTE:** total count of **Columns F-O** (LOC Rec's) will generally exceed **Column C** (# of F2F assessments) since assessments can result in multiple referral recommendations (e.g., SUD multiple service provider referral recommendations (e.g., SUD plus MH, etc.).

Column P = how many/percent of the MHPR Bond cases released were also connected to treatment.

⁴**Note:** Standard IOP reference applies to all clients needing IOP services level that do not also fit either the FACT, ACT, or FDU category.

⁵**Note:** Table #4 above is new and reflects LOC4/5 ACT/FACT/ST-IOP referral data from ACS (by service provider/category)

SMART JUSTICE GRANT - MENTAL HEALTH PR BOND LENGTH OF STAY AND RECIDIVISM SUMMARY

Col A	Col B	Col C	Col D	Col E	Col F	Col G	Col H	Col I	Col J	Col K	Col L	Col W	Col X	Col Y	Col Z	Col AA
Length of Stays (for Column C, D and I) and Recidivism Rates of Column C																
Mon./Yr.	MH Screen/ID/Order Actions			Pretrial/Magistrate Release Steps and Actions								Length of Stay [LOS]			Recidivism	
Month	Book-ins	ID-possible MH	MHPR Eligible-Assess Ordered	Not presented to Mag.	Presented to Mag.	Fel Chg.	Misd chg.	Granted	Denied	Rel. by other means	Total releases via Special Processes	Avg Jail Stay of Column C. (days) ¹	Avg Jail Stay of Column D. (days) ²	Avg Jail Stay of Column I. (days) ³	Recidivated Individuals of ID'd (col.C) ⁴	Repeat Bookings of those ID'd (col.C) ⁵
Apr 17-30	2546	489	109	93	16	13	5	15	1	0	11	49	33	4	4	4
May '17	5893	1090	213	179	34	17	27	29	2	3	19	47	24	5	27	31
June '17	5537	874	166	127	39	14	32	31	2	6	17	42	20	8	63	73
July '17	5615	1148	138	92	46	28	35	38	5	3	48	42	23	6	122	148
Aug '17	5784	1698	222	138	84	50	55	72	12	0	41	40	23	5	165	208
Sep '17	5449	1438	188	121	67	45	43	62	5	0	30	42	27	6	190	246
Oct '17	5472	1526	193	129	64	40	46	59	3	0	34	39	20	6	206	282
Nov '17	5203	1347	192	142	50	30	33	46	4	0	25	40	19	5	219	313
Dec '17	5368	1185	148	100	48	40	20	46	2	0	27	40	19	10	212	282
Jan '18	4749	1284	162	95	67	44	38	58	6	3	27	36	19	5	248	360
Feb '18	5465	1261	150	99	51	37	19	40	8	3	10	33	19	7	266	398
Mar '18	5394	1271	175	133	42	20	18	28	13	1	18	30	17	6	408	417
Apr '18	5625	1384	181	128	53	38	25	46	6	1	24	28	19	6	57	85
May '18	5697	1457	243	159	84	44	47	70	14	0	34	22	13	6	157	197
TOTAL	73797	17452	2480	1735	745	460	443	640	83	20	365	530	295	85	2344	3044
														Recidivism	% of Total ID'd	17.4%

Percentages of Specific Relevant Columns Within Table Above														
Mon./Yr.	MH Screen/ID/Order Actions			Pretrial/Magistrate Release Steps and Actions								Length of Stay [LOS]		
MONTHS		% possible MH (of bookings)	% ordered assessed (of MH ID list)	% not presented to Mag. (of eligible)	% presented to Mag. (of eligible)	% fel chg (of col. F)	% misd chg (of col. F)	% granted bond (col. I/F)	% denied bond (col. J/F)	% rel.-other means (col. K/F)	% of MH-ID released via spec. processes (col. L/C)	% Change LOS of Column. C	% Change LOS of Column. D	% Change LOS of Column. I
APR '17		19.2%	22.3%	85.3%	14.7%	81.3%	31.3%	93.8%	6.3%	0.0%	10.1%			
MAY '17		18.5%	19.5%	84.0%	16.0%	50.0%	79.4%	85.3%	5.9%	8.8%	8.9%	-4%	-27%	25%
JUN '17		15.8%	19.0%	76.5%	23.5%	35.9%	82.1%	79.5%	5.1%	15.4%	10.2%	-11%	-17%	60%
JUL '17		20.4%	12.0%	66.7%	33.3%	60.9%	76.1%	82.6%	10.9%	6.5%	34.8%	0%	15%	-25%
AUG '17		29.4%	13.1%	62.2%	37.8%	59.5%	65.5%	85.7%	14.3%	0.0%	18.5%	-5%	0%	-17%
SEP '17		26.4%	13.1%	64.4%	35.6%	67.2%	64.2%	92.5%	7.5%	0.0%	16.0%	5%	17%	20%
OCT '17		27.9%	12.6%	66.8%	33.2%	62.5%	71.9%	92.2%	4.7%	0.0%	17.6%	-7%	-26%	0%
Nov '17		25.9%	14.3%	74.0%	26.0%	60.0%	66.0%	92.0%	8.0%	0.0%	13.0%	3%	-5%	-17%
Dec '17		22.1%	12.5%	67.6%	32.4%	83.3%	41.7%	95.8%	4.2%	0.0%	18.2%	0%	0%	100%
Jan '18		27.0%	12.6%	58.6%	41.4%	65.7%	56.7%	86.6%	9.0%	4.5%	16.7%	-10%	0%	-50%
Feb '18		23.1%	11.9%	66.0%	34.0%	72.5%	37.3%	78.4%	15.7%	5.9%	6.7%	-8%	0%	40%
Mar '18		23.6%	13.8%	76.0%	24.0%	47.6%	42.9%	66.7%	31.0%	2.4%	10.3%	-9%	-11%	-14%
Apr '18		24.6%	13.1%	70.7%	29.3%	71.7%	47.2%	86.8%	11.3%	1.9%	13.3%	-7%	12%	0%
May '18		25.6%	16.7%	65.4%	34.6%	52.4%	56.0%	83.3%	16.7%	0.0%	14.0%	-21%	-32%	0%
AVG %		23.5%	14.7%	70.3%	29.7%	62.2%	58.4%	85.8%	10.7%	3.2%	14.9%	-5.7%	-5.6%	9.4%

¹ **Note:** column W= Length of jail stay (LOS) for those ID'd as MH (Column C) & lower table shows average LOS change up/down month over month.

² **Note:** column X = Length of jail stay (LOS) for those ID'd as MH/ordered assessed (col. D) with lower table showing ave. LOS change up/down)

³ **Note:** column Y = Length of jail stay (LOS) for those assessed/released (col. E) and lower table showing ave. LOS change up/down)

⁴ **Note:** column Z = number of persons booking back in by month of Col. C (does NOT count the first booking, only subsequent)

⁵ **Note:** column AA = number of bookings back in by month (of col. C) for those persons reported in col. Z

Meadows Mental Health Policy Institute

Caruth Community Update — 2nd Quarter 2018

The Caruth Smart Justice Planning Grant Phase II proposal was submitted to the W.W. Caruth, Jr. Foundation at the Communities Foundation of Texas on July 15, 2016.¹ Implementation of the Caruth Smart Justice Project (Caruth Project) began in January 2017. The project is aligned with and supports the local behavioral health system and its efforts to meet the needs of residents with mental health issues in North Texas. Midway through Year 2 of the grant, the new services and revised processes we developed during the planning phase of the Caruth Project are being implemented for each of the points of contact within the Sequential Intercept Model.

The Caruth Project has developed an active collaboration with community providers and stakeholders to meet the goals of reducing the number of people with mental health needs who are detained in the Dallas County Jail and to increase access to high quality community based treatment. We have formal agreements with the Dallas Police Department (DPD), the Dallas Fire and Rescue Department (DFRD), Parkland Health and Hospital System (Parkland), and community providers of Assertive Community Treatment (ACT) and Forensic Assertive Community Treatment (FACT). Through the Dallas County Criminal Justice Department (DCCJD) and the Dallas County Sheriff's Department, Dallas County has collaborated with Parkland's Jail Health staff to transform screening and assessment procedures to ensure that everyone is screened for mental health needs upon admission to the jail. The screening protocol connects individuals who need a full assessment to existing resources and initiates the parallel process of assessing risk to determine eligibility for release and developing a supervision plan that includes treatment. These changes have resulted in more people being released on no-cost personal recognizance bonds and connected to community-based treatment and appropriate court supervision. Parkland has also partnered with the Rapid Integrated Group Healthcare Team Care (RIGHT Care) units by hiring and training the clinicians for the RIGHT Care units and agreeing to provide the mental health clinicians for the clinical support for 911 dispatch. We wish to thank our partners for their continued support and energy in advancing the Caruth Smart Justice Project.

¹ On October 5, 2016, the trustees of the W.W. Caruth Foundation at the Communities Foundation of Texas approved the grant proposal, which enables the Meadows Mental Health Policy Institute to work closely with Dallas County, the City of Dallas, and a broad array of partners to implement the Dallas County Smart Justice Project.

Intercept 1 (Law Enforcement)

The multidisciplinary response units, called Rapid Integrated Group Healthcare Team Care (RIGHT Care), which are critical to reducing the burden on law enforcement in responding to 911 mental health calls, began an observational launch from November 29, 2017, through December 18, 2017. At the end of the observational period, leadership teams reviewed the performance of the RIGHT Care units, completed case reviews of individuals served, and used this feedback to make adjustments before the full launch of the program. In January 2018, the Dallas City Council approved the Parkland contract change to implement RIGHT Care units, and the project was launched that month. Since then, overtime and substitute staff have been hired and trained. Partnerships between the City of Dallas, Parkland Health & Hospital System (Parkland), Integrated Psychotherapeutic Services (IPS), Transicare, and others have been critical to the successful launch of the RIGHT Care program. In the first 120 days of deployment, RIGHT Care had 674 total interactions with individuals; 278 interactions resulted in diverting these individuals from arrest or involuntary hospitalization and, instead, connecting them to treatment or services. Linkages with care included options like community treatment, transportation to a home or family member's home, and referral to Assertive Community Treatment.

In a preliminary analysis on call data provided by the DPD, Parkland, and the DFR for the first 120 days of RIGHT Care deployment, we found:

- There were 674 total interactions with individuals.
 - The team interacted with 558 unique individuals.
 - The team responded to 553 requests, including calls for service and referrals.
 - One hundred and twenty-one (121) interactions involved non-crisis follow-up care by the team (follow-up care is defined as either subsequent phone calls or an in-person visit).
- Twenty-two (22) interactions resulted in a traditional law enforcement response.
 - Fourteen (14) arrests were for previous warrants.
 - Eight (8) arrests were for an offense on-scene.
- Two hundred and seventy-eight (278) interactions resulted in linkages with care, including the following highlights:
 - Fifty-six (56) individuals were taken to an outpatient clinic.
 - Twenty-six (26) individuals were taken to a psychiatric facility via RIGHT Care or a family member.
 - Thirty-four (34) individuals were transported to a medical hospital by an ambulance.
 - Thirty-one (31) individuals were immediately connected to housing resources.
 - Ten (10) individuals were transported to their own home or to a family member's home.

- Eight (8) individuals were linked to Assertive Community Treatment (ACT).
- One (1) individual was linked to ADAPT Mobile Crisis Services.
- One hundred and twelve (112) individuals were provided with other resources and referrals.
- There were 120 total diversions (a subset of the numbers provided above), including:
 - Eighty-five (85) diversions to outpatient care rather than the hospitalization that would have occurred without the RIGHT Care intervention; and
 - Thirty-five (35) jail diversions, where the behavior constituted low-level criminal behavior, such as trespass or disorderly conduct, and the person was linked to treatment rather than arrested.

Intercept 2 (Initial Detention/Initial Court Hearings) / Intercept 3 (Jails/Courts) / Intercept 4 (Re-Entry)

The three work groups within the Dallas County Criminal Justice Department (DCCJD), each led by a criminal court judge, are completing key tasks flagged for improvement during the initial launch of processes for identifying, assessing, and supervising individuals with mental health needs in the jail that began April 17, 2017, and ended in August 2017. Full implementation was launched on August 14, 2017, and progress continues towards project goals.

DCCJD staff have developed internal data tracking tools to monitor program activities and performance outcomes; tracking tools are undergoing continual revisions to better reflect the measurement needs of the project. We recently gained access to data on the recidivism rates of individuals who were booked in at the jail. Highlights of program activity and performance data for the period of April 17, 2017, through April 2018 are as follows:

- 68,100 defendants booked into the jail were screened for mental health needs.
- 15,995 of these defendants screened positive for possible mental health needs.
- 2,237 of the 15,995 passed initial screening and were court-ordered for assessment.
- 661 of eligible defendants were recommended for release on a personal bond.
- 570 of those recommended for release were granted a personal bond release with conditions that included treatment and supervision by pretrial services staff.

Since mid-November 2017, when the Caruth Project formally began placing defendants released from jail into services, the DCCJD has worked to streamline the referral process with the North Texas Behavioral Health Authority (NTBHA), arranging regular calls to discuss issues with level of care approval, provider hand-offs, criminogenic risk assessment distribution, and other related items. In May 2018, Institute staff, DCCJD staff, Loopback, NTBHA, and Adapt Community Solutions took part in two days of meetings to discuss these issues in more detail as

well as to ensure that individuals placed with the Caruth-funded teams are tracked appropriately over time.

Intercept 5 (Community Corrections and Services)

We have identified four community treatment providers that are able to provide the most appropriate services for Caruth Project service expansion: Metrocare Services (two ACT teams), Integrated Psychotherapeutic Services (IPS) (one FACT team), Transicare (one FACT team), and Child and Family Guidance Center (one ACT team). This reflects a recent change in that IPS and Transicare have separated their combined FACT team to form two separate FACT teams, which will increase our ACT and FACT team total to five. Contracts were finalized with these providers in July 2017 and services began in November 2017. During November, an initial cohort of 27 people who were released from the jail were enrolled in FACT services. All 27 were identified and assessed through the new processes being implemented through the Caruth Project, and are being supervised by the specialized pre-trial officers provided through project funding. Since our last report update in December 2017, a subset of 18 Caruth Project clients from the jail who were assessed for criminogenic risk through the Ohio Risk Assessment System Pretrial Assessment Tool (ORAS-PAT) have been placed into one of the four ACT or FACT teams. In addition, the four teams are receiving other clients from the jail and other referral pools. Currently, all four teams are serving a combined total of 363 individuals.

Formal written reports of the baseline fidelity reviews were drafted to provide each of the four community treatment teams with a better sense of their strengths and opportunities for improvement. In February 2018, Drs. Mathias and Zahniser with MMHPI met with each ACT team to provide feedback and answer questions related to the fidelity review. In March 2018, Dr. Skeem, our co-investigator of the evaluation of the Caruth Project and an expert in the risk-need-responsivity model used in FACT, joined Dr. Zahniser and Dr. Mathias to provide feedback to the FACT team. Additionally in March 2018, Dr. Mathias worked with each team to develop tailored implementation plans that incorporated the recommendations and feedback documented in each team's fidelity review report. Opportunities like these reviews create a foundation to help providers transform the behavioral health system in Dallas County beyond the Caruth Project's efforts and into a system that fully embraces evidence-based and best practices.

Real-Time Information Systems: Loopback Analytics Partnership Across All Five Intercepts

Loopback Analytics (Loopback) has worked closely with MMHPI, Dallas Fort Worth Hospital Council Foundation (DFWHC), NTBHA, and several hospital systems to acquire necessary data sharing agreements and secure data feeds to create early identification and referral

to treatment for individuals in the Caruth target population. NTBHA agreed to provide its data to Loopback via data sharing agreements in July 2017 and has been transferring data to Loopback to integrate with hospital system data since August 2017. Texas Health Resources (THR) signed data sharing agreements in January 2018 and began transferring data to the Loopback platform in April, while Parkland completed data sharing agreements in February and began transferring data in April. Additionally, Methodist Health System completed its data sharing agreements in late May and is beginning the data integration process now; data sharing agreements are currently in the works with the UT Southwestern Medical Center and with Baylor.

The real-time streaming data from THR and Parkland are being augmented with two years of historical patient data made available by contract from the Dallas-Fort Worth Hospital Council. This hospital data set and mental health encounter data from NTBHA form the basis for the cohort notifications that were deployed at THR and Parkland emergency departments (EDs) in April. During the month of May, the number of current and past NTBHA consumers with ED encounters ranged from 9% to 13% of total ED encounters at Parkland and 1% to 5% of ED encounters at the four participating THR hospitals.

With the combination of THR, Parkland, and NTBHA real-time and historical data feeds, Loopback has developed a series of analytic dashboards that enable the Caruth Project to more precisely identify and target individuals who meet established state criteria for ACT or FACT services. In addition to the state's definition of Level of Care 4 criteria, which qualifies an individual for ACT or FACT, the dashboard allows the program to identify candidates for ACT and FACT based on a detailed analysis of utilization patterns, diagnoses, and social determinants of health, with the objective of assigning candidates to the appropriate treatment level.

Preliminary analysis of the three shared data feeds has shown how this type of information sharing may be able to sustain itself beyond our Caruth Project efforts. Loopback has the ability to demonstrate how near real-time health information can depict patterns that can help the crisis system identify where clients slip between the cracks in the continuum of care, the impact of multiple medication prescriptions on clients trapped in the cycle of frequent utilization at different EDs, and how contact with an Assertive Community Treatment team can significantly reduce a person's number of ED visits. The capability of the data sharing platform to predict trends in the Dallas Metroplex's crisis system can serve as a model for all local crisis and treatment providers.

**Department of Criminal Justice
FY2018 SAMHSA Grant Project**

	Oct.	Nov.	Dec.	Jan.	Feb.	Mar.	Apr.	May	June	July	Aug.	Sep.	FY2018 Total	FY2017 Total	FY2016 Total
Number of New Admissions	4	2	7	2	2	6	3	5	5				36	44	33
Number of Successful Completions	3	0	1	3	5	1	2	4	0				19	36	24
Number of Unsuccessful Completions	0	0	0	3	0	3	1	1	2				10	10	9
Average Days in Jail from Referral to Admission	12	9	6	5	8	6	6	9	9				7	7	4
Number of New Admissions on ELM	2	2	3	2	1	4	1	4	2				21	37	12
Program Referral Follow-Ups by Type (running total per grant year)															
Court Program Graduate													0	2	7
Active In Court Program													14	5	2
Active In Treatment at Nexus													5	0	0
In Jail													2	3	3
Re-Arrested and Released to Community													3	14	12
Re-Arrested and Released to Further Treatment													4	6	0
Released to TDCJ or State Jail													1	6	5
Active Warrant													5	7	3



Behavioral Health Steering Committee

530 Fund Sub-Committee

Attendees

Shenna Oriabure, Keta Dickerson, Ruth Kaiser, Judge Kristin Wade, Serena McNair, Julie Turnbull, Bryan Smith, Leah Gamble, Judge Lela Mays, Judge Jennifer Bennett

Review/Approval of Minutes

Leah Gamble called the meeting to order at 9:42am and asked for a motion to approve the minutes. Judge Wade made a motion to approve the minutes. Ruth Kaiser seconded the motion and the minutes were accepted by the group.

530 Fund Balance and Update

An update of the 530 Fund Balance was provided. Currently the balance for the Felony account (4020) is \$114,288.87; the Misdemeanor account (4031) is \$71,482.34 for a total of \$185,771.21. Keta Dickerson presented the 530 Fund FY 18 Expenditures. Shenna Oriabure presented 530 specialized drug testing utilization thus far for FY18. Drug testing utilization is down this fiscal year and all certified specialty courts were encouraged to utilize the service. A nurse panel has been added as an option for specialized drug testing.

Request for Funding

PRIDE Court submitted a request for funding. The request was for \$315 (\$15 x 21 participants) for a year end program, utilizing the incentives line item for FY 18. Judge Wade moved to approve the request. Keta Dickerson seconded the motion. The motion was approved by the group. STAC Court submitted a request for funding. The request was for \$2,190 (\$15 X 146 participants) for program incentives, utilizing the incentives line item for FY 18. Keta moved to approve the request. Leah Gamble seconded the motion. The motion was approved by the group. Keta noted STAC's maximum capacity is not 500 due to change in criteria and other factors. STAC court will update court capacity information.

Courts Authorized to Utilize 530 Monies

There has been some discussion regarding which courts may utilize 530 funding. Leah Gamble reported the Civil DA is researching the matter. The findings will be reported back to the group. Keta Dickerson advised the diversity among specialty courts was not present when the financial provision for the 530 statute was enacted. The Office of Court Administration suggested amending the statute to include financial provision for all specialty courts. Keta will bring up the topic during a May meeting in Austin.

530 Sub Committee

Minutes from March 14, 2018

Page 1 of 2

Judicial Overview of Specialty Courts, Programs, and Dockets

Judge Mays recommended having some training for judges of specialty courts to be prepared for the OOG mandates beginning in January 2019. Examples given were for a meeting, luncheon, or in-house training. Judge Wade recommended hosting a representative from the Governor's Office to speak. Keta Dickerson stated courts that receive grants from the OOG should have received benchmark data for the 2017 grant year. Keta also announced there are monies available for commercially exploited persons. Judge Wade began the discussion on how people are sorted into programs. Judge Wade stated there is a "big gap in our system" and it would be beneficial to have an expert on specialty court program for referral purposes. Judge Wade stated there should be better communication between the specialty courts to improve and not duplicate efforts. Julie Turnbull will check to see if the assistant district attorneys can add a statistic on monthly reporting related to specialty court referrals. There was discussion regarding impending specialty dockets and specialty programs and the effects of such programs on the existing certified specialty court programs. Specifically the effects of the emerging programs have on participation and resources.

2018 NADCP Planning

Judge Bennett requested she be permitted to submit an application and receive a 530 stipend although the application submission deadline passed. Judge Wade moved the committee approve the 530 stipend request for Judge Bennett (DDC) in a reimbursement capacity. The motion was seconded by Julie Turnbull. The group approved the motion. Judge Mays suggested a magistrate should receive specialty court training sponsored by 530 funding; Judge Mays specifically suggested Judge La'Donna Harlan for the relief specialty court judge.

Texas State Office of the Governor Update

Keta Dickerson announced the pilot Ombudsman Program was rolled out prematurely. The program is an avenue in which specialty court participants can file a complaint against a specialty court. The proper waivers and paperwork have not been distributed. Keta advised to reframe from distributing any information related to the Ombudsman program or the compliant process at this time.

Announcements

Leah Gamble advised there is an additional \$31,000 in the current SAMHSA grant to send more women to treatment at Nexus. There is also funding to sponsor some in-house training. Homeward Bound had a soft opening with the Detox Unit operational. Delightful Discussions will resume in April 2018 and cover Best Practices I & II. The group discussed bringing Cathedral of Hope and a NADCP presenter for cultural competence in June and July 2018. NADCP Operational Tune-Up will be in June 2018; participating courts will be STAC, 4-C, and DIVERT. Fresh Start, which is an opportunity for UNT Dallas law students to assist individuals with tickets, is active again.

Adjourn

The meeting was adjourned at 10:53 am and will reconvene on 5/9/18 @9:30am.



Behavioral Health Steering Committee

530 Fund Sub-Committee

Attendees

Shenna Oriabure, Keta Dickerson, Laura Edmonds, Ruth Kaiser, Judge Kristin Wade, Serena McNair, Julie Turnbull, Bryan Smith, Leah Gamble, Judge Hector Garza, Vickie Rice, Lynn Richardson

Review/Approval of Minutes

Shenna Oriabure called the meeting to order at 9:37am and asked for a motion to approve the minutes. Ruth Kaiser made a motion to approve the minutes. Leah Gamble seconded the motion and the minutes were accepted by the group.

530 Fund Balance and Update

An update of the 530 Fund Balance was provided. Currently the balance for the Felony account (4020) is \$110,016.42; the Misdemeanor account (4031) is \$66,891.58 for a total of \$176, 908. Keta Dickerson presented the 530 Fund FY 18 Expenditures.

Drug Testing

Shenna Oriabure presented 530 specialized drug testing utilization thus far for FY18. The total expense for specialized drug testing for the Month of May 2018 was \$204.17. STAC court requested Kratom be added to the list of substances approved for specialized testing. Kratom is not a substance previously contracted with Redwood Laboratories; Redwood does have the ability to conduct the requested test. The Kratom test costs \$75 per test. Discussion was had on testing frequency and need to test the participants' drug of choice. Julie Turnbull suggested group members locate Paul Kerry at the upcoming NADCP Conference and inquire about Kratom and testing. Laura Edmonds moved to add Kratom testing on a case by case basis. The motion was seconded by Judge Wade. The motion was approved by the group. The group wants to monitor utilization and revisit the topic at the next meeting.

Request for Funding

DIVERT Court submitted a request for funding. The request was for \$2,250 (\$15 x 150 participants) for the court's 20th Anniversary, national drug court month, and other special events utilizing the incentives line item for FY 18. Lynn Richardson moved to approve the request. Leah Gamble seconded the motion. The motion was approved by the group.

530 Sub Committee

Minutes from May 9, 2018

Page 1 of 2

2018 NADCP Planning

The registration and hotel expenses for 530 funded conference attendees have been paid. Judge Bennett withdrew her 530 stipend request. Vickie Rice requested the abandoned 530 stipend be used to fund the new OCR public defender at the conference. Vickie advised the new PD will be a hybrid position and will serve in other specialty courts. Lynn Richardson moved to fund the additional individual contingent on conference registration and Dallas County employment by May 29, 2018. Julie Turnbull seconded the motion. The motion was approved by the group. Total funding per participant is not to exceed \$1375. Judge Wade suggested conference attendees be reminded about funding requirements and restrictions. Attendees were reminded to obtain itemized bills and to attend the Texas Association luncheon. Serena McNair stated she was having a meeting with probation officers to go over the specifics of the conference.

Texas State Office of the Governor Update

Keta Dickerson announced the state meeting was postponed. The meeting is still pending a reschedule date. Keta advised there are many changes related to the Governor's Office and specialty courts occurring.

Announcements

Laura Edmonds advised there is approximately \$3,000 in the SAMHSA grant available for training. The monies must be utilized by the end of September 2018. Julie Turnbull suggested the money be used for cultural competency training. Keta Dickerson requested the money be utilized to pay for lunch at the upcoming NADCP Operational Tune-Up. Judge Wade opined using the money for LGBTQ competency training. Leah Gamble requested those interested submit written proposals on how the monies should be utilized. Written proposals should be submitted by mid-June 2018. Lynn Richardson advised May is Mental Health month and special recognition will occur at Commissioners Court on May 15, 2018. Commissioner Daniel will be leading a resolution recognizing mental health courts and the Stepping Up Initiative. Serena McNair requested the committee collectively celebrate ALL specialty courts during the month of May. Lynn Richardson supported Serena's sentiment. Attempts will be made to try and somehow celebrate all certified specialty courts in May 2018 and going forward.

Adjourn

The meeting was adjourned at 10:30 am and will reconvene on 6/11/18 @9:30am.



Crisis Services Project

CSP Total

DY7 CSP Monthly Report_No Graphs(with LCN)

Last Refresh: 6/27/18 at 11:30:20 AM GMT-05:00

	Past Year Avg	2018-01	2018-02	2018-03	2018-04	2018-05	Average:	Sum:
Total Service Episodes:	768	680	646	702	391	455	574.8	2,874
Total Unique CID:	589	672	603	610	328	389	520.4	2,602
Total Unique SID:		671	603	609	328	388	519.8	2,599
% Change to DY 4 by CID		114.09%	102.38%	103.57%	55.69%	66.04%		

Total Encounters by Type:		2018-01	2018-02	2018-03	2018-04	2018-05	Average:	Sum:
Triage		680	646	702	391	455	574.8	2,874
Care Coordination		2,608	2,418	2,770	2,447	3,047	2,658	13,290
F2F Encounter		345	352	384	310	387	355.6	1,778
Sum:		3,633	3,416	3,856	3,148	3,889	3,588.4	17,942

F2F Encounter		2018-01	2018-02	2018-03	2018-04	2018-05	Average:	Sum:
MHPR Bond		166	141	159	173	238	175.4	877
Non-MHPR		179	211	225	137	149	180.2	901
Sum:		345	352	384	310	387	355.6	1,778



Crisis Services Project

Frank Crowley

DY7 CSP Monthly Report_No Graphs(with LCN)

Last Refresh: 6/27/18 at 11:30:20 AM GMT-05:00

	2018-01	2018-02	2018-03	2018-04	2018-05	Average:	Sum:
Service Episodes:	680	646	702	391	455	574.8	2,874

Unique Consumers:	2018-01	2018-02	2018-03	2018-04	2018-05	Average:	Sum:
By N* ID	287	250	255	123	134	209.8	1,049
By LCN	135	128	126	80	104	114.6	573
By Client ID	250	225	229	125	151	196	980
TOTAL Unique Consumers:	672	603	610	328	389	520.4	2,602
TOTAL Unique Consumers as %:	98.82%	93.34%	86.89%	83.89%	85.49%		

Unique F2F:	2018-01	2018-02	2018-03	2018-04	2018-05	Average:	Sum:
By N* ID	115	118	136	87	100	111.2	556
By LCN	56	64	59	46	78	60.6	303
By Client ID	141	123	123	92	130	121.8	609
TOTAL Unique F2F:	312	305	318	225	308	244.67	1,468
TOTAL Unique F2F as %:	90.43%	86.65%	82.81%	72.58%	79.59%		

		Average:	Sum:
F2F Percentages:			

Triage 12	2,599
Recidivism 12-12	453
Recidivism 12-12%	17.43%

Triage 12 w/F2F	1,218
Recidivism 12-12 w/F2F	172
Recidivism 12-12 w/F2F Percentage	14.12%

Forensic Diversion Unit (FDU) Report

	Jan-18	Feb-18	Mar-18	Apr-18	May-18	Jun-18	Jul-18	Aug-18	Sep-18	Oct-18	Nov-18	Dec - 18
Beginning Census	42	47	48	51	53	51						
Number of Referrals Received from CSP												
Adapt	7	16	13	9	7	4						
Metrocare	0		0	0	0	1						
Transicare	0		0	0	0	0						
DA	1		0	0	0	1						
Number of Admissions	8	10	11	9	7	6						
Number Discharged	3	13	8	10	4	4						
Number not admitted due to:												
Client qualifies for ACT	0		1	0	2	0						
Client qualifies for other programs	0	2	0	1	2	1						
Client didn't meet level of need required	0	3	1	2	4	0						
Other reasons	0	2	1	1	0	3						
Average Service Utilization:												
Average hours seen	9.03	49.05	13.51	12.65	12.82	10.72						
Encounter Breakdown:												
Face to Face	269	293.53	338	541.25	539.25	524						
Service Coordination	676	692	798	542.25	541.25	522						
Number of clients accessing:												
Emergency Room (medical)	2	2	0	1	1	2						
23-hour observation (psych)		1	0	0	2	1						
Inpatient (med/ psych)	3		0	0	0	0						
Jail book-in	0		1	2	3	1						
Reasons for Discharge:												
Graduate		1	2	2	0	0						
Client Disengagement		7	3	1	3	3						
Extended Jail stay (case-by-case basis)	3	2	2	4	1	3						
Other Intervening factors		3	1	1	3	1						
End of Month Stats:												
Number of Active FDU clients end of month	47	44	41	46	42	43						
Number of Unique Consumers	47	48	51	53	51	51						
# of clients waiting to be released from jail	9	11	10	8	3	8						
Average Length of stay on FDU (month)	6.67	6.22	5.31	4.48	4.54	4.6						
Maximum Census	46	46	46	46	46	46						

the consumers on the "waiting" list are being actively seen in jail until release

Transicare Reporting

Crisis Services Project

	2017-10	2017-11	2017-12	2018-01	2018-02	2018-03	2018-04	2018-05	TOTAL
Beginning Census	138	137	123	132	118	105	95	104	
Referrals	74	67	47	46	53	69	60	85	501
Admissions									
Referred Admitted	34	25	21	20	14	19	27	33	193
No Admit Client Refusal	0	1	1	0	0	3	3	1	9
No Admit Criteria	5	3	1	1	3	2	0	1	16
No Admit Structural	3	2	3	5	2	12	10	20	57
Pending	32	36	21	20	34	33	20	30	226
<i>Prior Pending</i>									
Pending Admitted	16	5	11	23	10	12	16	12	105
No Admit Client Refusal	2	3	1	3	0	0	0	1	10
No Admit Criteria	1	3	1	3	3	11	4	0	26
No Admit Structural	19	17	12	5	7	17	8	4	89
Total Admissions	50	30	32	43	24	31	43	45	298
Discharges									
Success Transfer	7	7	5	3	9	9	9	4	53
DC Midterm Disengage	19	14	9	16	12	10	6	9	95
DC Rapid Disengage	13	14	4	23	12	13	14	13	106
DC Structural	12	9	5	15	4	9	5	8	67
Total Discharged	51	44	23	57	37	41	34	34	321
Active End Of Month	137	123	132	118	105	95	104	115	
Outcome Data									
<i>Terrell State Hospital Linkages</i>									
≤7 Connect To Prescriber	4	4	2	10	5	4	5	7	41
Missed ≤7 Day Connect	5	2	4	3	1	4	3	1	23
≤30 Connect To Prescriber	4	4	2	10	5	4	5	7	41
Missed ≤30 Day Connect	5	2	4	3	1	4	3	1	23
Total Missed Metric	5	2	4	3	1	4	3	1	23
Total Released	9	6	6	13	6	8	8	8	64
Cummulative ≤7 Connect %	44.4%	53.3%	47.6%	58.8%	62.5%	60.4%	60.7%	64.1%	64.1%
Cummulative ≤30 Connect %	44.4%	53.3%	47.6%	58.8%	62.5%	60.4%	60.7%	64.1%	64.1%
Missed Metric	55.6%	46.7%	52.4%	41.2%	37.5%	39.6%	39.3%	35.9%	35.9%
<i>Unduplicated Served</i>									
Monthly Unduplicated	204	189	174	182	159	164	156	168	
DSRIP YTD Unduplicated Served	204	393	567	749	908	1072	1228	1396	1396
Encounter Data									
F2F Encounter	1113	988	755	1008	960	1043	1020	1112	7999
Care Coord	110	77	62	66	71	77	72	60	595
Total	1223	1065	817	1074	1031	1120	1092	1172	8594

Jail Competency Stats 2018												
	Jan	Feb	March	April	May	June	July	Aug	Sept	Oct	Nov	Dec
Active												
New Evals - Incompetent	61	45	63	50	50	42						
Waiting for the hospital - End of month	132	133	134	137	129	148						
Maximum Secure Facility	72	69	65	68	75	80						
Non-Maximum Secure Facility	60	64	69	69	54	68						
Returned to jail from the hospital	22	36	28	21	30	28						
Closed												
New Evals - Competent	37	35	40	60	34	43						
Admitted to the state hospital	35	36	38	47	41	42						
Maximum Secure Facility	6	8	5	4	1	6						
Non-Maximum Secure Facility	29	28	33	43	40	36						
Total Competency Evaluations Completed	98	80	103	110	84	85						
Average Wait Times												
Non-Maximum Secure Hospital -- Males							69 days					
Non-Maximum Secure Hospital -- Females							38 days					
Maximum Secure Hospital: Article 17.032(a) charges -- Males							386 days					
Maximum Secure Hospital: Article 17.032(a) charges -- Females							97 days					
Maximum Secure Hospital: NGRI -- Males							NGRI cases will now take priority for admission to Vernon State Hospital. Expected admission time is < 21 days					
Maximum Secure Hospital: NGRI -- Females												
*Note: All individuals who are found Not Guilty by Reason of Insanity (NGRI) or found incompetent to stand trial with an offense listed in Article 17.032(a) of the Code of Criminal Procedure must be sent to the maximum-secure hospital in Vernon. All wait times are approximate.												

2018

Unique Individuals

365

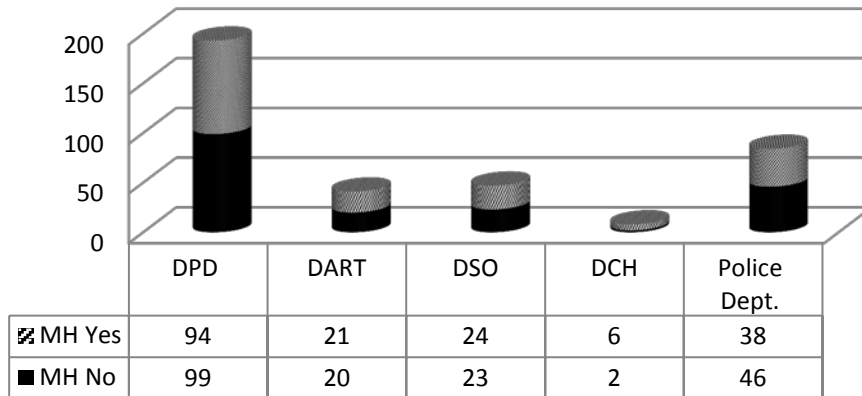
Days In Jail

13,896

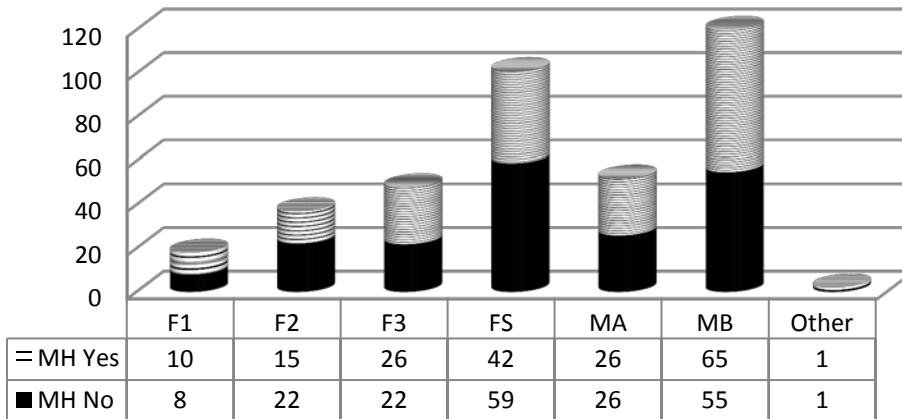
Average Number of Days in Jail

36.76

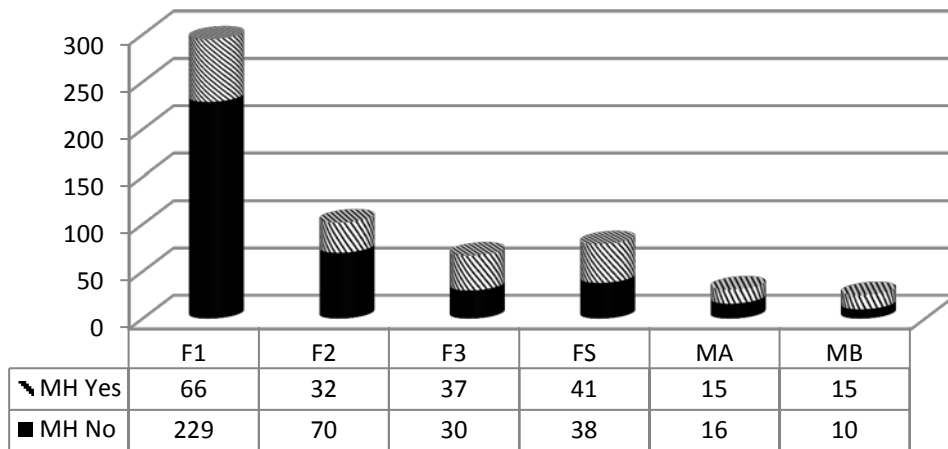
Arresting Agency



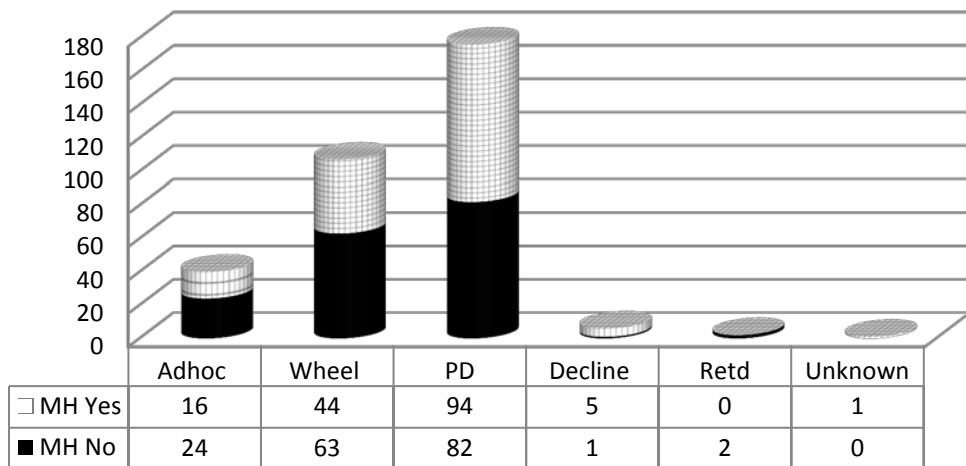
Degree of Offense



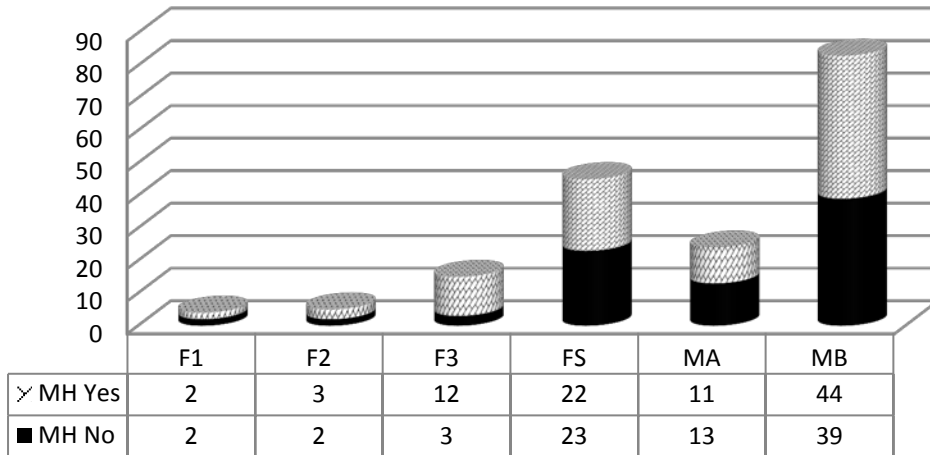
Avg. Days in Jail



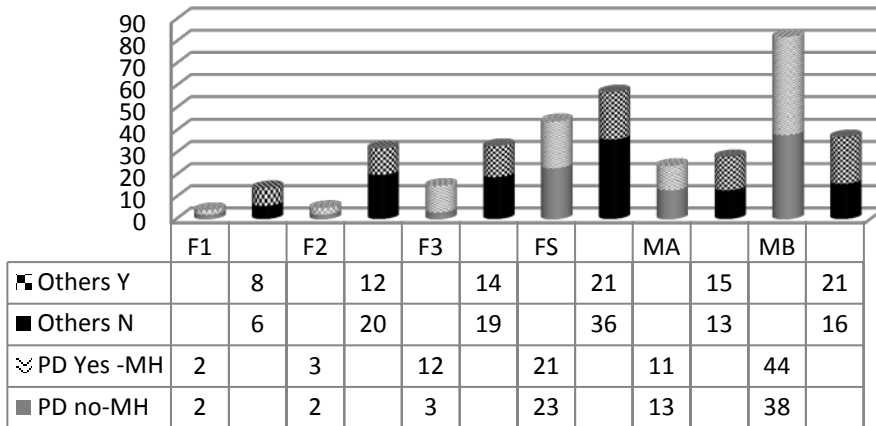
Attorney Type



PD Degree of Offense



Avg. Days in Jail Attorney Type



2018

Unique Individuals

359

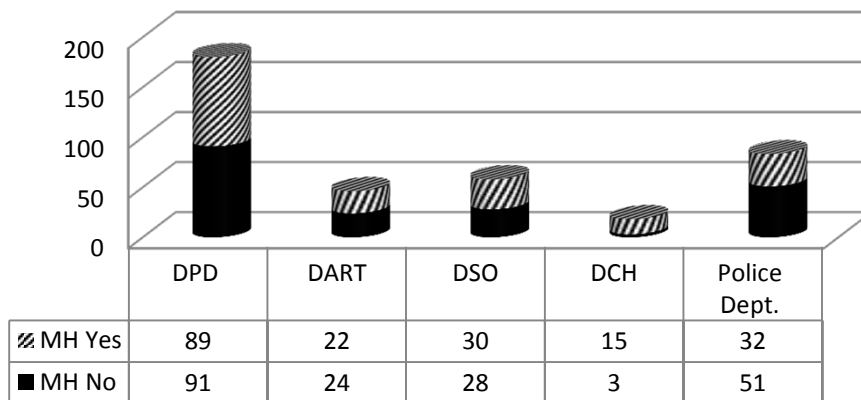
Days In Jail

16,828

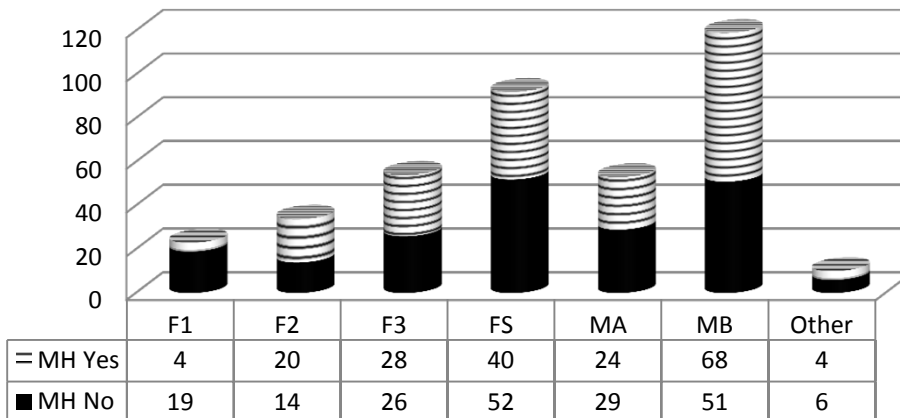
Average Number of Days in Jail

43.70

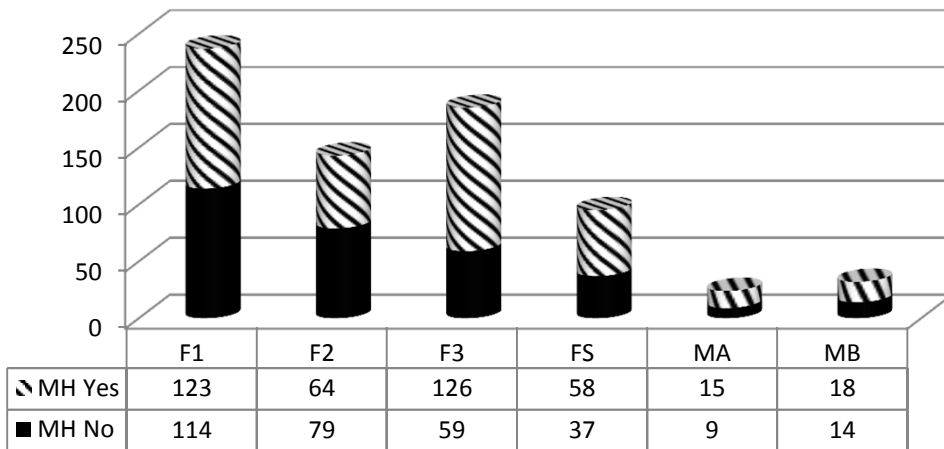
Arresting Agency



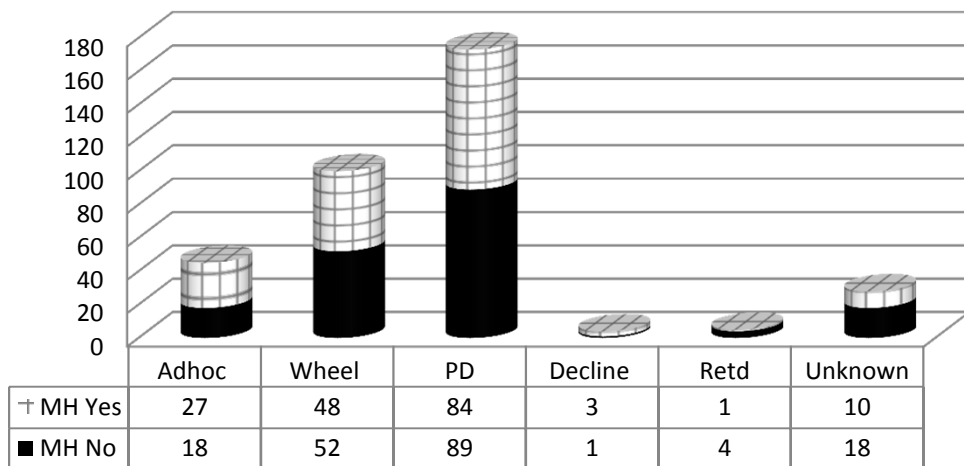
Degree of Offense



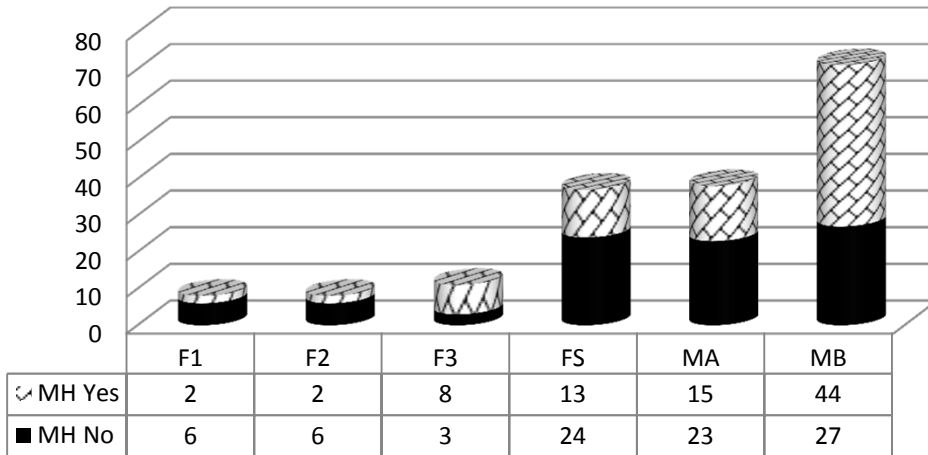
Avg. Days in Jail



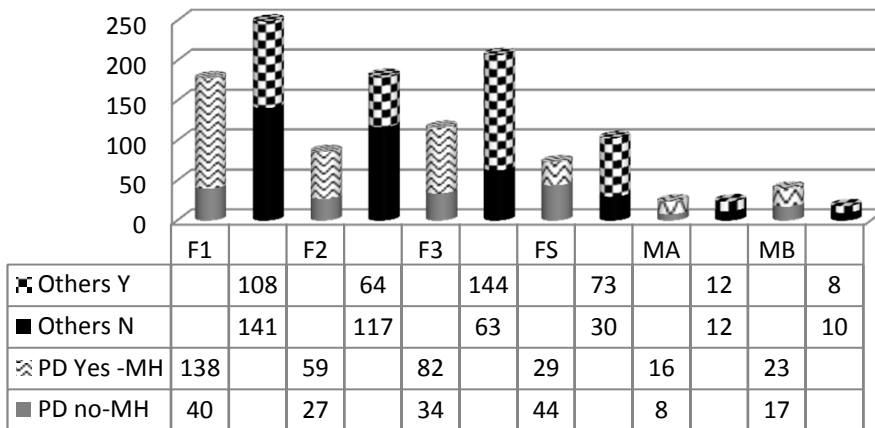
Attorney Type



PD Degree of Offense



Avg. Days in Jail Attorney Type



Monthly JIMI/STELLA Jail Mental Health Flag Report

2017 TOTALS

	Total Bookins	Total Unique Individuals Flagged for Mental Health	Mental Health Flag Categories:	NorthStar ID	NTBHA ID	TLETS Match	PAP Flag	MH AIS Flag
YEARLY 2017 TOTAL	66,154	31,849		11,324	4,028	14,787	3,127	22,826
			Percentages	35.56%	12.65%	46.43%	9.82%	71.67%

2018 TOTALS

MONTH	Total Bookins	Total Unique Individuals Flagged for Mental Health	Mental Health Flag Categories:	NorthStar ID	NTBHA ID	TLETS Match	PAP Flag	MH AIS Flag
Jan-18	5,318	3,349		966	525	1,368	355	2109
Feb-18	4,715	2,992		927	517	1,299	333	1920
			Percentages	30.98%	17.28%	41.98%	11.13%	64.17%
Mar-18	5,465	3,449		967	555	1,262	401	2,169
			Percentages	28.04%	16.09%	36.59%	11.63%	62.89%
Apr-18	5,394	3,406		1,384	531	1,463	240	2,183
			Percentages	40.63%	15.59%	42.95%	7.05%	64.09%
May-18	5,625	3,607		1,075	678	1,537	387	2,260
			Percentages	29.80%	18.80%	42.61%	10.73%	62.66%
Jun-18	5,697	3,539		1,092	854	1,440	356	2,133
			Percentages	30.86%	24.13%	40.69%	10.06%	60.27%

***Note:** Data listed above is reflective of unique individuals who receive at least one mental health flag from one of the identified categories. Individuals may be flagged in more than one category. Percentages above are indicative of that specific mental health flag category only.

Mental Health Flag Categories Explained

NorthStar ID:	Individuals who have an identified service utilization history and service ID from the previous mental health Northstar system
NTBHA ID:	Individuals who have an identified service utilization and service ID from the current mental health NTBHA system
TLETS Match:	Texas Law Enforcement Telecommunications System, Flags sent from DPS that shows individuals who have any history of state-paid MH service
PAP Flag:	Parkland Jail Health Psychological Assessment Program
MH AIS Flag:	Individuals flagged for mental health concerns through the bookin process (from the gold form)

HARRY INGRAM			FY2018 ATLAS STATISTICS										203/HAWTHORNE				
MONTH	BEGINNING # OF PENDING CASES	+NEW CASES RECEIVED THIS MONTH	=TOTAL CASES	TBJ	TBC	PLEAS	REV	GRADUATES	PROBATION MODIFICATIONS	DISMISSALS	OTHERS	TOTAL DISPOSITIONS	ENDING # PENDING CASES **	CURRENT ATLAS PARTICIPANTS	CURRENT PARTICIPANTS IN CUSTODY	FORMER ATLAS PARTICIPANTS	BOND
April	47	0	47	0	0	0	0	0	2	0	0	2	45	26	0	0	26

HARRY INGRAM			FY2018 MISDEMEANOR MENTAL HEALTH COURT STATS										CCCAP1/WADE	
MONTH	BEGINNING # OF PENDING CASES	Rediverts	+NEW CASES RECEIVED THIS MONTH	=TOTAL CASES	TBJ	TBC	PLEAS	DISMISSAL	OTHER	TOTAL DISPOSITIONS	ENDING # PENDING CASES **	CURRENT PARTICIPANTS	NUMBER OF GRADUATES	BOND** *
April	110	0	4	114	0	0	0	0	0	0	114	22	0	22

HARRY INGRAM			FY2018 S.E.T. STATISTICS										291st				
MONTH	BEGINNING # OF PENDING CASES	+NEW CASES RECEIVED THIS MONTH	=TOTAL CASES	TBJ	TBC	PLEAS	REV	GRADUATES	PROBATION MODIFICATIONS	DISMISSALS	OTHERS	TOTAL DISPOSITIONS	ENDING # PENDING CASES **	CURRENT ATLAS PARTICIPANTS	CURRENT PARTICIPANTS IN CUSTODY	FORMER PARTICIPANTS	BOND
April	52	16	68	0	0	0	0	3	0	0	3	6	62	23	0	0	23

April													FY2018 MHPD STATS									
MONTH	BEGINNING # OF PENDING CASES	+NEW CASES RECEIVED THIS MONTH	=TOTAL CASES	TRIALS	PLEAS	COND. DISM.	REVO-CATION	DISMISSALS	INCOMPETENT	REFERRALS	OTHER COUNSEL APPT.	TOTAL CLOSED										
R. LENOX	218	23	241	0	14	3	1	1	3	0	0	29										
L. TAYLOR	202	15	217	0	5	5	1	0	0	2	3	16										

MALCOM HARDEN			FY2018 FELONY COMPETENCY STATISTICS													
	BEGINNING # OF CASES	NEW CASES THIS MONTH	TBJ	TBC	Alt. Trial Dispos.	PLEAS	REVO-CATIONS	DISMISSALS	PROBATION	COMP. HRG.	EXTENSIONS	CIVIL COMMIT.	MHMR REFERRAL	CONSULTS	OTHER	ENDING # OF PEOPLE IN OCR
April	155	15	0	0	0	2	2	4	0	0	0	0	0	0	1	12

MALCOM HARDEN			FY2018 MISDEMEANOR COMPETENCY STATISTICS													
MONTH	BEGINNING # OF CASES	NEW CASES THIS MONTH	TBJ	TBC	Alt. Trial Dispos.	PLEAS	REVO-CATIONS	DISMISSALS	PROBATION	COMP. HRG.	EXTENSIONS	CIVIL COMMIT.	MHMR REFERRAL	CONSULTS	OTHER	ENDING # OF PEOPLE IN OCR
April	144	30	0	0	0	0	0	29	0	24	1	2	0	0	0	22

April																				MI Court									
MONTH	TOTAL NEW CASES RECEIVED	NEW CLIENTS AT GREEN OAKS	NEW CLIENTS AT MEDICAL CENTER MCKINNEY	NEW CLIENTS AT PARKLAND	NEW CLIENTS AT DALLAS BEHAVIORAL HEALTH	NEW CLIENTS AT GARL AND BEHAVIORAL	NEW CLIENTS AT ZALE LIPSHY	NEW CLIENTS AT SUNDANCE BEHAVIORAL HEALTHCARE	NEW CLIENTS AT HICKORY TRAILS	NEW CLIENTS AT METHUEN DISTRICT RICHARDSON	NEW CLIENTS AT DALLAS PRESBYTERIAN	NEW CLIENTS AT VA	NEW CLIENTS AT WELLB RIDGE	NEW CLIENTS AT TIMBER LAWN	NEW CLIENTS AT GLEN OAKS	PROBABLE CAUSE HEARINGS HELD	NO CONTEST COMMIT	CONTESTED COMMIT	FORCED MEDS HEARING IN COURT										
L. ROBERTS	93	32	1	0	0	28	0	11	0	4	0	0	0	0	17	2	0	8	8										
L. TAYLOR	62	0	0	8	21	3	4	3	21	0	2	0	0	0	0	1	0	4	2										
R. BLACK	44	0	0	0	22	0	0	0	22	0	0	0	0	0	0	4	0	0	0										

RANDA BLACK			MI COURT						*Number of new cases decreased due to increase in 46B cases.									
MONTH	NEW CLIENTS	PROBABLE CAUSE HEARINGS HELD	NO CONTEST COMMIT TO TSH	CONTESTED COMMIT TO TSH	RECOMMENDATIONS	MEDICATION HEARINGS	OUTPATIENT	JURY TRIAL										
April	16	0	2	9	6	14	0	0										

MICHAELA HIMES			MHPR BOND STATS			
MONTH	INITIAL ELIGIBILITY DAILY LIST	MHPR BOND APPOINTMENTS FROM DAILY LIST	MHPR BOND HEARING-GRANTED	MHPR BOND HEARING-DENIED	TOTAL HEARINGS	
April	1385	181	46	6	52	

HARRY INGRAM				FY2018 ATLAS STATISTICS								203/HAWTHORNE					
MONTH	BEGINNING # OF PENDING CASES	+NEW CASES RECEIVED THIS MONTH	=TOTAL CASES	TBJ	TBC	PLEAS	REV	GRADUATES	PROBATION MODIFICATIONS	DISMISSALS	OTHERS	TOTAL DISPOSITIONS	ENDING # PENDING CASES **	CURRENT ATLAS PARTICIPANTS	CURRENT PARTICIPANTS IN CUSTODY	FORMER ATLAS PARTICIPANTS	BOND
May	45	1	46	0	0	0	0	8	0	0	0	8	38	21	0	0	21

HARRY INGRAM		FY2018 MISDEMEANOR MENTAL HEALTH COURT STATS										CCCAP1/WADE		
MONTH	BEGINNING # OF PENDING CASES	Rediverts	+NEW CASES RECEIVED THIS MONTH	=TOTAL CASES	TBJ	TBC	PLEAS	DISMISSAL	OTHER	TOTAL DISPO SITION S	ENDING # PENDIN G CASES **	CURRE NT PARTIC IPANTS	NUMBE R OF GRADU ATES	BOND** *
May	114	0	6	120	0	0	0	3	0	3	117	25	2	25

HARRY INGRAM				FY2018 S.E.T. STATISTICS								291st					
MONTH	BEGINNING # OF PENDING CASES	+NEW CASES RECEIVED THIS MONTH	=TOTAL CASES	TBJ	TBC	PLEAS	REV	GRADUATES	PROBATION MODIFICATIONS	DISMISSALS	OTHERS	TOTAL DISPOSITIONS	ENDING # PENDING CASES **	CURRENT ATLAS PARTICIPANTS	CURRENT PARTICIPANTS IN CUSTODY	FORMER ATLAS PARTICIPANTS	BOND
May	62	7	69	0	0	1	0	2	0	0	3	6	63	18	0	0	18

FY2018 MHPD STATS												
	BEGINNING # OF PENDING CASES	+NEW CASES RECEIVED THIS MONTH	=TOTAL CASES	TRIALS	PLEAS	COND. DISM.	REVO-CATION	DISMISSALS	INCOMPETENT	REFERRALS	OTHER COUNSEL APPT.	TOTAL CLOSED
R. LENOX	212	31	243	0	18	4	0	3	0	0	6	31
L. TAYLOR*												

* Stats not submitted before deadline. PD out of the office.

MALCOM HARDEN				FY2018 FELONY COMPETENCY STATISTICS												
	BEGINNING # OF CASES	NEW CASES THIS MONTH	TBJ	TBC	Alt. Trial Dispos.	PLEAS	REVO-CATIONS	DISMISSALS	PROBATION	COMP. HRG.	EXTENSIONS	CIVIL COMMIT.	MHMR REFERRAL	CONSULTS	OTHER	ENDING # OF PEOPLE IN OCR
May	161	12	0	0	0	3	0	6	1	16	4	4	0	0	14	12

MALCOM HARDEN				FY2018 MISDEMEANOR COMPETENCY STATISTICS												
MONTH	BEGINNING # OF CASES	NEW CASES THIS MONTH	TBJ	TBC	Alt. Trial Dispos.	PLEAS	REVO-CATIONS	DISMISSALS	PROBATION	COMP. HRG.	EXTENSIONS	CIVIL COMMIT.	MHMR REFERRAL	CONSULTS	OTHER	ENDING # OF PEOPLE IN OCR
May	149	47	0	0	0	2	0	22	0	21	8	0	0	0	3	17

May MI Court																			
MONTH	TOTAL NEW CASES RECEIVED	NEW CLIENTS AT GREEN OAKS	NEW CLIENTS AT MEDICAL CENTER MCKINNEY	NEW CLIENTS AT PARKLAND	NEW CLIENTS AT DALLAS BEHAVIORAL HEALTH	NEW CLIENTS AT GARLAND AND BEHAVIORAL	NEW CLIENTS AT ZALE LIPSHY	NEW CLIENTS AT SUNDANCE BEHAVIORAL HEALTHCARE	NEW CLIENTS AT HICKORY TRAILS	NEW CLIENTS AT METHUEN DISTRICT RICHARDSON	NEW CLIENTS AT DALLAS PRESBYTERIAN	NEW CLIENTS AT VA	NEW CLIENTS AT WELLB RIDGE	NEW CLIENTS AT TIMBER LAWN	NEW CLIENTS AT GLEN OAKS	PROBABLE CAUSE HEARINGS HELD	NO CONTEST COMMIT	CONTESTED COMMIT	FORCED MEDS HEARING IN COURT
L. ROBERTS	115	41	4	0	0	33	0	14	0	2	0	0	0	0	21	3	0	6	6
L. TAYLOR	134	0	0	107	7	5	4	1	9	0	1	0	0	0	0	1	1	3	3
R. BLACK	33	0	0	0	25	0	0	0	8	0	0	0	0	0	0	3	0	0	0

RANDA BLACK				MI COURT					*Number of new cases decreased due to increase in 46B cases.										
MONTH	NEW CLIENTS	PROBABLE CAUSE HEARINGS HELD	NO CONTEST COMMIT TO TSH	CONTESTED COMMIT TO TSH	RECOMMENDMENTS	MEDICATION HEARINGS	OUTPATIENT	JURY TRIAL											
May	17	0	2	11	4	18	0	0											

MICHAELA HIMES				MHPR BOND STATS				
	INITIAL ELIGIBILITY DAILY LIST	MHPR BOND APPOINTMENTS FROM DAILY LIST	MHPR BOND HEARING-GRANTED	MHPR BOND HEARING-DENIED	TOTAL HEARINGS			
MONTH								
May	1461	243	70	14	84			

HARRY INGRAM				FY2018 ATLAS STATISTICS								203/HAWTHORNE					
MONTH	BEGINNING # OF PENDING CASES	+NEW CASES RECEIVED THIS MONTH	=TOTAL CASES	TBJ	TBC	PLEAS	REV	GRADUATES	PROBATION MODIFICATIONS	DISMISSALS	OTHERS	TOTAL DISPOSITIONS	ENDING # PENDING CASES **	CURRENT ATLAS PARTICIPANTS	CURRENT PARTICIPANTS IN CUSTODY	FORMER ATLAS PARTICIPANTS	BOND
June	38	0	38	0		0	0	0	1	0	0	1	37	20	0	0	21

HARRY INGRAM		FY2018 MISDEMEANOR MENTAL HEALTH COURT STATS										CCCAP1/WADE		
MONTH	BEGINNING # OF PENDING CASES	Rediverts	+NEW CASES RECEIVED THIS MONTH	=TOTAL CASES	TBJ	TBC	PLEAS	DISMISSAL	OTHER	TOTAL DISPO SITION S	ENDING # PENDIN G CASES **	CURRE NT PARTI CIPANTS	NUMBE R OF GRADU ATES	BOND** *
June	117	0	6	123	0	0	4	0	4	8	115	24	0	24

HARRY INGRAM				FY2018 S.E.T. STATISTICS								291st					
MONTH	BEGINNING # OF PENDING CASES	+NEW CASES RECEIVED THIS MONTH	=TOTAL CASES	TBJ	TBC	PLEAS	REV	GRADUATES	PROBATION MODIFICATIONS	DISMISSALS	OTHERS	TOTAL DISPOSITIONS	ENDING # PENDING CASES **	CURRENT ATLAS PARTICIPANTS	CURRENT PARTICIPANTS IN CUSTODY	FORMER ATLAS PARTICIPANTS	BOND
June	63	10	73	0	0	0	0	4	0	0	6	10	63	18	2	0	16

June FY2018 MHPD STATS												
	BEGINNING # OF PENDING CASES	+NEW CASES RECEIVED THIS MONTH	=TOTAL CASES	TRIALS	PLEAS	COND. DISM.	REVO-CATION	DISMISSALS	INCOMPETENT	REFERRALS	OTHER COUNSEL APPT.	TOTAL CLOSED
R. LENOX	212	21	233	0	9	3	0	0	0	0	7	19
L. TAYLOR	245	11	256	0	3	2	0	0	0	5	2	12

MALCOLM HARDEN FY2018 FELONY COMPETENCY STATISTICS																
	BEGINNING # OF CASES	NEW CASES THIS MONTH	TBJ	TBC	Alt. Trial Dispos.	PLEAS	REVO-CATIONS	DISMISSALS	PROBATION	COMP. HRG.	EXTENSIONS	CIVIL COMMIT.	MHMR REFERRAL	CONSULTS	OTHER	ENDING # OF PEOPLE IN OCR
June	145	7	0	0	0	5	2	6	0	5	1	0	1	0	2	10

RANDALL SCOTT FY2018 MISDEMEANOR COMPETENCY STATISTICS																
MONTH	BEGINNING # OF CASES	NEW CASES THIS MONTH	TBJ	TBC	Alt. Trial Dispos.	PLEAS	REVO-CATION	DISMISSALS	PROBATION	COMP. HRG.	EXTENSIONS	CIVIL COMMIT.	MHMR REFERRAL	CONSULTS	OTHER	ENDING # OF PEOPLE IN OCR
June	169	39	0	0	0	1	0	46	1	28	5	2	1	0	2	22

June MI Court																			
MONTH	TOTAL NEW CASES RECEIVED	NEW CLIENTS AT GREEN OAKS	NEW CLIENTS AT MEDICAL CENTER MCKINNEY	NEW CLIENTS AT PARKLAND	NEW CLIENTS AT DALLAS BEHAVIORAL HEALTH	NEW CLIENTS AT GARLAND BEHAVIORAL	NEW CLIENTS AT ZALE LIPSHY	NEW CLIENTS AT SUNDANCE BEHAVIORAL HEALTHCARE	NEW CLIENTS AT HICKORY TRAILS	NEW CLIENTS AT METHUEN DISTRICT RICHARDSON	NEW CLIENTS AT DALLAS PRESBYTERIAN	NEW CLIENTS AT VA	NEW CLIENTS AT WELLS RIDGE	NEW CLIENTS AT TIMBER LAWN	NEW CLIENTS AT GLEN OAKS	PROBABLE CAUSE HEARINGS HELD	NO CONTEST COMMIT	CONTESTED COMMIT	FORCED MEDS HEARING IN COURT
L. ROBERTS	123	54	9	0	0	33	0	9	0	1	0	0	0	0	17	2	1	5	6
L. TAYLOR	109	0	0	81	14	0	5	0	9	0	0	0	0	0	0	1	0	4	4
R. BLACK	29	0	0	0	13	0	0	0	16	0	0	0	0	0	0	5	0	2	2

RANDA BLACK MI COURT									*Number of new cases decreased due to increase in 46B cases.									
MONTH	NEW CLIENTS	PROBABLE CAUSE HEARINGS HELD	NO CONTEST COMMIT TO TSH	CONTESTED COMMIT TO TSH	RECOMMENDATIONS	MEDICATION HEARINGS	OUTPATIENT	JURY TRIAL										
June	14	0	2	7	4	7	0	0										

MICHAELA HIMES MHPR BOND STATS					
MONTH	INITIAL ELIGIBILITY DAILY LIST	MHPR BOND APPOINTMENTS FROM DAILY LIST	MHPR BOND HEARING GRANTED	MHPR BOND HEARING DENIED	TOTAL HEARINGS
June	1455	214	47	13	60

Outpatient Competency Restoration Monthly Totals

	Jan	Feb	Mar	April	May	June	July	Aug	Sept	Oct	Nov	Dec	2018 Totals	2017 Totals
Beginning of Month	21	21	23	23	22	21	19							
<u>Misdemeanor</u>	10	12	14	14	12	11	10							
Placed in OCR	3	5	7	7	5	3							30	68
Homeless @ admit	2	4	4	4	5	2							21	39
Dispo	1	3	7	9	6	4							30	69
Outpatient to Inpatient	0	1	3	5	4	1							14	24
Abscond	0	1	3	1	0	0							5	11
Restored and Resolved	1	1	1	3	1	2							9	21
Not restored -- Dismissed	0	0	0	0	1	1							2	13
<u>Felony</u>	11	9	9	9	10	10	9							
Placed in OCR	1	4	4	2	2	0							13	35
Homeless @ admit	1	4	2	2	1	0							10	10
Dispo	3	4	4	1	2	1							15	54
Outpatient to Inpatient	1	1	3	0	1	0							6	16
Abscond	1	2	0	0	0	0							3	14
Restored	1	0	1	0	0	1							3	18
Not restored -- Graduated	0	1	0	1	1	0							3	6
End of Month	21	23	23	22	21	19	19	0	0	0	0	0		

DIVERT FY 18

FY2018	Start of Month	New admissions	DAOpt-out	Unsuccessful discharge	Graduates	INS deportation	End of Month
Sept. 17	122	5	0	2	11	0	114
Oct. 17	114	11	0	1	8	0	116
Nov. 17	116	14	0	1	0	0	129
Dec. 17	129	11	0	2	5	0	133
Jan. 18	133	13	0	3	3	0	140
Feb. 18	140	14	0	6	3	0	145
Mar. 18	145	6	0	4	4	0	143
Apr. 18	143	8	1	0	2	0	148
May. 18	148	9	0	1	7	0	149
Jun. 18	149	9	0	2	6	0	150
Jul. 18							
Aug. 18							
total		100	1	22	49	0	

ATLAS Court

FY18	Start of Month	New admissions	DA Opt-out	Unsuccessful discharge	Graduates	End of Month
Sept. 17	22	6	0	0	0	28
Oct. 17	28	7	0	6	0	29
Nov. 17	29	2	0	2	0	29
Dec. 17	29	2	0	3	0	28
Jan. 18	28	5	0	3	2	28
Feb. 18	28	2	0	3	0	27
Mar. 18	27	11	0	2	0	30
Apr. 18	30	2	0	5	0	27
May. 18	27	1	0	3	6	19
Jun. 18	19	1	0	0	0	20
Jul. 18						
Aug. 18						

* Denotes that numbers are slightly lower due to missing data.

DDAC Court

FY18	Start of Month	New admissions	DA Opt-out	Unsuccessful discharge	Graduates	End of Month
Sept. 17	36	6	0	3	9	30
Oct. 17	30	8	0	2	0	36
Nov. 17	36	3	0	2	0	37
Dec. 17	37	3	0	1	5	34
Jan. 18	34	3	0	5	0	32
Feb. 18	32	6	0	2	0	36
Mar. 18	36	4	0	3	10	21
Apr. 18	21	4	0	0	0	25
May-18	25	2	0	2	0	25
Jun. 18	25	2	0	1	0	26
Jul. 18	26	4	0	3	8	19
Aug. 18						

* Denotes that numbers are slightly lower due to missing data.

MMH Court

FY18	Start of Month	New admissions	DA Opt-out	Unsuccessful discharge	Graduates	End of Month
Sept. 17	35	5	0	8	0	32
Oct. 17	32	5	0	3	4	30
Nov. 17	30	2	0	3	0	29
Dec. 17	29	2	0	2	0	29
Jan. 18	29	2	0	0	4	27
Feb. 18	27	3	0	2	3	25
Mar. 18	25	4	0	2	2	17
Apr. 18	17	5	0	0	0	22
May-18	22	0	0	0	2	20
Jun. 18	20	3	0	2	0	21
Jul. 18						
Aug. 18						

STAC COURT

FY18	Start of Month	New Admissions	Unsuccessful discharges*
Sep. 17	138	11	10
Oct. 17	150	14	12
Nov. 17	152	17	5
Dec. 17	143	19	5
Jan. 18	145	19	10
Feb. 18	155	15	4
Mar. 18	139	18	7
Apr. 18	150	15	5
May. 18	152	16	3
Jun. 18	141	14	7
Jul. 18	145		
Aug. 18			

FY18	MH Current	MH admissions	MH discharges
Sep. 17	33	7	2
Oct. 17	34	4	4
Nov. 17	30	2	0
Dec. 17	27	7	1
Jan. 18	30	3	1
Feb. 18	33	5	1
Mar. 18	32	2	2
Apr. 18	32	6	2
May. 18	37	4	2
Jun. 18	38	3	2
Jul. 18			
Aug. 18			

Graduates	End of Month
0	150
0	152
21	143
0	145
0	155
27	139
0	150
0	152
30	141
0	145

Graduates	End of Month
0	34
0	30
5	27
0	30
0	33
5	32
0	32
0	37
4	28
0	31

STAR Court

FY18	Start of Month	New admissions	DA Opt-out	Unsuccessful discharge	Graduates	End of Month
Sept. 17	6	1	0	1	0	6
Oct. 17	6	3	0	0	0	9
Nov. 17	9	1	0	0	0	10
Dec. 17	10	0	0	0	1	9
Jan. 18	9	3	0	0	0	12
Feb. 18	12	0	0	1	1	10
Mar. 18	10	2	0	2	0	10
Apr. 18	10	1	0	1	0	10
May-18	10	2	0	2	0	10
Jun. 18	10	3	0	0	2	11
Jul. 18						
Aug. 18						

* Denotes slightly lower numbers due to incomplete data.