



DALLAS COUNTY
Criminal Justice Department

Behavioral Health Steering Committee
Thursday, November 15, 2018 @ 8:30am

Agenda

1. Welcome and Call to Order
2. Review and approval of minutes from September 2018
3. Caruth Smart Justice Grant Update (*Mike Laughlin/MMHPI*) (pgs.7-13)
4. SAMHSA Update *Laura Edmonds* (No data for this month)
5. 530 Sub Committee* *Laura Edmonds* (pgs.14-15)
6. BHLT & CSP Update *Laura Edmonds/Adapt* (pgs.16-23)
7. Jail Reports
 - Hospital Movement *Janine Capetillo* (pg.24)
 - Homeless Report *Kimberly Rawls* (pgs.25-30)
 - Mental Health Case Matches *Laura Edmonds* (pg.31)
8. Public Defenders Report *Lynn Richardson* (pgs.32-34)
9. District Attorney's Report *Lee Pierson* (pgs.35-36)
10. Provider Reports
 - The Bridge *Kelly Kane* (pg.37)
 - Metrocare *Crystal Garland* (pgs.38-40)
 - IPS Reports *Enrique Morris/Jessica Simmons* (No data received)
11. Problem Solving Courts
 - Outpatient Competency *Janine Capetillo* (pg.41)
 - DIVERT *Keta Dickerson* (pg.42)
12. Specialty Courts CSCD *Serena McNair/Rosa Sandles* (pgs.43-47)
13. Announcements
14. Adjourn

***Action and Discussion Items**

Next Meeting: Thursday, January 17, 2019 @ 8:30 am



DALLAS COUNTY, TEXAS

Minutes of the Behavioral Health Steering Committee (BHSC) Meeting Thursday, September 20, 2018

Call to order and Introductions

Judge Kristin Wade called the meeting to order at 8:40 am. 29 staff and agency representatives/providers attended with names recorded on the meeting sign-in sheet. Introductions were done around the room.

Minutes review and approval

The minutes from the last bi-monthly BHSC meeting held on July 19, 2018 (packet pgs. 2-6), were reviewed with motion and second by Michael J. Laughlin and Harry Ingram, respectively for acceptance with no discussion or corrections. Motion unanimously passed accepting minutes as read without objection.

Judge Kristin Wade rearranged the agenda to allow Michael J. Laughlin to give the Caruth Smart Justice Grant update before the Cultural Competency Training.

Caruth Smart Justice Grant Update (Mike Laughlin-pgs. 7-13): Mike Laughlin stated that on pg.7 from months January to June 2018 under the "Initial MH#" column the total of individuals identified with a mental health condition was 8,113. 1,125 eligible defendants were recommended for release on a personal bond. 288 defendants were granted release on the MH PR bond. From April 2017-June 2018, 18,907 individuals were identified among total bookings with a mental health condition, which is about 24%. 2,693 individuals were considered eligible after completing a criminal justice history review. On pg. 8, 743 individuals were recommended for release and granted a personal bond release with conditions that included treatment and supervision by pretrial services staff from April 2017-July 2018.

He stated pgs. 9-13 show the 2nd quarter update from the Meadows Mental Health Policy Institute (MMHPI) Caruth Community. The overall summary is listed on pg. 9 and pgs.10-11 list Intercept 1 activities. The team is unsure of the level of impact that Intercept 1 activities is having, but the group has increased trainings to assist with 911 calls at the South Central-Dallas Police Department location. Page 10 reflects that during the first 120 days of RIGHT Care deployment there were 674 total interactions with individuals, 121 were non-crisis follow-up care and 22 interactions resulted in a traditional law enforcement response. 278 interactions resulted in linkages with care, and the bullets after show the breakdown of those 278 interactions. Page 11 states there were 120 total diversions that occurred during the first 120 days of RIGHT Care deployment. The group is increasing training opportunities for new police officers, clinicians, and paramedics to participate on the RIGHT Care team, which their participant volume is expected to increase. He stated that Intercepts 2-4 (Initial Detention/Initial Court Hearings, Jails/Courts and Reentry) activities are listed on pgs.11-12 and their first subgroup meeting is scheduled for next week. Shenna Oriabure asked what the "Neutral" category means under the charts on pgs. 7-8. He answered stating they are transferred individuals who did not fail or were

unsuccessful. He stated that the category is based on process or legal requirements moving them out of the system. Judge Kristin Wade asked if they are individuals who plead out. He stated that they are the individuals that were transferred out to other jails who had existing holds. He stated Intercepts 2-4 provide a summary of the performance data and they currently have two subgroups assigned to examine the data. Their first meeting would be next week, and each subgroup will be divided into single groups. The first group will include The Bridge, The Cottages, Lynn Richardson and Joyce White to develop methods addressing the needs of the homeless population. The second group will focus on structure and the placement process for specialty courts. He also stated on pgs.12-13 list the summary data for Intercept 5 and the new data integration process with Loopback Analytics. Last, he stated Intercept 5 has been launched and they are beginning to perform test groups moving individuals into their services and tracking outcomes.

Presentations

Cultural Competency Training: De'An Roper

****** De'An Roper presented from 8:55 am-9:37am. She provided the committee with an informational handout of her PowerPoint presentation. She also facilitated a question and answer portion following the presentation. ******

BHSC Data and Reports – Judge Kristin Wade

Program and Department Updates: Program/outcome data, updates, and workload reports were presented and accepted via relevant dept./agency staff for the SAMHSA Grant, 530 Subcommittee, BHLT/CSP, Public Defenders, District Attorneys, CJ Dept. Jail reports, etc. (see packet pgs. 14-46 for details).

SAMHSA Update (Laura Edmonds pg.14): Laura Edmonds presented the SAMHSA grant update along with associated data and activities. She stated that the current grant year ends at the end of September 2018. They were able to send 45 individuals to Nexus for treatment who were in specialty court. They also were awarded a new 5-year SAMHSA grant funding, which begins September 30, 2018. She thanked Shenna Oriabure for applying for the grant. She stated the new grant funding would go toward females treated at Nexus who were in specialty court as well as minority males ages 17-30 to go to Homeward Bound for treatment. She stated the funds are also available for peer recovery coaching. The new grant funding begins September 30, 2018, and they would not be able to accept referrals until after all their anticipating contract services are awarded, which will be sometime in December 2018. Once the funding is executed they will inform the community. Last, she stated there would be a small lapse in funding, but the grant will begin shortly. Harry Ingram reiterated the lapse in funds and the attorney's ability to send individuals to Nexus and asked if there were other funding sources to cover the lapse. Shenna Oriabure stated that individual courts might have grant funding available or the Probation department may be able to cover the lapse. Dr. Jill Johansson-Love stated that the Probation department may be to cover the lapse and are currently addressing a similar issue with an individual in the program. Judge Kristin Wade reiterated the importance of informing the community and Specialty Courts of the new grant funding, so the monies can be used. Shenna Oriabure stated that they would notify everyone via email with the new referral paperwork and information explaining the process.

530 Sub Committee (Shenna Oriabure pgs. 15-19): Shenna stated that they have action items to be approved and voted on by the BHSC committee. She stated pg.18 shows the approved FY2019 530 Fund Budget by the committee. Kimberly Rawls previously emailed to the BHSC committee a chart listing the line items that were budgeted aiding in their final budget allocation. She stated that they also have two requests for incentives from DDC court for \$525.00 and from AIM court of \$840.00 based on their court capacity.

Judge Kristin Wade asked for a motion to approve the FY2019 530 Fund Budget (pgs.18-19); the motion was made by Laura Edmonds for approval and second by Michael J. Laughlin. Motion unanimously passed accepting the FY2019 530 Fund Budget without objection.

Judge Kristin Wade asked for a second motion to approve the 530 Sub Committee's two requests for incentives from DDC court for \$525.00 and from AIM court of \$840.00; the motion was made by Dr. Jill Johansson-Love for approval and second by Alyssa Aldrich. Motion unanimously passed accepting the two requests for incentives from DDC court for \$525.00 and from AIM court of \$840.00 without objection.

She also stated that the 530 Committee would sponsor an informational booth for National Recovery month with various literature regarding agencies who support substance abuse recovery and assist with mental health treatment, Wednesday, September 26, 2018 from 9:00am-1:00 pm at the Frank Crowley Courthouse. Last, she stated if there are any service providers wanting to provide literature, please contact Keta Dickerson at Keta.Dickerson@dallascounty.org.

BHLT & CSP Update Laura Edmonds/Adapt (Laura Edmonds pgs. 20-24): Laura reported that CSP has submitted their baseline information early for their metrics, which constant of meeting two goals: 1) Working with Adapt (ACS) to reduce recidivism. 2) Working with Transicare to link individuals discharging from Terrell State Hospital with a prescriber within 7/30 days. She also stated Health and Human Services approved the information. Last, she stated that they are finalizing all CSP contracts for next fiscal year (FY) and gathering all required information to complete reporting by the end of October 2018. Judge Kristin Wade expressed to the group the importance of providing their data for the BHSC packet because the BHLT committee reviews it.

Jail/hospital movement and homeless data/reports were presented by Janine Capetillo/Kimberly Rawls/Laura Edmonds and can be found in the packet on pages 25-32.

Hospital Movement (Janine Capetillo pg. 25): Janine Capetillo stated that the number of evaluations increased from July (38) to August (69). She stated that Senate Bill 292 should begin soon for the "In Jail Competency Restoration" program. Judge Kristin Wade explained the upcoming "In Jail Competency Restoration" program and it is designed for individuals to regain competency while in jail for those on the waiting list to go to the hospital and have not been approved to complete Outpatient Competency restoration. Conversation ensued regarding the "In Jail Competency Restoration" program structure and requirements.

Homeless Report (Kimberly Rawls pgs. 26-31): Kimberly Rawls stated from July 2018-August 2018, there was a slight increase of 31 persons among "Unique Individuals". She also stated there was a slight increase of 893 days for "Days in Jail" and a decrease of 3 days for "Average Number of Days in Jail" categories. Last, she stated all other categories were constant and to refer to the data in the packet.

Mental Health Case Matches (Laura Edmonds pg.32): Laura Edmonds stated that the report shows individuals identified with a mental health flag out of the total number of monthly jail bookings from the JIMI Stella database. For the month of August 2018 there were 6,079 total individuals booked into jail and 3,680 unique individuals who had a mental health flag. She also stated the percentages for the mental health categories would never equal 100% because some individuals may have multiple flags. Last, she stated the NTBHA ID (25.24%) and PAP (10.92%) flag categories represent those individuals with an active mental health condition.

Public Defenders (Lynn Richardson pgs. 33-35): Lynn Richardson stated that the data is listed on pgs. 33-35 for the months of June to August 2018. Harry Ingram was the overseer of ATLAS and S.E.T courts. For June to August 2018, statistics show Roger Lenox and Lashonda Taylor as overseers of MHPD courts for individuals who were not eligible for the specialty court programs. Felony and misdemeanors competency

statics are listed for Malcolm Harden and Randall Scott for June to August 2018. The mental health courts (MI) data is also provided which are civil commitments, and attorneys Larry Roberts, Robert Black, and Lashonda Taylor (who oversees and handles complex cases as well as civil commitments) numbers are listed. She also stated they had the Prostitution Diversion Initiative (PIT) last night, in which three of their Case Managers participated: Stella, Angelo and Marcella. Last, she stated they are in the process of hiring another Case Manager for the Public Defender's office to work specifically with in jail-based competency restoration.

District Attorney's (Lee Pierson/BHSC Supplemental Packet): He stated that their data is listed in the BHSC Supplemental packet. He stated it shows Prosecutor Attorney's Kendall McKimmey's personal statistics for felony cases. Each attorney's caseload information is listed on the back page. The data does not reflect the number of individuals who needed an intake performed from the Caruth Smart Justice docket, which averages about 75 individuals monthly. He also stated the document is not reflective of the sanity trials information because of staffing difficulties due to daily changes. Last, he stated they had a recent change to their division and Chis Hawkins is the new prosecutor for their division.

Provider Reports

The Bridge (Kelly Kane pg.36): She stated that the data is on pg. 36, and their numbers are consistent. They are sheltering many individuals due to the inclement weather and it being extremely hot. The Downtown Dallas Inc. (DDI) clean team oversees a collaboration between the Dallas Police Department (DPD), downtown safety, and The Bridge's Care Managers to engage unsheltered homeless individuals in the downtown area in an effort to bring them into The Bridge for community services and shelter. She stated the collaboration has occurred every morning and will take place over the next 80+ mornings.

Judge Lela Mays asked for any suggestions for persons needing to go to The Bridge since it is at maximum capacity. Kelly answered stating they are trying to accommodate as many individuals as possible in layover beds. She stated the other shelters are enforcing their identification policies making it difficult for many females to access housing except for The Bridge. They anticipate receiving more shelter beds. Judge Kristin Wade asked about The Bridge's upstairs space and when it would be available to house individuals. Kelly answered stating the wait is not long and is unsure of the requirements but stated that the individual must have a housing plan, be self-sufficient, have identification, a social security number/card, and no active warrants.

Judge Lela Mays stated during the August 9, 2018, BHLT meeting Brooke Etie, Dallas Housing Authority (DHA) Vice President for the Voucher Program, came and presented stating they are no longer issuing new vouchers, and any individual currently in transitional shelters will not receive a housing voucher, which limits shelters capacity. Lynn Richardson stated that the Dallas Life foundation has beds and will pay up to 90 days for qualifying individuals. She also stated families and sex offenders are not permitted. Last, she stated they do not have to leave the shelter during the day and they will help individuals get their identification.

Metrocare (Crystal Garland pgs.37-39): She stated the report is on pgs.37-39 for June-August 2018. The numbers have been increasing particularly in July 2018, for ATLAS, Post-DDRTC, STAC, Misc., PRIDE, and DDRTC courts. They had many graduates in the month of August from all the specialty courts and provided the statistics for the graduates who successfully completed the program from each court on pg.39. The graduate data includes ATLAS (8), Post-DDRTC (4), STAC (3), Misdemeanor (6), PRIDE (0), and DDRTC (15). She also stated they are receiving referrals every other day. Last, she stated both Probation and Parole ICM statistics were consistent. Marlene Buchanan stated the data for DDRTC is consistent and they currently have 28 females and 30 males participating in the program. She also stated that Probation ICM statistics are low but believes it due to overall Probation statistics being low. Last, she stated for Parole ICM under the "Number of Offenders" served at the end of the month is 92 individuals with their max being 100 participants.

IPS Reports (Enrique Morris/Jessica Simmons/Provided Data Handout): Enrique Morris provided the committee with a handout of their statistical data. Their admissions trends stabilized for the months of July and August 2018, when compared to last year's July and August 2017, numbers. He stated that 2017 and 2018, were instrumental for several programs being launched, which include MAT/Detox and Community Based-Psych Case Management. The stabilization for the months of July and August 2018 enables them to review their processes and update where needed to ensure community partnerships are being properly implemented. They would be scheduling future meetings with collaborating community providers to address any components needing reevaluation. The August 2018, Program Utilization Distribution data remained stable; and Outpatient SUD and SUD-MAT/Detox were the primary areas of care. Psych services was secondary. MAT/Detox operations remain stable and was one of the newer programs that created substantial growth when compared to 2016 and 2017 statistics. He stated that August 2018 Gender Distribution increased (volumes did not print onto the graph) and they saw an increase in female patients due to the OUD patients requiring MAT/Detox intervention. The August 2018 Ethnic Distribution increased with higher surges among Caucasian patients while other ethnicities remained stable. On pg. 2 the August 2018 Drug of Choice by Self Report graph shows an increase of Opioid patients. Last, he stated that The August 2018 SUD Program Progression Rate shows 52% of cases being advanced to a lower level of care (LOC), 39% of individuals being retained at their current (LOC), and 9% of cases being evaluated to an alternative LOC.

Outpatient Competency (Janine Capetillo pg. 40): Judge Kristin Wade stated that Janine previously covered this agenda item during her Hospital Movement update and to refer to that agenda item.

DIVERT (Keta Dickerson [Report update provided by Teresa Saulsberry] pg. 41): Teresa Saulsberry stated that for August 2018, at the start of the month they had 149 participants, 5 new admissions, 4 unsuccessful discharges, 5 graduates, and ended the month with 145 participants.

Specialty Courts CSCD (Serena McNair/Rosa Sandles pgs. 42-46): Rosa Sandles stated that ATLAS Court for July and August 2018 had 4 participants, 1 unsuccessful and 6 graduates. For DDAC Court, their admissions are usually high and had many individuals graduating from the program. DDAC ended the year with 25 participants. For MMH Court, numbers have increased and they ended the month of August with 15 participants. STAC court ended the month of August with 135 participants and their mental health clients for the end of August was 27 participants. Last, she stated for STAR Court they ended the month of August with 8 participants.

Announcements: Lynn Richardson announced the Dallas Criminal Defense Lawyers Association (DCDLA) training is today, September 20, 2018 at 12:00 noon in Auxiliary Room 9, on the 5th floor. She provided an overview of the training. Judge Kristin Wade acknowledged Janie Metzinger to the committee. Janie thanked Lynn Richardson, Vickie Rice, Charlene Randolph, and Jessica Martinez for their presentation at the Urban County Affairs Committee of the House hearing on August 23, 2018, in Dallas, TX. She stated the other committee's reports should be completed by November 2018 and will provide feedback. John Henry stated that NTBHA in conjunction with Parkland soft opened the Extended Observation Unit (EOU) Monday, September 17, 2018, and began with 6 out of 18 chairs for patient care. He stated Homeward Bound's crisis residential unit is now open. Judge Kristin Wade announced the committee's next scheduled meeting is Thursday, November 15, 2018.

Laura Edmonds announced that Dallas County has a partnership with Catholic Charities and has been allotted 13 units for Criminal Justice referrals. She stated requirements include: individuals 55+ years, single, and meet the HUD homeless definition. She stated to send referrals to Joyce White at Joyce.White@dallascounty.org. The funds will be initially paid by Catholic Charities then eventually transferred to the City of Dallas Housing Voucher program. Last, she provided the committee with the informational flyer. Lynn Richardson asked are there any restrictions on criminal history. Laura answered stating no violent offenses but will be determined on a case-by-case basis as well as no sex offenders.

Adjournment

Judge Kristin Wade adjourned the meeting at 10:45 am. The next meeting is set for Thursday, November 15, 2018, at 8:30am in the same location. Reminder was provided to everyone to submit their monthly stats to Kimberly Rawls (Kimberly.Rawls@dallascounty.org) via email by the 2nd Friday of each month for tracking and distribution.

Month	Year	Initial MH #	Eligible	# Signed orders	Presented	Denied	Other	Granted	Misdemeanor	Felony
January	2018	1284	162	211	67	6	3	58	38	44
February	2018	1262	150	187	51	8	3	40	19	37
March	2018	1271	175	235	42	13	1	28	18	20
April	2018	1384	181	234	53	6	1	46	25	38
May	2018	1457	243	323	84	14	0	70	45	45
June	2018	1455	214	301	60	13	1	46	36	32
July	2018	1438	223	296	69	11	1	57	39	35
August	2018	1509	230	284	80	12	0	68	45	55
September	2018	1302	177	247	56	12	0	44	29	33
October	2018	1317	175	236	42	12	1	29	12	30
TOTALS		13679	1930	2554	604	107	11	486	306	369

Yellow = Court Proceedings

Other = Granted MH Bond in court released by other means prior to PR bond posting

Misdemeanor and Felony totals calculated for individuals APPROVED & RELEASED on MH Bond

2017 TOTALS

APR - DEC	10794	1568	1609	449	36	15	398	296	277
------------------	--------------	-------------	-------------	------------	-----------	-----------	------------	------------	------------

Note:

April-October 2017: Misdemeanor and Felony totals included all cases presented for bond (approved and denied)

November 2017-Current: Misdemeanor and Felony totals included only cases APPROVED for bond

April 2017 - Present

APR - DEC	24473	3498	4163	1053	143	26	884	602	646
------------------	--------------	-------------	-------------	-------------	------------	-----------	------------	------------	------------

Levels

Month	Year	Level 1	Level 2	Level 3
January	2018	13	30	15
February	2018	6	22	12
March	2018	5	11	12
April	2018	5	30	11
May	2018	16	44	10
June	2018	7	27	12
July	2018	10	30	17
August	2018	6	46	16
September	2018	3	28	13
October	2018	3	17	9
TOTAL		74	285	127

Total number of levels approved, does not account for discharged/closed out files.

Discharges

Month	Year	Successful	Unsuccessful	Other
January	2018	20	25	0
February	2018	15	24	0
March	2018	15	22	0
April	2018	21	30	0
May	2018	15	25	1
June	2018	16	25	1
July	2018	15	29	2
August	2018	11	30	0
September	2018	17	35	0
October	2018	21	41	1
TOTAL		166	286	5

April 2017-Present: Total Approved 884

April 2017-Present: Total Discharges 611

****Successful-172 (36.1%); Unsuccessful-277 (62.6%); Neutral-6 (0.011%)**

273 - Active Cases 8/31/2018

Months	IMPLEMENTATION LAUNCH - Reasons for outcomes for all ordered assessment/not presented to Mag. [from column E on sheet 1] ²																	Total ³
	Attorney refusal	Case deferred	Charges dropped	Competency Concerns	Contested and detained	Court plea/disposition	Current MH Bond	Declined assessment	Dry writ release	Exc. per CJ criteria	Homeless/no reference	Other	Other PR Bond	Posted Bond	Reference declined residence	Refused to participate	Unable to verify residence/contact	
AUG '17	0	0	0	4	0	0	0	24	0	13	0	24	0	32	0	9	34	140
SEP '17	0	0	0	11	0	0	0	22	0	5	0	10	0	24	0	10	44	126
OCT '17	0	0	6	4	0	1	0	16	1	15	15	5	3	35	5	9	11	126
NOV '17	0	0	5	5	0	4	0	21	0	13	19	0	2	39	14	6	10	138
DEC '17	0	0	1	5	0	4	0	10	0	2	15	0	4	24	8	6	16	95
JAN '18	0	0	7	4	0	6	0	22	0	6	8	1	1	21	12	10	8	106
FEB '18	0	0	1	7	0	2	0	23	0	5	10	1	3	19	4	10	3	88
MAR '18	0	0	3	3	0	6	0	20	0	14	11	4	8	20	14	19	8	130
APR '18	0	0	2	4	0	5	0	18	0	7	16	0	7	16	18	13	10	116
MAY '18	0	0	3	5	0	6	0	25	0	4	23	3	6	35	21	10	14	155
JUN '18	0	0	3	13	0	3	0	26	1	8	17	3	2	30	19	12	15	152
JUL '18	0	0	1	5	0	0	1	25	0	5	23	3	2	26	24	13	12	140
AUG '18	0	0	0	9	0	1	1	22	2	11	19	8	4	41	9	16	6	149
SEP '18	0	0	0	3	0	1	0	24	0	10	18	5	4	26	12	13	5	121
TOTAL	0	0	32	82	0	39	2	298	4	118	194	67	46	388	160	156	196	1782

Months	IMPLEMENTATION LAUNCH - Percentages of Reasons for outcomes for all ordered assessment/not presented to Mag. [from column E on sheet 1]																	
	Attorney refusal	Case deferred	Charges dropped	Competency Concerns	Contested and detained	Court plea/disposition	Current MH Bond	Declined assessment	Dry writ release	Exc. per CJ criteria	Homeless/no reference	Other	Other PR Bond	Posted Bond	Reference declined residence	Refused to participate	Unable to verify residence/contact	
AUG '17	0%	0%	0%	3%	0%	0%	0%	17%	0%	9%	0%	17%	0%	23%	0%	6%	24%	
SEP '17	0%	0%	0%	9%	0%	0%	0%	17%	0%	4%	0%	8%	0%	19%	0%	8%	35%	
OCT '17	0%	0%	5%	3%	0%	1%	0%	13%	1%	12%	12%	4%	2%	28%	4%	7%	9%	
NOV '17	0%	0%	4%	4%	0%	3%	0%	15%	0%	9%	14%	0%	1%	28%	10%	4%	7%	
DEC '17	0%	0%	1%	5%	0%	4%	0%	11%	0%	2%	16%	0%	4%	25%	8%	6%	17%	
JAN '18	0%	0%	7%	4%	0%	6%	0%	21%	0%	6%	8%	1%	1%	20%	11%	9%	8%	
FEB '18	0%	0%	1%	8%	0%	2%	0%	26%	0%	6%	11%	1%	3%	22%	5%	11%	3%	
MAR '18	0%	0%	2%	2%	0%	5%	0%	15%	0%	11%	8%	3%	6%	15%	11%	15%	6%	
APR '18	0%	0%	2%	3%	0%	4%	0%	16%	0%	6%	14%	0%	6%	14%	16%	11%	9%	
MAY '18	0%	0%	2%	3%	0%	4%	0%	16%	0%	3%	15%	2%	4%	23%	14%	6%	9%	
JUN '18	0%	0%	2%	9%	0%	2%	0%	17%	1%	5%	11%	2%	1%	20%	13%	8%	10%	
JUL '18	0%	0%	1%	4%	0%	0%	1%	18%	0%	4%	16%	2%	1%	19%	17%	9%	9%	
AUG '18	0%	0%	0%	6%	0%	1%	1%	15%	1%	7%	13%	5%	3%	28%	6%	11%	4%	
SEP '18	0%	0%	0%	2%	0%	1%	0%	20%	0%	8%	15%	4%	3%	21%	10%	11%	4%	
AVG %	0%	0%	2%	5%	0%	2%	0%	17%	0%	7%	11%	4%	3%	22%	9%	9%	11%	

Months	Assessments Ordered - Results				Assessment Recommendations (LOCs) ³										Outcomes	
	Assessments Ordered	Assessment Completed	Assessment not completed ¹	Assessment halted - competency concerns ²	IDD Services	Jail-based Psy. Services	LOC 1S / Standard IOP	LOC 2 / Standard IOP	LOC 3 / Standard IOP	LOC 4 FACT / Standard IOP	LOC 4 ACT / Standard IOP	LOC 5 / Standard IOP	Routine Outpt.	No BH Svs. Indicated	MHPR released & connected to services	
JAN - DEC 2018																
JAN '18	164	120	41	5	2	7	31	28	20	4	1	2	13	10	58	
FEB '18	140	89	47	5	0	8	28	14	18	2	2	3	4	7	40	
MAR '18	174	116	54	3	0	4	50	9	34	2	2	0	5	1	28	
APR '18	180	159	40	5	4	8	70	24	32	3	4	4	3	5	46	
MAY '18	237	203	66	4	1	8	96	30	44	4	6	0	6	6	70	
JUN '18	222	176	64	13	0	15	86	21	28	8	3	0	5	5	46	
JUL '18	211	177	70	5	0	7	72	18	46	2	11	0	6	5	57	
AUG '18	228	186	72	9	0	12	91	23	39	0	7	0	9	2	68	
SEP '18	187	141	71	3	0	5	54	21	35	0	10	0	5	7	44	
TOTAL	1743	1367	525	52	7	74	578	188	296	25	46	9	56	48	457	

Meadows Mental Health Policy Institute

Caruth Community Update – 3rd Quarter 2018

Meadows Mental Health Policy Institute (MMHPI or the Institute) submitted the Caruth Smart Justice Planning Grant Phase II proposal to the W. W. Caruth, Jr. Foundation at the Communities Foundation of Texas on July 15, 2016.¹ Our implementation of the Caruth Smart Justice Project (Caruth Project) began in January 2017. The project is aligned with and supports the local behavioral health system and its efforts to meet the needs of residents with mental health issues in North Texas. As we near the end of Year 2 of the grant, the new services and revised processes we developed during the Caruth Project's planning phase are being implemented for each of the points of contact within the Sequential Intercept Model.

The Caruth Project has developed an active collaboration with community providers and stakeholders, working together to reduce the number of people with mental health needs and criminal justice involvement in order to increase access to high-quality community-based treatment. We have formal agreements with the Dallas Police Department (DPD), the Dallas Fire and Rescue Department (DFRD), Parkland Health and Hospital System (Parkland), and community providers of Assertive Community Treatment (ACT) and Forensic Assertive Community Treatment (FACT). Through the Dallas County Criminal Justice Department (DCCJD) and the Dallas County Sheriff's Department, Dallas County has collaborated with Parkland's Jail Health staff to transform screening and assessment procedures, working to ensure that every person is screened for mental health needs upon admission to the jail. The screening protocol connects individuals who need a full assessment to existing resources. It also initiates the parallel processes of assessing risk to determine eligibility for release and developing a supervision plan that includes treatment.

These changes have resulted in more people being released on no-cost personal recognizance bonds and becoming connected to community-based treatment and appropriate court supervision. Our work with Parkland has been instrumental, beginning with Parkland's initial partnership with the Rapid Integrated Group Healthcare Team Care (RIGHT Care) units. In this partnership, Parkland hired and trained the clinicians for the RIGHT Care units and agreed to provide the mental health clinicians for the clinical support for 911 dispatch. By inviting Loopback Analytics' near-real-time data feed platform into its treatment planning process, Parkland expanded its role in the Caruth Project by improving screening of people who may

¹ On October 5, 2016, the trustees of the W. W. Caruth Foundation at the Communities Foundation of Texas approved the grant proposal, which enables the Meadows Mental Health Policy Institute to work closely with Dallas County, the City of Dallas, and a broad array of partners to implement the Dallas County Smart Justice Project.

qualify for Level of Care 4 and 5 services. We wish to thank our partners for their continued support and energy in advancing the Caruth Smart Justice Project.

Intercept 1 (Law Enforcement)

The Rapid Integrated Group Healthcare Team (RIGHT Care) – the multidisciplinary response team (MDT) critical to reducing the burden on law enforcement in responding to 911 mental health calls in the Dallas community – is providing regular outcomes analysis of call data provided by DPD, Parkland Health and Hospital System (Parkland), and DFR. Parkland has taken lead on collecting and organizing the data so that the Institute can prepare reports for executive leadership and, upon approval, public distribution. Partnerships between the City of Dallas, Parkland, Integrated Psychotherapeutic Services (IPS), Metrocare, the Child and Family Guidance Center, and other community providers have been critical to the successful launch of the RIGHT Care program. In the first 245 days of deployment, RIGHT Care had 1,875 total interactions with individuals; 547 interactions resulted in diverting these individuals from arrest or involuntary hospitalization, connecting them instead to treatment or services. Linkages to care include community-based services, housing resources, transportation to community clinics, and referral to Assertive Community Treatment.

In a preliminary analysis on call data provided by the DPD, Parkland, and the DFR for the first 245 days of RIGHT Care deployment, we found:

- There was a total of 1,875 interactions with people:
 - The team had 1,294 unique interactions with people.²
 - The team responded to 1,294 calls for service and referrals.
 - 581 interactions involved team-initiated outreach or non-crisis follow-up care by the team (“follow-up care” is defined as either subsequent phone calls or an in-person visit).
- 66 interactions resulted in a traditional law enforcement response:
 - 34 arrests were for previous warrants.
 - 32 arrests were for an offense on-scene.
- 640 interactions resulted in linkages with care, including the following highlights:
 - 99 people were taken to an outpatient clinic.
 - 45 people were taken to a psychiatric facility via RIGHT Care or a family member.
 - 89 people were transported to a medical hospital by an ambulance.
 - 99 people were immediately connected to housing resources.³
 - 27 people were linked to Assertive Community Treatment (ACT).

² Unique individuals refer to the number of people who have interacted with the RIGHT Care team.

³ Housing resources includes a person’s own home or a family member’s home.

- 2 people were linked to ADAPT Mobile Crisis Services.
- 279 people were provided with other resources and referrals.
- There were 547 total diversions (a subset of the numbers provided above), including:
 - 397 diversions to outpatient care or home-based treatment rather than the hospitalization that would have occurred without the RIGHT Care intervention.
 - 150 jail diversions, where the behavior constituted low-level criminal behavior, such as trespass or disorderly conduct, and the person was linked to treatment rather than arrested.

Intercept 2 (Initial Detention/Initial Court Hearings)

Intercept 3 (Jails/Courts)

Intercept 4 (Re-Entry)

The three work groups within the Dallas County Criminal Justice Department (DCCJD), each led by a criminal court judge, are completing key tasks flagged for improvement to meet the Caruth grant activity metrics. We recently learned the DCCJD work group focusing on creating behavioral health housing for Caruth Smart Justice Project clients has created detailed information of available housing agencies to share those resources with Caruth Smart Justice Project treatment providers.

DCCJD staff have developed internal data tracking tools to monitor program activities and performance outcomes. These tracking tools are undergoing continual revisions to better reflect the measurement needs of the project. Each month, the DCCJD provides Caruth Project data to help identify improvements in screening and in moving people with mental health needs through pretrial and into treatment, when appropriate. Highlights of program activity and performance data for the period of April 17, 2017, through August 2018 are as follows:

- 90,461 defendants booked into the jail were screened for mental health needs.
- 21,854 of these defendants screened positive for possible mental health needs.
- 3,147 of the 21,854 passed initial screening and were court-ordered for assessment.
- 954 of eligible defendants were recommended for release on a personal bond.
- 811 of those recommended for release were granted a personal bond release with conditions that included treatment and supervision by pretrial services staff.

Since mid-November 2017, when the Caruth Project formally began placing defendants released from jail into services, the DCCJD has worked to streamline the referral process with the North Texas Behavioral Health Authority (NTBHA), arranging regular calls to discuss issues with level of care approval, provider handoffs, criminogenic risk assessment distribution, and other related items. Beginning in Spring 2018, DCCJD staff started working closely with the Institute and NTBHA staff to identify what happens following personal bond release, monitoring

whether clients reach their referral source and the level of engagement once that occurs. Our programs will continue to collaborate to improve referral processes as the project continues.

Intercept 5 (Community Corrections and Services)

We have identified four community treatment providers that are able to provide the most appropriate services for Caruth Project service expansion: Metrocare Services (two ACT teams), Integrated Psychotherapeutic Services (IPS) (one FACT team), Transicare (one FACT team), and Child and Family Guidance Center (one ACT team). This list reflects a recent change as IPS and Transicare have separated their combined FACT team to form two separate FACT teams, which will increase our ACT and FACT team total to five.

Currently, Dr. Amanda Mathias, Senior Director of Innovation with MMHPI, is planning for the ACT and FACT units' fidelity review period. We have adopted the Tool for Measurement of Assertive Community Treatment (TMACT) as the highest standard of fidelity for ACT and have worked on improving the five participating teams' adherence to this model. With the help of Dr. Jennifer Skeem and the Institute's Dr. Mathias and Dr. Jim Zahniser, we have developed a FACT fidelity tool that combines elements of the TMACT and the evidence-based Correctional Program Checklist. Dr. Maria Monro-DeVita collaborated on this initiative as well. Dr. Monroe-DeVita created the TMACT, which is the state-of-the-art measure for assuring fidelity to the ACT model. Opportunities such as these reviews create a benchmark to help providers transform the behavioral health system in Dallas County beyond the Caruth Project's efforts and into a system that fully embraces evidence-based and best practices.

Real-Time Information Systems: Loopback Analytics Partnership Across All Five Intercepts

Loopback Analytics (Loopback) has worked closely with MMHPI, Dallas Fort Worth Hospital Council Foundation (DFWHC), NTBHA, Dallas County, and several hospital systems to acquire necessary data sharing agreements and secure data feeds to create early identification and referral to treatment for people in the Caruth target population. NTBHA agreed to provide its data to Loopback via data sharing agreements in July 2017 and has been transferring data to Loopback to integrate with hospital system data since August 2017. The Commissioners Court approved the jail data sharing agreement with Loopback in August 2018, and IT technical design, integration, and testing of the data feed began in September 2018. In October 2018, the jail book-in data live feed began its production. As of January 2018, with the help and support of the Dallas-Fort Worth Hospital Council, several hospitals had joined the data feed; these hospitals included Texas Health Resources (THR), Parkland, and Methodist Health System. Data sharing agreements are currently in the works with UT Southwestern Medical Center and with Baylor.

The real-time live feed from THR, Parkland, and Methodist are being augmented with two years of historical patient data made available by contract from the Dallas-Fort Worth Hospital Council. This hospital data set and mental health encounter data from NTBHA form the basis for the cohort notifications that were deployed at THR and Parkland emergency departments (EDs) in April 2018.

With the combination of THR, Parkland, and NTBHA real-time and historical data feeds, Loopback has developed a series of analytic dashboards that enable the Caruth Project to more precisely identify and target people who meet established state criteria for ACT or FACT services. In addition to the state's definition of Level of Care 4 criteria, which qualifies a person for ACT or FACT, the dashboard allows the program to identify candidates for ACT and FACT based on a detailed analysis of utilization patterns, diagnoses, and social determinants of health, with the objective of assigning candidates to the appropriate treatment level.

Preliminary analysis of the three shared data feeds has shown how this type of information sharing may be able to sustain itself beyond our Caruth Project efforts. Loopback has the ability to demonstrate how near-real-time health information can depict patterns that can help the crisis system identify where clients slip between the cracks in the continuum of care, the impact of multiple medication prescriptions on clients trapped in the cycle of frequent utilization at different EDs, and how contact with an ACT team can significantly reduce a person's number of ED visits. The capability of the data sharing platform to predict trends in the Dallas Metroplex's crisis system can serve as a model for all local crisis and treatment providers.



Behavioral Health Steering Committee

530 Fund Sub-Committee

October 10, 2018

Attendees

Keta Dickerson, Judge Jennifer Bennett, Ruth Kaiser, Lynn Richardson, Laura Edmonds, Julie Turnbull, Stephanie Gonzalez, Vickie Rice, Serena McNair, and Judge Lela Mays

Review/Approval of Minutes

Laura Edmonds called the meeting to order at 9:33am and asked for a motion to approve the minutes. Judge made a motion to approve the minutes. Lynn Richardson seconded the motion and the minutes were accepted by the group.

530 Fund Balance and Update

An update of the 530 Fund Balance was provided. Currently the balance for the Felony account (4020) is \$126,627.48; the Misdemeanor account (4031) is \$63,335.56 for a total of \$189,962.98. Laura Edmonds provided an overview the 530 Fund FY 2018 expenditures, and reviewed the FY2019 530 budget.

Drug Testing

Laura Edmonds presented 530 specialized drug testing utilization thus far for FY18. She reminded the group of the drug testing that is available for specialty courts. She also let the committee know that while Shenna Oriabure is out on leave all drug testing requests can be sent to Teresa Saulsberry and Keta Dickerson.

Request for Funding

STAC Court submitted a request for funding. They requested \$850 for 10 days of residential treatment for a female participant. STAC Court has a grant available to fund 35 days of treatment, but additional 530 funds will allow the individual to stay in treatment for a total of 45 days. Judge Wade made a motion to approve this request, and it was seconded by Lynn Richardson. STAC Court later amended their request to \$2,550 in order to cover three STAC Court participants. This amended request was voted on by the sub-committee over email on October 23rd and was approved. This request will be covered under Post-Adjudication Inpatient Treatment line item.

530 Sub Committee

Minutes from October 10, 2018

Page 1 of 2

MHJD and SET Court requested funds for the FY2019 incentives. They requested a total of \$750 (\$15.00/50 participants). Keta Dickerson made a motion to approve this request and Julie Turnbull seconded it.

Training/CCIF Collaboration

Discussion took place regarding options for cultural competency training for specialty courts. An option was previously emailed out regarding a proposal for Implicit Bias. . The cost ranges from \$3,500-\$7,500 dependent on number of attendees and presentation length. The committee discussed this and reported that they felt this was too much money. It was brought up that the North Texas Behavioral Health Authority (NTBHA) is hosting a free cultural competency training on November 7-9. The committee reported and discussed how this is a good opportunity, but difficult for courts to attend due to the length. Laura Edmonds stated she would discuss with NTBHA if there is an opportunity to provide an abbreviated version of this training to specialty courts toward the beginning of the year. Information on the free November training will be emailed out so the committee is aware in case anyone from their team is able to attend.

Texas State Office of the Governor Update

Keta Dickerson reported that she will be attending a meeting in Austin with the Office of the Governor (OOG) on October 19th. She discussed that some Dallas County courts experienced funding reductions from OOG. She reported that courts that experienced reductions in funding seemed to be associated with their courts reporting that they are serving individuals who are low risk and low need according to the TRAS. She discussed the importance of having the court grant writer pay attention to the communication that is coming from OOG. The committee reported that they would like the courts to receive further training on this. Julie Turnbull did report that this year's TACS conference should have a session on grant writing that courts can attend. Keta further elaborated on the importance of providing strong data and responses to OOG when completing the biannual and annual reports. Serena McNair recommended that Keta assist with overseeing the grants from all the courts. Judge Wade stated that she recommends that the whole court team review the grant report before submission to OOG. Keta also reported that in January 2019 all courts need to be up to date with complying with best practices. If they are not complying or requesting a waiver, then this could impact future funding opportunities as well.

Announcements

The committee acknowledged Serena McNair and the promotion she received in CSCD. Keta reported that the booth that 530 sponsored for National Recovery month was successfully and they had a strong turnout. She stated that there was a good response to the resourced provided and it should be something that the committee does more often. Lynn Richardson discussed the changes that will be coming with the move Dallas County is making toward 24-hour arraignment in the jail. These changes may have an impact on specialty courts processes and numbers, particularly pre-adjudicated court programs. Laura Edmonds suggested the committee continue to be revisit this change as it is implemented toward the beginning of the year.

Adjourn

The meeting was adjourned at 10:35 am and will reconvene on 12/12/18 @9:30am.



Crisis Services Project

CSP Total

DY7 CSP Monthly Report_No Graphs(with LCN)

Last Refresh: 10/3/18 at 8:17:39 AM GMT-05:00

	Past Year Avg	2018-01	2018-02	2018-03	2018-04	2018-05	2018-06	2018-07	2018-08	2018-09	Average:	Sum:
Total Service Episodes:	768	680	646	702	391	454	355	364	396	305	477	4,293
Total Unique CID:	589	672	603	610	328	388	301	281	309	233	413.89	3,725
Total Unique SID:		671	603	609	328	388	301	281	309	231	413.44	3,721
% Change to DY 4 by CID		114.09%	102.38%	103.57%	55.69%	65.87%	51.10%	47.71%	52.46%	39.56%		

Total Encounters by Type:		2018-01	2018-02	2018-03	2018-04	2018-05	2018-06	2018-07	2018-08	2018-09	Average:	Sum:
Triage		680	646	702	391	454	355	364	396	305	477	4,293
Care Coordination		2,608	2,418	2,770	2,447	3,044	2,433	2,459	2,733	2,000	2,545.78	22,912
F2F Encounter		345	352	384	310	386	308	295	339	246	329.44	2,965
Sum:		3,633	3,416	3,856	3,148	3,884	3,096	3,118	3,468	2,551	3,352.22	30,170

F2F Encounter		2018-01	2018-02	2018-03	2018-04	2018-05	2018-06	2018-07	2018-08	2018-09	Average:	Sum:
MHPR Bond		166	141	159	174	241	199	200	218	158	184	1,656
Non-MHPR		179	211	225	136	145	109	95	121	88	145.44	1,309
Sum:		345	352	384	310	386	308	295	339	246	329.44	2,965

Powered by:





Crisis Services Project

Frank Crowley

DY7 CSP Monthly Report_No Graphs(with LCN)

Last Refresh: 10/3/18 at 8:17:39 AM GMT-05:00

	2018-01	2018-02	2018-03	2018-04	2018-05	2018-06	2018-07	2018-08	2018-09	Average:	Sum:
Service Episodes:	680	646	702	391	454	355	364	396	305	477	4,293

	2018-01	2018-02	2018-03	2018-04	2018-05	2018-06	2018-07	2018-08	2018-09	Average:	Sum:
Unique Consumers:											
By N* ID	287	250	255	123	134	95	101	105	72	158	1,422
By LCN	136	128	126	80	104	78	66	97	56	96.78	871
By Client ID	249	225	229	125	150	128	114	107	105	159.11	1,432
TOTAL Unique Consumers:	672	603	610	328	388	301	281	309	233	413.89	3,725
TOTAL Unique Consumers as %:	98.82%	93.34%	86.89%	83.89%	85.46%	84.79%	77.20%	78.03%	76.39%		

	2018-01	2018-02	2018-03	2018-04	2018-05	2018-06	2018-07	2018-08	2018-09	Average:	Sum:
Unique F2F:											
By N* ID	115	118	136	87	100	73	75	85	47	92.89	836
By LCN	57	64	59	46	78	67	47	71	40	58.78	529
By Client ID	140	123	123	92	130	105	95	96	83	109.67	987
TOTAL Unique F2F:	312	305	318	225	308	245	217	252	170	235.2	2,352
TOTAL Unique F2F as %:	90.43%	86.65%	82.81%	72.58%	79.79%	79.55%	73.56%	74.34%	69.11%		

		Average:	Sum:
F2F Percentages:			



Crisis Services Project

Frank Crowley

DY7 CSP Monthly Report_No Graphs(with LCN)

Last Refresh: 10/3/18 at 8:17:39 AM GMT-05:00

Encounters by Type:	2018-01	2018-02	2018-03	2018-04	2018-05	2018-06	2018-07	2018-08	2018-09	Average:	Sum:
Triage	680	646	702	391	454	355	364	396	305	477	4,293
Care Coordination	2,608	2,418	2,770	2,447	3,044	2,433	2,459	2,733	2,000	2,545.78	22,912
F2F Encounter	345	352	384	310	386	308	295	339	246	329.44	2,965
TOTAL Encounters:	3,633	3,416	3,856	3,148	3,884	3,096	3,118	3,468	2,551	3,352.22	30,170

Female:	2018-01	2018-02	2018-03	2018-04	2018-05	2018-06	2018-07	2018-08	2018-09	Average:	Sum:
Black	94	77	81	42	60	41	39	49	36	57.67	519
Hispanic	33	19	23	9	17	8	12	10	4	15	135
Other			1	1	1		2			1.25	5
Unknown	3	2	1	2	2	3	1	2	3	2.11	19
White	54	58	57	34	24	23	24	34	16	36	324
TOTAL Female:	184	156	163	88	104	75	78	95	59	111.33	1,002

Powered by:





Crisis Services Project

Frank Crowley

DY7 CSP Monthly Report_No Graphs(with LCN)

Last Refresh: 10/3/18 at 8:17:39 AM GMT-05:00

<u>Male:</u>	2018-01	2018-02	2018-03	2018-04	2018-05	2018-06	2018-07	2018-08	2018-09	Average:	Sum:
Black	299	265	254	126	154	128	109	123	91	172.11	1,549
Hispanic	67	60	57	39	46	40	31	30	23	43.67	393
Other	3	8	4	3	3		2	1	2	3.25	26
Unknown	5	3	7	7	9	7	11	5	6	6.67	60
White	113	109	124	63	72	51	48	55	52	76.33	687
TOTAL Male:	487	445	446	238	284	226	201	214	174	301.67	2,715

<u>Gender Not Collected:</u>	2018-02	2018-04	2018-07	Average:	Sum:
Black			1	1	1
Unknown	1	1		1	2
TOTAL Gender Not Collected:	1	1	1	1	3

<u>Age of Triage Encounters:</u>	2018-01	2018-02	2018-03	2018-04	2018-05	2018-06	2018-07	2018-08	2018-09	Average:	Sum:
Adult	655	589	602	321	382	298	277	304	231	406.56	3,659
Minor	12	11	8	6	6	3	4	4	1	6.11	55
Uncollected	5	2						1	1	2.25	9
		1		1						1	2
TOTAL Age of Triage Encounters:	672	603	610	328	388	301	281	309	233	413.89	3,725

Triage 12	3,720
Recidivism 12-12	1,055
Recidivism 12-12%	28.36%

	January	February	March	April	May	June	July	August	September				
Year MO	2018/01	2018/02	2018/03	2018/04	2018/05	2018/06	2018/07	2018/08	2018/09				
Recidivism 12-12	15	76	174	318	453	599	762	924	1,055				
Triage 12	671	1,274	1,883	2,211	2,599	2,900	3,181	3,490	3,720				
Recidivism 12-12%	2.24%	5.97%	9.24%	14.38%	17.43%	20.66%	23.95%	26.48%	28.36%				
Last Year	1.29%	4.76%	6.73%	8.22%	10.37%	12.99%	15.00%	17.64%	19.65%	22.06%	24.28%	26.45%	
Actual Month/Year	2016/10	2016/11	2016/12	2017/01	2017/02	2017/03	2017/04	2017/05	2017/06	2017/07	2017/08	2017/09	

Transicare Reporting

Crisis Services Project

		2017-10	2017-11	2017-12	2018-01	2018-02	2018-03	2018-04	2018-05	2018-06	2018-07	2018-08	2018-09	TOTAL
	Beginning Census	138	137	123	132	118	105	95	104	115	109	95	116	
	Referrals	74	67	47	46	53	69	60	85	51	44	71	48	715
	Admissions													
	Referred Admitted	34	25	21	20	14	19	27	33	24	14	37	15	283
	No Admit Client Refusal	0	1	1	0	0	3	3	1	1	2	2	4	18
	No Admit Criteria	5	3	1	1	3	2	0	1	1	3	5	1	26
	No Admit Structural	3	2	3	5	2	12	10	20	2	2	5	2	68
	Pending	32	36	21	20	34	33	20	30	23	23	22	26	320
	<i>Prior Pending</i>													
	Pending Admitted	16	5	11	23	10	12	16	12	16	11	18	8	158
	No Admit Client Refusal	2	3	1	3	0	0	0	0	3	0	2	1	15
	No Admit Criteria	1	3	1	3	3	11	4	0	0	1	1	0	28
	No Admit Structural	19	17	12	5	7	17	8	12	5	2	7	6	117
	Total Admissions	50	30	32	43	24	31	43	45	40	25	55	23	441
	Discharges													
	Success Transfer	7	7	5	3	9	9	9	4	4	7	8	5	77
	DC Midterm Disengage	19	14	9	16	12	10	6	9	13	15	12	12	147
	DC Rapid Disengage	13	14	4	23	12	13	14	13	17	11	4	18	156
	DC Structural	12	9	5	15	4	9	5	8	12	6	10	8	103
	Total Discharged	51	44	23	57	37	41	34	34	46	39	34	43	483
	Active End Of Month	137	123	132	118	105	95	104	115	109	95	116	96	
	Outcome Data													
	<i>Terrell State Hospital Linkages</i>													
	≤7 Connect To Prescriber	4	4	2	13	5	3	5	7	10	4	14	4	75
	Missed ≤7 Day Connect	5	2	2	4	1	4	2	1	2	0	1	0	24
	≤30 Connect To Prescriber	4	4	2	13	5	4	5	7	10	4	14	4	76
	Missed ≤30 Day Connect	5	2	2	4	1	4	2	1	2	0	1	0	24
	Total Missed Metric	5	2	2	4	1	4	2	1	2	0	1	0	24
	Total Released	9	6	4	17	6	7	7	8	12	4	15	4	99

	Cummulative ≤7 Connect %	44.4%	53.3%	52.6%	63.9%	66.7%	63.3%	64.3%	67.2%	69.7%	71.3%	74.7%	75.8%	75.8%
	Cummulative ≤30 Connect %	44.4%	53.3%	52.6%	63.9%	66.7%	65.3%	66.1%	68.8%	71.1%	72.5%	75.8%	76.8%	76.8%
	Missed Metric	55.6%	46.7%	47.4%	36.1%	33.3%	36.7%	35.7%	32.8%	30.3%	28.8%	25.3%	24.2%	24.2%
	<i>Unduplicated Served</i>													
	Monthly Unduplicated	204	189	174	181	158	164	156	168	167	150	162	152	
	DSRIP YTD Unduplicated Served	204	254	294	339	369	418	461	512	557	590	634	667	
	<i>Encounter Data</i>													
	F2F Encounter	1113	988	752	1005	953	1043	1022	1113	946	897	754	769	11355
	Care Coord	110	77	62	66	71	76	72	60	64	55	38	24	775
	Total	1223	1065	814	1071	1024	1119	1094	1173	1010	952	792	793	12130

Forensic Diversion Unit (FDU) Report

	Jan-18	Feb-18	Mar-18	Apr-18	May-18	Jun-18	Jul-18	Aug-18	Sep-18	Oct-18	Nov-18	Dec - 18
Beginning Census	42	47	48	51	53	51	51	45	50	52		
Number of Referrals Received from CSP												
Adapt	7	16	13	9	7	4	3	6	5	8		
Metrocare	0		0	0	0	1	0	1	0	0		
Transicare	0		0	0	0	0	0	0	0	0		
DA	1		0	0	0	1	0	1	2	1		
Number of Admissions	8	10	11	9	7	6	2	1	4	5		
Number Discharged	3	13	8	10	4	4	5	3	5	14		
Number not admitted due to:												
Client qualifies for ACT	0		1	0	2	0	0	0	0	0		
Client qualifies for other programs	0	2	0	1	2	1	0	1	0	0		
Client didn't meet level of need required	0	3	1	2	4	0	1	1	0	1		
Other reasons	0	2	1	1	0	3	1	1	2	0		
Average Service Utilization:												
Average hours seen	9.03	49.05	13.51	12.65	12.82	10.72	12.49	13.81	10.47	11.08		
Encounter Breakdown:												
Face to Face	269	293.53	338	541.25	539.25	524	525.35	530	438	442		
Service Coordination	676	692	798	542.25	541.25	522	525.75	532	440	466		
Number of clients accessing:												
Emergency Room (medical)	2	2	0	1	1	2	4	3	2	3		
23-hour observation (psych)		1	0	0	2	1	1	2	0	1		
Inpatient (med/ psych)	3		0	0	0	0	3	1	0	0		
Jail book-in	0		1	2	3	1	2	5	2	2		
Reasons for Discharge:												
Graduate		1	2	2	0	0	2	0	0	0		
Client Disengagement		7	3	1	3	3	0	0	5	5		
Extended Jail stay (case-by-case basis)	3	2	2	4	1	3	2	0	0	3		
Other Intervening factors		3	1	1	3	1	1	3	0	6		
End of Month Stats:												
Number of Active FDU clients end of month	47	44	41	46	42	43	42	46	48	46		
Number of Unique Consumers	47	48	51	53	51	51	45	50	52	52		
# of clients waiting to be released from jail	9	11	10	8	3	8	3	4	4	6		
Average Length of stay on FDU (month)	6.67	6.22	5.31	4.48	4.54	4.6	5.26	5.38	5.54	5.36		
Maximum Census	46	46	46	46	46	46	46	46	46	50		

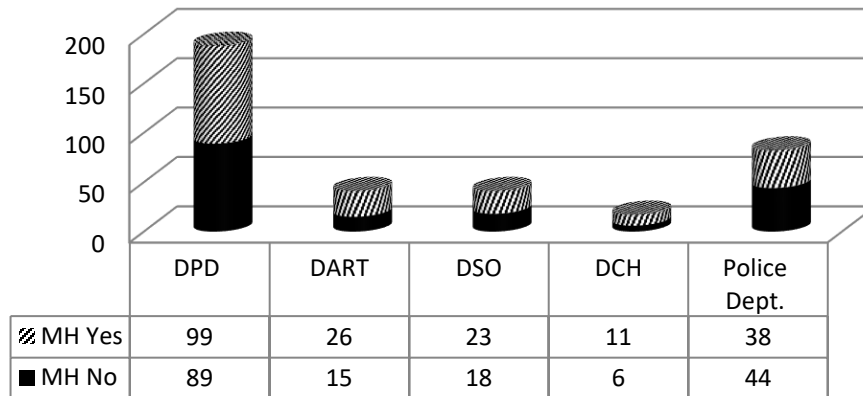
the consumers on the "waiting" list are being actively seen in jail until release

Jail Competency Stats 2018												
	Jan	Feb	March	April	May	June	July	Aug	Sept	Oct	Nov	Dec
Active												
New Evals - Incompetent	61	45	63	50	50	42	38	69	58	46		
Waiting for the hospital - End of month	132	133	134	137	129	148	130	139	127	135		
Maximum Secure Facility	72	69	65	68	75	80	75	70	63	70		
Non-Maximum Secure Facility	60	64	69	69	54	68	55	69	64	65		
Returned to jail from the hospital	22	36	28	21	30	28	30	28	26	16		
Closed												
New Evals - Competent	37	35	40	60	34	43	31	51	32	43		
Admitted to the state hospital	35	36	38	47	41	42	34	38	45	25		
Maximum Secure Facility	6	8	5	4	1	6	8	11	7	2		
Non-Maximum Secure Facility	29	28	33	43	40	36	26	27	38	23		
Total Competency Evaluations Completed	98	80	103	110	84	85	69	120	90	89		
Average Wait Times												
Non-Maximum Secure Hospital -- Males							76 days					
Non-Maximum Secure Hospital -- Females							15 days					
Maximum Secure Hospital: Article 17.032(a) charges -- Males							361 days					
Maximum Secure Hospital: Article 17.032(a) charges -- Females							129 days					
Maximum Secure Hospital: NGRI -- Males							NGRI cases will now take priority for admission to Vernon State Hospital. Expected admission time is < 21 days					
Maximum Secure Hospital: NGRI -- Females												
*Note: All individuals who are found Not Guilty by Reason of Insanity (NGRI) or found incompetent to stand trial with an offense listed in Article 17.032(a) of the Code of Criminal Procedure must be sent to the maximum-secure hospital in Vernon. All wait times are approximate.												

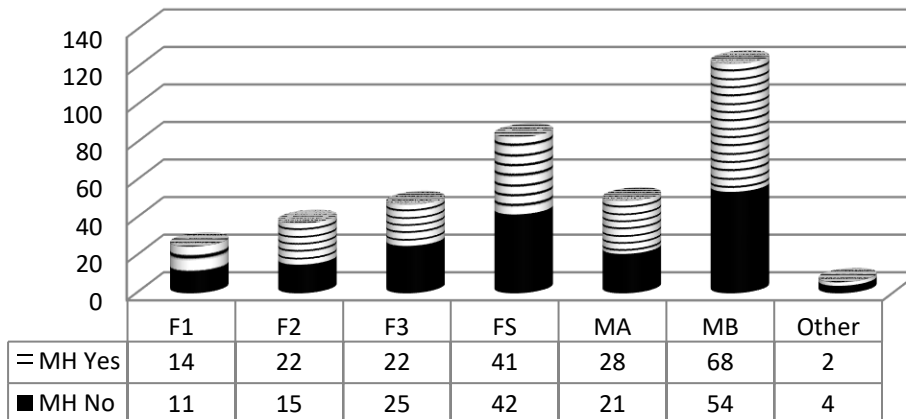
2018
360
15,126
41

Unique Individuals
Days In Jail
Average Number of Days in Jail

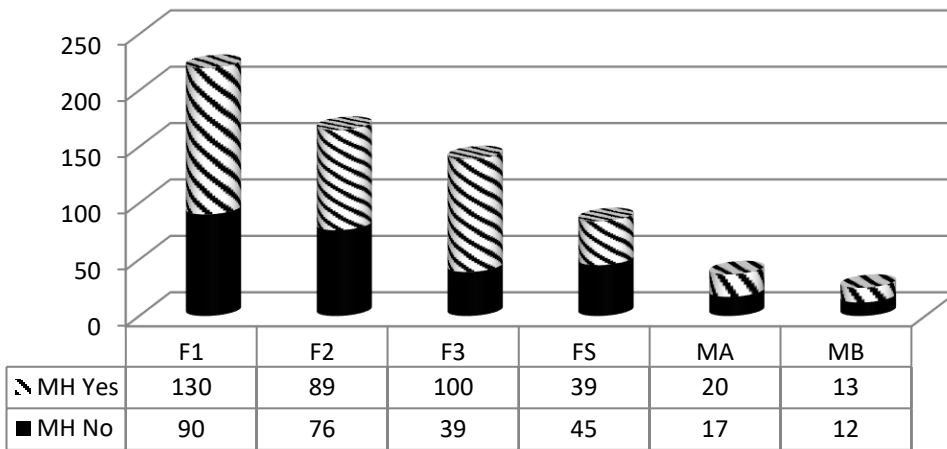
Arresting Agency



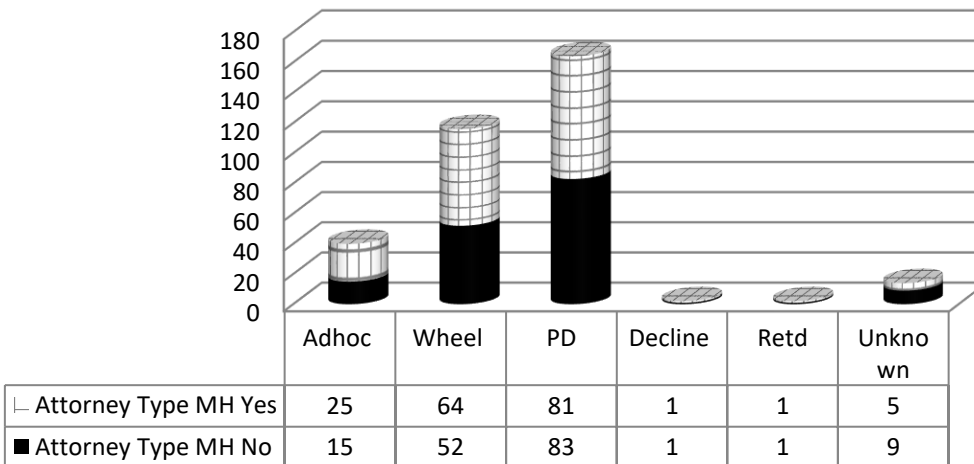
Degree of Offense



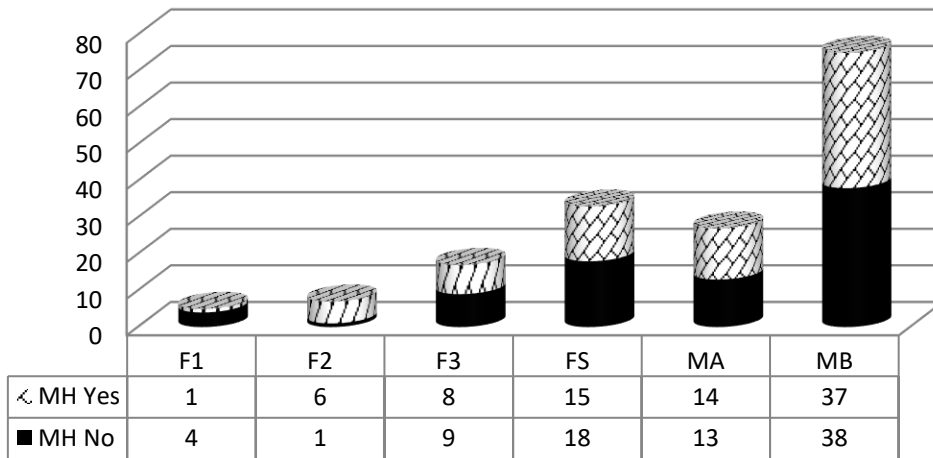
Avg. Days in Jail



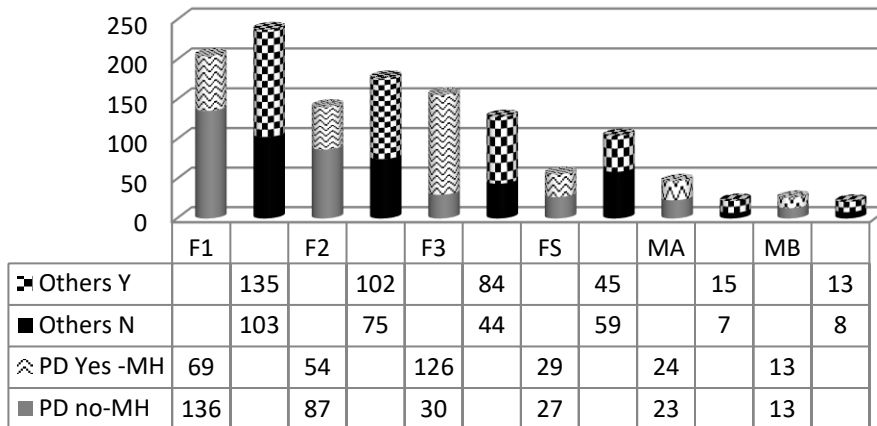
Attorney Type



PD Degree of Offense



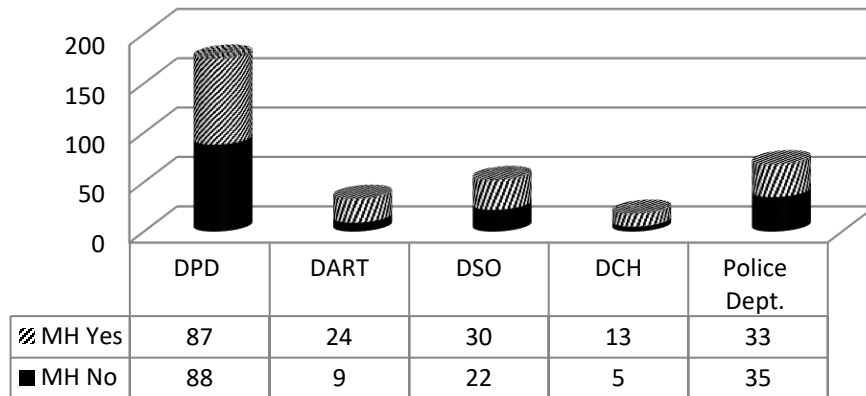
Avg. Days in Jail Attorney Type



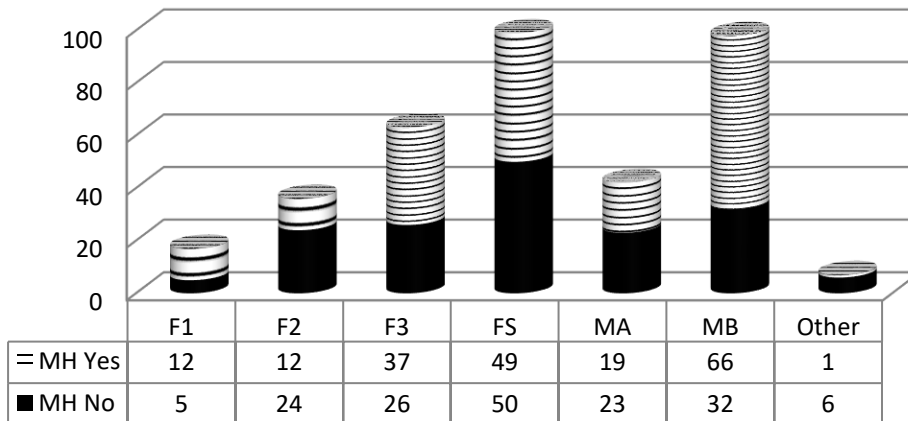
2018
352
16,286
45

Unique Individuals
Days In Jail
Average Number of Days in Jail

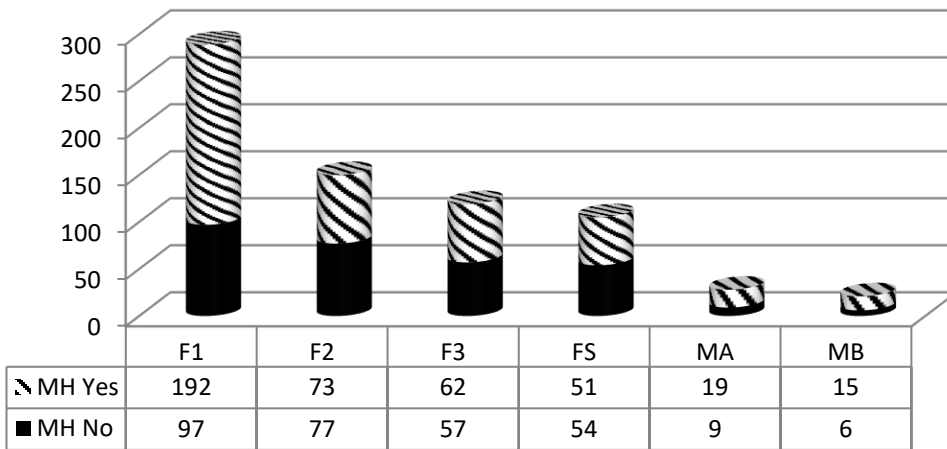
Arresting Agency



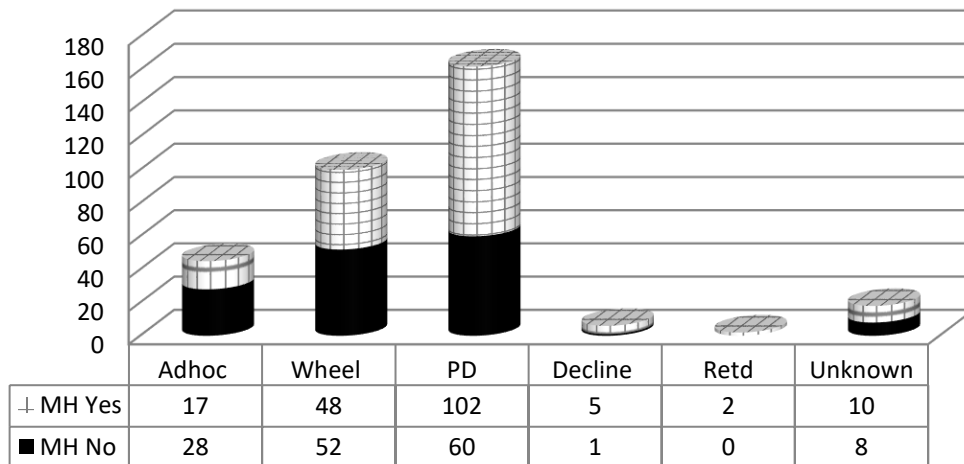
Degree of Offense



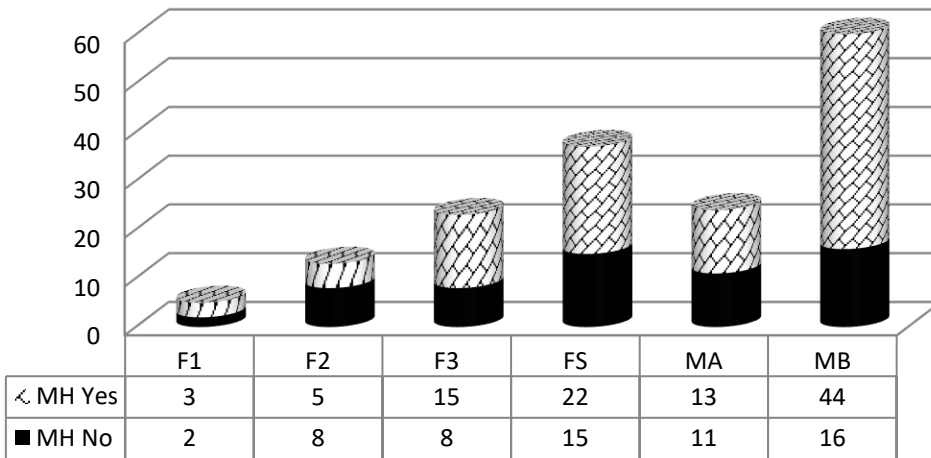
Avg. Days in Jail



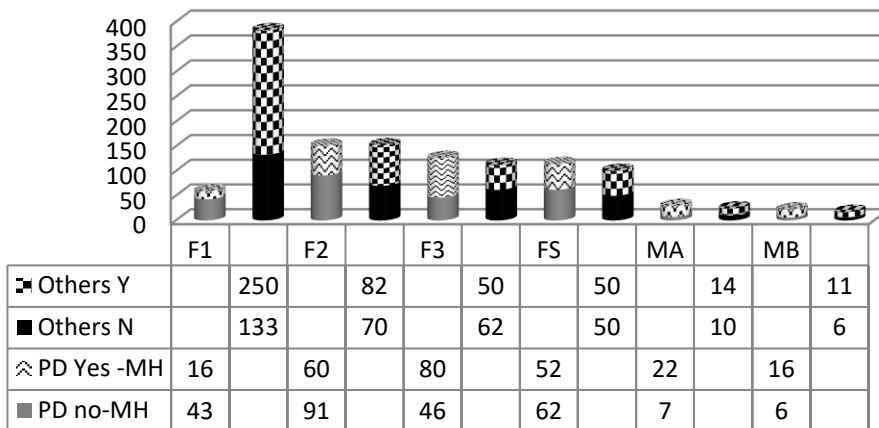
Attorney Type



PD Degree of Offense



Avg. Days in Jail Attorney Type



Monthly JIMI/STELLA Jail Mental Health Flag Report								
2017 TOTALS								
	Total Bookins	Total Unique Individuals Flagged for Mental Health	Mental Health Flag Categories:	NorthStar ID	NTBHA ID	TLETS Match	PAP Flag	MH AIS Flag
YEARLY 2017 TOTAL	66,154	31,849		11,324	4,028	14,787	3,127	22,826
			Percentages	35.56%	12.65%	46.43%	9.82%	71.67%
2018 TOTALS								
MONTH	Total Bookins	Total Unique Individuals Flagged for Mental Health	Mental Health Flag Categories:	NorthStar ID	NTBHA ID	TLETS Match	PAP Flag	MH AIS Flag
Jan-18	5,318	3,349		966	525	1,368	355	2109
Feb-18	4,715	2,992		927	517	1,299	333	1920
			Percentages	30.98%	17.28%	41.98%	11.13%	64.17%
Mar-18	5,465	3,449		967	555	1,262	401	2,169
			Percentages	28.04%	16.09%	36.59%	11.63%	62.89%
Apr-18	5,394	3,406		1,384	531	1,463	240	2,183
			Percentages	40.63%	15.59%	42.95%	7.05%	64.09%
May-18	5,625	3,607		1,075	678	1,537	387	2,260
			Percentages	29.80%	18.80%	42.61%	10.73%	62.66%
Jun-18	5,697	3,539		1,092	854	1,440	356	2,133
			Percentages	30.86%	24.13%	40.69%	10.06%	60.27%
Jul-18	5,790	3,632		1,118	855	1,540	363	2,174
			Percentages	30.78%	23.54%	42.40%	9.99%	59.86%
Aug-18	6,079	3,680		1,140	929	1,619	402	1,994
			Percentages	30.98%	25.24%	43.99%	10.92%	54.18%
Sep-18	5,216	3,151		1,003	802	1,349	362	1,883
			Percentages	31.83%	25.45%	42.81%	11.49%	59.76%
Oct-18	5,154	3,199		882	767	1,452	342	1,848
			Percentages	27.57%	23.98%	45.39%	10.69%	57.77%
*Note: Data listed above is reflective of unique individuals who receive at least one mental health flag from one of the identified categories. Individuals may be flagged in more than one category. Percentages above are indicative of that specific mental health flag category only.								
Mental Health Flag Categories Explained								
NorthStar ID:	Individuals who have an identified service utilization history and service ID from the previous mental health Northstar system							
NTBHA ID:	Individuals who have an identified service utilization and service ID from the current mental health NTBHA system							
TLETS Match:	Texas Law Enforcement Telecommunications System, Flags sent from DPS that shows individuals who have any history of state-paid MH service							
PAP Flag:	Parkland Jail Health Psychological Assessment Program							
MH AIS Flag:	Individuals flagged for mental health concerns through the bookin process (from the gold form)							

HARRY INGRAM			FY2018 ATLAS STATISTICS										203/HAWTHORNE				
MONTH	BEGINNING # OF PENDING CASES	+NEW CASES RECEIVED THIS MONTH	=TOTAL CASES	TBJ	TBC	PLEAS	REV	GRADUATES	PROBATION MODIFICATIONS	DISMISSALS	OTHERS	TOTAL DISPOSITIONS	ENDING # PENDING CASES **	CURRENT ATLAS PARTICIPANTS	CURRENT PARTICIPANTS IN CUSTODY	FORMER ATLAS PARTICIPANTS	BOND
August	39	4	43	0	0	0	0	9	1	0	0	10	33	17	1	0	16

HARRY INGRAM		FY2018 MISDEMEANOR MENTAL HEALTH COURT STATS										CCCAP1/WADE		
MONTH	BEGINNING # OF PENDING CASES	Rediverts	+NEW CASES RECEIVED THIS MONTH	=TOTAL CASES	TBJ	TBC	PLEAS	DISMISSAL	OTHER	TOTAL DISPO SITION S	ENDING # PENDIN G CASES **	CURRE NT PARTIC IPANTS	NUMBE R OF GRADU ATES	BOND** *
August	111	0	9	120	0	0	1	9	4	14	106	18	4	18

HARRY INGRAM			FY2018 S.E.T. STATISTICS										291st				
MONTH	BEGINNING # OF PENDING CASES	+NEW CASES RECEIVED THIS MONTH	=TOTAL CASES	TBJ	TBC	PLEAS	REV	GRADUATES	PROBATION MODIFICATIONS	DISMISSALS	OTHERS	TOTAL DISPOSITIONS	ENDING # PENDING CASES **	CURRENT PARTICIPANTS	CURRENT PARTICIPANTS IN CUSTODY	FORMER PARTICIPANTS	BOND
August	72	8	80	0	0	0	0	0	0	0	15	15	65	21	1	1	20

August FY2018 MHPD STATS												
	BEGINNING # OF PENDING CASES	+NEW CASES RECEIVED THIS MONTH	=TOTAL CASES	TRIALS	PLEAS	COND. DISM.	REVO-CATION	DISMISSALS	INCOMPETENT	REFERRALS	OTHER COUNSEL APPT.	TOTAL CLOSED
R. LENOX	215	19	234	0	5	5	0	2	0	2	1	15
L. TAYLOR	245	14	259	0	11	2	0	0	0	0	7	20

FY2018 FELONY COMPETENCY STATISTICS																
	BEGINNING # OF CASES	NEW CASES THIS MONTH	TBJ	TBC	Alt. Trial Dispos.	PLEAS	REVO-CATIONS	DISMISSALS	PROBATION	COMP. HRG.	EXTENSIONS	CIVIL COMMIT.	MHMR REFERRAL	CONSULTS	OTHER	ENDING # OF PEOPLE IN OCR
M. Harden	139	13	0	0	0	9	1	2	3	7	3	0	0	0	4	8
R. Scott	13	4	0	0	0	7	0	0	0	1	0	0	0	0	1	L

RANDALL SCOTT			FY2018 MISDEMEANOR COMPETENCY STATISTICS													
MONTH	BEGINNING # OF CASES	NEW CASES THIS MONTH	TBJ	TBC	Alt. Trial Dispos.	PLEAS	REVO-CATIONS	DISMISSALS	PROBATION	COMP. HRG.	EXTENSIONS	CIVIL COMMIT.	MHMR REFERRAL	CONSULTS	OTHER	ENDING # OF PEOPLE IN OCR
August	178	57	0	0	0	3	0	64	0	45	0	3	0	0	1	19

August MI Court																			
MONTH	TOTAL NEW CASES RECEIVED	NEW CLIENTS AT GREEN OAKS	NEW CLIENTS AT MEDICAL CENTER MCKINNEY	NEW CLIENTS AT PARKLAND	NEW CLIENTS AT DALLAS BEHAVIORAL HEALTH	NEW CLIENTS AT GARLAND BEHAVIORAL	NEW CLIENTS AT ZALE LIPSHY	NEW CLIENTS AT SUNDANCE BEHAVIORAL HEALTHCARE	NEW CLIENTS AT HICKORY TRAILS	NEW CLIENTS AT METHUEN DISTRICT RICHARDSON	NEW CLIENTS AT DALLAS PRESBYTERIAN	NEW CLIENTS AT VA	NEW CLIENTS AT WELLS RIDGE	NEW CLIENTS AT TIMBER LAWN	NEW CLIENTS AT GLEN OAKS	PROBABLE CAUSE HEARINGS HELD	NO CONTEST COMMIT	CONTESTED COMMIT	FORCED MEDS HEARING IN COURT
L. ROBERTS	118	51	9	0	0	33	0	0	0	0	0	0	1	0	24	4	0	5	5
L. TAYLOR	104	0	0	74	17	0	3	0	8	0	2	0	0	0	0	2	1	5	5
R. BLACK	32	0	0	0	24	0	0	0	8	0	0	0	0	0	0	3	0	1	1

RANDA BLACK			MI COURT						*Number of new cases decreased due to increase in 46B cases.										
MONTH	NEW CLIENTS	PROBABLE CAUSE HEARINGS HELD	NO CONTEST COMMIT TO TSH	CONTESTED COMMIT TO TSH	RECOMMENDMENTS	MEDICATION HEARINGS	OUTPATIENT	JURY TRIAL											
August	12	1	1	7	8	11	0	0											

MICHAELA HIMES			MHPR BOND STATS				
MONTH	INITIAL ELIGIBILITY DAILY LIST	BOND APPOINTMENTS FROM DAILY LIST	MHPR BOND HEARING - GRANTED	MHPR BOND HEARING -DENIED	TOTAL HEARINGS		
August	1508	230	68	12	80		

HARRY INGRAM			FY2018 ATLAS STATISTICS										203/HAWTHORNE				
MONTH	BEGINNING # OF PENDING CASES	+NEW CASES RECEIVED THIS MONTH	=TOTAL CASES	TBJ	TBC	PLEAS	REV	GRADUATES	PROBATION MODIFICATIONS	DISMISSALS	OTHERS	TOTAL DISPOSITIONS	ENDING # PENDING CASES **	CURRENT ATLAS PARTICIPANTS	CURRENT PARTICIPANTS IN CUSTODY	FORMER ATLAS PARTICIPANTS	BOND
September	33	11	44	0	0	0	0	0	0	0	2	2	42	22	1	0	21

HARRY INGRAM		FY2018 MISDEMEANOR MENTAL HEALTH COURT STATS										CCCAP1/WADE		
MONTH	BEGINNING # OF PENDING CASES	Rediverts	+NEW CASES RECEIVED THIS MONTH	=TOTAL CASES	TBJ	TBC	PLEAS	DISMISSAL	OTHER	TOTAL DISPO SITION S	ENDING # PENDIN G CASES **	CURRE NT PARTIC IPANTS	NUMBE R OF GRADU ATES	BOND** *
September	106	0	8	114	0	0	5	0	1	6	108	18	0	19

HARRY INGRAM			FY2018 S.E.T. STATISTICS										291st				
MONTH	BEGINNING # OF PENDING CASES	+NEW CASES RECEIVED THIS MONTH	=TOTAL CASES	TBJ	TBC	PLEAS	REV	GRADUATES	PROBATION MODIFICATIONS	DISMISSALS	OTHERS	TOTAL DISPOSITIONS	ENDING # PENDING CASES **	CURRENT PARTICIPANTS	CURRENT PARTICIPANTS IN CUSTODY	FORMER PARTICIPANTS	BOND
September	65	1	66	0	0	0	0	0	0	0	4	4	62	20	0	0	20

September			FY2018 MHPD STATS									
	BEGINNING # OF PENDING CASES	+NEW CASES RECEIVED THIS MONTH	=TOTAL CASES	TRIALS	PLEAS	COND. DISM.	REVO-CATION	DISMISSALS	INCOMPETENT	REFERRALS	OTHER COUNSEL APPT.	TOTAL CLOSED
R. Lenox	219	20	239	0	0	7	0	2	0	9	3	21
L. Strather*												

deadline.

FY2018 FELONY COMPETENCY STATISTICS																
MONTH	BEGINNING # OF CASES	NEW CASES THIS MONTH	TBJ	TBC	Alt. Trial Dispos.	PLEAS	REVO-CATION S	DISMISSALS	PROBATION	COMP. HRG.	EXTENSIONS	CIVIL COMMIT.	MHMR REFERRAL	CONSULTS	OTHER	ENDING # OF PEOPLE IN OCR
M. Harden	134	11	0	0	0	0	1	2	4	7	1	0	0	2	2	9
R. Scott	14	4	0	0	0	0	0	0	0	0	0	0	0	0	2	0

RANDALL SCOTT			FY2018 MISDEMEANOR COMPETENCY STATISTICS													
MONTH	BEGINNING # OF CASES	NEW CASES THIS MONTH	TBJ	TBC	Alt. Trial Dispos.	PLEAS	REVO-CATION S	DISMISSALS	PROBATION	COMP. HRG.	EXTENSIONS	CIVIL COMMIT.	MHMR REFERRAL	CONSULTS	OTHER	ENDING # OF PEOPLE IN OCR
September	164	29	0	0	0	0	0	13	0	23	3	0	1	0	4	18

September			MI Court																
MONTH	TOTAL NEW CASES RECEIVED	NEW CLIENTS AT GREEN OAKS	NEW CLIENTS AT MEDICAL CENTER MCKINNEY	NEW CLIENTS AT PARKLAND	NEW CLIENTS AT DALLAS BEHAVIORAL HEALTH	NEW CLIENTS AT GARLAND AND BEHAVIORAL	NEW CLIENTS AT ZALE LIPSHY	NEW CLIENTS AT SUNDANCE BEHAVIORAL HEALTHCARE	NEW CLIENTS AT HICKORY TRAILS	NEW CLIENTS AT METHUEN DISTRICT RICHARDSON	NEW CLIENTS AT DALLAS PRESBYTERIAN	NEW CLIENTS AT VA	NEW CLIENTS AT WELLB RIDGE	NEW CLIENTS AT TIMBER LAWN	NEW CLIENTS AT GLEN OAKS	PROBABLE CAUSE HEARINGS HELD	NO CONTEST COMMIT	CONTESTED COMMIT	FORCED MEDS HEARING IN COURT
L. Roberts	99	43	7			30		0		3			0	0	16	5	1	6	5
L. Strather*																			
R. Black	36	0	0	0	12	0	0	0	24	0	0	0	0	0	0	5	0	1	0

RANDA BLACK			MI COURT						*Number of new cases decreased due to increase in 46B cases.	
MONTH	NEW CLIENTS	PROBABLE CAUSE HEARINGS HELD	NO CONTEST COMMIT TO TSH	CONTESTED COMMIT TO TSH	RECOMMENDATIONS	MEDICATION HEARINGS	OUTPATIENT	JURY TRIAL		
September	11	1	1	8	5	10	0	0		

MICHAELA HIMES			MHPR BOND STATS		
	INITIAL ELIGIBILITY DAILY LIST	BOND APPOINTMENTS FROM DAILY LIST	MHPR BOND HEARING - GRANTED	MHPR BOND HEARING -DENIED	TOTAL HEARINGS
MONTH					
September	1252	169	44	12	56

HARRY INGRAM			FY2018 ATLAS STATISTICS										203/HAWTHORNE				
MONTH	BEGINNING # OF PENDING CASES	+NEW CASES RECEIVED THIS MONTH	=TOTAL CASES	TBJ	TBC	PLEAS	REV	GRADUATES	PROBATION MODIFICATIONS	DISMISSALS	OTHERS	TOTAL DISPOSITIONS	ENDING # PENDING CASES **	CURRENT ATLAS PARTICIPANTS	CURRENT PARTICIPANTS IN CUSTODY	FORMER ATLAS PARTICIPANTS	BOND
October	42	1	43	0	0	0	0	6	0	0	1	7	36	17	1	0	1

HARRY INGRAM		FY2018 MISDEMEANOR MENTAL HEALTH COURT STATS										CCCAP1/WADE		
MONTH	BEGINNING # OF PENDING CASES	Rediverts	+NEW CASES RECEIVED THIS MONTH	=TOTAL CASES	TBJ	TBC	PLEAS	DISMISSAL	OTHER	TOTAL DISPO SITION S	ENDING # PENDIN G CASES **	CURRE NT PARTIC IPANTS	NUMBE R OF GRADU ATES	BOND** *
October	26	0	6	32	0	0	2	4	2	8	24	16	4	15

HARRY INGRAM			FY2018 S.E.T. STATISTICS										291st				
MONTH	BEGINNING # OF PENDING CASES	+NEW CASES RECEIVED THIS MONTH	=TOTAL CASES	TBJ	TBC	PLEAS	REV	GRADUATES	PROBATION MODIFICATIONS	DISMISSALS	OTHERS	TOTAL DISPOSITIONS	ENDING # PENDING CASES **	CURRENT PARTICIPANTS	CURRENT PARTICIPANTS IN CUSTODY	FORMER PARTICIPANTS	BOND
October	43	3	46	0	0	0	0	2	0	0	7	9	37	22	0	0	2

October FY2018 MHPD STATS												
	BEGINNING # OF PENDING CASES	+NEW CASES RECEIVED THIS MONTH	=TOTAL CASES	TRIALS	PLEAS	COND. DISM.	REVO-CATION	DISMISSALS	INCOMPETENT	REFERRALS	OTHER COUNSEL APPT.	TOTAL CLOSED
R. Lenox	219	15	234	0	2	3	1	1	1	2	9	19
L. Strather*												

deadline.

FY2018 FELONY COMPETENCY STATISTICS																
MONTH	BEGINNING # OF CASES	NEW CASES THIS MONTH	TBJ	TBC	Alt. Trial Dispos.	PLEAS	REVO-CATIONS	DISMISSALS	PROBATION	COMP. HRG.	EXTENSIONS	CIVIL COMMIT.	MHMR REFERRAL	CONSULTS	OTHER	ENDING # OF PEOPLE IN OCR
M. Harden	136	11	0	0	0	0	0	2	3	14	2	0	0	0	2	11
R. Scott	8	2	0	0	0	1	2	0	1	4	1	0	0	0	4	1

RANDALL SCOTT			FY2018 MISDEMEANOR COMPETENCY STATISTICS													
MONTH	BEGINNING # OF CASES	NEW CASES THIS MONTH	TBJ	TBC	Alt. Trial Dispos.	PLEAS	REVO-CATIONS	DISMISSALS	PROBATION	COMP. HRG.	EXTENSIONS	CIVIL COMMIT.	MHMR REFERRAL	CONSULTS	OTHER	ENDING # OF PEOPLE IN OCR
October	181	46	0	0	0	3	0	17	0	22	6	2	1	0	2	21

October MI Court																			
MONTH	TOTAL NEW CASES RECEIVED	NEW CLIENTS AT GREEN OAKS	NEW CLIENTS AT MEDICAL CENTER MCKINNEY	NEW CLIENTS AT PARKLAND	NEW CLIENTS AT DALLAS BEHAVIORAL HEALTH	NEW CLIENTS AT GARLAND AND BEHAVIORAL	NEW CLIENTS AT ZALE LIPSHY	NEW CLIENTS AT SUNDANCE BEHAVIORAL HEALTHCARE	NEW CLIENTS AT HICKORY TRAILS	NEW CLIENTS AT METHUEN DISTRICT RICHARDSON	NEW CLIENTS AT DALLAS PRESBYTERIAN	NEW CLIENTS AT VA	NEW CLIENTS AT WELLB RIDGE	NEW CLIENTS AT TIMBER LAWN	NEW CLIENTS AT GLEN OAKS	PROBABLE CAUSE HEARINGS HELD	NO CONTEST COMMIT	CONTESTED COMMIT	FORCED MEDS HEARING IN COURT
L. Roberts	86	26	8	0	0	28	0	0	0	3	0	0	0	0	21	3	0	6	6
C. Cox	117	0	0	102	1	0	8	0	2	0	4	0	0	0	0	2	0	6	6
R. Black	26	0	0	0	11	0	0	0	15	0	0	0	0	0	0	0	0	1	1

RANDA BLACK			MI COURT						*Number of new cases decreased due to increase in 46B cases.									
MONTH	NEW CLIENTS	PROBABLE CAUSE HEARINGS HELD	NO CONTEST COMMIT TO TSH	CONTESTED COMMIT TO TSH	RECOMMENDMENTS	MEDICATION HEARINGS	OUTPATIENT	JURY TRIAL										
October	16	0	2	6	5	12	0	0										

MICHAELA HIMES			MHPR BOND STATS				
	INITIAL ELIGIBILITY DAILY LIST	BOND APPOINTMENTS FROM DAILY LIST	MHPR BOND HEARING - GRANTED	MHPR BOND HEARING -DENIED	TOTAL HEARINGS		
MONTH							
October	1274	175	31	12	43		

District Attorney Mental Health Division Stats
SEPT/OCT/NOV

Chris Hawkins

135 cases pending
7 New CDs
21 Pleas
41 CD's Pending
15 Dismissals
11 Comp Rest
1 NGRI

Blake Reyna

95 Cases Pending
27 Cases Pled
17 New CDs
47 Pending CDs
18 Dismissals

Personal Stats - Felony Cases Only																
Prosecutor		Hire Date														Court
Kendall McKimmey		2/11/2013													MENTAL HEALTH	
2018 Term	Jury Leads*	Jury Picks	Non-Jury Trials	Pleas	Dism	CD-Priv.	CD-P.D.	CD check-in	OCR check-in	NGRI-IP Hear	OP check-in	Comp Hear	Total Dispos	Assigned to you		
January					2				31	4	1	44	2	App'd	Unapp'd	
February					2				38	6	4	41	2			
March				1	1	1		1	37	5	3	79	2	430		
January Term Total				1	5	1	0	1	106	15	8	164	6			
April					6		1		27	5	4	35	6			
May				1	4	3		1	23	2	4	79	5			
June					1			4	20	5	2	40	1	420		
April Term Total				1	11	3	1	5	70	12	10	154	12			
July				1	3	0	1	4	19	7	7	36	4			
August				0	5	0	0	4	13	5	0	54	5			
September				0	9	0	0	0	30	5	0	59	9	420		
July Term Total				1	17	0	1	8	62	17	7	149	18			
October				0	3	0	0	2	33	0	0	60	3			
November																
December														420		
October Term Total																
Y-T-D Total	0	0		3	36	4	2	16	272	44	25	527	39			

Please Note: *Do Not Include Picks In Total Dispositions - Do Not Include Sanity Trials in Leads

List 2018 Jury Trials

Defendant	Offense	Verdict									Trial Date	Sentence

The Bridge	2017	2017	2018	2018	2018	2018	2018	2018	2018	2018	2018	2018	
	Nov.	Dec.	Jan.	Feb.	March	April	May	June	July	August	September	October	AVG.
Bridge Night Shelter	480	478	496	439	486	451	485	474	470	455	475	458	479
Off-site Night Shelter Coordination	452	615	506	501	478	422	396	360	452	420	493	506	534
Care Coordination	964	955	1006	944	932	859	827	770	790	853	940	1018	960
Peer Support Services	424	337	468	271	315	343	287	225	292	208	179	182	381
Job Placements	27	28	19	26	36	20	32	27	19	33	20	43	28
Housing Placements	32	24	25	20	25	18	22	23	19	33	17	22	28
Metrocare Mental Health Serv.	424	269	337	287	441	305	273	271	192	212	170	189	347
Metrocare Chemical Dep. Serv.	20	22	22	22	15	22	19	26	27	24	18	25	21
Parkland Clinic*	405	585	561	551		675	622	568	575	575	363		495
Judicial Re-Entry	8	2	11	6	6	3	10	5	10	15	9	6	8
Jail Release (General)	25	14	25	28	29	22	23	15	10	14	13	13	20

Each category represents *unduplicated guests* , not totals served.

*exception - Parkland Clinic number is for total visits.

NAME OF MHMR PROGRAM: Metrocare Services
PROGRAM: SNOP

MONTH OF REPORT:08_2018

DATE SUBMITTED: 09_2018

	ATLAS	Post-DDRTC	STAC	Misd.	PRIDE	DDRTC	PROBATION ICM	PAROLE ICM
1. Number of Offenders served at the beginning of the month:	16	29	20	14	1	57	50	95
2. Number of Referrals received:	0	3	2	4	0	3	11	9
3. Number of Assessments:	0	3	2	4	0	13	11	9
4. Number of Admissions:	0	3	2	4	0	12	8	9
5. Average length of stay by months:	2.87	2.16	2.18	2.54	2.55	N/A	4.80	4.09
5. a. Average hours served:	9.19	7.42	5.62	9.06	7.75	7.22	4.49	4.95
6. Services Utilized:	0	0	0	0	0	4	0	0
6. a. Visits to ER (medical)	0	0	0	0	0	0	0	0
6. b. 23-hour Observation (psych)	0	0	0	0	0	1	0	0
6. c. Inpatient Stay (med/psych)	0	0	0	0	0	3	0	0
6. d. Jail days less than 30 days:	0	0	0	0	0	0	0	0
7. Number of Discharges:	8	4	3	6	0	15	1	12
7. a. Terminations (jail more than 30 days)	2	3	1	2	0	0	0	2
7. b. Warrants/Suspension: (medical d.c.; abscond, non-compliant)	0	0	0	0	0	8	0	7
7 c. Graduates	6	1	2	4	0	7	1	5
8. Number of Offenders served at the end of month:	14	28	19	12	1	55	57	92
9. Number of Offenders on the waiting list:	0	0	0	0	0	9	0	0
10. Minimum/Maximum Census per FTE allocation	20-25	30-38	20-25	20-25	0	60	20-25	20-25
11. % of FTE Assigned	1	1.5	1.5	1.5	0.5	3	4.5	4.5
12. Vacancy(s)	0	0	0	0	0	0	1.5	0.5

Each FTE covers 20-25

NAME OF MHMR PROGRAM: Metrocare Services
PROGRAM: SNOP

MONTH OF REPORT:09_2018

DATE SUBMITTED: 10_2018

	ATLAS	Post-DDRTC	STAC	Misd.	PRIDE	DDRTC	PROBATION ICM	PAROLE ICM
1. Number of Offenders served at the beginning of the month:	8	28	19	12	1	55	57	92
2. Number of Referrals received:	5	3	4	3	0	14	6	9
3. Number of Assessments:	5	3	4	3		11	6	9
4. Number of Admissions:	5	3	4	3	0	11	6	9
5. Average length of stay by months:	2.83	1.99	2.32	2.66	0	N/A	5.00	4.37
5. a. Average hours served:	6.82	7.08	5.03	7.86	0	30.84	4.16	3.86
6. Services Utilized:	0	0	0	0	0	3	0	0
6. a. Visits to ER (medical)	0	0	0	0	0	1	0	0
6. b. 23-hour Observation (psych)	0	0	0	0	0	1	0	0
6. c. Inpatient Stay (med/psych)	0	0	0	0	0	0	0	0
6. d. Jail days less than 30 days:	0	0	0	0	0	1	0	0
7. Number of Discharges:	1	10	2	3	1	8	2	15
7. a. Terminations (jail more than 30 days)	1	2	2	1	0	N/A	0	1
7. b. Warrants/Suspension: (medical d.c.; abscond, non-compliant)	0	2	0	2	0	3	0	11
7 c. Graduates	0	6	0	0	1	5	1	1
8. Number of Offenders served at the end of month:	12	21	21	12	0	56	61	86
9. Number of Offenders on the waiting list:	0	0	0	0	0	11	0	
10. Minimum/Maximum Census per FTE allocation	20-25	30-38	20-25	20-25	5	60	20/25	20/25
11. % of FTE Assigned	1	1.5	1.5	1.5	0.5	3	4.5	4.5
12. Vacancy(s)	0	0	0	0	0	2	1	0

Each FTE covers 20-25

NAME OF MHMR PROGRAM: Metrocare Services
PROGRAM: SNOP

MONTH OF REPORT:10_2018

DATE SUBMITTED: 11_2018

	ATLAS	Post-DDRTC	STAC	Misd.	PRIDE	DDRTC	PROBATION ICM	PAROLE ICM
1. Number of Offenders served at the beginning of the month:	12	21	21	12	0	55	61	86
2. Number of Referrals received:	2	5	2	4	0	10	10	13
3. Number of Assessments:	2	5	2	4	0	13	10	13
4. Number of Admissions:	2	5	2	4	0	13	10	13
5. Average length of stay by months:	1.85	2.19	2.21	1.71	0	N/A	4.59	4.34
5. a. Average hours served:	8.41	7.82	5.87	9.56	0	30.77	4.19	5.21
6. Services Utilized:	0	0	0	0	0	2	0	0
6. a. Visits to ER (medical)	0	0	0	0	0	0	0	0
6. b. 23-hour Observation (psych)	0	0	0	0	0	0	0	0
6. c. Inpatient Stay (med/psych)	0	0	0	0	0	1	0	0
6. d. Jail days less than 30 days:	0	0	0	0	0	1	0	0
7. Number of Discharges:	9	1	6	4	0	19	1	16
7. a. Terminations (jail more than 30 days)	3	1	1	0	0	0	2	1
7. b. Warrants/Suspension: (medical d.c.; abscond, non-compliant)	0	0	0	0	0	4	4	5
7 c. Graduates	6	0	5	4	0	15	2	7
8. Number of Offenders served at the end of month:	5	25	17	12	0	49	62	83
9. Number of Offenders on the waiting list:	0	0	0	0	0	5	0	0
10. Minimum/Maximum Census per FTE allocation	20-25	30-38	20-25	20-25	5	60	20/25	20/25
11. % of FTE Assigned	1	1.5	1.5	1.5	0.5	3	4.5	4.5
12. Vacancy(s)	0	0	0	0	0	1	1	0

Each FTE covers 20-25

Outpatient Competency Restoration Monthly Totals														
	Jan	Feb	Mar	April	May	June	July	Aug	Sept	Oct	Nov	Dec	2018 Totals	2017 Totals
Beginning of Month	21	21	23	23	22	21	19	21	22	29	34			
Misdemeanor	10	12	14	14	12	11	10	13	14	17	21			
Placed in OCR	3	5	7	7	5	3	7	7	5	6			55	68
Homeless @ admit	2	4	4	4	5	2	4	3	4	5			37	39
Dispo	1	3	7	9	6	4	4	6	2	2			44	69
Outpatient to Inpatient	0	1	3	5	4	1	1	1	1	0			17	24
Abscond	0	1	3	1	0	0	1	4	0	2			12	11
Restored and Resolved	1	1	1	3	1	2	0	0	1	0			10	21
Not restored -- Dismissed	0	0	0	0	1	1	2	1	0	0			5	13
Felony	11	9	9	9	10	10	9	8	8	12	13			
Placed in OCR	1	4	4	2	2	0	2	2	6	7			30	35
Homeless @ admit	1	4	2	2	1	0	2	1	3	4			20	10
Dispo	3	4	4	1	2	1	3	2	2	6			28	54
Outpatient to Inpatient	1	1	3	0	1	0	1	0	0	2			9	16
Abscond	1	2	0	0	0	0	1	1	0	2			7	14
Restored	1	0	1	0	0	1	1	1	2	2			9	18
Not restored -- Graduated	0	1	0	1	1	0	0	0	0	0			3	6
End of Month	21	23	23	22	21	19	21	22	29	34	34	0		

DIVERT FY 19

FY2019	Start of Month	New admissions	DAOpt-out	Unsuccessful discharge	Graduates	INS deportation	End of Month
Sept. 18	145	5	0	1	5	0	144
Oct. 18	144	14	0	6	14	0	138
Nov. 18							
Dec. 18							
Jan. 19							
Feb. 19							
Mar. 19							
Apr. 19							
May. 19							
Jun. 19							
Jul. 19							
Aug. 19							
total		19	0	7	19	0	

ATLAS Court

FY19	Start of Month	New admissions	DA Opt-out	Unsuccessful discharge	Graduates	End of Month
Sept. 18	16	6	0	2	0	20
Oct. 18	20	0	0	3	6	11
Nov. 18						
Dec. 18						
Jan. 19						
Feb. 19						
Mar. 19						
Apr. 19						
May. 19						
Jun. 19						
Jul. 19						
Aug. 19						

* Denotes that numbers are slightly lower due to missing data.

DDAC Court

FY19	Start of Month	New admissions	DA Opt-out	Unsuccessful discharge	Graduates	End of Month
Sept. 18	25	2	0	3	5	19
Oct. 18	19	6	0	0	0	25
Nov. 18						
Dec. 18						
Jan. 19						
Feb. 19						
Mar. 19						
Apr. 19						
May-18						
Jun. 19						
Jul. 19						
Aug. 19						

* Denotes that numbers are slightly lower due to missing data.

MMH Court

FY19	Start of Month	New admissions	DA Opt-out	Unsuccessful discharge	Graduates	End of Month
Sept. 18	19	3	0	2	0	20
Oct. 18	20	3	0	2	4	17
Nov. 18						
Dec. 18						
Jan. 19						
Feb. 19						
Mar. 19						
Apr. 19						
May-19						
Jun. 19						
Jul. 19						
Aug. 19						

STAC COURT

FY18	Start of Month	New Admissions	Unsuccessful discharges*	Graduates	End of Month
Sep. 18	135	14	4	0	147
Oct. 18	147	25	11	0	138
Nov. 18					
Dec. 18					
Jan. 19					
Feb. 19					
Mar. 19					
Apr. 19					
May 19					
Jun. 19					
Jul. 19					
Aug. 19					

FY18	MH Current	MH admissions	MH discharges	Graduates	End of Month
Sep. 18	28	3	0	0	30
Oct. 18	30	7	3	0	35
Nov. 18					
Dec. 18					
Jan. 19					
Feb. 19					
Mar. 19					
Apr. 19					
May 19					
Jun. 19					
Jul. 19					
Aug. 19					

*Unsuccessful discharges are those who absconded or were sent to their COJ for further treatment

STAR Court

FY19	Start of Month	New admissions	DA Opt-out	Unsuccessful discharge	Graduates	End of Month
Sept. 18	10	1	0	2	0	9
Oct. 18	9	0	0	1	0	8
Nov. 18						
Dec. 18						
Jan. 19						
Feb. 19						
Mar. 19						
Apr. 19						
May-19						
Jun. 19						
Jul. 19						
Aug. 19						

* Denotes slightly lower numbers due to incomplete data.