

Jail Population Committee Meeting
January 15, 2016 at 10:00 am
FCCB, 1st floor, Room A5

AGENDA

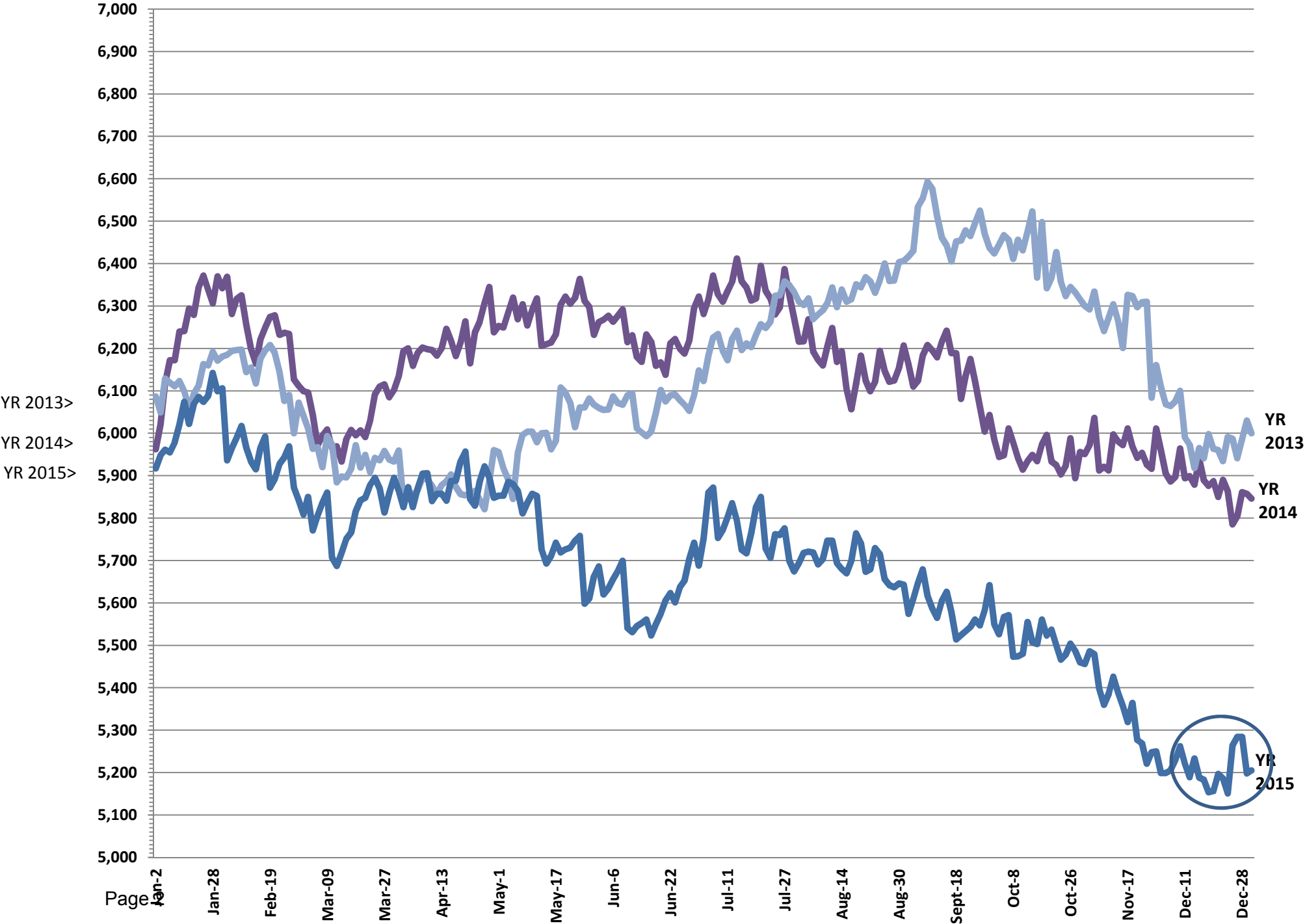
1. **Jail Population** – Snapshot 01/12 /16 - 5,341
2. Jail Population **monthly averages & graphs/charts** (pages 2 thru 6)
 - 12/15: 5,210 (-132)
 - 11/15: 5,342 (-167)
 - 10/15: 5,509 (-81)

3. November highlights: **High:** 12/29 **5,309** & **Low:** 11/26 of **5,151** Range of **158**
4. Book-in avgs. : DEC- 164; Nov - 168; Oct-184; Sep-190; Aug -252; July- 205
5. DEWR bucket comparison (page 7)
6. DEWR bucket monthly averages (page 8)
7. Release totals by category (page 9)
8. Average length of stay based on released reason (page 10)
- A. **Jail Population Management**
 1. Community Response Team/ (SJU) (page11)
 2. TDC Desk Activity Reports (page 12)
 3. Waivers by Court and by Month (page 13)
 4. Grand Jury Processing
 5. Felony Courts monthly dispositions & Pending Dispo by Court (page 14 &15)
 6. Average Jail Pop Totals for Pending Disp. By Court (page 16)
 7. DA's cases pending lab analysis (page 17)
 8. Misdemeanor Courts' initiative (page 18)
 9. Discussion items:

10. Special Programs holds: There are 165 inmates waiting for special programs.
Wilmer 60, ISF 43, RTC 10, and 9 for Mental Health
11. Pre-Trial Release monthly statistics (page 19)
12. Bond Supervision Unit monthly report (page 20)
13. Alternative Sentencing Program stats (page 21 &22)

- B. **Public Defender's Office Activities**
 1. Monthly Court Stats (page 23)
 2. Mental Health Stats (page 24)
- C. **CSCD Updates**
ATR STATS (page 25& 26)
- Mental Health**
 1. Outpatient Competency cases & State hospital monthly admissions (page 27)
 2. Mental Health Jail Diversion activities
 3. Monthly NorthSTAR Intakes (page 28)

Dallas County Jail Population 2013 - 2015



YR 2013>
YR 2014>
YR 2015>

YR 2013

YR 2014

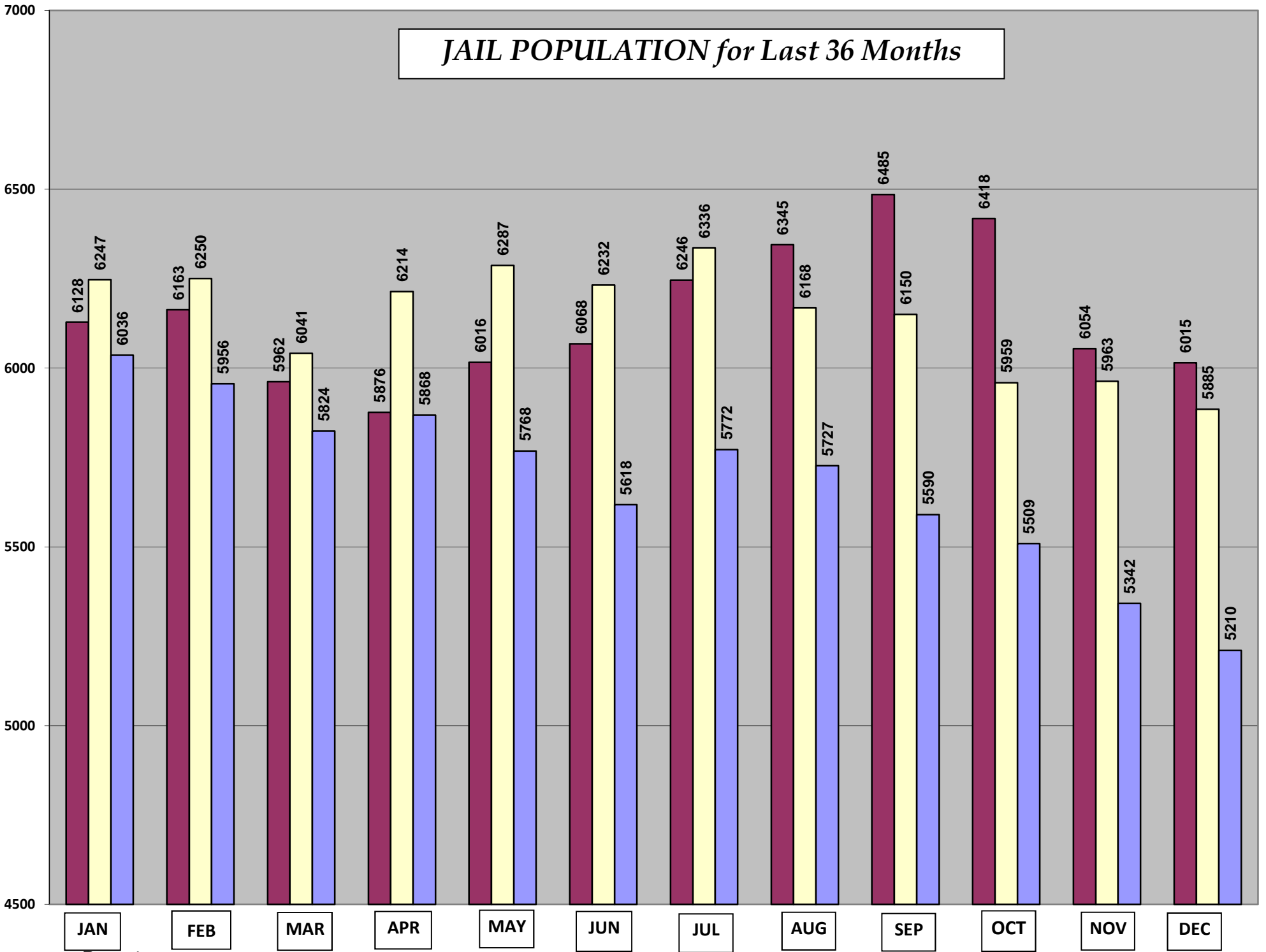
YR 2015

Dallas County Jail Population Bookins 3-year statistical summary

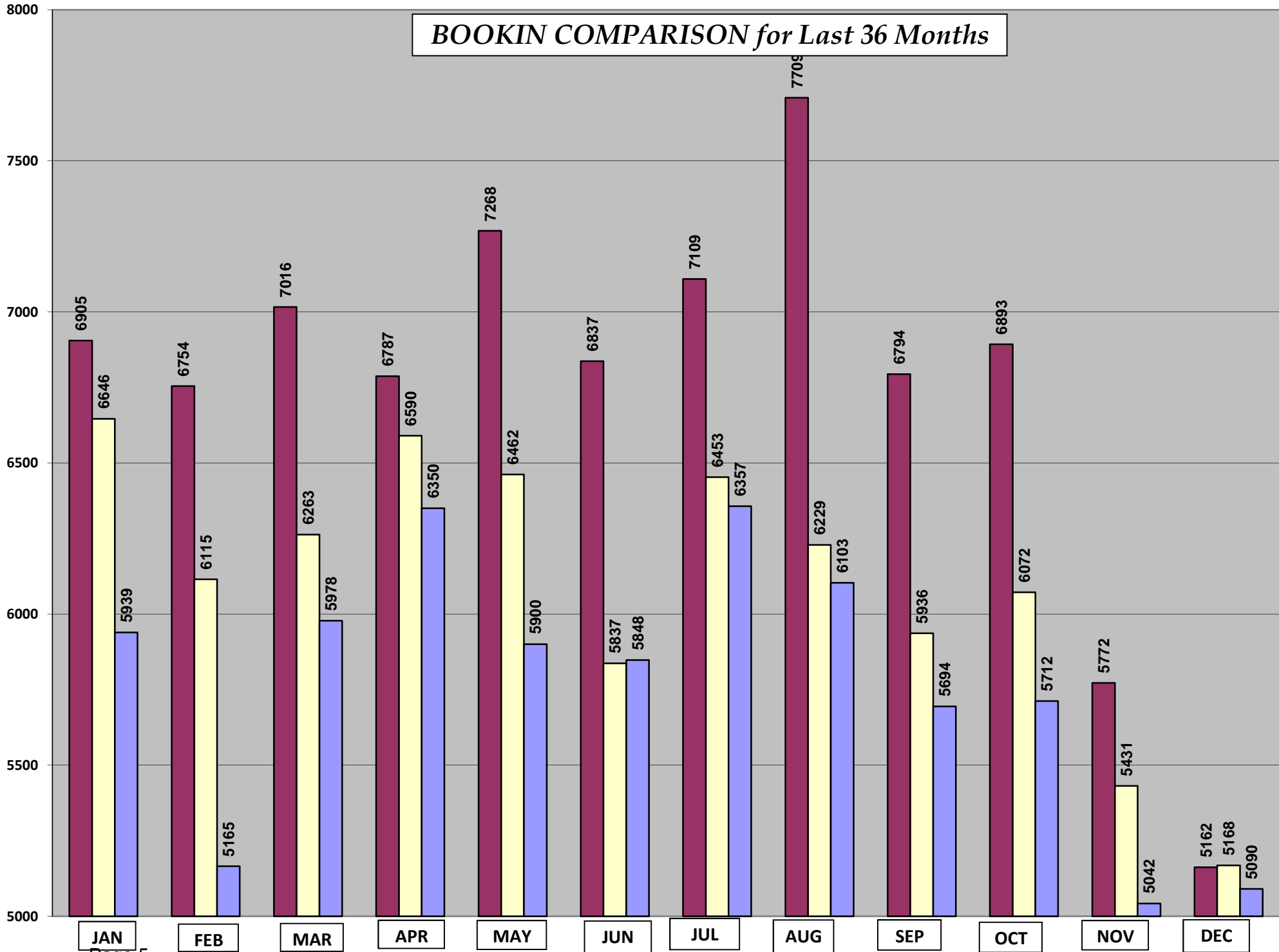
JAIL POPULATION monthly averages					
2013	Jail Pop AVG	2014	Jail Pop AVG	2015	Jail Pop AVG
Jan-13	6128	Jan-14	6247	Jan-15	6036
Feb-13	6163	Feb-14	6250	Feb-15	5956
Mar-13	5962	Mar-14	6041	Mar-15	5824
Apr-13	5876	Apr-14	6214	Apr-15	5868
May-13	6016	May-14	6287	May-15	5768
Jun-13	6068	Jun-14	6232	Jun-15	5618
Jul-13	6246	Jul-14	6336	Jul-15	5772
Aug-13	6345	Aug-14	6168	Aug-15	5727
Sep-13	6485	Sep-14	6150	Sep-15	5590
Oct-13	6418	Oct-14	5959	Oct-15	5509
Nov-13	6054	Nov-14	5963	Nov-15	5342
Dec-13	6015	Dec-14	5885	Dec-15	5210
	6148		6144		5685

BOOKINS monthly totals					
2013	Total bookins	2014	Total bookins	2015	Total bookins
Jan-13	6905	Jan-14	6646	Jan-15	5939
Feb-13	6754	Feb-14	6115	Feb-15	5165
Mar-13	7016	Mar-14	6263	Mar-15	5978
Apr-13	6787	Apr-14	6590	Apr-15	6350
May-13	7268	May-14	6462	May-15	5900
Jun-13	6837	Jun-14	5837	Jun-15	5848
Jul-13	7109	Jul-14	6453	Jul-15	6357
Aug-13	7709	Aug-14	6229	Aug-15	6103
Sep-13	6794	Sep-14	5936	Sep-15	5694
Oct-13	6893	Oct-14	6072	Oct-15	5712
Nov-13	5772	Nov-14	5431	Nov-15	5042
Dec-13	5162	Dec-14	5168	Dec-15	5090
	6751		6100		5765
	81,006		73,202		69,178

JAIL POPULATION for Last 36 Months



BOOKIN COMPARISON for Last 36 Months



DEWR BUCKET COMPARISON

BUCKET NAMES	DEC 2014 vs 2015	DEC 14	DEC 15	OCT 15	NOV 15	DEC 15	NOV vs DEC
Variance							
SPECIAL FOCUS							
Felony pend Grand Jury	9	542	551	595	579	551	-28
Fel.pend excl.SJF	-384	2384	2000	2079	2024	2000	-24
State Jail Felony	-139	496	357	396	375	357	-18
Special Programs	-20	122	102	115	119	102	-17
Parole Violator only	11	170	181	199	186	181	-5
PV-Felony	-72	302	230	249	234	230	-4
Class C Misd. only	1	22	23	25	25	23	-2
TRENDING UP							
Felony Not Filed	-6	340	334	306	301	334	33
Sentenced to SJF	38	98	136	88	115	136	21
Incompetent	30	48	78	65	71	78	7
US Marshal	-4	13	9	3	4	9	5
TRENDING DOWN							
SAFPP	15	116	131	143	153	116	-37
SJF-Serv Co.Jail (12.44a)	1	61	62	81	79	62	-17
Serv as Cond of Prob.	-14	69	55	64	64	55	-9
TDC<10yr/appeal	-22	45	23	36	29	23	-6
Contempt in Jail	-27	38	11	20	15	11	-4
Bench Warrants	-7	50	43	44	45	43	-2
Immigration	-4	6	2	3	3	2	-1
STABLE							
Misdemeanors pending	-51	207	156	158	152	156	4
Out of Co/State	9	53	62	57	60	62	2
Serving County Time	2	45	47	49	54	47	-7
TYC	0	0	0	0	0	0	0
Jail Population Avg.	-675	5885	5210	5509	5342	5210	-132

DEWR BUCKET MONTHLY AVERAGES

	Dec 13	Jan 14	Feb 14	Mar 14	Apr 14	May 14	Jun 14	Jul 14	Aug 14	Sep 14	Oct 14	Nov 14	Dec 14	Jan 15	Feb 15	Mar 15	Apr 15	May 15	Jun 15	Jul 15	Aug 15	Sep 15	Oct 15	Nov 15	Dec 15	Avg
Felony not filed	230	265	237	227	265	273	259	244	245	245	303	330	340	321	270	270	302	281	284	333	348	329	306	301	334	268
Felony pend GJ	655	700	789	710	729	690	734	873	696	611	669	628	542	716	579	555	601	576	603	622	575	556	595	579	551	710
Fel.pend excl.SJF	2203	2225	2218	2255	2236	2294	2278	2257	2379	2428	2355	2355	2384	2355	2388	2368	2263	2233	2146	2092	2146	2151	2079	2024	2000	2,172
State Jail Fel only	450	509	462	481	459	508	483	463	507	508	451	471	496	481	497	453	436	470	427	425	430	407	396	375	357	462
PV-Felony	329	364	377	366	355	363	358	359	311	357	324	330	302	277	282	311	302	299	268	274	280	276	249	234	230	350
TDC over 10yrs	538	549	511	484	475	435	441	462	426	414	410	439	472	482	483	515	527	475	469	483	474	468	507	446	397	436
Bench Warrants	48	43	55	58	58	61	59	58	48	43	46	45	50	52	43	41	51	49	46	57	47	43	44	45	43	48
TDC <10y/appeal	51	41	43	44	48	41	38	41	43	41	45	46	45	44	46	42	40	40	41	39	40	39	36	29	23	48
Sentenced SJF	134	116	113	71	123	128	136	123	123	158	115	106	98	107	129	97	92	94	106	118	104	86	88	115	136	107
Sentd SJF/appeal	4	4	4	5	5	3	2	2	2	2	4	6	4	3	3	3	3	3	2	1	2	2	1	0	0	5
SJF-Serv Co Jail	45	51	50	52	68	67	51	40	53	63	67	69	61	56	73	66	84	77	71	87	84	71	81	79	62	59
Misdmnr not filed	149	159	145	139	159	154	146	168	157	162	145	144	141	168	180	172	199	182	186	205	185	187	180	168	183	168
Misdmnr filed-pend	212	263	265	235	229	247	213	237	246	250	206	208	207	202	192	194	194	206	201	191	186	169	158	152	156	234
PV-Misdmnr	0	0	0	0	0	0	0	0	0	0	0	0	0	0	0	0	0	0	0	0	0	0	0	0	0	0
Serv as Con of Prob.	62	65	64	62	70	70	64	67	70	61	68	75	69	61	73	68	73	72	77	73	74	72	64	64	55	71
Serv Co time/ fines	64	81	104	87	91	83	84	82	89	73	65	55	45	43	63	47	49	47	47	52	52	49	49	54	47	82
Serv fines/ fees only	0	0	0	0	0	0	0	0	0	0	0	0	0	0	0	0	0	0	0	0	1	0	0	0	0	0
Out of Co/State	64	58	62	63	73	65	72	77	65	57	54	55	53	51	60	57	64	65	66	63	59	63	57	60	62	64
Parole Vio.	313	315	285	265	299	301	292	284	257	245	216	185	170	176	183	184	183	178	181	236	234	216	199	186	181	262
SAFPF	151	140	145	129	126	123	145	138	116	113	107	120	116	135	123	94	105	118	111	131	116	143	143	153	131	132
Sp.Prgms	159	137	134	125	128	131	122	120	121	145	141	125	122	125	108	101	96	106	98	109	101	111	115	119	102	164
Incompetent	35	28	35	36	34	39	50	45	43	36	40	43	48	49	56	76	86	85	78	63	56	59	65	71	78	46
US Marshal	27	30	37	39	70	80	78	76	59	33	17	15	13	12	6	2	1	2	2	2	2	2	3	4	9	15
Cntmpt-in Jail	40	44	49	49	54	63	56	42	38	40	42	44	38	42	39	29	26	25	25	24	22	18	20	14	11	42
Furlough	355	354	359	353	351	350	350	349	350	349	348	348	348	348	347	329	307	306	306	305	304	304	303	302	302	397
PEACE Bond	0	0	0	0	0	0	0	0	0	0	0	0	0	0	0	0	0	0	0	0	0	0	0	0	0	0
TYC hold	0	0	0	0	0	0	0	0	0	0	0	0	0	0	0	0	0	0	0	1	0	0	0	0	0	0
Immigration hold	10	10	9	10	11	10	9	8	8	11	11	8	6	5	6	7	7	9	8	8	3	3	3	3	2	9
Class C only	16	19	21	16	18	22	22	24	23	24	25	22	22	25	25	24	34	33	32	34	32	24	25	25	23	28
Contract	0	0	0	0	0	0	0	0	0	0	0	0	0	0	0	0	0	0	0	0	0	0	0	0	0	0
US Military	0	0	0	0	0	0	0	0	0	0	0	0	0	0	0	0	0	0	0	0	0	0	0	0	0	0
Default	28	31	36	33	31	35	40	46	42	33	32	40	40	48	48	48	50	41	43	49	46	46	45	40	38	41
Furlough added	6370	6601	6609	6394	6565	6637	6582	6685	6518	6499	6308	6310	6233	6384	6303	6153	6175	6074	5924	6078	6002	5893	5811	5644	5511	6,428
Jail Population Actual	6015	6247	6250	6041	6214	6287	6232	6336	6168	6150	5959	5963	5885	6036	5956	5824	5868	5768	5618	5772	5727	5590	5509	5342	5210	6,030
INTAKES	167	214	218	202	220	208	195	208	201	198	196	196	167	192	184	193	212	153	195	205	197	190	184	168	168	194
RELEASES	171	204	227	198	217	210	192	210	202	205	198	198	173	184	194	192	212	97	194	207	196	193	190	173	173	193
VARIANCE	-4	10	-9	4	3	-2	3	2	-1	-8	2	2	6	-8	-16	1	0	56	1	-2	1	3	6	5	5	3

Monthly Release Totals by Category

Category	Dec 2014	Jan 2015	Feb 2015	Mar 2015	Apr 2015	May 2015	Jun 2015	Jul 2015	Aug 2015	Sep 2015	Oct 2015	Nov 2015	Dec 2015	Net Nov 2015 vs Dec 2015
Deceased	0	0	0	1	0	1	0	0	0	0	1	0	1	1
Escaped	0	0	0	0	0	0	0	0	0	0	1	0	0	0
Failed to Report	0	3	1	3	0	0	2	3	1	0	2	0	0	0
Failed to Return	0	0	0	0	0	2	0	0	0	0	0	0	0	0
Per finding of fact/dry writ	42	42	29	32	28	37	26	27	46	44	33	33	30	-3
JTC/Wilmer	81	46	50	73	53	55	78	54	69	75	62	65	65	0
No Billed	6	6	16	8	7	12	10	12	11	10	8	14	12	-2
Other	130	118	92	112	123	148	107	173	137	131	124	105	89	-16
PAID FINE only	1	2	0	0	1	0	2	2	0	2	0	0	0	0
Parole InAbsentia	3	2	0	2	5	4	1	1	1	3	1	1	1	0
Parole Warrant W/dr w	96	83	65	72	61	49	51	61	64	65	69	46	57	11
Ptd Cash Bnd	218	235	231	292	255	225	243	244	263	187	232	201	216	15
Ptd PR Bnd	150	138	123	116	128	120	129	121	116	144	108	103	105	2
Ptd Pretrial Bnd	129	147	102	124	121	106	115	116	94	103	96	78	69	-9
Ptd Surety	956	1044	1022	1107	1054	974	952	1114	1066	1075	1060	933	987	54
Ptd Writ Bnd	0	0	1	1	1	1	0	1	2	3	0	0	2	2
Per Court Order	98	112	107	128	102	92	104	103	91	101	119	83	95	12
Probation	183	159	144	202	206	170	205	171	191	153	177	174	170	-4
Agency's pick-up expired	135	186	160	170	181	174	137	163	180	160	137	173	140	-33
Article 14.06	14	14	14	9	15	37	20	25	9	15	10	14	14	0
Class C only	817	952	790	930	1160	1093	984	1146	1079	897	888	802	816	14
per Investigating Agency	42	41	27	35	40	34	49	41	39	48	37	21	23	2
per Teletype	268	264	324	312	362	312	298	343	352	289	292	248	271	23
to Dallas Co. Agency	233	262	264	259	308	287	291	317	286	219	260	198	168	-30
INS	108	92	90	109	115	127	105	135	107	89	104	96	99	3
to Investigating Agency	14	12	20	10	15	12	6	3	5	16	17	8	7	-1
Mental Hospital	29	39	19	35	31	36	39	47	28	37	26	23	22	-1
Military	1	0	0	1	0	0	0	1	1	1	0	0	1	1
Out of County	342	307	318	340	344	357	390	437	354	347	387	321	341	20
Out of State	28	28	39	40	40	39	39	38	40	54	28	31	29	-2
Rem.Frm.Furlough Count	0	0	1	7	0	0	0	0	0	0	1	0	0	0
Special Programs	126	126	122	134	123	169	153	131	121	134	147	137	141	4
TDC	464	624	618	625	614	723	594	750	562	652	753	641	627	-14
US Marshall	16	25	22	17	14	13	22	16	28	16	43	31	33	2
Served Time	627	603	614	647	723	588	658	649	706	712	645	593	567	-26
Served Time/Pd Fine	1	4	5	11	12	6	6	12	8	3	8	9	1	-8
TOTALS	5358	5716	5430	5964	6364	6082	5813	6427	6076	5785	5876	5182	5199	17
avg per day	173	184	193	192	212	196	194	207	196	187	189	172	168	

AVERAGE LENGTH OF STAY IN JAIL BASED ON RELEASE REASON

RELEASE CATEGORY	2013 avg	Feb 2014	Mar 2014	Apr 2014	May 2014	Jun 2014	Jul 2014	Aug 2014	Sep 2014	Oct 2014	Nov 2014	Dec 2014	2014 avg	Jan 2015	Feb 2015	Mar 2015	Apr 2015	May 2015	Jun 2015	Jul 2015	Aug 2015	Sep 2015	Oct 2015	Nov 2015	Dec 2015	2015 avg
State Hosp	118	76	111	102	95	78	113	97	111	101	98	113	100	116	118	124	145	159	131	150	124	131	119	137	131	132
Paroled in Absentia	75	347	12	0	0	0	754	12	0	41	0	77	110	45	0	355	212	40	55	2	300	205	140	18	910	190
TDCJ	120	126	117	135	115	112	128	127	112	103	137	135	123	135	102	141	125	145	145	133	123	130	121	135	141	131
JTC/Wilmer	97	103	76	82	72	75	76	70	82	73	83	80	83	71	78	72	84	67	57	49	52	65	46	56	66	64
Special Programs	71	74	75	74	50	59	68	50	60	70	71	83	66	79	80	80	73	76	69	70	60	70	66	61	74	72
US Marshall	46	51	27	42	65	84	97	104	165	135	80	129	87	20	21	119	205	290	103	102	124	69	69	120	64	109
Other	24	13	13	12	14	72	22	13	17	7	8	8	18	10	20	15	22	5	8	32	47	53	51	54	81	33
Parole Wrnt wdrwn	46	41	41	38	50	42	52	49	57	53	40	40	47	39	38	38	31	60	55	44	33	44	35	39	47	42
on Probation	44	42	42	46	42	38	40	51	51	42	45	52	45	44	61	63	51	60	63	51	45	45	45	49	44	52
No Bill	31	34	32	30	29	25	28	27	25	30	27	32	29	36	35	38	31	29	31	41	27	33	30	23	28	32
Out of State	24	17	23	17	69	31	24	25	19	33	19	33	28	29	27	26	25	28	31	25	27	17	39	31	26	28
to INS	47	33	35	47	24	48	51	50	39	46	51	50	42	55	49	60	65	71	71	58	74	56	60	63	77	63
Posted PR Bond	28	29	27	29	40	33	27	26	30	21	31	29	30	19	21	30	18	24	20	30	17	23	20	20	22	22
Order of Court	30	17	17	27	18	26	28	38	24	18	20	20	23	22	45	22	27	23	21	51	21	24	24	14	26	27
Served Time	21	20	22	21	21	25	22	23	24	26	23	5	21	28	25	26	24	26	22	22	23	21	24	23	26	24
Out of Co	21	18	21	18	23	20	17	21	19	20	21	23	20	21	26	22	23	21	17	21	23	22	21	22	20	22
Failed to Report	17	14	17	18	0	0	18	0	6	10	7	0	9	6	19	8	0	17	10	11	12	411	19	0	0	43
Agcy pick-up expired	13	14	10	17	18	12	18	17	11	12	16	19	15	17	18	13	11	13	12	18	13	14	18	17	12	15
Per Teletype	9	7	7	8	9	15	7	8	8	6	4	11	8	8	7	9	8	8	8	11	9	10	10	8	12	9
To Dallas Co Agny	12	8	8	13	15	15	11	12	14	10	7	10	11	13	16	16	12	13	14	11	12	11	11	11	11	13
to Invgtng Agcy	4	5	3	20	2	2	19	0	2	2	2	4	6	2	2	4	17	2	3	2	1	2	2	3	28	6
Per Invgtng Agcy	5	5	5	11	5	5	6	7	6	8	7	8	7	7	8	7	17	7	2	6	16	6	7	5	6	8
Finding of fact/Dry Writ	7	6	7	7	7	7	7	6	6	7	7	9	7	9	9	10	8	10	11	8	8	8	10	8	9	9
Class C only	8	8	6	10	9	9	8	8	9	7	7	11	8	9	11	11	9	11	10	10	11	12	12	9	11	11
Ptd Surety	6	6	4	6	9	5	7	7	5	7	6	7	6	5	8	4	6	7	6	5	5	5	4	5	5	5
to US Military	3	5	2	0	0	5	0	0	4	5	0	5	2	0	0	18	0	0	0	5	0	3	0	0	0	2
Ptd Writ Bd	7	6	0	2	2	0	0	2	3	3	0	0	2	0	7	6	0	3	0	2	1	4	0	3	1	2
Ptd Pretrial Bd	3	3	3	3	3	3	3	3	3	3	4	4	3	3	3	3	1	3	2	2	2	2	2	1	3	2
Ptd Cash Bd	2	2	2	2	2	3	2	2	2	2	2	2	2	2	2	2	1	2	1	1	1	1	1	0	1	1
Serv Time/Pd Fine	7	3	2	3	1	3	1	2	2	2	1	1	2	1	9	2	0	1	0	2	0	0	0	0	0	1
Article 14.06	3	1	0	3	2	4	14	13	13	2	16	16	7	10	25	8	36	19	13	28	15	12	15	76	45	25
Deceased	39	3	6	4	0	0	0	0	0	0	33	0	4	0	0	340	0	0	0	0	0	0	3	0	36	32
Failed to Return	0	68	0	9	0	0	0	0	0	0	0	0	6	0	0	0	0	0	0	0	0	0	0	0	0	0
Escaped	0	0	0	0	0	0	0	0	0	0	0	0	0	0	0	0	0	0	0	0	0	0	6	0	0	1
Removed from furlough	16	0	31	0	0	6	0	0	0	0	0	0	3	0	0	0	0	0	0	0	0	0	102	0	0	9
Avg length stay in-jail/ those released/ in the month	29	29	27	32	29	31	30	30	30	28	29	30	30	30	29	31	30	31	31	30	28	31	32	33	35	31
Total Releases for month	6750	6347	6139	6505	6510	5762	6501	6260	6164	6129	5347	5358	6113	5716	5430	5964	6364	6082	5813	6427	6076	5785	5876	5182	5199	5826

STATE JAIL INITIATIVE STATISTICS

Month For the Month Ending	PLEAS			REVOCATIONS			TRIALS			DISMISSALS	WAIVERS	DISPOSITIONS
	By Court	By Mag	Total	By Court	By Mag	Total	By Court	By Jury	Total			
42 January 2015	490	228	718	161	0	161	0	0	0	9	53	888
43 February 2015	459	215	674	134	0	134	0	0	0	14	35	822
44 March 2015	449	219	668	161	0	161	0	0	0	29	37	858
45 April 2015	612	292	904	188	0	188	0	0	0	21	10	1,113
46 May 2015	488	201	689	166	0	166	0	0	0	42	0	897
47 June 2015	611	173	784	159	0	159	0	2	2	20	4	965
48 July 2015	669	264	933	217	0	217	0	5	5	32	3	1,187
49 August 2015	547	252	799	168	0	168	0	2	2	24	0	993
50 September 2015	457	211	668	188	0	188	0	4	4	50	0	910
51 October 2015	544	292	836	177	0	177	0	0	0	46	3	1,059
52 November 2015	388	199	587	129	0	129	0	0	0	31	2	747
53 December 2015	305	219	524	100	0	100	0	0	0	15	0	639
Average	520	214	734	159	11	170	1	1	2	18	69	924

DALLAS COUNTY SHERIFF'S DEPARTMENT
 FUGITIVE SECTION FISCAL YEAR 2016
 TDCJ MONTHLY ACTIVITY SHEET
 MONTH: December 2015

BEGINNING TOTAL OF INMATES PAPER READY:

270 12

ID / SJ

DATE	ID JUDGMENTS RECEIVED	SJ JUDGMENTS RECEIVED	JUDGMENTS PROCESSED	JUDGMENTS RETURNED	#OF INMATES PR / ID	PAR VIOL READY	B/W RTR	# OF INMATES TO TDCJ	#OF INMATES WAITING / ID	#OF INMATES PR / SJ	# OF INMATES TO SJ	#OF INMATES WAITING / SJ	# OF INMATES TO ISF	# OF INMATES TO SAPPF
1	32	13	12	0	23	0	0	36	257	0	0	12	4	0
2	43	16	38	0	2	0	0	1	258	4	16	0	0	7
3	47	28	44	0	24	2	6	5	277	8	8	0	2	1
4	43	11	99	3	34	0	0	2	309	12	0	12	0	11
5	0	0	0	0	0	0	0	1	308	0	0	12	0	0
6	0	0	0	0	0	0	0	0	308	0	0	12	0	0
7	20	12	24	3	2	0	0	1	309	0	0	12	2	1
8	18	13	37	3	17	5	4	34	292	15	11	16	0	3
9	28	12	34	1	5	2	0	0	297	16	21	11	0	14
10	24	18	81	1	24	3	0	58	263	12	0	23	4	1
11	23	17	8	0	1	0	0	1	263	0	0	23	13	0
12	0	0	0	0	0	0	0	0	263	0	0	23	0	0
13	0	0	0	0	0	0	0	0	263	0	0	23	0	0
14	13	8	29	0	0	0	0	45	218	0	0	23	2	2
15	21	14	38	3	16	0	0	33	201	16	6	33	0	4
16	37	5	23	6	6	0	0	1	206	0	21	12	0	10
17	34	12	117	2	49	0	0	6	249	14	0	26	0	18
18	26	5	67	0	27	0	1	0	276	0	0	26	8	0
19	0	0	0	0	0	0	0	0	276	0	0	26	0	0
20	0	0	0	0	0	0	0	2	274	0	0	26	0	0
21	37	23	7	0	1	0	0	19	256	4	0	30	6	4
22	22	13	41	26	3	0	8	48	211	17	0	47	0	0
23	0	0	0	0	0	0	0	0	211	0	0	47	0	0
24	0	0	0	0	0	0	0	0	211	0	0	47	0	0
25	0	0	0	0	0	0	0	0	211	0	0	47	0	0
26	0	0	0	0	0	0	0	0	211	0	0	47	0	0
27	0	0	0	0	0	0	0	0	211	0	0	47	0	0
28	41	37	29	2	0	0	0	0	211	0	0	47	2	1
29	11	10	58	1	24	0	0	0	235	0	6	41	0	0
30	4	5	96	12	33	0	0	81	187	22	59	4	7	0
31	25	10	1	1	2	0	0	1	188	0	0	4	0	0
TOTAL	549	282	883	64	293	12	19	375	188	140	148	4	50	77

PRE-INDICTMENT WAIVERS BY COURT BY MONTH

2013 Year Totals	151	97	90	111	96	66	72	75	121	149	58	95	93	131	86	83	96	1670
Year Avg	13	8	7	9	8	5	6	6	10	12	5	8	8	11	7	7	8	139
Year Avg	16	7	5	5	5	5	7	6	7	11	4	4	5	4	4	5	5	104
DATE	CDC1	CDC2	CDC3	CDC4	CDC5	CDC6	CDC7	194th	195th	203rd	204th	265th	282nd	283rd	291st	292nd	363rd	Total
2014 Year Totals	195	82	63	64	60	58	86	67	85	129	51	50	59	46	45	55	58	1253
Year Avg	16	7	5	5	5	5	7	6	7	11	4	4	5	4	4	5	5	104
DATE	CDC1	CDC2	CDC3	CDC4	CDC5	CDC6	CDC7	194th	195th	203rd	204th	265th	282nd	283rd	291st	292nd	363rd	Total
Jan 15	17	2	2	10	2	7	5	3	9	20	15	4	5	1	4	7	3	116
Feb 15	16	5	2	8	5	6	7	9	1	4	5	7	3	4	1	6	4	93
Mar 15	7	10	5	9	1	3	10	6	8	3	7	5	2	5	0	4	0	85
Apr 15	19	12	7	4	7	3	10	6	14	7	3	5	4	6	4	3	6	120
May 15	21	4	0	9	2	5	6	4	1	6	15	3	3	1	4	9	1	94
Jun 15	13	2	3	2	3	2	1	8	3	13	12	2	2	1	4	10	16	97
Jul 15	21	5	3	3	2	7	2	5	7	6	4	4	4	5	12	11	3	104
Aug 15	9	6	4	5	6	9	4	4	9	2	2	6	2	5	10	3	3	89
Sep 15	15	3	3	2	3	6	3	14	13	2	1	0	7	9	5	2	7	95
Oct 15	9	4	5	20	4	3	7	6	4	7	7	8	3	6	8	4	2	107
Nov 15	14	2	5	6	6	2	7	5	2	3	16	1	1	4	2	8	2	86
Dec 15	19	0	5	6	10	5	1	4	3	4	7	6	3	2	2	6	2	85
2015 Year Totals	180	55	44	84	51	58	63	74	74	77	94	51	39	49	56	73	49	1171
Year Avg	15	5	4	7	4	5	5	6	6	6	8	4	3	4	5	6	4	98

DISPOSITION TOTALS BY FELONY COURT

2010	Jan	Feb	Mar	April	May	Jun	Jul	Aug	Sept	Oct	Nov	Dec	Average	
Avg	157	167	187	196	177	163	180	186	185	191	178	170	178	
TOTAL DISPOSTIONS	2667	2841	3172	3338	3010	2779	3066	3167	3148	3239	3018	2898	3040	36,343
2011	Jan	Feb	Mar	April	May	Jun	Jul	Aug	Sept	Oct	Nov	Dec	Average	
Avg	171	142	195	190	192	219	196	205	176	192	165	147	182	
TOTAL DISPOSTIONS	2900	2408	3321	3232	3258	3721	3334	3489	2997	3261	2803	2499	3184	37,223
2012	Jan	Feb	Mar	April	May	Jun	Jul	Aug	Sept	Oct	Nov	Dec	Average	
Avg	161	163	186	185	176	182	158	191	158	190	180	134	172	
TOTAL DISPOSTIONS	2744	2764	3154	3151	2984	3095	2691	3245	2679	3234	3062	2282	1924	35,085
2014	Jan	Feb	Mar	April	May	Jun	Jul	Aug	Sept	Oct	Nov	Dec	Average	
CDC1	194	199	194	179	217	145	175	249	202	172	183	144	188	2253
CDC2	179	189	196	200	183	208	139	199	179	173	146	132	177	2123
CDC3	182	162	162	164	184	134	132	183	148	200	124	135	159	1910
CDC4	180	147	147	178	159	188	158	148	191	153	119	92	155	1860
CDC5	229	168	182	157	167	138	185	186	167	222	137	132	173	2070
CDC6	170	163	163	156	143	165	166	160	115	157	123	126	151	1807
CDC7	197	192	196	139	131	196	134	180	156	182	155	127	165	1985
194TH	221	194	198	199	224	170	202	242	137	180	150	186	192	2303
195TH	182	182	172	191	156	159	152	218	187	171	117	120	167	2007
203RD	151	148	164	188	180	158	115	217	150	191	132	159	163	1953
204TH	238	199	195	165	195	149	157	159	190	169	123	142	173	2081
265TH	144	201	171	209	199	173	200	193	175	173	139	111	174	2088
282ND	198	148	145	189	159	159	158	170	184	174	115	154	163	1953
283RD	215	223	174	185	209	215	205	215	164	227	152	144	194	2328
291ST	254	216	197	212	230	151	142	230	165	218	136	174	194	2325
292ND	114	188	156	182	173	176	112	181	192	168	115	113	156	1870
363RD	172	184	174	208	175	148	196	240	138	167	127	115	170	2044
Avg	189	183	176	182	181	167	160	198	167	182	135	136	171	
TOTAL DISPOSTIONS	3220	3103	2986	3101	3084	2832	2728	3370	2840	3097	2293	2442	3085	35,096
2015	Jan	Feb	Mar	April	May	Jun	Jul	Aug	Sept	Oct	Nov	Dec	Average	
CDC1	177	170	180	189	210	209	193	208	200	195	178	165	190	2274
CDC2	187	140	179	197	220	160	168	203	143	233	183	158	181	2171
CDC3	238	147	191	170	148	175	166	169	203	214	135	166	177	2122
CDC4	144	200	155	146	173	173	188	166	145	221	156	149	168	2016
CDC5	147	159	163	192	152	168	199	162	176	182	183	180	172	2063
CDC6	146	110	133	141	176	130	172	197	151	168	143	181	154	1848
CDC7	186	166	212	231	219	177	178	190	179	161	190	169	188	2258
194TH	169	211	233	270	201	309	237	192	253	248	150	165	220	2638
195TH	157	128	164	199	143	244	146	172	202	201	180	157	174	2093
203RD	144	171	160	193	187	221	179	172	215	166	154	160	177	2122
204TH	198	162	228	214	227	212	167	206	275	185	238	158	206	2470
265TH	164	232	241	185	228	276	242	229	238	256	207	211	226	2709
282ND	178	138	201	202	189	165	210	156	210	195	153	138	178	2135
283RD	194	156	191	223	188	190	223	212	199	241	174	160	196	2351
291ST	183	154	204	171	254	210	189	206	216	221	189	177	198	2374
292ND	137	132	165	213	179	214	231	179	221	192	172	165	183	2200
363RD	175	110	116	136	154	201	175	163	126	151	180	162	154	1849
Avg	172	158	183	192	191	202	192	187	197	202	174	166	185	
TOTAL DISPOSTIONS	2924	2686	3116	3272	3248	3434	3263	3182	3352	3430	2965	2821	3326	37,693

Felony Courts Dispositions And Monthly Jail Chain Averages By Court

	Burns	Adams	Lewis	Collins	Thompson	Howard	Frizell	White	Tinsley	Hawthorne	Kemp	Bennett	Davis	Magnis	Mitchell	Birmingham	Holmes
01/15 AVG	169	191	190	197	234	240	233	276	210	217	240	268	208	270	225	264	208
ranking	1	3	2	4	11	T-12	10	17	7	8	T-12	15	T-5	16	9	14	T-5
	Burns	Adams	Lewis	Collins	Thompson	Howard	Frizell	White	Tinsley	Hawthorne	Kemp	Bennett	Davis	Magnis	Mitchell	Birmingham	Holmes
02/15 AVG	167	192	190	183	210	246	242	271	201	196	202	249	235	264	225	259	219
ranking	1	4	3	2	8	13	12	17	6	5	7	14	11	16	10	15	9
	Burns	Adams	Lewis	Collins	Thompson	Howard	Frizell	White	Tinsley	Hawthorne	Kemp	Bennett	Davis	Magnis	Mitchell	Birmingham	Holmes
03/15 AVG	164	176	187	179	204	248	245	387	197	199	190	244	242	261	233	247	219
ranking	1	2	4	3	8	15	13	17	6	7	5	12	11	16	10	14	9
	Burns	Adams	Lewis	Collins	Thompson	Howard	Frizell	White	Tinsley	Hawthorne	Kemp	Bennett	Davis	Magnis	Mitchell	Birmingham	Holmes
04/15 AVG	143	151	161	158	171	213	211	230	181	193	161	193	195	215	207	221	197
ranking	1	2	T-4	3	6	14	13	17	7	T-8	T-4	T-8	11	15	12	16	10
	Burns	Adams	Lewis	Collins	Thompson	Howard	Frizell	White	Tinsley	Hawthorne	Kemp	Bennett	Davis	Magnis	Mitchell	Birmingham	Holmes
05/15 AVG	171	168	187	190	207	240	217	263	207	204	165	239	223	226	210	236	235
ranking	3	2	4	5	T-7	16	10	17	T-7	6	1	15	11	12	9	14	13
	Burns	Adams	Lewis	Collins	Thompson	Howard	Frizell	White	Tinsley	Hawthorne	Kemp	Bennett	Davis	Magnis	Mitchell	Birmingham	Holmes
06/15 AVG	171	168	187	190	207	240	217	263	207	204	165	239	223	226	210	236	235
ranking	2	T-3	5	T-3	T-8	16	7	17	T-8	6	1	T-12	15	11	10	14	T-12
	Burns	Adams	Lewis	Collins	Thompson	Howard	Frizell	White	Tinsley	Hawthorne	Kemp	Bennett	Davis	Magnis	Mitchell	Birmingham	Holmes
07/15 AVG	160	184	177	170	199	238	204	238	201	197	150	218	218	237	216	221	196
ranking	2	5	4	3	8	T-16	10	T-16	9	7	1	T-12	T-12	15	11	14	6
	Burns	Adams	Lewis	Collins	Thompson	Howard	Frizell	White	Tinsley	Hawthorne	Kemp	Bennett	Davis	Magnis	Mitchell	Birmingham	Holmes
08/15 AVG	162	191	189	173	204	222	205	247	196	201	154	208	213	227	214	196	210
ranking	2	5	4	3	9	15	10	17	T-6	8	1	11	13	16	14	T-6	12
	Burns	Adams	Lewis	Collins	Thompson	Howard	Frizell	White	Tinsley	Hawthorne	Kemp	Bennett	Davis	Magnis	Mitchell	Birmingham	Holmes
09/15 AVG	162	183	187	173	214	221	202	247	196	199	161	193	208	238	217	195	201
ranking	2	4	5	3	13	15	10	17	8	9	1	11	12	16	14	7	12
	Burns	Adams	Lewis	Collins	Thompson	Howard	Frizell	White	Tinsley	Hawthorne	Kemp	Bennett	Davis	Magnis	Mitchell	Birmingham	Holmes
10/15 AVG	162	183	187	173	214	221	202	247	196	199	161	193	208	238	217	195	201
ranking	2	5	4	3	15	14	13	16	T-9	6	1	T-9	T-9	16	14	7	12
	Burns	Adams	Lewis	Collins	Thompson	Howard	Frizell	White	Tinsley	Hawthorne	Kemp	Bennett	Davis	Magnis	Mitchell	Birmingham	Holmes
11/15 AVG	162	177	178	161	206	208	212	225	184	183	152	183	189	218	198	181	209
ranking	2	5	4	3	15	14	13	16	T-9	6	1	T-9	T-9	16	14	7	12
	Burns	Adams	Lewis	Collins	Thompson	Howard	Frizell	White	Tinsley	Hawthorne	Kemp	Bennett	Davis	Magnis	Mitchell	Birmingham	Holmes
12/15 AVG	163	166	178	165	201	218	204	233	185	193	137	174	186	205	198	171	179
ranking	2	4	7	3	14	16	15	17	10	12	1	6	11	16	13	5	9

Average Jail Pop Totals for Dispos by Court

12/01/15-12/31/15

DATE	CDC 1	CDC 2	CDC 3	CDC 4	CDC 5	CDC 6	CDC 7	194	195	203	204	265	282	283	291	292	363	Total
JUDGE	BURNS	ADAMS	LEWIS	COLLINS	THOMPSON	HOWARD	FRIZELL	WHITE	TINSLEY	HAWTHORNE	KEMP	BENNETT	DAVIS	MAGNIS	MITCHELL	BIRMINGHAM	HOLMES	
12/01/15	164	170	174	165	197	222	203	229	182	193	143	177	185	210	198	179	194	3185
12/02/15	166	174	173	164	201	223	205	229	186	190	136	175	189	210	193	180	187	3181
12/03/15	172	172	174	165	200	216	202	230	180	190	136	179	185	204	196	178	179	3158
12/04/15	169	172	177	163	198	217	201	228	180	190	138	183	182	204	198	172	180	3152
12/07/15	169	166	174	168	201	218	203	229	180	192	133	179	183	201	202	178	173	3149
12/08/15	167	162	178	169	203	219	199	225	186	189	133	179	186	204	209	176	171	3155
12/09/15	163	159	182	169	205	225	201	228	186	193	132	174	184	213	206	174	169	3163
12/10/15	163	161	184	172	203	226	202	226	190	194	130	174	188	211	206	175	165	3170
12/11/15	164	163	179	167	208	223	206	229	188	192	129	170	185	215	206	173	164	3161
12/14/15	160	159	176	170	209	219	203	232	190	193	134	171	184	206	200	178	169	3153
12/15/15	164	161	176	165	207	220	205	234	186	196	138	164	188	205	200	173	171	3153
12/16/15	165	169	173	158	201	220	207	238	180	194	137	172	189	200	202	176	171	3152
12/17/15	164	163	175	159	200	218	205	234	180	190	139	175	186	201	201	172	173	3135
12/18/15	165	163	172	161	196	214	199	233	179	192	140	175	186	204	195	159	170	3103
12/21/15	161	164	175	159	194	208	202	237	179	188	139	172	185	194	186	157	167	3067
12/22/15	160	170	177	162	196	211	209	242	187	191	140	173	192	198	184	161	169	3122
12/28/15	151	165	181	168	197	215	206	241	191	202	141	168	191	200	189	157	171	3134
12/29/15	149	167	185	169	196	214	209	243	192	206	141	170	187	201	189	156	171	3145
12/30/15	147	171	190	171	195	217	206	243	190	211	140	168	190	205	196	159	172	3171
12/31/15	148	171	190	176	200	221	207	240	193	215	139	172	189	205	192	157	174	3189
DEC.AVG	163	166	178	165	201	218	204	233	185	193	137	174	186	205	198	171	179	2981
	★	↓	↓	★	↓	↓	↓	↓	↓	↓	🏆	↓	↓	↓	↓	↓	↑	
ranking	3	4	5	2	11	12	14	16	9	T-7	1	T-7	10	15	10	6	13	

Defendants in jail pending lab analysis						
Date	DEA	DPS	Tarrant	SWIFS	Total	Total over 30 days
10/01/13	0	21	3	78	102	15
11/11/13	0	17	3	96	114	10
12/10/13	0	17	0	89	106	15
01/06/14	0	18	0	43	61	3
02/11/14	1	37	0	80	118	16
03/07/14	3	55	4	92	154	25
04/08/14	3	82	0	97	182	35
05/12/14	1	35	5	61	102	18
06/09/14	0	51	6	78	135	32
07/03/14	2	26	8	43	79	14
08/11/14	5	54	1	59	119	23
09/10/14	5	46	0	39	93	1
10/10/14	3	56	1	62	122	0
11/11/14	6	56	6	65	133	0
12/09/14	6	60	0	36	102	0
01/09/15	4	67	3	23	97	0
02/06/15	3	52	15	28	98	0
03/06/15	4	90	20	21	135	0
04/06/15	0	52	20	41	113	0
05/06/15	2	65	15	41	123	0
06/05/15	4	51	16	18	89	0
07/06/15	3	78	8	28	117	0
08/10/15	1	65	17	27	110	0
09/04/15	2	53	40	50	110	0
10/10/15	2	51	36	45	134	0
11/06/15	0	61	21	41	123	1
12/06/15	0	71	31	44	135	0
01/11/16	1	70	32	40	143	0

Misdemeanor Court's JAIL POPULATION INITIATIVE PROGRAM

BEGAN 6/9/08

	1	2	3	4	5	6	7	8	9	10	11	12	13	14	15	16	17	18	19	20	21	22	23	24	25	26	27	28	29	30	31	Total for the	began 6/9/08
FY 07/08																																	\$ 49,654.75
FY 08/09																																	\$ 201,105.20
FY 09/10																																	\$ 188,556.90
FY 11/12																																	\$ 126,874.44
Jan 13	23	21	9	19			17	10	14	11	23			15	19	11	18	12			H	25	14	19	17			19	10	13	14	353	\$ 9,935.19
Feb 13	14			19	12	13	24	10			16	19	20	12	11			17	11	23	27	13			22	17	9	9				318	\$ 8,950.11
Mar 13	8			8	12	5	25	10			7	10	11	27	9			10	13	7	18	14			17	9	6	20	9			255	\$ 7,176.98
April 13	10	13	9	18	14			14	11	9	15	8			15	17	13	19	12			16	9	13	11	10			15	11	10	292	\$ 8,218.34
May 13	14	17	11			10	11	14	18	7			9	13	15	17	14			12	8	11	16	10			11	14	8	10	12	282	\$ 7,936.89
June 13			12	13	15	5	7				16	13	10	9	14			11	13	8	10	7			19	13	6	9	12			222	\$ 6,248.19
JULY 13	13	10	H	14	7			15	11	9	19	8			10	9	12	14	11			11	13	7	15	6			16	13	10	253	\$ 7,120.69
AUG 13	15	12			10	11	13	15	9			14	12	9	11	8			17	10	14	22	6			16	11	9	14	13	11	282	\$ 7,936.89
SEPT 13	H	16	10	11	13			11	13	10	9	7			14	11	13	10	8			11	15	9	13	7			10	14		235	\$ 6,614.08
Oct 13	12	11	17	6			13	11	7	19	10			11	15	10	16	8			17	13	15	19	12			12	14	8	10	286	\$ 8,049.47
Nov 13	7			7	10	11	13	8			11	8	14	10	6			15	11	13	10	H			16	12	9	H	H			191	\$ 5,375.70
Dec 13	13	10	9	7			15	11	10	17	8			15	10	11	19	7			11	15	13	H	H			16	13	8	9	247	\$ 6,951.82
FY12/13																																	\$ 120,601.33
JAN 14	10	8	14			7	16	10	15	6			11	9	16	13	7			H	12	8	9	6	4			9	7	10	15	222	\$ 6,933.06
FEB 14			8	10	9	13	6			11	15	7	9	5			13	10	15	6	8			7	9	5	12					178	\$ 5,558.94
MAR 14			6	9	5	10	8			7	4	6	9	4			10	9	8	7	11			11	9	13	6	5			4	161	\$ 5,028.03
April 14	6	3	10	7			4	7	6	9	6			4	7	9	11	6			8	6	3	4	6			9	10	6		147	\$ 4,590.81
MAY 14	3	4			4	6	7	11	5			6	9	4	10	6			7	9	6	11	4			8	4	6	13	4		147	\$ 4,590.81
JUNE 14		6	4	7	11	4			7	5	10	7	4			11	8	4	9	3			8	11	5	9	4			7		144	\$ 4,497.12
JULY 14	7	11	18	H			4	5	10	15	7			8	7	13	19	7			6	5	9	18	8			7	11	16	10	221	\$ 6,901.83
AUG 14	5			5	10	7	25	12			5	10	11	19	7			12	9	13	22	10			13	8	10	15	7			235	\$ 7,339.05
SEPT 14	6	10	7	25	11			11	13	9	22	10			10	7	9	19	8			10	9	13	8	7			21	18	10	273	\$ 8,525.79
OCT 14	7	12	5			10	12	8	21	9			11	9	8	21	8			13	10	8	17	7			12	10	9	21	11	259	\$ 8,088.57
NOV 14			6	9	7	11	9			11	9	8	17	6			13	10	9	20	11			7	10	7	13	10			12	215	\$ 6,714.45
DEC 14	12	7	6	9	4			11	9	6	17	7			10	9	13	20	12			9	15	H	H	H			10	13	9	208	\$ 6,495.84
FY13/14																																	\$ 75,264.30
JAN 15	7	11			12	9	17	13	6			10	9	13	20	12			H	9	15	13	17			11	13	8	10	7		242	\$ 7,557.66
FEB 15		10	9	12	15	6			13	15	8	9	7			15	9	7	21	10			11	9	13	17	8					224	\$ 6,995.52
MAR 15		10	9	13	17	8			15	9	7	10			13	11	9	17	8			13	10	14	8	6			10	7		224	\$ 6,995.52
April 15	11	13	15			8	10	7	11	9			13	10	9	18	10			9	5	12	16	7			12	7	9	15		236	\$ 7,370.28
May 15	9			12	14	8	9	7			13	7	12	16	8			15	11	9	7	7			8	6	10	14	7			209	\$ 6,527.07
JUNE 15		13	10	12	9			10	7	12	15	7			15	9	7	11	15			8	10	13	17	9			14	11	8	242	\$ 7,557.66
JULY 15	14	10	12	H		15	9	12	15	7			8	11	9	14	6			12	9	10	18	7			15	9	13	10	7	252	\$ 7,869.96
AUG 15			12	10	15	9	9			11	12	10	15	8		6	12	9	14	7			13	10	11	15	8			9		225	\$ 7,026.75
SEPT 15	15	11	9	7		H	12	11	14	6			10	14	11	16	9			8	6	10	13	7			13	10	9	10		231	\$ 7,214.13
OCT 15	8	7			18	10	11	5	2			10	9	11	5	3				11	8	6	7	4			10	21	10	12	16	204	\$ 7,076.76
NOV 15		9	9	11	8	10			20	11	9	6	12			18	10	8	16	15			9	11	12	H	H			6	8	218	\$ 7,562.42
DEC 15	8	13	14	13			29	6	12	10	14			18	5	7	8	9			30	10	H	H	H			11	10	14	43	284	\$ 9,851.96
FY15/16																																	\$ 89,605.69
Page 18																																	
E=Election Coverage A=Manager's office absences																	H=Holiday					Total since beginning											

PRETRIAL RELEASE SERVICES MONTHLY REPORT

	JAN 15	FEB 15	MAR 15	APRIL 15	MAY 15	JUN 15	JUL 15	Aug 15	SEPT 15	OCT 15	NOV 15	DEC 15	12mo AVG
AVG BOOKINS per day	192	184	193	220	190	195	205	252	190	184	168	164	195
Interviews	309	264	365	319	263	290	287	283	276	237	217	212	277
Cr. History reviewed	485	452	507	469	419	412	483	517	599	450	370	512	473
Bonds written	221	182	216	209	171	188	216	161	160	158	139	122	179
AVG BONDS per day	11.1	10.2	9.8	9.5	8.7	8.8	9.8	7.8	8.1	7	7.4	7.3	8.79
Bonds (collected)	176	139	169	163	130	143	163	107	137	130	130	90	140
Bonds (waived)	45	43	47	36	41	45	53	30	33	42	37	26	40
Bonds TOTAL	221	182	216	209	171	188	216	137	170	172	167	116	180
FEES (collected)	\$5,930	\$4,595	\$5,515	\$5,470	\$4,070	\$5,090	\$5,450	\$4,125	\$4,455	\$4,180	\$3,315	\$2,900	\$4,591
FEES (waived)	\$1,735	\$1,530	\$1,535	\$1,370	\$1,650	\$1,565	\$2,415	\$1,190	\$1,205	\$1,260	\$1,585	\$945	\$1,499
FEES TOTAL	\$7,665	\$6,125	\$7,050	\$6,840	\$5,720	\$6,655	\$7,865	\$5,315	\$5,660	\$5,440	\$4,900	\$3,845	\$6,090

AVERAGES - LATEST HISTORICAL STATISTICAL DATA	
	BKIN AVG
2008 AVERAGE	271
2009 AVERAGE	264
2010 AVERAGE	257
2011 AVERAGE	238
2012 AVERAGE	231
2013 AVERAGE	222
2014 AVERAGE	204
Jan-15	192
Feb-15	184
Mar-15	193
Apr-15	220
May-15	190
Jun-15	195
Jul-15	205
Aug-15	252
Sep-15	190
Oct-15	184
Nov-15	168
Dec-15	164
2015 AVERAGE	195

PRETRIAL RELEASE SERVICES ~ YEARLY AVERAGES			
	PTR Bond	Jail Pop	Bkin Avg
2007	14	6288	249
2008	13	6125	271
2009	11	6165	264
2010	10	6818	257
2011	9	6430	238
2012	9	6310	231
2013	11	6015	222
2014	10	6144	204
2015	9	5685	195

**Dallas County Department of Criminal Justice
Bond Supervision Unit for Alcohol Monitoring
Statistical Summary Report**

Month/Year	Total Supervised Cases Start Of Month	Bond Orders In Process	New Bond Orders Received	Successful Completions	Unsuccessful Completions	Violations Submitted to Court	Orientations Completed	Verified Installations	Total Supervised Cases End of Month	Supervision Fees Collected
Sep. 12	892	174	105	74	0	89	115	70	913	\$ 7,257.75
Oct. 12	913	198	121	123	3	90	110	79	910	\$ 7,938.50
Nov. 12	910	153	82	55	0	59	74	35	864	\$ 7,051.00
Dec. 12	864	172	89	62	0	70	79	51	935	\$ 6,227.50
Jan. 13	935	189	112	157	5	108	116	64	913	\$ 8,872.75
Feb. 13	913	197	111	142	30	73	113	68	874	\$ 8,098.25
Mar. 13	874	208	120	67	18	77	116	79	892	\$ 8,257.00
Apr. 13	892	227	129	80	4	80	127	79	938	\$ 8,579.75
May 13	938	218	120	100	28	105	105	101	929	\$ 8,733.00
Jun. 13	929	235	132	77	14	88	120	77	963	\$ 9,153.25
Jul. 13	963	408	137	85	7	115	131	73	1004	\$ 9,441.75
Aug. 13	1004	376	162	104	24	170	147	99	1092	\$ 9,955.25
Sep. 13	1092	323	129	96	4	114	135	84	1123	\$ 10,206.75
Oct. 13	1123	390	189	142	7	135	174	94	1199	\$ 11,570.25
Nov. 13	1199	402	111	87	4	69	117	51	1201	\$ 10,984.75
Dec. 13	1201	385	103	67	10	119	98	58	1219	\$ 10,193.25
Jan. 14	1219	407	184	90	9	114	96	79	1290	\$ 11,598.80
Feb. 14	1290	379	105	128	27	120	94	94	1227	\$ 12,934.25
Mar. 14	1227	358	117	125	5	113	119	63	1211	\$ 10,932.00
Apr. 14	1211	326	85	110	4	132	104	116	1205	\$ 11,085.00
May.14	1205	315	110	115	24	180	99	63	1268	\$ 10,813.50
Jun.14	1268	417	116	113	16	168	125	86	1168	\$ 10,636.00
Jul.14	1168	430	(+) 119	(-) 126	(-) 20	185	109	93	(=) 1141	\$ 11,582.50
Aug.14	1141	430	(+) 126	(-) 114	(-) 29	139	107	97	(=) 1124	\$ 10,538.00
Sep-14	1124	354	(+) 143	(-) 93	(-) 13	120	134	103	(=) 1161	\$ 10,771.00
Oct-14	1161	320	(+) 186	(-) 154	(-) 11	132	144	108	(=) 1182	\$ 11,309.00
Nov-14	1182	326	(+) 144	(-) 81	(-) 2	116	92	78	(=) 1243	\$ 11,267.00
Dec-14	1243	403	(+) 140	(-) 106	(-) 10	133	93	104	(=) 1267	\$ 12,237.00
Jan-15	1267	349	(+) 109	(-)113	(-) 1	139	58	100	(=) 1262	\$ 12,164.00
Feb-15	1262	325	(+) 120	(-) 102	(-) 0	110	81	65	(=)1280	\$ 10,672.50
Mar-15	1280	375	(+) 144	(-) 86	(-) 20	147	63	91	(=) 1318	\$ 13,136.50
Apr-15	1318	358	(+) 167	(-) 110	(-) 11	105	111	108	(=) 1364	\$ 13,337.55
May-15	1364	342	(+) 140	(-) 95	(-) 4	116	77	109	(=) 1405	\$ 12,004.00
Jun-15	1405	328	(+) 134	(-)159	(-) 11	139	134	86	(=) 1369	\$ 11,774.00
Jul-15	1369	336	(+) 120	(-)130	(-) 14	106	130	109	(=) 1345	\$ 11,271.00
Aug-15	1345	301	(+) 114	(-)162	(-) 14	112	110	75	(=) 1283	\$ 11,320.05
Sep-15	1283	378	(+) 133	(-)120	(-) 15	116	123	79	(=) 1281	\$ 11,405.50
Oct-15	1281	414	(+) 134	(-)120	(-) 7	120	131	64	(=) 1288	\$ 11,374.63
Nov-15	1288	407	(+) 112	(-)105	(-) 3	89	113	92	(=) 1292	\$ 10,976.50
Dec-15	1292	410	(+) 123	(-)101	(-) 1	93	102	71	(=) 1313	\$ 11,203.13

**Dallas County Department of Criminal Justice/Jail Diversion
Alternative Sentencing Program (ASP) and Bond/Electronic Monitoring Program
Statistical Summary Report
DECEMBER 2015**

CASELOAD INFORMATION

	12/15 ASP	12/15 Bond	12/15 Ch. Sup	12/15 TOTAL	ASP TOTAL	Bond TOTAL	Ch. Sup TOTAL	Total 9-01-09 - 12-31-15
Beginning Client Count	12	100	0	112	3	3	9(5/13)	15
Total Clients That Started The Program	13	21	0	34	1,502	1,034	89	2,625
Total Cases Closed	19	17	0	36	1,499	933	98	2,530
Closed Successfully	18	9	0	27	1,469	600	74	2,143
Closed Unsuccessfully	1	8	0	9	30	333	24	387
Total Clients at End of Month	6	104	0	110				

PROGRAM DISTRIBUTION FOR CLOSED CASES

	ASP	Bond	Ch. Sup	TOTAL	ASP	Bond	Ch. Sup	TOTAL
Full House Arrest	0	1	0	1	188	72	14	274
House Arrest w/work/school release	19	0	0	19	1,264	0	1	1,265
GPS w/work/school release	0	16	0	16	47	861	83	991
MEMS-Alcohol Monitor	9	0	0	9	571	53	0	624

CASELOAD NON-COMPLIANCE INFORMATION

	ASP	Bond	Ch. Sup	TOTAL	ASP	Bond	Ch. Sup	TOTAL
Violation Reports Submitted	3	53	0	56	74	1,159	46	1,279
Unsuccessful Removal from Program	1	8	0	9	30	333	24	387
Failed to Start Program/Warrant Issued	0	0	0	0	12	17	1	30
Interviewed but Rejected for Program	0	0	0	0	3	33	2	38
New Offenses Committed while in Program	0	0	0	0	4	23	5	32

CASELOAD ACTIVITIES

	12/15	TOTAL
Orientation Interviews Conducted	34	2,671
Computer Checks for Warrants & New Offenses	214	3,636
Telephone Contacts with Clients	652	35,605
Telephone Contacts with Non Clients	187	10,576
In Person Contacts with Clients-Office & Field	465	24,780
In Person Contacts with Non Clients-Office and Field	99	3,892

DALLAS COUNTY FUNDS SAVED

	12/15	Total 9-01-09 - 12-31-15
ELM Days Served/Jail Bed Days Saved	3,594	170,613
Cost of Jail Bed Per Day	\$ 69.38	SEE ADDENDUM
TOTAL JAIL BED EXPENSES SAVED	\$249,351.72	\$ 10,144,395.09

0

ASP/BOND ELM
Jail Bed Cost Savings Addendum

Time Period	Cost per Day	Days	Total Cost Saved
9/09	\$55.60	393	\$ 21,850.80
10/09 to 9/10	\$48.49	7,589	\$ 367,990.61
10/10 to 09/11	\$57.49	16,277	\$ 934,212.50
10/11 to 09/12	\$53.13	23,536	\$ 1,250,467.68
10/12 to 09/13	\$56.29	30,368	\$ 1,709,414.72
10/13 to 9/14	\$62.46	41,130	\$ 2,568,979.80
10/14 to 9/15	\$63.11	40,706	\$ 2,568,955.66
10/15 to 12/15	\$69.38	10,614	\$ 722,523.32
		Total Days: 170,613	Total Savings \$10,144,395.09

Time Period	ASP	Bond	Total clients served during month	Total jail bed days saved	County pay clients	Clients who paid something	Clients that didn't pay (not county paid)	Fees collected by Sentinel
10/15	43	115	158	3,613	37	103	18	\$22,207.40
11/15	35	113	148	3,407	25	108	15	\$29,962.00
12/15	25	121	146	3,594	31	98	17	\$30,779.10

FY2016 Public Defender's Office Summary Statistics for Misdemeanor Courts December 2015		
Court/Judge	New Cases	Total Dispositions
CCC #1/Patterson (2 PD AVG 200)	190	181
CCC #2/Hayes (1 PD AVG 100)	133	109
CCC #3/Skemp (2 PD AVG 200)	200	188
CCC #4/Mulder (2 PD AVG 200)	200	222
CCC #5/Green (1 PD AVG 100)	100	89
CCC #6/King (1 PD AVG 100)	100	119
CCC #7/Crowder (2 PD AVG 200)	188	205
CCC #8/Yoo (1 PD AVG 100)	97	44
CCC #9/Hoffman (1 PD AVG 100)	100	122
CCC #10/Canás (1 PD AVG 75)	42	53
CCC #11/Kelly (1 PD AVG 75)	75	70
CCCAP #2/Rosenfield (1 PD AVG 100)	100	80
Floater (1 PD AVG 100)	0	0
Y-T-D Totals	1525	1482
Courts are required to assign an average of 100 cases per month to each PD.		

CCC #7: One position in this two PD court was vacant until December 21, 2016.

CCC #10: Court is a family violence court and the numbers in this court are typically low.

CCC #11: Court is a family violence court and the numbers in this court are typically low. Court did not have sufficient amount of cases to assign to PD.

Floater: Position vacant until filled.

FY2016 Public Defender's Office Summary Statistics for Felony Courts December 2015		
Court/Judge	New Cases	Total Dispositions
CDC - Burns (1 PD AVG. 30)	38	27
CDC #2 - Adams (2 PD AVG. 60)	45	42
CDC #3 - G. Lewis (2 PD AVG. 60)	65	53
CDC #4 - Collins (3 PD AVG. 90)	90	85
CDC #5 - Thompson (2 PD AVG. 60)	60	62
CDC #6 - Howard (1 PD AVG. 30)	33	27
CDC #7 - Frizell (2 PD AVG. 60)	61	119
194th - White (2 PD AVG. 60)	60	56
195th - Tinsley (2 PD AVG. 60)	60	40
203rd - Hawthorne (1 PD AVG. 30)	35	31
204th - Kemp (1 PD AVG. 30)	37	31
265th - Bennett (2 PD AVG. 60)	46	58
282nd - Givens (2 PD AVG. 60)	48	36
283rd - Magnis (4 PD AVG. 120)	110	86
291st - Mitchell (2 PD AVG. 60)	63	45
292nd - Birmingham (2 PD AVG. 60)	62	53
363rd - Holmes (2 PD AVG. 60)	64	57
Y-T-D Totals	977	908
Courts are required to assign between 30 & 35 cases per month per PD.		

283: One PD in this four PD court was out on FMLA for part of the month.

HARRY INGRAM			FY2016 ATLAS STATISTICS									203/HAWTHORNE					
MONTH	BEGINNING # OF PENDING CASES	+NEW CASES RECEIVED THIS MONTH	=TOTAL CASES	TBJ	TBC	PLEAS	REV	GRADUATES	PROBATION MODIFICATIONS	DISMISSALS	OTHERS	TOTAL DISPOSITIONS	ENDING # PENDING CASES **	CURRENT ATLAS PARTICIPANTS	CURRENT PARTICIPANTS IN CUSTODY	FORMER ATLAS PARTICIPANTS	BOND
December	24	3	27	0	0	0	0	0	0	0	2	2	25	21	2	0	19

HARRY INGRAM			FY2016 MISDEMEANOR MENTAL HEALTH COURT STATS									CCCAP1/WADE				
MONTH	BEGINNING # OF PENDING CASES	Rediverts	+NEW CASES RECEIVED THIS MONTH	=TOTAL CASES	TBJ	TBC	PLEAS	DISMISSAL	OTHER	TOTAL DISPOSITIONS	ENDING # PENDING CASES **	CURRENT PARTICIPANTS	NUMBER OF GRADUATES	BOND***		
December	113	0	7	120	0	0	4	5	1	10	110	35	3	35		

December 2015			FY2016 MHPD STATS									
MONTH	BEGINNING # OF PENDING CASES	+NEW CASES RECEIVED THIS MONTH	=TOTAL CASES	TRIALS	PLEAS	COND. DISM.	REVO-CATION	DISMISSALS	INCOMPETENT	REFERALS	OTHER COUNSEL APPT.	TOTAL CLOSED
R. LENOX	194	41	235	0	5	6	1	13	0	0	18	43
L. TAYLOR	255	30	285	0	1	3	3	1	0	0	3	11

MALCOM HARDEN			FY2016 FELONY COMPETENCY STATISTICS													
MONTH	BEGINNING # OF CASES	NEW CASES THIS MONTH	TBJ	TBC	Alt. Trial Dispos.	PLEAS	REVO-CATION S	DISMISSALS	PROBATION	COMP. HRG.	EXTENSIONS	CIVIL COMMIT.	MHMR REFERRAL	CONSULTS	OTHER	ENDING # OF PEOPLE IN OCR
December	94	7	0	0	0	4	0	0	0	9	6	0	0	0	5	10

MALCOM HARDEN			FY2016 MISDEMEANOR COMPETENCY STATISTICS													
MONTH	BEGINNING # OF CASES	NEW CASES THIS MONTH	TBJ	TBC	Alt. Trial Dispos.	PLEAS	REVO-CATION S	DISMISSALS	PROBATION	COMP. HRG.	EXTENSIONS	CIVIL COMMIT.	MHMR REFERRAL	CONSULTS	OTHER	ENDING # OF PEOPLE IN OCR
December	46	21	0	0	0	0	0	22	0	21	5	1	0	0	3	21

December 2015			MI Court										
MONTH	TOTAL NEW CASES RECEIVED	NEW CLIENTS AT GREEN OAKS	NEW CLIENTS AT MEDICAL CENTER MCKINNEY	NEW CLIENTS AT PARKLAND	NEW CLIENTS AT DALLAS BEHAVIORAL HEALTH	NEW CLIENTS AT HICKORY TRAILS	NEW CLIENTS AT ZALE LIPSHY	NEW CLIENTS AT SUNDANCE BEHAVIORAL HEALTHCARE	NEW CLIENTS AT OCEANS BEHAVIORAL HOSPITAL	PROBABLE CAUSE HEARINGS HELD	NO CONTEST COMMIT	CONTESTED COMMIT	FORCED MEDS HEARING IN COURT
L. ROBERTS	199	196	0	1	0	0	2	0	0	10	0	11	11
L. TAYLOR	25	0	0	15	1	1	8	0	0	1	3	4	6
J. LEA	29	20	0	4	1	0	3	0	0	5	1	0	1

RANDA BLACK			MI COURT						
MONTH	NEW CLIENTS	PROBABLE CAUSE HEARINGS HELD	NO CONTEST COMMIT TO TSH	CONTESTED COMMIT TO TSH	RECOMMENDATIONS	MEDICATION HEARINGS	OUTPATIENT	JURY TRIAL	
December	90	11	5	15	2	15			

ATRS

01-15-16

Efficiency of the Evaluation Process

The average lag time of the clinical evaluations during the month of December was 8 days with a range of 0-17.

Productivity (Screens & Evaluations)

(3 Divert jail evaluations not captured below)

Week	Screens	Evaluations
09/14/15	35	42
09/21/15	42	44
09/28/15	48	48
10/05/15	38	47
10/12/15	61	56
10/19/15	48	50
10/26/15	49	42
11/02/15	46	51
11/09/15	30	44
11/16/15	55	51
11/23/15	15	35
11/30/15	56	53
12/07/15	35	49
12/14/15	47	56
12/21/15	4	14
12/28/15	3	15
Averages	38.25	43.56

CSCD Residential Placements

CURRENT FACILITY CENSUS – 01/12/16:

17 JTC MALE beds available – 25 waiting, admitting 5 today 01/12
1 JTC FEMALE bed available – 9 waiting, admitting 1 today 01/12

5 DDC MALE beds available – 5 waiting, admitting 2 tomorrow 01/13
1 DDC FEMALE bed available – 13 waiting, admitting 1 tomorrow 01/13

39 RELAPSE MALE beds available – 1 waiting, admitting 1 on Monday 01/25

JTC CENSUS: 228 (149 males, 79 females)

DDC CENSUS: 54 (25 males, 29 females)

RELAPSE CENSUS: 5 males

TOTAL CENSUS: 287

Community Residential

Homeward Bound

Census: 2 (+2 state wide program)

Waiting: 2 (including statewide)

Nexus Recovery Center

Census: No updated census received

Waiting: 2 (including PPWC)

The Salvation Army

Census: 6 (with 2 more)

Waiting: 4

Out of County Residential Placements

(extension of JTC beds)-We have no probationers at out of county facilities but may send a couple to Hidalgo soon

Jail Competency Stats 2015

	Jan	Feb	March	April	May	June	July	Aug	Sept	Oct	Nov	Dec	Totals
Active													
New Evals - Incompetent	48	61	39	38	43	41	46	51	41	44	55	35	542
Waiting for the hospital - End of month	31	43	73	84	79	71	55	58	52	52	60	79	
Less than 30 days	24	26	55	33	29	35	25	33	29	25	22	43	
30 to 60 days	5	12	13	38	24	16	12	9	8	17	22	22	
Greater than 60 days	2	5	5	13	26	20	18	16	15	10	16	14	
Returned to jail from the hospital	13	8	13	15	22	16	23	26	22	22	21	16	217
Felony	8	7	10	11	16	12	18	22	19	14	15	13	
Average length of stay (days)	105	102	80	85	100	79	101	124	100	121	95	117	
Misdemeanor	5	1	3	4	6	4	5	4	3	8	6	3	
Average length of stay (days)	91	56	84	80	71	54	64	66	75	89	76	93	
Previous return legal case pending	27	43	30	36	23	36	26	23	20	18	17	19	318
Less than 30 days	5	12	8	9	0	0	0	0	0	0	0	0	
1 to 3 months	7	13	6	10	6	20	12	11	12	10	8	9	
3 to 6 months	10	11	8	5	7	4	5	4	2	4	5	6	
> 6 months	5	7	8	12	10	12	9	8	6	4	4	4	
Closed													
New Evals - Competent	28	38	37	36	33	33	39	27	40	35	41	27	414
Admitted to the state hospital	35	18	35	13	34	38	40	26	34	26	21	20	340
Felony	24	11	22	8	24	21	26	17	23	20	17	15	
Average wait for a hospital bed (days)	61	59	56	54	54	79	76	50	69	67	87	59	
Misdemeanor	11	7	13	5	10	17	14	9	11	6	4	5	
Average wait for a hospital bed (days)	39	39	49	42	42	60	45	39	37	46	42	56	
Hospital Return Legal Case Resolved	22	11	23	29	20	22	16	27	21	21	17	24	253
Less than 30 days	16	2	6	7	8	8	7	18	8	12	11	18	
1 to 3 months	5	1	9	14	9	11	5	3	9	4	6	4	
3 to 6 months	1	7	3	2	3	1	3	4	2	4	0	2	
> 6 months	0	1	5	6	0	2	1	2	2	1	0	0	
Case dismissed at the hospital	1	5	6	12	0	6	4	4	5	4	0	0	47
Felony	0	0	1	1	0	1	0	0	0	0	0	0	
Misdemeanor	1	5	5	11	0	5	4	4	5	4	0	0	

Monthly NorthSTAR Intakes

Month-Year	Total inmates booked into the jail with a NorthStar match	Book in Totals for the month	% of people with a NorthStar match booked into the jail
2007 Total	6501	93413	7%
2008 Total	8200	99580	8%
2009 Total	10636	98407	11%
2010 Total	12994	96245	14%
2011 Total	15810	90429	17%
2012 Total	17036	83524	20%
2013 Total	17762	81010	22%
Jan-14	1464	6639	22%
Feb-14	1308	6109	21%
Mar-14	1399	6261	22%
Apr-14	1535	6587	23%
May-14	1430	6456	22%
Jun-14	1375	5832	24%
Jul-14	1489	6453	23%
Aug-14	1523	6227	24%
Sep-14	1427	5936	24%
Oct-14	1504	6072	25%
Nov-14	1213	5429	22%
Dec-14	1252	5167	24%
2014 Total	16919	73168	23%
Jan-15	1432	5941	24%
Feb-15	1231	5164	24%
Mar-15	1546	5979	26%
Apr-15	1584	6350	25%
May-15	1504	5901	25%
Jun-15	1441	5848	25%
Jul-15	1535	6357	24%
Aug-15	1479	6103	24%
Sep-15	1360	5697	24%
Oct-15	1386	5713	24%
Nov-15	1192	5042	24%
Dec-15	1296	5090	25%
2015 Total	16986	69185	25%