



Dallas Deflects - What?

Stops the cycle of arrests, detentions, hospitalizations, and homelessness for people with mental illness and co-occurring substance use disorders.

Dallas Deflects - How?

Provides clients a trauma-informed case management plan, where the client receives a wide range of community-based health and social services.

Dallas Deflects - Who?

A Collaborative Project Between

- Dallas County District Attorney's Office
- Dallas Police Department
- Parkland Hospital
- North Texas Behavioral Health Authority (NTBHA)
- Housed and Operated: Homeward Bound, Inc.

Dallas Deflects

Homeward Bound, Inc.

5300 University Hills Boulevard

Dallas, TX 75241

Phone: 214.941.3500



Dallas Deflects

Breaking the cycle of recidivism for people with mental illness and co-occurring substance use disorders.



Phone: 214.941.3500

DALLAS DEFLECTS IS AN ALTERNATIVE TO ARRESTING INDIVIDUALS SUFFERING FROM MENTAL ILLNESS WHO HAVE COMMITTED CERTAIN LOW-LEVEL, NON-VIOLENT MISDEMEANOR OFFENSES.

The goals are to:

- Keep individuals charged with certain low-level, non-violent misdemeanor offenses from entering the criminal justice system.
- Reduce costs associated with repeatedly jailing individuals suffering from mental illness.
- Reduce the number of psychiatric emergency visits.

SERVICES

- 24-48 hour observation and short-term crisis respite beds.
- Integrated care and individual treatment plans to assist with stabilization.
- Comprehensive Discharge Plan with Case Management.
- A warm handoff to the appropriate level of care, i.e., detox, transitional housing.

WELCOME



Dallas Deflects provides a welcome to individuals from the minute they arrive.

Peer Support workers greet individuals upon arrival; people with a shared experience of mental health and recovery are there to assist and advocate for the individual.

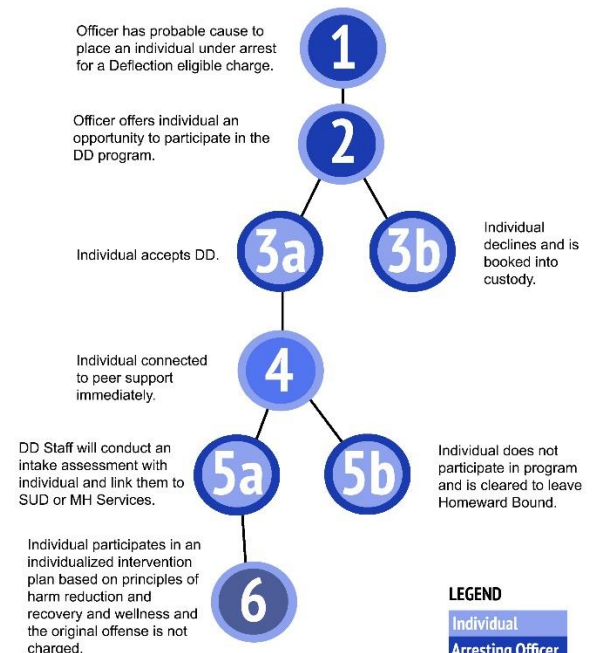


WHY DIVERSION?

- Even brief periods in jail cause significant life challenges for persons with mental illness, jeopardizing employment, housing, and benefits.
- The Dallas County Jail is one of the main treatment centers for people with mental illnesses who are justice-involved.
- The Dallas County jail is the second largest mental health treatment facility in Texas.

OFFICER INVOLVEMENT

The role of the officer is to: 1) determine eligibility 2) transport & 3) enroll individual in the facility



DALLAS DEFLECTS
Program Entry Work Flow