



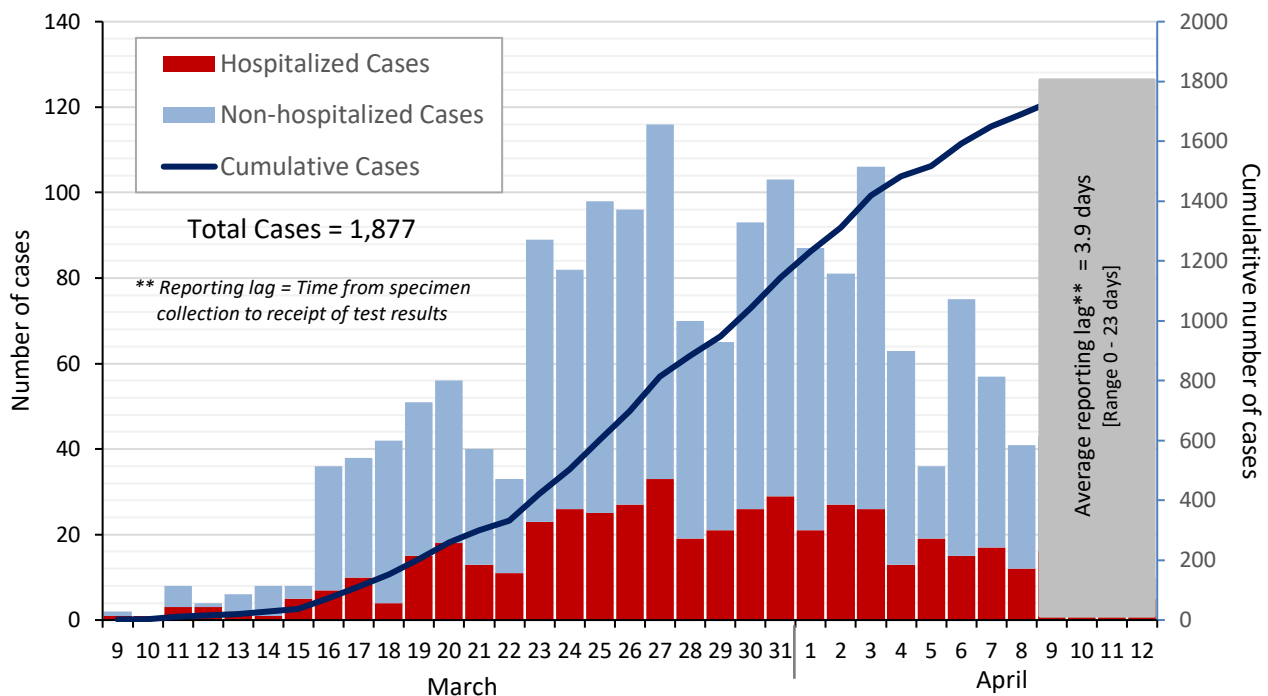
# Dallas County Health and Human Services 2019 Novel Coronavirus (COVID-19) Summary

April 14, 2020

- As of April 14, 2020, DCHHS is reporting 89 additional cases of 2019 novel coronavirus (COVID-19), bringing the total case count in Dallas County to 1,877, including 42 deaths.
- Of cases requiring hospitalization, most have been either over 60 years of age or have had at least one known high-risk chronic health condition. Diabetes has been an underlying high-risk health condition reported in about a third of all hospitalized patients with COVID-19.
- Most (69%) deaths have been male. Fourteen deaths have been associated with long-term care facilities.
- The percentage of respiratory specimens testing positive for SARS-CoV-2 was 14.3% at area hospitals in week 14.
- New COVID-19 cases are reported as a daily aggregate, with detailed summaries updated Tuesdays and Fridays.

**Figure 1.** Daily and Cumulative COVID-19 Cases by Date of Test collection, Dallas County: March 10 – April 12, 2020\*

\*The data in this summary reflect cumulative PCR test results in Dallas County residents received as of 8:00 pm, April 13, 2020. All data are preliminary and subject to change as cases represented are being actively investigated, and may be updated between press releases.



**Table 1.** Cumulative COVID-19 Cases by Age Groups and Gender, Dallas County

Age Group	# Cases (N=1,785)	% of Total Cases <sup>†</sup>
0 to 17	33	2%
18 to 40	620	33%
41 to 60	689	37%
over 60	443	24%
Sex		
Female	844	47%
Male	941	53%

<sup>†</sup> Percentages are calculated among cases with known age/sex

**Table 2.** Source of Laboratory Testing for Reported COVID-19 Positive Cases, Dallas County

Source of Laboratory Testing for Reported Positive Tests	# Tests (N=1,877)	% of Total Cases
Commercial or Hospital Laboratory*	1,717	91%
Dallas LRN Laboratory	149	8%
Other Public Health Laboratory	11	1%

\* Includes: AIT, ARUP, CPL, Excelsior, LabCorp, Magnolia, Medfusion, Prism, Quest, Viracor, and multiple hospital laboratories

**Table 3.** Respiratory Virus Testing by North Texas Hospitals: March 22 – April 4, 2020 (CDC Weeks 13-14)

Week Ending	3/28/20		4/4/20	
	Positive/Total Tests	% Positive	Positive/Total Tests	% Positive
SARS-CoV-2 Novel Coronavirus	172 /1,490	11.5%	344 /2,412	14.3%
Influenza	14 /1,772	0.8%	5 /1,067	0.4%
Seasonal (non-SARS-2) Coronavirus	15 /1,123	1.3%	9 /545	1.7%
Adenovirus (respiratory)	15 /1,129	1.3%	11 /560	2.0%
Metapneumovirus	114 /1,129	10.1%	29 /630	4.6%
Rhinovirus/Enterovirus	99 /1,129	8.8%	43 /630	6.8%
RSV	10 /1,272	0.8%	4 /763	0.5%

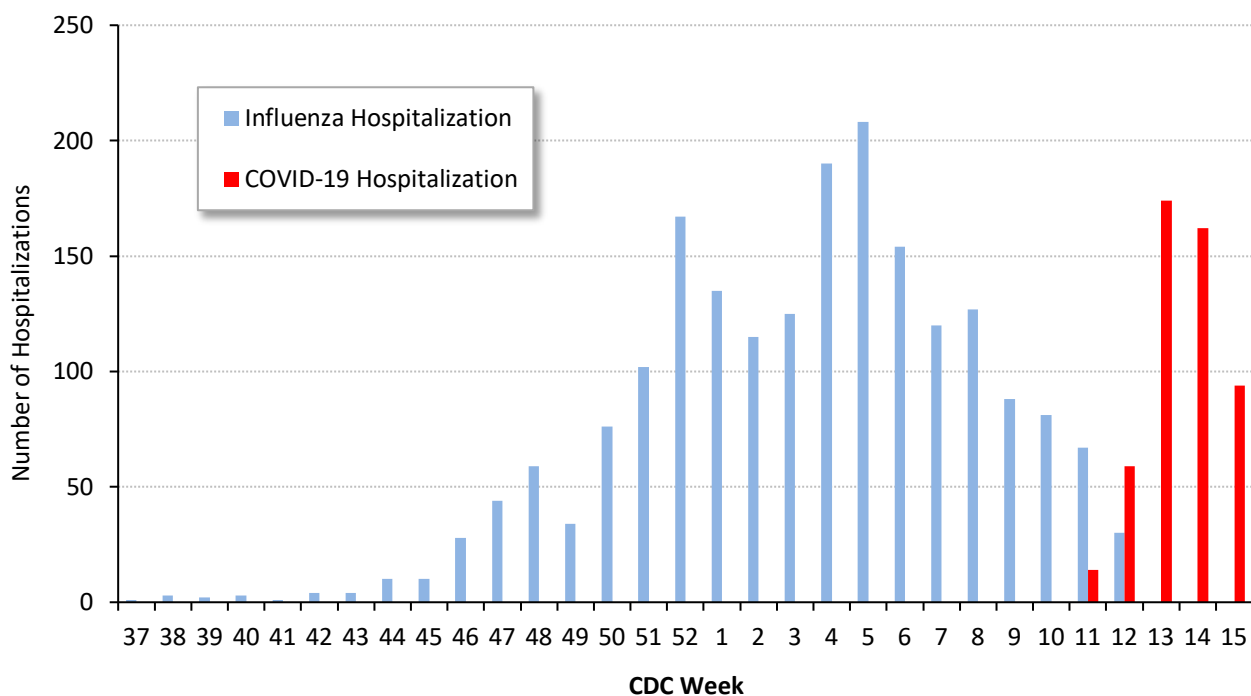
Data sources: National Respiratory and Enteric Virus Surveillance System and additional hospitals voluntarily reporting directly to DCHHS. Testing denominators include out-of-county patients and testing performed only through hospitals in Dallas County. (Does not include FEMA drive-thru clinics)

**Table 4.** Transmission Risk Factors for Cumulative COVID-19 Cases, Dallas County

Exposure Risk Factor	Cases (N= 1,877)	% of Total Cases
International Travel	54	2.9%
Domestic Travel (Out-of-state)	111	5.9%
Cruise Ship Travel	8	0.4%
Long-Term Care Facility (Residency)	120	6.4%
Jail (Inmate)	36	1.9%
Close contact or Presumed Community Transmission*	1,546	82.4%

\*Includes: household transmission, and cases with no other exposure risk factors identified

**Figure 2.** Influenza and COVID-19 Hospitalizations by Week of Admission, Dallas County: September 2019 through week ending April 11, 2020 (CDC Week 15)\*



\*The data in this summary reflect cumulative data received as of 7:00 pm yesterday for hospitalized Dallas County residents diagnosed with confirmed COVID-19 by PCR testing. All data are preliminary and subject to change as cases represented are being actively investigated, and may be updated between press releases.

**Table 5.** Cumulative COVID-19 Case Characteristics, Dallas County: March 10 – April 13, 2020

	Non-Hospitalized Cases	%
<i>Not Hospitalized</i>	N = 1,367	73% of Total Cases
Outpatient/ Urgent Care/ Drive-through	1,109	81%
Emergency Department only	258	19%

	Hospitalized Cases	%	
<i>Ever Hospitalized</i>	N = 510	27% of Total Cases	
Admitted to Intensive Care Unit	173	34%	
Mechanical Ventilation	102	20%	
Female	214	42%	
Male	296	58%	
≥60 yrs age	245	48%	
Presence of ≥1 high risk condition	289	57%	
Diabetes	159	31%	
Lung Disease (e.g. COPD, asthma)	72	14%	
Heart Disease (e.g. CHF)	66	13%	
Kidney Disease (e.g. ESRD, dialysis)	38	7%	
Cancer, Immune-compromise	46	9%	
Pregnancy	4	1%	
Race/ Ethnicity	White	97	19%*
	Hispanic	150	29%*
	Black	123	24%*
	Other	25	5%*
	Non-reported/ Unknown	115	23%

\* Percentages can also be calculated to exclude cases for which race/ethnicity was unknown (not reported).

	Deaths	%	
	N = 42	2% of Total Cases	
Female	13	31%	
Male	29	69%	
Age Group	<65 yrs	12	29%
	≥65 yrs	30	71%
	≥80 yrs	17	40%
Presence of ≥1 high risk condition	29	85%**	
Diabetes	16	47%**	
Race/ Ethnicity	White	17	<b>40%</b> (29% of population)†
	Hispanic	11	<b>26%</b> (41% of population)†
	Black	12	<b>29%</b> (24% of population)†
	Other	2	<b>5%</b> (6% of population)†

\*\*Percentages are of 34 cases for which underlying high-risk health conditions were reported.

† 2019 U.S. Census population estimates for Dallas County

**Table 6.** Summary of Influenza and COVID-19 Hospitalizations and Deaths from Dallas County Hospitals, Vital Statistics and Medical Examiner’s Office

Week Ending	03/07	03/14	03/21	03/28	04/04	4/11	9/08/19– Present
CDC Week	10	11	12	13*	14*	15*	
Influenza hospitalizations <sup>1</sup>	81	67	30	N/A	N/A	N/A	1,990
Influenza ICU admissions <sup>1</sup>	9	7	7	N/A	N/A	N/A	281
Confirmed influenza-associated deaths <sup>2</sup>	2	0	0	N/A	N/A	N/A	25
COVID-19 hospitalizations <sup>3</sup>	0	14	58	174*	162*	94*	510*
COVID-19 ICU admissions <sup>3</sup>	0	6	22	59*	55*	25*	173*
Confirmed COVID-19-associated deaths	0	0	3	11*	6*	15*	42*

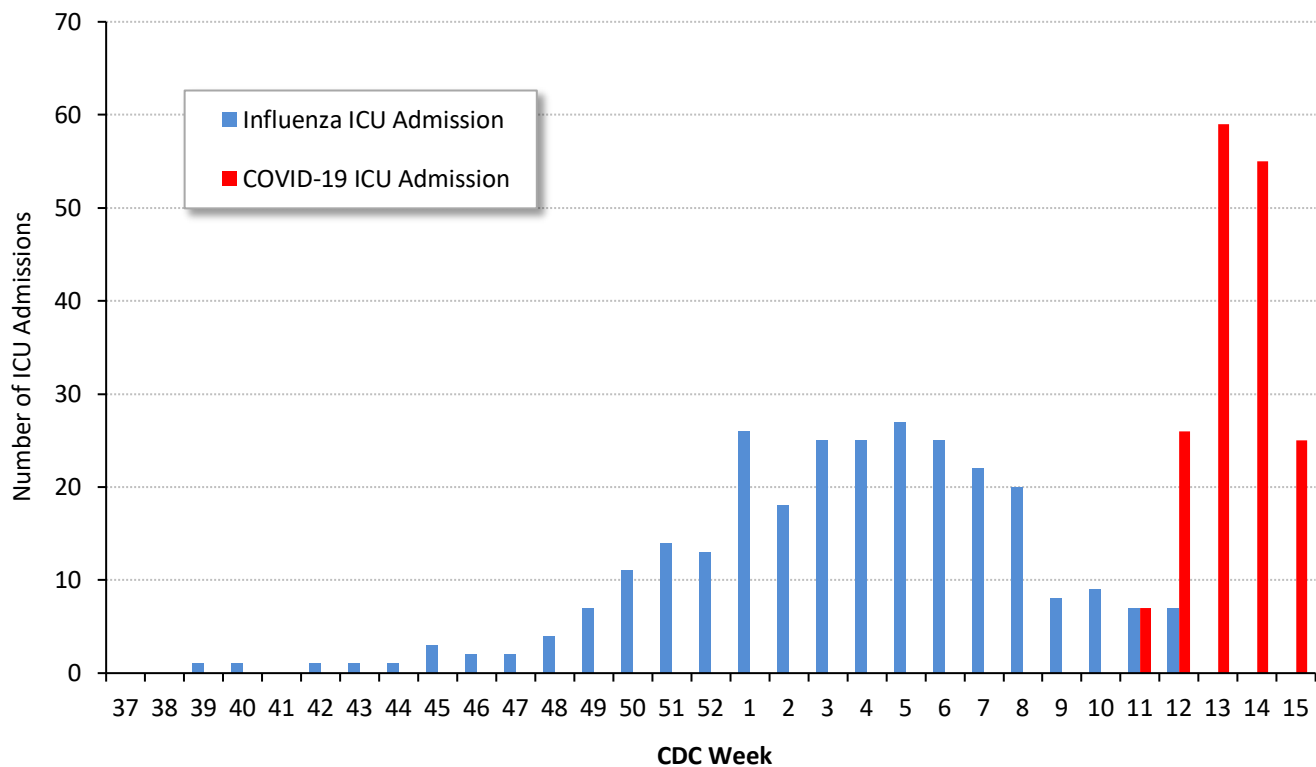
\*All data are preliminary and subject to change as additional information is received.

<sup>1</sup> Reflects all influenza-associated hospitalizations reported from 14 hospitals located within Dallas County by week of any positive influenza tests.

<sup>2</sup> Confirmed influenza-associated deaths as defined by a positive laboratory test and any of the following: (1) death certificate denotation, (2) medical record documentation of compatible symptoms and clear progression from illness to death, or (3) determination by the County Medical Examiner’s office (ME) of no alternate cause of death. Does not include possible influenza-associated deaths with pending determination of primary cause of death.

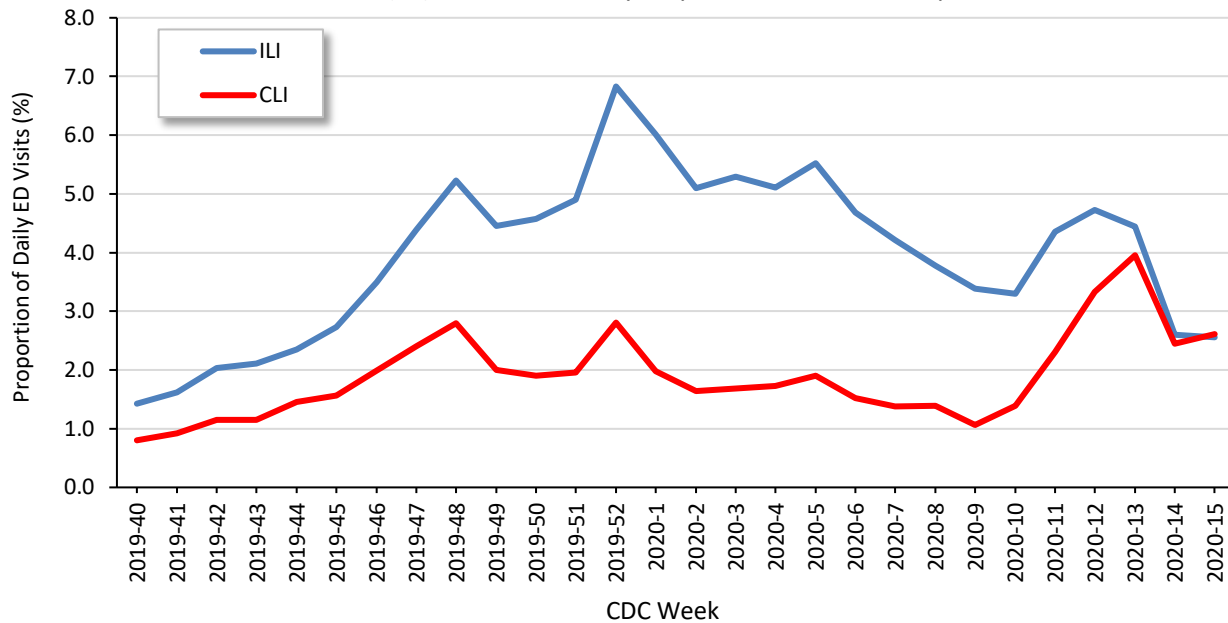
<sup>3</sup> Reflect all COVID-19-associated hospitalizations reported from area hospitals within Dallas County by week of admission; data as of 7:00 pm yesterday.

**Figure 3.** Intensive Care Unit Hospitalizations for Influenza and COVID-19 by Week of Admission, Dallas County: September 2019 through week ending April 11, 2020 (CDC Week 15)\*



\* New ICU admissions of Dallas County residents reported with confirmed COVID-19 by PCR testing. The data in this summary reflect cumulative data received as of 7:00 pm yesterday. All data are preliminary and subject to change as cases represented are being actively investigated, and may be updated between press releases.

**Figure 4.** Syndromic Surveillance of Emergency Department Visits for COVID-like Illness (CLI)\* and Influenza-like Illness (ILI)\*\*, Dallas County: September 29, 2019 – April 11, 2020



ESSENCE Data is from 18 hospital emergency departments voluntarily reporting numbers of persons presenting with self-reported chief complaints.

\* CLI is defined as chief complaint of fever and cough or shortness of breath or difficulty breathing.

\*\*ILI is defined as chief complaint of fever and cough or sore throat or mention of influenza.

**Table 7.** Cumulative COVID-19 Cases by City of Residence within Dallas County

(e.g. Does not include cases who reside in portions of cities which are not within Dallas County.)

City of Residence	Cases (N=1,877)	% of Total Cases
Addison	13	0.7%
Balch Springs	12	0.6%
Carrollton	28	1.5%
Cedar Hill	38	2.0%
Coppell	21	1.1%
Dallas	1,045	55.7%
DeSoto	68	3.6%
Duncanville	21	1.1%
Farmers Branch	29	1.5%
Garland	191	10.2%
Glenn Heights	10	0.5%
Grand Prairie	54	2.9%
Highland Park	14	0.7%
Irving	135	7.2%
Lancaster	31	1.7%
Mesquite	69	3.7%
Richardson	31	1.7%
Rowlett	33	1.8%
Sachse	8	0.4%
Seagoville	3	0.2%
Sunnyvale	4	0.2%
University Park	18	1.0%
Wilmer	1	0.1%

<b>CDC Priorities for COVID-19 Testing (rev. date: 3/24/20)</b> (See CDC Guidance for Evaluating and Reporting Persons Under Investigation (PUI) at: <a href="https://www.cdc.gov/coronavirus/2019-nCoV/hcp/clinical-criteria.html">https://www.cdc.gov/coronavirus/2019-nCoV/hcp/clinical-criteria.html</a> )
<b>PRIORITY 1: Ensure optimal care options for all hospitalized patients, lessen the risk of nosocomial infections, and maintain the integrity of the healthcare system</b> <ul style="list-style-type: none"> <li>• Hospitalized patients</li> <li>• Symptomatic healthcare workers</li> </ul>
<b>PRIORITY 2: Ensure those who are at highest risk of complication of infection are rapidly identified and appropriately triaged</b> <ul style="list-style-type: none"> <li>• Patients in long-term care facilities with symptoms</li> <li>• Patients 65 years of age and older with symptoms</li> <li>• Patients with underlying conditions with symptoms</li> <li>• First responders with symptoms</li> </ul>
<b>PRIORITY 3: As resources allow, test individuals in the surrounding community of rapidly increasing hospital cases to decrease community spread, and ensure health of essential workers</b> <ul style="list-style-type: none"> <li>• Critical infrastructure workers with symptoms</li> <li>• Individuals who do not meet any of the above categories with symptoms</li> <li>• Healthcare workers and first responders</li> <li>• Individuals with mild symptoms in communities experiencing high COVID-19 hospitalizations</li> </ul>
<b>NON-PRIORITY</b> <ul style="list-style-type: none"> <li>• Individuals without symptoms</li> </ul>

**Many thanks to our area hospitals and healthcare providers for reporting lab-confirmed COVID-19 cases**

**DCHHS Acute Communicable Disease Epidemiology Division: [COVID-19@dallascounty.org](mailto:COVID-19@dallascounty.org)**

**[DCHHS COVID-19 Case Report Form](https://www.dallascounty.org/departments/dchhs/2019-novel-coronavirus.php): <https://www.dallascounty.org/departments/dchhs/2019-novel-coronavirus.php>**