



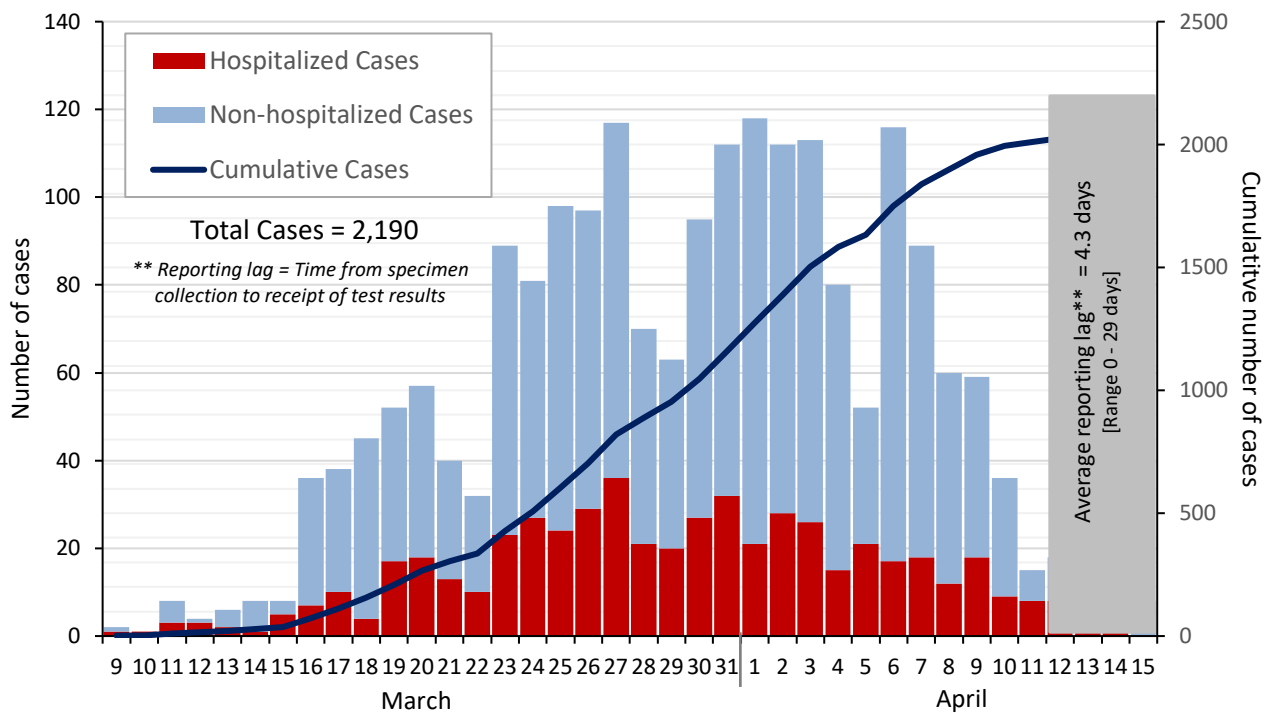
# Dallas County Health and Human Services 2019 Novel Coronavirus (COVID-19) Summary

April 17, 2020

- As of April 17, 2020, DCHHS is reporting 124 additional cases of 2019 novel coronavirus (COVID-19), bringing the total case count in Dallas County to 2,190, including 55 deaths.
- The numbers of hospital admissions and intensive care hospitalizations for COVID-19 for the week ending 4/11 (Week 15) declined from the preceding 2 weeks.
- Of 543 cases requiring hospitalization, most have been either over 60 years of age or have had at least one known high-risk chronic health condition. Diabetes has been an underlying high-risk health condition reported in about a third of all hospitalized patients with COVID-19.
- Most (69%) deaths have been male. Twenty deaths have been associated with long-term care facilities.
- The percentage of respiratory specimens testing positive for SARS-CoV-2 was 10.8% at area hospitals in week 15.

**Figure 1.** Daily and Cumulative COVID-19 Cases by Date of Test collection, Dallas County: March 10 – April 15, 2020\*

\*The data in this summary reflect cumulative PCR test results received as of 8:00 pm, April 16, 2020. All data are preliminary and subject to change as cases represented are being actively investigated, and may be updated between press releases. Includes only cases in Dallas County residents.



\*\*Reporting lag = Time from specimen collection to receipt of test results

**Table 1.** Cumulative COVID-19 Cases by Age Groups and Gender, Dallas County

Age Group (years)	# Cases (N=2,190)	% of Total Cases <sup>+</sup>
0 to 17	41	2%
18 to 40	722	33%
41 to 64	931	37%
≥65	443	24%
Sex		
Female	998	48%
Male	1,101	52%

<sup>+</sup> Percentages are calculated among cases with known age/sex

**Table 2.** Source of Laboratory Testing for Reported COVID-19 Positive Cases, Dallas County

Source of Laboratory Testing for Reported Positive Tests	# Tests (N=2,190)	% of Total Cases
Commercial or Hospital Laboratory*	1,991	91%
Dallas LRN Laboratory	185	8%
Other Public Health Laboratory	14	1%

\* Includes: AIT, ARUP, CPL, Excelsior, LabCorp, Magnolia, Medfusion, Prism, Quest, Viracor, and multiple hospital laboratories

**Table 3.** Respiratory Virus Testing by North Texas Hospitals: March 22 – April 11, 2020 (CDC Weeks 13-15)

Week Ending	3/28/20		4/4/20		4/11/20	
	Positive/Total Tests	% Positive	Positive/Total Tests	% Positive	Positive/Total Tests	% Positive
SARS-CoV-2 Novel Coronavirus	172 /1,490	11.5%	344 /2,412	14.3%	236 /2,189	10.8%
Influenza	14 /1,772	0.8%	5 /1,067	0.4%	1 /301	0.3%
Seasonal (non-SARS-2) Coronavirus	15 /1,123	1.3%	9 /545	1.7%	0 /293	0%
Adenovirus (respiratory)	15 /1,129	1.3%	11 /560	2.0%	5 /293	1.7%
Metapneumovirus	114 /1,129	10.1%	29 /630	4.6%	14 /293	4.8%
Rhinovirus/Enterovirus	99 /1,129	8.8%	43 /630	6.8%	18 /293	6.1%
RSV	10 /1,272	0.8%	4 /763	0.5%	1 /343	0.3%

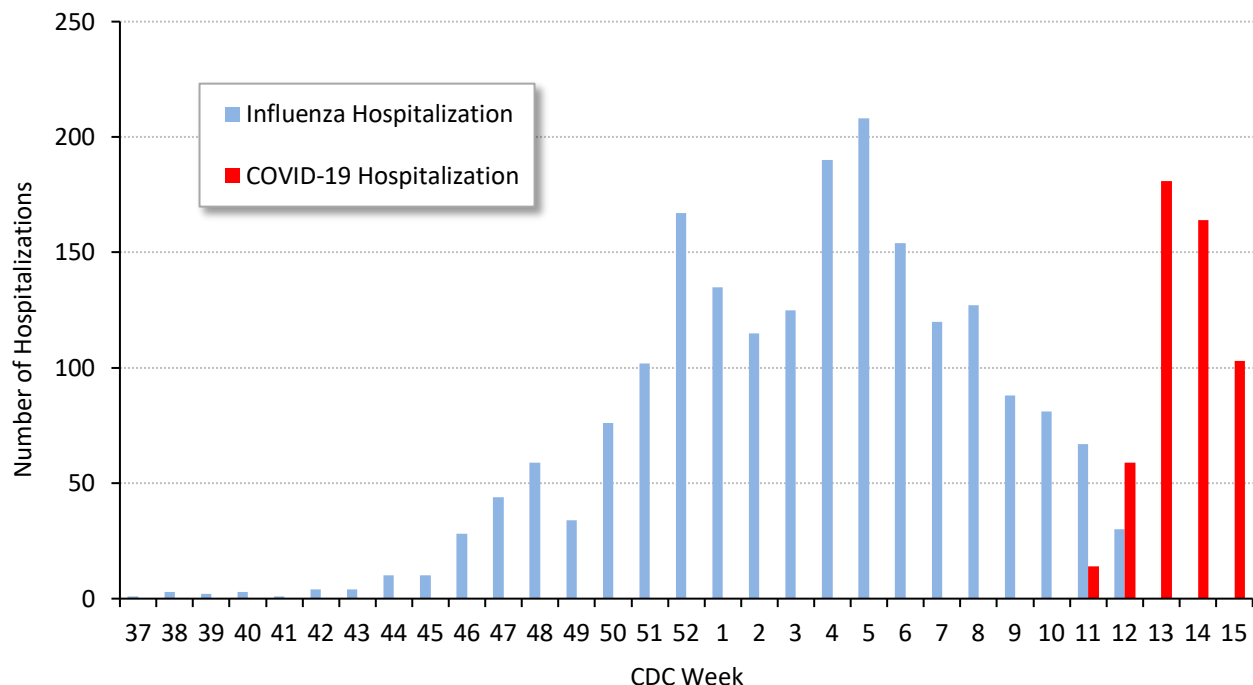
Data sources: National Respiratory and Enteric Virus Surveillance System and additional hospitals voluntarily reporting directly to DCHHS. Testing denominators include out-of-county patients and testing performed only through hospitals in Dallas County. (Does not include FEMA drive-thru clinics)

**Table 4.** Transmission Risk Factors for Cumulative COVID-19 Cases, Dallas County

Exposure Risk Factor	Cases (N= 2,190)	% of Total Cases
International Travel	54	2.5%
Domestic Travel (Out-of-state)	111	5.1%
Cruise Ship Travel	8	0.4%
Long-Term Care Facility (Residency)	157	7.2%
Jail (Inmate)	47	2.1%
Close contact or Presumed Community Transmission*	1,806	82.5%

\*Includes: household transmission, and cases with no other exposure risk factors identified

**Figure 2.** Influenza and COVID-19 Hospitalizations by Week of Admission, Dallas County: September 2019 through week ending April 11, 2020 (CDC Week 15)\*



\*The data in this summary reflect cumulative data received as of 7:00 pm yesterday for hospitalized Dallas County residents diagnosed with confirmed COVID-19 by PCR testing. All data are preliminary and subject to change as cases represented are being actively investigated, and may be updated between press releases.

**Table 5.** Cumulative COVID-19 Case Characteristics, Dallas County: March 10 – April 16, 2020

		Non-Hospitalized Cases	%
<i>Not Hospitalized</i>		N = 1,647	75% of Total Cases
Outpatient/ Urgent Care/ Drive-through		1,394	85%
Emergency Department only		253	15%
		Hospitalized Cases	%
<i>Ever Hospitalized</i>		N = 543	25% of Total Cases
Admitted to Intensive Care Unit		182	25%
Mechanical Ventilation		109	20%
Male		315	58%
Age Group (years)	0-17	1	0%
	18-40	79	15%
	41-64	252	46%
	≥65	211	39%
Presence of ≥1 high risk condition		304	56%
Diabetes		169	31%
Lung Disease (e.g. COPD, asthma)		77	14%
Heart Disease (e.g. CHF)		75	14%
Kidney Disease (e.g. ESRD, dialysis)		47	9%
Cancer, Immune-compromise		56	10%
Pregnancy		5	1%
Race/ Ethnicity	White	112	21%*
	Hispanic	175	32%*
	Black	150	28%*
	Other	28	5%*
	Non-reported/ Unknown	78	14%

\* Percentages can also be calculated to exclude cases for which race/ethnicity was unknown (not reported).

		Deaths	%
		N = 55	3% of Total Cases
Male		37	67%
Age Group (years)	18-40	2	4%
	41-64	11	20%
	≥65	42	76%
Presence of ≥1 high risk condition		41	85%**
Diabetes		19	47%**
Race/ Ethnicity	White	24	<b>40%</b> (29% of population)†
	Hispanic	15	<b>26%</b> (41% of population)†
	Black	13	<b>29%</b> (24% of population)†
	Other	3	<b>5%</b> (6% of population)†

\*\* Percentages are of 51 cases for which underlying health conditions were reported

† 2019 U.S. Census population estimates for Dallas County

**Table 6.** Summary of Influenza and COVID-19 Hospitalizations and Deaths from Dallas County Hospitals, Vital Statistics and Medical Examiner’s Office

Week Ending	03/07	03/14	03/21	03/28	04/04	4/11	4/18	9/08/19– Present
CDC Week	10	11	12	13	14*	15*	16*	
Influenza hospitalizations <sup>1</sup>	81	67	30	N/A	N/A	N/A	N/A	1,990
Influenza ICU admissions <sup>1</sup>	9	7	7	N/A	N/A	N/A	N/A	281
Confirmed influenza-associated deaths <sup>2</sup>	2	0	0	N/A	N/A	N/A	N/A	25
COVID-19 hospitalizations <sup>3</sup>	0	14	59	181	164*	103*	22*	543*
COVID-19 ICU admissions <sup>3</sup>	0	7	27	59	54*	27*	8*	182*
Confirmed COVID-19-associated deaths	0	0	3	11	8*	15*	18*	55*

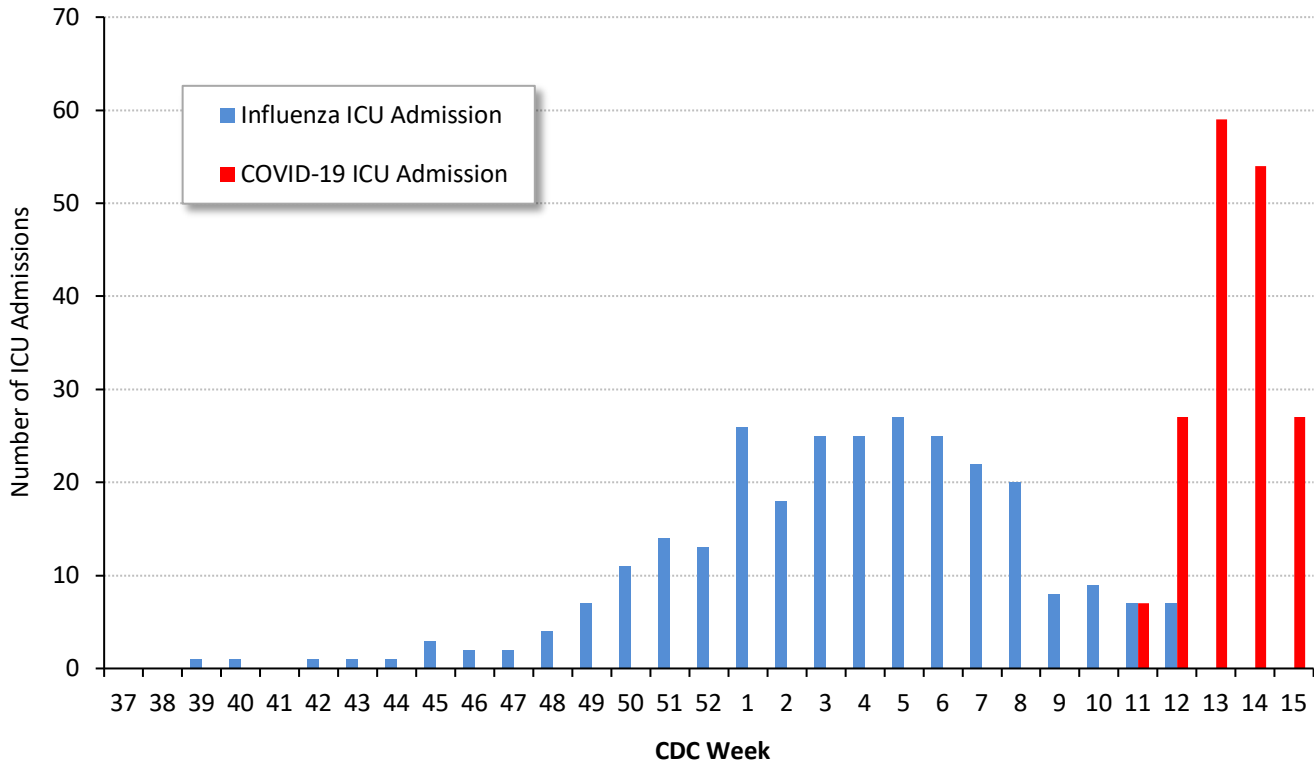
\*All data are preliminary and subject to change as additional information is received.

<sup>1</sup> Reflects all influenza-associated hospitalizations reported from 14 hospitals located within Dallas County by week of any positive influenza tests.

<sup>2</sup> Confirmed influenza-associated deaths as defined by a positive laboratory test and any of the following: (1) death certificate denotation, (2) medical record documentation of compatible symptoms and clear progression from illness to death, or (3) determination by the County Medical Examiner’s office (ME) of no alternate cause of death. Does not include possible influenza-associated deaths with pending determination of primary cause of death.

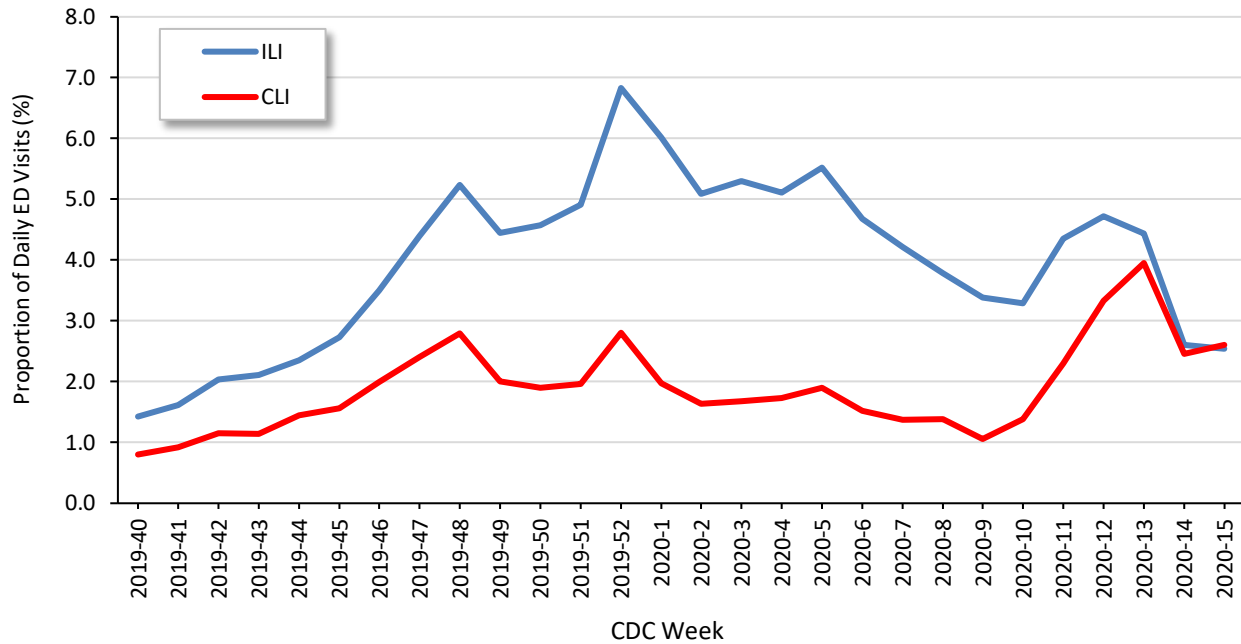
<sup>3</sup> Reflect all COVID-19-associated hospitalizations reported from area hospitals within Dallas County by week of admission; data as of 7:00 pm yesterday.

**Figure 3.** Intensive Care Unit Hospitalizations for Influenza and COVID-19 by Week of Admission, Dallas County: September 2019 through week ending April 11, 2020 (CDC Week 15)\*



\*Patients diagnosed with confirmed COVID-19 by PCR testing. The data in this summary reflect cumulative data received as of 7:00 pm yesterday. All data are preliminary and subject to change as cases represented are being actively investigated, and may be updated between press releases. Includes only cases in Dallas County residents.

**Figure 4.** Syndromic Surveillance of Emergency Department Visits for COVID-like Illness (CLI)\* and Influenza-like Illness (ILI)\*\*, Dallas County: September 29, 2019 – April 11, 2020



ESSENCE Data is from 18 hospital emergency departments voluntarily reporting numbers of persons presenting with self-reported chief complaints.

\* CLI is defined as chief complaint of fever and cough or shortness of breath or difficulty breathing.

\*\*ILI is defined as chief complaint of fever and cough or sore throat or mention of influenza.

**Table 7.** Cumulative COVID-19 Cases by City of Residence within Dallas County as of April 16, 2020  
(e.g. Does not include cases who reside in portions of cities which are not within Dallas County.)

City of Residence	Cases (N=2,190)	% of Total Cases
Addison	15	0.7%
Balch Springs	14	0.6%
Carrollton	30	1.4%
Cedar Hill	42	1.9%
Cockrell Hill	4	0.2%
Coppell	22	1.0%
Dallas	1,205	55.0%
DeSoto	75	3.4%
Duncanville	23	1.1%
Farmers Branch	33	1.5%
Garland	215	9.8%
Glenn Heights	10	0.5%
Grand Prairie	60	2.7%
Highland Park	14	0.6%
Irving	193	8.8%
Lancaster	34	1.6%
Mesquite	83	3.8%
Richardson	38	1.7%
Rowlett	38	1.7%
Sachse	9	0.4%
Seagoville	4	0.2%
Sunnyvale	5	0.2%
University Park	22	1.0%
Wilmer	1	0.0%
Wylie	1	0.0%

<b>CDC Priorities for COVID-19 Testing (rev. date: 3/24/20)</b> (See CDC Guidance for Evaluating and Reporting Persons Under Investigation (PUI) at: <a href="https://www.cdc.gov/coronavirus/2019-nCoV/hcp/clinical-criteria.html">https://www.cdc.gov/coronavirus/2019-nCoV/hcp/clinical-criteria.html</a> )
<p><b>PRIORITY 1: Ensure optimal care options for all hospitalized patients, lessen the risk of nosocomial infections, and maintain the integrity of the healthcare system</b></p> <ul style="list-style-type: none"> <li>• Hospitalized patients</li> <li>• Symptomatic healthcare workers</li> </ul>
<p><b>PRIORITY 2: Ensure those who are at highest risk of complication of infection are rapidly identified and appropriately triaged</b></p> <ul style="list-style-type: none"> <li>• Patients in long-term care facilities with symptoms</li> <li>• Patients 65 years of age and older with symptoms</li> <li>• Patients with underlying conditions with symptoms</li> <li>• First responders with symptoms</li> </ul>
<p><b>PRIORITY 3: As resources allow, test individuals in the surrounding community of rapidly increasing hospital cases to decrease community spread, and ensure health of essential workers</b></p> <ul style="list-style-type: none"> <li>• Critical infrastructure workers with symptoms</li> <li>• Individuals who do not meet any of the above categories with symptoms</li> <li>• Healthcare workers and first responders</li> <li>• Individuals with mild symptoms in communities experiencing high COVID-19 hospitalizations</li> </ul>
<p><b>NON-PRIORITY</b></p> <ul style="list-style-type: none"> <li>• Individuals without symptoms</li> </ul>

**Many thanks to our area hospitals and healthcare providers for reporting lab-confirmed COVID-19 cases**

New COVID-19 cases are reported as a daily aggregate, with this cumulative summary updated Tuesdays and Fridays.

DCHHS COVID-19 Summaries and Case Report Form are accessible at:

<https://www.dallascounty.org/departments/dchhs/2019-novel-coronavirus.php>

**DCHHS Acute Communicable Disease Epidemiology Division:** COVID-19@dallascounty.org