



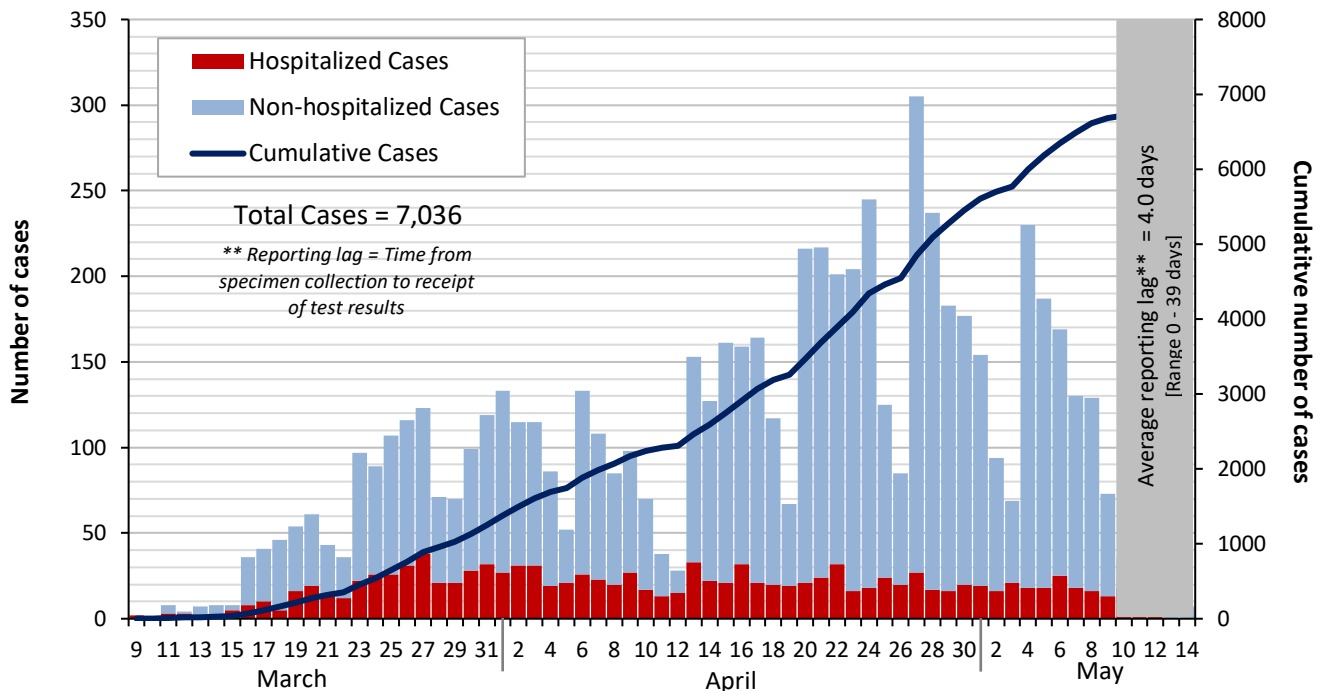
# Dallas County Health and Human Services 2019 Novel Coronavirus (COVID-19) Summary

May 15, 2020

- As of May 15, 2020, DCHHS is reporting 199 additional cases of 2019 novel coronavirus (COVID-19), bringing the total case count in Dallas County to 7,036, including 164 deaths.
- Of 1,221 cases requiring hospitalization, two-thirds (67%) were under 65 years of age, and about half did not have any chronic health conditions. Diabetes has been an underlying high-risk health condition reported in under a third of all hospitalized patients with COVID-19.
- Of cases requiring hospitalization who reported employment, over 80% have been critical infrastructure workers, with a broad range of affected occupational sectors, including: healthcare, transportation, food and agriculture, public works, finance, communications, clergy, first responders and other essential functions.
- Thirty-nine percent (39%) of deaths have been associated with long-term care facilities.
- The percentage of respiratory specimens testing positive for SARS-CoV-2 was 10.9% at area hospitals in week 19.

**Figure 1. Daily and cumulative COVID-19 cases by date of test collection, Dallas County: March 10 – May 15, 2020\***

\*PCR test data received as of 8:00 pm, May 14, 2020, for residents of Dallas County tested with known specimen collection dates. All data are preliminary and subject to change as cases represented are being actively investigated and as additional reports are received for the most recent



\*\*Reporting lag = Time from specimen collection to receipt of test results

**Table 1. Source of laboratory testing for confirmed cases of COVID-19, Dallas County**

| Source of Laboratory Testing for Reported Positive PCR Tests | # Tests (N=7,036) | % of Total Cases |
|--|-------------------|------------------|
| Commercial or Hospital Laboratory*                           | 6,431             | 91%              |
| Dallas LRN Laboratory  | 593               | 9%               |
| Other Public Health Laboratory                               | 12                | 0%               |

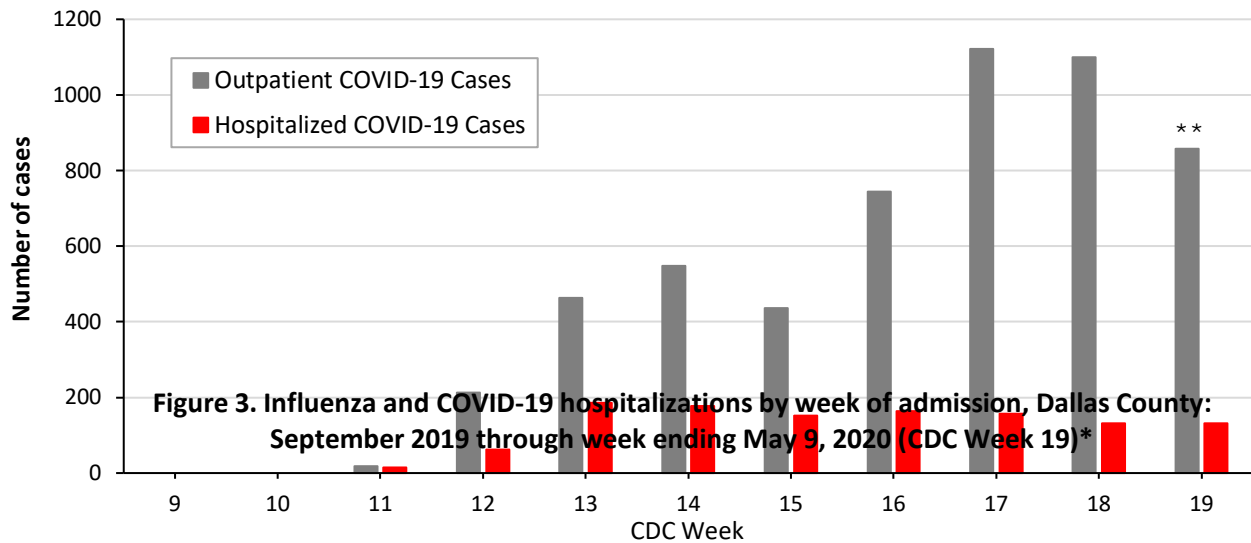
**Table 2. Characteristics of cumulative confirmed COVID-19 cases, Dallas County: March 9 – May 15, 2020**

\* Includes: AIT, ARUP, CPL, Excelsior, LabCorp, Magnolia, Medfusion, Prism, Quest, Viracor, and multiple hospital laboratories

|   | Number    | % of Total Cases* |
|---|-----------|-------------------|
| Total Cases in Dallas County residents                                  | N = 7,036 | 100%              |
| Age Group (years)   | 0 to 17   | 398 (6%)          |
|   | 18 to 40  | 2,695 (39%)       |
|   | 41 to 64  | 2,909 (42%)       |
| Sex   | Female    | 2,651 (38%)       |
|   | Male      | 3,429 (49%)       |
| Not Hospitalized (Includes: Outpatient, urgent care, drive-through, ED) | 5,815     | 83%               |
| Ever Hospitalized   | 1,221     | 17%               |

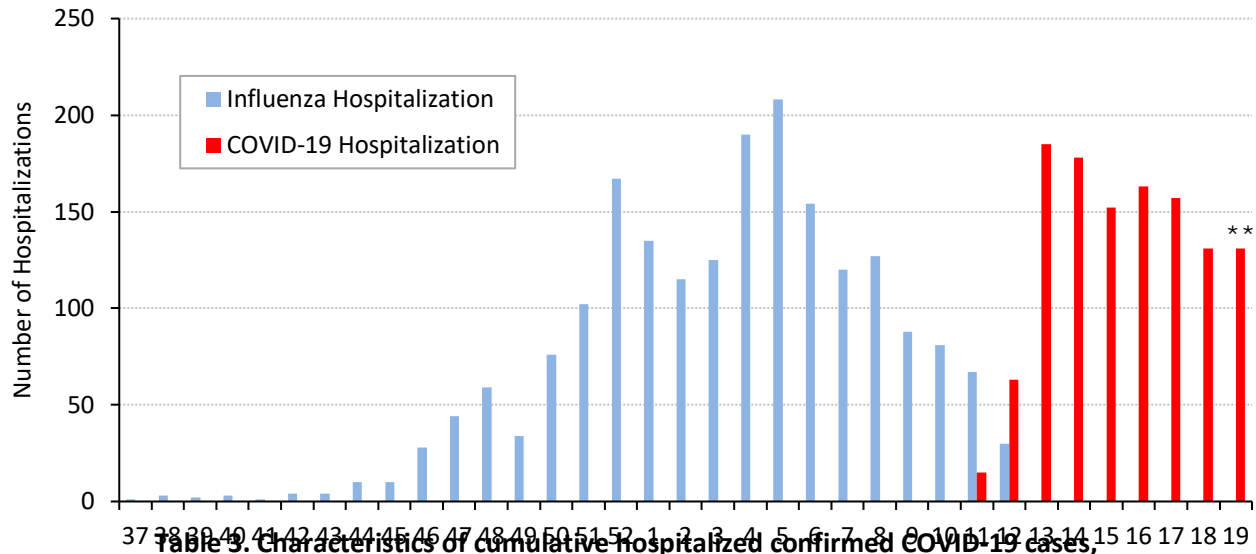
\* Percentages are calculated among cases with known age/sex

**Figure 2. Non-hospitalized\* and hospitalized COVID-19 Cases by week of test collection, Dallas County: September 2019 through week ending May 9, 2020 (CDC Week 19)\***



\*Non-hospitalized includes all patients not admitted to acute-care hospitals (e.g. outpatient, urgent care, drive-through, ED-only, LTCF)

\*\* All data are preliminary and subject to change as cases represented are being actively investigated and as additional reports are received.



**Table 3. Characteristics of cumulative hospitalized confirmed COVID-19 cases, Dallas County: March 10 – May 15, 2020**  
 \* Dallas County residents diagnosed with confirmed COVID-19 by PCR testing.  
 \*\* All data are preliminary and subject to change as cases represented are being actively investigated and as additional reports are received.

|                                      |                       | Hospitalized Cases | %                  |
|--------------------------------------|-----------------------|--------------------|--------------------|
| <b>Ever Hospitalized</b>             |                       | N = 1,221          | 17% of Total Cases |
| Admitted to Intensive Care Unit      |                       | 381                | 31%                |
| Mechanical Ventilation               |                       | 230                | 19%                |
| Sex                                  | Male                  | 696                | 57%                |
|                                      | Female                | 525                | 43%                |
| Age Group (years)                    | 0-17                  | 12                 | 1%                 |
|                                      | 18-40                 | 216                | 18%                |
|                                      | 41-64                 | 585                | 48%                |
|                                      | ≥65                   | 408                | 33%                |
| Presence of ≥1 high risk condition   |                       | 626                | 51%                |
| Diabetes                             |                       | 352                | 29%                |
| Lung Disease (e.g. COPD, asthma)     |                       | 151                | 12%                |
| Heart Disease (e.g. CHF)             |                       | 177                | 15%                |
| Kidney Disease (e.g. ESRD, dialysis) |                       | 119                | 10%                |
| Cancer, Immune-compromise            |                       | 102                | 8%                 |
| Pregnancy                            |                       | 17                 | 1%                 |
| Race/ Ethnicity                      | White                 | 193                | 16%*               |
|                                      | Hispanic              | 530                | 43%*               |
|                                      | Black                 | 258                | 21%*               |
|                                      | Other                 | 46                 | 4%*                |
|                                      | Non-reported/ Unknown | 194                | 16%                |

\* Percentages can also be calculated to exclude cases for which race/ethnicity was unknown (not reported)  
 \* Percentages can also be calculated to exclude cases for which race/ethnicity was not reported

**Table 4. Characteristics of cumulative confirmed COVID-19 deaths, Dallas County: March 10 – May 15, 2020**

**Table 5. Respiratory virus testing by North Texas hospitals: March 22 – May 9, 2020 (CDC Weeks 13-19)**

| <i>Death classified as confirmed if decedent was a Dallas County resident with a positive COVID-19 PCR test. Data are obtained from ME, hospitals, and vital statistics.</i> |          | Confirmed Deaths | % <sup>1</sup>                              |
|--|----------|------------------|---|
|  |          | N = 164          | 2% of Total Cases                           |
| Sex  | Male     | 108              | 66%   |
|  | Female   | 56               | 34%   |
| Age Group (years)  | 17-40    | 10               | 6%  |
|  | 41-64    | 42               | 26%   |
|  | ≥65      | 112              | 68%   |
| Resident of a Long-Term Care Facility  |          | 61               | 37%   |
| Presence of ≥1 high risk condition   |          | 103              | 71%   |
| Diabetes   |          | 60               | 41%   |
| Race/ Ethnicity  | White    | 54               | <b>33%</b> (29% of population) <sup>2</sup> |
|  | Hispanic | 58               | <b>35%</b> (41% of population) <sup>2</sup> |
|  | Black    | 39               | <b>24%</b> (24% of population) <sup>2</sup> |
|  | Asian    | 6                | <b>4%</b> (7% of population) <sup>2</sup>   |

<sup>1</sup> Percentages calculated among those with known underlying health conditions or race/ethnicity as reported by medical provider

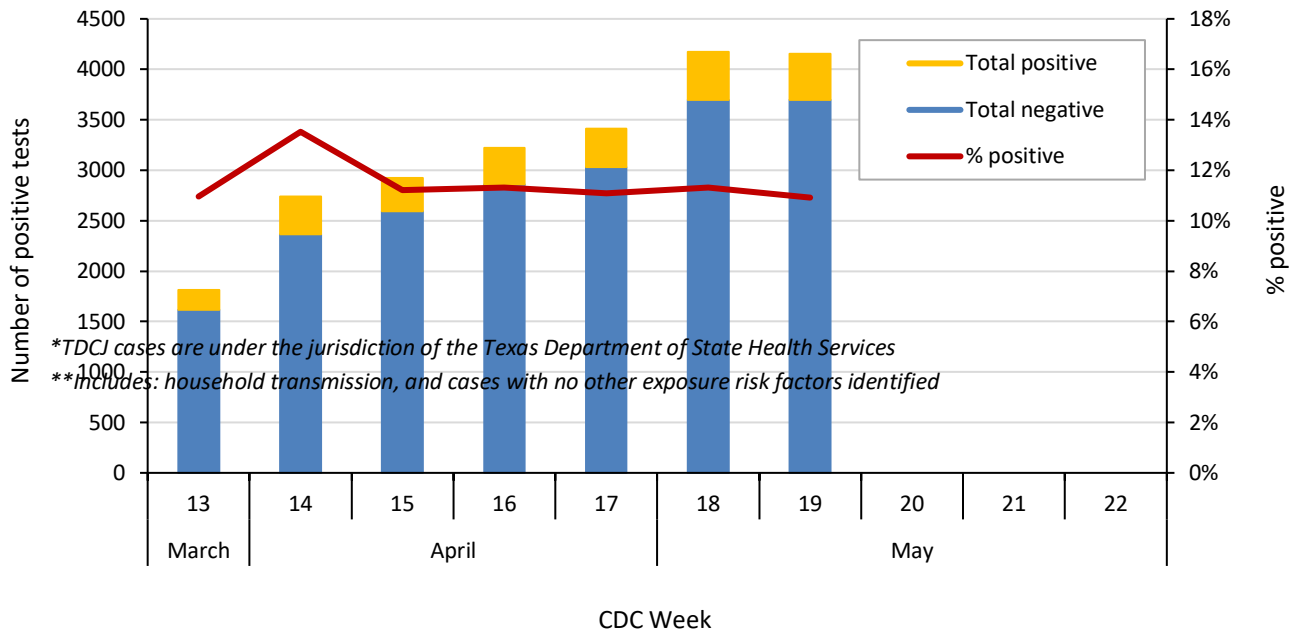
<sup>2</sup> 2019 U.S. Census population estimates for Dallas County

| Week Ending                             |             | 3/28/20      | 4/4/20       | 4/11/20      | 4/18/20      | 4/25/20      | 5/2/20       | 5/9/20       |
|---|-------------|--------------|--------------|--------------|--------------|--------------|--------------|--------------|
| SARS-CoV-2<br>Novel<br>Coronavirus      | Positive    | 199          | 370          | 327          | 364          | 378          | 472          | 453          |
|   | Total Tests | 1,816        | 2,736        | 2,920        | 3,221        | 3,409        | 4,171        | 4,151        |
|   | % Positive  | <b>11.0%</b> | <b>13.5%</b> | <b>11.2%</b> | <b>11.3%</b> | <b>11.1%</b> | <b>11.3%</b> | <b>10.9%</b> |
| Influenza                               | Positive    | 14           | 5            | 1            | 0            | 1            | 0            | 0            |
|   | Total Tests | 1,772        | 1,067        | 308          | 560          | 442          | 98           | 43           |
|   | % Positive  | <b>0.8%</b>  | <b>0.4%</b>  | <b>0.3%</b>  | <b>0%</b>    | <b>0.2%</b>  | <b>0%</b>    | <b>0%</b>    |
| Seasonal<br>(non-SARS-2)<br>Coronavirus | Positive    | 15           | 9            | 0            | 1            | 0            | 0            | 0            |
|   | Total Tests | 1,123        | 545          | 293          | 456          | 202          | 119          | 42           |
|   | % Positive  | <b>1.3%</b>  | <b>1.7%</b>  | <b>0%</b>    | <b>0.2%</b>  | <b>0%</b>    | <b>0%</b>    | <b>0%</b>    |
| Adenovirus<br>(respiratory)             | Positive    | 15           | 11           | 5            | 3            | 2            | 3            | 0            |
|   | Total Tests | 1,129        | 560          | 293          | 440          | 362          | 119          | 42           |
|   | % Positive  | <b>1.3%</b>  | <b>2.0%</b>  | <b>1.7%</b>  | <b>0.7%</b>  | <b>0.6%</b>  | <b>2.5%</b>  | <b>0%</b>    |
| Metapneumo-<br>virus                    | Positive    | 114          | 29           | 14           | 6            | 2            | 1            | 0            |
|   | Total Tests | 1,129        | 630          | 293          | 444          | 362          | 119          | 42           |
|   | % Positive  | <b>10.1%</b> | <b>4.6%</b>  | <b>4.8%</b>  | <b>1.4%</b>  | <b>0.6%</b>  | <b>0.8%</b>  | <b>0%</b>    |
| Rhinovirus/<br>Enterovirus              | Positive    | 99           | 43           | 18           | 20           | 16           | 5            | 2            |
|   | Total Tests | 1,129        | 630          | 293          | 444          | 362          | 119          | 42           |
|   | % Positive  | <b>8.8%</b>  | <b>6.8%</b>  | <b>6.1%</b>  | <b>4.5%</b>  | <b>4.4%</b>  | <b>4.2%</b>  | <b>4.8%</b>  |
| RSV                                     | Positive    | 10           | 7            | 1            | 1            | 0            | 1            | 0            |
|   | Total Tests | 1,272        | 763          | 350          | 461          | 370          | 121          | 43           |
|   | % Positive  | <b>0.8%</b>  | <b>0.5%</b>  | <b>0.3%</b>  | <b>0.2%</b>  | <b>0%</b>    | <b>0.8%</b>  | <b>0%</b>    |

Data sources: National Respiratory and Enteric Virus Surveillance System and additional hospitals voluntarily reporting directly to DCHHS. Testing denominators include out-of-county patients and testing performed only through hospitals in Dallas County. (Does not include FEMA drive-thru clinics)

Table 6. Transmission risk factors for cumulative confirmed COVID-19 cases, Dallas County

Figure 4. SARS-CoV-2 novel coronavirus positive tests reported to DCHHS by hospital laboratories: March 22 – May 9, 2020 (CDC Weeks 13-19)



| Exposure Risk Factor  | Cases (N= 7,036) | % of Total Cases |
|---|------------------|------------------|
| International Travel  | 58               | 0.8%             |
| Domestic Travel (Out-of-state)  | 125              | 1.8%             |
| Cruise Ship Travel  | 10               | 0.1%             |
| Long-Term Care Facility (Residency)   | 376              | 5.3%             |
| County Jail (Inmate)  | 309              | 4.4%             |
| State Jail (Inmate-- <a href="#">TDCJ COVID-19 Medical Action Center</a> )* | 22               | 0.3%             |
| Homeless Shelter  | 47               | 0.7%             |
| Meat/Food Processing Facilities   | 101              | 1.4%             |
| Close contact or Presumed Community Transmission**                          | 5,988            | 85.1%            |

| CDC Week   | 18* | 19* | 20* | Present |
|--|-----|-----|-----|---------|
| Influenza hospitalizations <sup>1</sup>            | 67  | 30  | N/A | 1,990   |
| Influenza ICU admissions <sup>1</sup>              | 7   | 7   | N/A | 281     |
| Confirmed influenza-associated deaths <sup>2</sup> | 0   | 0   | N/A | 25      |
| COVID-19 hospitalizations <sup>3</sup>             | 15  | 63  | 185 | 1,221*  |
| COVID-19 ICU admissions <sup>3</sup>               | 7   | 30  | 60  | 381*    |
| Confirmed COVID-19-associated deaths               | 0   | 3   | 11  | 164*    |

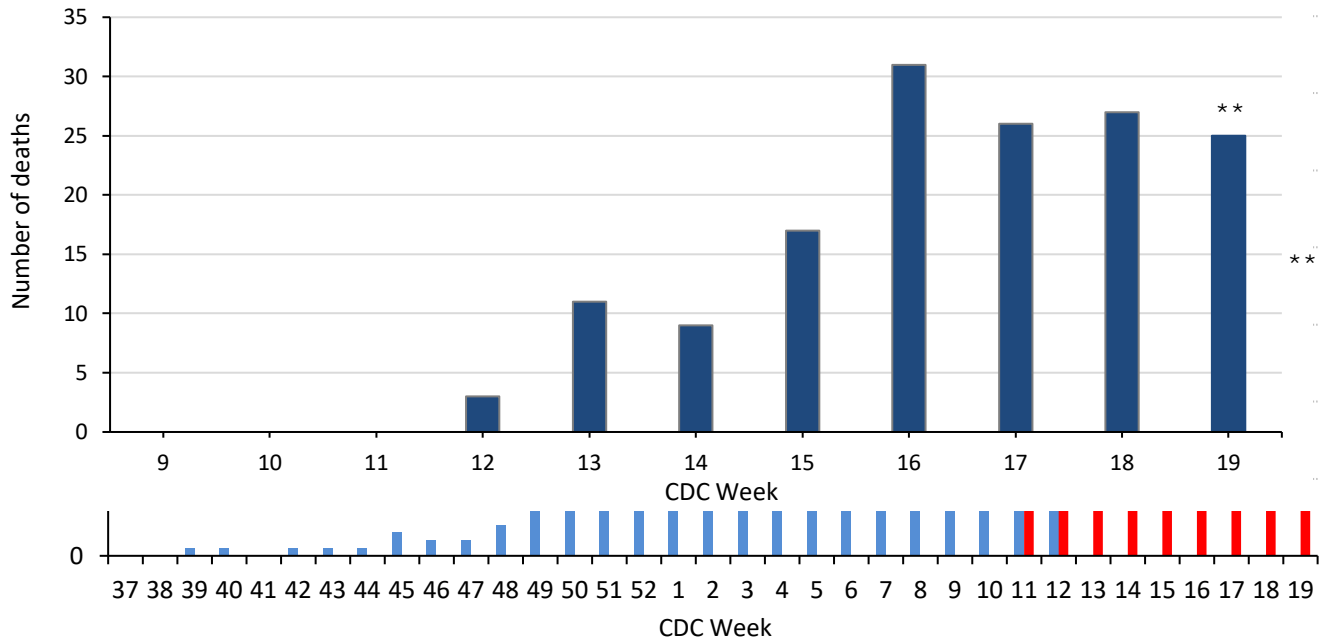
\*All data are preliminary and subject to change as additional information is received.

<sup>1</sup> Reflects all influenza-associated hospitalizations reported from 14 hospitals located within Dallas County by week of any positive influenza tests.

<sup>2</sup> Confirmed influenza-associated deaths as defined by a positive laboratory test and any of the following: (1) death certificate denotation, (2) medical record documentation of compatible symptoms and clear progression from illness to death, or (3) determination by the County Medical Examiner’s office (ME) of no alternate cause of death. Does not include possible influenza-associated deaths with pending determination of primary cause of death.

<sup>3</sup> Reflect all COVID-19-associated hospitalizations reported from area hospitals within Dallas County by week of admission; data as of 7:00 pm yesterday.

**Figure 6. Intensive care unit hospitalizations for influenza and COVID-19 by week of admission, Dallas County: September 2019 through week ending May 9, 2020 (CDC Week 19)\***



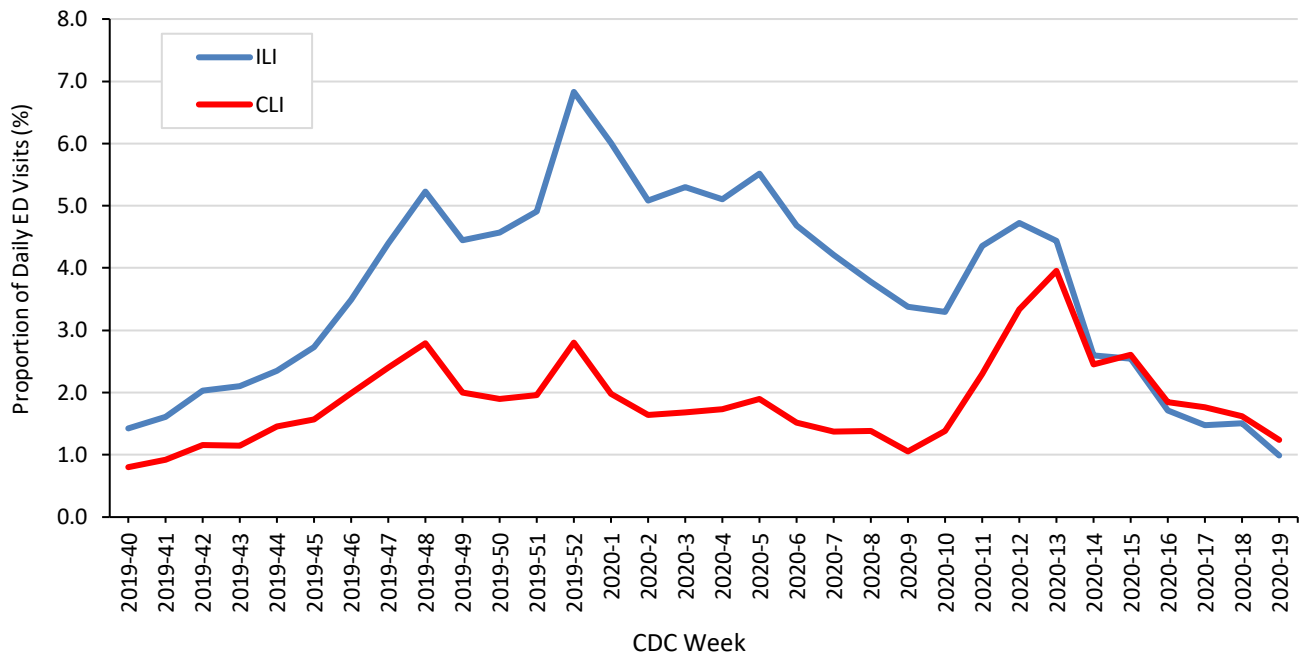
\* Dallas County residents reported with confirmed COVID-19 by PCR testing as of 7:00 pm yesterday. \*\*All data are preliminary and subject to change as cases represented are being actively investigated and as additional reports are received for the most recent week.

**Figure 7. Syndromic surveillance of emergency department visits for COVID-like illness (CLI)\* and Influenza-like illness (ILI)\*\*, Dallas County: September 29, 2019 – May 9, 2020**

**Figure 5. Confirmed COVID-19-associated deaths by week of death, Dallas County: March 2019 through week ending May 9, 2020 (CDC Week 19)\***

\* Dallas County residents diagnosed with confirmed COVID-19 by PCR testing.

\*\* All data are preliminary and subject to change as cases represented are being actively investigated and as additional reports are received.



ESSENCE Data is from 18 hospital emergency departments voluntarily reporting numbers of persons presenting with self-reported chief complaints.

\* CLI is defined as chief complaint of fever and cough or shortness of breath or difficulty breathing.

\*\*ILI is defined as chief complaint of fever and cough or sore throat or mention of influenza.

**Table 8. Occupations of hospitalized patients with confirmed COVID-19, Dallas County, 3/10 – 5/3/20**

| <i>Occupation</i>  | <i>Position</i>  | <i>Sector</i> |
|--|--|---------------|
| <b><i>Critical Infrastructure Workers*</i></b>   | <b>Hospitalized Cases<br/>(%) of Total Employed</b>  |               |
| Healthcare and Public Health   |  | 50 (18%)      |
|  | <i>Nurse, LVN, CNA</i>   | 13            |
|  | <i>Physician</i>   | 5             |
|  | <i>Other: Dentist, dietary, home health, medical assistant, mental health, PCT, pharmacist, physical therapy, facilities, administrative</i> | 29            |
| Transportation and Logistics   |  | 44 (16%)      |
|  | <i>Airline/Airport</i>   | 10            |
|  | <i>Parcel or postal delivery</i>   | 7             |
|  | <i>Cab/rideshare or bus driver</i>   | 7             |
|  | <i>Other: Mechanic, truck driver, freight, railroad</i>  | 20            |
| Food and Agriculture   |  | 41 (15%)      |
|  | <i>Grocery</i>   | 13            |
|  | <i>Restaurant</i>  | 15            |
|  | <i>Other: Food processing, production, supply</i>  | 13            |
| Other Community/Government Essential Functions   |  | 19 (8%)       |
|  | <i>Clergy (Pastor, priest)</i>   | 6             |
|  | <i>Education (Teacher, administration)</i>   | 5             |
|  | <i>Judicial system (Attorney)</i>  | 4             |
|  | <i>Real estate services</i>  | 3             |
| Public Works and Infrastructure Support Services                                       |  | 22 (8%)       |
|  | <i>Construction/Contractor</i>   | 15            |
| Financial ( <i>Accounting, bank, insurance</i> )                                       |  | 14 (5%)       |
| Communications and Information Technology  |  | 12 (4%)       |
| Commercial Facilities ( <i>Building materials, painting, warehouse</i> )               |  | 11 (4%)       |
| Hygiene Services ( <i>Custodian, Lawn Service</i> )                                    |  | 9 (3%)        |
| Law Enforcement, Public Safety, First Responders                                       |  | 7 (3%)        |
| Critical Manufacturing ( <i>Manufacturing metal, packaging</i> )                       |  | 4 (2%)        |
| Energy/Utilities ( <i>Electricity, petroleum, gas</i> )                                |  | 2 (1%)        |
| <b><i>Non-Critical Infrastructure Workers (Includes retail, personal services)</i></b> |  | 42 (15%)      |
| <b><i>Non-Employed (Includes retired)</i></b>  |  | 265           |
| <b><i>Student</i></b>  |  | 4             |
| <b><i>Not reported</i></b>   |  | 426           |
| <b><i>Total</i></b>  |  | 972           |

\* Includes only residents of Dallas County with self-reported occupational information. All data is preliminary and subject to change.

\*\*CISA Advisory Memorandum on Identification of Essential Critical Infrastructure Workers During COVID-19 Response, April 17, 2020.



**Table 9. Cumulative COVID-19 cases by city of residence within Dallas County as of May 15, 2020***(e.g. Does not include cases who reside in portions of cities which are not within Dallas County.)*

| <b>City of Residence</b> | <b>Cases (N=7,036)</b> | <b>% of Total Cases</b> |
|--------------------------|------------------------|-------------------------|
| Addison                  | 25                     | 0.4%                    |
| Balch Springs            | 70                     | 1.0%                    |
| Carrollton               | 89                     | 1.3%                    |
| Cedar Hill               | 109                    | 1.5%                    |
| Cockrell Hill            | 13                     | 0.2%                    |
| Combine                  | 1                      | 0.0%                    |
| Coppell                  | 31                     | 0.4%                    |
| Dallas                   | 3,873                  | 55.0%                   |
| DeSoto                   | 149                    | 2.1%                    |
| Duncanville              | 112                    | 1.6%                    |
| Farmers Branch           | 94                     | 1.3%                    |
| Garland                  | 583                    | 8.3%                    |
| Glenn Heights            | 18                     | 0.3%                    |
| Grand Prairie            | 314                    | 4.5%                    |
| Highland Park            | 18                     | 0.3%                    |
| Hutchins                 | 38                     | 0.5%                    |
| Irving                   | 739                    | 10.5%                   |
| Lancaster                | 119                    | 1.7%                    |
| Mesquite                 | 346                    | 4.9%                    |
| Richardson               | 125                    | 1.8%                    |
| Rowlett                  | 70                     | 1.0%                    |
| Sachse                   | 14                     | 0.2%                    |
| Seagoville               | 35                     | 0.5%                    |
| Sunnyvale                | 9                      | 0.1%                    |
| University Park          | 26                     | 0.4%                    |
| Wilmer                   | 15                     | 0.2%                    |
| Wylie                    | 1                      | 0.0%                    |

**CDC Priorities for COVID-19 Testing (rev. date: 5/3/20)****(See CDC Guidance for Evaluating and Reporting Persons Under Investigation (PUI) at:**<https://www.cdc.gov/coronavirus/2019-nCoV/hcp/clinical-criteria.html> )**High Priority**

- Hospitalized patients **with** symptoms
- Healthcare facility workers, workers in congregate living settings, and first responders **with** symptoms
- Residents in long-term care facilities or other congregate living settings, including prisons and shelters, **with** symptoms

**Priority**

- Persons **with** symptoms of potential COVID-19 infection, including: fever, cough, shortness of breath, chills, muscle pain, new loss of taste or smell, vomiting or diarrhea and/or sore throat.
- Persons **without** symptoms who are prioritized by health departments or clinicians, for any reason, including but not limited to: public health monitoring, sentinel surveillance, or screening of other asymptomatic individuals according to state and local plans.

***Many Thanks to:***

Our area hospitals and healthcare providers for reporting lab-confirmed COVID-19 cases

Our DCHHS Case and Contact Investigations Team volunteers from:

Dallas County Medical Society

UT Southwestern Medical School

Texas A&M College of Medicine

UTHealth School of Public Health

Retired School Nurses

New COVID-19 cases are reported as a daily aggregate, with this cumulative summary updated Tuesdays and Fridays.

DCHHS COVID-19 Summaries and Case Report Form are accessible at:

<https://www.dallascounty.org/departments/dchhs/2019-novel-coronavirus.php>

**DCHHS Acute Communicable Disease Epidemiology Division:** COVID-19@dallascounty.org