

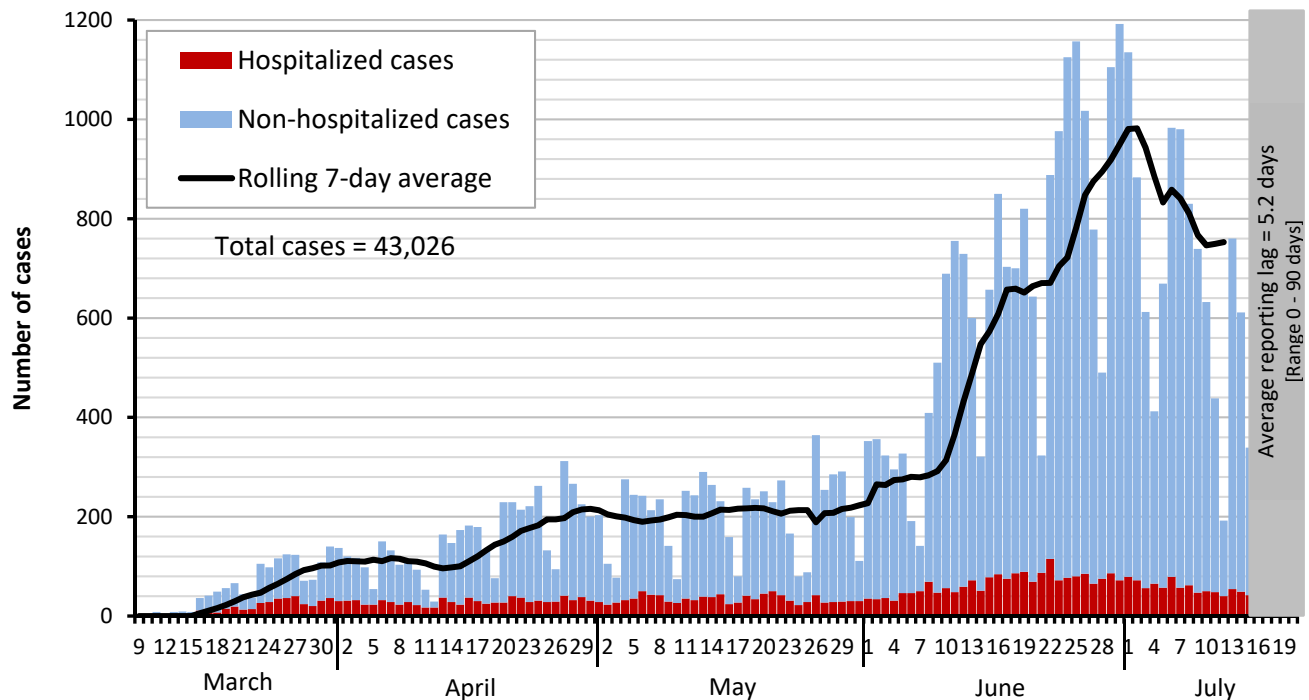


Dallas County Health and Human Services 2019 Novel Coronavirus (COVID-19) Summary

July 21, 2020

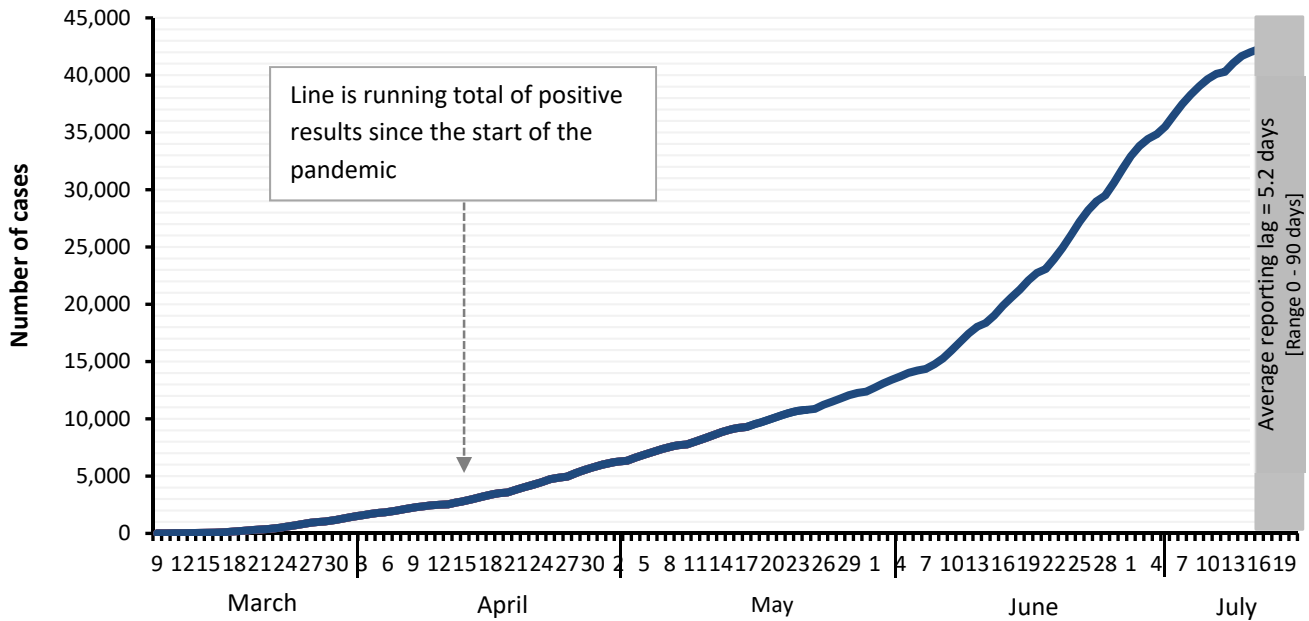
- As of July 21, 2020, DCHHS is reporting 734 additional cases of 2019 novel coronavirus (COVID-19), bringing the total case count in Dallas County to 43,026, including 537 deaths.
- Over 1,200 children under 18 years of age have been diagnosed with confirmed COVID-19 during the first three weeks of July, including 29 children who have been hospitalized for COVID-19.
- There have been 98 confirmed COVID-19 cases in children and staff reported from 65 separate daycares in Dallas County since June 1st, including 3 staff members requiring hospitalization.
- The percentage of respiratory specimens testing positive for SARS-CoV-2 remains high, with 26.8% of symptomatic patients presenting to area hospitals testing positive in week 28.
- Of the 5,217 cases requiring hospitalization to date, almost three-quarters (72%) have been under 65 years of age, and over half reported having a chronic health condition. Diabetes has been an underlying high-risk health condition reported in about a third of all hospitalized patients with COVID-19.
- Of cases requiring hospitalization who reported employment, over 80% have been critical infrastructure workers, with a broad range of affected occupational sectors, including: healthcare, transportation, food and agriculture, public works, finance, communications, clergy, first responders and other essential functions.
- Thirty percent (30%) of deaths have been associated with long-term care facilities.

Figure 1. Daily COVID-19 cases by date of test collection, Dallas County: March 10 – July 21, 2020¹⁻⁴



1. Data received as of 8:00 pm yesterday, for residents of Dallas County tested with known specimen collection dates. This does include delayed results from previous days. All data are preliminary and subject to change as cases continue to be investigated.
2. Data are incomplete for the most recent dates. Test results may be reported to DCHHS several days after the result. The reporting lag is calculated as time from specimen collection to receipt of test results. The average reporting lag is 5.2 days, with a range from 0 – 90 days.
3. The validity of results based on antibody tests is not yet known. This summary report includes only confirmed cases based on PCR test results.
4. Bars are the number of positive PCR tests which were collected that day.
5. Rolling 7-day average is the average number of new confirmed COVID-19 cases collected 7 days prior to value.

Figure 2. Cumulative COVID-19 cases by date of test collection, Dallas County: March 10 – July 21, 2020¹⁻²



1. Data received as of 8:00 pm yesterday, for residents of Dallas County tested with known specimen collection dates. This does include delayed results from previous days. All data are preliminary and subject to change as cases continue to be investigated.
2. Data are incomplete for the most recent dates. Test results may be reported to DCHHS several days after the result. The reporting lag is calculated as time from specimen collection to receipt of test results. The average reporting lag is 5.2 days, with a range from 0 – 90 days.

Table 1. Source of laboratory testing for confirmed cases of COVID-19, Dallas County

Source of Laboratory Testing for Reported Positive PCR Tests	# Tests (N=43,026)	% of Total Cases
Commercial or Hospital Laboratory*	41,304	96%
Dallas LRN Laboratory	1,466	3%
Other Public Health Laboratory	256	1%

* Includes: AIT, ARUP, CPL, Excelsior, LabCorp, Magnolia, Medfusion, Prism, Quest, Viracor, and multiple hospital laboratories

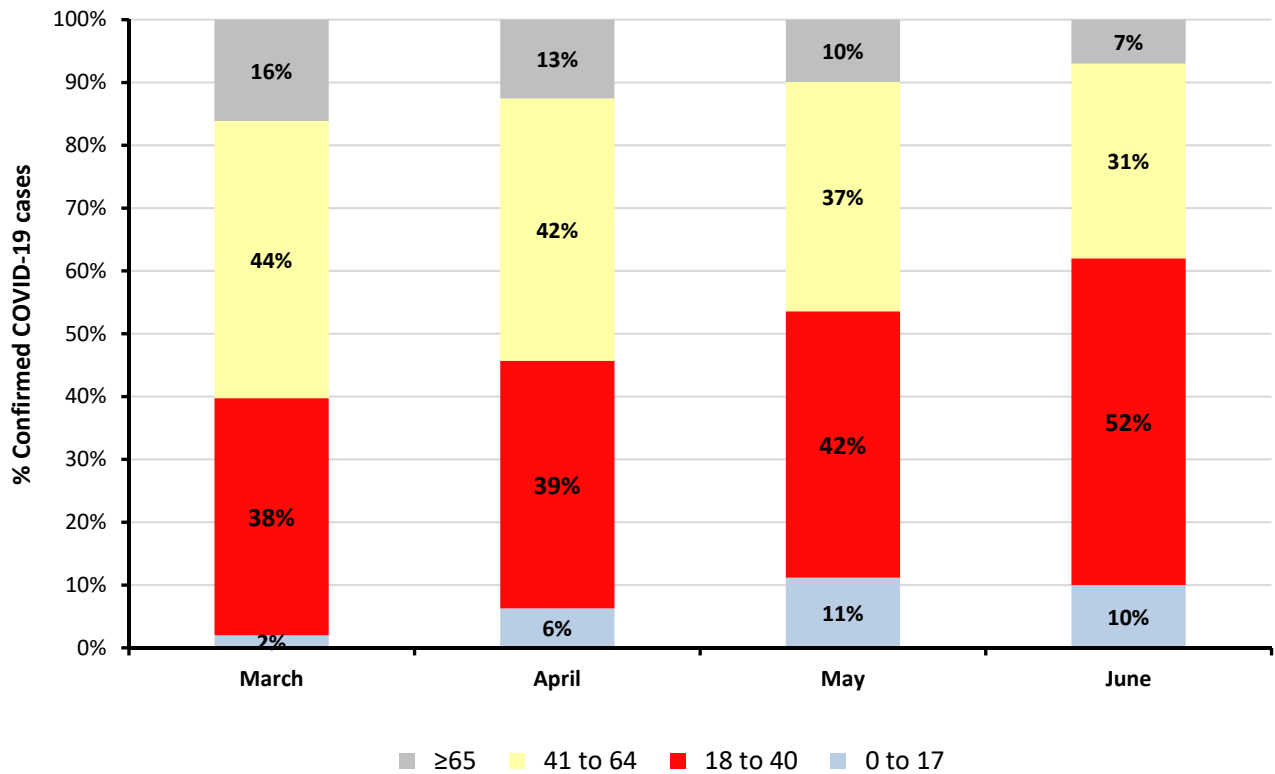
Table 2. Characteristics of cumulative confirmed COVID-19 cases, Dallas County: March 9 – July 21, 2020

	Number	% of Total Cases*
Total Cases in Dallas County residents	N = 43,026	100%
Age Group (years)	0 to 17	4,225 (10%)
	18 to 40	19,996 (47%)
	41 to 64	14,778 (34%)
	≥65	3,862 (9%)
Sex	Female	21,063 (50%)
	Male	21,268 (50%)
Not Hospitalized (Includes: Outpatient, urgent care, drive-through, ED)	37,809	88%
Ever Hospitalized	5,217	12%

* Percentages calculated among cases with known age/sex

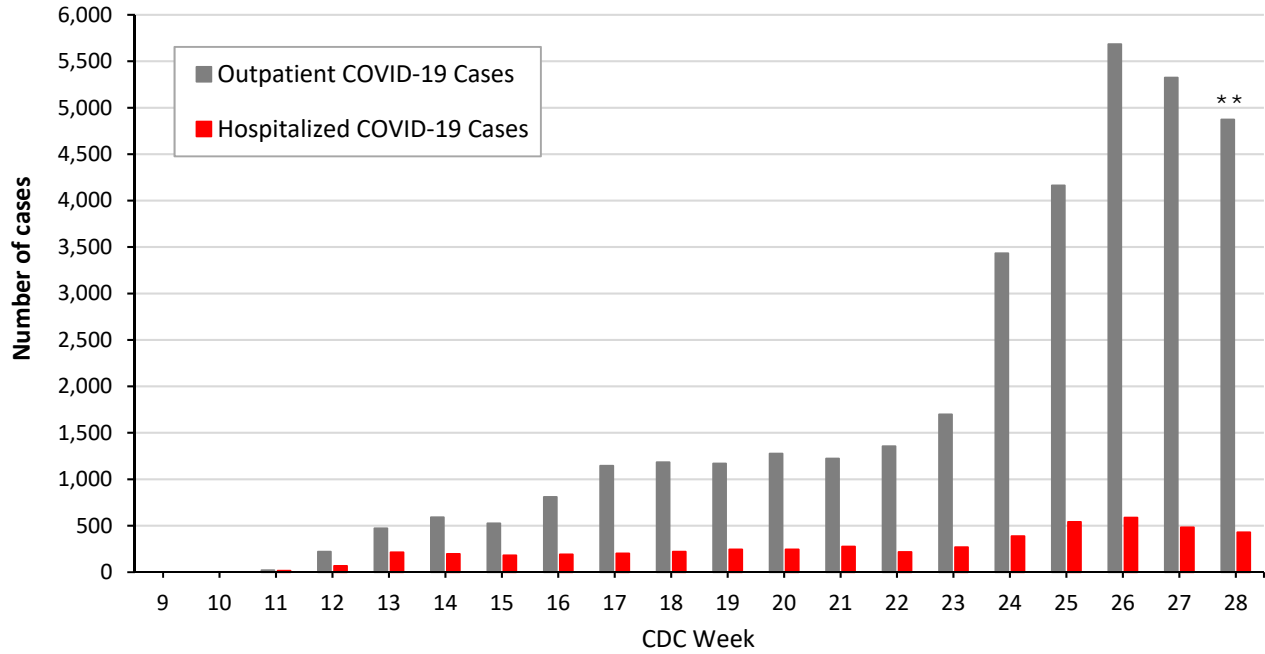
Figure 3. Number of confirmed COVID-19 cases by age group and month of collection, Dallas County

Age Group (in years)	0 to 17		18 to 40		41 to 64		≥65	
Month of Diagnosis	N	%	N	%	N	%	N	%
March	26	2%	493	38%	576	44%	211	16%
April	285	6%	1,791	39%	1,897	42%	570	13%
May	682	11%	2,590	42%	2,230	37%	607	10%
June	1,534	10%	7,945	52%	4,702	31%	1,174	7%
July (through 7/21)	1,227	11%	4,736	44%	3,821	36%	991	9%



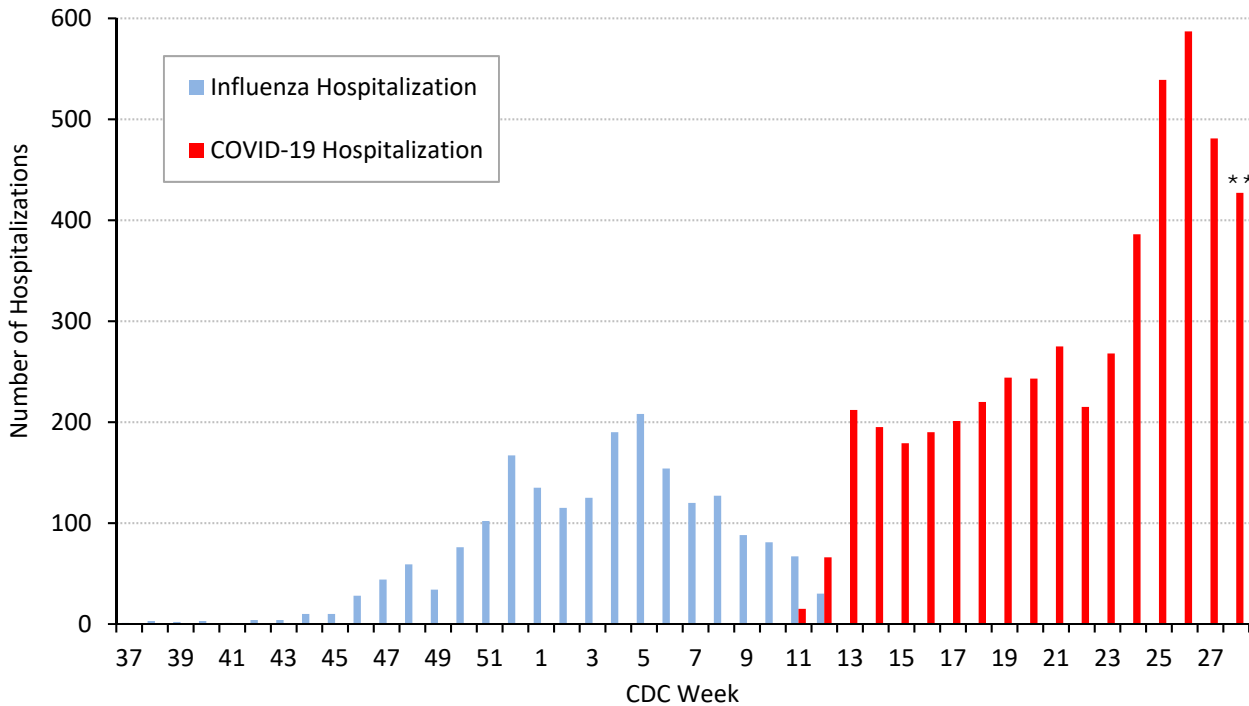
1. Data received as of 8:00 pm yesterday, for residents of Dallas County tested with known specimen collection dates. This does include delayed results from previous days. All data are preliminary and subject to change as cases continue to be investigated.
2. Data are incomplete for the most recent dates. Test results may be reported to DCHHS several days after the result. The reporting lag is calculated as time from specimen collection to receipt of test results. The average reporting lag is 5.2 days, with a range from 0 – 90 days.

Figure 4. Non-hospitalized and hospitalized COVID-19 Cases by week of test collection, Dallas County: September 2019 through week ending July 11, 2020 (CDC Week 28)*



* Non-hospitalized includes all patients not admitted to acute-care hospitals (e.g. outpatient, urgent care, drive-through, ED-only, LTCF) and diagnosed with confirmed COVID-19 by PCR testing. All data are preliminary and subject to change as cases continue to be received and investigated.
 ** Data are incomplete for the most recent dates. Test results may be reported to DCHHS several days after the result. The reporting lag is calculated as time from specimen collection to receipt of test results.

Figure 5. Influenza and COVID-19 hospitalizations by week of admission, Dallas County: September 2019 through week ending July 11, 2020 (CDC Week 28)*



* Hospitalized Dallas County residents diagnosed with confirmed COVID-19 by PCR testing. All data are preliminary and subject to change as cases continue to be received and investigated.
 ** Data are incomplete for the most recent dates. Test results may be reported to DCHHS several days after the result. The reporting lag is calculated as time from specimen collection to receipt of test results.

Table 3. Characteristics of cumulative hospitalized confirmed COVID-19 cases, Dallas County: March 10 – July 21, 2020

		Hospitalized Cases	%
<i>Ever Hospitalized</i>		N = 5,217	12% of Total Cases
Admitted to Intensive Care Unit		1,109	21%
Mechanical Ventilation		607	12%
Sex	Male	2,713	52%
	Female	2,504	48%
Age Group (years)	0-17	116	2%
	18-40	1,280	25%
	41-64	2,396	46%
	≥65	1,425	27%
Presence of ≥1 high risk condition		2,917	56%
Diabetes		1,550	30%
Lung Disease (e.g. COPD, asthma)		544	10%
Heart Disease (e.g. CHF)		661	13%
Kidney Disease (e.g. ESRD, dialysis)		517	10%
Cancer, Immune-compromise		368	7%
Obesity		794	15%
Race/ Ethnicity	White	748	14%*
	Hispanic	2,837	54%*
	Black	1,038	20%*
	Other	187	4%*
	Non-reported/ Unknown	407	8%

* Percentages can also be calculated to exclude cases for which race/ethnicity was not reported

Table 4. Characteristics of cumulative confirmed COVID-19 deaths, Dallas County: March 10 – July 21, 2020

<i>Death classified as confirmed if decedent was a Dallas County resident with a positive COVID-19 PCR test. Data are obtained from ME office, hospitals, and vital statistics.</i>		Confirmed Deaths	% ¹
		N = 537	1.2% of Total Cases
Sex	Male	347	65%
	Female	190	35%
Age Group (years)	17-40	29	5%
	41-64	150	28%
	≥65	358	67%
Resident of a Long-Term Care Facility		159	30%
Presence of ≥1 high risk condition		378	74%
Diabetes		240	47%
Race/ Ethnicity	White	143	27% (29% of population) ²
	Hispanic	237	44% (41% of population) ²
	Black	129	24% (24% of population) ²
	Asian	21	4% (7% of population) ²

¹ Percentages calculated among those with known underlying health conditions or race/ethnicity as reported by medical provider

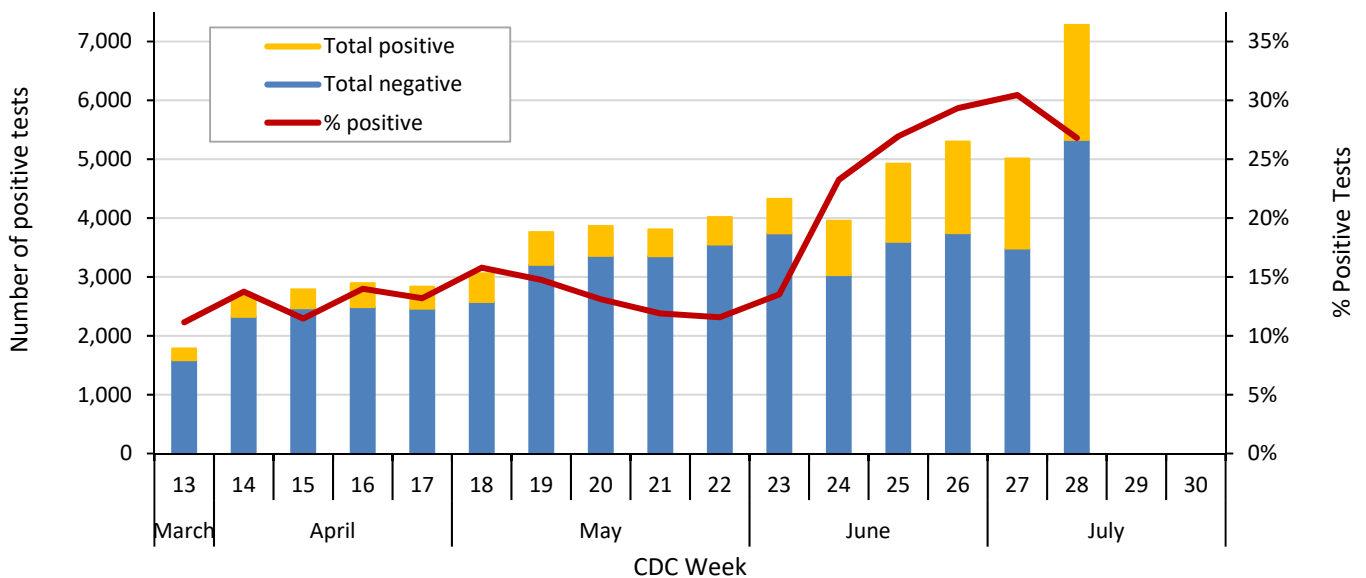
² 2019 U.S. Census population estimates for Dallas County

Table 5. Respiratory virus testing by North Texas hospitals participating in public health surveillance programs: April 26 – July 11, 2020 (CDC Weeks 18-28)¹⁻²

Week Ending		5/2	5/9	5/16	5/23	5/30	6/6	6/13	6/20	6/27	7/4	7/11
SARS-CoV-2 Novel Coronavirus	Positive	483	555	507	453	465	585	919	1,327	1,555	1,526	1,952
	Total Tests	3,060	3,762	3,865	3,807	4,017	4,328	3,953	4,925	5,300	5,011	7,282
	% Positive	15.8%	14.8%	13.1%	11.9%	11.6%	13.5%	23.2%	26.9%	29.3%	30.5%	26.8%
Influenza	Positive	0	0	0	0	0	0	0	0	0	0	0
	Total Tests	325	337	315	277	233	235	206	121	238	225	174
	% Positive	0%	0%	0%	0%	0%	0%	0%	0%	0%	0%	0%
Seasonal (non-SARS-2) Coronavirus	Positive	0	0	0	0	1	0	0	0	0	0	1
	Total Tests	119	133	135	113	76	97	94	20	26	126	44
	% Positive	0%	0%	0%	0%	1.3%	0%	0%	0%	0%	0%	2.3%
Adenovirus (respiratory)	Positive	3	2	5	3	1	2	3	0	1	0	2
	Total Tests	246	281	252	255	198	217	183	100	194	200	145
	% Positive	1.2%	0.7%	2.0%	1.2%	0.5%	0.9%	1.6%	0%	0.5%	0%	1.4%
Metapneumo- virus	Positive	1	2	0	0	0	0	0	0	0	0	0
	Total Tests	246	281	252	255	198	217	183	100	194	200	145
	% Positive	0.4%	0.7%	0%	0%	0%	0%	0%	0%	0%	0%	0%
Rhinovirus/ Enterovirus	Positive	10	7	3	5	5	6	6	2	4	12	5
	Total Tests	246	281	252	255	198	217	184	100	194	200	145
	% Positive	4.1%	2.5%	1.2%	2.0%	2.5%	2.8%	3.3%	2.0%	2.1%	6.0%	3.4%
RSV	Positive	1	2	0	0	0	0	0	0	0	0	0
	Total Tests	250	282	258	262	200	218	187	104	197	200	145
	% Positive	0.4%	0.7%	0%	0%	0%	0%	0%	0%	0%	0%	0%

Data sources: National Respiratory and Enteric Virus Surveillance System and an additional subset of hospitals voluntarily reporting surveillance data directly to DCHHS. Testing denominators include out-of-county patients and testing performed only through hospitals in Dallas County. (Does not include FEMA drive-thru clinics). Data are incomplete for the most recent dates.

Figure 7. SARS-CoV-2 novel coronavirus positive tests reported to DCHHS by hospital laboratories: March 22 – July 11, 2020 (CDC Weeks 13-28)¹⁻²



1. Data received as of 8:00 pm yesterday. All data are preliminary and subject to change as cases continue to be received and investigated.
 2. Data are incomplete for the most recent dates. Test results may be reported to DCHHS several days after the result.

Table 6. Transmission risk factors for cumulative confirmed COVID-19 cases, Dallas County

<i>Exposure Risk Factor</i>	Cases (N= 43,026)	% of Total Cases
International Travel	80	0.2%
Domestic Travel (Out-of-state)	198	0.5%
Cruise Ship Travel	13	0.0%
Long-Term Care Facility (Resident) ¹	955	2.4%
County Jail (Inmate)	596	1.5%
State Jail (Inmate-- TDCJ COVID-19 Medical Action Center) ²	84	0.2%
Federal Prison (Inmate) ³	1,154	2.7%
Homeless Shelter	73	0.2%
Meat/Food Processing Facilities	481	1.2%
Close contact or Presumed Community Transmission ⁴	39,401	91.6%

¹ Does not include over 290 COVID-19 cases reported in LTCF staff members employed by the > 104 affected LTCFs.

² Texas Department of Criminal Justice cases are under the jurisdiction of the Texas Department of State Health Services for investigation

³ Federal prison cases are under the jurisdiction of the federal government for investigation, but are now included in total County cases

⁴ Includes: household transmission and cases with no other exposure risk factors identified

Table 7. Summary of weekly COVID-19 hospitalizations and deaths from Dallas County hospitals, Vital Statistics and Medical Examiner’s office¹⁻⁴

Week Ending	05/16	05/23	05/30	06/06	06/13	06/20	06/27	07/04	07/11	07/18	9/08/19– Present
CDC Week	20	21	22	23	24	25	26*	27*	28*	29*	
COVID-19 hospitalizations ¹	243	275	215	268	386	539	587*	481*	427*	262*	5,217
COVID-19 ICU admissions ¹	57	63	47	57	67	86	83*	82*	79*	40*	1,109
Probable COVID-19-associated deaths ²	0	0	0	0	0	0	0	0	0	0	0
Confirmed COVID-19-associated deaths ³	48	28	30	28	25	35	49*	46*	38*	44*	537

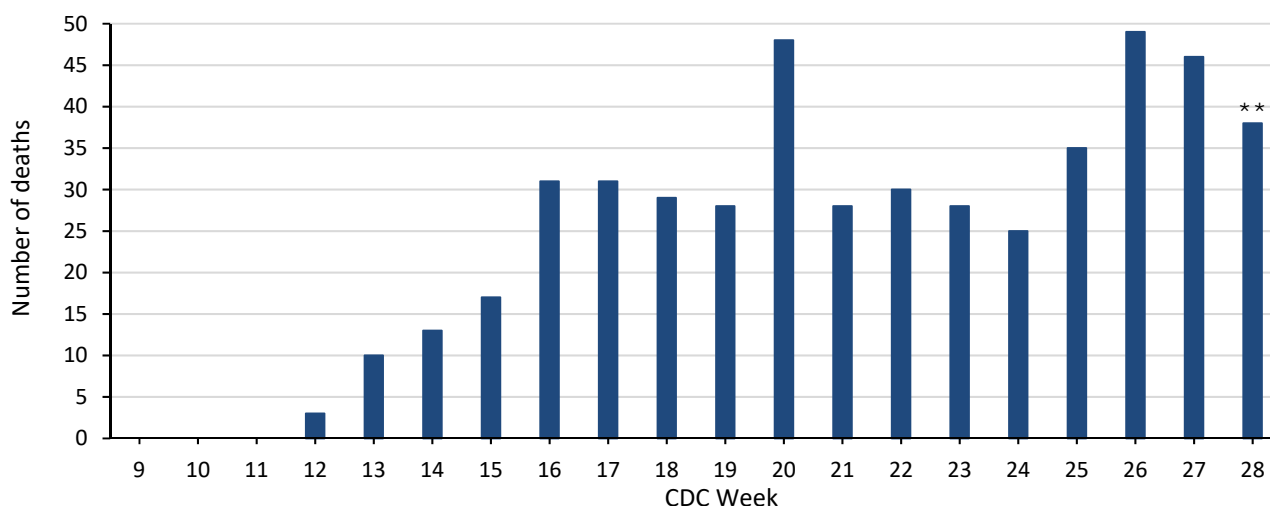
* All data are preliminary and subject to change as cases continue to be received and investigated.

¹ Reflects all COVID-19-associated hospitalizations and intensive care unit admissions reported from area hospitals within Dallas County by week of admission. Hospitalizations are inclusive of ICU admissions. Data are preliminary and include reports received as of 8:00 pm yesterday.

² Probable COVID-19 deaths as defined by CSTE interim case classification criteria--meeting vital records criteria without PCR laboratory confirmation.

³ Confirmed COVID-19 deaths as defined by a positive PCR test *and* any of the following: (1) death certificate denotation, (2) medical record documentation of compatible symptoms and clear progression from illness to death, or (3) determination by the County Medical Examiner’s office (ME) of no alternate cause of death. Does not include possible COVID-19 -associated deaths with pending determination of cause of death.

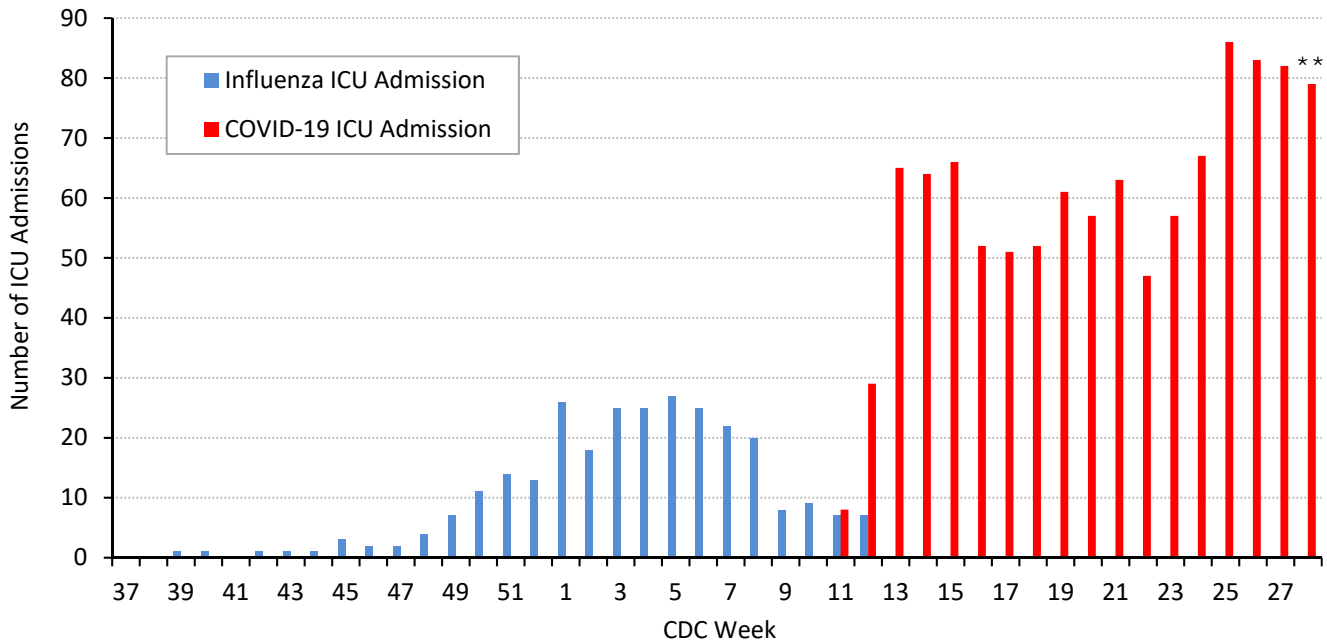
Figure 8. Confirmed COVID-19-associated deaths by week of death, Dallas County: March 2020 through week ending July 11, 2020 (CDC Week 28)*



* Dallas County residents diagnosed with confirmed COVID-19 by PCR testing.

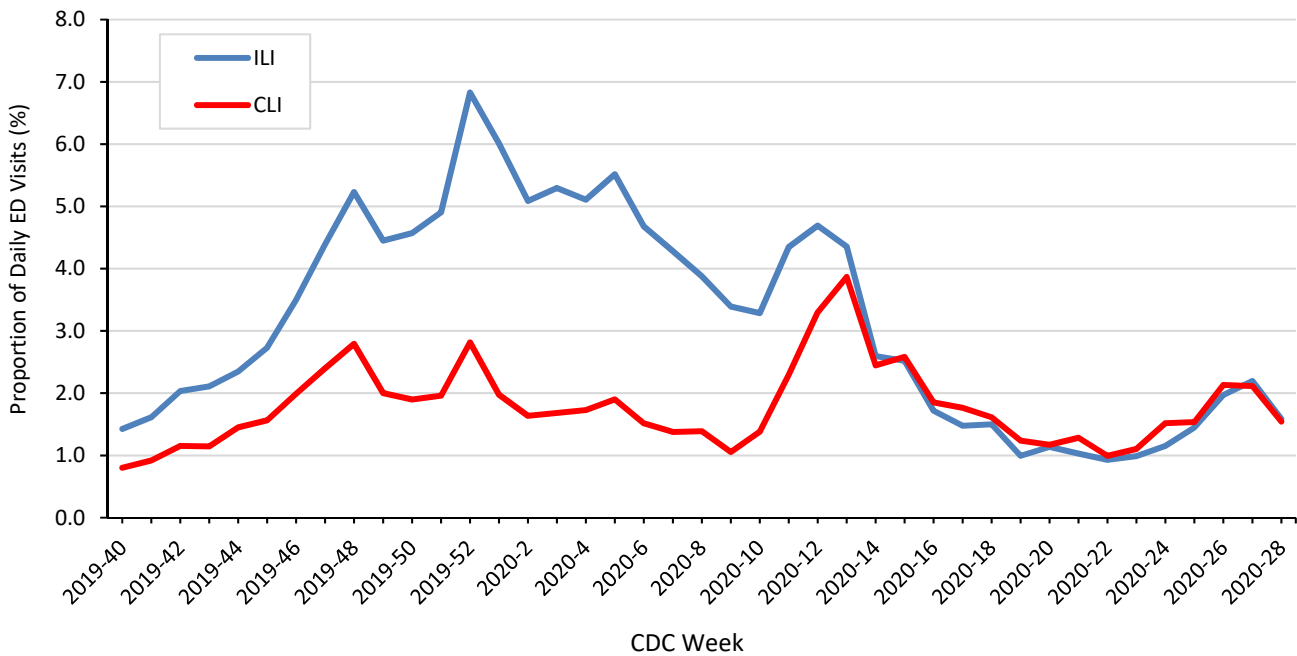
** All data are preliminary and subject to change as cases continue to be received and investigated.

Figure 9. Intensive care unit hospitalizations for influenza and COVID-19 by week of admission, Dallas County: September 2019 through week ending July 11, 2020 (CDC Week 28)*



* New ICU admissions of Dallas County residents reported with confirmed COVID-19 by PCR testing as of 8:00 pm yesterday. Hospitalized patients with self-reported residence from outside of Dallas County are not included.
 ** All data are preliminary and subject to change as cases continue to be received and investigated.

Figure 10. Syndromic surveillance of emergency department visits for COVID-like illness (CLI)* and Influenza-like illness (ILI), Dallas County: September 29, 2019 – July 11, 2020**



ESSENCE Data is from 18 hospital emergency departments voluntarily reporting numbers of persons presenting with self-reported chief complaints.
 * CLI is defined as chief complaint of fever and cough or shortness of breath or difficulty breathing.
 **ILI is defined as chief complaint of fever and cough or sore throat or mention of influenza.

Table 8. Occupations of hospitalized patients with confirmed COVID-19, Dallas County, 3/10 – 7/20/20

Occupation	Hospitalized Cases (%) of Total Employed	
	Position	Sector
Critical Infrastructure Workers*		1177 (80%)
Healthcare and Public Health		172 (12%)
	<i>Nurse, LVN, CNA</i>	25
	<i>Physician</i>	4
	<i>Other: Dentist, dietary, home health, medical assistant, mental health, PCT</i>	143
Transportation and Logistics		148 (10%)
	<i>Airline/Airport</i>	13
	<i>Parcel or postal delivery</i>	14
	<i>Cab/rideshare or bus driver</i>	21
	<i>Other: Mechanic, truck driver, freight, railroad</i>	100
Food and Agriculture		247 (17%)
	<i>Grocery</i>	45
	<i>Restaurant</i>	99
	<i>Other: Food processing, production, supply</i>	103
Other Community/Government Essential Functions		74 (5%)
	<i>Clergy (Pastor, priest)</i>	9
	<i>Education (Teacher, administration)</i>	27
	<i>Judicial system (Attorney)</i>	14
	<i>Other: Real estate services, shelter services, government operations</i>	24
Public Works and Infrastructure Support Services		185 (13%)
	<i>Construction/Contractor</i>	129
	<i>Other: Waste disposal, landscaping, maintenance</i>	56
Financial (<i>Accounting, bank, insurance</i>)		54 (4%)
Communications and Information Technology		22 (1%)
Commercial Facilities (<i>Building materials, painting, warehouse</i>)		119 (8%)
Hygiene Services (<i>Custodian, housekeeping</i>)		62 (4%)
Law Enforcement, Public Safety, First Responders		39 (3%)
Critical Manufacturing (<i>Manufacturing metal, packaging</i>)		40 (3%)
Energy/Utilities (<i>Electricity, petroleum, gas</i>)		15 (1%)
Non-Critical Infrastructure Workers (Includes retail, personal services)		186 (13%)
Employed (position not reported)		104 (7%)
Total reporting any employment		1467
Non-Employed (Includes retired, child, homemaker, etc.)		1539
Student (≥18 years old)		40
Not reported		2,171
Total hospitalized		5,217

* Includes only residents of Dallas County with self-reported occupational information. All data is preliminary and subject to change.

**CISA Advisory Memorandum on Identification of Essential Critical Infrastructure Workers During COVID-19 Response, v3.1, May 19, 2020
https://www.cisa.gov/sites/default/files/publications/Version_3.1_CISA_Guidance_on_Essential_Critical_Infrastructure_Workers.pdf.

Table 9. Cumulative COVID-19 cases by city of residence within Dallas County as of July 21, 2020*(e.g. Does not include cases who reside in portions of cities which are not within Dallas County.)*

City of Residence	Cases (N=43,026)	% of Total Cases
Addison	157	0.4%
Balch Springs	461	1.1%
Carrollton	683	1.6%
Cedar Hill	705	1.6%
Cockrell Hill	105	0.2%
Combine	11	0.0%
Coppell	207	0.5%
Dallas	23,055	53.6%
DeSoto	856	2.0%
Duncanville	718	1.7%
Farmers Branch	400	0.9%
Ferris	2	0.0%
Garland	3,774	8.8%
Glenn Heights	94	0.2%
Grand Prairie	1,936	4.5%
Highland Park	39	0.1%
Hutchins	185	0.4%
Irving	3,549	8.2%
Lancaster	685	1.6%
Mesquite	2,461	5.7%
Ovilla	1	0.0%
Richardson	641	1.5%
Rowlett	477	1.1%
Sachse	92	0.2%
Seagoville	1,456	3.4%
Sunnyvale	73	0.2%
University Park	72	0.2%
Wilmer	128	0.3%
Wylie	3	0.0%

CDC Priorities for COVID-19 Testing (rev. date: 5/3/20)

(See CDC Guidance for Evaluating and Reporting Persons Under Investigation (PUI) at:

<https://www.cdc.gov/coronavirus/2019-nCoV/hcp/clinical-criteria.html>)**High Priority**

- Hospitalized patients **with** symptoms
- Healthcare facility workers, workers in congregate living settings, and first responders **with** symptoms
- Residents in long-term care facilities or other congregate living settings, including prisons and shelters, **with** symptoms

Priority

- Persons **with** symptoms of potential COVID-19 infection, including: fever, cough, shortness of breath, chills, muscle pain, new loss of taste or smell, vomiting or diarrhea and/or sore throat.
- Persons **without** symptoms who are prioritized by health departments or clinicians, for any reason, including but not limited to: public health monitoring, sentinel surveillance, or screening of other asymptomatic individuals according to state and local plans.

Many Thanks to:

Our area hospitals and healthcare providers for reporting lab-confirmed COVID-19 cases

Our DCHHS Case and Contact Investigations Team volunteers from:

Dallas County Medical Society

UT Southwestern Medical School

Texas A&M College of Medicine

UTHealth School of Public Health

Retired School Nurses

New COVID-19 cases are reported as a daily aggregate, with this cumulative summary updated Tuesdays and Fridays.

DCHHS COVID-19 Summaries and Case Report Form are accessible at:

<https://www.dallascounty.org/departments/dchhs/2019-novel-coronavirus.php>

DCHHS Acute Communicable Disease Epidemiology Division: COVID-19@dallascounty.org