

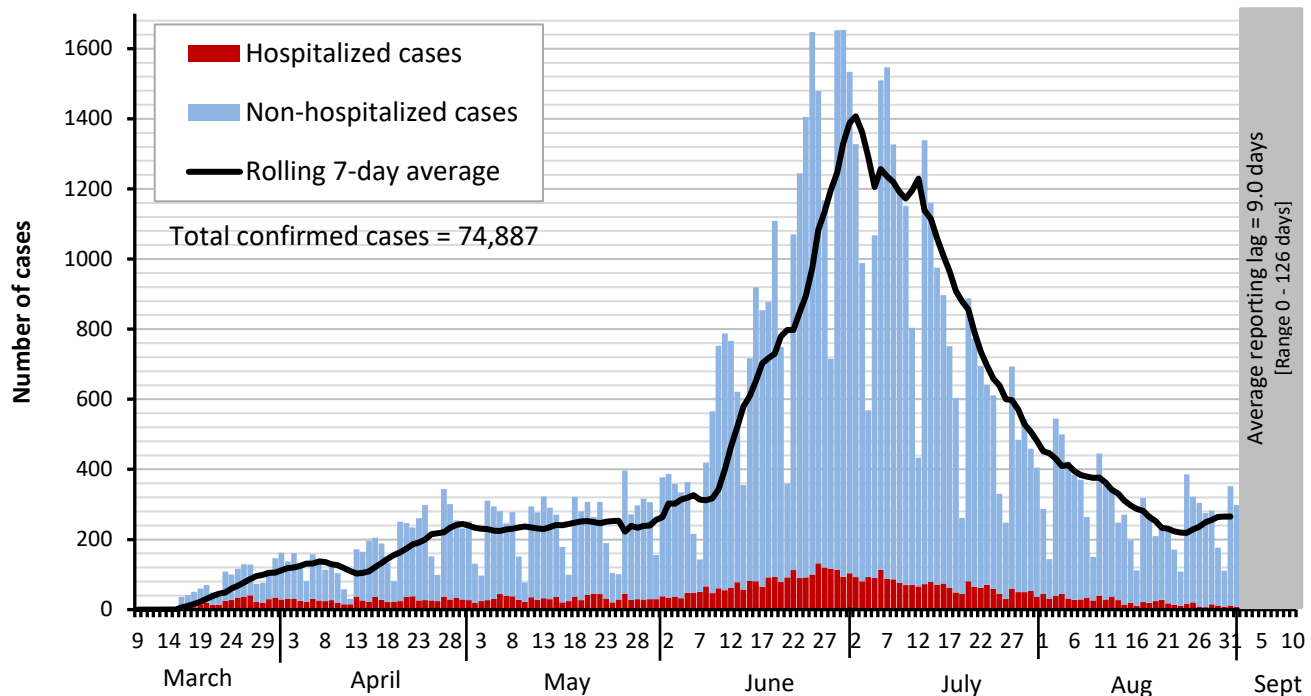


# Dallas County Health and Human Services 2019 Novel Coronavirus (COVID-19) Summary

September 11, 2020

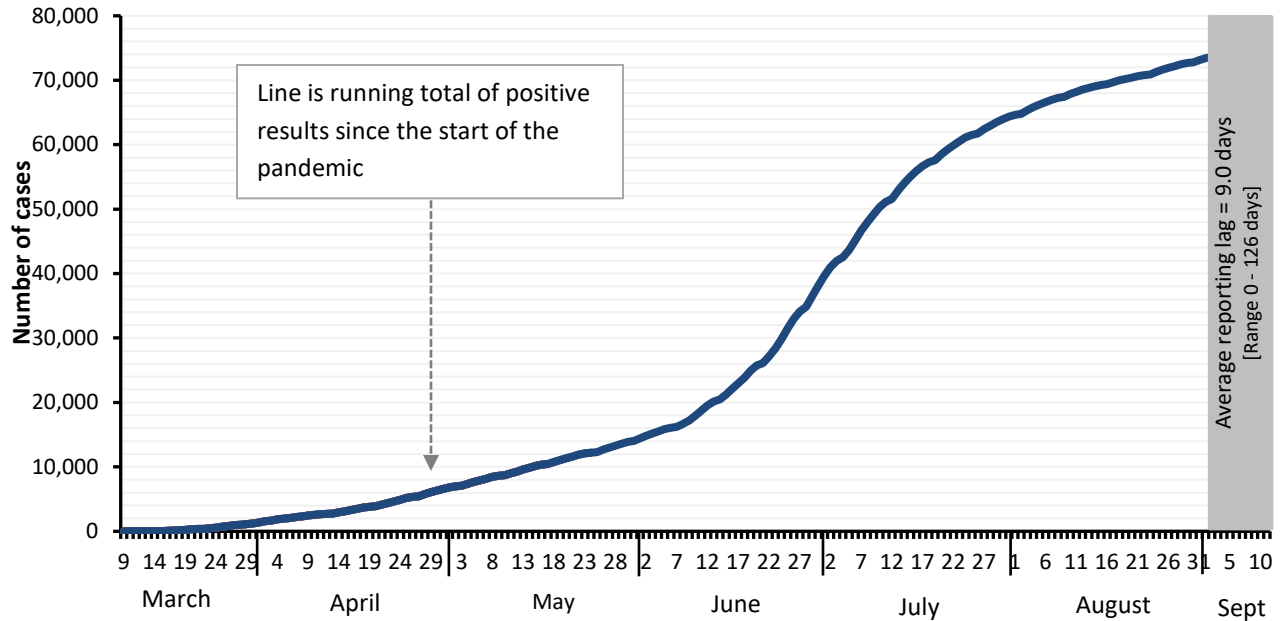
- As of September 11, 2020, DCHHS is reporting 259 additional confirmed cases of 2019 novel coronavirus (COVID-19), bringing the total number of confirmed cases in Dallas County to 74,887, including 965 confirmed deaths. The total number of probable cases in Dallas County is 3,404, including 10 probable COVID-19 associated deaths.
- The provisional 7-day average daily new confirmed and probable cases (by date of test collection) for CDC week 36 was 243. The percentage of respiratory specimens testing positive for SARS-CoV-2 remains high, with 10.8% of symptomatic patients presenting to area hospitals testing positive in week 36.
- A provisional total of 104 confirmed and probable COVID-19 cases were diagnosed in school-aged children (5 to 17 years) during CDC week 36 (week ending 9/5/2020), a decline from the previous week for this age group.
- Of the 7,389 cases requiring hospitalization to date, almost three-quarters (70%) have been under 65 years of age, and over half reported having a chronic health condition. Diabetes has been an underlying high-risk health condition reported in about a third of all hospitalized patients with COVID-19.
- Of cases requiring hospitalization who reported employment, almost 80% have been critical infrastructure workers, with a broad range of affected occupational sectors, including: healthcare, transportation, food and agriculture, public works, finance, communications, clergy, first responders and other essential functions.
- Twenty-five percent (25%) of deaths have been associated with long-term care facilities.

Figure 1. Confirmed COVID-19 positive cases by date of test collection, Dallas County: March 10 – September 11, 2020



1. Data received as of 8:00 pm yesterday, for residents of Dallas County tested with known specimen collection dates. This does include delayed results from previous days. All data are preliminary and subject to change as cases continue to be investigated.
2. Data are incomplete for the most recent dates. Test results may be reported to DCHHS several days after the result. The reporting lag is calculated as time from specimen collection to receipt of test results. The average reporting lag is 9.0 days, with a range from 0 – 126 days.
3. This summary graph includes only confirmed cases based on molecular amplification detection test results.
4. Bars are the number of positive molecular amplification detection tests which were collected that day.
5. Rolling 7-day average is the average number of new confirmed COVID-19 cases collected 7 days prior to value.

**Figure 2. Cumulative confirmed COVID-19 cases by date of test collection, Dallas County: March 10 – September 11, 2020<sup>1-2</sup>**



1. Data received as of 8:00 pm yesterday, for residents of Dallas County tested with known specimen collection dates. This does include delayed results from previous days. All data are preliminary and subject to change as cases continue to be investigated.
2. Data are incomplete for the most recent dates. Test results may be reported to DCHHS several days after the result. The reporting lag is calculated as time from specimen collection to receipt of test results. The average reporting lag is 9.0 days, with a range from 0 – 126 days.

**Table 1. Source of laboratory testing for confirmed cases of COVID-19, Dallas County**

Source of Laboratory Testing for Reported Positive Molecular Amplification Detection Tests	# Tests (N=74,887)	% of Total Cases
Commercial or Hospital Laboratory*	72,998	97%
Dallas LRN Laboratory	1,617	2%
Other Public Health Laboratory	272	<1%

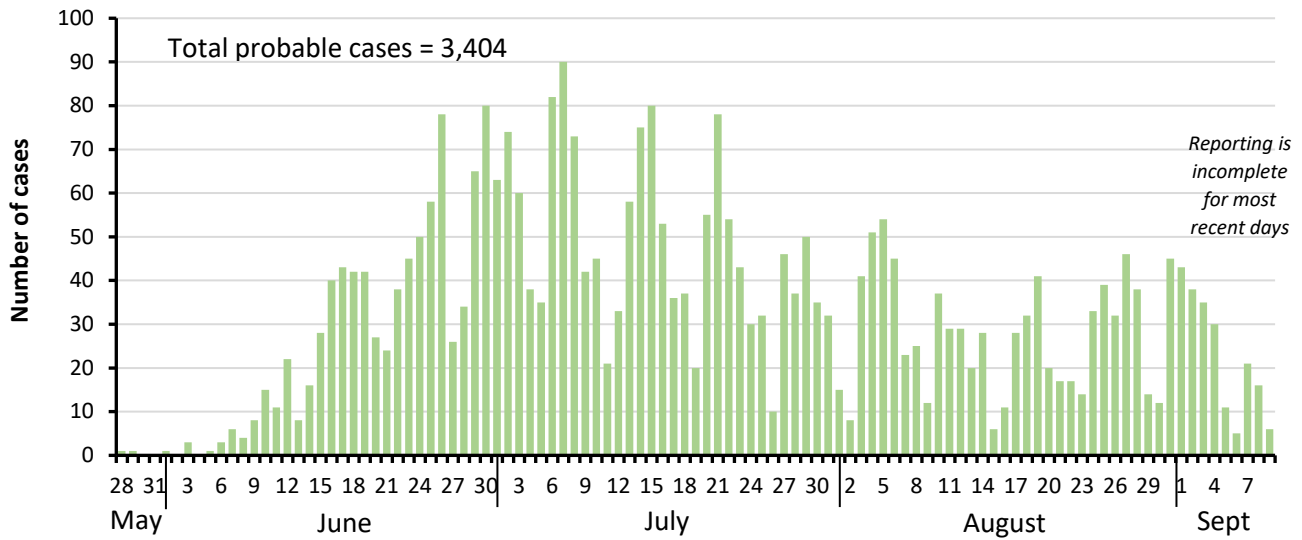
\* Includes: AIT, ARUP, CPL, Excelsior, LabCorp, Magnolia, Medfusion, Prism, Quest, Viracor, and multiple hospital laboratories

**Table 2. Characteristics of cumulative confirmed COVID-19 cases, Dallas County: March 9 – September 11, 2020**

	Number	% of Total Cases*
Total Cases in Dallas County residents	N = 74,887	100%
Age Group (years)	0 to 17	11%
	18 to 40	46%
	41 to 64	34%
	≥65	9%
Sex	Female	51%
	Male	49%
Not Hospitalized (Includes: Outpatient, urgent care, drive-through, ED)	67,498	90%
Ever Hospitalized	7,389	10%

\* Percentages calculated among cases with known age/sex

Figure 3. Probable COVID-19 cases by date of test collection, Dallas County: May 28 – September 11, 2020<sup>1-5</sup>



1. Data received as of 8:00 pm yesterday, for residents of Dallas County tested with known specimen collection dates. This does include delayed results from previous days. All data are preliminary and subject to change as cases continue to be investigated.
2. Data are incomplete for the most recent dates. Test results may be reported to DCHHS several days after the result. The reporting lag is calculated as time from specimen collection to receipt of test results.
3. This summary graph includes only probable cases which meet below CDC case definition. Probable cases are reported separately from confirmed cases.

Table 3. Characteristics of cumulative probable COVID-19 cases, Dallas County: May 28 – September 11, 2020

		Number	% of Total Cases*
Total Probable Cases in Dallas County residents		N = 3,404	100%
Age Group (years)	0 to 17	812	24%
	18 to 40	1,682	49%
	41 to 64	745	22%
	≥65	160	5%
Sex	Female	1,724	51%
	Male	1,671	49%

\* Percentages calculated among cases with known age/sex

**CDC Definition of a COVID-19 case:**

"A COVID-19 case includes [confirmed and probable cases and deaths](#). This change was made to reflect an interim [COVID-19 position](#) statement issued by the Council of State and Territorial Epidemiologists on April 5, 2020. The position statement included a case definition and made COVID-19 a [nationally notifiable disease](#)."

**CDC Definition of a COVID-19 probable case:**

"A [probable case or death](#) is defined as:

- A person meeting [clinical criteria](#) **AND** [epidemiologic evidence](#) with no confirmatory laboratory testing performed for COVID-19;
- A person meeting [presumptive laboratory evidence](#) **AND** either [clinical criteria](#) **OR** [epidemiologic evidence](#);
- A person meeting [vital records criteria](#) with no confirmatory laboratory testing performed for COVID-19."

\*Centers for Disease Control and Prevention FAQ: COVID-19 Data and Surveillance:

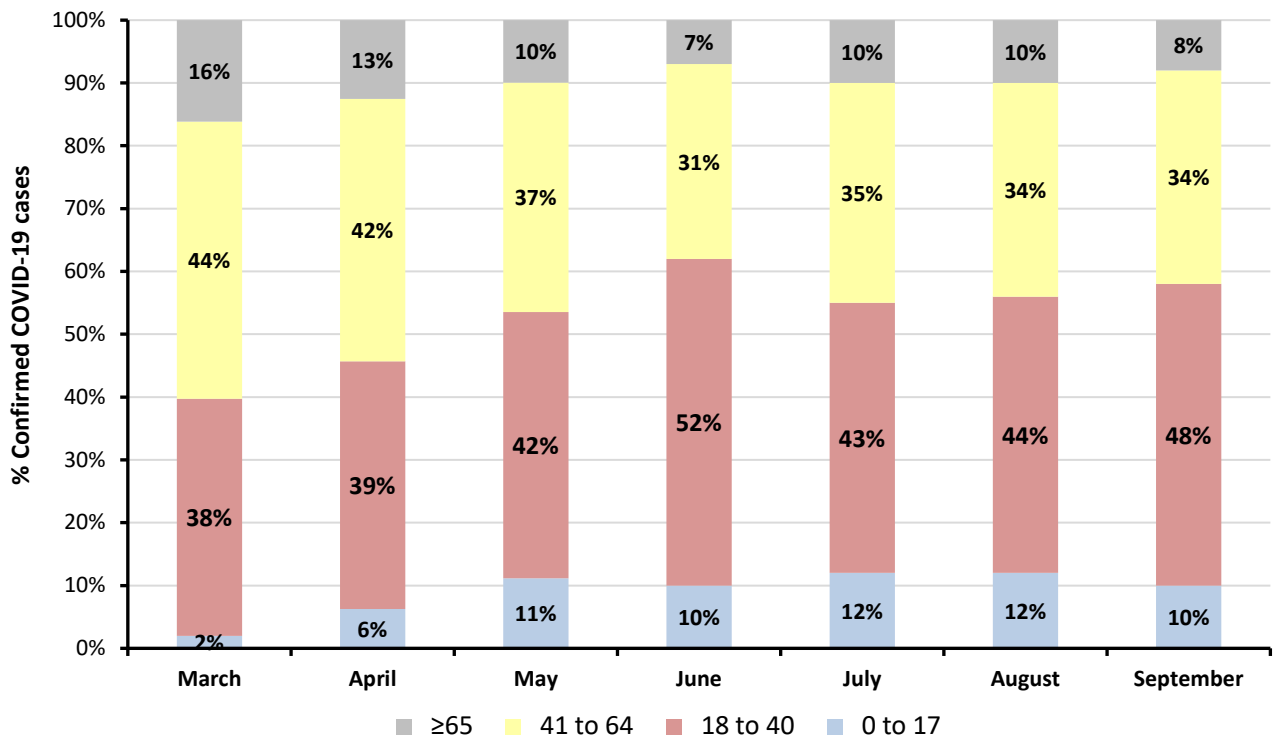
<https://www.cdc.gov/coronavirus/2019-ncov/covid-data/faq-surveillance.html>

\*\*See also Texas Department of State Health Services (DSHS) Case Definition:

<https://www.dshs.state.tx.us/coronavirus/docs/DSHS-COVID19CaseDefinitionandInvestigationPrioritizationGuidance.pdf>

Figure 4. Number of confirmed COVID-19 cases by age group and month of collection, Dallas County

Age Group (in years)	0 to 17		18 to 40		41 to 64		≥65	
	N	%	N	%	N	%	N	%
March	26	2%	493	38%	576	44%	211	16%
April	285	6%	1,791	39%	1,897	42%	570	13%
May	682	11%	2,590	42%	2,230	37%	607	10%
June	1,534	10%	7,945	52%	4,702	31%	1,174	7%
July	2,337	12%	8,079	43%	6,678	35%	1,845	10%
August	1,028	12%	3,775	44%	2,896	34%	903	10%
September (thru 9/11)	121	10%	609	48%	435	34%	108	8%

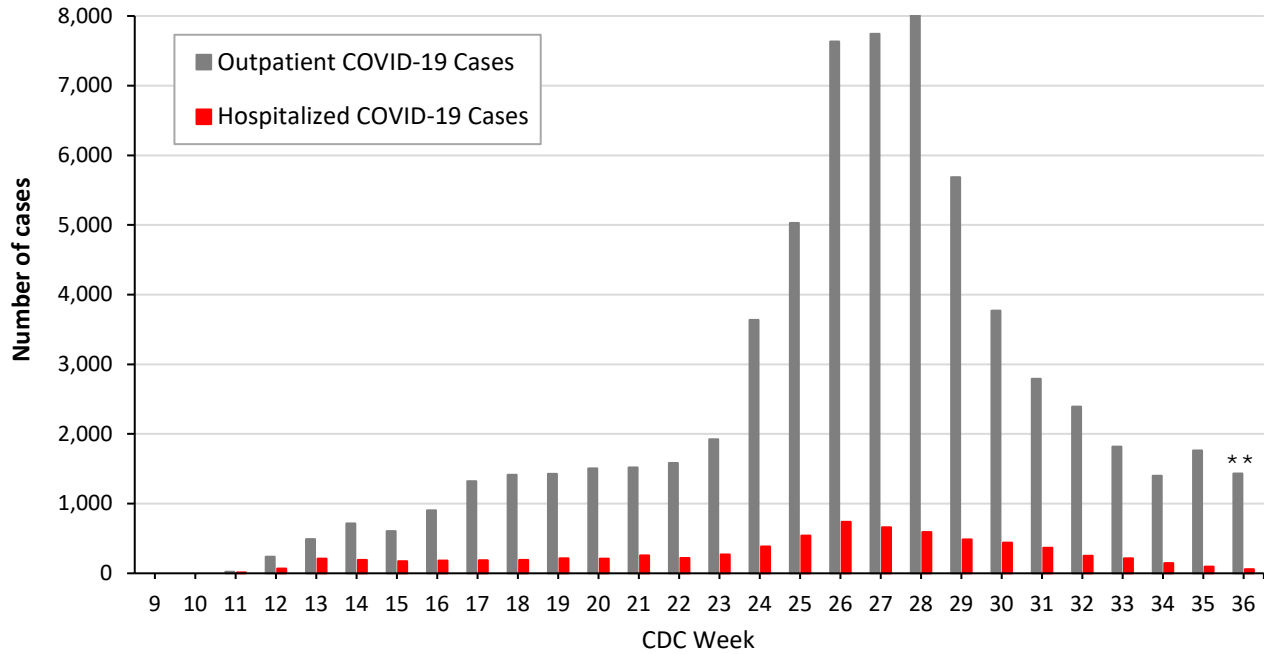


1. Data received as of 8:00 pm yesterday, for residents of Dallas County tested with known specimen collection dates. This does include delayed results from previous days. All data are preliminary and subject to change as cases continue to be investigated.
2. Data are incomplete for the most recent dates. Test results may be reported to DCHHS several days after the result. The reporting lag is calculated as time from specimen collection to receipt of test results. The average reporting lag 9.0 days, with a range from 0 – 126 days.

*If all public schools in Dallas County had been open for full on-campus only instruction during the week of August 24<sup>th</sup>:*

- From August 15<sup>th</sup> through 28<sup>th</sup>, 317 school-aged children between 5 – 17 years of age were diagnosed with COVID-19 in Dallas County. If in-person school had begun on Monday, August 17<sup>th</sup>, these 317 children would have been absent from school for at least some portion of that week (from August 24<sup>th</sup> – August 28<sup>th</sup>).
- The 129 children who were diagnosed between August 24<sup>th</sup> – 28<sup>th</sup> were residents in 56 different zip codes in Dallas County. Their attendance on-campus would have prompted classroom closures for cleaning and identification of classmate/teacher contacts for 14-day quarantine.
- About 43% (136) of these cases were high-school age, and almost a third (108) were elementary-school age (5-10 years).
- Of these pediatric COVID-19 cases: 167 (53%) were projected (by zip code of residence) to be students enrolling in Dallas ISD schools; 27 (9%) in Irving ISD; 24 (8%) in Garland ISD; 31 (10%) in Mesquite ISD; 10 (3%) in Grand Prairie ISD; 8 (3%) in Carrollton-Farmers Branch ISD; 5 (2%) in Richardson ISD; 5 (2%) in DeSoto ISD; 4 (1%) in Lancaster ISD; 1 (0.3%) in Duncanville ISD; 6 (2%) in Cedar Hill ISD; 4 (1%) in Coppell ISD; 1 (0.3%) in Highland Park ISD; 1 (0.3%) in Sunnyvale ISD.

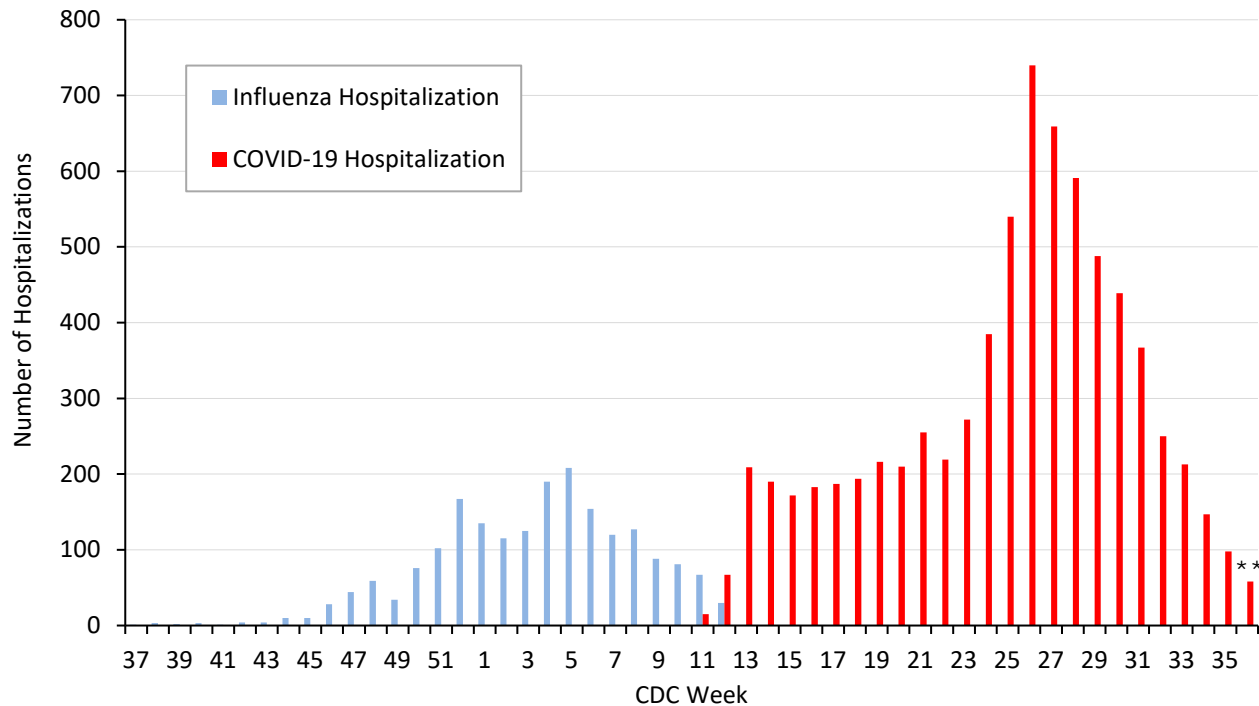
**Figure 5. Non-hospitalized and hospitalized confirmed COVID-19 cases by week of test collection, Dallas County: September 2019 through week ending September 5, 2020 (CDC Week 36)\***



\* Non-hospitalized includes all patients not admitted to acute-care hospitals (e.g. outpatient, urgent care, drive-through, ED-only, LTCF) and diagnosed with confirmed COVID-19. All data are preliminary and subject to change as cases continue to be received and investigated.

\*\* Data are incomplete for the most recent dates. Test results may be reported to DCHHS several days after the result. The reporting lag is calculated as time from specimen collection to receipt of molecular amplification detection test results.

**Figure 6. Influenza and confirmed COVID-19 hospitalizations by week of admission, Dallas County: September 2019 through week ending September 5, 2020 (CDC Week 36)\***



\* Hospitalized Dallas County residents diagnosed with confirmed COVID-19 by molecular amplification detection testing. All data are preliminary and subject to change as cases continue to be received and investigated.

\*\* Data are incomplete for the most recent dates. Test results may be reported to DCHHS several days after the result. The reporting lag is calculated as time from specimen collection to receipt of test results.

**Table 4. Characteristics of cumulative hospitalized confirmed COVID-19 cases, Dallas County: March 10 – September 11, 2020**

		Hospitalized Cases	%
<i>Ever Hospitalized</i>		N = 7,389	10% of Total Cases
Admitted to Intensive Care Unit		1,759	24%
Mechanical Ventilation		938	13%
Sex	Male	3,871	52%
	Female	3,518	48%
Age Group (years)	0-17	178	2%
	18-40	1,698	23%
	41-64	3,267	45%
	≥65	2,246	30%
Presence of ≥1 high risk condition		4,273	58%
Diabetes		2,295	31%
Lung Disease (e.g. COPD, asthma)		780	11%
Heart Disease (e.g. CHF)		1,013	14%
Kidney Disease (e.g. ESRD, dialysis)		799	11%
Cancer, Immune-compromise		524	7%
Obesity		1,295	18%
Race/ Ethnicity	White	1,175	16%*
	Hispanic	3,910	53%*
	Black	1,567	21%*
	Other	261	4%*
	Non-reported/ Unknown	476	6%

\* Percentages can also be calculated to exclude cases for which race/ethnicity was not reported

**Table 5. Characteristics of cumulative confirmed COVID-19 deaths, Dallas County: March 10 – September 11, 2020**

<i>Death classified as confirmed if decedent was a Dallas County resident with a positive molecular test. Data are obtained from ME office, hospitals, and vital statistics.</i>		Confirmed Deaths	% <sup>1</sup>
		N = 965	1.3% of Total Cases
Sex	Male	610	63%
	Female	355	37%
Age Group (years)	0-17	2	<1%
	18-40	43	5%
	41-64	309	32%
	≥65	611	63%
Resident of a Long-Term Care Facility		240	25%
Presence of ≥1 high risk condition		709	78%
Diabetes		434	47%
Race/ Ethnicity	White	254	<b>26%</b> (29% of population) <sup>2</sup>
	Hispanic	440	<b>46%</b> (41% of population) <sup>2</sup>
	Black	231	<b>24%</b> (24% of population) <sup>2</sup>
	Asian	27	<b>3%</b> (7% of population) <sup>2</sup>

<sup>1</sup> Percentages calculated among those with known underlying health conditions or race/ethnicity as reported by medical provider

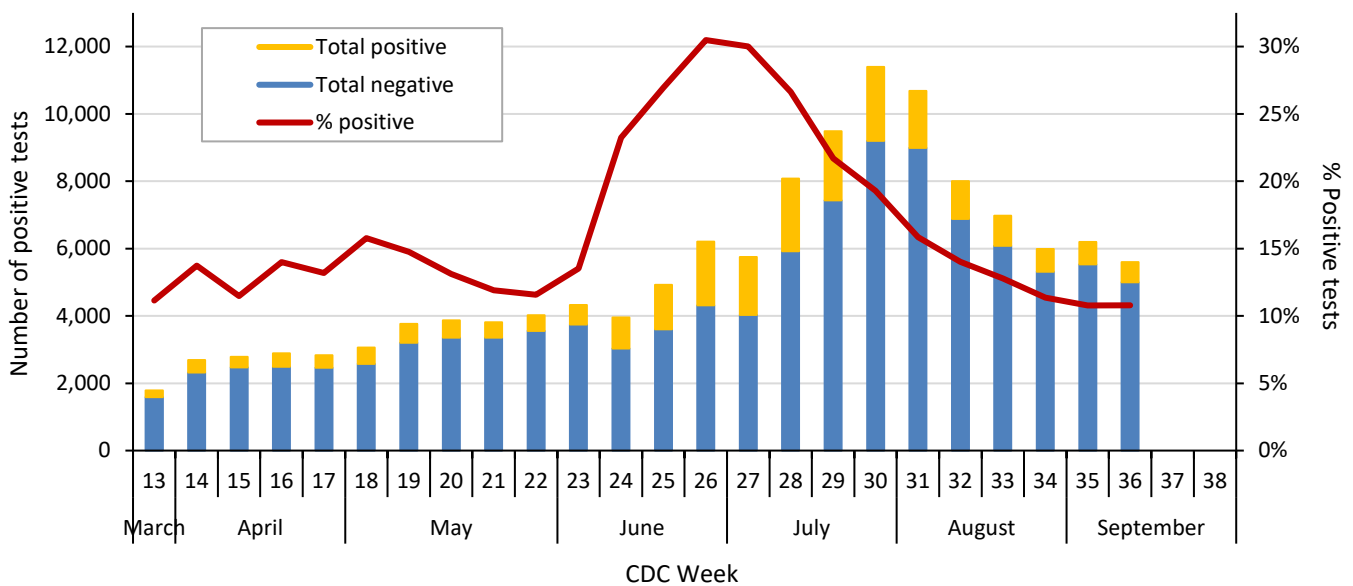
<sup>2</sup> 2019 U.S. Census population estimates for Dallas County

**Table 6. Respiratory virus testing by North Texas hospitals participating in public health surveillance programs: June 27 – September 5, 2020 (CDC Weeks 26-36)<sup>1-2</sup>**

Week Ending		7/4	7/11	7/18	7/25	8/1	8/8	8/15	8/22	8/29	9/5
SARS-CoV-2	Positive	1,727	2,152	2,058	2,197	1,694	1,122	891	680	668	604
	Total Tests	5,753	8,077	9,488	11,393	10,682	8,005	6,976	5,992	6,199	5,602
Novel Coronavirus	% Positive	30.5%	26.8%	21.7%	19.3%	15.9%	14.0%	12.8%	11.3%	10.8%	10.8%
Influenza	Positive	0	0	0	0	0	0	0	0	0	0
	Total Tests	225	174	111	115	124	106	61	52	136	191
	% Positive	0%	0%	0%	0%	0%	0%	0%	0%	0%	0%
Seasonal (non-SARS-2) Coronavirus	Positive	0	1	0	0	0	0	0	0	0	0
	Total Tests	126	44	28	24	37	25	18	23	45	54
	% Positive	0%	2.3%	0%	0%	0%	0%	0%	0%	0%	0%
Adenovirus (respiratory)	Positive	0	2	1	0	2	0	0	0	1	1
	Total Tests	200	145	101	108	105	88	60	52	128	170
	% Positive	0%	1.4%	1.0%	0%	1.9%	0%	0%	0%	0.8%	0.6%
Metapneumovirus	Positive	0	0	0	0	0	0	0	0	0	0
	Total Tests	200	145	101	108	105	80	60	52	128	170
	% Positive	0%	0%	0%	0%	0%	0%	0%	0%	0%	0%
Rhinovirus/Enterovirus	Positive	12	5	8	2	9	4	2	3	16	16
	Total Tests	200	145	101	108	105	88	60	52	128	170
	% Positive	6.0%	3.4%	7.9%	1.9%	8.6%	4.5%	3.3%	5.8%	12.5%	9.4%
RSV	Positive	0	0	0	0	0	0	0	0	0	0
	Total Tests	200	145	103	108	107	94	61	52	113	179
	% Positive	0%	0%	0%	0%	0%	0%	0%	0%	0%	0%

Data sources: National Respiratory and Enteric Virus Surveillance System and an additional subset of hospitals voluntarily reporting surveillance PCR data directly to DCHHS. Testing denominators include out-of-county patients and testing performed only through hospitals in Dallas County. (Does not include FEMA drive-thru clinics). Data are incomplete for the most recent dates.

**Figure 7. SARS-CoV-2 positive PCR tests reported to DCHHS by hospital laboratories: March 22 – September 5, 2020 (CDC Weeks 26-36)<sup>1-2</sup>**



1. Data received as of 8:00 pm yesterday. All data are preliminary and subject to change as cases continue to be received and investigated.  
 2. Data are incomplete for the most recent dates. Test results may be reported to DCHHS several days after the result.

**Table 7. Transmission risk factors for cumulative confirmed COVID-19 cases, Dallas County**

<i>Exposure Risk Factor</i>	<b>Cases (N= 74,887)</b>	<b>% of Total Cases</b>
International Travel	113	0.2%
Domestic Travel (Out-of-state)	300	0.4%
Cruise Ship Travel	14	<0.1%
Long-Term Care Facility (Resident) <sup>1</sup>	1,419	1.9%
County Jail (Inmate)	692	0.9%
State Jail (Inmate-- <a href="#">TDCJ COVID-19 Medical Action Center</a> ) <sup>2</sup>	96	0.1%
Federal Prison (Inmate) <sup>3</sup>	1,396	1.9%
Homeless Shelter	90	0.1%
Meat/Food Processing Facilities	591	0.8%
Close contact or Presumed Community Transmission <sup>4</sup>	70,176	93.7%

<sup>1</sup> Does not include over 565 COVID-19 cases reported in LTCF staff members employed by the > 112 affected LTCFs.

<sup>2</sup> Texas Department of Criminal Justice cases are under the jurisdiction of the Texas Department of State Health Services for investigation

<sup>3</sup> Federal prison cases are under the jurisdiction of the federal government for investigation, but are now included in total County cases

<sup>4</sup> Includes: household transmission and cases with no other exposure risk factors identified

**Table 8. Summary of weekly COVID-19 hospitalizations and deaths from Dallas County hospitals, Vital Statistics and Medical Examiner’s office<sup>1-4</sup>**

<b>Week Ending</b>	<b>06/27</b>	<b>07/04</b>	<b>07/11</b>	<b>07/18</b>	<b>07/25</b>	<b>08/01</b>	<b>08/08</b>	<b>08/15</b>	<b>08/22</b>	<b>08/29</b>	<b>09/05</b>	<b>9/08/19– Present</b>
<b>CDC Week</b>	<b>26</b>	<b>27</b>	<b>28</b>	<b>29</b>	<b>30</b>	<b>31</b>	<b>32</b>	<b>33</b>	<b>34</b>	<b>35</b>	<b>36</b>	<b>Present</b>
COVID-19 hospitalizations <sup>1</sup>	740	659	591	488	439	367	250	213	147	98	58	7,389*
COVID-19 ICU admissions <sup>1</sup>	121	136	150	120	89	101	60	51	32	18	4	1,759*
Probable COVID-19-associated deaths <sup>2</sup>	0	0	0	0	2	2	3	3	0	0	0	10*
Confirmed COVID-19-associated deaths <sup>3</sup>	54	56	57	74	98	76	54	52	38	32	15	965*

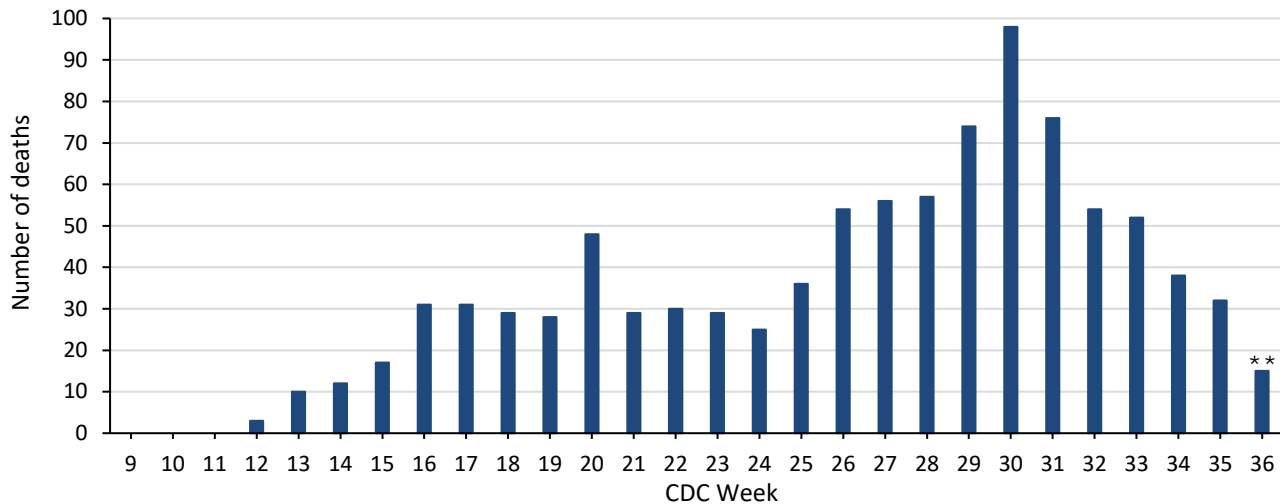
\* All data are preliminary and subject to change as cases continue to be received and investigated.

<sup>1</sup> Reflects all COVID-19-associated hospitalizations and intensive care unit admissions reported from area hospitals within Dallas County by week of admission. Hospitalizations are inclusive of ICU admissions. Data are preliminary and include reports received as of 8:00 pm yesterday.

<sup>2</sup> Probable COVID-19 deaths as defined by CSTE interim case classification criteria--meeting vital records criteria without molecular lab test confirmation.

<sup>3</sup> Confirmed COVID-19 deaths as defined by a positive molecular amplification detection test *and* any of the following: (1) death certificate denotation, (2) medical record documentation of compatible symptoms and clear progression from illness to death, or (3) determination by the County Medical Examiner’s office (ME) of no alternate cause of death. Does not include possible COVID-19 -associated deaths with pending determination of cause of death.

**Figure 8. Confirmed COVID-19-associated deaths by week of death, Dallas County: March 2019 through week ending September 5, 2020 (CDC Week 36)\***

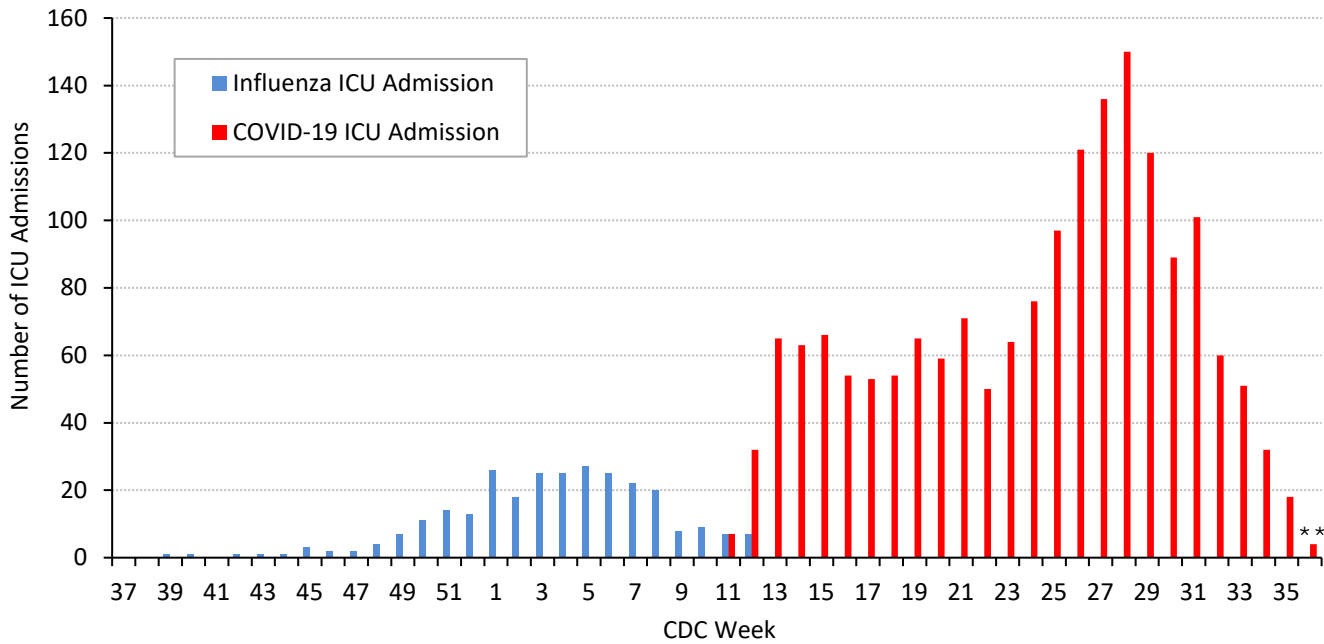


\* Dallas County residents diagnosed with confirmed COVID-19 by molecular amplification detection testing.

\*\* All data are preliminary and subject to change as cases continue to be received and investigated.

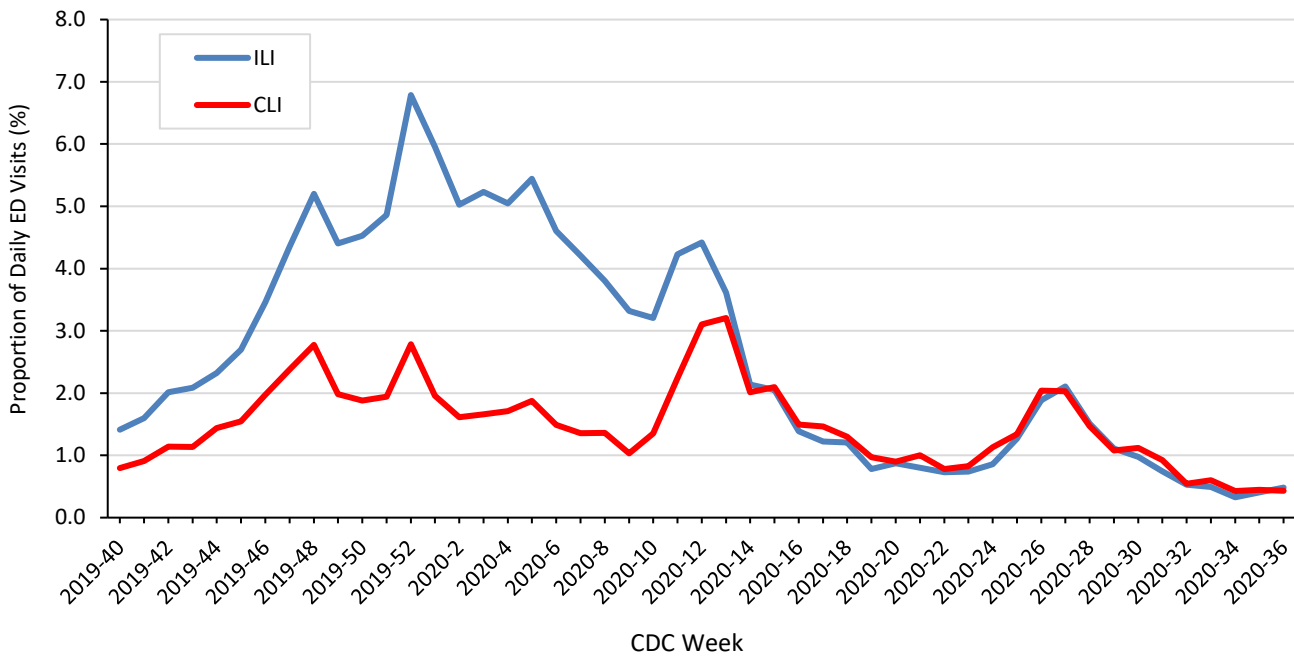


**Figure 9. Intensive care unit hospitalizations for influenza and COVID-19 by week of admission, Dallas County: September 2019 through week ending September 5, 2020 (CDC Week 36)\***



\* New ICU admissions of Dallas County residents reported with confirmed COVID-19 by molecular amplification detection testing as of 8:00 pm yesterday. Hospitalized patients with self-reported residence from outside of Dallas County are not included.  
 \*\* All data are preliminary and subject to change as cases continue to be received and investigated.

**Figure 10. Syndromic surveillance of emergency department visits for COVID-like illness (CLI)\* and Influenza-like illness (ILI)\*\*, Dallas County: September 29, 2019 – September 5, 2020**



ESSENCE Data is from 18 hospital emergency departments voluntarily reporting numbers of persons presenting with self-reported chief complaints.  
 \* CLI is defined as chief complaint of fever and cough or shortness of breath or difficulty breathing.  
 \*\*ILI is defined as chief complaint of fever and cough or sore throat or mention of influenza.

Table 9. Occupations of hospitalized patients with confirmed COVID-19, Dallas County, 3/10 – 8/17/20

Occupation	Hospitalized Cases (%) of Total Employed	
	Position	Sector
<b>Critical Infrastructure Workers*</b>		1,406 (78%)
Healthcare and Public Health		216 (12%)
	<i>Nurse, LVN, CNA</i>	36
	<i>Physician</i>	10
	<i>Other: Dentist, dietary, home health, medical assistant, mental health, PCT</i>	170
Transportation and Logistics		177 (10%)
	<i>Airline/Airport</i>	14
	<i>Parcel or postal delivery</i>	17
	<i>Cab/rideshare or bus driver</i>	21
	<i>Other: Mechanic, truck driver, freight, railroad</i>	125
Food and Agriculture		268 (15%)
	<i>Grocery</i>	52
	<i>Restaurant</i>	81
	<i>Other: Food processing, production, supply</i>	135
Other Community/Government Essential Functions		98 (5%)
	<i>Clergy (Pastor, priest)</i>	11
	<i>Education (Teacher, administration)</i>	30
	<i>Judicial system (Attorney)</i>	11
	<i>Other: Real estate services, shelter services, government operations</i>	46
Public Works and Infrastructure Support Services		231 (13%)
	<i>Construction/Contractor</i>	167
	<i>Other: Waste disposal, landscaping, maintenance</i>	64
Financial ( <i>Accounting, bank, insurance</i> )		68 (4%)
Communications and Information Technology		28 (2%)
Commercial Facilities ( <i>Building materials, painting, warehouse</i> )		133 (7%)
Hygiene Services ( <i>Custodian, housekeeping</i> )		73 (4%)
Law Enforcement, Public Safety, First Responders		48 (3%)
Critical Manufacturing ( <i>Manufacturing metal, packaging</i> )		45 (2%)
Energy/Utilities ( <i>Electricity, petroleum, gas</i> )		21 (1%)
<b>Non-Critical Infrastructure Workers (Includes retail, personal services)</b>		260 (14%)
<b>Employed (position not reported)</b>		139 (8%)
<b>Total reporting any employment</b>		<b>1,805</b>
<b>Non-Employed (Includes retired, child, homemaker, etc.)</b>		2,121
<b>Student (≥18 years old)</b>		66
<b>Not reported</b>		2,986
<b>Total hospitalized</b>		<b>6,978</b>

\* Includes only residents of Dallas County with self-reported occupational information. All data is preliminary and subject to change.

\*\*CISA Advisory Memorandum on Identification of Essential Critical Infrastructure Workers During COVID-19 Response, v3.1, May 19, 2020

[https://www.cisa.gov/sites/default/files/publications/Version\\_3.1\\_CISA\\_Guidance\\_on\\_Essential\\_Critical\\_Infrastructure\\_Workers.pdf](https://www.cisa.gov/sites/default/files/publications/Version_3.1_CISA_Guidance_on_Essential_Critical_Infrastructure_Workers.pdf).

**Table 10. Cumulative COVID-19 cases by city of residence within Dallas County as of September 11, 2020**

*(e.g. Does not include cases who reside in portions of cities which are not within Dallas County.)*

City of Residence	Confirmed Cases (N=74,887)	Probable Cases (N=3,404)	Total Confirmed + Probable Cases reported in 14 day period from 8/16 – 8/29*	Estimated COVID-19 Prevalence (%) in 14 day period from 8/16 – 8/29** (lower – upper estimate range)
Addison	310	15	11	0.20 - 0.68
Balch Springs	810	42	27	0.32 - 1.08
Carrollton	1,273	46	69	0.36 - 1.21
Cedar Hill	1,209	37	59	0.37 - 1.25
Cockrell Hill	166	2	6	0.43 - 1.44
Combine	11	0	0	N/A
Coppell	384	91	41	0.30 - 1.01
Dallas	39,398	1,773	2,008	0.48 - 1.59
DeSoto	1,366	20	76	0.43 - 1.43
Duncanville	1,225	38	53	0.41 - 1.37
Farmers Branch	703	30	32	0.20 - 0.66
Ferris	5	0	0	N/A
Garland	6,815	25	309	0.39 - 1.29
Glenn Heights	169	8	14	0.41 - 1.37
Grand Prairie	3,683	359	178	0.40 - 1.33
Highland Park	77	26	8	0.26 - 0.88
Hutchins	233	2	8	0.41 - 1.36
Irving	6,934	270	355	0.44 - 1.48
Lancaster	1,144	21	44	0.34 - 1.12
Lewisville	1	0	0	N/A
Mesquite	4,178	297	231	0.49 - 1.64
Ovilla	1	0	0	N/A
Richardson	1,221	70	75	0.26 - 0.87
Rowlett	967	11	54	0.27 - 0.91
Sachse	192	2	17	0.29 - 0.95
Seagoville	1,908	23	24	0.43 - 1.43
Sunnyvale	122	19	6	0.26 - 0.88
University Park	171	172	48	0.58 - 1.92
Wilmer	203	2	11	0.69 - 2.31
Wylie	8	2	0	N/A
<b>Dallas County</b>	<b>74,887</b>	<b>3,404</b>	<b>3,764</b>	<b>0.43 - 1.43</b>

\*Sum of confirmed and probable cases by date of test collection, for 14 day timeframe from: August 16– August 29, 2020. Most recent 2 weeks not included due to average reporting lag of 9.0 days. Case numbers are only for portions of each city which are within Dallas County.

\*\*Estimated COVID-19 prevalence rate ranges calculated based on: Fox SJ, Lachmann M, Meyers LA. "COVID-19 Campus Introduction Risks for School Reopenings" presented to the TEA on July 22, 2020. Denominator populations are only for portions of each city which are within Dallas County. [https://sites.cns.utexas.edu/sites/default/files/cid/files/covid-19\\_school\\_introduction\\_risks.pdf?m=1595468503](https://sites.cns.utexas.edu/sites/default/files/cid/files/covid-19_school_introduction_risks.pdf?m=1595468503)

**Table 11. Summary of weekly COVID-19 confirmed and probable cases and deaths, Dallas County (CDC Weeks 32 - 36)**

CDC Week	Week Ending	Total Confirmed and Probable Cases	Total School-Aged Cases (5 to 17 years)	Daily Average New Confirmed and Probable Cases*	Daily Average New Confirmed and Probable Deaths**	Percentage of Tests Positive for SARS-CoV-2***
32	8/8/2020	2,873	287	410	8	14.0%
33	8/15/2020	2,171	149	310	8	12.8%
34	8/22/2020	1,700	160	243	5	11.3%
35	8/29/2020	2,064	162	295	5	10.8%
36	9/5/2020	1,704	104	243	2	10.8%

\* For 7-day time period for respective CDC week by date of test collection

\*\* For 7-day time period for respective CDC week by date of death

\*\*\* See Table 6 for historical data

***Many Thanks to:***

Our area hospitals and healthcare providers for reporting lab-confirmed COVID-19 cases

Our DCHHS Case and Contact Investigations Team volunteers from:

Dallas County Medical Society

UT Southwestern Medical School

Texas A&M College of Medicine

UTHealth School of Public Health

Retired School Nurses

New COVID-19 cases are reported as a daily aggregate, with this cumulative summary updated Tuesdays and Fridays.

DCHHS COVID-19 Summaries and Case Report Form are accessible at:

<https://www.dallascounty.org/departments/dchhs/2019-novel-coronavirus.php>

**DCHHS Acute Communicable Disease Epidemiology Division:** COVID-19@dallascounty.org