

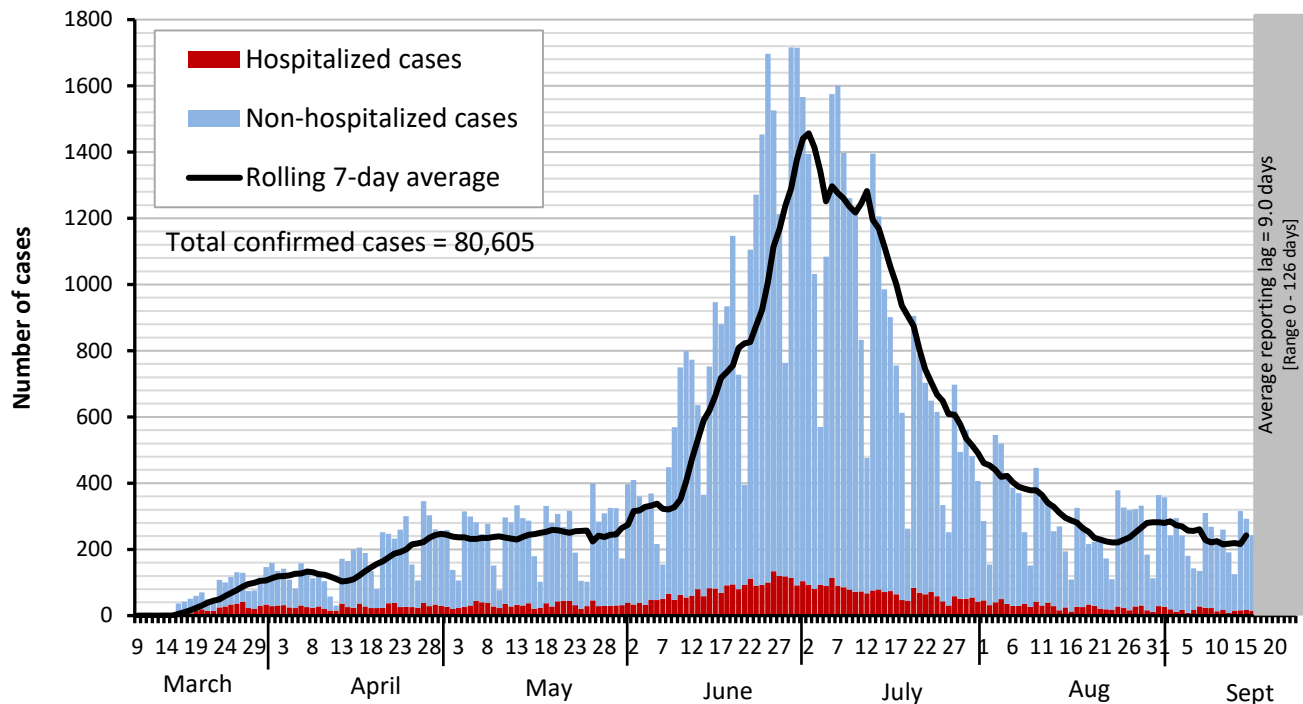


# Dallas County Health and Human Services 2019 Novel Coronavirus (COVID-19) Summary

September 25, 2020

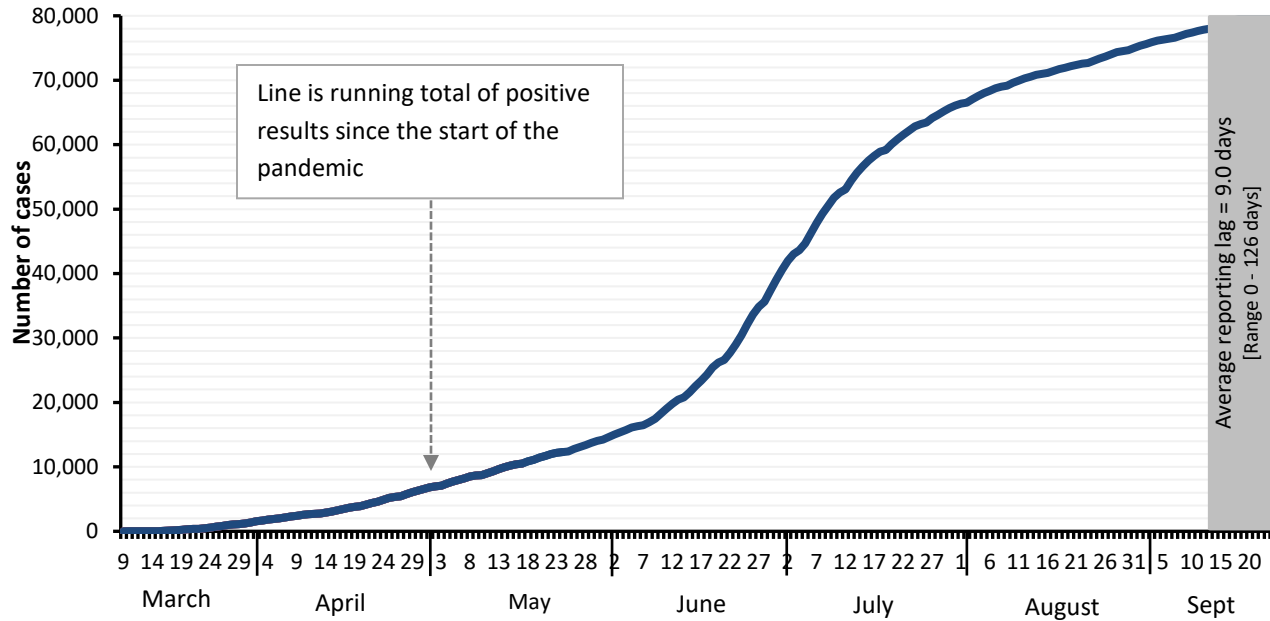
- As of September 25, 2020, DCHHS is reporting 1,179 additional confirmed cases of 2019 novel coronavirus (COVID-19), bringing the total number of confirmed cases in Dallas County to 80,605, including 1,016 confirmed deaths. The total number of probable cases in Dallas County is 3,880, including 11 probable COVID-19 deaths.
- The provisional 7-day average daily new confirmed and probable cases (by date of test collection) for CDC week 38 was 296. The percentage of respiratory specimens testing positive for SARS-CoV-2 remains high, with 11.9% of symptomatic patients presenting to area hospitals testing positive in week 38 (week ending 9/12/2020).
- The percentage of cases occurring in young adults aged 18 to 22 years has increased to 14% in September to date. A provisional total of 225 confirmed and probable COVID-19 cases were diagnosed in school-aged children (5 to 17 years) during CDC week 38, an increase from the previous week for this age group.
- Of the 7,870 cases requiring hospitalization to date, almost three-quarters (70%) have been under 65 years of age, and over half reported having a chronic health condition. Diabetes has been an underlying high-risk health condition reported in about a third of all hospitalized patients with COVID-19.
- Of cases requiring hospitalization who reported employment, almost 80% have been critical infrastructure workers, with a broad range of affected occupational sectors, including: healthcare, transportation, food and agriculture, public works, finance, communications, clergy, first responders and other essential functions.
- Twenty-five percent (25%) of deaths have been associated with long-term care facilities.

Figure 1. Confirmed COVID-19 positive cases by date of test collection, Dallas County: March 10 – September 25, 2020



1. Data received as of 8:00 pm yesterday, for residents of Dallas County tested with known specimen collection dates. This does include delayed results from previous days. All data are preliminary and subject to change as cases continue to be investigated.
2. Data are incomplete for the most recent dates. Test results may be reported to DCHHS several days after the result. The reporting lag is calculated as time from specimen collection to receipt of test results. The average reporting lag is 9.0 days, with a range from 0 – 126 days.
3. This summary graph includes only confirmed cases based on molecular amplification detection test results.
4. Bars are the number of positive molecular amplification detection tests which were collected that day.
5. Rolling 7-day average is the average number of new confirmed COVID-19 cases collected 7 days prior to value.

**Figure 2. Cumulative confirmed COVID-19 cases by date of test collection, Dallas County: March 10 – September 25, 2020<sup>1-2</sup>**



1. Data received as of 8:00 pm yesterday, for residents of Dallas County tested with known specimen collection dates. This does include delayed results from previous days. All data are preliminary and subject to change as cases continue to be investigated.
2. Data are incomplete for the most recent dates. Test results may be reported to DCHHS several days after the result. The reporting lag is calculated as time from specimen collection to receipt of test results. The average reporting lag is 9.0 days, with a range from 0 – 126 days.

**Table 1. Source of laboratory testing for confirmed cases of COVID-19, Dallas County**

Source of Laboratory Testing for Reported Positive Molecular Amplification Detection Tests	# Tests (N=80,605)	% of Total Cases
Commercial or Hospital Laboratory*	78,716	97%
Dallas LRN Laboratory	1,617	2%
Other Public Health Laboratory	272	<1%

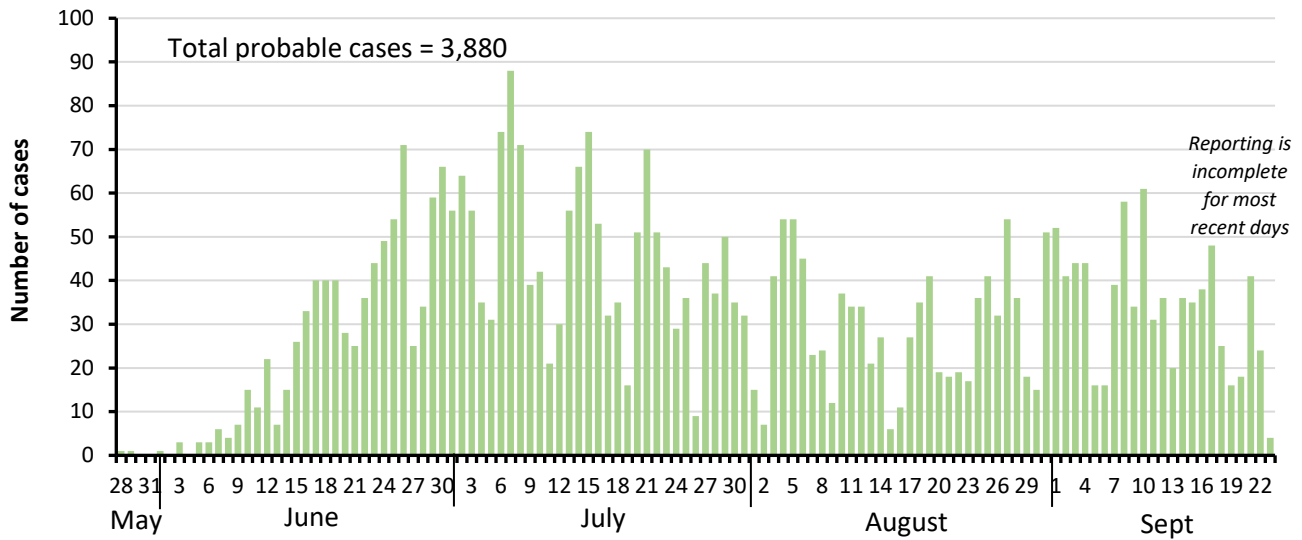
\* Includes: AIT, ARUP, CPL, Excelsior, LabCorp, Magnolia, Medfusion, Prism, Quest, Viracor, and multiple hospital laboratories

**Table 2. Characteristics of cumulative confirmed COVID-19 cases, Dallas County: March 9 – September 25, 2020**

	Number	% of Total Cases*
Total Cases in Dallas County residents	N = 80,605	100%
Age Group (years)	0 to 17	8,241 (10%)
	18 to 40	37,522 (47%)
	41 to 64	27,540 (34%)
	≥65	7,106 (9%)
Sex	Female	40,448 (51%)
	Male	39,287 (49%)
Not Hospitalized (Includes: Outpatient, urgent care, drive-through, ED)	72,735	90%
Ever Hospitalized	7,870	10%

\* Percentages calculated among cases with known age/sex

Figure 3. Probable COVID-19 cases by date of test collection, Dallas County: May 28 – September 25, 2020<sup>1-5</sup>



1. Data received as of 8:00 pm yesterday, for residents of Dallas County tested with known specimen collection dates. This does include delayed results from previous days. All data are preliminary and subject to change as cases continue to be investigated.
2. Data are incomplete for the most recent dates. Test results may be reported to DCHHS several days after the result. The reporting lag is calculated as time from specimen collection to receipt of test results.
3. This summary graph includes only probable cases which meet below CDC case definition. Probable cases are reported separately from confirmed cases.

Table 3. Characteristics of cumulative probable COVID-19 cases, Dallas County: May 28 – September 25, 2020

		Number	% of Total Cases*
Total Probable Cases in Dallas County residents		N = 3,880	100%
Age Group (years)	0 to 17	942	24%
	18 to 40	1,896	49%
	41 to 64	848	22%
	≥65	175	5%
Sex	Female	1,946	50%
	Male	1,920	50%

\* Percentages calculated among cases with known age/sex

**CDC Definition of a COVID-19 case:**

"A COVID-19 case includes [confirmed and probable cases and deaths](#). This change was made to reflect an interim [COVID-19 position](#) statement issued by the Council of State and Territorial Epidemiologists on April 5, 2020. The position statement included a case definition and made COVID-19 a [nationally notifiable disease](#)."

**CDC Definition of a COVID-19 probable case:**

"A [probable case or death](#) is defined as:

- A person meeting [clinical criteria](#) **AND** [epidemiologic evidence](#) with no confirmatory laboratory testing performed for COVID-19;
- A person meeting [presumptive laboratory evidence](#) **AND** either [clinical criteria](#) **OR** [epidemiologic evidence](#);
- A person meeting [vital records criteria](#) with no confirmatory laboratory testing performed for COVID-19."

\*Centers for Disease Control and Prevention FAQ: COVID-19 Data and Surveillance:

<https://www.cdc.gov/coronavirus/2019-ncov/covid-data/faq-surveillance.html>

\*\*See also Texas Department of State Health Services (DSHS) Case Definition:

<https://www.dshs.state.tx.us/coronavirus/docs/DSHS-COVID19CaseDefinitionandInvestigationPrioritizationGuidance.pdf>

**Table 4. Number of confirmed COVID-19 cases by age group and month of collection, Dallas County**

Age Group (in years)	0 to 17		18 to 22		23 to 39		40 to 64		≥65	
	N	%	N	%	N	%	N	%	N	%
March	27	2%	52	4%	430	31%	642	47%	224	16%
April	294	6%	298	6%	1,600	31%	2,303	44%	645	13%
May	755	10%	601	9%	2,403	32%	2,937	39%	770	10%
June	2,378	10%	2,262	9%	9,884	41%	7,836	33%	1,675	7%
July	3,160	12%	2,374	9%	8,854	34%	9,564	36%	2,328	9%
August	1,050	12%	953	11%	2,795	32%	3,108	35%	913	10%
September (thru 9/25)	531	10%	691	14%	1,743	34%	1,718	34%	423	8%

**Table 5. Confirmed and Probable COVID-19 cases in K-12 School Staff and Students by CDC week of test collection**

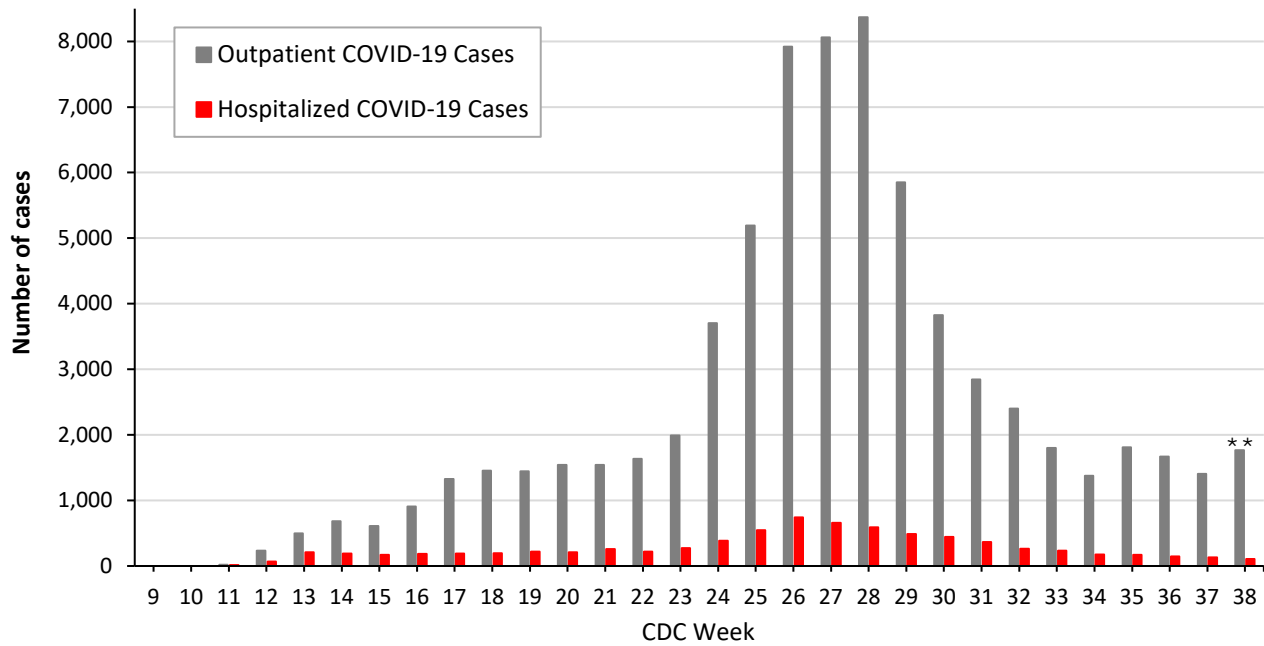
School District or School Type	Total Confirmed and Probable Cases in Staff and Students <sup>1</sup>		
	Week 36 (ending 9/5)	Week 37 (ending 9/12)	Week 38 (ending 9/19)
Carrollton-FB ISD <sup>2</sup>	7	10	7
Cedar Hill ISD	0	1	3
Coppell ISD	2	2	3
Dallas ISD <sup>2</sup>	55	48	91
DeSoto ISD <sup>2</sup>	0	2	6
Duncanville ISD <sup>2</sup>	2	5	3
Garland ISD <sup>2</sup>	24	43	29
Grand Prairie ISD <sup>2</sup>	8	16	9
Highland Park ISD	1	7	23
Irving ISD <sup>2</sup>	4	8	17
Lancaster ISD	1	0	4
Mesquite ISD	8	13	20
Richardson ISD	10	16	13
Rowlett ISD <sup>2</sup>	0	1	6
Sunnyvale ISD	0	2	1
Charter Schools	5	9	7
Private Schools	12	19	1
Homeschool	0	0	0
Non-Dallas County <sup>3</sup>	2	8	1
Unknown	8	0	0
<b>Total</b>	<b>149</b>	<b>210</b>	<b>244</b>

1. Data received as of 8:00 pm yesterday, for children ages 5 to 17 years of age residing in Dallas County and for adults employed in K-12 schools within Dallas County. These totals are updated weekly to include receipt of delayed test results. All data are preliminary and subject to change as cases continue to be investigated

2. Includes cases verified to be enrolled in the district and cases projected to be enrolled in the ISD by zip code of residence.

3. Individual who attends or works in a school in Dallas County, but does not reside in Dallas County

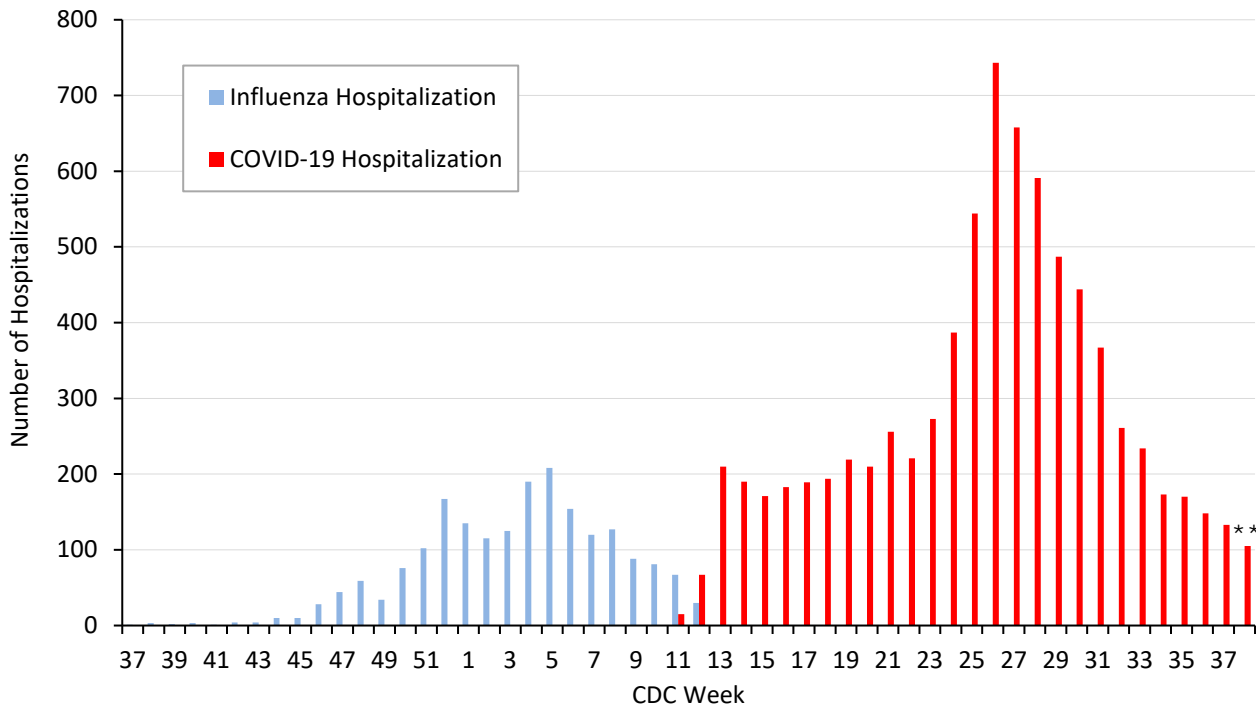
**Figure 5. Non-hospitalized and hospitalized confirmed COVID-19 cases by week of test collection, Dallas County: September 2019 through week ending September 19, 2020 (CDC Week 38)\***



\* Non-hospitalized includes all patients not admitted to acute-care hospitals (e.g. outpatient, urgent care, drive-through, ED-only, LTCF) and diagnosed with confirmed COVID-19. All data are preliminary and subject to change as cases continue to be received and investigated.

\*\* Data are incomplete for the most recent dates. Test results may be reported to DCHHS several days after the result. The reporting lag is calculated as time from specimen collection to receipt of molecular amplification detection test results.

**Figure 6. Influenza and confirmed COVID-19 hospitalizations by week of admission, Dallas County: September 2019 through week ending September 19, 2020 (CDC Week 38)\***



**Table 6. Characteristics of cumulative hospitalized confirmed COVID-19 cases, Dallas County: March 10 – September 25, 2020**

		Hospitalized Cases	%
<i>Ever Hospitalized</i>		N = 7,870	10% of Total Cases
Admitted to Intensive Care Unit		1,861	24%
Mechanical Ventilation		1,017	13%
Sex	Male	4,113	52%
	Female	3,757	48%
Age Group (years)	0-17	212	3%
	18-40	1,843	23%
	41-64	3,451	44%
	≥65	2,364	30%
Presence of ≥1 high risk condition		4,507	57%
Diabetes		2,393	30%
Lung Disease (e.g. COPD, asthma)		851	11%
Heart Disease (e.g. CHF)		1,094	14%
Kidney Disease (e.g. ESRD, dialysis)		845	11%
Cancer, Immune-compromise		556	7%
Obesity		1,368	17%
Race/ Ethnicity	White	1,274	16%*
	Hispanic	4,114	52%*
	Black	1,691	21%*
	Other	274	4%*
	Non-reported/ Unknown	517	7%

\* Percentages can also be calculated to exclude cases for which race/ethnicity was not reported

**Table 5. Characteristics of cumulative confirmed COVID-19 deaths, Dallas County: March 10 – September 25, 2020**

<i>Death classified as confirmed if decedent was a Dallas County resident with a positive molecular test. Data are obtained from ME office, hospitals, and vital statistics.</i>		Confirmed Deaths	% <sup>1</sup>
		N = 1,016	1.3% of Total Cases
Sex	Male	642	63%
	Female	374	37%
Age Group (years)	0-17	2	<1%
	18-40	43	4%
	41-64	334	33%
	≥65	637	63%
Resident of a Long-Term Care Facility		248	25%
Presence of ≥1 high risk condition		740	78%
Diabetes		451	48%
Race/ Ethnicity	White	264	<b>26%</b> (29% of population) <sup>2</sup>
	Hispanic	467	<b>46%</b> (41% of population) <sup>2</sup>
	Black	244	<b>24%</b> (24% of population) <sup>2</sup>
	Asian	29	<b>3%</b> (7% of population) <sup>2</sup>

<sup>1</sup> Percentages calculated among those with known underlying health conditions or race/ethnicity as reported by medical provider

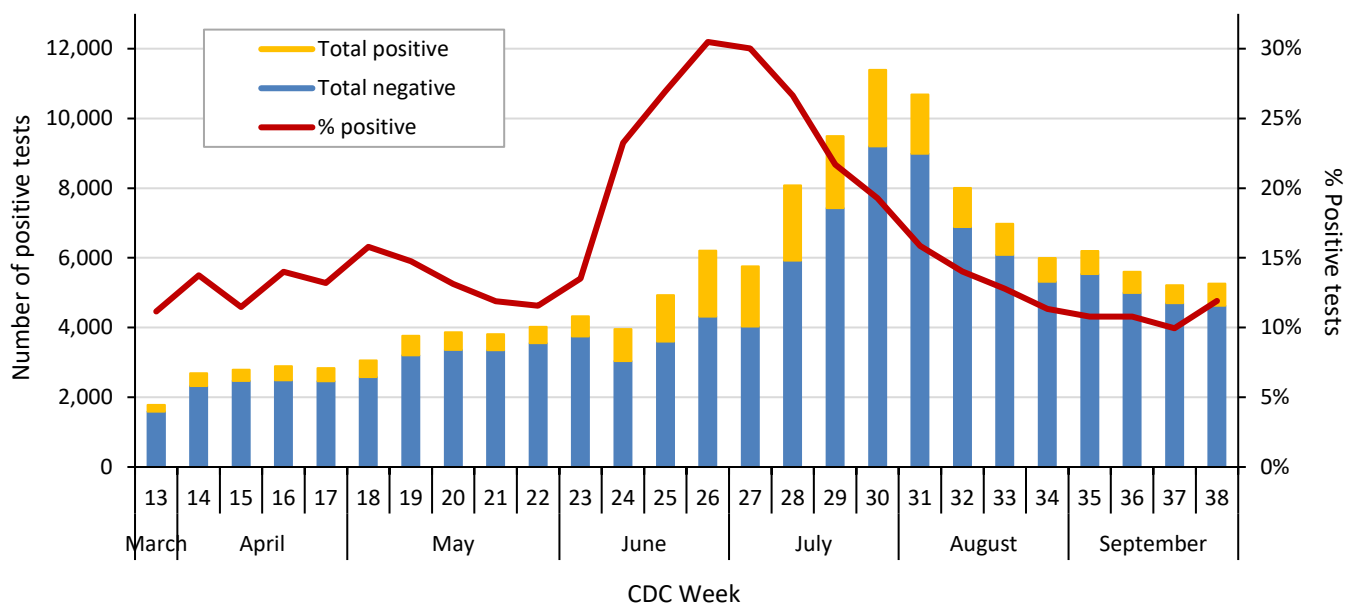
<sup>2</sup> 2019 U.S. Census population estimates for Dallas County

**Table 7. Respiratory virus testing by North Texas hospitals participating in public health surveillance programs: July 4 – September 19, 2020 (CDC Weeks 27-38)<sup>1-2</sup>**

Week Ending		7/18	7/25	8/1	8/8	8/15	8/22	8/29	9/5	9/12	9/19
SARS-CoV-2	Positive	2,058	2,197	1,694	1,122	891	680	668	604	519	626
	Total Tests	9,488	11,393	10,682	8,005	6,976	5,992	6,199	5,602	5,216	5,256
Novel Coronavirus	% Positive	21.7%	19.3%	15.9%	14.0%	12.8%	11.3%	10.8%	10.8%	10.0%	11.9%
Influenza	Positive	0	0	0	0	0	0	0	0	0	0
	Total Tests	134	132	143	129	78	65	136	199	154	164
	% Positive	0%	0%	0%	0%	0%	0%	0%	0%	0%	0%
Seasonal (non-SARS-2) Coronavirus	Positive	0	0	0	0	0	0	0	0	0	0
	Total Tests	51	41	56	48	35	23	45	62	40	37
	% Positive	0%	0%	0%	0%	0%	0%	0%	0%	0%	0%
Adenovirus (respiratory)	Positive	2	0	3	0	1	0	1	1	1	0
	Total Tests	124	125	124	111	77	65	128	178	127	110
	% Positive	1.6%	0%	2.4%	0%	1.3%	0%	0.8%	0.6%	0.8%	0%
Metapneumovirus	Positive	0	0	0	0	0	0	0	0	0	0
	Total Tests	124	125	124	103	77	65	128	178	127	110
	% Positive	0%	0%	0%	0%	0%	0%	0%	0%	0%	0%
Rhinovirus/Enterovirus	Positive	13	3	11	7	5	4	16	16	12	14
	Total Tests	124	125	124	111	77	65	128	178	127	110
	% Positive	10.5%	2.4%	8.9%	6.3%	6.5%	6.1%	12.5%	9.0%	9.4%	12.7%
RSV	Positive	0	0	0	0	0	0	0	0	0	0
	Total Tests	124	125	124	111	77	65	128	178	127	110
	% Positive	0%	0%	0%	0%	0%	0%	0%	0%	0%	0%

Data sources: National Respiratory and Enteric Virus Surveillance System and an additional subset of hospitals voluntarily reporting surveillance PCR data directly to DCHHS. Testing denominators include out-of-county patients and testing performed only through hospitals in Dallas County. (Does not include FEMA drive-thru clinics). Data are incomplete for the most recent dates.

**Figure 7. SARS-CoV-2 positive PCR tests reported to DCHHS by hospital laboratories: March 22 – September 12, 2020 (CDC Weeks 26-38)<sup>1-2</sup>**



1. Data received as of 8:00 pm yesterday. All data are preliminary and subject to change as cases continue to be received and investigated.
2. Data are incomplete for the most recent dates. Test results may be reported to DCHHS several days after the result.

**Table 8. Transmission risk factors for cumulative confirmed COVID-19 cases, Dallas County**

<b>Exposure Risk Factor</b>	<b>Cases (N= 80,605)</b>	<b>% of Total Cases</b>
International Travel	119	0.2%
Domestic Travel (Out-of-state)	316	0.4%
Cruise Ship Travel	14	<0.1%
Long-Term Care Facility (Resident) <sup>1</sup>	1,470	1.8%
County Jail (Inmate)	717	0.9%
State Jail (Inmate-- <a href="#">TDCJ COVID-19 Medical Action Center</a> ) <sup>2</sup>	96	0.1%
Federal Prison (Inmate) <sup>3</sup>	1,396	1.7%
Homeless Shelter	90	0.1%
Meat/Food Processing Facilities	591	0.7%
Close contact or Presumed Community Transmission <sup>4</sup>	75,796	94.0%

<sup>1</sup> Does not include over 565 COVID-19 cases reported in LTCF staff members employed by the > 112 affected LTCFs.

<sup>2</sup> Texas Department of Criminal Justice cases are under the jurisdiction of the Texas Department of State Health Services for investigation

<sup>3</sup> Federal prison cases are under the jurisdiction of the federal government for investigation, but are now included in total County cases

<sup>4</sup> Includes: household transmission and cases with no other exposure risk factors identified

**Table 8. Summary of weekly COVID-19 hospitalizations and deaths from Dallas County hospitals, Vital Statistics and Medical Examiner’s office<sup>1-4</sup>**

<b>Week Ending</b>	<b>07/18</b>	<b>07/25</b>	<b>08/01</b>	<b>08/08</b>	<b>08/15</b>	<b>08/22</b>	<b>08/29</b>	<b>09/05</b>	<b>09/12</b>	<b>09/19</b>	<b>9/08/19– Present</b>
<b>CDC Week</b>	<b>29</b>	<b>30</b>	<b>31</b>	<b>32</b>	<b>33</b>	<b>34</b>	<b>35</b>	<b>36</b>	<b>37</b>	<b>38</b>	
COVID-19 hospitalizations <sup>1</sup>	487	444	367	261	234	173	170	148	133	105	7,870*
COVID-19 ICU admissions <sup>1</sup>	120	90	103	65	57	39	32	19	27	16	1,861*
Probable COVID-19-associated deaths <sup>2</sup>	0	3	2	3	3	0	0	0	0	0	11*
Confirmed COVID-19-associated deaths <sup>3</sup>	79	100	79	57	53	40	36	17	10	8	1,016*

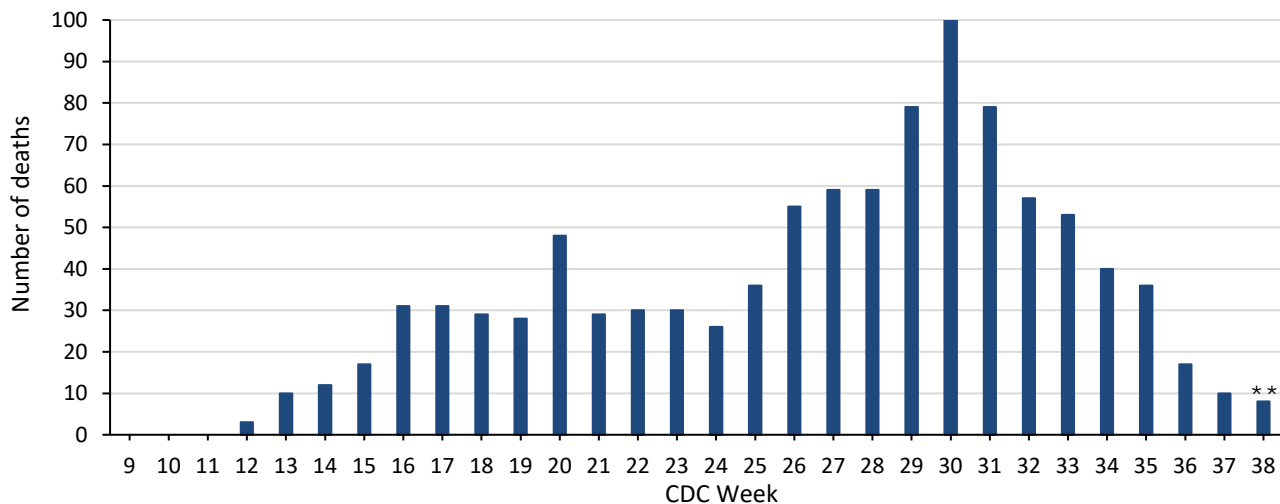
\* All data are preliminary and subject to change as cases continue to be received and investigated.

<sup>1</sup> Reflects all COVID-19-associated hospitalizations and intensive care unit admissions reported from area hospitals within Dallas County by week of admission. Hospitalizations are inclusive of ICU admissions. Data are preliminary and include reports received as of 8:00 pm yesterday.

<sup>2</sup> Probable COVID-19 deaths as defined by CSTE interim case classification criteria--meeting vital records criteria without molecular lab test confirmation.

<sup>3</sup> Confirmed COVID-19 deaths as defined by a positive molecular amplification detection test *and* any of the following: (1) death certificate denotation, (2) medical record documentation of compatible symptoms and clear progression from illness to death, or (3) determination by the County Medical Examiner’s office (ME) of no alternate cause of death. Does not include possible COVID-19-associated deaths with pending determination of cause of death.

**Figure 8. Confirmed COVID-19-associated deaths by week of death, Dallas County: March 2019 through week ending September 19, 2020 (CDC Week 38)\***

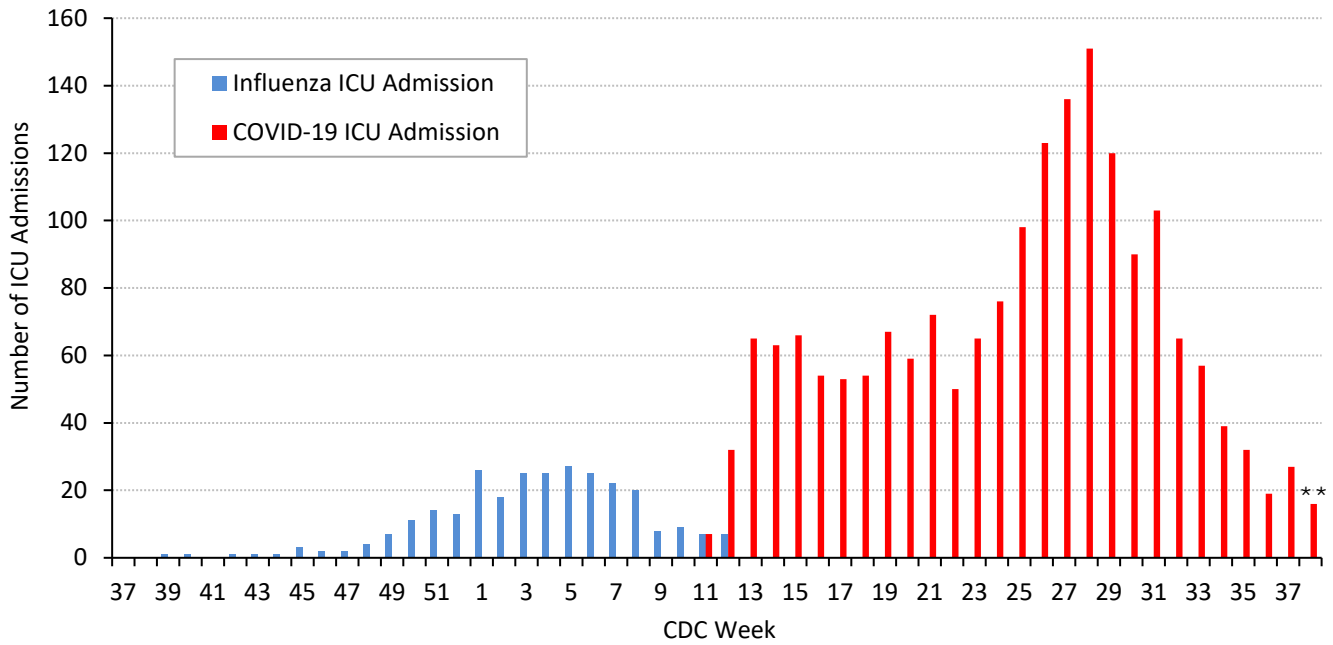


\* Dallas County residents diagnosed with confirmed COVID-19 by molecular amplification detection testing.

\*\* All data are preliminary and subject to change as cases continue to be received and investigated.

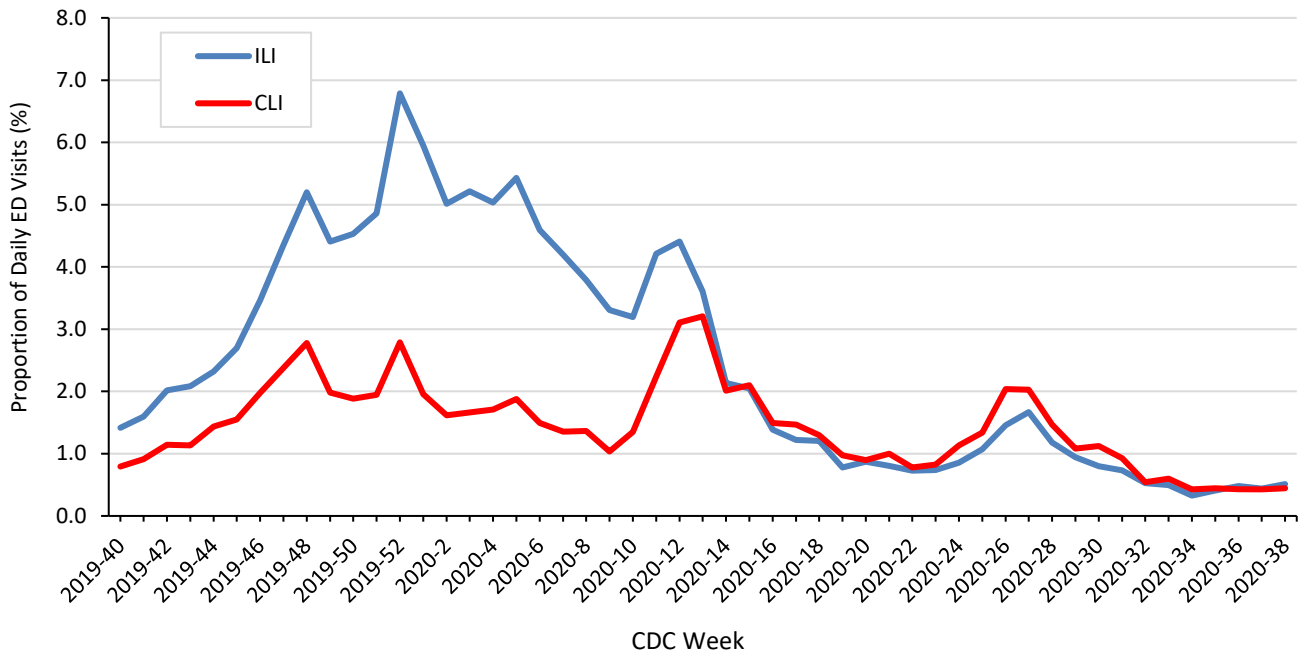


**Figure 9. Intensive care unit hospitalizations for influenza and COVID-19 by week of admission, Dallas County: September 2019 through week ending September 19, 2020 (CDC Week 38)\***



\* New ICU admissions of Dallas County residents reported with confirmed COVID-19 by molecular amplification detection testing as of 8:00 pm yesterday. Hospitalized patients with self-reported residence from outside of Dallas County are not included.  
 \*\* All data are preliminary and subject to change as cases continue to be received and investigated.

**Figure 10. Syndromic surveillance of emergency department visits for COVID-like illness (CLI)\* and Influenza-like illness (ILI)\*\*, Dallas County: September 29, 2019 – September 19, 2020**



ESSENCE Data is from 18 hospital emergency departments voluntarily reporting numbers of persons presenting with self-reported chief complaints.  
 \* CLI is defined as chief complaint of fever and cough or shortness of breath or difficulty breathing.  
 \*\*ILI is defined as chief complaint of fever and cough or sore throat or mention of influenza.

Table 9. Occupations of hospitalized patients with confirmed COVID-19, Dallas County, 3/10 – 8/17/20

Occupation	Hospitalized Cases (%) of Total Employed	
	Position	Sector
<b>Critical Infrastructure Workers*</b>		1,406 (78%)
Healthcare and Public Health		216 (12%)
	<i>Nurse, LVN, CNA</i>	36
	<i>Physician</i>	10
	<i>Other: Dentist, dietary, home health, medical assistant, mental health, PCT</i>	170
Transportation and Logistics		177 (10%)
	<i>Airline/Airport</i>	14
	<i>Parcel or postal delivery</i>	17
	<i>Cab/rideshare or bus driver</i>	21
	<i>Other: Mechanic, truck driver, freight, railroad</i>	125
Food and Agriculture		268 (15%)
	<i>Grocery</i>	52
	<i>Restaurant</i>	81
	<i>Other: Food processing, production, supply</i>	135
Other Community/Government Essential Functions		98 (5%)
	<i>Clergy (Pastor, priest)</i>	11
	<i>Education (Teacher, administration)</i>	30
	<i>Judicial system (Attorney)</i>	11
	<i>Other: Real estate services, shelter services, government operations</i>	46
Public Works and Infrastructure Support Services		231 (13%)
	<i>Construction/Contractor</i>	167
	<i>Other: Waste disposal, landscaping, maintenance</i>	64
Financial ( <i>Accounting, bank, insurance</i> )		68 (4%)
Communications and Information Technology		28 (2%)
Commercial Facilities ( <i>Building materials, painting, warehouse</i> )		133 (7%)
Hygiene Services ( <i>Custodian, housekeeping</i> )		73 (4%)
Law Enforcement, Public Safety, First Responders		48 (3%)
Critical Manufacturing ( <i>Manufacturing metal, packaging</i> )		45 (2%)
Energy/Utilities ( <i>Electricity, petroleum, gas</i> )		21 (1%)
<b>Non-Critical Infrastructure Workers (Includes retail, personal services)</b>		260 (14%)
<b>Employed (position not reported)</b>		139 (8%)
<b>Total reporting any employment</b>		<b>1,805</b>
<b>Non-Employed (Includes retired, child, homemaker, etc.)</b>		2,121
<b>Student (≥18 years old)</b>		66
<b>Not reported</b>		2,986
<b>Total hospitalized</b>		<b>6,978</b>

\* Includes only residents of Dallas County with self-reported occupational information. All data is preliminary and subject to change.

\*\*CISA Advisory Memorandum on Identification of Essential Critical Infrastructure Workers During COVID-19 Response, v3.1, May 19, 2020

[https://www.cisa.gov/sites/default/files/publications/Version\\_3.1\\_CISA\\_Guidance\\_on\\_Essential\\_Critical\\_Infrastructure\\_Workers.pdf](https://www.cisa.gov/sites/default/files/publications/Version_3.1_CISA_Guidance_on_Essential_Critical_Infrastructure_Workers.pdf).

**Table 10. Cumulative COVID-19 cases by city of residence within Dallas County as of September 25, 2020**

(e.g. Does not include cases who reside in portions of cities which are not within Dallas County.)

City of Residence	Confirmed Cases (N=80,605)	Probable Cases (N=3,880)	Total Confirmed + Probable Cases reported in 14 day period from 8/30 – 9/12*	Estimated COVID-19 Prevalence (%) in 14 day period from 8/30 – 9/12** (lower – upper estimate range)
Addison	331	14	18	0.33 - 1.11
Balch Springs	887	45	53	0.64 - 2.12
Carrollton	1,366	53	42	0.22 - 0.74
Cedar Hill	1,291	54	66	0.42 - 1.39
Cockrell Hill	174	2	1	0.07 - 0.24
Combine	11	0	0	N/A
Coppell	419	104	49	0.36 - 1.21
Dallas	42,122	1,971	1,884	0.45 - 1.49
DeSoto	1,447	24	67	0.38 - 1.26
Duncanville	1,290	42	68	0.53 - 1.75
Farmers Branch	744	34	22	0.14 - 0.46
Ferris	5	0	0	N/A
Garland	7,339	39	336	0.42 - 1.40
Glenn Heights	183	9	13	0.38 - 1.27
Grand Prairie	4,012	413	210	0.47 - 1.57
Highland Park	85	30	9	0.30 - 0.99
Hutchins	229	2	3	0.15 - 0.51
Irving	7,765	280	394	0.49 - 1.64
Lancaster	1,225	26	65	0.50 - 1.66
Lewisville	1	1	0	N/A
Mesquite	4,502	328	210	0.45 - 1.49
Ovilla	1	0	0	N/A
Richardson	1,374	94	72	0.25 - 0.83
Rowlett	1,044	18	69	0.35 - 1.17
Sachse	214	3	16	0.27 - 0.90
Seagoville	1,959	28	45	0.80 - 2.67
Sunnyvale	136	24	14	0.61 - 2.05
University Park	228	232	126	1.51 - 5.04
Wilmer	213	4	5	0.31 - 1.05
Wylie	8	2	0	N/A
<b>Dallas County</b>	<b>80,605</b>	<b>3,880</b>	<b>3,860</b>	<b>0.44 - 1.46</b>

\*Sum of confirmed and probable cases by date of test collection, for 14 day timeframe from: August 30– September 12, 2020. Most recent 2 weeks not included due to average reporting lag of 9.0 days. Case numbers are only for portions of each city which are within Dallas County.

\*\*Estimated COVID-19 prevalence rate ranges calculated based on: Fox SJ, Lachmann M, Meyers LA. "COVID-19 Campus Introduction Risks for School Reopenings" presented to the TEA on July 22, 2020. Denominator populations are only for portions of each city which are within Dallas County. [https://sites.cns.utexas.edu/sites/default/files/cid/files/covid-19\\_school\\_introduction\\_risks.pdf?m=1595468503](https://sites.cns.utexas.edu/sites/default/files/cid/files/covid-19_school_introduction_risks.pdf?m=1595468503)

**Table 11. Summary of weekly COVID-19 confirmed and probable cases and deaths, Dallas County (CDC Weeks 34 - 38)**

CDC Week	Week Ending	Total Confirmed and Probable Cases	Total School-Aged Cases (5 to 17 years)	Daily Average New Confirmed and Probable Cases*	Daily Average New Confirmed and Probable Deaths**	Percentage of Tests Positive for SARS-CoV-2***
34	8/22/2020	1,714	182	245	6	11.3%
35	8/29/2020	2,196	189	314	5	10.8%
36	9/5/2020	2,053	149	293	2	10.8%
37	9/12/2020	1,807	180	258	1	10.0%
38	9/19/2020	2,070	225	296	1	11.9%

\* For 7-day time period for respective CDC week by date of test collection;  
 \*\* For 7-day time period for respective CDC week by date of death  
 \*\*\* See Table 6 for historical data

***Many Thanks to:***

Our area hospitals and healthcare providers for reporting lab-confirmed COVID-19 cases

Our DCHHS Case and Contact Investigations Team volunteers from:

Dallas County Medical Society

UT Southwestern Medical School

Texas A&M College of Medicine

UTHealth School of Public Health

Retired School Nurses

New COVID-19 cases are reported as a daily aggregate, with this cumulative summary updated Tuesdays and Fridays.

DCHHS COVID-19 Summaries and Case Report Form are accessible at:

<https://www.dallascounty.org/departments/dchhs/2019-novel-coronavirus.php>

**DCHHS Acute Communicable Disease Epidemiology Division:** COVID-19@dallascounty.org