

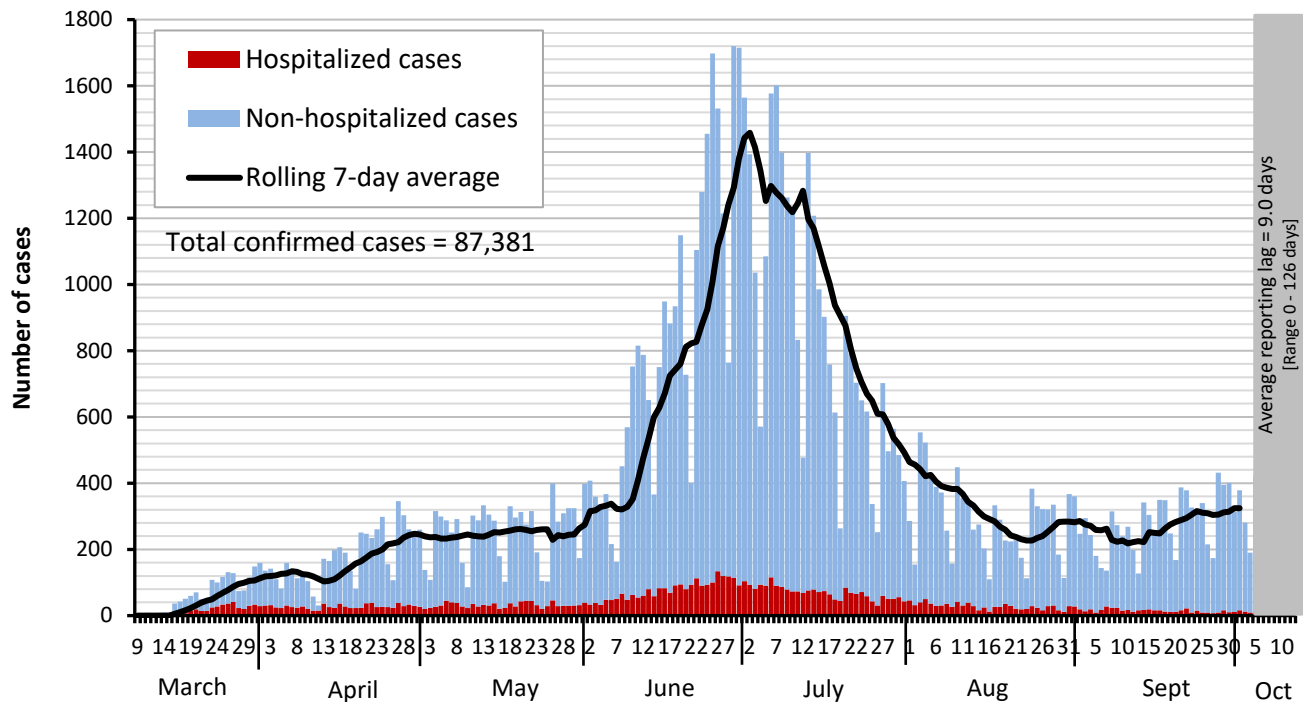


# Dallas County Health and Human Services 2019 Novel Coronavirus (COVID-19) Summary

October 13, 2020

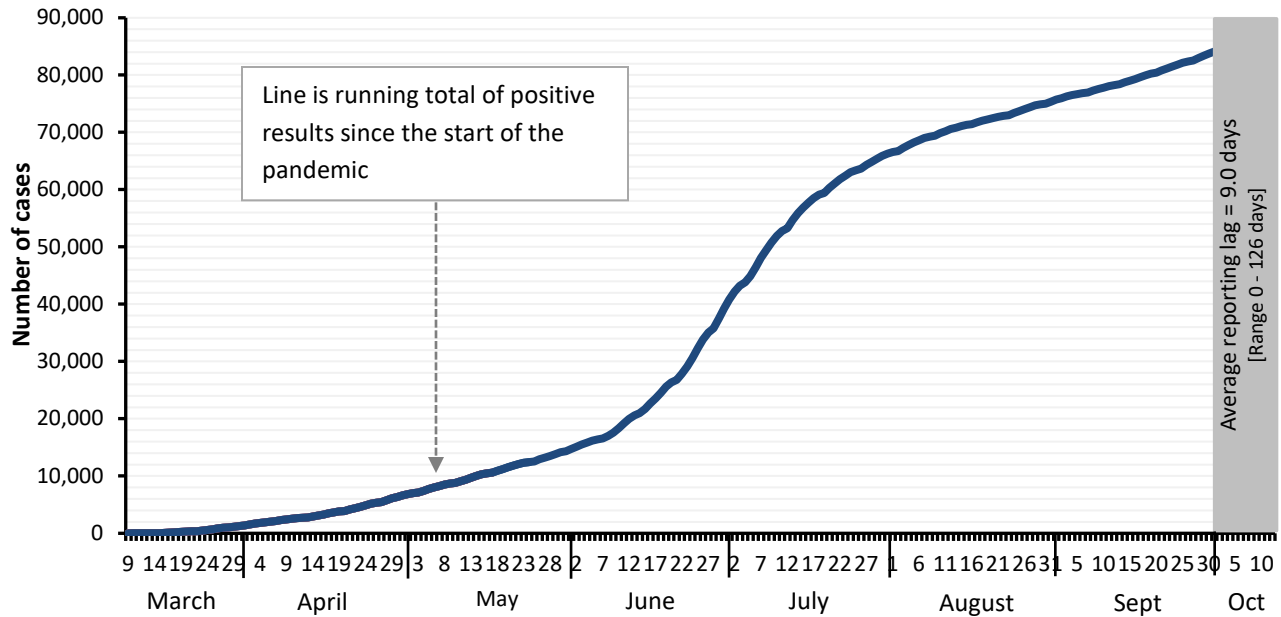
- As of October 13, 2020, DCHHS is reporting 606 additional confirmed cases of 2019 novel coronavirus (COVID-19), bringing the total number of confirmed cases in Dallas County to 87,381 including 1,057 confirmed deaths. The total number of probable cases in Dallas County is 4,374 including 13 probable COVID-19 deaths.
- The provisional 7-day average daily new confirmed and probable cases (by date of test collection) for CDC week 40 was 374. The percentage of respiratory specimens testing positive for SARS-CoV-2 remains high, with 10.0% of symptomatic patients presenting to area hospitals testing positive in week 40 (week ending 10/3/2020).
- A provisional total of 283 confirmed and probable COVID-19 cases were diagnosed in school-aged children (5 to 17 years) during CDC week 40, an increase from the previous week for this age group.
- Of the 8,097 cases requiring hospitalization to date, almost three-quarters (70%) have been under 65 years of age, and over half reported having a chronic health condition. Diabetes has been an underlying high-risk health condition reported in about a third of all hospitalized patients with COVID-19.
- Of cases requiring hospitalization who reported employment, almost 80% have been critical infrastructure workers, with a broad range of affected occupational sectors, including: healthcare, transportation, food and agriculture, public works, finance, communications, clergy, first responders and other essential functions.
- Twenty-five percent (25%) of deaths have been associated with long-term care facilities.

Figure 1. Confirmed COVID-19 positive cases by date of test collection, Dallas County: March 10 – October 13, 2020<sup>1-4</sup>



1. Data received as of 8:00 pm yesterday, for residents of Dallas County tested with known specimen collection dates. This does include delayed results from previous days. All data are preliminary and subject to change as cases continue to be investigated.
2. Data are incomplete for the most recent dates. Test results may be reported to DCHHS several days after the result. The reporting lag is calculated as time from specimen collection to receipt of test results. The average reporting lag is 9.0 days, with a range from 0 – 126 days.
3. This summary graph includes only confirmed cases based on molecular amplification detection test results.
4. Bars are the number of positive molecular amplification detection tests which were collected that day.
5. Rolling 7-day average is the average number of new confirmed COVID-19 cases collected 7 days prior to value.

**Figure 2. Cumulative confirmed COVID-19 cases by date of test collection, Dallas County: March 10 – October 13, 2020<sup>1-2</sup>**



1. Data received as of 8:00 pm yesterday, for residents of Dallas County tested with known specimen collection dates. This does include delayed results from previous days. All data are preliminary and subject to change as cases continue to be investigated.
2. Data are incomplete for the most recent dates. Test results may be reported to DCHHS several days after the result. The reporting lag is calculated as time from specimen collection to receipt of test results. The average reporting lag is 9.0 days, with a range from 0 – 126 days.

**Table 1. Source of laboratory testing for confirmed cases of COVID-19, Dallas County**

Source of Laboratory Testing for Reported Positive Molecular Amplification Detection Tests	# Tests (N=87,381)	% of Total Cases
Commercial or Hospital Laboratory*	85,437	97%
Dallas LRN Laboratory	1,668	2%
Other Public Health Laboratory	276	<1%

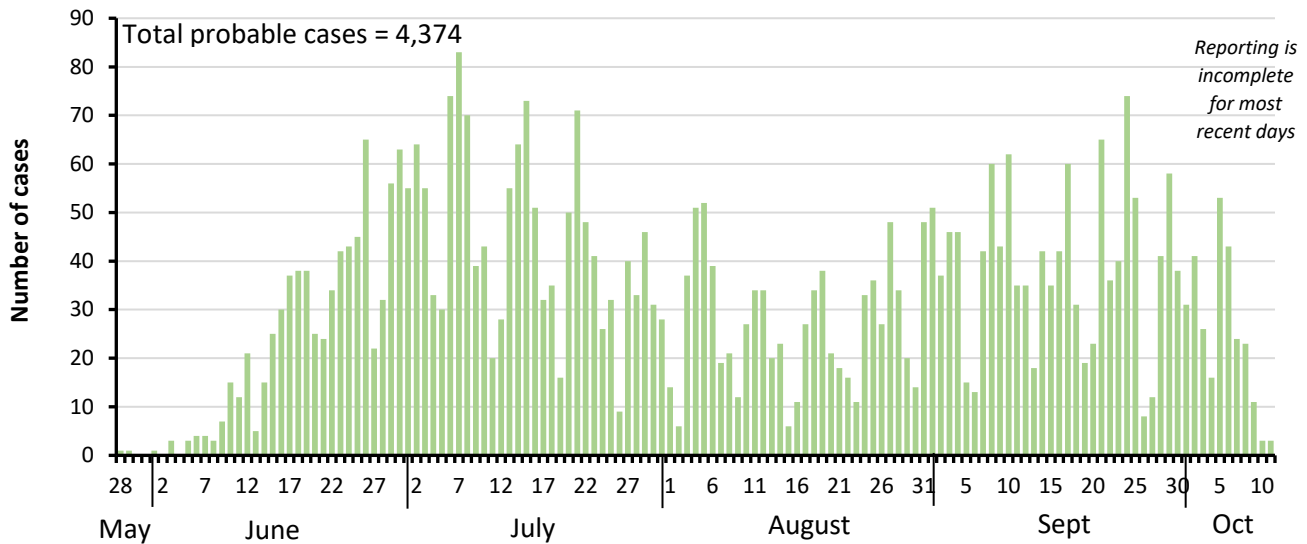
\* Includes: AIT, ARUP, CPL, Excelsior, LabCorp, Magnolia, Medfusion, Prism, Quest, Viracor, and multiple hospital laboratories

**Table 2. Characteristics of cumulative confirmed COVID-19 cases, Dallas County: March 9 – October 13, 2020**

	Number	% of Total Cases*
Total Cases in Dallas County residents	N = 87,381	100%
Age Group (years)	0 to 17	10%
	18 to 40	47%
	41 to 64	34%
	≥65	9%
Sex	Female	51%
	Male	49%
Not Hospitalized (Includes: Outpatient, urgent care, drive-through, ED)	79,284	91%
Ever Hospitalized	8,097	9%

\* Percentages calculated among cases with known age/sex

Figure 3. Probable COVID-19 cases by date of test collection, Dallas County: May 28 – October 13, 2020<sup>1-5</sup>



1. Data received as of 8:00 pm yesterday, for residents of Dallas County tested with known specimen collection dates. This does include delayed results from previous days. All data are preliminary and subject to change as cases continue to be investigated.
2. Data are incomplete for the most recent dates. Test results may be reported to DCHHS several days after the result. The reporting lag is calculated as time from specimen collection to receipt of test results.
3. This summary graph includes only probable cases which meet below CDC case definition. Probable cases are reported separately from confirmed cases.

Table 3. Characteristics of cumulative probable COVID-19 cases, Dallas County: May 28 – October 13, 2020

		Number	% of Total Cases*
Total Probable Cases in Dallas County residents		N = 4,374	100%
Age Group (years)	0 to 17	1,093	25%
	18 to 40	2,122	49%
	41 to 64	958	22%
	≥65	196	4%
Sex	Female	2,200	51%
	Male	2,136	49%

\*Percentages calculated among cases with known age/sex

**CDC Definition of a COVID-19 case:**

"A COVID-19 case includes [confirmed and probable cases and deaths](#). This change was made to reflect an interim [COVID-19 position](#) statement issued by the Council of State and Territorial Epidemiologists on April 5, 2020. The position statement included a case definition and made COVID-19 a [nationally notifiable disease](#)."

**CDC Definition of a COVID-19 probable case:**

"A [probable case or death](#) is defined as:

- A person meeting [clinical criteria](#) **AND** [epidemiologic evidence](#) with no confirmatory laboratory testing performed for COVID-19;
- A person meeting [presumptive laboratory evidence](#) **AND** either [clinical criteria](#) **OR** [epidemiologic evidence](#);
- A person meeting [vital records criteria](#) with no confirmatory laboratory testing performed for COVID-19."

\*Centers for Disease Control and Prevention FAQ: COVID-19 Data and Surveillance:

<https://www.cdc.gov/coronavirus/2019-ncov/covid-data/faq-surveillance.html>

\*\*See also Texas Department of State Health Services (DSHS) Case Definition:

<https://www.dshs.state.tx.us/coronavirus/docs/DSHS-COVID19CaseDefinitionandInvestigationPrioritizationGuidance.pdf>

**Table 4. Number of confirmed COVID-19 cases by age group and month of collection, Dallas County**

Age Group (in years)	0 to 17		18 to 22		23 to 39		40 to 64		≥65	
	N	%	N	%	N	%	N	%	N	%
March	27	2%	52	4%	430	31%	642	47%	224	16%
April	294	6%	298	6%	1,600	31%	2,303	44%	645	13%
May	755	10%	601	9%	2,403	32%	2,937	39%	770	10%
June	2,378	10%	2,262	9%	9,884	41%	7,836	33%	1,675	7%
July	3,160	12%	2,374	9%	8,854	34%	9,564	36%	2,328	9%
August	1,050	12%	953	11%	2,795	32%	3,108	35%	913	10%
September	908	11%	999	12%	2,856	35%	2,790	34%	675	8%
October (thru 10/13)	384	12%	263	9%	1,083	35%	1,086	35%	269	9%

**Table 5. Confirmed and Probable COVID-19 cases in K-12 School Staff and Students by CDC week of test collection**

School District or School Type	Total Confirmed and Probable Cases in Staff and Students <sup>1</sup>		
	Week 36 (ending 9/5)	Week 37 (ending 9/12)	Week 38 (ending 9/19)
Carrollton-FB ISD <sup>2</sup>	7	10	7
Cedar Hill ISD	0	1	3
Coppell ISD	2	2	3
Dallas ISD <sup>2</sup>	55	48	91
DeSoto ISD <sup>2</sup>	0	2	6
Duncanville ISD <sup>2</sup>	2	5	3
Garland ISD <sup>2</sup>	24	44	35
Grand Prairie ISD <sup>2</sup>	8	16	9
Highland Park ISD	1	7	23
Irving ISD <sup>2</sup>	4	8	17
Lancaster ISD	1	0	4
Mesquite ISD	8	13	20
Richardson ISD	10	16	13
Sunnyvale ISD	0	2	1
Charter Schools	5	9	7
Private Schools	12	19	1
Homeschool	0	0	0
Non-Dallas County <sup>3</sup>	2	8	1
Unknown	5	0	0
<b>Total</b>	<b>146</b>	<b>210</b>	<b>244</b>

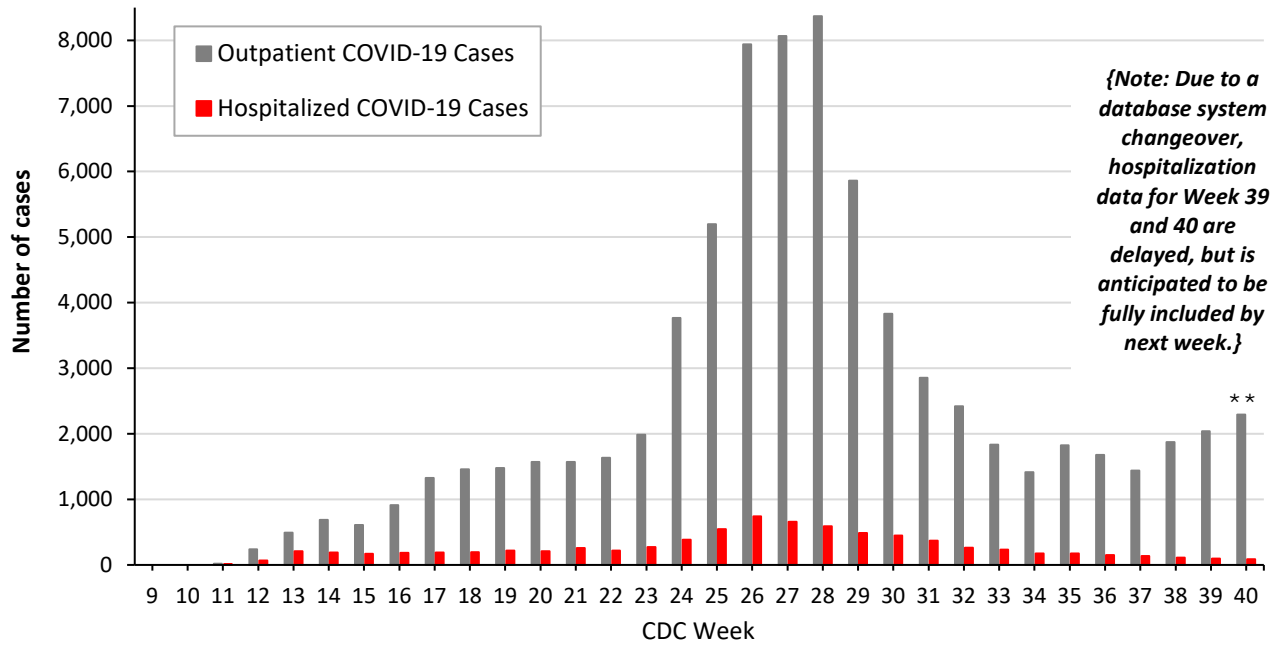
1. Data received as of 8:00 pm 9/30/20, for children ages 5 to 17 years of age residing in Dallas County and for adults employed in K-12 schools within Dallas County. These totals are updated weekly to include receipt of delayed test results. All data are preliminary and subject to change as cases continue to be investigated

2. Includes cases verified to be enrolled in the district and cases projected to be enrolled in the ISD by zip code of residence.

3. Individual who attends or works in a school in Dallas County, but does not reside in Dallas County

**{Note: Due to a database system changeover initiated last week, school data for Week 39 and 40 are not currently available, but is anticipated to resume by next week.}**

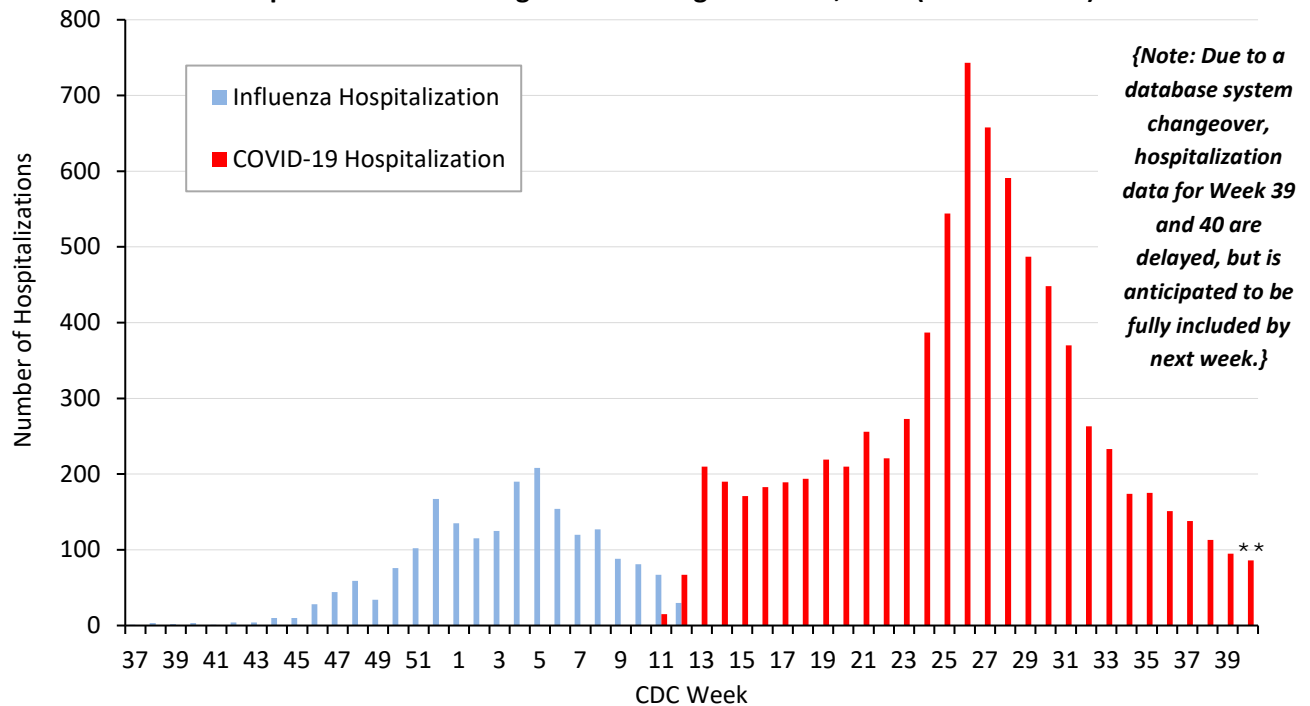
**Figure 5. Non-hospitalized and hospitalized confirmed COVID-19 cases by week of test collection, Dallas County: September 2019 through week ending October 3, 2020 (CDC Week 40)\***



\* Non-hospitalized includes all patients not admitted to acute-care hospitals (e.g. outpatient, urgent care, drive-through, ED-only, LTCF) and diagnosed with confirmed COVID-19. All data are preliminary and subject to change as cases continue to be received and investigated.

\*\* Data are incomplete for the most recent dates. Test results may be reported to DCHHS several days after the result. The reporting lag is calculated as time from specimen collection to receipt of molecular amplification detection test results.

**Figure 6. Influenza and confirmed COVID-19 hospitalizations by week of admission, Dallas County: September 2019 through week ending October 3, 2020 (CDC Week 40)\***



\* Hospitalized Dallas County residents diagnosed with confirmed COVID-19 by molecular amplification detection testing. All data are preliminary and subject to change as cases continue to be received and investigated.

\*\* Data are incomplete for the most recent dates. Test results may be reported to DCHHS several days after the result. The reporting lag is calculated as time from specimen collection to receipt of test results.

**Table 6. Characteristics of cumulative hospitalized confirmed COVID-19 cases, Dallas County: March 10 – October 13, 2020**

		Hospitalized Cases	%
<i>Ever Hospitalized</i>		N = 8,097	10% of Total Cases
Admitted to Intensive Care Unit		1,920	24%
Mechanical Ventilation		1,033	13%
Sex	Male	4,237	52%
	Female	3,860	48%
Age Group (years)	0-17	217	3%
	18-40	1,882	23%
	41-64	3,546	44%
	≥65	2,452	30%
Presence of ≥1 high risk condition		4,612	57%
Diabetes		2,448	30%
Lung Disease (e.g. COPD, asthma)		866	11%
Heart Disease (e.g. CHF)		1,112	14%
Kidney Disease (e.g. ESRD, dialysis)		862	11%
Cancer, Immune-compromise		569	7%
Obesity		1,407	17%
Race/ Ethnicity	White	1,303	16%*
	Hispanic	4,203	52%*
	Black	1,756	22%*
	Other	285	3%*
	Non-reported/ Unknown	550	7%

\* Percentages can also be calculated to exclude cases for which race/ethnicity was not reported

**Table 7. Characteristics of cumulative confirmed COVID-19 deaths, Dallas County: March 10 – October 13, 2020**

<i>Death classified as confirmed if decedent was a Dallas County resident with a positive molecular test. Data are obtained from ME office, hospitals, and vital statistics.</i>		Confirmed Deaths	% <sup>1</sup>
		N = 1,057	1.2% of Total Cases
Sex	Male	665	63%
	Female	392	37%
Age Group (years)	0-17	2	<1%
	18-40	46	4%
	41-64	345	33%
	≥65	664	63%
Resident of a Long-Term Care Facility		260	25%
Presence of ≥1 high risk condition		784	78%
Diabetes		480	48%
Race/ Ethnicity	White	273	<b>26%</b> (29% of population) <sup>2</sup>
	Hispanic	486	<b>46%</b> (41% of population) <sup>2</sup>
	Black	255	<b>24%</b> (24% of population) <sup>2</sup>
	Asian	30	<b>3%</b> (7% of population) <sup>2</sup>

<sup>1</sup> Percentages calculated among those with known underlying health conditions or race/ethnicity as reported by medical provider

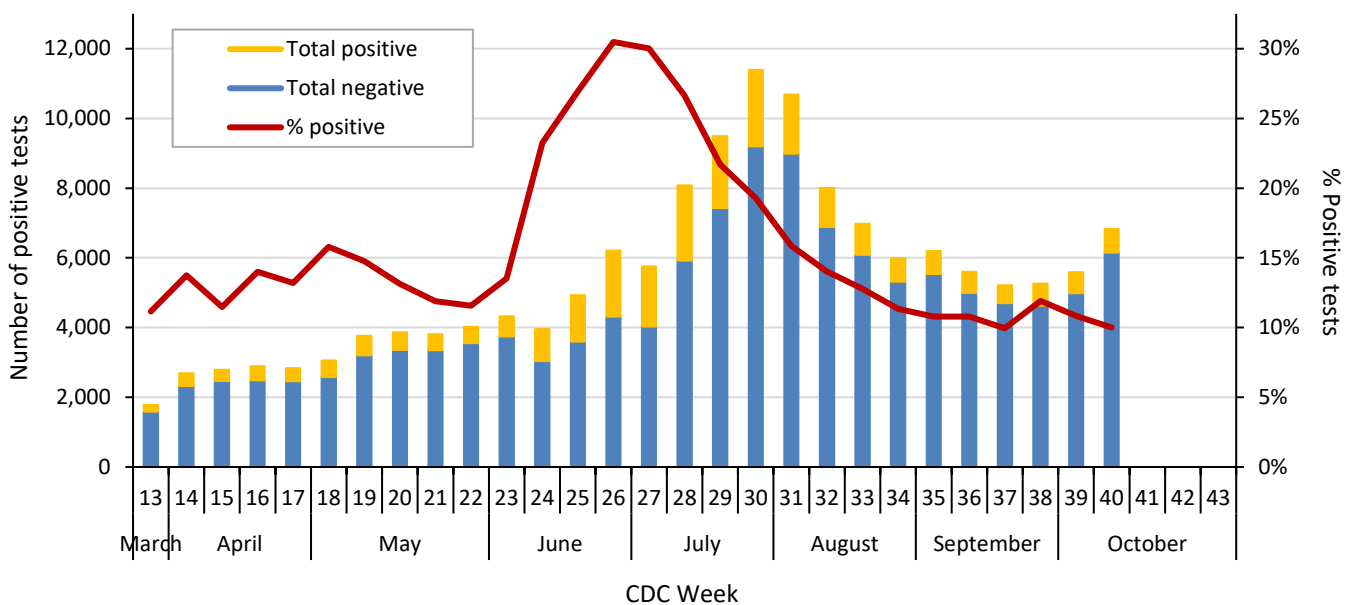
<sup>2</sup> 2019 U.S. Census population estimates for Dallas County

**Table 8. Respiratory virus testing by North Texas hospitals participating in public health surveillance programs: July 26 – October 3, 2020 (CDC Weeks 31-40)<sup>1-2</sup>**

Week Ending		8/1	8/8	8/15	8/22	8/29	9/5	9/12	9/19	9/26	10/3
SARS-CoV-2	Positive	1,694	1,122	891	680	668	604	519	626	605	683
	Total Tests	10,682	8,005	6,976	5,992	6,199	5,602	5,216	5,256	5,588	6,833
Novel Coronavirus	% Positive	15.9%	14.0%	12.8%	11.3%	10.8%	10.8%	10.0%	11.9%	10.8%	10.0%
Influenza	Positive	0	0	0	0	0	0	0	0	0	0
	Total Tests	143	129	78	65	136	199	185	190	215	231
	% Positive	0%	0%	0%	0%	0%	0%	0%	0%	0%	0%
Seasonal (non-SARS-2) Coronavirus	Positive	0	0	0	0	0	0	0	0	0	0
	Total Tests	56	48	35	23	45	62	71	37	72	60
	% Positive	0%	0%	0%	0%	0%	0%	0%	0%	0%	0%
Adenovirus (respiratory)	Positive	3	0	1	0	1	1	2	0	3	2
	Total Tests	124	111	77	65	128	178	158	136	168	162
	% Positive	2.4%	0%	1.3%	0%	0.8%	0.6%	1.3%	0%	1.8%	1.2%
Metapneumovirus	Positive	0	0	0	0	0	0	0	0	0	0
	Total Tests	124	103	77	65	128	178	158	136	168	162
	% Positive	0%	0%	0%	0%	0%	0%	0%	0%	0%	0%
Rhinovirus/Enterovirus	Positive	11	7	5	4	16	16	21	21	26	23
	Total Tests	124	111	77	65	128	178	158	136	168	162
	% Positive	8.9%	6.3%	6.5%	6.1%	12.5%	9.0%	13.3%	15.4%	15.5%	14.2%
RSV	Positive	0	0	0	0	0	0	0	0	0	0
	Total Tests	126	117	78	65	113	187	164	147	189	185
	% Positive	0%	0%	0%	0%	0%	0%	0%	0%	0%	0%

Data sources: National Respiratory and Enteric Virus Surveillance System and an additional subset of hospitals voluntarily reporting surveillance PCR data directly to DCHHS. Testing denominators include out-of-county patients and testing performed only through hospitals in Dallas County. (Does not include FEMA drive-thru clinics). Data are incomplete for the most recent dates.

**Figure 7. SARS-CoV-2 positive PCR tests reported to DCHHS by hospital laboratories: March 22 – October 3, 2020 (CDC Weeks 26-40)<sup>1-2</sup>**



1. Data received as of 8:00 pm yesterday. All data are preliminary and subject to change as cases continue to be received and investigated.
2. Data are incomplete for the most recent dates. Test results may be reported to DCHHS several days after the result.

**Table 9. Transmission risk factors for cumulative confirmed COVID-19 cases, Dallas County**

Exposure Risk Factor	Cases (N= 87,381)	% of Total Cases
International Travel	124	0.1%
Domestic Travel (Out-of-state)	325	0.4%
Cruise Ship Travel	14	<0.1%
Long-Term Care Facility (Resident) <sup>1</sup>	1,532	1.8%
County Jail (Inmate)	732	0.8%
State Jail (Inmate-- <a href="#">TDCL COVID-19 Medical Action Center</a> ) <sup>2</sup>	96	0.1%
Federal Prison (Inmate) <sup>3</sup>	1,396	1.6%
Homeless Shelter	90	0.1%
Meat/Food Processing Facilities	591	0.7%
Close contact or Presumed Community Transmission <sup>4</sup>	82,481	94.4%

<sup>1</sup> Does not include over 565 COVID-19 cases reported in LTCF staff members employed by the > 112 affected LTCFs.

<sup>2</sup> Texas Department of Criminal Justice cases are under the jurisdiction of the Texas Department of State Health Services for investigation

<sup>3</sup> Federal prison cases are under the jurisdiction of the federal government for investigation, but are now included in total County cases

<sup>4</sup> Includes: household transmission and cases with no other exposure risk factors identified

**Table 10. Summary of weekly COVID-19 hospitalizations and deaths from Dallas County hospitals, Vital Statistics and Medical Examiner’s office<sup>1-4</sup>**

Week Ending	07/25	08/01	08/08	08/15	08/22	08/29	09/05	09/12	09/19	09/26	10/03	9/08/19– Present
CDC Week	30	31	32	33	34	35	36	37	38	39	40	
COVID-19 hospitalizations <sup>1</sup>	448	370	263	233	174	175	151	138	113	95	86	8,097*
COVID-19 ICU admissions <sup>1</sup>	91	107	68	61	42	35	25	28	20	17	8	1,920*
Probable COVID-19-associated deaths <sup>2</sup>	3	2	3	4	0	0	0	0	0	1	0	13*
Confirmed COVID-19-associated deaths <sup>3</sup>	100	79	59	56	41	36	21	17	12	9	8	1,057*

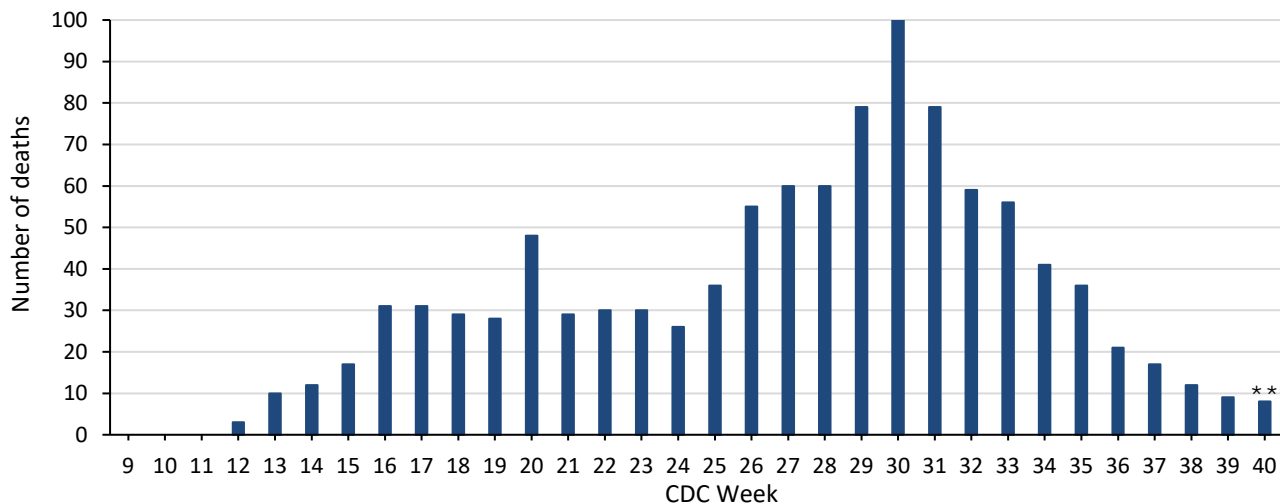
\* All data are preliminary and subject to change as cases continue to be received and investigated.

<sup>1</sup> Reflects all COVID-19-associated hospitalizations and intensive care unit admissions reported from area hospitals within Dallas County by week of admission. Hospitalizations are inclusive of ICU admissions. Data are preliminary and include reports received as of 8:00 pm yesterday.

<sup>2</sup> Probable COVID-19 deaths as defined by CSTE interim case classification criteria--meeting vital records criteria without molecular lab test confirmation.

<sup>3</sup> Confirmed COVID-19 deaths as defined by a positive molecular amplification detection test and any of the following: (1) death certificate denotation, (2) medical record documentation of compatible symptoms and clear progression from illness to death, or (3) determination by the County Medical Examiner’s office (ME) of no alternate cause of death. Does not include possible COVID-19 -associated deaths with pending determination of cause of death.

**Figure 8. Confirmed COVID-19-associated deaths by week of death, Dallas County: March 2019 through week ending October 3, 2020 (CDC Week 40)\***

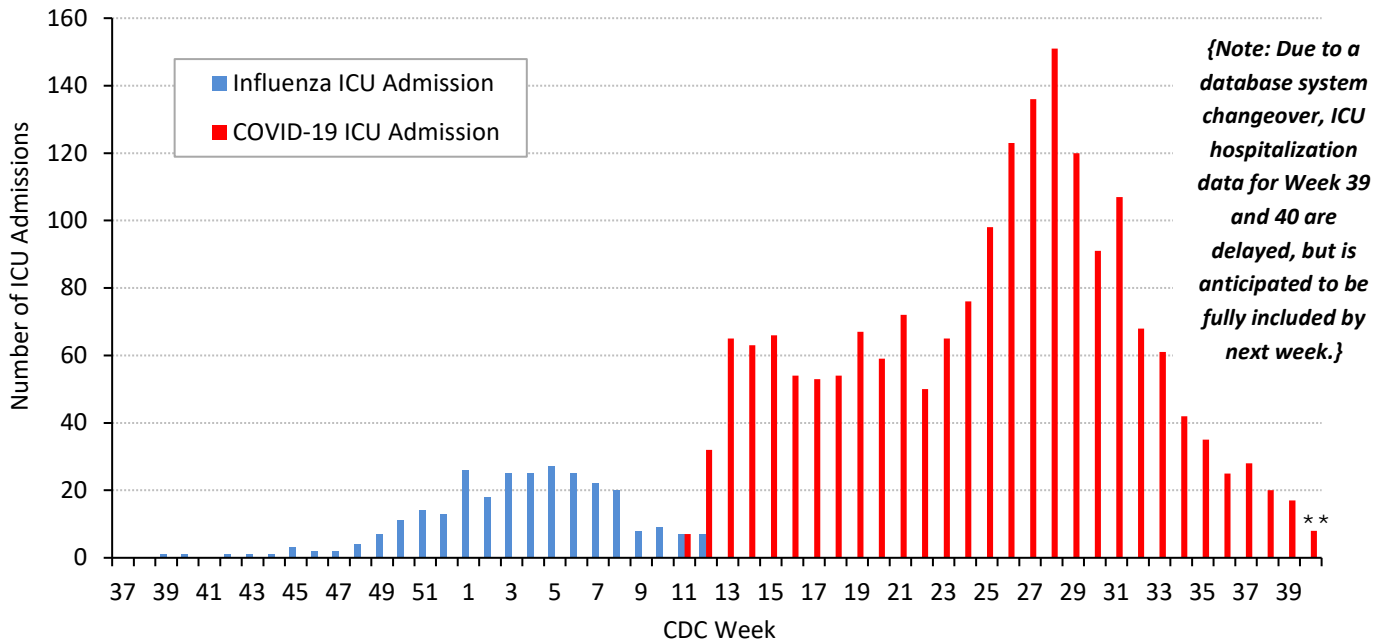


\* Dallas County residents diagnosed with confirmed COVID-19 by molecular amplification detection testing.

\*\* All data are preliminary and subject to change as cases continue to be received and investigated.

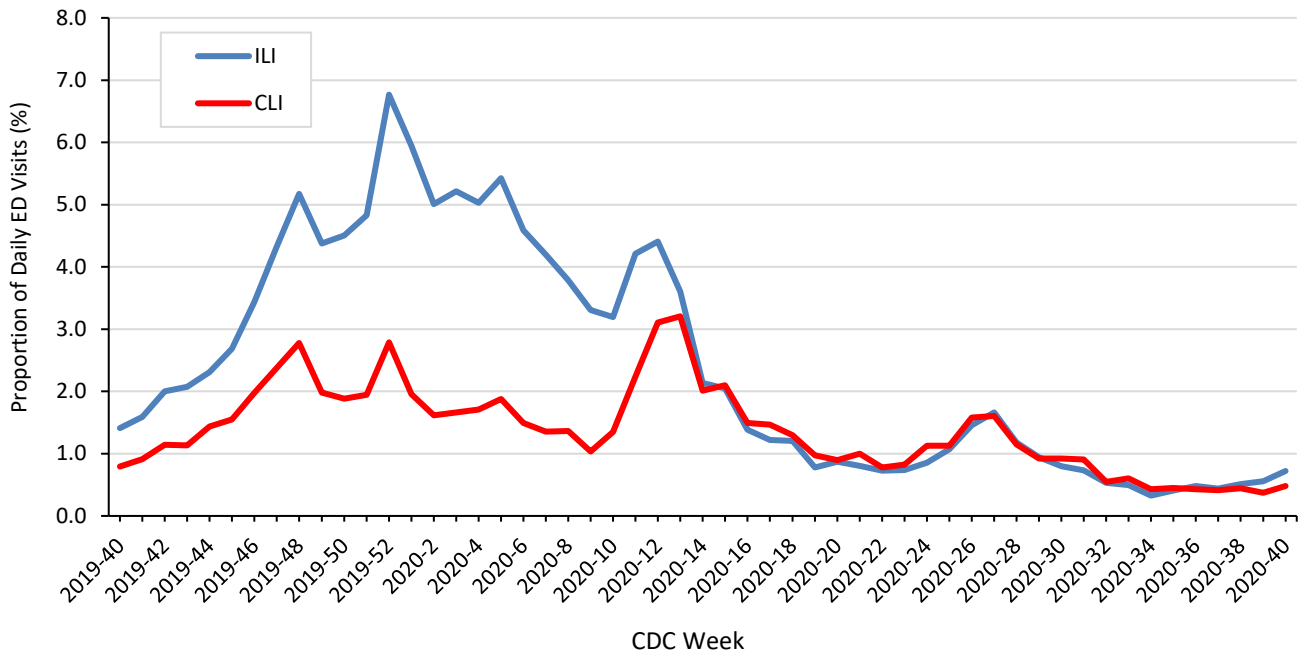


**Figure 9. Intensive care unit hospitalizations for influenza and COVID-19 by week of admission, Dallas County: September 2019 through week ending October 3, 2020 (CDC Week 40)\***



\* New ICU admissions of Dallas County residents reported with confirmed COVID-19 by molecular amplification detection testing as of 8:00 pm yesterday. Hospitalized patients with self-reported residence from outside of Dallas County are not included.  
 \*\* All data are preliminary and subject to change as cases continue to be received and investigated.

**Figure 10. Syndromic surveillance of emergency department visits for COVID-like illness (CLI)\* and Influenza-like illness (ILI)\*\*, Dallas County: September 29, 2019 – October 3, 2020 (CDC Week 40)**



ESSENCE Data is from 18 hospital emergency departments voluntarily reporting numbers of persons presenting with self-reported chief complaints.  
 \* CLI is defined as chief complaint of fever and cough or shortness of breath or difficulty breathing.  
 \*\*ILI is defined as chief complaint of fever and cough or sore throat or mention of influenza.

**Table 11. Cumulative COVID-19 cases by city of residence within Dallas County as of October 13, 2020**

(e.g. Does not include cases who reside in portions of cities which are not within Dallas County.)

City of Residence	Confirmed Cases (N=87,381)	Probable Cases (N=4,374)	Total Confirmed + Probable Cases reported in 14 day period from 9/20 – 10/3*	Estimated COVID-19 Prevalence (%) in 14 day period from 9/20 – 10/3** (lower – upper estimate range)
Addison	372	21	37	0.68 - 2.28
Balch Springs	951	47	53	0.64 - 2.12
Carrollton	1,465	68	86	0.45 - 1.51
Cedar Hill	1,410	61	79	0.50 - 1.67
Cockrell Hill	191	3	12	0.87 - 2.89
Combine	11	0	0	N/A
Coppell	477	117	50	0.37 - 1.23
Dallas	45,379	2,183	2,483	0.59 - 1.97
DeSoto	1,611	22	108	0.61 - 2.04
Duncanville	1,400	47	82	0.63 - 2.12
Farmers Branch	803	58	59	0.37 - 1.23
Ferris	5	0	0	N/A
Garland	7,923	70	372	0.47 - 1.55
Glenn Heights	200	9	6	0.18 - 0.59
Grand Prairie	4,420	472	313	0.70 - 2.35
Highland Park	106	37	23	0.76 - 2.53
Hutchins	247	2	8	0.41 - 1.36
Irving	8,537	300	520	0.65 - 2.17
Lancaster	1,330	29	72	0.55 - 1.84
Lewisville	1	1	0	N/A
Mesquite	4,914	355	295	0.63 - 2.10
Ovilla	1	0	0	N/A
Richardson	1,525	123	137	0.48 - 1.59
Rowlett	1,176	25	93	0.47 - 1.57
Sachse	251	5	25	0.42 - 1.40
Seagoville	1,995	30	18	0.32 - 1.07
Sunnyvale	155	25	11	0.48 - 1.61
University Park	295	259	83	1.00 - 3.32
Wilmer	220	4	4	0.25 - 0.84
Wylie	10	1	2	0.97 - 3.23
<b>Dallas County</b>	<b>87,381</b>	<b>4,374</b>	<b>5,031</b>	<b>0.57 - 1.91</b>

\*Sum of confirmed and probable cases by date of test collection, for 14 day timeframe from: September 20– October 3, 2020. Most recent 2 weeks not included due to average reporting lag of 9.0 days. Case numbers are only for portions of each city which are within Dallas County.

\*\*Estimated COVID-19 prevalence rate ranges calculated based on: Fox SJ, Lachmann M, Meyers LA. "COVID-19 Campus Introduction Risks for School Reopenings" presented to the TEA on July 22, 2020. Denominator populations are only for portions of each city which are within Dallas County. [https://sites.cns.utexas.edu/sites/default/files/cid/files/covid-19\\_school\\_introduction\\_risks.pdf?m=1595468503](https://sites.cns.utexas.edu/sites/default/files/cid/files/covid-19_school_introduction_risks.pdf?m=1595468503)

**Table 12. Summary of weekly COVID-19 confirmed and probable cases and deaths, Dallas County (CDC Weeks 36 - 40)**

CDC Week	Week Ending	Total Confirmed and Probable Cases	Total School-Aged Cases (5 to 17 years)	Daily Average New Confirmed and Probable Cases*	Daily Average New Confirmed and Probable Deaths**	Percentage of Tests Positive for SARS-CoV-2***
36	9/5/2020	2,060	152	294	3	10.8%
37	9/12/2020	1,862	184	266	2	10.0%
38	9/19/2020	2,216	237	317	2	11.9%
39	9/26/2020	2,421	255	346	1	10.7%
40	10/3/2020	2,615	283	374	1	10.0%

\* For 7-day time period for respective CDC week by date of test collection;  
 \*\* For 7-day time period for respective CDC week by date of death  
 \*\*\* See Table 6 for historical data

***Many Thanks to:***

Our area hospitals and healthcare providers for reporting lab-confirmed COVID-19 cases

Our DCHHS Case and Contact Investigations Team volunteers from:

Dallas County Medical Society

UT Southwestern Medical School

Texas A&M College of Medicine

UTHealth School of Public Health

Retired School Nurses

New COVID-19 cases are reported as a daily aggregate, with this cumulative summary updated Tuesdays and Fridays.

DCHHS COVID-19 Summaries and Case Report Form are accessible at:

<https://www.dallascounty.org/departments/dchhs/2019-novel-coronavirus.php>

**DCHHS Acute Communicable Disease Epidemiology Division:** COVID-19@dallascounty.org