

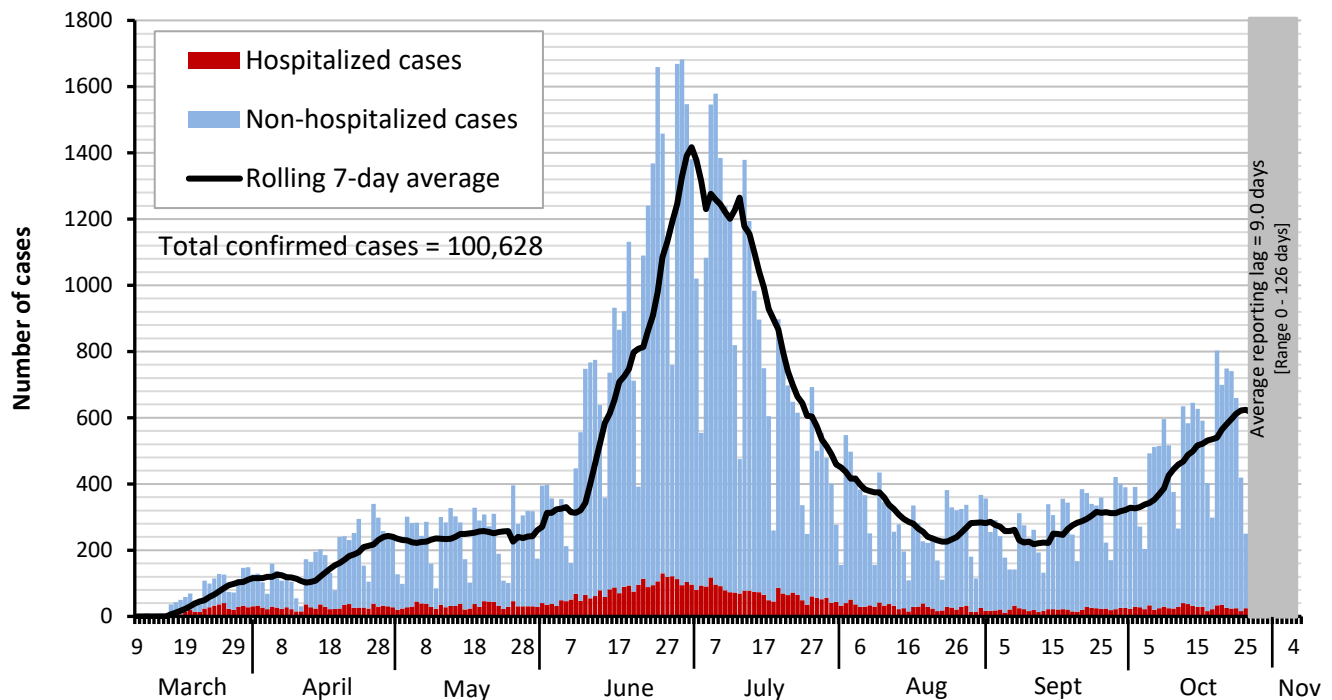


Dallas County Health and Human Services 2019 Novel Coronavirus (COVID-19) Summary

November 6, 2020

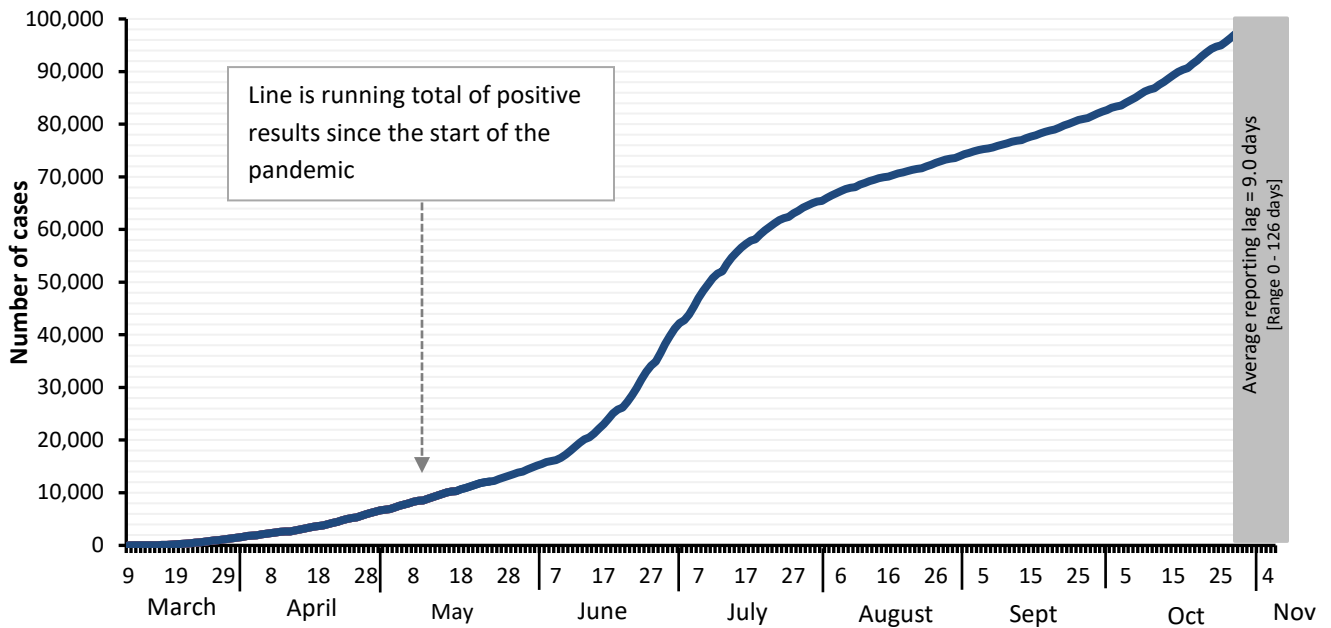
- As of November 6, 2020, DCHHS is reporting an additional 867 confirmed and 402 probable cases of 2019 novel coronavirus (COVID-19). The cumulative total number of confirmed cases in Dallas County is 100,628 including 1,127 confirmed deaths. The total probable case count is 8,003 including 18 probable deaths from COVID-19.
- The provisional 7-day average daily new confirmed and probable cases (by date of test collection) for CDC week 44 (week ending 10/31/2020) was 740, which is a rate of 28.4 daily new cases per 100,000 residents.
- The percentage of respiratory specimens testing positive for SARS-CoV-2 remains high, with 14.9% of symptomatic patients presenting to area hospitals testing positive in week 44 (week ending 10/31/2020).
- A provisional total of 577 confirmed and probable COVID-19 cases were diagnosed in school-aged children (5 to 17 years) during CDC week 44, an almost two-fold increase from the numbers of children diagnosed in this age group 4 weeks earlier (CDC week ending 10/3/2020).
- Of the 9,160 cases requiring hospitalization to date, almost three-quarters (69%) have been under 65 years of age, and over half reported having a chronic health condition. Diabetes has been an underlying high-risk health condition reported in about a third of all hospitalized patients with COVID-19.
- Twenty-four percent (24%) of deaths have been associated with long-term care facilities.

Figure 1. Confirmed COVID-19 positive cases by date of test collection, Dallas County: March 10 – November 6, 2020¹⁻⁴



1. Data received as of 8:00 pm yesterday, for residents of Dallas County tested with known specimen collection dates. This does include delayed results from previous days. All data are preliminary and subject to change as cases continue to be investigated.
2. Data are incomplete for the most recent dates. Test results may be reported to DCHHS several days after the result. The reporting lag is calculated as time from specimen collection to receipt of test results. The average reporting lag is 9.0 days, with a range from 0 – 126 days.
3. This summary graph includes only confirmed cases based on molecular amplification detection test results.
4. Bars are the number of positive molecular amplification detection tests which were collected that day.
5. Rolling 7-day average is the average number of new confirmed COVID-19 cases collected 7 days prior to value.

Figure 2. Cumulative confirmed COVID-19 cases by date of test collection, Dallas County: March 10 – November 6, 2020¹⁻²



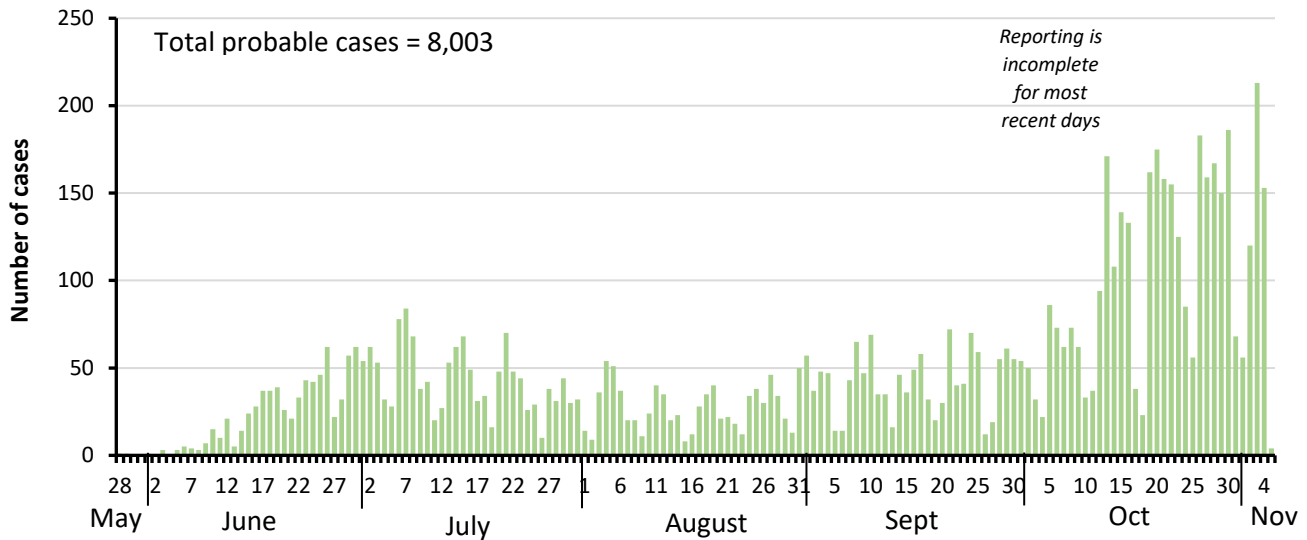
1. Data received as of 8:00 pm yesterday, for residents of Dallas County tested with known specimen collection dates. This does include delayed results from previous days. All data are preliminary and subject to change as cases continue to be investigated.
2. Data are incomplete for the most recent dates. Test results may be reported to DCHHS several days after the result. The reporting lag is calculated as time from specimen collection to receipt of test results. The average reporting lag is 9.0 days, with a range from 0 – 126 days.

Table 1. Characteristics of cumulative confirmed COVID-19 cases, Dallas County: March 9 – November 6, 2020

		Number	% of Total Cases ⁺
Total Cases in Dallas County residents		N = 100,658	100%
Age Group (years)	0 to 17	10,658	11%
	18 to 40	46,372	46%
	41 to 64	34,295	34%
	≥65	9,187	9%
Sex	Female	51,002	51%
	Male	48,536	49%
Not Hospitalized (Includes: Outpatient, urgent care, drive-through, ED)		91,648	91%
Ever Hospitalized		9,160	9%

⁺ Percentages calculated among cases with known age/sex

Figure 3. Probable COVID-19 cases by date of test collection, Dallas County: May 28 – November 6, 2020 ¹⁻⁵



1. Data received as of 8:00 pm yesterday, for residents of Dallas County tested with known specimen collection dates. This does include delayed results from previous days. All data are preliminary and subject to change as cases continue to be investigated.
2. Data are incomplete for the most recent dates. Test results may be reported to DCHHS several days after the result. The reporting lag is calculated as time from specimen collection to receipt of test results.
3. This summary graph includes only probable cases which meet below CDC case definition. Probable cases are reported separately from confirmed cases.

Table 2. Characteristics of cumulative probable COVID-19 cases, Dallas County: May 28 – November 6, 2020

		Number	% of Total Cases*
Total Probable Cases in Dallas County residents		N = 8,003	100%
Age Group (years)	0 to 17	2,003	25%
	18 to 40	3,651	46%
	41 to 64	1,906	24%
	≥65	432	5%
Sex	Female	3,678	51%
	Male	3,500	49%

* Percentages calculated among cases with known age/sex

CDC Definition of a COVID-19 case:

"A COVID-19 case includes [confirmed and probable cases and deaths](#). This change was made to reflect an interim [COVID-19 position](#) statement issued by the Council of State and Territorial Epidemiologists on April 5, 2020. The position statement included a case definition and made COVID-19 a [nationally notifiable disease](#)."

CDC Definition of a COVID-19 probable case:

"A [probable case or death](#) is defined as:

- A person meeting [clinical criteria](#) **AND** [epidemiologic evidence](#) with no confirmatory laboratory testing performed for COVID-19;
- A person meeting [presumptive laboratory evidence](#) **AND** either [clinical criteria](#) **OR** [epidemiologic evidence](#);
- A person meeting [vital records criteria](#) with no confirmatory laboratory testing performed for COVID-19."

*Centers for Disease Control and Prevention FAQ: COVID-19 Data and Surveillance:

<https://www.cdc.gov/coronavirus/2019-ncov/covid-data/faq-surveillance.html>

**See also Texas Department of State Health Services (DSHS) Case Definition:

<https://www.dshs.state.tx.us/coronavirus/docs/DSHS-COVID19CaseDefinitionandInvestigationPrioritizationGuidance.pdf>

Table 3. Number of confirmed COVID-19 cases by age group and month of collection, Dallas County

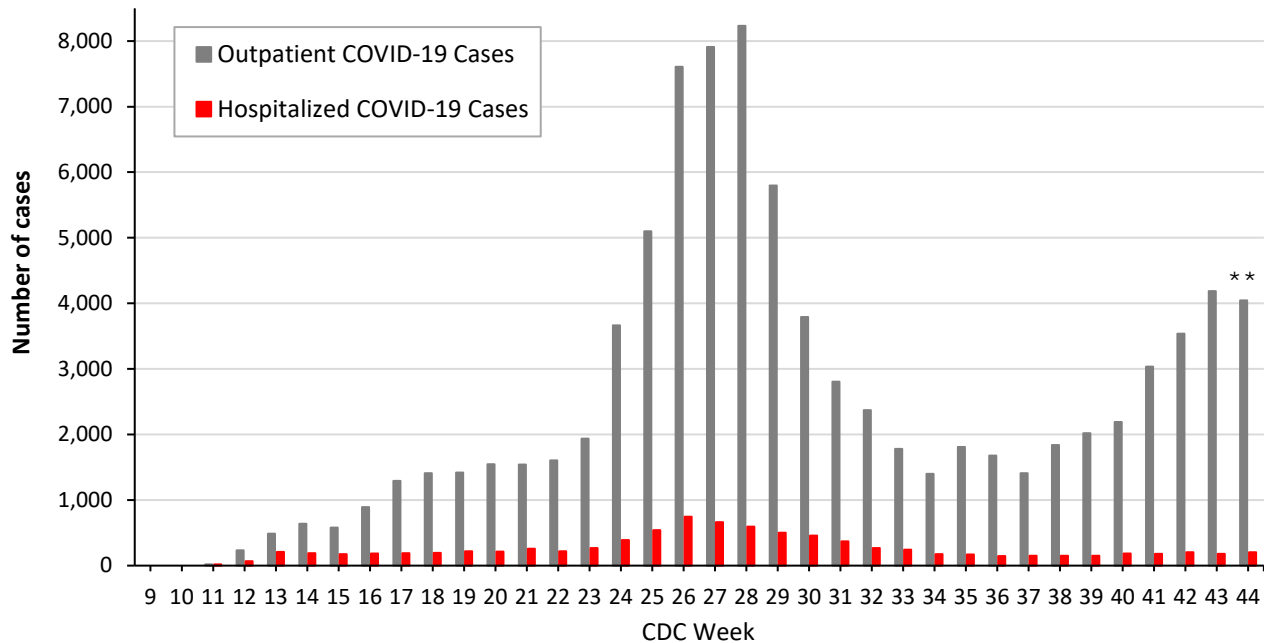
Age Group (in years)	0 to 17		18 to 22		23 to 39		40 to 64		≥65	
Month of Diagnosis	N	%	N	%	N	%	N	%	N	%
March	27	2%	52	4%	423	31%	640	47%	221	16%
April	286	6%	287	6%	1,585	31%	2,262	45%	640	13%
May	736	10%	609	8%	2,458	32%	2,997	40%	774	10%
June	2,292	9%	2,234	9%	10,046	41%	7,957	33%	1,698	7%
July	3,085	12%	2,405	9%	9,092	34%	9,804	37%	2,352	9%
August	1,002	11%	987	11%	2,851	32%	3,169	35%	936	10%
September	926	11%	1,057	13%	2,882	34%	2,870	34%	687	8%
October	2,090	13%	1,415	9%	5,545	34%	5,784	35%	1,675	10%
November (thru 11/6)	128	11%	85	7%	416	35%	419	35%	140	12%

Table 4. Confirmed and Probable School-Aged Cases (5 to 17 years) by CDC week of test collection

City of Residence	Week 39 (ending 9/26)	Week 40 (ending 10/3)	Week 41 (ending 10/10)	Week 42 (ending 10/17)	Week 43 (ending 10/24)	Week 44 (ending 10/31)
Addison	2	1	1	0	1	0
Balch Springs	3	5	5	5	4	19
Carrollton	7	4	9	18	13	7
Cedar Hill	1	5	11	13	13	12
Cockrell Hill	0	0	0	0	0	1
Combine	0	0	0	0	0	0
Coppell	5	2	3	13	3	10
Dallas	103	134	214	251	335	270
DeSoto	5	4	9	13	24	10
Duncanville	3	6	5	6	2	4
Farmers Branch	5	4	5	6	2	4
Ferris	0	0	0	0	0	0
Garland	27	23	32	44	50	36
Glenn Heights	0	0	1	1	4	2
Grand Prairie	10	19	35	32	60	32
Highland Park	2	2	2	2	0	0
Hutchins	0	0	3	0	2	1
Irving	27	26	45	55	49	40
Lancaster	4	5	7	7	6	7
Lewisville	0	0	0	0	0	0
Mesquite	27	26	43	41	64	56
Ovilla	0	0	0	0	0	0
Richardson	12	8	8	14	18	23
Rowlett	8	13	9	0	8	16
Sachse	2	2	1	2	1	2
Seagoville	2	8	2	3	6	10
Sunnyvale	2	0	1	0	1	1
University Park	5	7	6	4	2	4
Wilmer	0	1	2	1	1	3
Wylie	2	0	1	0	0	0
Unknown	0	0	0	0	0	0
Total	264	305	459	532	678	577

Includes only children ages 5 to 17 years of age residing in Dallas County, with positive molecular or antigen test results received as of 8:00 pm yesterday. Does not include verbal reports of test results that are not accompanied by documentation of test results from laboratory or testing facility. All data are preliminary and subject to change as cases continue to be investigated.

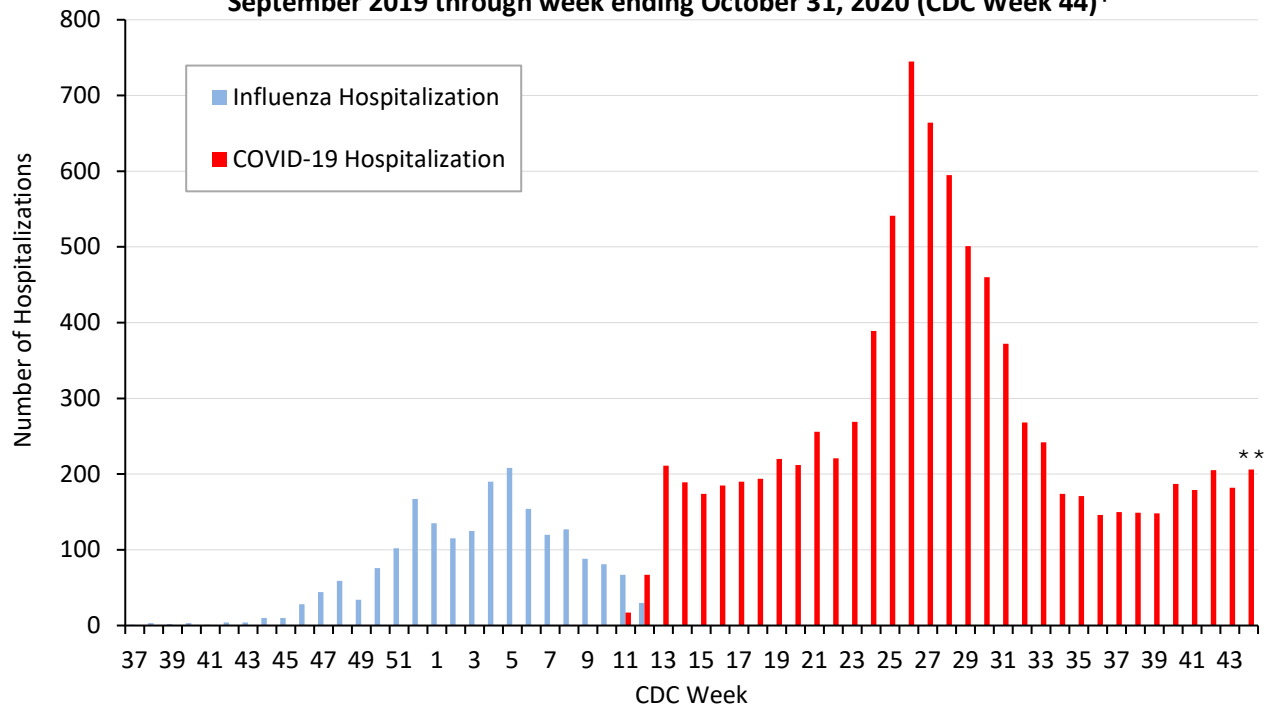
Figure 5. Non-hospitalized and hospitalized confirmed COVID-19 cases by week of test collection, Dallas County: September 2019 through week ending October 31, 2020 (CDC Week 44)*



* Non-hospitalized includes all patients not admitted to acute-care hospitals (e.g. outpatient, urgent care, drive-through, ED-only, LTCF) and diagnosed with confirmed COVID-19. All data are preliminary and subject to change as cases continue to be received and investigated.

** Data are incomplete for the most recent dates. Test results may be reported to DCHHS several days after the result. The reporting lag is calculated as time from specimen collection to receipt of molecular amplification detection test results.

Figure 6. Influenza and confirmed COVID-19 hospitalizations by week of admission, Dallas County: September 2019 through week ending October 31, 2020 (CDC Week 44)*



* Hospitalized Dallas County residents diagnosed with confirmed COVID-19 by molecular amplification detection testing. All data are preliminary and subject to change as cases continue to be received and investigated.

** Data are incomplete for the most recent dates. Test results may be reported to DCHHS several days after the result. The reporting lag is calculated as time from specimen collection to receipt of test results.

Table 5. Characteristics of cumulative hospitalized confirmed COVID-19 cases, Dallas County: March 10 – November 6, 2020

		Hospitalized Cases	%
<i>Ever Hospitalized</i>		N = 9,160	9% of Total Cases
Admitted to Intensive Care Unit		2,146	24%
Mechanical Ventilation		1,134	13%
Sex	Male	4,362	52%
	Female	4,798	48%
Age Group (years)	0-17	231	3%
	18-40	2,055	22%
	41-64	4,000	44%
	≥65	2,874	31%
Presence of ≥1 high risk condition		<i>{Note: Due to a database system changeover on 11/4/20, data reflecting underlying medical conditions is not being included in this week's report, but is anticipated to be fully included again next week.}</i>	
Diabetes			
Lung Disease (e.g. COPD, asthma)			
Heart Disease (e.g. CHF)			
Kidney Disease (e.g. ESRD, dialysis)			
Cancer, Immune-compromise			
Obesity			
Race/ Ethnicity	White	1,560	17%*
	Hispanic	4,504	49%*
	Black	2,042	22%*
	Other	330	4%*
	Non-reported/ Unknown	724	8%

* Percentages can also be calculated to exclude cases for which race/ethnicity was not reported

Table 6. Characteristics of cumulative confirmed COVID-19 deaths, Dallas County: March 10 – November 6, 2020

<i>Death classified as confirmed if decedent was a Dallas County resident with a positive molecular test. Data are obtained from ME office, hospitals, and vital statistics.</i>		Confirmed Deaths	% ¹
		N = 1,127	1.2% of Total Cases
Sex	Male	710	63%
	Female	417	37%
Age Group (years)	0-17	2	<1%
	18-40	50	4%
	41-64	371	33%
	≥65	704	62%
Resident of a Long-Term Care Facility		268	24%
Presence of ≥1 high risk condition		<i>{Note: Due to a database system changeover on 11/4, this data is not included in this week's report.}</i>	
Diabetes			
Race/ Ethnicity	White	271	25% (29% of population) ²
	Hispanic	525	47% (41% of population) ²
	Black	276	25% (24% of population) ²
	Asian	33	3% (7% of population) ²

¹ Percentages calculated among those with known underlying health conditions or race/ethnicity as reported by medical provider

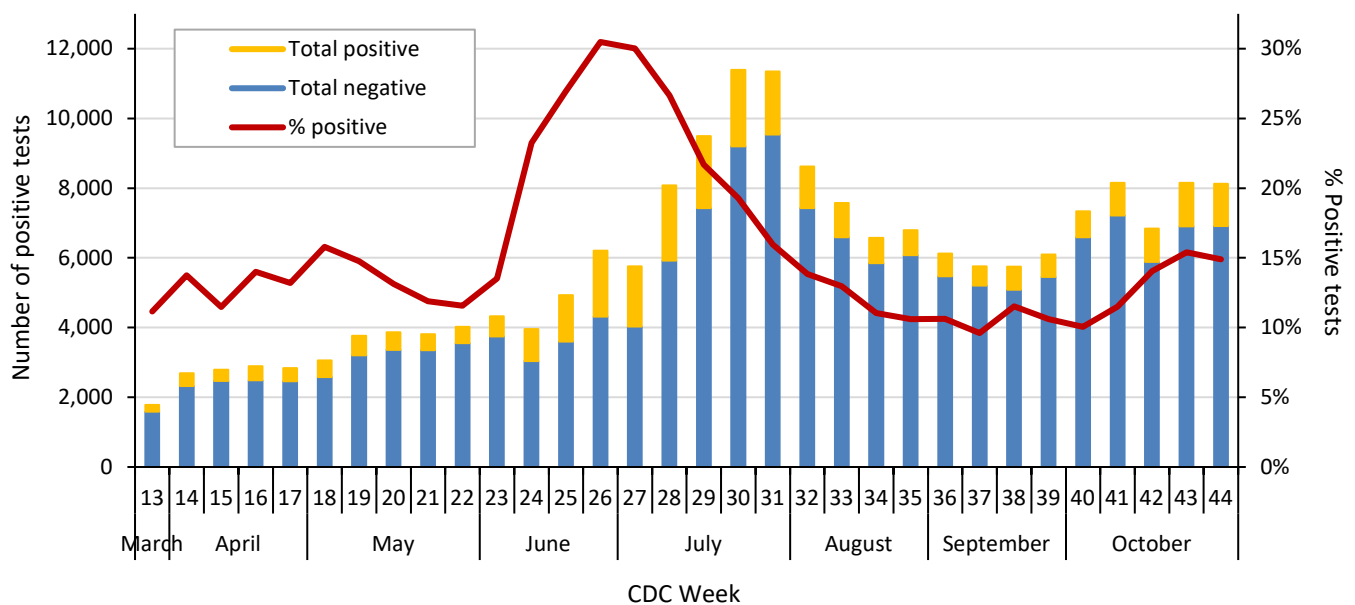
² 2019 U.S. Census population estimates for Dallas County

Table 7. Respiratory virus testing by North Texas hospitals participating in public health surveillance programs: August 23 – October 31, 2020 (CDC Weeks 35-44)¹⁻²

Week Ending		8/29	9/5	9/12	9/19	9/26	10/3	10/10	10/17	10/24	10/31
SARS-CoV-2 Novel Coronavirus	Positive	720	650	553	662	647	737	936	961	1,255	1,210
	Total Tests	6,793	6,119	5,757	5,748	6,098	7,331	8,148	6,841	8,154	8,125
	% Positive	10.6%	10.6%	9.6%	11.5%	10.6%	10.1%	11.5%	14.0%	15.4%	14.9%
Influenza	Positive	0	0	0	0	0	0	0	0	2	0
	Total Tests	136	199	185	190	215	231	91	105	308	302
	% Positive	0%	0%	0%	0%	0%	0%	0%	0%	0.6%	0%
Seasonal (non-SARS-2) Coronavirus	Positive	0	0	0	0	0	0	0	0	0	0
	Total Tests	45	62	71	37	72	60	69	83	84	49
	% Positive	0%	0%	0%	0%	0%	0%	0%	0%	0%	0%
Adenovirus (respiratory)	Positive	1	1	2	0	3	2	1	4	2	2
	Total Tests	128	178	158	136	168	162	69	83	193	164
	% Positive	0.8%	0.6%	1.3%	0%	1.8%	1.2%	1.4%	4.8%	1.0%	1.2%
Metapneumo- virus	Positive	0	0	0	0	0	0	0	0	0	0
	Total Tests	128	178	158	136	168	162	69	83	193	164
	% Positive	0%	0%	0%	0%	0%	0%	0%	0%	0%	0%
Rhinovirus/ Enterovirus	Positive	16	16	21	21	26	23	21	36	48	37
	Total Tests	128	178	158	136	168	162	69	83	193	164
	% Positive	12.5%	9.0%	13.3%	15.4%	15.5%	14.2%	30.4%	43.4%	24.9%	22.6%
RSV	Positive	0	0	0	0	0	0	0	0	0	0
	Total Tests	113	187	164	147	189	185	91	105	220	199
	% Positive	0%	0%	0%	0%	0%	0%	0%	0%	0%	0%

Data sources: National Respiratory and Enteric Virus Surveillance System and an additional subset of hospitals voluntarily reporting surveillance PCR data directly to DCHHS. Testing denominators include out-of-county patients and testing performed only through hospitals in Dallas County. (Does not include FEMA drive-thru clinics). Data are incomplete for the most recent dates.

Figure 7. SARS-CoV-2 positive PCR tests reported to DCHHS by hospital laboratories: March 22 – October 31, 2020 (CDC Weeks 26-44)¹⁻²



1. Data received as of 8:00 pm yesterday. All data are preliminary and subject to change as cases continue to be received and investigated.
2. Data are incomplete for the most recent dates. Test results may be reported to DCHHS several days after the result.

Table 8. Summary of weekly COVID-19 hospitalizations and deaths from Dallas County hospitals, Vital Statistics and Medical Examiner’s office ¹⁻⁴

Week Ending	08/29	09/05	09/12	09/19	09/26	10/03	10/10	10/17	10/24	10/31	09/08/19–Present
CDC Week	35	36	37	38	39	40	41	42	43	44	Present
COVID-19 hospitalizations ¹	171	146	150	149	148	187	179	205	182	206	9,160*
COVID-19 ICU admissions ¹	37	31	32	26	33	38	44	36	30	36	2,146*
Probable COVID-19-associated deaths ²	0	0	0	1	0	0	0	0	2	2	18*
Confirmed COVID-19-associated deaths ³	39	22	17	15	13	13	15	15	9	17	1,127*

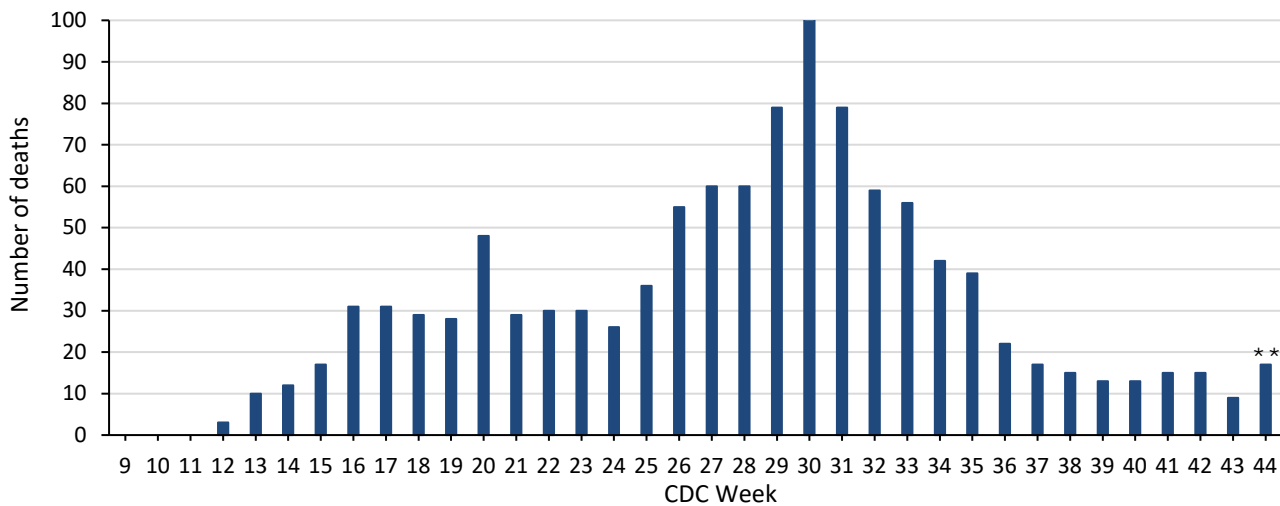
* All data are preliminary and subject to change as cases continue to be received and investigated.

¹ Reflects all COVID-19-associated hospitalizations and intensive care unit admissions reported from area hospitals within Dallas County by week of admission. Hospitalizations are inclusive of ICU admissions. Data are preliminary and include reports received as of 8:00 pm yesterday.

² Probable COVID-19 deaths as defined by CSTE interim case classification criteria--meeting vital records criteria without molecular lab test confirmation.

³ Confirmed COVID-19 deaths as defined by a positive molecular amplification detection test *and* any of the following: (1) death certificate denotation, (2) medical record documentation of compatible symptoms and clear progression from illness to death, or (3) determination by the County Medical Examiner’s office (ME) of no alternate cause of death. Does not include possible COVID-19-associated deaths with pending determination of cause of death.

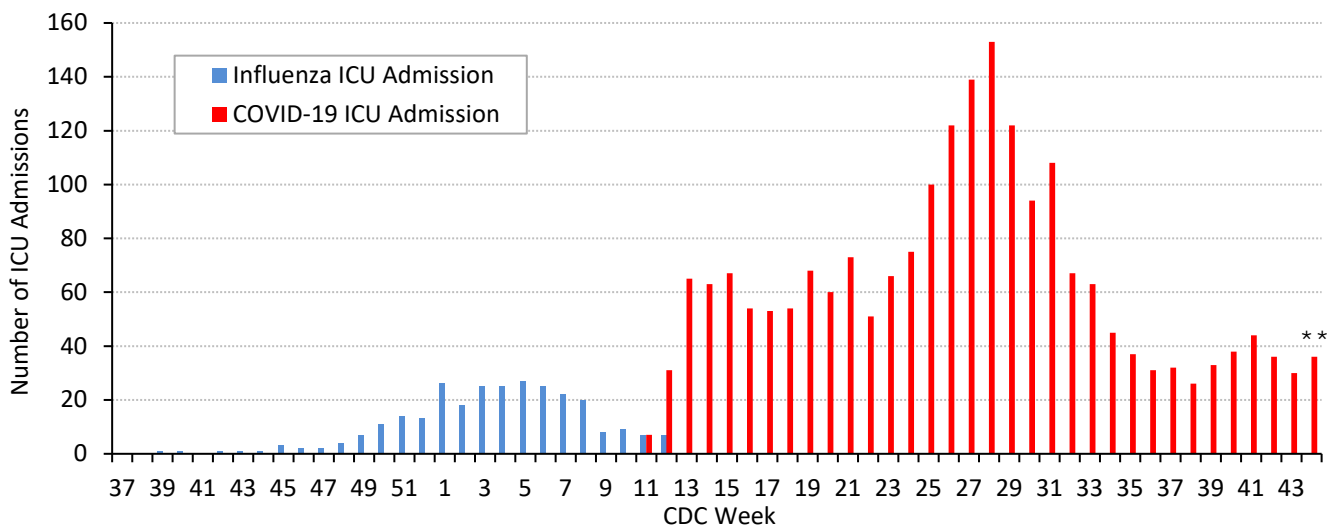
Figure 8. Confirmed COVID-19-associated deaths by week of death, Dallas County: March 2019 through week ending October 31, 2020 (CDC Week 44)*



* Dallas County residents diagnosed with confirmed COVID-19 by molecular amplification detection testing.

** All data are preliminary and subject to change as cases continue to be received and investigated.

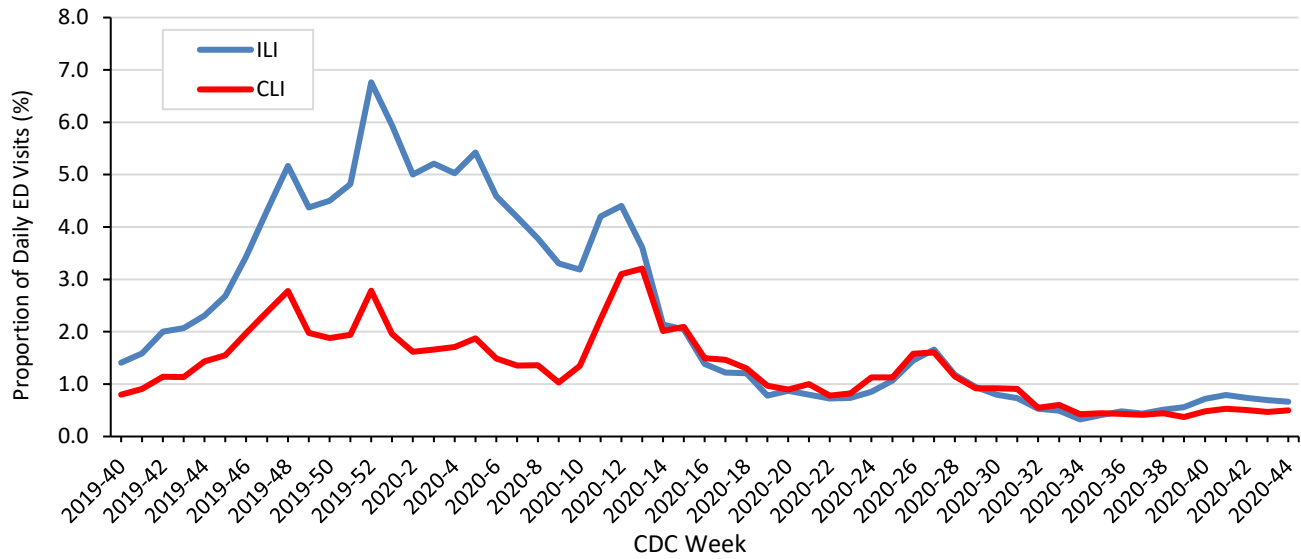
Figure 9. Intensive care unit hospitalizations for influenza and COVID-19 by week of admission, Dallas County: September 2019 through week ending October 31, 2020 (CDC Week 44)*



* New ICU admissions of Dallas County residents reported with confirmed COVID-19 by molecular amplification detection testing as of 8:00 pm yesterday. Hospitalized patients with self-reported residence from outside of Dallas County are not included.

** All data are preliminary and subject to change as cases continue to be received and investigated.

Figure 10. Syndromic surveillance of emergency department visits for COVID-like illness (CLI)* and Influenza-like illness (ILI), Dallas County: September 29, 2019 – October 31, 2020 (CDC Week 44)**



ESSENCE Data is from 18 hospital emergency departments voluntarily reporting numbers of persons presenting with self-reported chief complaints.
 * CLI is defined as chief complaint of fever and cough or shortness of breath or difficulty breathing.
 **ILI is defined as chief complaint of fever and cough or sore throat or mention of influenza.

Table 9. Summary of weekly COVID-19 confirmed and probable cases and deaths, Dallas County (CDC Weeks 29 - 44)

CDC Week	Week Ending	Total Confirmed and Probable Cases	Total School-Aged Cases (5 to 17 years)	Daily Average New Confirmed and Probable Cases*	Daily Average New Confirmed and Probable Deaths**	Percentage of Tests Positive for SARS-CoV-2***
29	7/18/2020	6,608	665	944	11	21.7%
30	7/25/2020	4,521	478	646	15	19.3%
31	8/1/2020	3,352	416	479	12	15.9%
32	8/8/2020	2,852	305	407	9	13.8%
33	8/15/2020	2,164	177	309	9	13.0%
34	8/22/2020	1,757	183	251	6	11.0%
35	8/29/2020	2,198	183	314	6	10.6%
36	9/5/2020	2,070	156	296	3	10.6%
37	9/12/2020	1,870	189	267	2	9.6%
38	9/19/2020	2,237	237	320	2	11.5%
39	9/26/2020	2,505	264	358	2	10.6%
40	10/3/2020	2,689	305	384	2	10.1%
41	10/10/2020	3,624	459	518	2	11.5%
42	10/17/2020	4,469	532	638	2	14.0%
43	10/24/2020	5,252	678	750	2	15.4%
44	10/31/2020	5,179	577	740	3	14.9%

* For 7-day time period for respective CDC week by date of test collection
 ** For 7-day time period for respective CDC week by date of death
 *** See Table 6 for historical data

Table 10. Cumulative COVID-19 cases by city of residence within Dallas County as of November 6, 2020*(e.g. Does not include cases who reside in portions of cities which are not within Dallas County.)*

<i>City of Residence</i>	Confirmed Cases (N=100,628)	Probable Cases (N=8,003)	Total Confirmed + Probable Cases reported in 14 day period from 10/11 – 10/24*	Estimated COVID-19 Prevalence (%) in 14 day period from 10/11 – 10/24** (lower – upper estimate range)
Addison	428	34	32	0.59 - 1.97
Balch Springs	1,099	82	91	1.09 - 3.64
Carrollton	1,729	130	184	0.97 - 3.24
Cedar Hill	1,692	111	193	1.22 - 4.07
Cockrell Hill	219	15	24	1.73 - 5.78
Combine	3	1	1	0.34 - 1.13
Coppell	621	175	92	0.68 - 2.27
Dallas	51,573	4,101	4,677	1.11 - 3.71
DeSoto	1,869	61	196	1.11 - 3.70
Duncanville	1,683	117	199	1.54 - 5.14
Farmers Branch	987	105	135	0.84 - 2.80
Ferris	6	0	1	N/A
Garland	8,963	258	813	1.02 - 3.39
Glenn Heights	232	14	23	0.67 - 2.24
Grand Prairie	5,180	798	664	1.49 - 4.98
Highland Park	123	55	17	0.56 - 1.87
Hutchins	272	4	12	0.61 - 2.05
Irving	9,967	555	962	1.20 - 4.01
Lancaster	1,600	75	165	1.26 - 4.21
Lewisville	1	1	0	N/A
Mesquite	5,822	564	614	1.31 - 4.36
Ovilla	1	0	0	N/A
Richardson	1,909	199	241	0.84 - 2.79
Rowlett	1,405	60	146	0.74 - 2.47
Sachse	325	15	39	0.65 - 2.18
Seagoville	2,125	58	79	1.41 - 4.69
Sunnyvale	176	36	21	0.92 - 3.07
University Park	360	364	80	0.96 - 3.20
Wilmer	246	10	19	1.19 - 3.98
Wylie	12	5	1	0.48 - 1.62
Dallas County	100,628	8,003	9,721	1.11 – 3.69

*Sum of confirmed and probable cases by date of test collection, for 14 day timeframe from: October 11 – October 24, 2020. Most recent 2 weeks not included due to average reporting lag of 9.0 days. Case numbers are only for portions of each city which are within Dallas County.

**Estimated COVID-19 prevalence rate ranges calculated based on: Fox SJ, Lachmann M, Meyers LA. "COVID-19 Campus Introduction Risks for School Reopenings" presented to the TEA on July 22, 2020. Denominator populations are only for portions of each city which are within Dallas County.

https://sites.cns.utexas.edu/sites/default/files/cid/files/covid-19_school_introduction_risks.pdf?m=1595468503

Many Thanks to:

Our area hospitals and healthcare providers for reporting lab-confirmed COVID-19 cases

Our DCHHS Case and Contact Investigations Team volunteers from:

Dallas County Medical Society

UT Southwestern Medical School

Texas A&M College of Medicine

UTHealth School of Public Health

Retired School Nurses

New COVID-19 cases are reported as a daily aggregate, with this cumulative summary updated Tuesdays and Fridays.

DCHHS COVID-19 Summaries and Case Report Form are accessible at:

<https://www.dallascounty.org/departments/dchhs/2019-novel-coronavirus.php>

DCHHS Acute Communicable Disease Epidemiology Division: COVID-19@dallascounty.org