

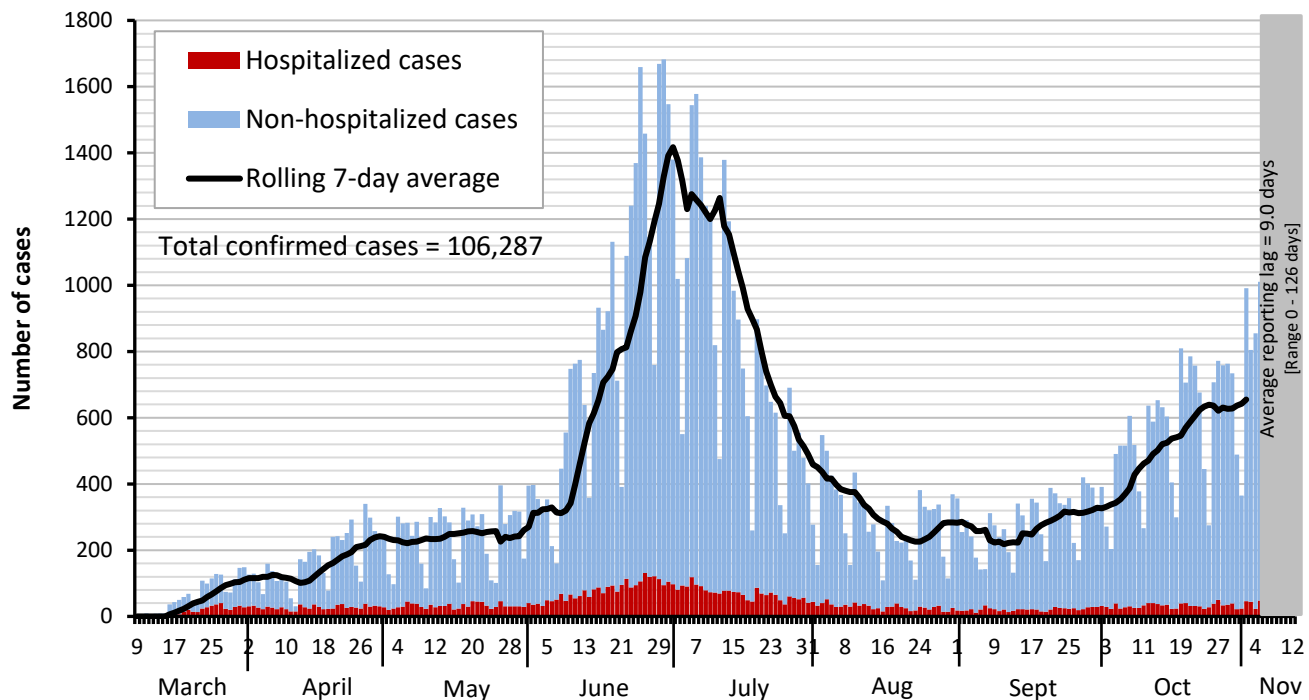


# Dallas County Health and Human Services 2019 Novel Coronavirus (COVID-19) Summary

November 13, 2020

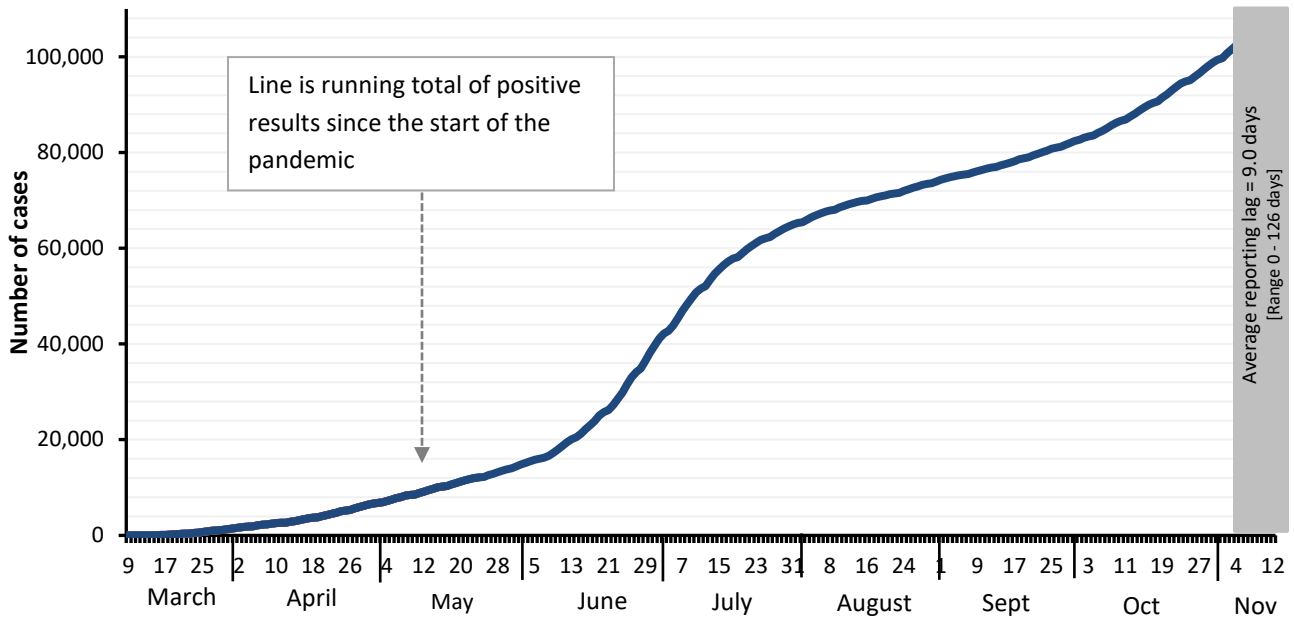
- As of November 13, 2020, DCHHS is reporting an additional 499 confirmed and 268 probable cases of 2019 novel coronavirus (COVID-19). The cumulative total number of confirmed cases in Dallas County is 106,287 including 1,140 confirmed deaths. The total probable case count is 9,596 including 20 probable deaths from COVID-19.
- The provisional seven-day average of daily new confirmed and probable cases (by date of test collection) for CDC week 45 (week ending 11/7/2020) was 958, which is a rate of 37.4 daily new cases per 100,000 residents.
- The percentage of respiratory specimens testing positive for SARS-CoV-2 remains high, with 15.3% of symptomatic patients presenting to area hospitals testing positive in week 45 (week ending 11/7/2020).
- A provisional total of 843 confirmed and probable COVID-19 cases were diagnosed in school-aged children (5 to 17 years) during CDC week 45, an increase of 37% from the preceding week.
- During this past week, ten K-12 schools in Dallas County have initiated temporary closures of their campuses to in-person instruction due to COVID-19 cases.
- Of the 9,598 cases requiring hospitalization to date, almost three-quarters (69%) have been under 65 years of age, and over half reported having a chronic health condition. Diabetes has been an underlying high-risk health condition reported in about a third of all hospitalized patients with COVID-19.
- Twenty-four percent (24%) of deaths have been associated with long-term care facilities.

**Figure 1. Confirmed COVID-19 positive cases by date of test collection, Dallas County: March 10 – November 13, 2020**



1. Data received as of 8:00 pm yesterday, for residents of Dallas County tested with known specimen collection dates. This does include delayed results from previous days. All data are preliminary and subject to change as cases continue to be investigated.
2. Data are incomplete for the most recent dates. Test results may be reported to DCHHS several days after the result. The reporting lag is calculated as time from specimen collection to receipt of test results. The average reporting lag is 9.0 days, with a range from 0 – 126 days.
3. This summary graph includes only confirmed cases based on molecular amplification detection test results.
4. Bars are the number of positive molecular amplification detection tests which were collected that day.
5. Rolling 7-day average is the average number of new confirmed COVID-19 cases collected 7 days prior to value.

**Figure 2. Cumulative confirmed COVID-19 cases by date of test collection, Dallas County: March 10 – November 13, 2020<sup>1-2</sup>**



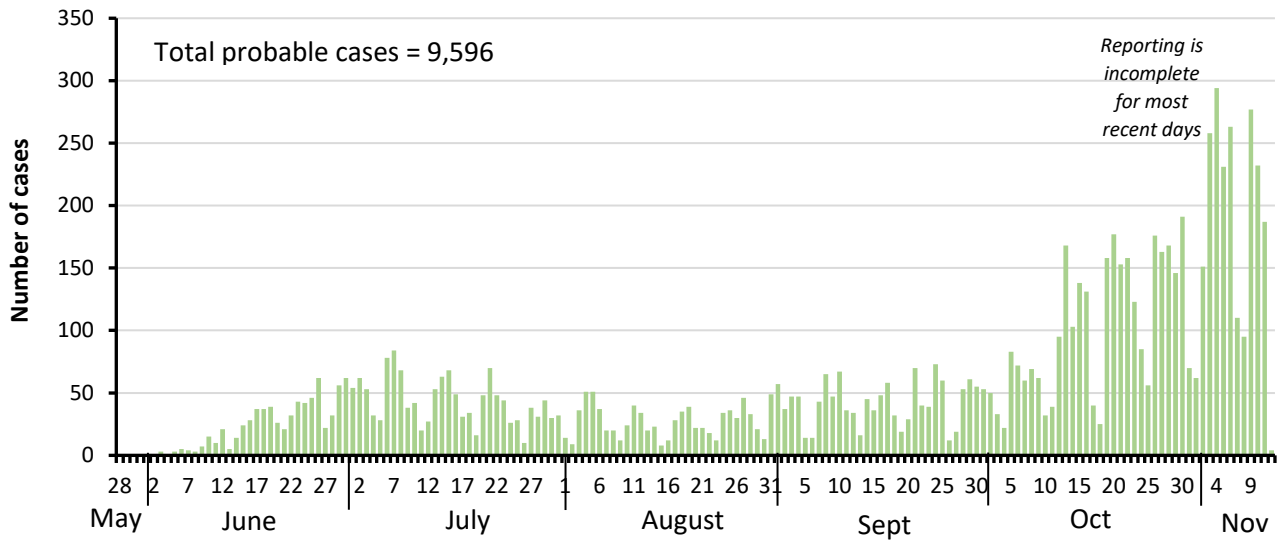
1. Data received as of 8:00 pm yesterday, for residents of Dallas County tested with known specimen collection dates. This does include delayed results from previous days. All data are preliminary and subject to change as cases continue to be investigated.
2. Data are incomplete for the most recent dates. Test results may be reported to DCHHS several days after the result. The reporting lag is calculated as time from specimen collection to receipt of test results. The average reporting lag is 9.0 days, with a range from 0 – 126 days.

**Table 1. Characteristics of cumulative confirmed COVID-19 cases, Dallas County: March 9 – November 13, 2020**

		Number	% of Total Cases <sup>+</sup>
Total Cases in Dallas County residents		N = 106,287	100%
Age Group (years)	0 to 17	11,414	11%
	18 to 40	48,800	46%
	41 to 64	36,162	34%
	≥65	9,793	9%
Sex	Female	54,012	51%
	Male	51,135	49%
Not Hospitalized (Includes: Outpatient, urgent care, drive-through, ED)		96,689	91%
Ever Hospitalized		9,598	9%

<sup>+</sup>Percentages calculated among cases with known age/sex

Figure 3. Probable COVID-19 cases by date of test collection, Dallas County: May 28 – November 13, 2020<sup>1-5</sup>



1. Data received as of 8:00 pm yesterday, for residents of Dallas County tested with known specimen collection dates. This does include delayed results from previous days. All data are preliminary and subject to change as cases continue to be investigated.
2. Data are incomplete for the most recent dates. Test results may be reported to DCHHS several days after the result. The reporting lag is calculated as time from specimen collection to receipt of test results.
3. This summary graph includes only probable cases which meet below CDC case definition. Probable cases are reported separately from confirmed cases.

Table 2. Characteristics of cumulative probable COVID-19 cases, Dallas County: May 28 – November 13, 2020

		Number	% of Total Cases*
Total Probable Cases in Dallas County residents		N = 9,596	100%
Age Group (years)	0 to 17	2,414	25%
	18 to 40	4,300	45%
	41 to 64	2,346	25%
	≥65	525	5%
Sex	Female	4,469	51%
	Male	4,297	49%

**CDC Definition of a COVID-19 case:**

"A COVID-19 case includes [confirmed and probable cases and deaths](#). This change was made to reflect an interim [COVID-19 position](#) statement issued by the Council of State and Territorial Epidemiologists on April 5, 2020. The position statement included a case definition and made COVID-19 a [nationally notifiable disease](#)."

**CDC Definition of a COVID-19 probable case:**

"A [probable case or death](#) is defined as:

- A person meeting [clinical criteria](#) **AND** [epidemiologic evidence](#) with no confirmatory laboratory testing performed for COVID-19;
- A person meeting [presumptive laboratory evidence](#) **AND** either [clinical criteria](#) **OR** [epidemiologic evidence](#);
- A person meeting [vital records criteria](#) with no confirmatory laboratory testing performed for COVID-19."

\*Centers for Disease Control and Prevention FAQ: COVID-19 Data and Surveillance:

<https://www.cdc.gov/coronavirus/2019-ncov/covid-data/faq-surveillance.html>

\*\*See also Texas Department of State Health Services (DSHS) Case Definition:

<https://www.dshs.state.tx.us/coronavirus/docs/DSHS-COVID19CaseDefinitionandInvestigationPrioritizationGuidance.pdf>

**Table 3. Number of confirmed COVID-19 cases by age group and month of collection, Dallas County**

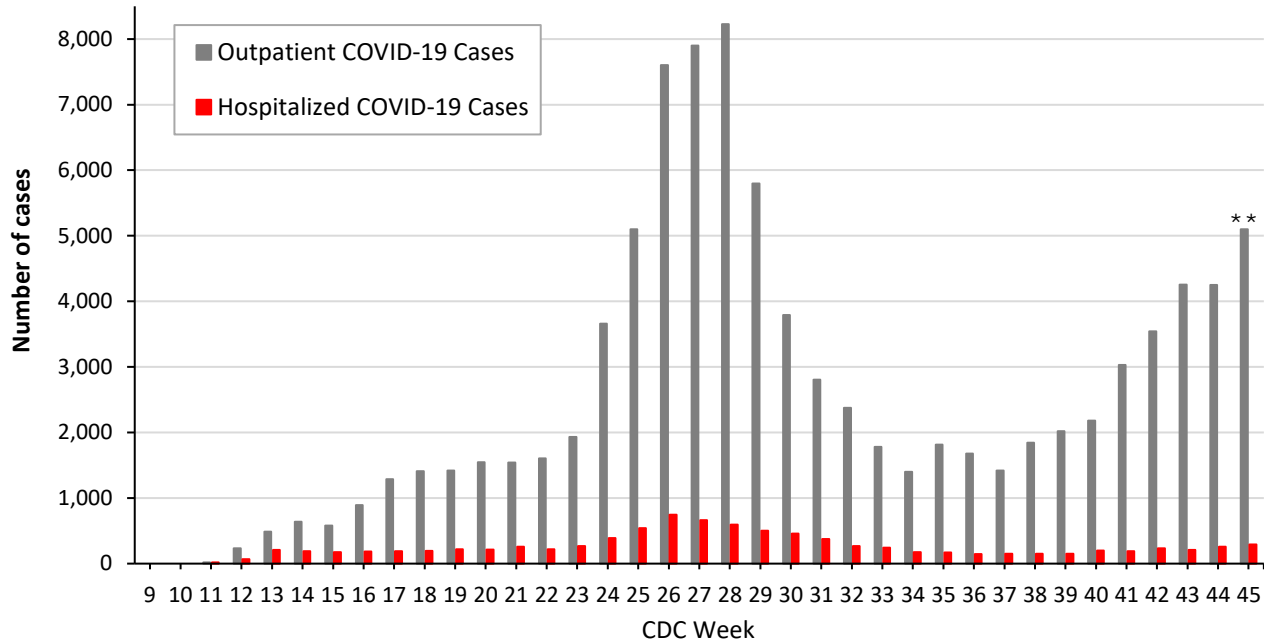
Age Group (in years)	0 to 17		18 to 22		23 to 39		40 to 64		≥65	
Month of Diagnosis	N	%	N	%	N	%	N	%	N	%
March	26	2%	51	4%	421	31%	642	47%	221	16%
April	285	6%	286	6%	1,586	31%	2,259	45%	641	13%
May	736	10%	607	8%	2,457	32%	2,994	40%	784	10%
June	2,287	9%	2,232	9%	10,040	41%	7,957	33%	1,704	7%
July	3,079	12%	2,404	9%	9,091	34%	9,805	37%	2,357	9%
August	1,002	11%	984	11%	2,859	32%	3,169	35%	942	10%
September	928	11%	1,060	13%	2,891	34%	2,863	34%	693	8%
October	2,141	13%	1,446	9%	5,695	33%	5,946	35%	1,739	10%
November (thru 11/13)	808	13%	532	9%	1,995	32%	2,156	35%	654	11%

**Table 4. Confirmed and Probable School-Aged Cases (5 to 17 years) by CDC week of test collection**

City of Residence	Week 40 (ending 10/3)	Week 41 (ending 10/10)	Week 42 (ending 10/17)	Week 43 (ending 10/24)	Week 44 (ending 10/31)	Week 45 (ending 11/7)
Addison	1	1	0	1	0	0
Balch Springs	5	5	5	4	20	7
Carrollton	4	9	18	14	7	12
Cedar Hill	5	11	13	13	14	19
Cockrell Hill	0	0	0	0	1	0
Combine	0	0	0	0	0	0
Coppell	2	3	13	3	10	49
Dallas	134	214	255	333	287	357
DeSoto	4	10	13	25	11	14
Duncanville	6	5	7	11	12	18
Farmers Branch	4	5	6	2	4	5
Ferris	0	0	0	0	0	0
Garland	23	32	48	59	44	90
Glenn Heights	0	1	1	4	2	3
Grand Prairie	20	35	32	60	36	73
Highland Park	3	1	3	0	0	2
Hutchins	0	3	0	2	1	1
Irving	26	45	55	49	40	65
Lancaster	5	7	7	6	7	11
Lewisville	0	0	0	0	0	0
Mesquite	26	44	41	64	57	63
Ovilla	0	0	0	0	0	0
Richardson	8	8	14	18	25	16
Rowlett	13	9	1	9	17	16
Sachse	2	1	3	2	2	2
Seagoville	8	2	3	7	11	5
Sunnyvale	0	1	0	1	1	10
University Park	7	6	4	2	4	5
Wilmer	1	2	1	1	3	0
Wylie	0	1	0	0	0	0
Unknown	0	0	0	0	0	0
<b>Total</b>	<b>307</b>	<b>461</b>	<b>543</b>	<b>690</b>	<b>616</b>	<b>843</b>

*Includes only children ages 5 to 17 years of age residing in Dallas County, with positive molecular or antigen test results received as of 8:00 pm yesterday. Does not include verbal reports of test results that are not accompanied by documentation of test results from a laboratory or testing facility. All data are preliminary and subject to change as cases continue to be investigated.*

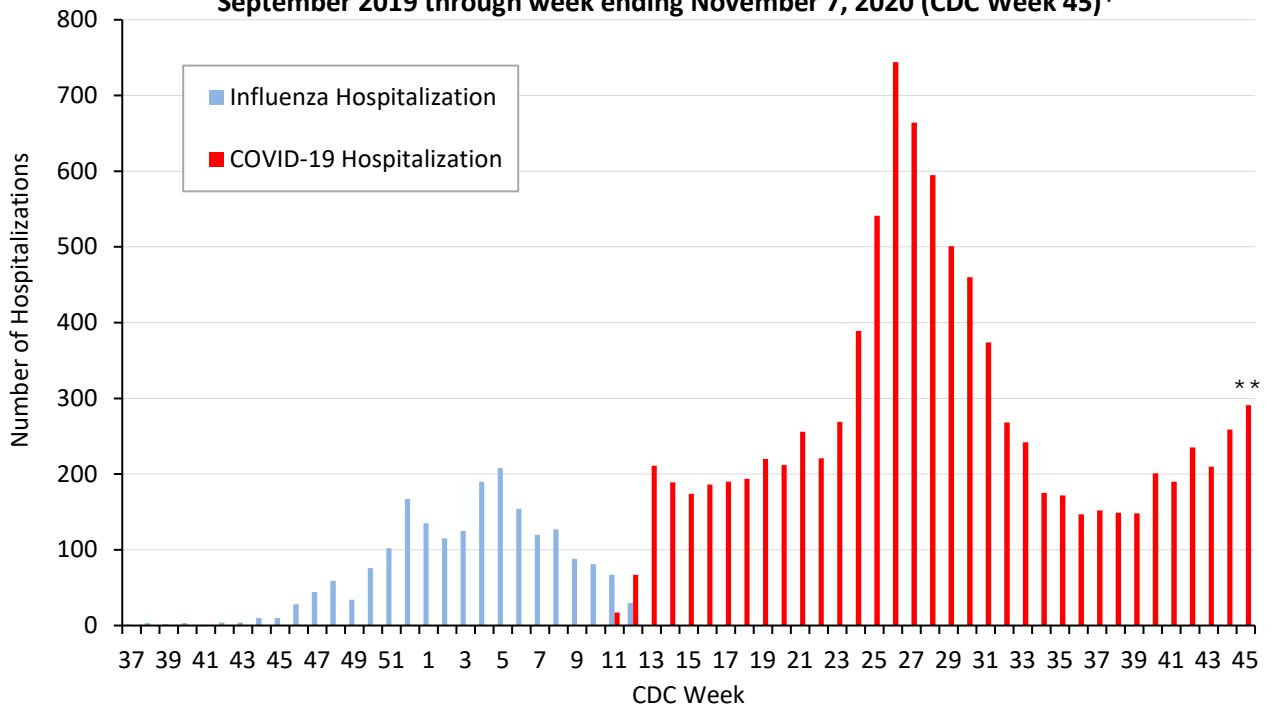
**Figure 5. Non-hospitalized and hospitalized confirmed COVID-19 cases by week of test collection, Dallas County: September 2019 through week ending November 7, 2020 (CDC Week 45)\***



\* Non-hospitalized includes all patients not admitted to acute-care hospitals (e.g. outpatient, urgent care, drive-through, ED-only, LTCF) and diagnosed with confirmed COVID-19. All data are preliminary and subject to change as cases continue to be received and investigated.

\*\* Data are incomplete for the most recent dates. Test results may be reported to DCHHS several days after the result. The reporting lag is calculated as time from specimen collection to receipt of molecular amplification detection test results.

**Figure 6. Influenza and confirmed COVID-19 hospitalizations by week of admission, Dallas County: September 2019 through week ending November 7, 2020 (CDC Week 45)\***



\* Hospitalized Dallas County residents diagnosed with confirmed COVID-19 by molecular amplification detection testing. All data are preliminary and subject to change as cases continue to be received and investigated.

\*\* Data are incomplete for the most recent dates. Test results may be reported to DCHHS several days after the result. The reporting lag is calculated as time from specimen collection to receipt of test results.

**Table 5. Characteristics of cumulative hospitalized confirmed COVID-19 cases, Dallas County: March 10 – November 13, 2020**

		Hospitalized Cases	%
<i>Ever Hospitalized</i>		N = 9,598	9% of Total Cases
Admitted to Intensive Care Unit		2,244	23%
Mechanical Ventilation		1,169	12%
Sex	Male	5,022	52%
	Female	4,576	48%
Age Group (years)	0-17	235	2%
	18-40	2,219	22%
	41-64	4,190	44%
	≥65	3,044	32%
Presence of ≥1 high risk condition		5,247	55%
Diabetes		2,912	30%
Lung Disease (e.g. COPD, asthma)		947	10%
Heart Disease (e.g. CHF)		1,247	13%
Kidney Disease (e.g. ESRD, dialysis)		983	10%
Cancer, Immune-compromise		640	7%
Obesity		1,651	17%
Race/ Ethnicity	White	1,694	18%*
	Hispanic	4,517	47%*
	Black	2,155	22%*
	Other	351	4%*
	Non-reported/ Unknown	881	9%

\* Percentages can also be calculated to exclude cases for which race/ethnicity was not reported

**Table 6. Characteristics of cumulative confirmed COVID-19 deaths, Dallas County: March 10 – November 13 2020**

<i>Death classified as confirmed if decedent was a Dallas County resident with a positive molecular test. Data are obtained from ME office, hospitals, and vital statistics.</i>		Confirmed Deaths	%
		N = 1,140	1.2% of Total Cases
Sex	Male	719	63%
	Female	421	37%
Age Group (years)	0-17	2	<1%
	18-40	50	4%
	41-64	376	33%
	≥65	712	62%
Resident of a Long-Term Care Facility		269	24%
Presence of ≥1 high risk condition		860	75%
Diabetes		523	46%
Race/ Ethnicity	White	282	<b>25%</b> (29% of population) <sup>1</sup>
	Hispanic	534	<b>47%</b> (41% of population) <sup>1</sup>
	Black	277	<b>24%</b> (24% of population) <sup>1</sup>
	Asian	33	<b>3%</b> (7% of population) <sup>1</sup>

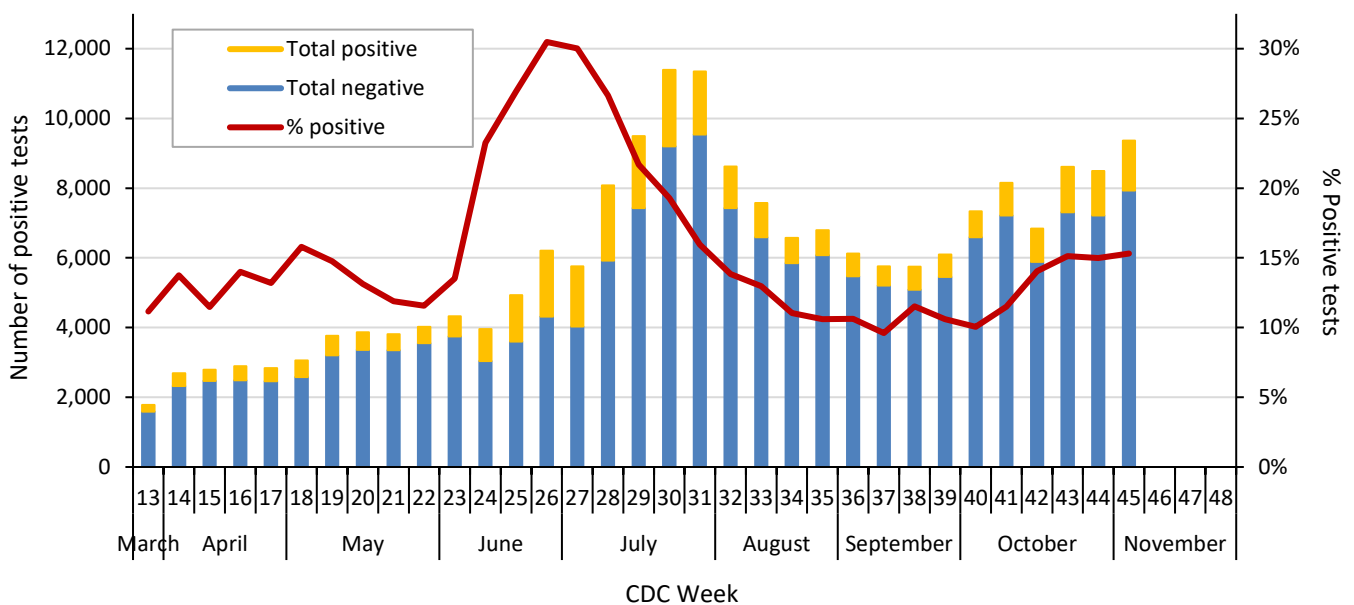
<sup>1</sup> 2019 U.S. Census population estimates for Dallas County

**Table 7. Respiratory virus testing by North Texas hospitals participating in public health surveillance programs: August 30 – November 7, 2020 (CDC Weeks 36-45)<sup>1-2</sup>**

Week Ending		9/5	9/12	9/19	9/26	10/3	10/10	10/17	10/24	10/31	11/7
SARS-CoV-2	Positive	650	553	662	647	737	936	961	1,303	1,271	1,432
	Total Tests	6,119	5,757	5,748	6,098	7,331	8,148	6,841	8,610	8,487	9,361
Novel Coronavirus	% Positive	10.6%	9.6%	11.5%	10.6%	10.1%	11.5%	14.0%	15.1%	15.0%	15.3%
Influenza	Positive	0	0	0	0	0	0	0	2	0	0
	Total Tests	199	185	190	215	231	91	105	308	302	137
	% Positive	0%	0%	0%	0%	0%	0%	0%	0.6%	0%	0%
Seasonal (non-SARS-2) Coronavirus	Positive	0	0	0	0	0	0	0	0	0	0
	Total Tests	62	71	37	72	60	69	83	84	49	104
	% Positive	0%	0%	0%	0%	0%	0%	0%	0%	0%	0%
Adenovirus (respiratory)	Positive	1	2	0	3	2	1	4	2	2	1
	Total Tests	178	158	136	168	162	69	83	193	164	104
	% Positive	0.6%	1.3%	0%	1.8%	1.2%	1.4%	4.8%	1.0%	1.2%	1.0%
Metapneumovirus	Positive	0	0	0	0	0	0	0	0	0	0
	Total Tests	178	158	136	168	162	69	83	193	164	104
	% Positive	0%	0%	0%	0%	0%	0%	0%	0%	0%	0%
Rhinovirus/Enterovirus	Positive	16	21	21	26	23	21	36	48	37	42
	Total Tests	178	158	136	168	162	69	83	193	164	137
	% Positive	9.0%	13.3%	15.4%	15.5%	14.2%	30.4%	43.4%	24.9%	22.6%	30.7%
RSV	Positive	0	0	0	0	0	0	0	0	0	0
	Total Tests	187	164	147	189	185	91	105	220	199	137
	% Positive	0%	0%	0%	0%	0%	0%	0%	0%	0%	0%

Data sources: National Respiratory and Enteric Virus Surveillance System and an additional subset of hospitals voluntarily reporting surveillance PCR data directly to DCHHS. Testing denominators include out-of-county patients and testing performed only through hospitals in Dallas County. (Does not include FEMA drive-thru clinics). Data are incomplete for the most recent dates.

**Figure 7. SARS-CoV-2 positive PCR tests reported to DCHHS by hospital laboratories: March 22 – November 7, 2020 (CDC Weeks 26-45)<sup>1-2</sup>**



1. Data received as of 8:00 pm yesterday. All data are preliminary and subject to change as cases continue to be received and investigated.
2. Data are incomplete for the most recent dates. Test results may be reported to DCHHS several days after the result.

**Table 8. Summary of weekly COVID-19 hospitalizations and deaths from Dallas County hospitals, Vital Statistics and Medical Examiner’s office <sup>1-4</sup>**

Week Ending	09/05	09/12	09/19	09/26	10/03	10/10	10/17	10/24	10/31	11/7	09/08/19–Present
<b>CDC Week</b>	<b>36</b>	<b>37</b>	<b>38</b>	<b>39</b>	<b>40</b>	<b>41</b>	<b>42</b>	<b>43</b>	<b>44</b>	<b>45</b>	<b>Present</b>
COVID-19 hospitalizations <sup>1</sup>	147	152	149	148	01	190	235	210	259	291	9,598*
COVID-19 ICU admissions <sup>1</sup>	25	36	27	32	43	49	45	43	49	42	2,244*
Probable COVID-19-associated deaths <sup>2</sup>	0	0	1	0	0	0	0	3	2	1	20*
Confirmed COVID-19-associated deaths <sup>3</sup>	23	17	15	13	13	15	17	16	17	2	1,140*

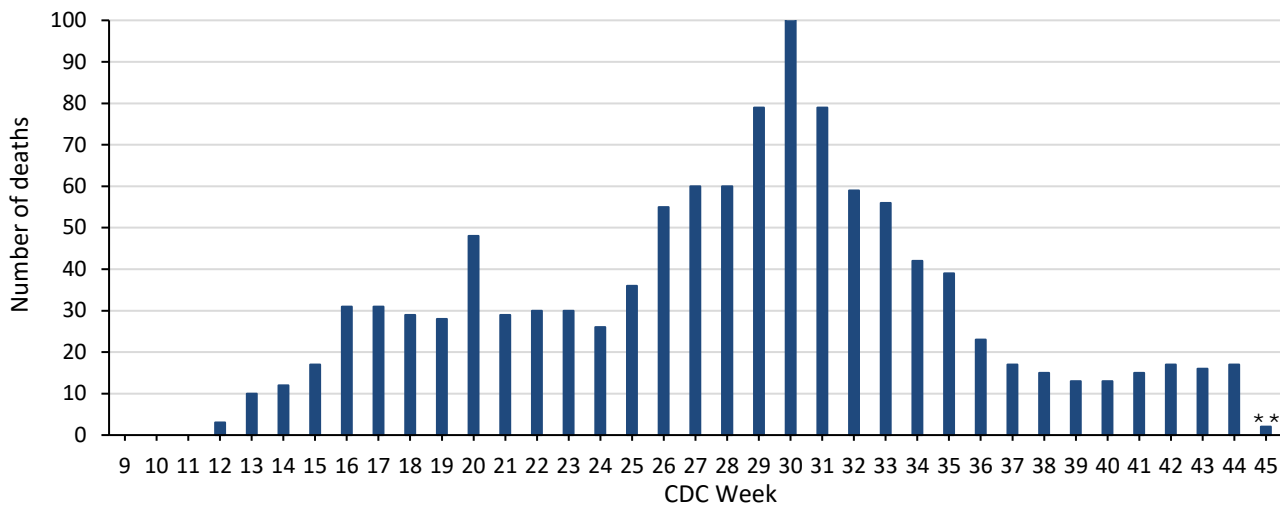
\* All data are preliminary and subject to change as cases continue to be received and investigated.

<sup>1</sup> Reflects all COVID-19-associated hospitalizations and intensive care unit admissions reported from area hospitals within Dallas County by week of admission. Hospitalizations are inclusive of ICU admissions. Data are preliminary and include reports received as of 8:00 pm yesterday.

<sup>2</sup> Probable COVID-19 deaths as defined by CSTE interim case classification criteria--meeting vital records criteria without molecular lab test confirmation.

<sup>3</sup> Confirmed COVID-19 deaths as defined by a positive molecular amplification detection test *and* any of the following: (1) death certificate denotation, (2) medical record documentation of compatible symptoms and clear progression from illness to death, or (3) determination by the County Medical Examiner’s office (ME) of no alternate cause of death. Does not include possible COVID-19-associated deaths with pending determination of cause of death.

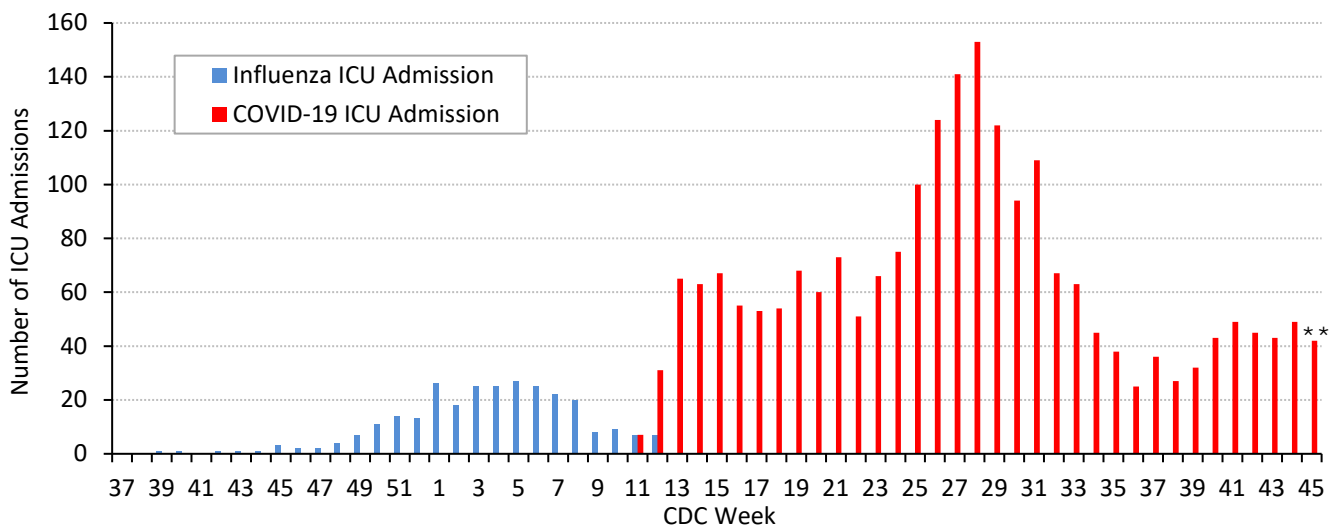
**Figure 8. Confirmed COVID-19-associated deaths by week of death, Dallas County: March 2019 through week ending November 7, 2020 (CDC Week 45)\***



\* Dallas County residents diagnosed with confirmed COVID-19 by molecular amplification detection testing.

\*\* All data are preliminary and subject to change as cases continue to be received and investigated.

**Figure 9. Intensive care unit hospitalizations for influenza and COVID-19 by week of admission, Dallas County: September 2019 through week ending November 7, 2020 (CDC Week 45)\***

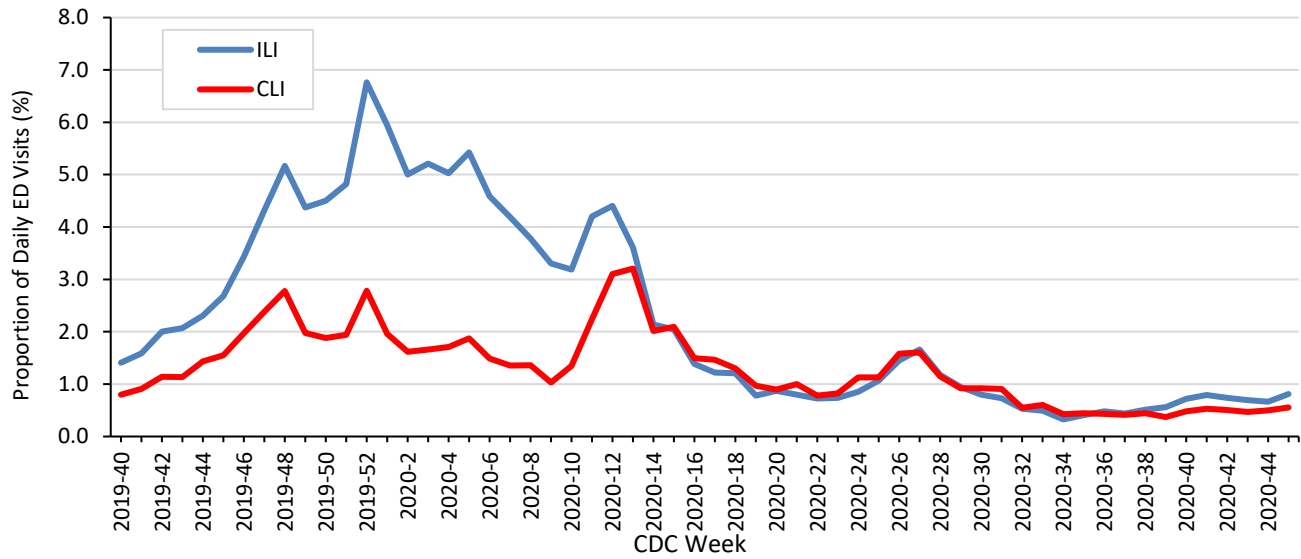


\* New ICU admissions of Dallas County residents reported with confirmed COVID-19 by molecular amplification detection testing as of 8:00 pm yesterday. Hospitalized patients with self-reported residence from outside of Dallas County are not included.

\*\* All data are preliminary and subject to change as cases continue to be received and investigated.



**Figure 10. Syndromic surveillance of emergency department visits for COVID-like illness (CLI)\* and Influenza-like illness (ILI)\*\*, Dallas County: September 29, 2019 – November 7, 2020 (CDC Week 45)**



ESSENCE Data is from 18 hospital emergency departments voluntarily reporting numbers of persons presenting with self-reported chief complaints.

\* CLI is defined as chief complaint of fever and cough or shortness of breath or difficulty breathing.

\*\*ILI is defined as chief complaint of fever and cough or sore throat or mention of influenza.

**Table 9. Summary of weekly COVID-19 confirmed and probable cases and deaths, Dallas County (CDC Weeks 29 - 45)**

CDC Week	Week Ending	Total Confirmed and Probable Cases	Total School-Aged Cases (5 to 17 years)	Daily Average New Confirmed and Probable Cases*	Daily Average New Confirmed and Probable Deaths**	Percentage of Tests Positive for SARS-CoV-2***
29	7/18/2020	6,608	664	944	11	21.7%
30	7/25/2020	4,521	477	646	15	19.3%
31	8/1/2020	3,352	416	479	12	15.9%
32	8/8/2020	2,852	304	407	9	13.8%
33	8/15/2020	2,165	180	309	9	13.0%
34	8/22/2020	1,756	184	251	6	11.0%
35	8/29/2020	2,198	184	314	6	10.6%
36	9/5/2020	2,069	154	296	3	10.6%
37	9/12/2020	1,875	190	268	2	9.6%
38	9/19/2020	2,237	236	320	2	11.5%
39	9/26/2020	2,509	265	358	2	10.6%
40	10/3/2020	2,698	307	385	2	10.1%
41	10/10/2020	3,630	461	519	2	11.5%
42	10/17/2020	4,499	543	643	2	14.0%
43	10/24/2020	5,357	690	765	3	15.1%
44	10/31/2020	5,468	616	781	3	15.0%
45	11/7/2020	6,709	843	958	<1	15.3%

\* For 7-day time period for respective CDC week by date of test collection

\*\* For 7-day time period for respective CDC week by date of death

\*\*\* See Table 6 for historical data

**Table 10. Cumulative COVID-19 cases by city of residence within Dallas County as of November 13, 2020***(e.g. Does not include cases who reside in portions of cities which are not within Dallas County.)*

<i>City of Residence</i>	<b>Confirmed Cases (N=106,287)</b>	<b>Probable Cases (N=9,596)</b>	<b>Total Confirmed + Probable Cases reported in 14 day period from 10/18 – 10/31*</b>	<b>Estimated COVID-19 Prevalence (%) in 14 day period from 10/18 – 10/31** (lower – upper estimate range)</b>
Addison	452	45	41	0.76 - 2.52
Balch Springs	1,146	94	117	1.40 - 4.68
Carrollton	1,834	162	173	0.91 - 3.04
Cedar Hill	1,798	142	224	1.42 - 4.73
Cockrell Hill	226	19	28	2.02 - 6.74
Combine	5	1	0	N/A
Coppell	716	218	112	0.83 - 2.76
Dallas	54,202	4,984	5,281	1.26 - 4.19
DeSoto	1,998	85	204	1.15 - 3.85
Duncanville	1,779	151	202	1.56 - 5.21
Farmers Branch	1,048	129	143	0.89 - 2.97
Ferris	7	0	0	N/A
Garland	9,546	402	845	1.06 - 3.53
Glenn Heights	241	14	20	0.59 - 1.95
Grand Prairie	5,536	861	690	1.55 - 5.17
Highland Park	142	1	20	0.66 - 2.20
Hutchins	284	61	15	0.77 - 2.56
Irving	10,431	5	989	1.24 - 4.12
Lancaster	1,744	662	193	1.48 - 4.92
Lewisville	2	90	0	N/A
Mesquite	6,184	1	721	1.54 - 5.12
Ovilla	1	640	0	N/A
Richardson	2,056	221	321	1.11 - 3.72
Rowlett	1,526	74	193	0.98 - 3.27
Sachse	362	17	47	0.79 - 2.63
Seagoville	2,165	65	120	2.14 - 7.13
Sunnyvale	200	38	14	0.61 - 2.05
University Park	387	397	88	1.06 - 3.52
Wilmer	257	11	20	1.26 - 4.19
Wylie	12	6	4	1.94 - 6.46
<b>Dallas County</b>	<b>106,287</b>	<b>9,596</b>	<b>10,825</b>	<b>1.23 – 4.11</b>

\*Sum of confirmed and probable cases by date of test collection, for 14 day timeframe from: October 18 – October 31, 2020. Most recent 2 weeks not included due to average reporting lag of 9.0 days. Case numbers are only for portions of each city which are within Dallas County.

\*\*Estimated COVID-19 prevalence rate ranges calculated based on: Fox SJ, Lachmann M, Meyers LA. "COVID-19 Campus Introduction Risks for School Reopenings" presented to the TEA on July 22, 2020. Denominator populations are only for portions of each city which are within Dallas County.

[https://sites.cns.utexas.edu/sites/default/files/cid/files/covid-19\\_school\\_introduction\\_risks.pdf?m=1595468503](https://sites.cns.utexas.edu/sites/default/files/cid/files/covid-19_school_introduction_risks.pdf?m=1595468503)

***Many Thanks to:***

Our area hospitals and healthcare providers for reporting lab-confirmed COVID-19 cases

Our DCHHS Case and Contact Investigations Team volunteers from:

Dallas County Medical Society

UT Southwestern Medical School

Texas A&M College of Medicine

UTHealth School of Public Health

Retired School Nurses

New COVID-19 cases are reported as a daily aggregate, with this cumulative summary updated Tuesdays and Fridays.

DCHHS COVID-19 Summaries and Case Report Form are accessible at:

<https://www.dallascounty.org/departments/dchhs/2019-novel-coronavirus.php>

**DCHHS Acute Communicable Disease Epidemiology Division:** COVID-19@dallascounty.org