

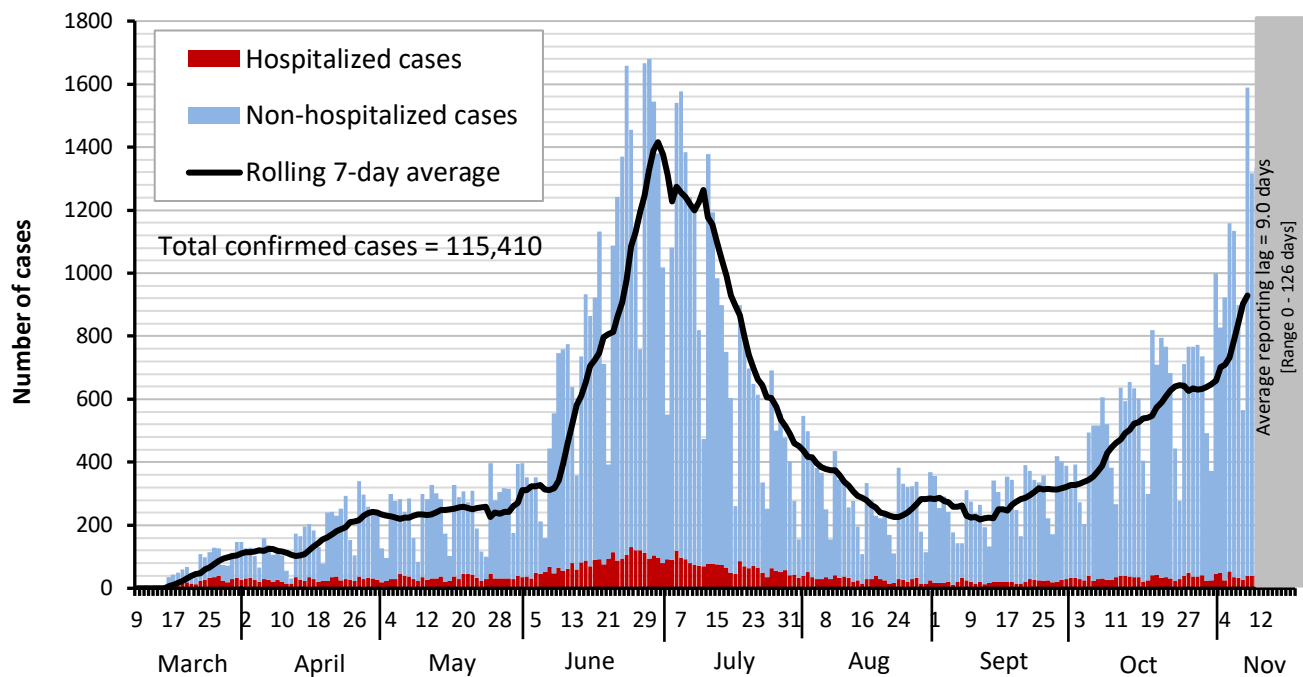


Dallas County Health and Human Services 2019 Novel Coronavirus (COVID-19) Summary

November 20, 2020

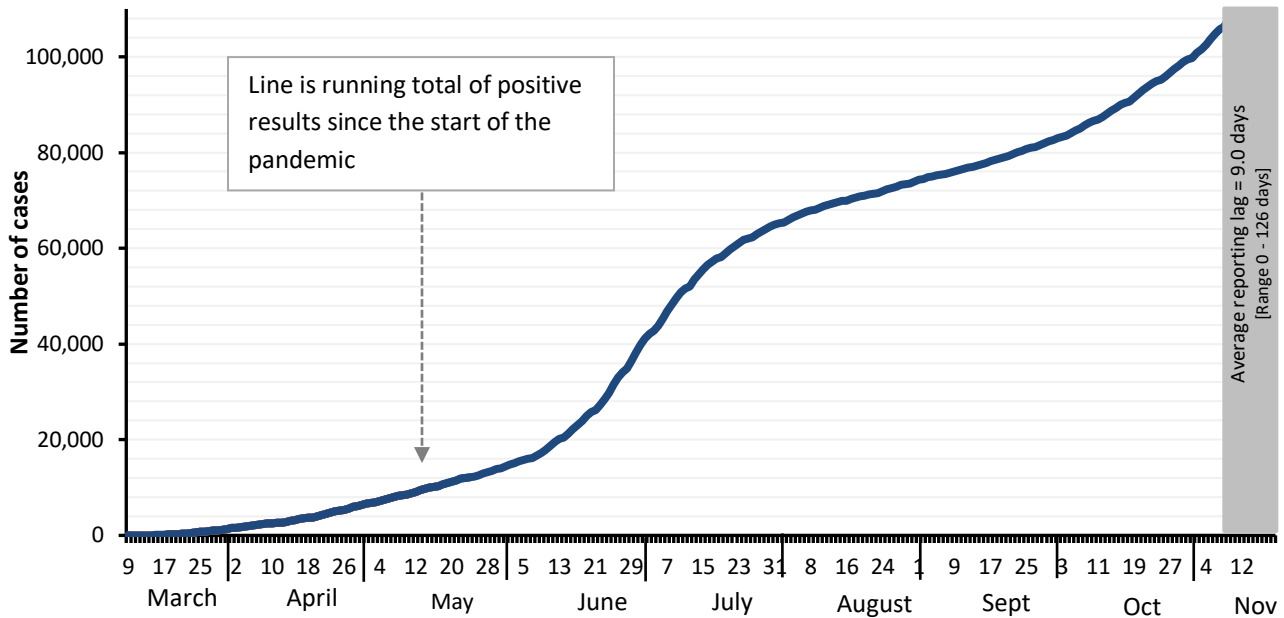
- As of November 20, 2020, DCHHS is reporting an additional 1,646 confirmed and 328 probable cases of 2019 novel coronavirus (COVID-19). The cumulative total number of confirmed cases in Dallas County is 115,410 including 1,177 confirmed deaths. The total number of probable cases is 10,731 including 24 probable deaths.
- The provisional seven-day average of daily new confirmed and probable cases (by date of test collection) for CDC week 46 (week ending 11/14/2020) was 1,321, which is a rate of 50.1 daily new cases per 100,000 residents. This is the highest case rate in Dallas County since the beginning of the pandemic.
- The percentage of respiratory specimens testing positive for SARS-CoV-2 remains high, with 16.8% of symptomatic patients presenting to area hospitals testing positive in week 46 (week ending 11/14/2020).
- Since November 1st, there have been 2,851 COVID-19 cases in school-aged children and staff reported from over 558 separate K-12 schools in Dallas County, including 393 staff members. The proportion of cases occurring in children under 18 years of age has been increasing over the past 2 months.
- Over the past 30 days, there have been over 850 COVID-19 cases reported from 84 separate long-term care facilities, including 304 staff members. This is the highest number of long-term care facilities with active outbreaks reported in Dallas County since the beginning of the pandemic.
- Of the 9,848 cases requiring hospitalization to date, over two-thirds (68%) have been under 65 years of age. Diabetes has been an underlying high-risk health condition reported in about a third of all hospitalized patients.
- Twenty-three percent (23%) of deaths have been associated with long-term care facilities.

Figure 1. Confirmed COVID-19 positive cases by date of test collection, Dallas County: March 10 – November 20, 2020



1. Data received as of 1:00 pm yesterday, for residents of Dallas County tested with known specimen collection dates. This does include delayed results from previous days. All data are preliminary and subject to change as cases continue to be investigated.
2. Data are incomplete for the most recent dates. Test results may be reported to DCHHS several days after the result. The reporting lag is calculated as time from specimen collection to receipt of test results. The average reporting lag is 9.0 days, with a range from 0 – 126 days.
3. This summary graph includes only confirmed cases based on molecular amplification detection test results.
4. Bars are the number of positive molecular amplification detection tests which were collected that day.
5. Rolling 7-day average is the average number of new confirmed COVID-19 cases collected 7 days prior to value.

Figure 2. Cumulative confirmed COVID-19 cases by date of test collection, Dallas County: March 10 – November 20, 2020¹⁻²



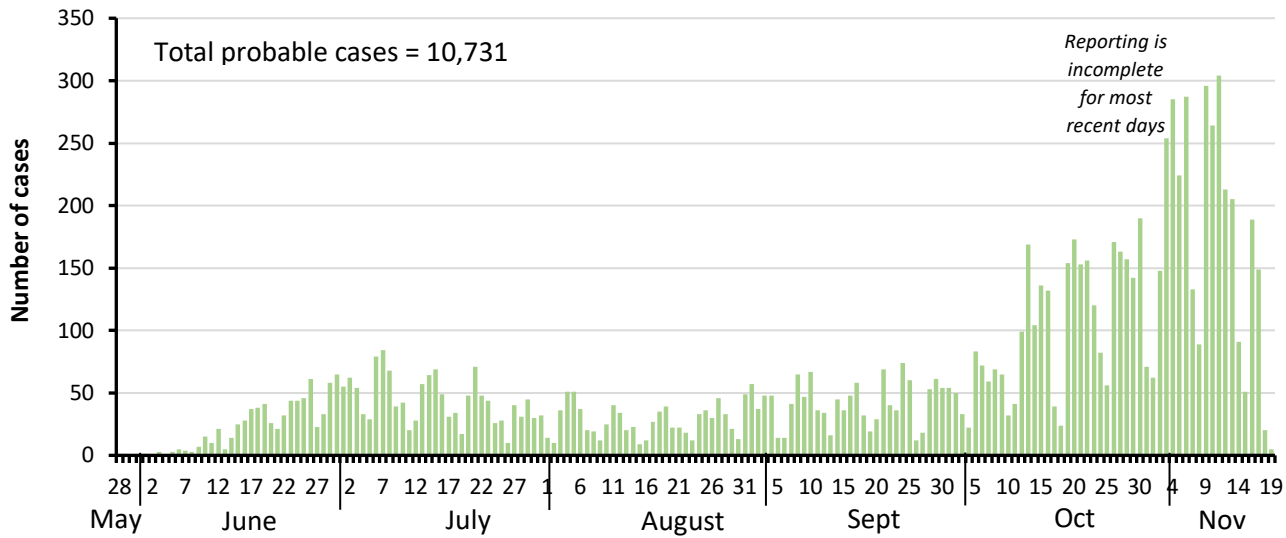
1. Data received as of 1:00 pm yesterday, for residents of Dallas County tested with known specimen collection dates. This does include delayed results from previous days. All data are preliminary and subject to change as cases continue to be investigated.
2. Data are incomplete for the most recent dates. Test results may be reported to DCHHS several days after the result. The reporting lag is calculated as time from specimen collection to receipt of test results. The average reporting lag is 9.0 days, with a range from 0 – 126 days.

Table 1. Characteristics of cumulative confirmed COVID-19 cases, Dallas County: March 9 – November 20, 2020

		Number	% of Total Cases ⁺
Total Cases in Dallas County residents		N = 115,410	100%
Age Group (years)	0 to 17	12,627	11%
	18 to 40	52,864	46%
	41 to 64	39,150	34%
	≥65	10,649	9%
Sex	Female	58,811	51%
	Male	55,182	49%
Not Hospitalized (Includes: Outpatient, urgent care, drive-through, ED)		105,562	91%
Ever Hospitalized		9,848	9%

⁺Percentages calculated among cases with known age/sex

Figure 3. Probable COVID-19 cases by date of test collection, Dallas County: May 28 – November 20, 2020¹⁻⁵



1. Data received as of 1:00 pm yesterday, for residents of Dallas County tested with known specimen collection dates. This does include delayed results from previous days. All data are preliminary and subject to change as cases continue to be investigated.
2. Data are incomplete for the most recent dates. Test results may be reported to DCHHS several days after the result. The reporting lag is calculated as time from specimen collection to receipt of test results.
3. This summary graph includes only probable cases which meet below CDC case definition. Probable cases are reported separately from confirmed cases.

Table 2. Characteristics of cumulative probable COVID-19 cases, Dallas County: May 28 – November 20, 2020

		Number	% of Total Cases*
Total Probable Cases in Dallas County residents		N = 10,731	100%
Age Group (years)	0 to 17	2,718	25%
	18 to 40	4,777	45%
	41 to 64	2,637	25%
	≥65	587	5%
Sex	Female	5,032	51%
	Male	4,887	49%

CDC Definition of a COVID-19 case:

"A COVID-19 case includes [confirmed and probable cases and deaths](#). This change was made to reflect an interim [COVID-19 position](#) statement issued by the Council of State and Territorial Epidemiologists on April 5, 2020. The position statement included a case definition and made COVID-19 a [nationally notifiable disease](#)."

CDC Definition of a COVID-19 probable case:

"A [probable case or death](#) is defined as:

- A person meeting [clinical criteria](#) **AND** [epidemiologic evidence](#) with no confirmatory laboratory testing performed for COVID-19;
- A person meeting [presumptive laboratory evidence](#) **AND** either [clinical criteria](#) **OR** [epidemiologic evidence](#);
- A person meeting [vital records criteria](#) with no confirmatory laboratory testing performed for COVID-19."

*Centers for Disease Control and Prevention FAQ: COVID-19 Data and Surveillance:

<https://www.cdc.gov/coronavirus/2019-ncov/covid-data/faq-surveillance.html>

**See also Texas Department of State Health Services (DSHS) Case Definition:

<https://www.dshs.state.tx.us/coronavirus/docs/DSHS-COVID19CaseDefinitionandInvestigationPrioritizationGuidance.pdf>

Table 3. Number of confirmed COVID-19 cases by age group and month of collection, Dallas County

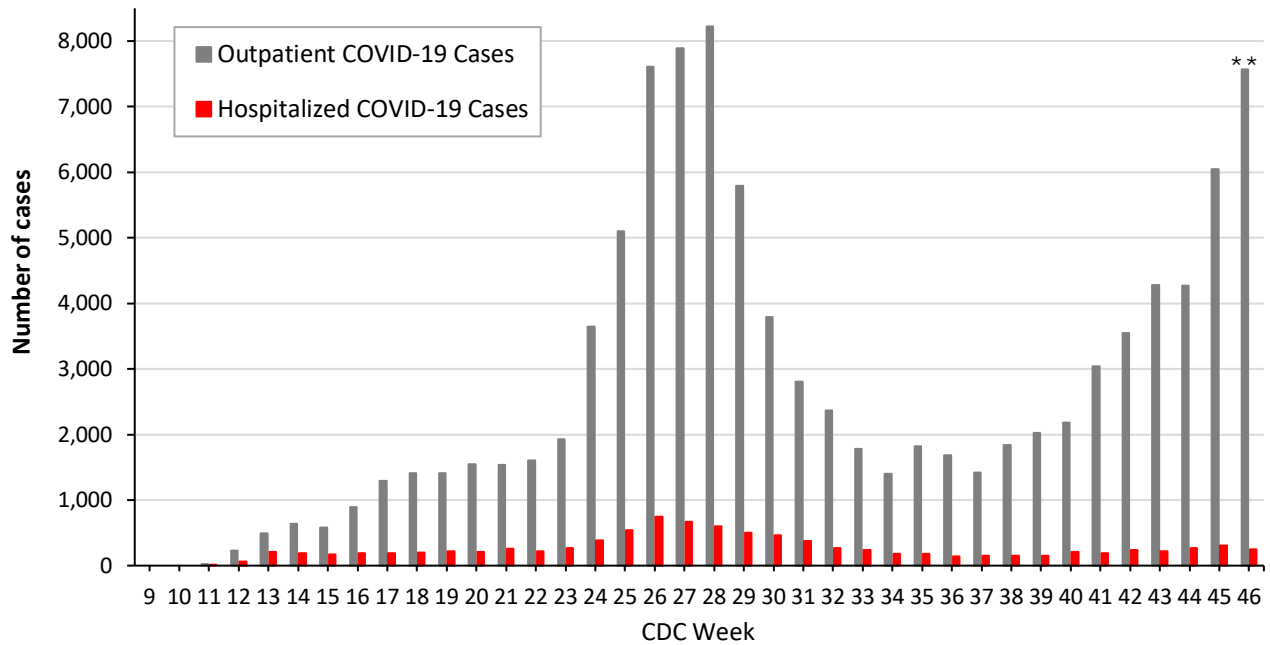
Age Group (in years)	0 to 17		18 to 22		23 to 39		40 to 64		≥65	
Month of Diagnosis	N	%	N	%	N	%	N	%	N	%
March	26	2%	51	4%	421	31%	642	47%	221	16%
April	285	6%	286	6%	1,586	31%	2,259	45%	641	13%
May	736	10%	607	8%	2,457	32%	2,994	40%	784	10%
June	2,287	9%	2,232	9%	10,040	41%	7,957	33%	1,704	7%
July	3,079	12%	2,404	9%	9,091	34%	9,805	37%	2,357	9%
August	1,002	11%	984	11%	2,859	32%	3,169	35%	942	10%
September	931	11%	1,058	13%	2,892	34%	2,867	34%	693	8%
October	2,148	13%	1,449	9%	5,725	33%	5,965	35%	1,747	10%
November (thru 11/20)	2,794	15%	1,559	8%	6,250	34%	6,108	33%	1,702	9%

Table 4. Confirmed and Probable School-Aged Cases (5 to 17 years) by CDC week of test collection

City of Residence	Week 41 (ending 10/10)	Week 42 (ending 10/17)	Week 43 (ending 10/24)	Week 44 (ending 10/31)	Week 45 (ending 11/7)	Week 46 (ending 11/14)
Addison	1	0	1	0	0	2
Balch Springs	4	6	4	21	7	20
Carrollton	9	17	13	8	13	24
Cedar Hill	11	13	14	14	21	31
Cockrell Hill	0	0	0	1	2	3
Combine	0	0	0	0	0	0
Coppell	3	13	3	10	48	27
Dallas	213	252	331	286	385	556
DeSoto	10	13	26	11	16	18
Duncanville	5	7	11	12	18	26
Farmers Branch	6	6	2	4	7	11
Ferris	0	0	0	0	0	0
Garland	33	53	59	43	105	145
Glenn Heights	1	1	4	2	3	3
Grand Prairie	35	32	60	36	80	63
Highland Park	0	3	0	0	2	2
Hutchins	3	0	2	1	1	0
Irving	45	56	49	40	73	106
Lancaster	7	7	6	7	12	18
Lewisville	0	0	0	0	0	0
Mesquite	44	43	62	55	67	94
Ovilla	0	0	0	0	0	0
Richardson	8	14	18	26	18	21
Rowlett	8	2	9	18	19	20
Sachse	1	2	2	2	2	7
Seagoville	2	3	7	11	7	9
Sunnyvale	1	0	1	1	13	7
University Park	7	3	2	4	5	8
Wilmer	2	1	1	2	0	3
Wylie	1	0	0	0	0	0
Unknown	0	0	0	0	0	0
Total	460	547	687	615	934	1,224

Includes only children ages 5 to 17 years of age residing in Dallas County, with positive molecular or antigen test results received as of 8:00 pm yesterday. Does not include verbal reports of test results that are not accompanied by documentation of test results from a laboratory or testing facility. All data are preliminary and subject to change as cases continue to be investigated.

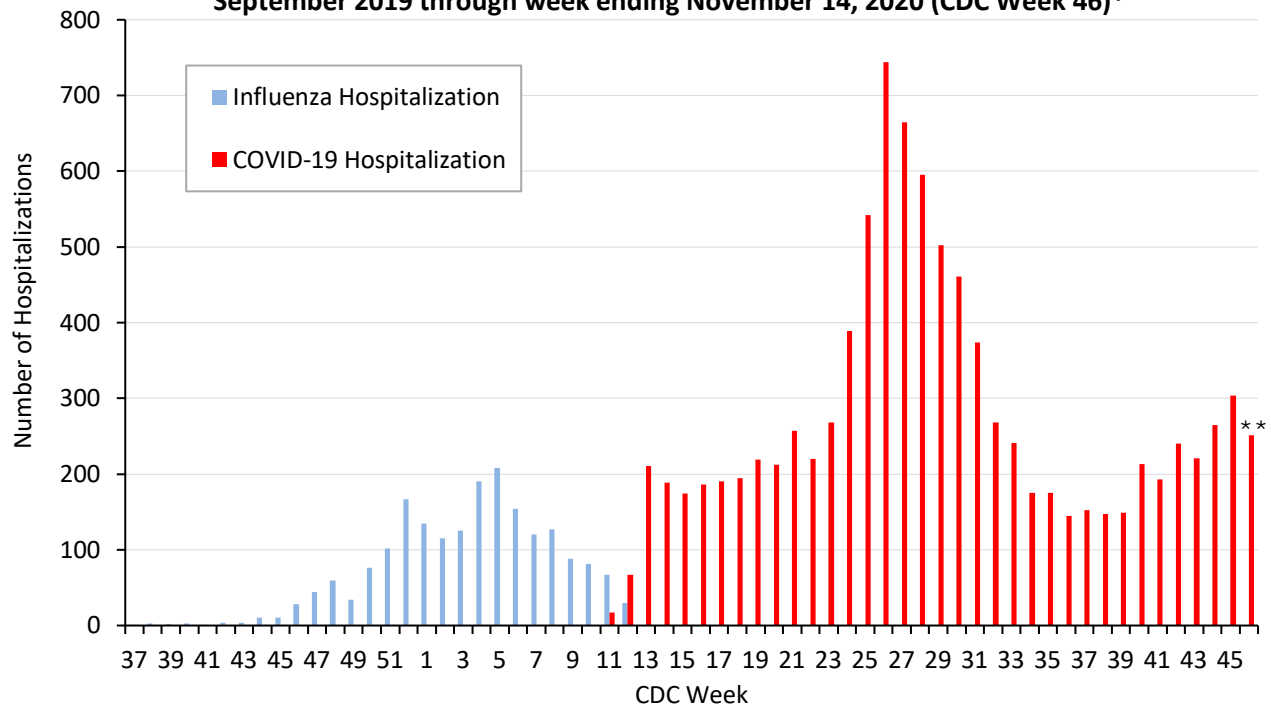
Figure 5. Non-hospitalized and hospitalized confirmed COVID-19 cases by week of test collection, Dallas County: September 2019 through week ending November 14, 2020 (CDC Week 46)*



* Non-hospitalized includes all patients not admitted to acute-care hospitals (e.g. outpatient, urgent care, drive-through, ED-only, LTCF) and diagnosed with confirmed COVID-19. All data are preliminary and subject to change as cases continue to be received and investigated.

** Data are incomplete for the most recent dates. Test results may be reported to DCHHS several days after the result. The reporting lag is calculated as time from specimen collection to receipt of molecular amplification detection test results.

Figure 6. Influenza and confirmed COVID-19 hospitalizations by week of admission, Dallas County: September 2019 through week ending November 14, 2020 (CDC Week 46)*



* Hospitalized Dallas County residents diagnosed with confirmed COVID-19 by molecular amplification detection testing. All data are preliminary and subject to change as cases continue to be received and investigated.

** Data are incomplete for the most recent dates. Test results may be reported to DCHHS several days after the result. The reporting lag is calculated as time from specimen collection to receipt of test results.

Table 5. Characteristics of cumulative hospitalized confirmed COVID-19 cases, Dallas County: March 10 – November 20, 2020

		Hospitalized Cases	%
<i>Ever Hospitalized</i>		N = 9,848	9% of Total Cases
Admitted to Intensive Care Unit		2,312	24%
Mechanical Ventilation		1,214	12%
Sex	Male	5,146	52%
	Female	4,702	48%
Age Group (years)	0-17	240	2%
	18-40	2,171	22%
	41-64	4,292	44%
	≥65	3,145	32%
Presence of ≥1 high risk condition		5,418	55%
Diabetes		3,006	31%
Lung Disease (e.g. COPD, asthma)		959	10%
Heart Disease (e.g. CHF)		1,276	13%
Kidney Disease (e.g. ESRD, dialysis)		984	10%
Cancer, Immune-compromise		675	7%
Obesity		1,716	17%
Race/ Ethnicity	White	1,763	18%*
	Hispanic	4,597	47%*
	Black	2,224	22%*
	Other	364	4%*
	Non-reported/ Unknown	900	9%

* Percentages can also be calculated to exclude cases for which race/ethnicity was not reported

Table 6. Characteristics of cumulative confirmed COVID-19 deaths, Dallas County: March 10 – November 20 2020

<i>Death classified as confirmed if decedent was a Dallas County resident with a positive molecular test. Data are obtained from ME office, hospitals, and vital statistics.</i>		Confirmed Deaths	%
		N = 1,177	1.0% of Total Cases
Sex	Male	740	63%
	Female	437	37%
Age Group (years)	0-17	2	<1%
	18-40	52	4%
	41-64	393	33%
	≥65	730	62%
Resident of a Long-Term Care Facility		274	23%
Presence of ≥1 high risk condition		887	75%
Diabetes		544	46%
Race/ Ethnicity	White	294	25% (29% of population) ¹
	Hispanic	550	47% (41% of population) ¹
	Black	284	24% (24% of population) ¹
	Asian	35	3% (7% of population) ¹

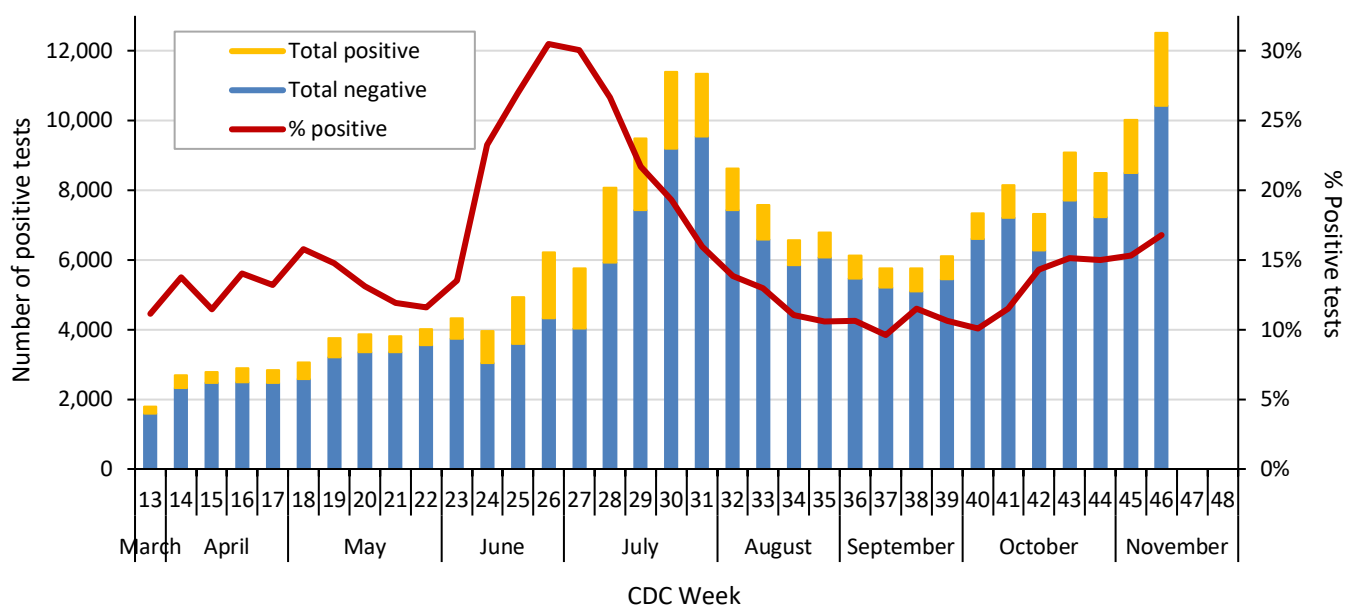
¹ 2019 U.S. Census population estimates for Dallas County

Table 7. Respiratory virus testing by North Texas hospitals participating in public health surveillance programs: September 6 – November 14, 2020 (CDC Weeks 37-46)¹⁻²

Week Ending		9/12	9/19	9/26	10/3	10/10	10/17	10/24	10/31	11/7	11/14
SARS-CoV-2	Positive	553	662	647	737	936	1,046	1,374	1,271	1,533	2,096
	Total Tests	5,757	5,748	6,098	7,331	8,148	7,308	9,072	8,487	10,018	12,510
Novel Coronavirus	% Positive	9.6%	11.5%	10.6%	10.1%	11.5%	14.3%	15.1%	15.0%	15.3%	16.8%
Influenza	Positive	0	0	0	0	0	0	2	0	0	0
	Total Tests	185	190	215	231	91	105	308	302	137	178
	% Positive	0%	0%	0%	0%	0%	0%	0.6%	0%	0%	0%
Seasonal (non-SARS-2) Coronavirus	Positive	0	0	0	0	0	0	0	0	0	0
	Total Tests	71	37	72	60	69	83	84	49	104	143
	% Positive	0%	0%	0%	0%	0%	0%	0%	0%	0%	0%
Adenovirus (respiratory)	Positive	2	0	3	2	1	4	2	2	1	4
	Total Tests	158	136	168	162	69	83	193	164	104	143
	% Positive	1.3%	0%	1.8%	1.2%	1.4%	4.8%	1.0%	1.2%	1.0%	2.8%
Metapneumovirus	Positive	0	0	0	0	0	0	0	0	0	1
	Total Tests	158	136	168	162	69	83	193	164	104	143
	% Positive	0%	0%	0%	0%	0%	0%	0%	0%	0%	0.7%
Rhinovirus/Enterovirus	Positive	21	21	26	23	21	36	48	37	42	52
	Total Tests	158	136	168	162	69	83	193	164	137	143
	% Positive	13.3%	15.4%	15.5%	14.2%	30.4%	43.4%	24.9%	22.6%	30.7%	36.4%
RSV	Positive	0	0	0	0	0	0	0	0	0	0
	Total Tests	164	147	189	185	91	105	220	199	137	178
	% Positive	0%	0%	0%	0%	0%	0%	0%	0%	0%	0%

Data sources: National Respiratory and Enteric Virus Surveillance System and an additional subset of hospitals voluntarily reporting surveillance PCR data directly to DCHHS. Testing denominators include out-of-county patients and testing performed only through hospitals in Dallas County. (Does not include FEMA drive-thru clinics). Data are incomplete for the most recent dates.

Figure 7. SARS-CoV-2 positive PCR tests reported to DCHHS by hospital laboratories: March 22 – November 14, 2020 (CDC Weeks 26-46)¹⁻²



1. Data received as of 1:00 pm yesterday. All data are preliminary and subject to change as cases continue to be received and investigated.
2. Data are incomplete for the most recent dates. Test results may be reported to DCHHS several days after the result.

Table 8. Summary of weekly COVID-19 hospitalizations and deaths from Dallas County hospitals, Vital Statistics and Medical Examiner’s office ¹⁻⁴

Week Ending	09/12	09/19	09/26	10/03	10/10	10/17	10/24	10/31	11/7	11/14	09/08/19–Present
CDC Week	37	38	39	40	41	42	43	44	45	46	Present
COVID-19 hospitalizations ¹	152	147	149	213	193	240	221	265	304	251	9,848*
COVID-19 ICU admissions ¹	36	25	33	48	47	52	48	57	48	37	2,312*
Probable COVID-19-associated deaths ²	0	0	1	0	0	0	3	2	3	2	24*
Confirmed COVID-19-associated deaths ³	17	15	13	14	15	17	17	21	16	16	1,177*

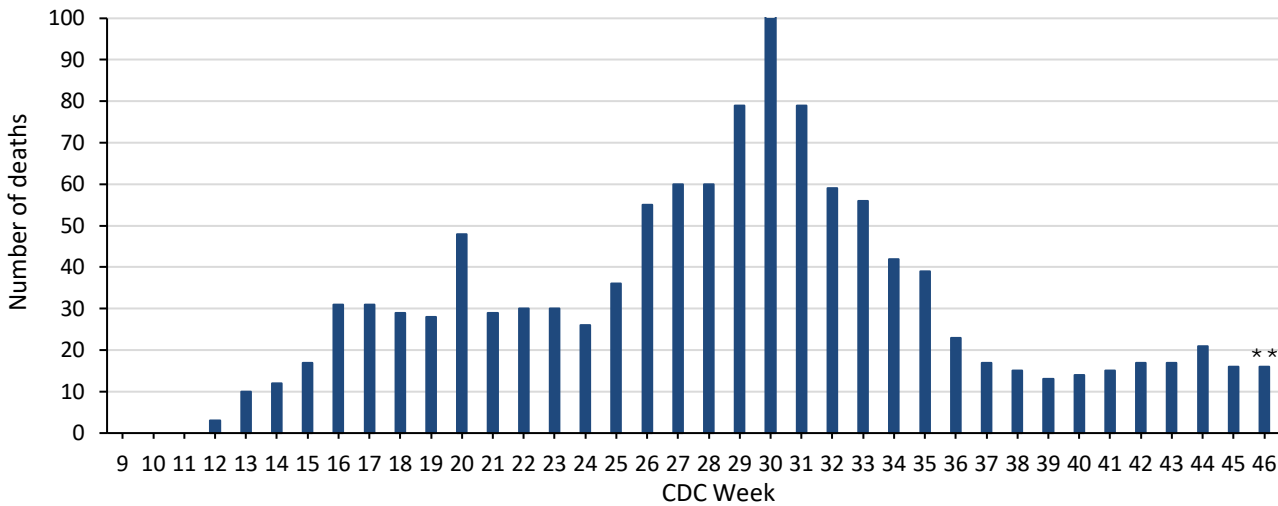
* All data are preliminary and subject to change as cases continue to be received and investigated.

¹ Reflects all COVID-19-associated hospitalizations and intensive care unit admissions reported from area hospitals within Dallas County by week of admission. Hospitalizations are inclusive of ICU admissions. Data are preliminary and include reports received as of 8:00 pm yesterday.

² Probable COVID-19 deaths as defined by CSTE interim case classification criteria—meeting vital records criteria without molecular lab test confirmation.

³ Confirmed COVID-19 deaths as defined by a positive molecular amplification detection test *and* any of the following: (1) death certificate denotation, (2) medical record documentation of compatible symptoms and clear progression from illness to death, or (3) determination by the County Medical Examiner’s office (ME) of no alternate cause of death. Does not include possible COVID-19-associated deaths with pending determination of cause of death.

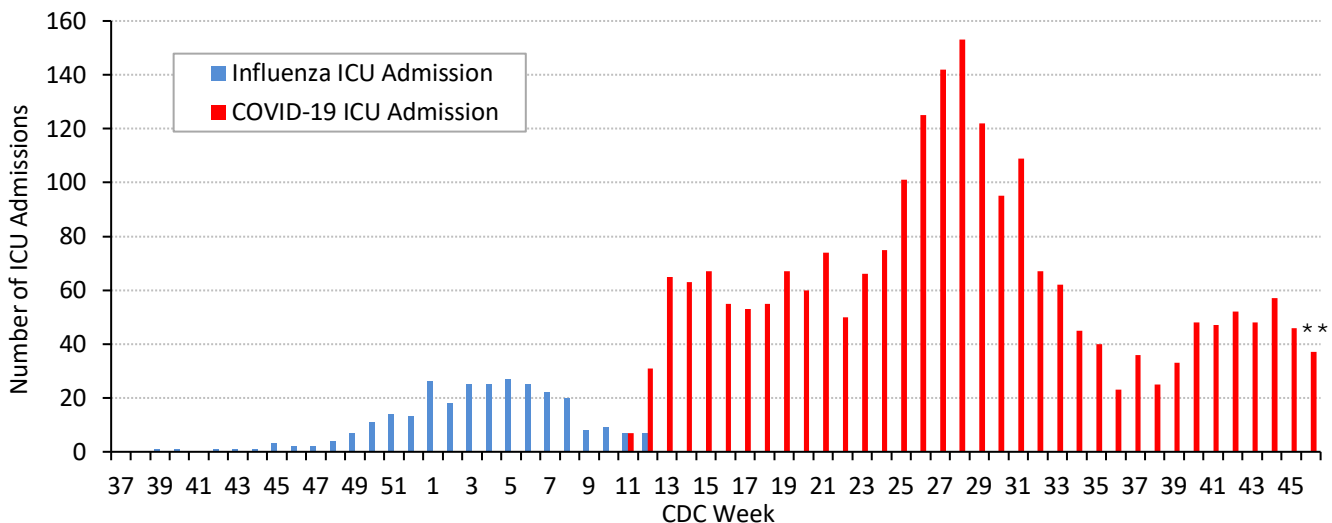
Figure 8. Confirmed COVID-19-associated deaths by week of death, Dallas County: March 2019 through week ending November 14, 2020 (CDC Week 46)*



* Dallas County residents diagnosed with confirmed COVID-19 by molecular amplification detection testing.

** All data are preliminary and subject to change as cases continue to be received and investigated.

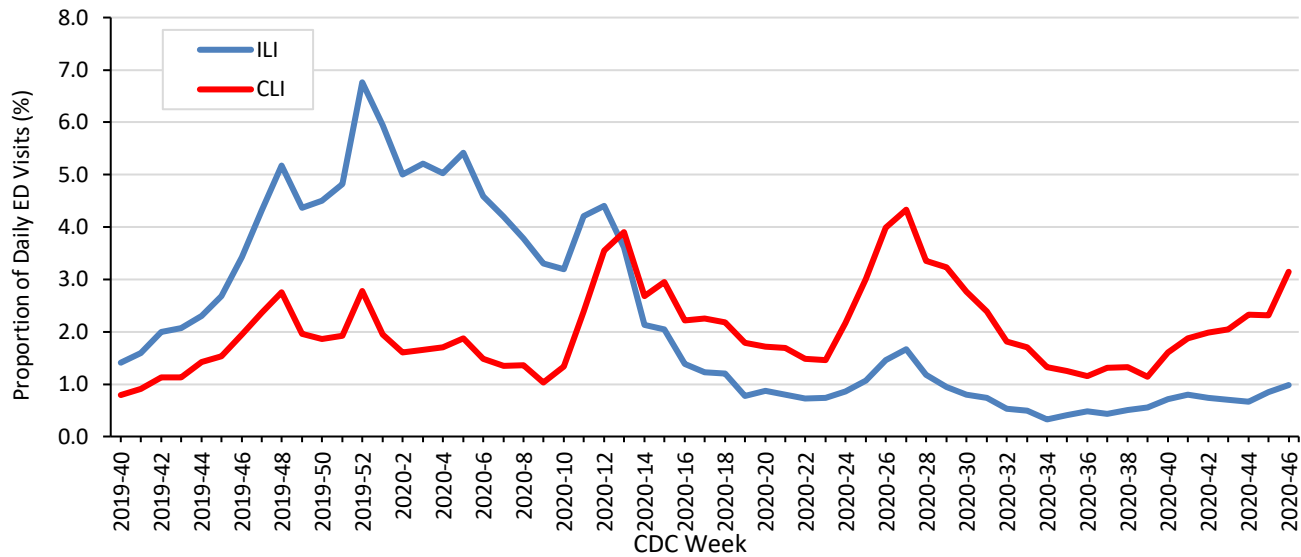
Figure 9. Intensive care unit hospitalizations for influenza and COVID-19 by week of admission, Dallas County: September 2019 through week ending November 14, 2020 (CDC Week 46)*



* New ICU admissions of Dallas County residents reported with confirmed COVID-19 by molecular amplification detection testing as of 1:00 pm yesterday. Hospitalized patients with self-reported residence from outside of Dallas County are not included.

** All data are preliminary and subject to change as cases continue to be received and investigated.

Figure 10. Syndromic surveillance of emergency department visits for COVID-like illness (CLI)* and Influenza-like illness (ILI), Dallas County: September 29, 2019 – November 14, 2020 (CDC Week 46)**



ESSENCE Data is from 18 hospital emergency departments voluntarily reporting numbers of persons presenting with self-reported chief complaints.
 * CLI is defined as chief complaint of fever and cough or shortness of breath or difficulty breathing.
 **ILI is defined as chief complaint of fever and cough or sore throat or mention of influenza.

Table 9. Summary of weekly COVID-19 confirmed and probable cases and deaths, Dallas County (CDC Weeks 25 - 46)

CDC Week	Week Ending	Total Confirmed and Probable Cases	Total School-Aged Cases (5 to 17 years)	Daily Average New Confirmed and Probable Cases*	Daily Average New Confirmed and Probable Deaths**	Percentage of Tests Positive for SARS-CoV-2***
25	6/20/2020	5,863	453	838	5	26.9%
26	6/27/2020	8,618	625	1,231	8	30.5%
27	7/4/2020	8,949	660	1,278	9	30.0%
28	7/11/2020	9,199	832	1,314	9	26.6%
29	7/18/2020	6,613	662	945	11	21.7%
30	7/25/2020	4,520	477	646	15	19.3%
31	8/1/2020	3,357	416	480	12	15.9%
32	8/8/2020	2,848	304	407	9	13.8%
33	8/15/2020	2,166	180	309	9	13.0%
34	8/22/2020	1,758	184	251	6	11.0%
35	8/29/2020	2,199	182	314	6	10.6%
36	9/5/2020	2,072	153	296	3	10.6%
37	9/12/2020	1,872	189	267	2	9.6%
38	9/19/2020	2,235	236	319	2	11.5%
39	9/26/2020	2,509	264	358	2	10.6%
40	10/3/2020	2,695	306	385	2	10.1%
41	10/10/2020	3,639	460	520	2	11.5%
42	10/17/2020	4,510	547	644	2	14.3%
43	10/24/2020	5,379	687	768	3	15.1%
44	10/31/2020	5,472	615	782	3	15.0%
45	11/7/2020	7,703	934	1,100	3	15.3%
46	11/14/2020	9,247	1,224	1,321	3	16.8%

* For 7-day time period for respective CDC week by date of test collection

** For 7-day time period for respective CDC week by date of death

*** See Table 6 for historical data

Table 10. Cumulative COVID-19 cases by city of residence within Dallas County as of November 20, 2020*(e.g. Does not include cases who reside in portions of cities which are not within Dallas County.)*

<i>City of Residence</i>	Confirmed Cases (N=115,410)	Probable Cases (N=10,731)	Total Confirmed + Probable Cases reported in 14 day period from 10/25 – 11/7*	Estimated COVID-19 Prevalence (%) in 14 day period from 10/25 – 11/7** (lower – upper estimate range)
Addison	513	52	59	1.09 - 3.63
Balch Springs	1,267	101	131	1.57 - 5.24
Carrollton	1,980	184	238	1.26 - 4.19
Cedar Hill	1,955	153	259	1.64 - 5.47
Cockrell Hill	250	21	24	1.73 - 5.78
Combine	7	1	2	0.68 - 2.26
Coppell	838	240	204	1.51 - 5.03
Dallas	58,281	5,536	6,401	1.52 - 5.08
DeSoto	2,153	93	250	1.42 - 4.72
Duncanville	1,946	165	236	1.83 - 6.09
Farmers Branch	1,222	141	144	0.90 - 2.99
Ferris	7	0	1	N/A
Garland	10,533	586	1,160	1.45 - 4.84
Glenn Heights	273	16	16	0.47 - 1.56
Grand Prairie	6,031	899	779	1.75 - 5.84
Highland Park	180	65	34	1.12 - 3.74
Hutchins	304	6	23	1.18 - 3.92
Irving	11,245	719	1,148	1.44 - 4.79
Lancaster	1,921	95	276	2.11 - 7.04
Lewisville	1	1	0	N/A
Mesquite	6,738	696	796	1.70 - 5.65
Ovilla	1	1	0	N/A
Richardson	2,293	239	375	1.30 - 4.34
Rowlett	1,762	112	261	1.33 - 4.42
Sachse	443	45	63	1.06 - 3.52
Seagoville	2,231	68	121	2.16 - 7.19
Sunnyvale	243	44	37	1.62 - 5.41
University Park	502	434	111	1.33 - 4.44
Wilmer	279	11	21	1.32 - 4.40
Wylie	11	7	2	0.97 - 3.23
Dallas County	115,410	10,731	13,175	1.50 – 5.00

*Sum of confirmed and probable cases by date of test collection, for 14 day timeframe from: October 25 – November 7, 2020. Most recent 2 weeks not included due to average reporting lag of 9.0 days. Case numbers are only for portions of each city which are within Dallas County.

**Estimated COVID-19 prevalence rate ranges calculated based on: Fox SJ, Lachmann M, Meyers LA. "COVID-19 Campus Introduction Risks for School Reopenings" presented to the TEA on July 22, 2020. Denominator populations are only for portions of each city which are within Dallas County.

https://sites.cns.utexas.edu/sites/default/files/cid/files/covid-19_school_introduction_risks.pdf?m=1595468503

Many Thanks to:

Our area hospitals and healthcare providers for reporting lab-confirmed COVID-19 cases

Our DCHHS Case and Contact Investigations Team volunteers from:

Dallas County Medical Society

UT Southwestern Medical School

Texas A&M College of Medicine

UTHealth School of Public Health

Retired School Nurses

New COVID-19 cases are reported as a daily aggregate, with this cumulative summary updated Tuesdays and Fridays.

DCHHS COVID-19 Summaries and Case Report Form are accessible at:

<https://www.dallascounty.org/departments/dchhs/2019-novel-coronavirus.php>

DCHHS Acute Communicable Disease Epidemiology Division: COVID-19@dallascounty.org