

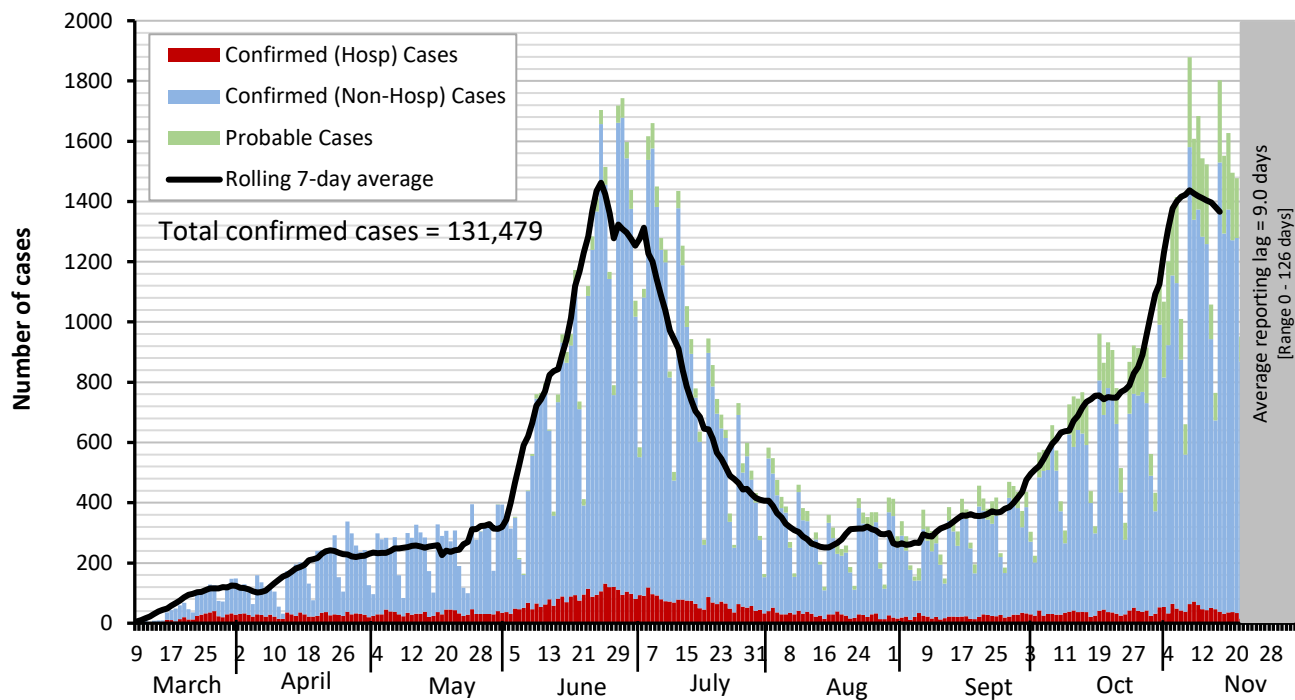


# Dallas County Health and Human Services 2019 Novel Coronavirus (COVID-19) Summary

December 4, 2020

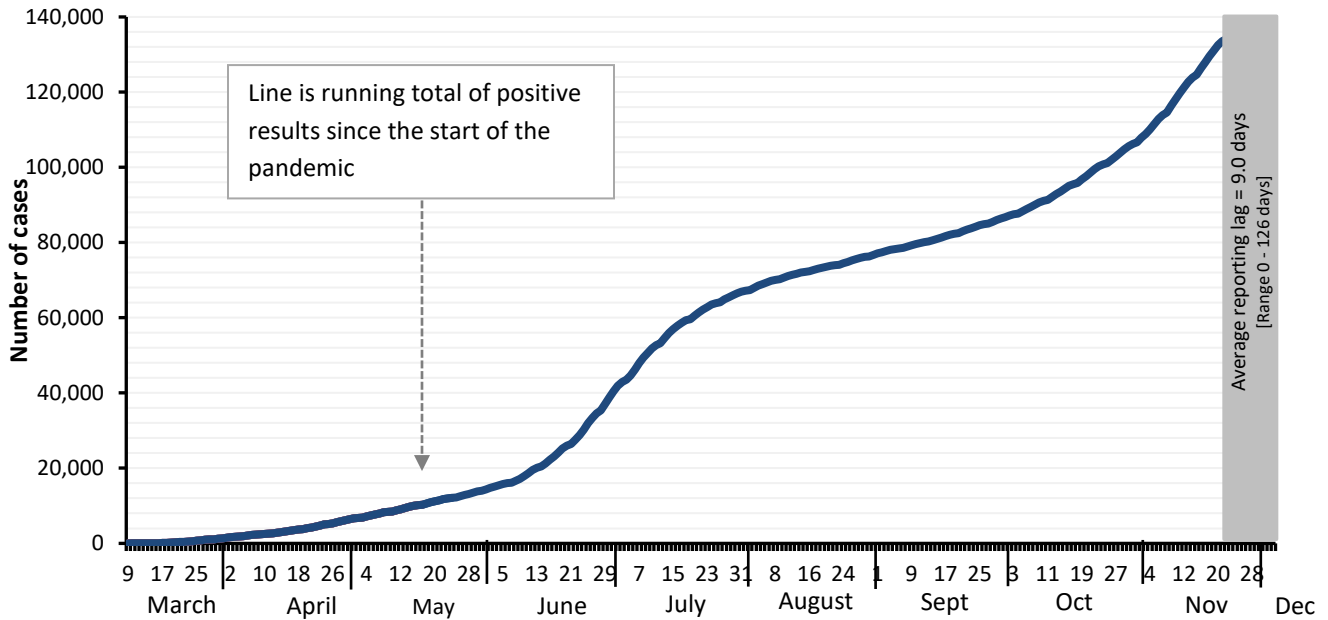
- As of December 4, 2020, DCHHS is reporting an additional 649 confirmed and 257 probable cases of 2019 novel coronavirus (COVID-19). The cumulative total number of confirmed cases in Dallas County is 131,479 including 1,229 confirmed deaths. The total probable case count is 13,166 including 38 probable deaths.
- The provisional seven-day average of daily new confirmed and probable cases (by date of test collection) for CDC week 48 (week ending 11/28/2020) was 1,069, which is a rate of 40.6 daily new cases per 100,000 residents.
- The percentage of respiratory specimens testing positive for SARS-CoV-2 remains high, with 22.3% of symptomatic patients presenting to area hospitals testing positive in week 48 (week ending 11/28/2020).
- Since November 1st, there have been 5,320 COVID-19 cases in school-aged children and staff reported from over 770 separate K-12 schools in Dallas County, including 849 staff members. Thirteen K-12 schools in Dallas County initiated temporary closures of their campuses to in-person instruction this past week due to COVID-19.
- There are currently 97 active long-term care facility outbreaks. This is the highest number of long-term care facilities with active outbreaks reported in Dallas County since the beginning of the pandemic. Over the past 30 days, a total of 927 COVID-19 cases have been reported from these facilities, including 351 staff members. Of these cases 42 have been hospitalized, and 29 have died, including 2 deaths of staff members.
- Twenty-two outbreaks of COVID-19 in congregate-living facilities (e.g. homeless shelters, group homes, and halfway homes) have been reported in the past 30 days associated with 168 cases, including one facility with 87 confirmed COVID-19 cases.

Figure 1. Confirmed COVID-19 positive cases by date of test collection, Dallas County: March 10 – December 4, 2020<sup>1-4</sup>



1. Data received as of 8:00 pm yesterday, for residents of Dallas County tested with known specimen collection dates. This does include delayed results from previous days. All data are preliminary and subject to change as cases continue to be investigated.
2. Data are incomplete for the most recent dates. Test results may be reported to DCHHS several days after the result. The reporting lag is calculated as time from specimen collection to receipt of test results. The average reporting lag is 9.0 days, with a range from 0 – 126 days.
3. This summary graph includes only confirmed cases based on molecular amplification detection test results.
4. Bars are the number of positive molecular amplification detection tests which were collected that day.
5. Rolling 7-day average is the average number of new confirmed COVID-19 cases collected 7 days prior to value.

**Figure 2. Cumulative confirmed COVID-19 cases by date of test collection, Dallas County: March 10 – December 4, 2020<sup>1-2</sup>**



1. Data received as of 8:00 pm yesterday, for residents of Dallas County tested with known specimen collection dates. This does include delayed results from previous days. All data are preliminary and subject to change as cases continue to be investigated.
2. Data are incomplete for the most recent dates. Test results may be reported to DCHHS several days after the result. The reporting lag is calculated as time from specimen collection to receipt of test results. The average reporting lag is 9.0 days, with a range from 0 – 126 days.

**Table 1. Characteristics of cumulative confirmed COVID-19 cases, Dallas County: March 9 – December 4, 2020**

		Confirmed (N)	Probable (N)	% of Total Cases <sup>+</sup>
Total Cases in Dallas County residents		N = 131,479	N=13,166	100%
Age Group (years)	0 to 17	15,049	3,211	13%
	18 to 40	59,720	5,730	46%
	41 to 64	43,743	3,236	33%
	≥65	11,989	774	9%
Sex	Female	67,359	6,311	52%
	Male	62,621	5,987	48%
Not Hospitalized (Includes: Outpatient, urgent care, drive-through, ED)		121,048	N/A	92%
Ever Hospitalized		10,431	N/A	8%

<sup>+</sup> Percentages calculated among cases with known age/sex

**Table 2. Number of confirmed COVID-19 cases by age group and month of collection, Dallas County**

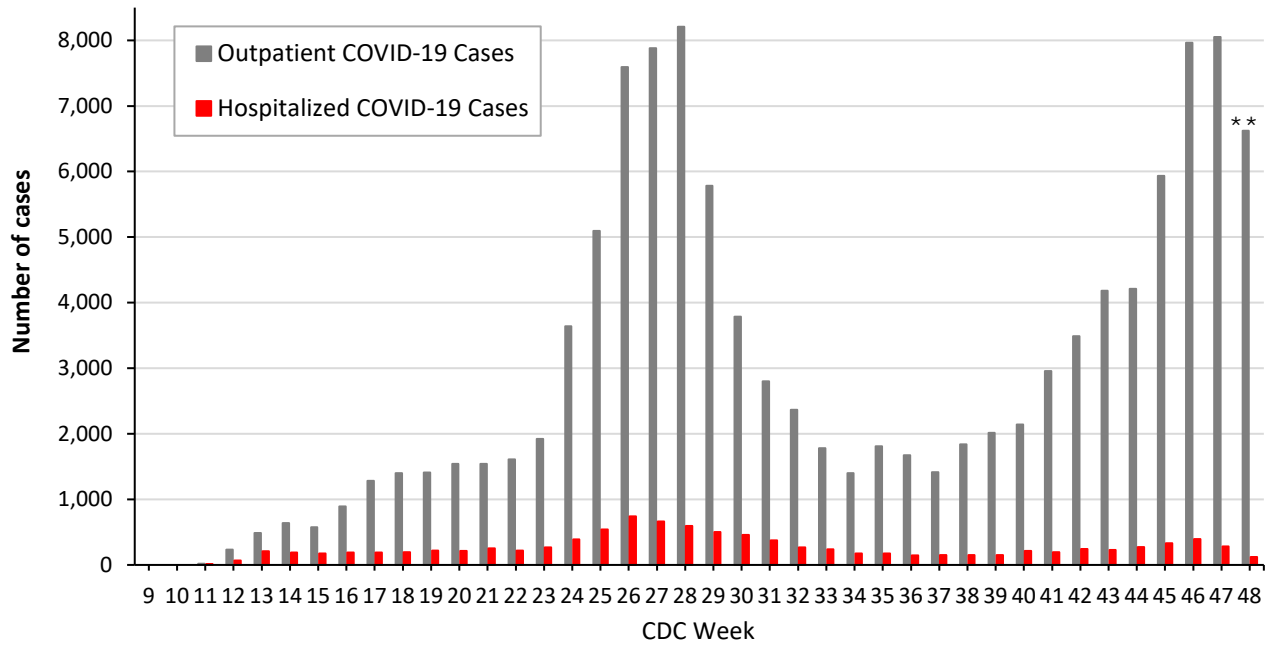
Age Group (in years)	0 to 17		18 to 22		23 to 39		40 to 64		≥65	
	N	%	N	%	N	%	N	%	N	%
March	27	2%	56	4%	436	32%	626	46%	213	16%
April	307	6%	314	6%	1,587	31%	2,229	44%	609	12%
May	779	10%	628	8%	2,463	33%	2,937	39%	755	10%
June	2,393	10%	2,389	10%	9,910	41%	7,842	32%	1,625	7%
July	3,207	12%	2,458	9%	9,035	34%	9,698	36%	2,287	9%
August	1,045	12%	1,004	11%	2,824	32%	3,150	35%	920	10%
September	946	11%	1,060	13%	2,885	34%	2,829	34%	682	8%
October	2,151	13%	1,453	9%	5,608	33%	5,842	35%	1,719	10%
November	4,168	13%	2,665	9%	10,655	34%	10,702	34%	3,142	10%

**Table 3. Confirmed and Probable School-Aged Cases (5 to 17 years) by CDC week of test collection**

City of Residence	Week 43 (ending 10/24)	Week 44 (ending 10/31)	Week 45 (ending 11/7)	Week 46 (ending 11/14)	Week 47 (ending 11/21)	Week 48 (ending 11/28)
Addison	1	0	0	3	2	3
Balch Springs	4	21	7	20	23	19
Carrollton	13	8	14	26	23	13
Cedar Hill	13	14	21	30	20	21
Cockrell Hill	0	1	2	3	0	8
Combine	0	0	0	0	0	0
Coppell	3	10	51	29	8	10
Dallas	330	283	397	596	566	373
DeSoto	26	12	15	21	20	20
Duncanville	11	11	17	26	26	13
Farmers Branch	2	4	7	13	10	10
Ferris	0	0	0	0	0	0
Garland	60	47	106	142	130	75
Glenn Heights	4	2	3	3	3	3
Grand Prairie	68	37	84	77	85	48
Highland Park	0	0	2	3	5	2
Hutchins	2	1	1	0	3	2
Irving	46	41	74	107	81	73
Lancaster	6	7	12	20	28	15
Lewisville	0	0	0	0	0	0
Mesquite	60	53	67	104	79	62
Ovilla	0	0	0	0	1	0
Richardson	18	26	19	24	21	22
Rowlett	9	18	17	22	27	15
Sachse	2	2	2	7	5	3
Seagoville	7	11	6	9	9	5
Sunnyvale	1	1	13	8	3	5
University Park	3	4	5	10	7	5
Wilmer	1	3	0	4	7	1
Wylie	0	0	1	0	1	2
Unknown	0	0	0	0	0	0
<b>Total</b>	<b>690</b>	<b>617</b>	<b>943</b>	<b>1,307</b>	<b>1,193</b>	<b>828</b>

*Includes only children ages 5 to 17 years of age residing in Dallas County, with positive molecular or antigen test results received as of 8:00 pm yesterday. Does not include verbal reports of test results that are not accompanied by documentation of test results from a laboratory or testing facility. All data are preliminary and subject to change as cases continue to be investigated.*

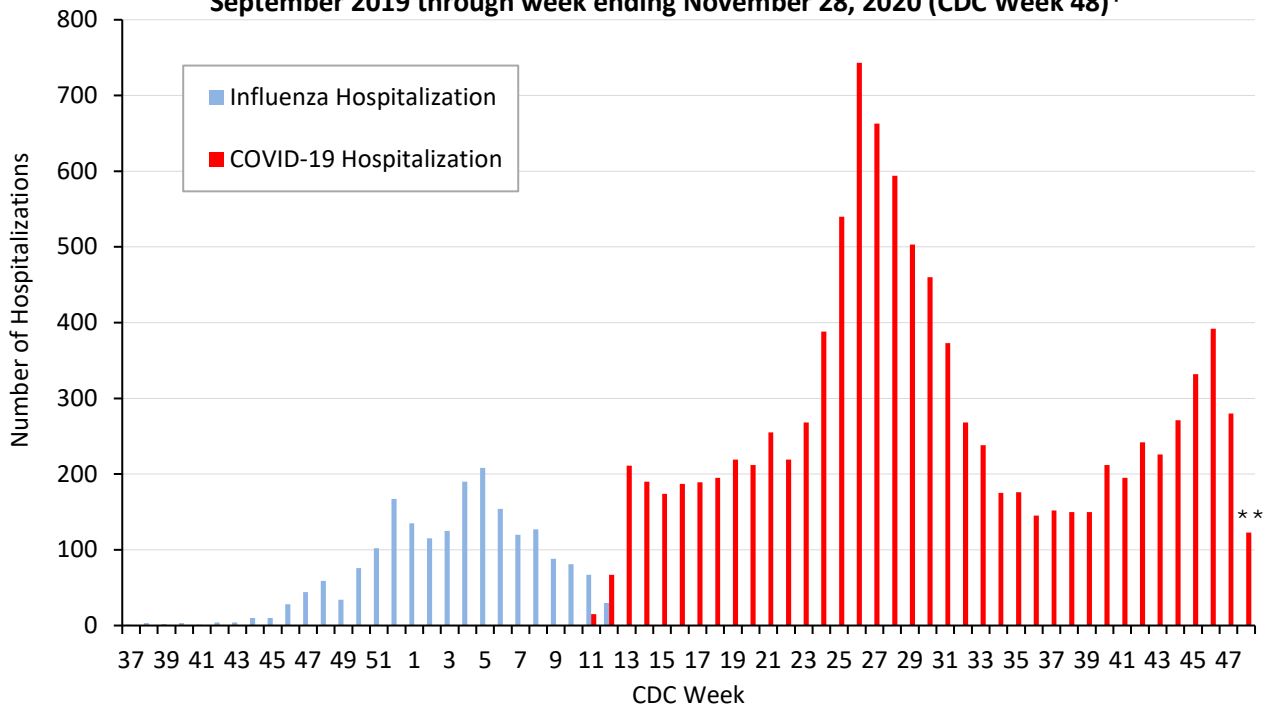
**Figure 3. Non-hospitalized and hospitalized confirmed COVID-19 cases by week of test collection, Dallas County: September 2019 through week ending November 28, 2020 (CDC Week 48)\***



\* Non-hospitalized includes all patients not admitted to acute-care hospitals (e.g. outpatient, urgent care, drive-through, ED-only, LTCF) and diagnosed with confirmed COVID-19. All data are preliminary and subject to change as cases continue to be received and investigated.

\*\* Data are incomplete for the most recent dates. Test results may be reported to DCHHS several days after the result. The reporting lag is calculated as time from specimen collection to receipt of molecular amplification detection test results.

**Figure 4. Influenza and confirmed COVID-19 hospitalizations by week of admission, Dallas County: September 2019 through week ending November 28, 2020 (CDC Week 48)\***



\* Hospitalized Dallas County residents diagnosed with confirmed COVID-19 by molecular amplification detection testing. All data are preliminary and subject to change as cases continue to be received and investigated.

\*\* Data are incomplete for the most recent dates. Test results may be reported to DCHHS several days after the result. The reporting lag is calculated as time from specimen collection to receipt of test results.

**Table 4. Characteristics of cumulative hospitalized confirmed COVID-19 cases, Dallas County: March 10 – December 4, 2020**

		Hospitalized Cases	%
<i>Ever Hospitalized</i>		N = 10,431	8% of Total Cases
Admitted to Intensive Care Unit		2,438	23%
Mechanical Ventilation		1,268	12%
Sex	Male	5,444	52%
	Female	4,985	48%
Age Group (years)	0-17	275	3%
	18-40	2,293	22%
	41-64	4,409	43%
	≥65	3,353	32%
Presence of ≥1 high risk condition		5,747	55%
Diabetes		3,200	31%
Lung Disease (e.g. COPD, asthma)		1,139	11%
Heart Disease (e.g. CHF)		1,364	13%
Kidney Disease (e.g. ESRD, dialysis)		1,041	10%
Cancer, Immune-compromise		727	7%
Obesity		1,817	17%
Race/ Ethnicity	White	1,939	19%*
	Hispanic	4,780	46%*
	Black	2,387	23%*
	Other	398	4%*
	Non-reported/ Unknown	957	9%

\* Percentages can also be calculated to exclude cases for which race/ethnicity was not reported

**Table 5. Characteristics of cumulative confirmed COVID-19 deaths, Dallas County: March 10 – December 4, 2020**

<i>Death classified as confirmed if decedent was a Dallas County resident with a positive molecular test. Data are obtained from ME office, hospitals, and vital statistics.</i>		Confirmed Deaths	%
		N = 1,229	0.9% of Total Cases
Sex	Male	773	63%
	Female	456	37%
Age Group (years)	0-17	2	<1%
	18-40	55	4%
	41-64	406	33%
	≥65	766	62%
Resident of a Long-Term Care Facility		281	23%
Presence of ≥1 high risk condition		933	76%
Diabetes		578	47%
Race/ Ethnicity	White	304	<b>24%</b> (29% of population) <sup>1</sup>
	Hispanic	572	<b>47%</b> (41% of population) <sup>1</sup>
	Black	300	<b>25%</b> (24% of population) <sup>1</sup>
	Asian	36	<b>3%</b> (7% of population) <sup>1</sup>

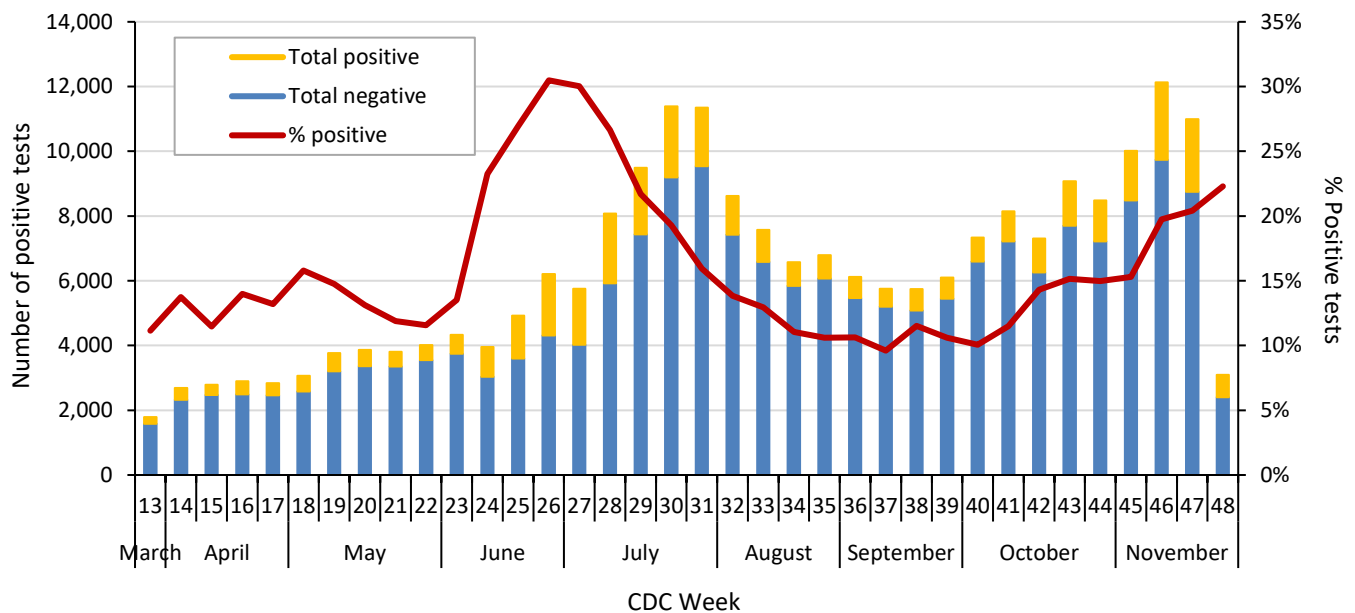
<sup>1</sup> 2019 U.S. Census population estimates for Dallas County

**Table 6. Respiratory virus testing by North Texas hospitals participating in public health surveillance programs: September 20, 2020 – November 28, 2020 (CDC Weeks 39-48)<sup>1-2</sup>**

Week Ending		9/26	10/3	10/10	10/17	10/24	10/31	11/7	11/14	11/21	11/28
SARS-CoV-2	Positive	647	737	936	1,046	1,374	1,271	1,533	2,397	2,244	691
	Total Tests	6,098	7,331	8,148	7,308	9,072	8,487	10,018	12,134	10,989	3,098
Novel Coronavirus	% Positive	10.6%	10.1%	11.5%	14.3%	15.1%	15.0%	15.3%	19.8%	20.4%	22.3%
Influenza	Positive	0	0	0	0	2	0	0	0	0	0
	Total Tests	215	231	91	105	308	302	137	178	207	144
	% Positive	0%	0%	0%	0%	0.6%	0%	0%	0%	0%	0%
Seasonal (non-SARS-2) Coronavirus	Positive	0	0	0	0	0	0	0	0	0	0
	Total Tests	72	60	69	83	84	49	104	143	135	111
	% Positive	0%	0%	0%	0%	0%	0%	0%	0%	0%	0%
Adenovirus (respiratory)	Positive	3	2	1	4	2	2	1	4	7	6
	Total Tests	168	162	69	83	193	164	104	143	135	111
	% Positive	1.8%	1.2%	1.4%	4.8%	1.0%	1.2%	1.0%	2.8%	5.2%	5.4%
Metapneumovirus	Positive	0	0	0	0	0	0	0	1	0	0
	Total Tests	168	162	69	83	193	164	104	143	135	111
	% Positive	0%	0%	0%	0%	0%	0%	0%	0.7%	0%	0%
Rhinovirus/Enterovirus	Positive	26	23	21	36	48	37	42	52	58	45
	Total Tests	168	162	69	83	193	164	137	143	135	111
	% Positive	15.5%	14.2%	30.4%	43.4%	24.9%	22.6%	30.7%	36.4%	43.0%	40.5%
RSV	Positive	0	0	0	0	0	0	0	0	0	0
	Total Tests	189	185	91	105	220	199	137	178	187	144
	% Positive	0%	0%	0%	0%	0%	0%	0%	0%	0%	0%

Data sources: National Respiratory and Enteric Virus Surveillance System and an additional subset of hospitals voluntarily reporting surveillance PCR data directly to DCHHS. Testing denominators include out-of-county patients and testing performed only through hospitals in Dallas County. (Does not include FEMA drive-thru clinics). Data are incomplete for the most recent dates.

**Figure 5. SARS-CoV-2 positive PCR tests reported to DCHHS by hospital laboratories: March 22 – November 28, 2020 (CDC Weeks 26-48)<sup>1-2</sup>**



1. Data received as of 8:00 pm yesterday. All data are preliminary and subject to change as cases continue to be received and investigated.
2. Data are incomplete for the most recent dates. Test results may be reported to DCHHS several days after the result.

**Table 7. Summary of weekly COVID-19 hospitalizations and deaths from Dallas County hospitals, Vital Statistics and Medical Examiner’s office <sup>1-4</sup>**

Week Ending	09/26	10/03	10/10	10/17	10/24	10/31	11/7	11/14	11/21	11/28	09/08/19–Present
<b>CDC Week</b>	<b>39</b>	<b>40</b>	<b>41</b>	<b>42</b>	<b>43</b>	<b>44</b>	<b>45</b>	<b>46</b>	<b>47</b>	<b>48</b>	<b>Present</b>
COVID-19 hospitalizations <sup>1</sup>	150	212	195	242	226	271	332	392	280	123	10,431*
COVID-19 ICU admissions <sup>1</sup>	35	49	48	56	50	62	59	82	53	25	2,438*
Probable COVID-19-associated deaths <sup>2</sup>	1	0	0	0	3	3	7	2	4	3	38*
Confirmed COVID-19-associated deaths <sup>3</sup>	13	14	15	17	22	26	22	22	16	13	1,229*

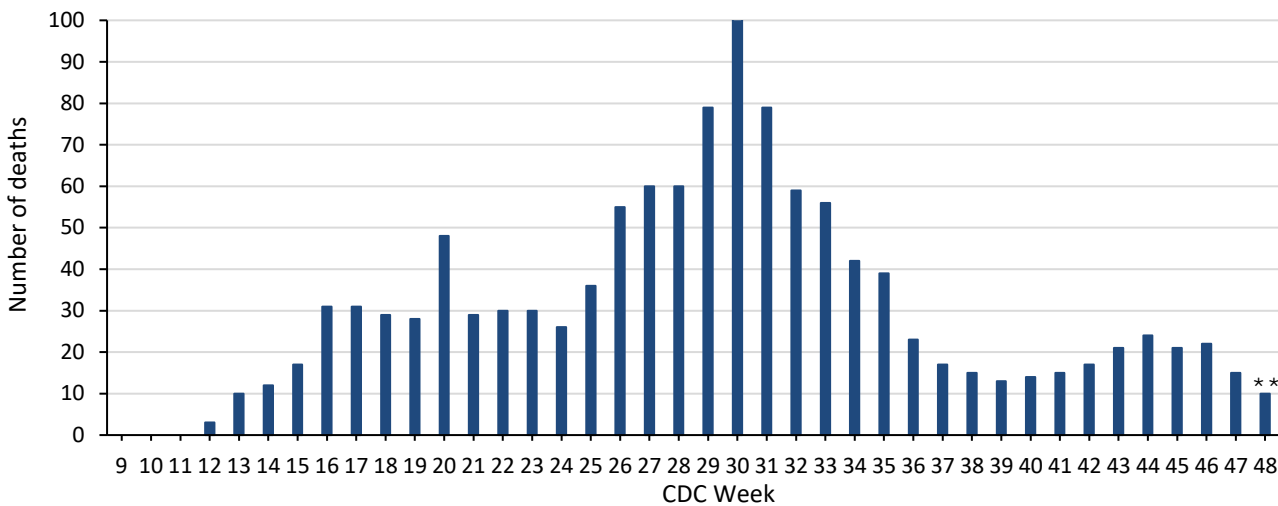
\* All data are preliminary and subject to change as cases continue to be received and investigated.

<sup>1</sup> Reflects all COVID-19-associated hospitalizations and intensive care unit admissions reported from area hospitals within Dallas County by week of admission. Hospitalizations are inclusive of ICU admissions. Data are preliminary and include reports received as of 8:00 pm yesterday.

<sup>2</sup> Probable COVID-19 deaths as defined by CSTE interim case classification criteria--meeting vital records criteria without molecular lab test confirmation.

<sup>3</sup> Confirmed COVID-19 deaths as defined by a positive molecular amplification detection test *and* any of the following: (1) death certificate denotation, (2) medical record documentation of compatible symptoms and clear progression from illness to death, or (3) determination by the County Medical Examiner’s office (ME) of no alternate cause of death. Does not include possible COVID-19-associated deaths with pending determination of cause of death.

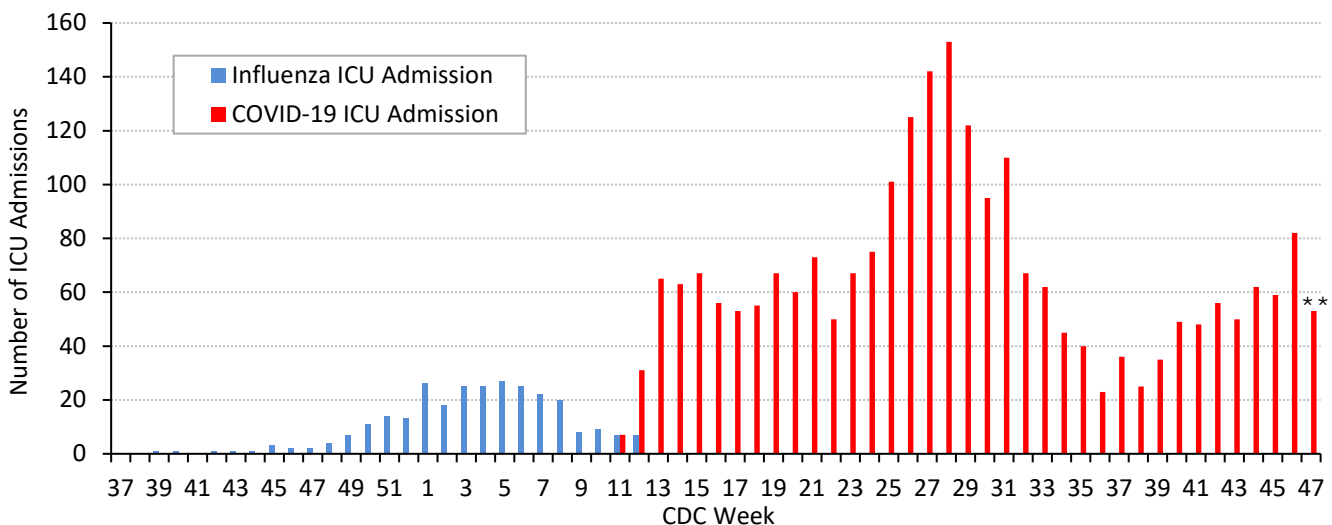
**Figure 6. Confirmed COVID-19-associated deaths by week of death, Dallas County: March 2019 through week ending November 28, 2020 (CDC Week 48)**



\* Dallas County residents diagnosed with confirmed COVID-19 by molecular amplification detection testing.

\*\* All data are preliminary and subject to change as cases continue to be received and investigated.

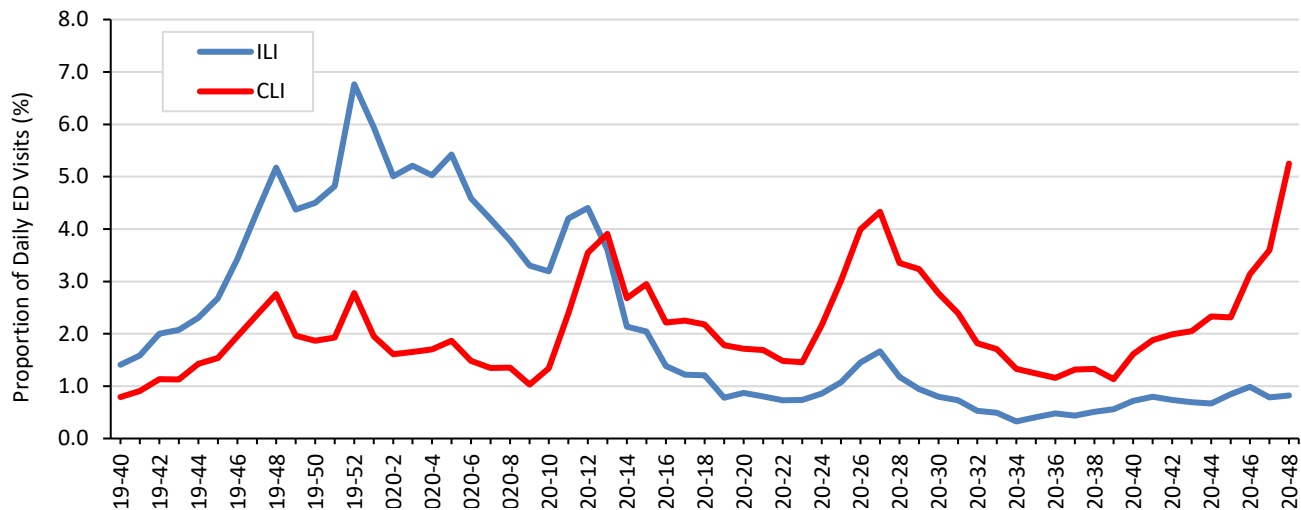
**Figure 7. Intensive care unit hospitalizations for influenza and COVID-19 by week of admission, Dallas County: September 2019 through week ending November 28, 2020 (CDC Week 48)\***



\* New ICU admissions of Dallas County residents reported with confirmed COVID-19 by molecular amplification detection testing as of 8:00 pm yesterday. Hospitalized patients with self-reported residence from outside of Dallas County are not included.

\*\* All data are preliminary and subject to change as cases continue to be received and investigated.

**Figure 8. Syndromic surveillance of emergency department visits for COVID-like illness (CLI)\* and Influenza-like illness (ILI)\*\*, Dallas County: September 29, 2019 – November 28, 2020 (CDC Week 48)**



ESSENCE Data is from 18 hospital emergency departments voluntarily reporting numbers of persons presenting with self-reported chief complaints.

\* CLI is defined as chief complaint of fever and cough or shortness of breath or difficulty breathing.

\*\*ILI is defined as chief complaint of fever and cough or sore throat or mention of influenza.

**Table 8. Summary of weekly COVID-19 confirmed and probable cases and deaths, Dallas County (CDC Weeks 25 - 48)**

CDC Week	Week Ending	Total Confirmed and Probable Cases	Total School-Aged Cases (5 to 17 years)	Daily Average New Confirmed and Probable Cases*	Daily Average New Confirmed and Probable Deaths**	Percentage of Tests Positive for SARS-CoV-2***
25	6/20/2020	5,859	472	837	5	26.9%
26	6/27/2020	8,611	647	1,230	8	30.5%
27	7/4/2020	8,943	699	1,278	9	30.0%
28	7/11/2020	9,192	865	1,313	9	26.6%
29	7/18/2020	6,602	688	943	11	21.7%
30	7/25/2020	4,520	493	646	15	19.3%
31	8/1/2020	3,350	418	479	12	15.9%
32	8/8/2020	2,846	320	407	9	13.8%
33	8/15/2020	2,161	183	309	9	13.0%
34	8/22/2020	1,758	188	251	6	11.0%
35	8/29/2020	2,195	188	314	6	10.6%
36	9/5/2020	2,067	161	294	3	10.6%
37	9/12/2020	1,870	198	267	3	9.6%
38	9/19/2020	2,237	238	320	2	11.5%
39	9/26/2020	2,499	261	357	2	10.6%
40	10/3/2020	2,659	307	380	2	10.1%
41	10/10/2020	3,570	451	510	2	11.5%
42	10/17/2020	4,460	554	637	2	14.3%
43	10/24/2020	5,283	690	754	4	15.1%
44	10/31/2020	5,425	617	775	4	15.0%
45	11/7/2020	7,651	943	1,093	4	15.3%
46	11/14/2020	9,956	1,307	1,422	3	19.8%
47	11/21/2020	9,672	1,193	1,381	3	20.4%
48	11/28/2020	7,480	828	1,069	2	22.3%

\* For 7-day time period for respective CDC week by date of test collection

\*\* For 7-day time period for respective CDC week by date of death

\*\*\* See Table 6 for historical data



**Table 9. Cumulative COVID-19 cases by city of residence within Dallas County as of December 4, 2020***(e.g. Does not include cases who reside in portions of cities which are not within Dallas County.)*

<i>City of Residence</i>	<b>Confirmed Cases (N=131,479)</b>	<b>Probable Cases (N=13,166)</b>	<b>Total Confirmed + Probable Cases reported in 14 day period from 11/8 – 11/21*</b>	<b>Estimated COVID-19 Prevalence (%) in 14 day period from 11/8 – 11/21** (lower – upper estimate range)</b>
Addison	607	76	113	2.08 - 6.95
Balch Springs	1,549	126	248	2.98 - 9.92
Carrollton	2,277	236	334	1.76 - 5.88
Cedar Hill	2,279	198	364	2.31 - 7.68
Cockrell Hill	299	38	38	2.74 - 9.15
Combine	8	1	3	1.02 - 3.39
Coppell	984	268	239	1.77 - 5.89
Dallas	65,351	6,755	9,638	2.29 - 7.65
DeSoto	2,517	128	355	2.01 - 6.70
Duncanville	2,223	202	353	2.73 - 9.11
Farmers Branch	1,547	197	257	1.60 - 5.34
Ferris	7	0	0	N/A
Garland	12,100	776	1,976	2.47 - 8.25
Glenn Heights	323	22	66	1.93 - 6.44
Grand Prairie	7,033	1,005	974	2.19 - 7.30
Highland Park	255	85	54	1.78 - 5.95
Hutchins	344	9	41	2.10 - 6.99
Irving	12,664	888	1,615	2.02 - 6.73
Lancaster	2,230	128	380	2.91 - 9.69
Lewisville	1	1	0	N/A
Mesquite	7,820	817	1,201	2.56 - 8.53
Ovilla	6	1	6	4.83 - 16.09
Richardson	2,654	310	434	1.51 - 5.02
Rowlett	2,162	140	433	2.20 - 7.33
Sachse	544	52	135	2.27 - 7.55
Seagoville	2,340	82	117	2.08 - 6.95
Sunnyvale	307	49	59	2.59 - 8.62
University Park	694	552	145	1.74 - 5.80
Wilmer	331	14	42	2.64 - 8.80
Wylie	23	10	8	3.88 - 12.92
<b>Dallas County</b>	<b>131,479</b>	<b>12,191</b>	<b>19,628</b>	<b>2.23 - 7.45</b>

\*Sum of confirmed and probable cases by date of test collection, for 14 day timeframe from: November 8 – November 21, 2020. Most recent 2 weeks not included due to average reporting lag of 9.0 days. Case numbers are only for portions of each city which are within Dallas County.

\*\*Estimated COVID-19 prevalence rate ranges calculated based on: Fox SJ, Lachmann M, Meyers LA. "COVID-19 Campus Introduction Risks for School Reopenings" presented to the TEA on July 22, 2020. Denominator populations are only for portions of each city which are within Dallas County.

[https://sites.cns.utexas.edu/sites/default/files/cid/files/covid-19\\_school\\_introduction\\_risks.pdf?m=1595468503](https://sites.cns.utexas.edu/sites/default/files/cid/files/covid-19_school_introduction_risks.pdf?m=1595468503)

***Many Thanks to:***

Our area hospitals and healthcare providers for reporting lab-confirmed COVID-19 cases

Our DCHHS Case and Contact Investigations Team volunteers from:

Dallas County Medical Society

UT Southwestern Medical School

Texas A&M College of Medicine

UTHealth School of Public Health

Retired School Nurses

New COVID-19 cases are reported as a daily aggregate, with this cumulative summary updated Tuesdays and Fridays.

DCHHS COVID-19 Summaries and Case Report Form are accessible at:

<https://www.dallascounty.org/departments/dchhs/2019-novel-coronavirus.php>

**DCHHS Acute Communicable Disease Epidemiology Division:** COVID-19@dallascounty.org