

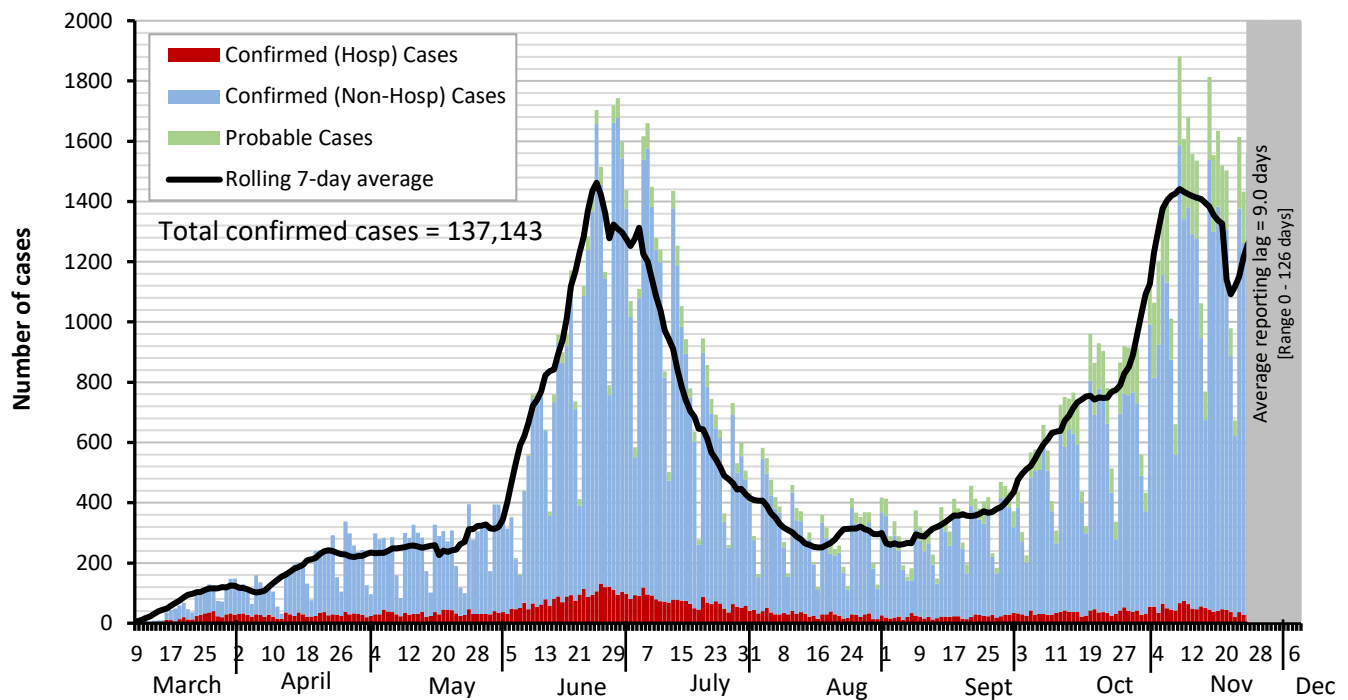


Dallas County Health and Human Services 2019 Novel Coronavirus (COVID-19) Summary

December 8, 2020

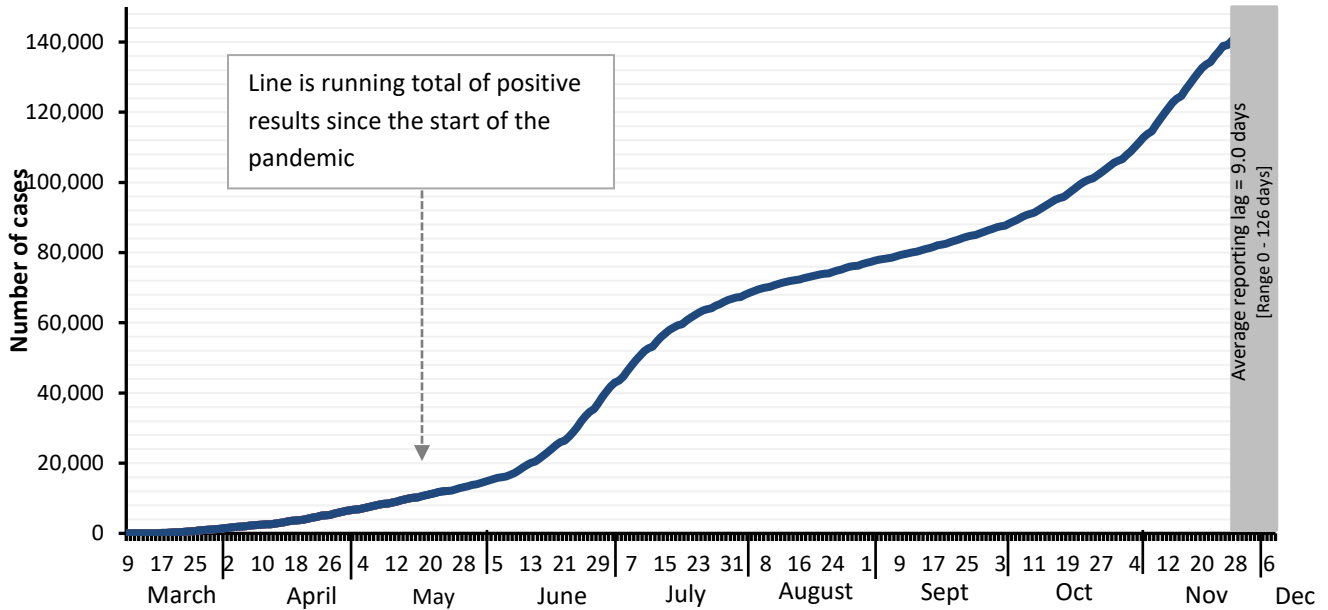
- As of December 8, 2020, DCHHS is reporting an additional 860 confirmed and 245 probable cases of 2019 novel coronavirus (COVID-19). The cumulative total number of confirmed cases in Dallas County is 137,143 including 1,245 confirmed deaths. The total probable case count is 13,797 including 39 probable deaths.
- The provisional seven-day average of daily new confirmed and probable cases (by date of test collection) for CDC week 48 (week ending 11/28/2020) was 1,117, which is a rate of 42.4 daily new cases per 100,000 residents.
- The percentage of respiratory specimens testing positive for SARS-CoV-2 remains high, with 22.3% of symptomatic patients presenting to area hospitals testing positive in week 48 (week ending 11/28/2020).
- Over the past 30 days, there have been 4,520 COVID-19 cases in school-aged children and staff reported from 735 separate K-12 schools in Dallas County, including 681 staff members. Of these cases, 534 have been associated with extracurricular activities, including athletics.
- There are currently 101 active long-term care facility outbreaks. This is the highest number of long-term care facilities with active outbreaks reported in Dallas County since the beginning of the pandemic. Over the past 30 days, a total of 857 COVID-19 cases have been reported from these facilities, including 328 staff members. Of these cases 38 have been hospitalized, and 30 have died, including 2 deaths of staff members.
- Twenty-four outbreaks of COVID-19 in congregate-living facilities (e.g. homeless shelters, group homes, and halfway homes) have been reported in the past 30 days associated with 155 cases, including 5 hospitalizations and 2 deaths. One facility has reported 87 confirmed COVID-19 cases.

Figure 1. Confirmed COVID-19 positive cases by date of test collection, Dallas County: March 10 – December 8, 2020¹⁻⁴



1. Data received as of 8:00 pm yesterday, for residents of Dallas County tested with known specimen collection dates. This does include delayed results from previous days. All data are preliminary and subject to change as cases continue to be investigated.
2. Data are incomplete for the most recent dates. Test results may be reported to DCHHS several days after the result. The reporting lag is calculated as time from specimen collection to receipt of test results. The average reporting lag is 9.0 days, with a range from 0 – 126 days.
3. This summary graph includes only confirmed cases based on molecular amplification detection test results.
4. Bars are the number of positive molecular amplification detection tests which were collected that day.
5. Rolling 7-day average is the average number of new confirmed COVID-19 cases collected 7 days prior to value.

Figure 2. Cumulative confirmed COVID-19 cases by date of test collection, Dallas County: March 10 – December 8, 2020¹⁻²



1. Data received as of 8:00 pm yesterday, for residents of Dallas County tested with known specimen collection dates. This does include delayed results from previous days. All data are preliminary and subject to change as cases continue to be investigated.
2. Data are incomplete for the most recent dates. Test results may be reported to DCHHS several days after the result. The reporting lag is calculated as time from specimen collection to receipt of test results. The average reporting lag is 9.0 days, with a range from 0 – 126 days.

Table 1. Characteristics of cumulative confirmed COVID-19 cases, Dallas County: March 9 – December 8, 2020

		Confirmed (N)	Probable (N)	% of Total Cases ⁺
Total Cases in Dallas County residents		N = 137,143	N=13,797	100%
Age Group (years)	0 to 17	15,915	3,346	13%
	18 to 40	62,101	5,968	46%
	41 to 64	45,553	3,397	33%
	≥65	12,571	863	9%
Sex	Female	70,411	6,654	52%
	Male	65,208	6,261	48%
Not Hospitalized (Includes: Outpatient, urgent care, drive-through, ED)		126,407	N/A	92%
Ever Hospitalized		10,736	N/A	8%

⁺ Percentages calculated among cases with known age/sex

Table 2. Number of confirmed COVID-19 cases by age group and month of collection, Dallas County

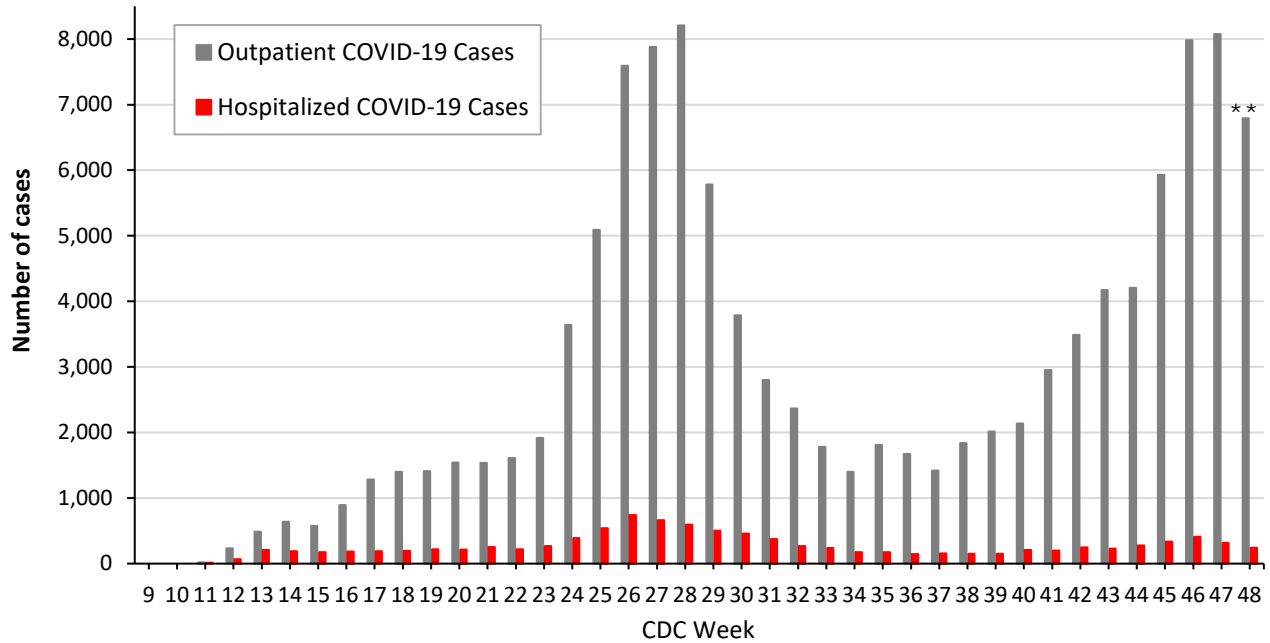
Age Group (in years)	0 to 17		18 to 22		23 to 39		40 to 64		≥65	
Month of Diagnosis	N	%	N	%	N	%	N	%	N	%
March	27	2%	56	4%	436	32%	626	46%	213	16%
April	307	6%	314	6%	1,587	31%	2,229	44%	609	12%
May	779	10%	627	8%	2,462	33%	2,935	39%	755	10%
June	2,393	10%	2,389	10%	9,907	41%	7,842	32%	1,625	7%
July	3,207	12%	2,458	9%	9,035	34%	9,697	36%	2,287	9%
August	1,045	12%	1,004	11%	2,823	32%	3,149	35%	920	10%
September	947	11%	1,060	13%	2,886	34%	2,831	34%	683	8%
October	2,149	13%	1,454	9%	5,607	33%	5,842	35%	1,718	10%
November	4,348	13%	2,777	8%	11,080	34%	11,170	34%	3,305	10%
December (As of 12/7/20)	713	16%	384	8%	1,484	33%	1,501	33%	456	10%

Table 3. Confirmed and Probable School-Aged Cases (5 to 17 years) by CDC week of test collection

City of Residence	Week 43 (ending 10/24)	Week 44 (ending 10/31)	Week 45 (ending 11/7)	Week 46 (ending 11/14)	Week 47 (ending 11/21)	Week 48 (ending 11/28)
Addison	1	0	0	3	2	3
Balch Springs	4	21	7	20	23	18
Carrollton	13	8	14	26	23	13
Cedar Hill	13	14	21	30	20	21
Cockrell Hill	0	1	2	3	0	6
Combine	0	0	0	0	0	0
Coppell	3	10	51	29	8	11
Dallas	330	283	397	597	562	391
DeSoto	26	12	15	21	20	20
Duncanville	11	11	17	26	26	14
Farmers Branch	2	4	7	13	10	10
Ferris	0	0	0	0	0	0
Garland	59	46	104	138	131	77
Glenn Heights	4	2	3	3	3	4
Grand Prairie	68	37	84	79	85	49
Highland Park	0	0	2	3	5	2
Hutchins	2	1	1	0	3	2
Irving	46	40	73	107	80	75
Lancaster	6	7	12	20	28	15
Lewisville	0	0	0	0	0	0
Mesquite	60	53	67	104	81	66
Ovilla	0	0	0	0	1	0
Richardson	18	26	19	24	22	22
Rowlett	9	18	17	22	26	16
Sachse	2	2	2	7	6	3
Seagoville	7	11	6	9	9	5
Sunnyvale	1	1	13	8	3	6
University Park	3	4	5	10	7	6
Wilmer	1	3	0	4	7	1
Wylie	0	0	1	0	1	1
Unknown	0	0	0	0	0	0
Total	689	615	940	1,306	1,192	857

Includes only children ages 5 to 17 years of age residing in Dallas County, with positive molecular or antigen test results received as of 8:00 pm yesterday. Does not include verbal reports of test results that are not accompanied by documentation of test results from a laboratory or testing facility. All data are preliminary and subject to change as cases continue to be investigated.

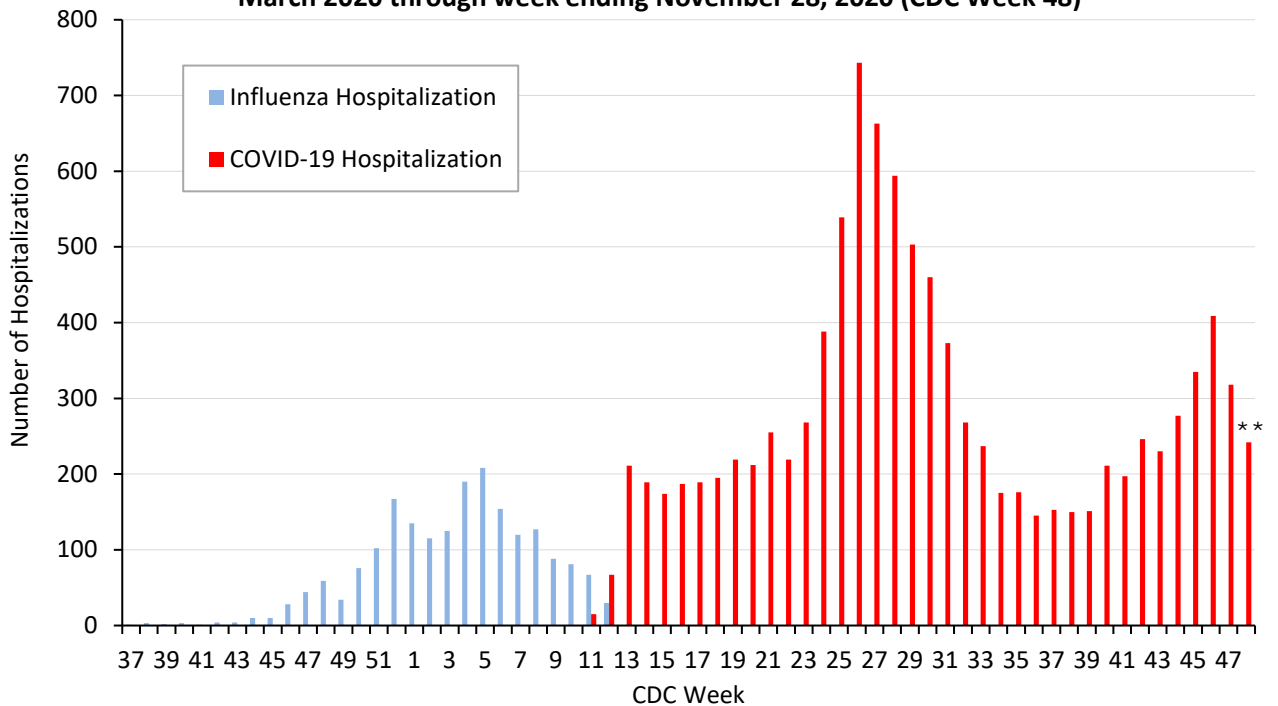
Figure 3. Non-hospitalized and hospitalized confirmed COVID-19 cases by week of test collection, Dallas County: March 2020 through week ending November 28, 2020 (CDC Week 48)*



* Non-hospitalized includes all patients not admitted to acute-care hospitals (e.g. outpatient, urgent care, drive-through, ED-only, LTCF) and diagnosed with confirmed COVID-19. All data are preliminary and subject to change as cases continue to be received and investigated.

** Data are incomplete for the most recent dates. Test results may be reported to DCHHS several days after the result. The reporting lag is calculated as time from specimen collection to receipt of molecular amplification detection test results.

Figure 4. Influenza and confirmed COVID-19 hospitalizations by week of admission, Dallas County: March 2020 through week ending November 28, 2020 (CDC Week 48)*



* Hospitalized Dallas County residents diagnosed with confirmed COVID-19 by molecular amplification detection testing. All data are preliminary and subject to change as cases continue to be received and investigated.

** Data are incomplete for the most recent dates. Test results may be reported to DCHHS several days after the result. The reporting lag is calculated as time from specimen collection to receipt of test results.

Table 4. Characteristics of cumulative hospitalized confirmed COVID-19 cases, Dallas County: March 10 – December 8, 2020

		Hospitalized Cases	%
<i>Ever Hospitalized</i>		N = 10,736	8% of Total Cases
Admitted to Intensive Care Unit		2,491	23%
Mechanical Ventilation		1,290	12%
Sex	Male	5,608	52%
	Female	5,125	48%
Age Group (years)	0-17	279	3%
	18-40	2,338	22%
	41-64	4,638	43%
	≥65	3,480	32%
Presence of ≥1 high risk condition		5,893	55%
Diabetes		3,281	31%
Lung Disease (e.g. COPD, asthma)		1,167	11%
Heart Disease (e.g. CHF)		1,392	13%
Kidney Disease (e.g. ESRD, dialysis)		1,071	10%
Cancer, Immune-compromise		746	7%
Obesity		1,881	18%
Race/ Ethnicity	White	2,059	19%*
	Hispanic	4,828	45%*
	Black	2,463	23%*
	Other	413	4%*
	Non-reported/ Unknown	957	9%

* Percentages can also be calculated to exclude cases for which race/ethnicity was not reported

Table 5. Characteristics of cumulative confirmed COVID-19 deaths, Dallas County: March 10 – December 8, 2020

<i>Death classified as confirmed if decedent was a Dallas County resident with a positive molecular test. Data are obtained from ME office, hospitals, and vital statistics.</i>		Confirmed Deaths	%
		N = 1,245	0.9% of Total Cases
Sex	Male	783	63%
	Female	462	37%
Age Group (years)	0-17	2	<1%
	18-40	56	4%
	41-64	409	33%
	≥65	778	62%
Resident of a Long-Term Care Facility		283	23%
Presence of ≥1 high risk condition		947	76%
Diabetes		587	47%
Race/ Ethnicity	White	303	24% (29% of population) ¹
	Hispanic	577	46% (41% of population) ¹
	Black	303	25% (24% of population) ¹
	Asian	37	3% (7% of population) ¹

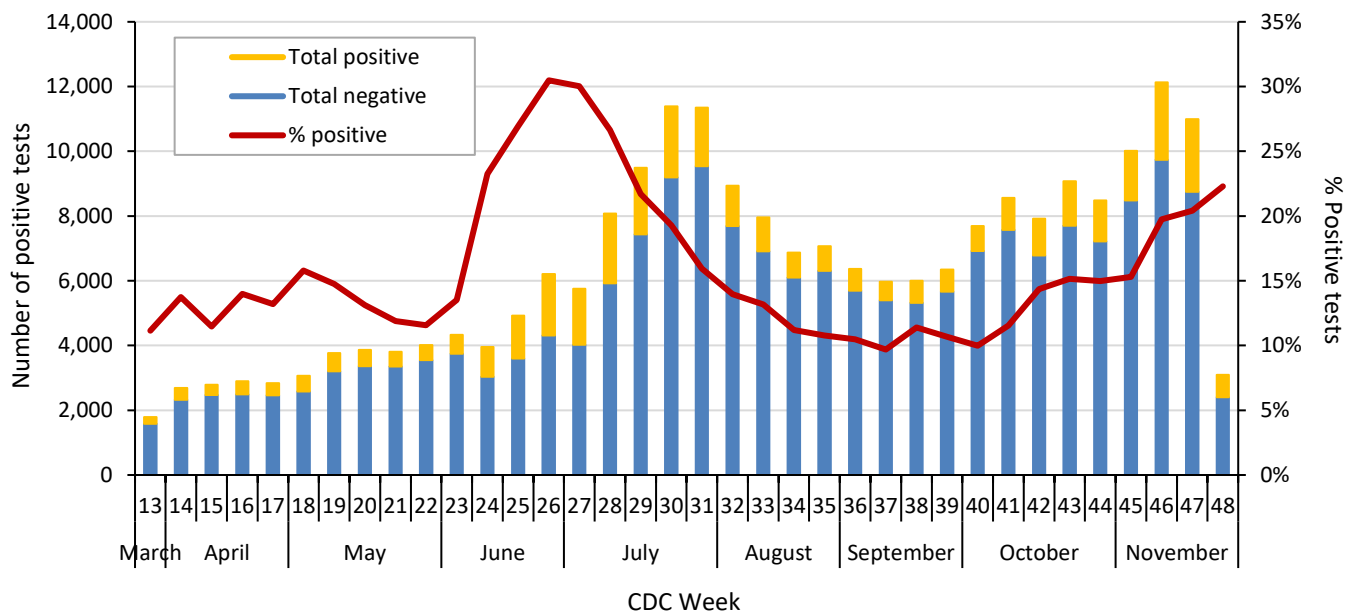
¹ 2019 U.S. Census population estimates for Dallas County

Table 6. Respiratory virus testing by North Texas hospitals participating in public health surveillance programs: September 20, 2020 – November 28, 2020 (CDC Weeks 39-48)¹⁻²

Week Ending		9/26	10/3	10/10	10/17	10/24	10/31	11/7	11/14	11/21	11/28
SARS-CoV-2	Positive	678	768	989	1136	1374	1271	1533	2397	2244	691
	Total Tests	6,344	7,688	8,565	7,918	9,072	8,487	10,018	12,134	10,989	3,098
Novel Coronavirus	% Positive	10.7%	10.0%	11.5%	14.3%	15.1%	15.0%	15.3%	19.8%	20.4%	22.3%
Influenza	Positive	0	0	0	0	2	0	0	0	0	0
	Total Tests	215	231	91	105	308	302	137	178	207	144
	% Positive	0%	0%	0%	0%	0.6%	0%	0%	0%	0%	0%
Seasonal (non-SARS-2) Coronavirus	Positive	0	0	0	0	0	0	0	0	0	0
	Total Tests	72	60	69	83	84	49	104	143	135	111
	% Positive	0%	0%	0%	0%	0%	0%	0%	0%	0%	0%
Adenovirus (respiratory)	Positive	3	2	1	4	2	2	1	4	7	6
	Total Tests	168	162	69	83	193	164	104	143	135	111
	% Positive	1.8%	1.2%	1.4%	4.8%	1.0%	1.2%	1.0%	2.8%	5.2%	5.4%
Metapneumovirus	Positive	0	0	0	0	0	0	0	1	0	0
	Total Tests	168	162	69	83	193	164	104	143	135	111
	% Positive	0%	0%	0%	0%	0%	0%	0%	0.7%	0%	0%
Rhinovirus/Enterovirus	Positive	26	23	21	36	48	37	42	52	58	45
	Total Tests	168	162	69	83	193	164	137	143	135	111
	% Positive	15.5%	14.2%	30.4%	43.4%	24.9%	22.6%	30.7%	36.4%	43.0%	40.5%
RSV	Positive	0	0	0	0	0	0	0	0	0	0
	Total Tests	189	185	91	105	220	199	137	178	187	144
	% Positive	0%	0%	0%	0%	0%	0%	0%	0%	0%	0%

Data sources: National Respiratory and Enteric Virus Surveillance System and an additional subset of hospitals voluntarily reporting surveillance PCR data directly to DCHHS. Testing denominators include out-of-county patients and testing performed only through hospitals in Dallas County. (Does not include FEMA drive-thru clinics). Data are incomplete for the most recent dates.

Figure 5. SARS-CoV-2 positive PCR tests reported to DCHHS by hospital laboratories: March 22 – November 28, 2020 (CDC Weeks 26-48)¹⁻²



1. Data received as of 8:00 pm yesterday. All data are preliminary and subject to change as cases continue to be received and investigated.
2. Data are incomplete for the most recent dates. Test results may be reported to DCHHS several days after the result.

Table 7. Summary of weekly COVID-19 hospitalizations and deaths from Dallas County hospitals, Vital Statistics and Medical Examiner’s office ¹⁻⁴

Week Ending	09/26	10/03	10/10	10/17	10/24	10/31	11/7	11/14	11/21	11/28	09/08/19–Present
CDC Week	39	40	41	42	43	44	45	46	47	48	Present
COVID-19 hospitalizations ¹	151	211	197	246	230	277	335	409	318	242	10,736*
COVID-19 ICU admissions ¹	35	49	48	57	52	67	62	85	59	44	2,491*
Probable COVID-19-associated deaths ²	1	0	0	0	3	3	7	2	4	6	39*
Confirmed COVID-19-associated deaths ³	13	14	15	17	22	27	23	26	20	18	1,245*

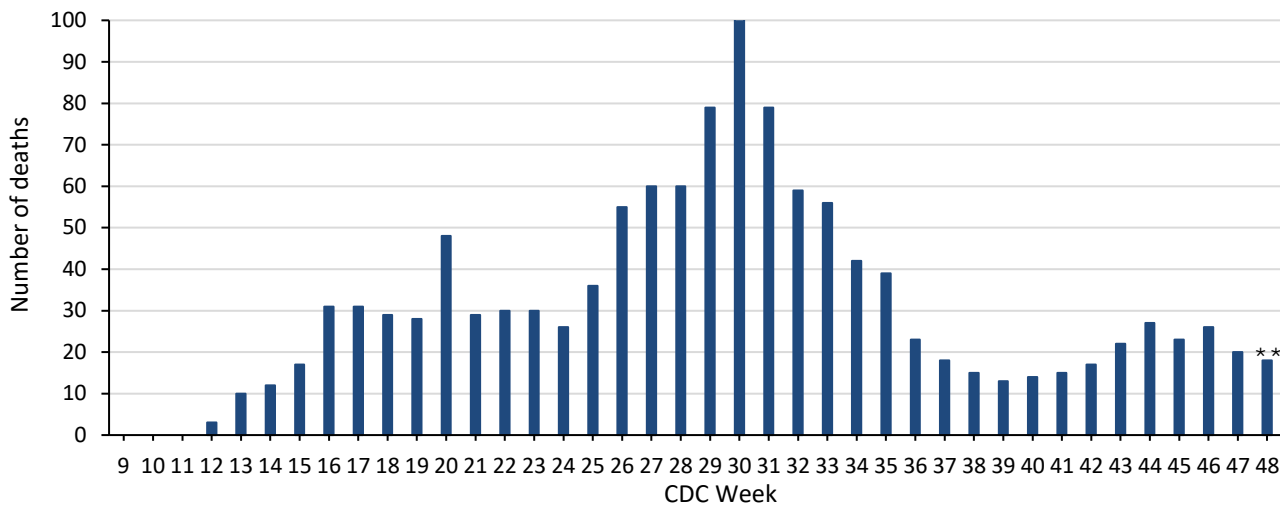
* All data are preliminary and subject to change as cases continue to be received and investigated.

¹ Reflects all COVID-19-associated hospitalizations and intensive care unit admissions reported from area hospitals within Dallas County by week of admission. Hospitalizations are inclusive of ICU admissions. Data are preliminary and include reports received as of 8:00 pm yesterday.

² Probable COVID-19 deaths as defined by CSTE interim case classification criteria--meeting vital records criteria without molecular lab test confirmation.

³ Confirmed COVID-19 deaths as defined by a positive molecular amplification detection test *and* any of the following: (1) death certificate denotation, (2) medical record documentation of compatible symptoms and clear progression from illness to death, or (3) determination by the County Medical Examiner’s office (ME) of no alternate cause of death. Does not include possible COVID-19-associated deaths with pending determination of cause of death.

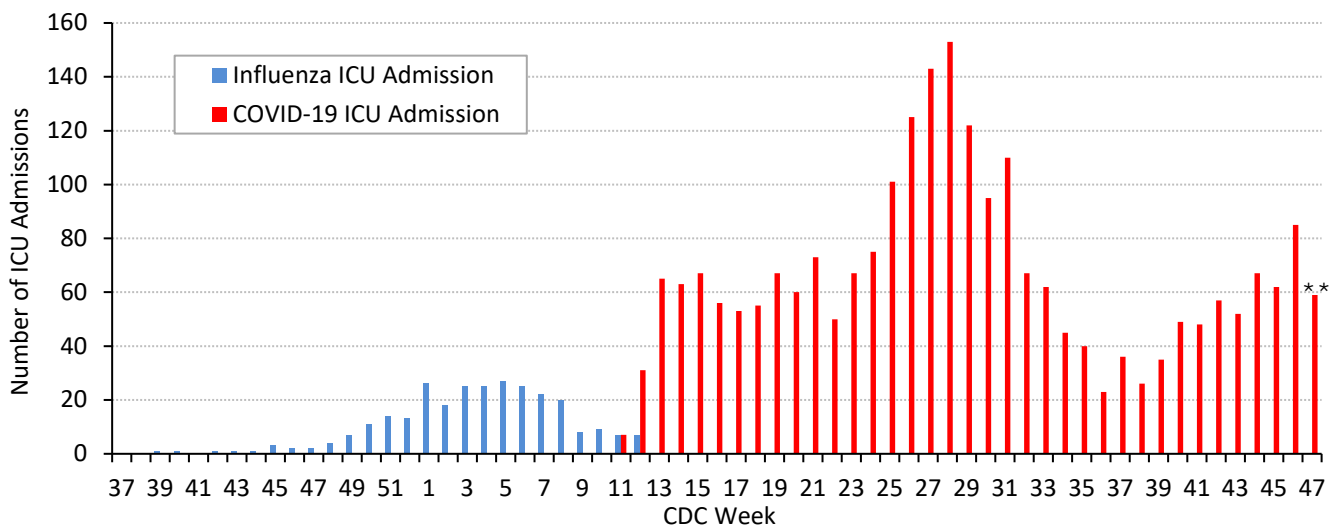
Figure 6. Confirmed COVID-19-associated deaths by week of death, Dallas County: March 2019 through week ending November 28, 2020 (CDC Week 48)



* Dallas County residents diagnosed with confirmed COVID-19 by molecular amplification detection testing.

** All data are preliminary and subject to change as cases continue to be received and investigated.

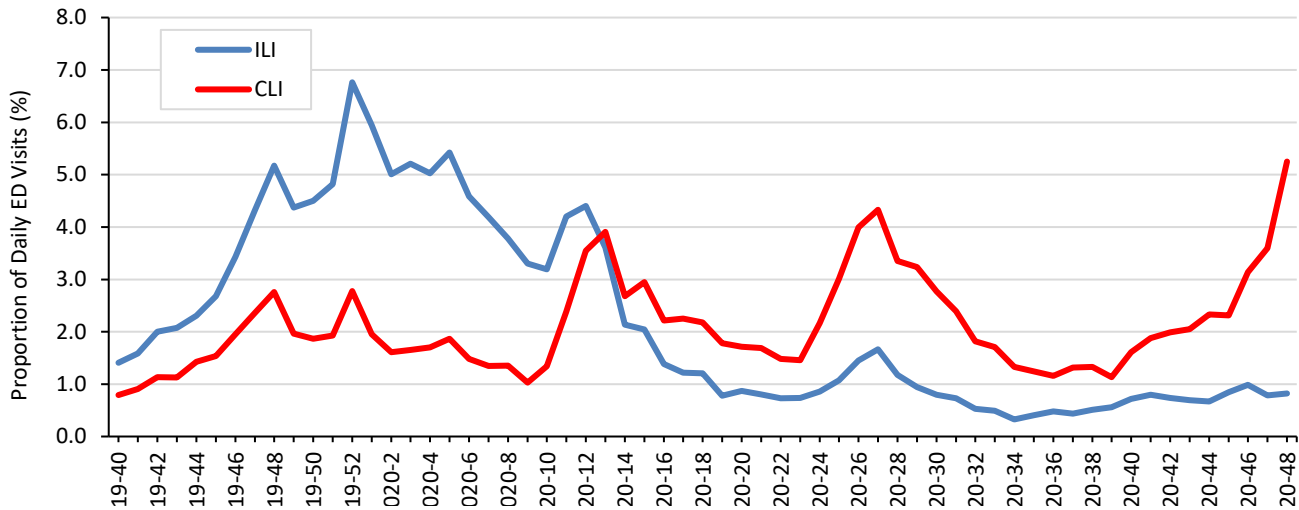
Figure 7. Intensive care unit hospitalizations for influenza and COVID-19 by week of admission, Dallas County: September 2019 through week ending November 28, 2020 (CDC Week 48)*



* New ICU admissions of Dallas County residents reported with confirmed COVID-19 by molecular amplification detection testing as of 8:00 pm yesterday. Hospitalized patients with self-reported residence from outside of Dallas County are not included.

** All data are preliminary and subject to change as cases continue to be received and investigated.

Figure 8. Syndromic surveillance of emergency department visits for COVID-like illness (CLI)* and Influenza-like illness (ILI), Dallas County: September 29, 2019 – November 28, 2020 (CDC Week 48)**



ESSENCE Data is from 18 hospital emergency departments voluntarily reporting numbers of persons presenting with self-reported chief complaints.

* CLI is defined as chief complaint of fever and cough or shortness of breath or difficulty breathing.

**ILI is defined as chief complaint of fever and cough or sore throat or mention of influenza.

Table 8. Summary of weekly COVID-19 confirmed and probable cases and deaths, Dallas County (CDC Weeks 25 - 48)

CDC Week	Week Ending	Total Confirmed and Probable Cases	Total School-Aged Cases (5 to 17 years)	Daily Average New Confirmed and Probable Cases*	Daily Average New Confirmed and Probable Deaths**	Percentage of Tests Positive for SARS-CoV-2***
25	6/20/2020	5,855	472	836	5	26.9%
26	6/27/2020	8,611	647	1,230	8	30.5%
27	7/4/2020	8,942	699	1,277	9	30.0%
28	7/11/2020	9,190	865	1,312	9	26.6%
29	7/18/2020	6,602	688	943	11	21.7%
30	7/25/2020	4,520	493	646	15	19.3%
31	8/1/2020	3,350	418	479	12	15.9%
32	8/8/2020	2,844	320	406	9	14.0%
33	8/15/2020	2,159	183	308	9	13.2%
34	8/22/2020	1,758	188	251	6	11.2%
35	8/29/2020	2,195	188	314	6	10.8%
36	9/5/2020	2,067	161	295	3	10.5%
37	9/12/2020	1,868	198	267	3	9.7%
38	9/19/2020	2,240	239	320	2	11.4%
39	9/26/2020	2,500	260	357	2	10.7%
40	10/3/2020	2,655	306	379	2	10.0%
41	10/10/2020	3,575	451	510	2	11.5%
42	10/17/2020	4,456	553	637	2	14.3%
43	10/24/2020	5,274	689	753	4	15.1%
44	10/31/2020	5,423	615	775	4	15.0%
45	11/7/2020	7,652	940	1,093	4	15.3%
46	11/14/2020	9,984	1,306	1,426	4	19.8%
47	11/21/2020	9,773	1,192	1,396	3	20.4%
48	11/28/2020	7,824	857	1,117	3	22.3%

* For 7-day time period for respective CDC week by date of test collection

** For 7-day time period for respective CDC week by date of death

*** See Table 6 for historical data

Table 9. Cumulative COVID-19 cases by city of residence within Dallas County as of December 8, 2020*(e.g. Does not include cases who reside in portions of cities which are not within Dallas County.)*

<i>City of Residence</i>	Confirmed Cases (N=137,143)	Probable Cases (N=13,797)	Total Confirmed + Probable Cases reported in 14 day period from 11/15 – 11/28*	Estimated COVID-19 Prevalence (%) in 14 day period from 11/15 – 11/28** (lower – upper estimate range)
Addison	628	82	91	1.68 - 5.60
Balch Springs	1,642	134	250	3.00 – 10.00
Carrollton	2,354	245	322	1.70 - 5.67
Cedar Hill	2,371	215	311	1.97 - 6.57
Cockrell Hill	317	35	37	2.67 - 8.91
Combine	8	1	1	0.34 - 1.13
Coppell	1,057	289	177	1.31 - 4.36
Dallas	68,003	7,108	8,557	2.04 - 6.79
DeSoto	2,646	134	341	1.93 - 6.44
Duncanville	2,310	221	268	2.07 - 6.92
Farmers Branch	1,603	207	217	1.35 - 4.51
Ferris	7	0	0	N/A
Garland	12,661	794	1,671	2.09 - 6.98
Glenn Heights	329	22	47	1.38 - 4.58
Grand Prairie	7,369	1,034	955	2.15 - 7.16
Highland Park	265	87	35	1.16 - 3.85
Hutchins	366	10	40	2.05 - 6.82
Irving	13,163	946	1,578	1.97 - 6.58
Lancaster	2,358	142	302	2.31 - 7.70
Lewisville	1	1	0	N/A
Mesquite	8,212	854	1,177	2.51 - 8.36
Ovilla	6	1	5	4.02 - 13.4
Richardson	2,787	327	384	1.33 - 4.44
Rowlett	2,279	142	384	1.95 - 6.50
Sachse	591	51	109	1.83 - 6.10
Seagoville	2,403	83	113	2.01 - 6.71
Sunnyvale	322	49	56	2.46 - 8.19
University Park	722	559	118	1.42 - 4.72
Wilmer	341	14	42	2.64 - 8.80
Wylie	22	10	9	4.36 - 14.54
Dallas County	137,143	13,797	17,597	2.00 - 6.68

*Sum of confirmed and probable cases by date of test collection, for 14 day timeframe from: November 15 – November 28, 2020. Most recent 2 weeks not included due to average reporting lag of 9.0 days. Case numbers are only for portions of each city which are within Dallas County.

**Estimated COVID-19 prevalence rate ranges calculated based on: Fox SJ, Lachmann M, Meyers LA. "COVID-19 Campus Introduction Risks for School Reopenings" presented to the TEA on July 22, 2020. Denominator populations are only for portions of each city which are within Dallas County.

https://sites.cns.utexas.edu/sites/default/files/cid/files/covid-19_school_introduction_risks.pdf?m=1595468503

Many Thanks to:

Our area hospitals and healthcare providers for reporting lab-confirmed COVID-19 cases

Our DCHHS Case and Contact Investigations Team volunteers from:

Dallas County Medical Society

UT Southwestern Medical School

Texas A&M College of Medicine

UTHealth School of Public Health

Retired School Nurses

New COVID-19 cases are reported as a daily aggregate, with this cumulative summary updated Tuesdays and Fridays.

DCHHS COVID-19 Summaries and Case Report Form are accessible at:

<https://www.dallascounty.org/departments/dchhs/2019-novel-coronavirus.php>

DCHHS Acute Communicable Disease Epidemiology Division: COVID-19@dallascounty.org