

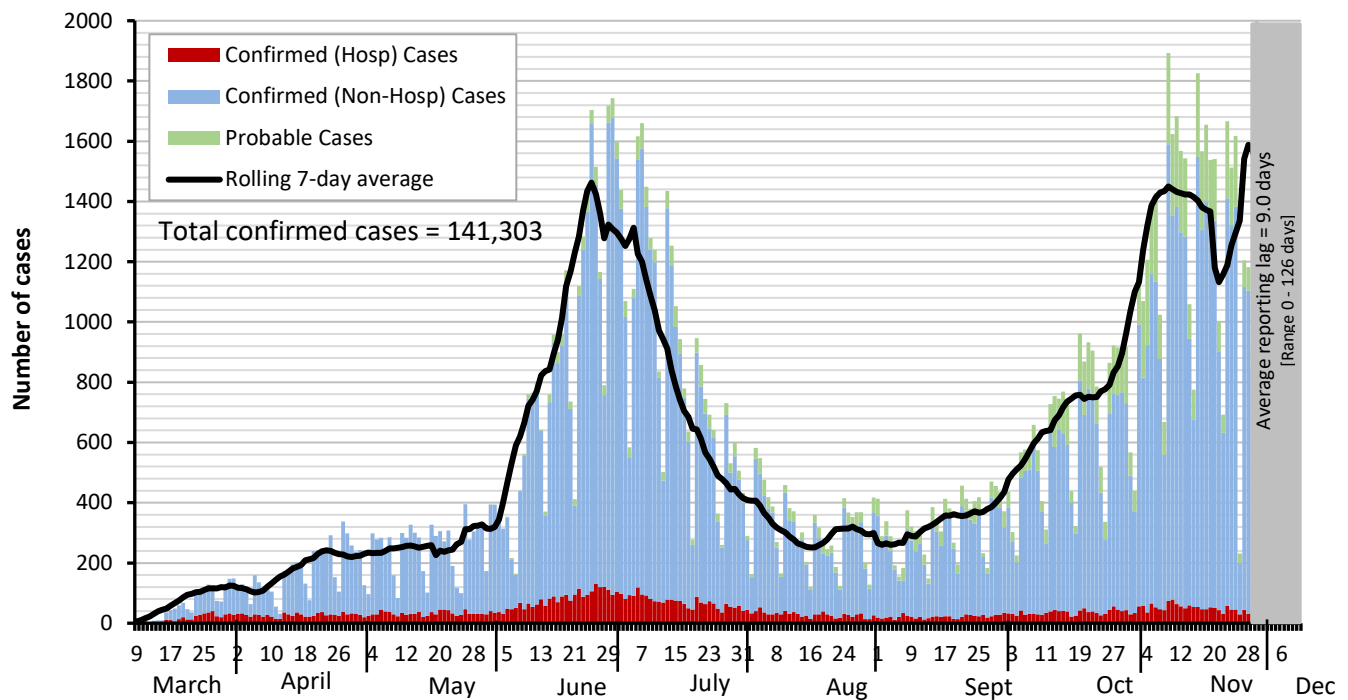


Dallas County Health and Human Services 2019 Novel Coronavirus (COVID-19) Summary

December 11, 2020

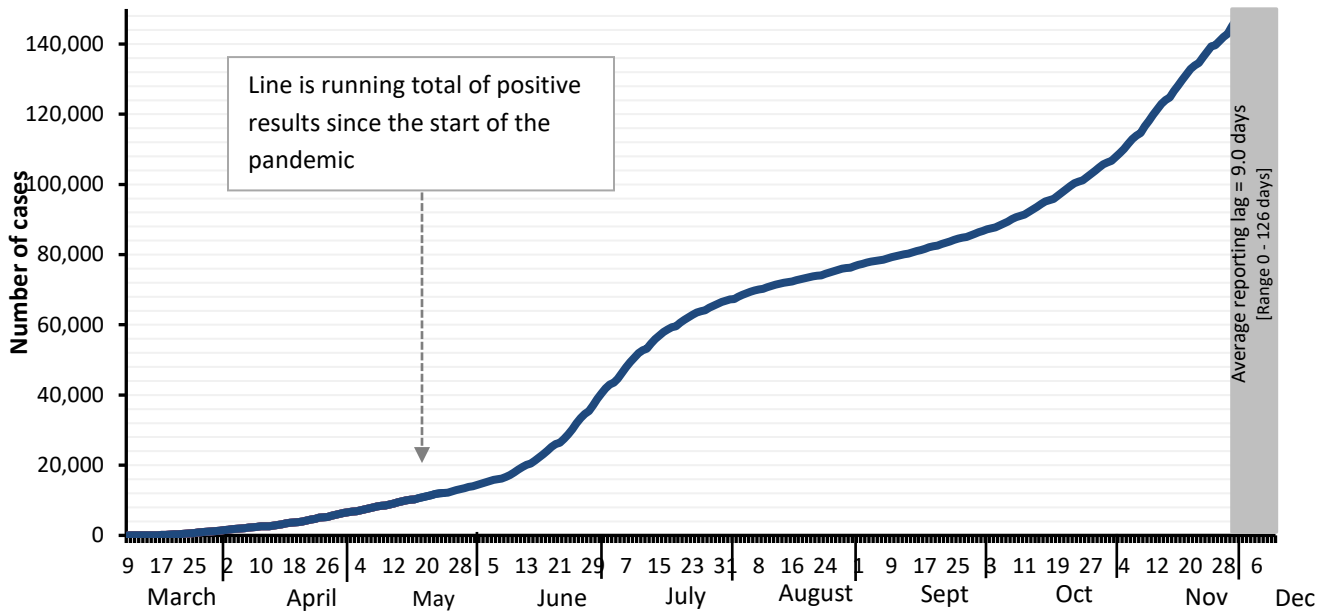
- As of December 11, 2020, DCHHS is reporting an additional 1,353 confirmed and 496 probable cases of 2019 novel coronavirus (COVID-19). The cumulative total number of confirmed cases in Dallas County is 141,303 including 1,315 confirmed deaths. The total probable case count is 14,922 including 52 probable deaths.
- The provisional seven-day average of daily new confirmed and probable cases (by date of test collection) for CDC week 49 (week ending 11/28/2020) was 1,570, which is a rate of 56.6 daily new cases per 100,000 residents.
- The percentage of respiratory specimens testing positive for SARS-CoV-2 remains high, with 21.6% of symptomatic patients presenting to area hospitals testing positive in week 49 (week ending 12/5/2020).
- During the past 30 days, there have been 4,524 COVID-19 cases in school-aged children and staff reported from over 735 separate K-12 schools in Dallas County, including 685 staff members. Of these cases, 534 have been associated with extracurricular activities, including athletics.
- There are currently 97 active long-term care facility outbreaks. Over the past 30 days, a total of 928 COVID-19 cases have been reported from these facilities, including 364 staff members. Of these cases 35 have been hospitalized, and 41 have died, including 2 deaths of staff members.
- Twenty-six outbreaks of COVID-19 in congregate-living facilities (e.g. homeless shelters, group homes, and halfway homes) have been reported in the past 30 days associated with 166 cases, including 8 hospitalizations. One facility has reported 89 COVID-19 outbreak cases since October.
- Of the total confirmed deaths reported to date, about 22% have been associated with long-term care facilities.

Figure 1. Confirmed COVID-19 positive cases by date of test collection, Dallas County: March 10 – December 11, 2020¹⁻⁴



1. Data received as of 8:00 pm yesterday, for residents of Dallas County tested with known specimen collection dates. This does include delayed results from previous days. All data are preliminary and subject to change as cases continue to be investigated.
2. Data are incomplete for the most recent dates. Test results may be reported to DCHHS several days after the result. The reporting lag is calculated as time from specimen collection to receipt of test results. The average reporting lag is 9.0 days, with a range from 0 – 126 days.
3. This summary graph includes only confirmed cases based on molecular amplification detection test results.
4. Bars are the number of positive molecular amplification detection tests which were collected that day.
5. Rolling 7-day average is the average number of new confirmed COVID-19 cases collected 7 days prior to value.

Figure 2. Cumulative confirmed COVID-19 cases by date of test collection, Dallas County: March 10 – December 11, 2020¹⁻²



1. Data received as of 8:00 pm yesterday, for residents of Dallas County tested with known specimen collection dates. This does include delayed results from previous days. All data are preliminary and subject to change as cases continue to be investigated.
2. Data are incomplete for the most recent dates. Test results may be reported to DCHHS several days after the result. The reporting lag is calculated as time from specimen collection to receipt of test results. The average reporting lag is 9.0 days, with a range from 0 – 126 days.

Table 1. Characteristics of cumulative confirmed COVID-19 cases, Dallas County: March 9 – December 11, 2020

		Confirmed (N)	Probable (N)	% of Total Cases ⁺
Total Cases in Dallas County residents		N = 141,303	N=14,922	100%
Age Group (years)	0 to 17	16,529	3,618	13%
	18 to 40	63,820	6,422	45%
	41 to 64	46,896	3,699	33%
	≥65	13,031	940	9%
Sex	Female	72,646	7,179	52%
	Male	67,104	6,835	48%
Not Hospitalized (Includes: Outpatient, urgent care, drive-through, ED)		130,220	N/A	92%
Ever Hospitalized		11,083	N/A	8%

⁺ Percentages calculated among cases with known age/sex

Table 2. Number of confirmed COVID-19 cases by age group and month of collection, Dallas County

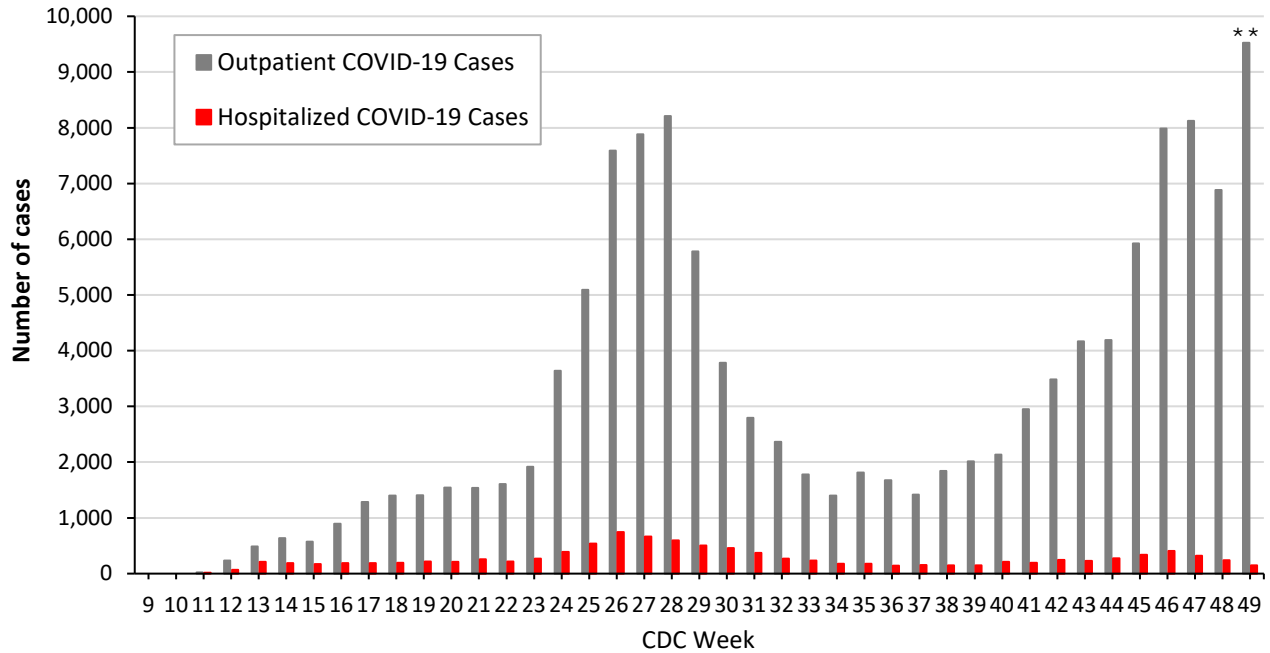
Age Group (in years)	0 to 17		18 to 22		23 to 39		40 to 64		≥65	
Month of Diagnosis	N	%	N	%	N	%	N	%	N	%
March	27	2%	56	4%	436	32%	625	46%	214	16%
April	307	6%	314	6%	1,587	31%	2,229	44%	609	12%
May	779	10%	627	8%	2,462	33%	2,935	39%	755	10%
June	2,393	10%	2,389	10%	9,908	41%	7,842	32%	1,625	7%
July	3,207	12%	2,459	9%	9,035	34%	9,697	36%	2,287	9%
August	1,045	12%	1,004	11%	2,822	32%	3,149	35%	921	10%
September	948	11%	1,060	13%	2,886	34%	2,831	34%	683	8%
October	2,150	13%	1,454	9%	5,606	33%	5,845	35%	1,719	10%
November	4,389	13%	2,798	8%	11,086	34%	11,273	34%	3,391	10%
December (As of 12/11/20)	1,284	15%	713	9%	2,688	32%	2,798	34%	827	10%

Table 3. Confirmed and Probable School-Aged Cases (5 to 17 years) by CDC week of test collection

City of Residence	Week 44 (ending 10/31)	Week 45 (ending 11/7)	Week 46 (ending 11/14)	Week 47 (ending 11/21)	Week 48 (ending 11/28)	Week 49 (ending 12/5)
Addison	0	0	3	2	3	1
Balch Springs	21	7	20	23	18	49
Carrollton	8	14	26	23	13	21
Cedar Hill	14	21	30	21	22	32
Cockrell Hill	1	2	3	0	6	4
Combine	0	0	0	0	0	0
Coppell	10	51	29	8	12	13
Dallas	283	400	597	572	393	742
DeSoto	12	15	21	20	20	33
Duncanville	11	17	26	26	14	31
Farmers Branch	4	7	13	10	10	10
Ferris	0	0	0	0	0	0
Garland	46	104	138	133	80	152
Glenn Heights	2	3	3	3	4	0
Grand Prairie	37	84	79	86	50	91
Highland Park	0	2	3	5	3	3
Hutchins	1	1	0	3	2	3
Irving	40	73	106	80	74	116
Lancaster	7	12	20	28	15	53
Lewisville	0	0	0	0	0	0
Mesquite	53	67	105	82	67	110
Ovilla	0	0	0	1	0	0
Richardson	26	19	24	22	22	32
Rowlett	18	17	22	26	18	30
Sachse	2	2	7	6	3	4
Seagoville	11	6	9	9	5	14
Sunnyvale	1	13	8	3	6	1
University Park	4	5	10	9	6	10
Wilmer	3	0	4	7	1	5
Wylie	0	1	0	1	1	0
Unknown	0	0	0	0	0	0
Total	615	943	1,306	1,209	868	1,560

Includes only children ages 5 to 17 years of age residing in Dallas County, with positive molecular or antigen test results received as of 8:00 pm yesterday. Does not include verbal reports of test results that are not accompanied by documentation of test results from a laboratory or testing facility. All data are preliminary and subject to change as cases continue to be investigated.

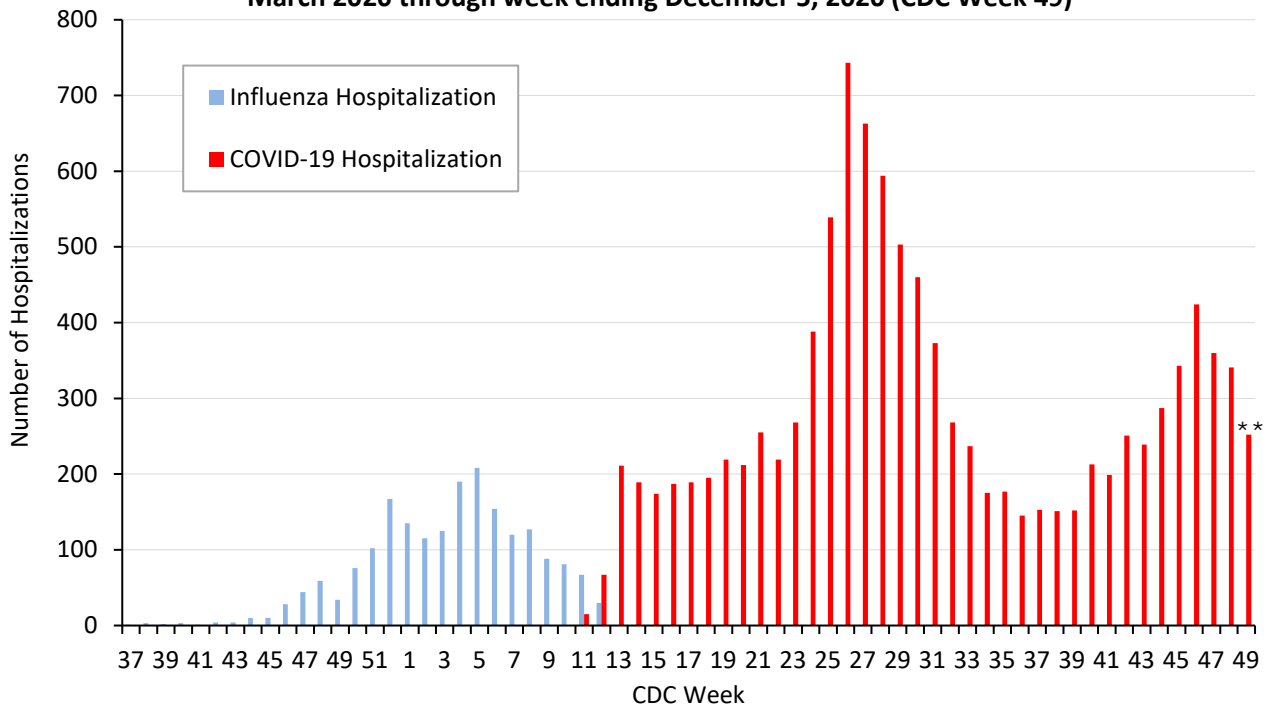
Figure 3. Non-hospitalized and hospitalized confirmed COVID-19 cases by week of test collection, Dallas County: March 2020 through week ending December 5, 2020 (CDC Week 49)*



* Non-hospitalized includes all patients not admitted to acute-care hospitals (e.g. outpatient, urgent care, drive-through, ED-only, LTCF) and diagnosed with confirmed COVID-19. All data are preliminary and subject to change as cases continue to be received and investigated.

** Data are incomplete for the most recent dates. Test results may be reported to DCHHS several days after the result. The reporting lag is calculated as time from specimen collection to receipt of molecular amplification detection test results.

Figure 4. Influenza and confirmed COVID-19 hospitalizations by week of admission, Dallas County: March 2020 through week ending December 5, 2020 (CDC Week 49)*



* Hospitalized Dallas County residents diagnosed with confirmed COVID-19 by molecular amplification detection testing. All data are preliminary and subject to change as cases continue to be received and investigated.

** Data are incomplete for the most recent dates. Test results may be reported to DCHHS several days after the result. The reporting lag is calculated as time from specimen collection to receipt of test results.

**Table 4. Characteristics of cumulative hospitalized confirmed COVID-19 cases,
Dallas County: March 10 – December 11, 2020**

		Hospitalized Cases	%
<i>Ever Hospitalized</i>		N = 11,083	8% of Total Cases
Admitted to Intensive Care Unit		2,570	23%
Mechanical Ventilation		1,325	12%
Sex	Male	5,774	52%
	Female	5,305	48%
Age Group (years)	0-17	301	3%
	18-40	2,386	22%
	41-64	4,754	43%
	≥65	3,641	33%
Presence of ≥1 high risk condition		6,037	54%
Diabetes		3,369	30%
Lung Disease (e.g. COPD, asthma)		1,202	11%
Heart Disease (e.g. CHF)		1,432	13%
Kidney Disease (e.g. ESRD, dialysis)		1,098	10%
Cancer, Immune-compromise		764	7%
Obesity		1,934	17%
Race/ Ethnicity	White	2,172	20%*
	Hispanic	4,919	44%*
	Black	2,571	23%*
	Other	427	4%*
	Non-reported/ Unknown	994	9%

* Percentages can also be calculated to exclude cases for which race/ethnicity was not reported

**Table 5. Characteristics of cumulative confirmed COVID-19 deaths,
Dallas County: March 10 – December 11, 2020**

<i>Death classified as confirmed if decedent was a Dallas County resident with a positive molecular test. Data are obtained from ME office, hospitals, and vital statistics.</i>		Confirmed Deaths	%
		N = 1,315	0.9% of Total Cases
Sex	Male	827	63%
	Female	488	37%
Age Group (years)	0-17	2	<1%
	18-40	59	4%
	41-64	429	33%
	≥65	825	63%
Resident of a Long-Term Care Facility		294	22%
Presence of ≥1 high risk condition		1,006	77%
Diabetes		621	47%
Race/ Ethnicity	White	331	25% (29% of population) ¹
	Hispanic	604	46% (41% of population) ¹
	Black	320	25% (24% of population) ¹
	Asian	37	3% (7% of population) ¹

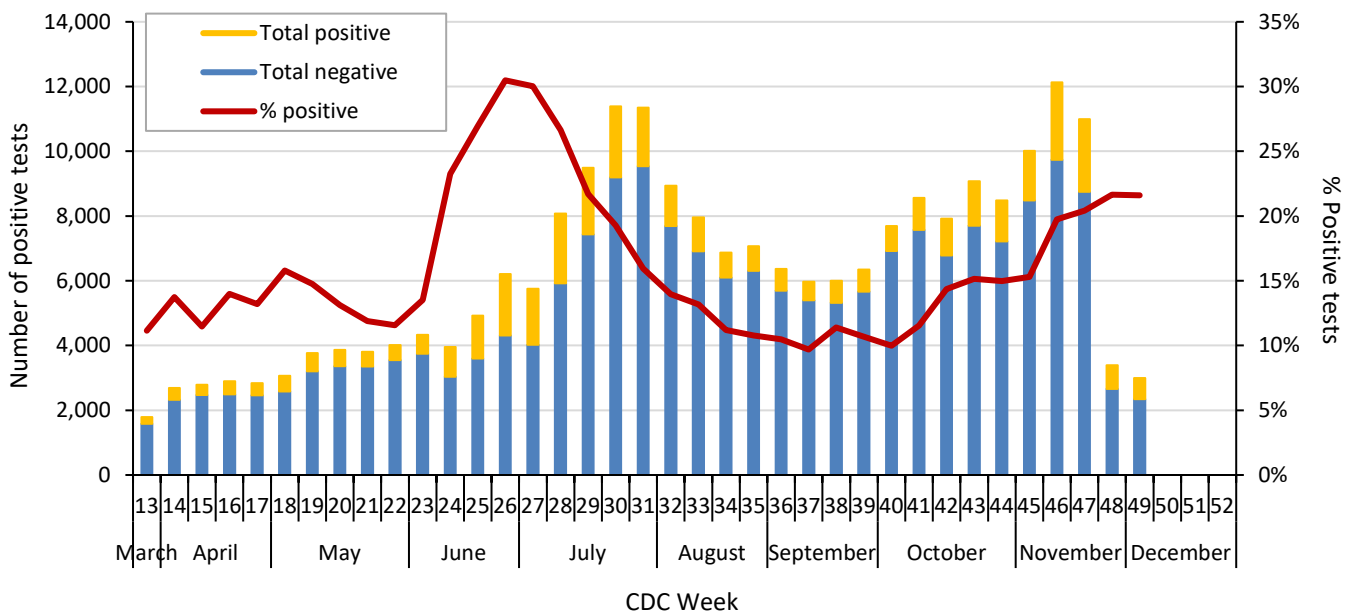
¹ 2019 U.S. Census population estimates for Dallas County

Table 6. Respiratory virus testing by North Texas hospitals participating in public health surveillance programs: September 27, 2020 – December 5, 2020 (CDC Weeks 40-49)¹⁻²

Week Ending		10/3	10/10	10/17	10/24	10/31	11/7	11/14	11/21	11/28	12/5
SARS-CoV-2	Positive	768	989	1136	1374	1271	1533	2397	2244	735	647
	Total Tests	7,688	8,565	7,918	9,072	8,487	10,018	12,134	10,989	3,393	2,994
Novel Coronavirus	% Positive	10.0%	11.5%	14.3%	15.1%	15.0%	15.3%	19.8%	20.4%	21.7%	21.6%
Influenza	Positive	0	0	0	2	0	0	0	0	0	0
	Total Tests	231	91	105	308	302	137	178	207	144	152
	% Positive	0%	0%	0%	0.6%	0%	0%	0%	0%	0%	0%
Seasonal (non-SARS-2) Coronavirus	Positive	0	0	0	0	0	0	0	0	0	0
	Total Tests	60	69	83	84	49	104	143	135	111	107
	% Positive	0%	0%	0%	0%	0%	0%	0%	0%	0%	0%
Adenovirus (respiratory)	Positive	2	1	4	2	2	1	4	7	6	4
	Total Tests	162	69	83	193	164	104	143	135	111	107
	% Positive	1.2%	1.4%	4.8%	1.0%	1.2%	1.0%	2.8%	5.2%	5.4%	3.7%
Metapneumovirus	Positive	0	0	0	0	0	0	1	0	0	0
	Total Tests	162	69	83	193	164	104	143	135	111	107
	% Positive	0%	0%	0%	0%	0%	0%	0.7%	0%	0%	0%
Rhinovirus/Enterovirus	Positive	23	21	36	48	37	42	52	58	45	31
	Total Tests	162	69	83	193	164	137	143	135	111	107
	% Positive	14.2%	30.4%	43.4%	24.9%	22.6%	30.7%	36.4%	43.0%	40.5%	29.0%
RSV	Positive	0	0	0	0	0	0	0	0	0	0
	Total Tests	185	91	105	220	199	137	178	187	144	152
	% Positive	0%	0%	0%	0%	0%	0%	0%	0%	0%	0%

Data sources: National Respiratory and Enteric Virus Surveillance System and an additional subset of hospitals voluntarily reporting surveillance PCR data directly to DCHHS. Testing denominators include out-of-county patients and testing performed only through hospitals in Dallas County. (Does not include FEMA drive-thru clinics). Data are incomplete for the most recent dates.

Figure 5. SARS-CoV-2 positive PCR tests reported to DCHHS by hospital laboratories: March 22 – December 5, 2020 (CDC Weeks 26-49)¹⁻²



1. Data received as of 8:00 pm yesterday. All data are preliminary and subject to change as cases continue to be received and investigated.
 2. Data are incomplete for the most recent dates. Test results may be reported to DCHHS several days after the result.

Table 7. Summary of weekly COVID-19 hospitalizations and deaths from Dallas County hospitals, Vital Statistics and Medical Examiner’s office ¹⁻⁴

Week Ending	10/03	10/10	10/17	10/24	10/31	11/7	11/14	11/21	11/28	12/5	09/08/19–Present
CDC Week	40	41	42	43	44	45	46	47	48	49	Present
COVID-19 hospitalizations ¹	213	199	251	239	287	343	424	360	341	252	11,083*
COVID-19 ICU admissions ¹	49	48	59	56	71	67	90	73	66	34	2,570*
Probable COVID-19-associated deaths ²	0	0	0	3	3	8	5	5	6	4	52*
Confirmed COVID-19-associated deaths ³	14	15	17	24	31	27	46	32	31	17	1,315*

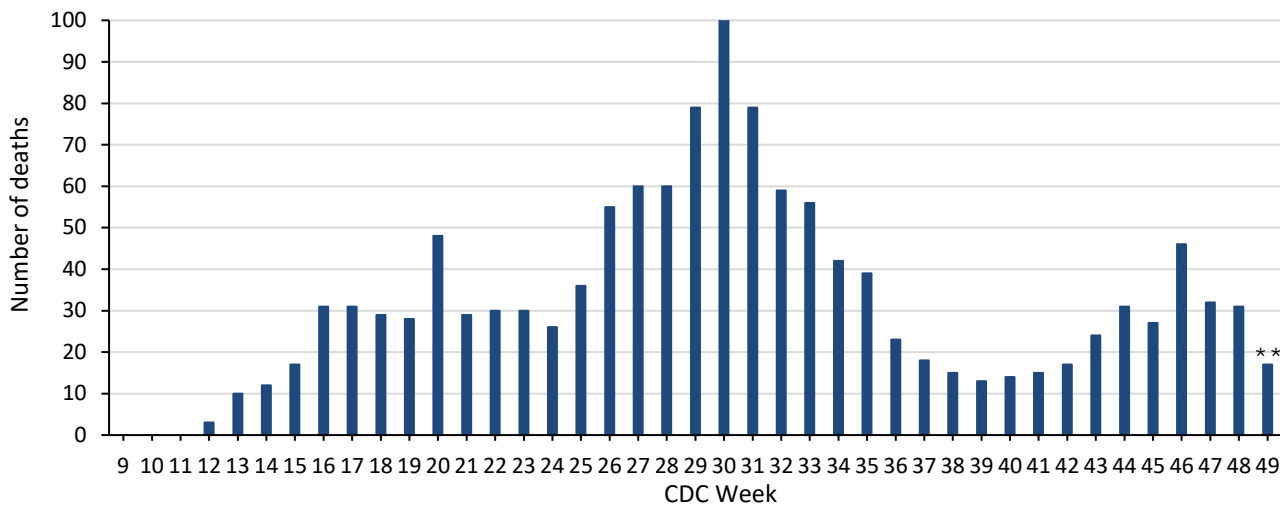
* All data are preliminary and subject to change as cases continue to be received and investigated.

¹ Reflects all COVID-19-associated hospitalizations and intensive care unit admissions reported from area hospitals within Dallas County by week of admission. Hospitalizations are inclusive of ICU admissions. Data are preliminary and include reports received as of 8:00 pm yesterday.

² Probable COVID-19 deaths as defined by CSTE interim case classification criteria—meeting vital records criteria without molecular lab test confirmation.

³ Confirmed COVID-19 deaths as defined by a positive molecular amplification detection test *and* any of the following: (1) death certificate denotation, (2) medical record documentation of compatible symptoms and clear progression from illness to death, or (3) determination by the County Medical Examiner’s office (ME) of no alternate cause of death. Does not include possible COVID-19-associated deaths with pending determination of cause of death.

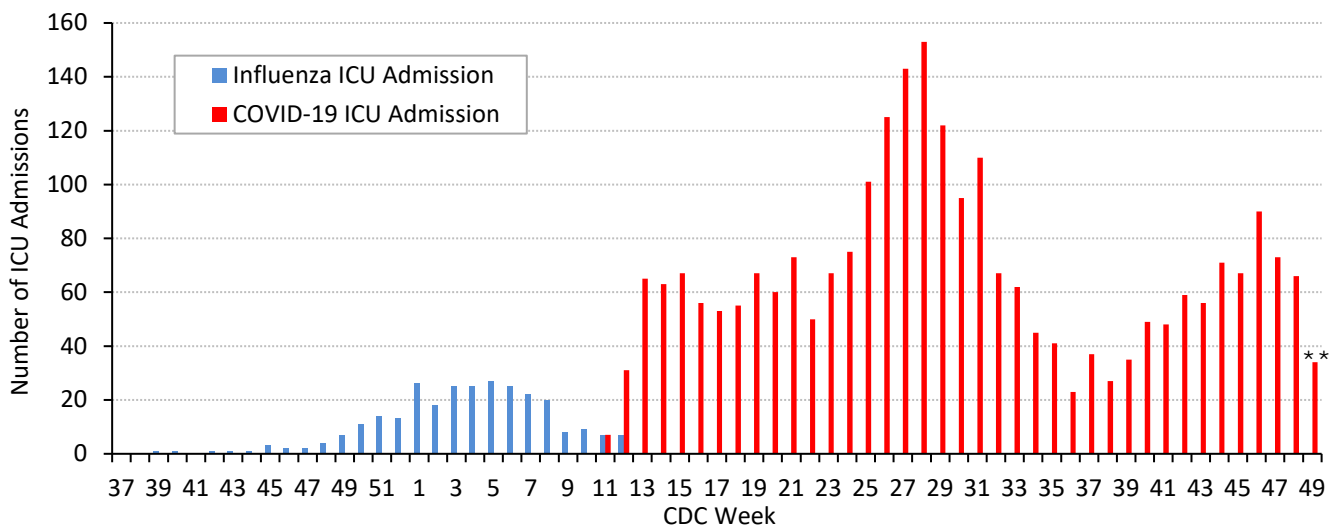
Figure 6. Confirmed COVID-19-associated deaths by week of death, Dallas County: March 2019 through week ending December 5, 2020 (CDC Week 49)



* Dallas County residents diagnosed with confirmed COVID-19 by molecular amplification detection testing.

** All data are preliminary and subject to change as cases continue to be received and investigated.

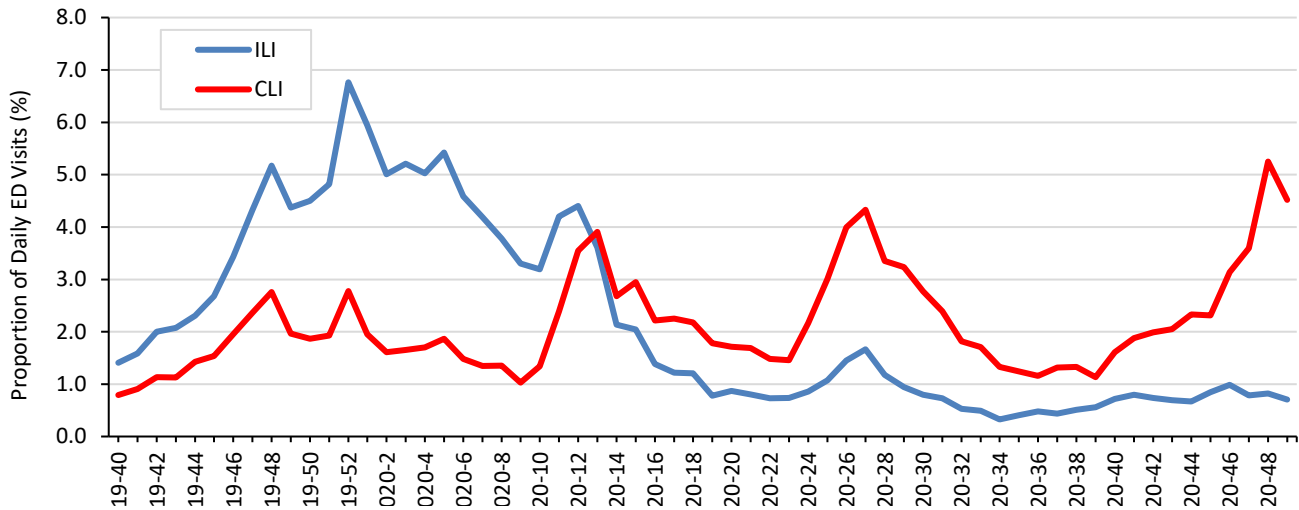
Figure 7. Intensive care unit hospitalizations for influenza and COVID-19 by week of admission, Dallas County: September 2019 through week ending December 5, 2020 (CDC Week 49)*



* New ICU admissions of Dallas County residents reported with confirmed COVID-19 by molecular amplification detection testing as of 8:00 pm yesterday. Hospitalized patients with self-reported residence from outside of Dallas County are not included.

** All data are preliminary and subject to change as cases continue to be received and investigated.

Figure 8. Syndromic surveillance of emergency department visits for COVID-like illness (CLI)* and Influenza-like illness (ILI), Dallas County: September 29, 2019 – December 5, 2020 (CDC Week 49)**



ESSENCE Data is from 18 hospital emergency departments voluntarily reporting numbers of persons presenting with self-reported chief complaints.

* CLI is defined as chief complaint of fever and cough or shortness of breath or difficulty breathing.

**ILI is defined as chief complaint of fever and cough or sore throat or mention of influenza.

Table 8. Summary of weekly COVID-19 confirmed and probable cases and deaths, Dallas County (CDC Weeks 25 - 49)

CDC Week	Week Ending	Total Confirmed and Probable Cases	Total School-Aged Cases (5 to 17 years)	Daily Average New Confirmed and Probable Cases*	Daily Average New Confirmed and Probable Deaths**	Percentage of Tests Positive for SARS-CoV-2***
25	6/20/2020	5,855	472	836	5	26.9%
26	6/27/2020	8,611	647	1,230	8	30.5%
27	7/4/2020	8,942	699	1,277	9	30.0%
28	7/11/2020	9,190	865	1,313	9	26.6%
29	7/18/2020	6,601	688	943	11	21.7%
30	7/25/2020	4,521	493	646	15	19.3%
31	8/1/2020	3,350	418	479	12	15.9%
32	8/8/2020	2,844	320	406	9	14.0%
33	8/15/2020	2,159	183	308	9	13.2%
34	8/22/2020	1,758	188	251	6	11.2%
35	8/29/2020	2,195	188	314	6	10.8%
36	9/5/2020	2,067	161	295	3	10.5%
37	9/12/2020	1,869	198	267	3	9.7%
38	9/19/2020	2,240	239	320	2	11.4%
39	9/26/2020	2,501	261	357	2	10.7%
40	10/3/2020	2,656	306	379	2	10.0%
41	10/10/2020	3,577	451	511	2	11.5%
42	10/17/2020	4,470	553	639	2	14.3%
43	10/24/2020	5,296	691	757	4	15.1%
44	10/31/2020	5,434	615	776	5	15.0%
45	11/7/2020	7,699	943	1,100	5	15.3%
46	11/14/2020	10,039	1,306	1,434	7	19.8%
47	11/21/2020	9,904	1,209	1,415	5	20.4%
48	11/28/2020	8,106	868	1,158	5	21.7%
49	12/5/2020	10,992	1,560	1,570	3	21.6%

* For 7-day time period for respective CDC week by date of test collection

** For 7-day time period for respective CDC week by date of death

*** See Table 6 for historical data

Table 9. Cumulative COVID-19 cases by city of residence within Dallas County as of December 11, 2020*(e.g. Does not include cases who reside in portions of cities which are not within Dallas County.)*

<i>City of Residence</i>	Confirmed Cases (N=141,303)	Probable Cases (N=14,922)	Total Confirmed + Probable Cases reported in 14 day period from 11/15 – 11/28*	Estimated COVID-19 Prevalence (%) in 14 day period from 11/15 – 11/28** (lower – upper estimate range)
Addison	648	91	95	1.75 - 5.84
Balch Springs	1,699	138	254	3.05 - 10.16
Carrollton	2,433	274	336	1.77 - 5.91
Cedar Hill	2,449	236	329	2.08 - 6.95
Cockrell Hill	3334	35	37	2.67 - 8.91
Combine	10	1	1	0.34 - 1.13
Coppell	1,097	299	186	1.37 - 4.58
Dallas	69,958	7,682	8,756	2.08 - 6.95
DeSoto	2,736	152	352	1.99 - 6.64
Duncanville	2,397	239	285	2.21 - 7.35
Farmers Branch	1,659	231	220	1.37 - 4.57
Ferris	7	0	0	N/A
Garland	13,020	933	1,699	2.13 - 7.09
Glenn Heights	332	22	47	1.38 - 4.58
Grand Prairie	7,609	1,107	971	2.18 - 7.28
Highland Park	275	90	35	1.16 - 3.85
Hutchins	378	10	40	2.05 - 6.82
Irving	13,540	1,028	1,600	2.00 - 6.67
Lancaster	2,445	150	306	2.34 - 7.80
Lewisville	1	1	0	N/A
Mesquite	8,517	911	1,216	2.59 - 8.64
Ovilla	5	1	4	3.22 - 10.72
Richardson	2,890	350	393	1.36 - 4.55
Rowlett	2,360	158	391	1.99 - 6.62
Sachse	610	55	110	1.85 - 6.15
Seagoville	2,440	87	113	2.01 - 6.71
Sunnyvale	335	51	59	2.59 - 8.62
University Park	750	563	123	1.48 - 4.92
Wilmer	347	16	42	2.64 - 8.80
Wylie	22	10	10	4.85 - 16.16
Dallas County	141,303	14,922	18,010	2.05 - 6.83

*Sum of confirmed and probable cases by date of test collection, for 14 day timeframe from: November 15 – November 28, 2020. Most recent 2 weeks not included due to average reporting lag of 9.0 days. Case numbers are only for portions of each city which are within Dallas County.

**Estimated COVID-19 prevalence rate ranges calculated based on: Fox SJ, Lachmann M, Meyers LA. "COVID-19 Campus Introduction Risks for School Reopenings" presented to the TEA on July 22, 2020. Denominator populations are only for portions of each city which are within Dallas County.

https://sites.cns.utexas.edu/sites/default/files/cid/files/covid-19_school_introduction_risks.pdf?m=1595468503

Many Thanks to:

Our area hospitals and healthcare providers for reporting lab-confirmed COVID-19 cases

Our DCHHS Case and Contact Investigations Team volunteers from:

Dallas County Medical Society

UT Southwestern Medical School

Texas A&M College of Medicine

UTHealth School of Public Health

Retired School Nurses

New COVID-19 cases are reported as a daily aggregate, with this cumulative summary updated Tuesdays and Fridays.

DCHHS COVID-19 Summaries and Case Report Form are accessible at:

<https://www.dallascounty.org/departments/dchhs/2019-novel-coronavirus.php>

DCHHS Acute Communicable Disease Epidemiology Division: COVID-19@dallascounty.org