

# Dallas County Health and Human Services Arbovirus Surveillance Report



Week 29 ending July 23, 2022

- In week 29, one mosquito traps tested positive for WNV. To date for 2022, a total of nine mosquito traps have tested positive for WNV.
- One human WNV case has been reported to date for 2022.
- Three travel related Dengue cases have been reported.
- No Zika cases have been reported year to date in 2022 in Dallas County.
- *Aedes albopictus* and *Aedes aegypti* are currently circulating in the area.

**Table 1.** Mosquito Laboratory and Human Case Surveillance Data for WNV, Dallas County

Week Ending	6/11	6/18	6/25	7/2	7/9	7/16	7/23*	YTD
MMWR Week	23	24	25	26	27	28	29	
Total Traps Placed in Dallas County <sup>a</sup>	246	234	206	228	229	250	236	3,297
Number of Positive Mosquito Traps (PHL; IL) <sup>c</sup>	0;0	0;0	1;0	1;1	2;1	0;1	1;0	5;4
Number of Pools Tested (PHL; IL) <sup>b,c</sup>	204;10	205;8	184;13	194;10	192;9	203;12	183;8	2,399;139
Number of Trap Results Currently Pending	0	0	0	0	0	0	35	
Average Number of <i>Cx. quinquefasciatus</i> per Trap <sup>d</sup>	31.0	39.4	46.8	27.0	23.8	23.2	11.8	23.0
Total Number of <i>Cx. quinquefasciatus</i> Trapped and Tested	5,328	5,869	6,127	4,481	4,408	4,595	2,544	53,058
Number of Positive Mosquito Pools (PHL; IL) <sup>c</sup>	0;0	0;0	1;0	1;1	2;1	0;1	1;0	5;4
WNV Infection Rate per 1,000 <i>Cx. quinquefasciatus</i> <sup>e</sup>	0.00	0.00	0.16	0.44	0.23	0.29	0.49	
Weekly Vector Index (VI) <sup>f</sup>	0.00	0.00	0.01	0.01	0.01	0.01	0.01	
Presumptive WNV Viremic Blood Donors	0	0	0	0	0	0	0	0
WNV Human Cases (WNND; WNF) <sup>g</sup>	0;0	0;0	0;0	0;0	0;0	0;0	0;0	1;0

**Table 2.** Mosquito Laboratory and Human Case Surveillance Data for chikungunya, dengue and Zika virus, Dallas County

Week Ending	6/11	6/18	6/25	7/2	7/9	7/16	7/23*	YTD
MMWR Week	23	24	25	26	27	28	29	
Total Biogents Sentinel-Traps Placed in Dallas County <sup>h</sup>	4	4	4	4	4	4	4	52
Average Number of <i>Aedes</i> per Trap <sup>i</sup>	0.5	0.8	0.3	0.0	1.0	0.3	0.0	0.43
Chikungunya Human Cases (Confirmed & Probable) <sup>j</sup>	0	0	0	0	0	0	0	0
Dengue Human Cases (Confirmed & Probable) <sup>k</sup>	0	0	0	0	0	0	0	3
Zika Human Cases (Confirmed & Probable) <sup>l</sup>	0	0	0	0	0	0	0	0
Pregnant Women with Possible Zika Infection <sup>m</sup>	0	0	0	0	0	0	0	0

\*Data for most recent 2 weeks are preliminary, and reflect results reported as of 12:30 p.m. July 25, 2022

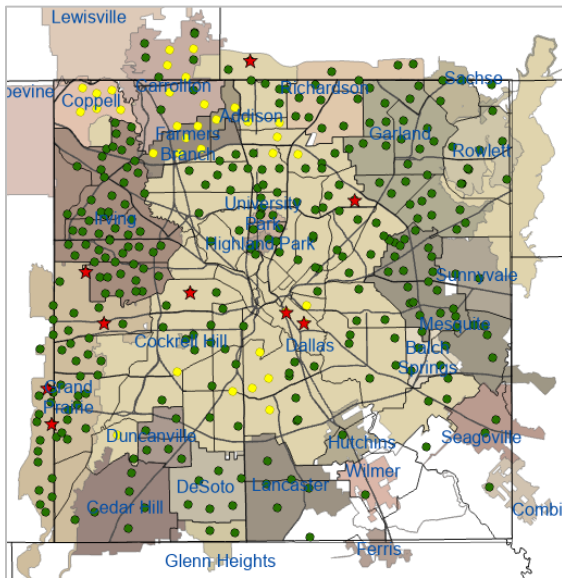
- All traps deployed in municipalities submitting data to DCHHS since January 1, 2022. Includes traps without mosquitoes, malfunctioning traps and traps with pending results
- Excludes traps without female *Culex quinquefasciatus* identified. Maximum of 50 female *Culex quinquefasciatus* per pool; more than 1 pool may be tested per trap
- PHL = Public health laboratory (DSHS, DCHHS) testing performed by viral culture or CDC RT-PCR protocol; IL = Testing from independent labs by alternate methods
- Average abundance of female *Culex quinquefasciatus* mosquitoes per trap night/week (excludes non-working traps)
- WNV Infection rates calculated using a Maximum Likelihood Estimation (MLE). *Biggerstaff BJ. PooledInfrate, version 4.0; Microsoft Excel Add-In; CDC 2007*
- The Vector Index (VI) reflects the MLE adjusted for *Culex quinquefasciatus* abundance.  $VI = \sum_{i=species} \bar{N} i \bar{P} i$ , where  $\bar{N}$  is the average number of *Culex quinquefasciatus* mosquitoes collected per trap night and  $\bar{P}$  is the estimated infection rate
- Human cases by week of report to health department. WNND = West Nile Neuroinvasive Disease; WNF = West Nile Fever
- All Biogents (BG) Sentinel traps deployed in municipalities submitting data to DCHHS since Week 15.
- Average abundance of *Aedes albopictus* and *Aedes aegypti* mosquitoes per night/trap in BG-Traps (excludes non-working traps)
- Human CHKV cases by week of report to health department (AT : Autochthonous case; I : imported)
- Human Dengue cases by week of report to the health department
- Confirmed and probable human Zika cases by week of specimen collection date
- Possible Zika Virus Infection Among Pregnant Women — United States and Territories, May 2016, <http://www.cdc.gov/mmwr/volumes/65/wr/mm6520e1.htm/>

**Table 3.** WNV Positive Gravid Mosquito Traps and Human WNV Cases by City, Dallas County, 2022

Week Ending	6/11	6/18	6/25	7/2	7/9	7/16	7/23*	YTD
MMWR Week	23	24	25	26	27	28	29	
	# WNV+ Traps	# WNV+ Traps	# WNV+ Traps	# WNV+ Traps	# WNV+ Traps	# WNV+ Traps	# WNV+ Traps	# WNV+ Traps
Addison	0	3	0	0	0	0	0	0
Balch Springs	0	3-6	0	0	0	0	0	0
Carrollton	0	7	0	0	0	0	0	0
Cedar Hill	0	5-10	0	0	0	0	0	0
Cockrell Hill	0	1-2	0	0	0	0	0	0
Coppell	0	6	0	0	0	0	0	0
Dallas	1	1-65	0	0	1	2	0	5
DeSoto	0	6-12	0	0	0	0	0	0
Duncanville	0	5-10	0	0	0	0	0	0
Farmers Branch	0	5	0	0	0	0	0	0
Garland	0	2-27	0	0	0	0	0	0
Glenn Heights	0	2-4	0	0	0	0	0	0
Grand Prairie	0	24-25	0	0	1	1	0	4
Highland Park	0	2-4	0	0	0	0	0	0
Hutchins	0	1	0	0	0	0	0	0
Irving	0	19-38	0	0	0	0	0	0
Lancaster	0	1-10	0	0	0	0	0	0
Mesquite	0	8-36	0	0	0	0	0	0
Richardson	0	12-24	0	0	0	0	0	0
Rowlett	0	1-14	0	0	0	0	0	0
Sachse	0	3-6	0	0	0	0	0	0
Seagoville	0	2	0	0	0	0	0	0
Sunnyvale	0	2-4	0	0	0	0	0	0
Unincorporated County	0	1-5	0	0	0	0	0	0
University Park	0	4-8	0	0	0	0	0	0
Wilmer	0	1	0	0	0	0	0	0
<b>Total</b>	<b>1</b>	<b>1</b>	<b>0</b>	<b>0</b>	<b>1</b>	<b>2</b>	<b>3</b>	<b>9</b>

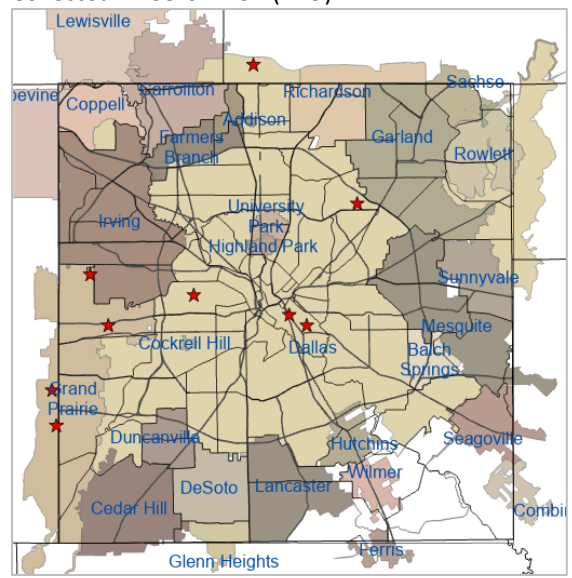
\*Data for most recent 2 weeks are preliminary, and reflect results reported as of 12:30 p.m. July 25, 2022. \*Range of numbers of traps placed weekly, in weeks 1 – 29.

**Figure 1:** All WNV Negative and Positive Mosquito Traps Collected During 2022: Weeks 1-29\* (=3,297)



★ Positive Traps      ● Negative Traps      ● Pending Traps

**Figure 2:** Cumulative WNV Positive Mosquito Traps Collected: Weeks 1-29\* (N=9)



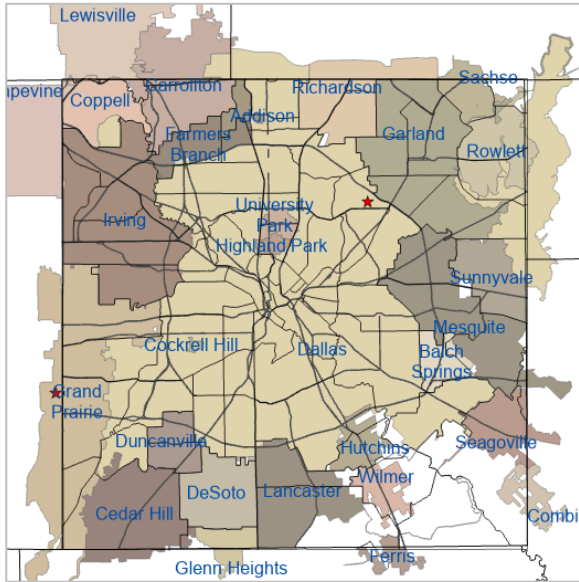
\*Data for most recent 2 weeks are preliminary.

PHONE

EMAIL

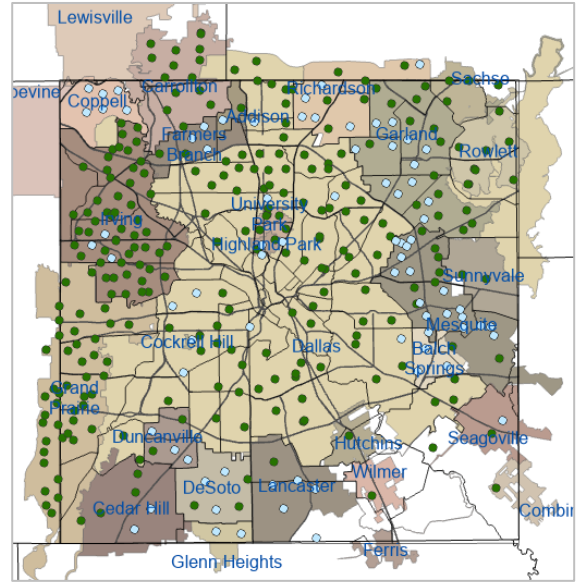
WEB

**Figure 3: WNV Positive Mosquito Traps Collected During 2022: Weeks 28 and 29\* (N=2)**



★ Positive Traps

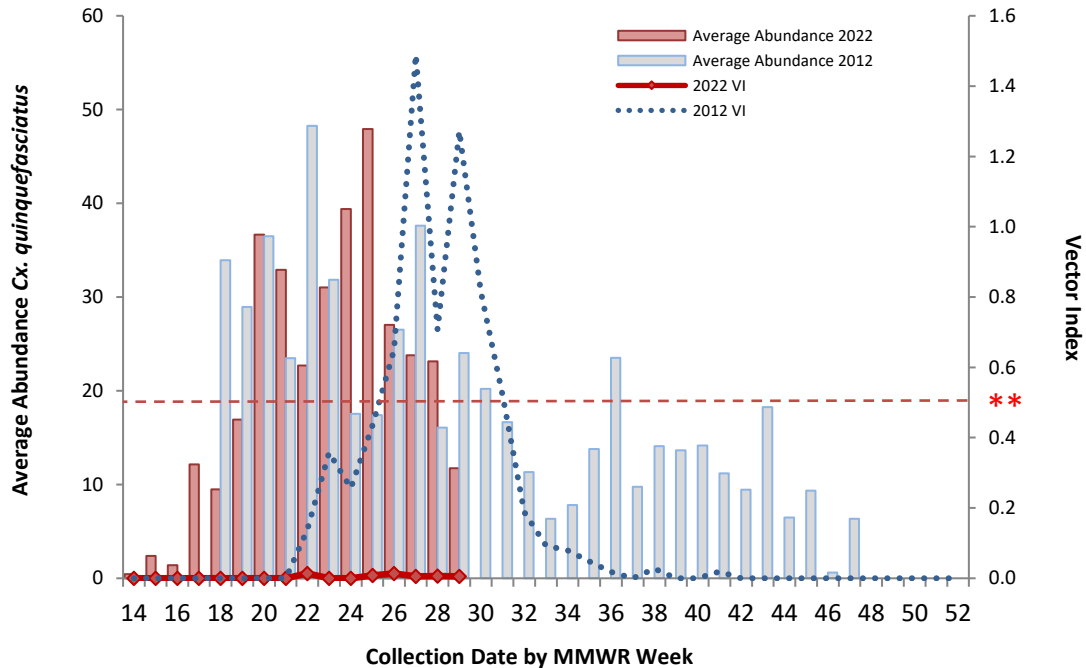
**Figure 4: Trap Counts of Female *Cx. quinquefasciatus* from 2022 Season: Weeks 1-29\***



● < 100 Mosquitoes/Trap     ○ 100 - 499 Mosquitoes/Trap  
● 500 - 1000 Mosquitoes/Trap     ● >1000 Mosquitoes/Trap

\*Figure 4 only shows traps for which results were available; malfunctioning traps were excluded. Almost all traps are at fixed sites.  
Note: Most recent 1-2 weeks data are preliminary and subject to change following receipt of data still pending.

**Figure 5: Average Numbers of Female *Cx. quinquefasciatus* per Trap-night and WNV Vector Index by Week: 2012 Season and 2022 Season (through Week 29\*)**



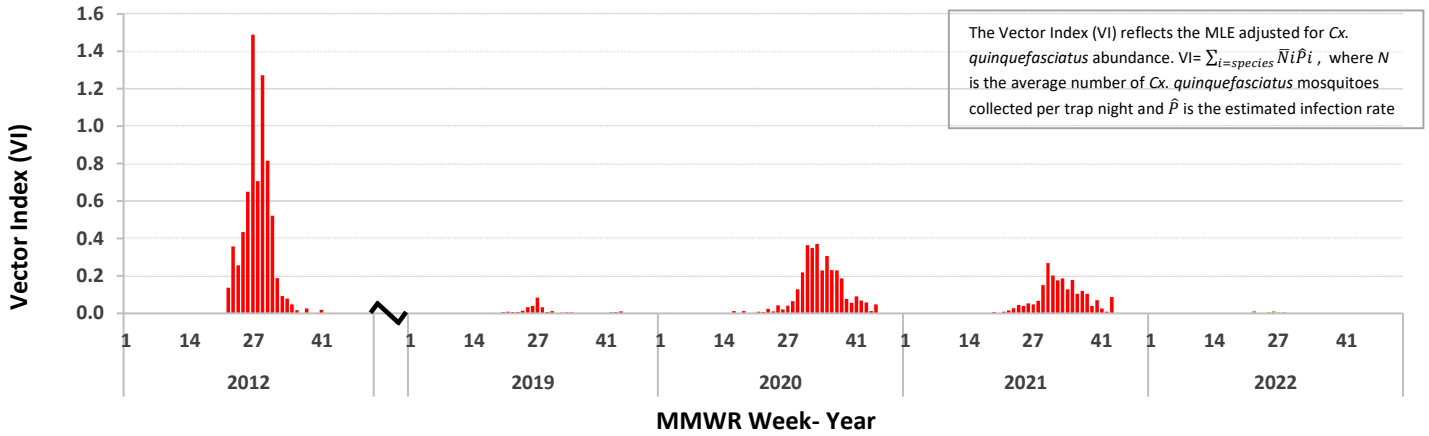
\*\* Vector Index of 0.50 is the historical threshold associated with larger local epidemics of WNV illnesses in humans.  
Note: Most recent 1-2 weeks data are preliminary and subject to change following receipt of data still pending.

PHONE

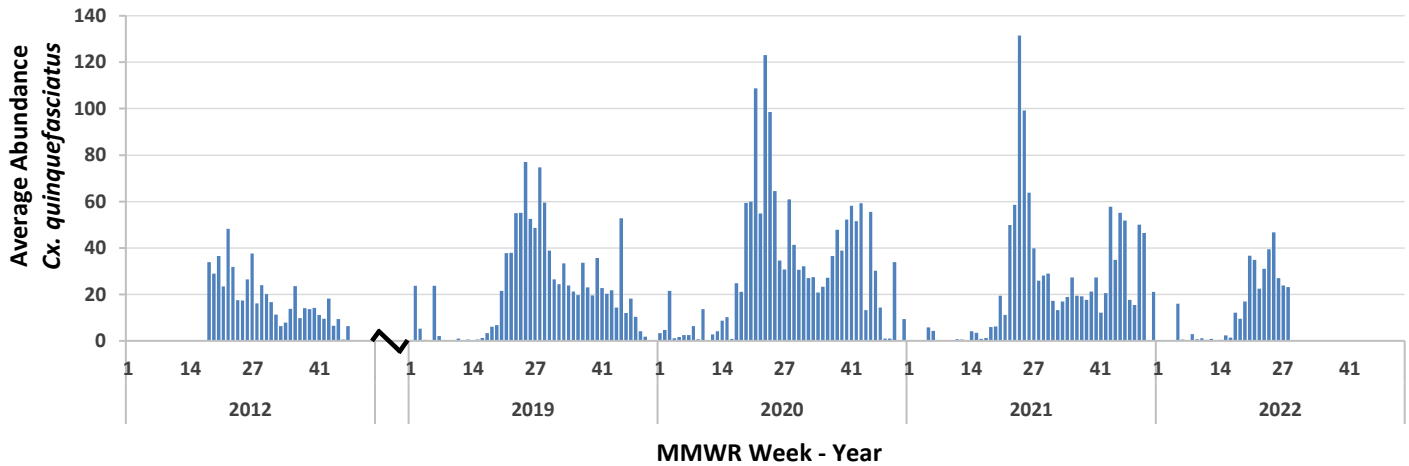
EMAIL

WEB

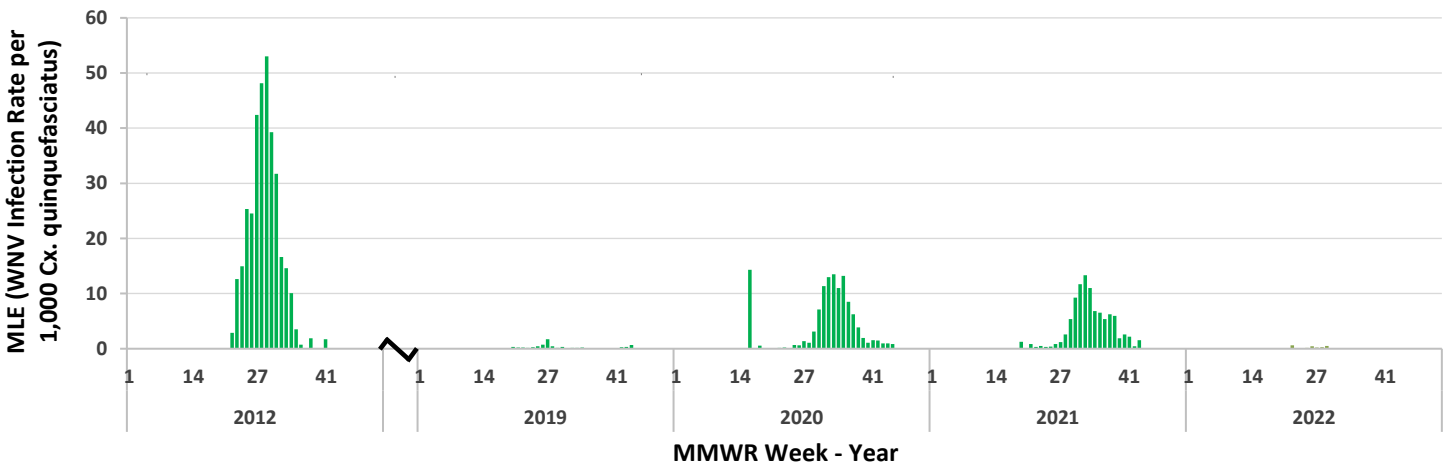
**Figure 6: WNV Vector Index by Week: 2012 - 2022 Seasons**



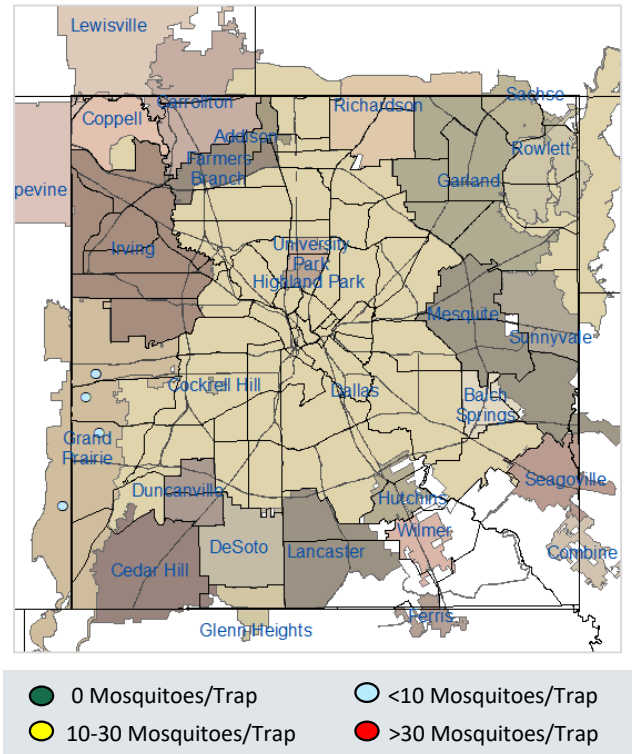
**Figure 7: Average Numbers of Female *Cx. quinquefasciatus* per Trap-night by Week: 2012 - 2021 Seasons**



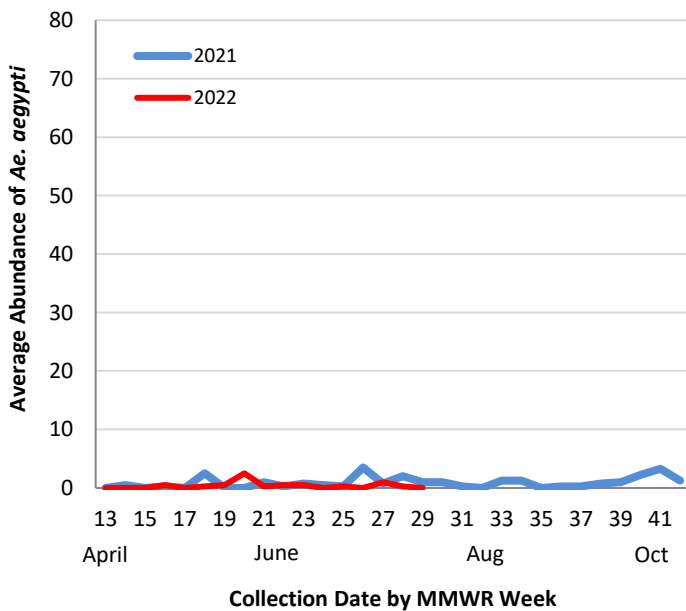
**Figure 8: MLE (WNV Infection Rate per 1,000 *Cx. quinquefasciatus*) by Week: 2012 - 2021 Seasons**



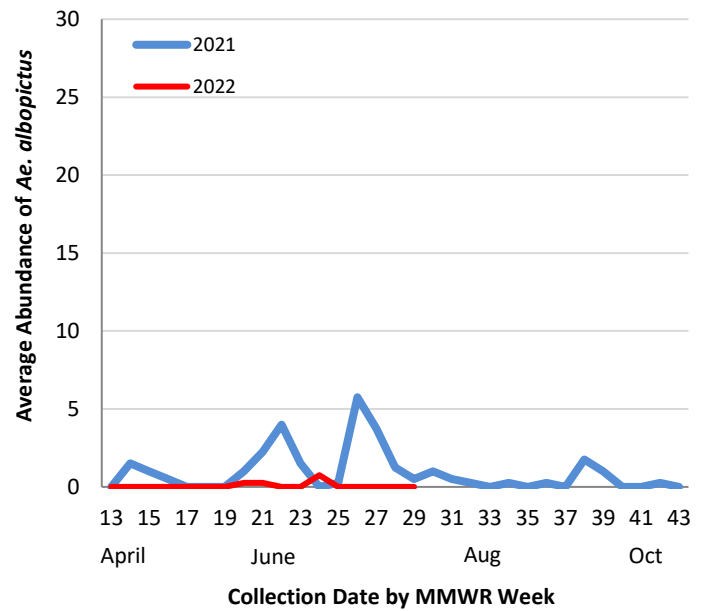
**Figure 9:** BG-Sentinel Trap Counts of Female *Aedes aegypti* and *Aedes albopictus* during 2022: Weeks 14 through 29<sup>†</sup>



**Figure 10:** Average Numbers of *Ae. aegypti* per Trap-night: 2021 and 2022 Seasons<sup>\*,†</sup>



**Figure 11:** Average Numbers of *Ae. albopictus* per Trap-night: 2021 and 2022 Seasons<sup>\*,†</sup>



<sup>\*</sup>Data for most recent 2 weeks are preliminary  
<sup>†</sup>Routine *Aedes* BG-Sentinel trapping was conducted during week 15-43 in 2021

PHONE

EMAIL

WEB

## *Acknowledgements:*

We are grateful for the partnership of the following contributors to our county-wide Arbovirus Surveillance Report:

### **Mosquito Trapping and Data from Environmental Health**

#### **Services Divisions of the Following Cities:**

Addison	Highland Park
Balch Springs	Hutchins
Carrollton	Irving
Cedar Hill	Lancaster
Cockrell Hill	Mesquite
Coppell	Richardson
Dallas	Rowlett
DeSoto	Sachse
Duncanville	Seagoville
Farmers Branch	Sunnyvale
Garland	University Park
Glenn Heights	Wilmer
Grand Prairie	

### **Mosquito Trapping and Data From:**

**DCHHS Environmental Health Services: Vector Control Division**

**Municipal Mosquito**

**Vector Disease Control International**

### **Mosquito Speciation and Laboratory Testing:**

**DCHHS Environmental Health Services: Mosquito Lab**

**DCHHS LRN Laboratory**

**DSHS Laboratory Services, Arbovirus-Entomology Team**

**Municipal Mosquito**

### **Human Case Reports and Investigations:**

**Area Acute Care Hospitals and Healthcare Providers**

**Dallas County Medical Examiner's Office**

**City of Dallas Vital Statistics Unit**

**Carter Blood Care**

**American Red Cross**

**DCHHS Acute Communicable Disease Epidemiology Division**

Arbovirus Case Investigation and Clinical Inquiries Team

*For inquiries related to this Arbovirus Surveillance Report,  
please contact: [Dongyoung Shin, Ph.D.](mailto:Dongyoung.Shin@texas.gov)*

PHONE

EMAIL

WEB

DCHHS Epidemiology

(214) 819-2004

[Epidemiology@dallascounty.org](mailto:Epidemiology@dallascounty.org)

[www.dallascounty.org/hhs](http://www.dallascounty.org/hhs)