

Bed bugs: from egg to adult

Adult female bed bugs lay up to five eggs a day.

egg

The eggs, which have a sticky outercoat, hatch in about 4 to 12 days.

first stage

During its first stage of life, the bed bug must feed on a blood meal before it can shed its outer layer and grow to the second stage.

second stage

It takes about 5 to 10 minutes for a bed bug to take a full blood meal.

third stage

Younger bed bugs need to feed weekly.

fourth stage

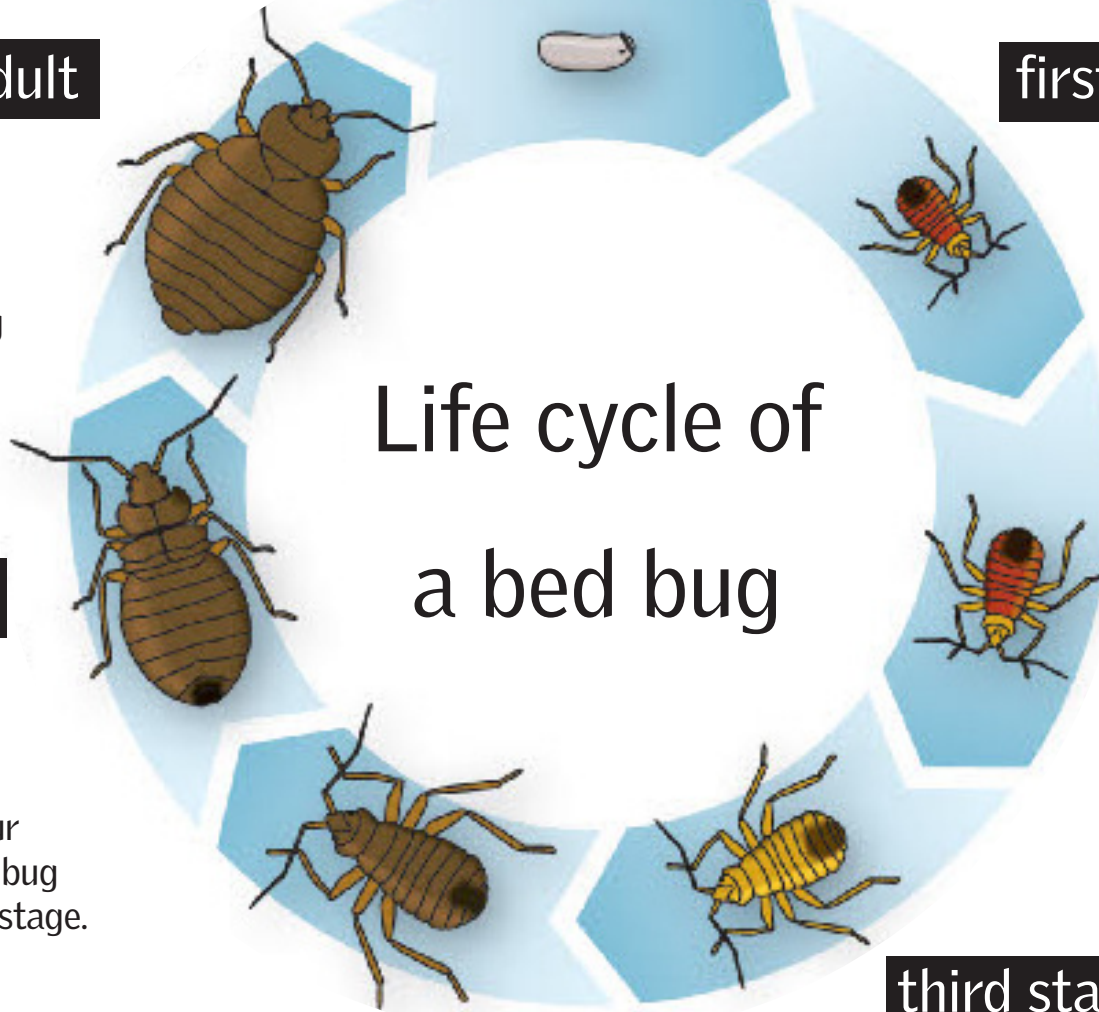
The feed-and-shed process repeats four times until the bed bug grows to the adult stage.

fifth stage

Adult bed bugs can survive for several months and can live long periods without feeding.

adult

Life cycle of
a bed bug



DCHHS
Safe families, healthy lives.

Dallas County Health and Human Services

214-819-2115 | www.dallascounty.org/hhs