

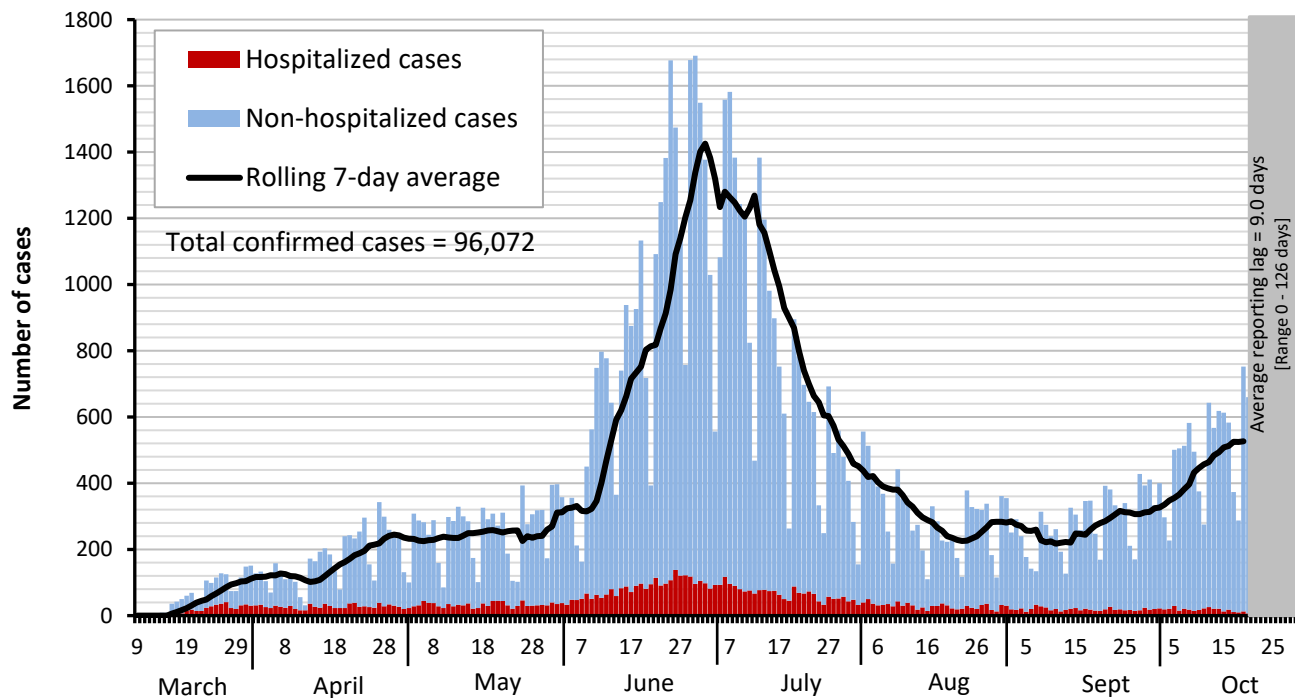


Dallas County Health and Human Services 2019 Novel Coronavirus (COVID-19) Summary

October 30, 2020

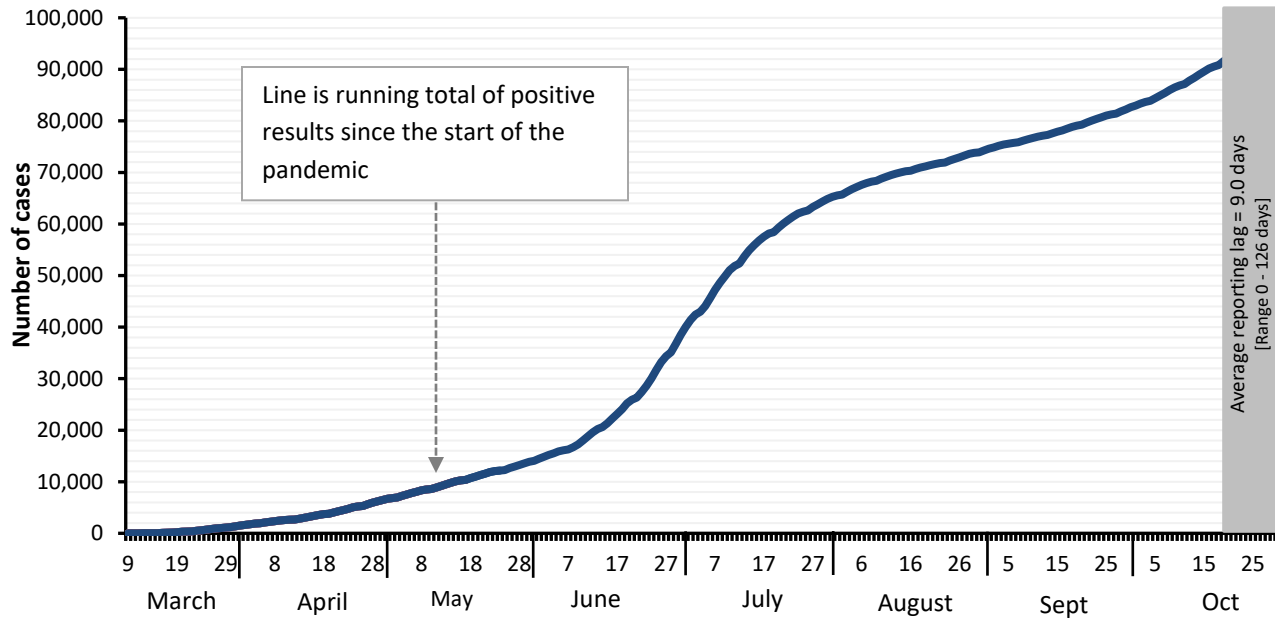
- As of October 30, 2020, DCHHS is reporting an additional 670 confirmed and 162 probable cases of 2019 novel coronavirus (COVID-19). The cumulative total number of confirmed cases in Dallas County is 96,072 including 1,114 confirmed deaths. The total probable case count is 5,811 including 14 probable deaths from COVID-19.
- The provisional 7-day average daily new confirmed and probable cases (by date of test collection) for CDC week 43 has increased to 652 – the highest daily average of new COVID-19 cases since July.
- The percentage of respiratory specimens testing positive for SARS-CoV-2 has increased to 15.4% of symptomatic patients presenting to area hospitals testing positive in week 43 (week ending 10/24/2020).
- A provisional total of 587 confirmed and probable COVID-19 cases were diagnosed in school-aged children (5 to 17 years) during CDC week 43, an over two-fold increase from the numbers of children diagnosed in this age group 4 weeks earlier (CDC week ending 9/26/2020).
- Of the 8,727 cases requiring hospitalization to date, almost three-quarters (70%) have been under 65 years of age, and over half reported having a chronic health condition. Diabetes has been an underlying high-risk health condition reported in about a third of all hospitalized patients with COVID-19.
- Twenty-four percent (24%) of deaths have been associated with long-term care facilities.

Figure 1. Confirmed COVID-19 positive cases by date of test collection, Dallas County: March 10 – October 30, 2020¹⁻⁴



1. Data received as of 8:00 pm yesterday, for residents of Dallas County tested with known specimen collection dates. This does include delayed results from previous days. All data are preliminary and subject to change as cases continue to be investigated.
2. Data are incomplete for the most recent dates. Test results may be reported to DCHHS several days after the result. The reporting lag is calculated as time from specimen collection to receipt of test results. The average reporting lag is 9.0 days, with a range from 0 – 126 days.
3. This summary graph includes only confirmed cases based on molecular amplification detection test results.
4. Bars are the number of positive molecular amplification detection tests which were collected that day.
5. Rolling 7-day average is the average number of new confirmed COVID-19 cases collected 7 days prior to value.

Figure 2. Cumulative confirmed COVID-19 cases by date of test collection, Dallas County: March 10 – October 30, 2020¹⁻²



1. Data received as of 8:00 pm yesterday, for residents of Dallas County tested with known specimen collection dates. This does include delayed results from previous days. All data are preliminary and subject to change as cases continue to be investigated.
2. Data are incomplete for the most recent dates. Test results may be reported to DCHHS several days after the result. The reporting lag is calculated as time from specimen collection to receipt of test results. The average reporting lag is 9.0 days, with a range from 0 – 126 days.

Table 1. Source of laboratory testing for confirmed cases of COVID-19, Dallas County

Source of Laboratory Testing for Reported Positive Molecular Amplification Detection Tests	# Tests (N=96,072)	% of Total Cases
Commercial or Hospital Laboratory*	94,101	98%
Dallas LRN Laboratory	1,695	<2%
Other Public Health Laboratory	276	<1%

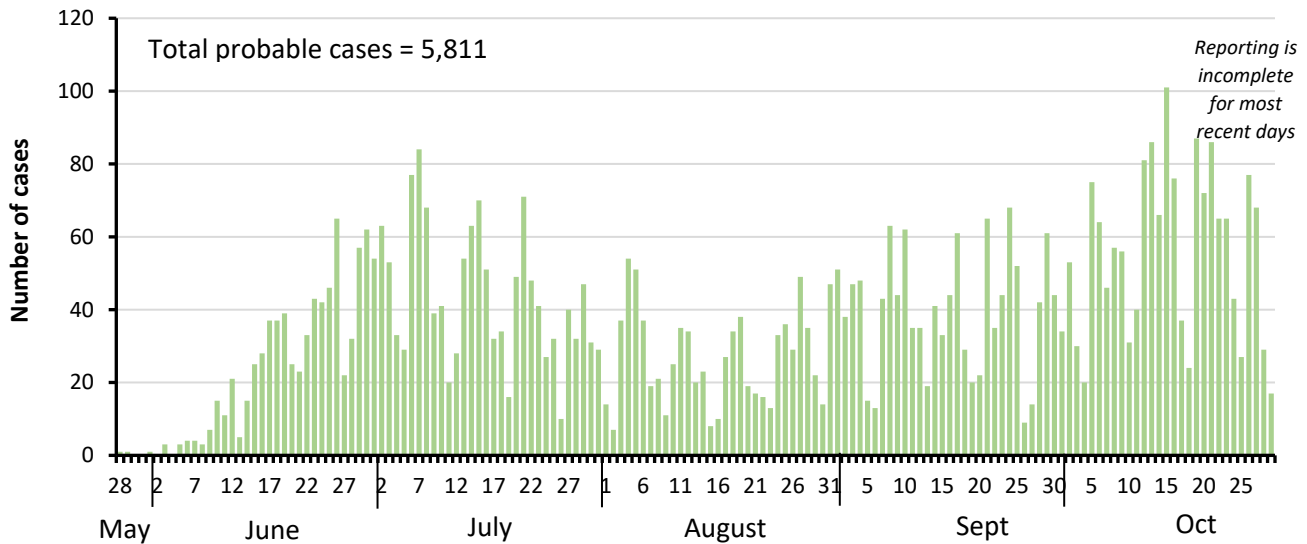
* Includes: AIT, ARUP, CPL, Excelsior, LabCorp, Magnolia, Medfusion, Prism, Quest, Viracor, and multiple hospital laboratories

Table 2. Characteristics of cumulative confirmed COVID-19 cases, Dallas County: March 9 – October 30, 2020

	Number	% of Total Cases*
Total Cases in Dallas County residents	N = 96,072	100%
Age Group (years)	0 to 17	11%
	18 to 40	46%
	41 to 64	34%
	≥65	9%
Sex	Female	51%
	Male	49%
Not Hospitalized (Includes: Outpatient, urgent care, drive-through, ED)	87,445	91%
Ever Hospitalized	8,727	9%

* Percentages calculated among cases with known age/sex

Figure 3. Probable COVID-19 cases by date of test collection, Dallas County: May 28 – October 30, 2020¹⁻⁵



1. Data received as of 8:00 pm yesterday, for residents of Dallas County tested with known specimen collection dates. This does include delayed results from previous days. All data are preliminary and subject to change as cases continue to be investigated.
2. Data are incomplete for the most recent dates. Test results may be reported to DCHHS several days after the result. The reporting lag is calculated as time from specimen collection to receipt of test results.
3. This summary graph includes only probable cases which meet below CDC case definition. Probable cases are reported separately from confirmed cases.

Table 3. Characteristics of cumulative probable COVID-19 cases, Dallas County: May 28 – October 30, 2020

		Number	% of Total Cases*
Total Probable Cases in Dallas County residents		N = 5,811	100%
Age Group (years)	0 to 17	1,491	26%
	18 to 40	2,693	46%
	41 to 64	1,313	23%
	≥65	313	5%
Sex	Female	2,956	51%
	Male	2,822	49%

* Percentages calculated among cases with known age/sex

CDC Definition of a COVID-19 case:

"A COVID-19 case includes [confirmed and probable cases and deaths](#). This change was made to reflect an interim [COVID-19 position](#) statement issued by the Council of State and Territorial Epidemiologists on April 5, 2020. The position statement included a case definition and made COVID-19 a [nationally notifiable disease](#)."

CDC Definition of a COVID-19 probable case:

"A [probable case or death](#) is defined as:

- A person meeting [clinical criteria](#) **AND** [epidemiologic evidence](#) with no confirmatory laboratory testing performed for COVID-19;
- A person meeting [presumptive laboratory evidence](#) **AND** either [clinical criteria](#) **OR** [epidemiologic evidence](#);
- A person meeting [vital records criteria](#) with no confirmatory laboratory testing performed for COVID-19."

*Centers for Disease Control and Prevention FAQ: COVID-19 Data and Surveillance:

<https://www.cdc.gov/coronavirus/2019-ncov/covid-data/faq-surveillance.html>

**See also Texas Department of State Health Services (DSHS) Case Definition:

<https://www.dshs.state.tx.us/coronavirus/docs/DSHS-COVID19CaseDefinitionandInvestigationPrioritizationGuidance.pdf>

Table 4. Number of confirmed COVID-19 cases by age group and month of collection, Dallas County

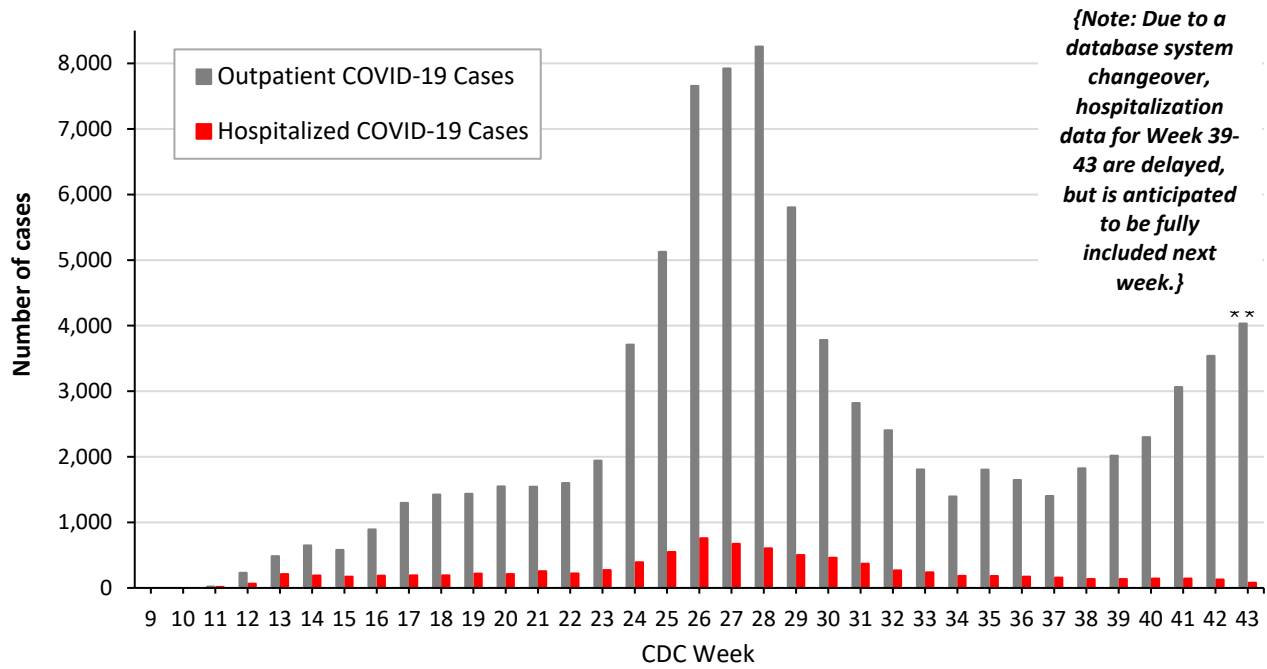
Age Group (in years)	0 to 17		18 to 22		23 to 39		40 to 64		≥65	
Month of Diagnosis	N	%	N	%	N	%	N	%	N	%
March	27	2%	52	4%	430	31%	642	47%	224	16%
April	294	6%	298	6%	1,600	31%	2,303	44%	645	13%
May	755	10%	601	9%	2,403	32%	2,937	39%	770	10%
June	2,378	10%	2,262	9%	9,884	41%	7,836	33%	1,675	7%
July	3,160	12%	2,374	9%	8,854	34%	9,564	36%	2,328	9%
August	1,050	12%	953	11%	2,795	32%	3,108	35%	913	10%
September	908	11%	999	12%	2,856	35%	2,790	34%	675	8%
October (thru 10/30)	1,675	13%	1,134	9%	4,298	33%	4,478	35%	1,308	10%

Table 5. Confirmed and Probable School-Aged Cases (5 to 17 years) by CDC week of test collection

City of Residence	Week 38 (ending 9/19)	Week 39 (ending 9/26)	Week 40 (ending 10/3)	Week 41 (ending 10/10)	Week 42 (ending 10/17)	Week 43 (ending 10/24)
Addison	1	2	1	0	0	1
Balch Springs	6	2	2	4	6	3
Carrollton	6	7	5	6	18	13
Cedar Hill	3	1	5	9	10	10
Cockrell Hill	2	0	0	0	0	0
Combine	0	0	0	0	0	0
Coppell	4	5	2	3	13	4
Dallas	104	95	129	217	235	276
DeSoto	8	6	3	10	13	28
Duncanville	1	3	4	7	5	8
Farmers Branch	0	6	4	5	6	3
Ferris	0	0	0	0	0	0
Garland	32	30	31	32	39	49
Glenn Heights	1	0	0	0	1	4
Grand Prairie	12	9	21	32	24	43
Highland Park	3	4	2	2	2	0
Hutchins	0	0	0	3	0	2
Irving	16	24	25	45	52	44
Lancaster	3	2	5	6	6	6
Lewisville	0	0	0	0	0	0
Mesquite	13	23	27	38	42	58
Ovilla	0	0	0	0	0	0
Richardson	8	11	7	7	14	17
Rowlett	6	7	14	8	1	8
Sachse	2	2	3	2	2	1
Seagoville	0	2	6	1	2	6
Sunnyvale	1	2	0	1	0	1
University Park	3	6	8	5	4	2
Wilmer	1	0	1	2	1	0
Wylie	0	2	0	1	0	0
Unknown	0	0	0	0	0	0
Total	236	251	305	446	496	587

1. Children ages 5 to 17 years of age residing in Dallas County, with positive molecular or antigen test results received as of 8:00 pm yesterday. All data are preliminary and subject to change as cases continue to be investigated
2. Does not include individuals who attend a school in Dallas County, but does not reside in Dallas County. Does not include staff.

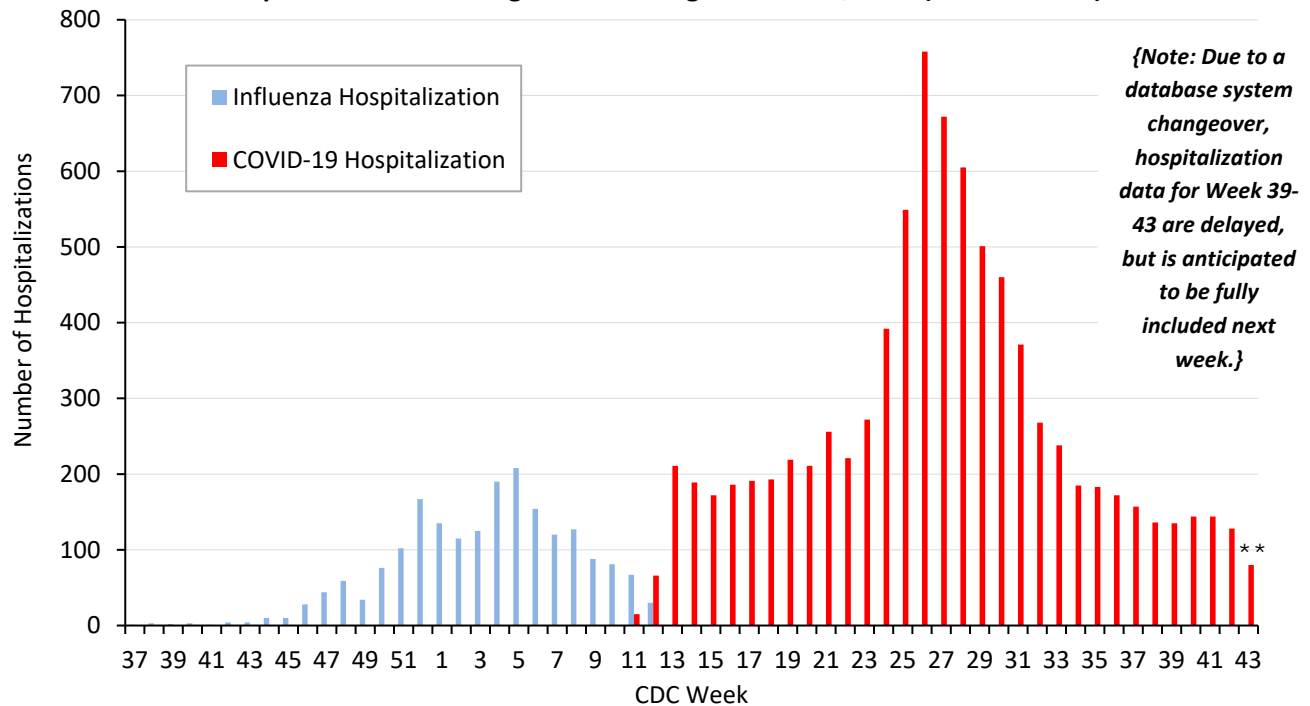
Figure 5. Non-hospitalized and hospitalized confirmed COVID-19 cases by week of test collection, Dallas County: September 2019 through week ending October 24, 2020 (CDC Week 43)*



* Non-hospitalized includes all patients not admitted to acute-care hospitals (e.g. outpatient, urgent care, drive-through, ED-only, LTCF) and diagnosed with confirmed COVID-19. All data are preliminary and subject to change as cases continue to be received and investigated.

** Data are incomplete for the most recent dates. Test results may be reported to DCHHS several days after the result. The reporting lag is calculated as time from specimen collection to receipt of molecular amplification detection test results.

Figure 6. Influenza and confirmed COVID-19 hospitalizations by week of admission, Dallas County: September 2019 through week ending October 24, 2020 (CDC Week 43)*



* Hospitalized Dallas County residents diagnosed with confirmed COVID-19 by molecular amplification detection testing. All data are preliminary and subject to change as cases continue to be received and investigated.

** Data are incomplete for the most recent dates. Test results may be reported to DCHHS several days after the result. The reporting lag is calculated as time from specimen collection to receipt of test results.

Table 6. Characteristics of cumulative hospitalized confirmed COVID-19 cases, Dallas County: March 10 – October 30, 2020

		Hospitalized Cases	%
<i>Ever Hospitalized</i>		N = 8,727	9% of Total Cases
Admitted to Intensive Care Unit		2,050	24%
Mechanical Ventilation		1,103	13%
Sex	Male	4,575	52%
	Female	4,152	48%
Age Group (years)	0-17	231	3%
	18-40	2,018	23%
	41-64	3,791	43%
	≥65	2,687	31%
Presence of ≥1 high risk condition		4,929	56%
Diabetes		2,621	30%
Lung Disease (e.g. COPD, asthma)		925	11%
Heart Disease (e.g. CHF)		1,189	14%
Kidney Disease (e.g. ESRD, dialysis)		924	11%
Cancer, Immune-compromise		602	7%
Obesity		1,501	17%
Race/ Ethnicity	White	1,484	17%*
	Hispanic	4,449	51%*
	Black	1,904	22%*
	Other	312	3%*
	Non-reported/ Unknown	578	7%

* Percentages can also be calculated to exclude cases for which race/ethnicity was not reported

Table 7. Characteristics of cumulative confirmed COVID-19 deaths, Dallas County: March 10 – October 30, 2020

<i>Death classified as confirmed if decedent was a Dallas County resident with a positive molecular test. Data are obtained from ME office, hospitals, and vital statistics.</i>		Confirmed Deaths	% ¹
		N = 1,114	1.2% of Total Cases
Sex	Male	702	63%
	Female	412	37%
Age Group (years)	0-17	2	<1%
	18-40	50	4%
	41-64	368	33%
	≥65	694	62%
Resident of a Long-Term Care Facility		268	24%
Presence of ≥1 high risk condition		827	78%
Diabetes		506	48%
Race/ Ethnicity	White	279	25% (29% of population) ²
	Hispanic	518	46% (41% of population) ²
	Black	272	24% (24% of population) ²
	Asian	32	3% (7% of population) ²

¹ Percentages calculated among those with known underlying health conditions or race/ethnicity as reported by medical provider

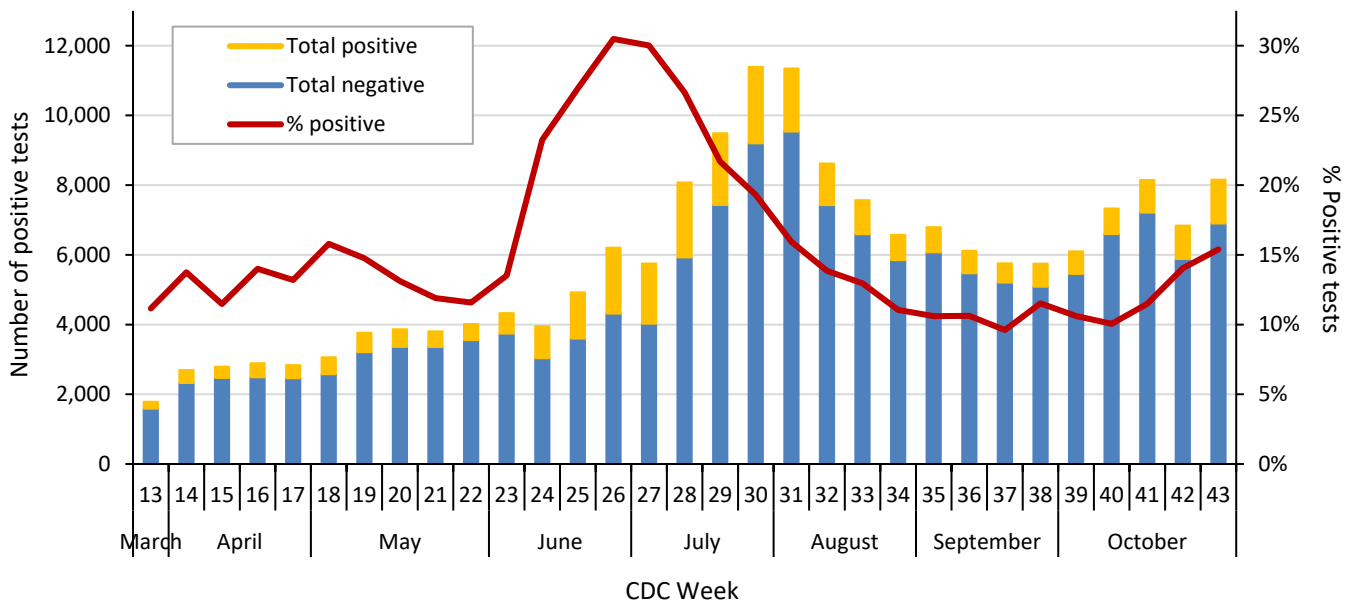
² 2019 U.S. Census population estimates for Dallas County

Table 8. Respiratory virus testing by North Texas hospitals participating in public health surveillance programs: August 16 – October 24, 2020 (CDC Weeks 34-43)¹⁻²

Week Ending		8/22	8/29	9/5	9/12	9/19	9/26	10/3	10/10	10/17	10/24
SARS-CoV-2	Positive	726	720	650	553	662	647	737	936	961	1,255
	Total Tests	6,572	6,793	6,119	5,757	5,748	6,098	7,331	8,148	6,841	8,154
Novel Coronavirus	% Positive	11.0%	10.6%	10.6%	9.6%	11.5%	10.6%	10.1%	11.5%	14.0%	15.4%
Influenza	Positive	0	0	0	0	0	0	0	0	0	0
	Total Tests	65	136	199	185	190	215	231	91	105	106
	% Positive	0%	0%	0%	0%	0%	0%	0%	0%	0%	0%
Seasonal (non-SARS-2) Coronavirus	Positive	0	0	0	0	0	0	0	0	0	0
	Total Tests	23	45	62	71	37	72	60	69	83	84
	% Positive	0%	0%	0%	0%	0%	0%	0%	0%	0%	0%
Adenovirus (respiratory)	Positive	0	1	1	2	0	3	2	1	4	2
	Total Tests	65	128	178	158	136	168	162	69	83	84
	% Positive	0%	0.8%	0.6%	1.3%	0%	1.8%	1.2%	1.4%	4.8%	2.4%
Metapneumovirus	Positive	0	0	0	0	0	0	0	0	0	0
	Total Tests	65	128	178	158	136	168	162	69	83	84
	% Positive	0%	0%	0%	0%	0%	0%	0%	0%	0%	0%
Rhinovirus/Enterovirus	Positive	4	16	16	21	21	26	23	21	36	35
	Total Tests	65	128	178	158	136	168	162	69	83	84
	% Positive	6.1%	12.5%	9.0%	13.3%	15.4%	15.5%	14.2%	30.4%	43.4%	41.7%
RSV	Positive	0	0	0	0	0	0	0	0	0	0
	Total Tests	65	113	187	164	147	189	185	91	105	106
	% Positive	0%	0%	0%	0%	0%	0%	0%	0%	0%	0%

Data sources: National Respiratory and Enteric Virus Surveillance System and an additional subset of hospitals voluntarily reporting surveillance PCR data directly to DCHHS. Testing denominators include out-of-county patients and testing performed only through hospitals in Dallas County. (Does not include FEMA drive-thru clinics). Data are incomplete for the most recent dates.

Figure 7. SARS-CoV-2 positive PCR tests reported to DCHHS by hospital laboratories: March 22 – October 17, 2020 (CDC Weeks 26-43)¹⁻²



1. Data received as of 8:00 pm yesterday. All data are preliminary and subject to change as cases continue to be received and investigated.
 2. Data are incomplete for the most recent dates. Test results may be reported to DCHHS several days after the result.

Table 9. Transmission risk factors for cumulative confirmed COVID-19 cases, Dallas County

<i>Exposure Risk Factor</i>	Cases (N= 96,072)	% of Total Cases
International Travel	124	0.1%
Domestic Travel (Out-of-state)	325	0.3%
Cruise Ship Travel	14	<0.1%
Long-Term Care Facility (Resident) ¹	1,790	1.9%
County Jail (Inmate)	761	0.8%
State Jail (Inmate-- TDCJ COVID-19 Medical Action Center) ²	96	0.1%
Federal Prison (Inmate) ³	1,396	1.5%
Homeless Shelter	93	0.1%
Meat/Food Processing Facilities	591	0.6%
Close contact or Presumed Community Transmission ⁴	90,882	94.6%

¹ Does not include over 565 COVID-19 cases reported in LTCF staff members employed by the > 112 affected LTCFs.

² Texas Department of Criminal Justice cases are under the jurisdiction of the Texas Department of State Health Services for investigation

³ Federal prison cases are under the jurisdiction of the federal government for investigation, but are now included in total County cases

⁴ Includes: household transmission and cases with no other exposure risk factors identified

Table 10. Summary of weekly COVID-19 hospitalizations and deaths from Dallas County hospitals, Vital Statistics and Medical Examiner's office¹⁻⁴

Week Ending	08/22	08/29	09/05	09/12	09/19	09/26	10/03	10/10	10/17	10/24	09/08/19– Present
CDC Week	34	35	36	37	38	39	40	41	42	43	Present
COVID-19 hospitalizations ¹	185	183	172	157	136	135	144	144	128	80	8,727*
COVID-19 ICU admissions ¹	44	37	23	34	26	23	29	29	23	18	2,050*
Probable COVID-19-associated deaths ²	0	0	0	0	0	1	0	0	0	0	14*
Confirmed COVID-19-associated deaths ³	42	39	22	17	15	12	13	15	14	9	1,114*

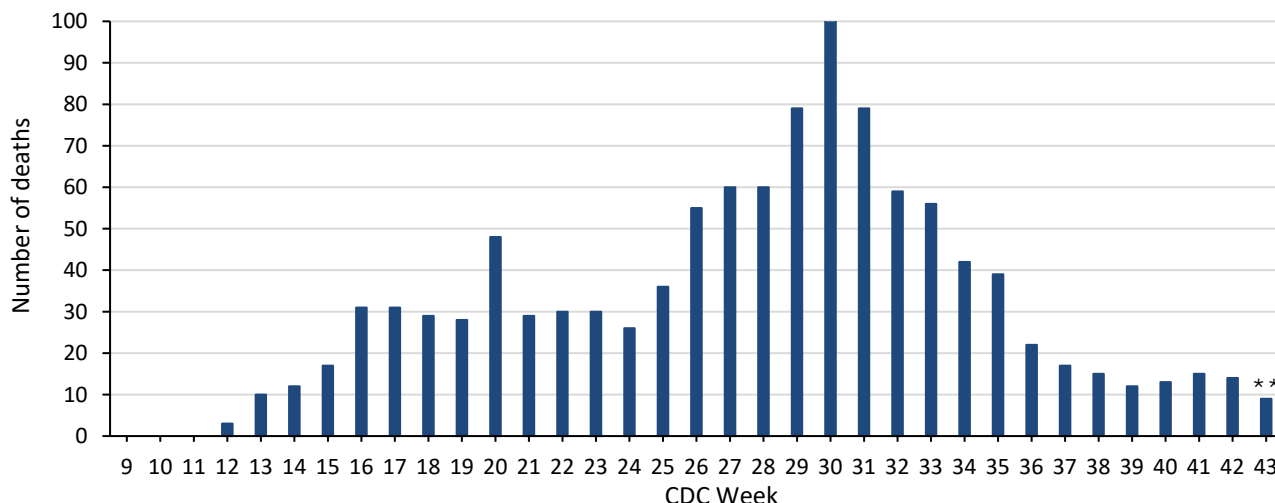
* All data are preliminary and subject to change as cases continue to be received and investigated.

¹ Reflects all COVID-19-associated hospitalizations and intensive care unit admissions reported from area hospitals within Dallas County by week of admission. Hospitalizations are inclusive of ICU admissions. Data are preliminary and include reports received as of 8:00 pm yesterday.

² Probable COVID-19 deaths as defined by CSTE interim case classification criteria--meeting vital records criteria without molecular lab test confirmation.

³ Confirmed COVID-19 deaths as defined by a positive molecular amplification detection test *and* any of the following: (1) death certificate denotation, (2) medical record documentation of compatible symptoms and clear progression from illness to death, or (3) determination by the County Medical Examiner's office (ME) of no alternate cause of death. Does not include possible COVID-19 -associated deaths with pending determination of cause of death.

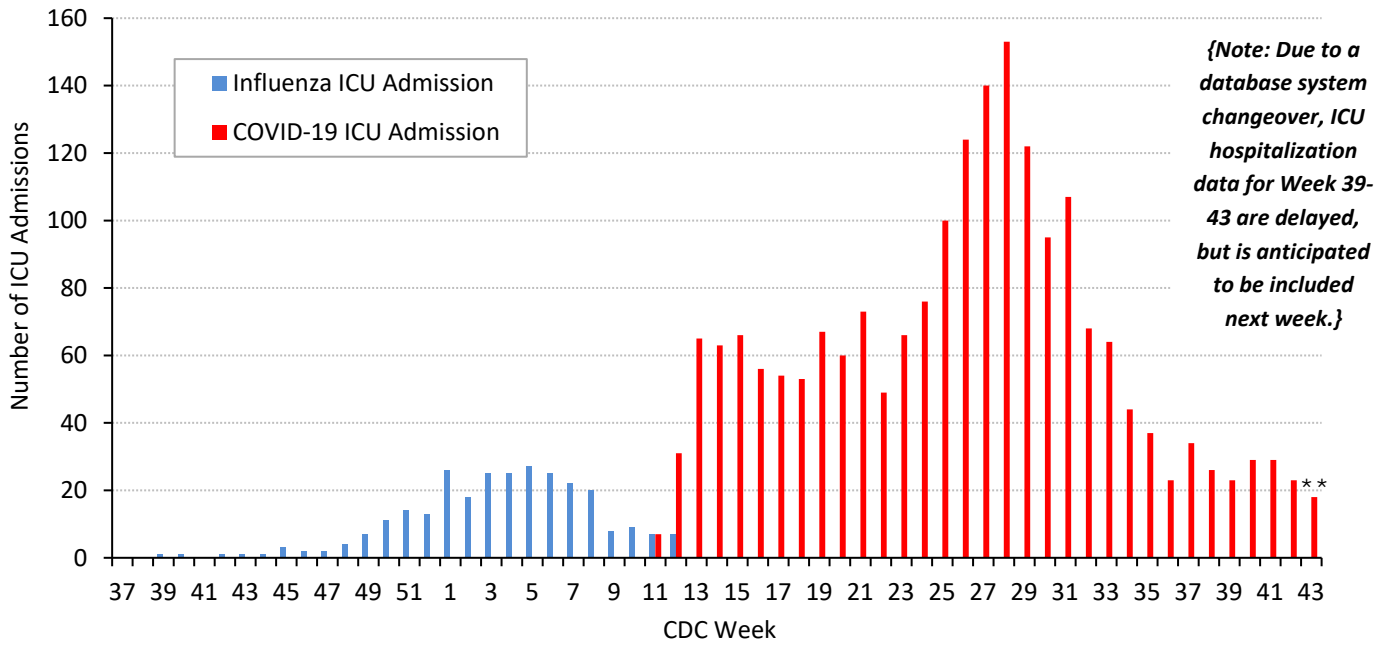
Figure 8. Confirmed COVID-19-associated deaths by week of death, Dallas County: March 2019 through week ending October 24, 2020 (CDC Week 43)*



* Dallas County residents diagnosed with confirmed COVID-19 by molecular amplification detection testing.

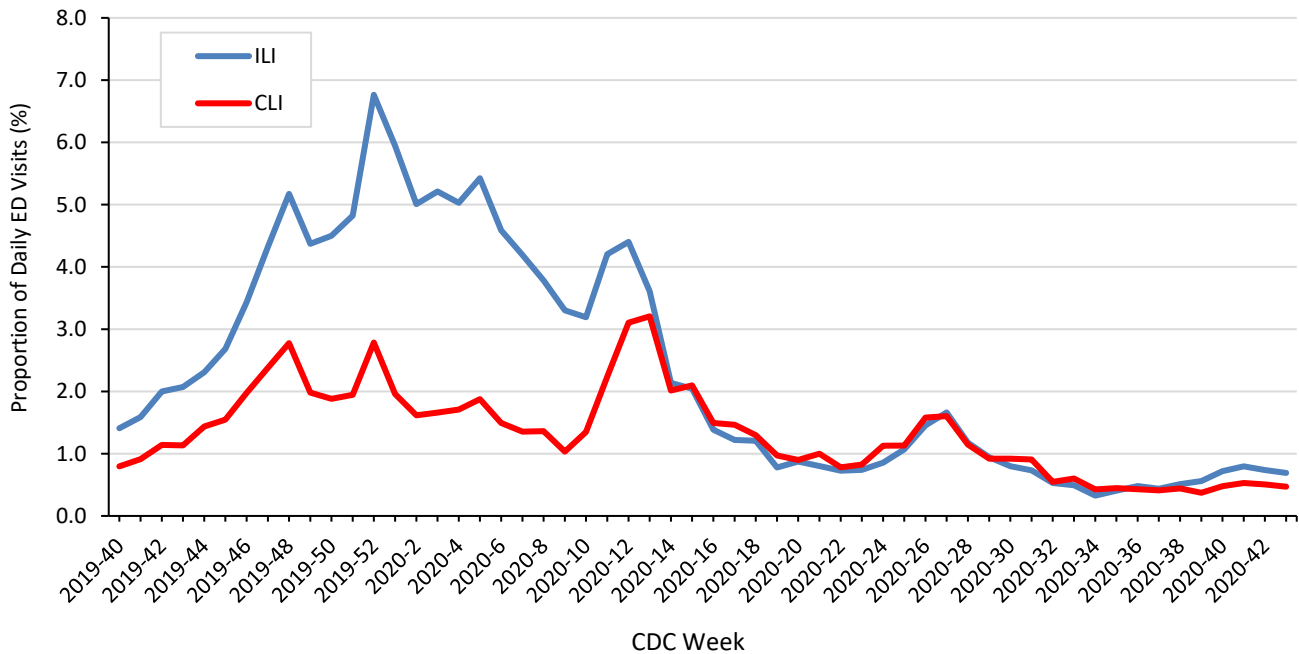
** All data are preliminary and subject to change as cases continue to be received and investigated.

Figure 9. Intensive care unit hospitalizations for influenza and COVID-19 by week of admission, Dallas County: September 2019 through week ending October 24, 2020 (CDC Week 43)*



* New ICU admissions of Dallas County residents reported with confirmed COVID-19 by molecular amplification detection testing as of 8:00 pm yesterday. Hospitalized patients with self-reported residence from outside of Dallas County are not included.
 ** All data are preliminary and subject to change as cases continue to be received and investigated.

Figure 10. Syndromic surveillance of emergency department visits for COVID-like illness (CLI)* and Influenza-like illness (ILI), Dallas County: September 29, 2019 – October 24, 2020 (CDC Week 43)**



ESSENCE Data is from 18 hospital emergency departments voluntarily reporting numbers of persons presenting with self-reported chief complaints.
 * CLI is defined as chief complaint of fever and cough or shortness of breath or difficulty breathing.
 **ILI is defined as chief complaint of fever and cough or sore throat or mention of influenza.

Table 11. Cumulative COVID-19 cases by city of residence within Dallas County as of October 30, 2020*(e.g. Does not include cases who reside in portions of cities which are not within Dallas County.)*

<i>City of Residence</i>	Confirmed Cases (N=96,072)	Probable Cases (N=5,811)	Total Confirmed + Probable Cases reported in 14 day period from 10/4 – 10/17*	Estimated COVID-19 Prevalence (%) in 14 day period from 10/4 – 10/17** (lower – upper estimate range)
Addison	408	24	31	0.57 - 1.91
Balch Springs	1,046	67	81	0.97 - 3.24
Carrollton	1,658	94	157	0.83 - 2.76
Cedar Hill	1,588	80	162	1.03 - 3.42
Cockrell Hill	208	11	18	1.30 - 4.33
Combine	13	1	1	0.34 - 1.13
Coppell	566	145	81	0.60 - 2.00
Dallas	49,369	2,878	3,631	0.86 - 2.88
DeSoto	1,791	48	174	0.99 - 3.28
Duncanville	1,602	79	164	1.27 - 4.23
Farmers Branch	930	83	97	0.60 - 2.01
Ferris	5	0	0	N/A
Garland	8,611	126	651	0.82 - 2.72
Glenn Heights	226	13	23	0.67 - 2.24
Grand Prairie	4,953	568	447	1.00 - 3.35
Highland Park	118	51	14	0.46 - 1.54
Hutchins	257	3	12	0.61 - 2.05
Irving	9,504	395	849	1.06 - 3.54
Lancaster	1,482	56	134	1.02 - 3.42
Lewisville	1	1	0	N/A
Mesquite	5,500	475	482	1.03 - 3.42
Ovilla	1	0	0	N/A
Richardson	1,772	167	172	0.60 - 1.99
Rowlett	1,327	39	126	0.64 - 2.13
Sachse	303	8	35	0.59 - 1.96
Seagoville	2,063	42	55	0.98 - 3.27
Sunnyvale	173	35	25	1.10 - 3.65
University Park	342	313	70	0.84 - 2.80
Wilmer	244	6	17	1.07 - 3.56
Wylie	11	3	1	0.48 - 1.62
Dallas County	96,072	5,811	7,710	0.88 - 2.93

*Sum of confirmed and probable cases by date of test collection, for 14 day timeframe from: October 4– October 17, 2020. Most recent 2 weeks not included due to average reporting lag of 9.0 days. Case numbers are only for portions of each city which are within Dallas County.

**Estimated COVID-19 prevalence rate ranges calculated based on: Fox SJ, Lachmann M, Meyers LA. "COVID-19 Campus Introduction Risks for School Reopenings" presented to the TEA on July 22, 2020. Denominator populations are only for portions of each city which are within Dallas County.
https://sites.cns.utexas.edu/sites/default/files/cid/files/covid-19_school_introduction_risks.pdf?m=1595468503

**Table 12. Summary of weekly COVID-19 confirmed and probable cases and deaths, Dallas County
(CDC Weeks 29 - 43)**

CDC Week	Week Ending	Total Confirmed and Probable Cases	Total School-Aged Cases (5 to 17 years)	Daily Average New Confirmed and Probable Cases*	Daily Average New Confirmed and Probable Deaths**	Percentage of Tests Positive for SARS-CoV-2***
29	7/18/2020	6,620	675	946	11	21.7%
30	7/25/2020	4,516	482	645	15	19.3%
31	8/1/2020	3,363	415	480	12	15.9%
32	8/8/2020	2,888	313	413	9	13.8%
33	8/15/2020	2,178	182	311	9	13.0%
34	8/22/2020	1,738	187	248	6	11.0%
35	8/29/2020	2,202	184	315	6	10.6%
36	9/5/2020	2,050	150	293	3	10.6%
37	9/12/2020	1,853	183	265	2	9.6%
38	9/19/2020	2,203	236	315	2	11.5%
39	9/26/2020	2,440	251	349	2	10.6%
40	10/3/2020	2,710	305	387	2	10.1%
41	10/10/2020	3,547	446	507	2	11.5%
42	10/17/2020	4,163	496	595	2	14.0%
43	10/24/2020	4,566	587	652	1	15.4%

* For 7-day time period for respective CDC week by date of test collection

** For 7-day time period for respective CDC week by date of death

*** See Table 6 for historical data

Many Thanks to:

Our area hospitals and healthcare providers for reporting lab-confirmed COVID-19 cases

Our DCHHS Case and Contact Investigations Team volunteers from:

Dallas County Medical Society

UT Southwestern Medical School

Texas A&M College of Medicine

UTHealth School of Public Health

Retired School Nurses

New COVID-19 cases are reported as a daily aggregate, with this cumulative summary updated Tuesdays and Fridays.

DCHHS COVID-19 Summaries and Case Report Form are accessible at:

<https://www.dallascounty.org/departments/dchhs/2019-novel-coronavirus.php>

DCHHS Acute Communicable Disease Epidemiology Division: COVID-19@dallascounty.org