

Dallas County Health and Human Services Heat-Related Illness Surveillance Report



Week 30 ending July 29, 2017

Figure 1. Reported Heat-Related Illness (HRI) by Type

Week Ending MMWR Week	6/10 23	6/17 24	6/24 25	7/1 26	7/8 27	7/15 28	7/22 29	7/29 30	Total YTD
Heat Cramps	0	12	5	5	6	11	21	23	91
Heat Exhaustion	2	5	5	5	6	6	13	14	60
Heat Stroke	0	1	1	1	3	2	3	3	15
Deaths*	0	0	0	0	0	0	0	0	0
Total HRI	2	18	11	11	15	19	37	40	166

Figure 2. HRI Reports by Gender and Age

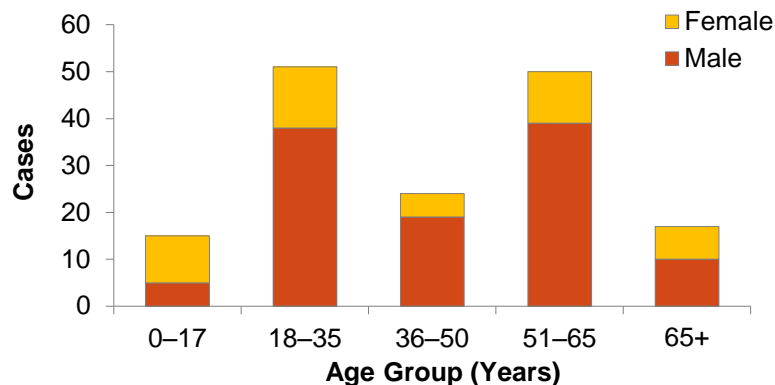
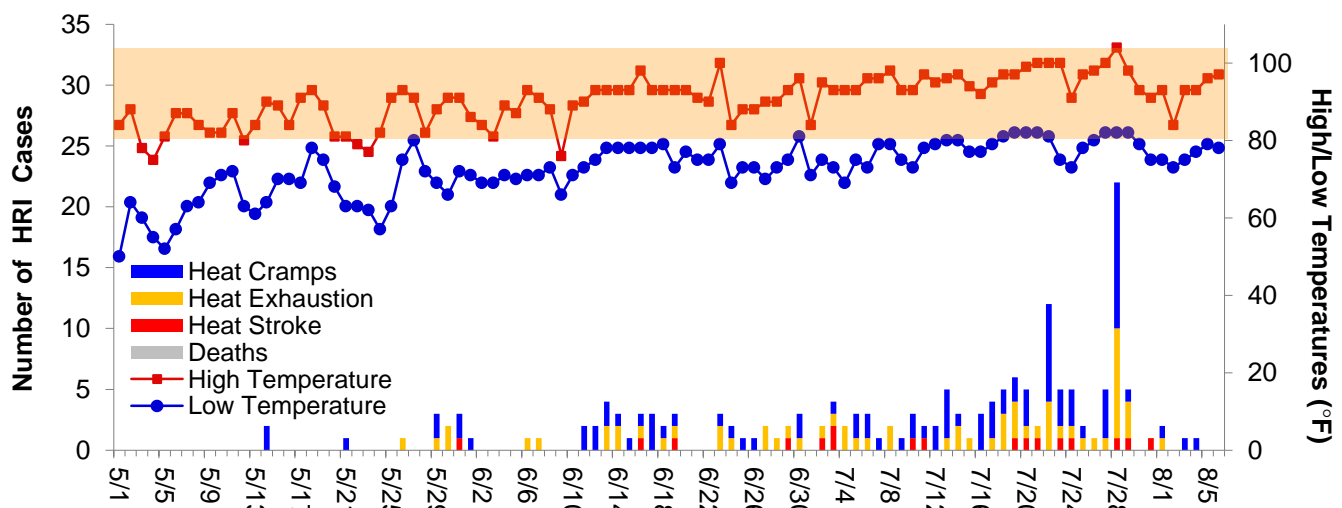


Figure 3. Daily Temperatures versus HRI Reports in Dallas County



Peak temperatures forecasted for this weekend are in the high 90s°F with overnight lows predicted to be in the high 70s°F.

Data obtained from hospitals participating in the Electronic Surveillance System for the Early Notification of Community-based Epidemics (ESSENCE) from May 1, 2017 through the present. Depicted are the numbers of patients presenting to Emergency Departments in Dallas County hospitals with heat-related chief complaints. Data also obtained from reports received from Dallas County Medical Examiner's Office.

*Includes only deaths which have been confirmed by Medical Examiner's office as heat-related.