

Dallas County Health and Human Services Heat-Related Illness Surveillance Report



Week 31 ending August 5, 2017

Figure 1. Reported Heat-Related Illness (HRI) by Type

Week Ending	6/17	6/24	7/1	7/8	7/15	7/22	7/29	8/5	Total YTD
MMWR Week	24	25	26	27	28	29	30	31	
Heat Cramps	12	5	5	6	11	21	22	5	95
Heat Exhaustion	5	5	5	4	6	13	14	5	63
Heat Stroke	1	1	1	3	2	3	3	1	16
Deaths*	0	0	0	0	0	0	0	0	0
Total HRI	18	11	11	13	19	37	39	11	175

Figure 2. HRI Reports by Gender and Age

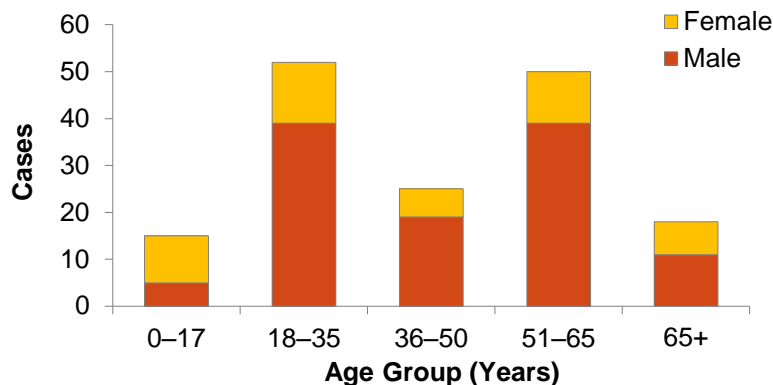
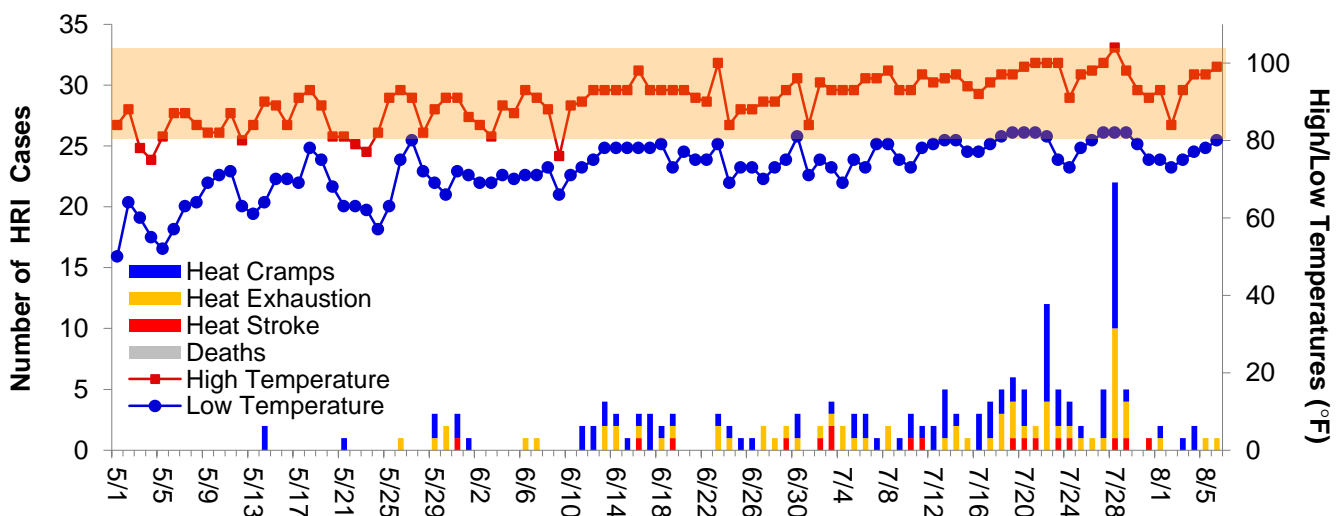


Figure 3. Daily Temperatures versus HRI Reports in Dallas County



Peak temperatures forecasted for this weekend are in the high 90s°F with overnight lows predicted to be in the high 70s°F.

Data obtained from hospitals participating in the Electronic Surveillance System for the Early Notification of Community-based Epidemics (ESSENCE) from May 1, 2017 through the present. Depicted are the numbers of patients presenting to Emergency Departments in Dallas County hospitals with heat-related chief complaints. Data also obtained from reports received from Dallas County Medical Examiner's Office.

*Includes only deaths which have been confirmed by Medical Examiner's office as heat-related.