

# Dallas County Health and Human Services Heat-Related Illness Surveillance Report



Week 25 ending June 23, 2018

Figure 1. Reported Heat-Related Illness (HRI) by Type

Week Ending MMWR Week	5/19 20	5/26 21	6/02 22	6/09 23	6/16 24	6/23 25	6/30 26*	Total YTD
Heat Cramps	4	7	22	13	8	7	7	72
Heat Exhaustion	5	8	34	23	17	17	12	123
Heat Stroke	0	0	6	6	3	2	2	21
Deaths <sup>+</sup>	0	0	0	0	0	0	0	0
<b>Total HRI</b>	<b>9</b>	<b>15</b>	<b>62</b>	<b>42</b>	<b>28</b>	<b>26</b>	<b>21</b>	<b>216</b>

Figure 2. HRI Reports by Gender and Age

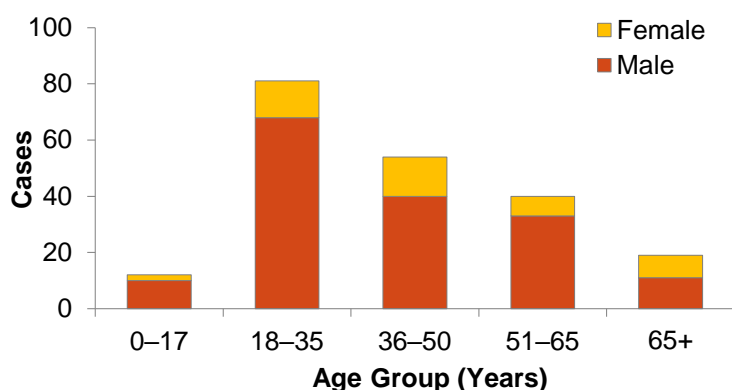
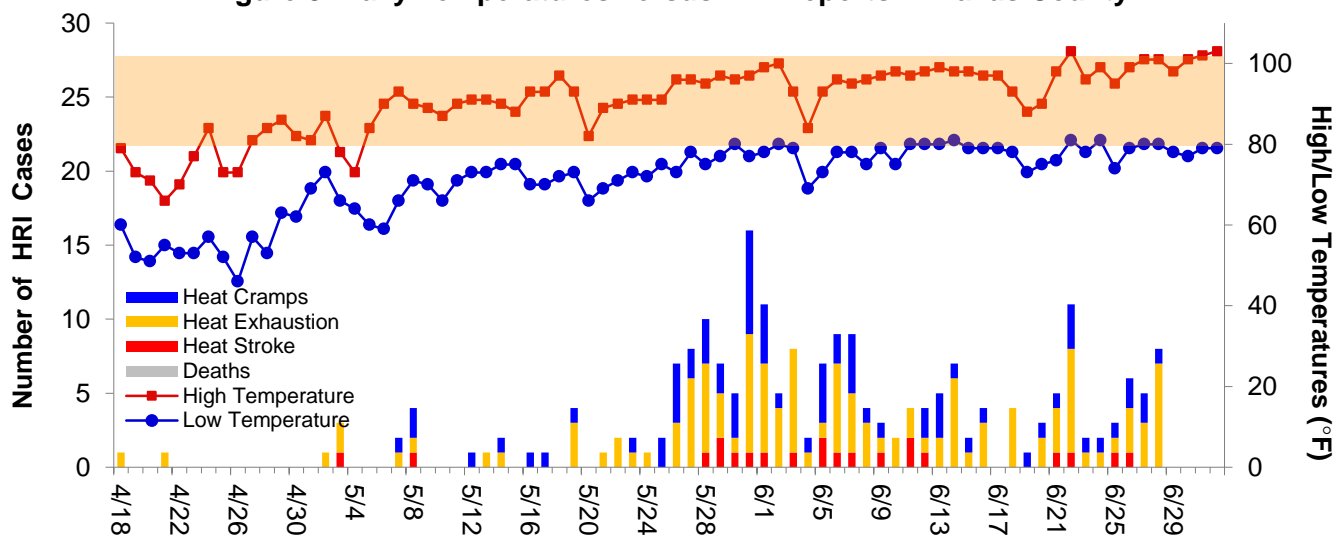


Figure 3. Daily Temperatures versus HRI Reports in Dallas County



Peak temperatures forecasted for this weekend are in the low 100s°F with overnight lows predicted to be in the upper 70s°F.

Data obtained from hospitals participating in the Electronic Surveillance System for the Early Notification of Community-based Epidemics (ESSENCE) from April 18, 2018 through the present. Depicted are the numbers of patients presenting to Emergency Departments in Dallas County hospitals with heat-related chief complaints. Data also obtained from reports received from Dallas County Medical Examiner's Office and Hospital Infection Preventionists.

\*Data for most recent week is preliminary and reflects results reported as of 12:30 p.m. June 29, 2018.

<sup>+</sup> Includes only deaths which have been confirmed by Medical Examiner's office as heat-related.