

Dallas County Health and Human Services Heat-Related Illness Surveillance Report



Week 27 ending July 7, 2018

Figure 1. Reported Heat-Related Illness (HRI) by Type

Week Ending	6/02	6/09	6/16	6/23	6/30	7/07	7/14	Total YTD
MMWR Week	22	23	24	25	26	27	28 [†]	
Heat Cramps	22	13	8	7	13	8	4	90
Heat Exhaustion	34	22	17	19	28	20	9	169
Heat Stroke	6	6	3	2	2	4	0	25
Deaths	0	0	0	0	0	0	0	0
Total HRI	62	41	28	28	43	32	13	284

Figure 2. HRI Reports by Gender and Age

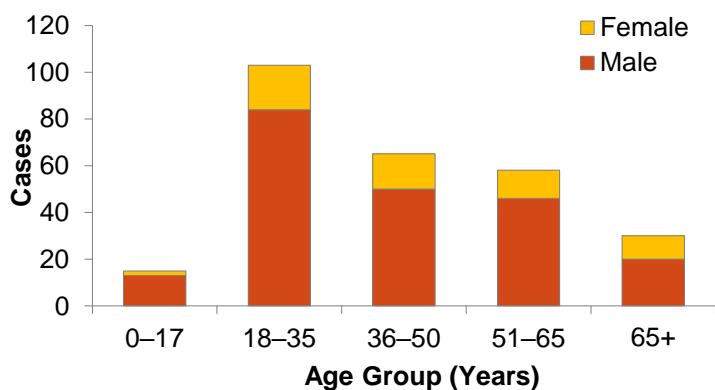


Figure 3. Total HRI by Contributing Factors

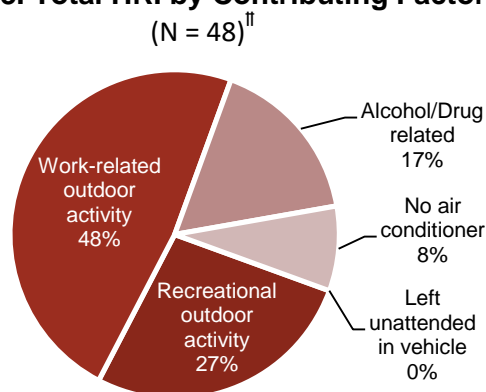
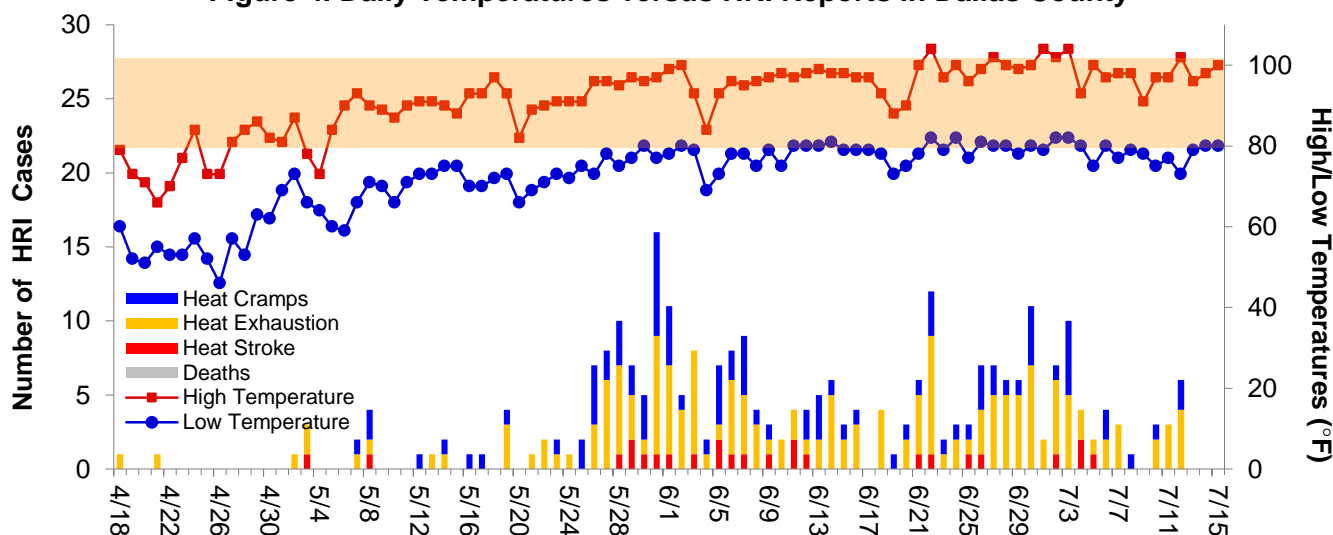


Figure 4. Daily Temperatures versus HRI Reports in Dallas County



Peak temperatures forecasted for this weekend are in the upper-90s to low 100s°F with overnight lows predicted to be in the low-80s°F.

Data obtained from hospitals participating in the Electronic Surveillance System for the Early Notification of Community-based Epidemics (ESSENCE) from April 18, 2018 through the present. Depicted are the numbers of patients presenting to Emergency Departments in Dallas County hospitals with heat-related chief complaints. Only includes deaths which have been confirmed by Medical Examiner's office as heat related.

[†] Data for most recent week is preliminary and reflects results reported as of 12:30 p.m. July 13, 2018.

^{††} Includes only HRI cases reported by hospital infection preventionist.