

Dallas County Health and Human Services Heat-Related Illness Surveillance Report



Week 32 ending August 11, 2018

Figure 1. Reported Heat-Related Illness (HRI) by Type

Week Ending	7/07	7/14	7/21	7/28	8/04	8/11	8/18	Total YTD
MMWR Week	27	28	29	30	31	32	33 [†]	
Heat Cramps	9	11	28	27	11	5	6	174
Heat Exhaustion	20	15	56	44	9	11	11	307
Heat Stroke	4	2	9	16	1	1	3	58
Deaths	1	0	0	0	1	0	0	3
Total HRI	34	28	93	87	22	17	20	542

Figure 2. HRI Reports by Gender and Age

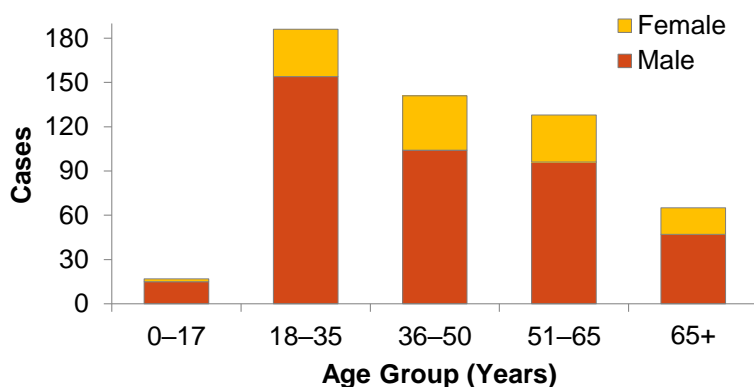


Figure 3. Total HRI by Contributing Factors

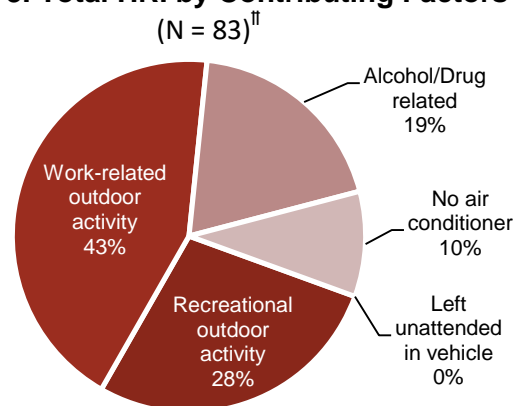
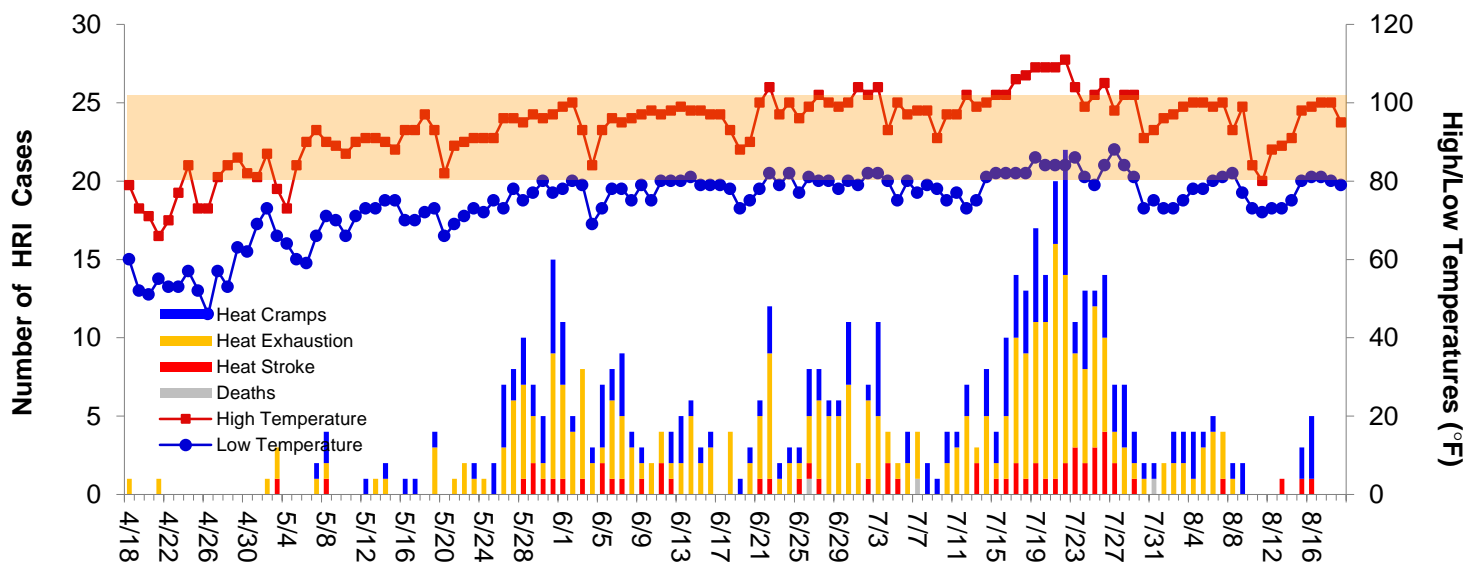


Figure 4. Daily Temperatures versus HRI Reports in Dallas County



Peak temperatures are forecasted to reach 100°F this weekend with overnight lows predicted to be in the upper-70s°F to low-80s°F.

Data obtained from hospitals participating in the Electronic Surveillance System for the Early Notification of Community-based Epidemics (ESSENCE) from April 18, 2018 through the present. Depicted are the numbers of patients presenting to Emergency Departments in Dallas County hospitals with heat-related chief complaints. Only includes deaths which have been confirmed by Medical Examiner's office as heat related.

[†]Data for most recent week is preliminary and reflects results reported as of 12:30 p.m. August 17, 2018.

[‡]Includes only HRI cases reported by hospital infection preventionist.