

Dallas County Health and Human Services Heat-Related Illness Surveillance Report



Week 30 ending July 27, 2019

Figure 1. Reported Heat-Related Illness (HRI) by Type

Week Ending	6/1	6/8	6/15	6/22	6/29	7/6	7/13	7/20	7/27	8/3*	Total YTD
MMWR Week	22	23	24	25	26	27	28	29	30	31	
Heat Cramps	2	6	5	7	13	5	17	9	7	8	83
Heat Exhaustion	3	10	2	11	6	12	25	22	9	8	122
Heat Stroke	1	2	1	4	3	4	2	1	2	6	29
Deaths ⁺	0	0	0	0	0	0	0	0	0	0	0
Total HRI	6	18	8	22	22	21	44	32	18	22	234

Figure 2. HRI Reports by Gender and Age

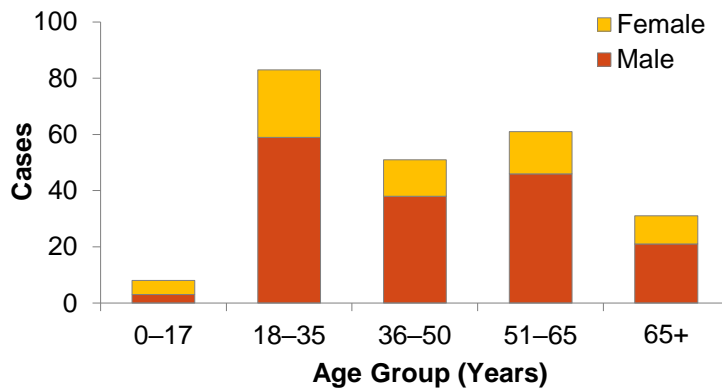
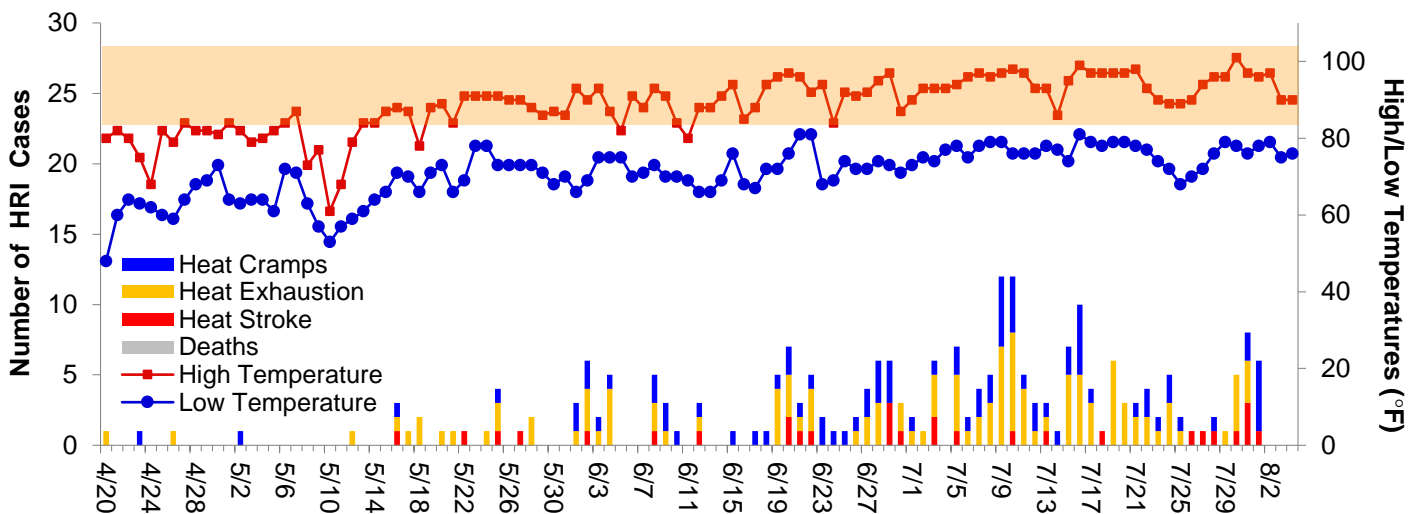


Figure 3. Daily Temperatures versus HRI Reports in Dallas County



Peak temperatures forecasted for this weekend are in the low 90s°F with overnight lows predicted to be in the mid 70s°F.

Data obtained from hospitals participating in the Electronic Surveillance System for the Early Notification of Community-based Epidemics (ESSENCE) from April 7, 2019 through the present. Depicted are the numbers of patients presenting to Emergency Departments in Dallas County hospitals with heat-related chief complaints. Data also obtained from reports received from Dallas County Medical Examiner's Office.

*Data for most recent week is preliminary and reflects results reported as of 12:30 p.m. August 2, 2019.

⁺Includes only deaths which have been confirmed by Medical Examiner's office as heat-related.