

# Dallas County Health and Human Services Heat-Related Illness Surveillance Report



Week 34 ending August 24, 2019

Figure 1. Reported Heat-Related Illness (HRI) by Type

| Week Ending         | 6/29      | 7/6       | 7/13      | 7/20      | 7/27      | 8/3       | 8/10      | 8/17      | 8/24      | 8/25*     | Total YTD  |
|---------------------|-----------|-----------|-----------|-----------|-----------|-----------|-----------|-----------|-----------|-----------|------------|
| MMWR Week           | 26        | 27        | 28        | 29        | 30        | 31        | 32        | 33        | 34        | 35        |            |
| Heat Cramps         | 13        | 5         | 17        | 9         | 7         | 10        | 30        | 28        | 22        | 10        | 175        |
| Heat Exhaustion     | 6         | 12        | 25        | 22        | 9         | 16        | 21        | 20        | 20        | 3         | 194        |
| Heat Stroke         | 3         | 4         | 2         | 1         | 2         | 6         | 8         | 11        | 4         | 2         | 54         |
| Deaths <sup>+</sup> | 0         | 0         | 0         | 0         | 0         | 0         | 0         | 0         | 0         | 0         | 0          |
| <b>Total HRI</b>    | <b>22</b> | <b>21</b> | <b>44</b> | <b>32</b> | <b>18</b> | <b>32</b> | <b>59</b> | <b>59</b> | <b>46</b> | <b>15</b> | <b>423</b> |

Figure 2. HRI Reports by Gender and Age

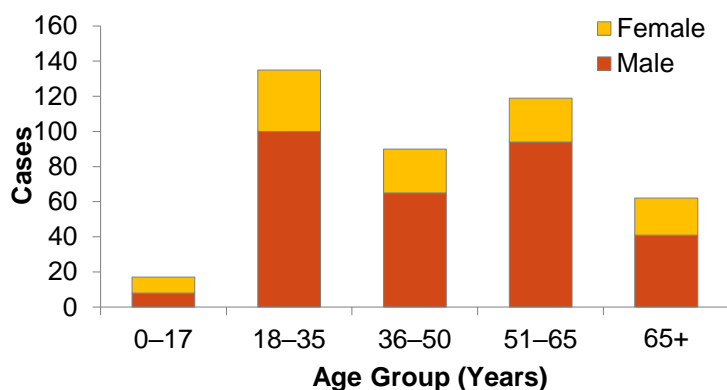
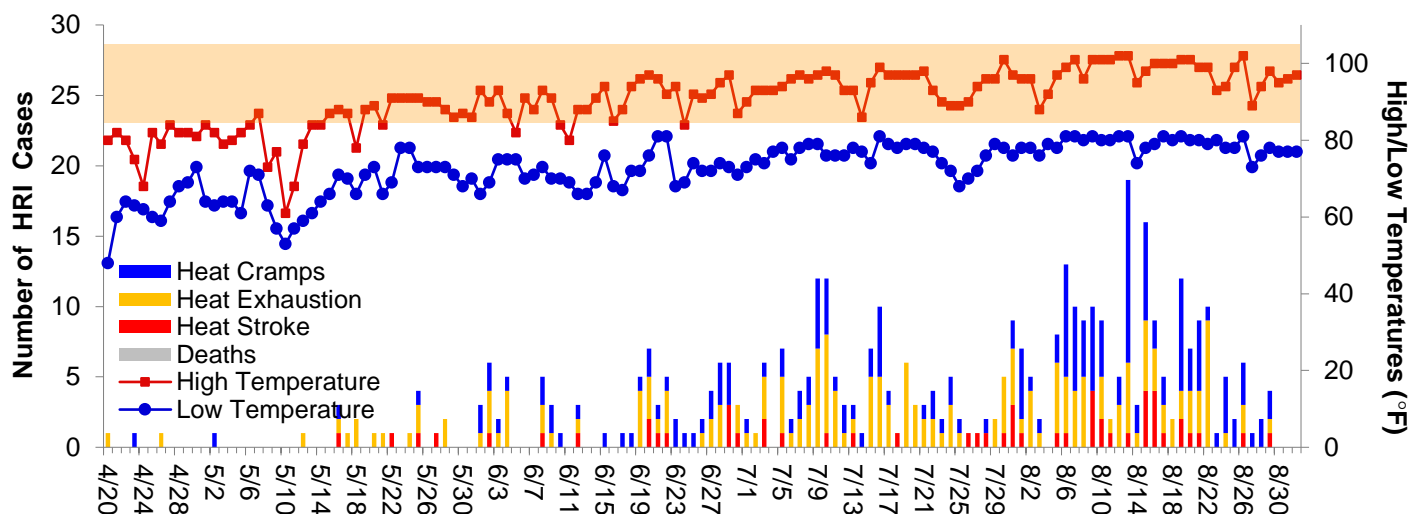


Figure 3. Daily Temperatures versus HRI Reports in Dallas County



Peak temperatures forecasted for this weekend are in the mid to high 90s°F with overnight lows predicted to be in the high 70s°F.

Data obtained from hospitals participating in the Electronic Surveillance System for the Early Notification of Community-based Epidemics (ESSENCE) from April 7, 2019 through the present. Depicted are the numbers of patients presenting to Emergency Departments in Dallas County hospitals with heat-related chief complaints. Data also obtained from reports received from Dallas County Medical Examiner's Office.

\*Data for most recent week is preliminary and reflects results reported as of 12:30 p.m. August 30, 2019.

<sup>+</sup>Includes only deaths which have been confirmed by Medical Examiner's office as heat-related.