

Dallas County Health and Human Services Heat-Related Illness Surveillance Report



Week 36 ending September 7, 2019

Figure 1. Reported Heat-Related Illness (HRI) by Type

Week Ending	7/13	7/20	7/27	8/3	8/10	8/17	8/24	8/31	9/7	9/14	Total
MMWR Week	28	29	30	31	32	33	34	35	36	37*	YTD
Heat Cramps	17	9	7	10	30	28	22	10	9	3	187
Heat Exhaustion	25	22	9	16	21	20	23	3	9	3	209
Heat Stroke	2	1	2	6	8	11	4	3	4	1	60
Deaths ⁺	0	0	0	0	0	0	0	0	0	0	0
Total HRI	44	32	18	32	59	59	49	16	22	7	456

Figure 2. HRI Reports by Gender and Age

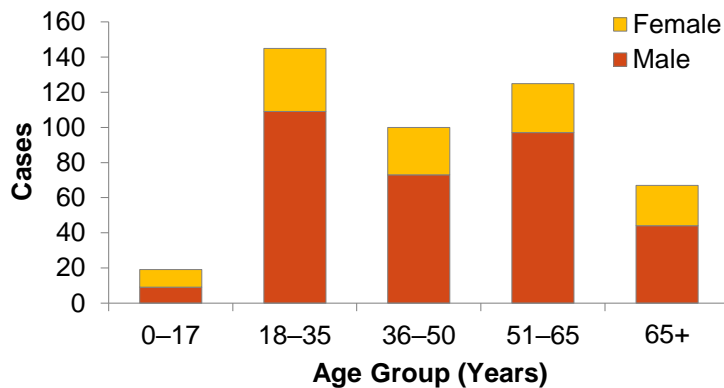
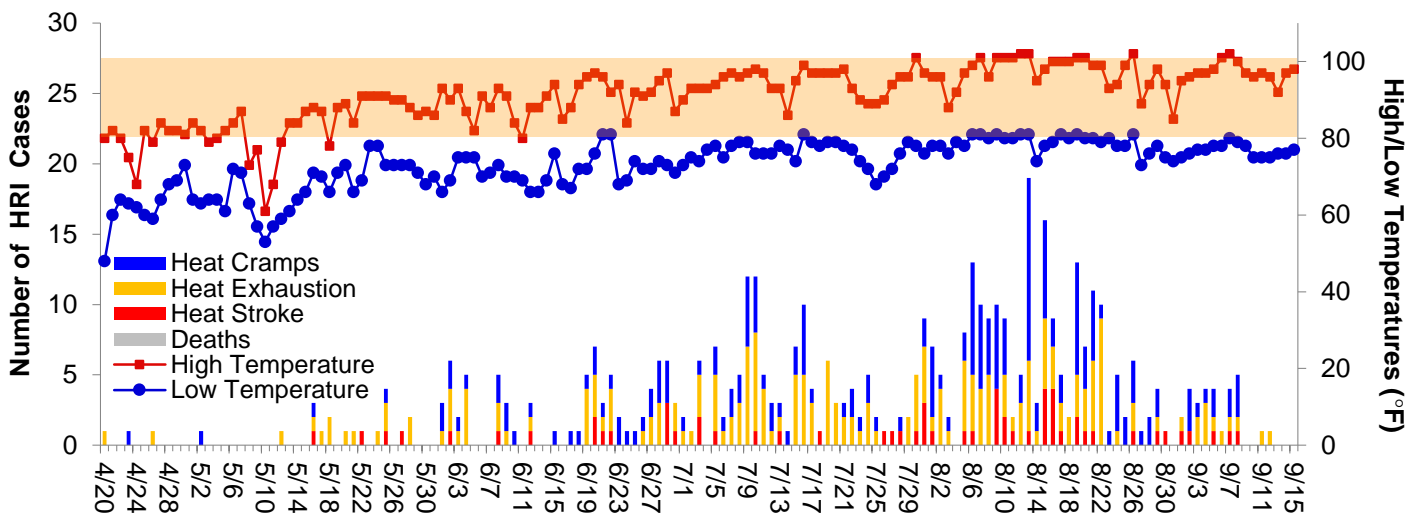


Figure 3. Daily Temperatures versus HRI Reports in Dallas County



Peak temperatures forecasted for this weekend are in the high 90s°F with overnight lows predicted to be in the mid 70s°F.

Data obtained from hospitals participating in the Electronic Surveillance System for the Early Notification of Community-based Epidemics (ESSENCE) from April 7, 2019 through the present. Depicted are the numbers of patients presenting to Emergency Departments in Dallas County hospitals with heat-related chief complaints. Data also obtained from reports received from Dallas County Medical Examiner's Office.

*Data for most recent week is preliminary and reflects results reported as of 12:30 p.m. September 13, 2019.

⁺Includes only deaths which have been confirmed by Medical Examiner's office as heat-related.