



2014 Profile of Varicella in Dallas County

Dallas County Health and Human Services

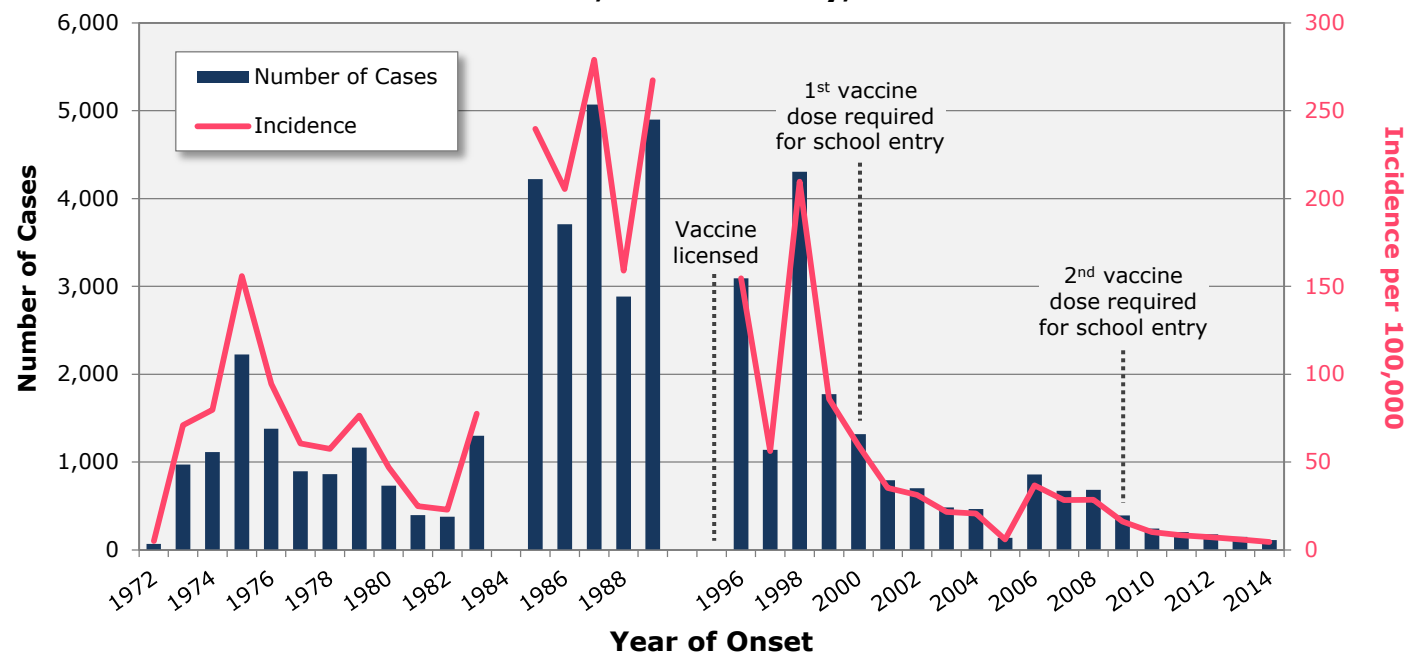
Demographic Characteristics of Varicella Cases, 2014

	n (%)	Incidence per 100,000
Total	110 (100.0)	4.5
Sex		
Male	50 (45.5)	4.1
Female	60 (54.5)	4.8
Race/Ethnicity		
Hispanic	46 (41.8)	4.8
White	24 (21.8)	3.1
Black	17 (15.5)	3.1
Asian	15 (13.6)	10.9
Other	2 (1.8)	N/A
Unknown	6 (5.5)	N/A
Age Group (years)		
<1	13 (11.7)	31.4
1-4	33 (29.7)	20.8
5-9	19 (17.1)	10.1
10-14	7 (7.2)	4.4
15-19	4 (3.6)	2.4
20-29	15 (13.5)	4.0
30-39	12 (10.8)	3.1
40-49	5 (4.5)	1.5
50-59	2 (1.8)	0.7
≥60	0 (0.0)	0.0

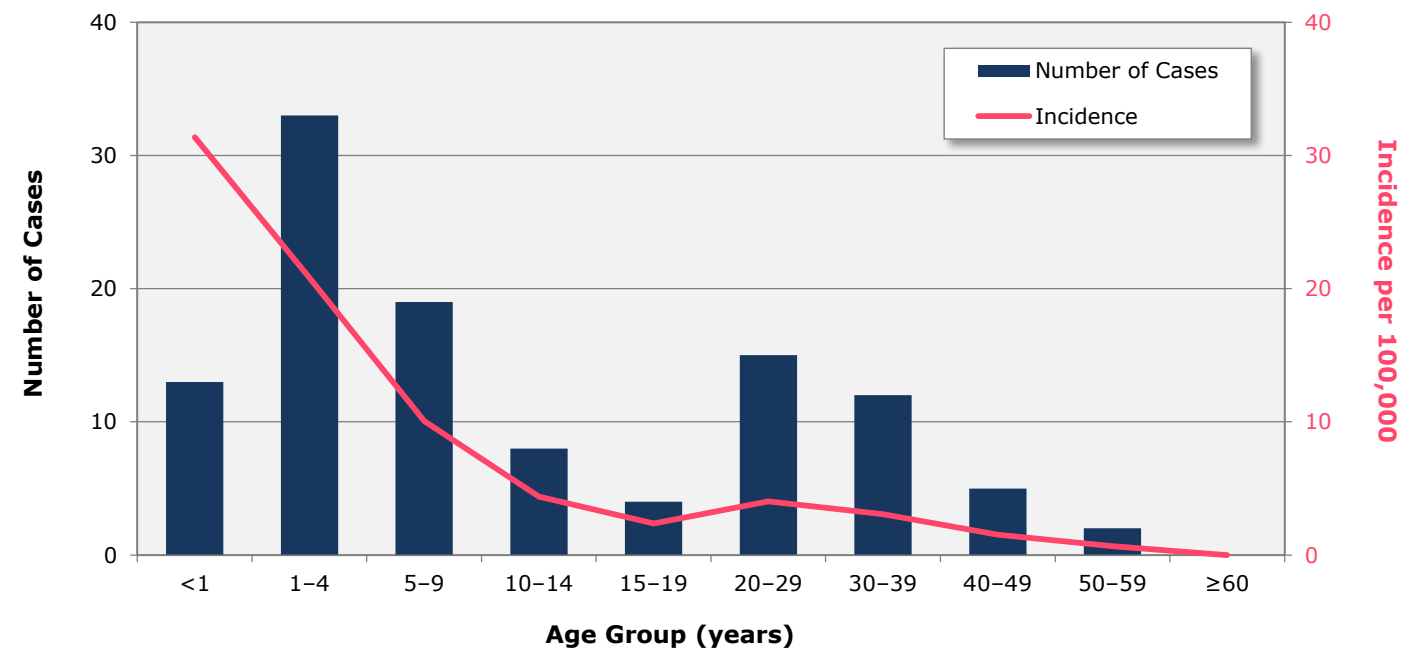
N/A = Not applicable

- Chickenpox (varicella) is a highly contagious disease caused by the varicella zoster virus (VZV). Symptoms classically include fever, and an extensive itchy rash with fluid-filled blisters. Serious complications from varicella include pneumonia, encephalitis, bacterial infection of the skin and soft tissues, sepsis, and toxic shock syndrome.
- Persons at risk for more severe symptoms include infants, adults, pregnant women, and immunocompromised persons.
- Two doses of chickenpox vaccine are recommended for children and adults. Persons vaccinated against chickenpox can still get disease; however, symptoms are usually milder.

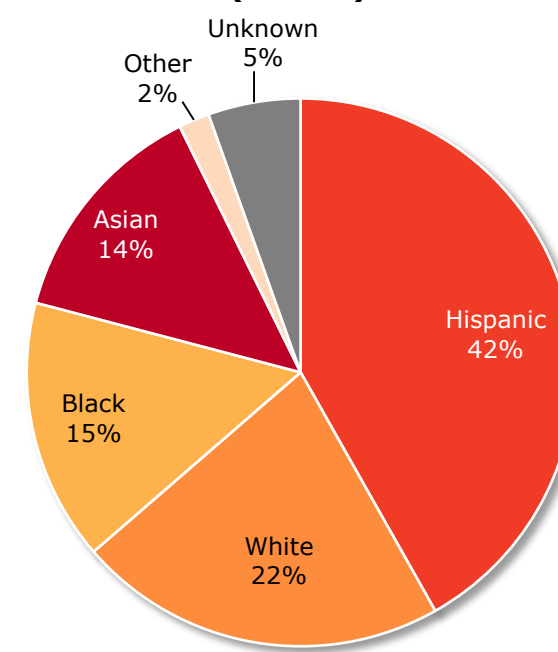
Varicella Cases and Incidence by Year of Onset, Dallas County, 1972-2014



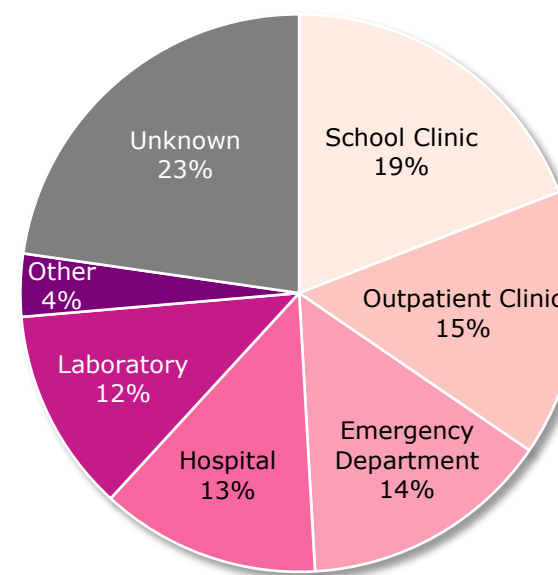
Varicella Cases and Incidence by Age Group (years), 2014



Cases of Varicella by Race/Ethnicity, 2014 (n=110)



Cases of Varicella by Reporting Source, 2014 (n=110)



Note: Reliable archival data currently unavailable for 1984 and 1990-1995. Incidence calculated using projected population data for 2014.

Data Sources: Dallas County Department of Health and Human Services, Epidemiology Division; National Electronic Disease Surveillance System (NEDSS); Texas Department of State Health Services, Center for Health Statistics, available at <http://www.dshs.state.tx.us/chs/popdat/detailX.shtm>; United States Census Bureau, Population and Housing Unit Estimates, available at <http://www.census.gov/popest/>.