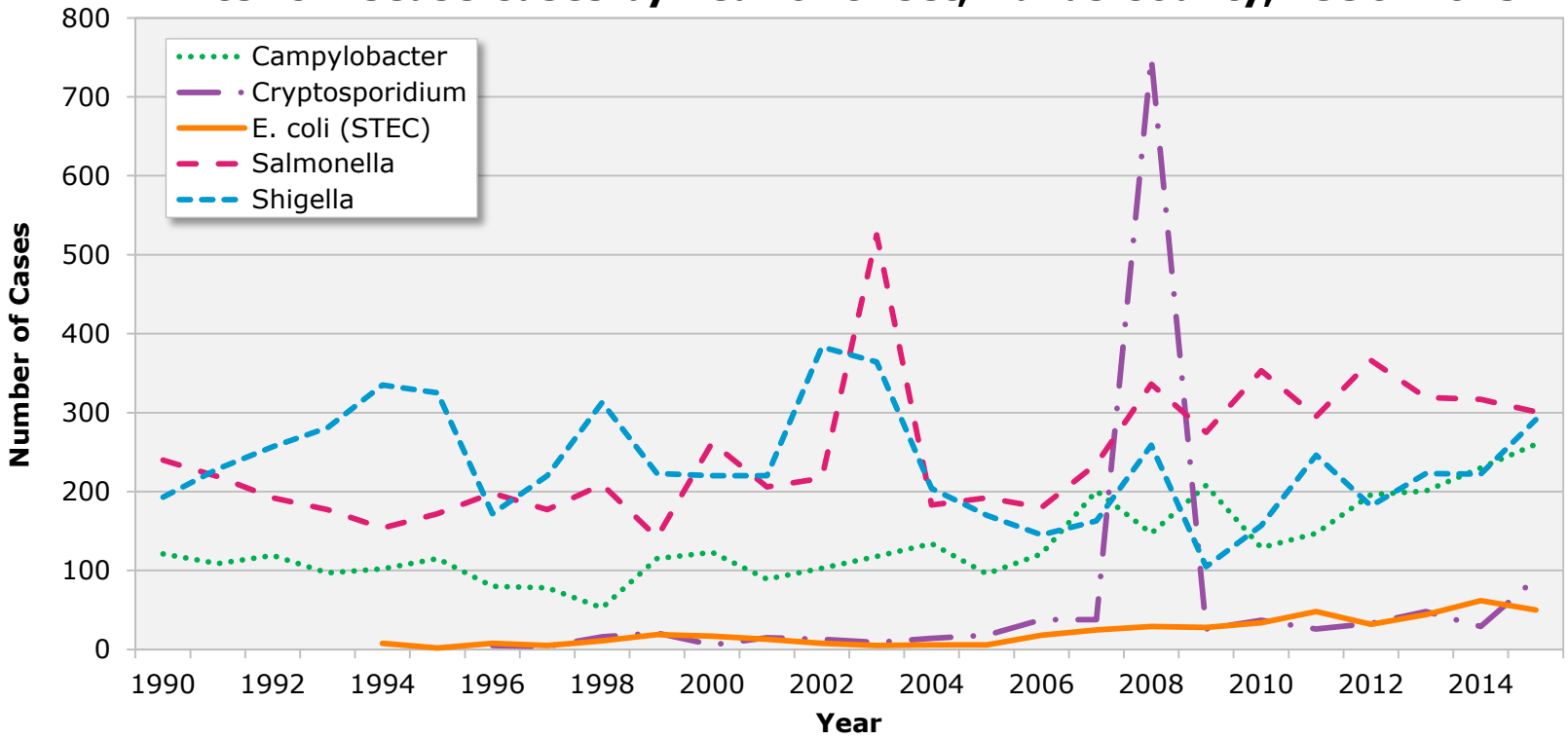




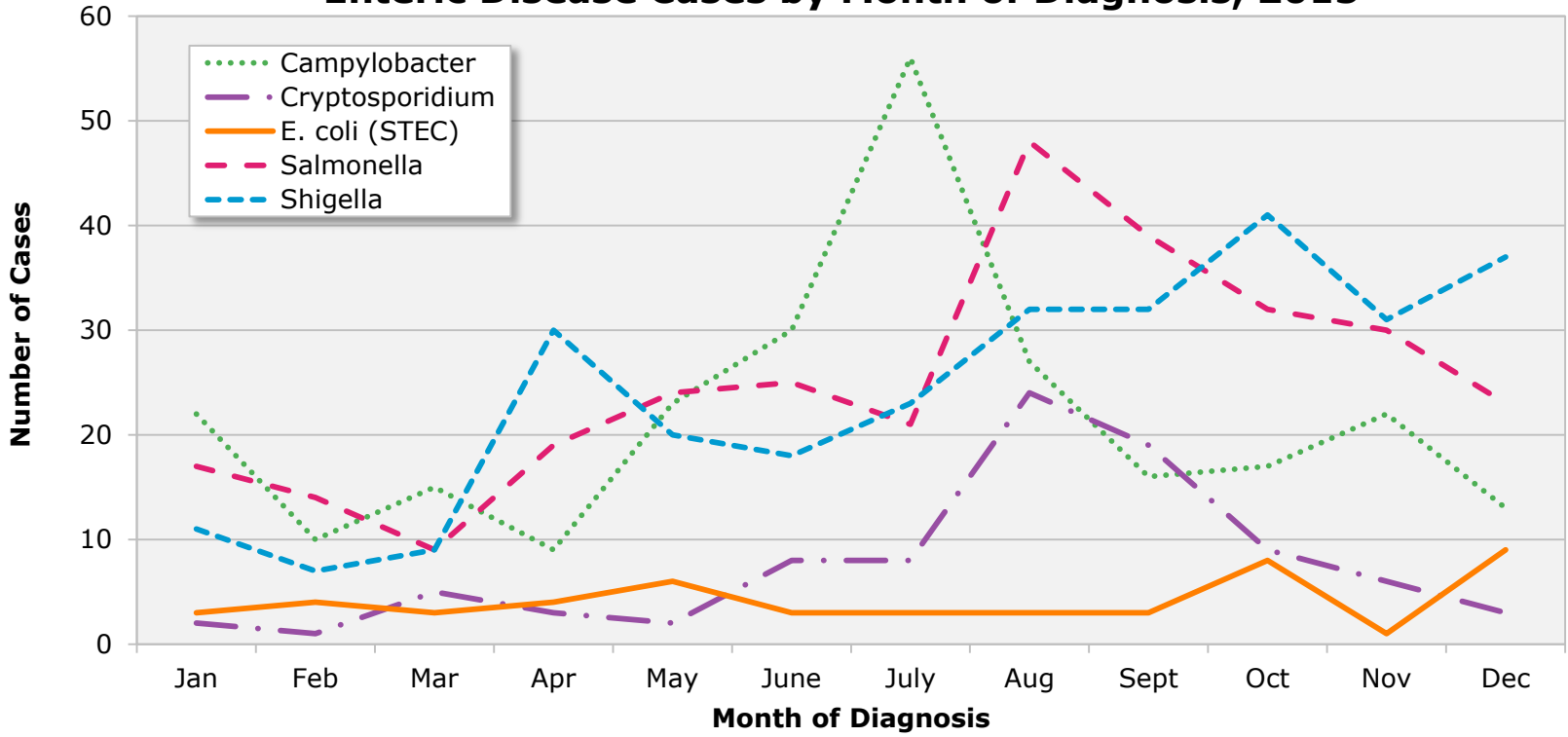
2015 Summary of Enteric Diseases in Dallas County

Dallas County Health and Human Services

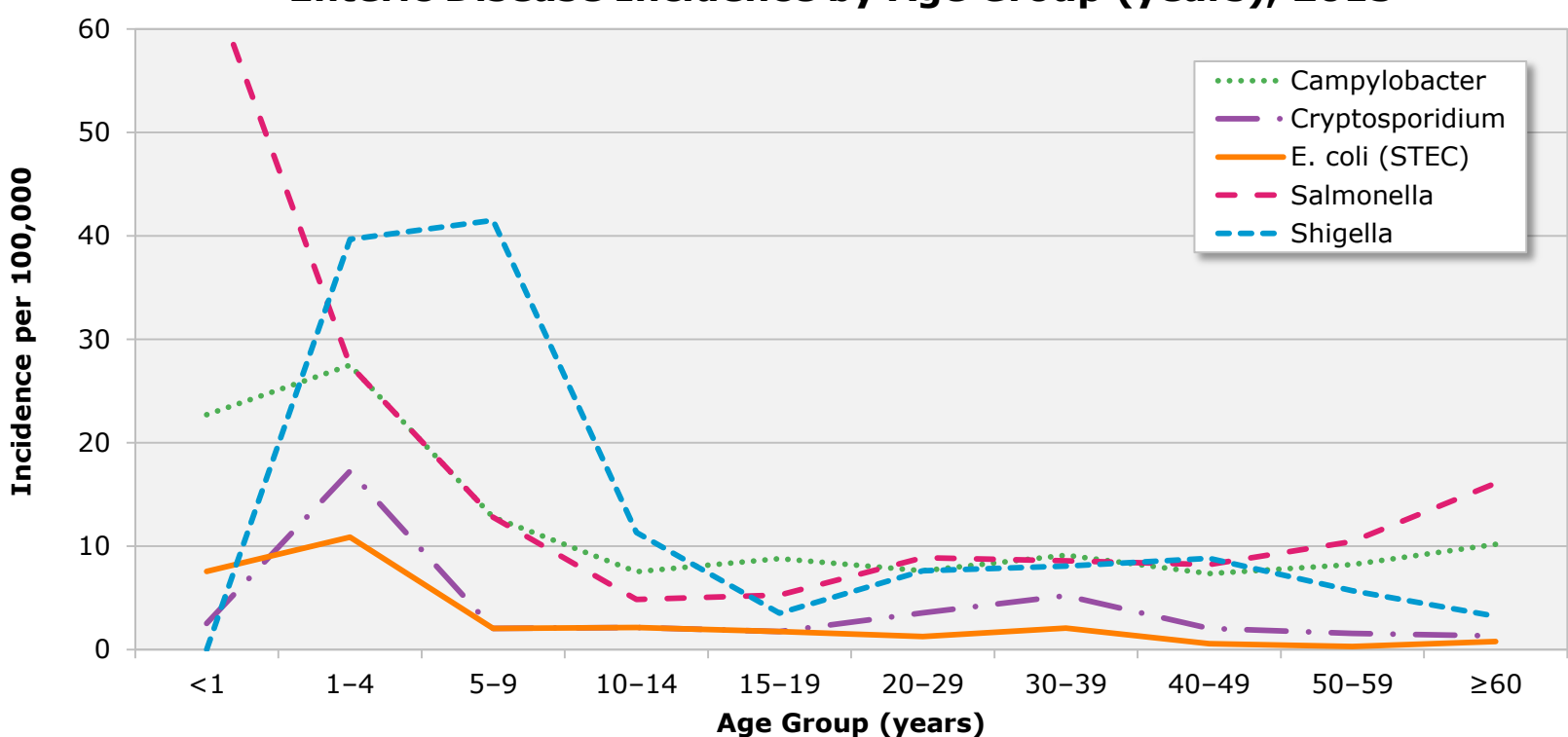
Enteric Disease Cases by Year of Onset, Dallas County, 1990–2015



Enteric Disease Cases by Month of Diagnosis, 2015



Enteric Disease Incidence by Age Group (years), 2015



E. coli reportable as O157:H7 from 1994–1999, enterohemorrhagic *E. coli* (EHEC) from 2000–2006, and STEC from 2007 forward.
 Note: Incidence calculated using projected population data for 2015. Data Sources: Dallas County Department of Health and Human Services, Epidemiology Division; National Electronic Disease Surveillance System (NEDSS); Population data obtained through the Centers for Disease Control and Prevention: WONDER Bridged-Race Population Estimates 1990–2015.