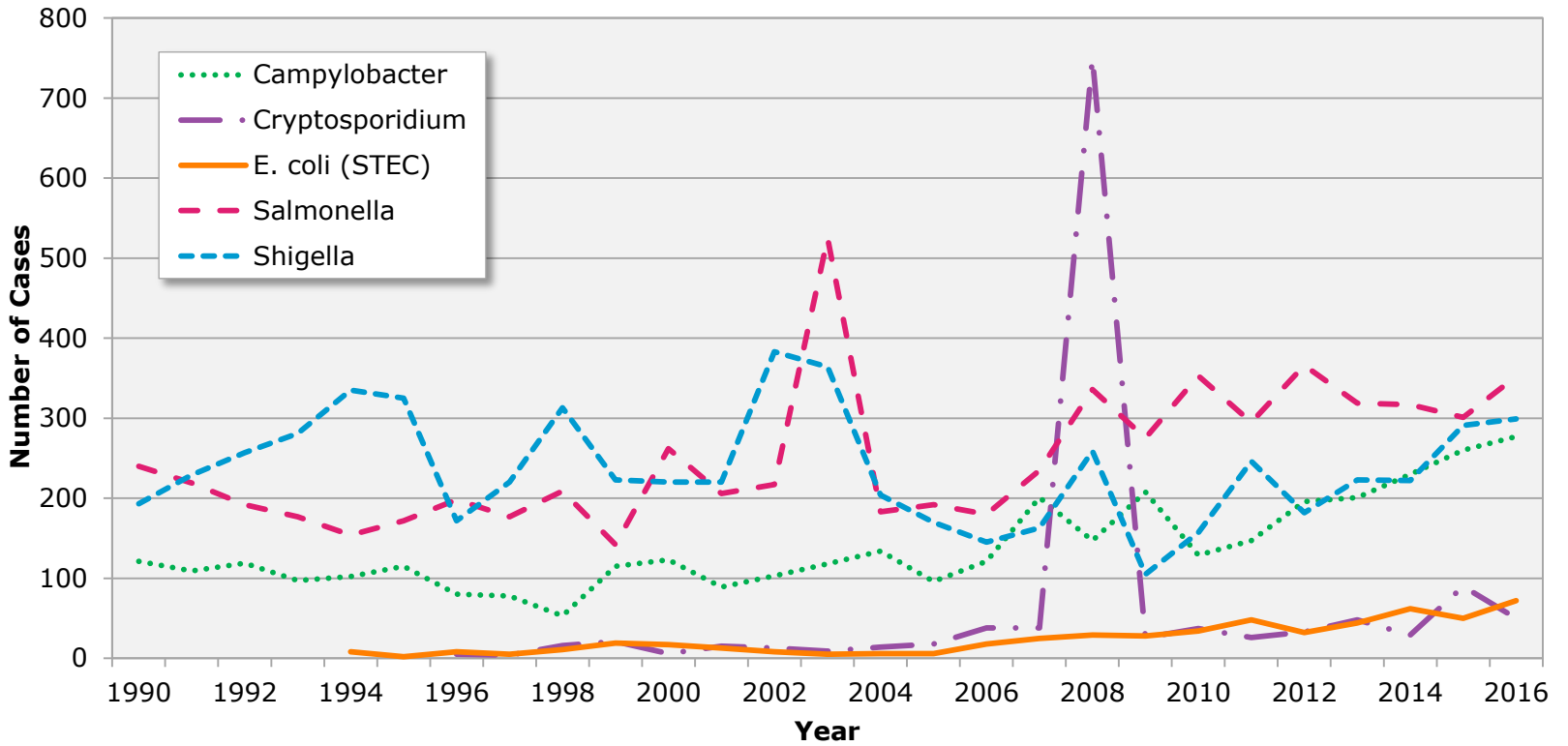




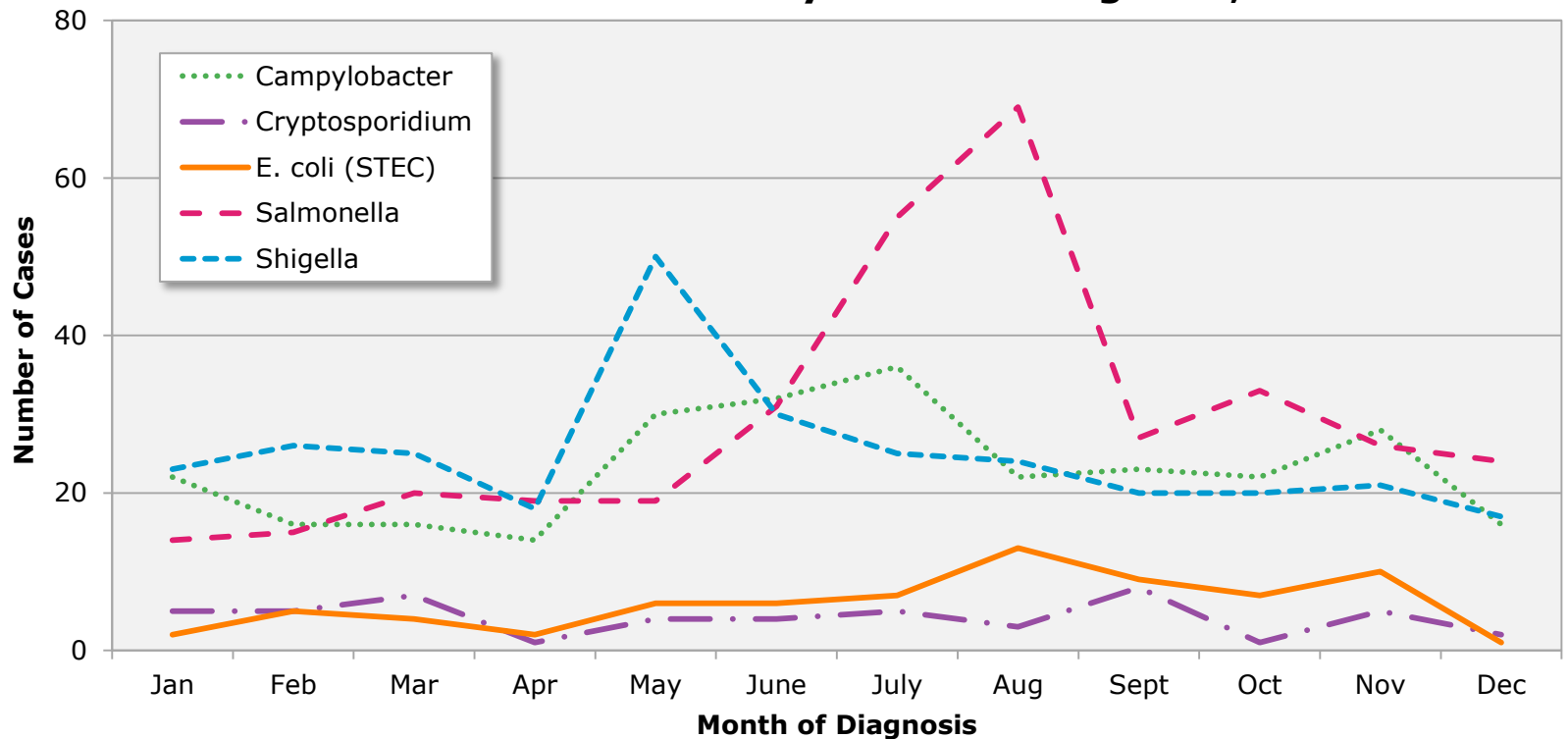
# 2016 Summary of Enteric Diseases in Dallas County

## Dallas County Health and Human Services

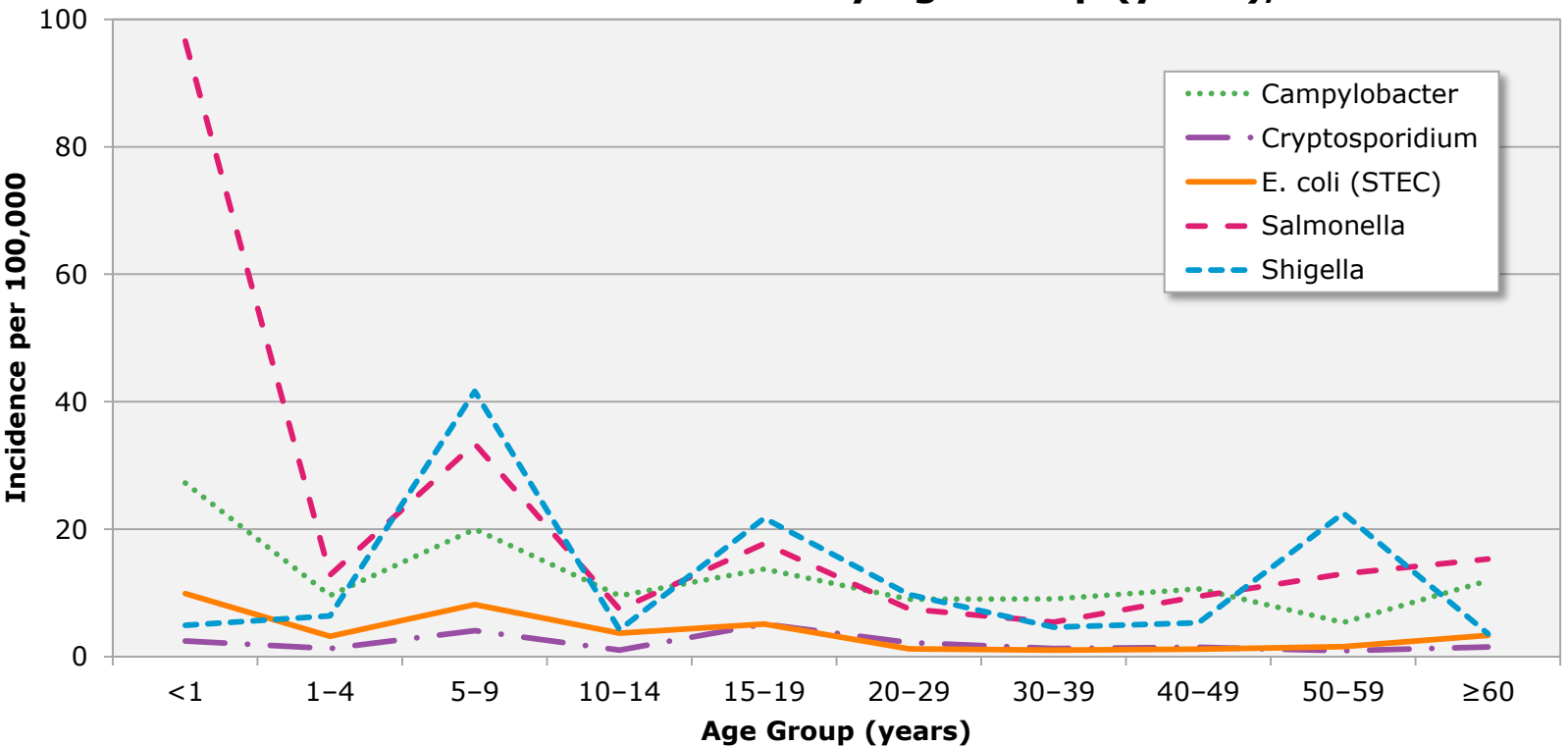
### Enteric Disease Cases by Year of Onset, Dallas County, 1990–2016



### Enteric Disease Cases by Month of Diagnosis, 2016



### Enteric Disease Incidence by Age Group (years), 2016



*E. coli* reportable as O157:H7 from 1994–1999, enterohemorrhagic *E. coli* (EHEC) from 2000–2006, and STEC from 2007 forward.  
 Note: Incidence calculated using projected population data for 2016. Data Sources: Dallas County Department of Health and Human Services, Epidemiology Division; National Electronic Disease Surveillance System (NEDSS); Population data obtained through the Centers for Disease Control and Prevention: WONDER Bridged-Race Population Estimates 1990–2016.