



2018 Profile of Varicella in Dallas County

Dallas County Health and Human Services

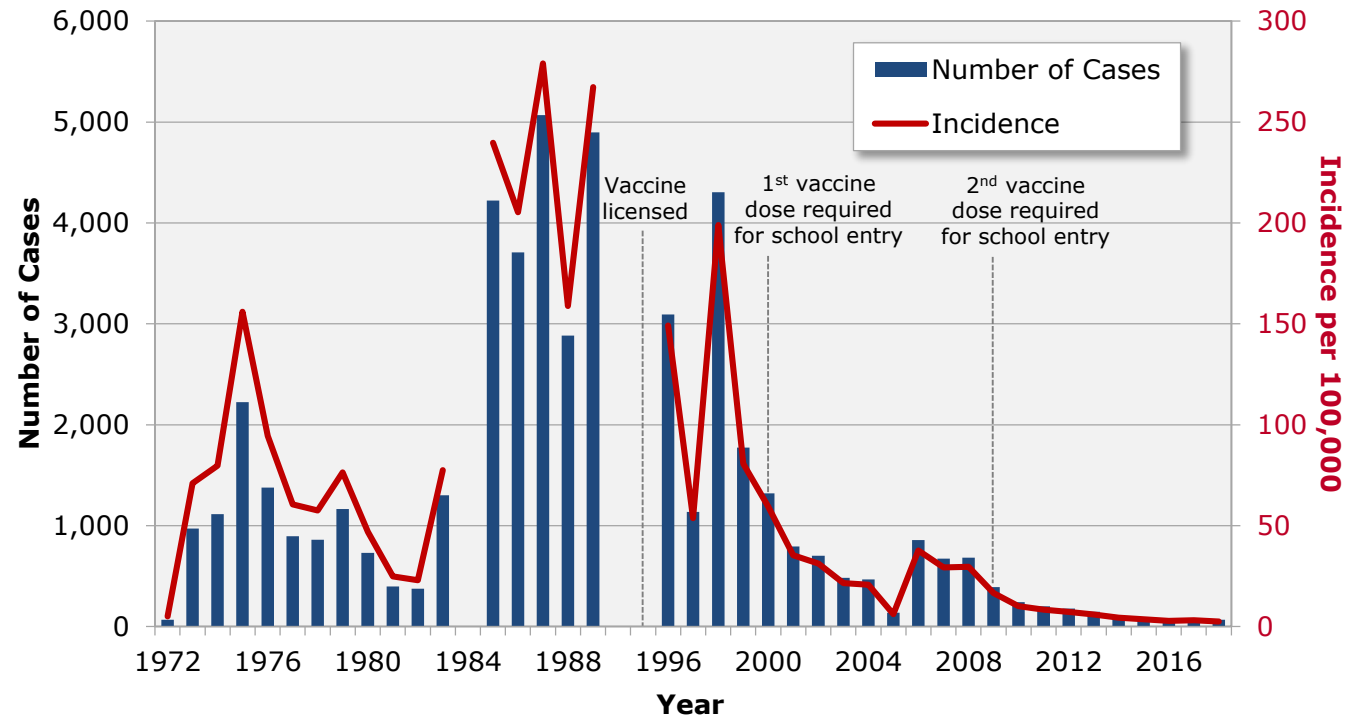
Summary of Varicella Cases, 2018

	n (%)	Incidence per 100,000
Total	67 (100.0)	2.5
Sex		
Male	37 (56.1)	2.8
Female	29 (43.9)	2.2
Race/Ethnicity		
Hispanic	23 (34.3)	2.2
White	16 (23.9)	2.1
Black	7 (10.4)	1.2
Asian	10 (14.9)	5.6
Unknown	11 (16.4)	N/A
Age Group (years)		
<1	5 (7.5)	12.5
1-4	18 (26.9)	11.5
5-9	14 (20.9)	7.4
10-14	5 (7.5)	2.6
15-19	0	0
20-29	8 (11.9)	1.9
30-39	9 (13.4)	2.3
40-49	6 (9.0)	1.8
50-59	2 (3.0)	0.6
≥60	0	0

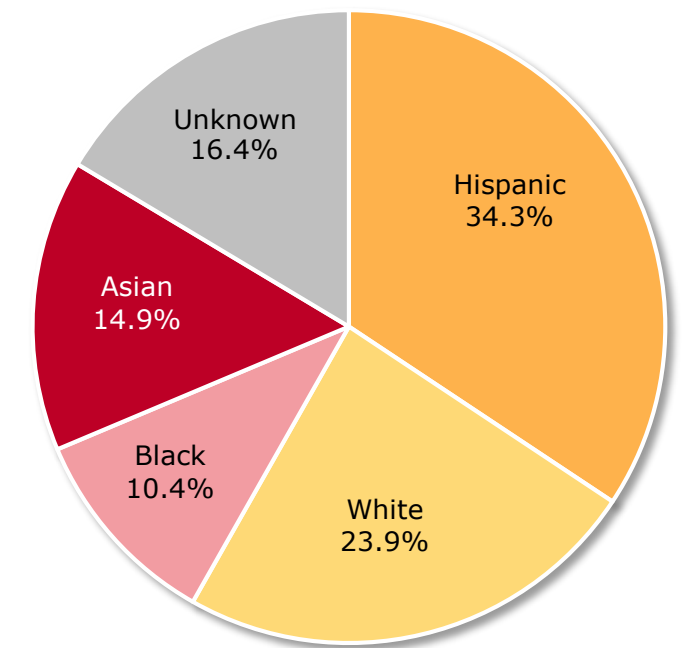
N/A = Not applicable

- Chickenpox (varicella) is a highly contagious disease caused by the varicella zoster virus (VZV). Symptoms classically include fever, and an extensive itchy rash with fluid-filled blisters. Serious complications from varicella include pneumonia, encephalitis, bacterial infection of the skin and soft tissues, sepsis, and toxic shock syndrome.
- Persons at risk for more severe symptoms include infants, adults, pregnant women, and immunocompromised persons.
- Two doses of chickenpox vaccine are recommended for children and adults. Persons vaccinated against chickenpox can still get disease; however, symptoms are usually milder.

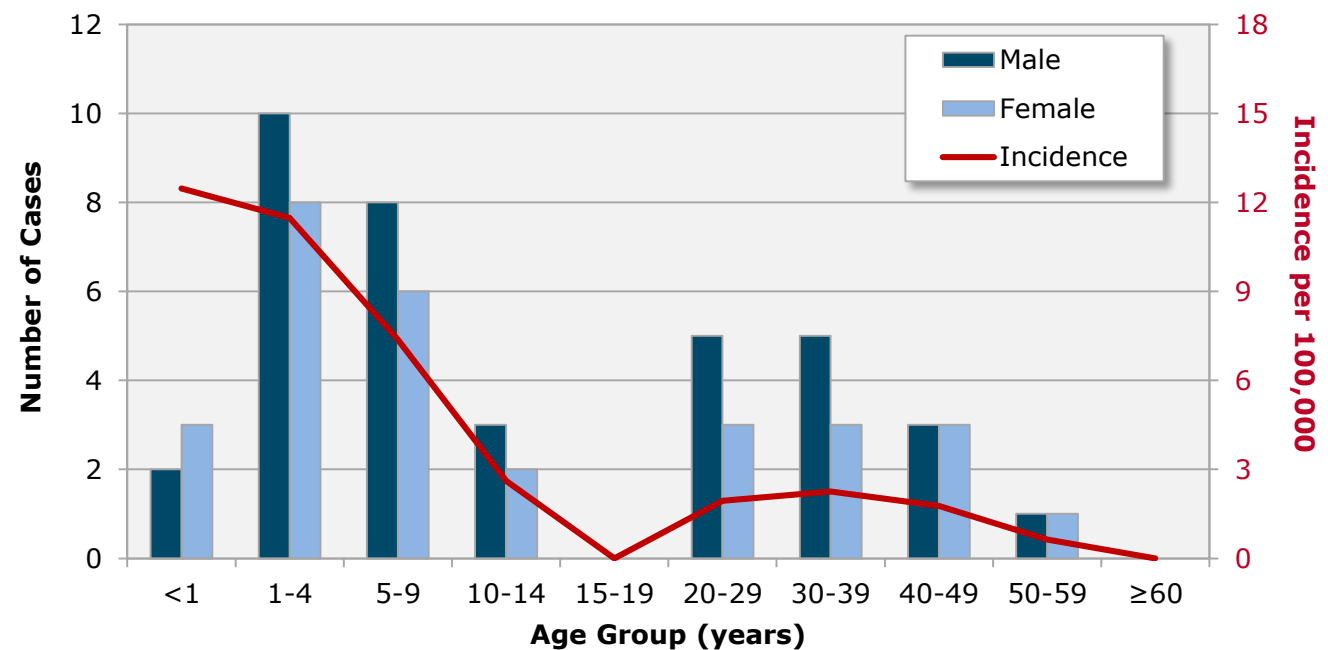
Varicella Cases and Incidence by Year of Onset, Dallas County, 1972-2018



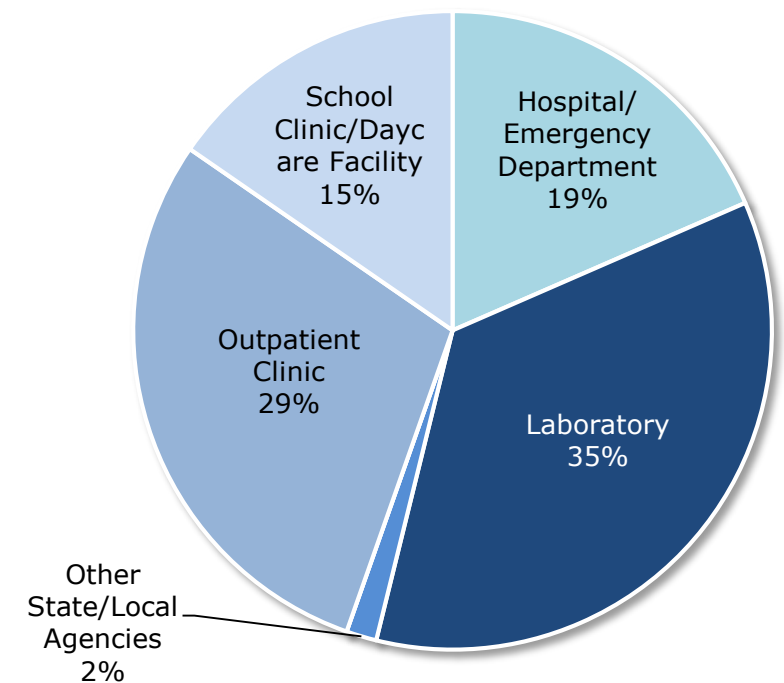
Cases of Varicella by Race/Ethnicity, 2018, (n=67)



Varicella Cases and Incidence by Age Group (years), 2018



Cases of Varicella by Reporting Source, 2018, (n=65)



Note: Incidence calculated using projected population data for 2018
 Data Sources: Dallas County Department of Health and Human Services, Epidemiology Division; National Electronic Disease Surveillance System (NEDSS); Population data obtained through the Centers for Disease Control and Prevention: WONDER Bridged-Race Population Estimates 1990-2018.