



Dallas County Health and Human Services 2016–2017 Influenza Surveillance Report

Week 10 ending March 11, 2017

Epidemiologic Summary

- Influenza activity was slightly increasing in Dallas County with 19.3% of tests returning positive during week 10. Nationally, 18.3% of specimens reported to CDC were positive for influenza.
- Daily numbers of emergency department visits for influenza-like illness in Dallas County were slightly above baseline levels and 67 influenza-associated hospitalizations were reported during week 10.
- No influenza-associated deaths were reported in week 10. No influenza-associated pediatric deaths have been reported during the 2016-2017 season in Dallas County.
- RSV activity was decreasing with 7.3% of tests from area surveillance sites testing positive.

Table 1. Summary of Influenza Surveillance from Dallas County Hospitals and Hospital Laboratories

Week Ending	2/4	2/11	2/18	2/25	3/4	3/11	9/11/16 – Present
CDC Week	5	6	7	8	9*	10*	
Total Influenza PCR Tests	1,009	1,229	1,163	993	903	840	16,278
Number of positive PCR tests	251	357	274	212	156	138	2,102
Percent of positive PCR tests	24.9	29.1	23.6	21.4	17.3	16.4	
Total Rapid Influenza Diagnostic Tests	2,111	2,402	2,133	1,689	1,460	1,025	20,814
Number of positive RIDTs	629	606	500	353	293	241	3,615
Percent of positive RIDTs	29.8	25.2	23.4	20.9	20.1	23.5	
Total Influenza Tests Performed	3,183	3,717	3,435	2,783	2,478	1,972	39,546
Total positive influenza tests ¹	881	963	779	568	453	380	5,738
Percent positive influenza tests	27.7	25.9	22.7	20.4	18.3	19.3	
Positive influenza A tests ²	816	886	690	464	339	237	4,692
Positive influenza B tests	65	77	89	104	114	143	759
Non-differentiated influenza tests ³	0	0	0	0	0	0	2

¹ Includes positive rapid antigen, PCR, DFA, or culture results

² Further subtyping is performed only by select hospital laboratories for specimens referred to DCHHS by institutions for PCR-testing

³ Non-differentiated refers to rapid test results which did not differentiate between influenza A and B

Table 2. Summary of Influenza Hospitalizations and Deaths from Dallas County Hospitals, Vital Statistics and Medical Examiner's Office

Week Ending	2/4	2/11	2/18	2/25	3/4	3/11	9/11/16– Present
CDC Week	5	6	7	8	9*	10*	
Influenza hospitalizations ⁴	112	179	140	88	68	67	1,033
Confirmed pediatric deaths ⁵	0	0	0	0	0	0	0
Confirmed adult deaths ⁶	1	2	2	4	0	0	13
Possible influenza-associated deaths ⁷	0	0	0	0	0	0	1

⁴ Reflects all influenza-associated hospitalizations reported from hospitals located within Dallas County by week of any positive influenza tests

⁵ Confirmed influenza-associated deaths of Dallas County residents <18 years of age

⁶ Confirmed influenza-associated deaths as defined by a positive laboratory test, compatible symptoms, and clear progression from illness to death, or determination by the County Medical Examiner's office (ME) of no alternate cause of death

⁷ Possible influenza-associated deaths are defined as cases with laboratory-confirmed influenza, but pending final autopsy results for determination of primary cause of death

Data source(s): 15 Hospitals in Dallas County

Table 3. Confirmed Influenza-associated Pediatric and Adult Deaths, Dallas County: 2011–2017 Seasons

	2011–2012	2012–2013	2013–2014	2014–2015	2015–2016	2016–2017
Pediatric	1	3	3	0	1	0
Adult	0	6	55	19	14	13

Data source(s): Reports of confirmed influenza-associated deaths, as defined in Table 2.

*Indicates preliminary results which are subject to change with late-arriving data from surveillance sites designated for DCHHS' seasonal influenza program

Figure 1. Influenza Positive Tests Reported to DCHHS by Hospital Laboratories: 2016 - 2017 Seasons

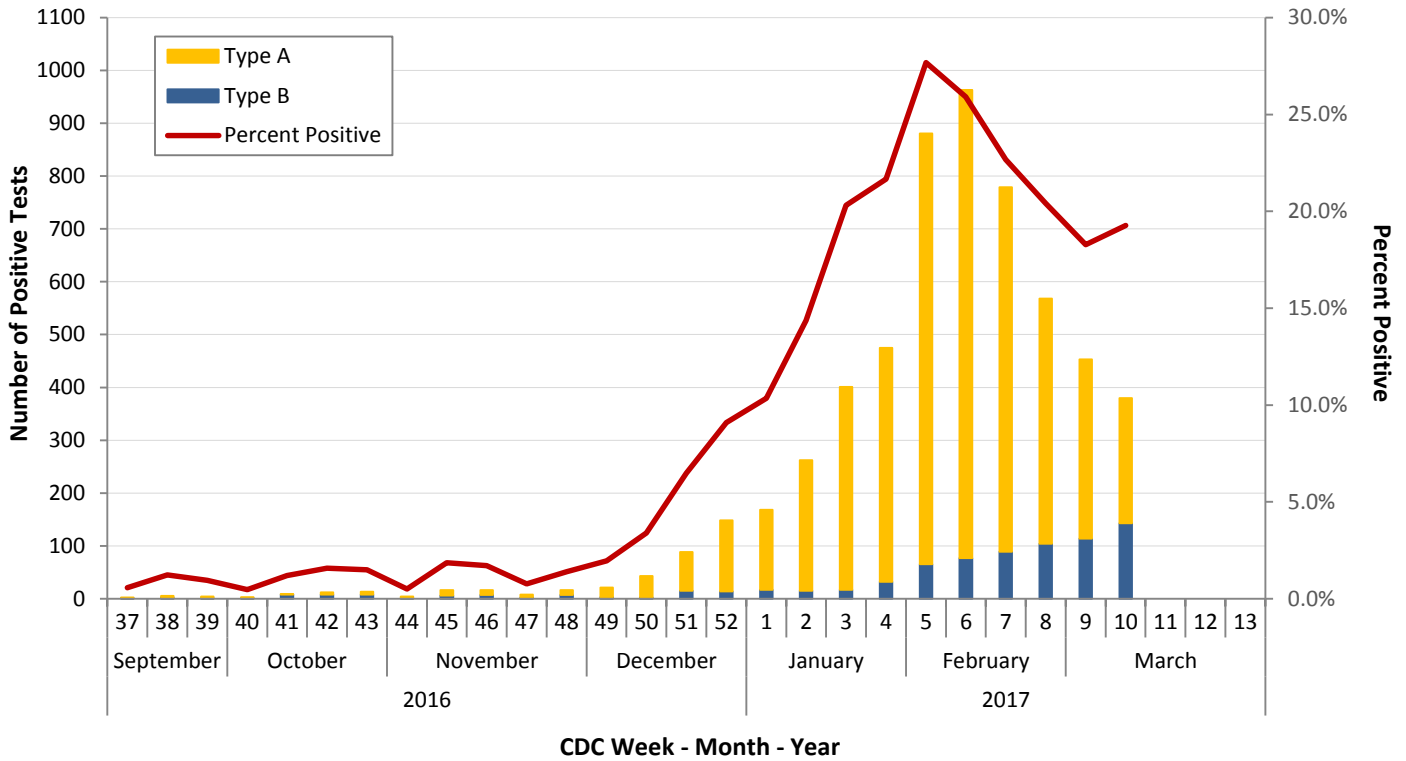
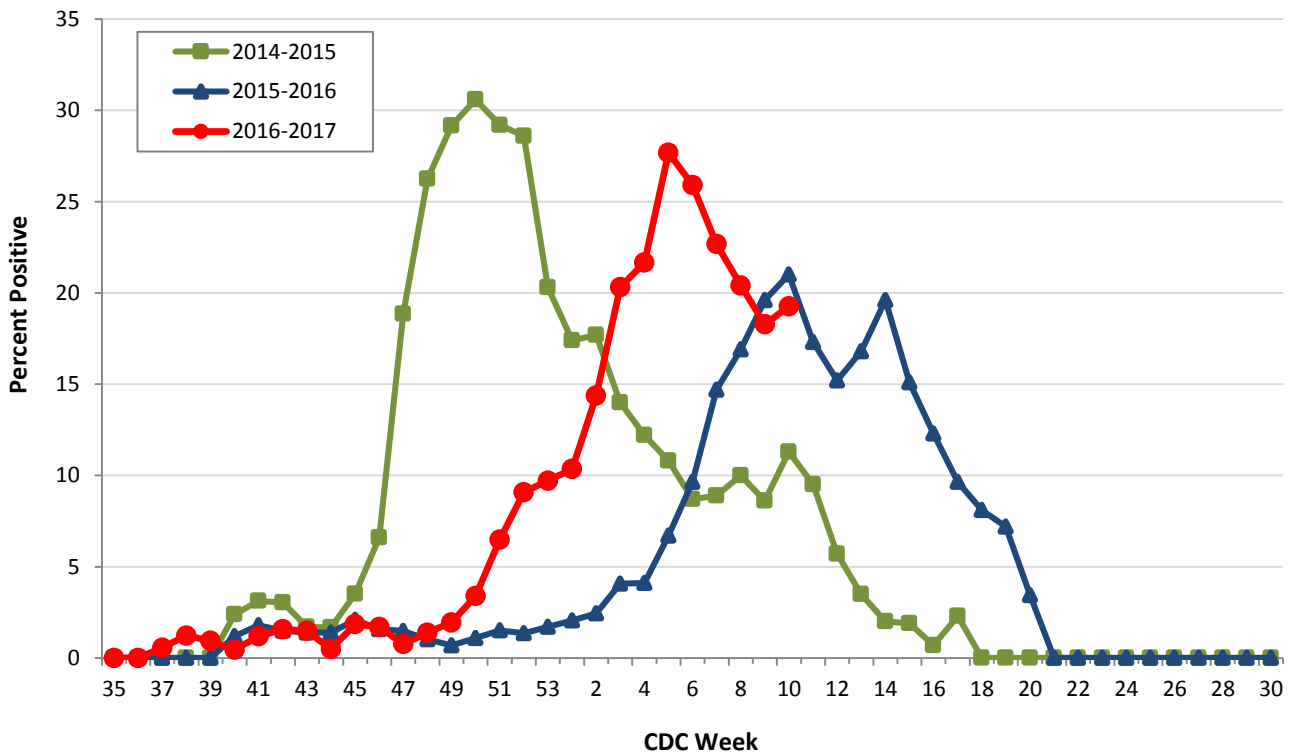


Figure 2. Influenza Positive Tests Reported to DCHHS by Hospital Laboratories: 2014–2017 Seasons



Note: For Figure 2 and all subsequent trend overlays there is no week 53 for the 2015-2016 or 2016-17 influenza seasons, therefore week 53 data point for those seasons is an average of week 52 and week 1.

Figure 3. Hospitalized Influenza Patients by Week of Admission, Dallas County: 2015-2017 Seasons

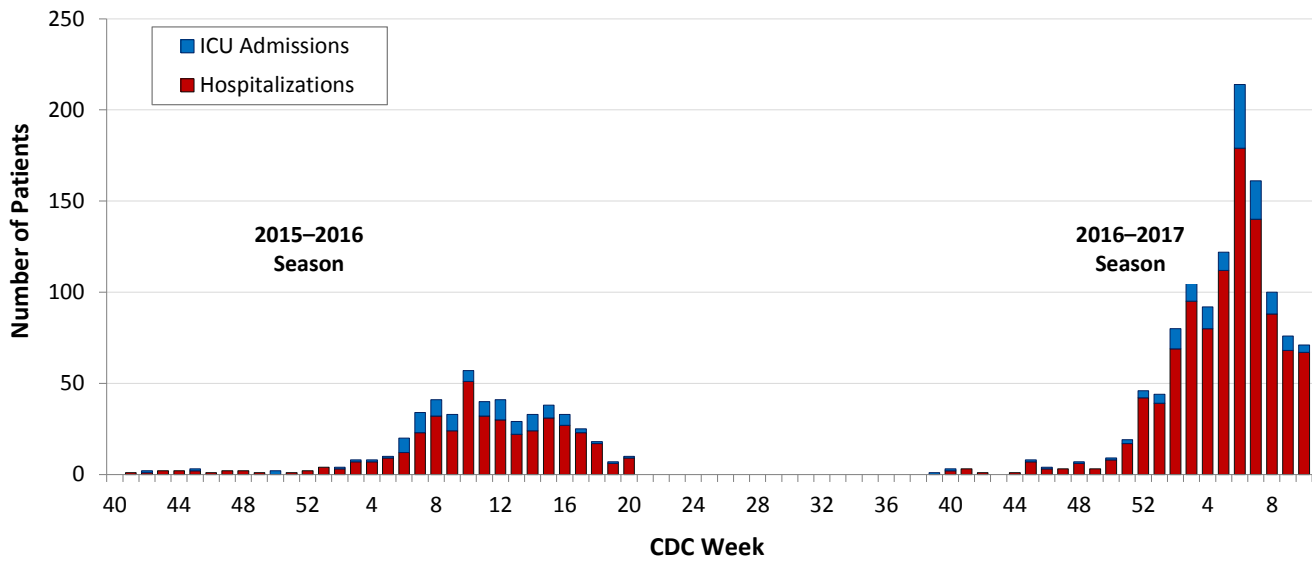
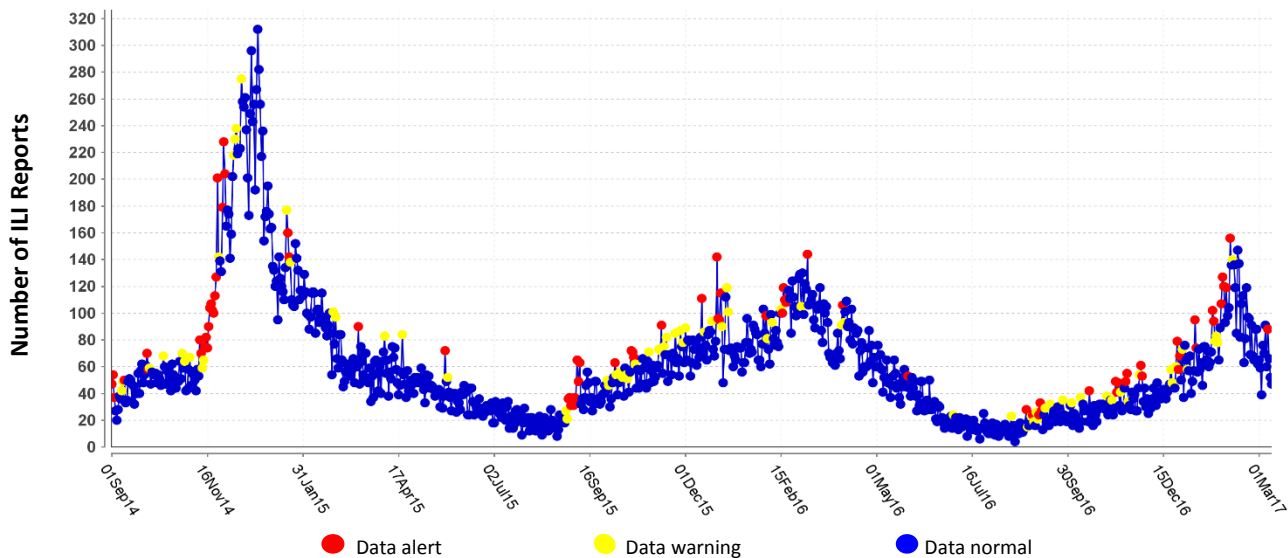


Figure 4. Syndromic Surveillance of Emergency Department Visits for Influenza-like Illness (ILI), Dallas County: September 1, 2014 – March 11, 2017



Data source: 18 emergency departments in Dallas County hospitals participating in the Electronic Surveillance System for the Early Notification of Community-based Epidemics (ESSENCE) voluntarily reporting the numbers of persons presenting with self-reported chief complaints of ILI.

Table 4. Influenza Typing and Subtyping from Cumulative Dallas County, Texas, and U.S. Laboratory Surveillance Data: 2016-2017 Season

	Dallas ¹ (n=686)	Texas ² (n=1,566)	U.S. ³ (n=29,514)
Influenza A	617 (89.9%)	1,336 (85.3%)	26,077 (88.4%)
H1N1 2009 subtype	75 (12.5%)	190 (14.2%)	656 (2.5%)
H3N2 subtype	527 (87.5%)	1,139 (85.8%)	25,117 (97.5%)
Not subtyped	5	7	304
Influenza B	69 (10.1%)	230 (14.7%)	3,437 (11.6%)

¹ DCHHS LRN laboratory PCR testing of designated Dallas County surveillance site isolates

² DSHS 2015–2016 Texas Influenza Surveillance Information Activity Report available at <https://www.dshs.state.tx.us/idcu/disease/influenza/surveillance/2017/>

³ CDC FluView Weekly Influenza Surveillance Report available at <http://www.cdc.gov/flu/weekly/>

Figure 5. Percentage of Student Absences by Week, Dallas County: 2015–2016 and 2016–2017

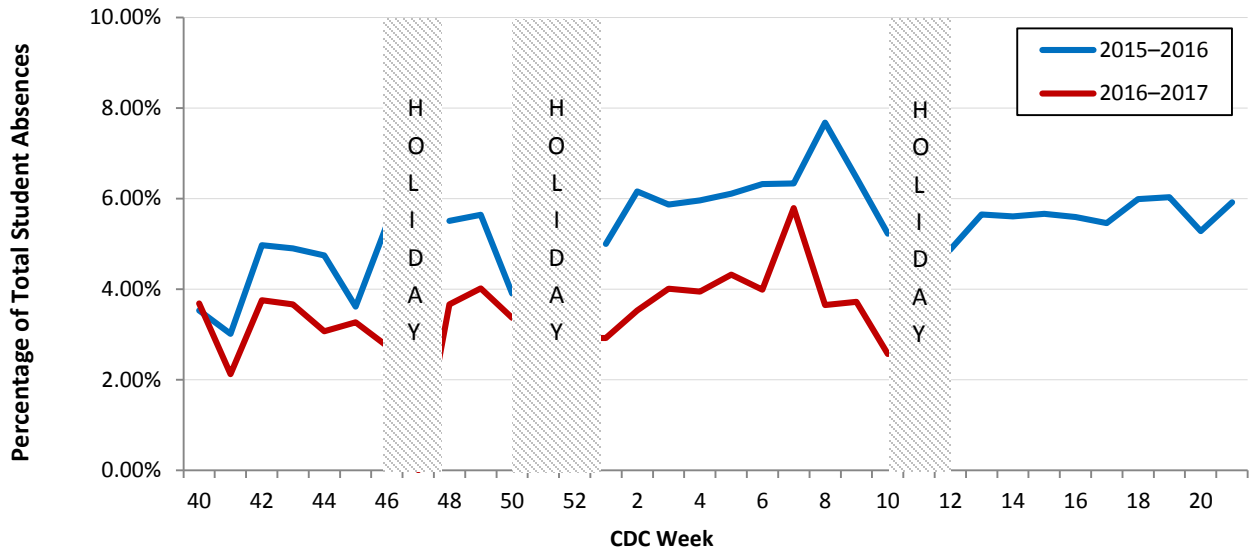
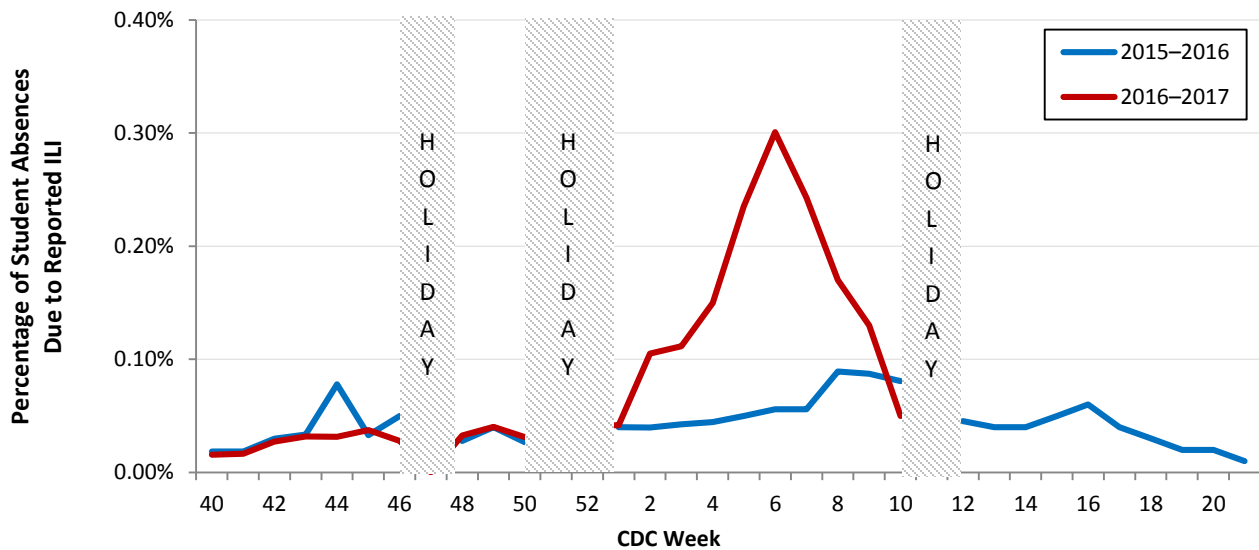


Figure 6. Percentage of Student Absences Due to ILI by Week, Dallas County: 2015–2016 and 2016–2017



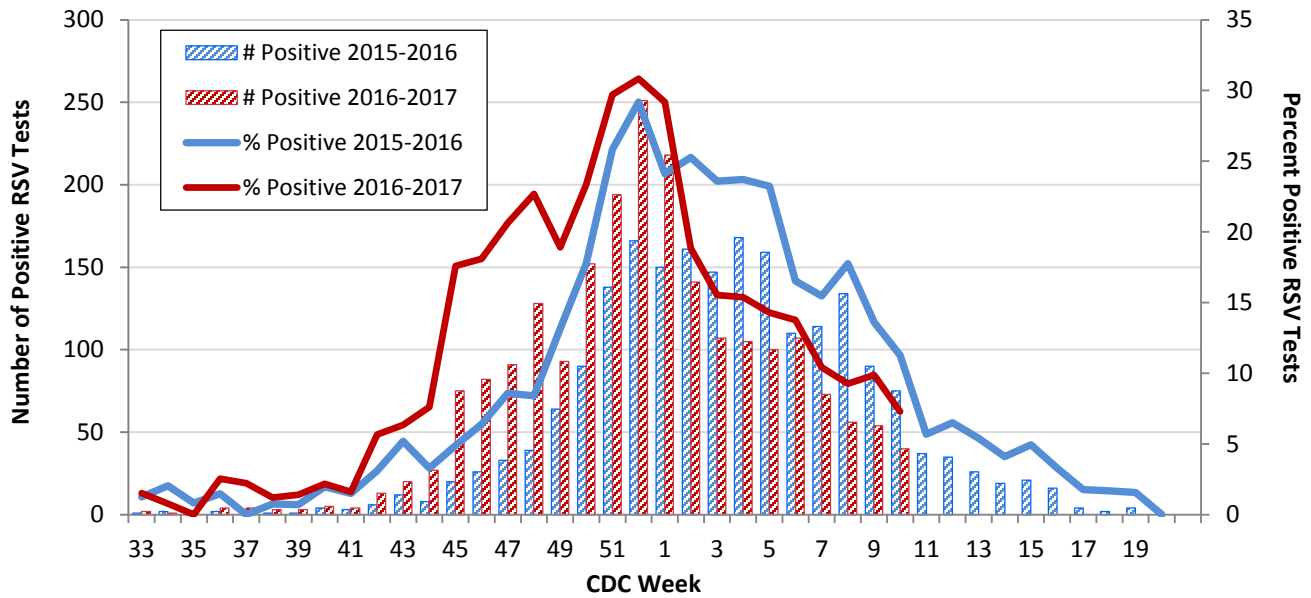
Data source: Voluntary reporting from Independent School Districts representing over 510 elementary, middle, and secondary schools and over 420,000 students in Dallas County

Table 5. Non-Influenza Respiratory Virus Testing by North Texas Laboratories Reported to NREVSS, Week 10

Virus	Number of Laboratories Reporting	Tests Performed	Total Positive Tests	Percentage of Tests Positive
Adenovirus (respiratory)	4	402	13	3.2%
HMPV	4	375	12	3.2%
Parainfluenza virus	4	402	21	5.2%
Rhinovirus/enterovirus	4	375	54	14.4%
RSV	4	549	40	7.3%

Data source: National Respiratory and Enteric Virus Surveillance System (NREVSS) and hospitals reporting directly to DCHHS

Figure 7. Number and Percent Positive RSV Rapid Antigen and PCR Tests by Week, NREVSS Surveillance Data, North Texas: August 22, 2015 – March 11, 2017



Data source: National Respiratory and Enteric Virus Surveillance System (NREVSS) and hospitals reporting directly to DCHHS

Table 6. Number and Percent Positive RSV Rapid Antigen and PCR Tests by Week, NREVSS Surveillance Data, North Texas: August 20, 2016 – March 11, 2017

Week Ending	1/28	2/4	2/11	2/18	2/25	3/4	3/11	8/20/16–Present
CDC Week	4	5	6	7	8	9*	10*	
RSV tests performed weekly	683	700	777	701	604	547	549	12,138
Total positive RSV tests	105	100	107	73	56	54	40	2,127
Percent positive RSV tests	15.4	14.3	13.8	10.4	9.3	9.9	7.3	

*Indicates preliminary results which are subject to change as adjustments are made for late-arriving data

Data source: National Respiratory and Enteric Virus Surveillance System (NREVSS)

Please report any of the following patients to DCHHS within 1 working day:

- **Hospitalized patients with influenza** (any subtype). Confirmation can be by any laboratory test, rapid antigen, culture, PCR, DFA/IFA, or performed in an outpatient or inpatient laboratory.
- **Deaths of persons with confirmed influenza** (any subtype). We are requesting all pediatric influenza-associated deaths to be reported *immediately* to facilitate specimen procurement and testing.
- Suspected influenza infections involving institutional outbreaks or a resident of any **Long Term Care facility** (please report *immediately*).

Phone: (214) 819-2004

Email: influenza@dallascounty.org